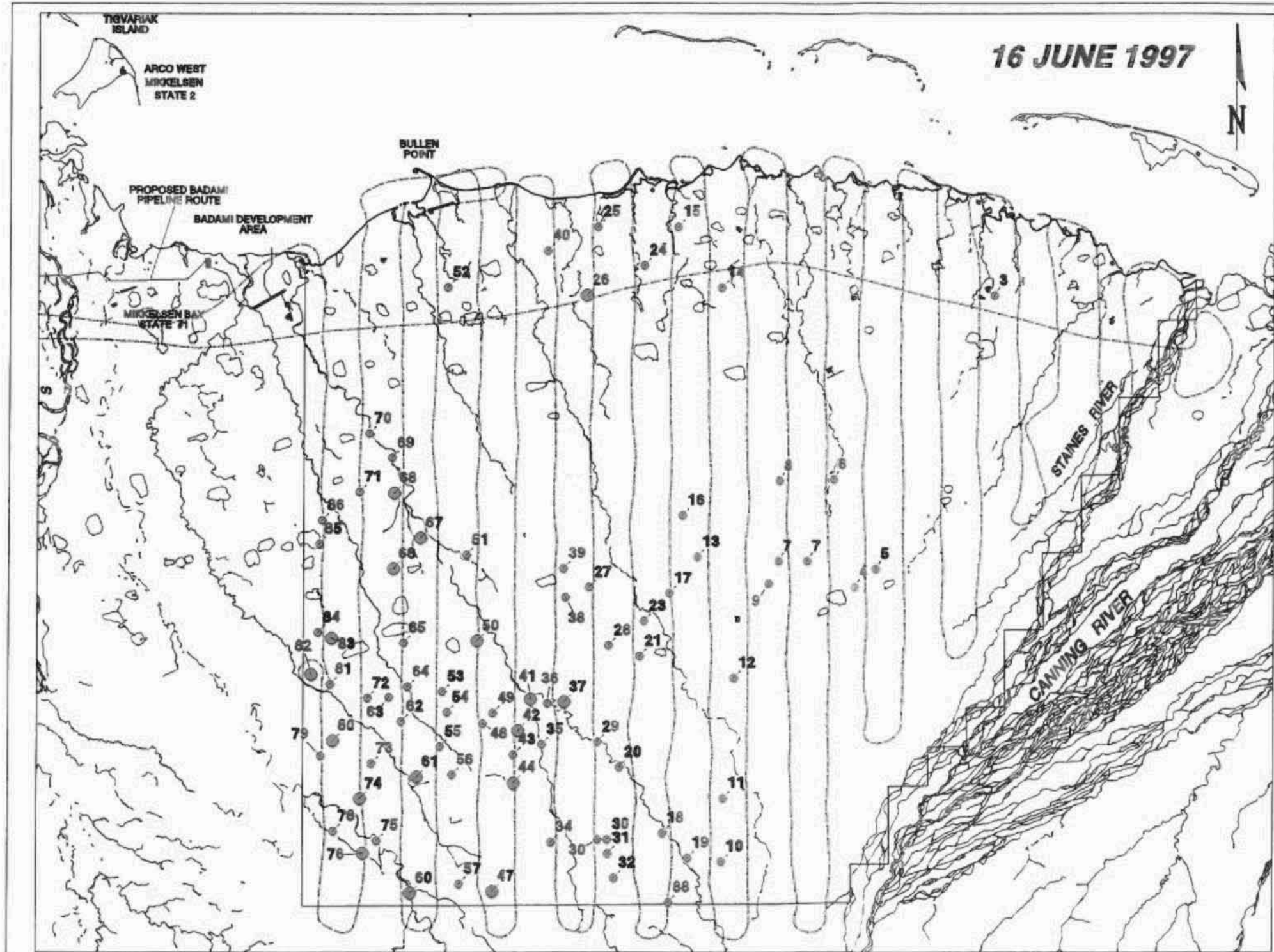

APPENDIX A.

1997 DATA



16 JUNE 1997

Figure A-1

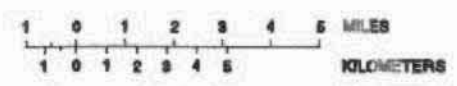
Distribution of caribou during the calving period, 16 June 1997, in the Sourdough study area, Alaska.

Caribou Group Size

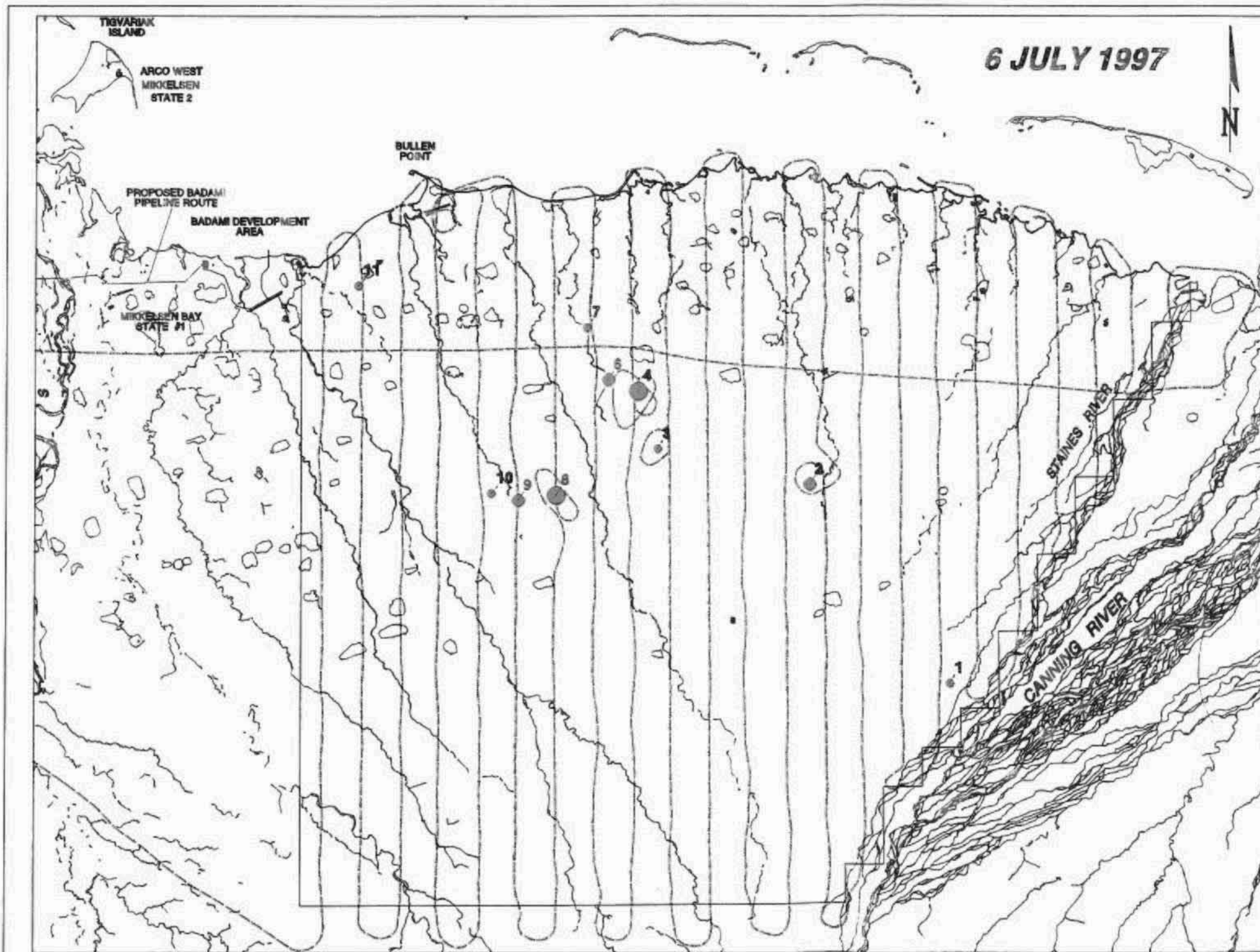
Group Size	Groups
<10	64
10 to 100	17
101 to 1000	0
>1000	0

15 Caribou Group Attribute Number (see Table A-1)

- Rivers, Coastline, and Lakes (>20 acres)
- Roads, Pipelines, and Study Area Boundary
- Flightpath
- Oil Production and Service Facilities



Map Projection: UTM Zone 6
 Datum: NAD 27
 View Scale: 1:200,000
 Mapping Scale: 1:63,360
 Date: 17 December 1997
 Prepared by: LGL Alaska Research Associates
 File: Sourdough Mammals Fig A-1.WOR



6 JULY 1997

Figure A-2

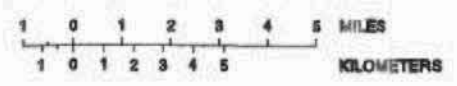
Distribution of caribou during the post-calving period, 6 July 1997, in the Sourdough study area, Alaska.

Caribou Group Size Groups

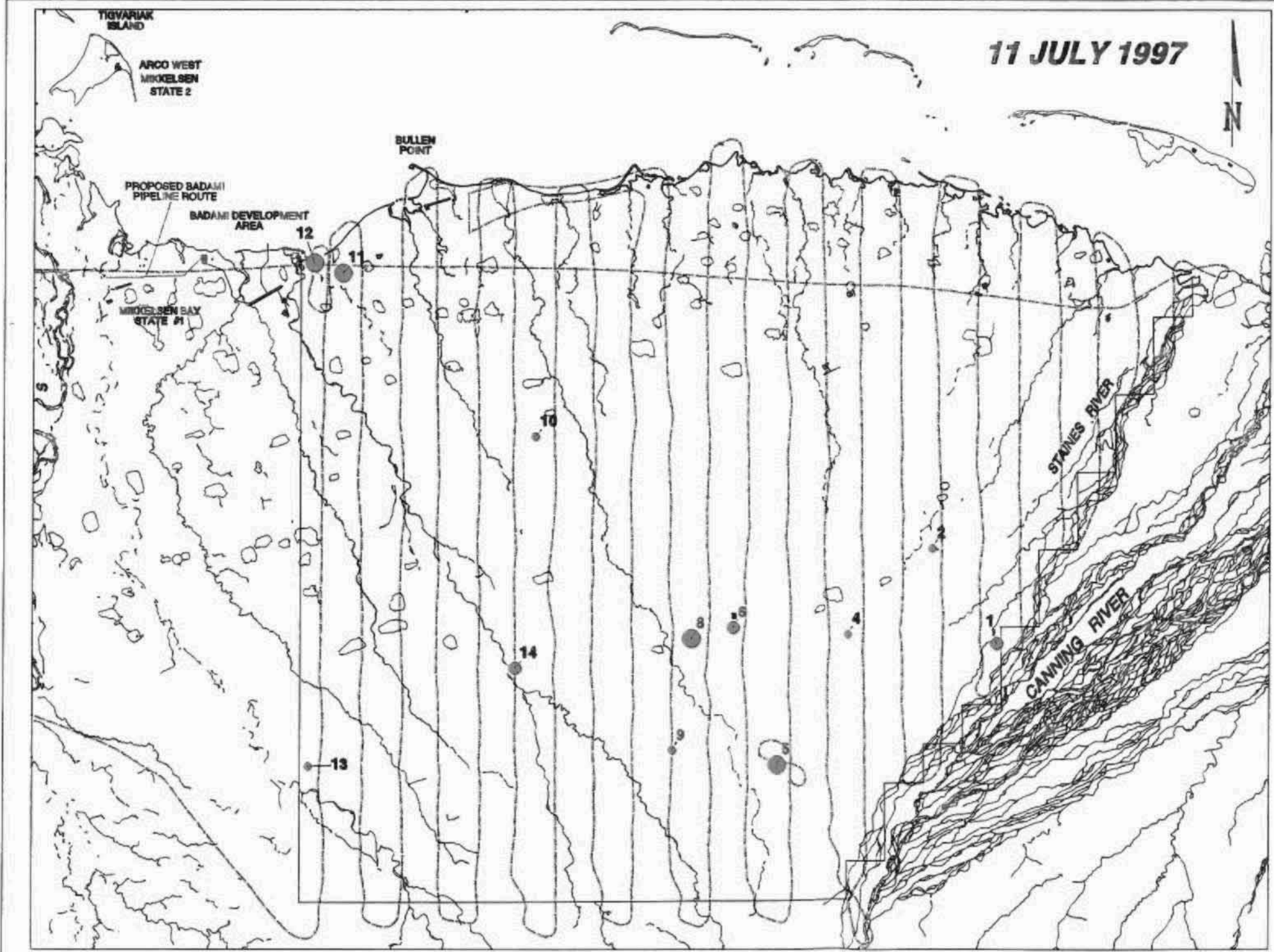
•	<10	5
●	10 to 100	3
●	101 to 1000	2
●	>1000	0

15 Caribou Group Attribute Number (see Table A-1)

— Rivers, Coastline, and Lakes (>20 acres)
 — Roads, Pipelines, and Study Area Boundary
 - - - Flightpath
 ■ Oil Production and Service Facilities



Map Projection: UTM Zone 6
 Datum: NAD 27
 View Scale: 1:200,000
 Mapping Scale: 1:63,360
 Date: 17 December 1997
 Prepared by: LGL Alaska Research Associates
 File: Sourdough Mammals Fig A-2.WOR



11 JULY 1997



Figure A-3

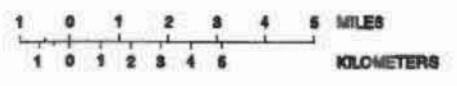
Distribution of caribou during the post-calving period, 11 July 1997, in the Sourdough study area, Alaska.

Caribou Group Size Groups

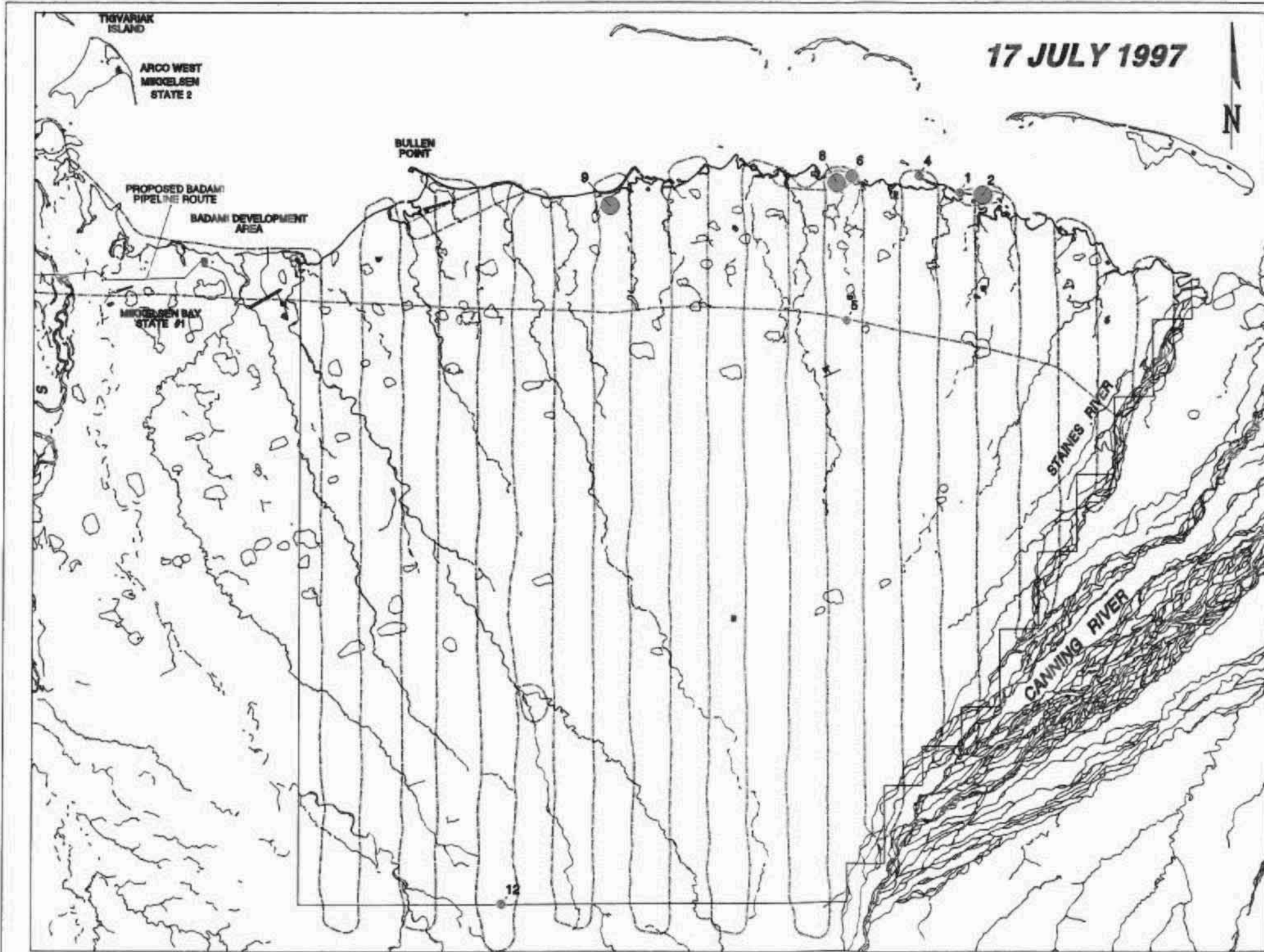
- <10 5
- 10 to 100 3
- 101 to 1000 4
- >1000 0

15 Caribou Group Attribute Number (see Table A-1)

- Rivers, Coastline, and Lakes (>20 acres)
- Roads, Pipelines, and Study Area Boundary
- - - Flightpath
- Oil Production and Service Facilities



Map Projection: UTM Zone 6
 Datum: NAD 27
 View Scale: 1:200,000
 Mapping Scale: 1:63,360
 Date: 17 December 1997
 Prepared by: LGL Alaska Research Associates
 File: Sourdough Mammals Fig A-3.WOR



17 JULY 1997



Figure A-4

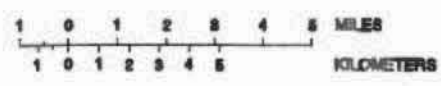
Distribution of caribou during the post-calving period, 17 July 1997, in the Sourdough study area, Alaska.

Caribou Group Size
Groups

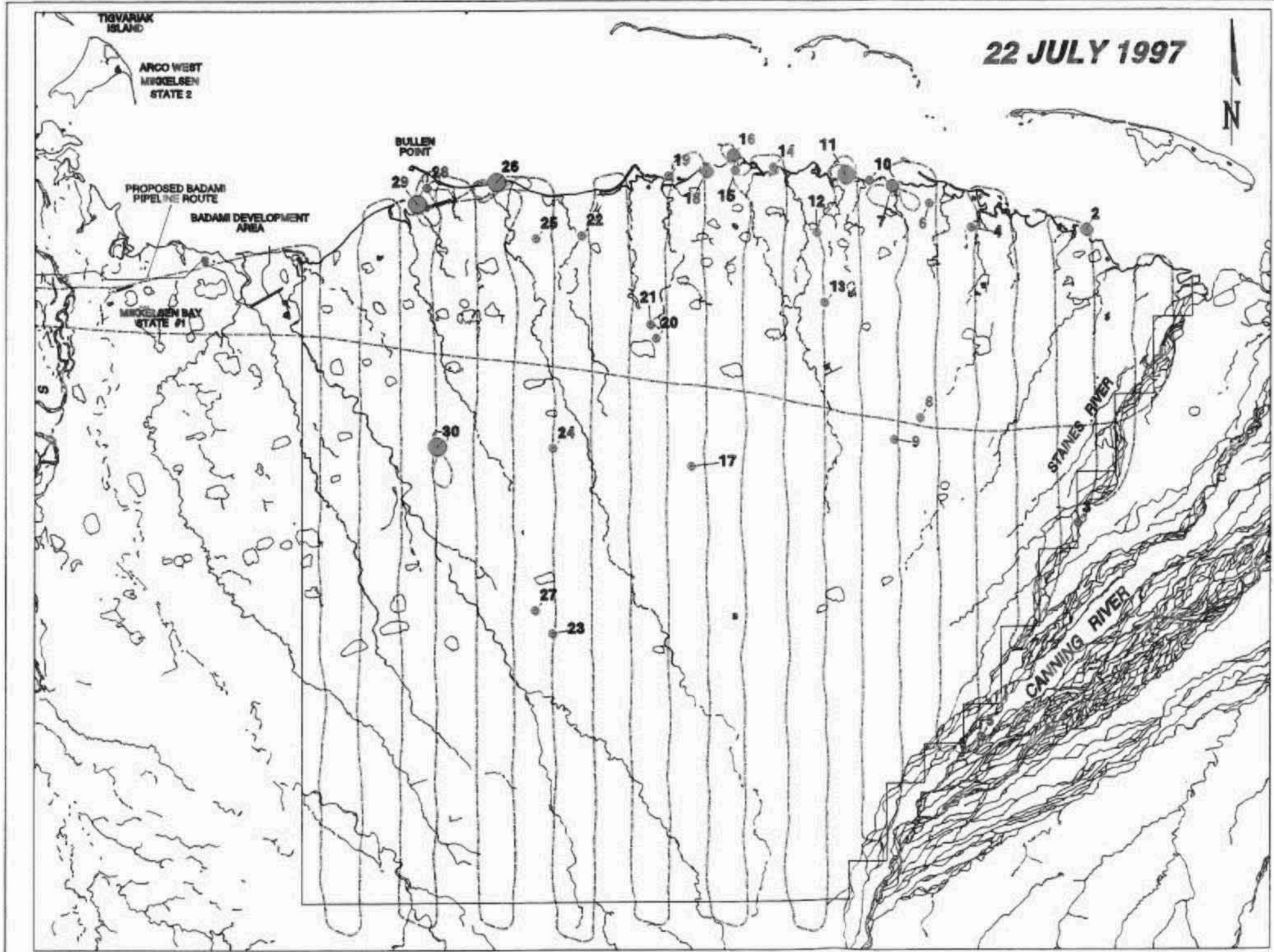
- <10 4
- 10 to 100 1
- 101 to 1000 3
- >1000 0

15 Caribou Group
Attribute Number
(see Table A-1)

- Rivers, Coastline, and Lakes (>20 acres)
- Roads, and Study Area Boundary
- Flightpath
- Oil Production and Service Facilities



Map Projection: UTM Zone 6
 Datum: NAD 27
 View Scale: 1:200,000
 Mapping Scale: 1:63,360
 Date: 17 December 1997
 Prepared by: LGL Alaska Research Associates
 File: Sourdough Mammals Fig A-4.WOR



22 JULY 1997

Figure A-5

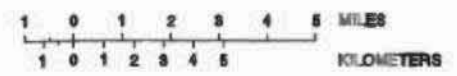
Distribution of caribou during the post-calving period, 22 July 1997, in the Sourdough study area, Alaska.

Caribou Group Size Groups

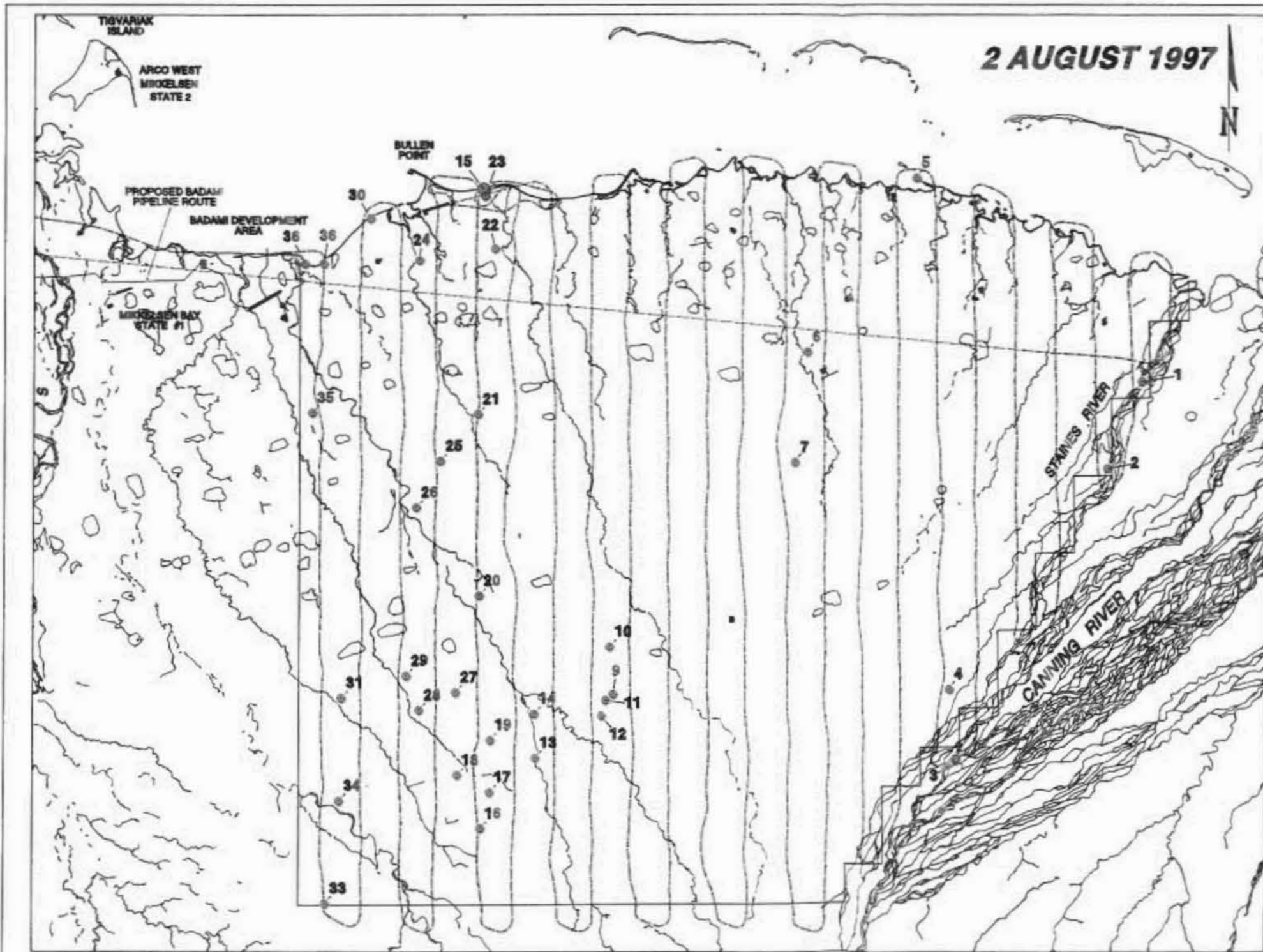
•	<10	21
●	10 to 100	4
●	101 to 1000	4
●	>1000	0

15 Caribou Group Attribute Number (see Table A-1)

- Rivers, Coastline, and Lakes (>20 acres)
- Roads, and Study Area Boundary
- - - Flightpath
- Oil Production and Service Facilities



Map Projection: UTM Zone 6
 Datum: NAD 27
 View Scale: 1:200,000
 Mapping Scale: 1:63,360
 Date: 18 December 1997
 Prepared by: LGL Alaska Research Associates
 File: Sourdough Mammals Fig A-5.WOR



2 AUGUST 1997

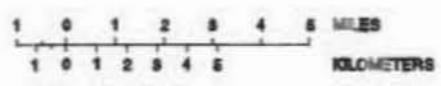
Figure A-6
 Distribution of caribou during the post-calving period, 2 August 1997, in the Sourdough study area, Alaska.

Caribou Group Size

Group Size	Number of Groups
<10	34
10 to 100	1
101 to 1000	0
>1000	0

15 Caribou Group Attribute Number (see Table A-1)

— Rivers, Coastline, and Lakes (>20 acres)
 — Roads, and Study Area Boundary
 - - - Flightpath
 ■ Oil Production and Service Facilities



Map Projection: UTM Zone 6
 Datum: NAD 27
 View Scale: 1:200,000
 Mapping Scale: 1:63,360
 Date: 18 December 1997
 Prepared by: LGL Alaska Research Associates
 File: Sourdough Mammals Fig A-6.WOR

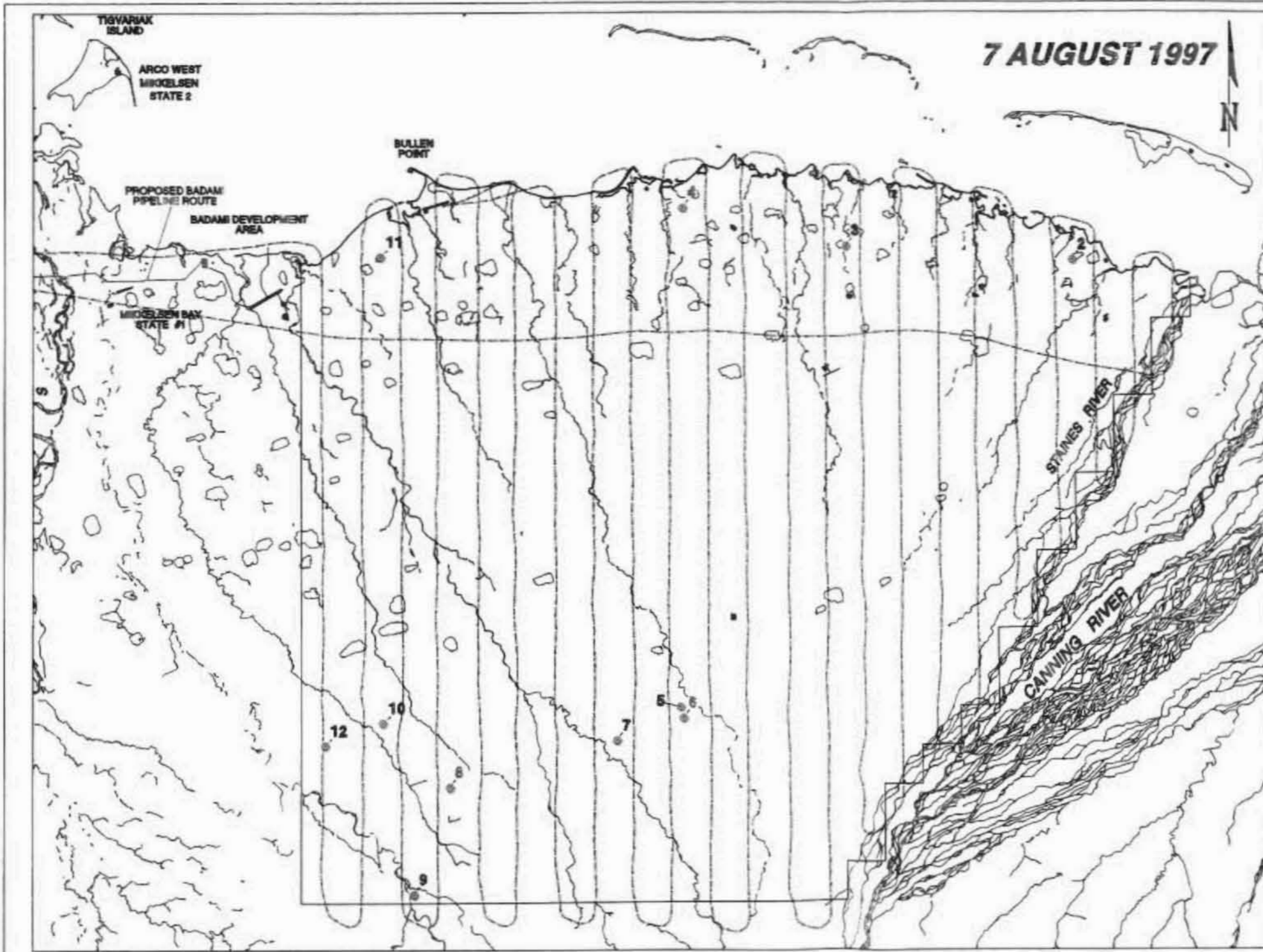


Figure A-7

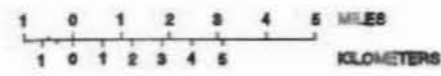
Distribution of caribou during the post-calving period, 7 August 1997, in the Sourdough study area, Alaska.

Caribou Group Size Groups

•	<10	11
●	10 to 100	0
●	101 to 1000	0
●	>1000	0

15 Caribou Group Attribute Number (see Table A-1)

— Rivers, Coastline, and Lakes (>20 acres)
 — Roads, and Study Area Boundary
 - - - Flightpath
 ■ Oil Production and Service Facilities



Map Projection: UTM Zone 6
 Datum: NAD 27
 View Scale: 1:200,000
 Mapping Scale: 1:63,360
 Date: 18 December 1997
 Prepared by: LGL Alaska Research Associates
 File: Sourdough Mammals Fig A-7.WOR

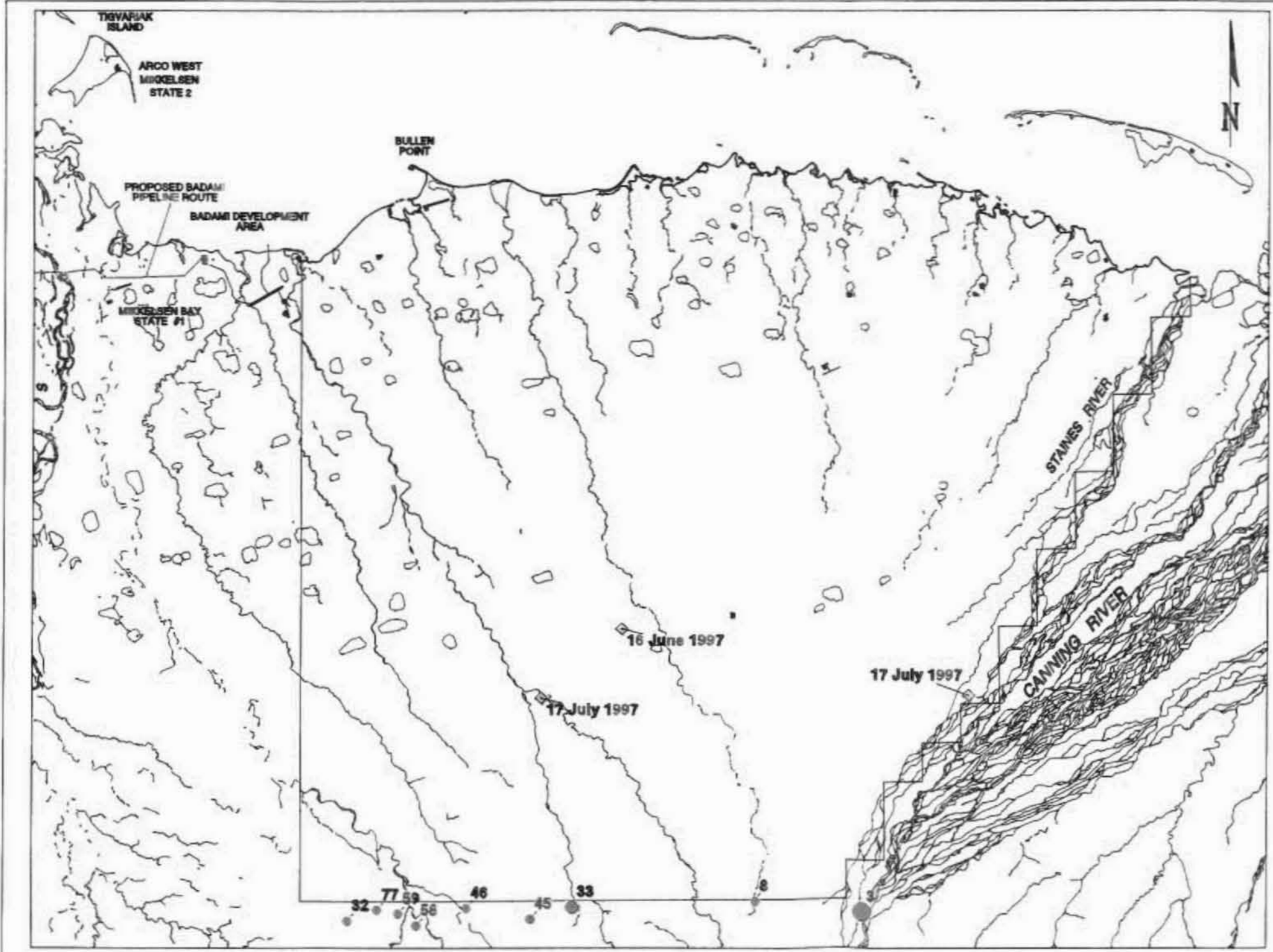


Figure A-8

Brown bear and caribou sightings, 16 June to 7 August 1997, in or near the Sourdough study area, Alaska.

- Caribou Group Size**
- | | |
|---|-----------------|
| | Groups |
| • | <10 7 |
| ● | 10 to 100 1 |
| ● | 101 to 1000 1 |
| ● | >1000 0 |
- 15 Caribou Group Attribute Number (see Table A-3)
- ◇ Brown Bear Sighting (see Table A-2)

- Rivers, Coastline, and Lakes (>20 acres)
- Roads, and Study Area Boundary
- Flightpath
- Oil Production and Service Facilities

1 0 1 2 3 4 5 MILES
1 0 1 2 3 4 5 KILOMETERS

Map Projection: UTM Zone 6
 Datum: NAD 27
 View Scale: 1:200,000
 Mapping Scale: 1:63,360
 Date: 18 December 1997
 Prepared by: LGL Alaska Research Associates
 File: Sourdough Mammals Fig A-8.WOR