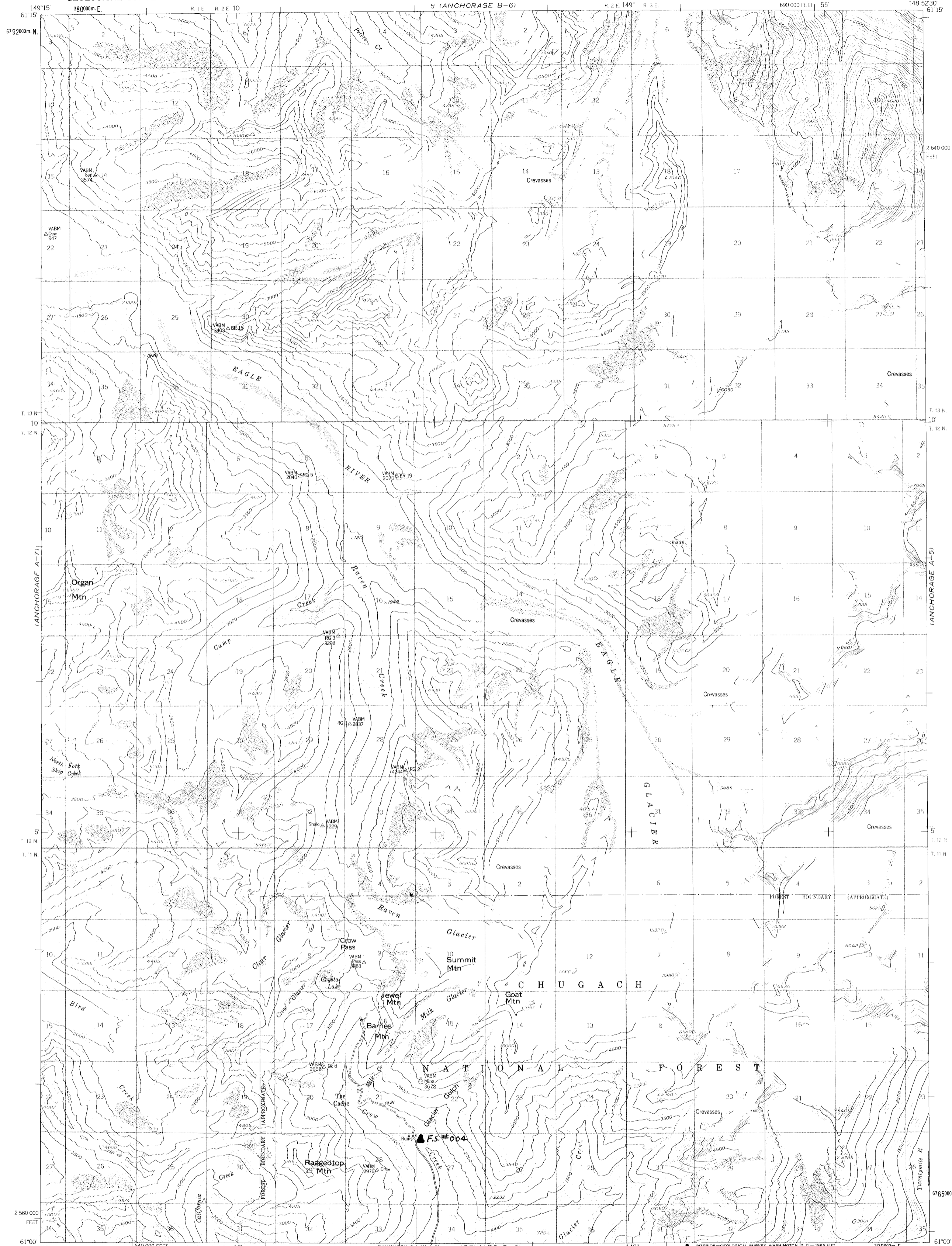
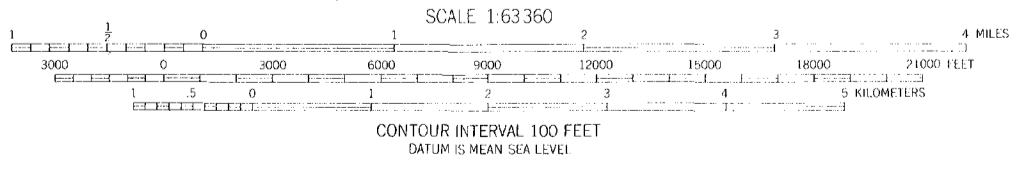
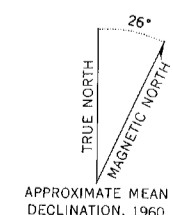


(ANCHORAGE B-7)

(ANCHORAGE B-5)



Maped, edited, and published by the Geological Survey
Control by USGS, USC&GS, and USCE
Topography by photogrammetric methods from aerial photographs
taken 1957, field annotated 1960. Map not field checked
Universal Transverse Mercator projection, 1927 North American datum
10,000 foot grid based on Alaska coordinate system, zone 4
1000-meter Universal Transverse Mercator grid ticks,
zone 6, shown in blue
Land lines represent unsurveyed and unmarked locations
predetermined by the Bureau of Land Management
Folio S 14, Seward Meridian



ROAD CLASSIFICATION
Light-duty ——— Unimproved dirt - - - - -



ANCHORAGE (A-6), ALASKA
N6100-W14852.5/15X22.5

FOR SALE BY U.S. GEOLOGICAL SURVEY
FAIRBANKS, ALASKA, DENVER 25, COLORADO OR WASHINGTON 25, D.C.
A FOLDER DESCRIBING TOPOGRAPHIC MAPS AND SYMBOLS IS AVAILABLE ON REQUEST

1960
MINOR REVISIONS 1964

(SEWARD D-7)

(SEWARD D-5)