

DEPARTMENT OF THE INTERIOR
ALASKAN ENGINEERING COMMISSION

— MAP —

— OF —

DEFINITE LOCATION "A" LINE

— FROM —

GLACIER CREEK TO FALLS CREEK

STATION "H" 1238+00 TO "A" 220+00

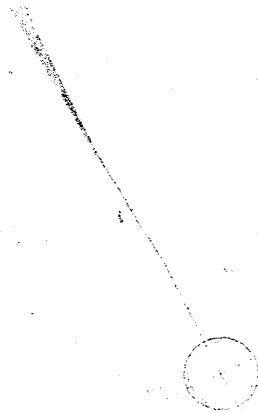
SCALE: 1 INCH = 500 FEET

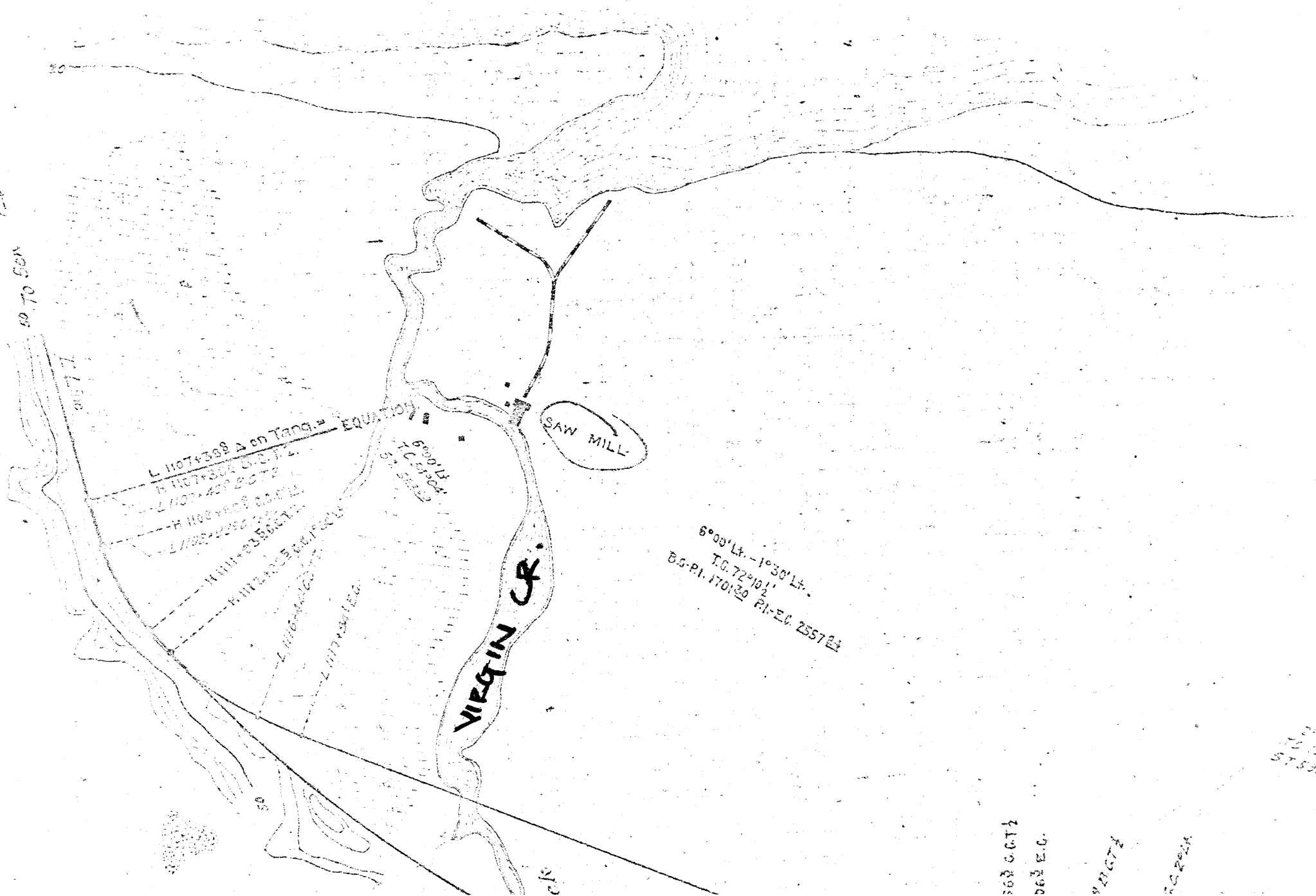
TURNAGAIN ARM DISTRICT

DEC. 1916.

Examined
C. E. Engle

Tr. Engle
C. E. Engle





1-4
50 TO 50N

L 11074368 Δ on Tang. = EQUATION
 H 11074304 C.S.T.L.
 L 11074292 S.C.T.L.
 H 11081908 S.C.T.L.
 L 11081228 S.C.T.L.

11111235 S.C.T.L.
 11111235 S.C.T.L.
 11111235 S.C.T.L.

6000' Lt.
 S.C.T.L.
 11111235

SAW MILL

VIRGIN CR.

6°00' Lt. - 1°30' Lt.
 T.C. 72°10'
 B.G. PI. 170120 PI-EG. 255723

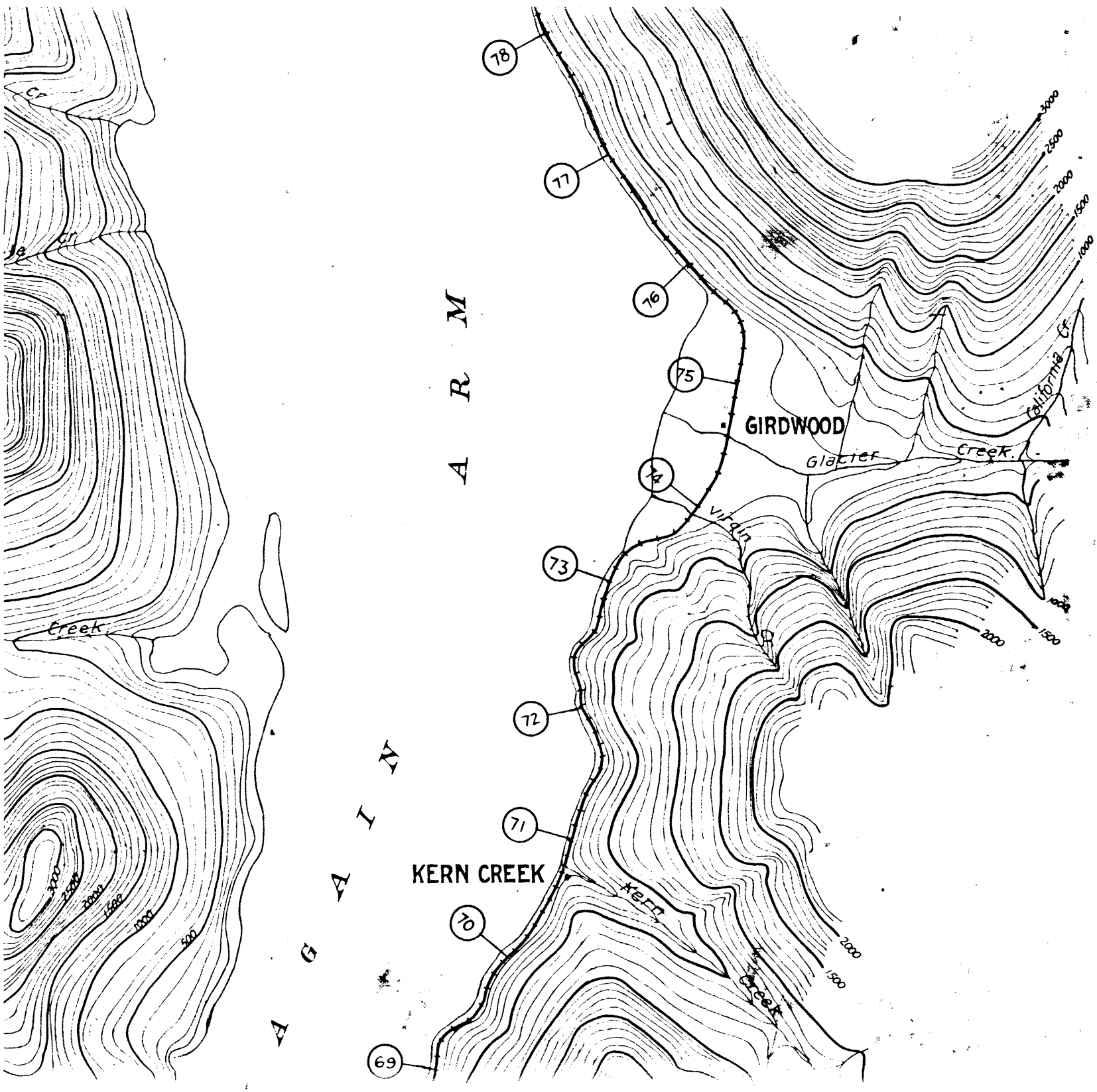
563 C.C.T.L.

563 E.C.

VIRGIN

563 E.C.

5700
 72 1301
 57.50162



A.E.C. map Seward & Turney in Arm Mile 0-Mile 65
 Dec. 1914, Engineer Beck