

ADF&G MULTI-ASSESSMENT FORM
1991 GENERAL ENTRY CHECKLIST

2001
10/3/91
★

STREAM#: 2484010105
SEGMENT: CP001

PAGE 73

DATE PRINTED: 08/19/91

LOCATION: KAMISHAK BAY, SOUTH SHORE, SPOTTED GLACIER, N OF

SURVEY TYPE: 89 AFHS - SS / BS

METHOD: FOOT

DATE: 08/13/89

TEAM RECORDER: HILL

START TIME: 1645
END TIME: 1710

OBSERVERS: GLENN

TIDES: *Ebb*
OG/HAB DISCREPANCIES:

AGENCY: FG

PHOTOS TAKEN: Y

STATION: 2484010105

ROLL#: 89DDH021H
FRAME: 06-09

VIDEO TAKEN: Y TAPE#: 89LPG014H
START: 1748 END: 1767

SAMPLES TAKEN: Y

SAMPLE NUMBERS: 89DDH050H

OIL IN STREAM BED: N

OVERALL OIL IMPACT: L

OIL ON BEACH BY MOUTH: Y

WAVE EXPOSURE: HIGH

SHORELINE TYPE: BEACH

SUBSTRATE TYPE:	BEDROCK	BOULDER	COBBLE	VEGETAT
	GRAVEL 30	SAND 20	MUD/SILT 20	GRANULE 30

ANADROMOUS FISH PRESENT: Y

SPECIES: PINK SALMON	COUNT:	600
CHUM <i>Salmon</i>		200

ACE 10494175 H/F/S/P

ADF&G MULTI-ASSESSMENT FORM
1991 OILING ENTRY CHECKLIST

PAGE 87

DATE PRINTED: 08/19/91

STREAM# : 2484010105
SEGMENT#: CP001

SURVEY TYPE : 89 AFHS - SS/BS LOCATION: KAMISHAK BAY, SOUTH SHORE,
DATE: 08/13/89 SPOTTED GLACIER, N OF
TIMES: 1645 - 1710 TEAM RECORDER: HILL

-- OILING EXTENT --

SITE#	SITE TYPE	DEPTH (cm)	LENGTH (m)	WIDTH (m)	AREA (m)	%	THICK (cm)	PEN (cm)	OIL TYPE CODES
1			183	3	549	3	1.2	1.2	MS TB HOR

COMMENTS:

SITE 10-6. GROUPS OF 6MM X 6MM TO 20.3CM X 20.3 CM OILED SILT BALLS - 1 GROUP ~ EVERY 2.45M. THERE IS A LOT OF SILT ON THIS BEACH AND OIL IS FOUND BENEATH THE SILT LAYER THAT IS BLOWN ACROSS THE BEACH (MUCH OF THE OIL FOUND WAS COATED WITH A CRUST OF SILT). SALMON OBSERVED IN CLEAR WATER TRIBUTARY ~ 1/2 TO 1 MILE EAST OF THE RIVER MOUTH. THE LARGEST CHANNEL IS EXTREMELY SILTY.

ACE 10494176-15

1989-AFHS

Site 10-6

Directly North of Spotted Glacier

ASC NUMBER: 248-40-10105 SEGMENT NUMBER: CP-1
 LOCATION: Kamishak Bay, Directly North Spotted Glacier
 TEAM NAME:
 AFOGNAK K-UNIT:
 US QUADRANGLE: Afognak D-5
 SHORELINE TYPE: Beach
 WAVE EXPOSURE: High

YR CATALOGED:

LATITUDE:
 LONGITUDE:
 LEGAL:

ALL SEGMENTS:

ASC NUMBER:
 SURVEY TYPE: SS
 METHOD: Foot
 DATE: 8/13/89
 START TIME: 1645
 STOP TIME: 1710

TEAM RECORDER: Doug Hill
 OBSERVERS: Lee Glenn

AGENCY(IES): ADF46

PHOTOS TAKEN? 4
 Roll #: 89DDH21H Frames: 6-9
 VIDEO TAKEN? 4 Tape Number: 89-LP4-014-H-V
 Counter Start: 1748 → 1767

SAMPLES TAKEN? 4
 SAMPLE I.D. NUMBERS: 1. DDH/LP4-8/13/89-16502.
 4. 39DDH050H 5.

	LENGTH m	WIDTH m	M2	%	THICK cm	PEN cm	OIL TYPE
SITE 1	183	3	549	3	1.2	1.2	MS, TB, HOR
SITE 2							
SITE 3							
SITE 4							
SITE 5							

OVERALL OIL IMPACT: L

OIL IN STREAM CHANNEL? N

OIL ON BEACH WITHIN 50M OF STREAM MOUTH? Yes

SUBSTRATE

Bedrock	Granule 30
Boulder	Sand 20
Cobble	Silt 20
Pebble 30	Veget.

SPECIES	ADD	2000	Pinkie	Chum	
COUNT			600	200	

COMMENTS: Groups of 6mm x 6mm to 20.3cm x 20.3cm oiled silt balls - 1 group \approx every 2.45m. There is a lot of silt on this beach and oil is uncovered found beneath the silt layer that is blown across the beach (much of the oil found ~~uncovered~~ was coated with a crust of silt).
 Salmon observed in clearwater tributary approx. 1/2 to 1 mile east of the river mouth. The largest channel is extremely silty.

ACE 104941774/5

FISH HABITAT ASSESSMENT FORM

Kamishak Bay - Spotted Glacier DDH

1 REGION: 2 PWS KP, CI 4 K, AP 5 OBSERVER(S) Dr. Hill, Lee Glenn

6 SITE NO. 10-E 7 AERIAL PHOTO NO. 9 8 CAT NO. M

248-40-10105

9 STREAM NAME _____ 10 LAT 58° 99' 55" 11 LONG 153° 28' 20"

12 DATE 8/13/89 13 TIME 1650 14 TIDE: Low slack Flood High slack Ebb

15 CATALOGED ANADROMOUS STREAM? Y 16 ANAD. FISH FOUND? N

17 OIL FOUND IN STREAM? Y 18 OIL FOUND NEAR STREAM (1 MI.)? N

19 OIL SAMPLES TAKEN? N 20 ID NOS. DDH/LPG-8/13/89-1650

21 35 mm PICTURES TAKEN? N 22 ROLL NO(S) 89-DDH

23 EXPOSURE NO.	24 DESCRIPTION
<u>6</u>	<u>Sample # DDH/LPG-8/13/89-1650</u>
<u>7</u>	<u>Location ID, Mt Douglas in Background, Sample in photo</u>
<u>8</u>	<u>Location ID, Southeast looking view - Down length of beach</u>
<u>9</u>	<u>Aerial, Mt Douglas in photo, North of stream</u>

25 VIDEO FOOTAGE TAKEN? N 26 CASSETTE NO(S) 89-LPG-D14-H-Video

27 DESCRIPTION: General location footage (1748-1767)

ACE 10494178

ACE 7380349

ANADROMOUS FISH OBSERVATIONS

PINK CHUM RED KING COHO DOLLY

28	Aerial	600	200					
29	Ground	600	200					

30 COMMENTS: SALMON found approx 3/4 mile from mouth of stream - North extremely silty as this clearwater salmon stream merges with silted glacial stream (Bright fish)

Site 10-6

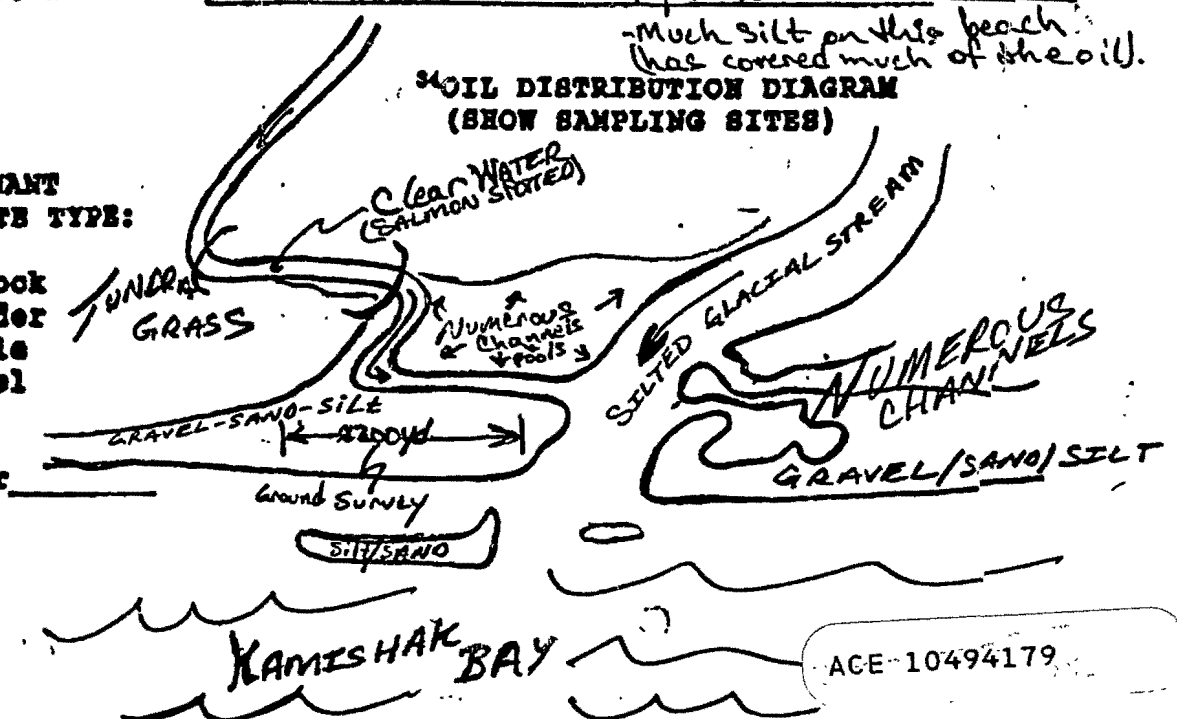
OIL OBSERVATIONS

EXTENT OF OIL:

	WITHIN STREAM	OUTSIDE STREAM
31 SURFACE COVERAGE		Groups of 4" x 24" to 8" x 8" oiled silt
32 SURFACE THICKNESS	None Observed	2 Groups approx. 8" probably more. Residues up to 1/2" thick
33 PENETRATION		up to 1/2"

35 PREDOMINANT SUBSTRATE TYPE:

1. Bedrock
2. Boulder
3. Cobble
4. Gravel
5. Sand
6. Mud
7. Other



ACE-10494179

ACE 7380350

36 COMMENTS: Much of the oil found was crusted over with a crust of silt/sand (or silt was cemented together by oil to some degree)

ANADROMOUS FISH OBSERVATIONS

	PINK	CHUM	RED	KING	CONO	DOLLY		
28 Aerial	600	200						
29 Ground	600	200						

30 COMMENTS: SALMON found approx 3/4 mile from mouth of stream - Mouth extremely silty as this clearwater salmon stream merges with silted glacial stream (Bright fish)

Site 10-6

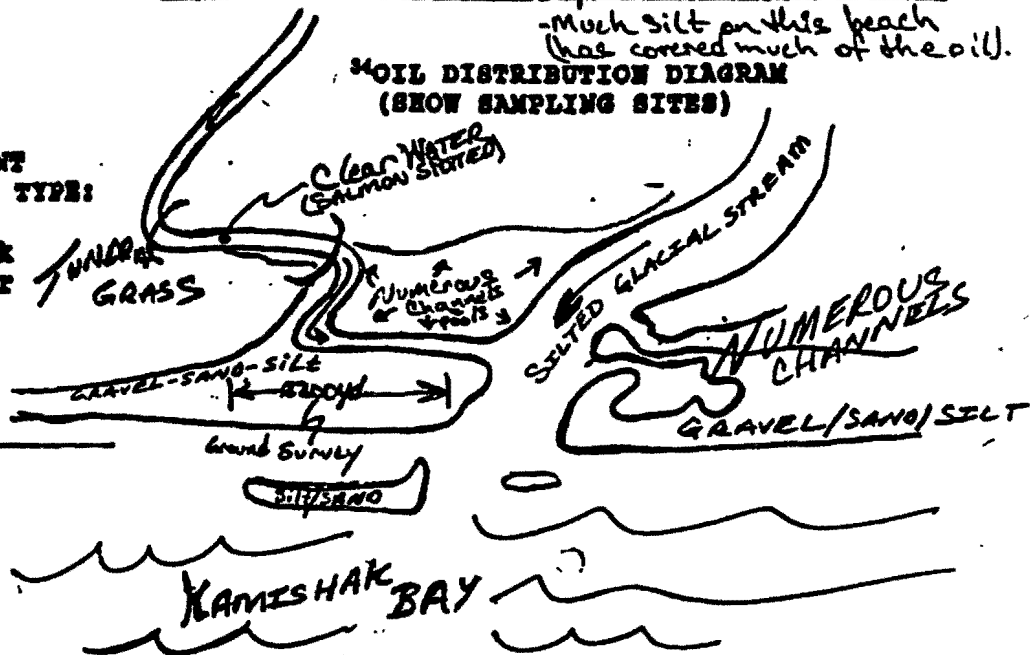
OIL OBSERVATIONS

EXTENT OF OIL:

	WITHIN STREAM	OUTSIDE STREAM
31 SURFACE COVERAGE	None observed	Groups of 4" x 1/4" to 8" x 8" oiled silt 1 Group Approximately every 8' probably more frequent
32 SURFACE THICKNESS	None observed	up to 1/2" thick
33 PENETRATION		up to 1/2"

34 PREDOMINANT SUBSTRATE TYPE:

1. Bedrock
2. Boulder
3. Cobble
4. Gravel
5. Sand
6. Mud
7. Other



ACE 7380350

35 COMMENTS: Much of the oil found was covered over with a crust of silt/sand (or silt was cemented together by oil to some degree)

Copies ripped
Original

AFONAK (D-5) QUADRA
ALASKA
1:63,360 SERIES (TOPOGRAPH)

1:630 000 FEET

UNITED STATES
DEPARTMENT OF THE INTERIOR
GEOLOGICAL SURVEY

1:63,360 E

30 (ILIAMNA A-1 AND H-2)

35

20

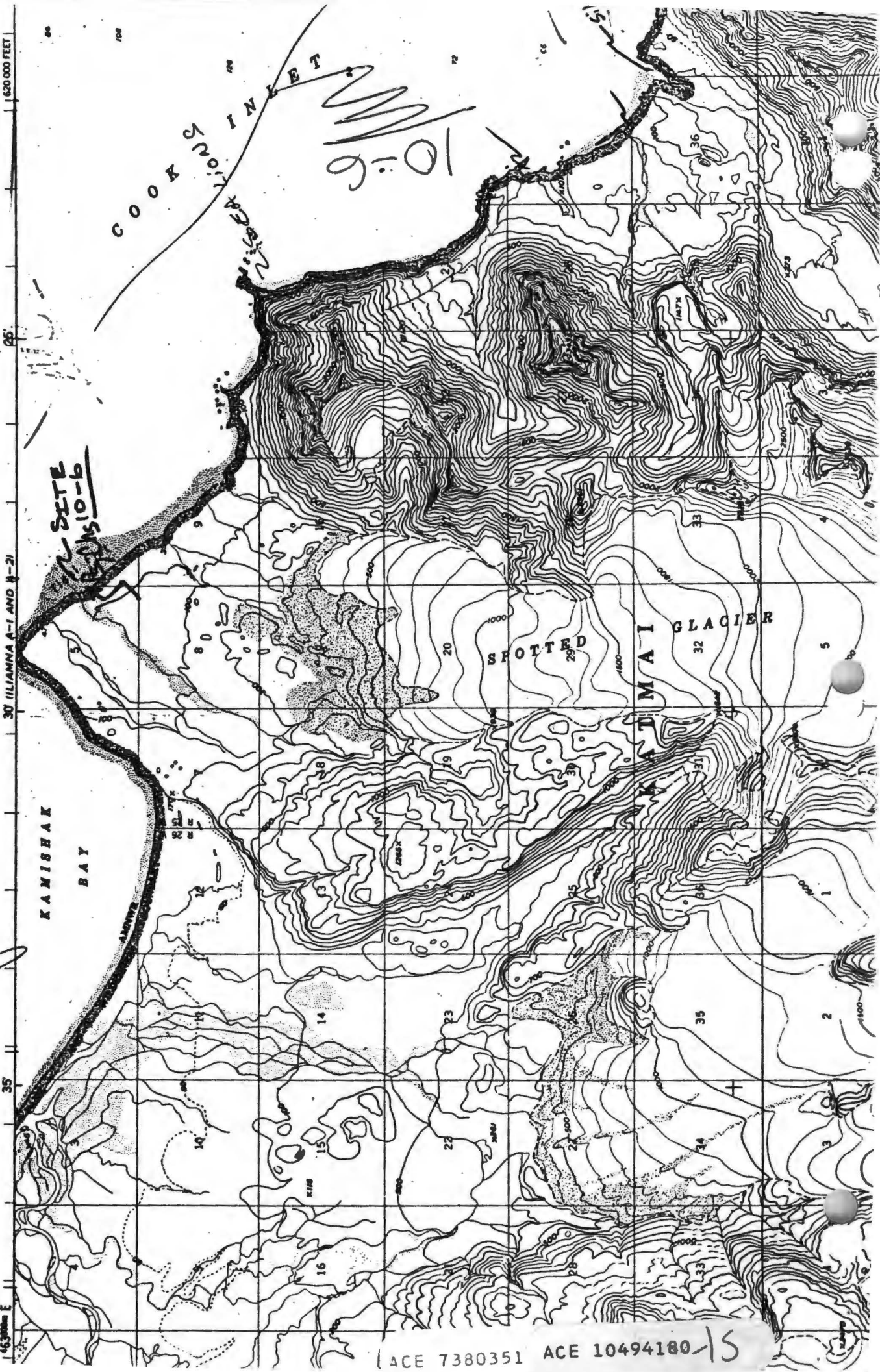
KAMISHAK
BAY

SITE
15-10-b

COOKS INLET

10:00

SPOTTED
TAMAI GLACIER



ACE 7380351 ACE 10494180-15

1989-AFHLS

Site 10-6

Directly north of Spotted Glacier

ASC NUMBER: 248-40-10105 SEGMENT NUMBER: CP-1
 LOCATION: Kamishak Bay, Directly North Spotted Glacier
 TEAM NAME:
 NIAK K-UNIT:
 USGS QUADRANGLE: Afognak D-5
 SHORELINE TYPE: Beach
 WAVE EXPOSURE: High

YR CATALOGED:

LATITUDE:
 LONGITUDE:
 LEGAL:

ALL SEGMENTS:

ASC NUMBER:
 SURVEY TYPE: 88/99
 METHOD: Foot
 DATE: 8/13/89
 START TIME: 1645
 STOP TIME: 1710

TEAM RECORDER: Doug Hill
 OBSERVERS: Lee Glenn

AGENCY(IES): ADF46

PHOTOS TAKEN? 4
 Roll #: 810421H Frames: 6-9
 VIDEO TAKEN? 4 Tape Number: 89-LP4-014-H-V
 Counter Start: 1748 → 1767

ADP
 10/3/91

SAMPLES TAKEN? 4
 SAMPLE I.D. NUMBERS: 1. ADH/LP4-8/13/89-16502.
 4. 5. 3. 6.

	LENGTH m	WIDTH m	M2	%	THICK cm	PEN cm	OIL TYPE
SITE 1	183	3	549	3	1.2	1.2	MS, TB, HOR
SITE 2							
SITE 3							
SITE 4							
SITE 5							

OVERALL OIL IMPACT 3L

OIL IN STREAM CHANNEL? N

OIL ON BEACH WITHIN 50M OF STREAM MOUTH? Yes

SUBSTRATE

Bedrock	Granule 30
Boulder	Sand 20
Cobble	Silt 20
Pebble 30	Veget.

SPECIES				
	ADP	ADP	Pink	Chum
COUNT			600	200

COMMENTS: Groups of 6mm x 6mm to 20.3 cm x 20.3cm oiled silt balls - 1 group \approx every 2.45m. There is a lot of silt on this beach and oil is ~~uncovered~~ found beneath the silt layer that is blown across the beach (much of the oil found ~~uncovered~~ was coated with a crust of silt).
 Salmon observed in clearwater tributary approx. 1/2 to 1 mile east of the river mouth. The largest channel is extremely silty.

ACE 10494181 +/S

FISH HABITAT ASSESSMENT FORM

Kamishak BAY - Spotted Glacier DD Hill

1 REGION: 2 PWS KP, CI 4 K, AP 5 OBSERVER(S) DDH Hill, Lee Glenn

248-40-10105

6 SITE NO. 10-E 7 AERIAL PHOTO NO. 9 8 CAT NO. MC

9 STREAM NAME _____ 10 LAT 58° 99' 55" 11 LONG 153° 28' 20"

12 DATE 8/13/89 13 TIME 1650 14 TIDE: Low slack Flood High slack Ebb

15 CATALOGED ANADROMOUS STREAM? Y N 16 ANAD. FISH FOUND? N

17 OIL FOUND IN STREAM? Y N 18 OIL FOUND NEAR STREAM (1 MI.)? N

19 OIL SAMPLES TAKEN? N 20 ID NOS. DDH/LPG-8/13/89-1650

21 35 mm PICTURES TAKEN? N 22 ROLL NO(S) 89-DDH

23 EXPOSURE NO.

24 DESCRIPTION

<u>6</u>	<u>Sample # DDH/LPG-8/13/89-1650</u>
<u>7</u>	<u>Location ID, Mt Douglas in Background, Sample in photo</u>
<u>8</u>	<u>Location ID, Southeast looking view - Down length of beach</u>
<u>9</u>	<u>Aerial, Mt Douglas in photo, Mouth of Stream</u>

25 VIDEO FOOTAGE TAKEN? N 26 CASSETTE NO(S) 89-LPG-D14-H-Video

27 DESCRIPTION: General location footage (1748-1767)

ACE 10494182

ACE 7380349

ANADROMOUS FISH OBSERVATIONS

	PINK	CHUM	RED	KING	COHO	DOLLY
28 Aerial	600	200				
29 Ground	600	200				

30 COMMENTS: SALMON found approx 3/4 mile from mouth of stream - Mouth extremely silty as this clearwater salmon stream merges with silted glacial stream (Bright fish)

Site 10-6

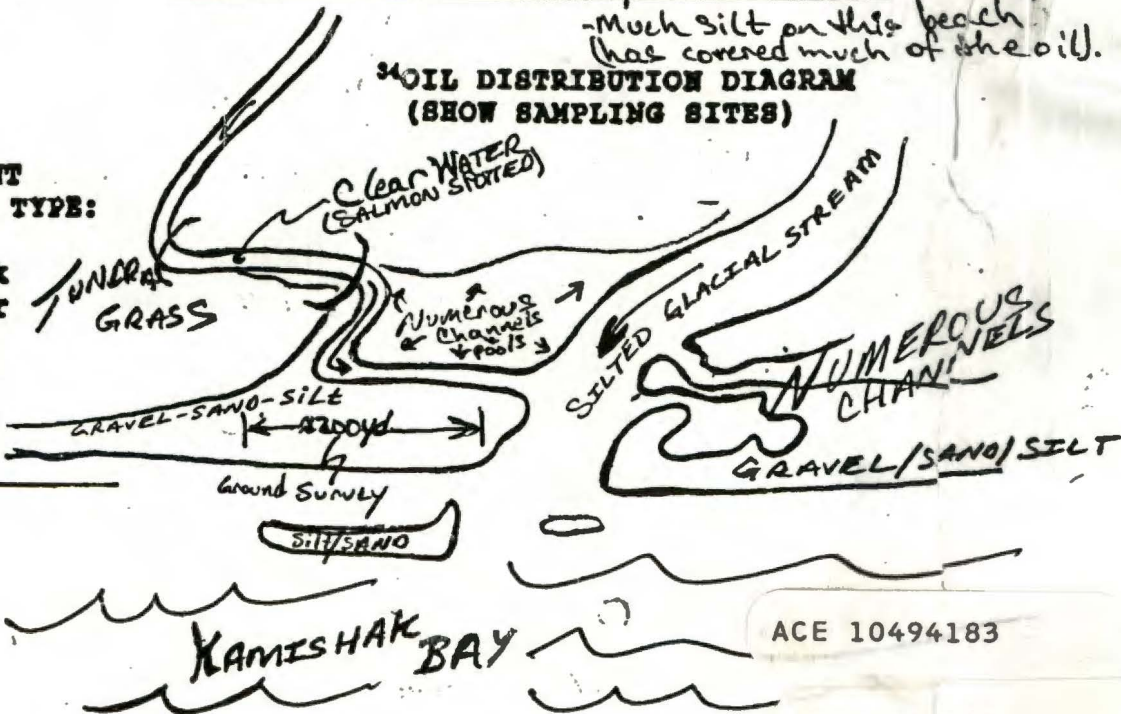
OIL OBSERVATIONS

EXTENT OF OIL:

	WITHIN STREAM	OUTSIDE STREAM
31 SURFACE COVERAGE		Groups of 4" x 4" to 8" x 8" oiled silt
32 SURFACE THICKNESS	None Observed	1 Group approx. maybe every 8' probably more. probably up to 1/2" thick -
33 PENETRATION		up to 1/2" -

- Much silt on this beach (has covered much of the oil).

34 OIL DISTRIBUTION DIAGRAM (SHOW SAMPLING SITES)



35 PREDOMINANT SUBSTRATE TYPE:

1. Bedrock
2. Boulder
3. Cobble
4. Gravel
5. Sand
6. Mud
7. Other

ACE 10494183

ACE 7380350

36 COMMENTS: Much of the oil found was crusted over with a crust of silt/sand (or silt was cemented together by oil to some degree)

ANADROMOUS FISH OBSERVATIONS

	PINK	CHUM	RED	KING	COHO	DOLLY		
28 Aerial	600	200						
29 Ground	600	200						

30 COMMENTS: SALMON found approx 3/4 mile from mouth of stream - Mouth extremely silty as this clearwater salmon stream merges with silted glacial stream
(Bright fish)

Site 10-6

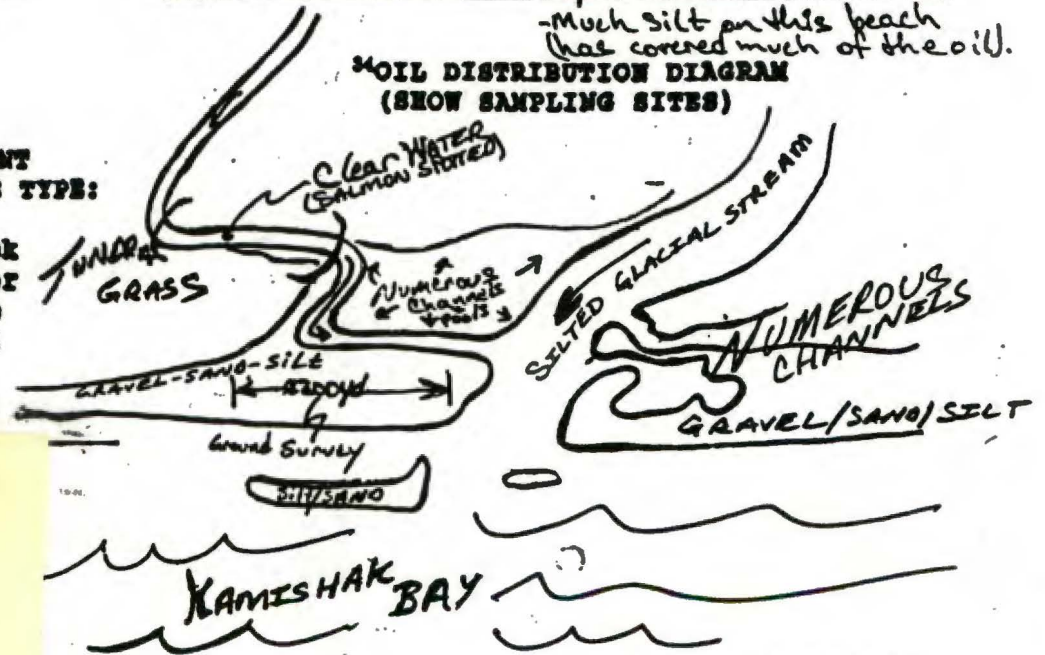
OIL OBSERVATIONS

EXTENT OF OIL:

	WITHIN STREAM	OUTSIDE STREAM
31 SURFACE COVERAGE	None Observed	Groups of 1/4" x 1/4" to 8" x 8" oiled silt & Grays Approximately every 20' probably more frequent
32 SURFACE THICKNESS	None Observed	up to 1/2" thick -
33 PENETRATION		up to 1/2" -

34 PREDOMINANT SUBSTRATE TYPE:

1. Bedrock
2. Boulder
3. Cobble
4. Gravel
5. Sand
6. Mud



Copies ripped original

ACE 7380350

35 COMMENTS: much of the oil found was encrusted over with a crust of silt/sand (or silt was cemented together by oil to some degree)

ANADROMOUS FISH OBSERVATIONS

	PINK	CHUM	RED	KING	CORO	DOLLY		
28 Aerial	600	200						
29 Ground	600	200						

30 COMMENTS: SALMON found approx 3/4 mile from mouth of stream - Mouth extremely silty as this clearwater salmon stream merges with silted glacial stream
 (Bright fish)

OIL OBSERVATIONS

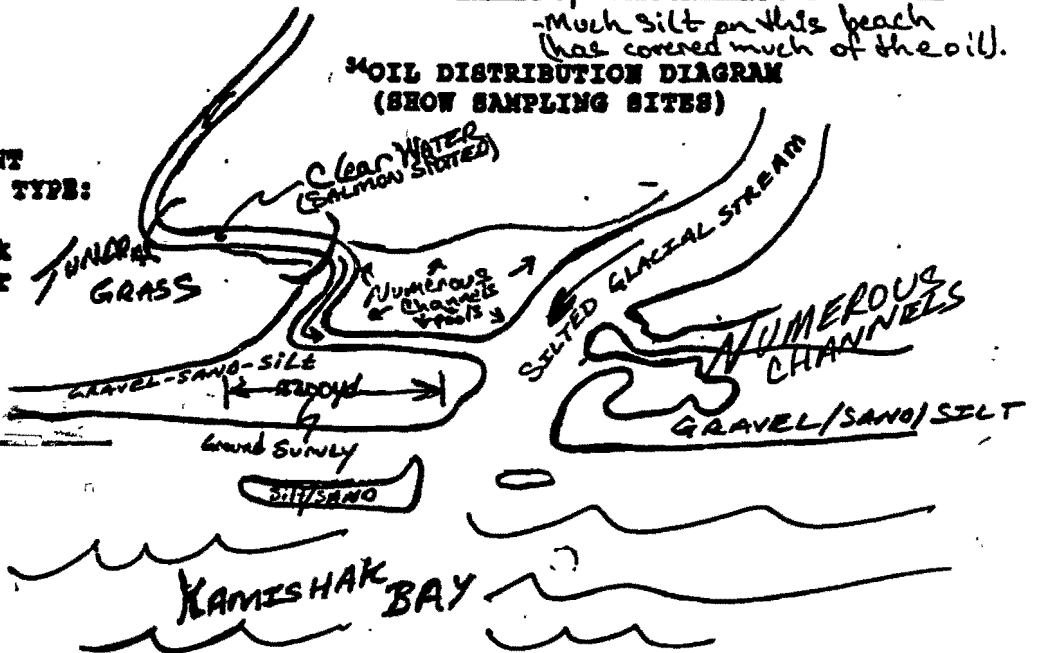
Site 10-6

EXTENT OF OIL:

	WITHIN STREAM	OUTSIDE STREAM
31 SURFACE COVERAGE		Groups of 4" x 1/4" to 8" x 8" oiled silt
32 SURFACE THICKNESS	None Observed	2 Groups Approximately every 8' probably more frequent up to 1/2" thick -
33 PENETRATION		up to 1/2" -

34 PREDOMINANT SUBSTRATE TYPE:

1. Bedrock
2. Boulder
3. Cobble
4. Gravel
5. Sand
6. Mud
7. Other



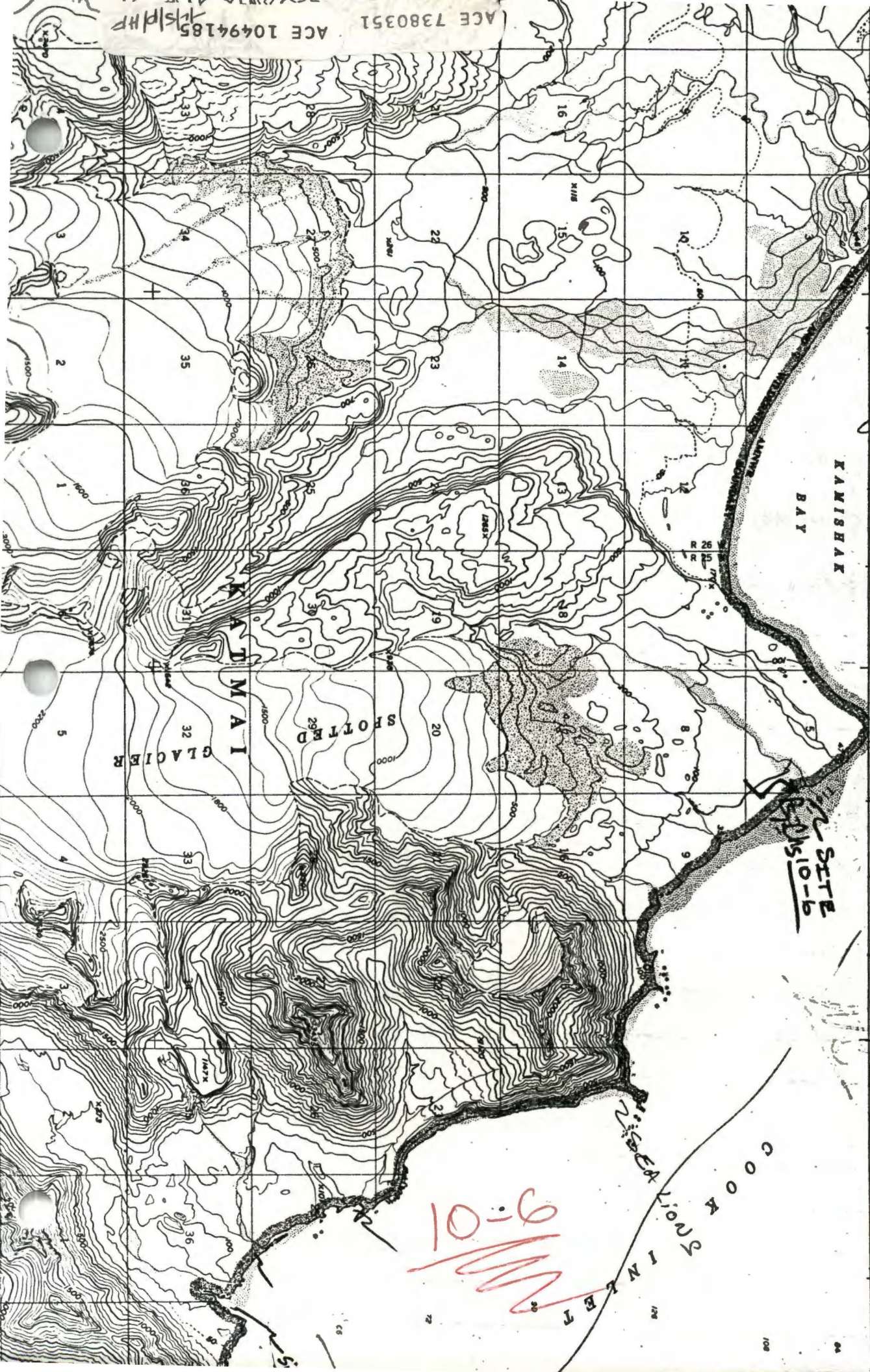
ACE 7380350

36 COMMENTS: Much of the oil found was crusted over with a crust of silt/sand (or silt was cemented together by oil to some degree)

27

430000 E
35
30 (ILLUMINA A-1 AND A-2)
25

AFONAK (D-5) QUADRA
ALASKA
1:63,360 SERIES (TOPOGRAPHIC)
620 000 FEET



ACE 7380351
ACE 10494185
KSPHP

10-6

SITE
10-6

ATMAI
GLACIER

SPOTTED
GLACIER

KANISHAK
BAY

COOK INLET