

# STATE OF ALASKA

## OFFICE OF THE GOVERNOR

815  
J  
WALTER J. HICKEL, GOVERNOR

OFFICE OF MANAGEMENT AND BUDGET  
DIVISION OF GOVERNMENTAL COORDINATION

SOUTHCENTRAL REGIONAL OFFICE  
3601 "C" STREET  
SUITE 370  
ANCHORAGE, ALASKA 99503-2798  
PHONE: 561-6131  
FAX: (907) 561-6134

CENTRAL OFFICE  
431 NORTH FRANKLIN STREET  
P.O. Box 110030  
JUNEAU, ALASKA 99811-0030  
PHONE: 465-3562  
FAX: (907) 465-3075

PIPELINE COORDINATOR'S OFFICE  
411 WEST 4TH AVENUE  
SUITE 2-C  
ANCHORAGE, AK 99501-2343  
PHONE: 278-8594 EXT. 245  
FAX: (907) 272-0690

### ALASKA COASTAL MANAGEMENT PROGRAM CONSISTENCY REVIEW INSTRUCTIONS COASTAL PROJECT QUESTIONNAIRE

Dear Applicant:

The State of Alaska uses a multiple agency coordinated system for reviewing and processing all resource-related permits, leases and other authorizations which are required for proposed projects in or affecting coastal areas of Alaska. This system, called "project consistency review," is based on the Alaska Coastal Management Program (ACMP) and is designed to improve management of Alaska's coastal land and water uses. Project proposals are reviewed to:

- Identify permits required by the State resource agencies (Alaska Departments of Environmental Conservation, Fish and Game, and Natural Resources).
- Determine the project's consistency with the standards of the ACMP and enforceable policies of approved district coastal management programs.

Participants in the State's review process include:

- You, the applicant;
- State resource agencies;
- The Division of Governmental Coordination (DGC);
- The affected local coastal community; and
- Other interested members of the public.

Your answers to this coastal project questionnaire will determine which State agency will be responsible for coordinating your consistency review. DGC will coordinate the review if:

- The project is a direct federal action,
- The project requires a federal government approval, or
- The project requires permits from more than one State agency.

If permits from only one State agency are required (and no federal agency permits are required), the State agency responsible for issuing those permits will coordinate the review.

Some projects that will have no significant impact on coastal resources, or that are routine activities, may be exempt from individual consistency review requirements. These projects are called "categorical permits" or "general concurrence determinations," respectively. The State maintains a list identifying permits and projects that qualify for these categories of expedited review. The list is referred to as the "Classification of State Agency Permits" (ABC List). Applicants must complete this coastal project questionnaire so the State can determine whether a proposed project qualifies for an expedited review. Contact DGC for more information.

The State considers all aspects of a proposed activity or project in a single consistency review. Your answers to the questions must reflect all elements of the activity, and all applications for the entire project must be submitted together. This approach eliminates repetitive ACMP reviews and decisions on the same project. However, you should be advised that individual permits may still need further review by issuing agencies for non-ACMP concerns upon completion of the ACMP consistency review.

Before you settle on your final project plans and submit your application, the State can arrange preapplication meetings among State agency representatives, coastal district representatives and yourselves to review your completed coastal project questionnaire and/or draft plans. Preapplication meetings can help identify concerns and information and promote a mutual understanding of your project. To arrange a preapplication meeting, call or write the coordinating agency contact. In lieu of a meeting, DGC can distribute materials to agencies for preliminary identification of concerns and information needs.

To start the formal review process you must complete the attached coastal project questionnaire to determine which permits will be needed. The consistency review begins upon receipt of your complete application packet by DGC or other coordinating agency. A complete application packet includes:

1. A completed, signed coastal project questionnaire. The coastal project questionnaire must contain a complete project location description;
2. Copies of any State and/or federal approval applications needed for the project (originals go to the State and/or federal agency issuing the approval), including topographic maps and plan drawings required by the approving agency(ies).
3. Any additional pertinent information, including public notices from agencies.

You must submit the completed packet to the regional office where the proposed project is located. Attached are a list of regional agency contacts and a map of the coastal area with the regions delineated. All packets must be submitted to DGC, with the following exceptions:

- If a fee is required, submit the original application, a copy of the coastal project questionnaire, and fee to the appropriate State resource agency(ies) (also send a copy of that approval application to DGC);
- If a State approval application contains confidential information, submit the entire packet to the applicable State resource agency;
- If the project involves placer mining, submit an Annual Placer Mining Application (instead of the coastal project questionnaire) to the Department of Natural Resources, Division of Mining;

- If you need permits from only one State resource agency and no federal agencies, submit the entire packet to only that State resource agency requiring the permits;
- If you are applying to grow shellfish or aquatic plants, you must submit an aquatic farm application, a coastal project questionnaire, a Corps of Engineers application, and filing fee to the Department of Natural Resources during the annual 60-day aquatic farm district opening.
- If one or more federal permits are required, submit the original application(s) and coastal project questionnaire to the federal agency and send a copy of those applications to DGC along with your complete application packet.

**REVIEW OF YOUR PROJECT WILL BEGIN ONCE DGC HAS DETERMINED THAT THE APPLICATION PACKET, INCLUDING ALL REQUISITE PERMIT APPLICATIONS, IS COMPLETE.**

**STEPS IN THE ACMP CONSISTENCY REVIEW PROCESS\***

The coordinating agency must complete the consistency review of your project within 30 or 50 days. A 30-day review schedule will be used if all associated State permits must, by statute or regulation, be issued in 30 days. A 50-day review schedule will be used for projects with permits requiring a 30-day public notice. The coordinating agency may grant extensions to these reviews as provided in 6 AAC 50.110(b). The deadlines may also be extended at the request of the applicant or to receive additional information requested by a State resource agency or an affected coastal district with an approved program. In addition, when a project involves a disposal of interest in State land or resources, the review schedule may be extended to coordinate the consistency review and DNR disposal process [6 AAC 50.110(b)(3)].

	30-Day Review	50-Day Review
<b>Start-Up: Consistency review begins</b>	Day 1	Day 1
<b>Information Requests: Deadline for reviewers to request additional information</b>	Day 15	Day 25
<b>Comment Deadline: Public, district and agency reviewer comments due</b>	Day 17	Day 34
<b>Proposed Determination: Proposed consistency determination issued</b>	Day 25	Day 44
<b>Deadline for notification of elevation</b>	Day 29	Day 49
<b>Conclusive Determination: Conclusive determination issued (unless elevation requested)</b>	Day 30	Day 50
<b>Elevation Process: If elevated, directors' determination</b>	Day 45	Day 65
<b>Elevation Process: If elevated again, commissioners' determination</b>	Day 60	Day 80

\* Some permits may involve a different review process; in all cases, the appropriate State agency regulations should be reviewed for the correct procedure.

**Start-Up:** You will be notified when the review starts. You will receive your project's State review number, review schedule and other information.

**Information Requests:** Agencies or coastal districts may request additional information from you during the review. The coordinating agency may stop the review until that information is received.

**Proposed Determination:** After reviewing comments on your project, the coordinating agency will develop a proposed consistency determination that will be presented to you, State resource agencies, and affected coastal district(s) with an approved program for review and acceptance/concurrence.

**Conclusive Determination:** A conclusive consistency determination will be issued upon agreement of the proposed determination by you, State resource agencies, and affected coastal district(s) with an approved program.

**Elevation (appeal) Process:** If you (or any other ACMP review participant with elevation rights) do not concur with the proposed determination for your project, you (or the other participants) may request elevation (further review by division directors within the State resource agencies). The directors review the proposed determination and any additional information included during the elevation process and then issue a second proposed determination.

You (or the other participants) may then elevate that determination to the commissioners of the State resource agencies if the director-level review does not satisfy your interests. Each elevation review lasts a maximum of 15 days.

If your project requires a federal approval and you disagree with the State's final conclusive consistency determination, you may also appeal to the U.S. Secretary of Commerce in Washington, D.C., as provided in 15 CFR 930.125(h). DGC can provide you information on this appeal process upon request.

**Permits:** Agencies will issue State permits covered by the conclusive consistency determination within five days after the final determination is issued, unless an agency finds that additional review is necessary to fulfill its statutory requirements. DGC can provide you with more information on additional permit reviews that may be necessary for your project.

**PLEASE KEEP THE INSTRUCTION SECTION AND CONTACT LIST OF THIS FORM FOR YOUR USE.**



## SOUTHEAST REGIONAL CONTACTS

### DEPARTMENT OF NATURAL RESOURCES

#### Oil & Gas Activities

DNR/Oil and Gas  
Frontier Building  
Box 107034  
Anchorage, AK 99510-7034  
Phone: (907) 762-2547  
Fax: (907) 562 3852  
CONTACT: Jim Haynes

#### Mineral/Metal Mining Activities

DNR/Mining  
Box 107016  
Anchorage, AK 99510-7016  
Phone: (907) 762-2109  
or 1-800 478-2154  
Fax: (907) 563-1853  
CONTACT: Judd Peterson

#### Forestry Activities

DNR/Forestry  
400 Willoughby Avenue  
Juneau, AK 99801-1796  
Phone: (907) 465-2491  
Fax: (907) 586-2752  
CONTACT: Daryl McRoberts

#### Agriculture Activities

DNR/Agriculture  
P.O. Box 949  
Palmer, AK 99645-0949  
Phone: (907) 745-7200  
Fax: (907) 745-7112  
CONTACT: John Cramer

#### Activities on State Park Lands

DNR/Parks & Outdoor Recreation  
400 Willoughby Avenue  
Juneau, AK 99801-1796  
Phone: (907) 465-4563  
Fax: (907) 465-2492  
CONTACT: Bill Garry

#### State Historic Preservation Office

DNR/SHPO  
P.O. Box 107001  
Anchorage, AK 99510-7001  
Phone: (907) 762-2626  
Fax: (907) 762-2535  
CONTACT: Judith Bittner

#### Water Related Activities

DNR/Water  
400 Willoughby Avenue  
Juneau, AK 99801-1796  
Phone: (907) 465-3400  
Fax: (907) 586-2954  
CONTACT: John Dunker

#### Aquatic Farming Activities

DNR/Land  
Box 107005  
Anchorage, AK 99510-7005  
Phone: (907) 762-2270  
Fax: (907) 561-0221  
CONTACT: Janetta Pritchard

#### All Other Activities

Southeast Regional Office  
DNR/Land  
400 Willoughby Avenue  
Juneau, AK 99801-1796  
Phone: (907) 465-3400  
Fax: (907) 586-2954  
CONTACT: Elizaveta Shadura

### DEPARTMENT OF FISH AND GAME

#### Area Offices

DFG/Habitat Division  
P.O. Box 20  
Douglas, AK 99824-0200  
Phone: (907) 465-4290  
or 465-4291  
Fax: (907) 465-2034  
CONTACT: Rick Reed

#### DFG/Habitat Division

P.O. Box 667  
Petersburg, AK 99833  
Phone: (907) 772-3801  
Fax: (907) 772-9336  
CONTACT: Don Cornelius

#### DFG/Habitat Division

2030 Sealevel Drive,  
Room 205  
Ketchikan, AK 99901  
Phone: (907) 225-2027  
Fax: (907) 225-3756  
CONTACT: Jack Gustafson

#### DFG/Habitat Division

304 Lake Street, Room 103  
Sitka, AK 99835  
Phone: (907) 747-5838  
Fax: (907) 747-6239  
CONTACT: Dave Hardy

#### Hatchery Permits

DFG/FRED Division  
1255 West Eighth Street  
P.O. Box 3-2000  
Juneau, AK 99802-2000  
Phone: (907) 465-4160  
Fax: (907) 465-4168  
CONTACT: Steve McGee or  
Kevin Duffy

### DEPARTMENT OF ENVIRONMENTAL CONSERVATION

DEC/Southeast Office  
410 Willoughby Ave. Suite 105  
Juneau, AK 99801  
Phone: (907) 465-5350  
Fax: (907) 465-5362

#### CONTACT:

- Elena Witkin-COE/Wetlands Fill;
- Ed Emswiler-Solid Waste Disposal;
- Vacant-Wastewater Disposal;
- Dan Hopson-Oil Spill Contingency Plans/Fueling Facilities

### OFFICE OF MANAGEMENT AND BUDGET

Division of Governmental  
Coordination  
P.O. Box 110030  
431 N. Franklin  
Juneau, AK 99811-0030  
Phone: (907) 465-3562  
Fax: (907) 465-3075  
CONTACT: Lorraine Marshall  
Carrie Sykes  
Susan Viteri

## SOUTHCENTRAL REGIONAL CONTACTS

### DEPARTMENT OF NATURAL RESOURCES

#### Oil and Gas Activities

DNR/Oil and Gas  
Frontier Building  
Box 107034  
Anchorage, AK 99510-7034  
Phone: (907) 762-2547  
Fax: (907) 562-3852  
CONTACT: Jim Haynes

#### Mineral/Metal Mining Activities

DNR/Mining  
Frontier Building  
Box 107016  
Anchorage, AK 99510-7016  
Phone: (907) 762-2109  
Fax: (907) 562-3587  
CONTACT: Mitch Henning

#### Forestry Activities

DNR/Forestry  
Frontier Building  
Box 107005  
Anchorage, AK 99510-7005  
Phone: (907) 762-2512  
Fax: (907) 561-2507  
CONTACT: Bill LaTocha

#### Agriculture Activities

DNR/Agriculture  
P.O. Box 949  
Palmer, AK 99645  
Phone: (907) 745-7200  
Fax: (907) 745-7112  
CONTACT: John Cramer

#### Activities on State Park Lands

DNR/Parks & Outdoor Recreation  
Frontier Building  
Box 107001  
Anchorage, AK 99510-7001  
Phone: (907) 762-2616  
Fax: (907) 762-2618  
CONTACT: Al Meiners

#### State Historic Preservation Office

DNR/SHPO  
P.O. Box 107001  
Anchorage, AK 99510-7001  
Phone: (907) 762-2626  
Fax: (907) 762-2535  
CONTACT: Judith Bittner

#### Water Related Activities

DNR/Water  
3601 "C" Street, Suite 822  
Anchorage, AK 99503  
Phone: (907) 762-2568  
Fax: (907) 563-1853  
CONTACT: Kellie Litzen

#### Aquatic Farming Activities

DNR/Land  
Box 107005  
Anchorage, AK 99510-7005  
Phone: (907) 762-2270  
Fax: (907) 561-0221  
CONTACT: Janetta Pritchard

#### All other Activities

Regional Office, DNR/Land  
Frontier Building  
Southcentral District Office  
Box 107005  
Anchorage, AK 99510-7005  
Phone: (907) 762-2249  
Fax: (907) 561-0221  
CONTACT: Larry Bullis

### DEPARTMENT OF FISH AND GAME

DFG/Habitat Division  
333 Raspberry Road  
Anchorage, AK 99518-1599  
(Southcentral except as noted below)  
Phone: (907) 267-2284  
Fax: (907) 349-1723  
CONTACT: Don McKay

Kuskokwim (above Sleetmute)  
and Yukon (above Paimiut)  
River drainages:

DFG/Habitat Division  
1300 College Road  
Fairbanks, AK 99709  
Phone: (907) 451-6192  
Fax: (907) 456-3091  
CONTACT: Al Ott

Coastal Gulf of AK drainages  
East of Cape Suckling:

DFG/Habitat Division  
304 Lake Street, Room 103  
Sitka, AK 99835-7563  
Phone: (907) 747-5828  
Fax: (907) 747-6239  
CONTACT: Dave Hardy

#### Hatchery Permits

DFG/FRED Division  
1255 West Eighth Street  
P.O. Box 2-2000  
Juneau, AK 99802-2000  
Phone: (907) 465-4160  
Fax: (907) 465-4168  
CONTACT: Steve McGee  
Kevin Duffy

### DEPARTMENT OF ENVIRONMENTAL CONSERVATION

DEC/Southcentral Office  
3601 "C" Street, Suite 1334  
Anchorage, AK 99503  
Phone: (907) 563-6529  
Fax: (907) 562-4026  
CONTACT: --  
• Joe Sautner-Oil Spill Contingency  
Plans/Fueling Facilities;  
• Ron Godden-Solid Waste Permits;  
• Robert Dolan-NPDES Permits;  
• Tim Rumfelt-COE Permits/Wetland  
fills.

### OFFICE OF MANAGEMENT AND BUDGET

Division of Governmental Coordination  
3601 "C" Street, Suite 370  
Anchorage, AK 99503-5309  
Phone: (907) 561-6131  
Fax: (907) 561-6134  
CONTACT: Faye Heitz  
Frankie Pillifant  
John Thiede  
Arlene Murphy

State Pipeline Coordinator's Office  
(for oil and gas, onshore/State waters only)  
DGC Liaison  
411 W. 4th Avenue, Suite 2-C  
Anchorage, AK 99501-2343  
Phone: (907) 278-8594 Ext. 245  
Fax: (907) 272-0690

CONTACT: Molly Birnbaum  
  
(for oil and gas, offshore OCS only)  
DGC  
P.O. Box 110030  
Juneau, AK 99811-0030  
Phone: (907) 465-3562  
Fax: (907) 465-3075  
CONTACT: Gabrielle LaRoche

## NORTHERN REGIONAL CONTACTS

### DEPARTMENT OF NATURAL RESOURCES

#### Oil and Gas Activities

DNR/Oil and Gas  
Box 107034  
Anchorage, AK 99510-7034  
Phone: (907) 762-2592  
Fax: (907) 562-3852  
CONTACT: Jim Haynes

#### Mineral/Metal Mining Activities

DNR/Mining  
3700 Airport Way  
Fairbanks, AK 99709  
Phone: (907) 451-2793  
Fax: (907) 451-2751  
CONTACT: John Wood

#### Forestry Activities

DNR/Forestry  
3700 Airport Way  
Fairbanks, AK 99709  
Phone: (907) 451-2700  
Fax: (907) 451-2751  
CONTACT: Steve Clautice

#### Agriculture Activities

DNR/Agriculture  
3700 Airport Way  
Fairbanks, AK 99709  
Phone: (907) 451-2700  
Fax: (907) 451-2751  
CONTACT: Ed Arobio

#### Activities on State Park Lands

DNR/Parks & Outdoor Recreation  
3700 Airport Way  
Fairbanks, AK 99709  
Phone: (907) 451-2700  
Fax: 451-2751  
CONTACT: Michel Lee

#### All Other Activities

Northern Regional Office  
DNR/Land  
3700 Airport Way  
Fairbanks, AK 99709  
Phone: (907) 451-2700  
Fax: (907) 451-2751  
CONTACT: Roselynn Smith

### Water Related Activities

DNR/Water  
3700 Airport Way  
Fairbanks, AK 99706-2703  
Phone: (907) 451-2073  
Fax: (907) 451-2772  
CONTACT: Jack Kerin

### State Historic Preservation Office

DNR/SHPO  
P.O. Box 107001  
Anchorage, AK 99510-7001  
Phone: (907) 762-2626  
Fax: (907) 762-2535  
CONTACT: Judith Bittner

### DEPARTMENT OF FISH AND GAME

DFG/Habitat Division  
1300 College Road  
Fairbanks, AK 99709  
Phone: (907) 451-6192  
Fax: (907) 456-3091  
CONTACT: Al Ott

#### Hatchery Permits

DFG/FRED Division  
1255 West Eighth Street  
P.O. Box 3-2000  
Juneau, AK 99802-2000  
Phone: (907) 465-4160  
Fax: (907) 465-4168  
CONTACT: Steve McGee  
Kevin Duffy

### DEPARTMENT OF ENVIRONMENTAL CONSERVATION

#### Non Oil and Gas Projects

DEC/Northern Office  
1001 Noble Street, Suite 350  
Fairbanks, AK 99701  
Phone: (907) 451-2141  
Fax: (907) 451-2187  
CONTACT: Joyce Beelman

#### North Slope Oil and Gas Projects

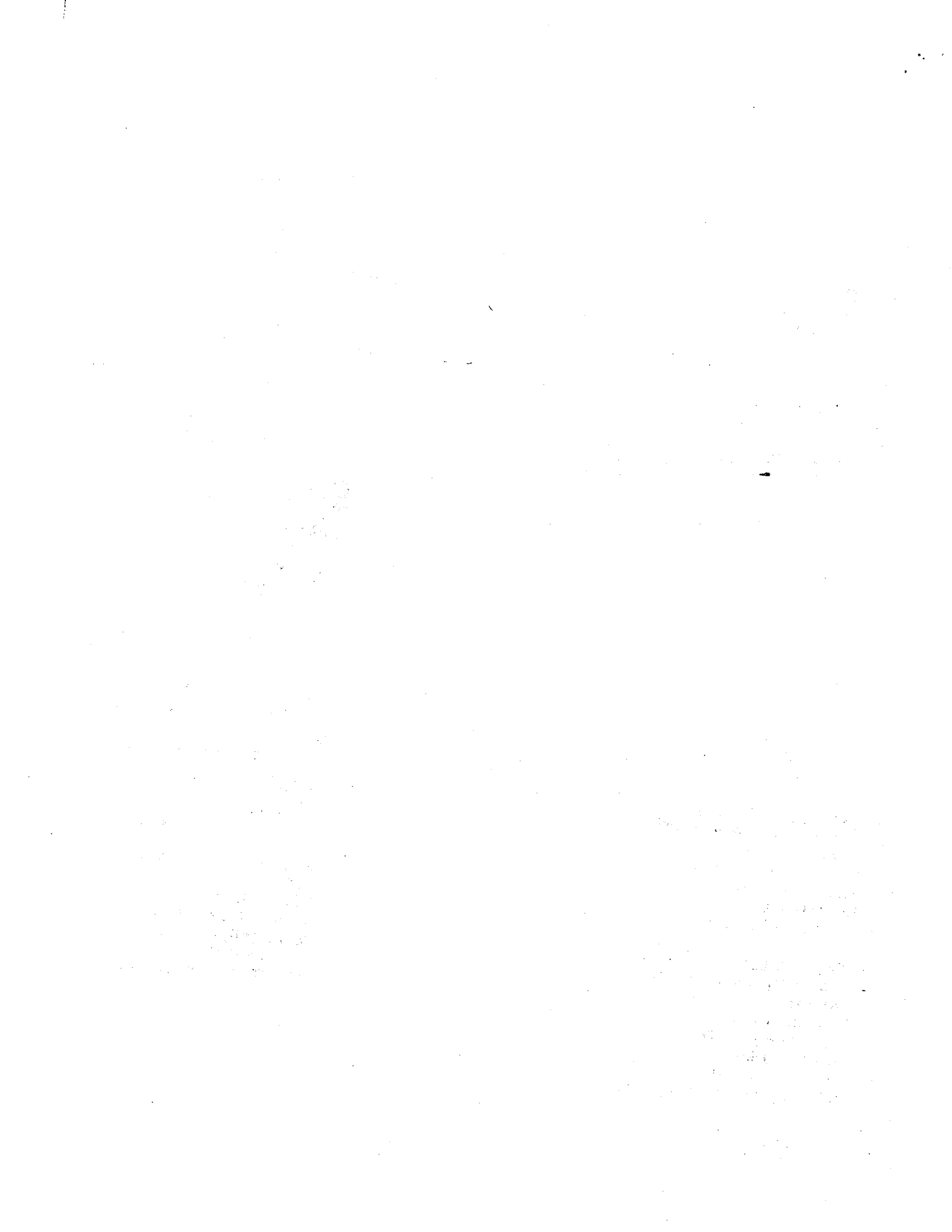
DEC/State Pipeline Coordinator's  
Office  
411 W. 4th Avenue, Suite 2C  
Anchorage, AK 99501  
Phone: (907) 278-8594  
Fax: (907) 272-0690  
CONTACT: Simon Mawson

### OFFICE OF MANAGEMENT AND BUDGET

Division of Governmental Coordination  
3601 "C" Street, Suite 370  
Anchorage, AK 99503-5309  
Phone: (907) 561-6131  
Fax: (907) 561-6134  
CONTACT: Faye Heitz  
Frankie Pillifant  
John Thiede  
Arlene Murphy

State Pipeline Coordinator's Office  
(for oil and gas, onshore/State waters only)  
DGC Liaison  
411 W. 4th Avenue, Suite 2-C  
Anchorage, AK 99501-2343  
Phone: (907) 278-8594 Ext. 245  
Fax: (907) 272-0690  
CONTACT: Molly Birnbaum

(for oil and gas, offshore OCS only)  
DGC  
P.O. Box 110030  
Juneau, AK 99811-0030  
Phone: (907) 465-3562  
Fax: (907) 465-3075  
CONTACT: Gabrielle LaRoche





# Coastal Project Questionnaire and Certification Statement

Please answer all questions. To avoid a delay in processing, please call the department if you answer "yes" to any of the questions related to that department. Maps and plan drawings must be included with your packet.

*An incomplete packet will be returned.*

**■ APPLICANT INFORMATION**

1. \_\_\_\_\_  
 Name of Applicant

\_\_\_\_\_

Address

\_\_\_\_\_

City                      State      Zip Code

\_\_\_\_\_

Daytime Phone

2. \_\_\_\_\_  
 Contact Person

\_\_\_\_\_

Address

\_\_\_\_\_

City                      State      Zip Code

\_\_\_\_\_

Daytime Phone

\_\_\_\_\_

Telecopy Number

**■ PROJECT INFORMATION**

1. Has this project ever been reviewed by the State of Alaska? ..... Yes      No  
                        
 Previous State I.D. Number: AK \_\_\_\_\_  
 Previous Project Name: \_\_\_\_\_

2. Provide a brief description of your entire project and ALL associated facilities (access roads, caretaker facilities, waste disposal sites, etc.). Please use an extra sheet of paper if necessary.

\_\_\_\_\_

\_\_\_\_\_

\_\_\_\_\_

Proposed starting date for project: \_\_\_\_\_ Proposed ending date for project: \_\_\_\_\_

3. Attach a detailed description of the project and all associated facilities. Include a project timeline for completion of all major activities in the proposal, a site plan depicting all proposed actions, and any other supporting documentation that would facilitate review of the project.

**■ PROJECT LOCATION**

1. Location of project (include nearest community or name of the land feature or body of water. Identify township, range and section): \_\_\_\_\_  
 Township \_\_\_\_\_ Range \_\_\_\_\_ Section \_\_\_\_\_ Meridian \_\_\_\_\_ Latitude/Longitude \_\_\_\_\_ / \_\_\_\_\_
2. The project is on:  State Land\*  Federal Land  Private Land  Municipal Land  
*\*State land can be uplands, tidelands, or submerged lands to 3 miles offshore. See Question #1 in DNR section.*
3. The project is located in which region (see attached map):  Northern  Southcentral  Southeast
4. Attach a copy of the topographical map with the project location marked on it.

**■ CURRENT APPROVALS**

1. Do you currently have any State or federal approvals for this project? .....  Yes  No  
*Note: Approval means permit or any other form of authorization. If "yes," please list below:*
- | Approval Type | Approval # | Expiration Date | State Review ID# (previously assigned by DGC) |
|---------------|------------|-----------------|---|
| _____         | _____      | _____           | _____   |
| _____         | _____      | _____           | _____   |
| _____         | _____      | _____           | _____   |

**■ FEDERAL APPROVALS**

1. Is the proposed project on U.S. Forest Service (USFS) land or will you need to cross USFS lands for access? .....  Yes  No  
 If yes, have you applied for or do you intend to apply for a USFS permit or approval? ...  Yes  No  
 Date of submittal: \_\_\_\_\_  
 Does the cost of the project exceed \$250,000? .....  Yes  No
2. Will you be constructing a bridge over tidal (ocean) waters, or navigable rivers, streams or lakes? .....  Yes  No  
 If yes, have you applied for or do you intend to apply for a U.S. Coast Guard permit for the bridges? .....  Yes  No  
 Date of submittal: \_\_\_\_\_
3. Will you be placing structures or fills in any of the following: tidal (ocean) waters? streams? lakes? wetlands\*? .....  Yes  No  
*\*If you are not certain whether your proposed project is in a wetlands, contact the U.S. Corps of Engineers, Regulatory Branch at (907) 753-2720 for a wetlands determination (outside the Anchorage area call toll free 1-800-478-2712.)*

If yes, have you applied for or do you intend to apply for a U.S. Army Corps of Engineers (COE) permit? Yes  No   
 Date of submittal: \_\_\_\_\_

4. Have you applied for, or do you intend to apply for a U.S. Environmental Protection Agency National Pollution Discharge Elimination System permit? *(Note: For information regarding the need for an NPDES permit, contact EPA at (907) 271-5083.)* Yes  No   
 Date of submittal: \_\_\_\_\_

5. Have you applied for or do you intend to apply for permits from any other federal agency? Yes  No

AGENCY	APPROVAL TYPE	DATE SUBMITTED
_____	_____	_____
_____	_____	_____

**DEPARTMENT OF NATURAL RESOURCES (DNR) APPROVALS**

*Note: In addition to State-owned uplands, the State owns almost all land below the ordinary high water line of navigable streams, rivers and lakes, and the mean high tide line seaward for three miles.*

1. Is the proposed project on State-owned land or will you need to cross State-owned land for access? Yes  No

2. Is any portion of your project to be placed on State-owned land below the ordinary high water line of a stream, river, or lake, or the mean high water line of a salt-water body? Yes  No

3. Do you plan to construct an aquatic farm on State-owned land? Yes  No

4. Do you plan to dredge or otherwise excavate/remove materials on State-owned land? Yes  No

Location of dredging site if other than the project site.  
*(describe):* \_\_\_\_\_  
 Township \_\_\_\_\_ Range \_\_\_\_\_ Section \_\_\_\_\_ Meridian \_\_\_\_\_

5. Do you plan to place fill or dredged material on State-owned land? Yes  No

Location of fill disposal site if other than the project site.  
*(describe):* \_\_\_\_\_  
 Township \_\_\_\_\_ Range \_\_\_\_\_ Section \_\_\_\_\_ Meridian \_\_\_\_\_  
 Source is on:  State Land  Federal Land  Private Land  Municipal Land

6. Do you plan to use any of the following State-owned resources: .....  Yes  No

*Timber:* Will you be harvesting timber?  
Amount: \_\_\_\_\_

*Materials such as rock, sand or gravel, peat, soil, overburden, etc.:*  
Which material? \_\_\_\_\_  
Amount: \_\_\_\_\_

Location of source if other than the project site:  
(describe): \_\_\_\_\_  
Township \_\_\_\_\_ Range \_\_\_\_\_ Section \_\_\_\_\_ Meridian \_\_\_\_\_

7. Are you planning to use any fresh water? .....

Amount (gallons per day): \_\_\_\_\_  
Source: \_\_\_\_\_  
Intended Use: \_\_\_\_\_

8. Will you be building or altering a dam? .....

9. Do you plan to drill a geothermal well? .....

10. At any one site (regardless of land ownership, do you plan to do any of the following? ...

- Mine five or more acres over a year's time?
- Mine 50,000 cubic yards or more of materials (rock, sand or gravel, soil, peat, overburden, etc.) over a year's time?
- Have a cumulative unreclaimed mined area of five or more acres?

If you plan to mine less than the acreage/amount stated above and have a cumulative unreclaimed mined area of less than five acres, do you intend to file a voluntary reclamation plan for approval? .....

11. Will you be exploring for or extracting coal? .....

12. Will you be drilling for oil/gas? .....

13. Will you be investigating or removing historical or archaeological resources on State-owned land? .....

14. Is the proposed project located in a unit of the Alaska State Park System? .....

If you answered "No" to ALL questions in this section, you do not need an approval from DNR. Continue to next section.

If you answered "Yes" to ANY questions in this section, contact DNR to identify and obtain necessary application forms.

Based on your discussion with DNR, please complete the following:

Approval Type \_\_\_\_\_ Date Submitted \_\_\_\_\_  
\_\_\_\_\_  
\_\_\_\_\_

15. Have you paid the filing fees required for the DNR permits? .....  Yes  No
16. If you answered yes to any questions and are not applying for DNR permits, indicate reason below:
- a. \_\_\_\_\_ (DNR contact) told me on \_\_\_\_\_ that no DNR approvals or permits were required on this project. Reason given by DNR: \_\_\_\_\_  
\_\_\_\_\_
- b. Other: \_\_\_\_\_

■ DEPARTMENT OF FISH & GAME (DFG) APPROVALS

1. Will you be working in, or placing anything in, a stream, river or lake? (This includes work in running water or on ice, within the active flood plain, on islands, the face of the banks or the tidelands down to mean low tide.) .....  Yes  No  
Name of  stream,  river, or  lake: \_\_\_\_\_
2. Will you do any of the following? .....  Yes  No

Please indicate below:

- |  |  |
|--|--|
| <input type="checkbox"/> Build a dam, river training structure or instream impoundment?  | <input type="checkbox"/> Alter or stabilize the banks?   |
| <input type="checkbox"/> Use the water?  | <input type="checkbox"/> Mine or dig in the beds or banks?   |
| <input type="checkbox"/> Pump water out of the stream or lake?   | <input type="checkbox"/> Use explosives?   |
| <input type="checkbox"/> Divert or alter the natural stream channel?   | <input type="checkbox"/> Build a bridge (including an ice bridge)?   |
| <input type="checkbox"/> Block or dam the stream (temporarily or permanently)?   | <input type="checkbox"/> Use the stream as a road (even when frozen), or crossing the stream with tracked or wheeled vehicles, log-dragging or excavation equipment (back-hoes, bulldozers, etc.)? |
| <input type="checkbox"/> Change the water flow or the water channel?   | <input type="checkbox"/> Install a culvert or other drainage structure?  |
| <input type="checkbox"/> Introduce silt, gravel, rock, petroleum products, debris, chemicals, or other organic/inorganic waste of any type into the water? | <input type="checkbox"/> Construct a weir?   |
|  | <input type="checkbox"/> Use an in-stream structure not mentioned here?  |

If yes, describe: \_\_\_\_\_  
\_\_\_\_\_



3. Is your project located in a designated State Game Refuge, Critical Habitat Area or State Sanctuary? . . . . .  Yes  No
4. Does your project include the construction/operation of a salmon hatchery? . . . . .  Yes  No
5. Does your project affect, or is it related to, a previously permitted salmon hatchery? . . . . .  Yes  No
6. Does your project include the construction of an aquatic farm? . . . . .  Yes  No

**If you answered "No" to ALL questions in this section, you do not need approval from DFG. Continue to next section.**

**If you answered "Yes" to ANY questions under 1-3, contact the Regional DFG Habitat Division Office for information and application forms.**

**If you answered "Yes" to questions 4-6, contact the DFG at the FRED division headquarters for information and application forms.**

Based on your discussion with DFG, please complete the following:

<u>Approval Type</u>	<u>Date Submitted</u>
_____	_____
_____	_____

7. If you answered yes to any questions and are not applying for DFG permits, indicate reason below:
- a. \_\_\_\_\_ (DFG contact) told me on \_\_\_\_\_ that no DFG approvals or permits were required on this project. Reason given by DFG: \_\_\_\_\_
- b. Other: \_\_\_\_\_

**■ DEPARTMENT OF ENVIRONMENTAL CONSERVATION (DEC) APPROVALS**

1. Will a discharge of wastewater or stormwater drainage from industrial or commercial operations occur including marine drainage? . . . . .  Yes  No
- If so, will you be connecting to an already approved sewer system? . . . . .  Yes  No
2. Do you intend to construct, install or modify any part of a wastewater (sewage or greywater) disposal system? . . . . .  Yes  No
- a) If so, will the discharge be 500 gpd or greater? . . . . .  Yes  No
- b) If constructing a domestic wastewater treatment or disposal system, will the system be located within fill material? . . . . .  Yes  No

If your previous answer is yes, answer the following:

Yes No

1) How deep is the bottom of the system to the top of the subsurface water table? \_\_\_\_\_

2) How far is any part of the wastewater disposal system from the nearest surface water? \_\_\_\_\_

3) Is the surrounding area inundated with water at any time of the year? . . . .

4) How big is the fill area to be used for the absorption system? \_\_\_\_\_

(Questions 1 & 2 will be used by DEC to determine whether separation distances are being met; Questions 3 & 4 relate to the required size of the fill if wetlands are involved.)

3. Do you expect to request a mixing zone for your proposed project? (If your wastewater discharge will exceed Alaska water quality standards, you may apply for a mixing zone. If so, please contact DEC to discuss information required under 18 AAC 70.032.)

4. Will the project result in either of the following:

Dredging in a wetland or other water body?

Placement of fill materials or a structure in a wetland or other waterbody?

(Note: Your application for this activity to the Corps of Engineers also serves as your application to DEC.)

5. Do you plan to store or dispose of any type of solid waste at the project site? . . . . .

6. Will your project require the application of oil, pesticides, and/or any other broadcast chemicals to the surface of the land and/or the waters of the state? . . . . .

7. a. Will you have a facility that will generate air emissions from processing greater than five tons per hour of material? . . . . .

b. Will you have one or more units of fuel burning equipment, including flaring, with a heat input rating of 50 million Btu per hour or more? . . . . .

c. 1) Will you have a facility containing incinerators with a total charging capacity of 1,000 pounds per hour or more? . . . . .

2) Do you incinerate sludge? . . . . .

d. Will you have any of the following processes: . . . . .

- Asphalt plant
- Petroleum refinery
- Petroleum Contaminated Soils Cleanup
- Coal preparation facility
- Portland cement plant

e. Will your facility use the following equipment? . . . . .

- diesel internal combustion engines? (Total capacity equal to or greater than 1,750 kilowatts or total rated brake specific horsepower greater than 2350 bhp)
- gas fired boilers (Total heat input rating of 100 million Btu per hour)
- oil fired boilers (Total heat input rating of 65 million Btu per hour)
- combustion turbines (total rated power output of 8,000 Hp)

- f. Will your facility burn more than the following per year in stationary equipment? Yes  No   
 1,000,000 gallons of fuel oil  
 900 million cubic feet of natural gas  
 35,000 tons of coal
- g. If you have answered "yes" to any of the above questions (7 a-f), have you installed, replaced or modified any fuel burning or processing equipment since 1977?
8. Will you be developing, constructing, installing, or altering a public water system?
9. a. Will your project involve the operation of waterborne tank vessels or oil barges that carry crude or non-crude oil as bulk cargo, or the transfer of oil or other petroleum products to or from such a vessel or a pipeline system?    
b. Will your project require or include onshore or offshore oil facilities with an effective aggregate storage capacity of greater than 5,000 barrels of crude oil or greater than 10,000 barrels of non-crude oil?    
c. Will you be operating facilities on the land or water for the exploration or production of hydrocarbons?
10. Will you be subdividing lands into two or more lots (parcels)?

If you answered NO to ALL questions in this section, you do not need a permit or approval from DEC. Please continue to certification statement.

If you answered YES to ANY of these questions (see #4 note), contact the DEC Regional office for information and application forms.

Based on your discussion with DEC, please complete the following:

<u>Approval Type</u> _____	<u>Date Submitted</u> _____
_____	_____
_____	_____

11. If you answered yes to any questions and are not applying for DEC permits, indicate reason below:
- a. \_\_\_\_\_ (DEC contact) told me on \_\_\_\_\_ that no DEC approvals or permits were required on this project. Reason given by DEC: \_\_\_\_\_
- b. Other: \_\_\_\_\_



