

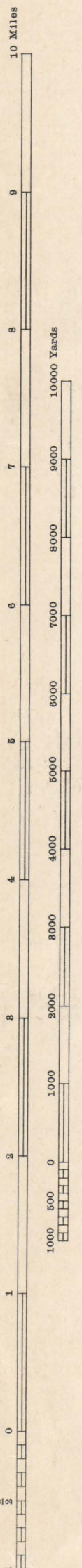
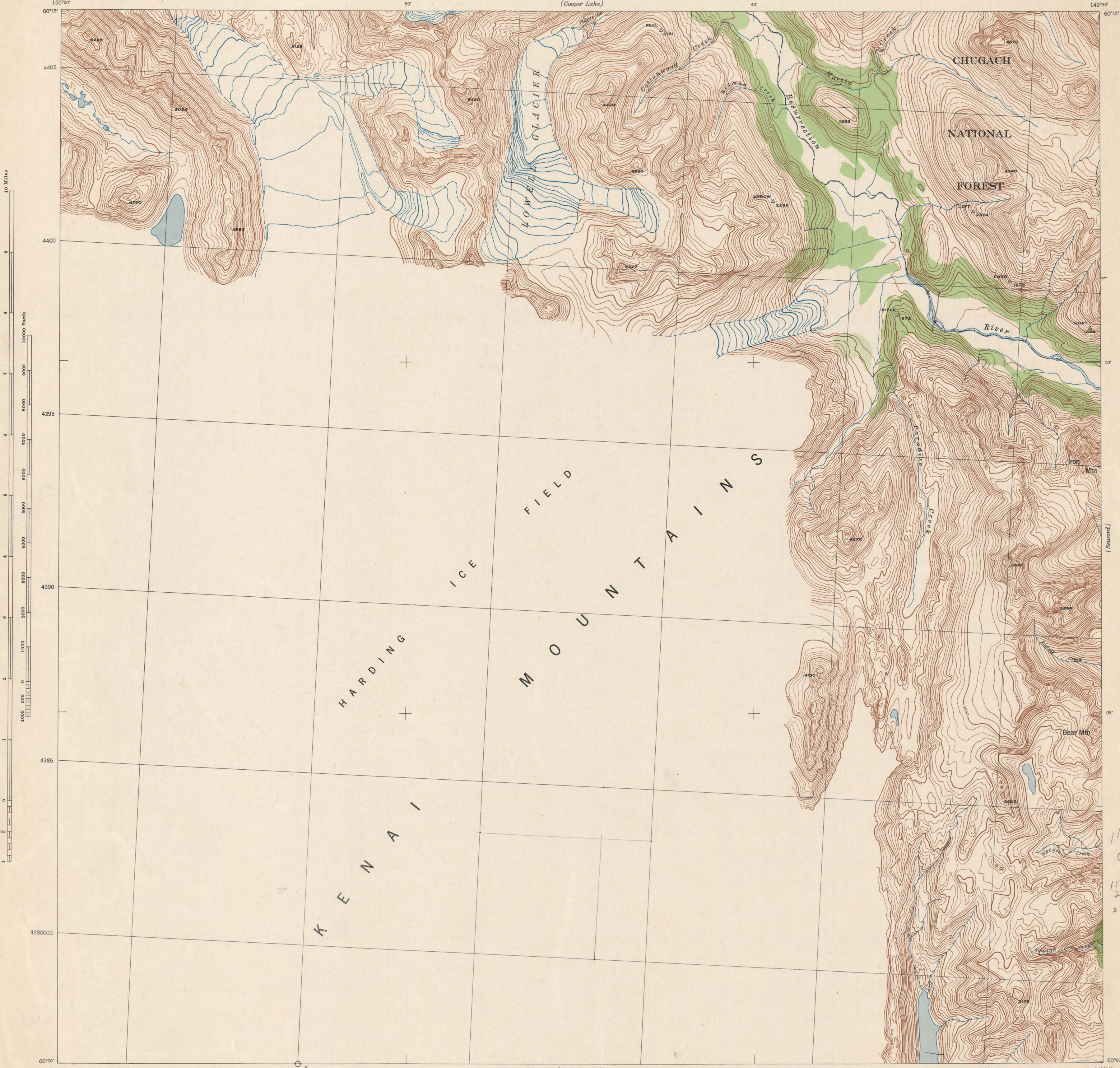
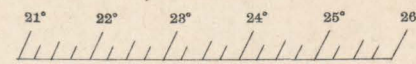
RESTRICTED

ALASKA  
LOWELL GLACIER QUADRANGLE  
GRID ZONE "B" BAND II N  
N6000-W14930/15X30

WAR DEPARTMENT  
CORPS OF ENGINEERS, U. S. ARMY

RESTRICTED

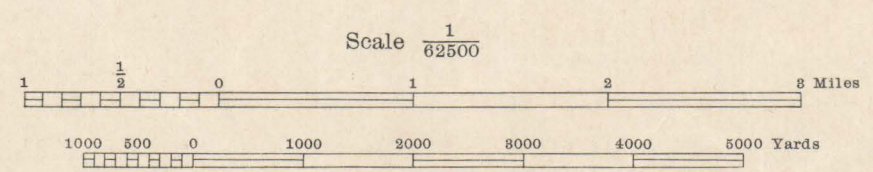
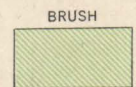
ALASKA  
LOWELL GLACIER QUADRANGLE  
GRID ZONE "B" BAND II N  
15X30 MINUTE SERIES



11.7  
65  
11.7  
23.4  
28

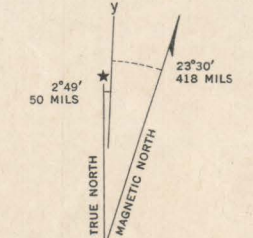
Prepared under the direction of the Chief of Engineers, U. S. Army, 1943.  
Horizontal control by 29th Engineers, U. S. Army, 1942.  
Vertical control by 29th Engineers, U. S. Army, 1942.  
Topography by 29th Engineers, U. S. Army, 1943, utilizing multiplex aero-  
projectors from Tandem T-3A (5 lens) aerial photographs.  
Photography by 2nd Photographic Squadron, Air Corps, U. S. Army, 1941.  
Polyconic Projection, Valdez Datum.

**ROAD CLASSIFICATION**  
Dependable hard surface, heavy duty road  
Secondary, hard surface, all weather road  
Loose surface graded, dry weather road  
Dirt road  
More than two lanes indicated by note with tick at point of change.  
1 LANE | 4 LANE  
Road Data 1942



Scale 1/62500  
Contour interval 100 feet  
Datum is mean sea level

FIVE THOUSAND YARD WORLD POLYCONIC GRID, ZONE "B" BAND II N  
(THE LAST THREE DIGITS OF THE GRID NUMBERS ARE OMITTED)  
NOTE: OFFICERS USING THIS MAP WILL MAKE MERIDIAN CORRECTIONS AND ADDITIONS WHICH COME TO THEIR ATTENTION AND MAIL DIRECT TO THE CHIEF OF ENGINEERS, WASHINGTON, D. C.



APPROXIMATE MEAN DECLINATION 1943 FOR CENTER OF SHEET  
ANNUAL MAGNETIC CHANGE 0.6' DECREASE  
USE DIAGRAM ONLY TO OBTAIN NUMERICAL VALUES. TO DETERMINE MAGNETIC NORTH LINE, CONNECT THE POINT "M" ON THE SOUTH EDGE OF THE MAP WITH THE VALUE OF THE ANGLE BETWEEN GRID AND MAGNETIC NORTH AS PLOTTED ON THE DEGREE SCALE AT THE NORTH EDGE OF THE MAP.

29TH ENGINEER REPRODUCTION PLANT, PORTLAND, OREGON  
AMS NO. 121130  
1943

RESTRICTED  
LOWELL GLACIER, ALASKA  
N6000-W14930/15X30

FILE COPY

CLASSIFICATION CANCELLED BY  
AUTHORITY OF CHIEF OF ENGINEERS  
LETTER OF  
JAN 22 1946

30