

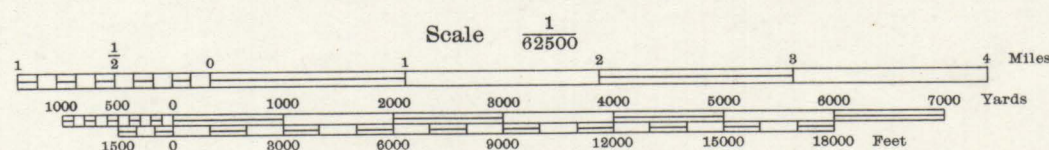
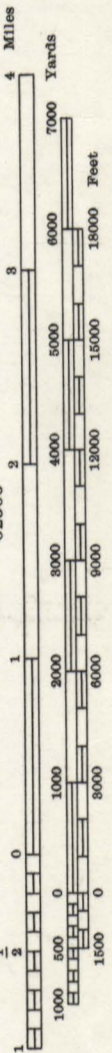
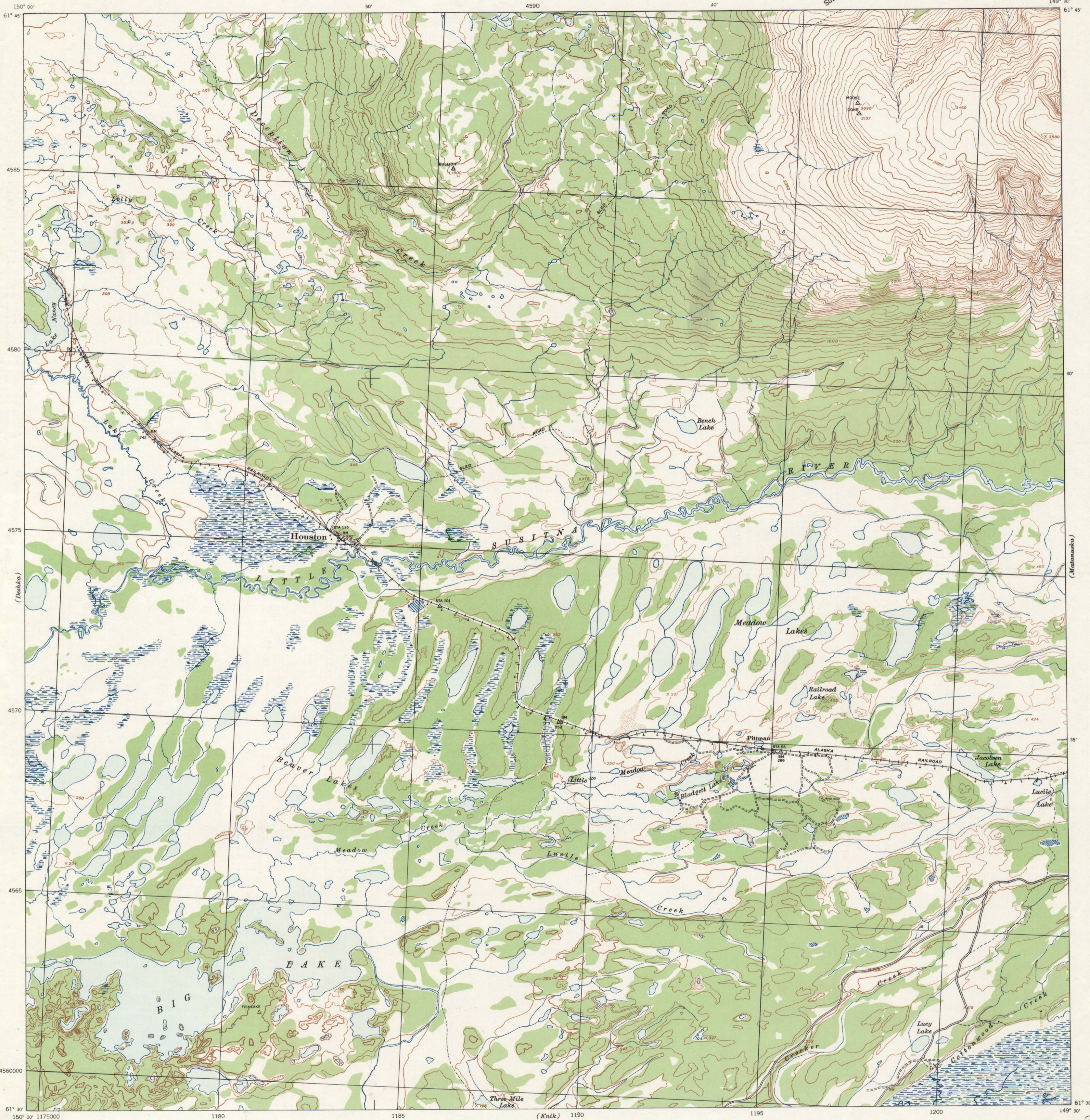
RESTRICTED

CORPS OF ENGINEERS, U. S. ARMY
TACTICAL MAP

Advance Edition
Subject to Correction

ALASKA
HOUSTON QUADRANGLE
GRID ZONE "K"

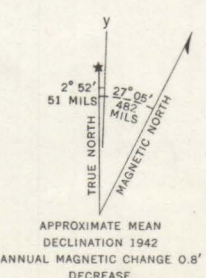
(Isho Peak)



Scale 1/82500
Contour interval 50 feet
Datum is mean sea level

FIVE THOUSAND YARD GRID COMPUTED FROM "GRID SYSTEM (EXTENSION TABLES FOR LAT. 45° TO 72° NORTH LATITUDE) FOR PROGRESSIVE MAPS IN U. S. ZONE 'K', U. S. C. & G. S., SPECIAL PUBLICATION NO. 59. (THE LAST THREE DIGITS OF THE GRID NUMBERS ARE OMITTED.)
NOTE: OFFICERS USING THIS MAP WILL NEED CORRECTIONS AND ADDITIONS WHICH COME TO THEIR ATTENTION AND MAIL DIRECT TO "THE CHIEF OF ENGINEERS, WASHINGTON, D. C."

CLASSIFICATION CANCELLED BY
AUTHORITY OF CHIEF OF ENGINEERS
LETTER OF
JAN 22 1946



29TH ENGINEER BATTALION REPRODUCTION PLANT, PORTLAND, OREG. 1942

RESTRICTED

HOUSTON, ALASKA
N6130-W14930/15X30

5

Prepared under the direction of the Chief of Engineers and the Commanding General, Fourth Army, U. S. Army, 1942.
Horizontal control by the 29th Engineers, U. S. Army, 1941.
Vertical control by 29th Engineers, U. S. Army, 1941.
Topography by 29th Engineers, U. S. Army, 1942, utilizing multiplex aero-
projectors.
Photography by 2nd Photographic Squadron, Air Corps, U. S. Army, 1941,
using tandem T-3A (five lens) cameras.
Polyconic Projection, Valdez Datum.

ROAD CLASSIFICATIONS

Dependable hard surface, Loose surface graded, heavy duty road, dry weather road, Secondary, hard surface, Unimproved road, all weather road,

More than two lanes indicated by note along road with tick at point of change.

3 LANE 4 LANE