

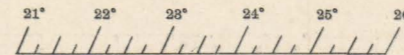
RESTRICTED

RESTRICTED

WAR DEPARTMENT
CORPS OF ENGINEERS, U. S. ARMY

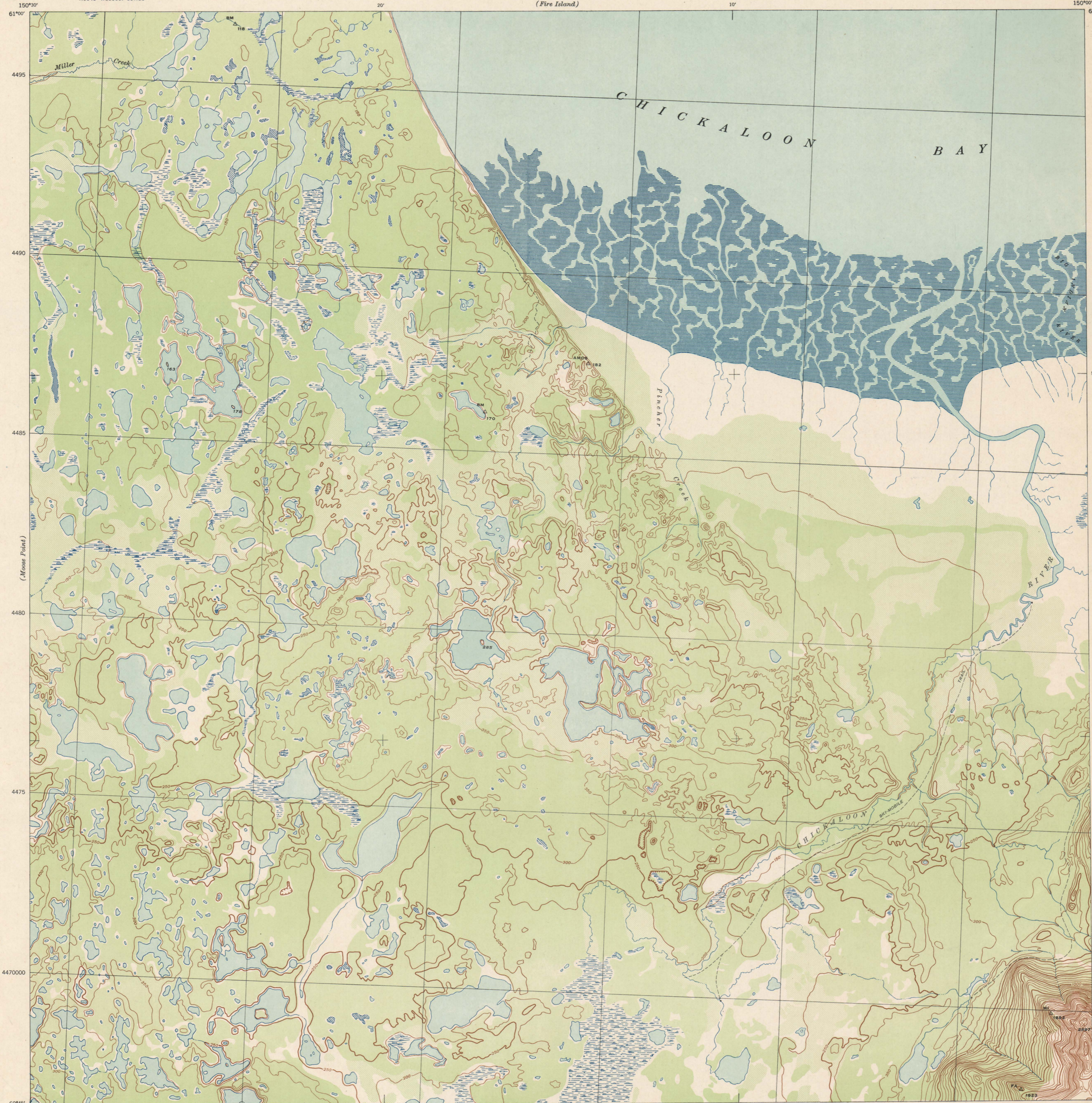
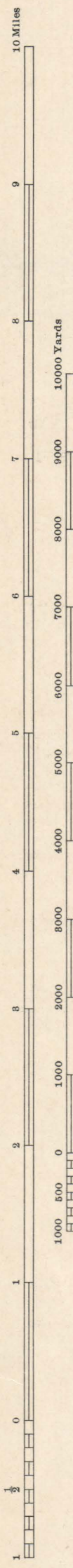
ALASKA
CHICKALOON BAY QUADRANGLE
GRID ZONE "B" BAND II N
15 X 30 MINUTE SERIES

ALASKA
CHICKALOON BAY QUADRANGLE
GRID ZONE "B" BAND II N
N6045-W15000-15X30



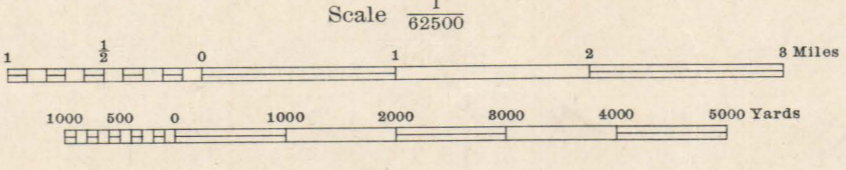
(Fire Island)

(Anchorage)



Prepared under the direction of the Chief of Engineers, U. S. Army, 1943.
Horizontal control by 29th Engineers, U. S. Army, 1942.
Vertical control by 29th Engineers, U. S. Army, 1942.
Topography by 29th Engineers, U. S. Army, 1943, utilizing multiplex aero-projectors from Tandem T-3A (five lens) aerial photographs.
Photography by 2nd Photographic Squadron, Air Corps, U. S. Army, 1941.
Polyconic Projection, Valdez Datum.

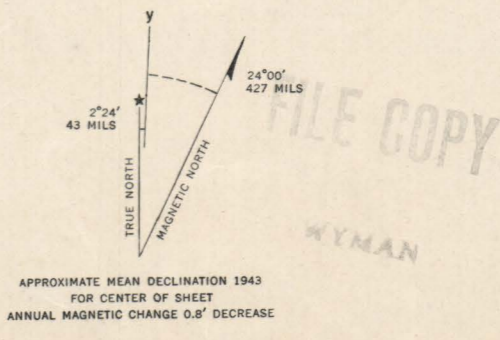
ROAD CLASSIFICATION
Dependable hard surface, heavy duty road
Loose surface graded, dry weather road
Secondary, hard surface, all weather road
Dirt road
More than two lanes indicated by note with tick at point of change.
Road Data 1942



Scale 1/25000
1/62500
Contour interval 50 feet
Datum is mean sea level

FIVE THOUSAND YARD WORLD POLYCONIC GRID, ZONE "B" BAND II N
(THE LAST THREE DIGITS OF THE GRID NUMBERS ARE OMITTED)
NOTE: OFFICERS USING THIS MAP WILL MARK PERSON CORRECTIONS AND ADDITIONS WHICH COME TO THEIR ATTENTION AND MAIL DIRECT TO THE CHIEF OF ENGINEERS, WASHINGTON, D. C.

CLASSIFICATION CANCELLED BY
AUTHORITY OF CHIEF OF ENGINEERS
LETTER OF
JAN 22 1946



RESTRICTED
CHICKALOON BAY, ALASKA
N6045-W15000-15X30

USE DIAGRAM ONLY TO OBTAIN NUMERICAL VALUES. TO DETERMINE MAGNETIC NORTH LINE, CONNECT THE PIVOT POINT "P" ON THE SOUTH EDGE OF THE MAP WITH THE VALUE OF THE ANGLE BETWEEN GRID AND MAGNETIC NORTH AS PLOTTED ON THE DEGREE SCALE AT THE NORTH EDGE OF THE MAP.

19