

RESTRICTED

ALASKA

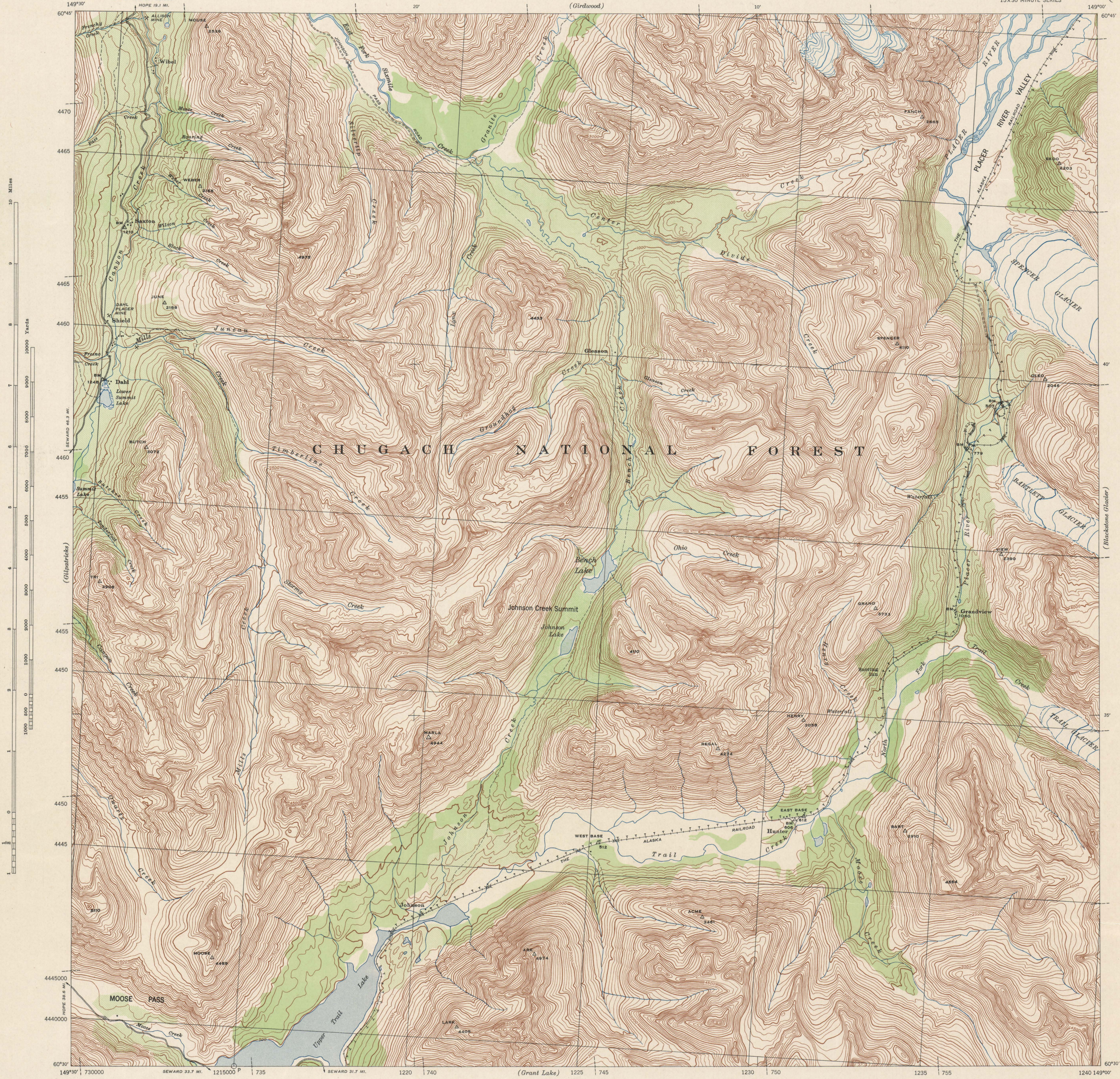
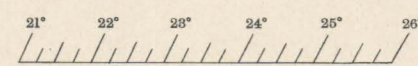
BENCH LAKE QUADRANGLE
GRID ZONE "B" BAND II N
N6030-W14900/15X30

WAR DEPARTMENT
CORPS OF ENGINEERS, U. S. ARMY

RESTRICTED

ALASKA

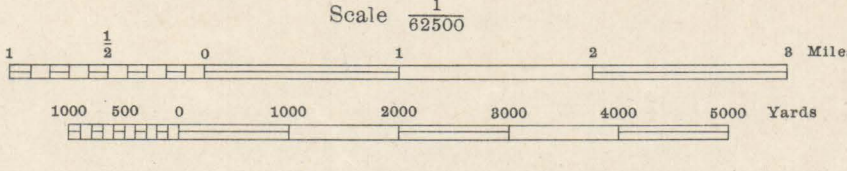
BENCH LAKE QUADRANGLE
GRID ZONE "B" BAND II N
15X30 MINUTE SERIES



FILE COPY

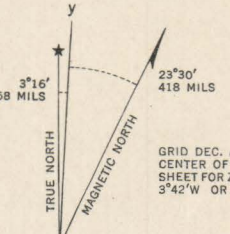
Prepared under the direction of the Chief of Engineers, U. S. Army, 1943.
Horizontal control by U. S. Department of Agriculture, 1939 and 29th Engineers, U. S. Army, 1942.
Vertical control by U. S. Coast and Geodetic Survey, 1923, U. S. Department of Agriculture, 1939, and 29th Engineers, U. S. Army, 1942.
Topography by 29th Engineers, U. S. Army, 1943, utilizing multiplex aeroprojectors from Tandem T-3A (5 lens) aerial photographs.
Photography by 2nd Photographic Squadron, Air Corps, U. S. Army, 1941.
Polyconic Projection, Valdez Datum.

ROAD CLASSIFICATION
Dependable hard surface, heavy duty road
Secondary, hard surface, all weather road
More than two lanes indicated by note with tick at point of change.
Loose surface graded, dry weather road
Dirt road
Road Data 1942



Scale 1/62500
Contour interval 100 feet
Datum is mean sea level

FIVE THOUSAND YARD WORLD POLYCONIC GRID, ZONE "B" BAND II N
(THE LAST THREE DIGITS OF THE GRID NUMBERS ARE OMITTED)
THE OVERLAPPING GRID ZONE "A" IS INDICATED BY SHORT BROKEN TICKS CROSSING THE HEAT LINE
NOTE: OFFICERS USING THIS MAP WILL MAKE NECESSARY CORRECTIONS AND ADJUSTMENTS WHICH COME TO THEIR ATTENTION AND MAIL DIRECT TO "THE CHIEF OF ENGINEERS, WASHINGTON, D. C."



APPROXIMATE MEAN DECLINATION 1943
FOR CENTER OF SHEET
ANNUAL MAGNETIC CHANGE 0.7' DECREASE
USE DIAGRAM ONLY TO OBTAIN NUMERICAL VALUES. TO DETERMINE MAGNETIC NORTH LINE, CONNECT THE PIVOT POINT "PM" ON THE SOUTH EDGE OF THE MAP WITH THE VALUE OF THE ANGLE BETWEEN GRID AND MAGNETIC NORTH AS PLOTTED ON THE DEGREE SCALE AT THE NORTH EDGE OF THE MAP.

DECLASSIFIED
by authority C.O., Army Map Service
C.E., U.S. Army, Wash., D. C.

RESTRICTED
BENCH LAKE, ALASKA
N6030-W14900/15X30