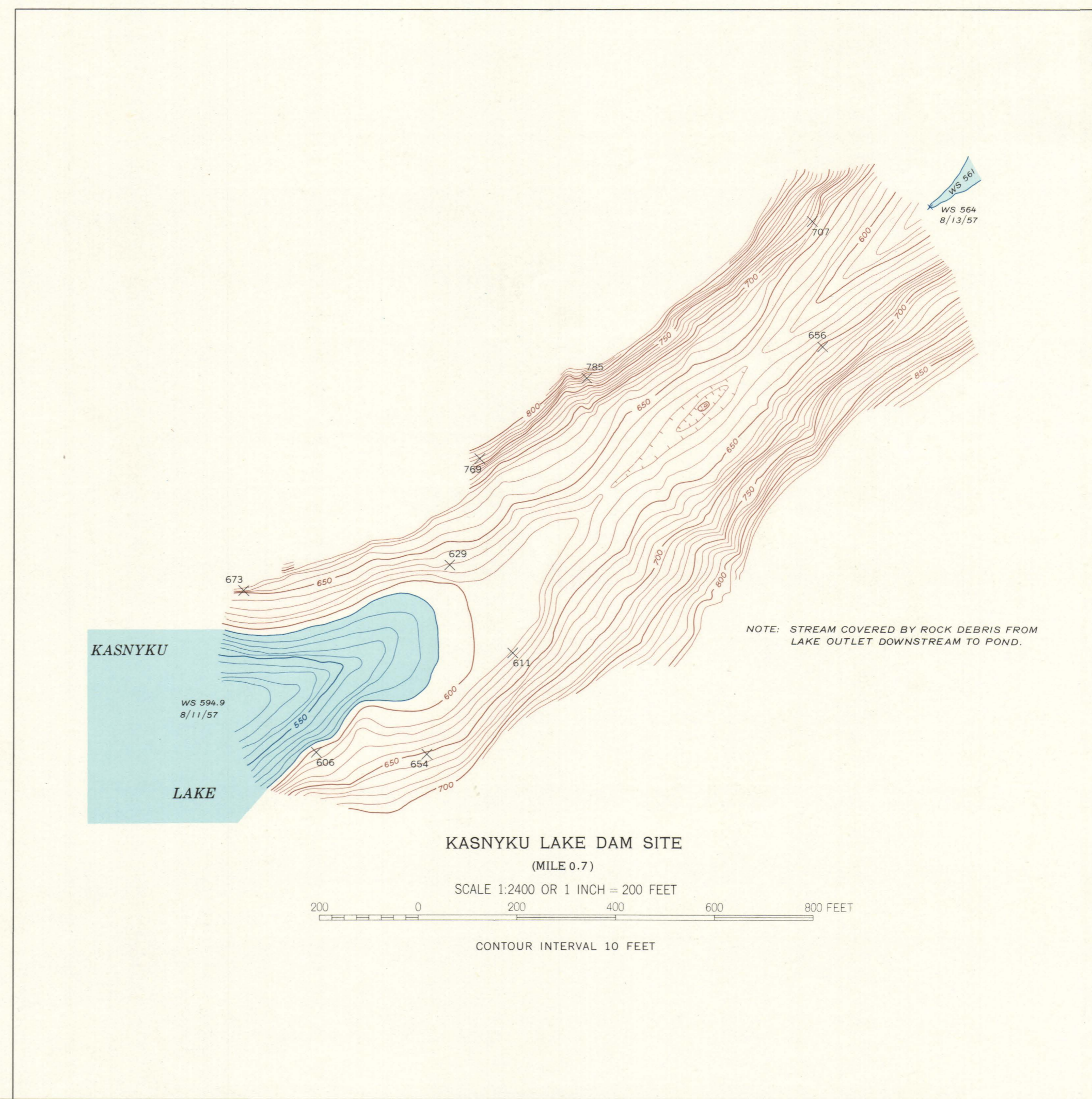
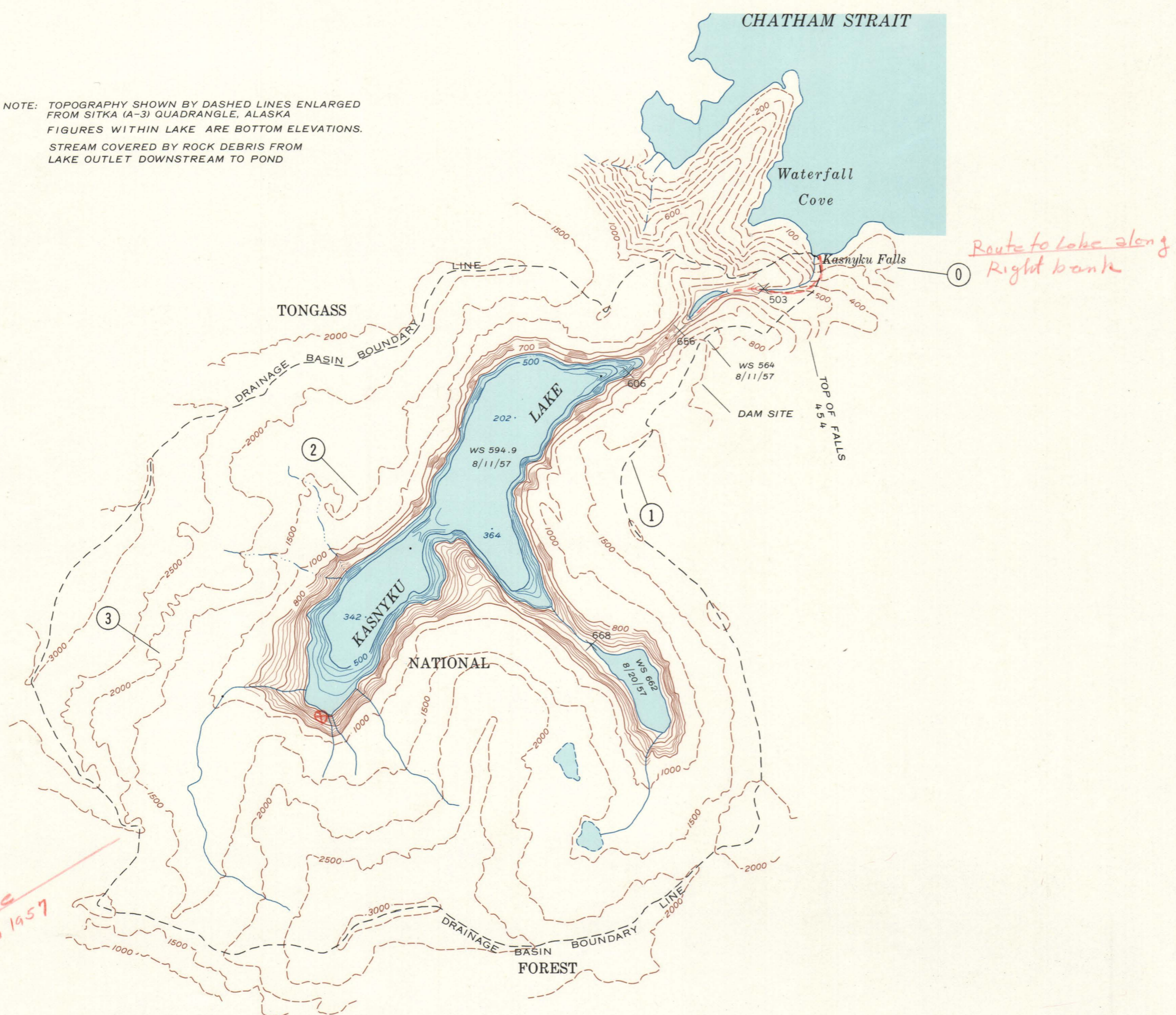


APPROXIMATE TIDE PLANES KASNYKU BAY, ALASKA

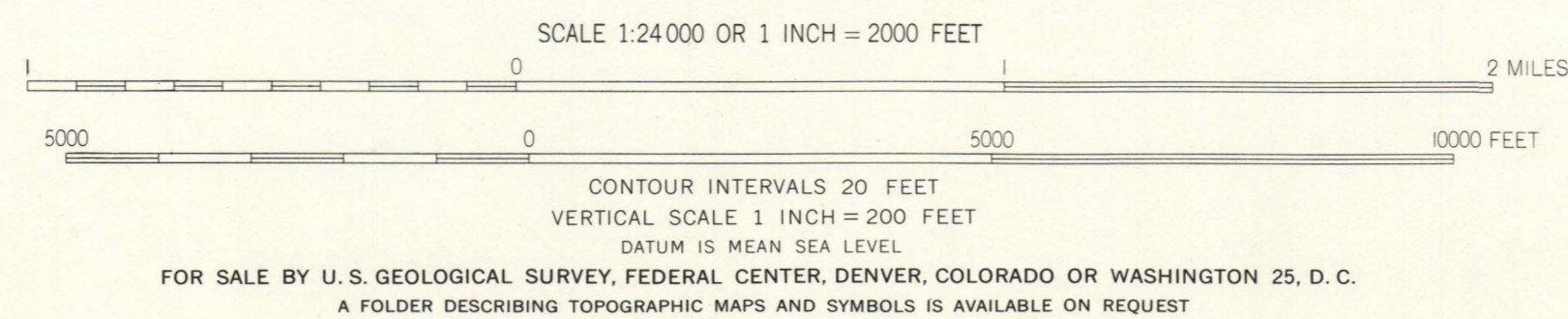
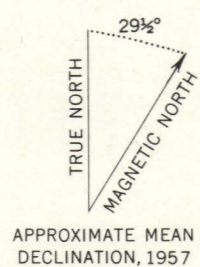
	Datum is lower low water Feet	Datum is mean sea level Feet
Highest tide (estimated)	18.5	11.10
Mean higher high water	14.10	6.70
Mean high water	13.20	5.80
Half tide level	7.40	0.00
Mean low water	1.60	-5.80
Mean lower low water	0.00	-7.40
Lowest tide (estimated)	-4.5	-11.90



NOTE: TOPOGRAPHY SHOWN BY DASHED LINES ENLARGED FROM SITKA (A-3) QUADRANGLE, ALASKA. FIGURES WITHIN LAKE ARE BOTTOM ELEVATIONS. STREAM COVERED BY ROCK DEBRIS FROM LAKE OUTLET DOWNSTREAM TO POND.



Mapped, edited, and published by the Geological Survey
Control by USGS and USC&GS
Topography from aerial photographs by multiplex methods 1954 and planetable surveys in 1957
Aerial photographs taken in 1948
Subject to adjustment
All crosses (X) are planetable bench marks



FOR SALE BY U.S. GEOLOGICAL SURVEY, FEDERAL CENTER, DENVER, COLORADO OR WASHINGTON 25, D. C.
A FOLDER DESCRIBING TOPOGRAPHIC MAPS AND SYMBOLS IS AVAILABLE ON REQUEST

INTERIOR GEOLOGICAL SURVEY, WASHINGTON 25, D. C. 1959 N. S. 48 0024

1 plan sheet showing profile and dam site

~~FILE COPY~~
~~NOT TO BE REMOVED FROM~~
~~FEDERAL BUILDING~~
~~TACOMA, WASHINGTON~~

KASNYKU LAKE
ALASKA
1957
ONE SHEET