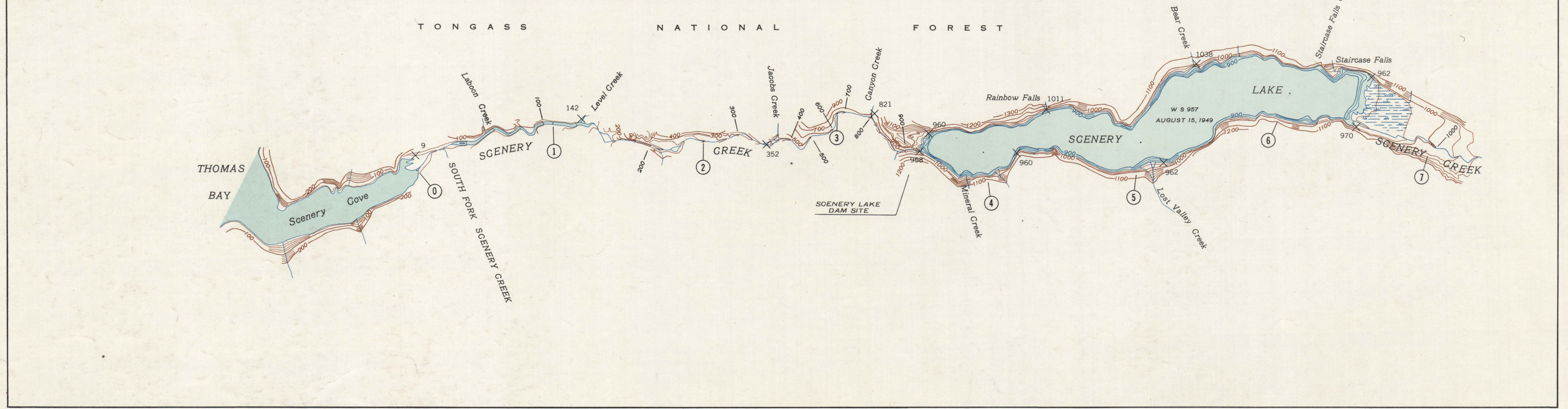
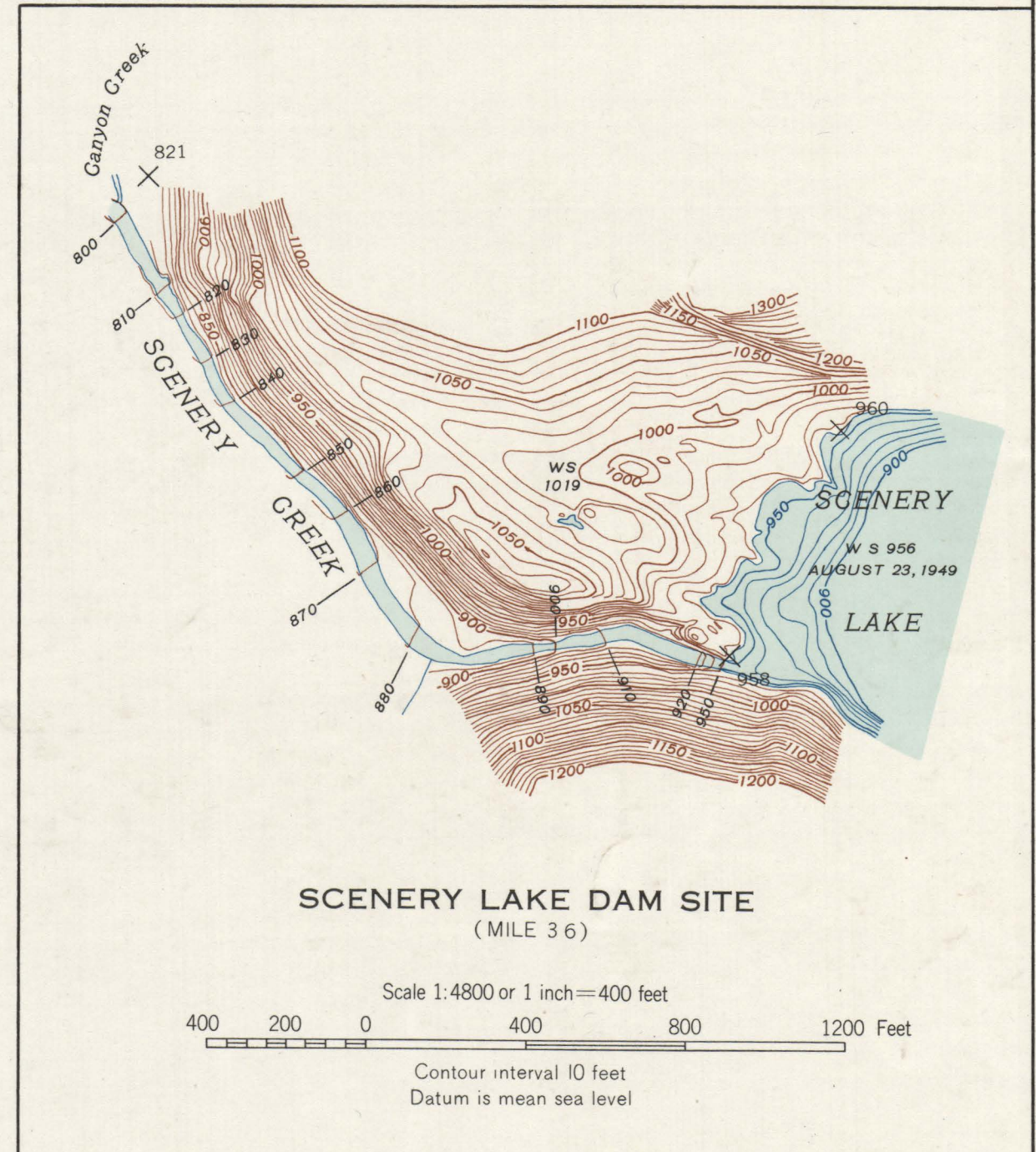
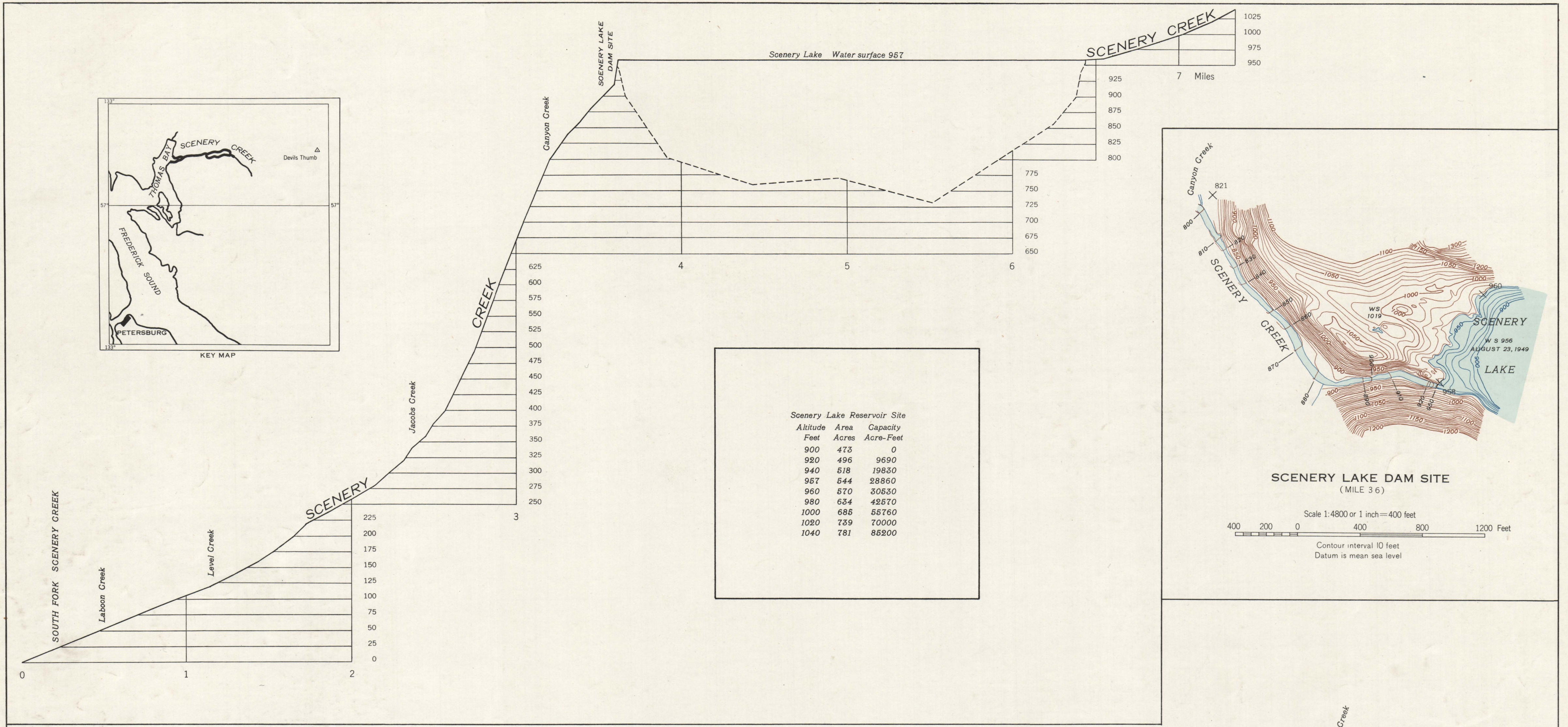
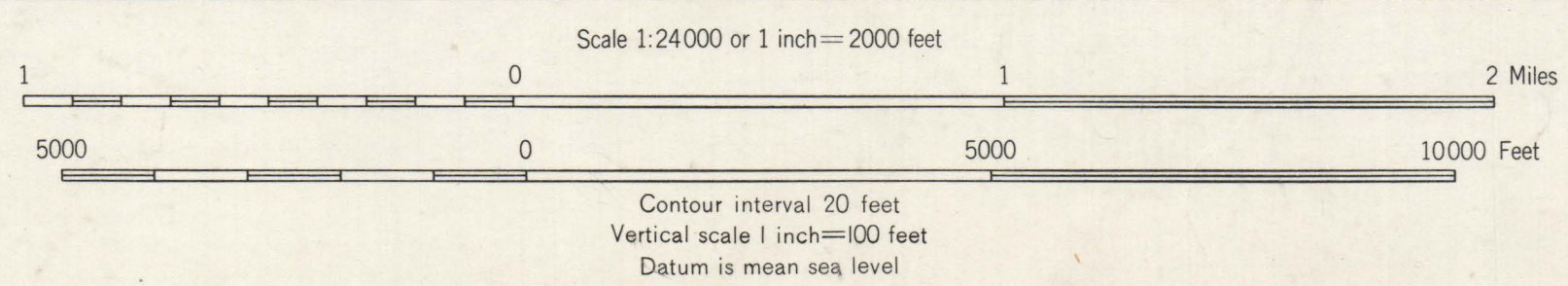
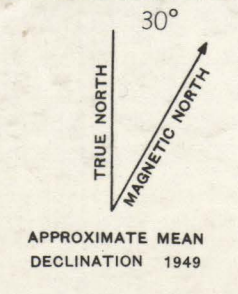


extra



Topography by F. F. Lawrence and J. L. Colbert  
Surveyed in 1949



Subject to adjustment  
All crosses (X) are plane table bench marks

One sheet with dam site and profile

**FILE COPY**  
NOT TO BE REMOVED FROM  
FEDERAL BUILDING  
TACOMA, WASHINGTON

SCENERY CREEK,  
ALASKA  
Printed in 1954  
ONE SHEET