



LOCATION MAP

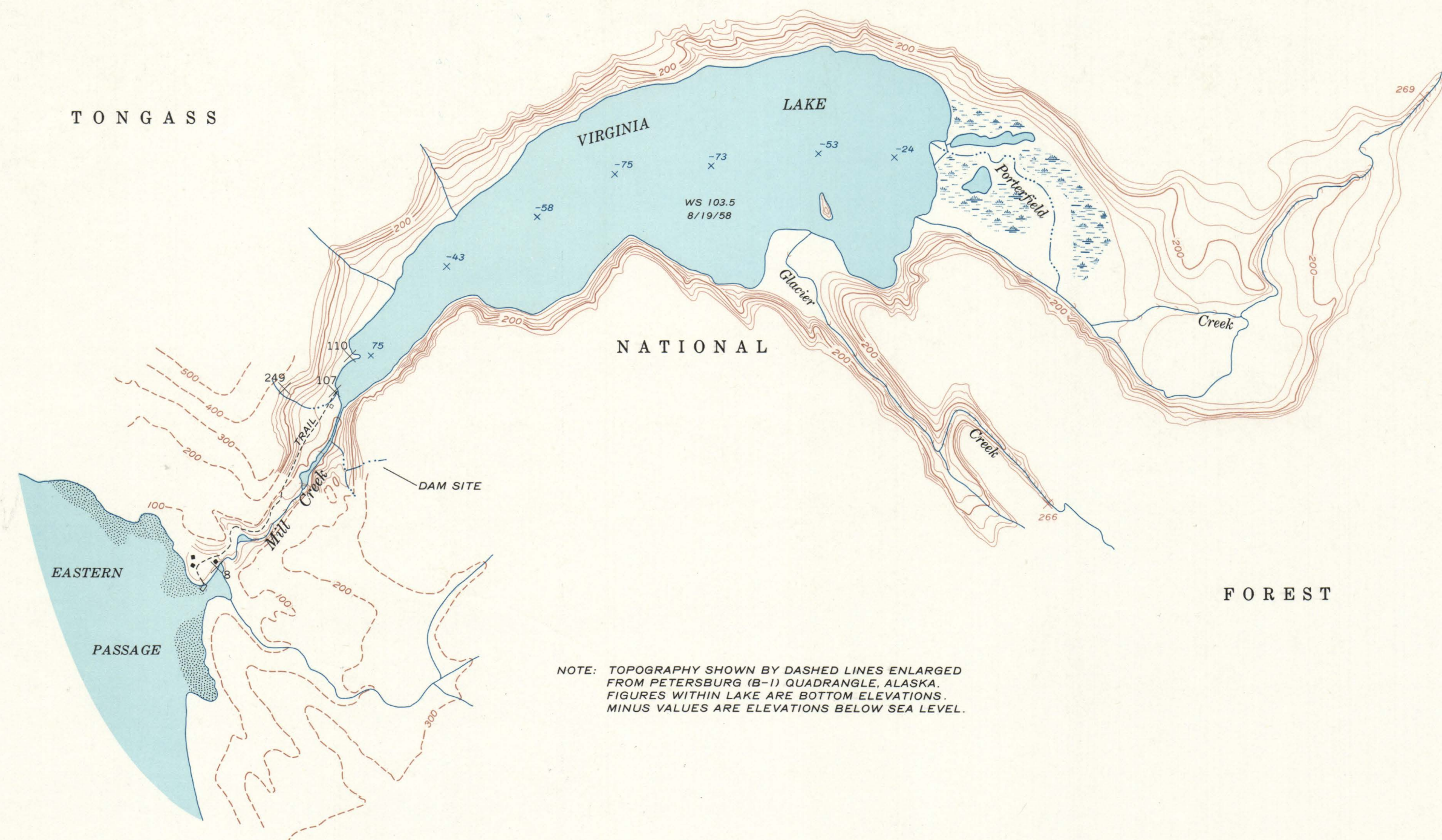
APPROXIMATE TIDE PLANES WRANGELL, ALASKA

	Datum is lower low water Feet	Datum is mean sea level Feet
Highest tide (estimated)	21.50	13.10
Mean higher high water	16.10	7.75
Mean high water	15.20	6.85
Half tide level	8.35	0.00
Mean low water	1.50	-6.85
Mean lower low water	0.00	-8.35
Lowest tide (estimated)	-4.50	-12.85

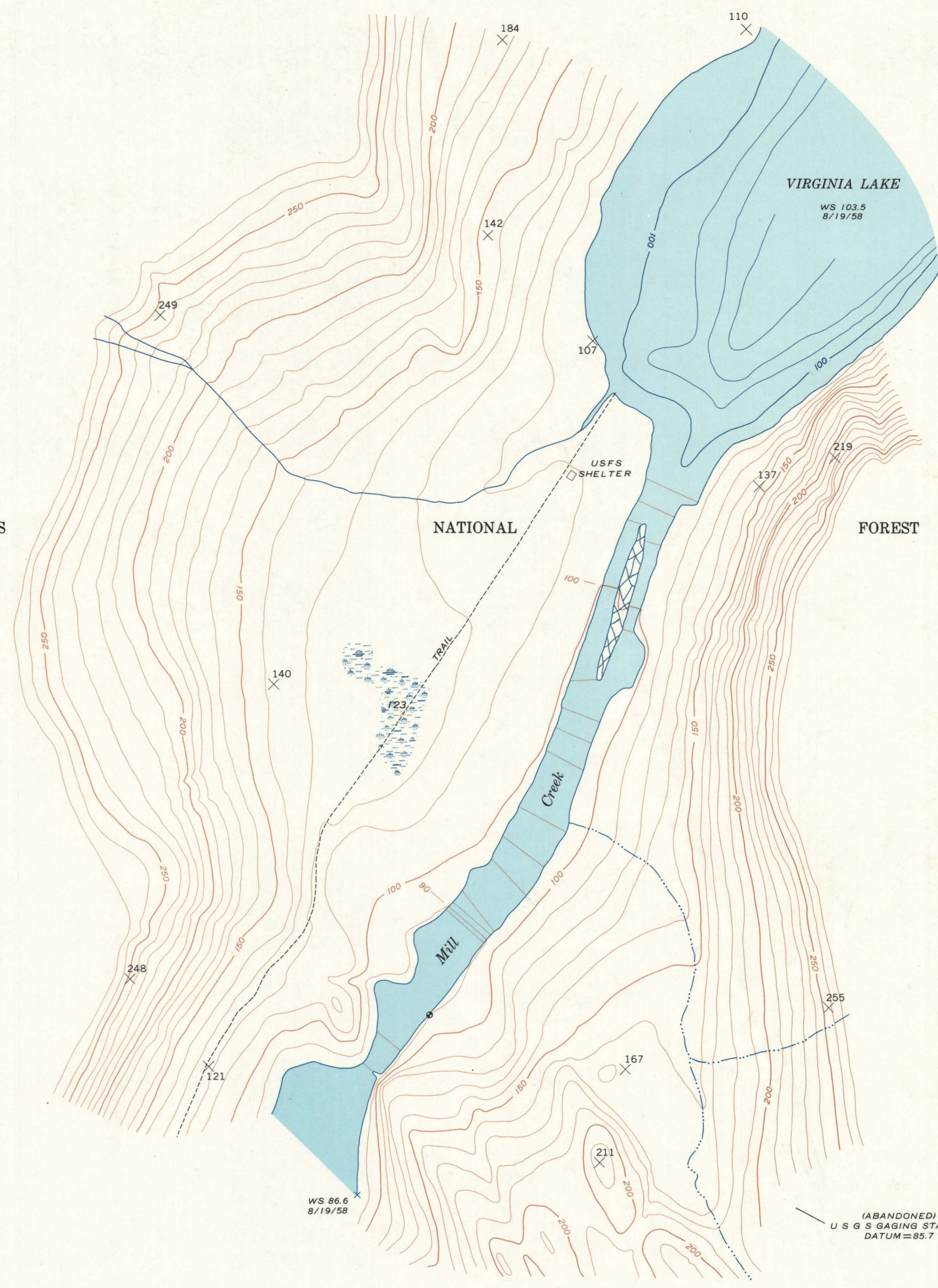
VIRGINIA LAKE RESERVOIR SITE, ALASKA

Altitude (feet)	Area (acres)	Capacity (acre-feet)
104	634	0
120	902	12,300
140	999	31,300
160	1,160	52,900
180	1,260	77,200
200	1,380	104,000
220	1,500	132,000
240	1,630	164,000
260	1,740	197,000

¹Lake surface

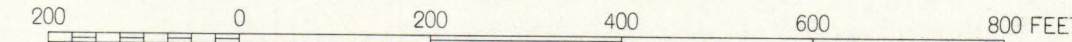


NOTE: TOPOGRAPHY SHOWN BY DASHED LINES ENLARGED FROM PETERSBURG (B-1) QUADRANGLE, ALASKA. FIGURES WITHIN LAKE ARE BOTTOM ELEVATIONS. MINUS VALUES ARE ELEVATIONS BELOW SEA LEVEL.



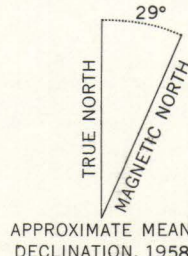
VIRGINIA LAKE DAM SITE

SCALE 1:2400 OR 1 INCH = 200 FEET

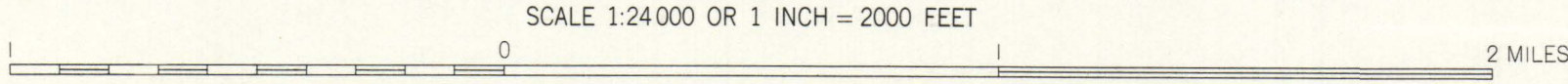


CONTOUR INTERVAL ON LAND 10 FEET
CONTOUR INTERVAL ON WATER SURFACE 1 FOOT

Mapped, edited, and published by the Geological Survey
Control by USGS and USC&GS
Topography from aerial photographs by multiplex methods 1956
and by planetable surveys 1958
Aerial photographs taken 1948
All crosses (X) are planetable bench marks
Subject to adjustment



APPROXIMATE MEAN DECLINATION, 1958



CONTOUR INTERVAL ON LAND 20 FEET
CONTOUR INTERVAL ON WATER SURFACE 5 FEET
DATUM IS MEAN SEA LEVEL

FOR SALE BY U. S. GEOLOGICAL SURVEY, DENVER 2, COLORADO OR WASHINGTON 25, D. C.
A FOLDER DESCRIBING TOPOGRAPHIC MAPS AND SYMBOLS IS AVAILABLE ON REQUEST

INTERIOR-GEOLOGICAL SURVEY, WASHINGTON, D. C. 1960-NS MR 1611

1 plan sheet showing dam sites

THIS COPY
NOT TO BE REMOVED FROM
FEDERAL BUILDING
TACOMA, WASHINGTON

VIRGINIA LAKE
ALASKA
1958
ONE SHEET