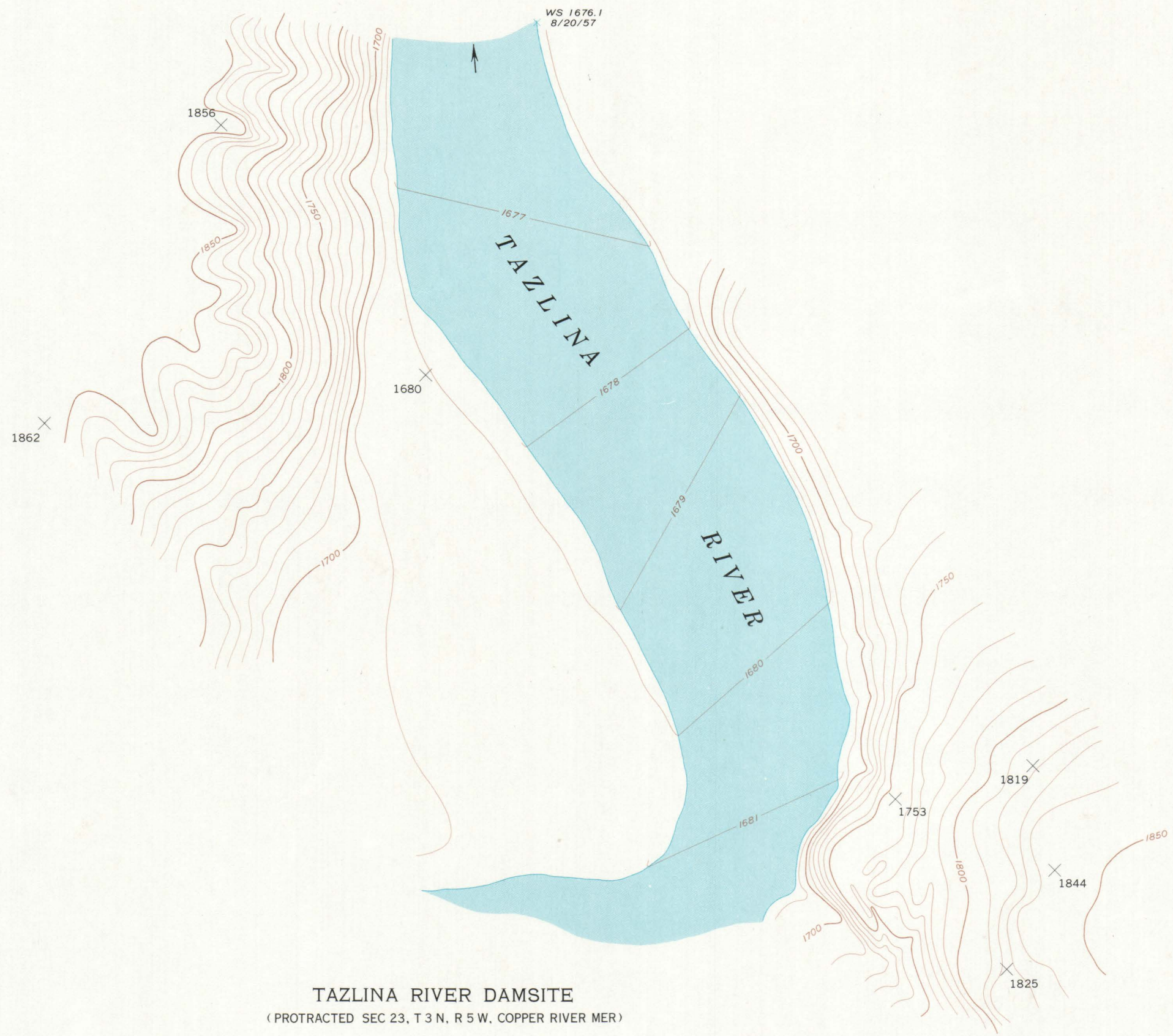


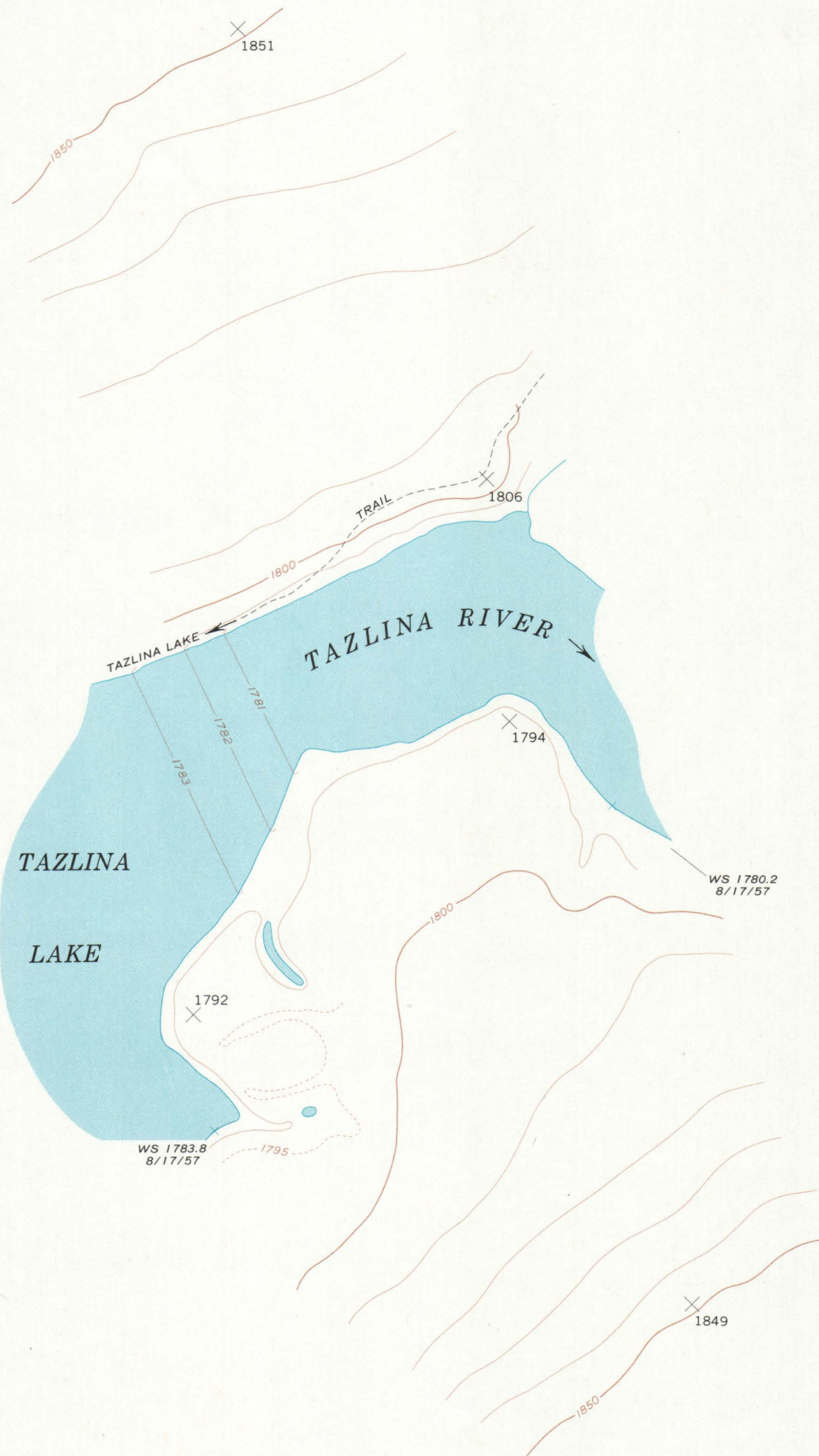
LOCATION MAP



TAZLINA RIVER DAMSITE  
(PROTRACTED SEC 23, T 3 N, R 5 W, COPPER RIVER MER)

SCALE 1:2400 OR 1 INCH = 200 FEET

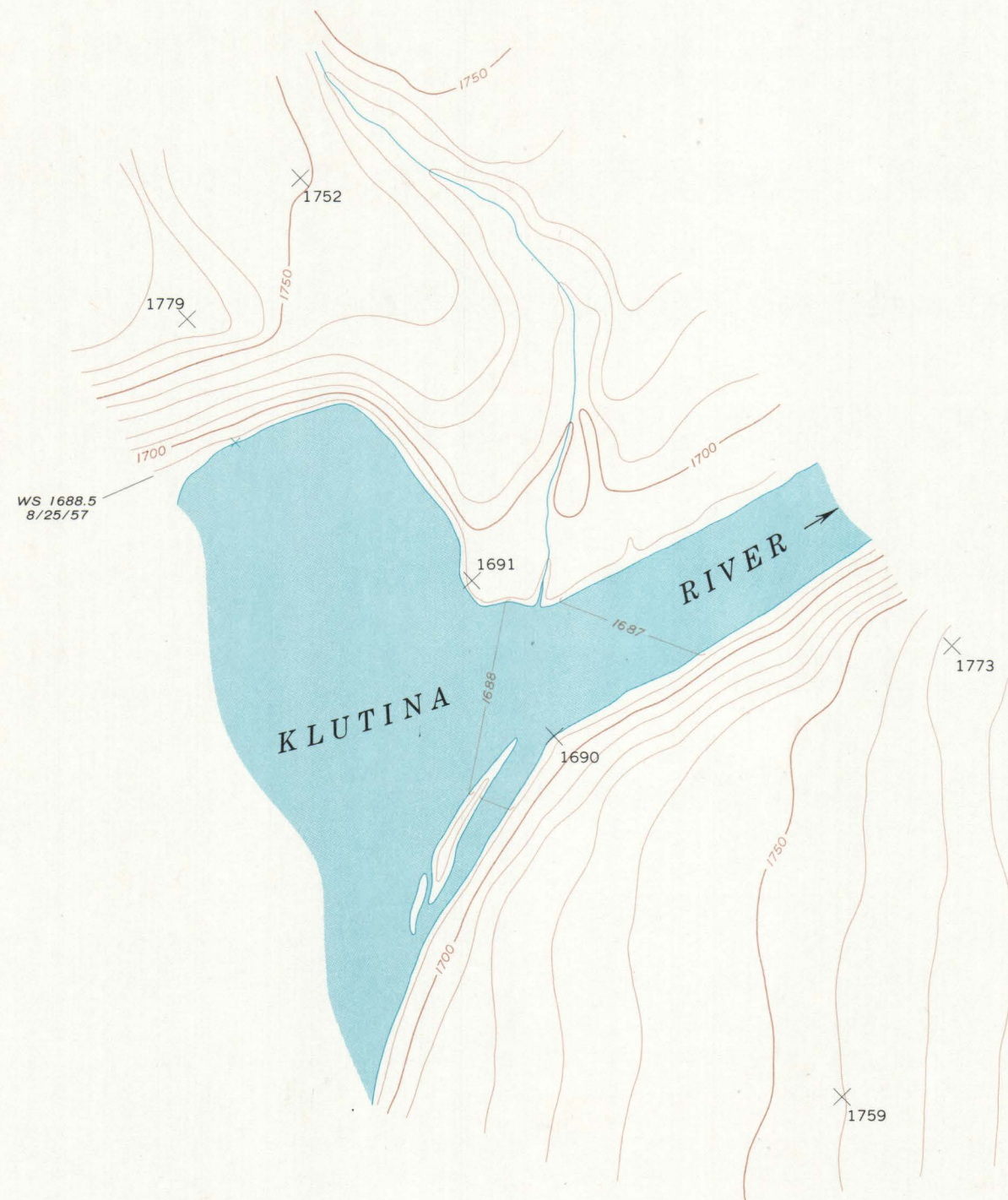
CONTOUR INTERVAL ON LAND 10 FEET  
CONTOUR INTERVAL ON RIVER SURFACE 1 FOOT  
DATUM IS MEAN SEA LEVEL



TAZLINA LAKE DAMSITE  
(PROTRACTED SEC 25, T 3 N, R 6 W, COPPER RIVER MER)

SCALE 1:4800 OR 1 INCH = 400 FEET

CONTOUR INTERVAL ON LAND 10 FEET  
CONTOUR INTERVAL ON RIVER SURFACE 1 FOOT  
DATUM IS MEAN SEA LEVEL

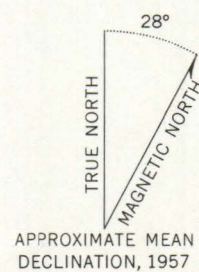


KLUTINA RIVER DAMSITE  
(PROTRACTED SEC 16, T 1 S, R 2 W, COPPER RIVER MER)

SCALE 1:2400 OR 1 INCH = 200 FEET

CONTOUR INTERVAL ON LAND 10 FEET  
CONTOUR INTERVAL ON RIVER SURFACE 1 FOOT  
DATUM IS MEAN SEA LEVEL

Mapped, edited, and published by the Geological Survey  
Control by USGS and USC&GS  
Topography by J. L. Colbert, 1957, using planetable methods  
All crosses (X) are planetable bench marks



FOR SALE BY U.S. GEOLOGICAL SURVEY  
FAIRBANKS, ALASKA 99701, DENVER, COLORADO 80225, OR WASHINGTON, D.C. 20242  
A FOLDER DESCRIBING TOPOGRAPHIC MAPS AND SYMBOLS IS AVAILABLE ON REQUEST

1 plan sheet  
showing damsites

TAZLINA RIVER  
AND  
KLUTINA RIVER  
ALASKA  
1957  
ONE SHEET