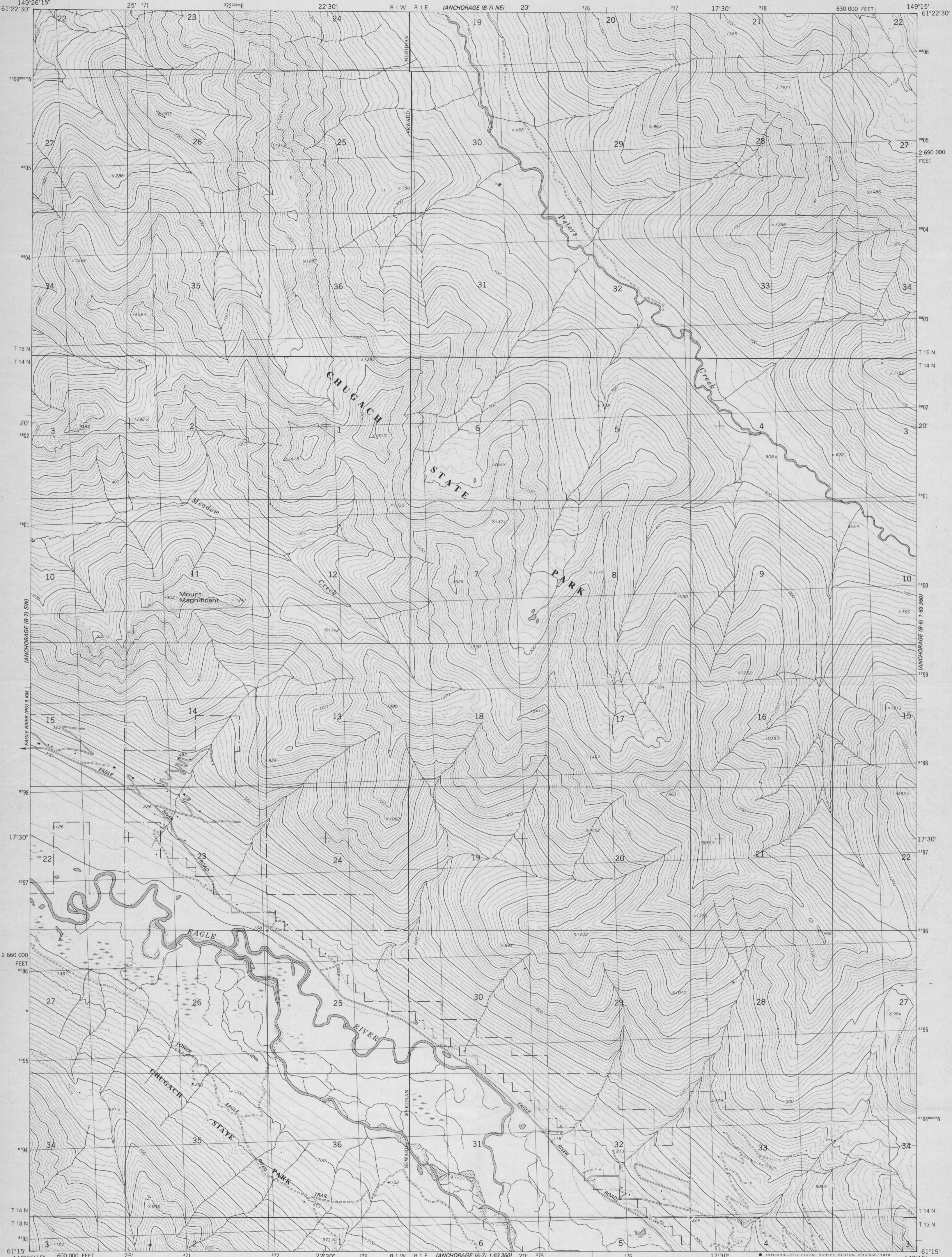


PAGE (B-7) NW QM



ADVANCE PROOF SUBJECT TO CORRECTION SCALE 1:25 000

ANCHORAGE (B-8) NE QM



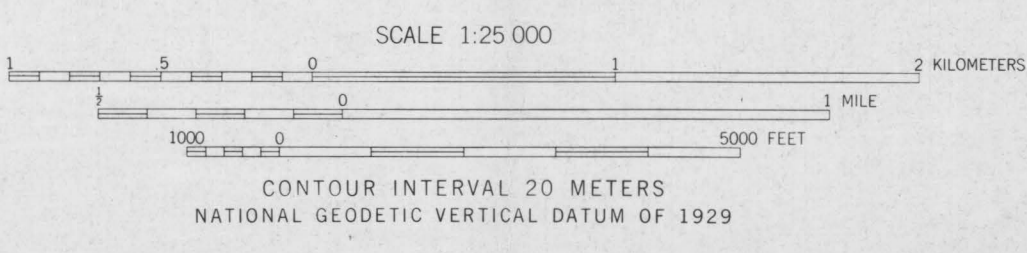
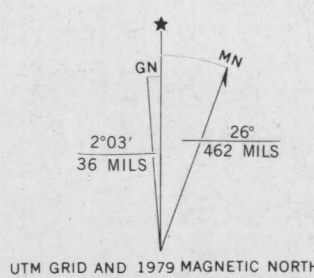
Mapped, edited, and published by the Geological Survey

Control by USGS and NOS/NOAA Topography by photogrammetric methods from aerial photographs taken 1972. Field checked 1973. Map edited 1979

Projection and 10,000-foot grid ticks: Alaska coordinate system, zone 4 (transverse Mercator) 1000-meter Universal Transverse Mercator grid, zone 6 1927 North American datum

Gray land lines represent unsurveyed and unmarked locations predetermined by the Bureau of Land Management Folios S-13 and S-14, Seward Meridian

There may be private inholdings within the boundaries of the National or State reservations shown on this map



ROAD CLASSIFICATION table with symbols for Primary highway, Secondary highway, Interstate Route, U.S. Route, and State Route.



THIS MAP COMPLIES WITH NATIONAL MAP ACCURACY STANDARDS FOR SALE BY U.S. GEOLOGICAL SURVEY FAIRBANKS, ALASKA 99701, DENVER, COLORADO 80225, OR RESTON, VIRGINIA 22092 A FOLDER DESCRIBING TOPOGRAPHIC MAPS AND SYMBOLS IS AVAILABLE ON REQUEST

ANCHORAGE (B-7) SE, ALASKA SE/4 ANCHORAGE (B-7) 1:63 360 SCALE QUADRANGLE N6115-W14915/7.5x11.25

Vertical text on the right edge: Anchorage (B-7) SE, Alaska Photo. Date: 11-12-73. Scale: 1:25,000. Map: 1979.