

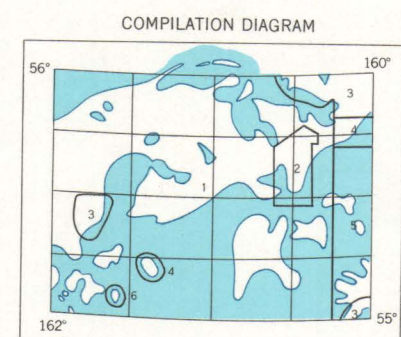


MAPPED BY THE GEOLOGICAL SURVEY AND U. S. COAST AND GEODETIC SURVEY  
EDITED AND PUBLISHED BY THE GEOLOGICAL SURVEY

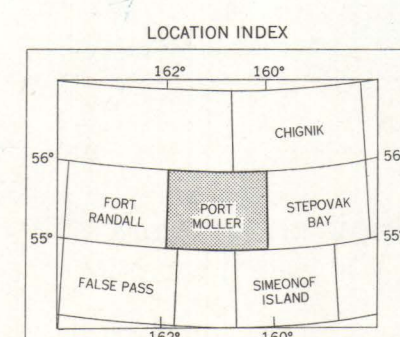
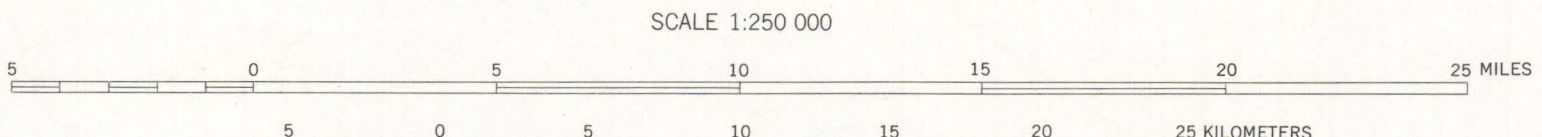
CONTROL BY USCGS  
HYDROGRAPHY COMPILED FROM USCGS CHARTS 8700 (1:100,000 SCALE), 8703, 8704 (1:80,000 SCALE), 8833 (1:79,798 SCALE), 8851 (1:40,000 SCALE), AND 8859 (1:300,000 SCALE)

COMPILED IN 1953 FROM ORIGINAL SURVEYS OF THE GEOLOGICAL SURVEY AND U. S. COAST AND GEODETIC SURVEY 1929-1952, SUPPLEMENTED BY STEREOPHOTOGRAMMETRIC (PHOTOLITH) COMPILATION 1943 AND 1946

UNIVERSAL TRANSVERSE MERCATOR PROJECTION, ZONE 4  
1927 NORTH AMERICAN DATUM



1. TOPOGRAPHY FROM ALASKA MAP PROJECT DISTRICT 1 (1:250,000)
2. TOPOGRAPHY FROM USCGS TOPOGRAPHIC MANUSCRIPTS 71-8827 AND 71-8831 (1:200,000)
3. TOPOGRAPHY BY PHOTOGRAMMETRIC COMPILATION ADJUSTED TO THE PROCTOR BASE
4. TOPOGRAPHY FROM AIR RECONNAISSANCE CHART BELFORSKI (1938)
5. TOPOGRAPHY FROM USCGS CHART 8700
6. TOPOGRAPHY FROM USCGS CHART 8704



ROAD CLASSIFICATION

ALL WEATHER ROADS	DRY WEATHER ROADS
HARD SURFACE	NONE IMPROVED DIRT
OTHER	NONE UNIMPROVED DIRT
	TRAILS

PORT MOLLER, ALASKA  
N5500-W16000/60X120  
1953

FOR SALE BY U. S. GEOLOGICAL SURVEY, FEDERAL CENTER, DENVER, COLORADO OR WASHINGTON 25, D. C.  
A FOLDER DESCRIBING TOPOGRAPHIC MAPS AND SYMBOLS IS AVAILABLE ON REQUEST