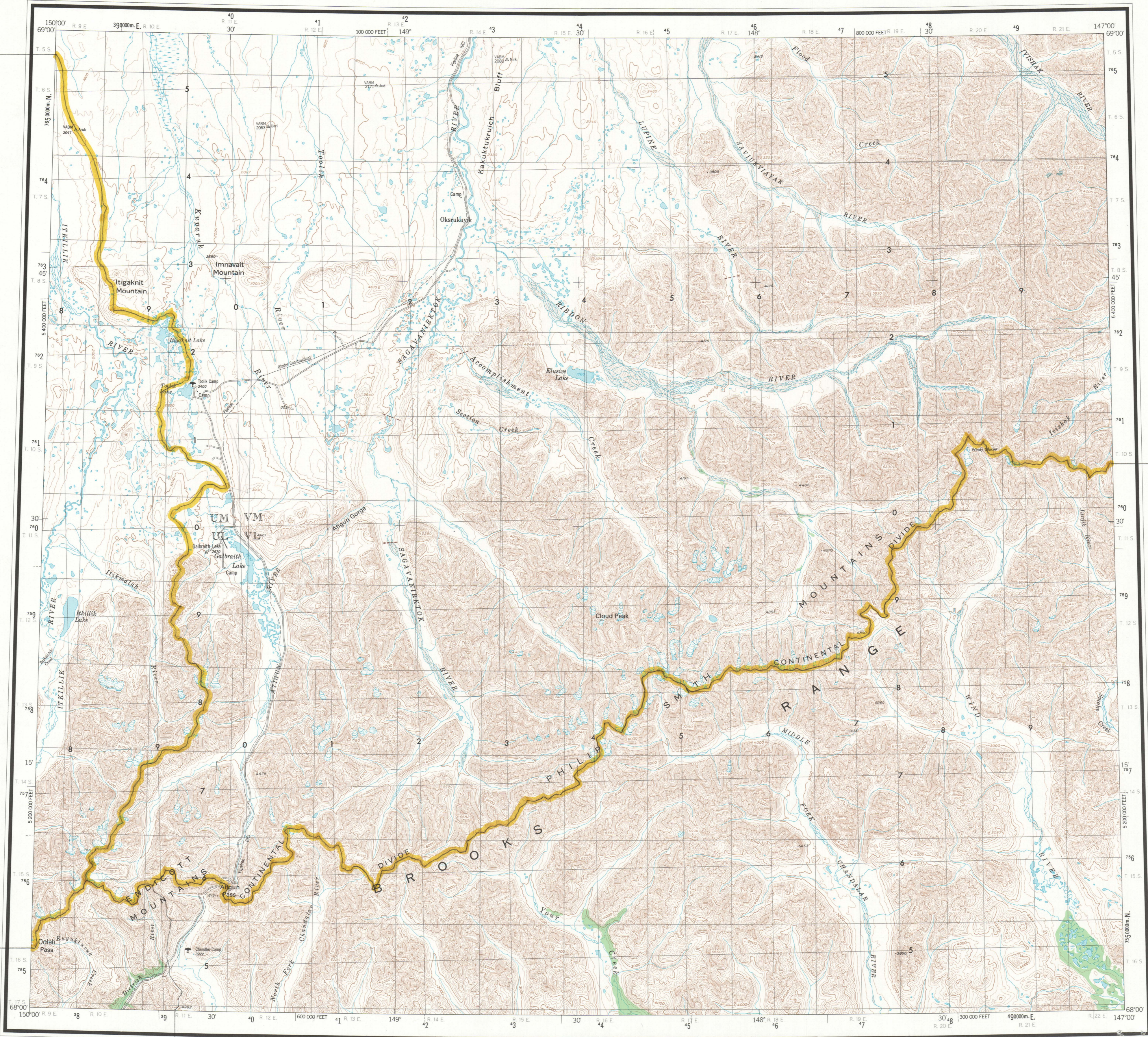


HYDROLOGIC UNIT
19010001

HYDROLOGIC UNIT
19010002



HYDROLOGIC UNIT
19010001

HYDROLOGIC UNIT
19030002

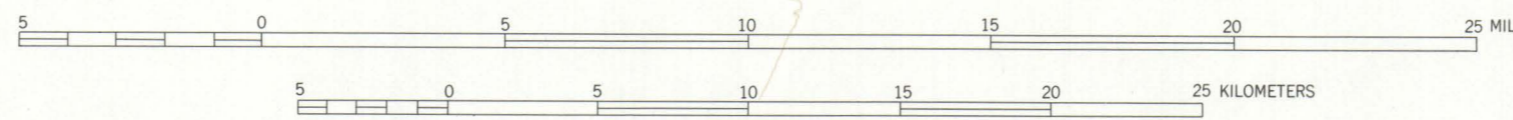
HYDROLOGIC UNIT
19010002

HYDROLOGIC UNIT
19030005

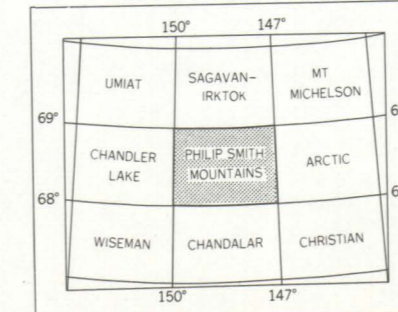
MAPPED, EDITED, AND PUBLISHED BY THE GEOLOGICAL SURVEY
 Control by USGS, NOS, and DMATC
 Compiled in 1956 by the U. S. Geological Survey by photogrammetric method from aerial photographs taken 1955. Field annotated 1956. Map not field checked. Revised in 1976 by the U. S. Geological Survey from aerial photographs taken 1975
 Universal Transverse Mercator Projection
 1927 North American datum
 100,000-foot grid based on Alaska coordinate system, zones 4 and 3
 Gray land lines represent unsurveyed and unmarked locations predetermined by the Bureau of Land Management Forms F-6, F-9, and F-10, Fairbanks Meridian

HYDROLOGIC UNIT
19030002

SCALE 1:250000



LOCATION DIAGRAM



ROAD CLASSIFICATION
Unimproved dirt ----- Light-duty

PHILIP SMITH MOUNTAINS, ALASKA
1956
REVISED 1976

CONTOUR INTERVAL 200 FEET
 NATIONAL GEODETIC VERTICAL DATUM OF 1929
 BLACK NUMBERED LINES INDICATE THE 10,000-METER UNIVERSAL TRANSVERSE MERCATOR GRID, ZONE 6
 1975 MAGNETIC DECLINATION FROM TRUE NORTH VARIES FROM 28°15' 00" WEST TO 31° 00' 00" EAST FOR THE CENTER OF THE WEST EDGE TO 31° 00' 00" EAST FOR THE CENTER OF THE EAST EDGE
 FOR SALE BY U. S. GEOLOGICAL SURVEY, FAIRBANKS, ALASKA 99701,
 DENVER, COLORADO 80225, OR RESTON, VIRGINIA 22092