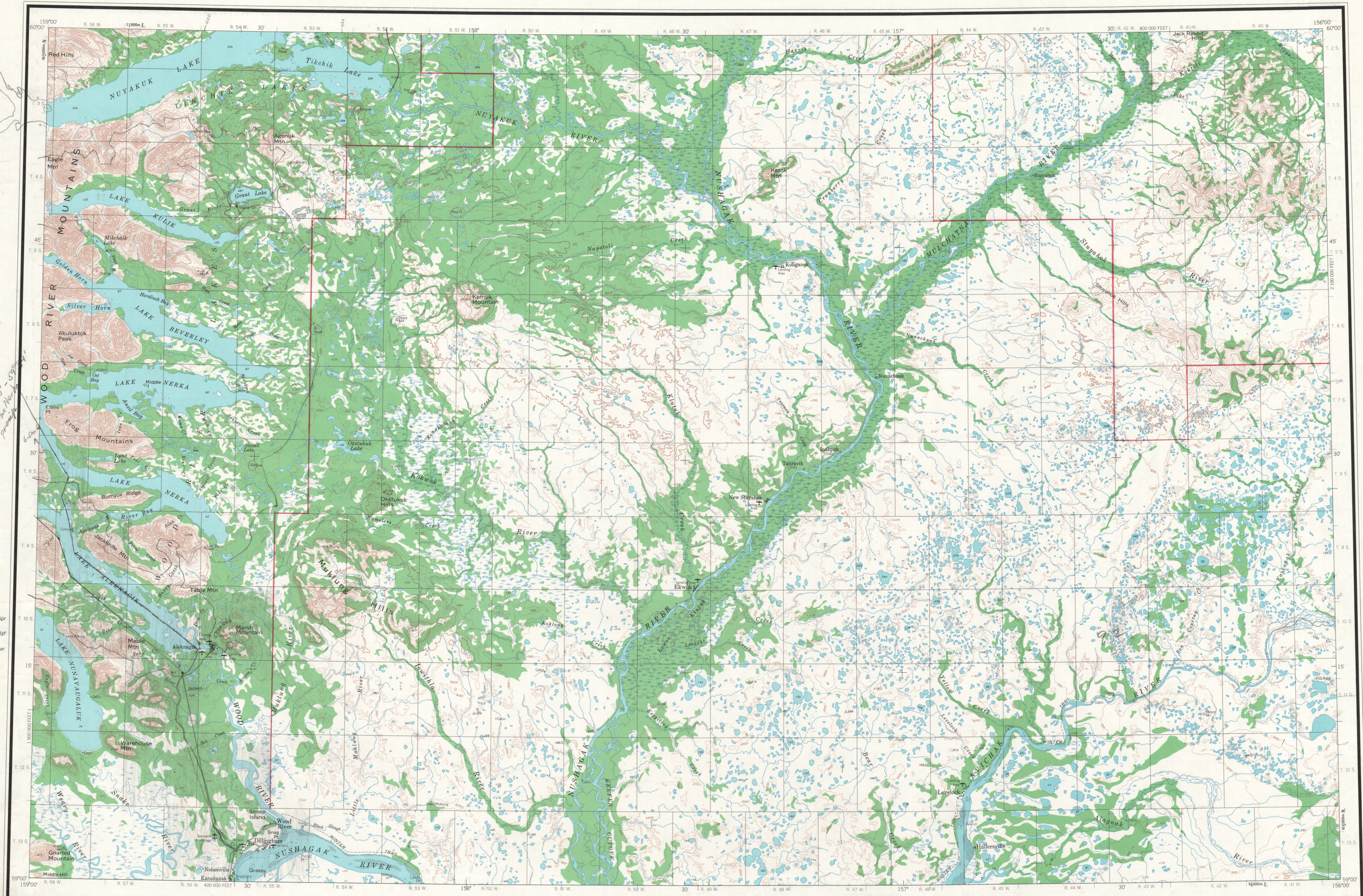


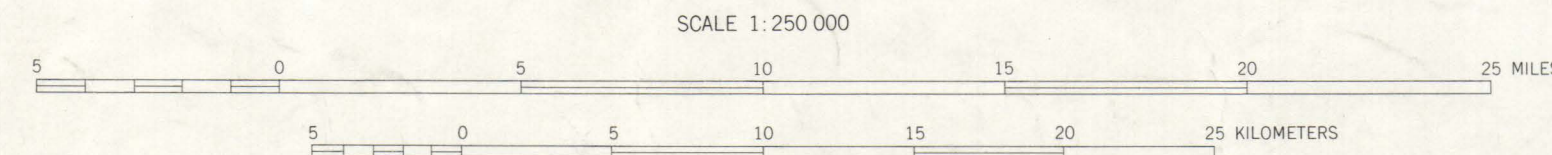
342
208
140
191

Lake Eliza
159008 - 508
Lake Noyah

410
-7
33
X
.068
X
1000
3344 KW
2000
4488 KW
30000
6732 KW

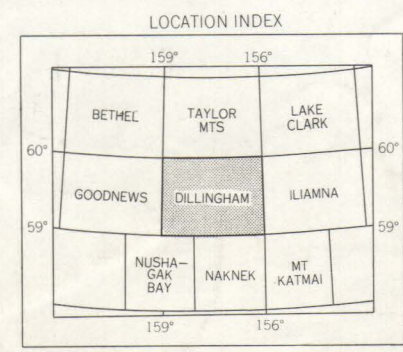


MAPPED, EDITED, AND PUBLISHED BY THE GEOLOGICAL SURVEY
CONTROL BY USGS, USCGS, AND USCE
COMPILED IN 1965 FROM U.S. GEOLOGICAL SURVEY 1:63,360 SCALE MAPS
AND ARMY MAP SERVICE 1:50,000 SCALE MAPS, SURVEYED 1952 AND 1954.
MAP NOT FIELD CHECKED
SELECTED HYDROGRAPHIC DATA COMPILED FROM USGS CHART 9052 (1965)
THIS INFORMATION IS NOT INTENDED FOR NAVIGATIONAL PURPOSES
UNIVERSAL TRANSVERSE MERCATOR PROJECTION. 1927 NORTH AMERICAN DATUM
100,000 FOOT GRID BASED ON ALASKA COORDINATE SYSTEM, ZONE 6
10,000 METER UNIVERSAL TRANSVERSE MERCATOR GRID TICKS,
ZONE 4, SHOWN IN BLUE
LAND LINES REPRESENT UNSURVEYED AND UNMARKED LOCATIONS
PREDETERMINED BY THE BUREAU OF LAND MANAGEMENT
FIGURES 18 AND 19, SEWARD MERIDIAN
LAKE ELEVATIONS ARE UNCHECKED



CONTOUR INTERVAL 100 FEET
DATUM IS MEAN SEA LEVEL
DEPTH CURVES AND SOUNDINGS IN FEET—DATUM IS MEAN LOWER LOW WATER
SHOULDER SHOWN REPRESENTS THE APPROXIMATE LINE OF MEAN HIGH WATER
1954 MAGNETIC DECLINATION AT SOUTH EDGE OF SHEET VARIES FROM 20°07' TO 21°30' EAST

THIS MAP IS AVAILABLE IN BOTH SHADED RELIEF AND CONTOUR EDITIONS
FOR SALE BY U.S. GEOLOGICAL SURVEY
FAIRBANKS, ALASKA, 99701, DENVER, COLORADO 80225, OR WASHINGTON, D.C. 20242
A FOLDER DESCRIBING TOPOGRAPHIC MAPS AND SYMBOLS IS AVAILABLE ON REQUEST



ROAD CLASSIFICATION
LIGHT DUTY UNIMPROVED DIRT =====

DILLINGHAM, ALASKA
N5900-W15600/60X180
1954