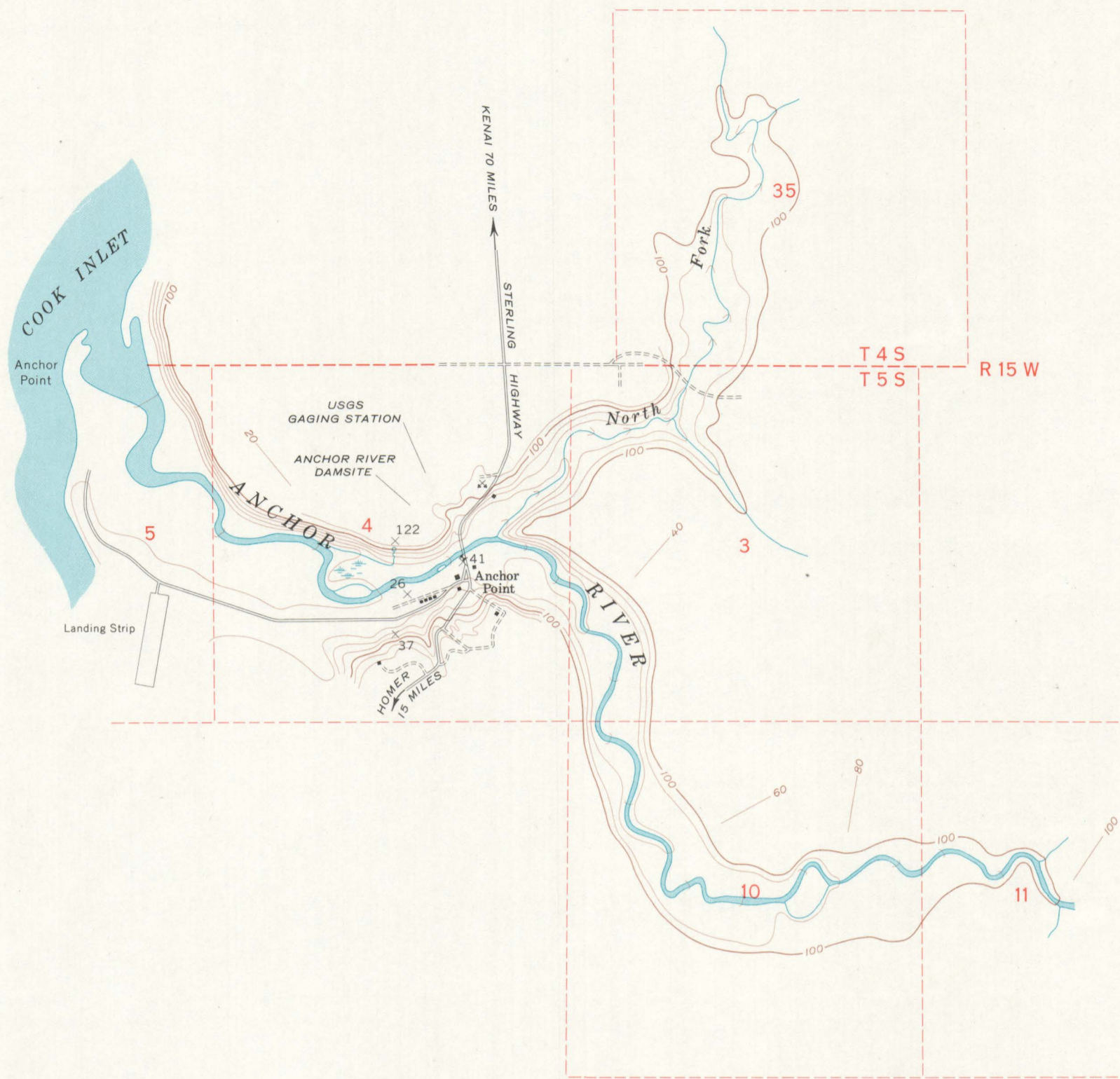
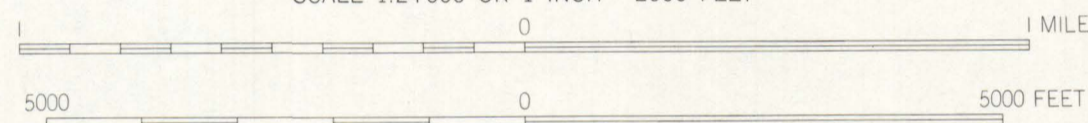


LOCATION MAP

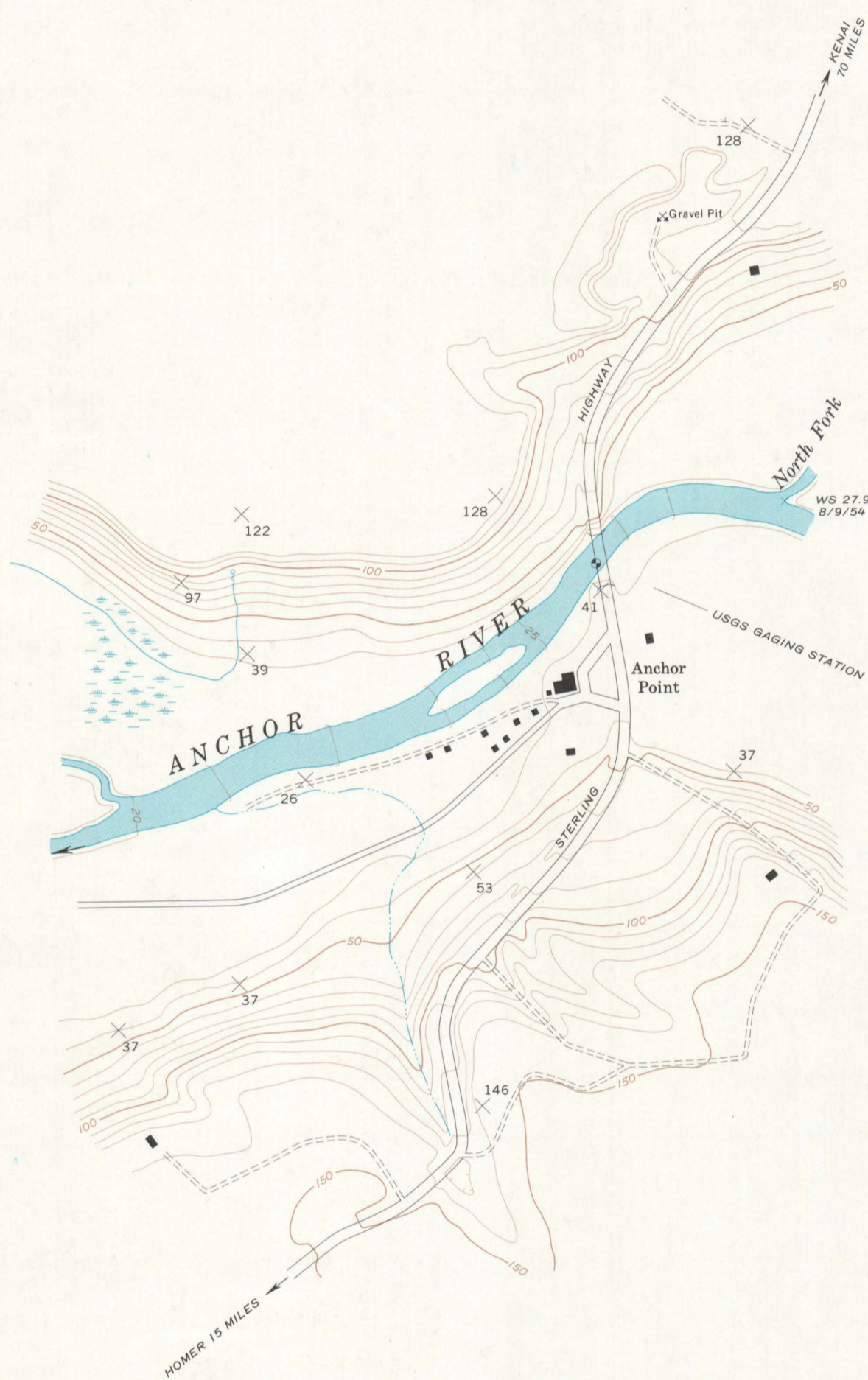


ANCHOR RIVER RESERVOIR SITE

SCALE 1:24000 OR 1 INCH = 2000 FEET

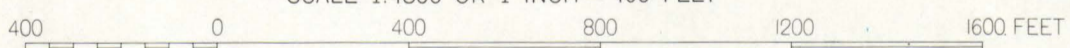


CONTOUR INTERVAL ON LAND 20 FEET
CONTOUR INTERVAL ON RIVER SURFACE 5 FEET
DATUM IS APPROXIMATE MEAN SEA LEVEL

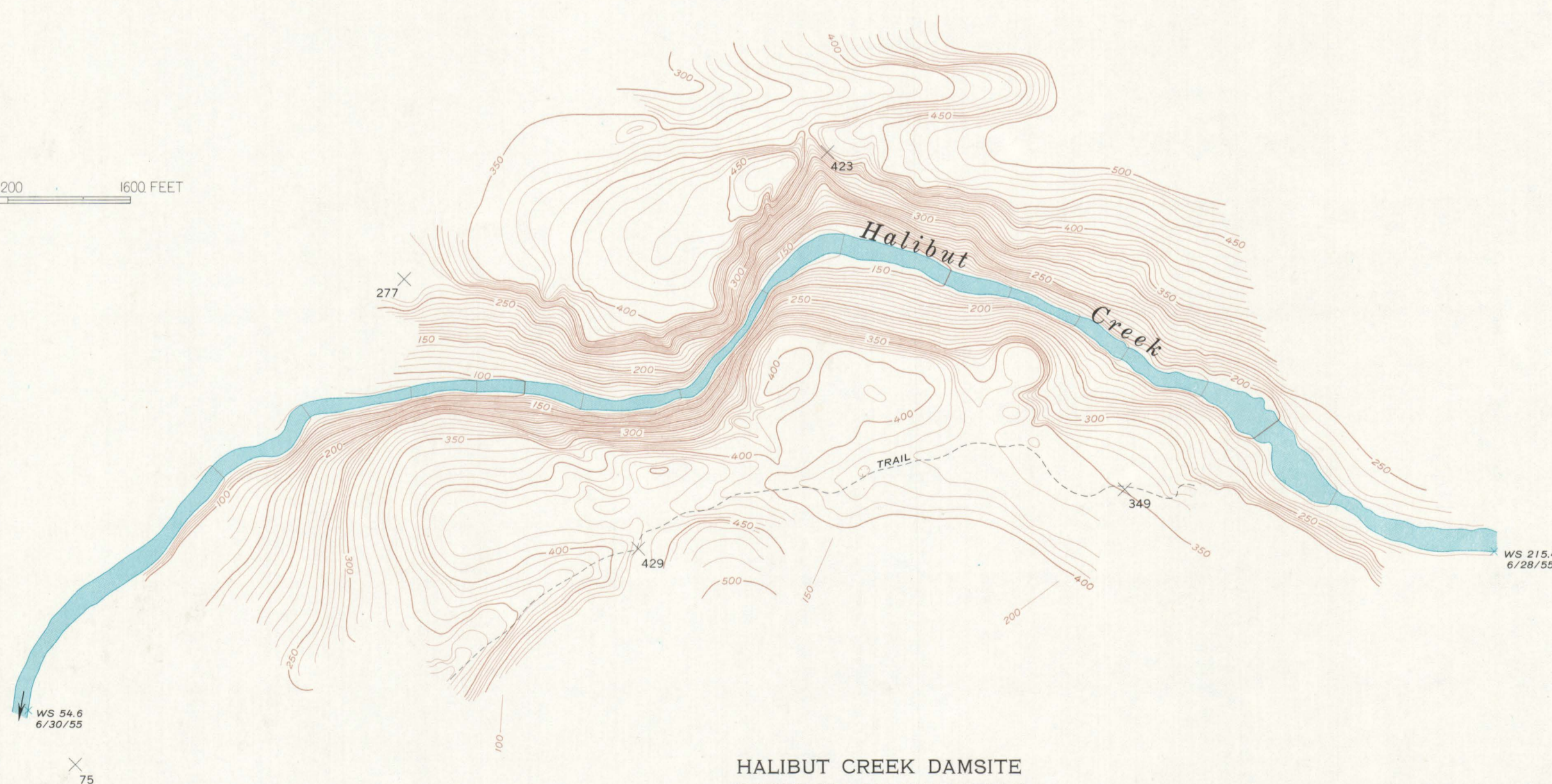


ANCHOR RIVER DAMSITE

SCALE 1:4800 OR 1 INCH = 400 FEET



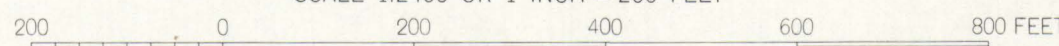
CONTOUR INTERVAL ON LAND 10 FEET
CONTOUR INTERVAL ON RIVER SURFACE 1 FOOT
DATUM IS MEAN SEA LEVEL



HALIBUT CREEK DAMSITE

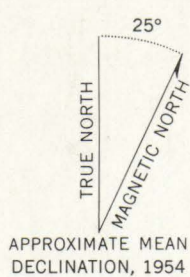
(PROTRACTED SEC 9, T 7 S, R 11 W, SEWARD MER)

SCALE 1:2400 OR 1 INCH = 200 FEET



CONTOUR INTERVAL ON LAND AND RIVER SURFACE 10 FEET
DATUM IS MEAN SEA LEVEL

Mapped, edited, and published by the Geological Survey
Control by USGS, USC&GS, and USCE
Topography by G. C. Giles, 1954, and J. L. Colbert, 1955,
using planimetric methods
All crosses (X) are planetable bench marks



APPROXIMATE MEAN
DECLINATION, 1954

FOR SALE BY U.S. GEOLOGICAL SURVEY
FAIRBANKS, ALASKA 99701, DENVER, COLORADO 80225, OR WASHINGTON, D.C. 20242
A FOLDER DESCRIBING TOPOGRAPHIC MAPS AND SYMBOLS IS AVAILABLE ON REQUEST

6	8	9	10	11	12
7	8	9	10	11	12
13	14	15	16	17	18
19	20	21	22	23	24
25	26	27	28	29	30
31	32	33	34	35	36

Dashed landlines indicate approximate location

1 plan sheet showing
dam and reservoir sites

ANCHOR RIVER
AND
HALIBUT CREEK
ALASKA
1955

ONE SHEET