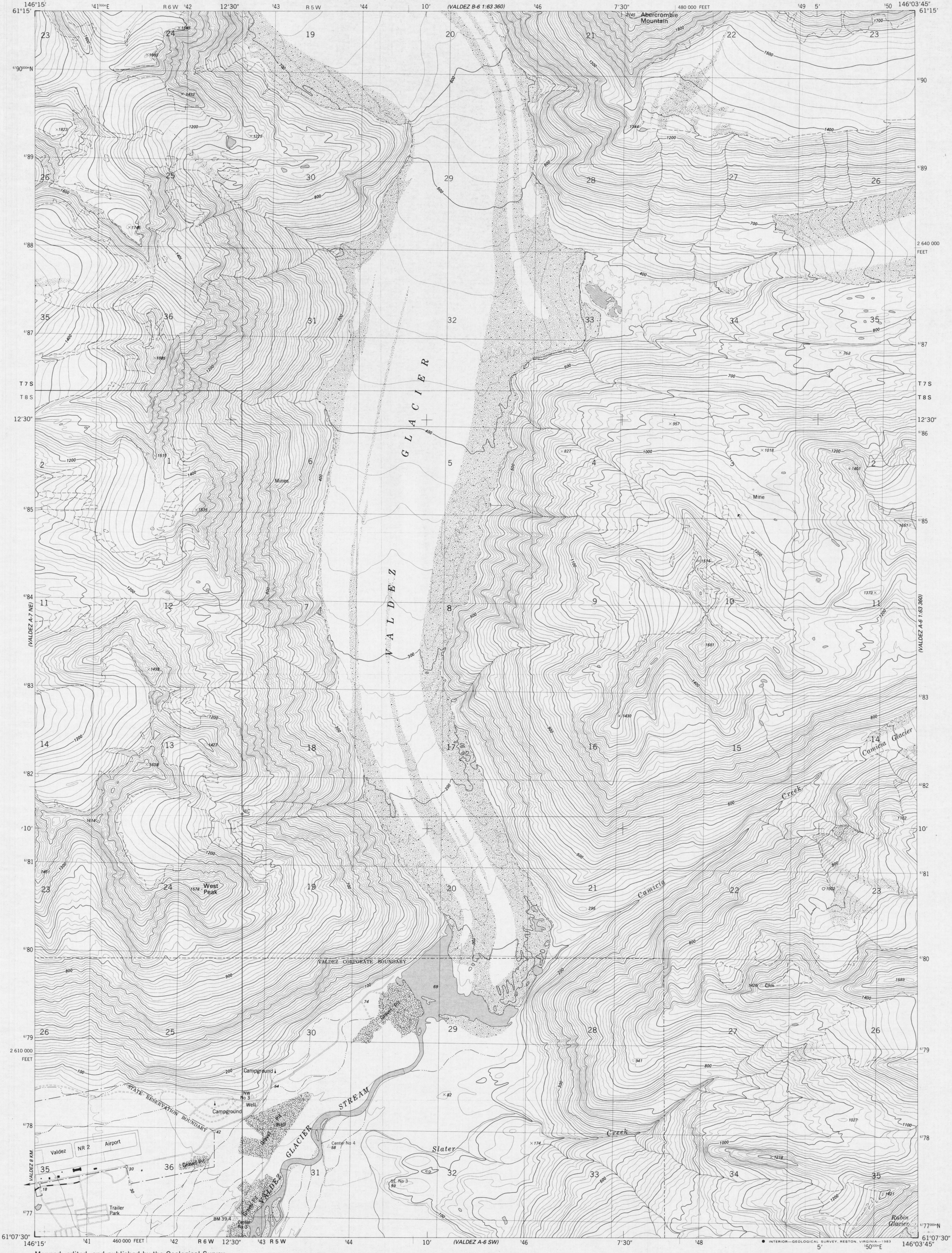


ADVANCE PROOF
SUBJECT TO CORRECTIONS
SCALE 1:25,000
F

UNITED STATES
DEPARTMENT OF THE INTERIOR
GEOLOGICAL SURVEY

VALDEZ (A-6) NW QUADRANGLE
ALASKA
1:25 000-SCALE SERIES (TOPOGRAPHIC)
NW4 VALDEZ (A-6) 1:63 360-SCALE QUADRANGLE

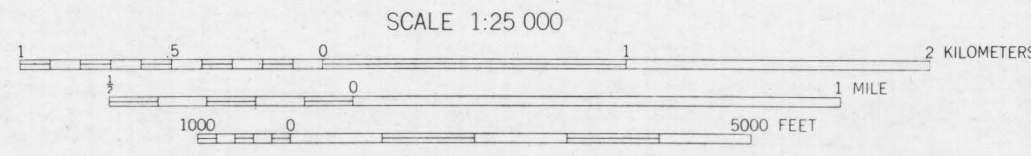
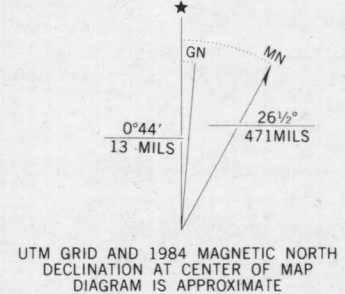


Mapped, edited, and published by the Geological Survey
Control by USGS and NOS/NOAA

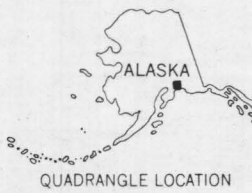
Topography by photogrammetric methods from aerial photographs
taken 1976. Field checked 1977. Map edited 1983

Projection and 1000-meter grid
Universal Transverse Mercator, zone 6
10,000-foot grid ticks based on Alaska coordinate
system, zone 3. 1927 North American datum
To place on the predicted North American Datum 1983
move the projection lines 60 meters north and
112 meters east as shown by dashed corner ticks

Gray land lines represent unsurveyed and unmarked locations
predetermined by the Bureau of Land Management
Folio CR-5, Copper River Meridian
There may be private inholdings within the boundaries of
the National or State reservations shown on this map



SCALE 1:25 000
CONTOUR INTERVAL 20 METERS
DOTTED LINES REPRESENT 10 METER CONTOURS
NATIONAL GEODETIC VERTICAL DATUM OF 1929
THIS MAP COMPLIES WITH NATIONAL MAP ACCURACY STANDARDS
FOR SALE BY U.S. GEOLOGICAL SURVEY
FAIRBANKS, ALASKA 99701, DENVER, COLORADO 80225, OR RESTON, VIRGINIA 22092
A FOLDER DESCRIBING TOPOGRAPHIC MAPS SYMBOLS IS AVAILABLE ON REQUEST



ROAD CLASSIFICATION

Primary highway, hard surface	Light-duty road, hard or improved surface
Secondary highway, hard surface	Unimproved road
	State Route

VALDEZ (A-6) NW, ALASKA
NW4 VALDEZ (A-6) 1:63 360-SCALE QUADRANGLE
N6107.5-W14603.75-5X11.5

1983

NOTE:

These proofs are sent for your review and comment. Please sign and return your marked copy within ten days using the enclosed self-addressed and stamped envelope. If no comments, both copies may be retained for your use.

Additional prints of this map are available at \$2.00 each from:
U. S. GEOLOGICAL SURVEY, MAIL STOP 510,
BOX 25046, FEDERAL CENTER, DENVER, COLO. 80225

SIGNATURE _____
ADDRESS _____
TITLE _____

Valdez (A-6) NW, AK
VALDEZ, AK
63% BI Black (Grey)