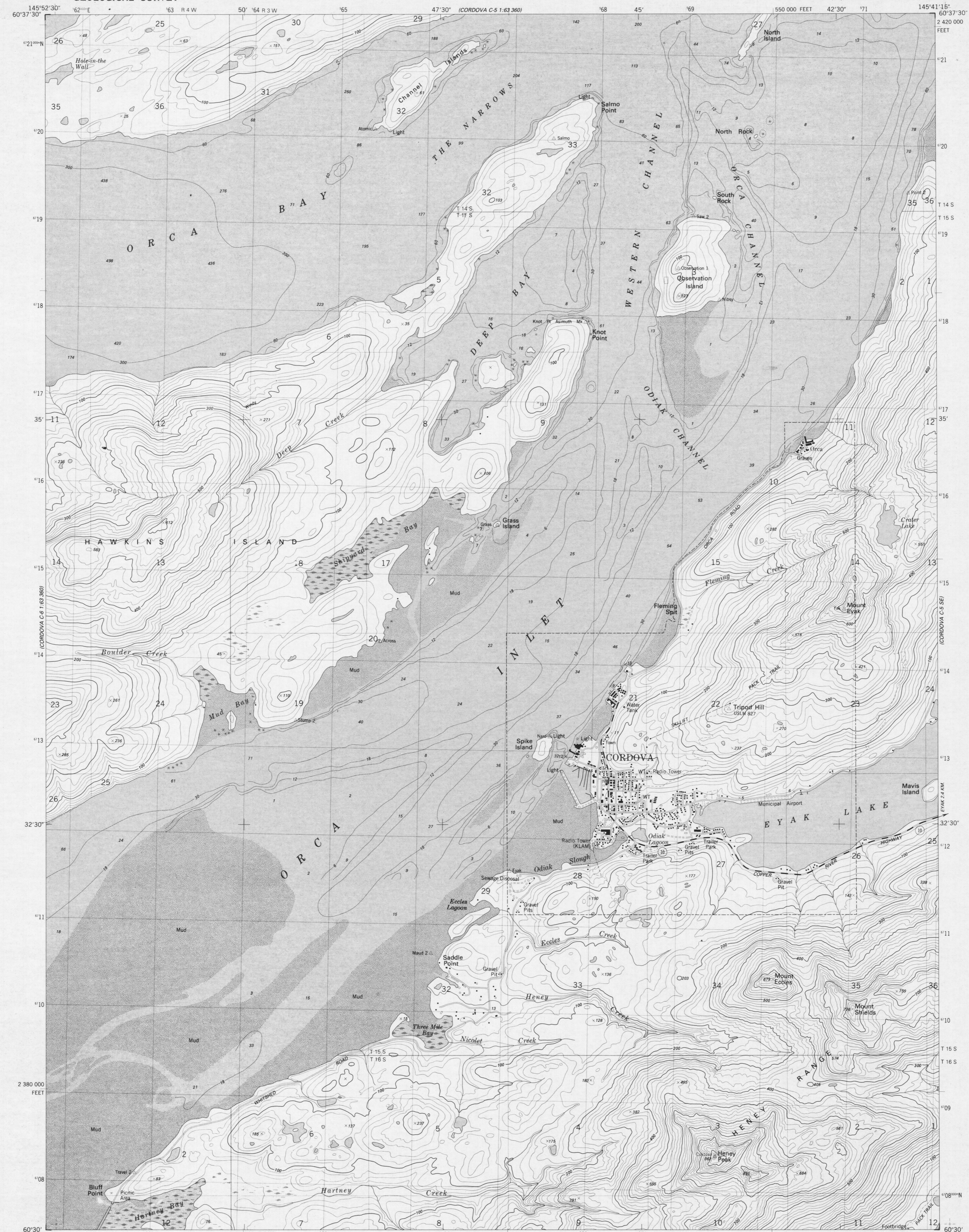
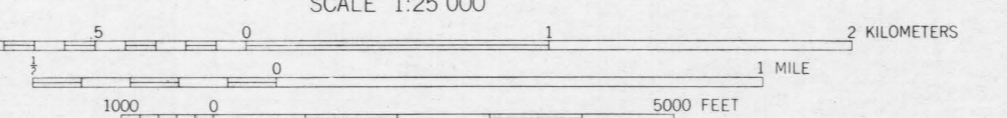
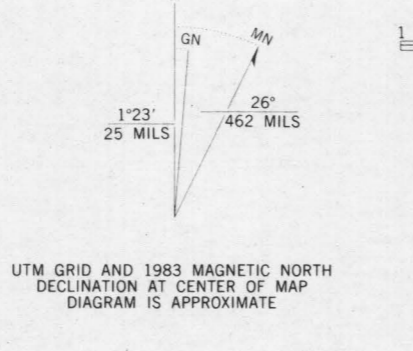


UNITED STATES
DEPARTMENT OF THE INTERIOR
GEOLOGICAL SURVEY

CORDOVA (C-5) SW QUADRANGLE
ALASKA
1:25 000-SCALE SERIES (TOPOGRAPHIC)
SW/4 CORDOVA (C-5) 1:63 360-SCALE QUADRANGLE



Mapped, edited, and published by the Geological Survey
Control by USGS and NOS/NOAA
Topography by photogrammetric methods from aerial photographs taken 1976. Field checked 1977. Map edited 1983
Selected hydrographic data compiled from NOS charts 16710 (1979), and 16709 (1980)
This information is not intended for navigational purposes
Projection and 1000-meter grid
Universal Transverse Mercator, zone 6
10,000-foot grid ticks based on Alaska coordinate system, zone 3. 1927 North American datum
To place on the predicted North American Datum 1983 move the projection lines 60 meters north and 112 meters east as shown by dashed corner ticks
Land lines represent unsurveyed and unmarked locations predetermined by the Bureau of Land Management Folio CR-5 Copper River Meridian
Swamps, as portrayed, indicate only the wetter areas usually of low relief, as interpreted from aerial photographs
Entire area lies within the Chugach National Forest, except Cordova exclusion area
There may be private inholdings within the boundaries of the National or State reservations shown on this map



SCALE 1:25 000
CONTOUR INTERVAL 20 METERS
NATIONAL GEODETIC VERTICAL DATUM OF 1929
DEPTH CURVES AND SOUNDINGS IN FEET-DATUM IS MEAN LOWER LOW WATER
SHORELINE SHOWN REPRESENTS THE APPROXIMATE LINE OF MEAN HIGH WATER
THE MEAN RANGE OF TIDE IS APPROXIMATELY 1.5 METERS

ROAD CLASSIFICATION

Primary highway, hard surface	Light-duty road, hard or improved surface
Secondary highway, hard surface	Unimproved road
	State Route

THIS MAP COMPLIES WITH NATIONAL MAP ACCURACY STANDARDS
FOR SALE BY U.S. GEOLOGICAL SURVEY
FAIRBANKS, ALASKA 99701, DENVER, COLORADO 80225, OR RESTON, VIRGINIA 22092
A FOLDER DESCRIBING TOPOGRAPHIC MAPS AND SYMBOLS IS AVAILABLE ON REQUEST

CORDOVA (C-5) SW, ALASKA
SW/4 CORDOVA (C-5) 1:63 360-SCALE QUADRANGLE
N6030-W14541.25V7.5X1.25
1983

CONTOURS AND ELEVATIONS IN METERS

NOTE:
These proofs are sent for your review and comment. Please sign and return your marked copy within ten days using the enclosed self-addressed and stamped envelope. If no comments, both copies may be retained for your use.
Additional prints of this map are available at \$2.00 each from:
U.S. GEOLOGICAL SURVEY, MAIL STOP 516
BOX 25046, FEDERAL CENTER, DENVER, COLO. 80225

SIGNATURE _____
ADDRESS _____
TITLE _____