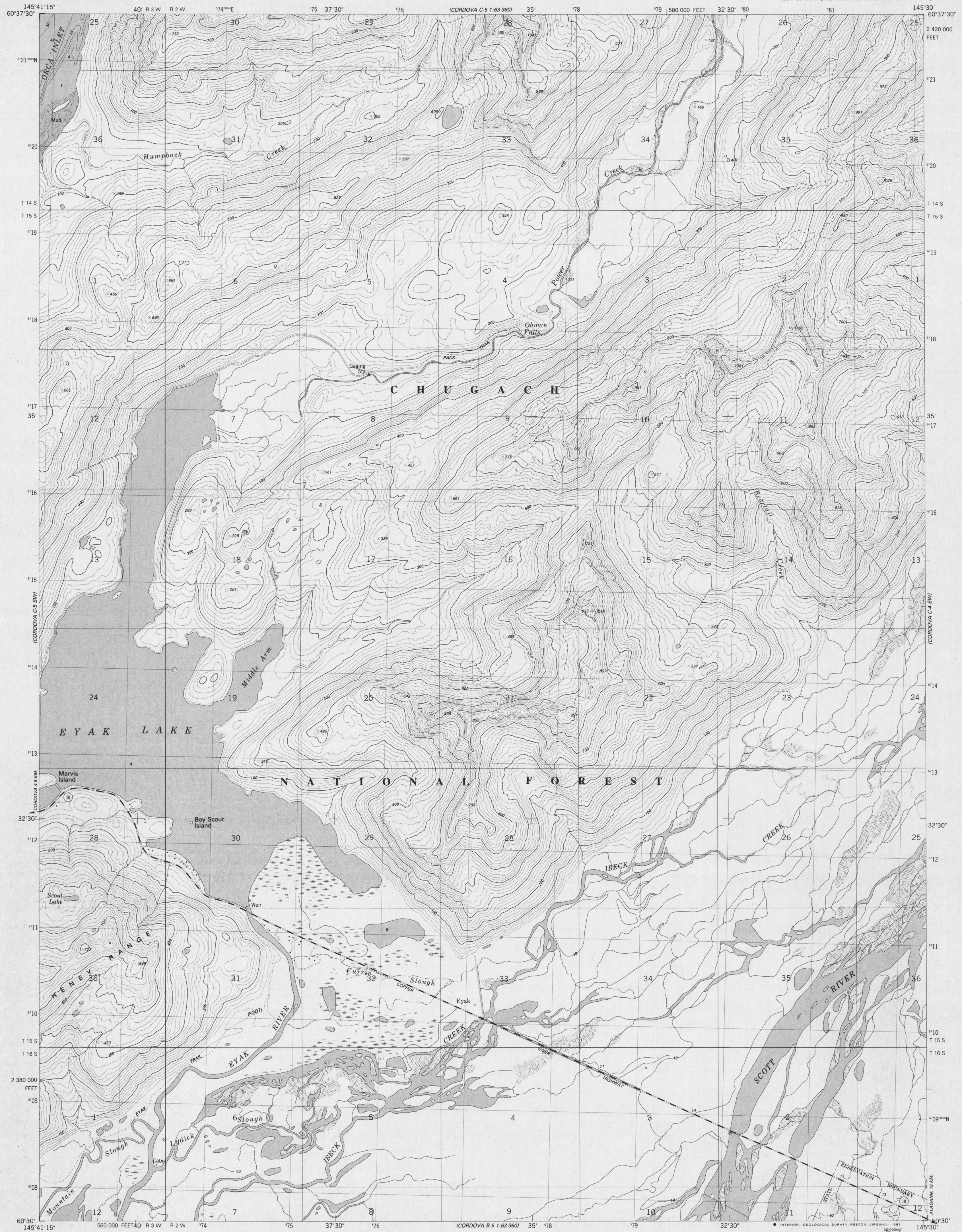


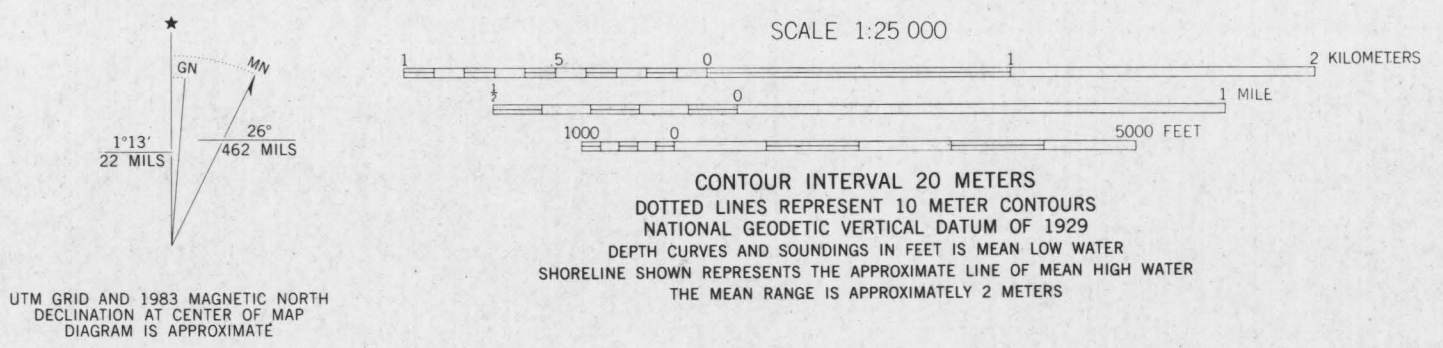
ADVANCE PROOF
SUBJECT TO
CORRECTIONS
SCALE
F

UNITED STATES
DEPARTMENT OF THE INTERIOR
GEOLOGICAL SURVEY

CORDOVA (C-5) SE QUADRANGLE
ALASKA
1:25 000-SCALE SERIES (TOPOGRAPHIC)
SE4 CORDOVA (C-5) 1:63 360-SCALE QUADRANGLE



Mapped, edited, and published by the Geological Survey
Control by USGS and NOS/NOAA
Topography by photogrammetric methods from aerial photographs taken 1976. Field checked 1977. Map edited 1983
Selected hydrographic data compiled from NOS chart 16710 (1979). This information is not intended for navigational purposes
Projection and 1000-meter grid
Universal Transverse Mercator, zone 6
10,000-foot grid ticks based on Alaska coordinate system, zone 3, 1927 North American datum
To place on the predicted North American Datum 1983 move the projection lines 60 meters north and 112 meters east
Land lines represent unsurveyed and unmarked locations predetermined by the Bureau of Land Management
Folio CR-5, Copper River Meridian
Swamps, as portrayed, indicate only the wetter areas, usually of low relief, as interpreted from aerial photographs
There may be private inholdings within the boundaries of the National or State reservations shown on this map



ROAD CLASSIFICATION

Primary highway, hard surface	Light-duty road, hard or improved surface
Secondary highway, hard surface	Unimproved road
	State Route



CORDOVA (C-5) SE, ALASKA
SE4 CORDOVA (C-5) 1:63 360-SCALE QUADRANGLE
N6030-W14530-7.5X11.25
1983

THIS MAP COMPLIES WITH NATIONAL MAP ACCURACY STANDARDS
FOR SALE BY U.S. GEOLOGICAL SURVEY
FAIRBANKS, ALASKA 99701, DENVER, COLORADO 80225, OR RESTON, VIRGINIA 22092
A FOLDER DESCRIBING TOPOGRAPHIC MAPS AND SYMBOLS IS AVAILABLE ON REQUEST

CONTOURS AND ELEVATIONS IN METERS

Copyright © 1983 by the
Geological Survey
Bureau of Land Management