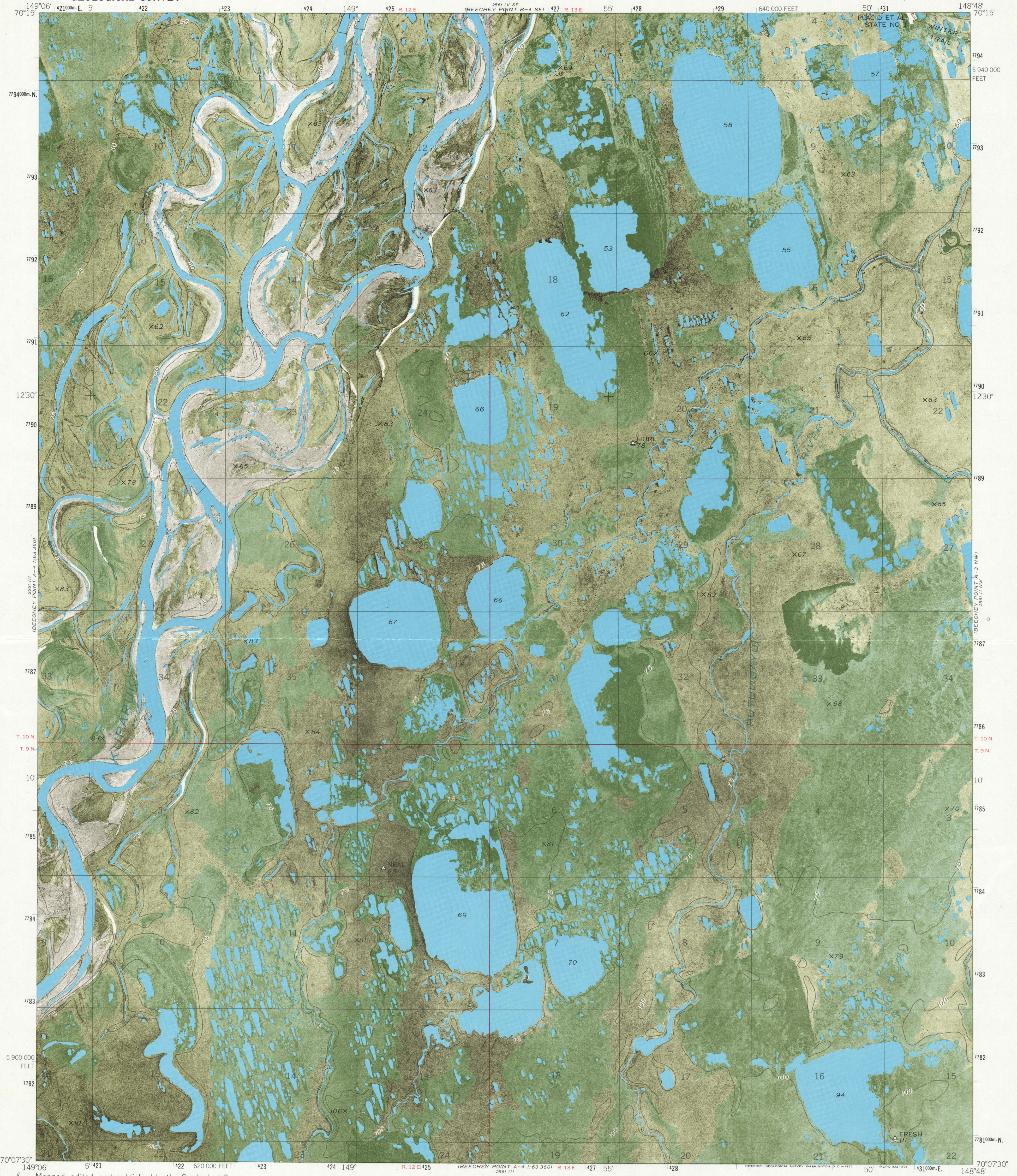
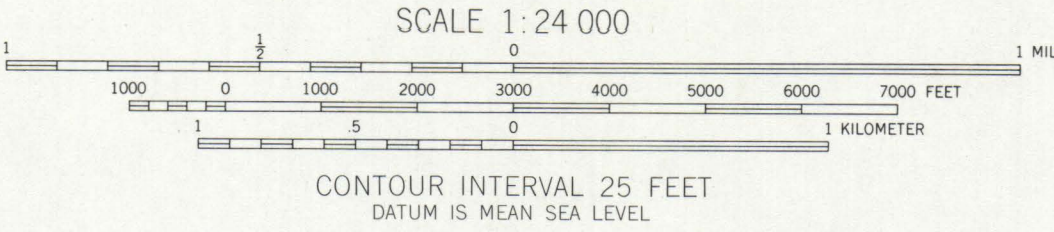
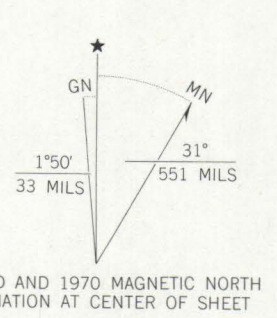


UNITED STATES  
DEPARTMENT OF THE INTERIOR  
GEOLOGICAL SURVEY

BEECHY POINT A-4 NE QUADRANGLE  
ALASKA  
1:24 000 SERIES ORTHOPHOTOMAP (TOPOGRAPHIC)



Mapped, edited, and published by the Geological Survey  
Control by USC&GS and USCE  
Orthophotomap prepared from aerial photograph  
taken June 26, 1970. Topography from Army Map Service  
1:50,000 series maps, surveyed 1955  
Universal Transverse Mercator projection,  
1927 North American datum  
10,000-foot grid based on Alaska coordinate system, zone 4  
1,000-meter Universal Transverse Mercator grid ticks,  
zone 6, shown in blue  
Gray land lines represent unsurveyed and unmarked locations  
predetermined by the Bureau of Land Management  
Folio U-3, Umiat Meridian



ROAD CLASSIFICATION  
Winter trail

BEECHY POINT A-4 NE, ALASKA  
N7007.5-W14848/7.5X18  
1970  
AMS 2561 III NE-SERIES Q801

FOR SALE BY U.S. GEOLOGICAL SURVEY  
FAIRBANKS, ALASKA 99701, DENVER, COLORADO 80225, OR WASHINGTON, D.C. 20242  
A FOLDER DESCRIBING TOPOGRAPHIC MAPS AND SYMBOLS IS AVAILABLE ON REQUEST