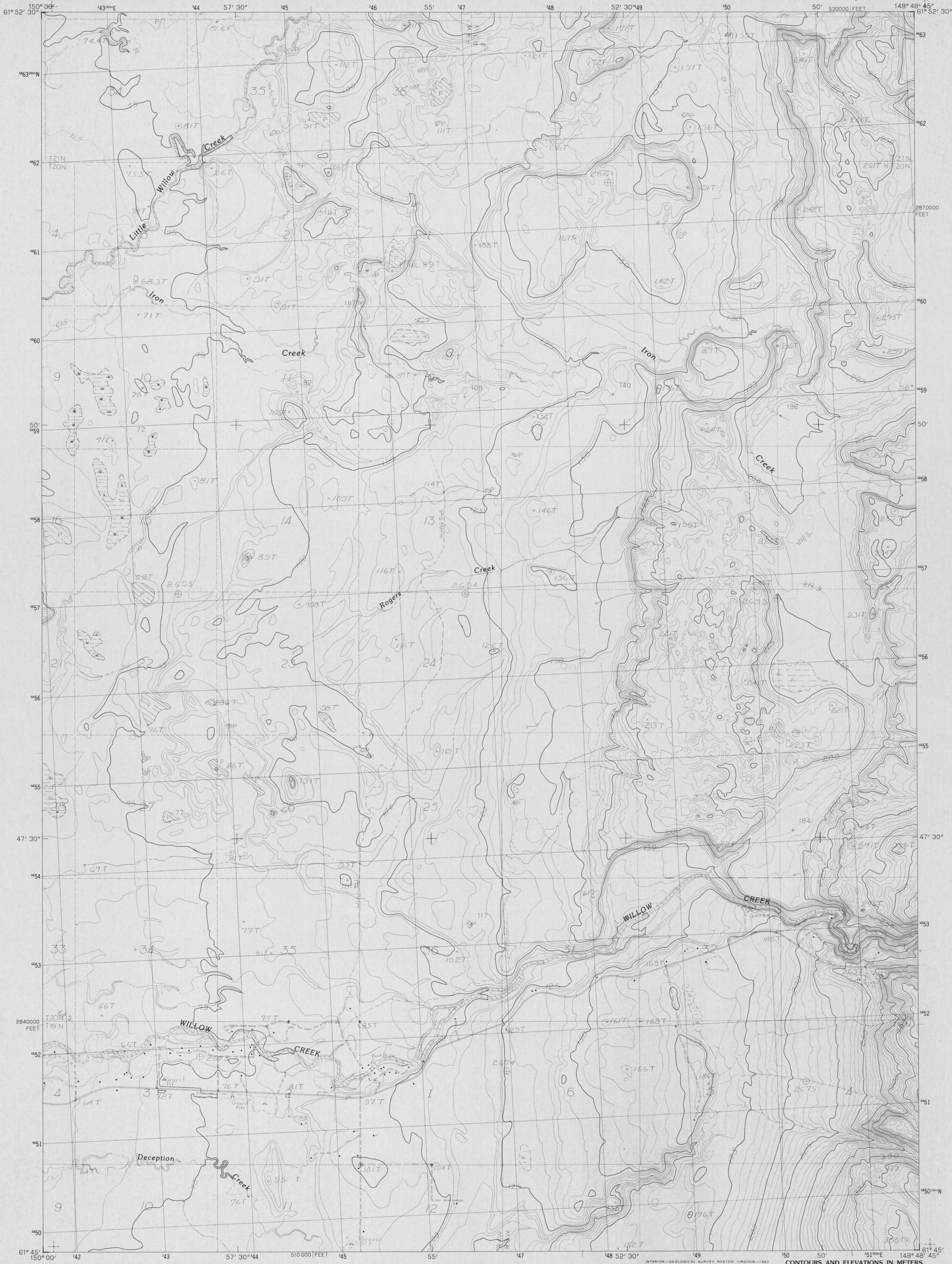


UNITED STATES  
DEPARTMENT OF THE INTERIOR  
GEOLOGICAL SURVEY

ANCHORAGE (D-8) SW QUADRANGLE  
ALASKA-MATANUSKA-SUSITNA BOROUGH  
1:25 000-SCALE SERIES (TOPOGRAPHIC)



PRODUCED BY THE UNITED STATES GEOLOGICAL SURVEY  
CONTROL BY USGS, NOS, NOAA AND USACE  
COMPILED FROM AERIAL PHOTOGRAPHS TAKEN  
FIELD CHECKED 1978 MAP EDITED 1977  
PROJECTION UNIVERSAL TRANSVERSE MERCATOR  
GRID 1000-METER UNIVERSAL TRANSVERSE MERCATOR ZONE 4  
10,000-FOOT STATE GRID TICKS ALASKA, ZONE 4  
UTM GRID DECLINATION 234 WEST  
1983 MAGNETIC NORTH DECLINATION 25 EAST  
VERTICAL DATUM NATIONAL GEODETIC VERTICAL DATUM OF 1929  
HORIZONTAL DATUM 1927 NORTH AMERICAN DATUM  
To place on the predicted North American Datum of 1983, move  
the projection lines 63 meters north and 119 meters east.  
Gray land lines represent unsurveyed and unmarked locations pre-  
determined by the Bureau of Land Management, Folio S-2, Seward  
Meridian.  
There may be private inholdings within the boundaries of any Fed-  
eral or State reservations shown on this map.  
All streams and lakes are perennial.

**PROVISIONAL MAP**  
Produced from original  
manuscript drawings. Infor-  
mation shown as of date of  
field check.

SCALE 1:25 000  
KILOMETERS  
METERS  
MILES  
FEET  
CONTOUR INTERVAL 5 METERS  
DOTTED LINES REPRESENT 2.5-METER CONTOURS  
CONTROL ELEVATIONS SHOWN TO NEAREST 0.1 METER  
OTHER ELEVATIONS SHOWN TO NEAREST METER  
To convert meters to feet multiply by 3.2808  
To convert feet to meters multiply by .3048  
THIS MAP COMPLIES WITH NATIONAL MAP ACCURACY STANDARDS  
FOR SALE BY U.S. GEOLOGICAL SURVEY, DENVER, COLORADO, 80225  
OR RESTON, VIRGINIA 22092

ROAD LEGEND  
Improved Road  
Unimproved Road  
Trail  
Interstate Route U.S. Route State Route  
ANCHORAGE (D-8) SW, ALASKA  
PROVISIONAL EDITION 1983  
ADJOINING 7.5 QUADRANGLE NAMES  
61149-G7-TM-025