

MAPPED BY U.S. COAST AND GEODETIC SURVEY AND  
U.S. CORPS OF ENGINEERS  
EDITED AND PUBLISHED BY THE GEOLOGICAL SURVEY

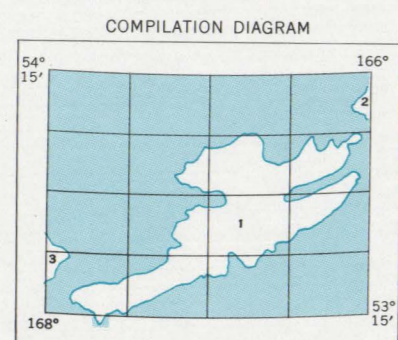
CONTROL BY USC&GS  
HYDROGRAPHY COMPILED FROM USC&GS CHARTS 8860 AND 8861  
TOPOGRAPHY FROM AERIAL PHOTOGRAPHS BY MULTIPLEX METHODS  
AND BY PLANE-TABLE SURVEYS, 1940-1944  
AERIAL PHOTOGRAPHS TAKEN 1937-1943

UNIVERSAL TRANSVERSE MERCATOR PROJECTION, 1927 NORTH AMERICAN DATUM  
100,000-FOOT GRID BASED ON ALASKA COORDINATE SYSTEM, ZONE 10  
10,000-METER UNIVERSAL TRANSVERSE MERCATOR GRID TICKS, ZONE 3,  
SHOWN IN BLUE

LAND LINES REPRESENT UNSURVEYED AND UNMARKED LOCATIONS  
PREDETERMINED BY THE BUREAU OF LAND MANAGEMENT  
FOLIO 5-31, SEWARD MERIDIAN

SWAMPS, AS PORTRAYED, INDICATE ONLY THE WETTER AREAS,  
USUALLY OF LOW RELIEF, AS INTERPRETED FROM AERIAL PHOTOGRAPHS

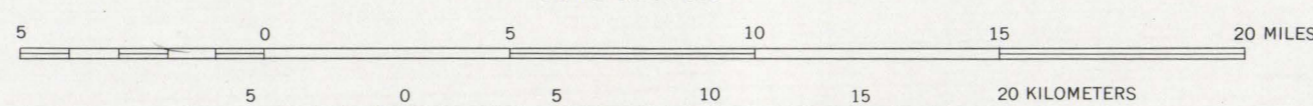
ALL ISLANDS EXCEPT UNALASKA, UNALASKA, SEDANKA, AKUTAN, AND  
THE NORTHERN PORTION OF AMANKAN ISLAND ARE WITHIN  
THE ALEUTIAN ISLANDS NATIONAL WILDLIFE REFUGE



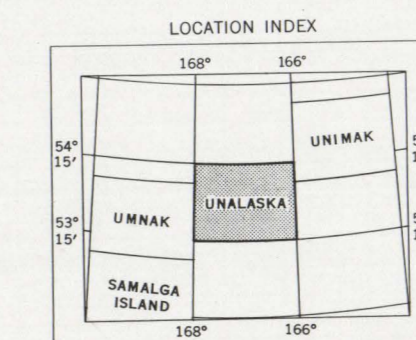
- 1. U.S. CORPS OF ENGINEERS  
1:62,500 MAPS, 1941
- 2. USC&GS CHART 8730
- 3. U.S. CORPS OF ENGINEERS, MAP  
FORT GLENN, 1:250,000, 1941

PROVISIONAL COMPILATION PENDING AVAILABILITY OF  
NEW PHOTOGRAPHY AND SURVEYS OF A NEARER ORDER

SCALE 1:250,000



CONTOUR INTERVAL 200 FEET  
AREAS NOT SURVEYED IN DETAIL ARE INDICATED BY BROKEN LINES  
NATIONAL GEODETIC VERTICAL DATUM OF 1929  
DEPTH CURVES IN FEET—DATUM IS MEAN LOWER LOW WATER  
SHORELINE SHOWN REPRESENTS APPROXIMATE LINE OF MEAN HIGH WATER  
1951 MAGNETIC DECLINATION AT SOUTH EDGE OF SHEET VARIES FROM 14°30' TO 16°00' EAST  
THIS MAP IS AVAILABLE IN BOTH SHADED RELIEF AND CONTOUR EDITIONS  
FOR SALE BY U.S. GEOLOGICAL SURVEY  
FAIRBANKS, ALASKA 99701, DENVER, COLORADO 80225, OR RESTON, VIRGINIA 22092  
A FOLDER DESCRIBING TOPOGRAPHIC MAPS AND SYMBOLS IS AVAILABLE ON REQUEST



ROAD CLASSIFICATION  
LIGHT DUTY ——— UNIMPROVED DIRT - - - - -

UNALASKA, ALASKA  
NS315-W16600/60X120

1951  
LIMITED REVISIONS 1976