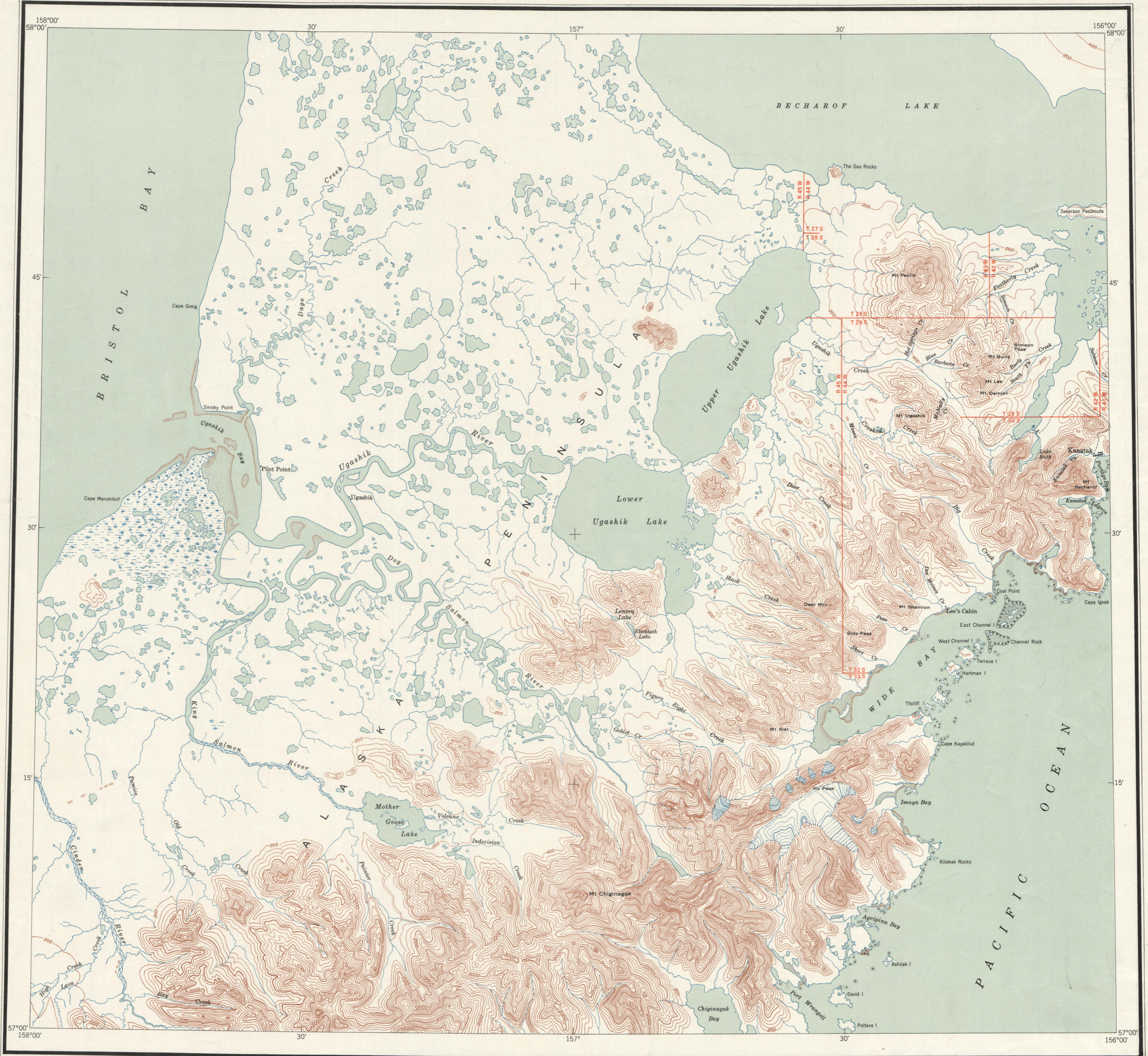


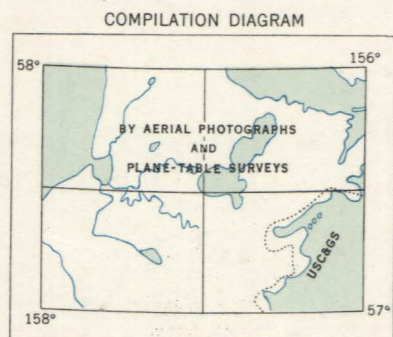
UGASHIK



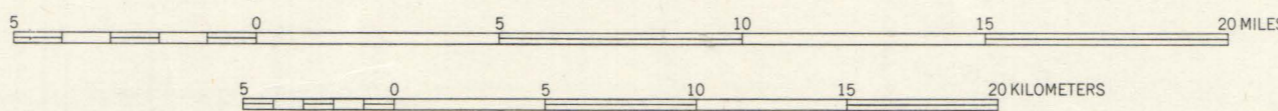
MAPPED, EDITED, AND PUBLISHED BY THE GEOLOGICAL SURVEY

CONTROL BY USGS AND USC&GS
TOPOGRAPHY FROM AERIAL PHOTOGRAPHS BY PHOTO-ALTIUDE METHODS
AND PLANE-TABLE SURVEYS 1921-1922 AND 1925
AERIAL PHOTOGRAPHS TAKEN MAY 1943

POLYCONIC PROJECTION. 1927 NORTH AMERICAN DATUM



SCALE 1:250,000



CONTOUR INTERVAL 200 FEET
DATUM IS APPROXIMATELY MEAN SEA LEVEL

1948 MAGNETIC DECLINATION AT SOUTH EDGE OF SHEET VARIES FROM 20°30' EAST TO 21°30' EAST

THIS MAP IS AVAILABLE IN BOTH SHADED RELIEF AND CONTOUR EDITIONS
FOR SALE BY U. S. GEOLOGICAL SURVEY, WASHINGTON 25, D. C.

LOCATION INDEX

| | | |
|--------------|----------|-----------------|
| 158° | 156° | |
| NUSHAGAK BAY | KAKNEK | KATMAI VOL. |
| 58° | | |
| BRISTOL BAY | UGASHIK | KARLUK |
| 57° | | |
| CHIGNIK | SUTWIK I | TRINITY ISLANDS |
| 158° | 156° | |

ROAD CLASSIFICATION

ALL WEATHER ROADS DRY WEATHER ROADS
HARD SURFACE NONE IMPROVED DIRT NONE
OTHER NONE UNIMPROVED DIRT NONE
TRAILS

UGASHIK, ALASKA
N5700-W15600/60x120

EDITION OF 1949

FILE COPY

Ugashik