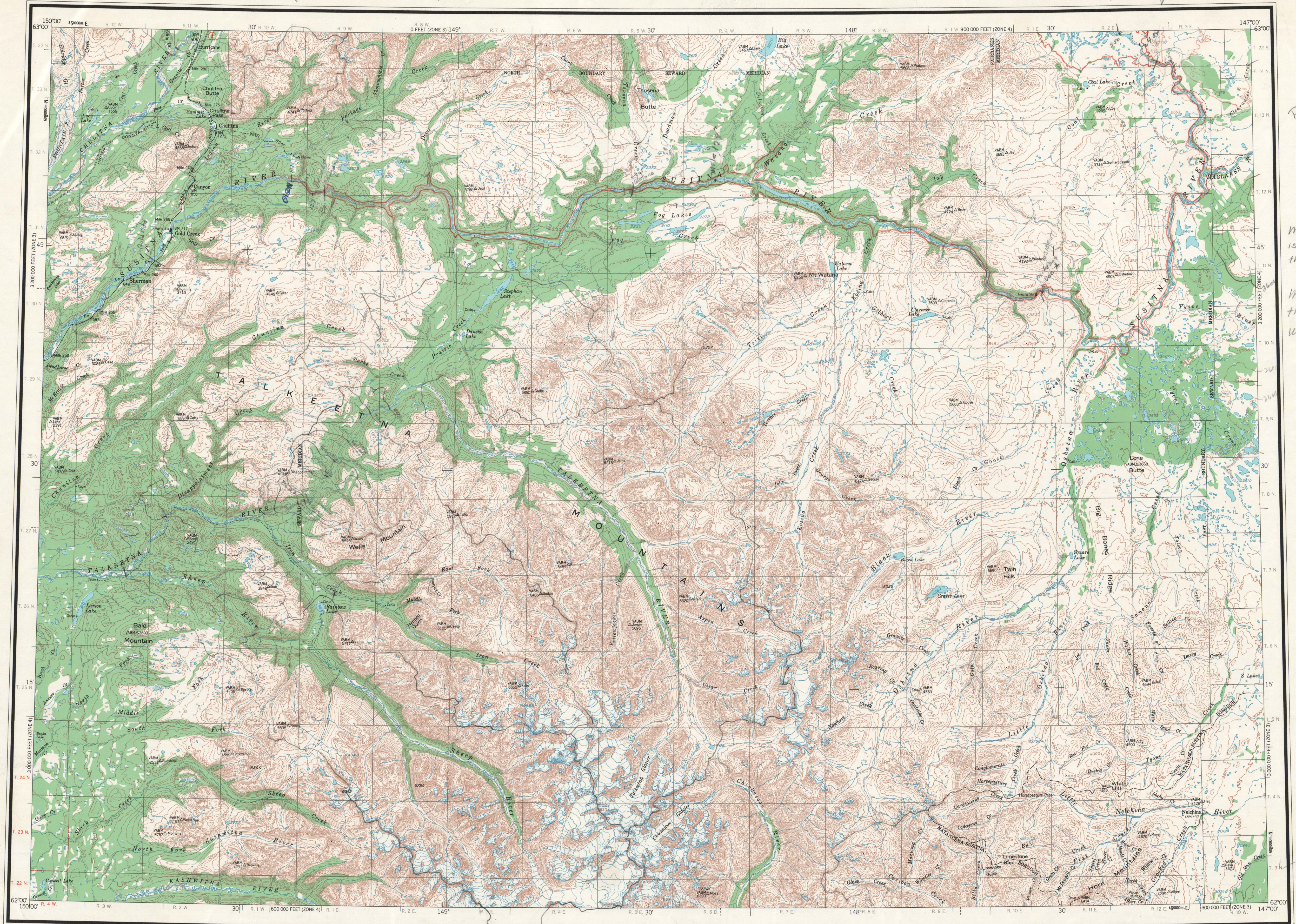


TALKEETNA MOUNTAINS



*142.7
140.4
MS 900 874*

*1132
3074000
210*

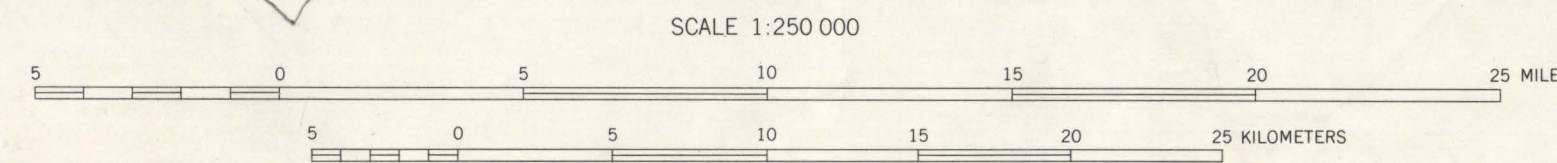
*Dana 1
Mile 246 US
3520 874*

PSC 443

*Mile 309 vcc site
is called Dana 1 by
the USGS in 1950*

*Mile 179 15
the USGS 1950
Watana site*

MAPPED, EDITED, AND PUBLISHED BY THE GEOLOGICAL SURVEY
CONTROL BY USGS AND USCGS
COMPILED IN 1955 FROM U.S. GEOLOGICAL SURVEY 1:63,360 SERIES MAPS,
1951, 1952, 1953, AND 1954
UNIVERSAL TRANSVERSE MERCATOR PROJECTION, 1927 NORTH AMERICAN DATUM
100,000-FOOT GRIDS BASED ON ALASKA COORDINATE SYSTEM, ZONES 3 AND 4
10,000-METER UNIVERSAL TRANSVERSE MERCATOR GRID TICKS ZONE 6
GRAY LAND LINES REPRESENT UNSURVEYED AND UNMARKED LOCATIONS
PREDETERMINED BY THE BUREAU OF LAND MANAGEMENT, FOLIOS S. 1, S. 2
SEWARD MERIDIAN; CR-3, COPPER RIVER MERIDIAN; F-9, F-10, FAIRBANKS MERIDIAN
SWAMPS AS PORTRAYED, INDICATE ONLY THE WETTER AREAS
USUALLY OF LOW RELIEF, AS INTERPRETED FROM AERIAL PHOTOGRAPHS



SCALE 1:250 000
CONTOUR INTERVAL 200 FEET
DATUM IS MEAN SEA LEVEL

LOCATION INDEX

150°	147°	
MT MCKINLEY	HEALY	MT HAYES
TALKEETNA	TALKEETNA MOUNTAINS	GULKANA
150°	147°	
TYONK	ANCHORAGE	VALDEZ

ROAD CLASSIFICATION
LIGHT DUTY
STATE ROUTE

TALKEETNA MOUNTAINS, ALASKA

1954
MINOR REVISIONS 1966

1955 MAGNETIC DECLINATION AT SOUTH EDGE OF SHEET VARIES FROM 26'00" TO 28'00" EAST
THIS MAP IS AVAILABLE IN BOTH SHADED RELIEF AND CONTOUR EDITIONS
FOR SALE BY U.S. GEOLOGICAL SURVEY
FAIRBANKS, ALASKA 99701, DENVER, COLORADO 80225, OR WASHINGTON, D.C. 20242
A FOLDER DESCRIBING TOPOGRAPHIC MAPS AND SYMBOLS IS AVAILABLE ON REQUEST