



F.P. Proj. #4

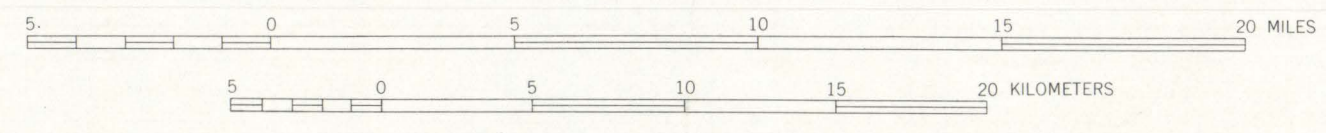
Tease EXA 6  
EXM 3  
M 7  
1000' Head

Dam, pipe  
2500' pipe  
2060'  
4860'  
2600' Flume  
720' pipe  
1340'  
4660'

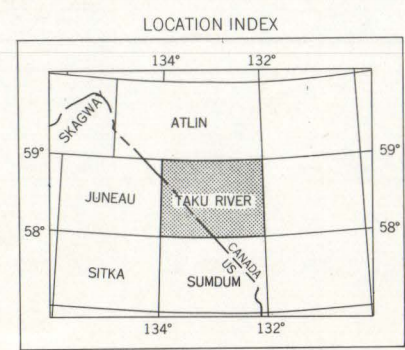
3 pool Dam  
M 8 2500' tunnel  
M 9 1000' penstock  
176' head

MAPPED, EDITED, AND PUBLISHED BY THE GEOLOGICAL SURVEY  
CONTROL BY USGS, USCGS, AND INTERNATIONAL BOUNDARY COMMISSION  
COMPILED IN 1965 FROM U.S. GEOLOGICAL SURVEY 1:63,360 SCALE MAPS,  
SURVEYED 1951 AND 1960. MAP NOT FIELD CHECKED.  
CANADIAN PORTION COPIED FROM TULSEQUAH, 1:250,000 QUADRANGLE (1:250,000)  
ARMY SURVEY ESTABLISHMENT, RCE  
SELECTED HYDROGRAPHIC DATA COMPILED FROM USCGS  
CHARTS 8227 (1952) AND 8229 (1952)  
THIS INFORMATION IS NOT INTENDED FOR NAVIGATIONAL PURPOSES  
UNIVERSAL TRANSVERSE MERCATOR PROJECTION, 1927 NORTH AMERICAN DATUM  
100,000 FOOT GRID BASED ON ALASKA COORDINATE SYSTEM, ZONE 1  
ZONE 8, SHOWN IN BLUE  
GRAY LAND LINES REPRESENT UNSURVEYED AND UNMARKED LOCATIONS  
PREDETERMINED BY THE STATE OF ALASKA, DIVISION OF LANDS, FOLIO CR 12  
AND FROM COMPUTATIONS FOR THE COPPER RIVER MERIDIAN  
SWAMPS, AS PORTRAYED, INDICATE ONLY THE WETTER AREAS,  
USUALLY OF LOW RELIEF, AS INTERPRETED FROM AERIAL PHOTOGRAPHS

SCALE 1:250,000



CONTOUR INTERVAL 200 FEET IN THE UNITED STATES AND 500 FEET IN CANADA  
DATUM IS MEAN SEA LEVEL  
DEPTH CURVES IN FEET—DATUM IS MEAN LOWER LOW WATER  
SICHELINE SHOWN REPRESENTS THE APPROXIMATE LINE OF MEAN HIGH WATER  
1960 MAGNETIC DECLINATION AT SOUTH EDGE OF SHEET IS 29°30' EAST



ROAD CLASSIFICATION  
UNIMPROVED DIRT - - - - -

TAKU RIVER, ALASKA-CANADA  
N5800-W13200/60K120

1960

THIS MAP IS AVAILABLE IN BOTH SHADED RELIEF AND CONTOUR EDITIONS  
FOR SALE BY U.S. GEOLOGICAL SURVEY  
FAIRBANKS, ALASKA, 99701, DENVER, COLORADO 80225, OR WASHINGTON, D.C. 20242  
A FOLDER DESCRIBING TOPOGRAPHIC MAPS AND SYMBOLS IS AVAILABLE ON REQUEST