

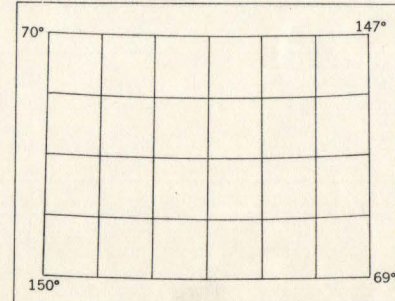
MAPPED, EDITED, AND PUBLISHED BY THE GEOLOGICAL SURVEY IN COOPERATION WITH THE DEPARTMENT OF THE NAVY, NAVAL PETROLEUM RESERVE

CONTROL BY USAF

CULTURE AND DRAINAGE COMPILED FROM TRIMETROGON PHOTOGRAPHY 1943 TOPOGRAPHY BY STEREOPHOTOGRAMMETRIC (PHOTOALTADE) METHODS

UNIVERSAL TRANSVERSE MERCATOR PROJECTION, ZONE 6 ASTRONOMICAL DATUM

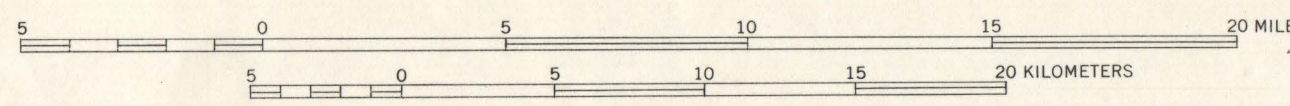
COMPILED DIAGRAM



TOPOGRAPHY FROM PHOTOALTADE COMPILED AND ADJUSTED TO TRIMETROGON BASE

PROVISIONAL COMPILATION PENDING AVAILABILITY OF NEW PHOTOGRAPHY AND SURVEYS OF A HIGHER ORDER

SCALE 1:250 000

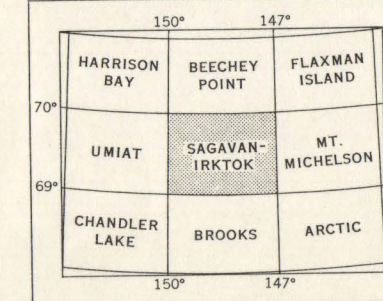


CONTOUR INTERVAL 1000 FEET
DOTTED LINES REPRESENT HALF-INTERVAL CONTOURS
DATUM IS MEAN SEA LEVEL

1951 MAGNETIC DECLINATION AT SOUTH EDGE OF SHEET VARIES FROM 31° TO 33° EAST

FOR SALE BY U. S. GEOLOGICAL SURVEY, FEDERAL CENTER, DENVER, COLORADO OR WASHINGTON 25, D. C.
A FOLDER DESCRIBING TOPOGRAPHIC MAPS AND SYMBOLS IS AVAILABLE ON REQUEST

LOCATION INDEX



ROAD CLASSIFICATION

ALL WEATHER ROADS DRY WEATHER ROADS
HARD SURFACE NONE IMPROVED DIRT NONE
OTHER NONE UNIMPROVED DIRT NONE
TRAILS NONE

SAGAVANIRK TOK, ALASKA
N6900-W14700/60X180

EDITION OF 1951