

Source Water Assessment

A Hydrogeologic Susceptibility and Vulnerability Assessment for Three Bears #60 Drinking Water System, Wasilla, Alaska PWSID 220118

November 2006

DRINKING WATER PROTECTION REPORT Report 1586
Alaska Department of Environmental Conservation

Source Water Assessment for Three Bears #60 Drinking Water System Wasilla, Alaska PWSID 220118

November 2006

DRINKING WATER PROTECTION REPORT Report 1586

The Drinking Water Protection (DWP) section of the Drinking Water Program is producing Source Water Assessments in compliance with the Safe Drinking Water Act Amendments of 1996. Each assessment includes a delineation of the source water area, an inventory of potential and existing contaminant sources that may impact the water, a risk ranking for each of these contaminants, and an evaluation of the potential vulnerability of these drinking water sources.

These assessments are intended to provide public water systems owners/operators, communities, and local governments with the best available information that may be used to protect the quality of their drinking water. The assessments combine information obtained from various sources, including the U.S. Environmental Protection Agency, Alaska Department of Environmental Conservation (ADEC), public water system owners/operators, and other public information sources. The results of this assessment are subject to change if additional data becomes available. It is anticipated this assessment will be updated every five years to reflect any changes in the vulnerability and/or susceptibility of public drinking water source. If you have any additional information that may affect the results of this assessment, please contact the Program Coordinator of DWP, (907) 269-7521.

CONTENTS

	Page		Page
Executive Summary	1	Inventory of Potential and Existing Contaminant Sources	2
Three Bears #60 Public Drinking Water System	1	Ranking of Contaminant Risks Vulnerability of Three Bears #60 Drinking Water System	2
Three Bears #60 Protection Area	1	References	6

TABLES

TABLE	1. Definition of Zones	2
	2. Susceptibility	<u>3</u>
	3. Contaminant Risks	3
	3. Overall Vulnerability	3

APPENDICES

APPENDIX	A. Three Bears #60 Drinking Water Protection Area (Map 1)
	B. Contaminant Source Inventory for Three Bears #60 (Table 1)
	Contaminant Source Inventory and Risk Ranking for Three Bears #60 – Bacteria and Viruses (Table 2)
	Contaminant Source Inventory and Risk Ranking for Three Bears #60 – Nitrates/Nitrites (Table 3)
	Contaminant Source Inventory and Risk Ranking for Three Bears #60 – Volatile Organic Chemicals (Table 4)
	Contaminant Source Inventory and Risk Ranking for Three Bears #60 – Heavy Metals, Cyanide, and Other Inorganic Chemicals (Table 5)
	Contaminant Source Inventory and Risk Ranking for Three Bears #60 – Synthetic Organic Chemicals (Table 6)
	Contaminant Source Inventory and Risk Ranking for Three Bears #60 – Other Organic Chemicals (Table 7)
	C. Three Bears #60 Drinking Water Protection Area and Potential and Existing Contaminant Sources (Map 2)

Source Water Assessment for Three Bears #60 Source of Public Drinking Water, Wasilla, Alaska

Drinking Water Protection Alaska Department of Environmental Conservation

EXECUTIVE SUMMARY

This source water assessment provides an evaluation of the vulnerability of the public water system serving the Three Bears #60 to potential contamination. This Class A (community) water system consists of one well off of the Palmer-Wasilla Hwy and Trunk Road in Wasilla. The well received a natural susceptibility rating of **High**. This rating is a combination of a susceptibility rating of **Low** for the actual wellhead and a **Very High** rating for the aquifer in which the well is drawing water from. Identified potential and current sources of contamination for the Three Bears #60 public water system include: injection wells, residential areas, septic systems, under/aboveground storage tanks, and roads. These are considered as sources of bacteria and viruses, nitrates and/or nitrites, volatile organic chemicals (VOCs), heavy metals, cyanide, and other inorganic chemicals, synthetic organic chemicals (SOCs), and other organic chemicals (OOCs). Combining the natural susceptibility of the well with the contaminant risk, the public water system for Three Bears #60 received an overall vulnerability rating of **Very High** for bacteria and viruses, nitrates and/or nitrites, heavy metals, cyanide, and other inorganic chemicals, and a **Medium** for VOCs, OOCs, and SOCs.

THREE BEARS #60 PUBLIC DRINKING WATER SYSTEM

Three Bears #60 public water system is a Class A (community) water system consisting of one well off of the Palmer-Wasilla Highway and Trunk Road in Wasilla.

The chief aquifers in the Wasilla area are composed of outwash sand and gravel laid down by melt-water streams or in lakes.

The outwash deposits are of two chief forms. The first consists of sheet-like deposits that lie just beneath the ground surface. These deposits range in thickness from a few feet to more than 100 feet. They typically rest on till or bedrock. The water in these deposits is unconfined. The other outwash deposits are buried beneath till. They are known to be as much as 50 to 60 feet thick, and probably are considerably thicker in some places. They commonly contain confined, or artesian, groundwater.

The glacial till and bedrock form aquifers of minor importance. The chief hydrologic significance of the till is in confining artesian aquifers. Generally, the till is poorly permeable, although locally thin layers of sand may yield small quantities of water. Till that is present at or near the land surface in much of the area makes the acquisition of shallow groundwater difficult. The bedrock is poorly permeable. It yields water only from fractures, whose location and frequency cannot be easily predicted.

In the Mat-Su Valley, groundwater is primarily recharged by snowmelt and precipitation infiltrating both directly and from the infiltration into the foothill slopes of the Talkeetna and Chugach Mountains. In addition,, aquifers may be recharged by streams where surface water percolates into surrounding permeable sediments (losing reaches of streams. Groundwater flow in the confined aquifers is generally from the north and north-northwest. The direction of groundwater flow in the upper unconfined aquifer is more variable due to the influence from surficial topography as well as its close connection with surface water bodies (Trainer,1960).

Although the quality can vary significantly in a short distance, groundwater supplies are abundant in the area. The Wasilla area has a central water system, and several subdivisions have private water systems. Many homes and businesses in the area, however, rely on individual wells for their water supply. Many of these wells are shallow with depths of less than 100 feet. Static water level in these shallow wells is approximately 30 feet below the surface. (Trainer, 1960)

The Three Bears #60 public water system serves approximately 35 non-residents through 1 service connection.

THREE BEARS #60 DRINKING WATER PROTECTION AREA

The pathways most likely for surface contamination to reach the groundwater are identified as the first step in determining a drinking water system's risk. These areas are determined by looking at the characteristics of the soil, groundwater, aquifer, and well.

The most probable area for contamination to reach the drinking water well is the area that contributes water to the well, the groundwater capture zone. The groundwater capture zone is located in the area circling the well (the area influenced by pumping) and also the area of the water table upgradient of the well, usually forming a parabola shape.

There are many different methods for calculating the size of capture zones. Drinking Water Protection (DWP) uses a combination of two simple groundwater flow equations, the Thiem and uniform flow equations for all groundwater wells screened in unconsolidated material. The orientation of the capture zone is then drawn using a water table elevation map (if available) or a land surface elevation map of the area. The capture zone calculated by the DWP is an estimate using the available information and resources, and may differ slightly from the actual capture zone.

The parameters used to calculate the shape of this capture zone are general for the whole alluvial plain and were obtained from various United States Geological Survey (USGS) reports, area well logs, and the Groundwater textbook by Freeze and Cherry (Freeze and Cherry, 1979).

Because of uncertainties and changing site conditions, a factor of safety is added to the groundwater capture zone to form the drinking water protection area for the well.

The protection areas established for wells are usually separated into two zones, limited by the watershed. These zones correspond to times-of-travel (TOT) of the water moving through the aquifer to the well (plus the factor of safety).

The following is a summary of the two zones for wells and the calculated time-of-travel for each:

Table 1. Definition of Zones

Zone	Definition
A	Several months travel time
B	Less than 2 years time-of-travel

The time of travel for contaminants within the water varies with their unique physical and chemical characteristics.

The drinking water protection area outlined for the Three Bears #60 on Map 1 of Appendix A will serve as the focus for voluntary protection efforts.

INVENTORY OF POTENTIAL AND EXISTING CONTAMINANT SOURCES

Drinking Water Protection (DWP) has completed an inventory of potential and existing sources of contamination within the Three Bears #60 protection area. This inventory was completed through a search of agency records and other publicly available information. Potential drinking water contaminants are found within agricultural, residential, commercial, and industrial areas, but can also occur within areas that have little or no development.

For the basis of all Class A public water system assessments, six categories of drinking water contaminants were inventoried. They include:

- Bacteria and viruses;
- Nitrates and/or nitrites;
- Volatile organic chemicals;
- Heavy metals, cyanide, and other inorganic chemicals;
- Synthetic organic chemicals; and
- Other organic chemicals.

The sources are displayed on Map 2 of Appendix C and summarized in Table 1 of Appendix B.

RANKING OF CONTAMINANT RISKS

Once the potential and existing sources of contamination have been identified, they are each assigned a ranking according to what type and level of risk they represent. Ranking of contaminant risks for a “potential” or “existing” source of contamination is a combination of toxicity and volume associated with that source. Rankings include:

- Low
- Medium
- High
- Very High

Tables 2 through 7 in Appendix B contain the ranking of inventoried potential and existing sources of contamination with respect to bacteria and viruses, nitrates and/or nitrites, volatile organic chemicals, heavy metals, cyanide and other inorganic chemicals, synthetic organic chemicals and other organic chemical

VULNERABILITY OF THREE BEARS #60 DRINKING WATER SYSTEM

The vulnerability of public drinking water systems to regulated contaminants is determined by assessing the susceptibility of the wellhead, the susceptibility of the aquifer and the potential contaminant sources identified within the protection area.

The Drinking Water Protection developed a vulnerability assessment tool that assigns a vulnerability risk ranking based upon various factors associated with the well, aquifer and potential and existing contaminants identified within the protection area.

Factors contributing to the susceptibility of the wellhead are: whether the sanitary seal in place, protection from flooding, and if the well casing is properly grouted.

The wellhead for the Three Bears #60 received a **Low** susceptibility rating. The most recent sanitary survey (6/25/2005) indicates the well is capped with a sanitary seal, the land surface is sloped away from the well, and the well is grouted. A sanitary seal prevents potential contaminant from entering the well while sloping of the land surface and grouting help to prevent potential contaminants from traveling down the outside of the well casing.

Factors contributing to the susceptibility of the aquifer are: whether the aquifer is confined or unconfined, whether the well is completed in unconsolidated or fractured bedrock, whether wells and bore holes are penetrating the aquifer and, if applicable, the confining layer.

The aquifer the Three Bears #60 well is completed in received a **Very High** susceptibility rating. The highly transmissive aquifer material and the high water table in the area allow contaminants to travel downward from the surface with precipitation and surface water runoff. In addition, the presence of boreholes within the protection area may provide contaminants a direct route to the groundwater. Table 2 summarizes the Susceptibility scores and ratings for Three Bears #60.

Table 2: Susceptibility

	Rating
Susceptibility of the Wellhead	Low
Susceptibility of the Aquifer	Very High
Natural Susceptibility	High

The Contaminant Risk has been derived from an evaluation of the routine sampling results of the water system and the presence of potential sources of contamination. Contaminant risks to a drinking water source depend on the type and distribution of contaminant sources.

Table 3 summarizes the Contaminant Risks for each category of drinking water contaminants.

Table 3. Contaminant Risks

Category	Rating
Bacteria and Viruses	Very High
Nitrates and/or Nitrites	Very High
Volatile Organic Chemicals	Medium
Heavy Metals, Cyanide, and Other Inorganic Chemicals	Very High
Synthetic Organic Chemicals	Low
Other Organic Chemicals	Low

Finally, an overall vulnerability is determined for each water system by combining each of the contaminant risk scores with the natural susceptibility score:

$$\begin{array}{r}
 \text{Natural Susceptibility} \\
 + \\
 \text{Contaminant Risks} \\
 = \\
 \text{Vulnerability of the} \\
 \text{Drinking Water Source to Contamination}
 \end{array}$$

Table 4 contains the overall ratings for each of the six categories of drinking water contaminants.

Table 4. Overall Vulnerability

Category	Rating
Bacteria and Viruses	Very High
Nitrates and Nitrites	Very High
Volatile Organic Chemicals	Medium
Heavy Metals, Cyanide, and Other Inorganic Chemicals	Very High
Synthetic Organic Chemicals	Medium
Other Organic Chemicals	Medium

Bacteria and Viruses

Class V injection wells in the protection area represent the greatest risk for bacteria and viruses to the drinking water well. For a complete listing of potential sources for bacteria and virus contamination please see Table 2 in Appendix B.

Only a small amount of bacteria and viruses are required to endanger public health. Coliforms are found naturally in the environment and although they aren't necessarily a health threat, it is an indicator of other potentially harmful bacteria in the water, more specifically, fecal coliforms and E. coli which only come from human and animal fecal waste (EPA, 2006). Harmful bacteria can cause diarrhea, cramps, nausea, headaches, or other symptoms (EPA, 2006). No

samples have tested positive for coliforms in recent history.

After combining the contaminant risk for bacteria and viruses with the natural susceptibility of the well, the overall vulnerability of the well to contamination is very high.

Nitrates and Nitrites

Class V injection wells in the protection area also represent the greatest risk to nitrates and nitrites for this source of public drinking water. For a complete listing of potential sources for nitrate and nitrite contamination please see Table 3 in Appendix B.

Nitrates are very mobile, moving at approximately the same rate as water. Nitrates have not been detected in recent sampling history for the Three Bears #60 well.

After combining the contaminant risk for nitrates and nitrites with the natural susceptibility of the well, the overall vulnerability of the well to contamination is very high.

Volatile Organic Chemicals

Aboveground diesel tanks represent the greatest identified risk for volatile organic chemical contamination to the well. For a complete listing of potential sources for bacteria and virus contamination please see Table 4 in Appendix B.

Toluene has been detected (4/21/2005) in the Three Bears #60 well. However the level of detection was far below the maximum contaminant level (MCL = 1mg/L) for toluene. In large quantities above the MCL, toluene can cause nervous system, kidney or liver problems (EPA 2006).

After combining the contaminant risk for volatile organic chemicals with the natural susceptibility of the well, the overall vulnerability of the well to contamination is medium.

Heavy Metals, Cyanide, and Other Inorganic Chemicals

Roads and septic systems represent the greatest risk for inorganic chemicals to the well. For a complete listing of potential sources for bacteria and virus contamination please see Table 5 in Appendix B.

Inorganic chemicals were sampled on 4/21/2005, and arsenic was detected at 110% of its maximum contaminant level (MCL). The MCL for arsenic is 0.01 mg/L. In greater quantities, arsenic is known to cause skin damage, problems with circulatory systems, and may create an increased risk of developing cancer (EPA, 2006).

After combining the contaminant risk for heavy metals, cyanide and other inorganic chemicals with the natural

susceptibility of the well, the overall vulnerability of the well to contamination is very high.

Synthetic Organic Chemicals

Septic systems represent the greatest risk for synthetic organic chemicals to the well. For a complete listing of potential sources for bacteria and virus contamination please see Table 6 in Appendix B.

Synthetic organic chemicals have not been sampled for in this water system.

After combining the contaminant risk for synthetic organic chemicals with the natural susceptibility of the well, the overall vulnerability of the well to contamination is medium.

Other Organic Chemicals

Septic systems represent the greatest risk for other organic chemicals to the well. For a complete listing of potential sources for bacteria and virus contamination please see Table 7 in Appendix B.

Other organic chemicals have not been sampled for in this water system.

After combining the contaminant risk for synthetic organic chemicals with the natural susceptibility of the well, the overall vulnerability of the well to contamination is medium.

REFERENCES

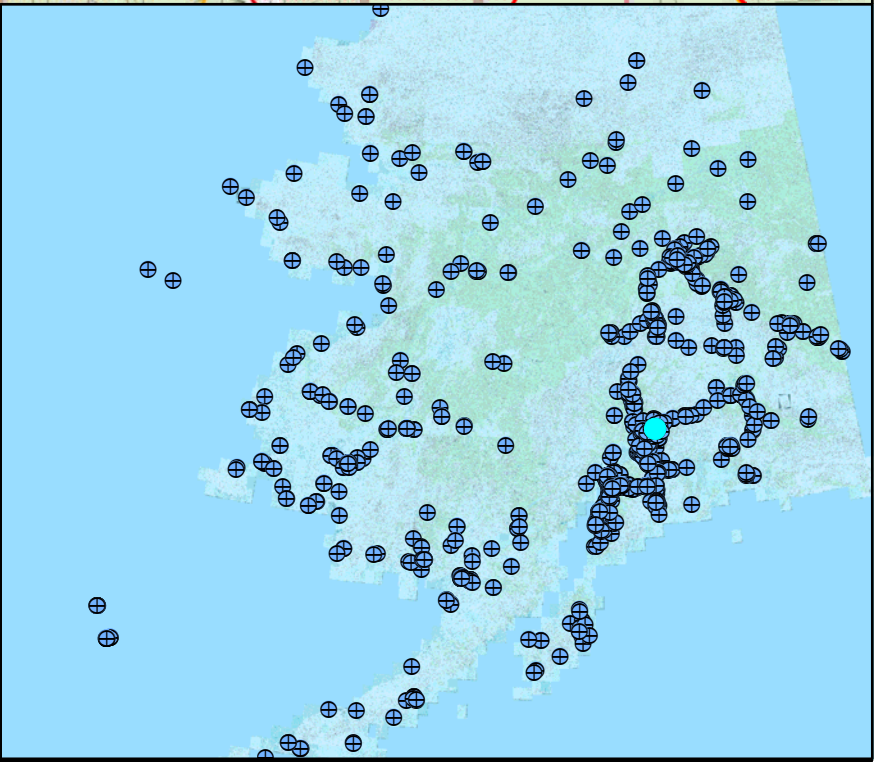
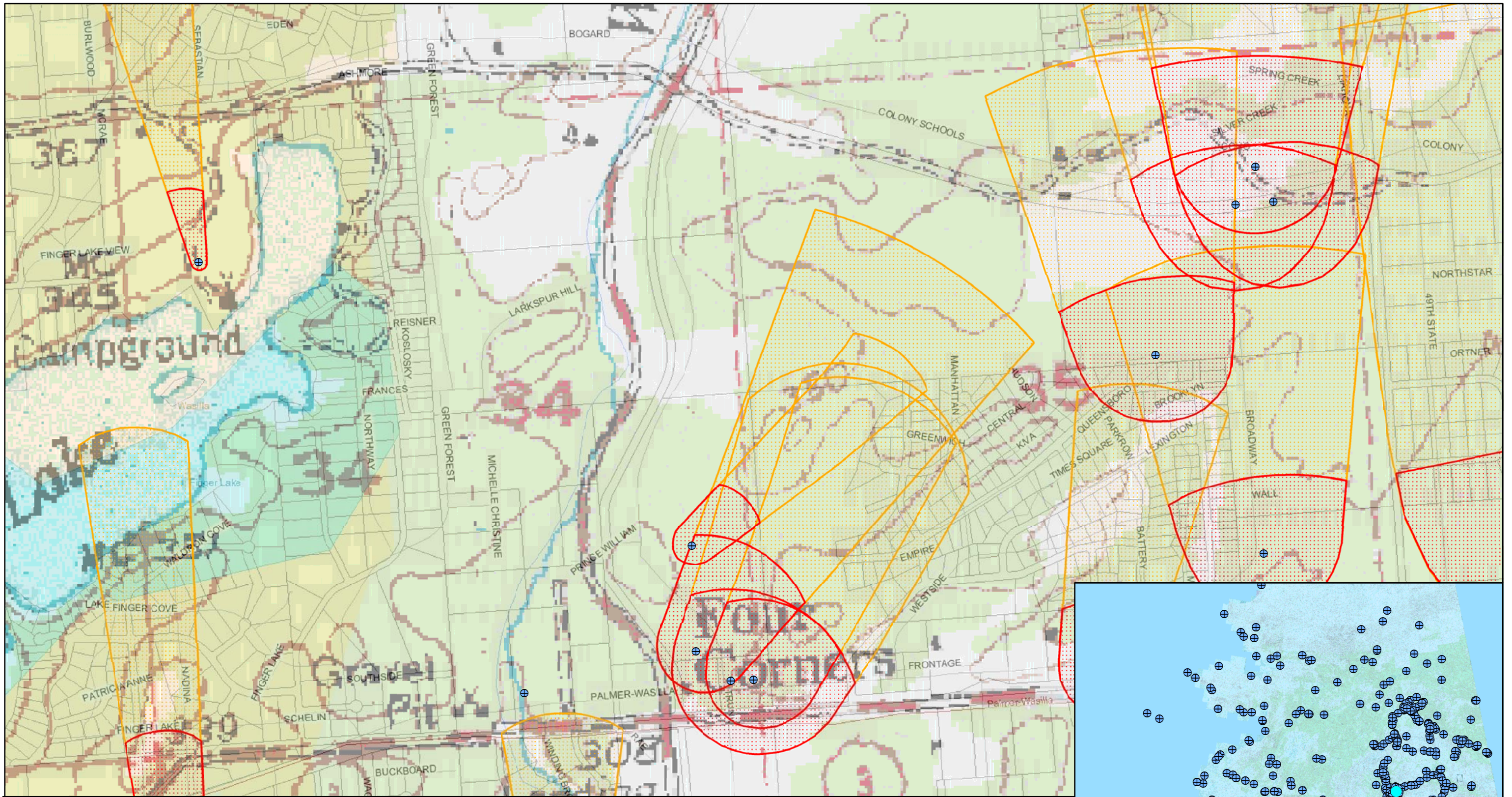
Freeze, R.A. and Cherry, J.A., 1979. Groundwater. Prentice-Hall, Englewood Cliffs, NJ.

United States Environmental Protection Agency (EPA), 2006 [WWW document]. URL
<http://www.epa.gov/safewater/mcl.html>.

Trainer, F.W., 1960, Geology and Groundwater Resources, Matanuska Valley, Alaska, U.S. Geological Survey
Water Supply Paper 1494 U.S. Printing Office, Washington, D.C.

APPENDIX A

Three Bears #60 Drinking Water Protection Area Location Map (Map 1)



Map 1- Three Bears and Surrounding Water Systems

PWSID: 220118.001

Alaska Department of Environmental Conservation

Alaska Drinking Water Protection Program

0 1:9,401 2,200 Feet

Data Sources:
 Kenai Borough: Roads and parcels
 Aerial Photo: USGS and Microsoft Terraserver
 Potential Sources of Contamination: ADEC

- ⊕ Public Water Sources
- ▨ Zone A Protection Area
- ▨ Zone B Protection Area

APPENDIX B

Contaminant Source Inventory and Risk Ranking for Three Bears #60 (Tables 1-7)

Table 1

**Contaminant Source Inventory for
Three Bears Retail Store #60**

PWSID 220118.001

Contaminant Source Type	Contaminant Source ID	CS ID tag	Zone	Map Number	Comments
Injection wells (Class V) Large-Capacity Septic System (Drainfield Disposal Method)	D10	D10-1	A		
Residential Areas	R01	R01-1-30	A		30 acres in Zone A.
Tanks, diesel (above ground)	T06	T06-1	A		
Highways and roads, paved (cement or asphalt)	X20	X20-4-5	A		
Injection wells (Class V) Large-Capacity Septic System (Drainfield Disposal Method)	D10	D10-2-3	B		
Residential Areas	R01	R01-31-62	B		32 acres in Zone B.
Septic systems (serves one single-family home)	R02	R02-1-3	B		
Highways and roads, paved (cement or asphalt)	X20	X20-1-3	B		

Table 2

*Contaminant Source Inventory and Risk Ranking for
Three Bears Retail Store #60
Sources of Bacteria and Viruses*

PWSID 220118.001

<i>Contaminant Source Type</i>	<i>Contaminant Source ID</i>	<i>CS ID tag</i>	<i>Zone</i>	<i>Risk Ranking for Analysis</i>	<i>Map Number</i>	<i>Comments</i>
Injection wells (Class V) Large-Capacity Septic System (Drainfield Disposal Method)	D10	D10-1	A	High		
Residential Areas	R01	R01-1-30	A	Low		30 acres in Zone A.
Highways and roads, paved (cement or asphalt)	X20	X20-4-5	A	Low		
Injection wells (Class V) Large-Capacity Septic System (Drainfield Disposal Method)	D10	D10-2-3	B	High		
Residential Areas	R01	R01-31-62	B	Low		32 acres in Zone B.
Septic systems (serves one single-family home)	R02	R02-1-3	B	Low		
Highways and roads, paved (cement or asphalt)	X20	X20-1-3	B	Low		

Table 3

*Contaminant Source Inventory and Risk Ranking for
Three Bears Retail Store #60
Sources of Nitrates/Nitrites*

PWSID 220118.001

<i>Contaminant Source Type</i>	<i>Contaminant Source ID</i>	<i>CS ID tag</i>	<i>Zone</i>	<i>Risk Ranking for Analysis</i>	<i>Map Number</i>	<i>Comments</i>
Injection wells (Class V) Large-Capacity Septic System (Drainfield Disposal Method)	D10	D10-1	A	High		
Residential Areas	R01	R01-1-30	A	Low		30 acres in Zone A.
Highways and roads, paved (cement or asphalt)	X20	X20-4-5	A	Low		
Injection wells (Class V) Large-Capacity Septic System (Drainfield Disposal Method)	D10	D10-2-3	B	High		
Residential Areas	R01	R01-31-62	B	Low		32 acres in Zone B.
Septic systems (serves one single-family home)	R02	R02-1-3	B	Low		
Highways and roads, paved (cement or asphalt)	X20	X20-1-3	B	Low		

Table 4

*Contaminant Source Inventory and Risk Ranking for
Three Bears Retail Store #60
Sources of Volatile Organic Chemicals*

PWSID 220118.001

<i>Contaminant Source Type</i>	<i>Contaminant Source ID</i>	<i>CS ID tag</i>	<i>Zone</i>	<i>Risk Ranking for Analysis</i>	<i>Map Number</i>	<i>Comments</i>
Injection wells (Class V) Large-Capacity Septic System (Drainfield Disposal Method)	D10	D10-1	A	Low		
Residential Areas	R01	R01-1-30	A	Low		30 acres in Zone A.
Tanks, diesel (above ground)	T06	T06-1	A	Medium		
Highways and roads, paved (cement or asphalt)	X20	X20-4-5	A	Low		
Injection wells (Class V) Large-Capacity Septic System (Drainfield Disposal Method)	D10	D10-2-3	B	Low		
Residential Areas	R01	R01-31-62	B	Low		32 acres in Zone B.
Septic systems (serves one single-family home)	R02	R02-1-3	B	Low		
Highways and roads, paved (cement or asphalt)	X20	X20-1-3	B	Low		

Table 5

*Contaminant Source Inventory and Risk Ranking for
Three Bears Retail Store #60
Sources of Heavy Metals, Cyanide and Other Inorganic Chemicals*

PWSID 220118.001

<i>Contaminant Source Type</i>	<i>Contaminant Source ID</i>	<i>CS ID tag</i>	<i>Zone</i>	<i>Risk Ranking for Analysis</i>	<i>Map Number</i>	<i>Comments</i>
Injection wells (Class V) Large-Capacity Septic System (Drainfield Disposal Method)	D10	D10-1	A	Low		
Residential Areas	R01	R01-1-30	A	Low		30 acres in Zone A.
Highways and roads, paved (cement or asphalt)	X20	X20-4-5	A	Low		
Injection wells (Class V) Large-Capacity Septic System (Drainfield Disposal Method)	D10	D10-2-3	B	Low		
Residential Areas	R01	R01-31-62	B	Low		32 acres in Zone B.
Septic systems (serves one single-family home)	R02	R02-1-3	B	Low		
Highways and roads, paved (cement or asphalt)	X20	X20-1-3	B	Low		

Table 6

*Contaminant Source Inventory and Risk Ranking for
Three Bears Retail Store #60
Sources of Synthetic Organic Chemicals*

PWSID 220118.001

<i>Contaminant Source Type</i>	<i>Contaminant Source ID</i>	<i>CS ID tag</i>	<i>Zone</i>	<i>Risk Ranking for Analysis</i>	<i>Map Number</i>	<i>Comments</i>
Injection wells (Class V) Large-Capacity Septic System (Drainfield Disposal Method)	D10	D10-1	A	Low		
Residential Areas	R01	R01-1-30	A	Low		30 acres in Zone A.
Injection wells (Class V) Large-Capacity Septic System (Drainfield Disposal Method)	D10	D10-2-3	B	Low		
Residential Areas	R01	R01-31-62	B	Low		32 acres in Zone B.
Septic systems (serves one single-family home)	R02	R02-1-3	B	Low		

Table 7

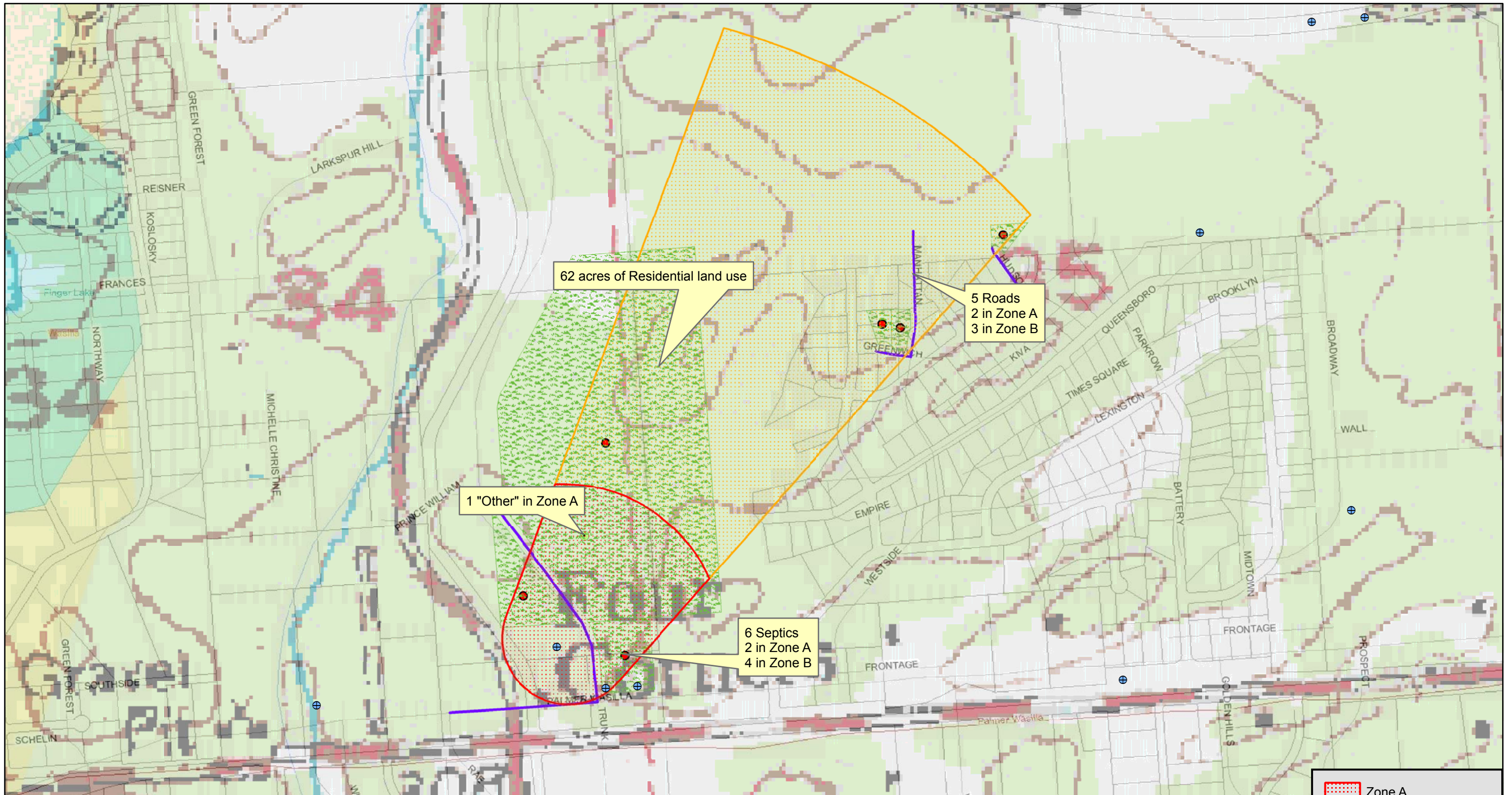
*Contaminant Source Inventory and Risk Ranking for
Three Bears Retail Store #60
Sources of Other Organic Chemicals*

PWSID 220118.001

Contaminant Source Type	Contaminant Source ID	CS ID tag	Zone	Risk Ranking for Analysis	Map Number	Comments
Injection wells (Class V) Large-Capacity Septic System (Drainfield Disposal Method)	D10	D10-1	A	Low		
Residential Areas	R01	R01-1-30	A	Low		30 acres in Zone A.
Highways and roads, paved (cement or asphalt)	X20	X20-4-5	A	Low		
Injection wells (Class V) Large-Capacity Septic System (Drainfield Disposal Method)	D10	D10-2-3	B	Low		
Residential Areas	R01	R01-31-62	B	Low		32 acres in Zone B.
Septic systems (serves one single-family home)	R02	R02-1-3	B	Low		
Highways and roads, paved (cement or asphalt)	X20	X20-1-3	B	Low		

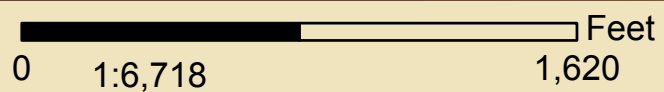
APPENDIX C

Three Bears #60 Drinking Water Protection Area and Potential and Existing Contaminant Sources (Map 2)



Map 2- Three Bears Potential Contaminants

PWSID: 220118.001



Data Sources:
 Kenai Borough: Roads and parcels
 Aerial Photo: USGS and Microsoft Terraserver
 Potential Sources of Contamination: ADEC

