



Source Water Assessment

A Hydrogeologic Susceptibility and
Vulnerability Assessment for
Wasilla Spruce Avenue Drinking Water
System,
Wasilla, Alaska
PWSID # 224646

DRINKING WATER PROTECTION PROGRAM REPORT #844

Alaska Department of Environmental Conservation

March 2003

Source Water Assessment for Wasilla Spruce Avenue Drinking Water System Wasilla, Alaska PWSID# 224646

DRINKING WATER PROTECTION PROGRAM REPORT 844

The Drinking Water Protection Program is producing Source Water Assessments in compliance with the Safe Drinking Water Act Amendments of 1996. Each assessment includes a delineation of the source water area, an inventory of potential and existing contaminant sources that may impact the water, a risk ranking for each of these contaminants, and an evaluation of the potential vulnerability of these drinking water sources.

These assessments are intended to provide public water systems owners/operators, communities, and local governments with the best available information that may be used to protect the quality of their drinking water. The assessments combine information obtained from various sources, including the U.S. Environmental Protection Agency, Alaska Department of Environmental Conservation (ADEC), public water system owners/operators, and other public information sources. The results of this assessment are subject to change if additional data becomes available. If you have any additional information that may affect the results of this assessment, please contact the Program Coordinator of DWPP, (907) 269-7521.

CONTENTS

	Page		Page
Executive Summary	1	Inventory of Potential and Existing	
Introduction	1	Contaminant Sources	3
Description of the Wasilla area, Alaska	1	Ranking of Contaminant Risks	4
Wasilla Spruce Avenue Public Drinking Water System	3	Vulnerability of Wasilla Spruce Avenue Drinking Water Source	4
Wasilla Spruce Avenue Protection Area	5	Summary	6
		References	7

TABLES

TABLE	1. Definition of Zones	3
	2. Susceptibility	4
	3. Contaminant Risks	5
	3. Overall Vulnerability	5

APPENDICES

APPENDIX	A. Wasilla Spruce Avenue Drinking Water Protection Area (Map 1)	
	B. Contaminant Source Inventory for Wasilla Spruce Avenue (Table 1)	
	Contaminant Source Inventory and Risk Ranking for Wasilla Spruce Avenue – Bacteria and Viruses (Table 2)	
	Contaminant Source Inventory and Risk Ranking for Wasilla Spruce Avenue – Nitrates/Nitrites (Table 3)	
	Contaminant Source Inventory and Risk Ranking for Wasilla Spruce Avenue – Volatile Organic Chemicals (Table 4)	
	Contaminant Source Inventory and Risk Ranking for Wasilla Spruce Avenue – Heavy Metals, Cyanide and Other Organic Chemicals (Table 5)	
	Contaminant Source Inventory and Risk Ranking for Wasilla Spruce Avenue – Synthetic Organic Chemicals (Table 6)	
	Contaminant Source Inventory and Risk Ranking for Wasilla Spruce Avenue – Other Organic Chemicals (Table 7)	
	C. Wasilla Spruce Avenue Drinking Water Protection Area and Potential and Existing Contaminant Sources (Map 2)	
	D. Vulnerability Analysis for Contaminant Source Inventory and Risk Ranking for Wasilla Spruce Avenue Public Drinking Water Source (Charts 1 – 14)	

Source Water Assessment for Wasilla Spruce Avenue Source of Public Drinking Water, Wasilla, Alaska

Drinking Water Protection Program Alaska Department of Environmental Conservation

EXECUTIVE SUMMARY

The public water system for Wasilla Spruce Avenue is a Class A (community) water system consisting of two wells in the Wasilla, Alaska area. The identified potential and current sources of contaminants for public drinking water sources include large capacity septic systems, roads, residential areas, residential septic systems and various commercial activities. These identified potential and existing sources of contamination are considered sources of bacteria and viruses, nitrates and/or nitrites, volatile organic chemicals, heavy metals, synthetic organic chemicals and other organic chemicals. Overall, the public water sources for Wasilla Spruce Avenue received a vulnerability rating of **Medium** for bacteria and viruses, nitrates, nitrites, volatile organic chemicals, heavy metals and **Low** for volatile organic chemicals, synthetic organic chemicals and other organic chemicals

INTRODUCTION

The Alaska Department of Environmental Conservation (ADEC) is completing source water assessments for all public drinking water sources in the State of Alaska. The purpose of this assessment is to provide public water system owners and/or operators, communities, and local governments with information they can use to preserve the quality of Alaska's public drinking water supplies. The results of this source water assessment can be used to decide where voluntary protection efforts are needed and feasible, and also what efforts will be most effective in reducing contaminant risks to your water system.

This source water assessment combines a review of the natural conditions at the site and the potential and existing contaminant risks. These are combined to determine the overall vulnerability of the drinking water source to contamination.

DESCRIPTION OF THE WASILLA AREA, ALASKA

Location

Wasilla is located near the center of the Matanuska-Susitna (Mat-Su) Borough in south central Alaska. The Mat-Su Borough encompasses approximately 23,000 square miles, including the majority of the drainage of the Susitna and Matanuska Rivers. Wasilla is located south of the Talkeetna Mountains, about 12 miles north of Knik Arm on Cook Inlet (Wickersham Alaska Corporation, 1986), (Matanuska-Susitna Borough/Fran Seager, 1991). Wasilla is 30 air miles north/northeast of Anchorage, adjacent to the Alaska Railroad main line and the George Parks Highway (ADNR, 1981).

Climate

The climate in Wasilla is transitional between the extremes of Interior Alaska and the wet conditions found along the coastal areas.

Wasilla is less than 15 miles from Knik Arm and about 75 miles from Prince William Sound. Summer temperatures are more moderate than those in the Interior due to the proximity to the coast. The Chugach and Talkeetna Mountains and the Alaska Range also protect Wasilla from the frigid cold of the Interior Alaska winter and act to break up strong storm fronts (Brabets, 1997), (Western Regional Climate Center, 2000).

Wasilla averages about 18 inches of precipitation per year, including about 59 inches of snowfall. Winter thaws can decrease snow cover to a few inches. Mean monthly high temperatures in Wasilla range from about 22 degrees in December and January to 69 degrees in July. The frost-free period in spring and summer averages 115 days, with the first frost usually arriving by September 1.

The record low for Wasilla was -50 degrees in January 1947. The highest recorded temperature was 90

degrees in 1969 (*Wickersham Alaska Corporation, 1986*).

Topography and Drainage

The Wasilla area topography varies from about 300 feet to 500 feet above sea level. The surrounding terrain gradually rises from south to north. The Wasilla area has hundreds of small lakes, several large lakes, and two substantial streams. At 387 acres, **Wasilla Lake** is one of the largest lakes in Southcentral Alaska (*Renshaw Consulting Engineers, 1983*).

The Cottonwood Creek drainage system, of which Wasilla Lake is part, begins northeast of Wasilla and discharges into Knik Arm about 15 miles to the south.

Cottonwood Creek is a popular salmon fishing stream (outside city limits), and has an average rate of flow of about 16 cubic feet per second near the outfall from Wasilla Lake.

At 362 acres, **Lake Lucille** is slightly smaller than Wasilla Lake. However, although within close proximity, they are part of two separate drainages and have significantly different characteristics. Lake Lucille is shallow with an average depth of five and a half feet. Its primary water source is springs in the lake bed. No significant creek leads into it and Lucille Creek is a low flow stream that drains it into Big Lake. Water circulation and flushing action through the lake is slow.

Although the quality can vary significantly in a short distance, groundwater supplies are abundant in the area. The Wasilla area has a central water system, and several subdivisions have private water systems. Many homes and businesses in the area, however, rely on individual wells for their water supply. Most of these wells are shallow with depths of less than 100 feet. Static water levels in many of these wells is around 30 feet below the surface. The coarse gravel underlying the Wasilla area provides a large aquifer even in the winter when infiltration is low (*Trainer, 1953*).

Geology and Soils

A lake covered the Susitna River valley lowland during glacial times. The deposition of glacial silts and clays played an important part in the make up of the soils of the area.

Most of the soils in the area provide good sources of sand, gravel and topsoil. The deposition of silt, clay and organic muck in old lakes and depressions means that some areas have soil conditions that vary over

relatively short distances. The U.S. Soil Conservation Service has mapped seven soil associations in and around Wasilla.

The Homestead and Knik soil types predominate the Wasilla area, with smaller areas of Coal Creek, Jacobsen, Salamatof, and Slikok soil types.

The **Homestead** series is common in the Wasilla area especially north of the Parks Highway from the west end of Lake Lucille. Homestead soils are shallow, well-drained silty soils over loose sand and gravel. They have formed on broad out wash plains and gravel moraines and run from nearly flat terrain to steep areas.

Homestead series is prevalent along Church Road north of the Parks Highway and throughout the Mission Hills subdivision.

The **Knik** series is the other major soil type in the area. It includes most of the downtown area, north and south of Lake Lucille and Wasilla Lake.

Knik soils are shallow, well-drained and silty, overlaying coarse, gravelly material, although scattered areas of poorly drained soils are also included. The soils are extensive over a broad range of slopes from flat to steep escarpments.

The **Coal Creek** series consists of dark-colored, poorly drained soils that formed in moderately deep silty material over compacted, fine-textured sediments. These soils occur in nearly level to gently sloping stream valleys, on the border of muskegs, and in small depressions. They are sometimes characterized by hillside seeps. This soil unit is found in small areas north and west of the downtown area.

The **Jacobsen** series is a very poorly drained, very stony silt loam found in broad depressions. The type is found west of Lake Lucille, south of the railroad, about even with Church Road.

The **Salamatof** and **Slikok** series are found within low areas and consist of poorly drained, peat, muck, and silty sediments in shallow depressions throughout the eastern side of the city. High water tables, often at or just below the surface, are characteristics of these soils. The banks of Cottonwood Creek south of Wasilla Lake have the greatest concentrations of these soils.

Finally, the **Wasilla** series consists of somewhat poorly drained soils with layers of sand and compacted finer material. They do not have the high organic content of the Slikok series. These soils are not extensive in the local area and are most commonly found southeast of

Lake Lucille along the Knik-Goose Bay Road (Wickersham Alaska Corporation, 1986).

WASILLA SPRUCE AVENUE PUBLIC DRINKING WATER SYSTEM

Wasilla Spruce Avenue is a Class A (community) water system. The system consists of two wells (Main and Back-Up) and are located at 17N R1W Section 3 Wasilla Woods Block 2 Lot 7 off of Spruce Avenue in the city of Wasilla, Alaska. (See Map 1 of Appendix A). This area is at an elevation of approximately 400 feet above sea level.

The two wells share have been assessed as one well due to their close proximity and similar depths.

According to the well log, the well is 239 feet deep and penetrates various layers of sand and gravel and a small confining layer at 200 feet. The well was drilled on 12/2/1995 and had a static water level of 115 feet. The Sanitary Survey (8/20/1998) indicates the well was installed with a cap providing a sanitary seal. A properly installed sanitary seal may provide protection against contaminants from entering the source waters at the well casing. The land surface is also appropriately sloped away from the well providing adequate surface water drainage and is grouted according to ADEC regulations. Proper grouting provides added protection against contaminants travelling along the well casing and into source waters.

This system operates year-round and serves 150 residents and 500 nonresidents through 176 service connections.

WASILLA SPRUCE AVENUE DRINKING WATER PROTECTION AREA

In order to evaluate whether a drinking water source is at risk, we must first evaluate what are the most likely pathways for surface contamination to reach the groundwater. Some areas are more likely to allow contamination to reach the well than others. These areas are determined by looking at the characteristics of the soil, groundwater, aquifer, and well.

The most probable area for contamination to reach the drinking water well is the area that contributes water to the well, the groundwater recharge area. This area is designated as the Drinking Water Protection Area (DWPA). Because releases of contaminants within the DWPA are most likely to impact the drinking water well, this area will serve as the focus for voluntary protection efforts. (Please refer to the Guidance Manual for Class A Public Water Systems for additional information).

The DWPA's established for wells by the ADEC are separated into four zones. These zones correspond to differences in the time-of-travel (TOT) of the water moving through the aquifer to the well. An analytical calculation was used to determine the size and shape of the DWPA. The input parameters describing the attributes of the aquifer in this calculation were obtained from the State of Alaska Department of Natural Resources (Joekela, Munter and Evans 1991), Freeze and Cherry 1979 and the DNR Well Tracking System (WELTS) database.

The time of travel for contaminants within the water varies and is dependent on the physical and chemical characteristics of each contaminant. The following is a summary of the four DWPA zones and the calculated time-of-travel for each:

Table 1. Definition of Zones

Zone	Definition
A	¼ the distance for the 2-yr. TOT
B	Less than the 2 year TOT
C	Less Than the 5 year TOT
D	Less than the 10 year TOT

As an example, water moving through the aquifer in Zone B will reach the well in less than 2 years from the time it crosses the outer limit of Zone B.

Zone A also incorporates the area down-gradient from the well to take into account the area of the aquifer that is influenced by pumping of the well. Water within the aquifer in Zone A will reach the well in several hours to several months.

The DWPA for Wasilla Spruce Avenue contains four zones: Zone A, Zone B, Zone C, and Zone D (see Map 1 in Appendix A).

INVENTORY OF POTENTIAL AND EXISTING CONTAMINANT SOURCES

The Drinking Water Protection Program has completed an inventory of potential and existing sources of contamination within the Wasilla Spruce Avenue as completed through a search of agency records and other publicly available information. Potential sources of contamination to the drinking water aquifer include a wide range of categories and types. Potential drinking water contaminants are found within agricultural, residential, commercial, and industrial areas, but can also occur within areas that have little or no development.

For the basis of all Class A public water system assessments, six categories of drinking water contaminants were inventoried. They include:

- Bacteria and viruses;
- Nitrates and/or nitrites;
- Volatile organic chemicals
- Heavy metals, cyanide, and other inorganic chemicals,
- Synthetic organic chemicals, and
- Other organic chemicals.

The sources are displayed on Maps 2 of Appendix C and summarized in Table 1 of Appendix B.

RANKING OF CONTAMINANT RISKS

Once the potential and existing sources of contamination have been identified, they are assigned a ranking according to what type and level of risk they represent. Ranking of contaminant risks for a “potential” or “existing” source of contamination is a function of toxicity and volumes of specific contaminants associated with that source.

Tables 2 through 7 in Appendix B contain the ranking of potential and existing sources of contamination with respect to bacteria and viruses, nitrates and/or nitrites, volatile organic chemicals, heavy metals, synthetic organic chemicals, and other organic chemicals.

VULNERABILITY OF WASILLA SPRUCE AVENUE DRINKING WATER SOURCE

Vulnerability of a drinking water source to contamination is a combination of two factors:

- Natural susceptibility; and
- Contaminant risks.

Each of the six categories of drinking water contaminants has been analyzed and an overall vulnerability score of 0 to 100 is ultimately assigned:

$$\begin{array}{r}
 \text{Natural Susceptibility (0 – 50 points)} \\
 + \\
 \text{Contaminant Risks (0 – 50 points)} \\
 = \\
 \text{Vulnerability of the} \\
 \text{Drinking Water Source to Contamination (0 – 100).}
 \end{array}$$

A score for the Natural Susceptibility is achieved by analyzing the properties of the well and the aquifer.

$$\begin{array}{r}
 \text{Susceptibility of the Wellhead (0 – 25 Points)} \\
 + \\
 \text{Susceptibility of the Aquifer (0 – 25 Points)} \\
 = \\
 \text{Natural Susceptibility (Susceptibility of the Well)} \\
 \text{(0 – 50 Points)}
 \end{array}$$

The wells for Wasilla Spruce Avenue appear to be completed in a semi-confined aquifer. The well logs in the area indicate the presence of discontinuous confining layers. Although confining layers in the area will provide protection from contaminants migrating downward, the discontinuity of the layers may provide a direct route for certain contaminants to enter the source water. In addition, wells within the protection are that are not properly grouted may also provide a direct route for contaminants to migrate downward.

Table 2 shows the Susceptibility scores and ratings for Wasilla Spruce Avenue .

Table 2. Susceptibility

	Score	Rating
Susceptibility of the Wellhead	0	Low
Susceptibility of the Aquifer	7	Low
Natural Susceptibility	7	Low

Contaminant risks to a drinking water source depend on the type, number or density, and distribution of contaminant sources. This data has been derived from an examination of existing and historical contamination that has been detected at the drinking water source through routine sampling. It also evaluates potential sources of contamination. Table 3 summarizes the Contaminant Risks for each category of drinking water contaminants.

Table 3. Contaminant Risks

Category	Score	Rating
Bacteria and Viruses	50	Very High
Nitrates and/or Nitrites	50	Very High
Volatile Organic Chemicals	26	Medium
Heavy Metals, Cyanide, and Other Inorganic Chemicals	40	Very High
Synthetic Organic Chemicals	25	Medium
Other Organic Chemicals	30	High

Appendix D contains fourteen charts, which together form the ‘Vulnerability Analysis’ for a source water assessment for a public drinking water source. Chart 1 analyzes the ‘Susceptibility of the Wellhead’ to contamination by looking at the construction of the well and its surrounding area. Chart 2 analyzes the ‘Susceptibility of the Aquifer’ to contamination by looking at the naturally occurring attributes of the water source and influences on the groundwater system that might lead to contamination. Chart 3 analyzes ‘Contaminant Risks’ for the drinking water source with respect to bacteria and viruses. The ‘Contaminant Risks’ portion of the analysis considers potential sources of contaminants as well as a review of contamination that has or may have occurred, but has not arrived or been detected at the well. Lastly, Chart 4 contains the ‘Vulnerability Analysis for Bacteria and Viruses’. Charts 5 through 14 contain the Contaminant Risks and Vulnerability Analyses for nitrates and nitrites, volatile organic chemicals, heavy metals, synthetic organic chemicals, and other organic chemicals, respectively.

Table 4 contains the overall vulnerability scores (0 – 100) and ratings for each of the six categories of drinking water contaminants. Note: scores are rounded off to the nearest five.

Table 4. Overall Vulnerability

Category	Score	Rating
Bacteria and Viruses	55	Medium
Nitrates and Nitrites	55	Medium
Volatile Organic Chemicals	30	Low
Heavy Metals, Cyanide and Other Inorganic Chemicals	45	Medium
Synthetic Organic Chemicals	30	Low
Other Organic Chemicals	35	Low

Bacteria and Viruses

The contaminant risk for bacteria and viruses is very high with large capacity septic systems, roads and residential area presenting risk to this source of drinking water well (See Chart 3 – Contaminant Risks for Bacteria and Viruses in Appendix D).

Recent sampling of the Wasilla Spruce Avenue wells shows no detection of Bacteria and Viruses. After combining the contaminant risk for bacteria and viruses with the natural susceptibility of the well, the overall vulnerability of the well to contamination is medium.

Nitrates and Nitrites

The contaminant risk for nitrates and nitrites is very high with large capacity septic systems, roads and residential areas presenting risk to this source of public drinking water (See Chart 5 - Contaminant Risks for Nitrates and/or Nitrites in Appendix D). Nitrates are very mobile, moving at approximately the same rate as water.

Sampling history of the Wasilla Spruce Avenue wells indicates that low concentrations of nitrate have been detected. On 12/30/02 0.586 mg/l of nitrate and/or nitrite was detected. This is 6% of the Maximum Contaminant Level (MCL) of 10mg/L. The MCL is the maximum level of contaminant that is allowed to exist in drinking water and still be consumed by humans. Nitrate concentrations in uncontaminated groundwater are typically less than 2 milligrams per liter (mg/L) and are derived primarily from the decomposition of organic matter in soils (Wang, Strelakos, Jokela, 2000). The levels detected in source waters are very low and are considered safe to drink.

After combining the contaminant risk for nitrates and nitrites with the natural susceptibility of the well, the overall vulnerability of the well to contamination is medium.

Volatile Organic Chemicals

The contaminant risk for volatile organic chemicals is high with large capacity septic systems, roads, residential area, construction trade areas, heavy equipment storage and paint sales presenting risk to the drinking water well (See Chart 7 – Contaminant Risks for Volatile Organic Chemicals in Appendix D).

Recent sampling history of Wasilla Spruce Avenue has detected very low levels of bromodichloro methane, chlorodibromo methane, methylene chlorobromide, chloroform and TTHM. All are byproducts of the disinfection process and did not originate in the source water. The levels detected were well below the MCL and considered safe. In addition, on one occasion very

low levels of xylene have been found (1% of the MCL). Further testing found no detection of xylene.

Xylene is a solvent found in gasoline and used in the manufacturing process. (EPA 2003) The source of the xylene is unknown.

After combining the contaminant risk for volatile organic chemicals with the natural susceptibility of the well, the overall vulnerability of the well to contamination is low.

Heavy Metals, Cyanide, and Other Inorganic Chemicals

The contaminant risk for heavy metals is very high with large capacity septic systems, residential area, construction areas, heavy equipment storage, paint sales, stone and clay processing, roads and existing contamination presenting risk to the source of drinking water. Recent sampling detected low levels of arsenic, beryllium (20% of the MCL) (See Chart 9 – Contaminant Risks for Heavy Metals, Cyanide, and Other Inorganic Chemicals in Appendix D).

According to the USEPA, “Arsenic occurs naturally in rocks and soil, water, air, and plants and animals. It can be further released into the environment through natural activities such as volcanic action, erosion of rocks, and forest fires, or through human actions.” (USEPA, 2002) “Beryllium is a metal found in natural deposits as ores containing other elements, and in some precious stones such as emeralds and aquamarine.” (USEPA, 2002)

The levels of arsenic and beryllium detected in the drinking water are at safe levels for human consumption.

After combining the contaminant risk for heavy metals, cyanide, and other inorganic chemicals with the natural susceptibility of the well, the overall vulnerability of the wells to heavy contamination is medium.

Synthetic Organic Chemicals

The contaminant risk for synthetic organic chemicals is medium with large capacity septic systems, residential and paint sales presenting risk to the source water.

Review of the historical sampling data indicates that the Wasilla Spruce Avenue has an SOC Waiver and has not sampled for synthetic organic chemicals. (See Chart 11– Contaminant Risks for Synthetic Organic Chemicals.)

After combining the contaminant risk with the natural susceptibility of the wells, the overall vulnerability of the wells to synthetic organic chemicals is low.

Other Organic Chemicals

The contaminant risk for other organic chemicals is high with large capacity septic systems, roads, construction/trade area, heavy equipment storage and residential areas representing risk to the source water. Review of the historical sampling data indicates that the Wasilla Spruce Avenue wells have an OOC Waiver and has not sampled for other organic chemicals. (See Chart 13 – Contaminant Risks for Synthetic Organic Chemicals in Appendix D).

After combining the contaminant risk with the natural susceptibility of the wells, the overall vulnerability of the wells to other organic chemicals is low

SUMMARY

A *Source Water Assessment* has been completed for the sources of public drinking water serving Wasilla Spruce Avenue wells. Overall, the public water source for the wells received a vulnerability rating of **Medium** for bacteria and viruses, nitrates and nitrites, heavy metals and **Low** for volatile organic chemicals, synthetic organic chemicals and other organic chemicals

This assessment of contaminant risks can be used as a foundation for local voluntary protection efforts and for the continuous efforts on the part of Wasilla Spruce Avenue to protect public health. It is anticipated that *Source Water Assessments* will be updated every five years to reflect any changes in the vulnerability and/or susceptibility of Wasilla Spruce Avenue drinking water sources.

REFERENCES

- Alaska Department of Natural Resources, 1981, Scenic Resources along the Parks Highway, Anchorage, AK
- Alaska Department of Natural Resources Well Log Tracking System (WELTS). [WWW document] <http://info.dec.state.ak.us/welts/default.asp#WLS>
- Alaska Department of Transportation and Public Facilities, 1990, Parks Highway Reconnaissance Report, Anchorage, AK.
- Alaska Department of Transportation and Public Facilities, 1992, Wasilla-Fishhook Road Environmental Assessment, Anchorage, AK.
- Brabets, T., 1997, Precipitation map of Alaska, Web extension to the U.S. Geological Survey Water Resources for Alaska GIS datasets. <URL:<http://agdc.usgs.gov/data/usgs/water>> .
- Dearborn, L.L., and Alleley, R.D., 1983, Water-well data for the Big Lake area, Anchorage C8-SW Quadrangle, Alaska; Division of Geological and Geophysical Surveys Report of Investigations 83-19, State of Alaska Department of Natural Resources, Fairbanks, AK.
- Freeze, R. A. and J. A. Cherry. 1979. Groundwater. Prentice Hall, Inc
- Jakola, J.B., Munter, J.A., and Evans, J.G., 1991, Ground-water resources of the Palmer-Big Lake area, Alaska: a conceptual model. Division of Geological and Geophysical Surveys Report of Investigations 90-4, State of Alaska Department of Natural Resources, Fairbanks, AK.
- LaSage, D.M., 1992, Ground-water resources of the Palmer area, Alaska, Division of geological and Geophysical Surveys Report of Investigations 92-3, State of Alaska Department of Natural Resources, Fairbanks, AK.
- Matanuska-Susitna Borough/Fran Seager, 1991, Major Coal Towns of the Matanuska Valley: A Pictorial History, Palmer, AK.
- Matanuska-Susitna Borough, 1985, Knik-Matanuska-Sisitna: A Visual History of the Valleys, Wasilla, AK.
- Maynard, D.L., 1987, Water-well data from the Houston area, Matanuska-Susitna Borough, Alaska, Division of Geological and Geophysical Surveys Report of Investigations 87-17, 14p., State of Alaska Department of Natural Resources, Fairbanks, AK.
- Renshaw Consulting Engineers, 1983, Summary of Mineral Resources, Palmer, AK.
- Trainer, F.W., 1953, Preliminary report on the geology and groundwater resources of the Matanuska Valley agricultural area, Alaska, USGS Water Supply Paper 1494, U.S. Printing Office, Washington, D.C.
- U.S. Environmental Protection Agency, 2002, Consumer Factsheet on Xylene. Retrieved in March 2003. [WWW document] URL <http://www.epa.gov/OGWDW/dwh/c-voc/xylenes.html>
- U.S. Environmental Protection Agency, 2002, Consumer Factsheet Drinking Water Standards on Arsenic. Retrieved in March 2003. [WWW document] URL http://www.epa.gov/OGWDW/ars/ars_rule_factsheet.html
- U.S. Environmental Protection Agency, 2002, Consumer Factsheet on Beryllium. Retrieved in March 2003. [WWW document] URL http://www.epa.gov/OGWDW/contaminants/dw_contamfs/berylliu.html
- Western Regional Climate Center, 2000, August 24, Web extension to the *Western Regional Climate Center* [WWW document]. URL http://www.uaa.alaska.edu/enri/ascc_web/ascc_home.html .
- Wickersham Alaska Corporation, 1986, Wasilla Comprehensive Plan, Anchorage, AK.

Winkler, G.R., 1992, Geologic map and summary geochronology of the Anchorage 1° x 3° quadrangle, Southern Alaska, US Geological Survey MAP I-2283, U.S. Government Printing Office, Washington D.C.

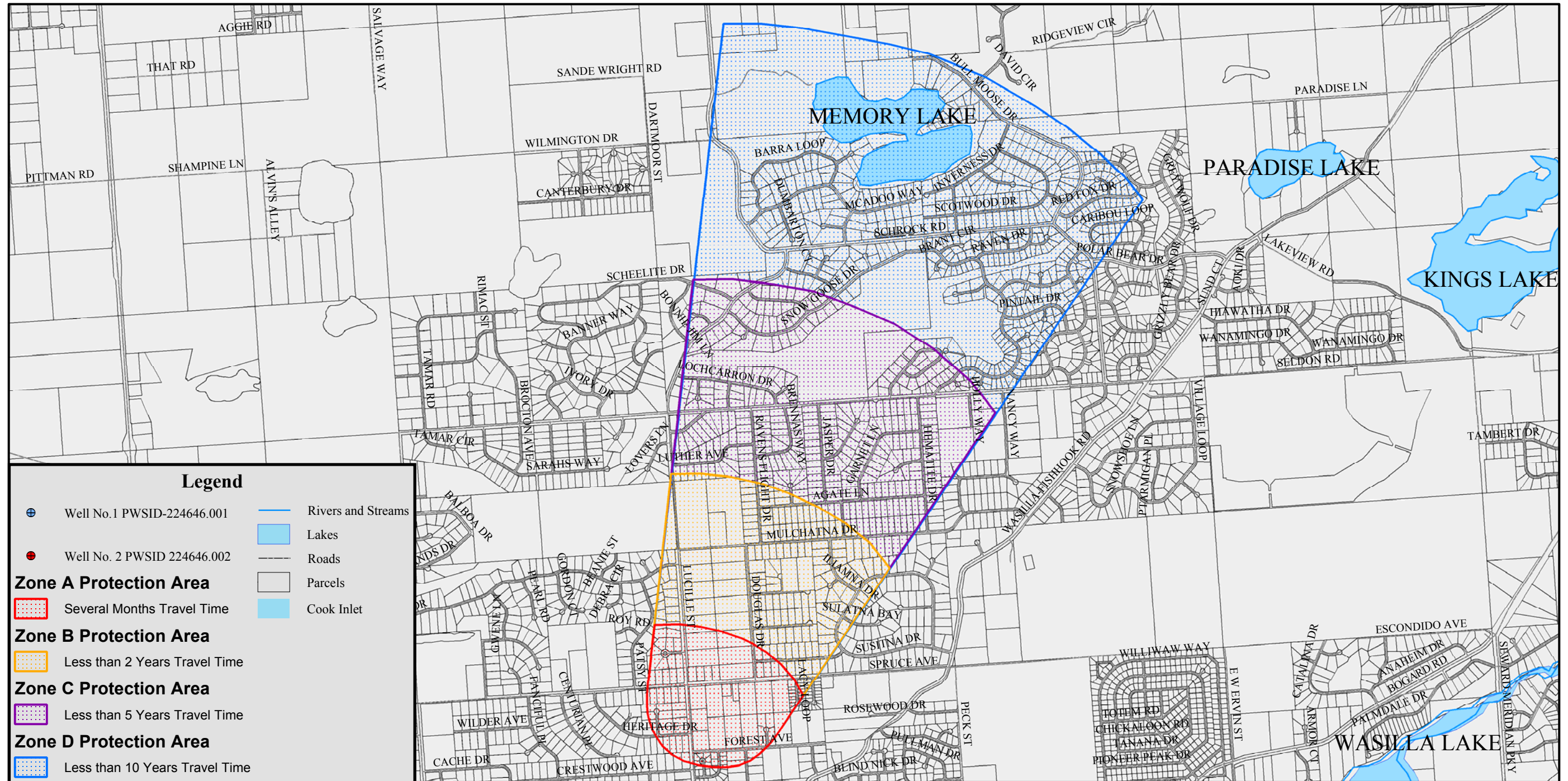
ACKNOWLEDGMENT

Source Water Assessments in the Wasilla area were jointly prepared by ADEC, Drinking Water Protection Program and URS Corporation. The Drinking Water Protection Program would like to thank URS Corporation for their efforts in researching the Wasilla area.

APPENDIX A

Wasilla Spruce Avenue Well #1 Drinking Water Protection Area Location Map (Map 1)

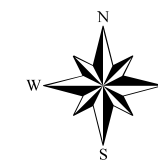
Drinking Water Protection Area for Wasilla-Spruce Avenue Main



0 2,000 4,000 6,000 8,000 Feet 1:25,226

Data Sources:
Parcels, lakes and streams- Matanuska Susitna Borough
Contaminant Sources and Drinking Water Protection Area - ADEC

PWSID: 224646.001 and 224646.002



Map 1



APPENDIX B

Contaminant Source Inventory and Risk Ranking for Wasilla Spruce Avenue Well #1 (Tables 1-7)

Table 1

**Contaminant Source Inventory for
Wasilla - Spruce Ave. Main**

PWSID 224646.002

Contaminant Source Type	Contaminant Source ID	CS ID tag	Zone	Map Number	Comments
Injection wells (Class V) Large-Capacity Septic System (Drainfield Disposal Method)	D10	D10-1-15	A	2	Zone A has 15 large capacity septic systems
Residential Areas	R01	R01-1	A	2	Residential area in Zone A
Highways and roads, paved (cement or asphalt)	X20	X20-1-10	A	2	10 roads in Zone A
Injection wells (Class V) Large-Capacity Septic System (Drainfield Disposal Method)	D10	D10-16-32	B	2	Zone B has 17 large capacity septic systems
Residential Areas	R01	R01-2	B	2	Residential area in Zone A
Highways and roads, paved (cement or asphalt)	X20	X20-11-18	B	2	8 roads in Zone B
Construction trade areas and materials	C09	C09-02	C	3	330 LUTHER AVE
Heavy equipment rental/storage	C18	C18-2	C	3	905 ONYX CIR
Paint sales /service	C32	C32-1	C	3	2851 QUARTZ CIR
Injection wells (Class V) Large-Capacity Septic System (Drainfield Disposal Method)	D10	D10-33-35	C	3	Zone C has 3 large capacity septic systems
Stone and clay processing/manufacturing	I43	I43-1	C	3	3175 Old Squaw Loop
Residential Areas	R01	R01-3	C	3	Residential area in Zone A
Highways and roads, paved (cement or asphalt)	X20	X2019-37	C	3	18 roads in Zone C

Table 2

*Contaminant Source Inventory and Risk Ranking for
Wasilla - Spruce Ave. Main
Sources of Bacteria and Viruses*

PWSID 224646.002

<i>Contaminant Source Type</i>	<i>Contaminant Source ID</i>	<i>CS ID tag</i>	<i>Zone</i>	<i>Risk Ranking for Analysis</i>	<i>Map Number</i>	<i>Comments</i>
Injection wells (Class V) Large-Capacity Septic System (Drainfield Disposal Method)	D10	D10-1-15	A	High	2	Zone A has 15 large capacity septic systems
Residential Areas	R01	R01-1	A	Low	2	Residential area in Zone A
Highways and roads, paved (cement or asphalt)	X20	X20-1-10	A	Low	2	10 roads in Zone A
Injection wells (Class V) Large-Capacity Septic System (Drainfield Disposal Method)	D10	D10-16-32	B	High	2	Zone B has 17 large capacity septic systems
Residential Areas	R01	R01-2	B	Low	2	Residential area in Zone A
Highways and roads, paved (cement or asphalt)	X20	X20-11-18	B	Low	2	8 roads in Zone B
Injection wells (Class V) Large-Capacity Septic System (Drainfield Disposal Method)	D10	D10-33-35	C	High	3	Zone C has 3 large capacity septic systems
Highways and roads, paved (cement or asphalt)	X20	X2019-37	C	Low	3	18 roads in Zone C

Table 3

*Contaminant Source Inventory and Risk Ranking for
Wasilla - Spruce Ave. Main
Sources of Nitrates/Nitrites*

PWSID 224646.002

<i>Contaminant Source Type</i>	<i>Contaminant Source ID</i>	<i>CS ID tag</i>	<i>Zone</i>	<i>Risk Ranking for Analysis</i>	<i>Map Number</i>	<i>Comments</i>
Injection wells (Class V) Large-Capacity Septic System (Drainfield Disposal Method)	D10	D10-1-15	A	High	2	Zone A has 15 large capacity septic systems
Residential Areas	R01	R01-1	A	Low	2	Residential area in Zone A
Highways and roads, paved (cement or asphalt)	X20	X20-1-10	A	Low	2	10 roads in Zone A
Injection wells (Class V) Large-Capacity Septic System (Drainfield Disposal Method)	D10	D10-16-32	B	High	2	Zone B has 17 large capacity septic systems
Residential Areas	R01	R01-2	B	Low	2	Residential area in Zone A
Highways and roads, paved (cement or asphalt)	X20	X20-11-18	B	Low	2	8 roads in Zone B
Injection wells (Class V) Large-Capacity Septic System (Drainfield Disposal Method)	D10	D10-33-35	C	High	3	Zone C has 3 large capacity septic systems
Highways and roads, paved (cement or asphalt)	X20	X2019-37	C	Low	3	18 roads in Zone C

Table 4

Contaminant Source Inventory and Risk Ranking for
Wasilla - Spruce Ave. Main
Sources of Volatile Organic Chemicals

PWSID 224646.002

<i>Contaminant Source Type</i>	<i>Contaminant Source ID</i>	<i>CS ID tag</i>	<i>Zone</i>	<i>Risk Ranking for Analysis</i>	<i>Map Number</i>	<i>Comments</i>
Injection wells (Class V) Large-Capacity Septic System (Drainfield Disposal Method)	D10	D10-1-15	A	Low	2	Zone A has 15 large capacity septic systems
Residential Areas	R01	R01-1	A	Low	2	Residential area in Zone A
Highways and roads, paved (cement or asphalt)	X20	X20-1-10	A	Low	2	10 roads in Zone A
Injection wells (Class V) Large-Capacity Septic System (Drainfield Disposal Method)	D10	D10-16-32	B	Low	2	Zone B has 17 large capacity septic systems
Residential Areas	R01	R01-2	B	Low	2	Residential area in Zone A
Highways and roads, paved (cement or asphalt)	X20	X20-11-18	B	Low	2	8 roads in Zone B
Construction trade areas and materials	C09	C09-02	C	Low	3	330 LUTHER AVE
Heavy equipment rental/storage	C18	C18-2	C	Medium	3	905 ONYX CIR
Paint sales /service	C32	C32-1	C	Medium	3	2851 QUARTZ CIR
Injection wells (Class V) Large-Capacity Septic System (Drainfield Disposal Method)	D10	D10-33-35	C	Low	3	Zone C has 3 large capacity septic systems
Highways and roads, paved (cement or asphalt)	X20	X2019-37	C	Low	3	18 roads in Zone C

Table 5

*Contaminant Source Inventory and Risk Ranking for
Wasilla - Spruce Ave. Main
Sources of Heavy Metals, Cyanide and Other Inorganic Chemicals*

PWSID 224646.002

<i>Contaminant Source Type</i>	<i>Contaminant Source ID</i>	<i>CS ID tag</i>	<i>Zone</i>	<i>Risk Ranking for Analysis</i>	<i>Map Number</i>	<i>Comments</i>
Injection wells (Class V) Large-Capacity Septic System (Drainfield Disposal Method)	D10	D10-1-15	A	Low	2	Zone A has 15 large capacity septic systems
Residential Areas	R01	R01-1	A	Low	2	Residential area in Zone A
Highways and roads, paved (cement or asphalt)	X20	X20-1-10	A	Low	2	10 roads in Zone A
Injection wells (Class V) Large-Capacity Septic System (Drainfield Disposal Method)	D10	D10-16-32	B	Low	2	Zone B has 17 large capacity septic systems
Residential Areas	R01	R01-2	B	Low	2	Residential area in Zone A
Highways and roads, paved (cement or asphalt)	X20	X20-11-18	B	Low	2	8 roads in Zone B
Construction trade areas and materials	C09	C09-02	C	Low	3	330 LUTHER AVE
Heavy equipment rental/storage	C18	C18-2	C	Low	3	905 ONYX CIR
Paint sales /service	C32	C32-1	C	Low	3	2851 QUARTZ CIR
Injection wells (Class V) Large-Capacity Septic System (Drainfield Disposal Method)	D10	D10-33-35	C	Low	3	Zone C has 3 large capacity septic systems
Stone and clay processing/manufacturing	I43	I43-1	C	Medium	3	3175 Old Squaw Loop
Highways and roads, paved (cement or asphalt)	X20	X2019-37	C	Low	3	18 roads in Zone C

Table 6

*Contaminant Source Inventory and Risk Ranking for
Wasilla - Spruce Ave. Main
Sources of Synthetic Organic Chemicals*

PWSID 224646.002

<i>Contaminant Source Type</i>	<i>Contaminant Source ID</i>	<i>CS ID tag</i>	<i>Zone</i>	<i>Risk Ranking for Analysis</i>	<i>Map Number</i>	<i>Comments</i>
Injection wells (Class V) Large-Capacity Septic System (Drainfield Disposal Method)	D10	D10-1-15	A	Low	2	Zone A has 15 large capacity septic systems
Residential Areas	R01	R01-1	A	Low	2	Residential area in Zone A
Injection wells (Class V) Large-Capacity Septic System (Drainfield Disposal Method)	D10	D10-16-32	B	Low	2	Zone B has 17 large capacity septic systems
Residential Areas	R01	R01-2	B	Low	2	Residential area in Zone A
Paint sales /service	C32	C32-1	C	Low	3	2851 QUARTZ CIR
Injection wells (Class V) Large-Capacity Septic System (Drainfield Disposal Method)	D10	D10-33-35	C	Low	3	Zone C has 3 large capacity septic systems

Table 7

*Contaminant Source Inventory and Risk Ranking for
Wasilla - Spruce Ave. Main
Sources of Other Organic Chemicals*

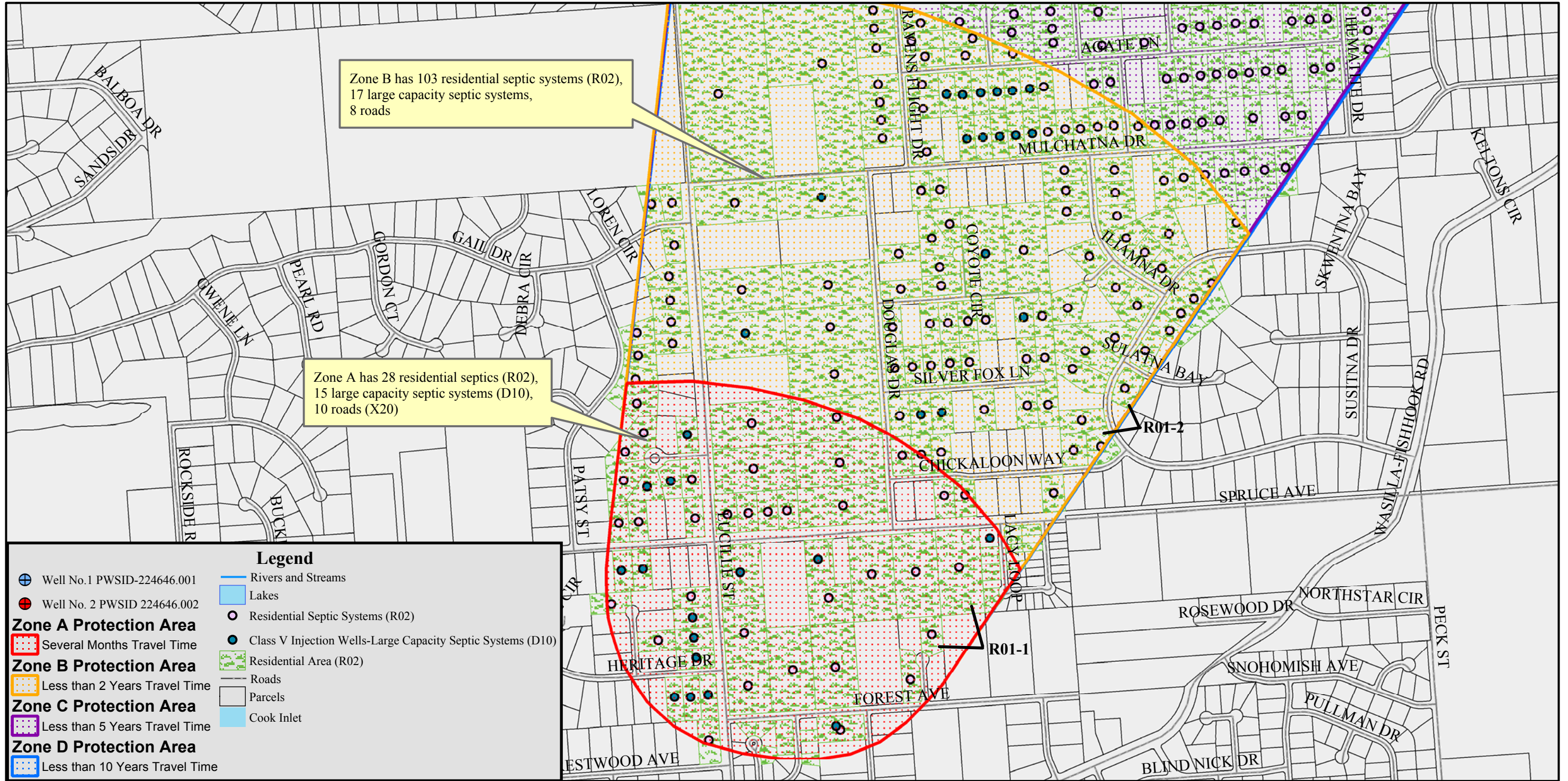
PWSID 224646.002

<i>Contaminant Source Type</i>	<i>Contaminant Source ID</i>	<i>CS ID tag</i>	<i>Zone</i>	<i>Risk Ranking for Analysis</i>	<i>Map Number</i>	<i>Comments</i>
Injection wells (Class V) Large-Capacity Septic System (Drainfield Disposal Method)	D10	D10-1-15	A	Low	2	Zone A has 15 large capacity septic systems
Residential Areas	R01	R01-1	A	Low	2	Residential area in Zone A
Highways and roads, paved (cement or asphalt)	X20	X20-1-10	A	Low	2	10 roads in Zone A
Injection wells (Class V) Large-Capacity Septic System (Drainfield Disposal Method)	D10	D10-16-32	B	Low	2	Zone B has 17 large capacity septic systems
Residential Areas	R01	R01-2	B	Low	2	Residential area in Zone A
Highways and roads, paved (cement or asphalt)	X20	X20-11-18	B	Low	2	8 roads in Zone B
Construction trade areas and materials	C09	C09-02	C	Low	3	330 LUTHER AVE
Heavy equipment rental/storage	C18	C18-2	C	Medium	3	905 ONYX CIR
Injection wells (Class V) Large-Capacity Septic System (Drainfield Disposal Method)	D10	D10-33-35	C	Low	3	Zone C has 3 large capacity septic systems
Highways and roads, paved (cement or asphalt)	X20	X2019-37	C	Low	3	18 roads in Zone C

APPENDIX C

Wasilla Spruce Avenue Well #1 Drinking Water Protection Area and Potential and Existing Contaminant Sources (Map 2-3)

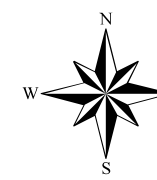
Drinking Water Protection Area for Wasilla-Spruce Avenue Main



0 1,200 2,400 3,600 4,800 Feet 1:9,028

Data Sources:
 Parcels, lakes and streams- Matanuska Susitna Borough
 Contaminant Sources and Drinking Water Protection Area - ADEC

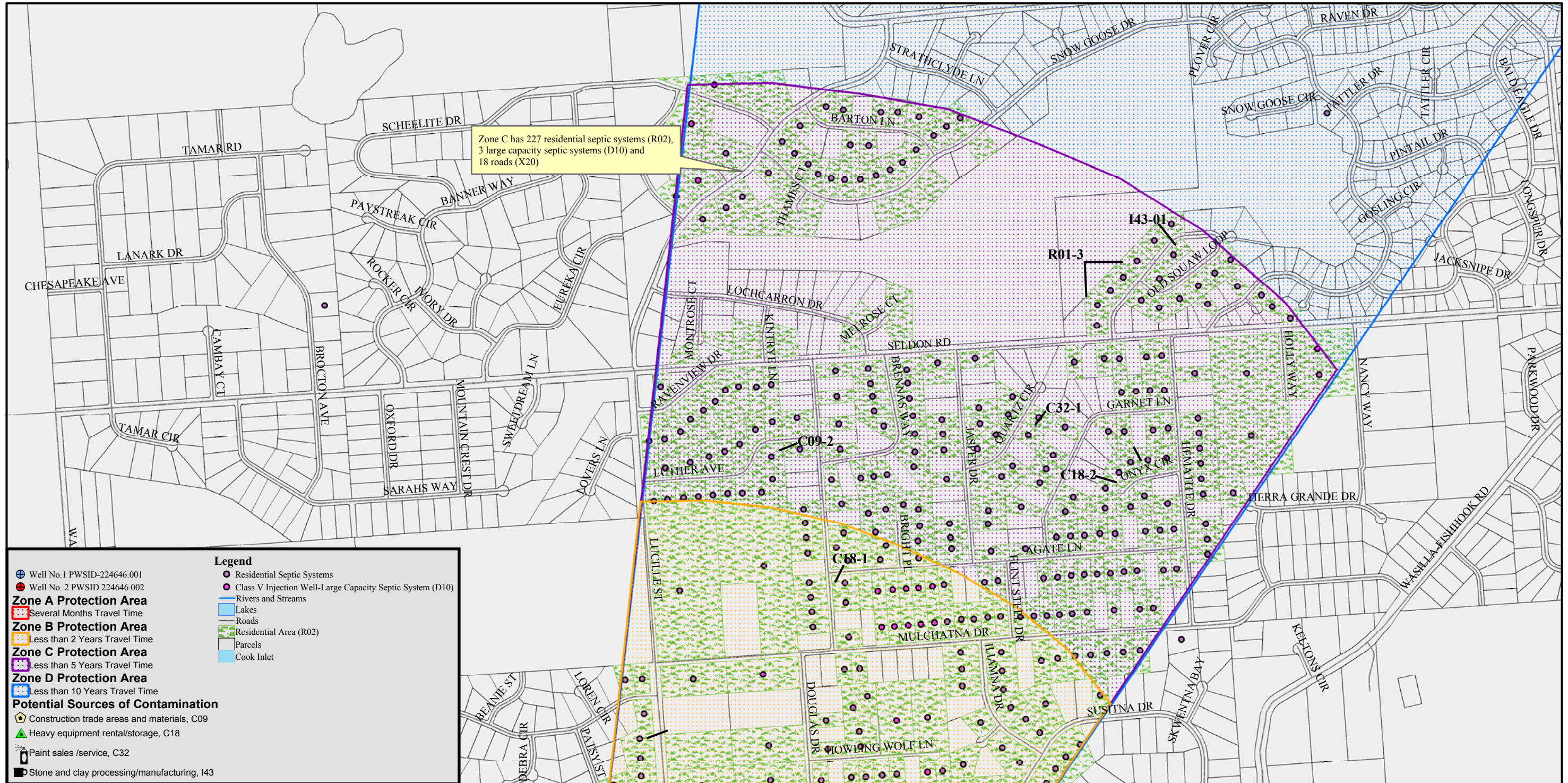
PWSID: 224646.001 and 224646.002



Map 2



Drinking Water Protection Area for Wasilla-Spruce Avenue Main



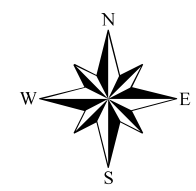
Legend

- Well No. 1 PWSID-224646.001
- Well No. 2 PWSID 224646.002
- Zone A Protection Area** Several Months Travel Time
- Zone B Protection Area** Less than 2 Years Travel Time
- Zone C Protection Area** Less than 5 Years Travel Time
- Zone D Protection Area** Less than 10 Years Travel Time
- Potential Sources of Contamination**
 - Construction trade areas and materials, C09
 - Heavy equipment rental/storage, C18
 - Paint sales /service, C32
 - Stone and clay processing/manufacturing, 143
- Residential Septic Systems
- Class V Injection Well-Large Capacity Septic System (D10)
- Rivers and Streams
- Lakes
- Roads
- Residential Area (R02)
- Parcels
- Cook Inlet



1:11,141

PWSID: 224646.001 and 224646.002



Map 3



Data Sources:
 Parcels, lakes and streams- Matanuska Susitna Borough
 Contaminant Sources and Drinking Water Protection Area - ADEC

APPENDIX D

Vulnerability Analysis for Wasilla Spruce Avenue Well #1 Public Drinking Water Source (Charts 1-14)

Chart 1. Susceptibility of the wellhead - Wasilla Spruce Ave. Main and Back-up

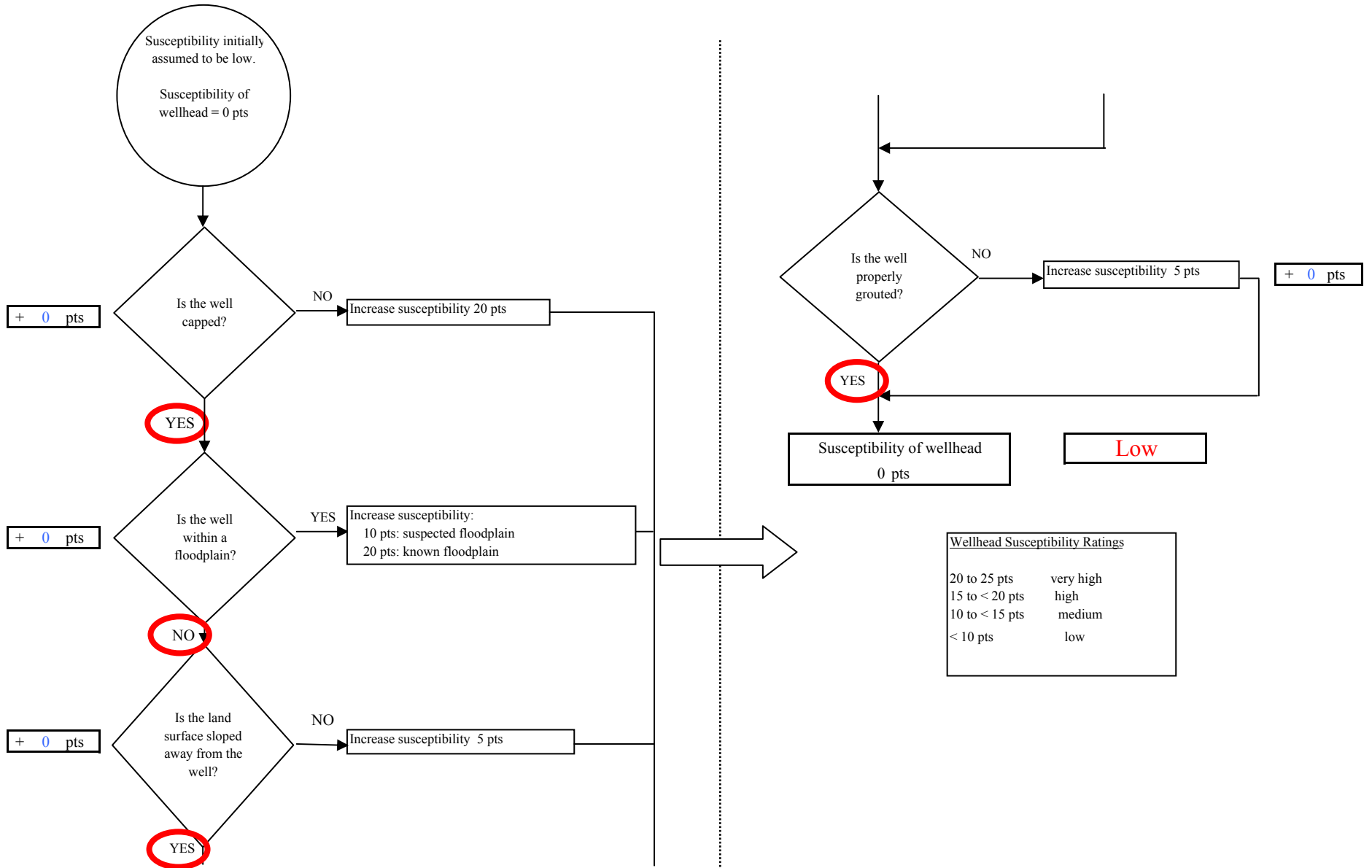


Chart 2. Susceptibility of the aquifer - Wasilla Spruce Ave. Main and Back-up

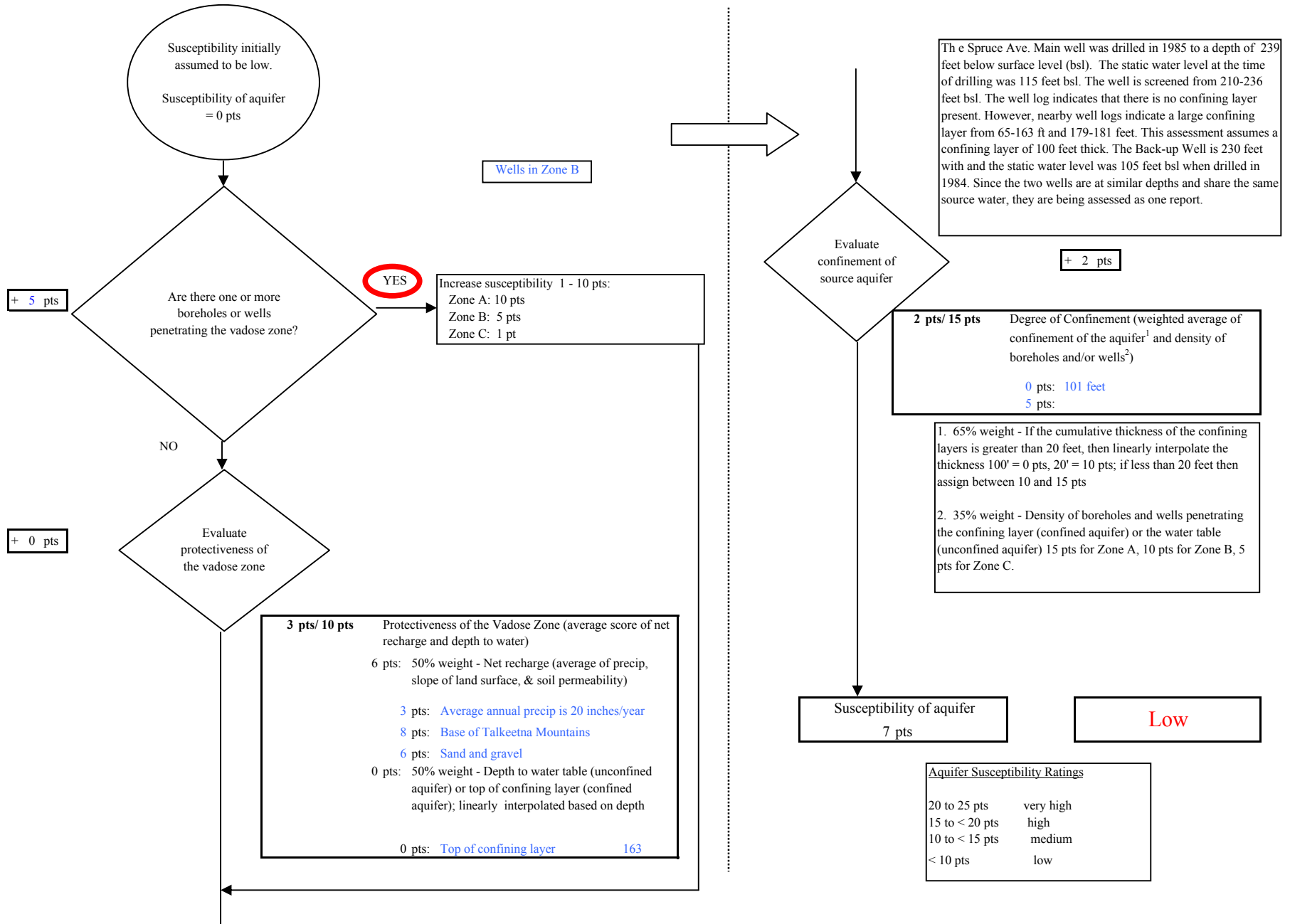


Chart 3. Contaminant risks for Wasilla Spruce Ave. Main and Back-up - Bacteria & Viruses

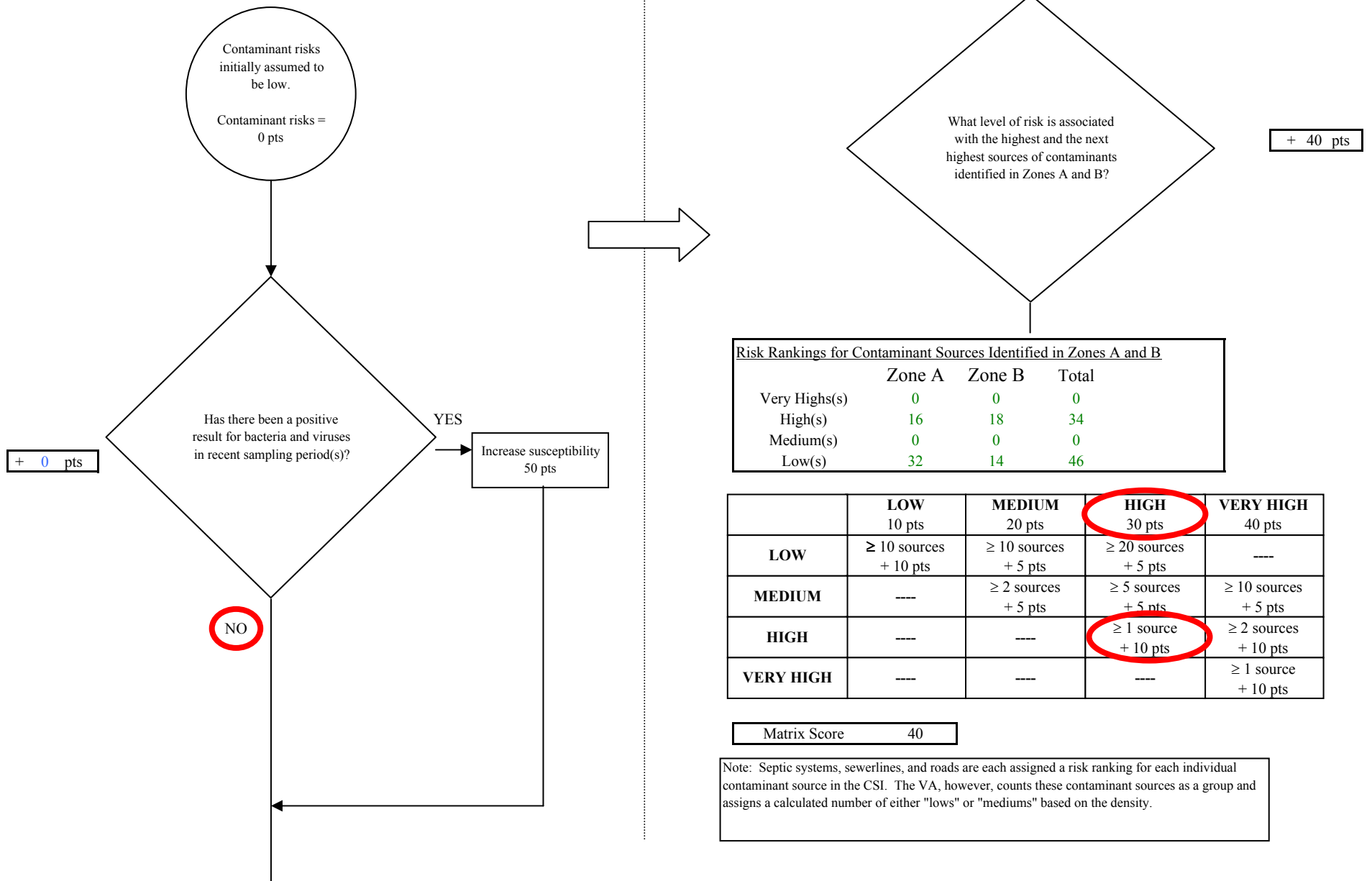
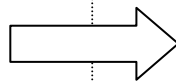
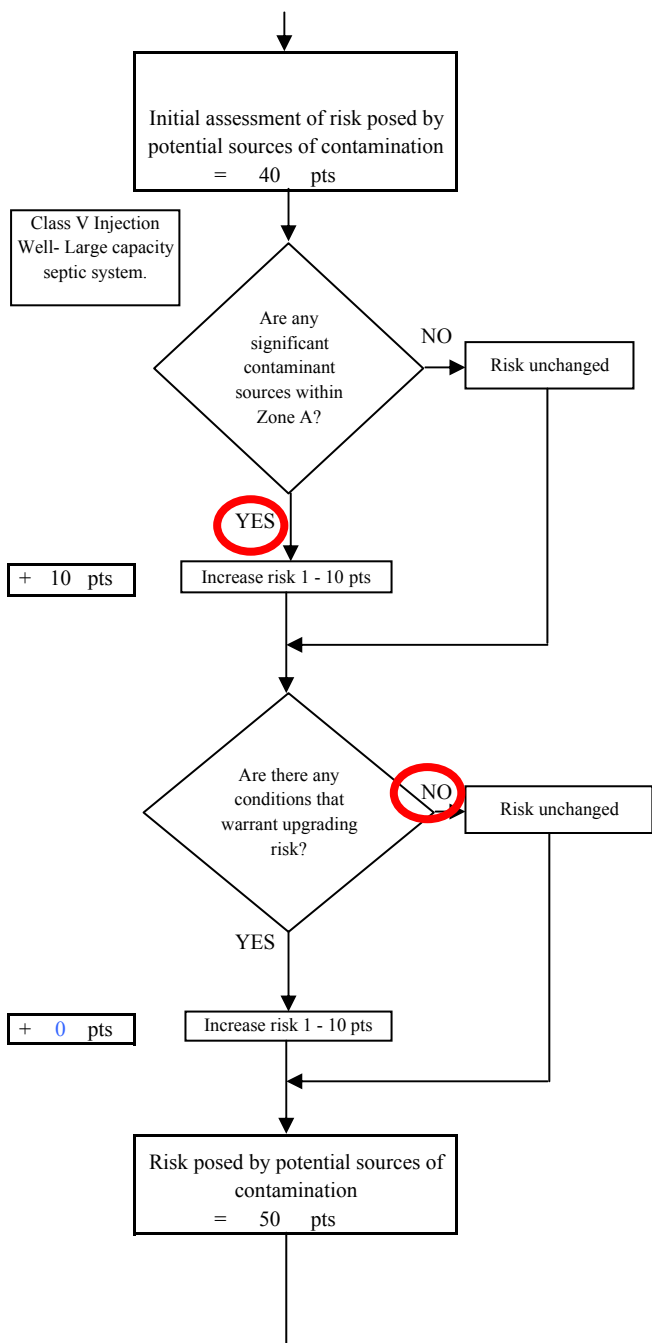
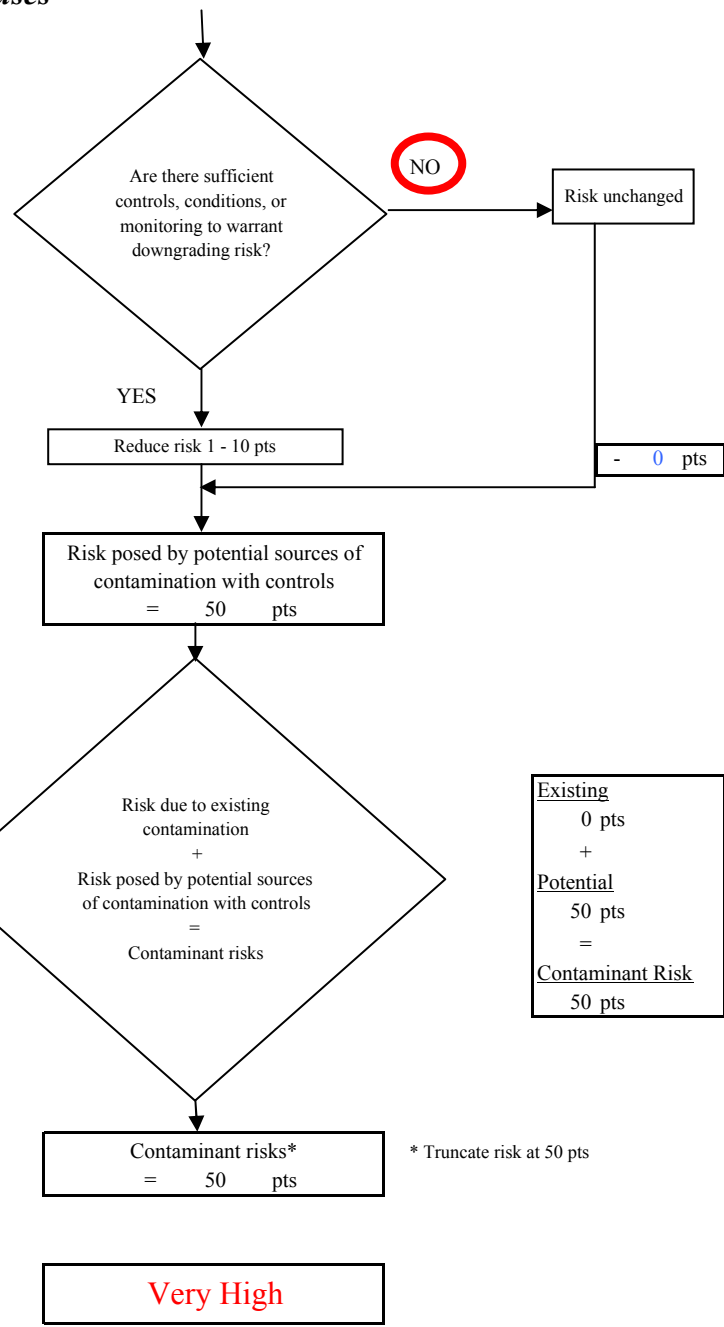


Chart 3. Contaminant risks for Wasilla Spruce Ave. Main and Back-up - Bacteria & Viruses



Contaminant Risk Ratings	
40 to 50 pts	very high
30 to < 40 pts	high
20 to < 30 pts	medium
< 20 pts	low



<u>Existing</u>	0 pts
+	
<u>Potential</u>	50 pts
=	
<u>Contaminant Risk</u>	50 pts

* Truncate risk at 50 pts

Chart 4. Vulnerability analysis for Wasilla Spruce Ave. Main and Back-up - Bacteria & Viruses

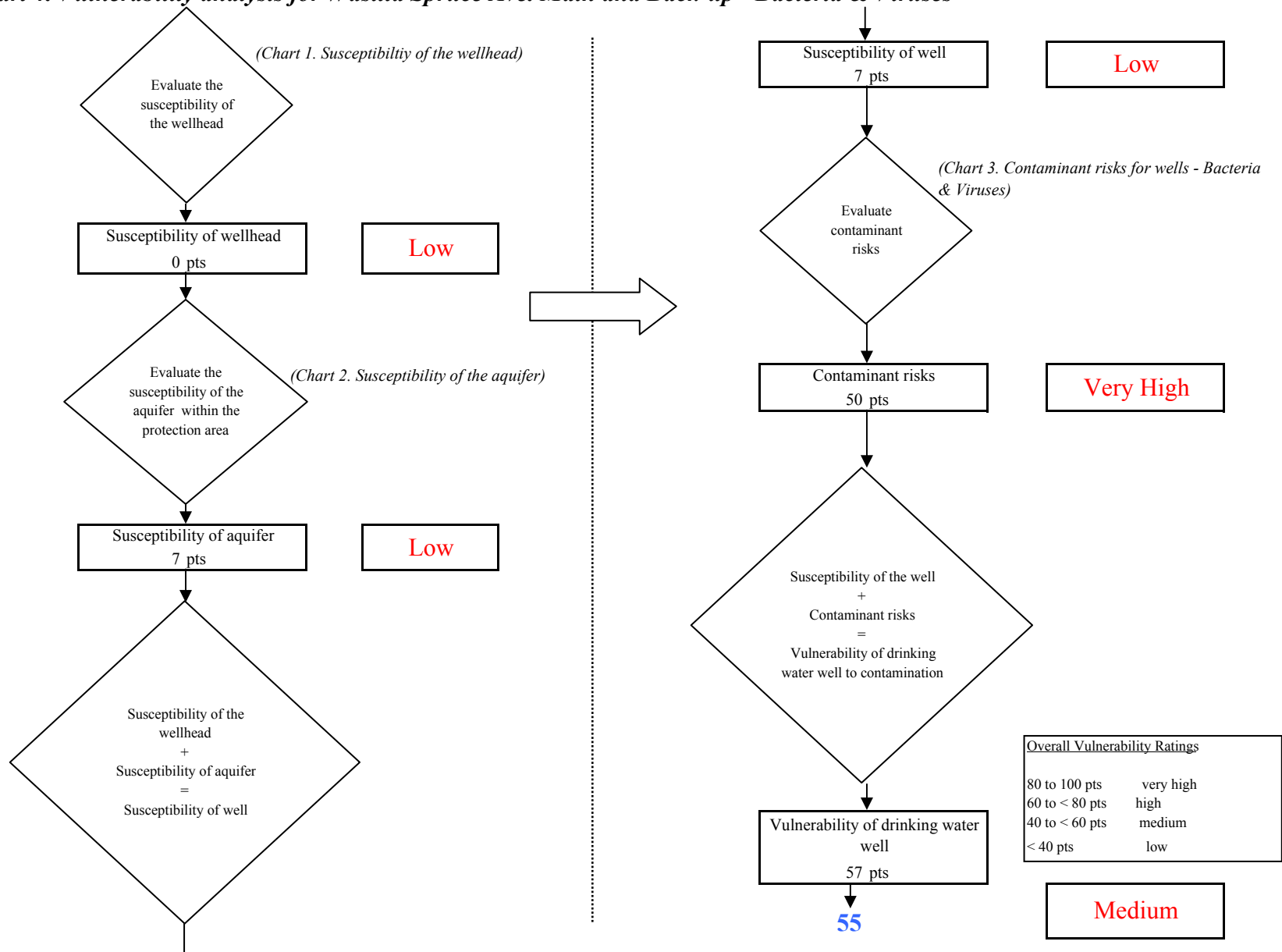


Chart 5. Contaminant risks for Wasilla Spruce Ave. Main and Back-up - Nitrates and Nitrites

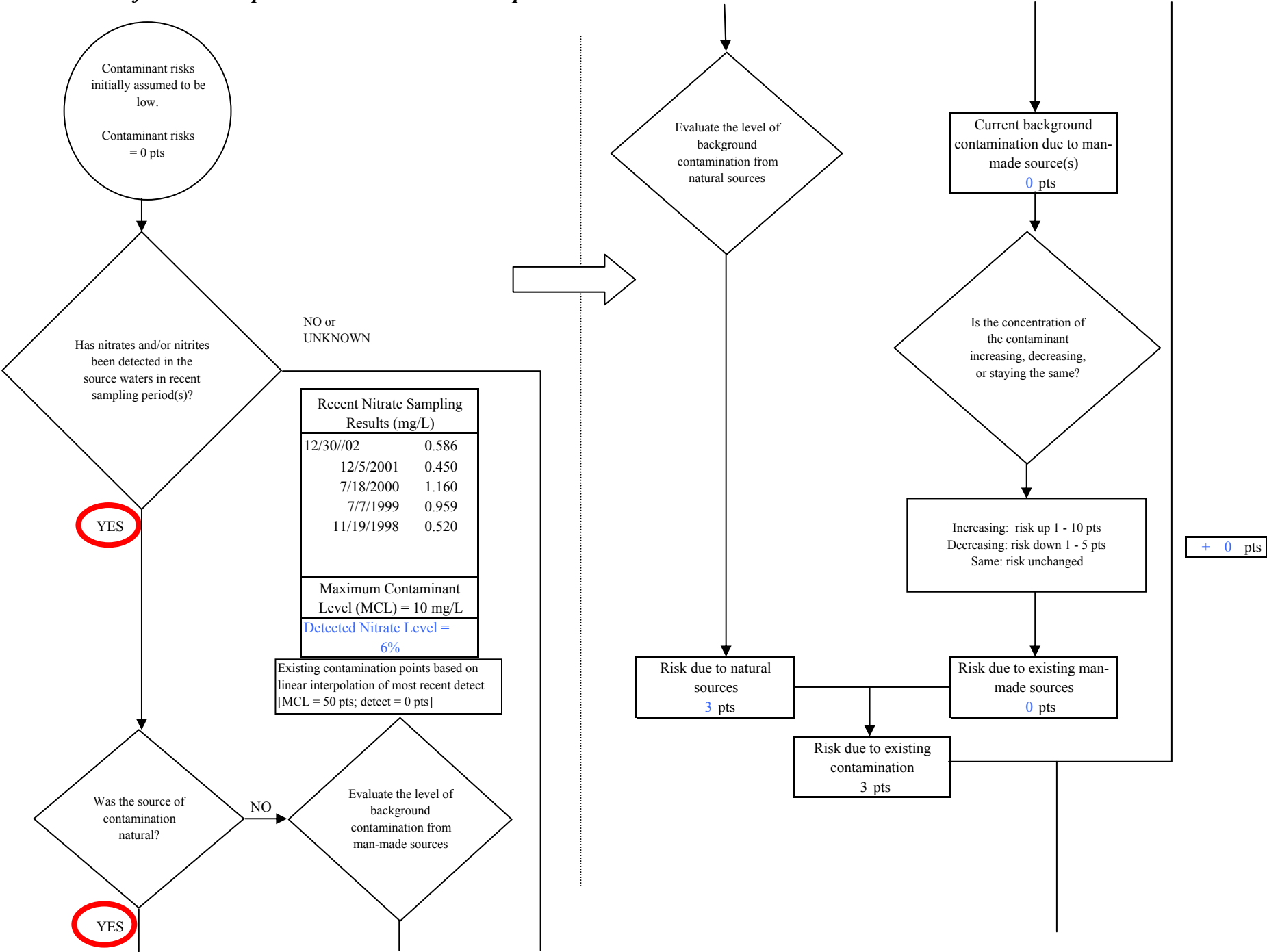
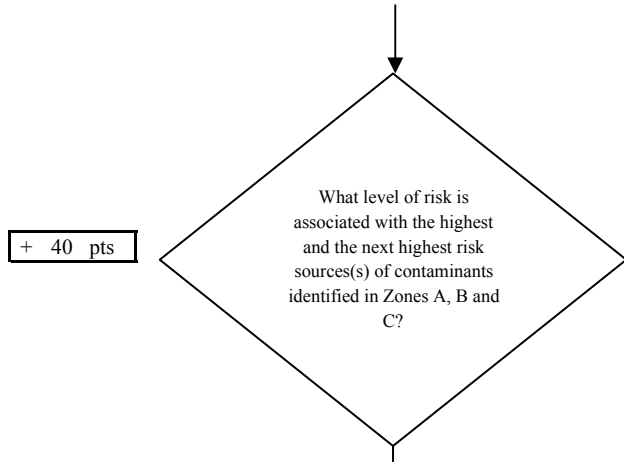


Chart 5. Contaminant risks for Wasilla Spruce Ave. Main and Back-up - Nitrates and Nitrites



Risk Levels for Contaminant Sources identified in Zones A, B and C			
	Zone A	Zones B&C	Total
Very Highs(s)	0	0	0
High(s)	16	19	35
Medium(s)	0	0	0
Low(s)	32	38	70

	LOW 10 pts	MEDIUM 20 pts	HIGH 30 pts	VERY HIGH 40 pts
LOW	≥ 10 sources + 10 pts	≥ 10 sources + 5 pts	≥ 20 sources + 5 pts	----
MEDIUM	----	≥ 2 sources + 5 pts	≥ 5 sources + 5 pts	≥ 10 sources + 5 pts
HIGH	----	----	≥ 1 source + 10 pts	≥ 2 sources + 10 pts
VERY HIGH	----	----	----	≥ 1 source + 10 pts

Matrix Score 40

Note: Septic systems, sewerlines, and roads are each assigned a risk ranking for each individual contaminant source in the CSI. The VA, however, counts these contaminant sources as a group and assigns a calculated number of either "lows" or "mediums" based on the density.

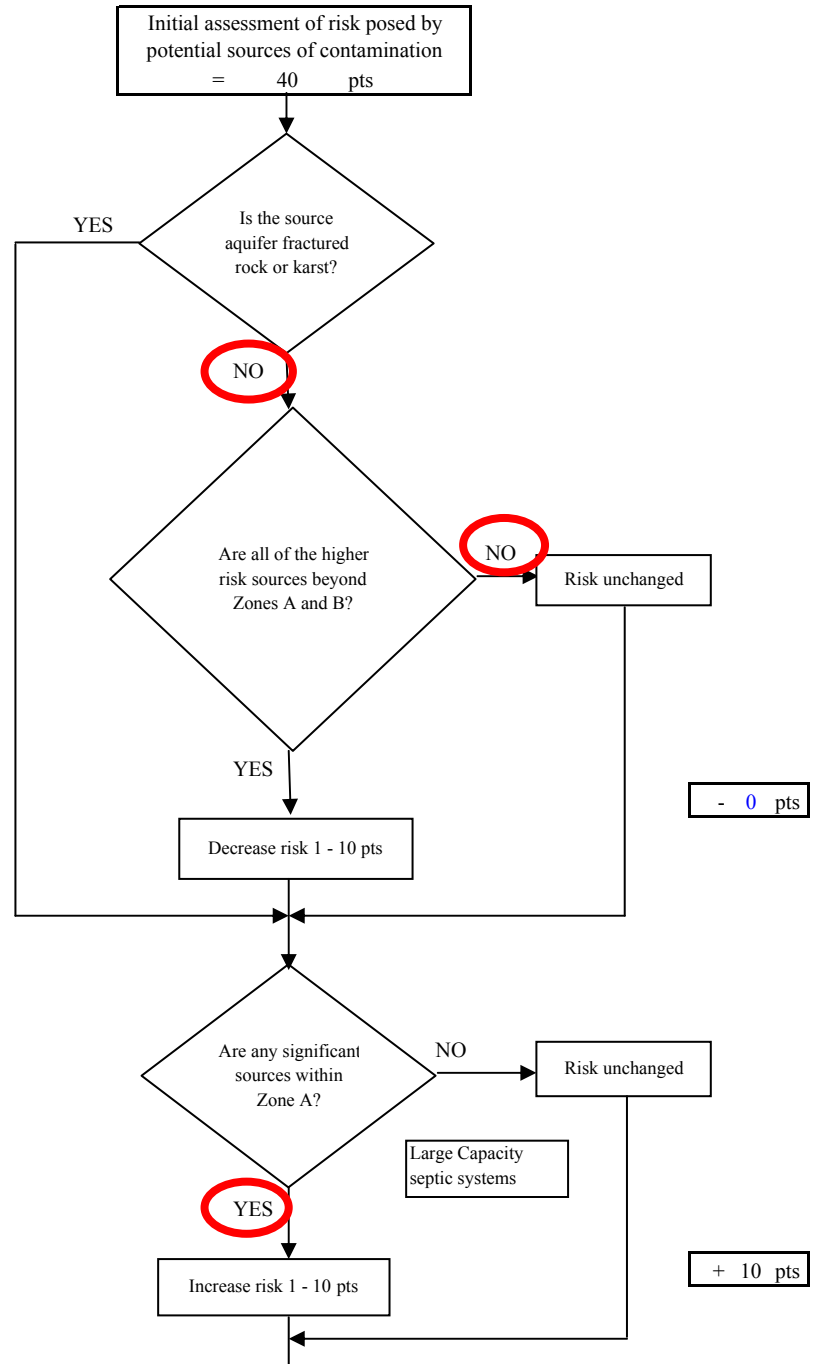
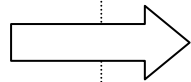


Chart 5. Contaminant risks for Wasilla Spruce Ave. Main and Back-up - Nitrates and Nitrites

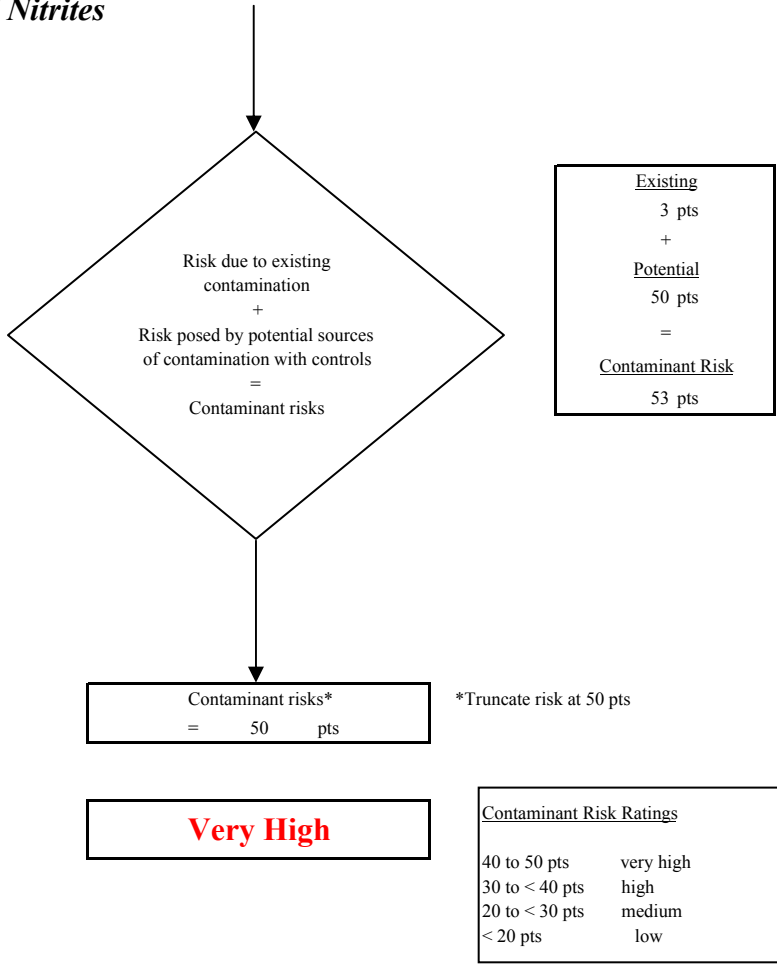
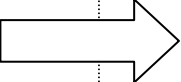
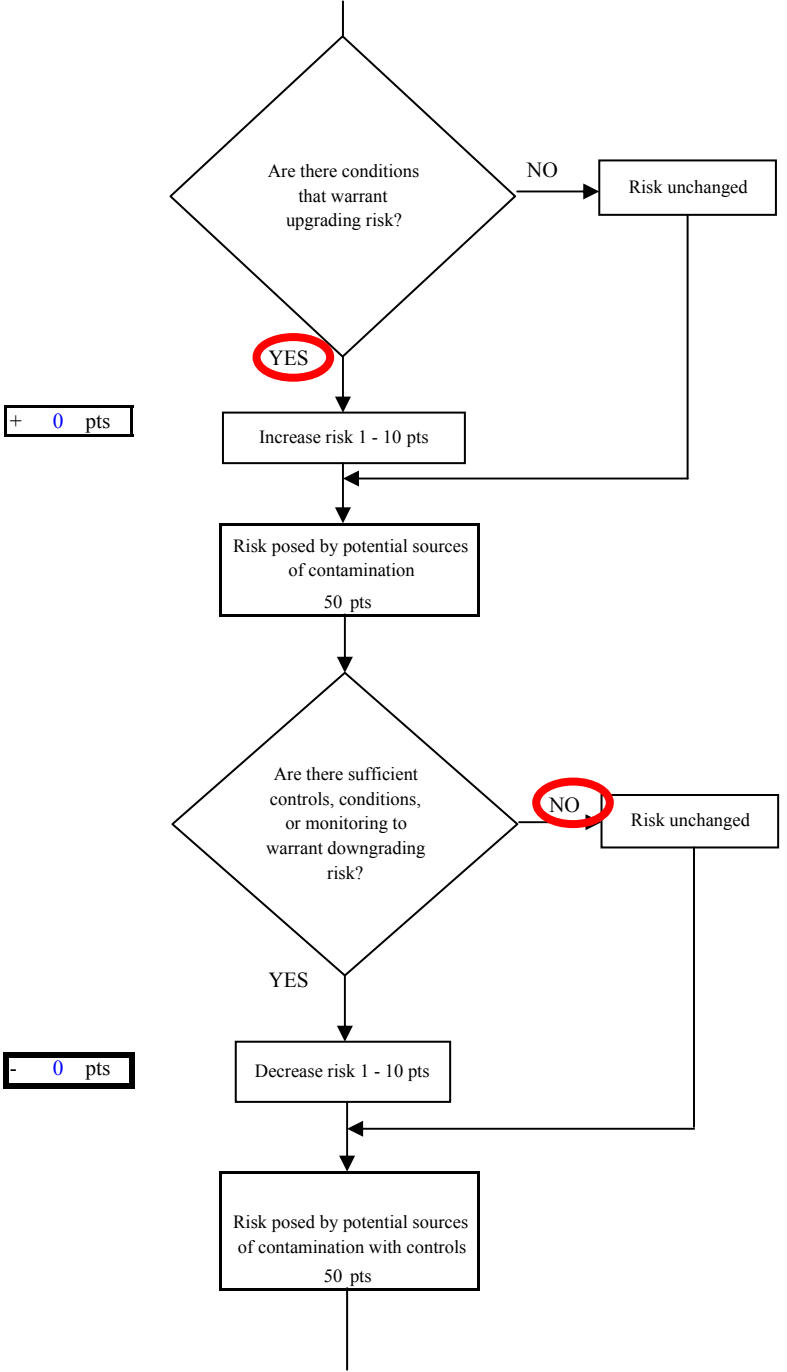


Chart 6. Vulnerability analysis for Wasilla Spruce Ave. Main and Back-up - Nitrates and Nitrites

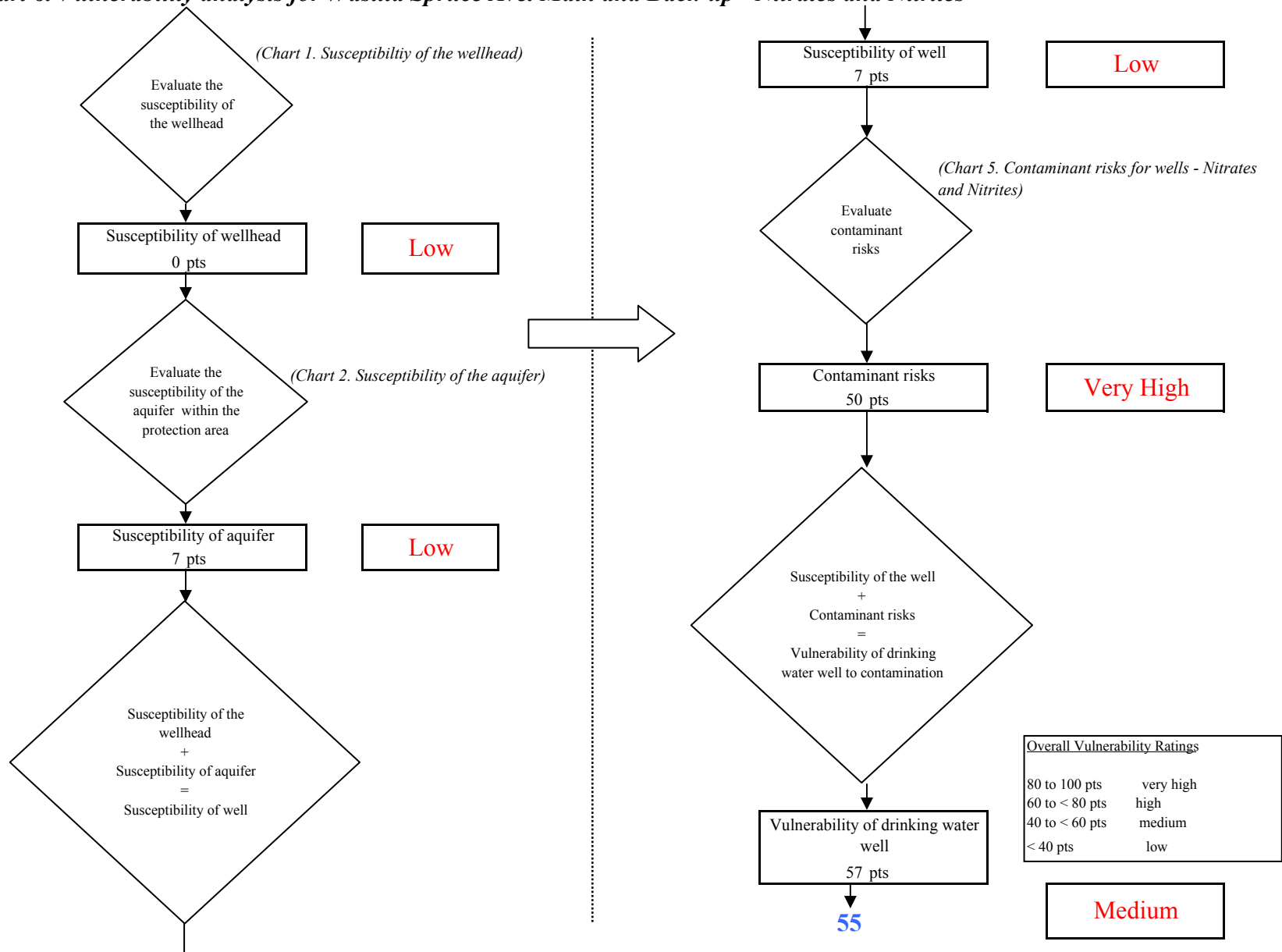


Chart 7. Contaminant risks for Wasilla Spruce Ave. Main and Back-up - Volatile Organic Chemicals

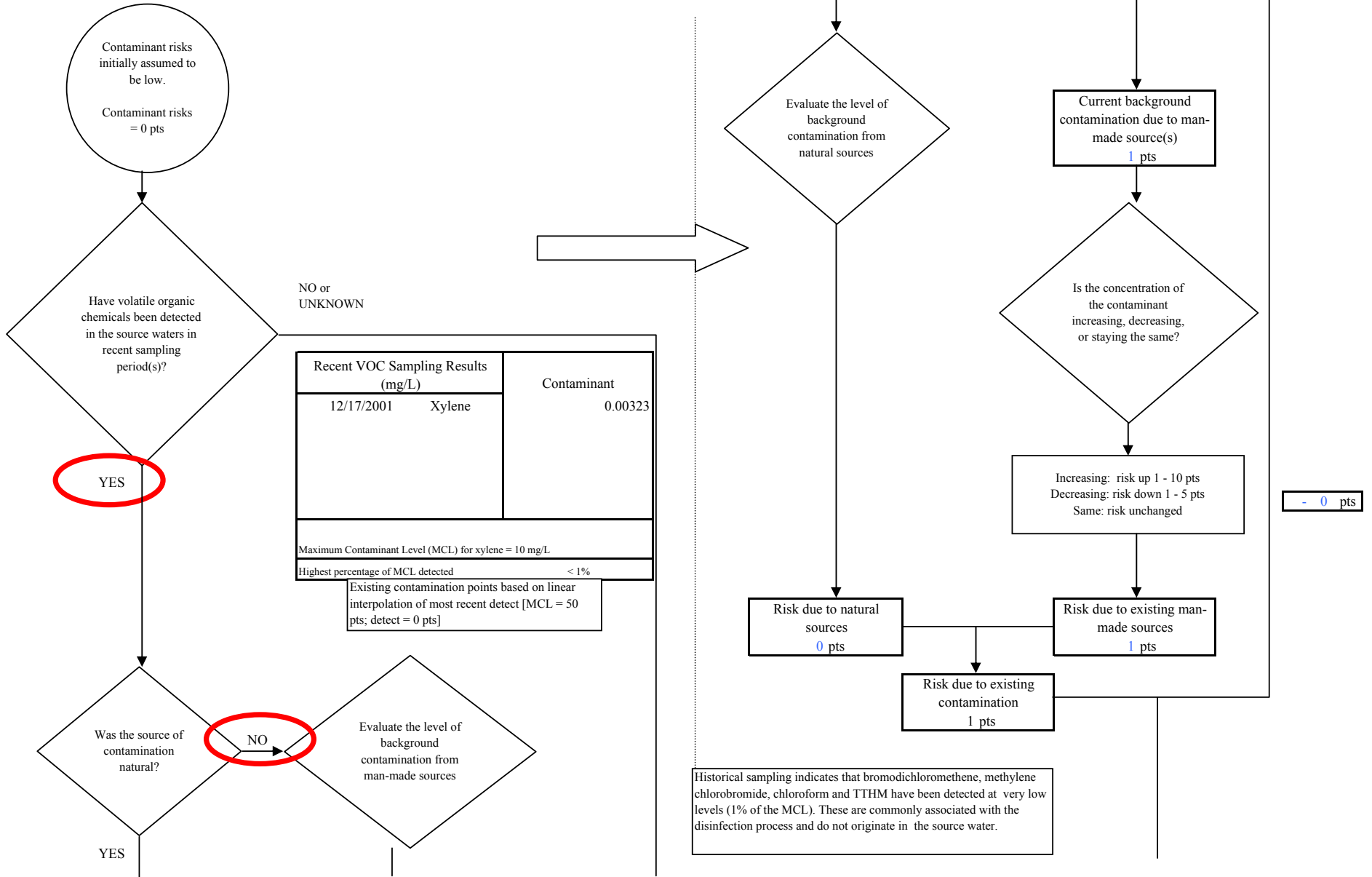


Chart 7. Contaminant risks for Wasilla Spruce Ave. Main and Back-up - Volatile Organic Chemicals

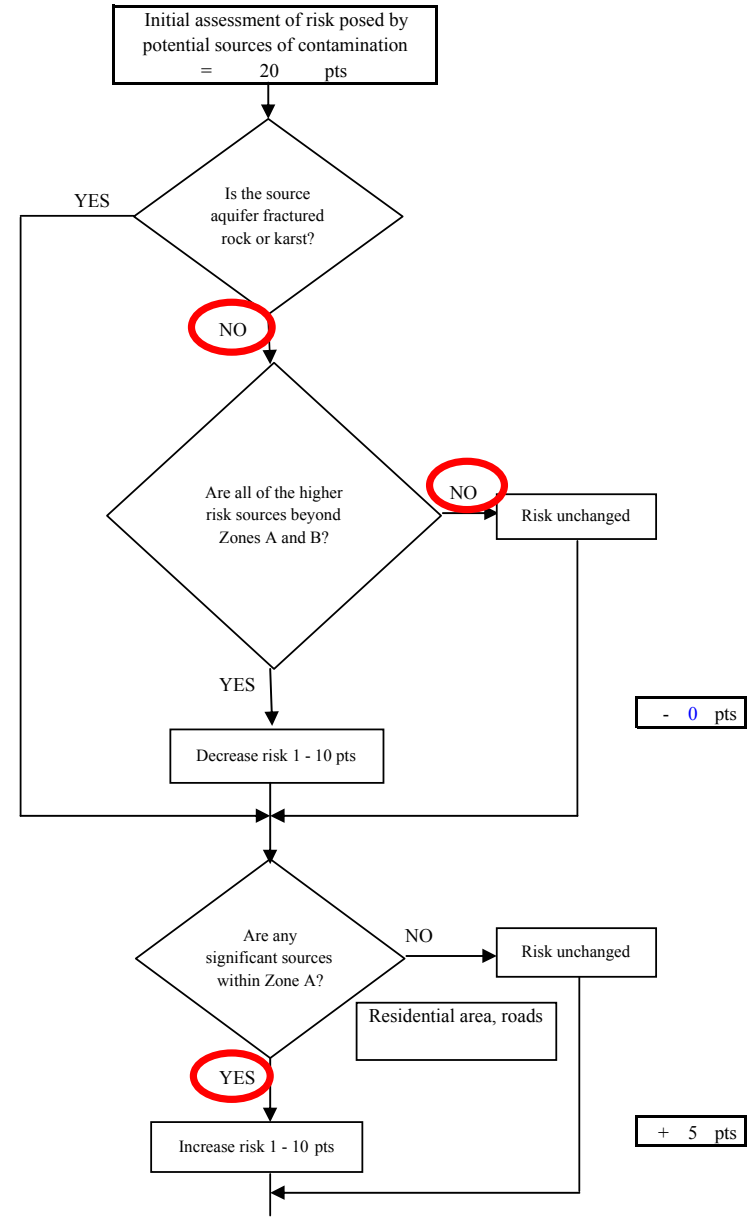
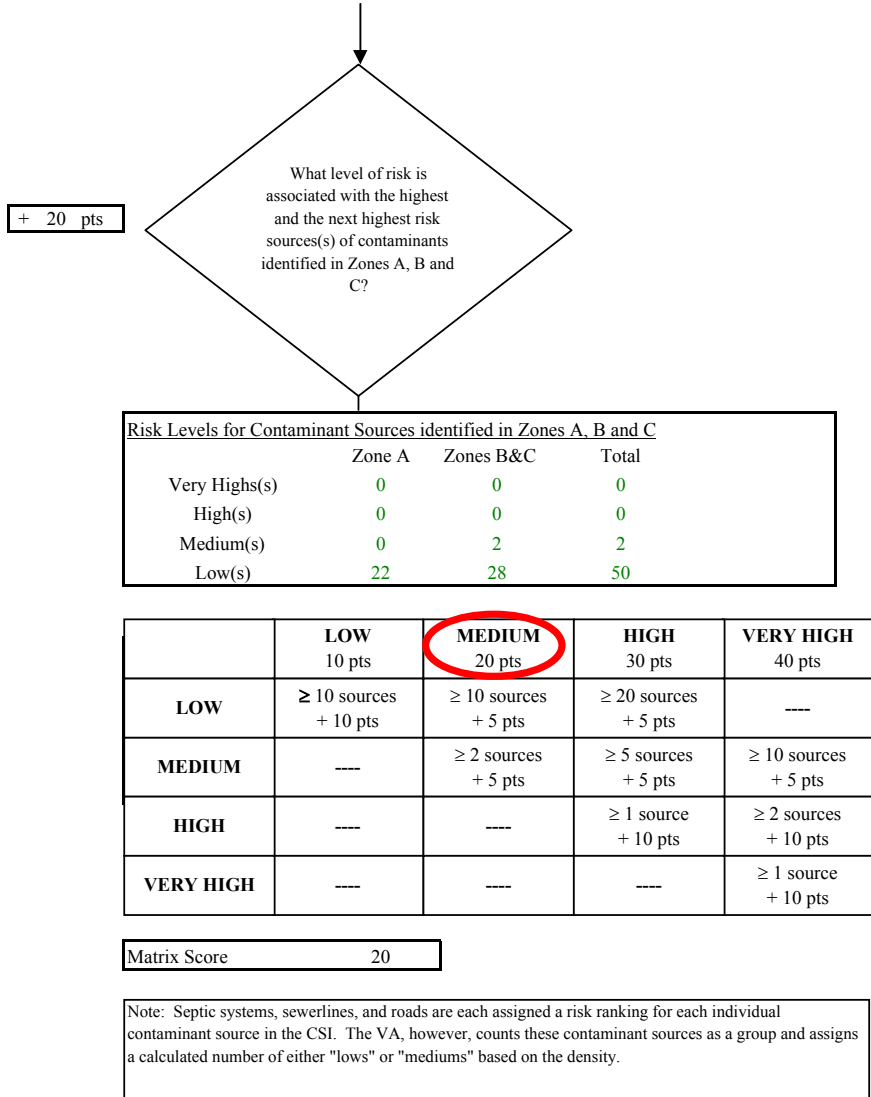


Chart 7. Contaminant risks for Wasilla Spruce Ave. Main and Back-up - Volatile Organic Chemicals

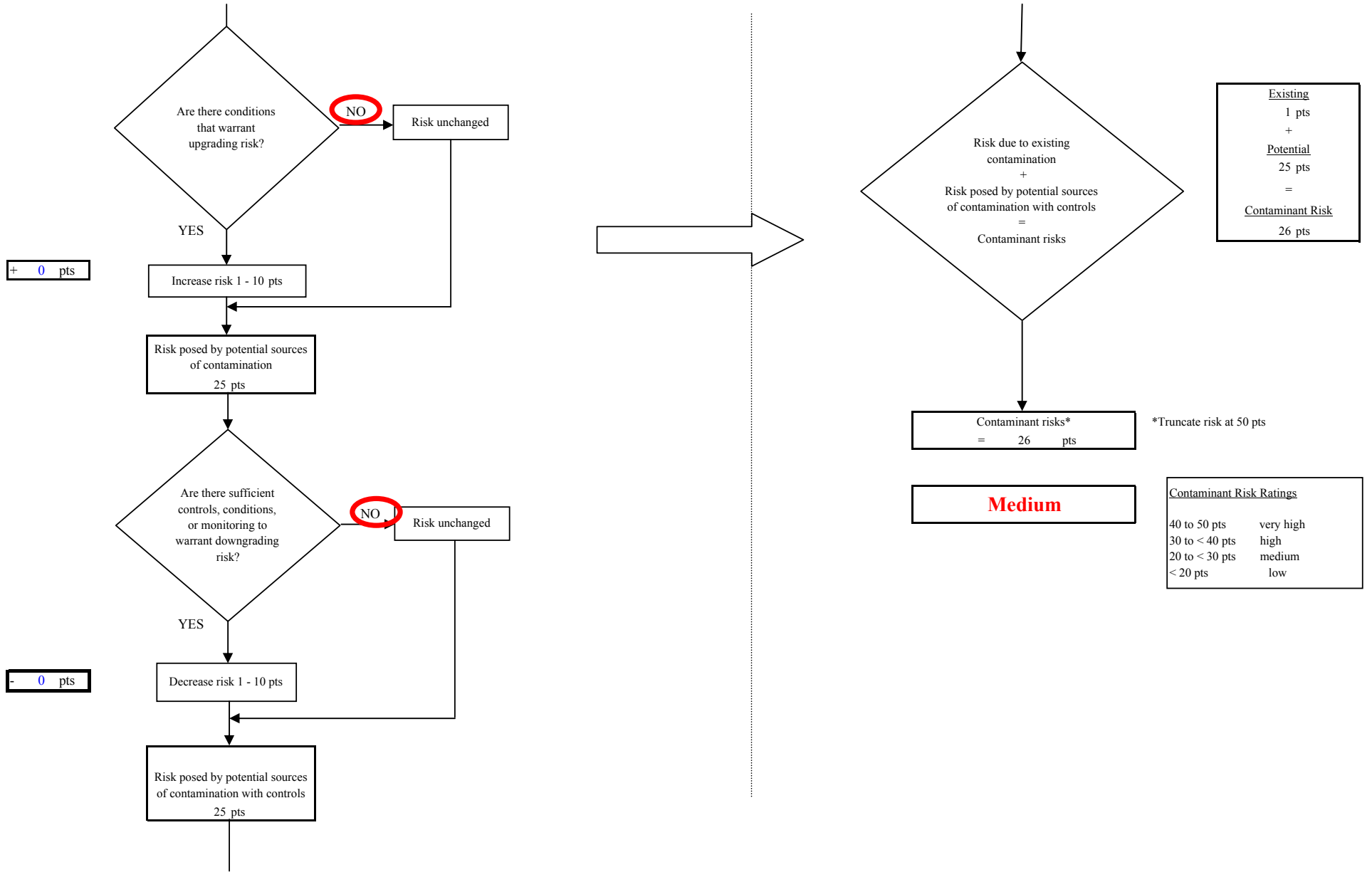


Chart 8. Vulnerability analysis for Wasilla Spruce Ave. Main and Back-up - Volatile Organic Chemicals

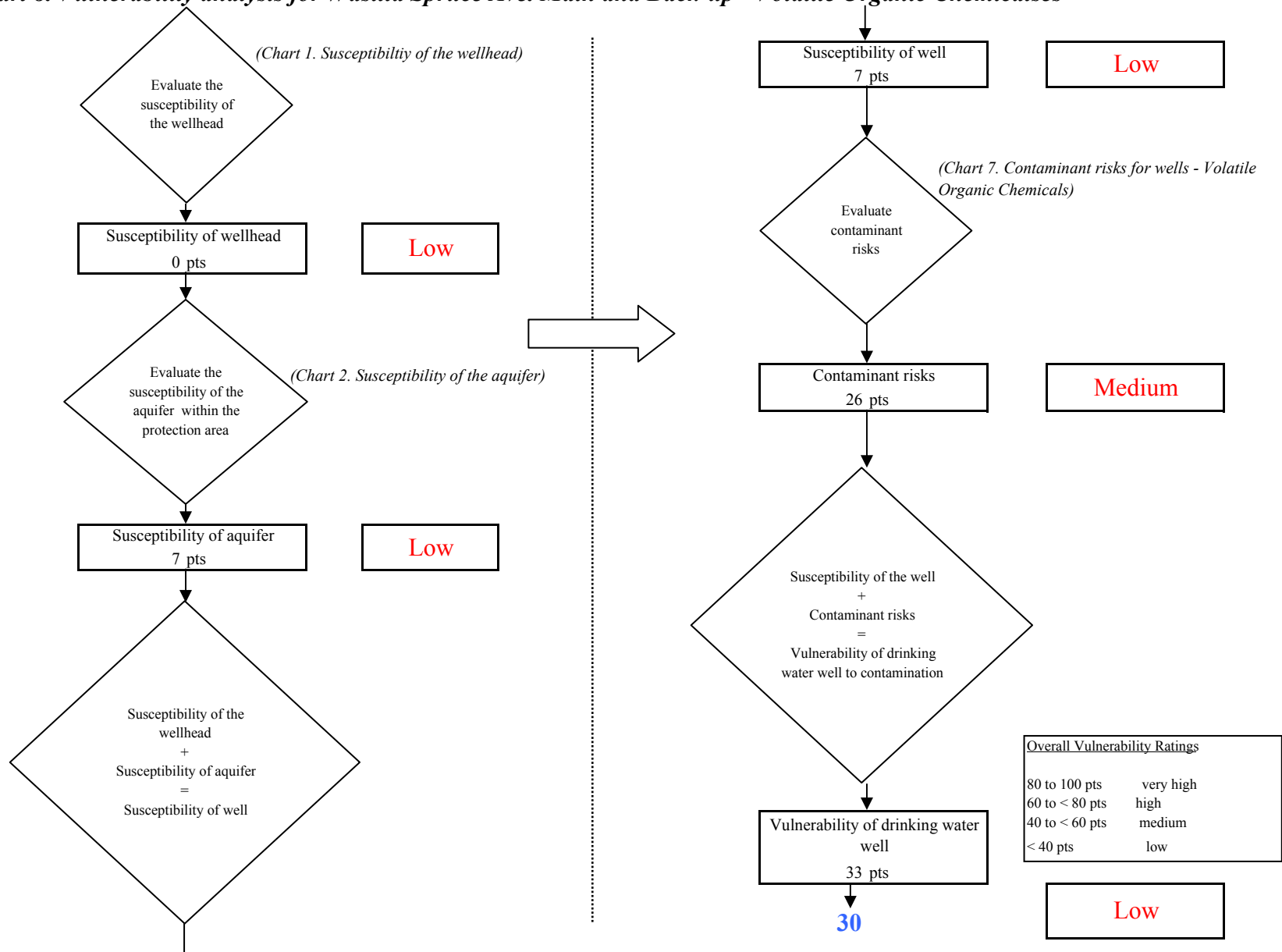


Chart 9. Contaminant risks for Wasilla Spruce Ave. Main and Back-up - Heavy Metals, Cyanide and Other Inorganic Chemicals

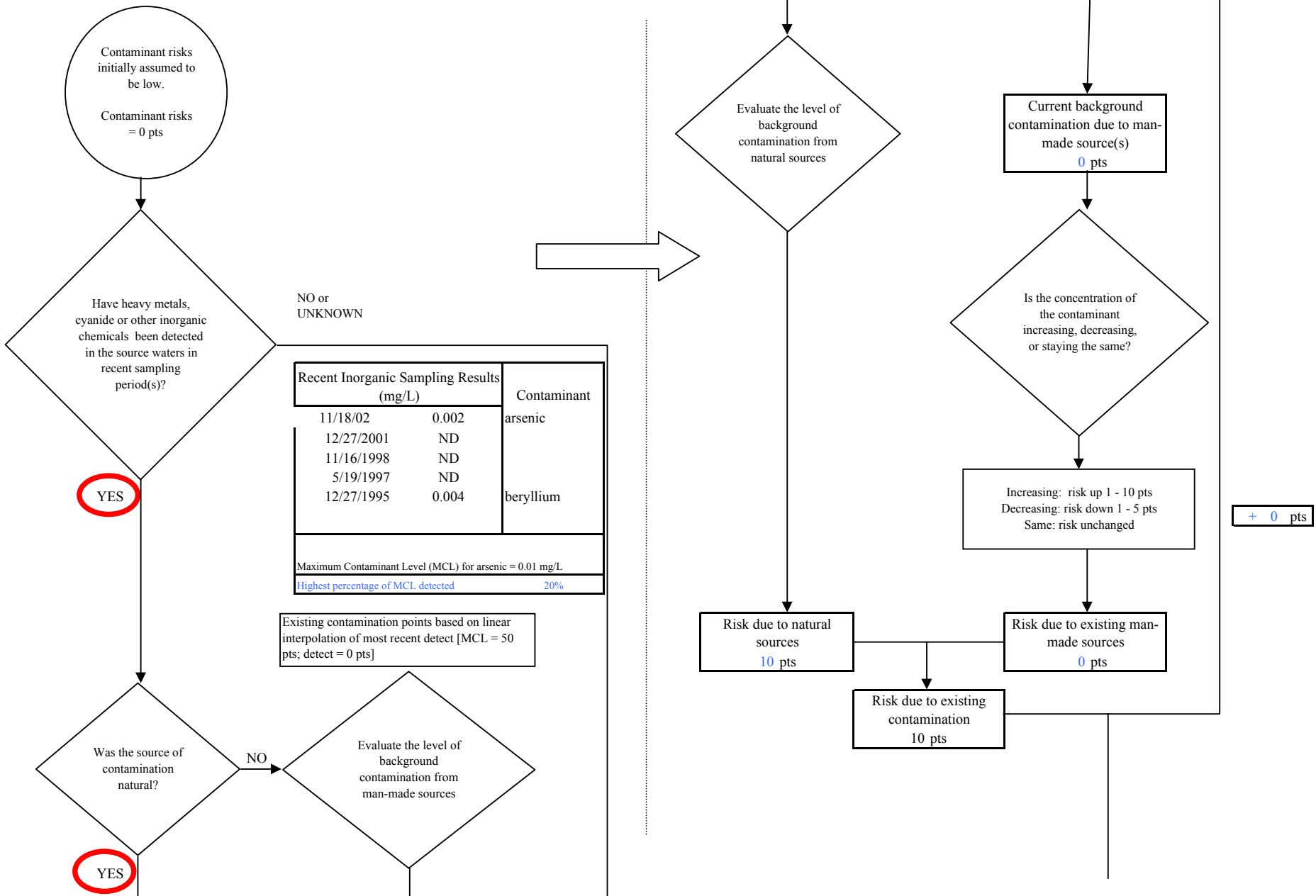


Chart 9. Contaminant risks for Wasilla Spruce Ave. Main and Back-up - Heavy Metals, Cyanide and Other Inorganic Chemicals

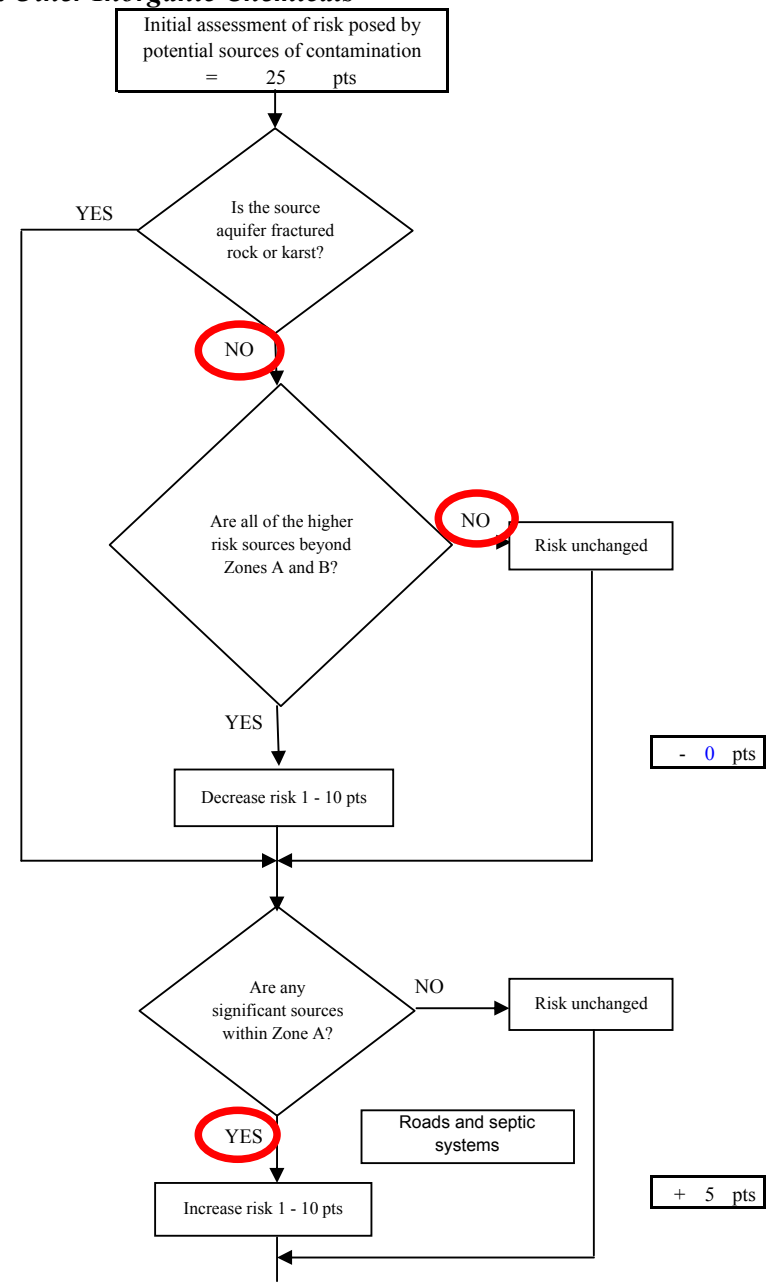
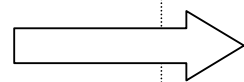
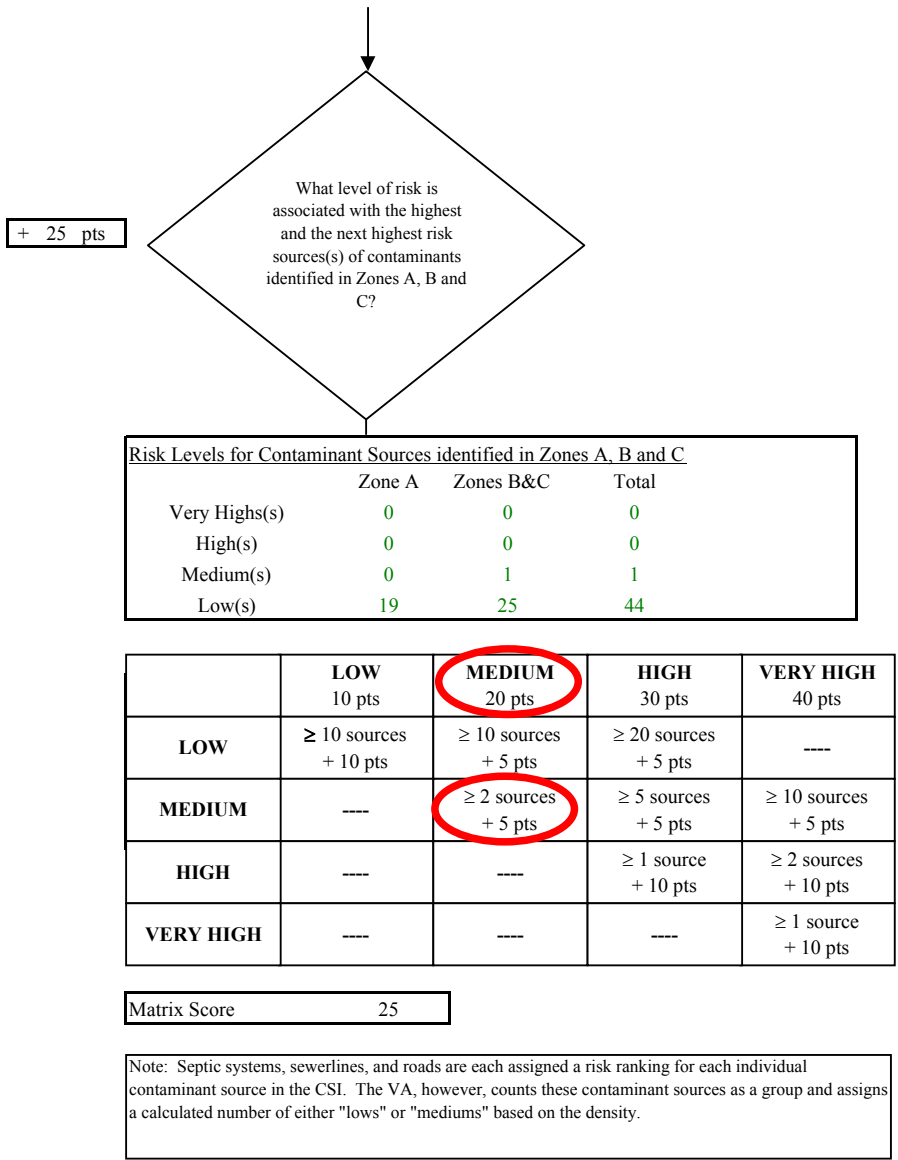


Chart 9. Contaminant risks for Wasilla Spruce Ave. Main and Back-up - Heavy Metals, Cyanide and Other Inorganic Chemicals

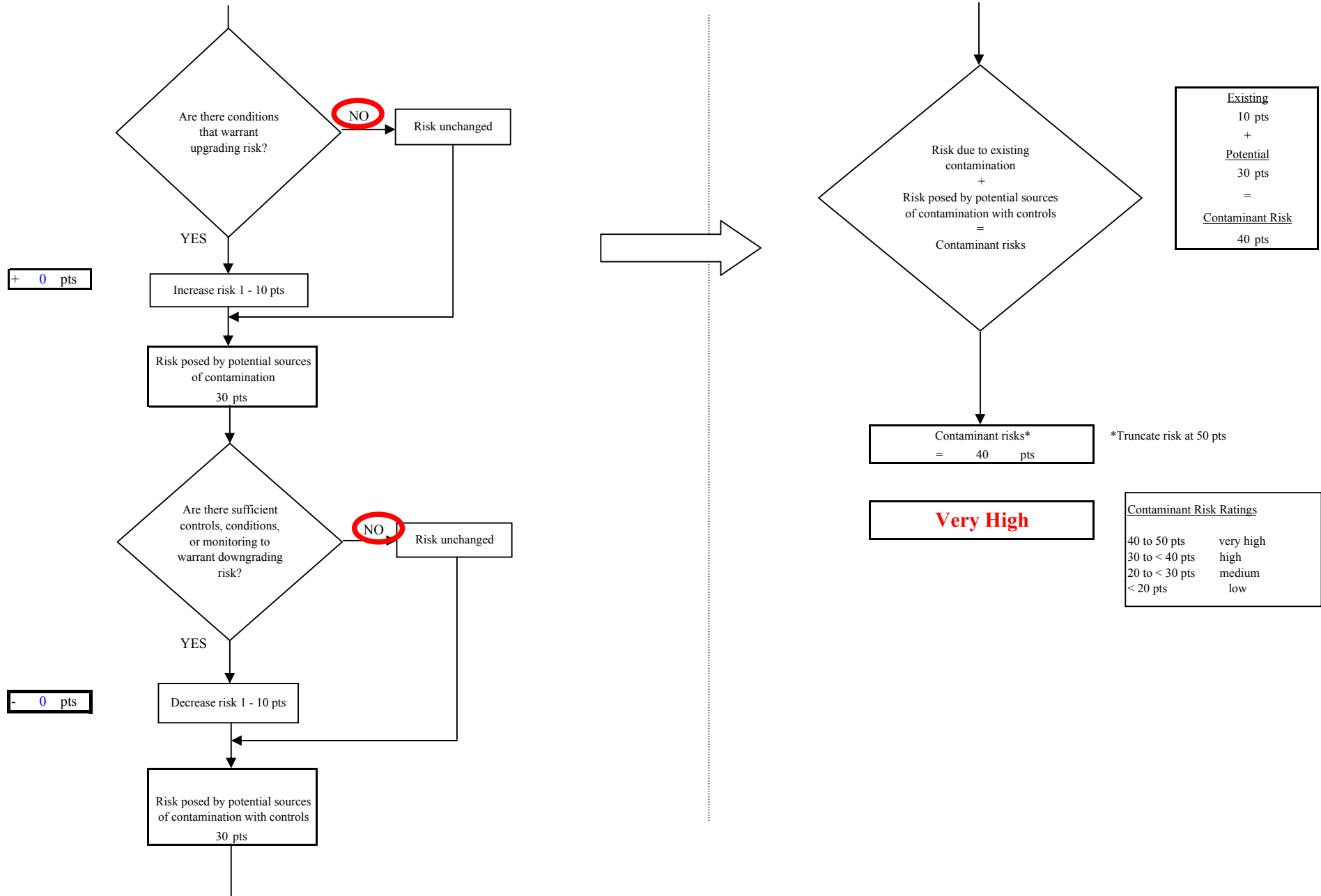


Chart 10. Vulnerability analysis for Wasilla Spruce Ave. Main and Back-up - Heavy Metals, Cyanide and Other Inorganic Chemicals

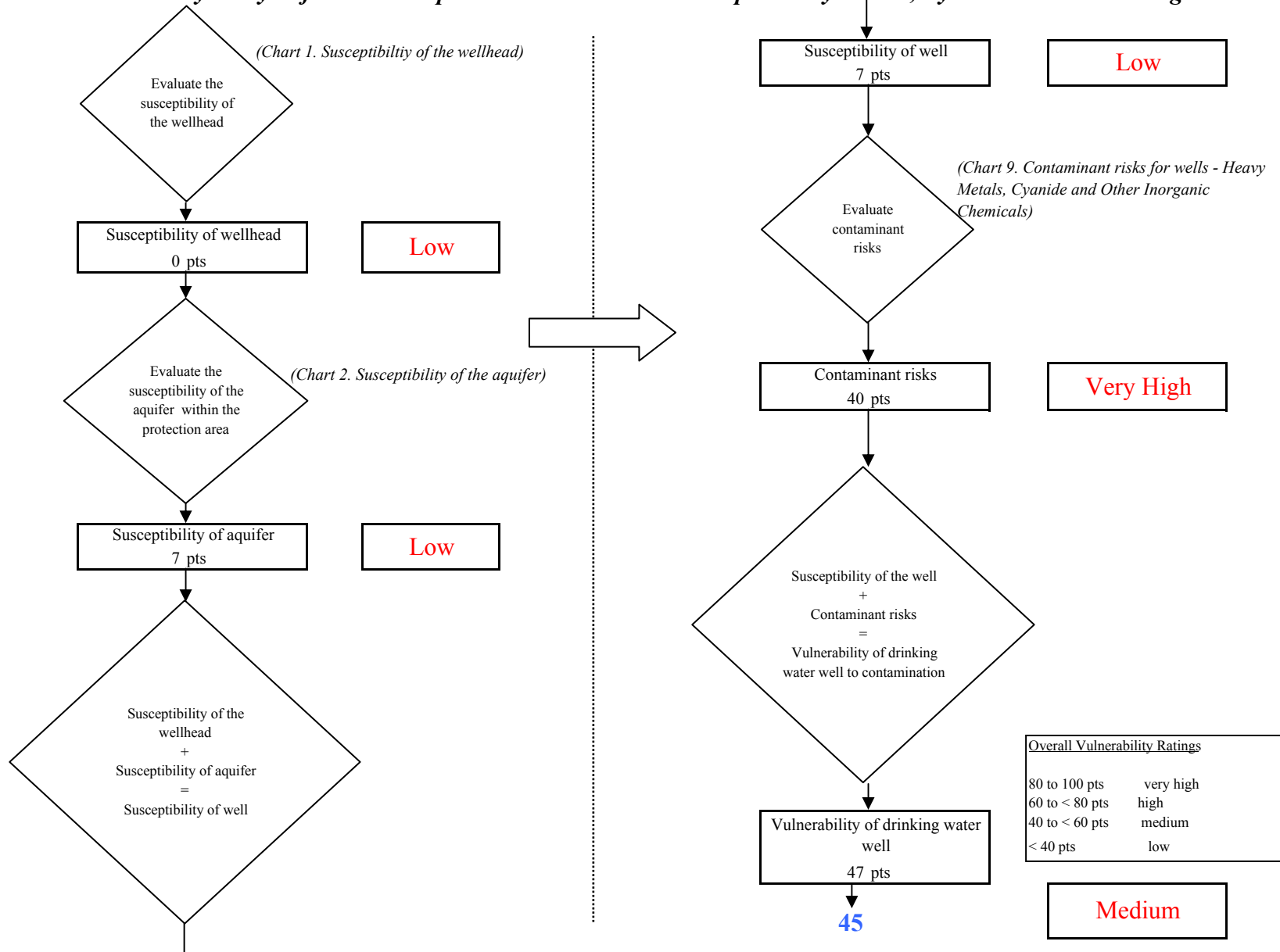


Chart 11. Contaminant risks for Wasilla Spruce Ave. Main and Back-up - Synthetic Organic Chemicals

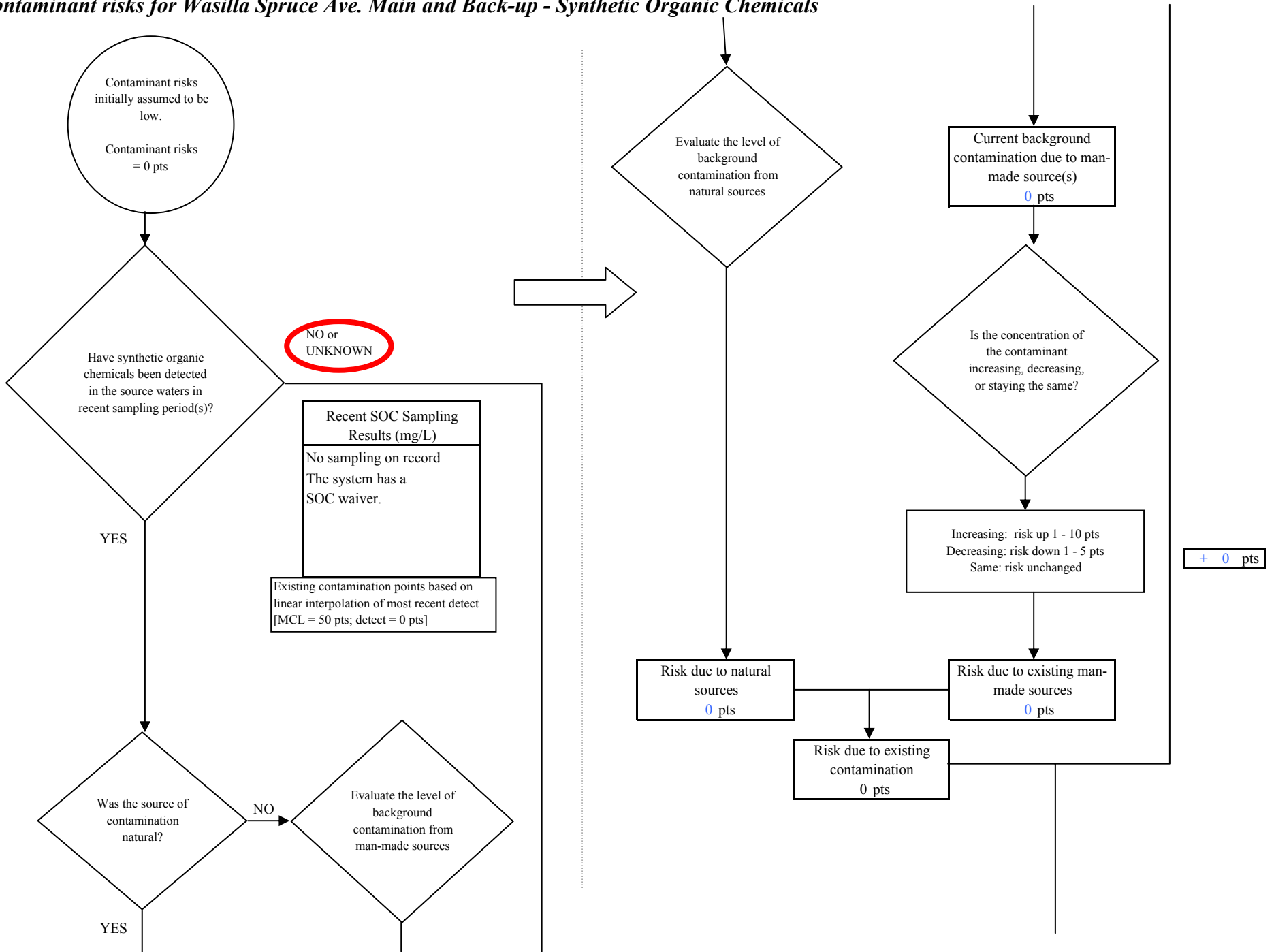
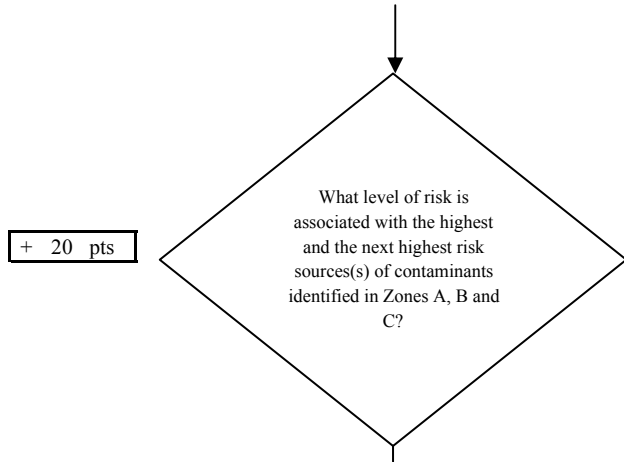


Chart 11. Contaminant risks for Wasilla Spruce Ave. Main and Back-up - Synthetic Organic Chemicals



Risk Levels for Contaminant Sources identified in Zones A, B and C			
	Zone A	Zones B&C	Total
Very Highs(s)	0	0	0
High(s)	0	0	0
Medium(s)	0	0	0
Low(s)	18	22	40

	LOW 10 pts	MEDIUM 20 pts	HIGH 30 pts	VERY HIGH 40 pts
LOW	≥ 10 sources + 10 pts	≥ 10 sources + 5 pts	≥ 20 sources + 5 pts	----
MEDIUM	----	≥ 2 sources + 5 pts	≥ 5 sources + 5 pts	≥ 10 sources + 5 pts
HIGH	----	----	≥ 1 source + 10 pts	≥ 2 sources + 10 pts
VERY HIGH	----	----	----	≥ 1 source + 10 pts

Matrix Score 20

Note: Septic systems, sewerlines, and roads are each assigned a risk ranking for each individual contaminant source in the CSI. The VA, however, counts these contaminant sources as a group and assigns a calculated number of either "lows" or "mediums" based on the density.

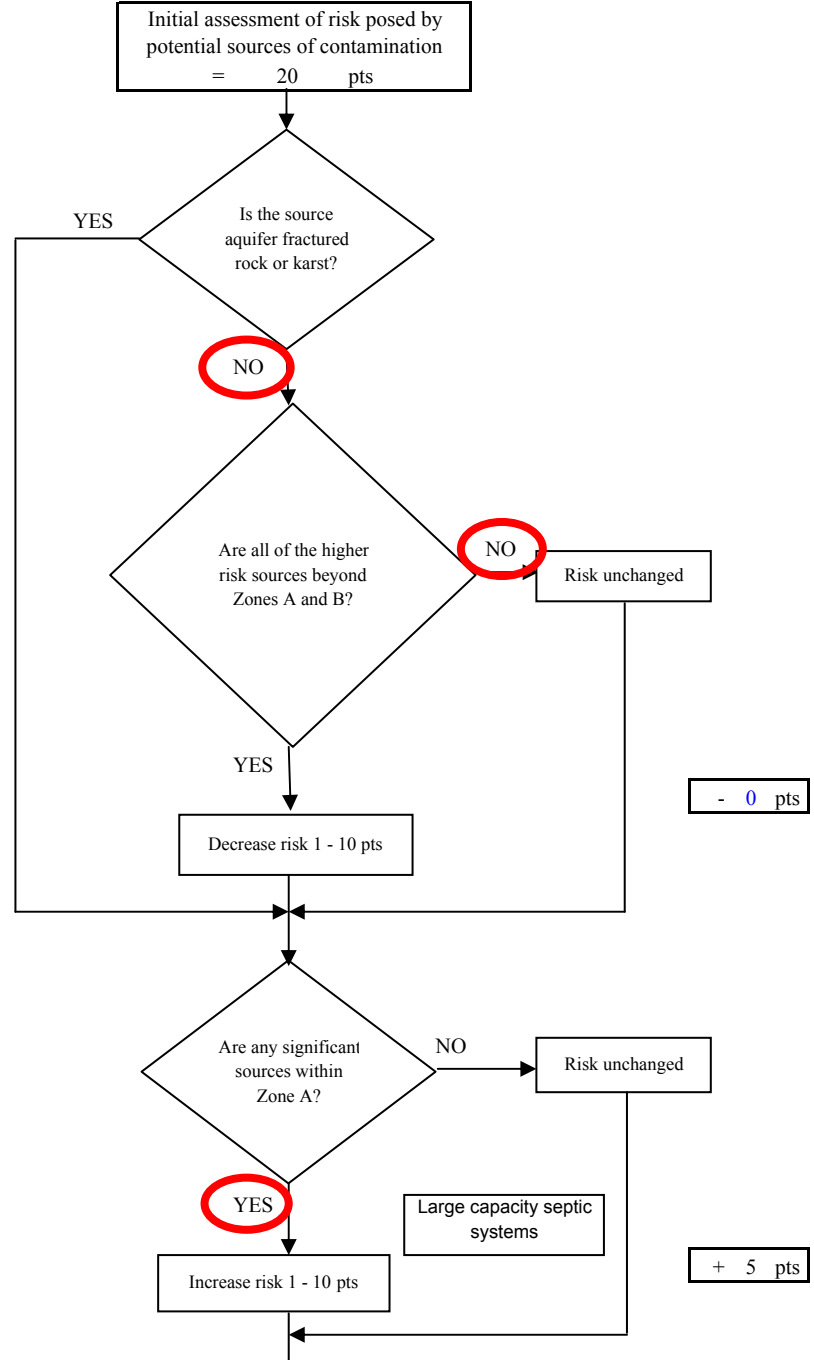
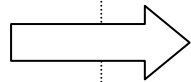


Chart 11. Contaminant risks for Wasilla Spruce Ave. Main and Back-up - Synthetic Organic Chemicals

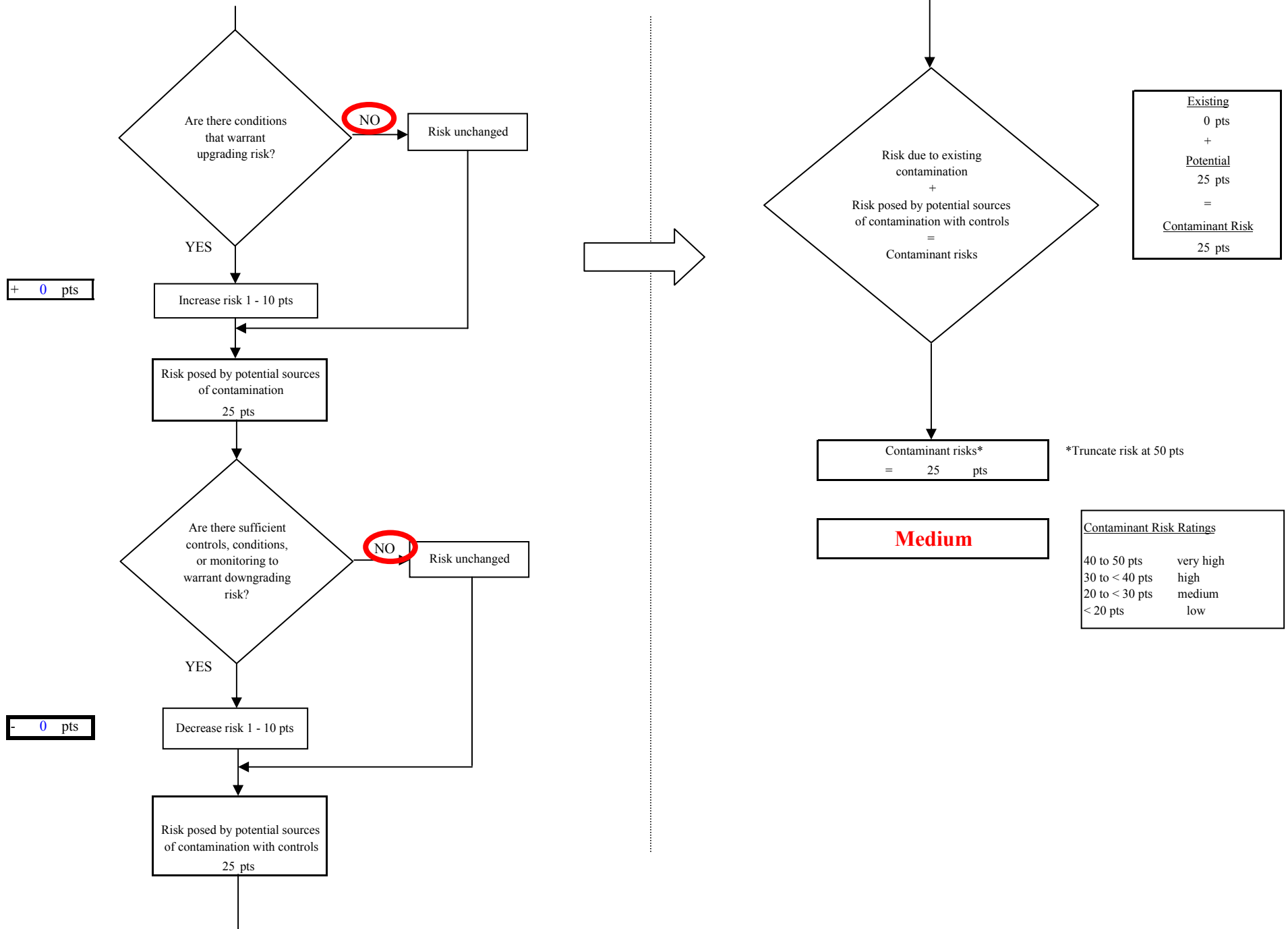


Chart 14. Vulnerability analysis for Wasilla Spruce Ave. Main and Back-up - Other Organic Chemicals

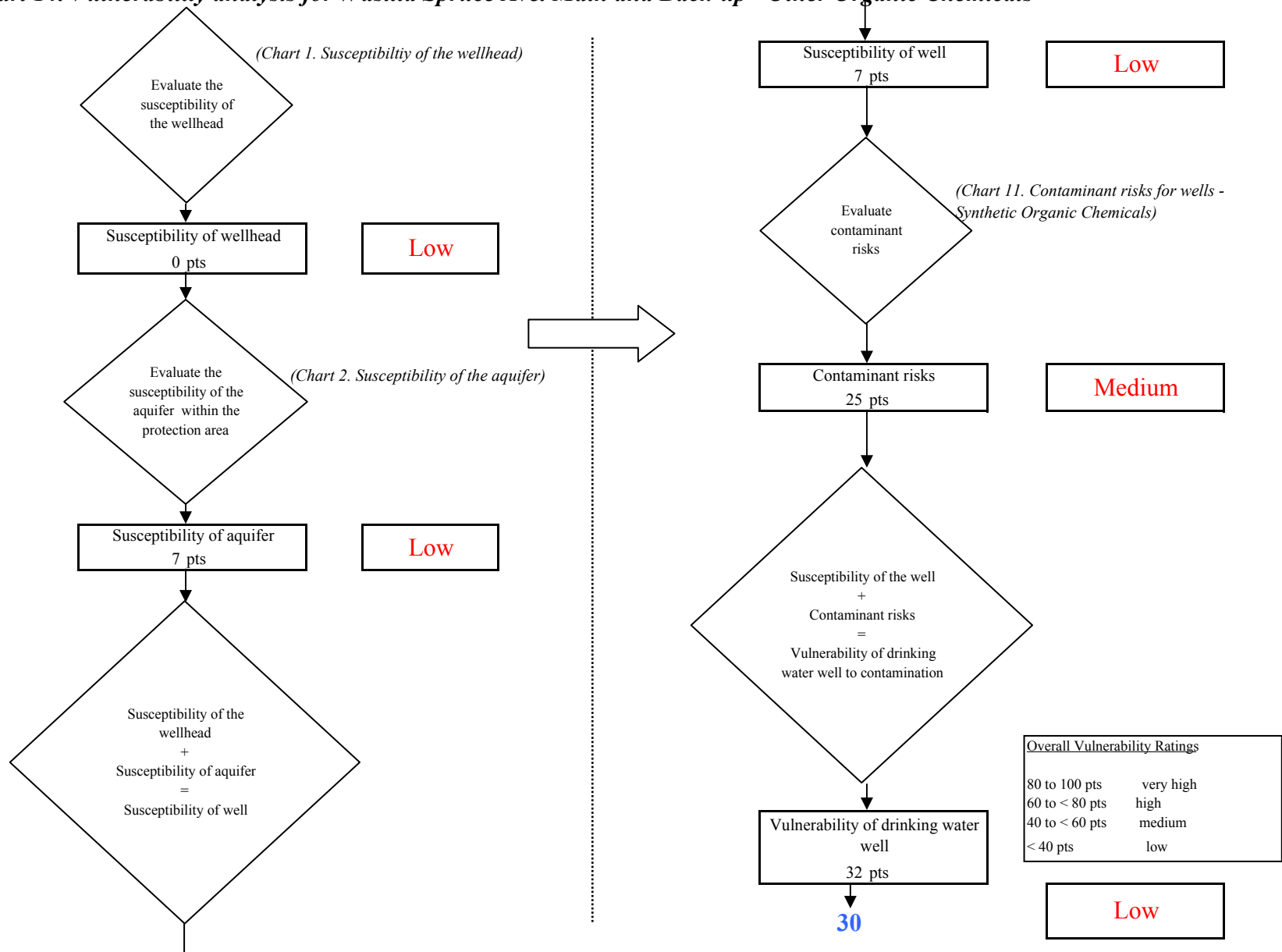


Chart 13. Contaminant risks for Wasilla Spruce Ave. Main and Back-up - Other Organic Chemicals

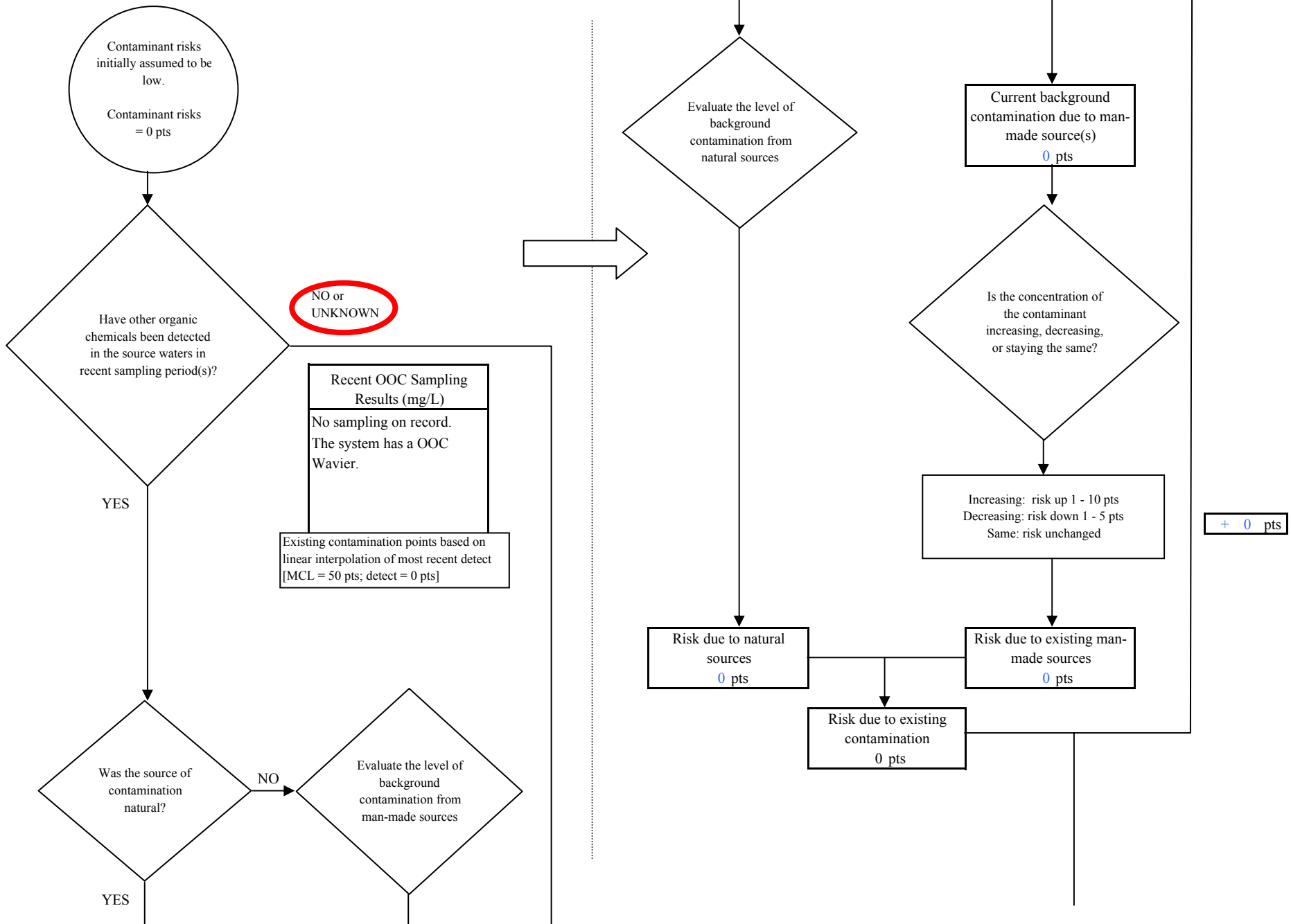
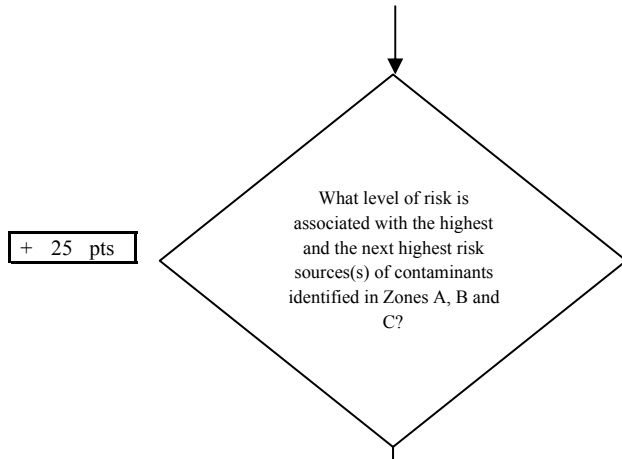


Chart 13. Contaminant risks for Wasilla Spruce Ave. Main and Back-up - Other Organic Chemicals



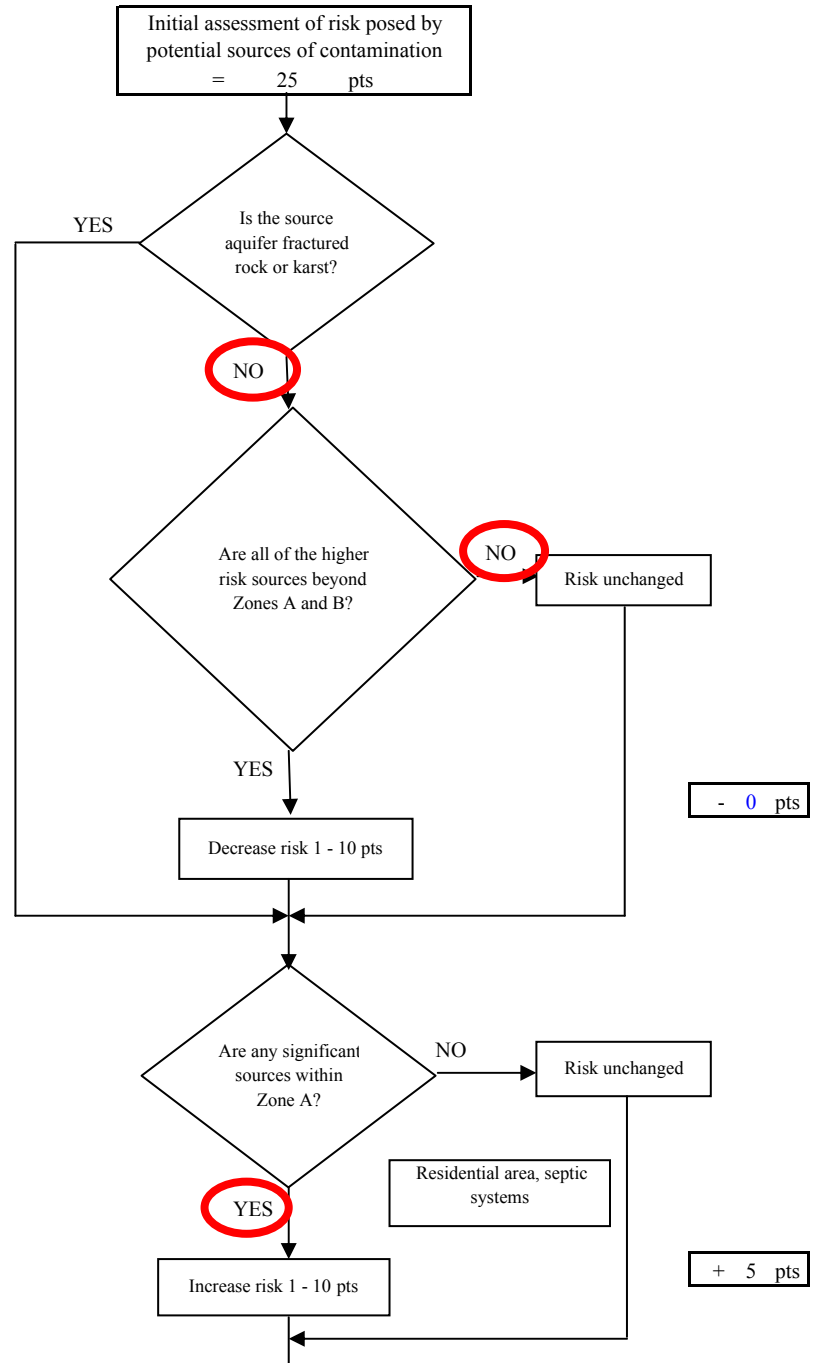
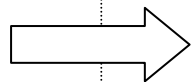
+ 25 pts

Risk Levels for Contaminant Sources identified in Zones A, B and C			
	Zone A	Zones B&C	Total
Very Highs(s)	0	0	0
High(s)	0	0	0
Medium(s)	0	1	1
Low(s)	19	22	41

	LOW 10 pts	MEDIUM 20 pts	HIGH 30 pts	VERY HIGH 40 pts
LOW	≥ 10 sources + 10 pts	≥ 10 sources + 5 pts	≥ 20 sources + 5 pts	----
MEDIUM	----	≥ 2 sources + 5 pts	≥ 5 sources + 5 pts	≥ 10 sources + 5 pts
HIGH	----	----	≥ 1 source + 10 pts	≥ 2 sources + 10 pts
VERY HIGH	----	----	----	≥ 1 source + 10 pts

Matrix Score 25

Note: Septic systems, sewerlines, and roads are each assigned a risk ranking for each individual contaminant source in the CSI. The VA, however, counts these contaminant sources as a group and assigns a calculated number of either "lows" or "mediums" based on the density.



- 0 pts

+ 5 pts

Chart 13. Contaminant risks for Wasilla Spruce Ave. Main and Back-up - Other Organic Chemicals

