



A Source Water Assessment (SWA) for Alaska Sales & Service Valley, PWS ID # 220134.001

What is an SWA?

The Drinking Water Protection group of the Drinking Water Program is producing Source Water Assessments (SWAs) in compliance with the Safe Drinking Water Act (SDWA) Amendments of 1996. Each SWA includes:

- A delineation of the drinking water source area;
- Inventory of potential and existing sources of contamination;
- Risk ranking for the identified contaminants;
- Evaluation of the overall vulnerability to the PWS source.

What is a Protection Area?

The most probable area for contamination to reach the drinking water well is within the drinking water protection area (DWPA). The DWPA for a groundwater source is the area around the well (the area influenced by pumping) and also the area upgradient of the well, usually forming a parabola shape. Because releases of contaminants within the DWPA are most likely to impact the well, this area will serve as the focus for voluntary protection efforts.

The DWPAs established for wells by DEC are separated into 2 zones, limited by the watershed. The following is a summary of the two zones for wells and the estimated time-of-travel for each:

Zone	Definition
A	Several months time-of-travel
B	Less than the 2 year time-of-travel

Table 1: Public Water System Source Information

PWS Name	Alaska Sales & Service Valley
PWS ID Number	220134.001
State Asgn ID No.	WL001
Facility Name	WL Alaska Sales & Service Valley
Source Type	Groundwater
Federal Classification	Non-Transient, Non-Community
Total Depth of Well (ft bls*)	134
Static Water Level (ft bls*)	60
Aquifer Type	Unconfined
Aquifer Formation	Sand and Gravel

*"ft bls" = feet below land surface

Executive Summary

The public water system for Alaska Sales & Service Valley is a Non-Transient, Non-Community (NTNC) water system consisting of one well in Wasilla, Alaska. An assessment of the susceptibility of the wellhead and aquifer to contamination, and the vulnerability of the public water system to potential and existing contamination were evaluated as of March, 2012. The wellhead received a susceptibility rating of **Low** and the aquifer received a susceptibility rating of **Very High**. Combining these two ratings produces a **Medium** rating for the natural susceptibility of the well. Identified potential and existing sources of contamination for the Alaska Sales & Service Valley public drinking water system include a motor vehicle dealership, large-capacity septic systems, a quarry, residential areas, residential septic systems, and roads. These are considered sources of bacteria and viruses, nitrates and/or nitrites, volatile organic chemicals (VOCs), heavy metals, cyanide, and other inorganic chemicals, synthetic organic chemicals (SOCs), and other organic chemicals (OOCs).

Combining the natural susceptibility of the well with the six (6) contaminant risk categories, the public water system for Alaska Sales & Service Valley received an overall vulnerability rating of **High** for bacteria and viruses and nitrates and/or nitrites; **Medium** for VOCs, heavy metals, cyanide and other inorganic chemicals and other organic chemicals; and a **Low** for SOCs.

Introduction

Source Water Assessments (SWAs) are intended to provide public water system operators, owners, communities, and local governments with the best available information that may be used to protect the quality of their drinking water. Alaska Sales & Service Valley's SWA is a tool to be used as the foundation or "stepping stone" to comprehensive management and protection of its groundwater resource. Protecting the quality of your drinking water is a sensible investment.

Drinking Water Protection Area (DWPA)

For groundwater sources, a combination of a numerical flow model and natural factors such as drainage divides, subsurface barriers, and manmade structures are used to determine the size and shape of the DWPA. The orientation of the DWPA is typically drawn using a groundwater surface, or a land surface, elevation map. Because of uncertainties and changing site conditions, a factor of safety is added in calculating the size of the protection areas. (See Alaska Sales & Service Valley's DWPA on Map1 of the Appendices.)

<p style="text-align: center;"><u>Natural Susceptibility</u></p> <p>Susceptibility of a groundwater source is a measure of a water supply's potential to become contaminated based on information gathered on the wellhead and the aquifer.</p>	<p>Natural Susceptibility (Wellhead and Aquifer)</p> <p>The susceptibility of a wellhead to the introduction of contaminants to the drinking water is determined by, but not limited to, the following risk factors: presence of a sanitary seal, protection from flooding, and presence of adequate grouting.</p> <p>The wellhead for Alaska Sales & Service Valley received a Low susceptibility rating. The most recent sanitary survey (completed in November 5, 2010) indicates that the well is capped with a sanitary seal, the land surface is sloped away from the well, and the well is properly grouted. A sanitary seal prevents potential contaminants from entering the well while sloping of the land surface and grouting help to prevent potential contaminants from traveling down the outside of the well casing and into the aquifer.</p> <p>The susceptibility of an aquifer to the introduction of contaminants is determined by, but not limited to, the following risk factors: whether the aquifer is confined or unconfined, whether the well is completed in unconsolidated or fractured bedrock, whether other wells and bore holes are penetrating the aquifer and, if applicable, the characteristics of the confining layer.</p> <p>The Alaska Sales & Service Valley water system draws water from an unconfined aquifer overlain by sand and gravel. It received a Very High susceptibility rating because of its unconfined nature and the presence of other wells penetrating the vadose zone of the protection area. Because an unconfined aquifer is recharged by surface water and precipitation that migrates downward from the surface, it is susceptible to contamination from outside sources. Furthermore, the presence of other wells penetrating the vadose zone of the protection area can allow contaminants to travel into the shared aquifer with precipitation and runoff.</p>
--	---

The **Natural Susceptibility** of the well to contamination is **Medium**. Table 2 summarizes the susceptibility ratings for Alaska Sales & Service Valley.

	<i>Rating</i>
Susceptibility of the wellhead	Low
+	
Susceptibility of the Aquifer	Very High
=	
Natural Susceptibility	Medium

Inventory of Potential and Existing Sources Contamination

The Drinking Water Protection (DWP) group has completed an inventory of potential and existing sources of contamination within the DWPA for the Alaska Sales & Service Valley well. This inventory was completed through a search of agency records and other publicly available information. Potential sources of contamination to the drinking water aquifer include a wide range of categories and types. Potential drinking water contaminants are found within agricultural, residential, commercial, and industrial areas, but can also occur within areas that have little or no development.

The identified potential sources of contamination are summarized in Table 3 and are portrayed in Map 2 of the Appendices.

Table 3: Contaminant Source Inventory

Contaminant Source Type	Contaminant Source ID	Zone	Map Number	Comments
Motor vehicle dealerships - cars, trucks, motor cycles, ATV's, snow machines, boats (with service department)	C27	A	2	Alaska Sales & Service Valley on East Blue Lupine Dr
Injection wells (Class V) Large-Capacity Septic System (Drainfield Disposal Method)	D10	A	2	S Down Wind Cir (Multi-Family)
Injection wells (Class V) Large-Capacity Septic System (Drainfield Disposal Method)	D10	A	2	E Shop Cir (EMC - Retail Trade)
Injection wells (Class V) Large-Capacity Septic System (Drainfield Disposal Method)	D10	A	2	E Blue Lupine Dr (Alaska Sales & Service -Motor Vehicle Sales)
Injection wells (Class V) Large-Capacity Septic System (Drainfield Disposal Method)	D10	A	2	E Blue Lupine Dr (Cummings - Retail Trade)
Quarries (sand, gravel, rock, other?)	E10	A	2	Quality Sand & Gravel LLC in both Zones A and B
Residential Areas	R01	A	2	Identified approximately 15 acres of Residential Area within Zone A
Septic systems (serves one single-family home)	R02	A	2	7 Inferred Residential Septics within Zone A
Highways and roads, paved (cement or asphalt)	X20	A	2	Identified 7 Roads within Zone A - E Blue Lupine Rd, S Down Wind Cir, E Fireweed Rd, E Parks Hwy, E Shop Cir, S Tanya Ct, and E Updraft Rd
Injection wells (Class V) Large-Capacity Septic System (Drainfield Disposal Method)	D10	B	2	E Updraft Rd (Quality Sand & Gravel - Gravel Pit)
Residential Areas	R01	B	2	Identified approximately 31 acres of Residential Areas within Zone B
Septic systems (serves one single-family home)	R02	B	2	4 Inferred Residential Septics within Zone B
Highways and roads, paved (cement or asphalt)	X20	B	2	Identified 2 Roads within Zone B - S Hyer Rd and S Pioneer Dr

Contaminant Risks

Inventoried contaminant sources are sorted by the Drinking Water Protection (DWP) group according to the six (6) major categories of contaminants regulated for drinking water: 1) bacteria and viruses; 2) nitrates and/or nitrites; 3) volatile organic chemicals (VOCs); 4) heavy metals, cyanide, and other inorganic chemicals; 5) synthetic organic chemicals (SOCs); and 6) other organic chemicals (OOCs). The contaminant sources are then given a ranking (within each category) according to the degree of risk posed to human health based on the volume, toxicity, persistence, and the mobility of the contaminants involved.

Table 4: Contaminant Risk Rankings

Contaminant Source Type	Contaminant Source ID	Zone	Risk Ranking					
			Bacteria & Viruses	Nitrates / Nitrites	VOCs	Inorganic Chemicals*	SOCs	OOCs
Motor vehicle dealerships - cars, trucks, motor cycles, ATV's, snow machines, boats (with service department)	C27	A	None	None	Medium	Low	None	Medium
Injection wells (Class V) Large-Capacity Septic System (Drainfield Disposal Method)	D10	A	High	High	Low	Low	Low	Low
Injection wells (Class V) Large-Capacity Septic System (Drainfield Disposal Method)	D10	A	High	High	Low	Low	Low	Low
Injection wells (Class V) Large-Capacity Septic System (Drainfield Disposal Method)	D10	A	High	High	Low	Low	Low	Low
Injection wells (Class V) Large-Capacity Septic System (Drainfield Disposal Method)	D10	A	High	High	Low	Low	Low	Low
Quarries (sand, gravel, rock, other?)	E10	A	None	Low	Low	None	None	Low
Residential Areas	R01	A	Low	Low	Low	Low	Low	Low
Septic systems (serves one single-family home)	R02	A	Low	Low	Low	Low	:	Low
Highways and roads, paved (cement or asphalt)	X20	A	Low	Low	Low	Low	None	Low
Injection wells (Class V) Large-Capacity Septic System (Drainfield Disposal Method)	D10	B	High	High	Low	Low	Low	Low
Residential Areas	R01	B	Low	Low	Low	Low	Low	Low
Septic systems (serves one single-family home)	R02	B	Low	Low	Low	Low	Low	Low
Highways and roads, paved (cement or asphalt)	X20	B	Low	Low	Low	Low	None	Low
Overall Risk Ranking			High	High	Medium	Medium	Low	Medium

* Includes Heavy Metals, Cyanide and Other Inorganic Chemicals

The risk rankings for Bacteria and Viruses and Nitrates and/or Nitrites are **Very High**. The rankings are driven by the large-capacity septic systems within the DWPA. No bacteria/viruses have been detected in source water and only small concentrations of nitrates/nitrites have been detected.

The risk rankings for Volatile Organic Chemicals (VOCs), Heavy Metals, Cyanide, and Other Inorganic Chemicals, and Other Organic Chemicals (OOCs) are **Medium**. The rankings for VOCs and OOCs are driven by the motor vehicle dealership within the DWPA. VOCs and OOCs have not been detected in source water. Barium, arsenic, chromium, selenium and antimony have been detected in small concentrations. This has driven the ranking for heavy metals, cyanide and other inorganic chemicals along with the motor vehicle dealership, large-capacity septic systems, residential areas, residential septic systems, and roads within the DWPA.

The risk ranking for Synthetic Organic Chemicals (SOCs) is **Low**. The ranking is driven by the large-capacity septic systems, residential areas, and residential septic systems. SOCs have not been detected in source water.

Overall Vulnerability of the Drinking Water Source to Contamination

An overall vulnerability is determined for each water system by combining each of the contaminant risk scores with the natural susceptibility score:

$$\text{Overall Vulnerability of the Drinking Water Source to Contamination} = \text{Natural Susceptibility} + \text{Contaminant Risks}$$

Table 5 summarizes the overall vulnerability ratings for each of the six (6) categories of drinking water contaminants.

Category	Rating
Bacteria and Viruses	High
Nitrates and/or Nitrites	High
Volatile Organic Chemicals	Medium
Heavy Metals, Cyanide, and Other Inorganic Chemicals	Medium
Synthetic Organic Chemicals	Low
Other Organic Chemicals	Medium

Using the Source Water Assessment

This assessment of contaminant risks and source vulnerability can be used as a foundation for local voluntary protection efforts as well as a basis for the continuous efforts on the part of Alaska Sales & Service Valley to protect public health. Communities can use the Source Water Assessment (SWA) to create a *drinking water protection plan* to manage the identified potential and existing sources of regulated drinking water contaminants and to prevent or minimize new contaminant threats in the drinking water protection area.

Alaska Sales & Service Valley can use a number of different drinking water protection methods to limit or prevent contamination of its drinking water source.

- Non-Regulatory Options include:
 - Public education about where drinking water comes from and the effects of contaminants is probably the most effective and least costly method of protection;
 - Household hazardous waste collection - household hazardous wastes are usually generated in small amounts but can have a big impact on the environment;
 - The source water assessment report is a tool that can be used to prioritize protection strategies identified in a drinking water protection plan;
 - Taking proactive measures towards proper waste storage and disposal can help eliminate the need to find an alternative drinking water source by preventing source water contamination;
 - Conservation easements - easements can assist in protecting the area by limiting development;
 - Make a written plan on what you will do if an accidental spill happens that could contaminate your source of drinking water; and
 - Local drinking water protection plan (an example or template is available from DEC).

- Regulatory Options include:
 - Source protection regulations prohibiting the presence or use of all or specific chemicals within the drinking water protection area;
 - Zoning ordinances to control development within the different protection areas around the source;
 - Subdivision ordinance; and
 - Operating standards for industrial and other activities within the different protection areas around the source.

Source Water Assessments can be updated to reflect any changes in the vulnerability and/or susceptibility of the Alaska Sales & Service Valley drinking water source. The data that is used to generate the Source Water Assessment is updated on an on-going basis as identified in the field or if changes are identified and brought to the attention of the Drinking Water Program.

Where to go from here?

The Source Water Assessment (SWA) is a comprehensive evaluation of the potential risk of contamination to the public water system and the source(s) of drinking water used by the system. Identifying potential sources of contamination and the vulnerability of the public water system is an important first step in protecting the drinking water source from contamination. However, in order to prevent contamination from occurring, action must be taken by the water system owner and/or operator. The SWA can be used by the public water system to educate the local community and to prioritize community-driven protection strategies. Inviting community members, council members, and local government officials to help develop a Drinking Water Protection Plan is one essential component towards successful drinking water protection efforts. For questions regarding, or assistance to begin, the process of developing a Drinking Water Protection Plan, please contact the Drinking Water Protection group at #1-866-956-7656.

Other Resources

The Drinking Water Protection group, the EPA, and local organizations are available to help you build on this Source Water Assessment report as you continue to improve drinking water protection in your community.

DEC, Drinking Water Protection - http://dec.alaska.gov/eh/dw/DWP/source_water.html

EPA, Drinking Water Protection - <http://cfpub.epa.gov/safewater/sourcewater/index.cfm>

Groundwater Foundation - <http://www.groundwater.org>

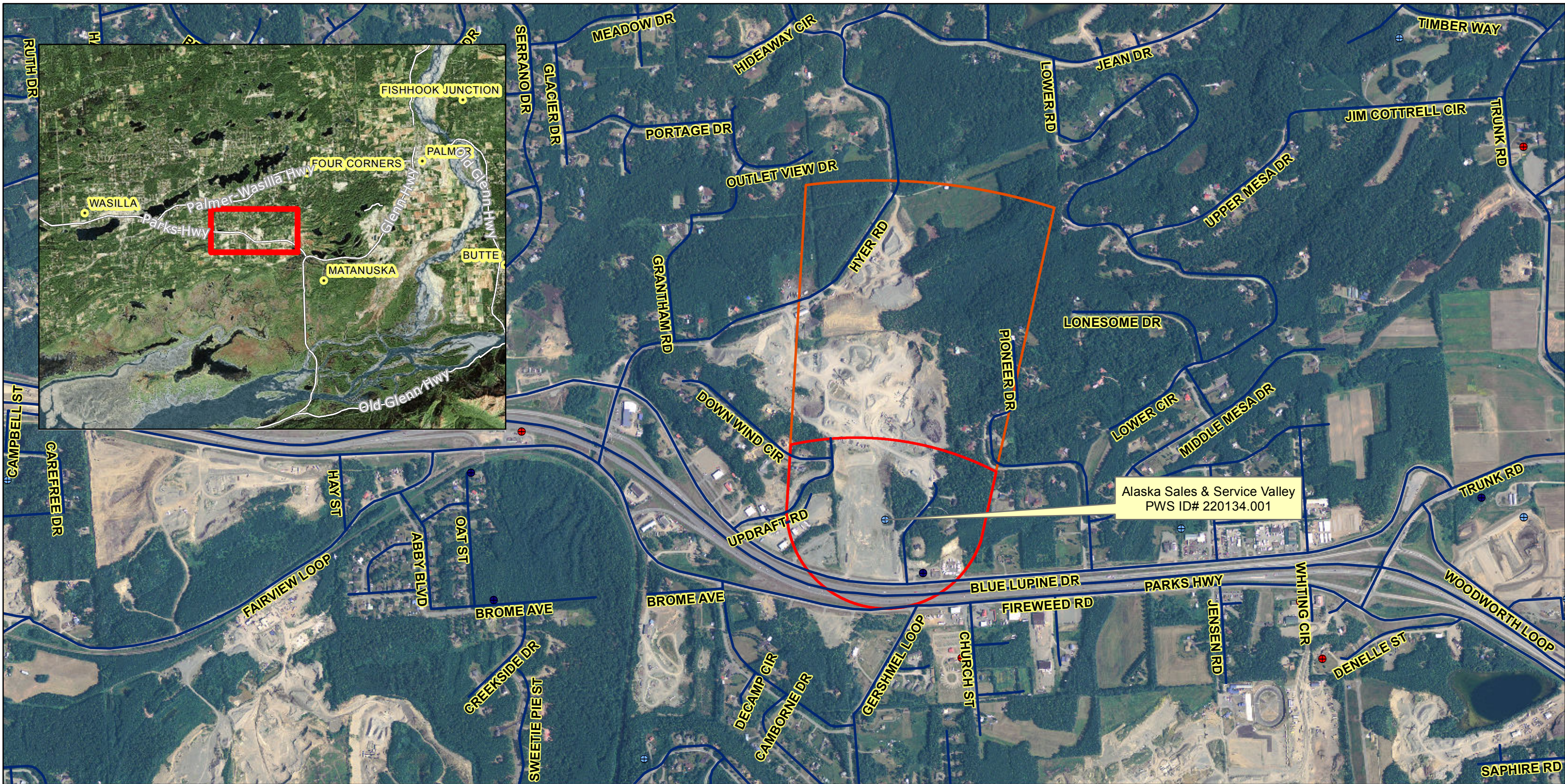
ARWA (Alaska Rural Water Association) - <http://www.arwa.org>

Groundwater Protection Council - <http://www.gwpc.org>

National Ground Water Association: <http://ngwa.org/>

Appendices

- Alaska Sales & Service Valley Drinking Water Protection Area Location Map (Map 1)
- Alaska Sales & Service Valley Drinking Water Protection Area with Potential and Existing Contaminant Sources (Map 2)
- Best Management Strategies for Potential Contaminants Identified within a Drinking Water Source Protection Area



Map 1 - Alaska Sales & Service Valley

PWS ID#s 220134.001



1:12,000
Inset: 1:216,000



Public Drinking Water Systems

- ⊕ Class A Water Systems (C/NTNC)
- Class B Water Systems (TNC)
- Class C Water Systems (State Regulated)

Drinking Water Protection Areas

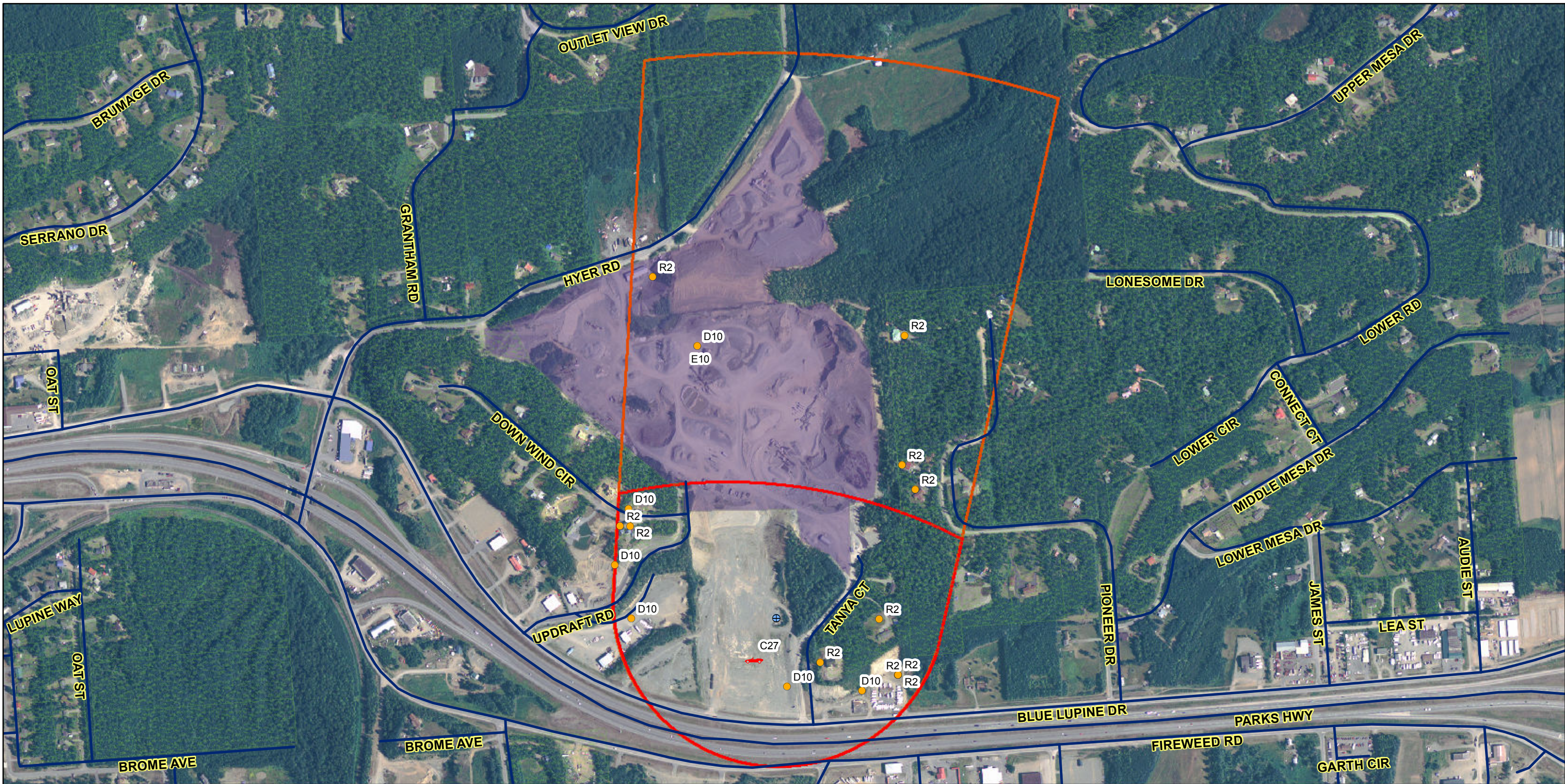
- Zone A (Several Months Time of Travel)
- Zone B (2 Year Time of Travel)

Data Sources:

Aerial Imagery: A WMS-compliant map server provided by the Alaska Mapped program (<http://www.alaskamapped.org>) and UAF-GINA (<http://www.gina.alaska.edu>).

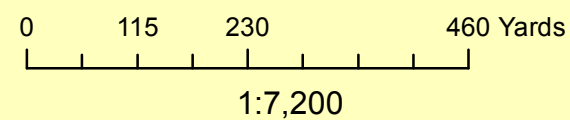
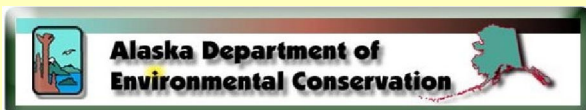
Roads: ArcIMS Layer from the MatSu Borough

Public Drinking Water System Sources and Drinking Water Protection Areas: Alaska Department of Environmental Conservation



Map 2 - Alaska Sales & Service Valley

PWS ID# 220134.001



Public Drinking Water Systems

- ⊕ Class A Water Systems (C/NTNC)
- Class B Water Systems (TNC)
- Class C Water Systems (State Regulated)

Drinking Water Protection Areas

- Zone A (Several Months Time of Travel)
- Zone B (2 Year Time of Travel)

Potential/Existing Sources of Contamination

- R02, Residential Septics
- ⚡ C27, Motor vehicle dealerships (with service department)
- D10, Large-Capacity Septic System (Drainfield Disposal Method)
- R01, Residential Areas
- E10, Quarries (sand, gravel, rock, other)

Data Sources:

Aerial Imagery: A WMS-compliant map server provided by the Alaska Mapped program (<http://www.alaskamapped.org>) and UAF-GINA (<http://www.gina.alaska.edu>).

Roads: ArcIMS Layer from the MatSu Borough

Public Drinking Water System Sources, Drinking Water Protection Areas and Potential/Existing Sources of Contamination: Alaska Department of Environmental Conservation

Best Management Strategies for Potential Contaminants Identified within a Drinking Water Source Protection Area

Best Management Strategies (BMP's)	Contaminant Source ID's	Contaminant Source ID's	Contaminant Source ID's	Contaminant Source ID's
General BMP's for all Activities				
Avoid the activity or reduce its occurrence.	All	All	All	All
Move the activity indoors.	All	All	All	All
Use less material.	All	All	All	All
Use least toxic material available.	All	All	All	All
Create and maintain vegetative areas near activities.	All	All	All	All
Locate activities as far as possible from surface drainage paths.	All	All	All	All
Keep storm drain systems clean.	All	All	All	All
Reduce, reuse and recycle as much as possible.	All	All	All	All
Be an advocate for stormwater pollution prevention.	All	All	All	All
Report Violators.	All	All	All	All
Cleaning, Washing and Industrial Activities				
Cleaning and washing of tools, engines and manufacturing equipment .	Waste Water Disposal (D01-D62)	Industrial (I01-I36)	Commercial Activities (C01-C44)	Miscellaneous
Illicit connections to stormwater drains should be eliminated.	Waste Water Disposal (D01-D62)	Industrial (I01-I36)	Commercial Activities (C01-C44)	Miscellaneous
Employees should be educated.	Waste Water Disposal (D01-D62)	Industrial (I01-I36)	Commercial Activities (C01-C44)	Miscellaneous
All wastewater should be discharged to a holding tank, process treatment system, or sanitary sewer. Never discharge to septic system or stormwater drains.	Waste Water Disposal (D01-D62)	Industrial (I01-I36)	Commercial Activities (C01-C44)	Miscellaneous
If soaps and detergents are used, use least toxic chemical capable of doing the job. Use non-phosphate detergents, if possible.	Waste Water Disposal (D01-D62)	Industrial (I01-I36)	Commercial Activities (C01-C44)	Miscellaneous
Limit the amount of water used for washing activities to limit the potential runoff of carrying pollutants beyond the designated wash pad or capture system.	Waste Water Disposal (D01-D62)	Industrial (I01-I36)	Commercial Activities (C01-C44)	Miscellaneous
Recycle wash water for subsequent washings.	Waste Water Disposal (D01-D62)	Industrial (I01-I36)	Commercial Activities (C01-C44)	Miscellaneous
Implement one of following stormwater treatment BMP's:	Waste Water Disposal (D01-D62)	Industrial (I01-I36)	Commercial Activities (C01-C44)	Miscellaneous
Oil water separator.	Waste Water Disposal (D01-D62)	Industrial (I01-I36)	Commercial Activities (C01-C44)	Miscellaneous
Wet vault for settling.	Waste Water Disposal (D01-D62)	Industrial (I01-I36)	Commercial Activities (C01-C44)	Miscellaneous
Infiltration Basin.	Waste Water Disposal (D01-D62)	Industrial (I01-I36)	Commercial Activities (C01-C44)	Miscellaneous
Filtration for media designed for pollutant present.	Waste Water Disposal (D01-D62)	Industrial (I01-I36)	Commercial Activities (C01-C44)	Miscellaneous
Catch basin with a filter insert for pressure washing.	Waste Water Disposal (D01-D62)	Industrial (I01-I36)	Commercial Activities (C01-C44)	Miscellaneous
Paved wash area should be swept daily.	Waste Water Disposal (D01-D62)	Industrial (I01-I36)	Commercial Activities (C01-C44)	Miscellaneous
Greasy buildup on cooking equipment must be removed and properly disposed of prior to washing to reduce the amount of material that can contaminate runoff.	Waste Water Disposal (D01-D62)	Industrial (I01-I36)	Commercial Activities (C01-C44)	Miscellaneous
Use a tub or similar device to contain washwater.	Waste Water Disposal (D01-D62)	Industrial (I01-I36)	Commercial Activities (C01-C44)	Miscellaneous
If activity can not be moved indoors or contained by a tub, the washing area must drain to a sanitary sewer, holding tank or process treatment system and provisions should be made to prevent stormwater run-off onto the washing area.	Waste Water Disposal (D01-D62)	Industrial (I01-I36)	Commercial Activities (C01-C44)	Miscellaneous
If a holding tank is used, the contents must be pumped and disposed of appropriately.	Waste Water Disposal (D01-D62)	Industrial (I01-I36)	Commercial Activities (C01-C44)	Miscellaneous
A cover should be placed over wash area to prevent rain from falling on dirty equipment and producing contaminated runoff.	Waste Water Disposal (D01-D62)	Industrial (I01-I36)	Commercial Activities (C01-C44)	Miscellaneous
Take vehicles to commercial car wash.	Waste Water Disposal (D01-D62)	Industrial (I01-I36)	Commercial Activities (C01-C44)	Miscellaneous
Designated wash areas must be marked well, with signs indicated where and how washing should occur. Any inlets to sanitary sewer or storm drain should be marked "No Dumping".	Waste Water Disposal (D01-D62)	Industrial (I01-I36)	Commercial Activities (C01-C44)	Miscellaneous
Clean catch basins regularly.	Waste Water Disposal (D01-D62)	Industrial (I01-I36)	Commercial Activities (C01-C44)	Miscellaneous
Consider washing vehicles less frequently.	Waste Water Disposal (D01-D62)	Industrial (I01-I36)	Commercial Activities (C01-C44)	Miscellaneous
If pressure washing waste water doesn't collect in a centralized area, such as an area that is very flat, or you are on a grassed area, a tarp should be placed under the washing area to collect paint chips and other debris that may be loosened by the spray.	Waste Water Disposal (D01-D62)	Industrial (I01-I36)	Commercial Activities (C01-C44)	Miscellaneous
Pressure washing of boats should occur where runoff control can be achieved.	Waste Water Disposal (D01-D62)	Industrial (I01-I36)	Commercial Activities (C01-C44)	Miscellaneous

Best Management Strategies for Potential Contaminants Identified within a Drinking Water Source Protection Area

Best Management Strategies (BMP's)	Contaminant Source ID's	Contaminant Source ID's	Contaminant Source ID's	Contaminant Source ID's
Spread filter fabric under object being washed.	Waste Water Disposal (D01-D62)	Industrial (I01-I36)	Commercial Activities (C01-C44)	Miscellaneous
Spill cleanup material should be stocked near liquid transfer area and employees should be trained in emergency spill response procedures and correct use of spill clean up materials.	Waste Water Disposal (D01-D62)	Industrial (I01-I36)	Commercial Activities (C01-C44)	Miscellaneous
If a sump or holding tank is used for spill containment, its contents should be pumped out and disposed of appropriately.	Waste Water Disposal (D01-D62)	Industrial (I01-I36)	Commercial Activities (C01-C44)	Miscellaneous
Drip pans should be provided underneath hose and pipe connections and other leak prone areas during liquid transfer operations. Drip pans should be cleaned regularly and stored nearby transfer area.	Waste Water Disposal (D01-D62)	Industrial (I01-I36)	Commercial Activities (C01-C44)	Miscellaneous
A trained employee should be present during loading and unloading of materials.	Waste Water Disposal (D01-D62)	Industrial (I01-I36)	Commercial Activities (C01-C44)	Miscellaneous
Use a temporary storm drain cover during transfer of materials.	Waste Water Disposal (D01-D62)	Industrial (I01-I36)	Commercial Activities (C01-C44)	Miscellaneous
Pumps and hoses used for liquid transfer should be in good condition.	Waste Water Disposal (D01-D62)	Industrial (I01-I36)	Commercial Activities (C01-C44)	Miscellaneous
Cover transfer area with roof to avoid rain contact.	Waste Water Disposal (D01-D62)	Industrial (I01-I36)	Commercial Activities (C01-C44)	Miscellaneous
A designated area for liquid transfer could be paved and sloped to a sump or holding tank to facilitate capture.	Waste Water Disposal (D01-D62)	Industrial (I01-I36)	Commercial Activities (C01-C44)	Miscellaneous
If a liquid transfer area can not be paved, then a containment/run-on structure such as a curb, dike or berm should be provided.	Waste Water Disposal (D01-D62)	Industrial (I01-I36)	Commercial Activities (C01-C44)	Miscellaneous
Implement an inventory control system to track purchase and consumption of liquids.	Waste Water Disposal (D01-D62)	Industrial (I01-I36)	Commercial Activities (C01-C44)	Miscellaneous
If paving the fuel transfer area, use Portland Cement because asphalt deteriorates.	Waste Water Disposal (D01-D62)	Industrial (I01-I36)	Commercial Activities (C01-C44)	Miscellaneous
Do not hose down maintenance repair areas. Instead sweep weekly to collect dirt and use absorbent pads to collect spills.	Waste Water Disposal (D01-D62)	Industrial (I01-I36)	Commercial Activities (C01-C44)	Miscellaneous
If transfer occurs at temporary site, a tarp, cloth or drip pan should be used.	Waste Water Disposal (D01-D62)	Industrial (I01-I36)	Commercial Activities (C01-C44)	Miscellaneous
Drain all fluids from wrecked vehicles and remove coolants.	Waste Water Disposal (D01-D62)	Industrial (I01-I36)	Commercial Activities (C01-C44)	Miscellaneous
Sweep all driveways and gutters that show an accumulation of materials.	Waste Water Disposal (D01-D62)	Industrial (I01-I36)	Commercial Activities (C01-C44)	Miscellaneous
A catch basin insert filter should be used during rainy weather.	Waste Water Disposal (D01-D62)	Industrial (I01-I36)	Commercial Activities (C01-C44)	Miscellaneous
Painting, finishing and coating materials should be stored in areas protected from the rain.	Waste Water Disposal (D01-D62)	Industrial (I01-I36)	Commercial Activities (C01-C44)	Miscellaneous
Never clean brushes, equipment into storm drain, gutters, ditch, stream or other water body.	Waste Water Disposal (D01-D62)	Industrial (I01-I36)	Commercial Activities (C01-C44)	Miscellaneous
Properly dispose of hazardous wastes.	Waste Water Disposal (D01-D62)	Industrial (I01-I36)	Commercial Activities (C01-C44)	Miscellaneous
Wood treatment should not occur during rain or when rain is expected.	Waste Water Disposal (D01-D62)	Industrial (I01-I36)	Commercial Activities (C01-C44)	Miscellaneous
Keep treated wood away from surface drainage areas.	Waste Water Disposal (D01-D62)	Industrial (I01-I36)	Commercial Activities (C01-C44)	Miscellaneous
Agricultural Activities				
Maintain ground cover.	Agricultural Sources (A01-A10)			
Practice conservation tillage.	Agricultural Sources (A01-A10)			
Practice conservation coverage.	Agricultural Sources (A01-A10)			
Utilize contour farming.	Agricultural Sources (A01-A10)			
Plant critical areas.	Agricultural Sources (A01-A10)			
Plant and maintain vegetative buffers and filter strips.	Agricultural Sources (A01-A10)			
Practice conservation irrigation.	Agricultural Sources (A01-A10)			
Use integrated pest management activities.	Agricultural Sources (A01-A10)			
If possible crops should be planted away from surface drainages.	Agricultural Sources (A01-A10)			
Contact NRCS for developing fertilization schedules.	Agricultural Sources (A01-A10)			
Proper pesticide application should be followed.	Agricultural Sources (A01-A10)			
Never apply pesticides, herbicides, fungicides when rain is expected.	Agricultural Sources (A01-A10)			
Do not apply chemicals when it is windy.	Agricultural Sources (A01-A10)			
Use manual pest control procedures.	Agricultural Sources (A01-A10)			
Pesticide application should not occur within 200 of surface water.	Agricultural Sources (A01-A10)			
Store pesticide, herbicides and fungicides in protected areas.	Agricultural Sources (A01-A10)			
Compost material should be kept away from surface drainage.	Agricultural Sources (A01-A10)			

Best Management Strategies for Potential Contaminants Identified within a Drinking Water Source Protection Area

Best Management Strategies (BMP's)	Contaminant Source ID's	Contaminant Source ID's	Contaminant Source ID's	Contaminant Source ID's
Fuel Storage				
Replace leaking and deteriorating tanks with good tanks.	Petroleum Storage Tanks (T01-T24)	Miscellaneous		
Tanks should have overflow detection.	Petroleum Storage Tanks (T01-T24)	Miscellaneous		
Spilled liquids should be collected and disposed appropriately.	Petroleum Storage Tanks (T01-T24)	Miscellaneous		
Use double walled tanks.	Petroleum Storage Tanks (T01-T24)	Miscellaneous		
Do not store containers in direct contact with the ground.	Petroleum Storage Tanks (T01-T24)	Miscellaneous		
Use funnels to pour fuel.	Petroleum Storage Tanks (T01-T24)	Miscellaneous		
Demolitions				
Schedule demolitions to take part in dry part of year.				
Light spraying of water can control some of the dust.				
Logging				
Preserve vegetation along streams.	Natural Resource Extraction Activities (E01-E12)	Miscellaneous		
Logging road should have crushed rock or spill apron construction.	Natural Resource Extraction Activities (E01-E12)	Miscellaneous		
Avoid logging on steep slopes.	Natural Resource Extraction Activities (E01-E12)	Miscellaneous		
Drainage ditches and culverts should direct runoff into vegetated areas or stormwater treatment systems.	Natural Resource Extraction Activities (E01-E12)	Miscellaneous		
Mining/Natural Resource Extraction:				
If the material is appropriate, use excavated spoil material to form compacted beams along the down slope sides to contain runoff.	Natural Resource Extraction Activities (E01-E12)	Miscellaneous		
Semi-permanent stockpiles should be seeded to promote vegetation growth to limit erosion from stockpiles.	Natural Resource Extraction Activities (E01-E12)	Miscellaneous		
Use detention ponds to promote settling of suspended solids or infiltration basins to filter suspended solids, to clean up runoff before it leaves the site.	Natural Resource Extraction Activities (E01-E12)	Miscellaneous		
Use anchorage tarps to cover stockpiles at small-scale mining operations.	Natural Resource Extraction Activities (E01-E12)	Miscellaneous		
		Miscellaneous		
Residential BMP's				
Wash your car directly over your lawn or make sure wash water drains to a vegetative area. This allows the water and soap to soak into the ground instead of running off into a local water body.	Residential Sources (R01-R09)	Miscellaneous		
Select soap without phosphates.	Residential Sources (R01-R09)	Miscellaneous		
Sweep driveways and street gutters before washing vehicle to clean up dirt, leaves, trash and other materials that may flow to the storm drain along with your wash water.	Residential Sources (R01-R09)	Miscellaneous		
Commercial products are available that allow you to clean a vehicle without water.	Residential Sources (R01-R09)	Miscellaneous		
Use a nozzle on your hose to save water.	Residential Sources (R01-R09)	Miscellaneous		
Do not wash your car if rain is expected.	Residential Sources (R01-R09)	Miscellaneous		
Consider not washing your car at home.	Residential Sources (R01-R09)	Miscellaneous		
Recycle all oils, antifreeze, solvents and batteries.	Residential Sources (R01-R09)	Miscellaneous		
Never dump new or used automotive fluids or solvents on the ground, in a storm drain or street gutter, or in a water body. Eventually, it will make its way to local surface waters or groundwater.	Residential Sources (R01-R09)	Miscellaneous		
Do not mix wastes. The chlorinated solvents in some carburetor cleaners can contaminate a huge tank of used oil, rendering it unsuitable for recycling. Keep wastes in separate containers and properly labeled.	Residential Sources (R01-R09)	Miscellaneous		
To dispose of oil filters, punch a hole in the top and let drain for 24 hours. This is where a large funnel in the tip of your oil storage container will come in handy. After draining, wrap in 2 layers of plastic and dispose of in your regular garbage or recycle by taking it to the household hazardous waste line.	Residential Sources (R01-R09)	Miscellaneous		
Use care in draining and collecting antifreeze.	Residential Sources (R01-R09)	Miscellaneous		
Perform your service activities on concrete or asphalt.	Residential Sources (R01-R09)	Miscellaneous		
If doing body work outside, be sure to use a tarp to catch material resulting from grinding, sanding and painting. Double bag wastes.	Residential Sources (R01-R09)	Miscellaneous		
Follow manufacturer's directions when applying fertilizers.	Residential Sources (R01-R09)	Miscellaneous		
Consider planting a vegetative buffer zone.	Residential Sources (R01-R09)	Miscellaneous		

Best Management Strategies for Potential Contaminants Identified within a Drinking Water Source Protection Area

Best Management Strategies (BMP's)	Contaminant Source ID's	Contaminant Source ID's	Contaminant Source ID's	Contaminant Source ID's
Store all fertilizers and pesticides in covered location.	Residential Sources (R01-R09)	Miscellaneous		
Compost yard clippings.	Residential Sources (R01-R09)	Miscellaneous		
Pull weeds instead of spraying.	Residential Sources (R01-R09)	Miscellaneous		
Work fertilizers into the soil.	Residential Sources (R01-R09)	Miscellaneous		
Dispose of hazardous material and their containers properly.	Residential Sources (R01-R09)	Miscellaneous		
Store hazardous material off of the ground and away from children.		Miscellaneous		
Use ground cloths and drip pans when working outdoors with hazardous materials.	Residential Sources (R01-R09)	Miscellaneous		
Let latex paints dry before placing in garbage.	Residential Sources (R01-R09)	Miscellaneous		
Use less toxic products whenever possible.	Residential Sources (R01-R09)	Miscellaneous		
Follow manufacturer's directions in the use of all materials.	Residential Sources (R01-R09)	Miscellaneous		
When hazardous material are used, place inside a tub or bucket to minimize spills.	Residential Sources (R01-R09)	Miscellaneous		
Properly maintain septic systems.	Residential Sources (R01-R09)	Miscellaneous		
Monitor septic systems for signs of failure: odors, surface sewage or green areas.	Residential Sources (R01-R09)	Miscellaneous		
Pump septic systems out every two to five years depending on hydraulic loading.	Residential Sources (R01-R09)	Miscellaneous		
Garbage disposal increase the need for increase pumping of solids.	Residential Sources (R01-R09)	Miscellaneous		
Household chemicals such as solvents, drain cleaners, oils, paints, pharmaceuticals, and pesticides can interfere with the proper operation of septic systems.	Residential Sources (R01-R09)	Miscellaneous		
Vehicles and heavy equipment should be kept off the drainfield.	Residential Sources (R01-R09)	Miscellaneous		
Trees should not be planted in drainfield.	Residential Sources (R01-R09)	Miscellaneous		
Clean up your dog poop and horse manure.				
Wells and Boreholes				
Identify abandoned wells and boreholes and properly decommission.	Wells and Boreholes (W01-W09)	Miscellaneous		
Assure that all wells and boreholes are properly grouted and are securely sealed.	Wells and Boreholes (W01-W09)	Miscellaneous		
Assure that all wells and boreholes are properly constructed.	Wells and Boreholes (W01-W09)	Miscellaneous		
Educate community about the implications of abandoned wells.	Wells and Boreholes (W01-W09)	Miscellaneous		
Natural Products Processing/Storage				
Storage of soil, wood chips, saw dust, gravel, sand, salt should be covered.	Natural Products Processing/Storage (N01-N10)	Miscellaneous		
Store solid and food wasted in containers and check for leaks.	Natural Products Processing/Storage (N01-N10)	Miscellaneous		
Restrict animal access to stream or lakes by fences.	Natural Products Processing/Storage (N01-N10)	Miscellaneous		
Military Activities				
Assure all Military activities follow State and Federal guidelines.	Military Activities			
Uncontrolled Sites				
Assure all Military activities follow State and Federal guidelines.	Uncontrolled Sites			
Educate community about the implications of the uncontrolled sites.	Uncontrolled Sites			