

# Source Water Assessment:

Hydrogeologic Susceptibility and Vulnerability Assessment Dead Dog  
Saloon B&S Drinking Water Well, Wasilla, Alaska

---

DRINKING WATER PROTECTION PROGRAM REPORT 70

October 2001

# Source Water Assessment:

Hydrogeologic Susceptibility and Vulnerability Assessment for Dead Dog  
Saloon B&S Drinking Water Well, Wasilla, Alaska

---

By Shannon & Wilson, Inc.

DRINKING WATER PROTECTION PROGRAM REPORT 70

ALASKA DEPARTMENT OF ENVIRONMENTAL CONSERVATION: OCTOBER 2001  
**CONTENTS**

	Page		Page
Executive Summary	1	Inventory of Potential and Existing	
Introduction	1	Contaminant Sources	3
Description of the Matanuska – Susitna Valley, Alaska	1	Ranking of Contaminant Risks	4
Dead Dog Saloon B&S Public Water Source	3	Vulnerability of Dead Dog Saloon B&S Drinking Water Source	4
Assessment/Protection Area for Dead Dog Saloon B&S Drinking Water Source	3	Summary	5
		References Cited	6

**TABLES**

TABLE	1. Natural Susceptibility - Susceptibility of the Wellhead and Aquifer to Contamination	4
	2. Contaminant Risks	5
	3. Overall Vulnerability of Dead Dog Saloon B&S Public Drinking Water Source to Contamination	5

**ILLUSTRATIONS**

FIGURE	1. Index map showing the location of Meadow Creek Watershed	1
	2. Map showing the location of drinking water source for Dead Dog Saloon B&S	2

**APPENDICES**

APPENDIX	A. Dead Dog Saloon B&S Drinking Water Protection Area (Map 1)	
	B. Contaminant Source Inventory for Dead Dog Saloon B&S (Table 1) Contaminant Source Inventory and Risk Ranking for Dead Dog Saloon B&S – Bacteria and Viruses (Table 2) Contaminant Source Inventory and Risk Ranking for Dead Dog Saloon B&S – Nitrates/Nitrites (Table 3) Contaminant Source Inventory and Risk Ranking for Dead Dog Saloon B&S – Volatile organic chemicals (Table 4)	
	C. Dead Dog Saloon B&S Drinking Water Protection Area and Potential and Existing Contaminant Sources (Map 2)	
	D. Vulnerability Analysis for Contaminant Source Inventory and Risk Ranking for Dead Dog Saloon B&S Public Drinking Water Source (Chart 1 – Chart 8 and Table 1 – Table 3)	

# Hydrogeologic Susceptibility and Vulnerability Assessment for Dead Dog Saloon B&S Public Drinking Water Source, Wasilla, Alaska

By Shannon & Wilson, Inc.

## Drinking Water Protection Program Alaska Department of Environmental Conservation

### EXECUTIVE SUMMARY

The Dead Dog Saloon B&S well is a Class B drinking water source consisting of one well. The well is located in the Meadow Creek watershed, west of Wasilla, Alaska at approximately Mile 49 of the Parks Highway. Identified potential and current sources of contaminants for Dead Dog Saloon B&S include: a railroad corridor, nonresidential aboveground heating oil tanks, and a residential septic system. These identified potential and existing sources of contamination are considered sources of bacteria and viruses, nitrates and/or nitrites, and volatile organic chemicals. Overall, Dead Dog Saloon B&S public water source received vulnerability ratings of **Low** for bacteria and viruses, nitrates and/or nitrites, and volatile organic chemicals.

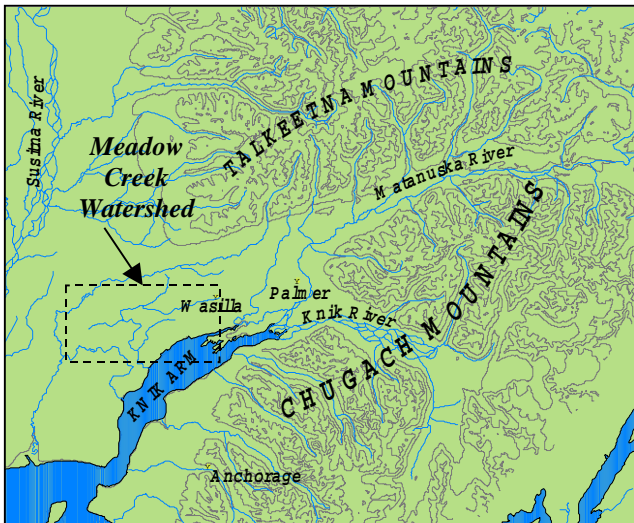


Figure 1. Index Map showing the location of the Matanuska-Susitna Valley and Meadow Creek Watershed.

### INTRODUCTION

The purpose of this environmental assessment is to provide public water system owners/operators, communities, and local governments with information they can use to preserve the quality of Alaska's public drinking water supplies. This assessment was completed for the Dead Dog Saloon B&S source of public drinking water. This source consists of one well in the Meadow Creek Watershed (see Figure 1). This assessment, known under the Alaska Drinking Water Protection Program as the *Source Water Assessment*, has combined a review of the natural hydrogeologic sensitivity with potential and existing contaminant risks to arrive at an overall vulnerability of the drinking water source to contamination. This assessment has been completed as a basis for local voluntary protection efforts and to assist agencies in their efforts to reduce risk to this public drinking water supply.

### DESCRIPTION OF THE MEADOW CREEK - AREA, ALASKA

#### Location

The Meadow Creek watershed, located in southcentral Alaska, lies within the Matanuska-Susitna Borough. The Borough encompasses 24,694 square miles and supports a population in 2000 of 59,322. The Borough is contained within the watersheds of the Matanuska and Susitna Rivers which flow from the glacier melt waters in the Alaska Range, Talkeetna Mountains, and the Chugach Mountains to tidewater in the Knik Arm of Upper Cook Inlet (*Jokela, Munter and Evans, 1991*) (Figure 1). The area between the Matanuska and Susitna Valley is commonly referred to as the Mat-Su Valley. The Meadow Creek watershed contains 115 lakes, including Big Lake, and extends from an area northwest of Wasilla to the west end of Big Lake (*Jokela, Munter and Evans, 1991*), as shown in Figure 1.

The Borough's close proximity to Anchorage and its abundance of surface-water resources has helped contribute to rapid growth over the last two decades. The population has tripled since 1980. As of 1998, approximately 9% of the state population resided in the Matanuska-Susitna Borough. The projected growth rate is expected to be 3.3% per year, three times higher than the state rate. At this rate, the Borough will have approximately 13% of the state's population by 2018 (ADOL, 1999).

### Climate

The Meadow Creek-area climate is somewhat transitional in that it does not experience large daily and annual temperature fluctuations like those experienced in the interior of Alaska nor does it experience high amounts of precipitation typified by gulf coast regions.

The mean daily temperature ranges from 9.4 degrees Fahrenheit during the summer months to 13.8 degrees Fahrenheit during the winter months. The annual precipitation in the Meadow Creek-area is approximately 20 inches per year and total snow is around 59 inches per year. The average snow depth during snowy months is 6.4 inches (Western Regional Climate Center, 2000). Precipitation generally increases inland toward the Talkeetna Mountains where annual precipitation may exceed 60 inches per year (Brabets, 1997).

### Physiography and Groundwater Conditions

Surface elevations in the Matanuska-Susitna Borough range from sea level where the Knik River and Matanuska River enter the Cook Inlet to well over 6,000 feet in the peaks that bound the area. Glacial moraine and outwash deposits primarily mantle the surface of the Mat-Su Valley.

The regional geology and ground water conditions of the Mat-Su Valley vary greatly depending on location. The terrain is dominated by distinctive landforms created by repeated glacial advances and retreats during the Pleistocene epoch (2 million to 10,000 years before present). The unconsolidated layers, layers of sediment that are not cemented together, are comprised of various mixtures of fine- to coarse-grained particles (clay to boulders). The majority of wells in the Mat-Su Valley are located in unconsolidated layers consisting of relatively well sorted sands and gravels. These unconsolidated layers vary substantially in size and distribution throughout the Valley. In general, the unconsolidated layers increase in thickness as you move towards Cook Inlet. (Jokela, Munter, Evans, 1991). Throughout the area, numerous confining layers ranging from less than 1- to 60-feet thick, separate the unconsolidated layers.



Figure 2. Map showing regional ground-water flow in Matanuska-Susitna Valley. (Jokela, Munter and Evans, 1991)

In the Mat-Su Valley, the groundwater is primarily recharged by snowmelt and precipitation infiltrating into the foothill slopes of the Talkeetna or Chugach Mountains and by direct precipitation and snowmelt throughout the study area.

Groundwater flow in the confined aquifer is generally, north to south in the central region of the valley, toward the Matanuska River in the eastern region and the slope is predominantly northeast to northwest in the western region. (*Jokela, Munter and Evans, 1991*) (Figure 2). The direction of groundwater flow in the upper unconfined aquifer's are more variable due to the influence from surficial topography as well as its close connection with surface water bodies. (*Jokela, Munter and Evans, 1991*) (Figure 2).

### **DEAD DOG SALOON B&S PUBLIC WATER SOURCE**

Dead Dog Saloon B&S public water source is located in the Meadow Creek watershed. The system is a Class B public drinking water source and is owned and operated by B&J Ventures, Inc. The source consists of one well near the junction of Pittman Road and the Parks Highway. It is located at an elevation of approximately 280 feet above sea level. The well is located on the east end of the property and it is inferred to tap the underlying, unconfined aquifer. According to the well log, the Dead Dog Saloon B&S well does not appear to be grouted and penetrates sand and gravel and silty sand and gravel. The well was apparently drilled to a depth of 120 feet, but gravel packed to 70 feet and cemented off to 62 feet. The well is cased to a depth of 62 feet and slotted between 52 and 57 feet below land surface in sand and gravel. Based on an engineer's report of a flow test, the static water level is about 13 feet below land surface.

This water source operates year round. The Dead Dog Saloon B&S drinking water source is assumed to serve no residents and approximately 40 non-residents through one service connection.

### **ASSESSMENT AND PROTECTION AREA FOR DEAD DOG SALOON B&S DRINKING WATER SOURCE**

The Drinking Water Protection and Assessment Area that has been established for Dead Dog Saloon B&S is the area that is most sensitive to contamination. This area has served as a basis for assessing the risk of the drinking water source to contamination. This zone around the drinking water source is the most critical area for the preservation of the quality of the drinking water for this source. For simplicity, this area will be known as your Drinking Water Protection Area and will serve as the area of focus for voluntary protection efforts.

Groundwater recharge for the Dead Dog Saloon B&S water system enters the aquifer system through infiltration of direct precipitation within the area. An analytical calculation was used to calculate the size and shape of the area that contributes water to the well. The input parameters describing the attributes of the aquifer in this calculation were adopted from well logs from the surrounding area and from past studies (*Jokela, Munter and Evans, 1991*). This analytical calculation was used as a guide as the first step in establishing the protection area for Dead Dog Saloon B&S. Additional methods were further employed to take into account any uncertainties in groundwater flow and aquifer characteristics in an attempt to arrive at a meaningful and conservative protection area with respect to public health (Please refer to the Guidance Manual for Class B Public Water Systems for additional information).

The Drinking Water Protection Areas established for wells by the Alaska Department of Environmental Conservation are separated into zones. These zones correspond to a time-of-travel. Time-of-travel is the time required for water to move in the saturated zone of the ground from a specific point to the well. The Drinking Water Protection Areas for Dead Dog Saloon B&S contain four zones, Zone A, Zone B, Zone C and Zone D (See Map 1 in Appendix A). Zone A corresponds to the area between the well and the distance equal to  $\frac{1}{4}$  of the distance of the 2-year time-of-travel. Depending on where a contaminant source is located within Zone A, travel time for a contaminant to the well may be on the order of several days to several hours. Zone A also extends downgradient from the well to take into account the area of the aquifer that is influenced by pumping of the well.

The Zone B protection area for Dead Dog Saloon B&S corresponds to a time-of-travel of less than two years and extends eastward. The Zone C protection area extends from the 2-year time of travel to the 5-year time of travel. Lastly, Zone D extends from Zone C to the end of the protection area, roughly 1.2 miles from the Dead Dog Saloon B&S well.

### **INVENTORY OF POTENTIAL AND EXISTING CONTAMINANT SOURCES**

The Drinking Water Protection Program has completed an inventory of potential and existing sources of contamination within Dead Dog Saloon B&S's Drinking Water Protection Area. This survey was completed through a search of agency records and other publicly available information, as well as a reconnaissance of the area surrounding the well.

Potential sources of contamination to drinking water supplies cover a wide range of categories and types. Potential drinking water contaminants are found within agricultural, residential, commercial, and industrial areas, but can also occur within areas that have little or

no development.

For the basis of this assessment and all Class B public water system assessments, three categories of drinking water contaminants were inventoried. They include:

- Bacteria and viruses;
- Nitrates and/or nitrites;
- Volatile organic chemicals;

Map 2 in Appendix C depicts the Contaminant Source Inventory for Dead Dog Saloon B&S. Inventoried potential sources of contamination within Zones A through Zone B were associated with residential and commercial type activities (see Table 1 in Appendix B). Zone C contains undeveloped property. Only high and very high potential and existing sources of contamination were inventoried within Zone D. None were identified in Zone D. Below is a summary of the contaminant sources inventoried within the Dead Dog Saloon B&S protection area:

- Railroad Corridor;
- Nonresidential aboveground heating oil tanks;
- Single family septic systems

These potential contaminant sources present risk for all three categories of drinking water contaminants for Dead Dog Saloon B&S drinking water source.

### RANKING OF CONTAMINANT RISKS

Potential and existing sources of contamination have been identified, sorted, and ranked according to what type and level of risk they represent. Ranking of contaminant risks for a “potential” or “existing” source of contamination is a function of toxicity and volumes of specific contaminants associated with that source. Contaminant risks are further a function of the number and density of those types of contaminant sources as well as the proximity of those sources to the well.

### VULNERABILITY OF DEAD DOG SALOON B&S DRINKING WATER SOURCES

Vulnerability of a drinking water source to contamination is a combination of two factors:

- Natural susceptibility; and
- Contaminant risks

Each of the three categories of drinking water contaminants has been analyzed and an overall vulnerability score of 0 to 100 is ultimately assigned:

Natural Susceptibility (0 – 50 points)

+

Contaminant Risks (0 – 50 points)

=

Vulnerability of the Drinking Water Source to Contamination (0 – 100).

A score for the Natural Susceptibility is achieved by analyzing the properties of the well and the aquifer.

Susceptibility of the Wellhead (0 – 25 Points)

+

Susceptibility of the Aquifer (0 – 25 Points)

= Natural Susceptibility (Susceptibility of the Well) (0 – 50 Points)

Dead Dog Saloon B&S’s well is completed in an unconfined aquifer setting. Therefore, contaminants that enter the subsurface within the vicinity of the well and Drinking Water Protection Area may enter the aquifer uninhibited by the absence of any protective layer. It is unclear whether the well is grouted. For purposes of this study, it is assumed that the well is not grouted. The absence of grouting can allow the transport of contaminants from the surface along the well casing. Combining the susceptibility of the wellhead and the aquifer to contamination leads to a score (0 – 50 points) and rating of overall Susceptibility (See Appendix D). Table 1 shows the overall Susceptibility score and rating for Dead Dog Saloon B&S.

**Table 1. Natural Susceptibility - Susceptibility of the Wellhead and Aquifer to Contamination**

	Score	Rating
Susceptibility of the Wellhead	5	Low
Susceptibility of the Aquifer	17	High
Natural Susceptibility	22	Medium

Contaminant risks to a drinking water source depend on the type, number or density, and distribution of contaminant sources. Residential septic systems, nonresidential aboveground heating oil tanks and a railroad corridor contribute the highest risk for potential contamination to the Dead Dog Saloon B&S source of public drinking water.

A score (0 – 50 points) and rating of Contaminant Risks (See Appendix D) is assigned based on the findings of the Contaminant Source Inventory (Appendix B - Table

1 – Table 4). This portion of the analysis examines any existing or historical contamination that has been detected at the drinking water source through routine sampling. It also reviews contamination that has or may have occurred but has not arrived or been detected at the well. Table 2 summarizes the Contaminant Risks for each category of drinking water contaminants.

**Table 2. Contaminant Risks**

Contaminant Risks	Score	Rating
Bacteria and Viruses	12	Low
Nitrates and/or Nitrites	12	Low
Volatile Organic Chemicals	12	Low

Appendix D contains eight charts, which together form the ‘Vulnerability Analysis’ for a source water assessment for a public drinking water source. Chart 1 analyzes the ‘Susceptibility of the Wellhead’ to contamination by looking at the construction of the well and its surrounding area. Chart 2 analyzes the ‘Susceptibility of the Aquifer’ to contamination by looking at the naturally occurring attributes of the water source and influences on the groundwater system that might lead to contamination. Chart 3 analyzes ‘Contaminant Risks’ for the drinking water source with respect to bacteria and viruses. The ‘Contaminant Risks’ portion of the analysis considers potential sources of contaminants as well as a review of contamination that has or may have occurred but has not arrived or been detected at the well. Lastly, Chart 4 contains the ‘Vulnerability Analysis for Bacteria and Viruses’. Charts 5 through 8 contain the Contaminant Risks and Vulnerability Analysis for nitrates and nitrites and volatile organic chemicals, respectively.

Vulnerability of the drinking water source to contamination is the combination of susceptibility of the aquifer and the well with contaminant risks. Table 3 contains the overall vulnerability scores (0 – 100) and ratings for each of the three categories of drinking water contaminants (See Appendix D). Note: scores are rounded off to the nearest five.

**Table 3. Overall Vulnerability of Dead Dog Saloon B&S Public Drinking Water Source to Contamination by Category**

Category	Score	Rating
Bacteria and Viruses	35	Low
Nitrates and Nitrites	35	Low
Volatile Organic Chemicals	35	Low

Tables 2 through 4 in Appendix B contain the ranking of potential and existing sources of contamination with respect to bacteria and viruses, nitrates and/or nitrites, and volatile organic chemicals.

Overall, the contaminant risks for bacteria and viruses and nitrate/nitrites category are low with the nearby residential septic system driving the score. Combining the potential contamination risk for each category with the susceptibility of the well, yields an overall vulnerability to these contaminants as low for this source of public drinking water.

Nitrates and/or nitrites are found in natural background concentrations at the site, as elsewhere in Alaska. The sampling history of the Dead Dog Saloon B&S source water indicates low concentrations of nitrate were reported in the well in March 1994. (See Chart 6-Contaminant Risks for Nitrates/Nitrites in Appendix D). The reported nitrate contamination was less than 10% of the allowable limit (MCL) for this contaminant. Due to high solubility and weak retention by soil, nitrates are very mobile in soil, moving approximately the same rate as water. Nevertheless, the current nitrate concentration in the Dead Dog Saloon B&S water source remains at safe levels, with respect to human health.

There is an active gasoline station located south of the property beyond the Zone A protection area and two aboveground heating oil tanks located in close proximity to the well in Zone A. There are no records indicating any spills have occurred at the tanks in Zone A. The service station to the south is noted by the Alaska Department of Environmental Conservation as being a contaminated site and site cleanup and monitoring is proceeding. The public water system is not required to sample for volatile organic chemicals (VOCs), thus it is unknown if any VOCs from the heating oil tanks or the service station to the south are reaching the source. However, the well is located upgradient of the service station reducing the potential impact to groundwater at the well location.

## SUMMARY

A *Source Water Assessment* has been completed for the Dead Dog Saloon B&S source of public drinking water. The overall vulnerability of this source to contamination is **Low** for bacteria and viruses, nitrates and/or nitrites, and volatile organic chemicals. This assessment of contaminant risks can be used as a foundation for local voluntary protection efforts as well as a basis for the continuous efforts on the part of the Alaska Department of Environmental Conservation to protect public health. It is anticipated that *Source Water Assessments* will be updated every five years to reflect any changes in the vulnerability and/or susceptibility of the public drinking water source.



## REFERENCES CITED

Alaska Department of Community and Economic Development, 2001 [WWW document].  
URL [http://www.dced.state.ak.us/mra/CF\\_BLOCK.cfm](http://www.dced.state.ak.us/mra/CF_BLOCK.cfm).

Alaska Department of Labor, State of Alaska 2001 [WWW document]. URL <http://146.63.75.45/census2000/>.

Brabets, T., 1997, Precipitation map of Alaska, Web extension to the U.S. Geological Survey Water Resources for Alaska GIS datasets URL.<http://agdc.usgs.gov/data/usgs/water>.

Jokela, J.B., Munter, J.A., and Evans, J.G., 1991, Ground-water resources of the Palmer-Big Lake area, Alaska: a conceptual model. Division of Geological & Geophysical Surveys Reports of Investigations 90-4, State of Alaska Department of Natural Resources, Fairbanks, AK.

Western Regional Climate Center, 2000, August 24, Web extension to the *Western Regional Climate Center* [WWW document]. URL <http://www.wrcc.dri.edu/cgi-bin/cliMAIN.pl?akmatv>.

## **APPENDIX A**

### **Dead Dog Saloon B&S Drinking Water Protection Area**

## **APPENDIX B**

### **Contaminant Source Inventory and Risk Ranking for Dead Dog Saloon B&S**

## **APPENDIX C**

### **Dead Dog Saloon B&S Drinking Water Protection Area and Potential & Existing Contaminant Sources**

## **APPENDIX D**

### **Vulnerability Analysis for Dead Dog Saloon B&S Public Drinking Water Source**

<b>Contaminant Source Category</b>	<b>Contaminant Source ID</b>	<b>CS ID Tag</b>	<b>Zone</b>	<b>Location</b>	<b>Map</b>	<b>Comments</b>
<i>Septic systems (serves one single-family home)</i>	<i>R2</i>	<i>R2-1</i>	<i>A</i>	<i>Septic tank ~50 ft from Dead Dog Saloon Well</i>	<i>2</i>	
<i>Tanks, heating oil, nonresidential (aboveground)</i>	<i>T14</i>	<i>T14-1</i>	<i>A</i>	<i>East of Dead Dog Saloon Well</i>	<i>2</i>	
<i>Tanks, heating oil, nonresidential (aboveground)</i>	<i>T14</i>	<i>T14-2</i>	<i>A</i>	<i>East of Dead Dog Saloon Well</i>	<i>2</i>	
<i>Rail corridors</i>	<i>X30</i>	<i>X30-1</i>	<i>A</i>	<i>North of Parks Hwy</i>	<i>2</i>	

Table 2

Potential and Existing Sources of Contamination for Dead Dog Saloon  
Bacteria and Viruses

PWSID 221240.001

<b>Contaminant Source Category</b>	<b>Contaminant Source ID</b>	<b>CS ID Tag</b>	<b>Zone</b>	<b>Risk Ranking for Analysis</b>	<b>Overall Rank After Analysis</b>	<b>Location</b>	<b>Map</b>	<b>Comments</b>
<i>Septic systems (serves one single-family home)</i>	<i>R2</i>	<i>R2-1</i>	<i>A</i>	<i>Very Low</i>	<i>2</i>	<i>Septic tank ~50 ft from Dead Dog Saloon Well</i>	<i>2</i>	

Table 3

Potential and Existing Sources of Contamination for Dead Dog Saloon  
Nitrates and Nitrites

PWSID 221240.001

<i>Contaminant Source Category</i>	<i>Contaminant Source ID</i>	<i>CS ID Tag</i>	<i>Zone</i>	<i>Risk Ranking for Analysis</i>	<i>Overall Rank After Analysis</i>	<i>Location</i>	<i>Map</i>	<i>Comments</i>
<i>Septic systems (serves one single-family home)</i>	<i>R2</i>	<i>R2-1</i>	<i>A</i>	<i>Very Low</i>	<i>1</i>	<i>Septic tank ~50 ft from Dead Dog Saloon Well</i>	<i>2</i>	



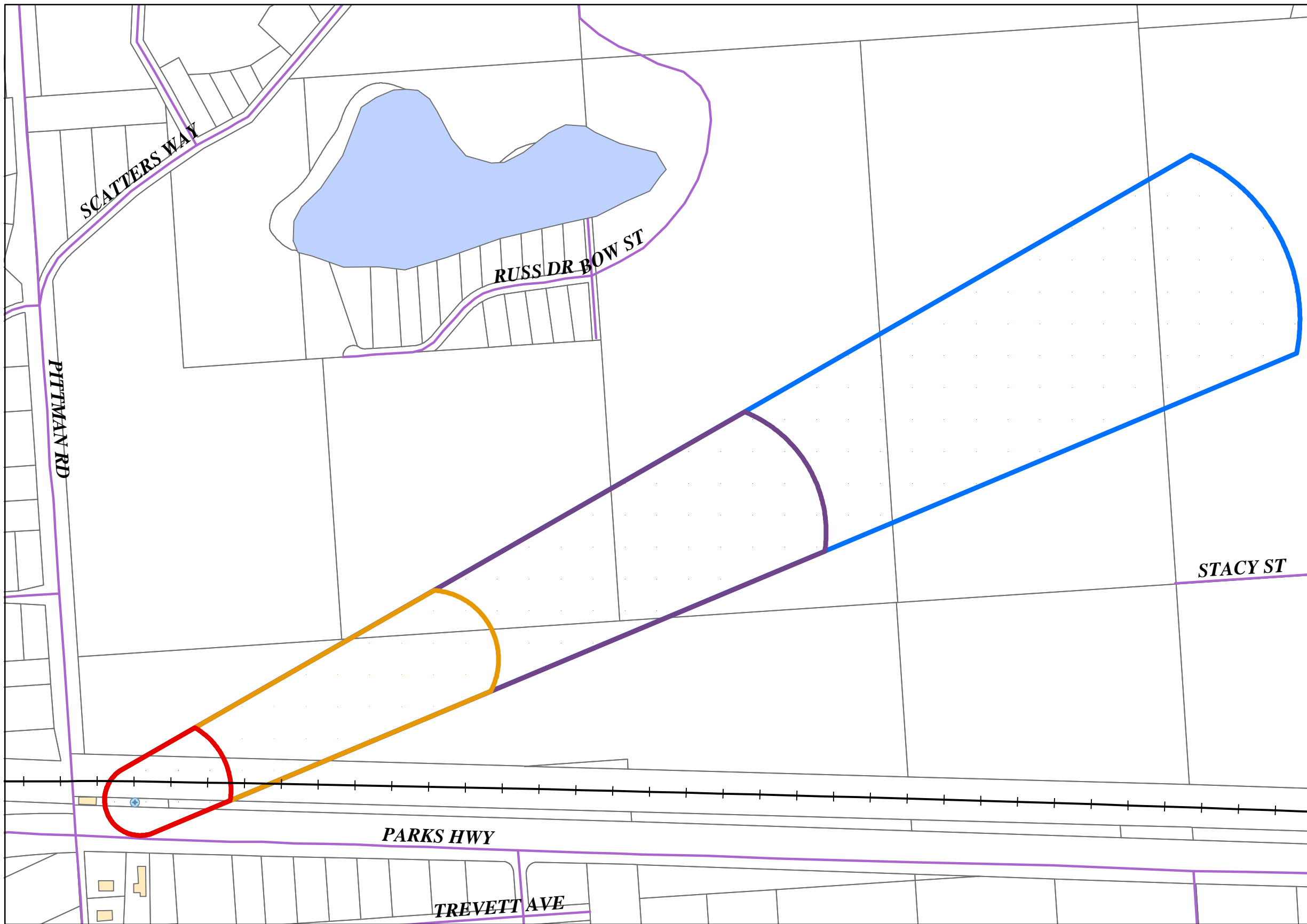
Table 4

Potential and Existing Sources of Contamination for Dead Dog Saloon  
Volatile Organic Chemicals (VOCs)

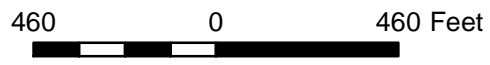
PWSID 221240.001

<b>Contaminant Source Category</b>	<b>Contaminant Source ID</b>	<b>CS ID Tag</b>	<b>Zone</b>	<b>Risk Ranking for Analysis</b>	<b>Overall Rank After Analysis</b>	<b>Location</b>	<b>Map</b>	<b>Comments</b>
<i>Tanks, heating oil, nonresidential (aboveground)</i>	<i>T14</i>	<i>T14-1</i>	<i>A</i>	<i>Low</i>	<i>1</i>	<i>East of Dead Dog Saloon Well</i>	<i>2</i>	
<i>Tanks, heating oil, nonresidential (aboveground)</i>	<i>T14</i>	<i>T14-2</i>	<i>A</i>	<i>Low</i>	<i>2</i>	<i>East of Dead Dog Saloon Well</i>	<i>2</i>	
<i>Rail corridors</i>	<i>X30</i>	<i>X30-1</i>	<i>A</i>	<i>Low</i>	<i>3</i>	<i>North of Parks Hwy</i>	<i>2</i>	
<i>Septic systems (serves one single-family home)</i>	<i>R2</i>	<i>R2-1</i>	<i>A</i>	<i>Very Low</i>	<i>4</i>	<i>Septic tank ~50 ft from Dead Dog Saloon Well</i>	<i>2</i>	

# Drinking Water Protection for Dead Dog Saloon B & S



- Dead Dog Saloon B & S Well
- Railroad
- MSB roads
- Buildings
- Lakes and Streams
- MSB parcel core
- Zone A Protection Area**
- Several Months Travel Time
- Zone B Protection Area**
- Less Than 2-Years Travel Time
- Zone C Protection Area**
- Less Than 5-Years Travel Time
- Zone D Protection Area**
- Less Than 10-Years Travel Time

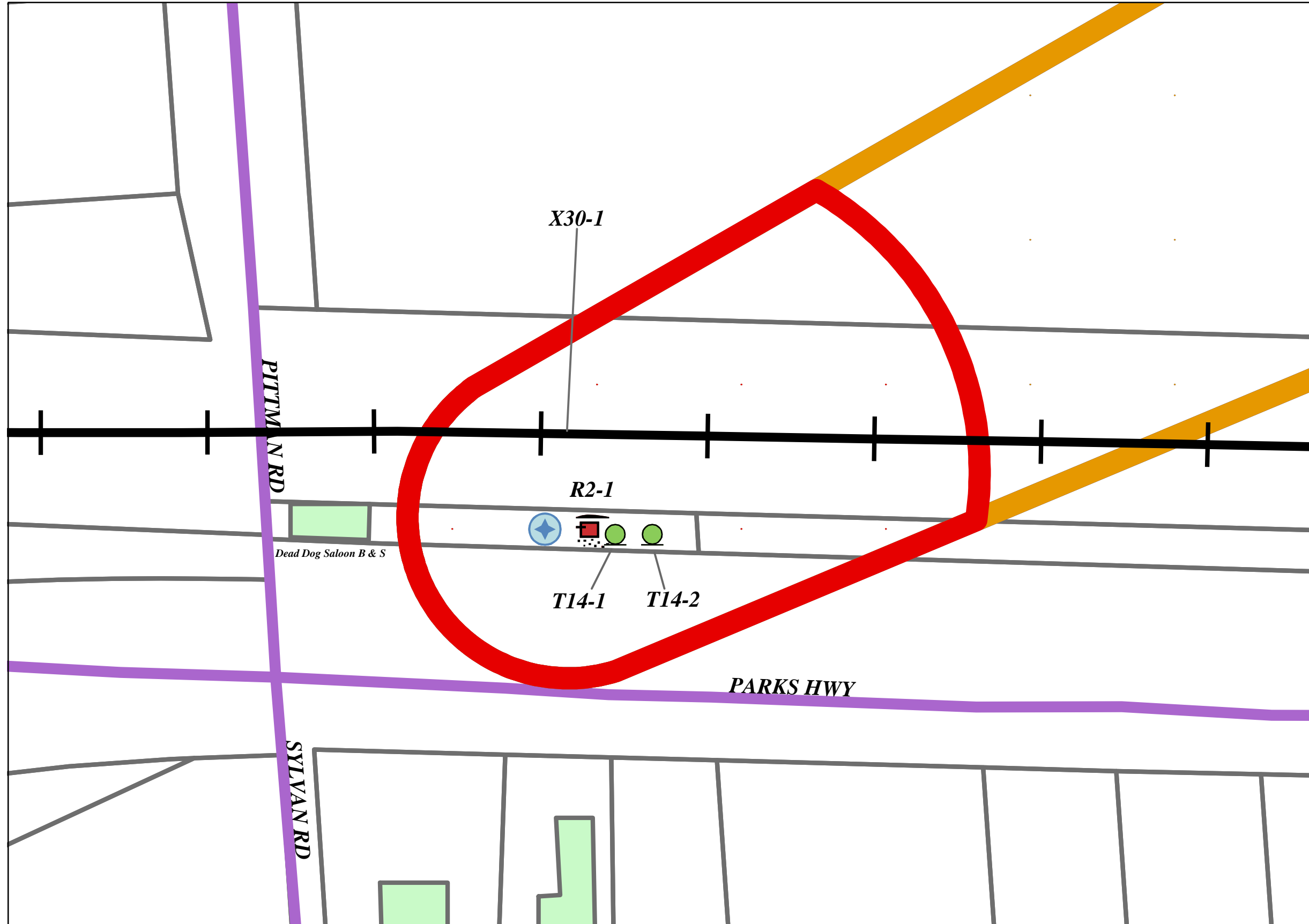


PWSID 221240.001

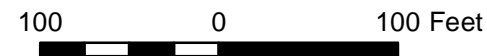


## Map 1

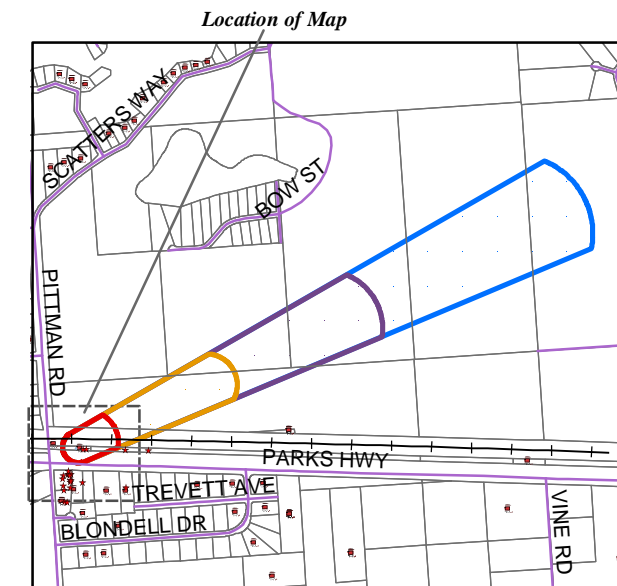
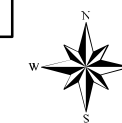
# Drinking Water Protection for Dead Dog Saloon B & S and Potential and Existing Sources of Contamination



- Dead Dog Saloon B & S Well
- Single Family Septic System
- Nonresidential Heating Oil Aboveground Storage Tanks (T14)
- Railroad
- MSB roads
- Buildings
- Lakes and Streams
- MSB parcel core
- Zone A Protection Area**  
 Several Months Travel Time
- Zone B Protection Area**  
 Less Than 2-Years Travel Time
- Zone C Protection Area**  
 Less Than 5-Years Travel Time
- Zone D Protection Area**  
 Less Than 10-Years Travel Time

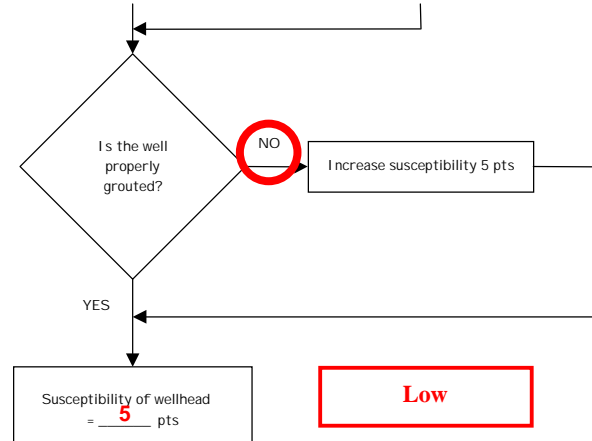
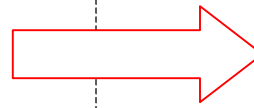
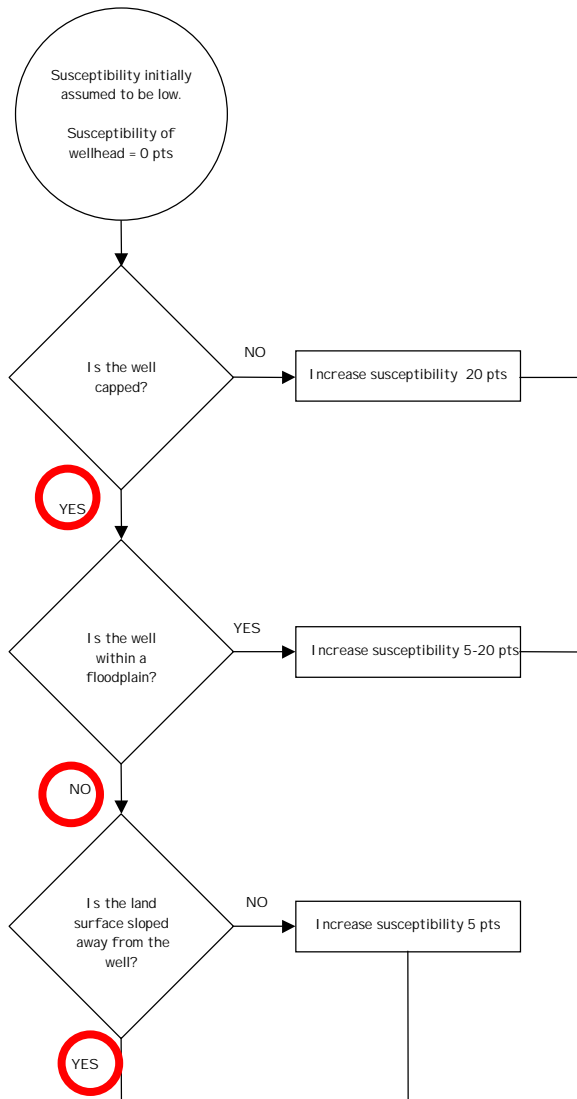


PWSID 221240.001



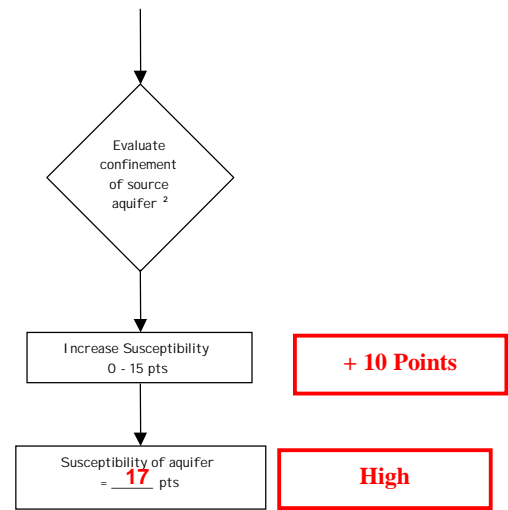
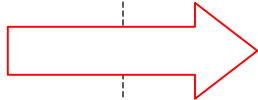
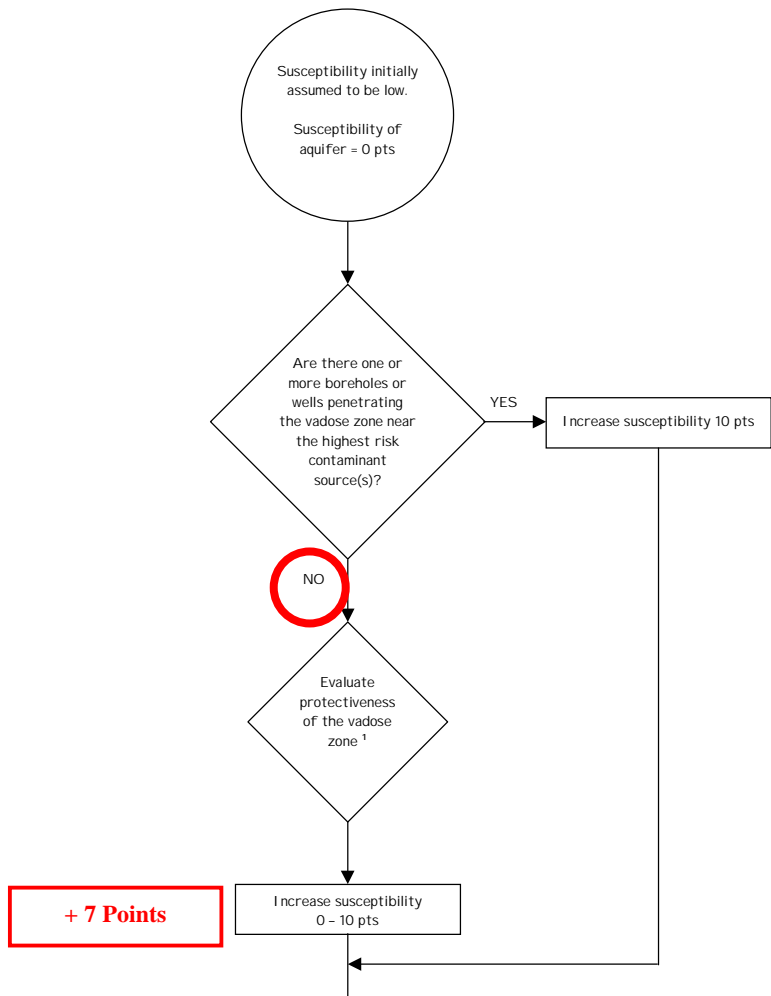
**Map 2**

**Chart 1. Susceptibility of the Wellhead – Dead Dog Saloon and B & S**



<u>Wellhead Susceptibility Ratings</u>	
20 to 25 pts	very high
15 to < 20 pts	high
10 to < 15 pts	medium
< 10	low

Chart 2. Susceptibility of the Aquifer – Dead Dog Saloon and B & S



**1. Protectiveness of the Vadose Zone**

- net recharge (function of precipitation, slope of land surface, & permeability of soils) [0 - 10 pts; 50% weight]
- depth to water table (unconfined aquifer) or top of confining layer (confined aquifer) [interpolate linearly: 100' - 20', 0 - 5 pts; 20' - 0', 5 - 10 pts; 50% weight]

Precipitation = 20"/Yr. = 4 pts.  
Soil = Silt/Loam = 4 pts.  
Slope = 0-3% = 10 pts.  
18 pts./3 = 6 pts.  
6 pts. X 50% = 3 pts.

Depth to water table = 13 feet  
Interpolate linearly = 7 pts.  
7 pts. X 50% = 3.5 pts.

**Total = 7 of 10 Points**

**2. Degree of Confinement**

- confined verses unconfined aquifer [confined:  $K \leq 10^{-6}$  cm/s, minimum thickness of at least one layer = 20 ft, interpolate linearly 100' - 20', 0 - 10 pts; unconfined = 15 pts; 65% weight]
- density of boreholes and wells penetrating the confining layer (confined aquifer) or the water table (unconfined aquifer) [confined: 0 - 15 pts; unconfined = 15 pts; 35% weight]

**Unconfined Aquifer**

Well depth 62 feet = 10 pts.  
Few boreholes/wells in capture zone = 10 pts.

10(65%) + 10(35%) = 10 pts.

**Total = 10 of 15 Points**

**Aquifer Susceptibility Ratings**

20 to 25 pts	very high
15 to < 20 pts	high
10 to < 15 pts	medium
< 10	low

**High**

**Chart 3. Contaminant risks for Dead Dog Saloon and B & S – Bacteria & Viruses**

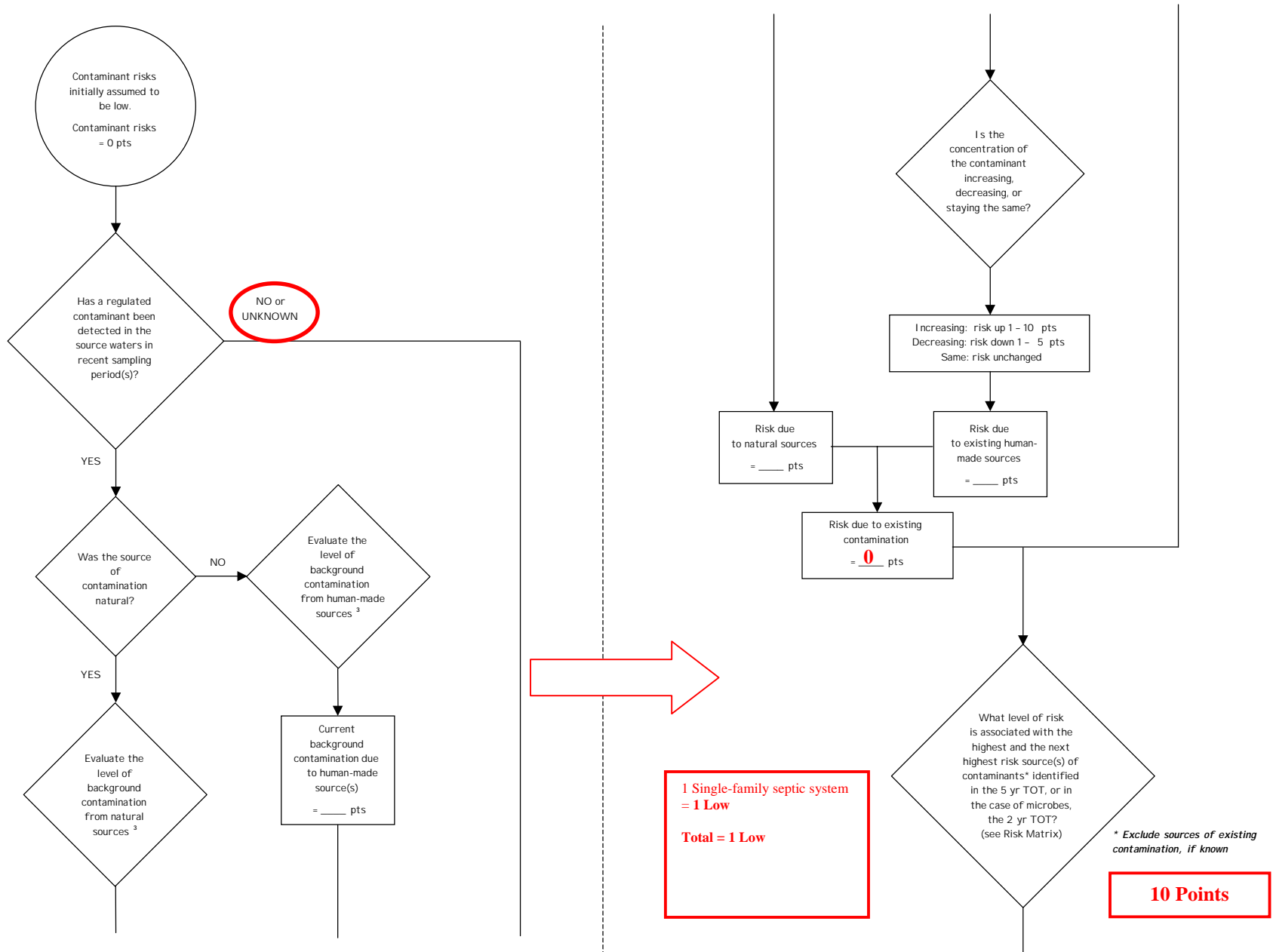


Chart 3. Contaminant risks for Dead Dog Saloon and B & S- Bacteria & Viruses (Continued)

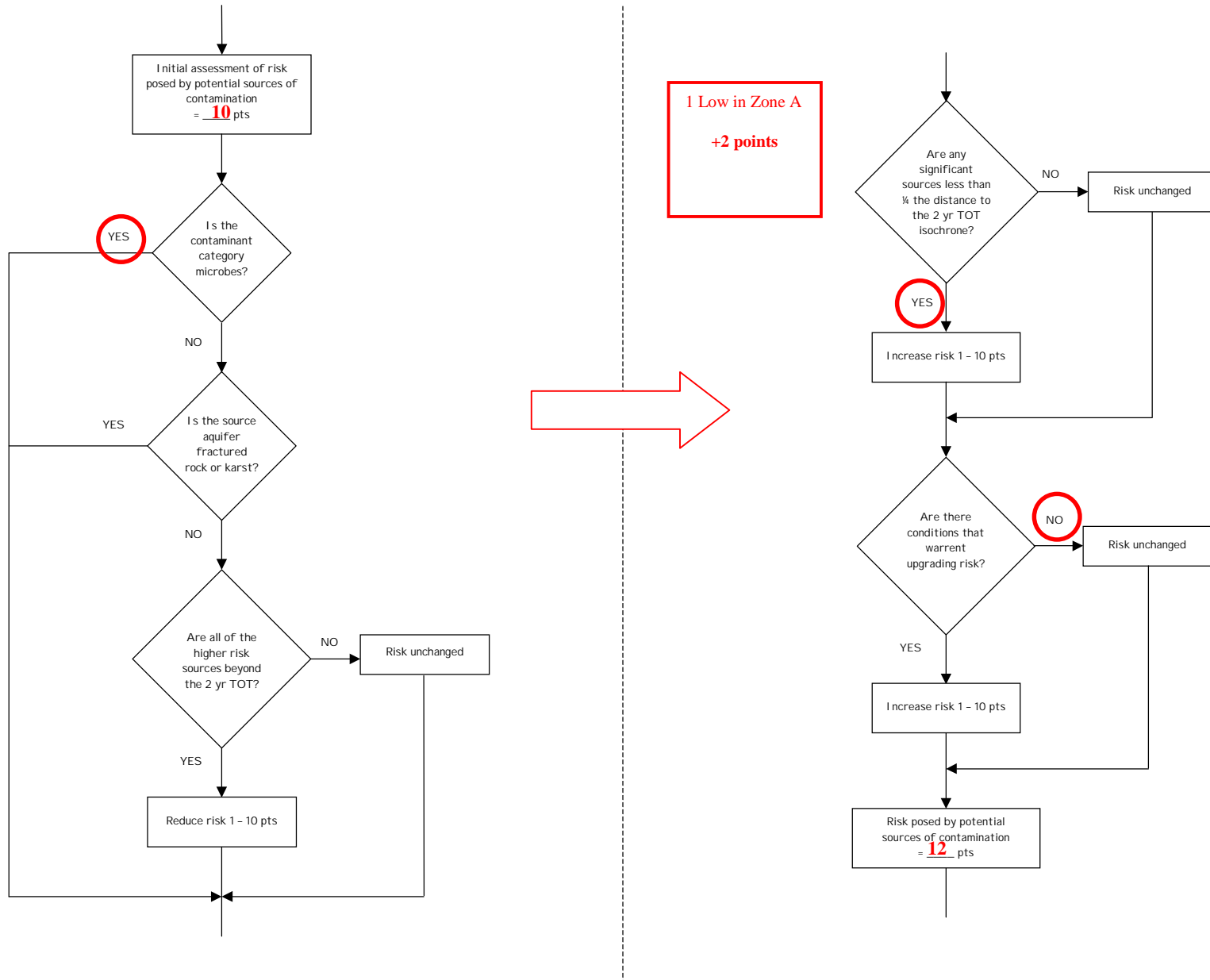
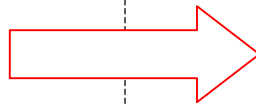
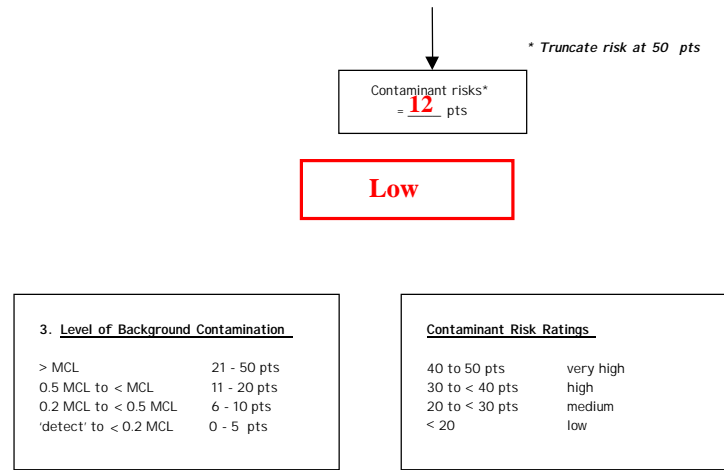
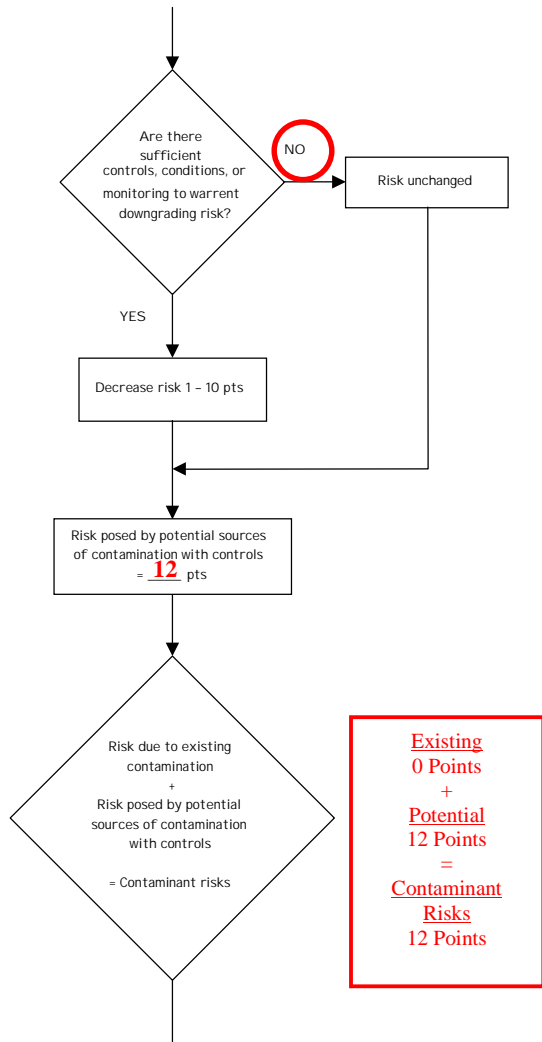


Chart 3. Contaminant risks for Dead Dog Saloon B & S- Bacteria & Viruses (Continued)



<u>Sample Date</u>	<u>Result</u>
3/28/01	Not Detected (ND)
12/28/00	ND
10/04/00	ND
5/11/00	ND
9/27/00	ND

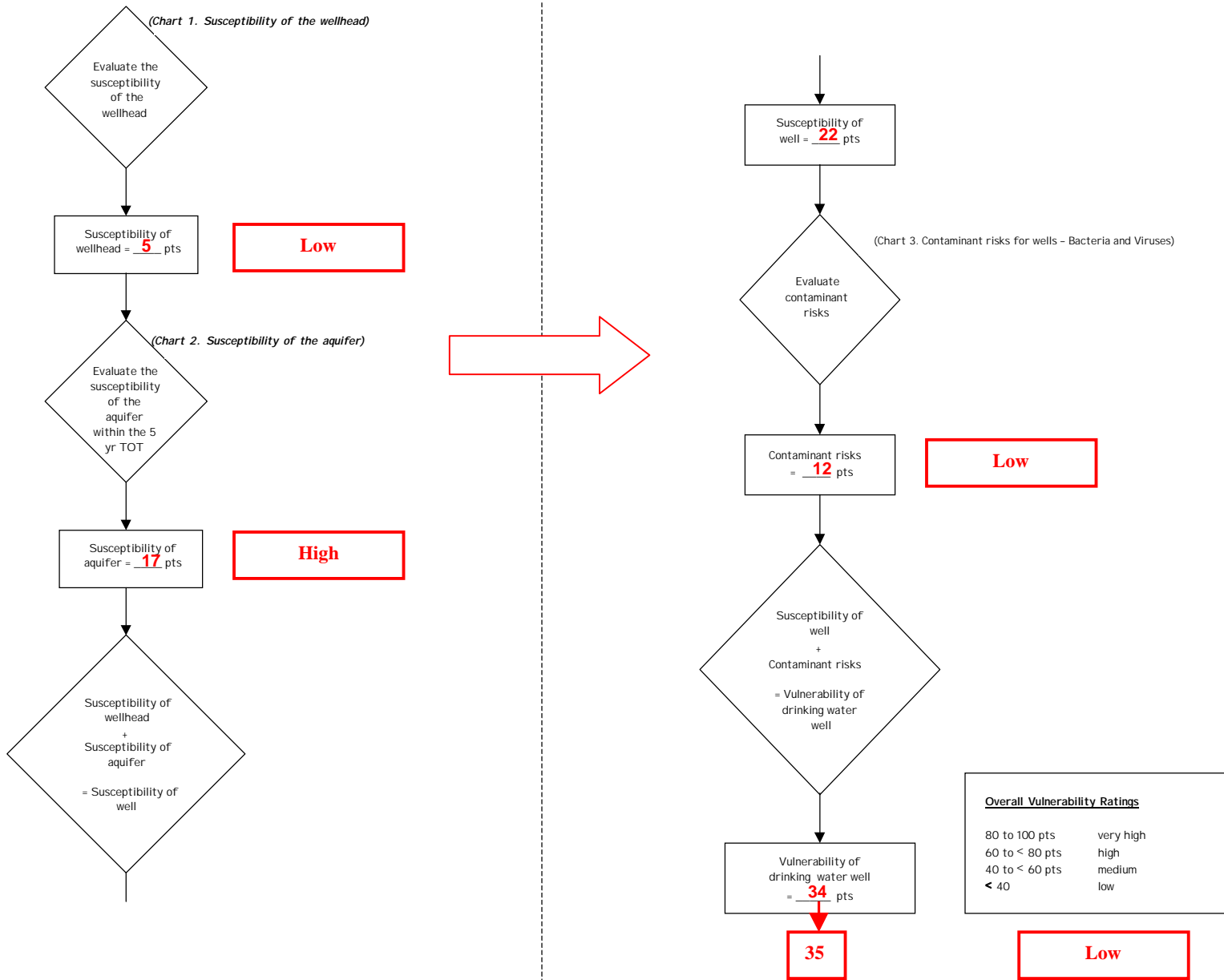


**Table 1. Risk Matrix for Contaminant Sources for Dead Dog Saloon and B & S– Bacteria & Viruses**

**Level of Risk Associated with the Highest Risk Sources**

<b>Next Highest Risk Sources(s)</b>	Total 1 Low	<b>LOW</b> 10 pts	<b>MEDIUM</b> 20 pts	<b>HIGH</b> 30 pts	<b>VERY HIGH</b> 40 pts
	<b>Low</b>	≥ 10 sources + 10 pts	≥ 10 sources + 5 pts	≥ 20 sources + 5 pts	—
	<b>Medium</b>	—	≥ 2 sources + 5 pts	≥ 5 sources + 5 pts	≥ 10 sources + 5 pts
	<b>High</b>	—	—	1 source + 10 pts	≥ 2 sources + 10 pts
	<b>Very High</b>	—	—	—	1 source + 10 pts

**Chart 4. Vulnerability analysis for Dead Dog Saloon and B & S – Bacteria & Viruses**



**Chart 5. Contaminant risks for Dead Dog Saloon and B & S – Nitrates and Nitrites**

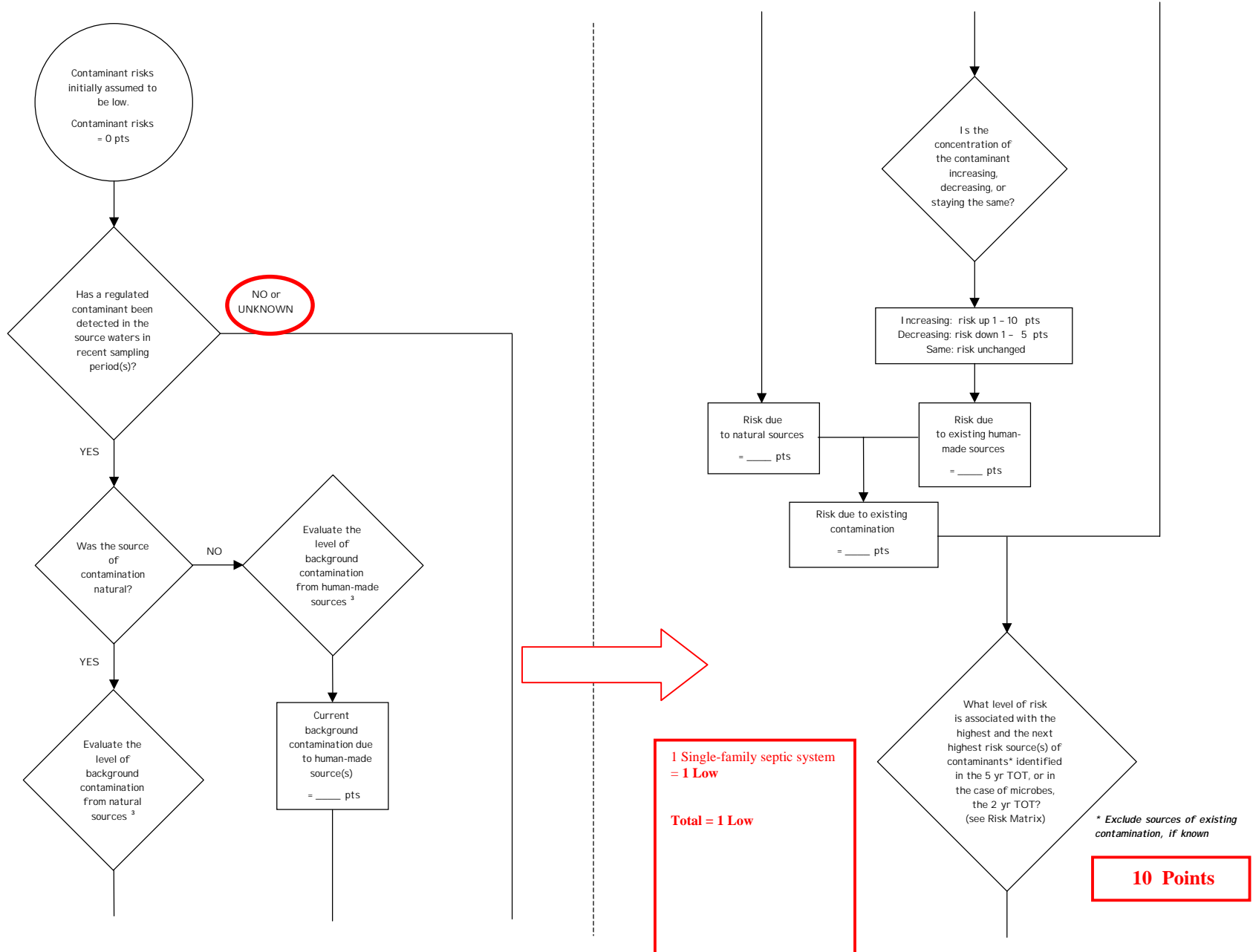
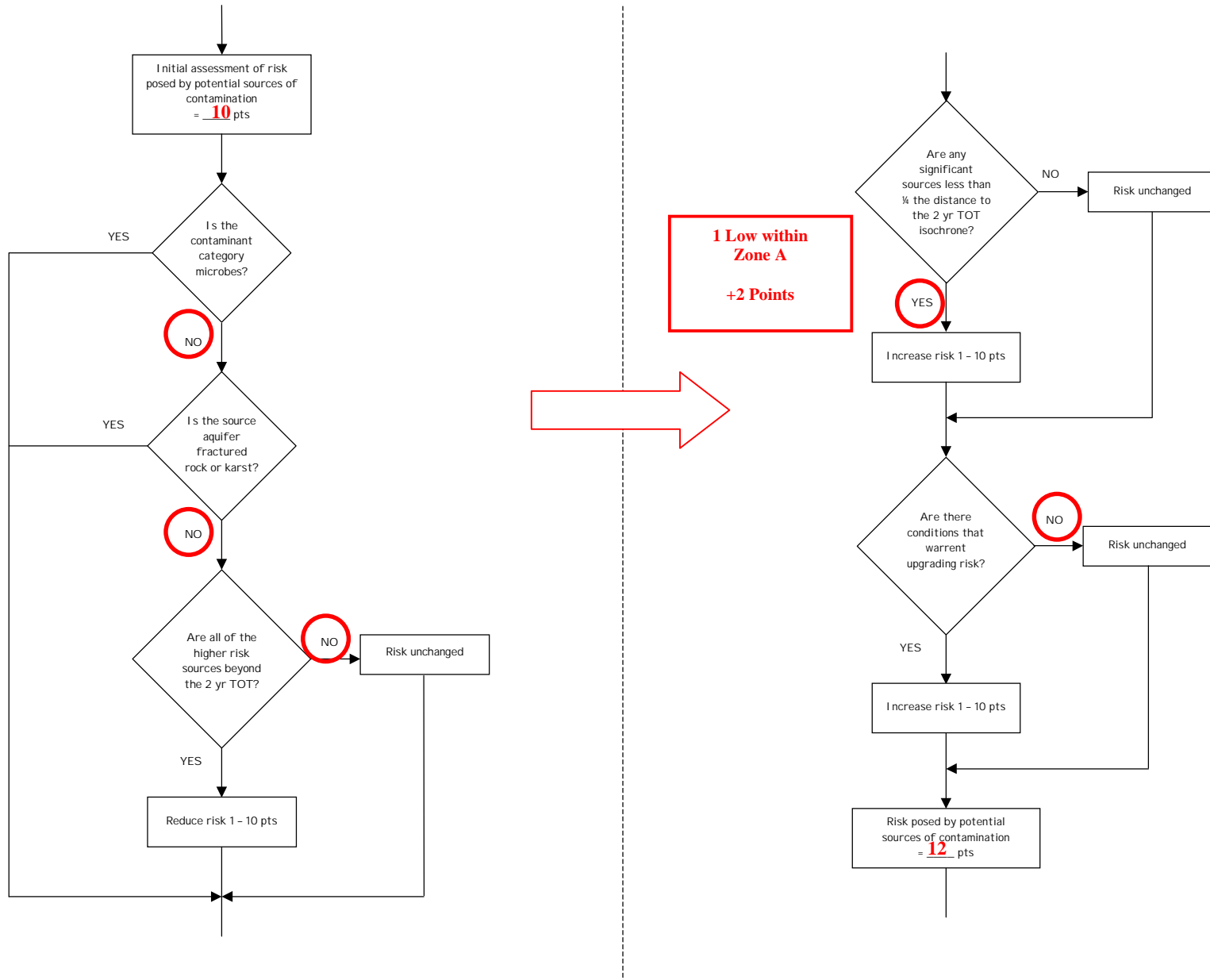
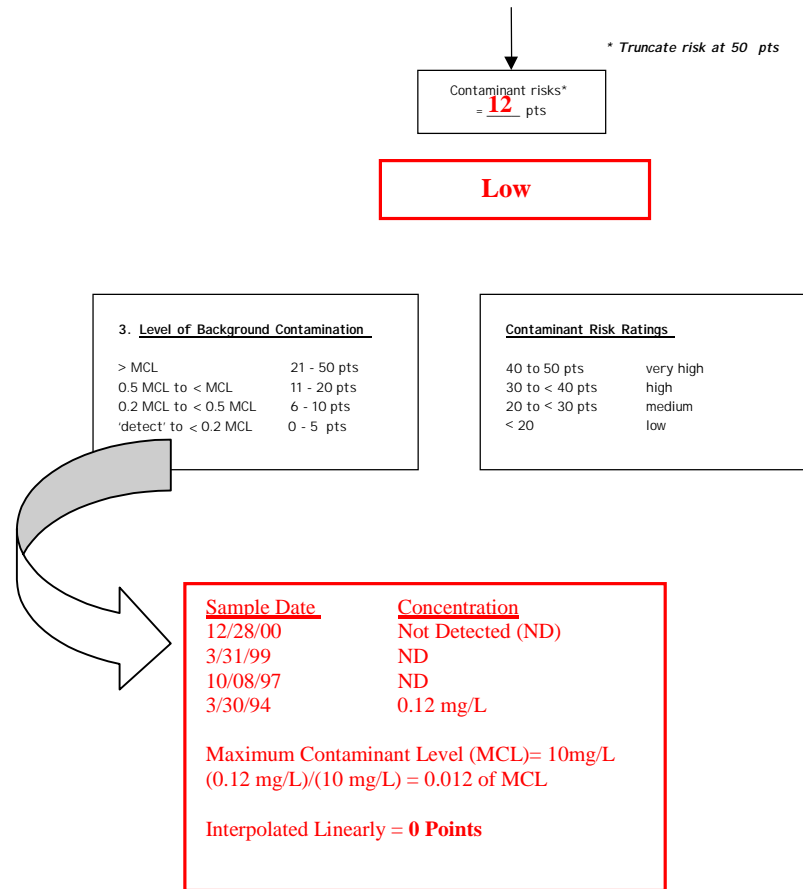
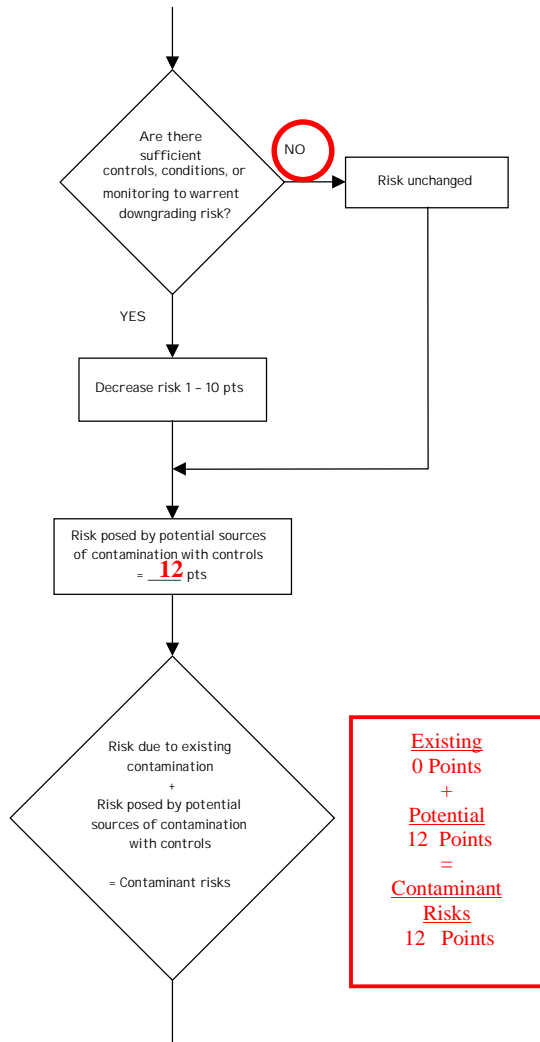


Chart 5. Contaminant risks for Dead Dog Saloon and B & S – Nitrates and Nitrites (Continued)



**Chart 5. Contaminant risks for Dead Dog Saloon and B & S – Nitrates and Nitrites (Continued)**

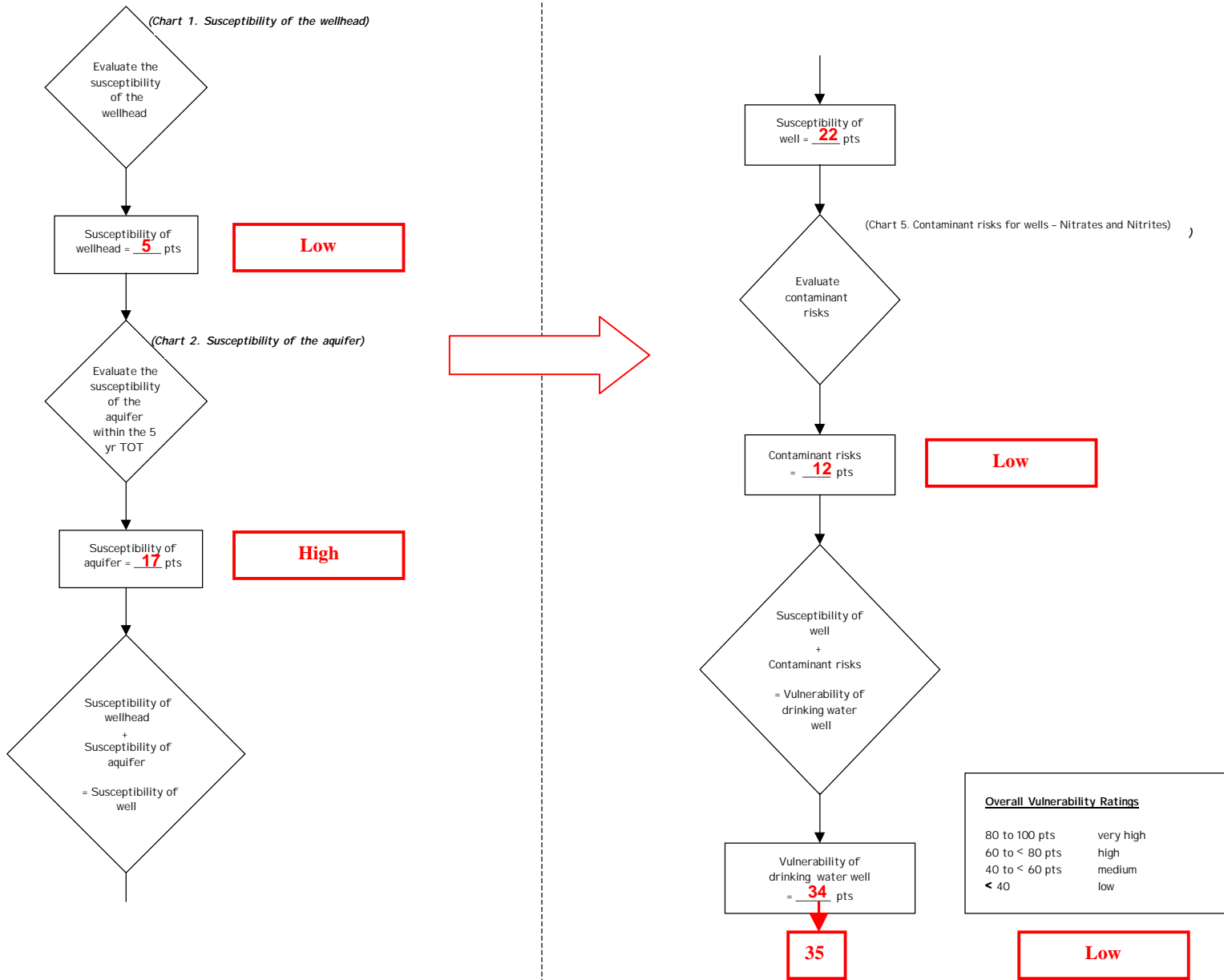


**Table 2. Risk Matrix for Contaminant Sources for Dead Dog Saloon and B & S – Nitrates and Nitrites**

**Level of Risk Associated with the Highest Risk Sources**

Total 1 Low	<b>LOW</b> 10 pts	<b>MEDIUM</b> 20 pts	<b>HIGH</b> 30 pts	<b>VERY HIGH</b> 40 pts
<b>Low</b>	≥ 10 sources + 10 pts	≥ 10 sources + 5 pts	≥ 20 sources + 5 pts	—
<b>Medium</b>	—	≥ 2 sources + 5 pts	≥ 5 sources + 5 pts	≥ 10 sources + 5 pts
<b>High</b>	—	—	1 source + 10 pts	≥ 2 sources + 10 pts
<b>Very High</b>	—	—	—	1 source + 10 pts

**Chart 6. Vulnerability analysis for Dead Dog Saloon and B & S – Nitrates and Nitrites**



**Chart 7. Contaminant risks for Dead Dog Saloon and B & S – Volatile Organic Chemicals**

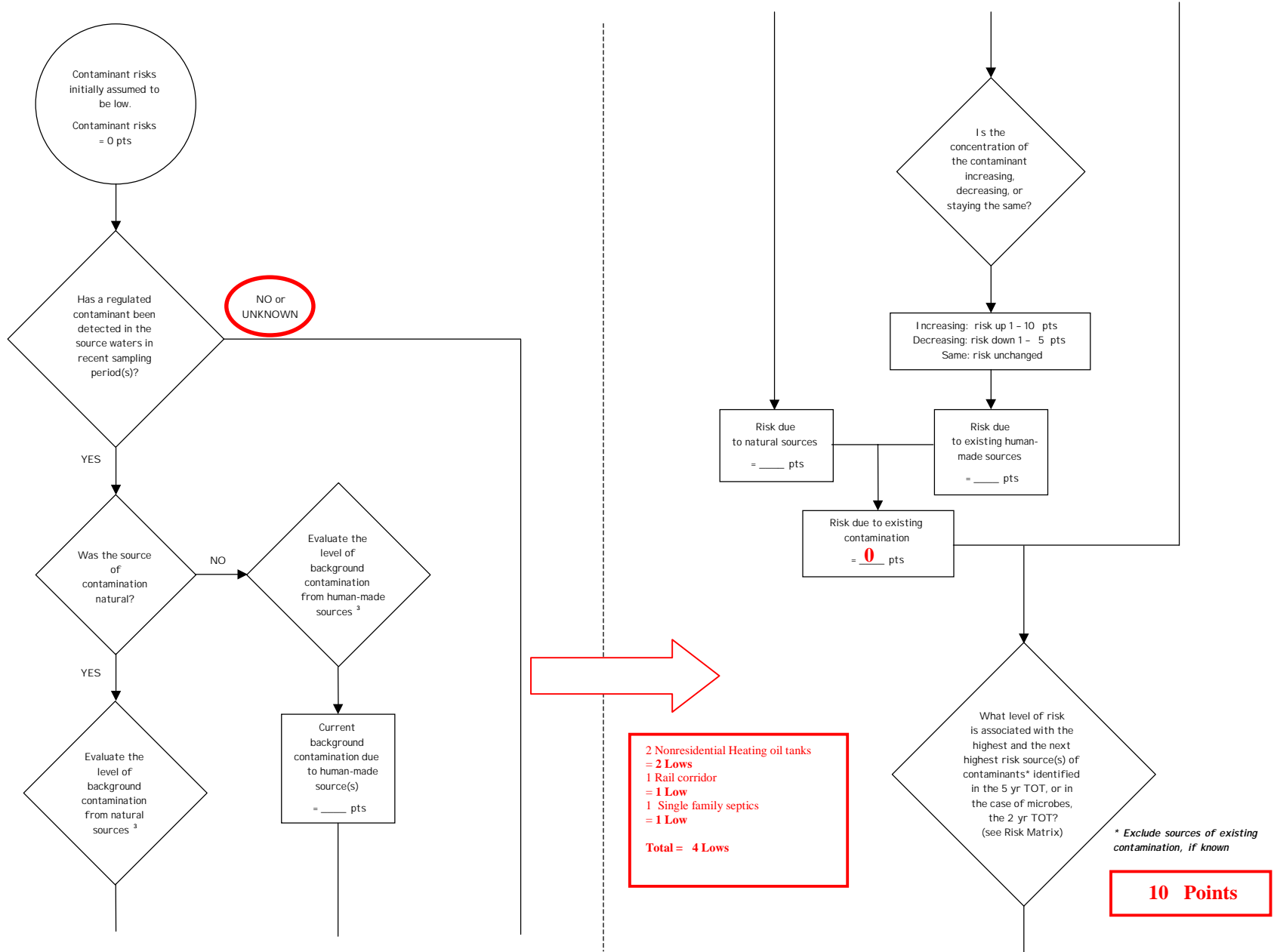
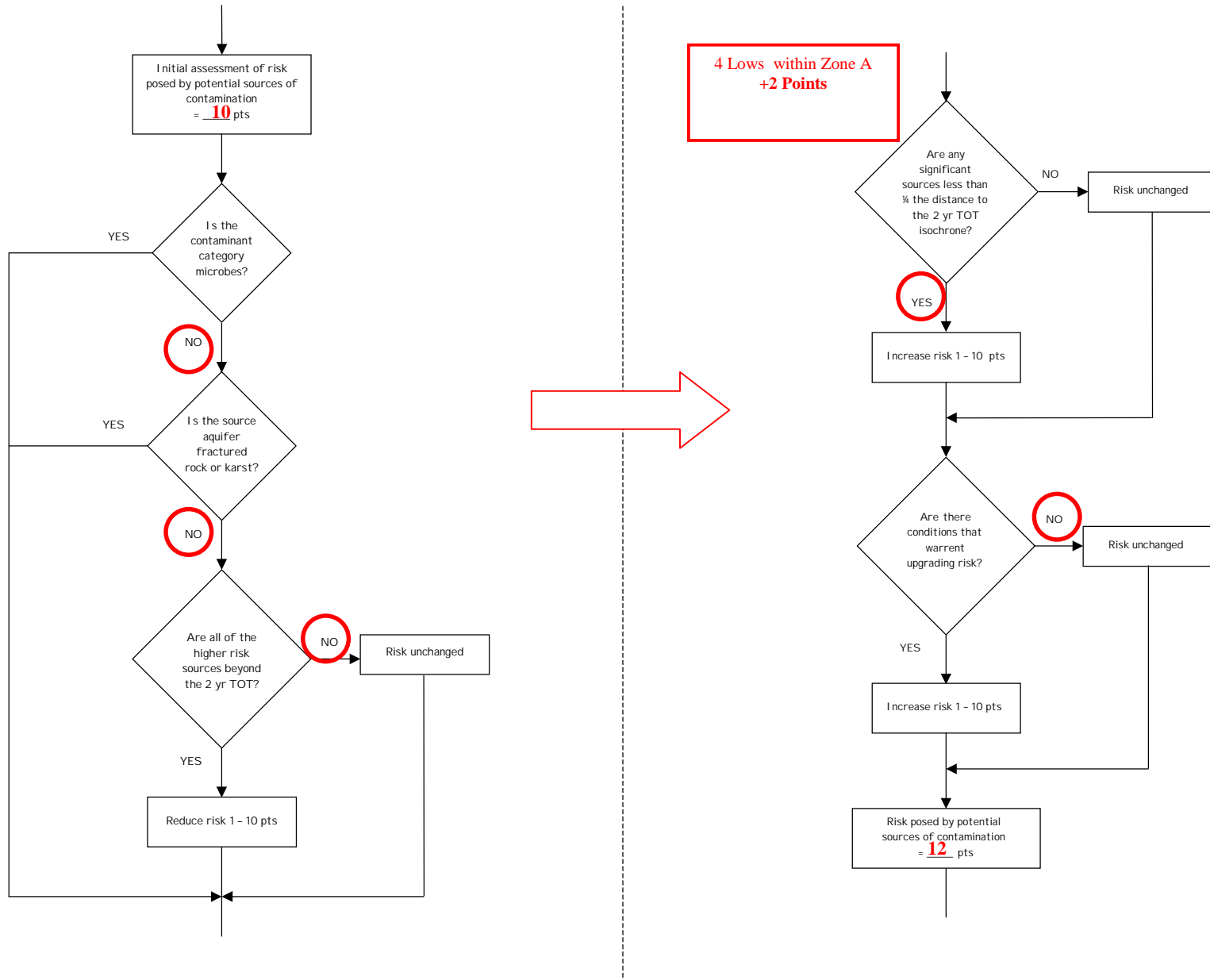
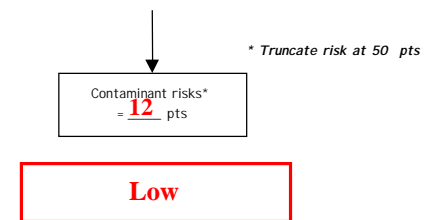
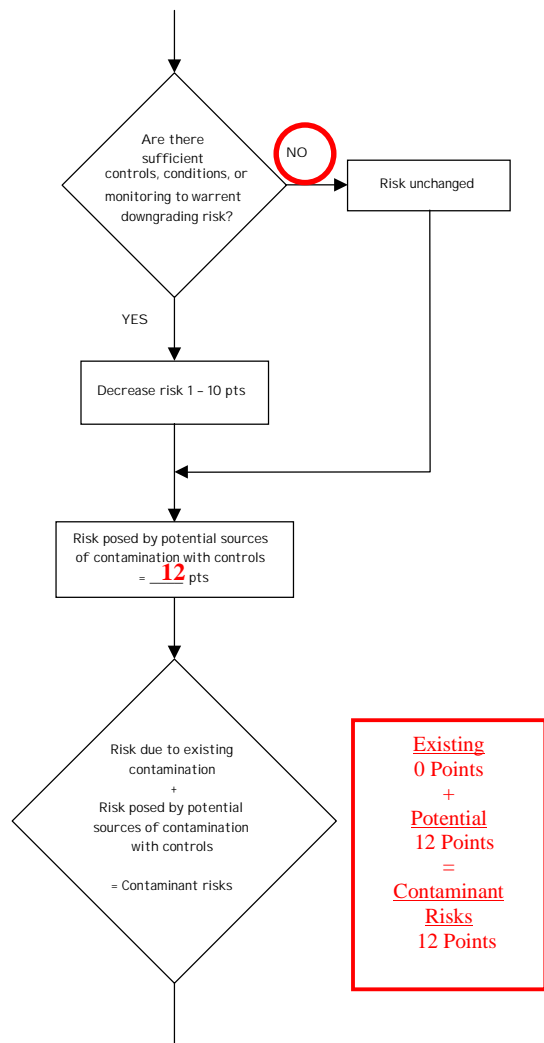




Chart 7. Contaminant risks for Dead Dog Saloon And B & S – Volatile Organic Chemicals (Continued)



**Chart 7. Contaminant risks for Dead Dog Saloon and B & S – Volatile Organic Chemicals (Continued)**



3. Level of Background Contamination

> MCL	21 - 50 pts
0.5 MCL to < MCL	11 - 20 pts
0.2 MCL to < 0.5 MCL	6 - 10 pts
'detect' to < 0.2 MCL	0 - 5 pts

Contaminant Risk Ratings

40 to 50 pts	very high
30 to < 40 pts	high
20 to < 30 pts	medium
< 20	low

**Table 3. Risk Matrix for Contaminant Sources for Dead Dog Saloon and B & S – Volatile Organic Chemicals**

**Level of Risk Associated with the Highest Risk Sources**

Total 4 Lows	<b>LOW</b> 10 pts	<b>MEDIUM</b> 20 pts	<b>HIGH</b> 30 pts	<b>VERY HIGH</b> 40 pts
<b>Low</b>	≥ 10 sources + 10 pts	≥ 10 sources + 5 pts	≥ 20 sources + 5 pts	—
<b>Medium</b>	—	≥ 2 sources + 5 pts	≥ 5 sources + 5 pts	≥ 10 sources + 5 pts
<b>High</b>	—	—	1 source + 10 pts	≥ 2 sources + 10 pts
<b>Very High</b>	—	—	—	1 source + 10 pts

**Chart 8. Vulnerability analysis for Dead Dog Saloon and B & S – Volatile Organic Chemicals**

