

Hydrogeologic Susceptibility and Vulnerability Assessment for Wasilla Bumpus Softball Field, Wasilla, Alaska

DRINKING WATER PROTECTION PROGRAM REPORT *146*

September 2001

Hydrogeologic Susceptibility and Vulnerability Assessment for Wasilla Bumpus Softball Field, Wasilla, Alaska

By URS

DRINKING WATER PROTECTION PROGRAM REPORT 146

ALASKA DEPARTMENT OF ENVIRONMENTAL CONSERVATION: 2001

TABLE OF CONTENTS

	Page
EXECUTIVE SUMMARY	1
INTRODUCTION	1
DESCRIPTION OF THE WASILLA-AREA, ALASKA	1
WASILLA BUMPUS SOFTBALL FIELD PUBLIC WATER SOURCE.....	3
ASSESSMENT AND PROTECTION AREA FOR THE DRINKING WATER SOURCE.....	3
INVENTORY OF POTENTIAL AND EXISTING CONTAMINANT SOURCES	4
RANKING OF CONTAMINANT RISKS	4
VULNERABILITY OF WASILLA BUMPUS SOFTBALL FIELD DRINKING WATER SOURCES	4
SUMMARY.....	6
REFERENCES CITED.....	7

TABLES

Table 1.	Natural Susceptibility - Susceptibility of the Wellhead and Aquifer to Contamination.....	5
Table 2.	Contaminant Risks	5
Table 3.	Overall Vulnerability of Wasilla Bumpus Softball Field Public Drinking Water Source to Contamination	5

ILLUSTRATIONS

Figure 1.	Index map showing the location of Wasilla, Alaska	1
-----------	---	---

APPENDICES

Appendix A.	Wasilla Bumpus Softball Field Drinking Water Protection Area (Appendix A Map 1)
Appendix B.	Wasilla Bumpus Softball Field Drinking Water Protection Area showing potential and Existing sources of contamination (Appendix B Map 1)
Appendix C.	Contaminant Source Inventory for Wasilla Bumpus Softball Field (Table 1) Contaminant Source Inventory and Risk Ranking for Wasilla Bumpus Softball Field – Bacteria and Viruses (Table 2) Contaminant Source Inventory and Risk Ranking for Wasilla Bumpus Softball Field – Nitrates/Nitrites (Table 3) Contaminant Source Inventory and Risk Ranking for Wasilla Bumpus Softball Field – Volatile organic chemicals (Table 4)
Appendix D.	Vulnerability Analysis for Contaminant Source Inventory and Risk Ranking for Wasilla Bumpus Softball Field Public Drinking Water Source (Chart 1 – Chart 8 and Table 1 – Table 3)

Hydrogeologic Susceptibility and Vulnerability Assessment for Wasilla Bumpus Softball Field Public Drinking Water Source, Wasilla, Alaska

By URS

Drinking Water Protection Program Alaska Department of Environmental Conservation

EXECUTIVE SUMMARY

Wasilla Bumpus Softball Field is a Class B (transient/noncommunity) drinking water source consisting of one well. Identified potential and current sources of contaminants for the Wasilla Bumpus Softball Field include: residential septic systems; Class V septic injection wells; Class V motor vehicle injection well, a truck stop and approximately 147 acres of residential area. These identified potential and existing sources of contamination are considered sources of bacteria and viruses, nitrates and/or nitrites, and volatile organic chemicals. Overall, the Wasilla Bumpus Softball Field public water source received vulnerability rating of **Medium** for bacteria and viruses, **High** for nitrates and/or nitrites, and **High** for volatile organic chemicals.

INTRODUCTION

The purpose of this environmental assessment is to provide public water system owners and/or operators, communities, and local governments with information they can use to preserve the quality of Alaska's public drinking water supplies. This assessment was completed for Wasilla Bumpus Softball Field source of public drinking water. This source consists of one well in the Wasilla area (see Figure 1). This assessment, known under the Alaska Drinking Water Protection Program as the *Source Water Assessment*, has combined a review of the natural hydrogeologic sensitivity with potential and existing contaminant risks to arrive at an overall vulnerability of the drinking water source to contamination. This assessment has been completed as a basis for local voluntary protection efforts and to assist agencies in their efforts to reduce risk to this public drinking water supply.

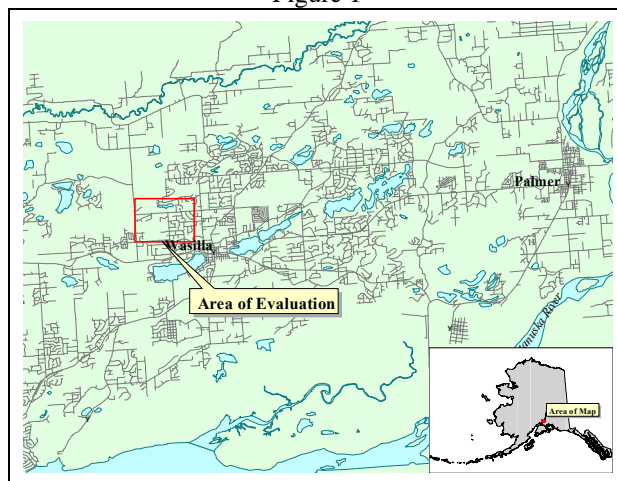
DESCRIPTION OF THE WASILLA AREA, ALASKA

Location

Wasilla is located near the center of the Matanuska-Susitna (Mat-Su) Borough in south central Alaska. The Mat-Su Borough encompasses approximately 23,000

square miles, including the majority of the drainage of the Susitna and Matanuska Rivers. Wasilla is located south of the Talkeetna Mountains, about 12 miles north of Knik Arm on Cook Inlet (*Wickersham Alaska Corporation, 1986*), (*Matanuska-Susitna Borough/Fran Seager, 1991*). Wasilla is 30 air miles north/northeast of Anchorage, adjacent to the Alaska Railroad main line and the George Parks Highway (*ADNR, 1981*).

Figure 1



Glacial forces during the end of the last ice age shaped the Wasilla area. Several glacial advances and retreats left a complex system of hills, ridges, lakes, and lowlands that define the topography of today. Landforms in and around Wasilla consist of undulating ridges of glacial till and flat benches of sand and gravel out wash (*Matanuska-Susitna Borough, 1985*).

Climate

The climate in Wasilla is transitional between the extremes of Interior Alaska and the wet conditions found along the coastal areas.

Wasilla is less than 15 miles from Knik Arm and about 75 miles from Prince William Sound. Summer temperatures are more moderate than those in the Interior due to the proximity to the coast. The Chugach and Talkeetna Mountains and the Alaska Range also protect Wasilla from the frigid cold of the Interior winter and act

to break up strong storm fronts (*Brabets, 1997*), (*Western Regional Climate Center, 2000*).

Wasilla averages about 18 inches of precipitation per year, including about 59 inches of snowfall. Winter thaws can decrease snow cover to a few inches.

Mean monthly high temperatures in Wasilla range from about 22 degrees in December and January to 69 degrees in July. The frost-free period in spring and summer averages 115 days, with the first frost usually arriving by September 1st.

The record low for Wasilla was - 50 degrees in January 1947. The highest recorded temperature was 90 degrees in 1969 (*Wickersham Alaska Corporation, 1986*).

Topography and Drainage

The Wasilla area topography varies from about 300 feet to 500 feet above sea level. The surrounding terrain gradually rises from south to north. The Wasilla area has hundreds of small lakes, several large lakes, and two substantial streams. At 387 acres, *Wasilla Lake* is one of the largest lakes in south central Alaska (*Renshaw Consulting Engineers, 1983*).

The Cottonwood Creek drainage system, of which Wasilla Lake is part, begins northeast of Wasilla and discharges into Knik Arm about 15 miles to the south.

Cottonwood Creek is a popular salmon fishing stream (outside city limits), and has an average rate of flow of about 16 cubic feet per second near the outfall from Wasilla Lake.

At 362 acres, *Lake Lucille* is slightly smaller than Wasilla Lake. However, although within close proximity, they are part of two separate drainages and have significantly different characteristics. Lake Lucille is shallow with an average depth of five and a half feet. Its primary water source is springs in the lakebed. No significant creek leads into it and Lucille Creek is a low flow stream that drains it into Big Lake. Water circulation and flushing action through the lake are slow.

Although the quality can vary significantly in a short distance, groundwater supplies are abundant in the area. The Wasilla area has a central water system, and several subdivisions have private water systems. Many homes and businesses in the area, however, rely on individual wells for their water supply. Most of these wells are shallow with depths of less than 100 feet. Static water levels in many of these wells are around 30 feet below the surface. The coarse gravel underlying the Wasilla

area provides a large aquifer even in the winter when infiltration is low (*Trainer, 1953*).

Geology and Soils

A lake covered the Susitna River valley lowland during glacial times. The deposition of glacial silts and clays played an important part in the make up of the soils of the area.

Most of the soils in the area provide good sources of sand, gravel and topsoil. The deposition of silt, clay and organic muck in old lakes and depressions means that some areas have soil conditions that vary over relatively short distances. The U.S. Soil Conservation Service has mapped seven soil associations in and around Wasilla.

The Homestead and Knik soil types predominate the Wasilla area, with smaller areas of Coal Creek, Jacobsen, Salamatof, and Slikok soil types.

The *Homestead* series is common in the Wasilla area especially north of the Parks Highway from the west end of Lake Lucille. Homestead soils are shallow, well-drained silty soils over loose sand and gravel. They have formed on broad out-wash plains and gravel moraines and run from nearly flat terrain to steep areas.

Homestead series is prevalent along Church Road north of the Parks Highway and throughout the Mission Hills subdivision.

The *Knik* series is the other major soil type in the area. It includes most of the downtown area, north and south of Lake Lucille and Wasilla Lake.

Knik soils are shallow, well-drained and silty, overlaying coarse, gravelly material, although scattered areas of poorly drained soils are also included. The soils are extensive over a broad range of slopes from flat to steep escarpments.

The *Coal Creek* series consists of dark-colored, poorly drained soils that formed in moderately deep silty material over compacted, fine-textured sediments. These soils occur in nearly level to gently sloping stream valleys, on the border of muskegs and in small depressions. They are sometimes characterized by hillside seeps. This soil unit is found in small areas north and west of the downtown area.

The *Jacobsen* series is a very poorly drained, very stony silt loam found in broad depressions. The type is found west of Lake Lucille, south of the railroad, about even with Church Road.

The *Salamatof* and *Slikok* series are found within low areas and consist of poorly drained, peat, muck, and silty sediments in shallow depressions throughout the eastern side of the city. High water tables, often at or just below the surface, are characteristics of these soils. The banks of Cottonwood Creek south of Wasilla Lake have the greatest concentrations of these soils.

Finally, the *Wasilla* series consists of somewhat poorly drained soils with layers of sand and compacted finer material. They do not have the high organic content of the *Slikok* series. These soils are not extensive in the local area and are most commonly found southeast of Lake Lucille along the Knik-Goose Bay Road (*Wickersham Alaska Corporation, 1986*).

WASILLA BUMPUS SOFTBALL FIELD PUBLIC WATER SOURCE

Wasilla Bumpus Softball Field public water source is a Class B (transient/noncommunity) water source, which is operated by the City of Wasilla. The source consists of one well located on the southern portion of the Wasilla Bumpus Softball Field property and is at an elevation of approximately 425 feet above sea level. The well is located approximately 500 feet north of Melanie Avenue and 3500 feet west of Lucas Road (see Map 1 in Appendix A). According to the well log, Wasilla Bumpus Softball Field well penetrates gravel and clay from 0 to 8 feet; gravel from 8 to 17 feet; sand and gravel from 17 to 21 feet; gravel and brown silt from 21 to 27 feet; gravel and blue silt from 27 to 65 feet; gravel and brown sand from 65 to 77 feet; gravel and blue silt from 77 to 80 feet; gravel and brown sand from 80 to 85 feet; gravel and wet sand from 85 to 95 feet; sand and gravel from 95 to 103 feet; brown sand from 103 to 110 feet; gravel from 110 to 115 feet; silt and gravel from 115 to 125 feet; clay and gravel from 125 to 140 feet; clay, gravel and water from 140 to 145 feet; and water bearing gravel and clay from 145 to a total depth of 150 feet below land surface. The well is open ended in the unconfined aquifer and had a static water level of 69 feet below land surface at the time of drilling (07/02/86). The well has been capped but has not been grouted, and is not located in a floodplain. This water system operates during the summer only and serves an unknown number of non-residents through a single connection to the property.

ASSESSMENT AND PROTECTION AREA FOR WASILLA BUMPUS SOFTBALL FIELD DRINKING WATER SOURCE

The Drinking Water Protection and Assessment Area that has been established for Wasilla Bumpus Softball Field is the area that is most sensitive to contamination. This

area has served as a basis for assessing the risk of the drinking water source to contamination. This zone around the drinking water source is the most critical area for the preservation of the quality of the drinking water for this source. For simplicity, this area will be known as your Drinking Water Protection Area and will serve as the area of focus for voluntary protection efforts.

Conceptually, groundwater enters the unconfined aquifer by seepage for localized surface water sources and precipitation. The groundwater generally flows within the unconfined aquifer toward Cook Inlet.

An analytical calculation was used to calculate the size and shape of the area that contributes water to the well. The input parameters describing the attributes of the aquifer in this calculation were adopted from the U.S. Geological Survey (*Patrick, Brabets, and Glass 1989*), and State of Alaska Department of Water Resources (*Jokela et. al. 1991*). This analytical calculation was used as a guide as the first step in establishing the protection area for Wasilla Bumpus Softball Field. Additional methods were further employed to take into account any uncertainties in groundwater flow and aquifer characteristics to arrive at a meaningful and conservative protection area with respect to public health (Refer to the Guidance Manual for Class B Public Water Systems for additional information).

The Drinking Water Protection Areas established for wells by the Alaska Department of Environmental Conservation are separated into zones. These zones correspond to a time-of-travel. Time-of-travel is the time required for water to move in the saturated zone of the ground from a specific point to the well. The Drinking Water Protection Areas for the Wasilla Bumpus Softball Field contain four zones: Zone A, Zone B, Zone C, and Zone D (see Map 1 in Appendix B).

Zone A corresponds to the area between the well and the distance equal to $\frac{1}{4}$ of the distance of the two-year time-of-travel. Depending on where a contaminant source is located within Zone A, travel time for a contaminant to the well may be on the order of several days to several hours.

The Zone B protection area for the Wasilla Bumpus Softball Field corresponds to a time-of-travel of less than two years and extends northeast 1000 feet southwest of the southern end of Kerry Lane.

The Zone C protection area extends from Zone B northeast to 500 feet southwest of the corner of Spruce Avenue and Lucas Road and corresponds to a time-of-travel of less than five years.

The Zone D protection area, which corresponds to a time-of-travel less than ten years, extends from Zone C to the northeast.

INVENTORY OF POTENTIAL AND EXISTING CONTAMINANT SOURCES

The Drinking Water Protection Program has completed an inventory of potential and existing sources of contamination within the Wasilla Bumpus Softball Field Drinking Water Protection Area. This survey was completed through a search of agency records and other publicly available information.

Potential sources of contamination to drinking water supplies cover a wide range of categories and types. Potential drinking water contaminants are found within agricultural, residential, commercial, and industrial areas, but can also occur within areas that have little or no development.

For the basis of this assessment and all Class B public water system assessments, three categories of drinking water contaminants were inventoried. They include:

- Bacteria and viruses;
- Nitrates and/or nitrites; and,
- Volatile organic chemicals.

Inventoried potential sources of contamination within Zone A through Zone D were associated with residential and light industrial type activities (see Table 1 in Appendix C). Below is a summary of the contaminant sources inventoried within the Wasilla Bumpus Softball Field protection area:

- Class V injection wells (septic system);
- Class V injection well (motor vehicle);
- Truck Stop;
- Highways and roads;
- Residential septic systems; and,
- Approximately 147 acres of residential area.

These potential contaminant sources present risk for all three categories of drinking water contaminants for the Wasilla Bumpus Softball Field drinking water source.

RANKING OF CONTAMINANT RISKS

Potential and existing sources of contamination have been identified, sorted, and ranked according to what type and level of risk they represent. Ranking of contaminant risks for a “potential” or “existing” source of contamination is a function of toxicity and volumes of

specific contaminants associated with that source. Further, contaminant risks are a function of the number and density of those types of contaminant sources as well as the proximity of those sources to the well.

VULNERABILITY OF WASILLA BUMPUS SOFTBALL FIELD DRINKING WATER SOURCES

Vulnerability of a drinking water source to contamination is a combination of two factors:

- Natural susceptibility; and,
- Contaminant risks.

Each of the three categories of drinking water contaminants has been analyzed and an overall vulnerability score of 0 to 100 is ultimately assigned:

Natural Susceptibility (0 – 50 points)

+

Contaminant Risks (0 – 50 points)

=

Vulnerability of the
Drinking Water Source to Contamination (0 – 100).

A score for the Natural Susceptibility is achieved by analyzing the properties of the well and the aquifer.

Susceptibility of the Wellhead (0 – 25 Points)

+

Susceptibility of the Aquifer (0 – 25 Points)

=

Natural Susceptibility (Susceptibility of the Well)
(0 – 50 Points)

The well for Wasilla Bumpus Softball Field is completed in an unconfined aquifer setting. Since this aquifer is recharge by surface water and precipitation that migrates downward from the surface, contaminants that are present at the surface have a potential for adversely impact this aquifer. Combining the susceptibility of the wellhead and the aquifer to contamination leads to a score (0 – 50 points) and rating of Overall Susceptibility (see Appendix D). Table 1 shows the Overall Susceptibility score and rating for Wasilla Bumpus Softball Field.

Table 1. Natural Susceptibility - Susceptibility of the Wellhead and Aquifer to Contamination

	Score	Rating
Susceptibility of the Wellhead	10	Medium
Susceptibility of the Aquifer	21	Very High
Natural Susceptibility	31	High

Contaminant risks to a drinking water source depend on the type, number or density, and distribution of contaminant sources. Class V injection wells for a large capacity septic system, and a class V injection well for disposal of motor vehicle waste contribute the highest risk for potential contamination to the Wasilla Bumpus Softball Field source of public drinking water.

A score (0 – 50 points) and rating of Contaminant Risks (see Appendix D) is assigned based on the findings of the Contaminant Source Inventory (Appendix C - Table 1 – Table 4). This portion of the analysis examines any existing or historical contamination that has been detected at the drinking water source through routine sampling. It also reviews contamination that has or may have occurred but has not arrived or been detected at the well. Table 2 summarizes the Contaminant Risks for each category of drinking water contaminants.

Table 2. Contaminant Risks

Contaminant Risks	Score	Rating
Bacteria and Viruses	15	Low
Nitrates and/or Nitrites	45	Very High
Volatile Organic Chemicals	32	High

Appendix D contains eight charts, which together form the ‘Vulnerability Analysis’ for a source water assessment for a public drinking water source. Chart 1 analyzes the ‘Susceptibility of the Wellhead’ to contamination by looking at the construction of the well and its surrounding area. Chart 2 analyzes the ‘Susceptibility of the Aquifer’ to contamination by looking at the naturally occurring attributes of the water source and influences on the groundwater system that might lead to contamination. Chart 3 analyzes ‘Contaminant Risks’ for the drinking water source with respect to bacteria and viruses. The ‘Contaminant Risks’ portion of the analysis considers potential sources of contaminants as well as a review of contamination that has or may have occurred, but has not arrived or been detected at the well. Lastly, Chart 4 contains the ‘Vulnerability Analysis for Bacteria and Viruses’. Charts 5 through 8 contain the Contaminant Risks and Vulnerability Analyses for nitrates and nitrites and volatile organic chemicals, respectively.

Vulnerability of the drinking water source to contamination is the combination of susceptibility of the aquifer and the well with contaminant risks. Table 3 contains the overall vulnerability scores (0 – 10) and ratings for each of the three categories of drinking water contaminants (see Appendix D). Note: scores are rounded off to the nearest five.

Table 3. Overall Vulnerability of Wasilla Bumpus Softball Field Public Drinking Water Source to Contamination by Category

Category	Score	Rating
Bacteria and Viruses	45	Medium
Nitrates and Nitrites	75	High
Volatile Organic Chemicals	65	High

Tables 2 through 4 in Appendix C contain the ranking of potential and existing sources of contamination with respect to bacteria and viruses, nitrates and/or nitrites, and volatile organic chemicals.

The residential septic systems in Zone A are the driving factors in determining contaminant risks for bacteria and viruses; the Class V septic injection wells in Zone C are the driving factors in determining contaminant risks for nitrates and nitrites; and the Class V injection well for disposal of motor vehicle and the truck stop in Zone C is the driving factor in determining contaminant risks for volatile organic chemicals (see “Overall Rank after Analysis” in Table 2 – 4 of Appendix C).

Overall, contaminant risks for bacteria and viruses are low with the residential septic systems driving the score. Combining this potential bacteria and viruses risk with the susceptibility of the well yields an overall vulnerability to contamination of medium for this source of public drinking water.

Overall, contaminant risks for nitrates and/or nitrites are very high with Class V septic injection wells driving the score. Combining this potential nitrates and/or nitrites risk with the susceptibility of the well yields an overall vulnerability to contamination of high for this source of public drinking water.

Overall, contaminant risks for volatile organic chemicals are high with a Class V injection well for the disposal of motor vehicle waste driving the score. Combining these potential volatile organic chemical contamination risks with the susceptibility of the well yields an overall vulnerability to contamination of high for this source of public drinking water.

SUMMARY

A *Source Water Assessment* has been completed for the Wasilla Bumpus Softball Field source of public drinking water. The overall vulnerability of this source to contamination is **Medium** for bacteria and viruses, **High** for nitrates and/or nitrites, and **High** for volatile organic chemicals. This assessment of contaminant risks can be used as a foundation for local voluntary protection efforts as well as a basis for the continuous efforts on the part of the Anchorage Water & Wastewater Utility to protect public health. It is anticipated that *Source Water Assessments* will be updated every five years to reflect any changes in the vulnerability and/or susceptibility of the public drinking water source.

REFERENCES CITED

- Alaska Department of Natural Resources, 1981, Scenic Resources along the Parks Highway, Anchorage, AK
- Alaska Department of Transportation and Public Facilities, 1990, Parks Highway Reconnaissance Report, Anchorage, AK.
- Alaska Department of Transportation and Public Facilities, 1992, Wasilla-Fishhook Road Environmental Assessment, Anchorage, AK.
- Brabets, T., 1997, Precipitation map of Alaska, Web extension to the U.S. Geological Survey Water Resources for Alaska GIS datasets. <URL:<http://agdc.usgs.gov/data/usgs/water>> .
- Dearborn, L.L., and Alleley, R.D., 1983, Water-well data for the Big Lake area, Anchorage C8-SW Quadrangle, Alaska; Division of Geological and Geophysical Surveys Report of Investigations 83-19, State of Alaska Department of Natural Resources, Fairbanks, AK.
- Jakola, J.B., Munter, J.A., and Evans, J.G., 1991, Ground-water resources of the Palmer-Big Lake area, Alaska: a conceptual model. Division of Geological and Geophysical Surveys Report of Investigations 90-4, State of Alaska Department of Natural Resources, Fairbanks, AK.
- LaSage, D.M., 1992, Ground-water resources of the Palmer area, Alaska, Division of geological and Geophysical Surveys Report of Investigations 92-3, State of Alaska Department of Natural Resources, Fairbanks, AK.
- Matanuska-Susitna Borough/Fran Seager, 1991, Major Coal Towns of the Matanuska Valley: A Pictorial History, Palmer, AK.
- Matanuska-Susitna Borough, 1985, Knik-Matanuska-Sisitna: A Visual History of the Valleys, Wasilla, AK.
- Maynard, D.L., 1987, Water-well data from the Houston area, Matanuska-Susitna Borough, Alaska, Division of Geological and Geophysical Surveys Report of Investigations 87-17, 14p., State of Alaska Department of Natural Resources, Fairbanks, AK.
- Patrick, L.D., Brabets, T.P., and Glass, R.L., 1989, Simulation of ground-water flow at Anchorage, Alaska: US Geological Survey Water-Resources Investigations Report 88-4139, 41p.
- Renshaw Consulting Engineers, 1983, Summary of Mineral Resources, Palmer, AK.
- Trainer, F.W., 1953, Preliminary report on the geology and groundwater resources of the Matanuska Valley agricultural area, Alaska, USGS Water Supply Paper 1494, U.S. Printing Office, Washington, D.C.
- Western Regional Climate Center, 2000, August 24, Web extension to the *Western Regional Climate Center* [WWW document]. URL http://www.uaa.alaska.edu/enri/ascc_web/ascc_home.html .
- Wickersham Alaska Corporation, 1986, Wasilla Comprehensive Plan, Anchorage, AK.
- Winkler, G.R., 1992, Geologic map and summary geochronology of the Anchorage 1° x 3° quadrangle, Southern Alaska, US Geological Survey MAP I-2283, U.S. Government Printing Office, Washington D.C.

APPENDIX A

Drinking Water Protection Area

Drinking Water Protection Area for the Public Water System Well at Wasilla Bumpus Softball Fields



Legend

- Public Water System Well
- Roads
- Lakes

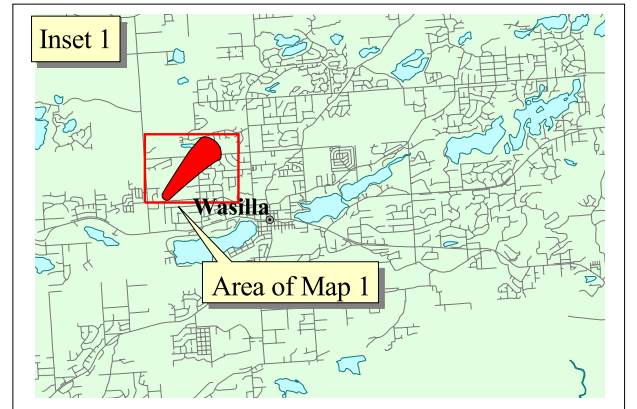
Protection Areas

- Zone A**
 Several Months Travel Time
- Zone B**
 Less Than 2 Years Travel Time
- Zone C**
 Less Than 5 Years Travel Time
- Zone D**
 Less Than 10 Years Travel Time

Data Sources:
Base Map Data, Contaminant Sources, Public Water System Wells
Alaska Department of Environmental Conservation (ADEC)

Drinking Water Protection Areas based on ADEC
Calculation Spreadsheet.

URS Corporation does not guarantee the accuracy or validity of the data provided.



APPENDIX B

Drinking Water Protection Area Showing Sources of Contamination

Drinking Water Protection Area for the Public Water System Well at Wasilla Bumpus Softball Fields Showing Potential and Existing Sources of Contamination



Legend

- Public Water System Well
- Roads
- Lakes

Protection Areas

- Zone A**
 Several Months Travel Time
- Zone B**
 Less Than 2 Years Travel Time
- Zone C**
 Less Than 5 Years Travel Time
- Zone D**
 Less Than 10 Years Travel Time

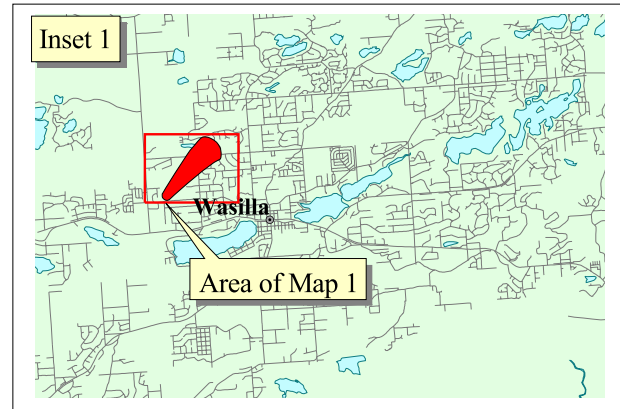
Contaminant Sources

- Hardware stores (C17)
- Truck stops/terminals (C42)
- Motor / motor vehicle repair shops (C31)
- Pharmacies (with on-site wastewater disposal) (C35)
- Furniture manufacturing, repair, and finishing shops (C14)
- Taxidermists (C41)
- Injection wells (Class V) Septic System (Drainfield) (D10)
- Injection wells (Class V) Vehicle Waste Disposal (D42)
- Septic systems (R2)
- Sewer Lines (D1)
- Highways and Roads (X20)
- Residential Areas (R1)

Data Sources:
Base Map Data, Contaminant Sources, Public Water System Wells
Alaska Department of Environmental Conservation (ADEC)

Drinking Water Protection Areas based on ADEC
Calculation Spreadsheet.

URS Corporation does not guarantee the accuracy or validity of the data provided.



APPENDIX C

Contaminant Source Inventory Tables

Table 1

**Contaminant Source Inventory for the
Class 'B' Well System at
Wasilla Bumpus Softball Fields**

PWSID 225074

Contaminant Source Category	Contaminant Source ID	CS ID Tag	Zone	Location	Map	Comments
Residential Areas	R1	R1-01	A		1	Total Acreage 15
Septic systems (serves one single-family home)	R2	R2-01	A	MELANIE AVE	1	
Septic systems (serves one single-family home)	R2	R2-02	A	MELANIE AVE	1	
Septic systems (serves one single-family home)	R2	R2-03	A	MELANIE AVE	1	
Residential Areas	R1	R1-02	B		1	Total Acreage 50
Truck stops/terminals	C42	C42-01	C	LUCUS RD	1	
Injection wells (Class V) Large-Capacity Septic System (Drainfield Disposal Method)	D10	D10-01	C	LUCUS RD	1	
Injection wells (Class V) Large-Capacity Septic System (Drainfield Disposal Method)	D10	D10-02	C	LUCUS RD	1	
Injection wells (Class V) Large-Capacity Septic System (Drainfield Disposal Method)	D10	D10-03	C	LUCUS RD	1	
Injection wells (Class V) Large-Capacity Septic System (Drainfield Disposal Method)	D10	D10-4	C	GLENNKERRY DR	1	
Injection wells (Class V) Motor Vehicle Waste Disposal Well	D42	D42-01	C	LUCUS RD	1	
Residential Areas	R1	R1-03	C		1	Total Acreage 82
Septic systems (serves one single-family home)	R2	R2-04	C	GLENNKERRY DR	1	
Septic systems (serves one single-family home)	R2	R2-05	C	LUCUS RD	1	
Highways and roads, paved (cement or asphalt)	X20	X20-01	C	N KERRY LN	1	
Highways and roads, paved (cement or asphalt)	X20	X20-02	C	W GLENNKERRY DR	1	
Highways and roads, paved (cement or asphalt)	X20	X20-03	C	N LUCUS RD	1	
Furniture manufacturing, repair, and finishing shops	C14	C14-01	D	SPRUCE AVE	1	
Injection wells (Class V) Large-Capacity Septic System (Drainfield Disposal Method)	D10	D10-06	D	WILDER AVE	1	
Injection wells (Class V) Large-Capacity Septic System (Drainfield Disposal Method)	D10	D10-07	D	BUCKEYE LN	1	

Table 2

**Potential and Existing Sources of Contamination for
Wasilla Bumpus Softball Fields
(Bacteria and Viruses)**

PWSID 225074

Contaminant Source Category	Contaminant Source ID	CS ID Tag	Zone	Risk Ranking for Analysis	Overall Rank after Analysis	Location	Map	Comments
Residential Areas	R1	R1-01	A	Low	1		1	
Septic systems (serves one single-family home)	R2	R2-01	A	Low	2	MELANIE AVE	1	
Septic systems (serves one single-family home)	R2	R2-02	A	Low	3	MELANIE AVE	1	
Septic systems (serves one single-family home)	R2	R2-03	A	Low	4	MELANIE AVE	1	
Residential Areas	R1	R1-02	B	Low	5		1	
Injection wells (Class V) Large-Capacity Septic System (Drainfield Disposal Method)	D10	D10-01	C	High		LUCUS RD	1	
Injection wells (Class V) Large-Capacity Septic System (Drainfield Disposal Method)	D10	D10-02	C	High		LUCUS RD	1	
Injection wells (Class V) Large-Capacity Septic System (Drainfield Disposal Method)	D10	D10-03	C	High		LUCUS RD	1	
Injection wells (Class V) Large-Capacity Septic System (Drainfield Disposal Method)	D10	D10-4	C	High		GLENNKERRY DR	1	
Injection wells (Class V) Motor Vehicle Waste Disposal Well	D42	D42-01	C	Low		LUCUS RD	1	
Residential Areas	R1	R1-03	C	Low			1	
Septic systems (serves one single-family home)	R2	R2-04	C	Very Low		GLENNKERRY DR	1	
Septic systems (serves one single-family home)	R2	R2-05	C	Very Low		LUCUS RD	1	
Highways and roads, paved (cement or asphalt)	X20	X20-01	C	Very Low		N KERRY LN	1	
Highways and roads, paved (cement or asphalt)	X20	X20-02	C	Very Low		W GLENNKERRY DR	1	
Highways and roads, paved (cement or asphalt)	X20	X20-03	C	Very Low		N LUCUS RD	1	
Injection wells (Class V) Large-Capacity Septic System (Drainfield Disposal Method)	D10	D10-06	D	High		WILDER AVE	1	
Injection wells (Class V) Large-Capacity Septic System (Drainfield Disposal Method)	D10	D10-07	D	High		BUCKEYE LN	1	

Table 3

**Potential and Existing Sources of Contamination for
Wasilla Bumpus Softball Fields
(Nitrates and Nitrites)**

PWSID 225074

Contaminant Source Category	Contaminant Source ID	CS ID Tag	Zone	Risk Ranking for Analysis	Overall Rank after Analysis	Location	Map	Comments
Residential Areas	R1	R1-01	A	Low	5		1	
Septic systems (serves one single-family home)	R2	R2-01	A	Low	6	MELANIE AVE	1	
Septic systems (serves one single-family home)	R2	R2-02	A	Low	7	MELANIE AVE	1	
Septic systems (serves one single-family home)	R2	R2-03	A	Low	8	MELANIE AVE	1	
Residential Areas	R1	R1-02	B	Low	9		1	
Injection wells (Class V) Large-Capacity Septic System (Drainfield Disposal Method)	D10	D10-01	C	High	4	LUCUS RD	1	
Injection wells (Class V) Large-Capacity Septic System (Drainfield Disposal Method)	D10	D10-02	C	High	3	LUCUS RD	1	
Injection wells (Class V) Large-Capacity Septic System (Drainfield Disposal Method)	D10	D10-03	C	High	2	LUCUS RD	1	
Injection wells (Class V) Large-Capacity Septic System (Drainfield Disposal Method)	D10	D10-4	C	High	1	GLENNKERRY DR	1	
Residential Areas	R1	R1-03	C	Low	10		1	
Septic systems (serves one single-family home)	R2	R2-04	C	Very Low		GLENNKERRY DR	1	
Septic systems (serves one single-family home)	R2	R2-05	C	Very Low		LUCUS RD	1	
Highways and roads, paved (cement or asphalt)	X20	X20-01	C	Very Low		N KERRY LN	1	
Highways and roads, paved (cement or asphalt)	X20	X20-02	C	Very Low		W GLENNKERRY DR	1	
Highways and roads, paved (cement or asphalt)	X20	X20-03	C	Very Low		N LUCUS RD	1	
Injection wells (Class V) Large-Capacity Septic System (Drainfield Disposal Method)	D10	D10-06	D	High		WILDER AVE	1	
Injection wells (Class V) Large-Capacity Septic System (Drainfield Disposal Method)	D10	D10-07	D	High		BUCKEYE LN	1	

Table 4

**Potential and Existing Sources of Contamination for
Wasilla Bumpus Softball Fields
(Volatile Organic Chemicals - VOCs)**

PWSID 225074

Contaminant Source Category	Contaminant Source ID	CS ID Tag	Zone	Risk Ranking for Analysis	Overall Rank after Analysis	Location	Map	Comments
Residential Areas	R1	R1-01	A	Low	3		1	
Septic systems (serves one single-family home)	R2	R2-01	A	Low	4	MELANIE AVE	1	
Septic systems (serves one single-family home)	R2	R2-02	A	Low	5	MELANIE AVE	1	
Septic systems (serves one single-family home)	R2	R2-03	A	Low	6	MELANIE AVE	1	
Residential Areas	R1	R1-02	B	Low	7		1	
Truck stops/terminals	C42	C42-01	C	Medium	2	LUCUS RD	1	
Injection wells (Class V) Large-Capacity Septic System (Drainfield Disposal Method)	D10	D10-01	C	Low	8	LUCUS RD	1	
Injection wells (Class V) Large-Capacity Septic System (Drainfield Disposal Method)	D10	D10-02	C	Low	9	LUCUS RD	1	
Injection wells (Class V) Large-Capacity Septic System (Drainfield Disposal Method)	D10	D10-03	C	Low	10	LUCUS RD	1	
Injection wells (Class V) Large-Capacity Septic System (Drainfield Disposal Method)	D10	D10-4	C	Low		GLENNKERRY DR	1	
Injection wells (Class V) Motor Vehicle Waste Disposal Well	D42	D42-01	C	High	1	LUCUS RD	1	
Residential Areas	R1	R1-03	C	Low			1	
Septic systems (serves one single-family home)	R2	R2-04	C	Very Low		GLENNKERRY DR	1	
Septic systems (serves one single-family home)	R2	R2-05	C	Very Low		LUCUS RD	1	
Highways and roads, paved (cement or asphalt)	X20	X20-01	C	Very Low		N KERRY LN	1	
Highways and roads, paved (cement or asphalt)	X20	X20-02	C	Very Low		W GLENNKERRY DR	1	
Highways and roads, paved (cement or asphalt)	X20	X20-03	C	Very Low		N LUCUS RD	1	
Furniture manufacturing, repair, and finishing shops	C14	C14-01	D	High		SPRUCE AVE	1	
Injection wells (Class V) Large-Capacity Septic System (Drainfield Disposal Method)	D10	D10-06	D	Low		WILDER AVE	1	
Injection wells (Class V) Large-Capacity Septic System (Drainfield Disposal Method)	D10	D10-07	D	Low		BUCKEYE LN	1	

APPENDIX D

Vulnerability Analysis Charts and Tables

Chart 1. Susceptibility of the wellhead – Wasilla Bumpus Softball Field

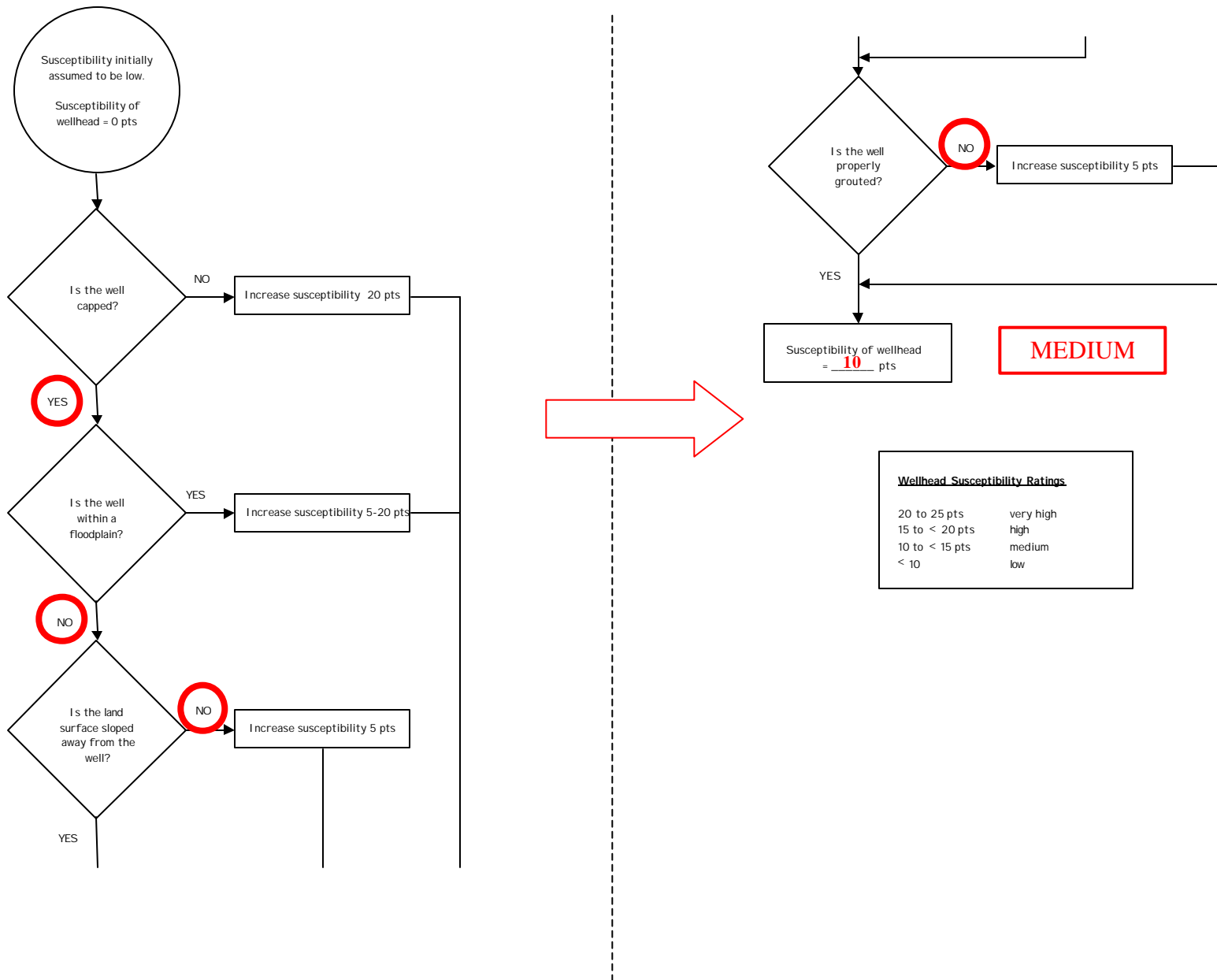
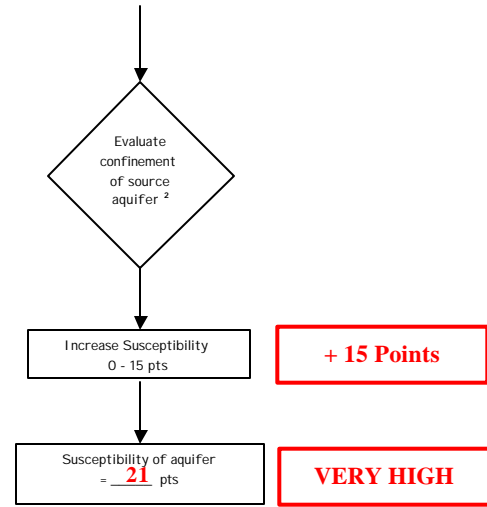
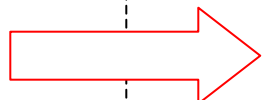
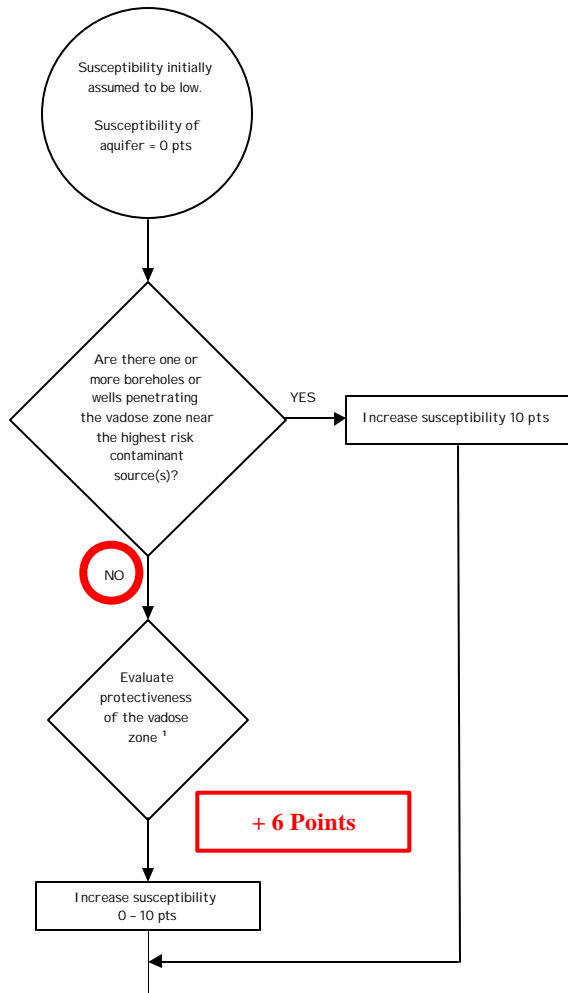


Chart 2. Susceptibility of the aquifer-Wasilla Bumpus Softball Field



1. Protectiveness of the Vadose Zone

- net recharge (function of precipitation, slope of land surface, & permeability of soils) [0 - 10 pts; 50% weight]
- depth to water table (unconfined aquifer) or top of confining layer (confined aquifer) [interpolate linearly: 100' - 20', 0 - 5 pts; 20' - 0', 5 - 10 pts; 50% weight]

Recharge (18" per year, Gravel, and Flat Interior Slope) 8/10 Pts = 4 Points
 Depth to water = 69 ft 4/10 Pts = 2 Points
 Protectiveness of the Vadose Zone Total = 6 Points

2. Degree of Confinement

- confined versus unconfined aquifer [confined: $K \leq 10^{-6}$ cm/s, minimum thickness of at least one layer = 20 ft, interpolate linearly 100' - 20', 0 - 10 pts; unconfined = 15 pts; 65% weight]
- density of boreholes and wells penetrating the confining layer (confined aquifer) or the water table (unconfined aquifer) [confined: 0 - 15 pts; unconfined = 15 pts; 35% weight]

Confinement - unconfined 15/15 Pts = 15 Points
 Density of boreholes/wells 15/15 Pts = 5 Points
 Degree of Confinement Total = 15 Points

Aquifer Susceptibility Ratings

20 to 25 pts	very high
15 to < 20 pts	high
10 to < 15 pts	medium
< 10	low

VERY HIGH

Chart 3. Contaminant risks for Wasilla Bumpus Softball Field – Bacteria & Viruses

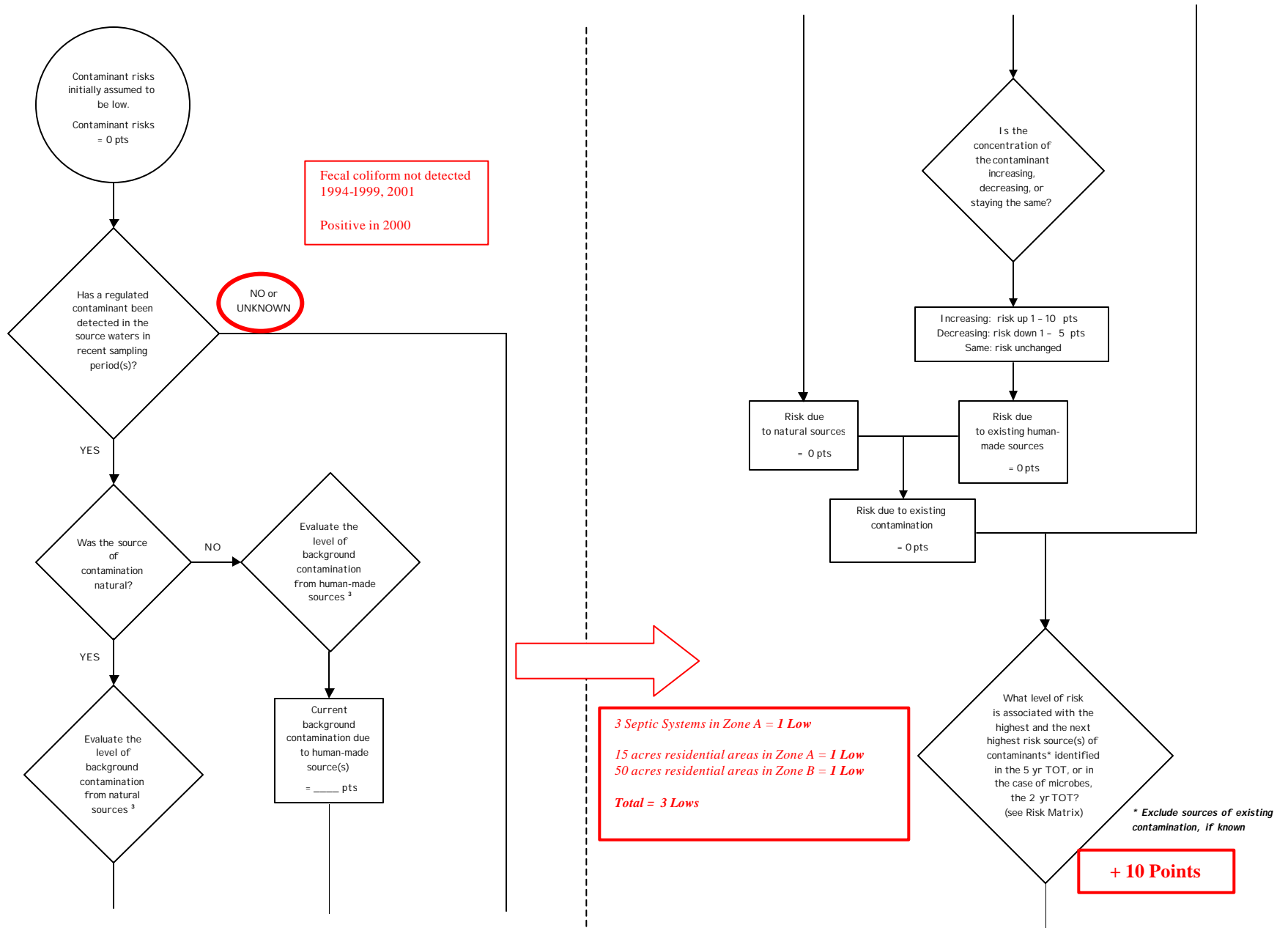


Chart 3. Contaminant risks for Wasilla Bumpus Softball Field – Bacteria & Viruses (Continued)

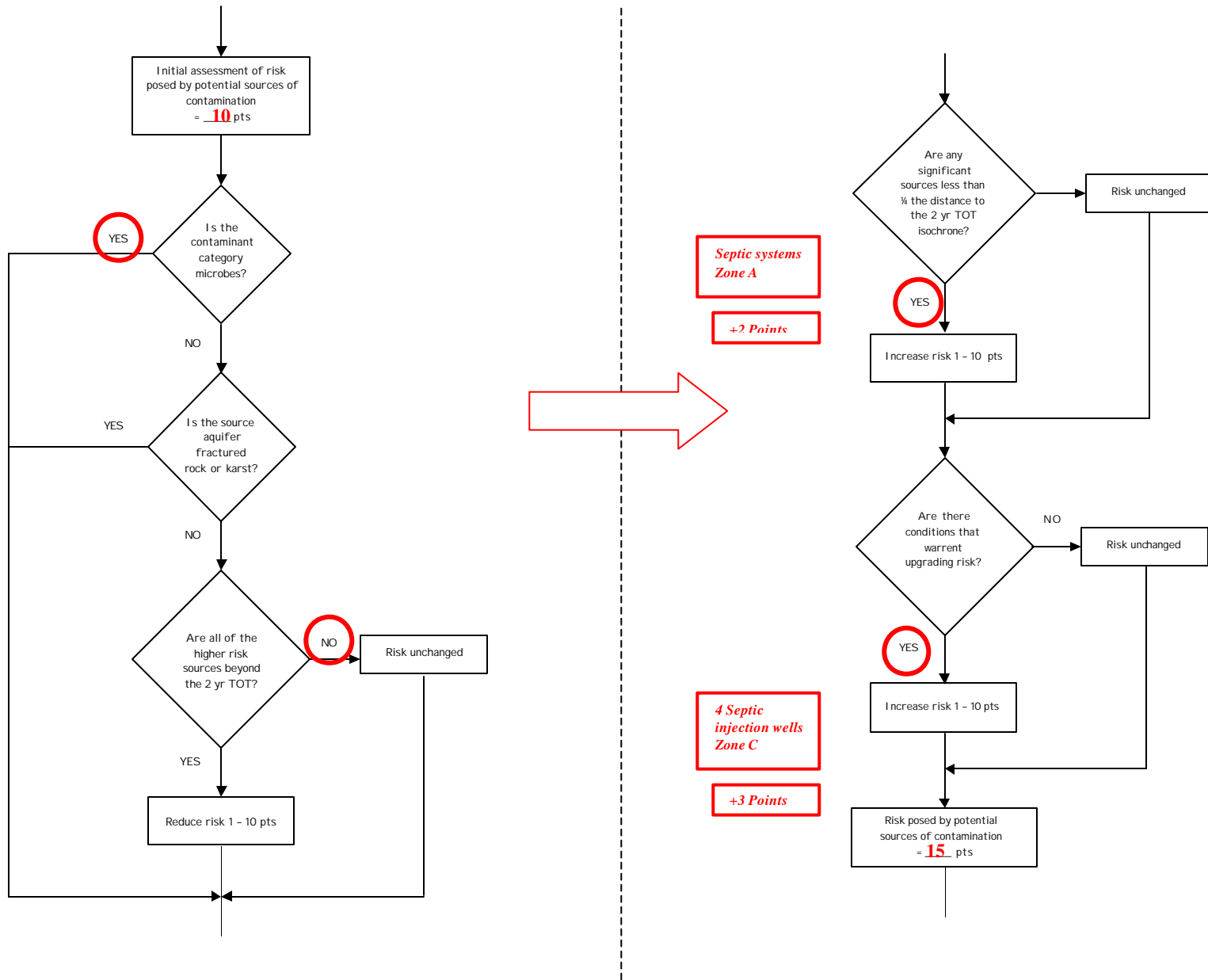


Chart 3. Contaminant risks for Wasilla Bumpus Softball Field – Bacteria & Viruses (Continued)

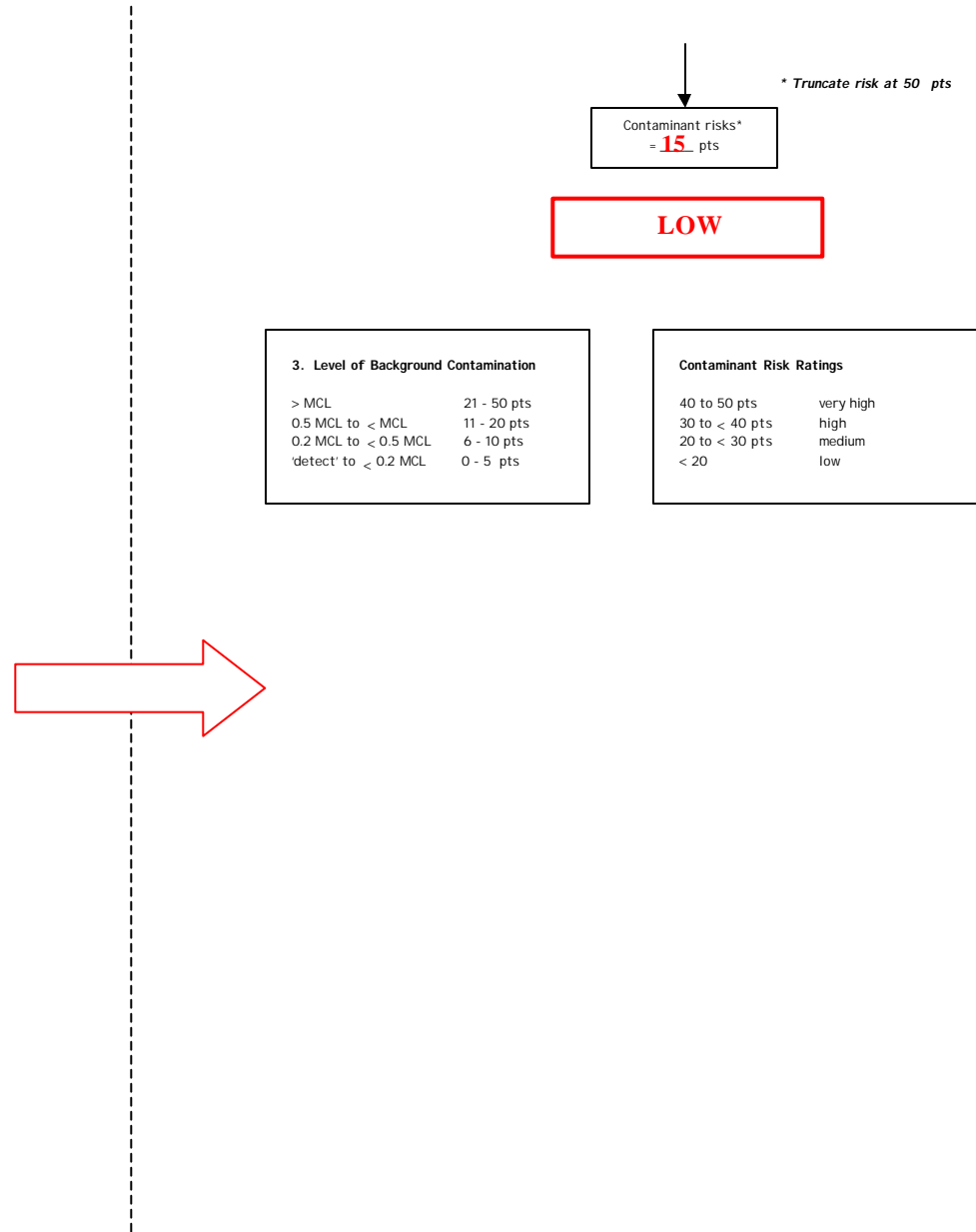
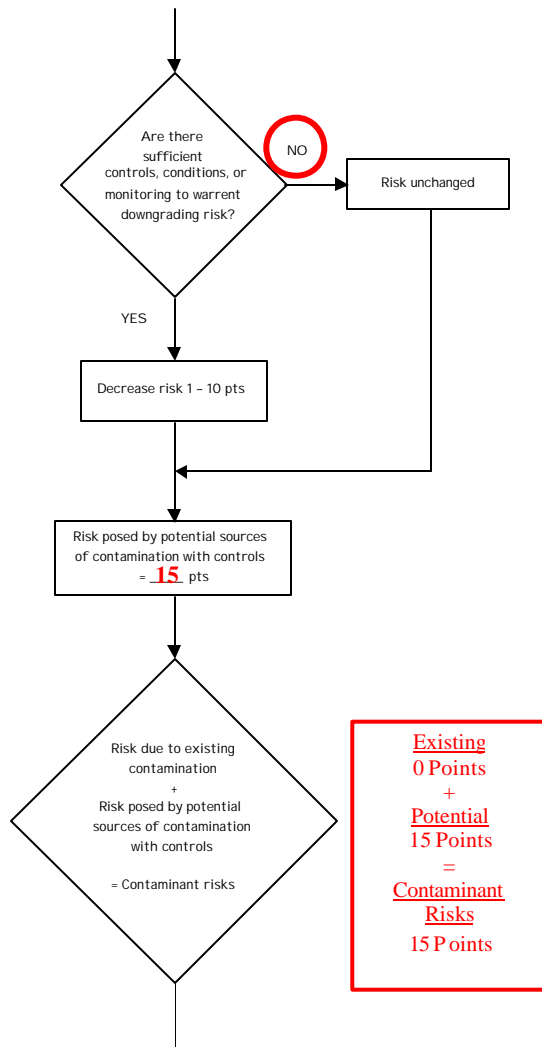


Table 1. Risk Matrix for Contaminant Sources for Wasilla Bumpus Softball Field – Bacteria & Viruses

Level of Risk Associated with the Highest Risk Sources

Next Highest Risk Sources(s)	<i>Septic systems and 65 acres of residential area</i>	LOW 10 pts	MEDIUM 20 pts	HIGH 30 pts	VERY HIGH 40 pts
	Low	≥ 10 sources + 10 pts	≥ 10 sources + 5 pts	≥ 20 sources + 5 pts	---
	Medium	---	≥ 2 sources + 5 pts	≥ 5 sources + 5 pts	≥ 10 sources + 5 pts
	High	---	---	1 source + 10 pts	≥ 2 sources + 10 pts
	Very High	---	---	---	1 source + 10 pts

Chart 4. Vulnerability analysis for Wasilla Bumpus Softball Field – Bacteria & Viruses

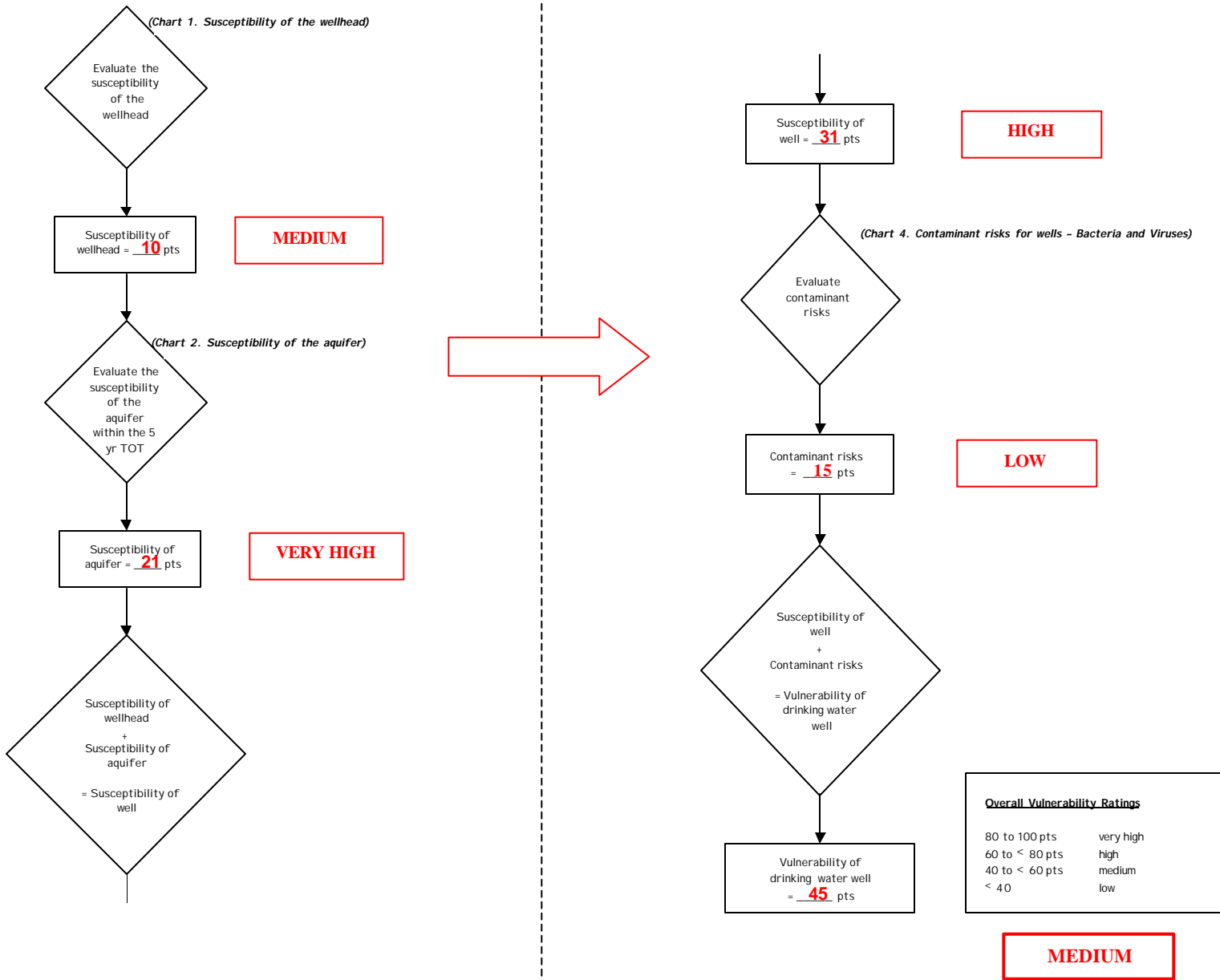


Chart 5. Contaminant risks for Wasilla Bumpus Softball Field – Nitrates and Nitrites

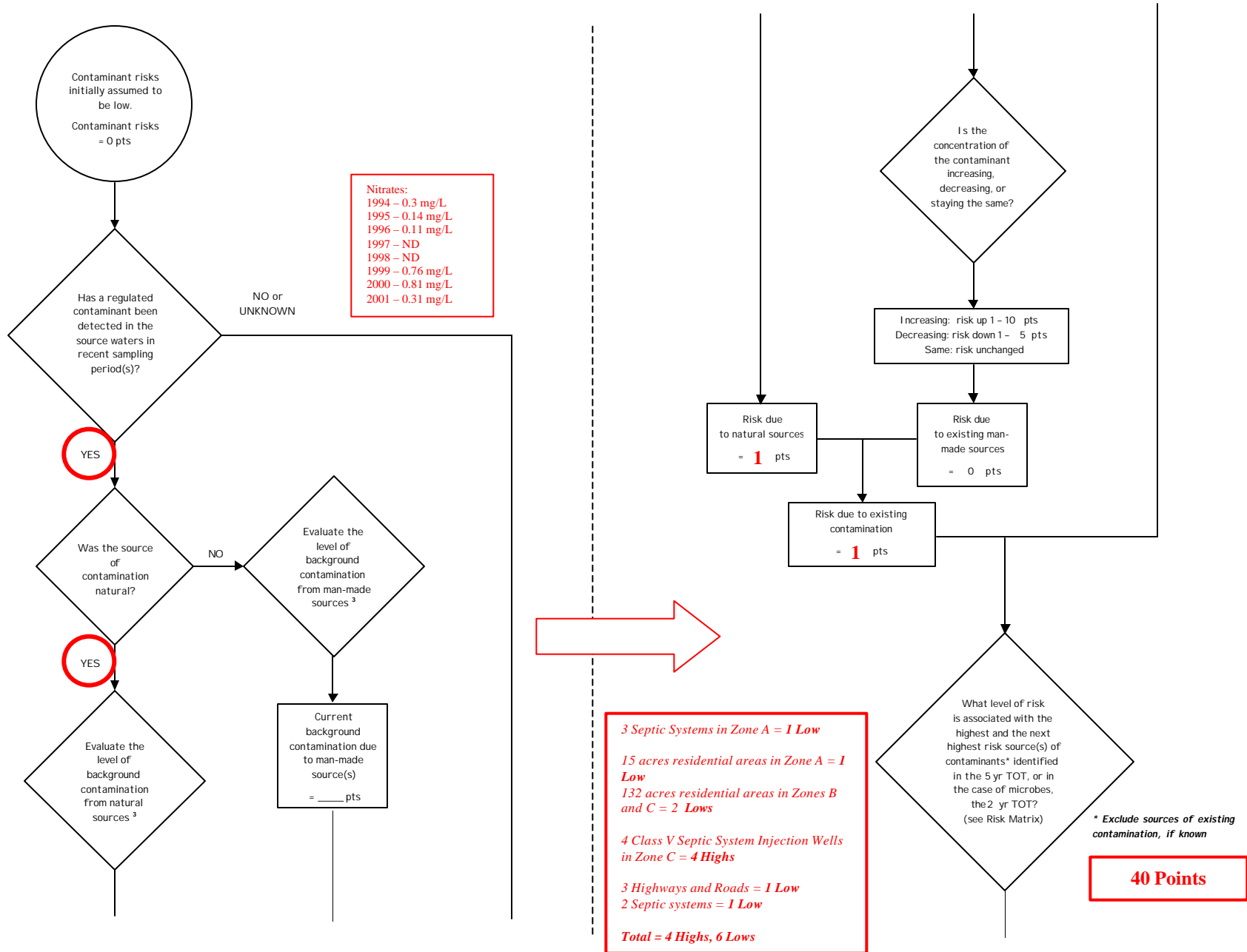


Chart 5. Contaminant risks for Wasilla Bumpus Softball Field – Nitrates and Nitrites (Continued)

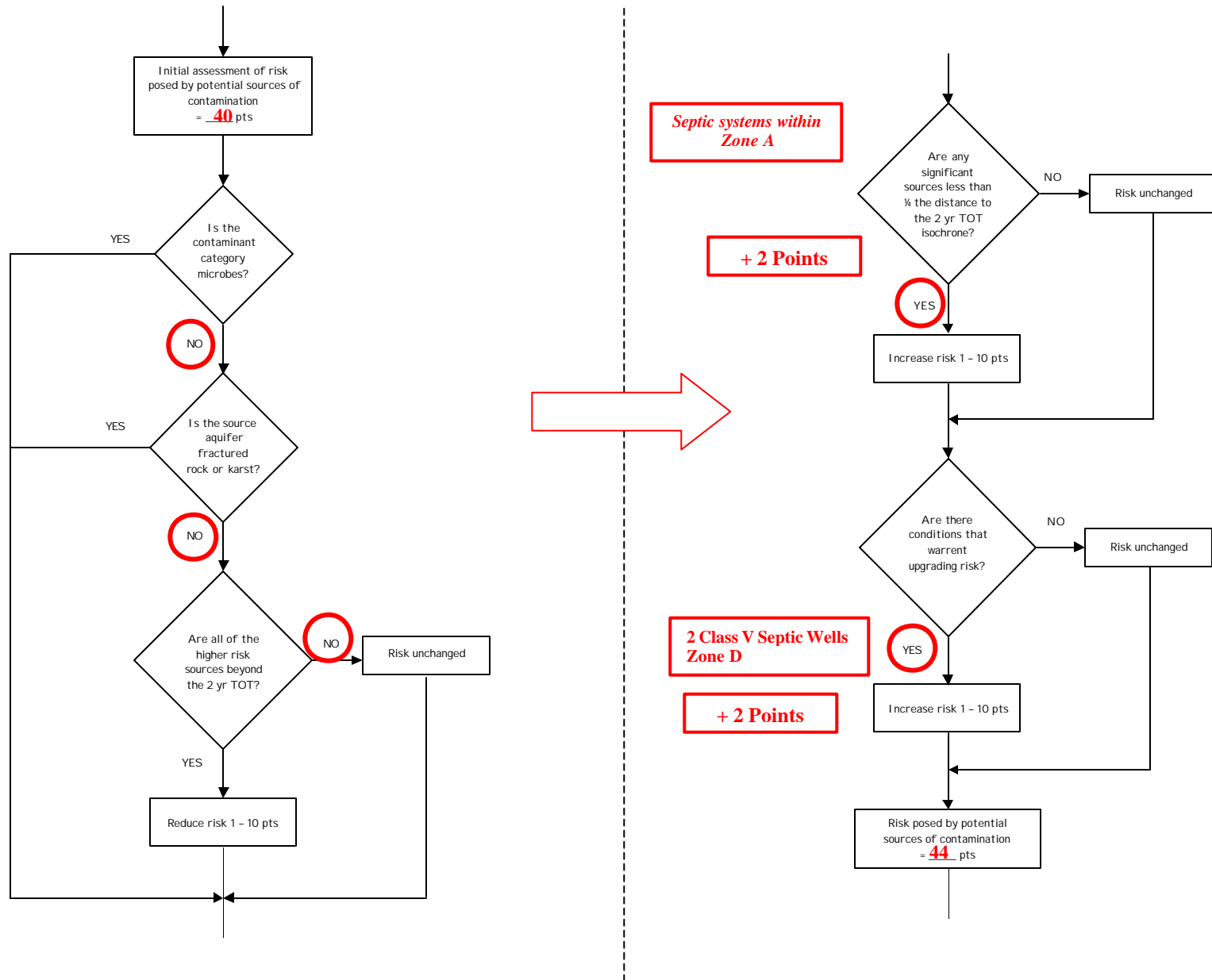


Chart 5. Contaminant risks for Wasilla Bumpus Softball Field – Nitrates and Nitrites (Continued)

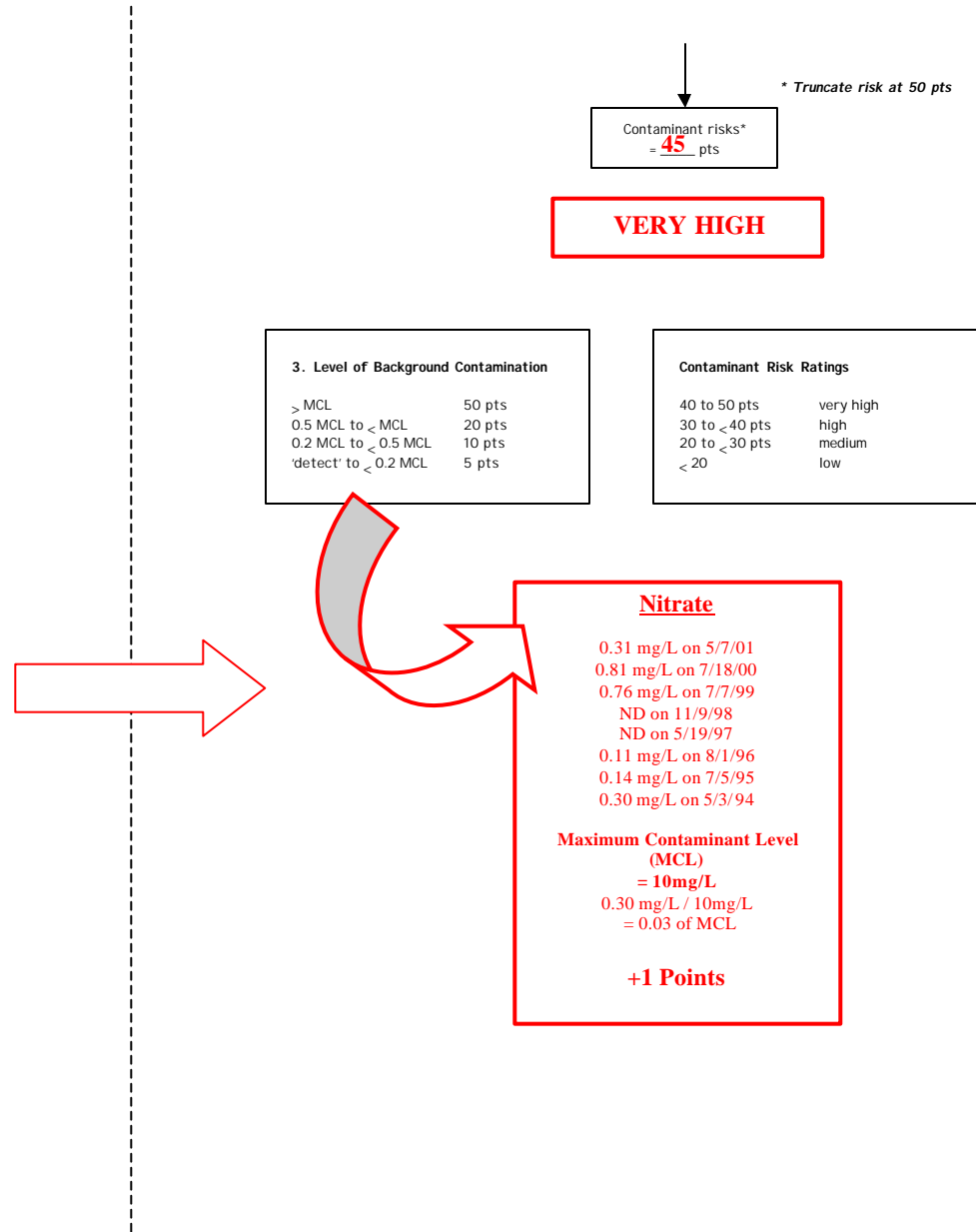
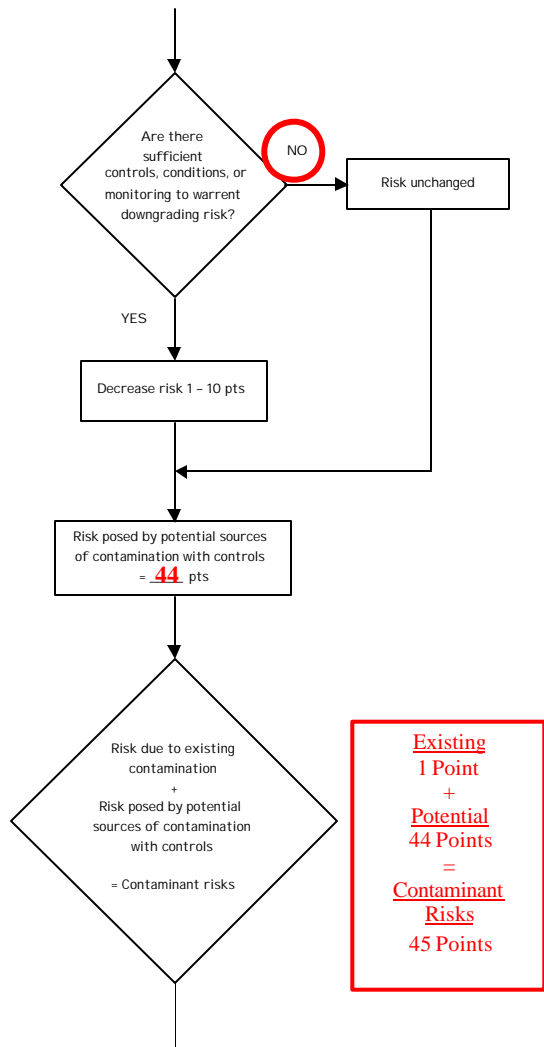


Table 2. Risk Matrix for Contaminant Sources for Wasilla Bumpus Softball Field – Nitrates and Nitrites

Level of Risk Associated with the Highest Risk Sources

Next Highest Risk Sources(s)	<i>4 Class V Septic Injection Wells and 147 acres of residential area in Zones A, B and C</i>	LOW 10 pts	MEDIUM 20 pts	HIGH 30 pts	VERY HIGH 40 pts
	Low	> 10 sources + 10 pts	> 10 sources + 5 pts	> 20 sources + 5 pts	---
	Medium	---	> 2 sources + 5 pts	> 5 sources + 5 pts	> 10 sources + 5 pts
	High	---	---	1 source + 10 pts	> 2 sources + 10 pts
	Very High	---	---	---	1 source + 10 pts

Chart 6. Vulnerability analysis for Wasilla Bumpus Softball Field – Nitrates and Nitrites

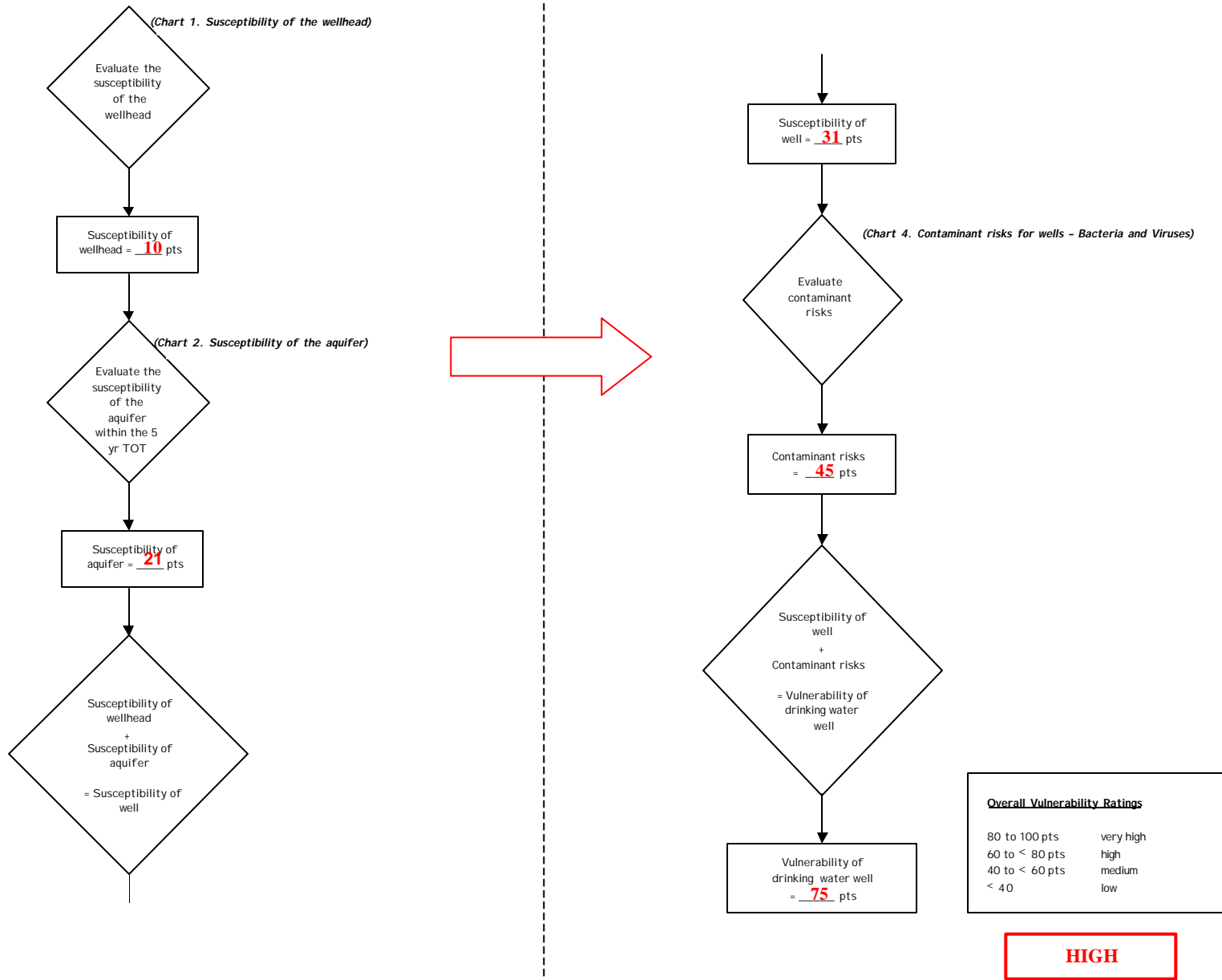


Chart 7. Contaminant risks for Wasilla Bumpus Softball Field– Volatile Organic Chemicals

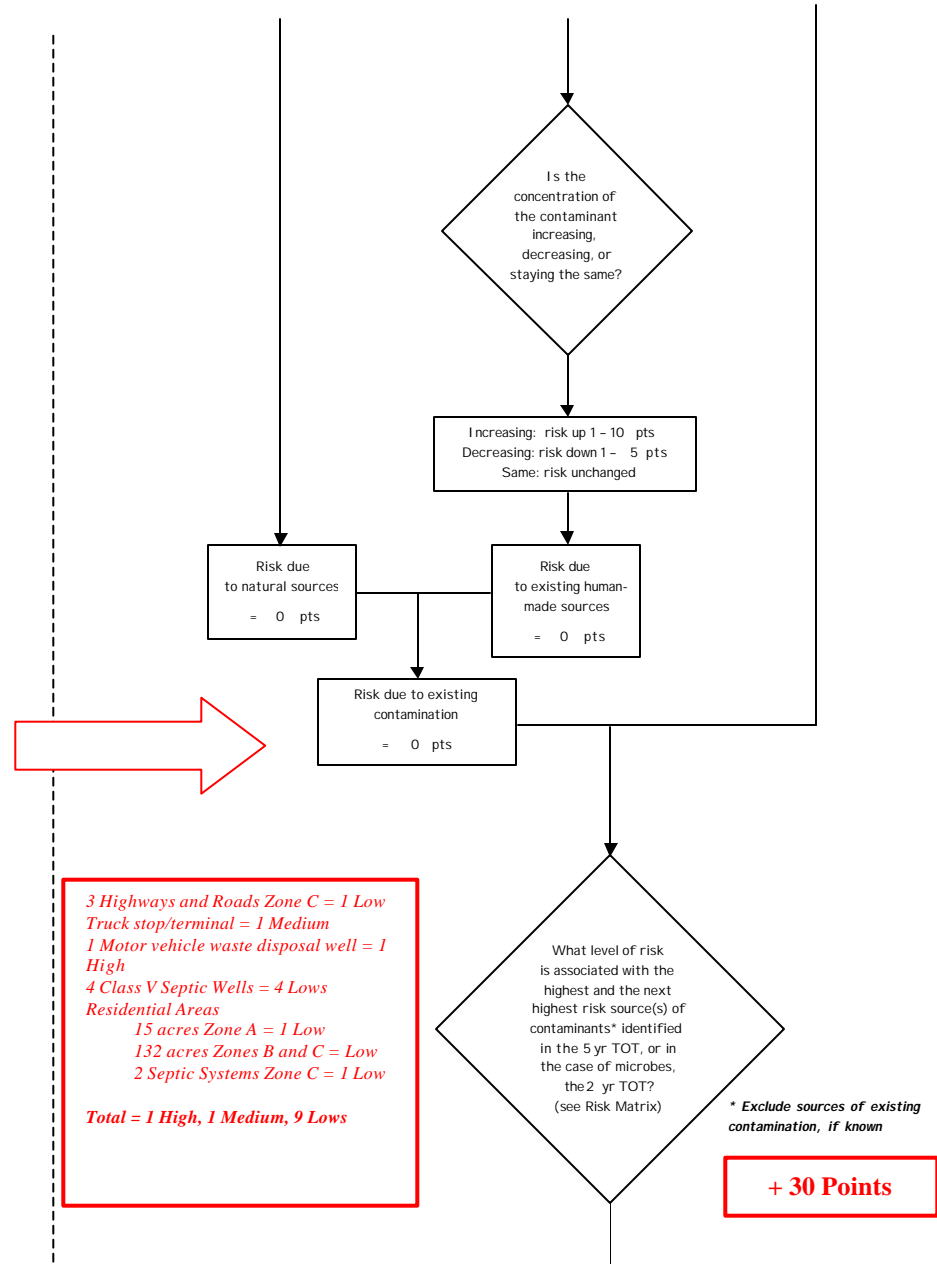
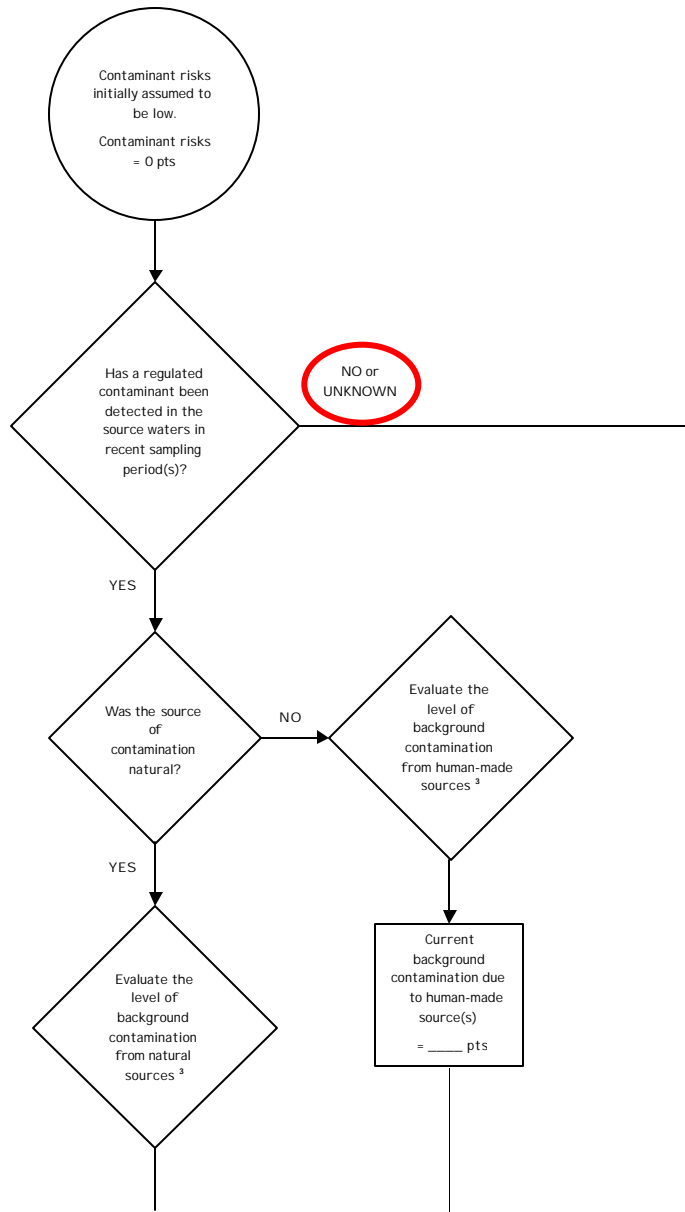


Chart 7. Contaminant risks for Wasilla Bumpus Softball Field – Volatile Organic Chemicals

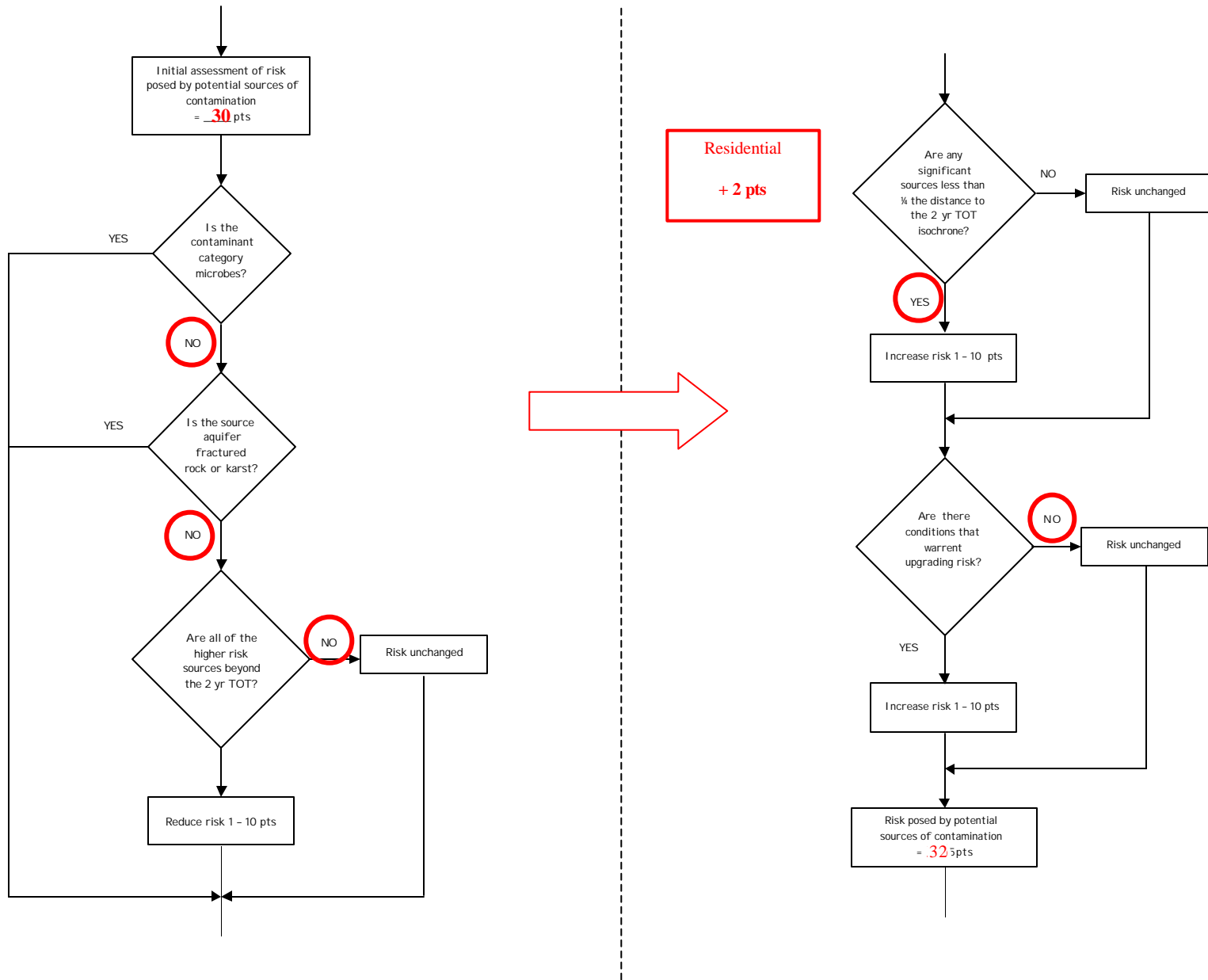


Chart 7. Contaminant risks for Wasilla Bumpus Softball Field – Volatile Organic Chemicals (Continued)

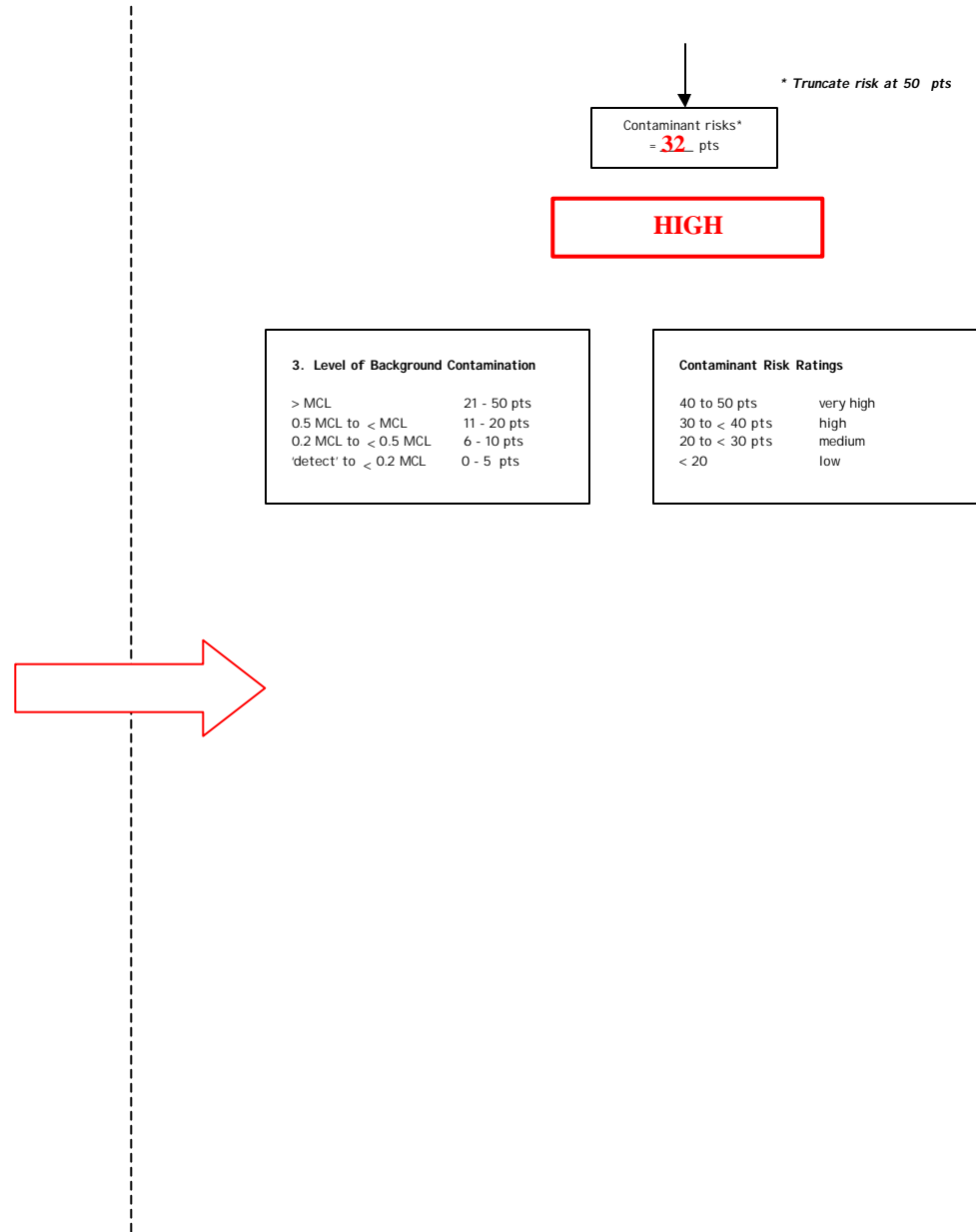
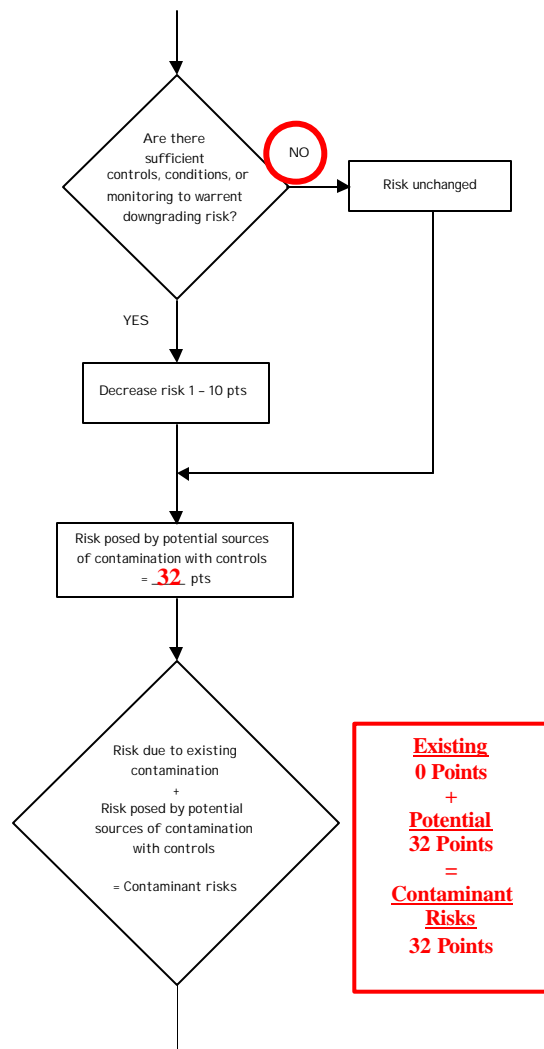


Table 3. Risk Matrix for Contaminant Sources for Wasilla Bumpus Softball Field – Volatile Organic Chemicals

Level of Risk Associated with the Highest Risk Sources

Next Highest Risk Sources(s)	See Chart 7	LOW 10 pts	MEDIUM 20 pts	HIGH 30 pts	VERY HIGH 40 pts
	Low	≥10 sources + 10 pts	≥10 sources + 5 pts	≥20 sources + 5 pts	---
	Medium	---	≥2 sources + 5 pts	≥5 sources + 5 pts	≥10 sources + 5 pts
	High	---	---	1 source + 10 pts	≥2 sources + 10 pts
	Very High	---	---	---	1 source + 10 pts

Chart 8. Vulnerability analysis for Wasilla Bumpus Softball Field – Volatile Organic Chemicals

