

Source Water Assessment

A Hydrogeologic Susceptibility and
Vulnerability Assessment for
Tiekel Campground,
Valdez, Alaska
PWSID #291978

DRINKING WATER PROTECTION PROGRAM REPORT NO. 876

Alaska Department of Environmental Conservation

Source Water Assessment for Tiegel Campground, Valdez, Alaska PWSID #291978

DRINKING WATER PROTECTION PROGRAM REPORT NO. 876

The Drinking Water Protection Program (DWPP) is producing Source Water Assessments in compliance with the Safe Drinking Water Act Amendments of 1996. Each assessment includes a delineation of the source water area, an inventory of potential and existing contaminant sources that may impact the water, a risk ranking for each of these contaminants, and an evaluation of the potential vulnerability of these drinking water sources.

These assessments are intended to provide public water systems owners/operators, communities, and local governments with the best available information that may be used to protect the quality of their drinking water. The assessments combine information obtained from various sources, including the U.S. Environmental Protection Agency, Alaska Department of Environmental Conservation (ADEC), public water system owners/operators, and other public information sources. The results of this assessment are subject to change if additional data becomes available. It is anticipated this assessment will be updated every five years to reflect any changes in the vulnerability and/or susceptibility of public drinking water source. If you have any additional information that may affect the results of this assessment, please contact the Program Coordinator of DWPP, (907) 269-7521.

CONTENTS

| SECTION | | Page |
|---------|--|------|
| | Executive Summary | 1 |
| | Tiekel Campground Public Drinking Water System | 1 |
| | Tiekel Campground Drinking Water Protection Area | 1 |
| | Inventory of Potential and Existing Contaminant Sources | 2 |
| | Ranking of Contaminant Risks | 2 |
| | Vulnerability of Tiekel Campground Drinking Water System | 2 |
| | References | 5 |

TABLES

| TABLE | | |
|-------|--------------------------|---|
| | 1. Definition of Zones | 2 |
| | 2. Susceptibility | 3 |
| | 3. Contaminant Risks | 3 |
| | 4. Overall Vulnerability | 3 |

APPENDICES

| APPENDIX | | |
|----------|--|--|
| | A. Tiekel Campground Drinking Water Protection Area (Map 1) | |
| | B. Contaminant Source Inventory for Tiekel Campground (Table 1) | |
| | Contaminant Source Inventory and Risk Ranking for Tiekel Campground – Bacteria and Viruses (Table 2) | |
| | Contaminant Source Inventory and Risk Ranking for Tiekel Campground – Nitrates/Nitrites (Table 3) | |
| | Contaminant Source Inventory and Risk Ranking for Tiekel Campground – Volatile Organic Chemicals (Table 4) | |
| | C. Tiekel Campground Drinking Water Protection Area and Potential and Existing Contaminant Sources (Map 2) | |
| | D. Vulnerability Analysis for Contaminant Source Inventory and Risk Ranking for Tiekel Campground Public Drinking Water Source (Charts 1 – 8) | |

Source Water Assessment for Tielcel Campground, Valdez, Alaska

Drinking Water Protection Program Alaska Department of Environmental Conservation

EXECUTIVE SUMMARY

The public water system for Tielcel Campground is a Class B (transient/non-community) water system consisting of one well. The Tielcel Campground is located at Mile 52 of the Richardson Highway, north of Valdez, Alaska. The wellhead received a susceptibility rating of **Low** and the aquifer received a susceptibility rating of **High**. Combining these two ratings produces a **Medium** rating for the natural susceptibility of the well. Identified potential and current sources of contaminants for Tielcel Campground public drinking water source include pit toilets; paved highways and roads; and campgrounds and RV parks. These identified potential and existing sources of contamination are considered sources of bacteria and viruses, nitrates and/or nitrites, and volatile organic chemicals. Overall, the public water sources for Tielcel Campground received a vulnerability rating of **Medium** for bacteria and viruses, and nitrates and nitrites; and **Low** for volatile organic chemicals.

TIEKEL CAMPGROUND PUBLIC DRINKING WATER SYSTEM

Tielcel Campground public water system is a Class B (transient/non-community) water system. The system consists of one well located at Mile 52 of the Richardson Highway, north of Valdez, Alaska (See Map 1 of Appendix A). Valdez is located on Port Valdez in Prince William Sound, and is the southern terminus of the Richardson Highway and the trans-Alaska pipeline. The population of Valdez is approximately 4,030.

Tielcel Campground averages about 110 inches of precipitation per year. The elevation for the Tielcel Campground is approximately 1,500 feet. The campground is located next to the Tielcel River and the aquifer is assumed to be the alluvial sands and gravel along the valley bottom.

According to a Sanitary Survey dated June 21, 1999, it is unknown when the existing well was installed or to what depth. For the purpose of this report, we are assuming the well depth is 40 feet below ground surface, and the length of the well screen is 10 feet. The Survey indicates that the land surface is sloped away from the well, providing adequate surface water drainage. We are assuming that the well was installed prior to 1992, and therefore is not grouted according to

ADEC standards. Proper grouting provides added protection against contaminants traveling along the well casing and into source waters.

This system operates seasonally from May to September and serves approximately 25 non-residents through one service connection.

TIEKEL CAMPGROUND DRINKING WATER PROTECTION AREA

In order to evaluate whether a drinking water source is at risk, we must first evaluate what are the most likely pathways for surface contamination to reach the groundwater. These areas are determined by looking at the characteristics of the soil, groundwater, aquifer, and well.

The most probable area for contamination to reach the drinking water well is the area that contributes water to the well, the groundwater recharge area. This area is designated as the Drinking Water Protection Area (DWPA). Because releases of contaminants within the DWPA are most likely to impact the drinking water well, this area will serve as the focus for voluntary protection efforts.

An analytical calculation was used to determine the size and shape of the DWPA. The input parameters describing the attributes of the aquifer in this calculation were estimated from information contained in the well logs and/or the Sanitary Survey. Additional methods were also used to take into account any uncertainties in groundwater flow and aquifer characteristics to arrive at a meaningful DWPA (Please refer to the Guidance Manual for Class B Public Water Systems for additional information).

The DWPAs established for wells by the ADEC are usually separated into four zones. These zones correspond to differences in the time-of-travel (TOT) of the water moving through the aquifer to the well.

The TOT for contaminants within the water varies and is dependent on the physical and chemical characteristics of each contaminant. The following is a summary of the four protection area zones for wells and the calculated time-of-travel for each:

Table 1. Definition of Zones

| Zone | Definition |
|-------------|---|
| A | ¼ the distance for the 2-yr. time-of-travel |
| B | Less than the 2 year time-of-travel |
| C | Less Than the 5 year time-of-travel |
| D | Less than the 10 year time-of-travel |

The DWPA for Tiekel Campground extends a couple of miles to the northwest of the well, and includes only Zones A. Because the upland groundwater system may include fractured bedrock, the TOT may be more rapid than predicted. For this reason, the zones related to TOT have been expanded at the upland base. Development in the vicinity of the well is limited to only Zone A (See Map 1 of Appendix A).

INVENTORY OF POTENTIAL AND EXISTING CONTAMINANT SOURCES

The Drinking Water Protection Program has completed an inventory of potential and existing sources of contamination within the Tiekel Campground DWPA. This inventory was completed through a search of agency records and other publicly-available information. Potential sources of contamination to the drinking water aquifer include a wide range of categories and types. Potential drinking water contaminants are found within agricultural, residential, commercial, and industrial areas, but can also occur within areas that have little or no development.

For the basis of all Class B public water system assessments, three categories of drinking water contaminants were inventoried. They include:

- Bacteria and viruses;
- Nitrates and/or nitrites;
- Volatile organic chemicals

The sources are displayed on Map 2 of Appendix C and summarized in Table 1 of Appendix B.

RANKING OF CONTAMINANT RISKS

Once the potential and existing sources of contamination have been identified, they are assigned a ranking according to what type and level of risk they represent. Ranking of contaminant risks for a “potential” or “existing” source of contamination is a function of toxicity and volumes of specific contaminants associated with that source. Rankings include:

- Low;
- Medium;
- High; and
- Very High.

The TOT for contaminants within the water varies and is dependent on the physical and chemical characteristics of each contaminant. Bacteria and Viruses are only inventoried in Zones A and B because of their short life span. Only “Very High” and “High” rankings are inventoried within the outer Zone D due to the probability of contaminant dilution by the time the contaminants get to the well.

Tables 2 through 4 in Appendix B contain the ranking of potential and existing sources of contamination with respect to bacteria and viruses, nitrates and/or nitrites, and volatile organic chemicals.

VULNERABILITY OF TIEKEL CAMPGROUND DRINKING WATER SYSTEM

Vulnerability of a drinking water source to contamination is a combination of two factors:

- Natural susceptibility; and
- Contaminant risks.

Appendix D contains eight charts, which together form the ‘Vulnerability Analysis’ for a source water assessment for a public drinking water source. Chart 1 analyzes the ‘Susceptibility of the Wellhead’ to contamination by looking at the construction of the well and its surrounding area. Chart 2 analyzes the ‘Susceptibility of the Aquifer’ to contamination by looking at the naturally occurring attributes of the water source and influences on the groundwater system that might lead to contamination. Chart 3 analyzes ‘Contaminant Risks’ for the drinking water source with respect to bacteria and viruses. The ‘Contaminant Risks’ portion of the analysis considers potential sources of contaminants as well as a review of contamination that has or may have occurred, but has not arrived or been detected at the well. Lastly, Chart 4 contains the ‘Vulnerability Analysis for Bacteria and Viruses’. Charts 5 through 8 contain the Contaminant Risks and Vulnerability Analyses for nitrates and nitrites and volatile organic chemicals, respectively.

A score for the Natural Susceptibility is reached by considering the properties of the well and the aquifer.

Susceptibility of the Wellhead (0 – 25 Points)
(Chart 1 of Appendix D)

+

Susceptibility of the Aquifer (0 – 25 Points)
Chart 2 of Appendix D)

=

Natural Susceptibility (Susceptibility of the Well)
(0 – 50 Points)

A ranking is assigned for the Natural Susceptibility according to the point score:

Natural Susceptibility Ratings

| | |
|----------------|-----------|
| 40 to 50 pts | Very High |
| 30 to < 40 pts | High |
| 20 to < 30 pts | Medium |
| < 20 pts | Low |

The well for Tiekel Campground is completed in an unconfined aquifer. Because unconfined aquifers are recharged by surface water and precipitation that migrates downward from the surface, contaminants at the surface have the potential to adversely impact this aquifer. Table 2 shows the Susceptibility scores and ratings for Tiekel Campground.

Table 2. Susceptibility

| | Score | Rating |
|--------------------------------|-------|--------|
| Susceptibility of the Wellhead | 5 | Low |
| Susceptibility of the Aquifer | 17 | High |
| Natural Susceptibility | 22 | Medium |

Contaminant risks to a drinking water source depend on the type, number or density, and distribution of contaminant sources. This score has been derived from an examination of existing and historical contamination that has been detected at the drinking water source

through routine sampling. It also evaluates potential sources of contamination. Flow charts are used to assign a point score, and ratings are assigned in the same way as for the natural susceptibility:

Contaminant Risk Ratings

| | |
|----------------|-----------|
| 40 to 50 pts | Very High |
| 30 to < 40 pts | High |
| 20 to < 30 pts | Medium |
| < 20 pts | Low |

Table 3 summarizes the Contaminant Risks for each category of drinking water contaminants.

Table 3. Contaminant Risks

| Category | Score | Rating |
|----------------------------|-------|--------|
| Bacteria and Viruses | 25 | Medium |
| Nitrates and/or Nitrites | 28 | Medium |
| Volatile Organic Chemicals | 12 | Low |

Finally, an overall vulnerability score is assigned for each water system by combining each of the contaminant risk scores with the natural susceptibility score:

Natural Susceptibility (0 – 50 points)

+

Contaminant Risks (0 – 50 points)

=

Vulnerability of the
Drinking Water Source to Contamination (0 – 100).

Again, rankings are assigned according to a point score:

Overall Vulnerability Ratings

| | |
|----------------|-----------|
| 80 to 100 pts | Very High |
| 60 to < 80 pts | High |
| 40 to < 60 pts | Medium |
| < 40 pts | Low |

Table 4 contains the overall vulnerability scores (0 - 100) and ratings for each of the three categories of drinking water contaminants. Note: scores are rounded off to the nearest five.

Table 4. Overall Vulnerability

| Category | Score | Rating |
|----------------------------|-------|--------|
| Bacteria and Viruses | 40 | Medium |
| Nitrates and Nitrites | 50 | Medium |
| Volatile Organic Chemicals | 35 | Low |

Bacteria and Viruses

The contaminant risk for bacteria and viruses is **Medium** with pit toilets; paved highways and roads; and campgrounds and RV parks representing the risks to the drinking water well (See Chart 3 – Contaminant Risks for Bacteria and Viruses in Appendix D).

Only a small amount of bacteria and viruses are required to endanger public health. Recent sampling events indicated no recent positive results were detected for bacteria and viruses. However, after combining the contaminant risks with the overall natural susceptibility of the well, the vulnerability of the well to contamination by bacteria and viruses is **Medium**.

Nitrates and Nitrites

The contaminant risk for nitrates and nitrites is **Medium** with pit toilets; paved highways and roads; and campgrounds and RV parks representing the risks to this source of public drinking water (See Chart 5 - Contaminant Risks for Nitrates and/or Nitrites in Appendix D).

Sampling history for Tielcel Campground indicates that nitrates have been detected in the water, but only in low concentrations (at 0.500 mg/L on 7/05/99) or 5% of the Maximum Contaminant Level (MCL). The MCL is the maximum level of contaminant that is allowed to exist in drinking water and still be consumed by humans without harmful health effects. Due to the high solubility and weak retention by soil, nitrates are very mobile, moving at approximately the same rate as water.

After combining the contaminant risk for nitrates and nitrites with the natural susceptibility of the well, the overall vulnerability of the well to contamination by nitrates and nitrites is **Medium**.

Volatile Organic Chemicals

The contaminant risk for volatile organic chemicals is **Low** with pit toilets; paved highways and roads; and campgrounds and RV parks representing the only known risks for volatile organic chemicals (See Chart 7 – Contaminant Risks for Volatile Organic Chemicals in Appendix D).

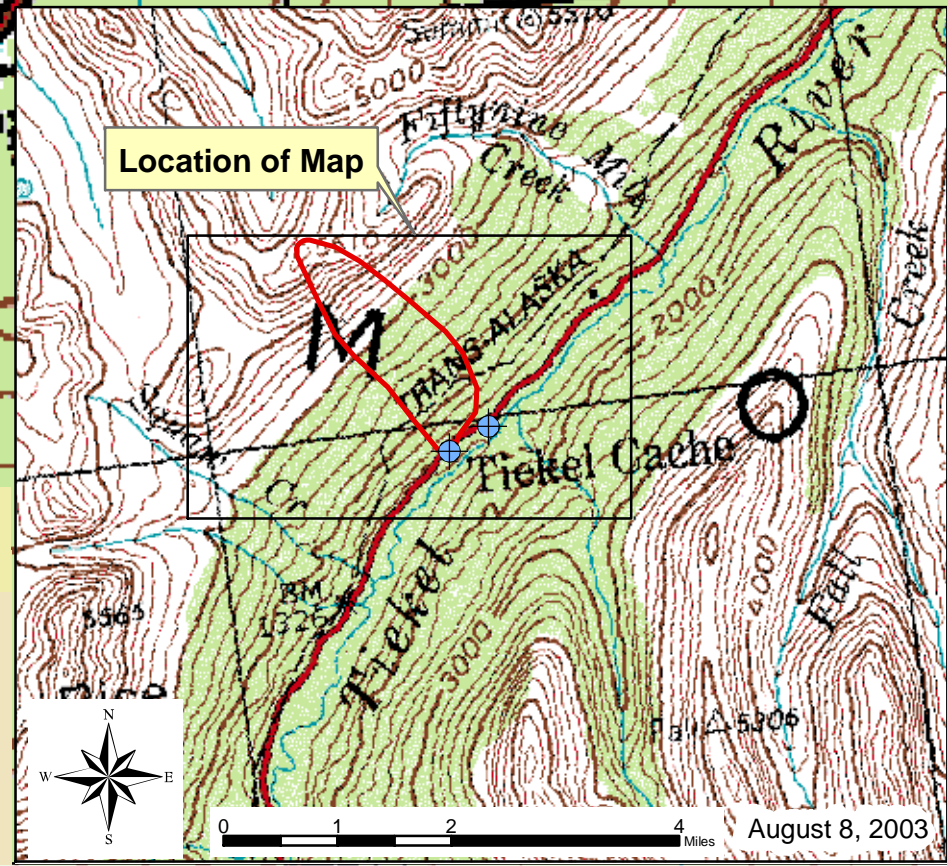
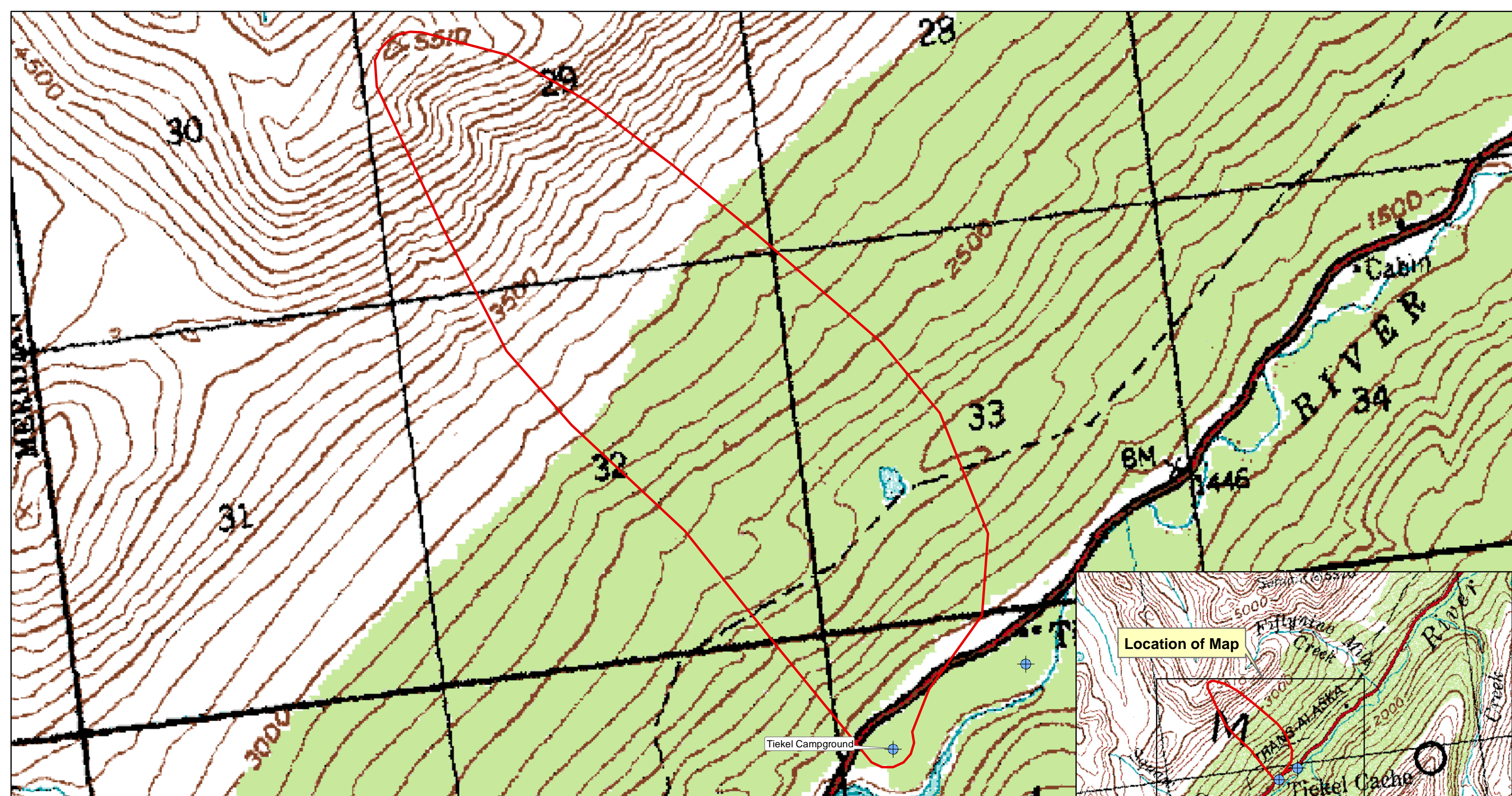
Recent sample data for the drinking water at Tielcel Campground indicates that volatile organic chemicals have not been detected in the water. However, after combining the contaminant risk for volatile organic chemicals with the natural susceptibility of the well, the overall vulnerability of the well to contamination by volatile organic chemicals is **Low**.

REFERENCES

- Alaska Department of Community and Economic Development, Alaska Community Database, Detailed Community Information (2002). <http://www.dced.state.ak.us/mra/CF_BLOCK.cfm> (2003, September 1).
- Alaska Department of Natural Resources, Well Log Tracking System (2002). <<http://info.dec.state.ak.us/welts/Default.asp>> (2003, September 1)
- Alaska Geospatial Data Clearinghouse (2003). <<http://agdc.usgs.gov/data/datasets.html>> (2003, September 1)
- Freeze, R. Allen, and John A. Cherry, Groundwater. Englewood Cliffs: Prentice-Hall 1979.
- King, P.B., compiler, 1969, Tectonic map of North America: US Geological Survey Map (Scale 1:5,000,000) 2 sheets.
- United States Environmental Protection Agency (2002). <<http://www.epa.gov/safewater/mcl.html#mcls>> (2003, September 1)

APPENDIX A

Tiekel Campground Drinking Water Protection Area Location Map (Map 1)



Map 1: Tikel Campground Drinking Water Protection Areas

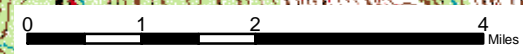
PWSID: 291978.001



1:14,790

Data Sources:
Background image - USGS 1:63,000 mapping

- Legend**
- ⊕ Public Drinking Water Systems
 - DWPA Zone A
Several Months Travel Time
 - DWPA Zone B
Less than 2 Years Travel Time
 - DWPA Zone C
Less than 5 Years Travel Time
 - DWPA Zone D
Less than 10 Years Travel Time



August 8, 2003

APPENDIX B

Contaminant Source Inventory and Risk Ranking for Tiekel Campground (Tables 1-4)

Table 1**Contaminant Source Inventory for
Tiegel Campground****PWSID 291978.001**

| Contaminant Source Type | Contaminant Source ID | CS ID tag | Zone | Map Number | Comments |
|---|------------------------------|------------------|-------------|-------------------|--------------------------------|
| Pit toilets (open hole), nonresidential (one or more) | D16 | D16-1 | A | 2 | Tiegel Campground Pit Toilets |
| Highways and roads, paved (cement or asphalt) | X20 | X20-1 | A | 2 | Highway Past Tiegel Campground |
| Campgrounds and RV Parks | X35 | X35-1 | A | 2 | Tiegel Campground |

**Contaminant Source Inventory and Risk Ranking for
Tiegel Campground
Sources of Bacteria and Viruses**

PWSID 291978.001

Table 2

| Contaminant Source Type | Contaminant Source ID | CS ID tag | Zone | Risk Ranking for Analysis | Map Number | Comments |
|---|------------------------------|------------------|-------------|----------------------------------|-------------------|--------------------------------|
| Pit toilets (open hole), nonresidential (one or more) | D16 | D16-1 | A | Medium | 2 | Tiegel Campground Pit Toilets |
| Highways and roads, paved (cement or asphalt) | X20 | X20-1 | A | Low | 2 | Highway Past Tiegel Campground |
| Campgrounds and RV Parks | X35 | X35-1 | A | Low | 2 | Tiegel Campground |

**Contaminant Source Inventory and Risk Ranking for
Tiegel Campground
Sources of Nitrates/Nitrites**

PWSID 291978.001

Table 3

| Contaminant Source Type | Contaminant Source ID | CS ID tag | Zone | Risk Ranking for Analysis | Map Number | Comments |
|---|------------------------------|------------------|-------------|----------------------------------|-------------------|--------------------------------|
| Pit toilets (open hole), nonresidential (one or more) | D16 | D16-1 | A | Medium | 2 | Tiegel Campground Pit Toilets |
| Highways and roads, paved (cement or asphalt) | X20 | X20-1 | A | Low | 2 | Highway Past Tiegel Campground |
| Campgrounds and RV Parks | X35 | X35-1 | A | Low | 2 | Tiegel Campground |

**Contaminant Source Inventory and Risk Ranking for
Tiegel Campground
Sources of Volatile Organic Chemicals**

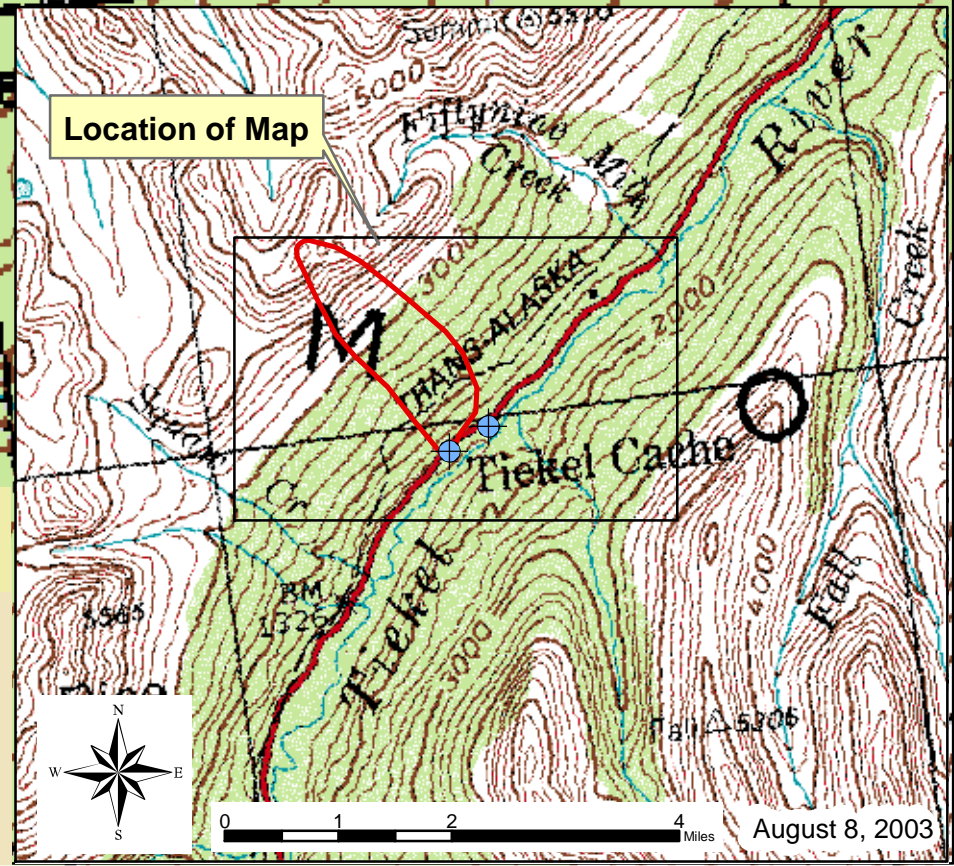
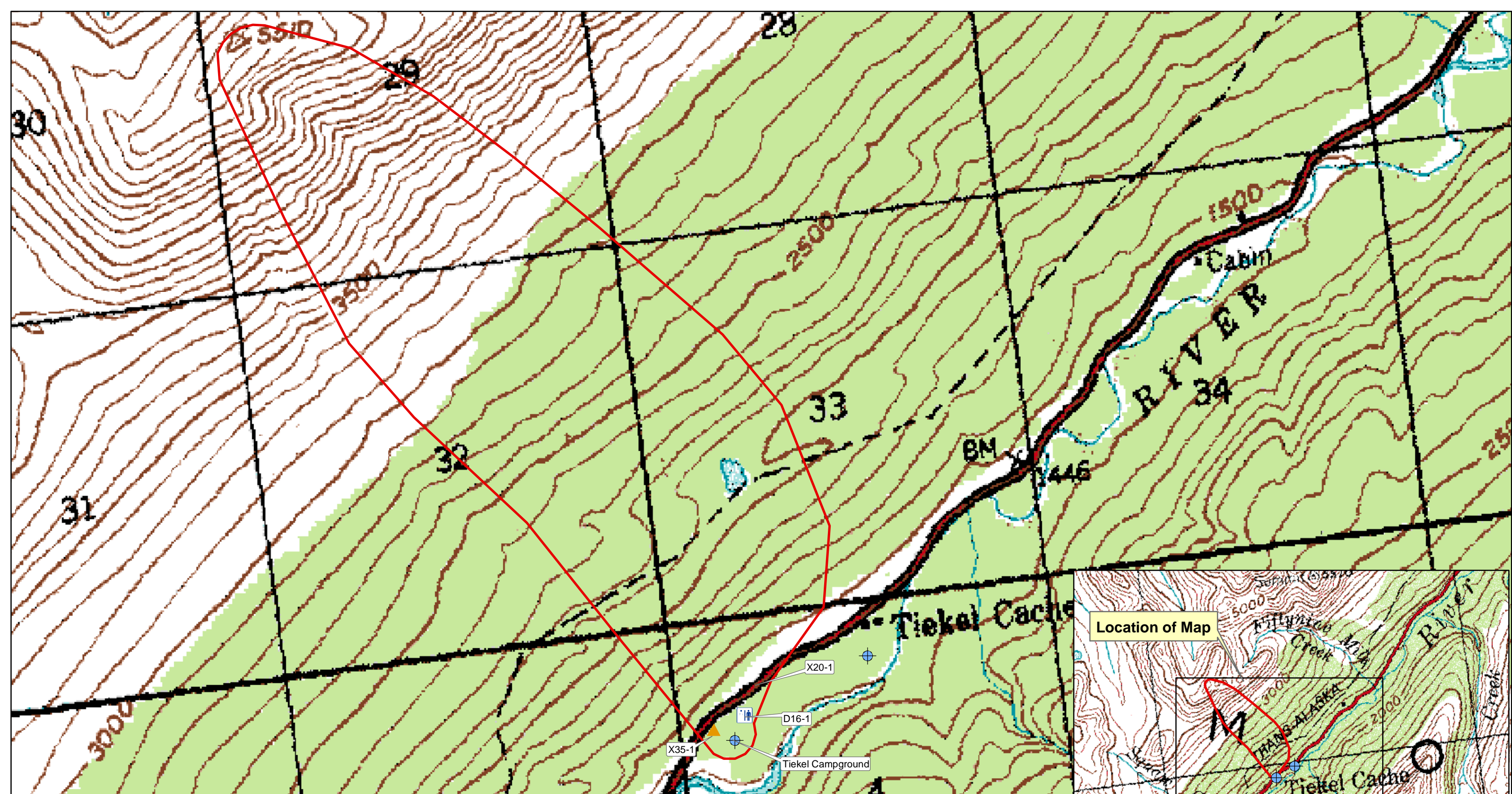
PWSID 291978.001

Table 4

| Contaminant Source Type | Contaminant Source ID | CS ID tag | Zone | Risk Ranking for Analysis | Map Number | Comments |
|---|------------------------------|------------------|-------------|----------------------------------|-------------------|--------------------------------|
| Pit toilets (open hole), nonresidential (one or more) | D16 | D16-1 | A | Low | 2 | Tiegel Campground Pit Toilets |
| Highways and roads, paved (cement or asphalt) | X20 | X20-1 | A | Low | 2 | Highway Past Tiegel Campground |
| Campgrounds and RV Parks | X35 | X35-1 | A | Low | 2 | Tiegel Campground |

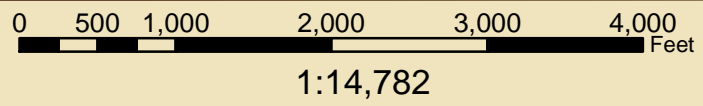
APPENDIX C

Tiekel Campground Drinking Water Protection Area and Potential and Existing Contaminant Sources (Map 2)



Map 2: Drinking Water Protection Areas for Tielke Campground and Potential and Existing Sources of Contamination

PWSID: 291978.001



Data Sources:
Background image - USGS 1:63,000 mapping

- Legend**
- Public Drinking Water Systems
 - Campground (X35)
 - Pit Toilets (D16)
 - DWPA Zone A**
 - Several Months Travel Time
 - DWPA Zone B**
 - Less than 2 Years Travel Time
 - DWPA Zone C**
 - Less than 5 Years Travel Time
 - DWPA Zone D**
 - Less than 10 Years Travel Time



August 8, 2003

APPENDIX D

Vulnerability Analysis for Tiekel Campground Public Drinking Water Source (Charts 1-8)

Chart 1. Susceptibility of the wellhead - Tielkel Campground

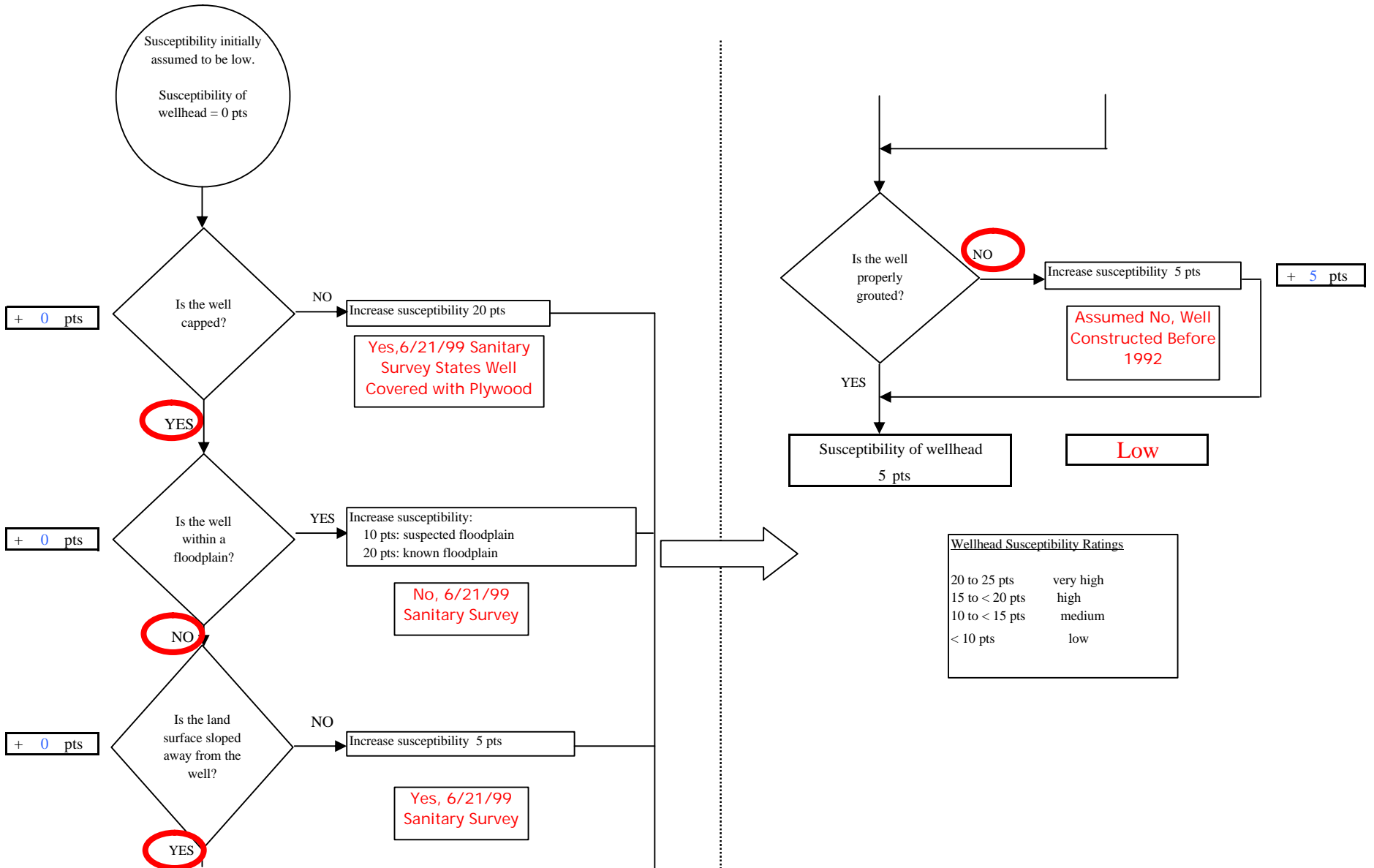


Chart 2. Susceptibility of the aquifer - Tiekel Campground

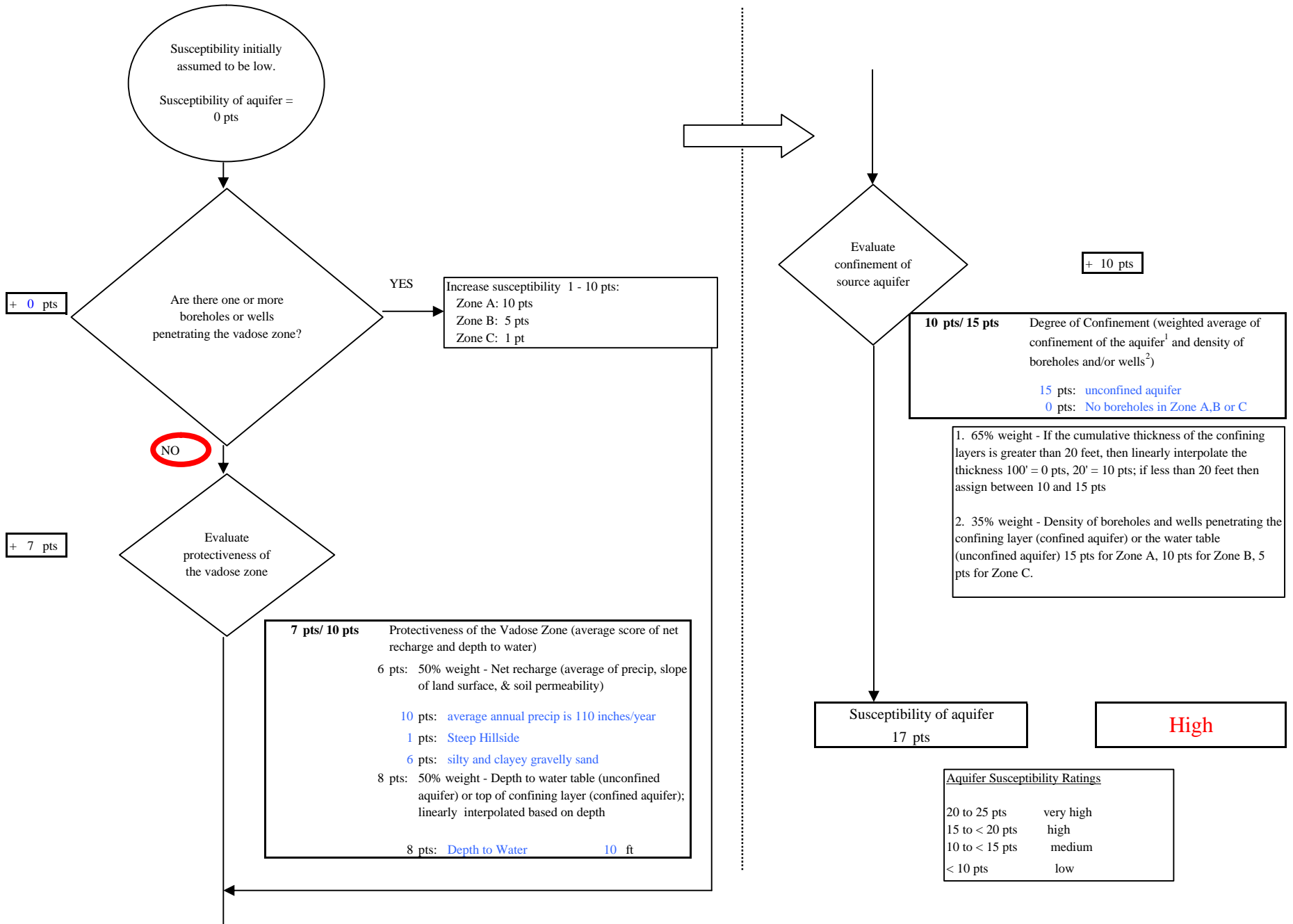


Chart 3. Contaminant risks for Tiekel Campground - Bacteria & Viruses

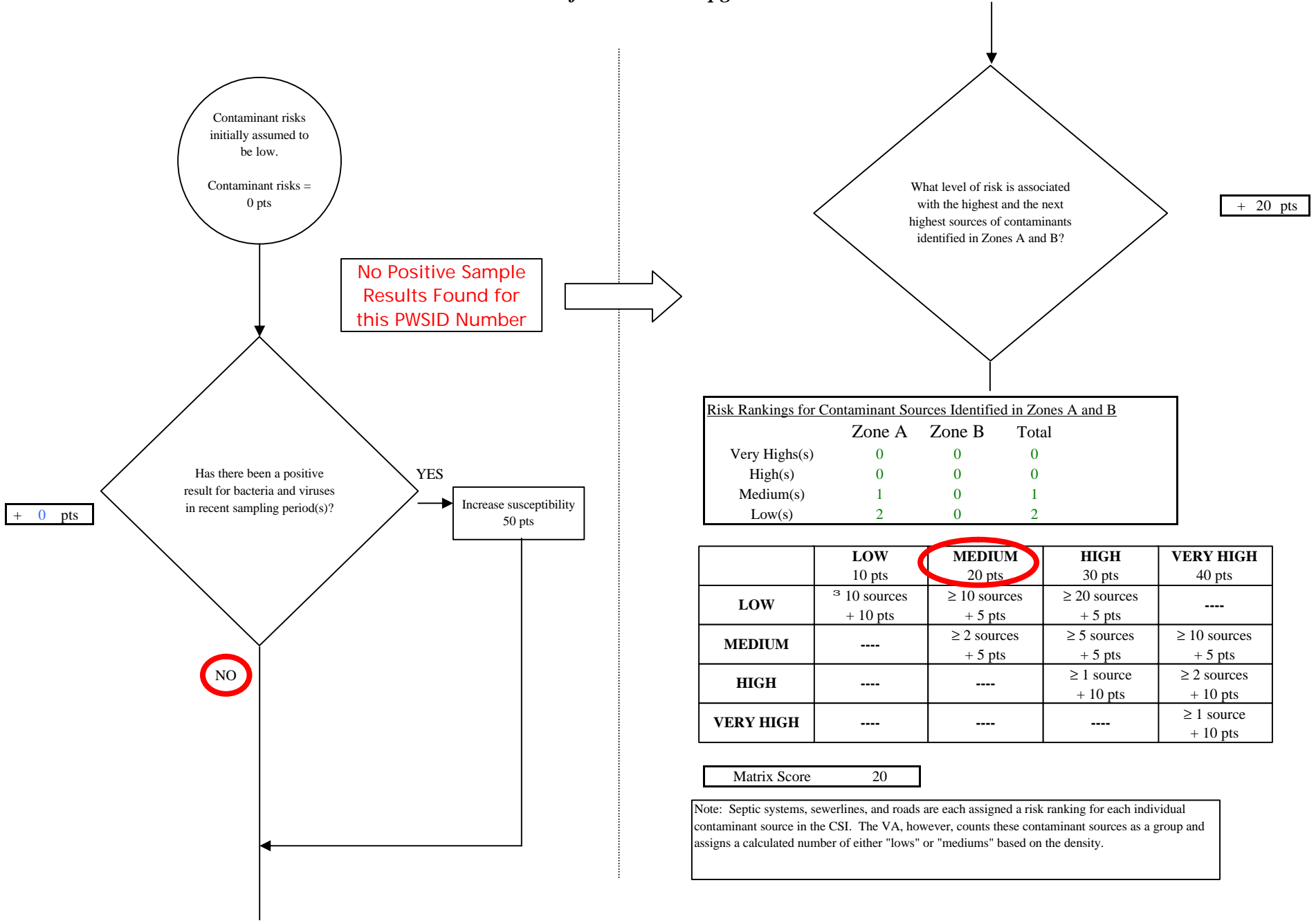
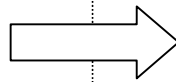
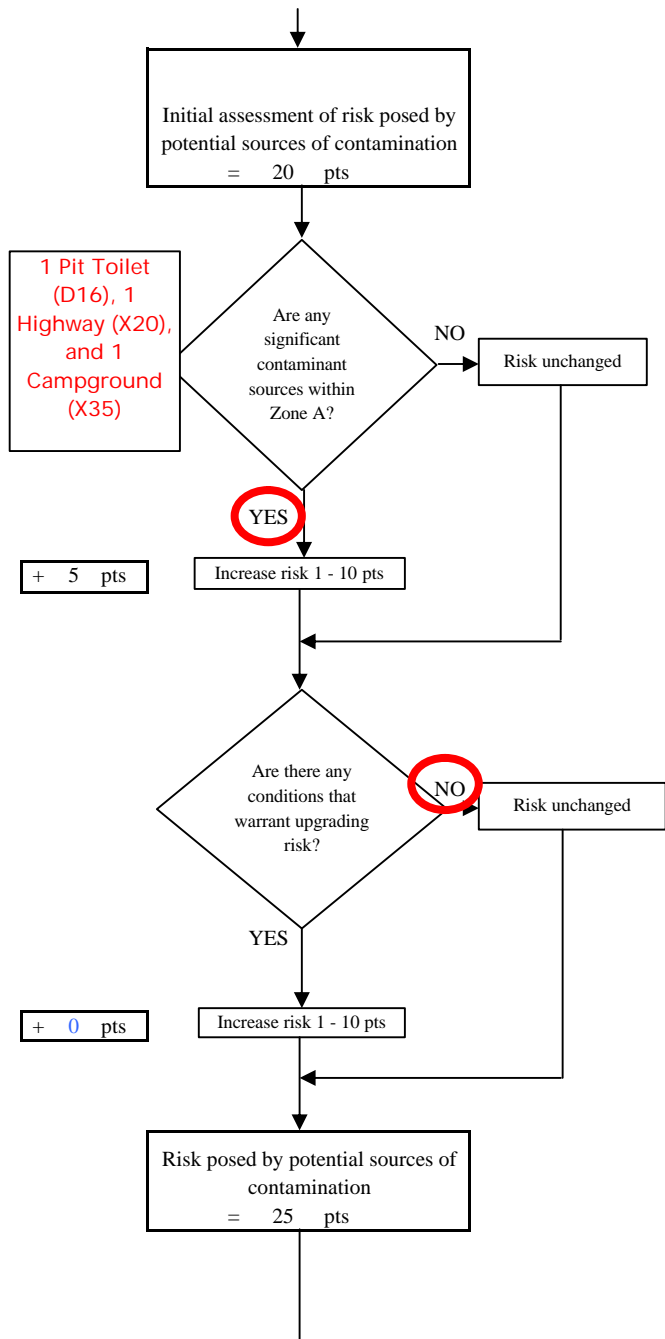
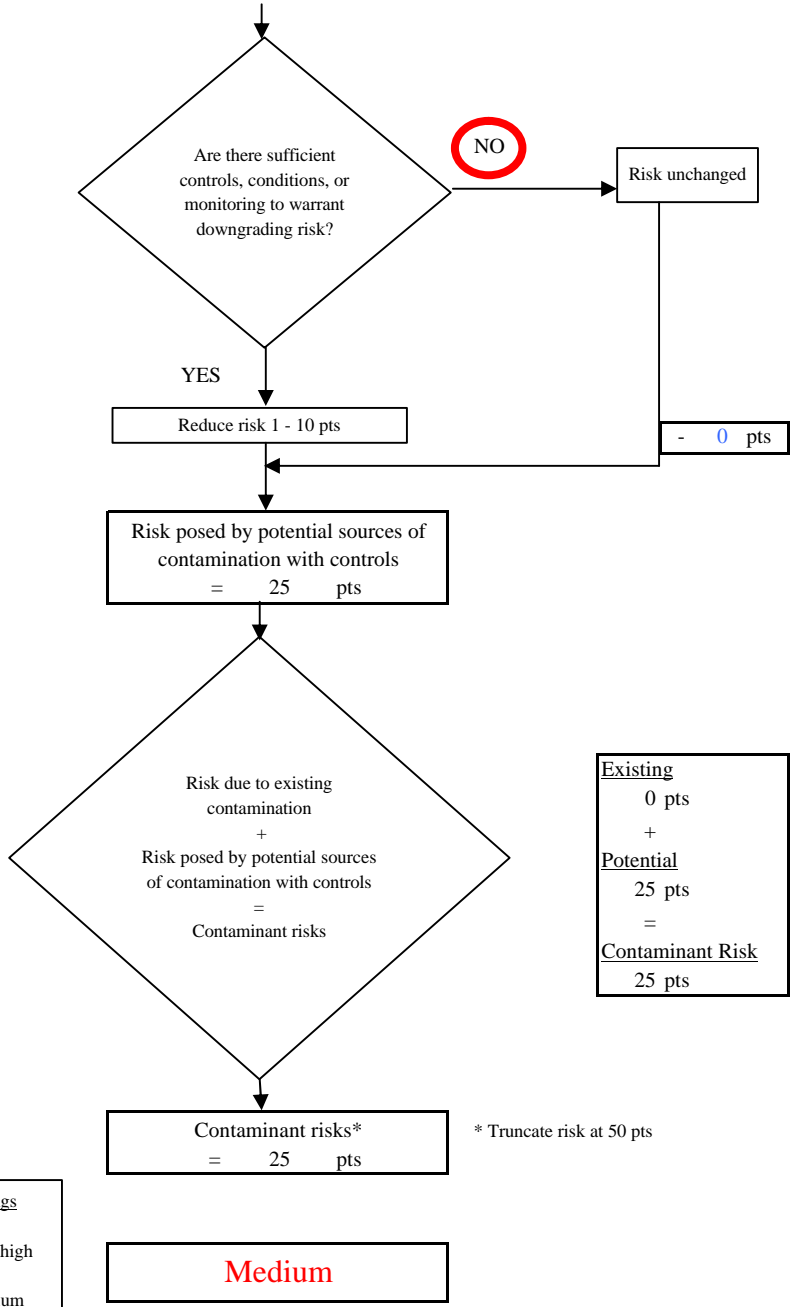


Chart 3. Contaminant risks for Tiekel Campground - Bacteria & Viruses



| Contaminant Risk Ratings | |
|--------------------------|-----------|
| 40 to 50 pts | very high |
| 30 to < 40 pts | high |
| 20 to < 30 pts | medium |
| < 20 pts | low |



| | |
|------------------|--------|
| Existing | 0 pts |
| + | |
| Potential | 25 pts |
| = | |
| Contaminant Risk | 25 pts |

Chart 4. Vulnerability analysis for Tielkel Campground - Bacteria & Viruses

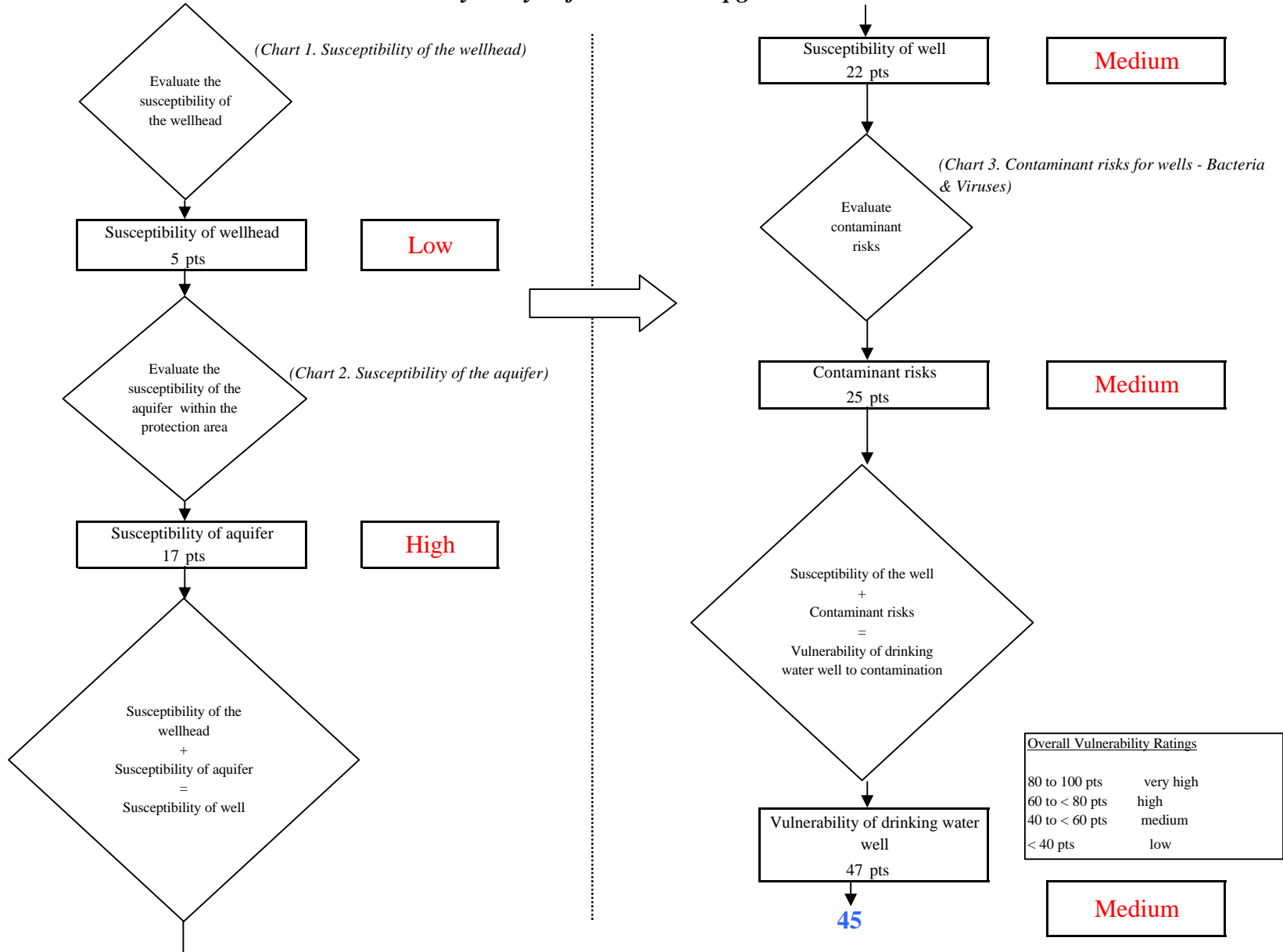


Chart 5. Contaminant risks for Tiekel Campground - Nitrates and Nitrites

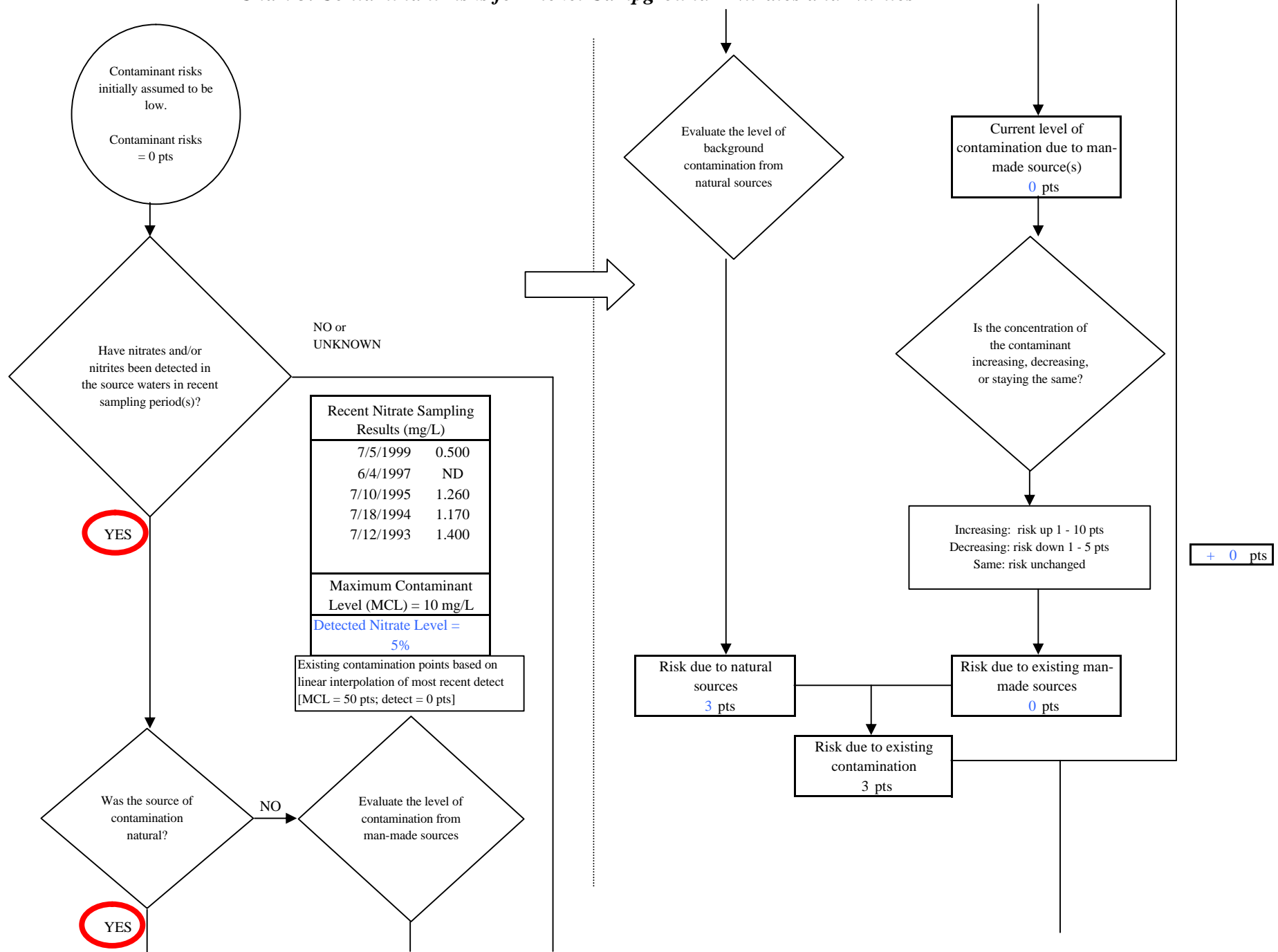


Chart 5. Contaminant risks for Tiekel Campground - Nitrates and Nitrites

What level of risk is associated with the highest and the next highest risk sources(s) of contaminants identified in Zones A, B and C?

+ 20 pts

| | Zone A | Zones B&C | Total |
|---------------|--------|-----------|-------|
| Very Highs(s) | 0 | 0 | 0 |
| High(s) | 0 | 0 | 0 |
| Medium(s) | 1 | 0 | 1 |
| Low(s) | 2 | 0 | 2 |

| | LOW 10 pts | MEDIUM 20 pts | HIGH 30 pts | VERY HIGH 40 pts |
|------------------|--------------------------|--------------------------|-------------------------|-------------------------|
| LOW | ≥ 10 sources + 10 pts | ≥ 10 sources + 5 pts | ≥ 20 sources + 5 pts | ---- |
| MEDIUM | ---- | ≥ 2 sources + 5 pts | ≥ 5 sources + 5 pts | ≥ 10 sources + 5 pts |
| HIGH | ---- | ---- | ≥ 1 source + 10 pts | ≥ 2 sources + 10 pts |
| VERY HIGH | ---- | ---- | ---- | ≥ 1 source + 10 pts |

Matrix Score 20

Note: Septic systems, sewerlines, and roads are each assigned a risk ranking for each individual contaminant source in the CSI. The VA, however, counts these contaminant sources as a group and assigns a calculated number of either "lows" or "mediums" based on the density.

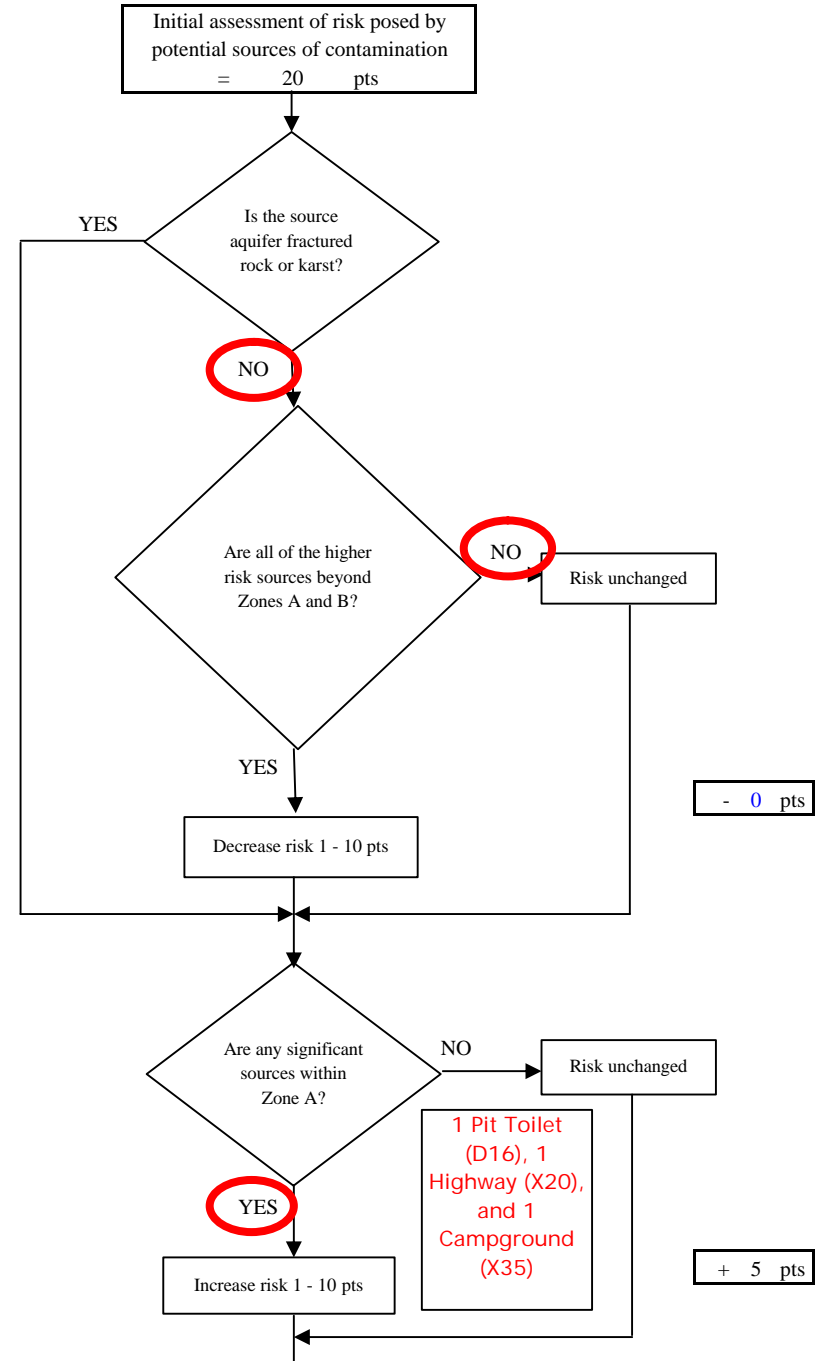


Chart 5. Contaminant risks for Tiekel Campground - Nitrates and Nitrites

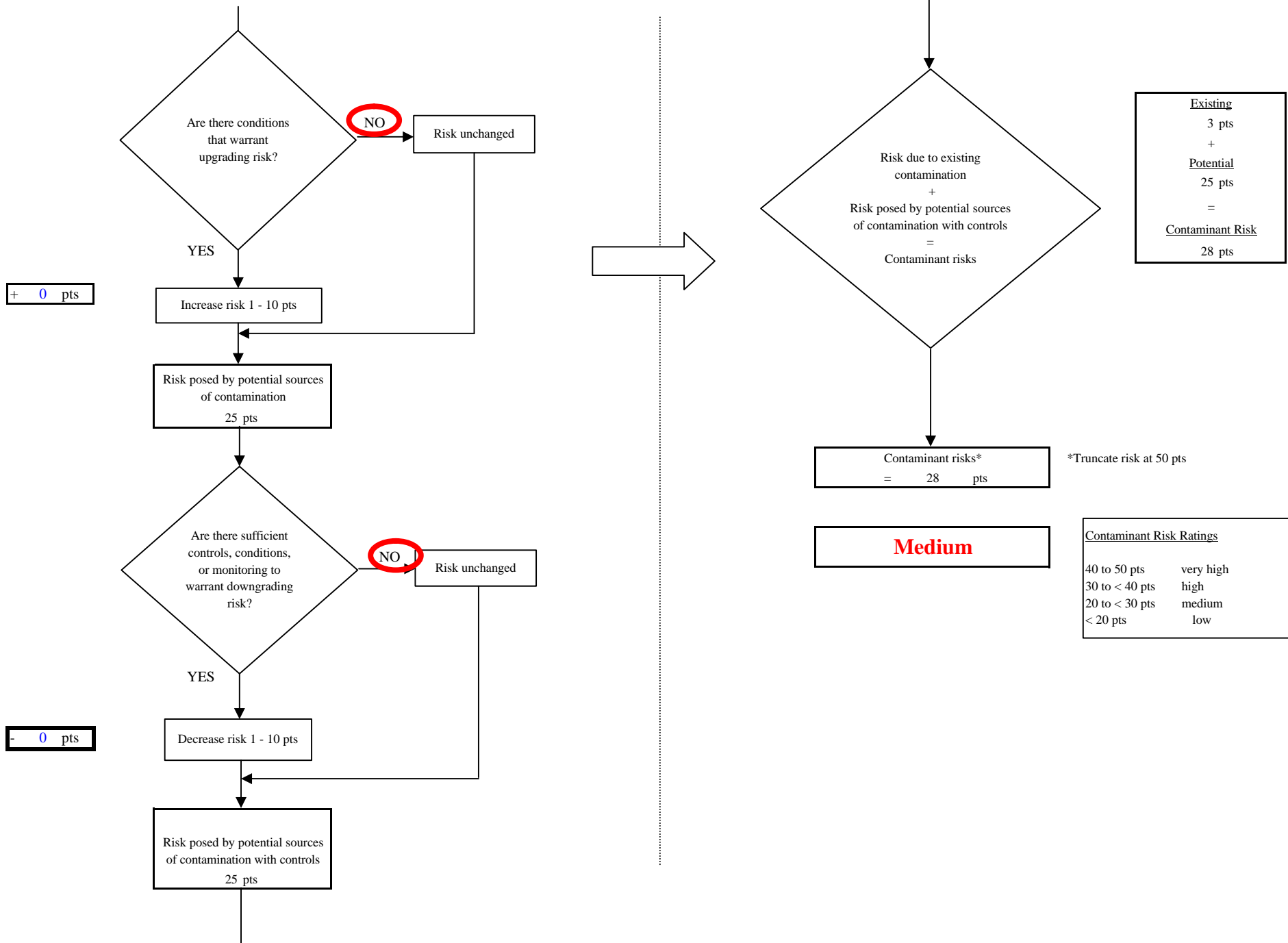


Chart 6. Vulnerability analysis for Tiekel Campground - Nitrates and Nitrites

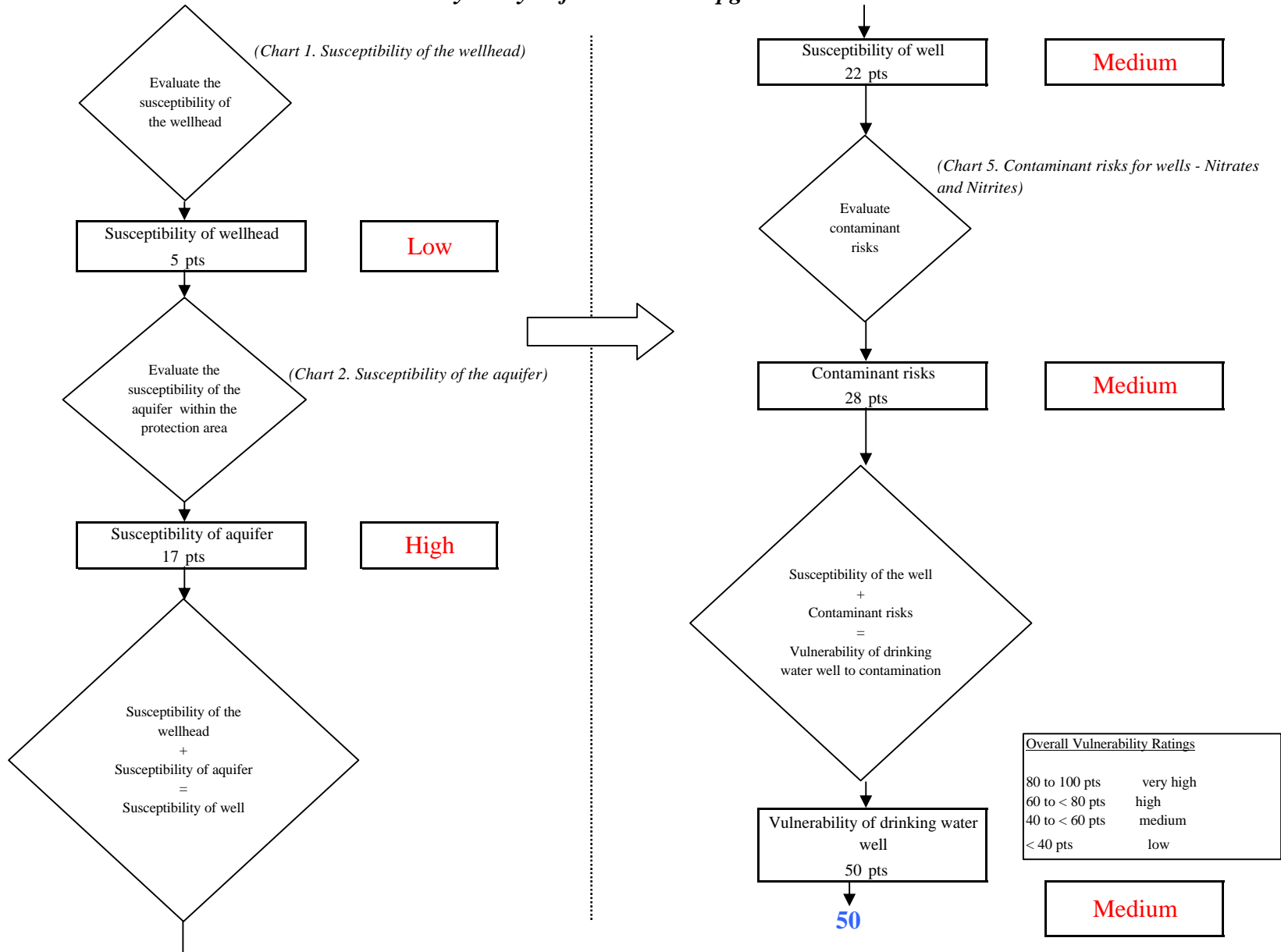


Chart 7. Contaminant risks for Tiekel Campground - Volatile Organic Chemicals

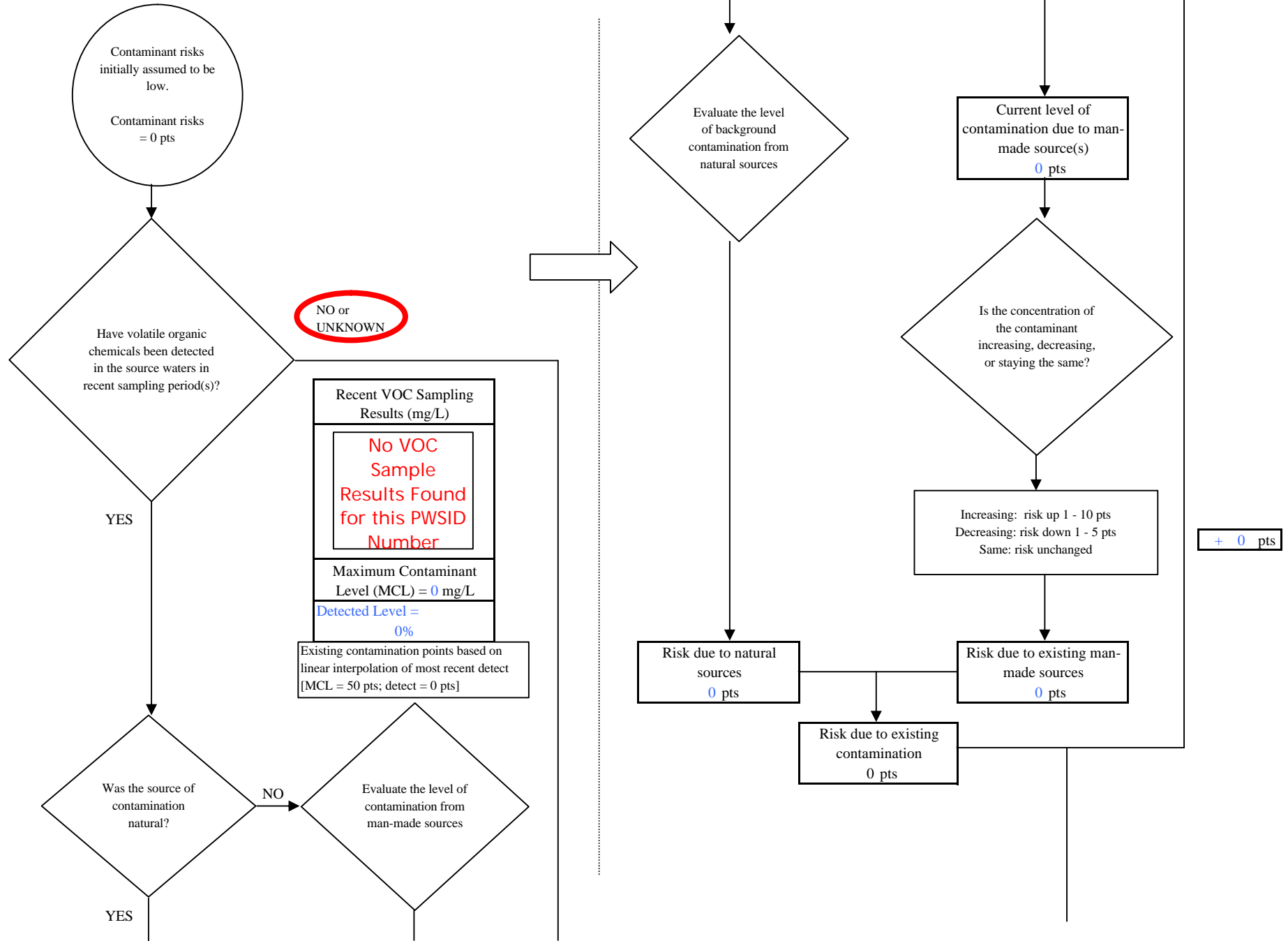


Chart 7. Contaminant risks for Tielke Campground - Volatile Organic Chemicals

What level of risk is associated with the highest and the next highest risk sources(s) of contaminants identified in Zones A, B and C?

+ 10 pts

| Risk Levels for Contaminant Sources identified in Zones A, B and C | | | |
|--|--------|-----------|-------|
| | Zone A | Zones B&C | Total |
| Very High(s) | 0 | 0 | 0 |
| High(s) | 0 | 0 | 0 |
| Medium(s) | 0 | 0 | 0 |
| Low(s) | 3 | 0 | 3 |

| | LOW 10 pts | MEDIUM 20 pts | HIGH 30 pts | VERY HIGH 40 pts |
|------------------|--------------------------|-------------------------|-------------------------|----------------------------|
| LOW | ≥ 10 sources + 10 pts | ≥ 10 sources + 5 pts | ≥ 20 sources + 5 pts | ---- |
| MEDIUM | ---- | ≥ 2 sources + 5 pts | ≥ 5 sources + 5 pts | ≥ 10 sources + 5 pts |
| HIGH | ---- | ---- | ≥ 1 source + 10 pts | ≥ 2 sources + 10 pts |
| VERY HIGH | ---- | ---- | ---- | ≥ 1 source + 10 pts |

Matrix Score 10

Note: Septic systems, sewerlines, and roads are each assigned a risk ranking for each individual contaminant source in the CSI. The VA, however, counts these contaminant sources as a group and assigns a calculated number of either "lows" or "mediums" based on the density.

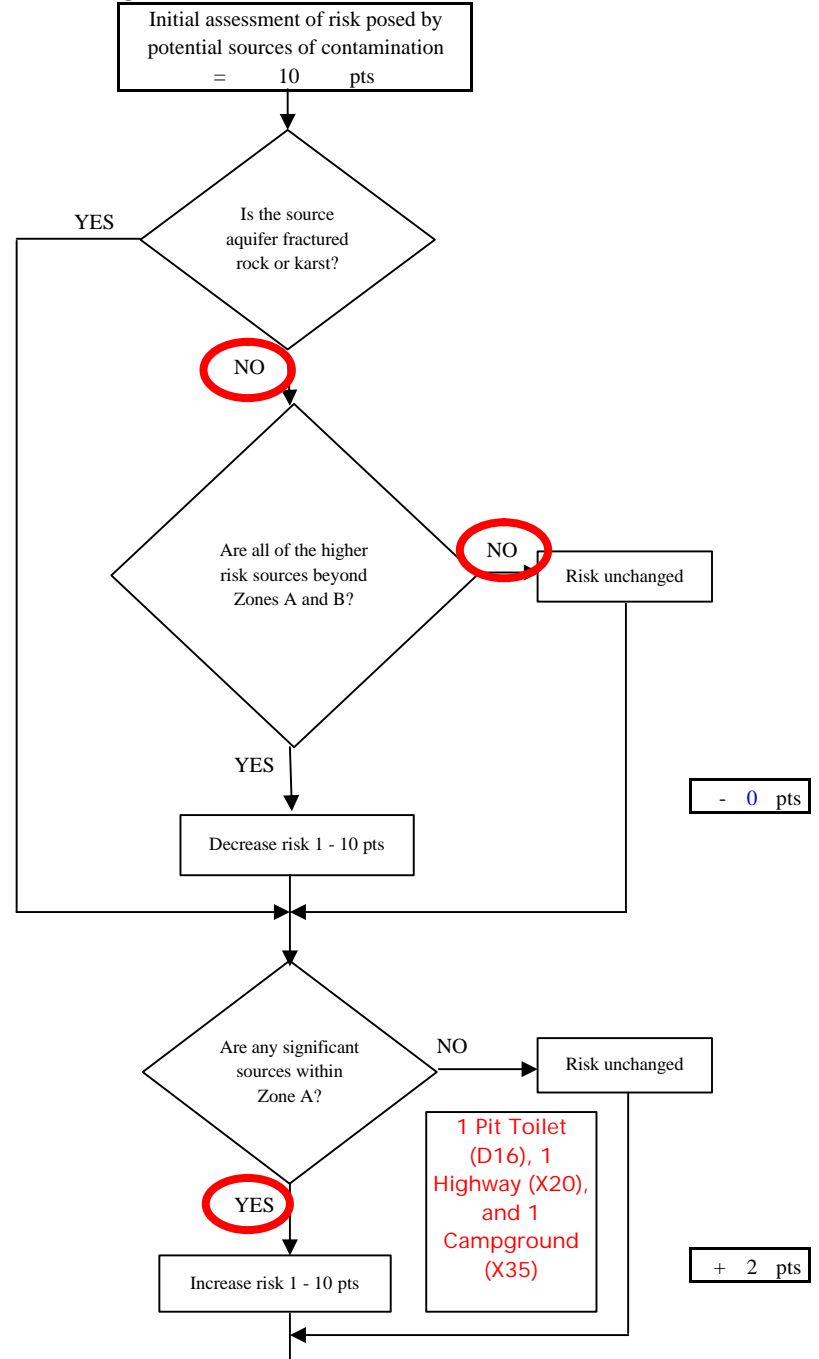
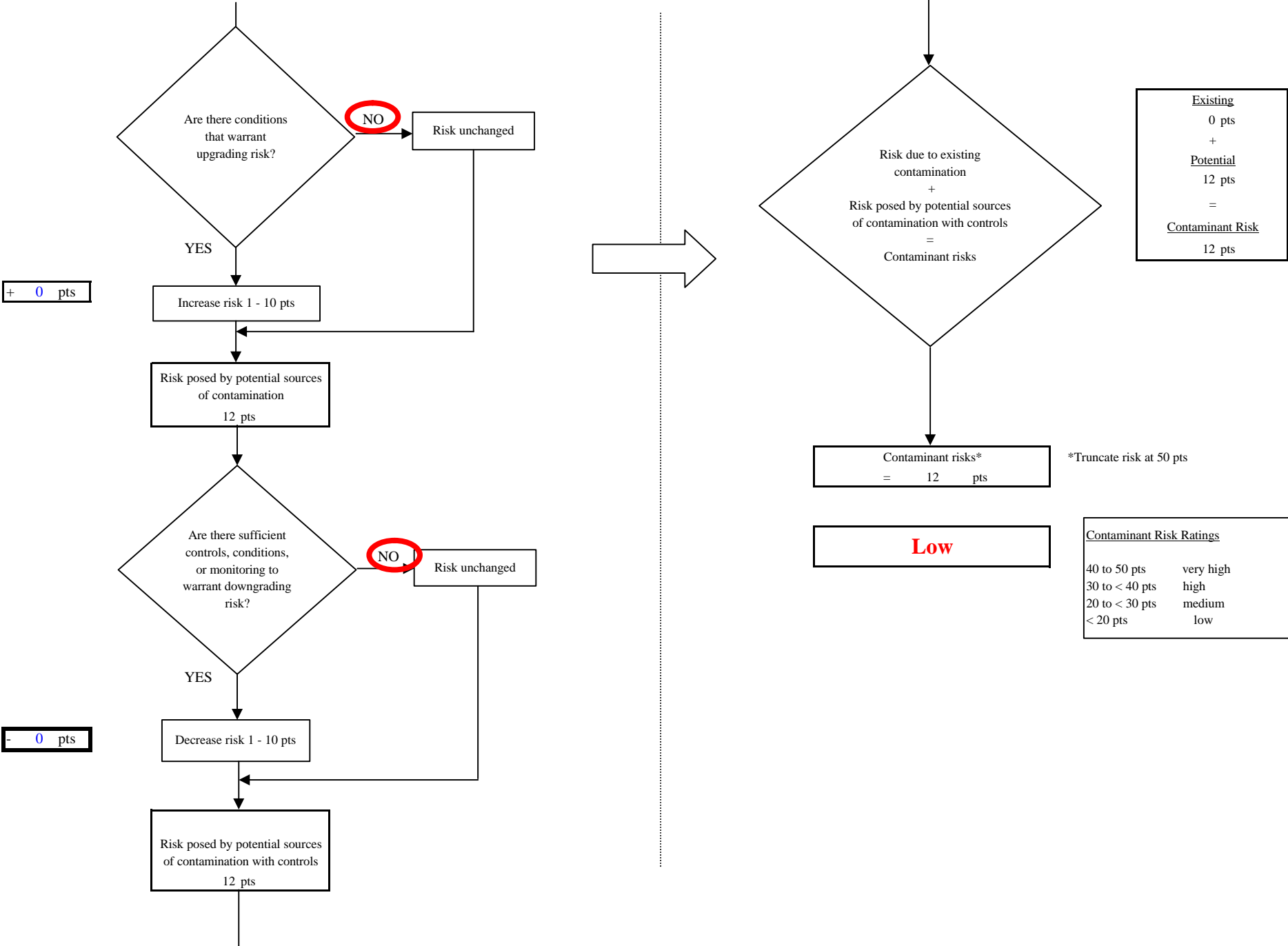


Chart 7. Contaminant risks for Tiekel Campground - Volatile Organic Chemicals



+ 0 pts

- 0 pts

Chart 8. Vulnerability analysis for Tiekel Campground - Volatile Organic Chemicals

