



---

# Source Water Assessment

A Hydrogeologic Susceptibility and  
Vulnerability Assessment for  
Riverside Kwik Mart and Deli  
Public Drinking Water System,  
Sutton - Alpine, Alaska  
PWSID # 220104.001

DRINKING WATER PROTECTION REPORT 1641

Alaska Department of Environmental Conservation

January, 2009

Source Water Assessment for  
Riverside Kwik Mart and Deli  
Public Drinking Water System,  
Sutton - Alpine, Alaska  
PWSID# 220104.001

DRINKING WATER PROTECTION REPORT 1641

The Drinking Water Protection (DWP) section of the Drinking Water Program is producing Source Water Assessments in compliance with the Safe Drinking Water Act Amendments of 1996. Each assessment includes a delineation of the source water area, an inventory of potential and existing contaminant sources that may impact the water, a risk ranking for each of these contaminants, and an evaluation of the potential vulnerability of these drinking water sources.

These assessments are intended to provide public water systems owners/operators, communities, and local governments with the best available information that may be used to protect the quality of their drinking water. The assessments combine information obtained from various sources, including the U.S. Environmental Protection Agency, Alaska Department of Environmental Conservation (DEC), public water system owners/operators, and other public information sources. The results of this assessment are subject to change if additional data becomes available. It is anticipated this assessment will be updated every five years to reflect any changes in the vulnerability and/or susceptibility of public drinking water source. If you have any additional information that may affect the results of this assessment, please contact the DWP staff at the following toll-free number 1-866-956-7656.

January, 2009

## CONTENTS

	Page		Page
Executive Summary.....	1	Ranking of Contaminant Risks .....	2
Riverside Kwik Mart and Deli Public Drinking Water System .....	1	Vulnerability of Riverside Kwik Mart and Deli Drinking Water System.....	2
Riverside Kwik Mart and Deli Drinking Water Protection Area.....	1	References.....	5
Inventory of Potential and Existing Contaminant Sources.....	2	Appendix A.....	7
		Appendix B.....	9
		Appendix C.....	11

## TABLES

Table 1. Definition of Zones.....	2
Table 2. Susceptibility .....	3
Table 3. Contaminant Risks.....	3
Table 4. Overall Vulnerability .....	4

## APPENDICES

APPENDIX	A. Riverside Kwik Mart and Deli Drinking Water Protection Area (Map A)
	B. Contaminant Source Inventory for Riverside Kwik Mart and Deli (Table 1)
	Contaminant Source Inventory and Risk Ranking for Riverside Kwik Mart and Deli – Bacteria and Viruses (Table 2)
	Contaminant Source Inventory and Risk Ranking for Riverside Kwik Mart and Deli – Nitrates/Nitrites (Table 3)
	Contaminant Source Inventory and Risk Ranking for Riverside Kwik Mart and Deli – Volatile Organic Chemicals (Table 4)
	C. Riverside Kwik Mart and Deli Drinking Water Protection Area and Potential and Existing Contaminant Sources (Map C)

# Source Water Assessment for Riverside Kwik Mart and Deli Source of Public Drinking Water, Sutton-Alpine, Alaska

---

## Drinking Water Protection Alaska Department of Environmental Conservation

### EXECUTIVE SUMMARY

The public water system for Riverside Kwik Mart and Deli is a Class B (transient/non-community) water system consisting of one well located at Mile 63 of the Glenn Highway, in Sutton-Alpine, Alaska. The wellhead received a susceptibility rating of **Very High** and the aquifer received a susceptibility rating of **Very High**. Combining these two ratings produces a **Very High** rating for the natural susceptibility of the well. Identified potential and existing sources of contaminants for Riverside Kwik Mart and Deli public drinking water source include: assumed septic systems, assumed residential heating oil tanks, roads, a fuel tank, coal mining (active or inactive); DEC recognized, non-Superfund contaminated sites; an Open Leaking Underground Fuel Storage Tank (LUST) site; and a campground or RV park. These identified potential and existing sources of contamination are considered as sources of bacteria and viruses, nitrates and/or nitrites, and volatile organic chemicals. Overall, the public water sources for Riverside Kwik Mart and Deli received a vulnerability rating of **High** for bacteria and viruses, **High** for nitrates and nitrites, and **Very High** for volatile organic chemicals. This assessment of contaminant risks can be used as a foundation for local voluntary protection efforts as well as a basis for the continuous efforts on the part of Riverside Kwik Mart and Deli to protect public health.

### RIVERSIDE KWIK MART AND DELI PUBLIC DRINKING WATER SYSTEM

The Riverside Kwik Mart and Deli public water system is a Class B (transient/non-community) water system. The system consists of one well located at Mile 63 of the Glenn Highway, in Sutton-Alpine, Alaska (see Map A in Appendix A). The community of Sutton-Alpine (population 1,318) is located on the north bank of the Matanuska River, between Mileposts 52 and 72 of the Glenn Highway, 11 miles northeast of Palmer, Alaska. It lies within the Matanuska-Susitna Borough, which has a population of approximately 80,000 (ADCCED, 2009).

The area receives 16.5 inches of precipitation annually, with average January temperatures ranging from -35 to 37 degrees Fahrenheit, and average July temperatures ranging from 45 to 85 degrees Fahrenheit (ADCCED, 2009).

Most homes in Sutton use individual water wells and septic systems. Refuse is transported to a transfer station near the Sutton Fire Station. Electricity is provided by Matanuska Electric Association (ADCCED, 2009).

According to the well report (10/21/1984), the Riverside Kwik Mart and Deli well extends approximately 65 feet below the ground surface and is completed in an unconfined aquifer of sand and gravel.

This system operates year-round and serves three residents and up to three hundred non-residents through a single service connection.

### RIVERSIDE KWIK MART AND DELI DRINKING WATER PROTECTION AREA

In order to evaluate whether a drinking water source is at risk, we must first evaluate what are the most likely pathways for surface contamination to reach the groundwater. These areas are determined by looking at the characteristics of the soil, groundwater, aquifer, and well.

The most probable area for contamination to reach the drinking water well is the drinking water protection area. The drinking water protection area is the area circling the well (the area influenced by pumping) and also the area upgradient of the well, usually forming a parabola shape. Because releases of contaminants within the protection area are most likely to impact the well, this area will serve as the focus for voluntary protection efforts.

There are many different methods for calculating the size of protection areas. Drinking Water Protection (DWP) uses a combination of two simple groundwater flow equations, the Thiem and uniform flow equations for all groundwater wells screened in unconsolidated material. The orientation of the protection zone is then drawn using a water table elevation map (if available) or a land surface elevation map of the area. The protection zone calculated by DWP is an estimate using the available information and resources, and may differ slightly from the actual capture zone. Because of uncertainties and changing site conditions, a factor of safety is added to the protection zone to form the drinking water protection area for the well.

The parameters used to calculate the shape of this protection zone are general for the whole alluvial plain and were obtained from various United States Geological Survey (USGS) reports, area well logs, and the Groundwater textbook by Freeze and Cherry (Freeze and Cherry 1979).

The protection areas established for wells by the DEC are usually separated into two zones, limited by the watershed. These zones correspond to differences in the time-of-travel (TOT) of the water moving through the aquifer to the well. An analytical calculation was used to determine the size and shape of the protection area.

The time-of-travel for contaminants within the water varies and is dependent on the physical and chemical characteristics of each contaminant. The following is a summary of the two protection area zones for wells and the calculated time-of-travel for each:

**Table 1. Definition of Zones**

Zone	Definition
A	Several months time-of-travel
B	Less than the 2 year time-of-travel

The drinking water protection area for Riverside Kwik Mart and Deli was determined using an analytical calculation and includes Zones A and B (see Map A in Appendix A).

### INVENTORY OF POTENTIAL AND EXISTING CONTAMINANT SOURCES

DWP has completed an inventory of potential and existing sources of contamination within the Riverside Kwik Mart and Deli drinking water protection area. This inventory was completed through a search of agency records and other publicly available information. Potential sources of contamination to the drinking water aquifer include a wide range of categories and types. Potential drinking water contaminants are found within agricultural, residential, commercial, and industrial areas, but can also occur within areas that have little or no development.

For the basis of all Class B public water system assessments, the following three categories of drinking water contaminants were inventoried:

- Bacteria and viruses;
- Nitrates and/or nitrites;
- Volatile organic chemicals

The sources are displayed on Map C of Appendix C and summarized in Table 1 of Appendix B.

### RANKING OF CONTAMINANT RISKS

Once the potential and existing sources of contamination have been identified, they are assigned a ranking according to what type and level of risk they represent. Ranking of contaminant risks for a “potential” or “existing” source of contamination is a function of toxicity and volumes of specific contaminants associated with that source. Rankings include:

- Low;
- Medium;
- High; and
- Very High.

Tables 2 through 4 in Appendix B contain the ranking of potential and existing sources of contamination with respect to bacteria and viruses, nitrates and/or nitrites, and volatile organic chemicals.

### VULNERABILITY OF RIVERSIDE KWIK MART AND DELI DRINKING WATER SYSTEM

Vulnerability of a drinking water source to contamination is a combination of two factors:

- Natural Susceptibility; and
- Contaminant Risks.

A score for the Natural Susceptibility of the well is reached by considering the properties of the well and the aquifer.

Susceptibility of the Wellhead (0-25 Points)

+

Susceptibility of the Aquifer (0-25 Points)

=

Natural Susceptibility of the Well (0-50 Points)

A ranking is assigned for the Natural Susceptibility according to the point score:

Natural Susceptibility Ratings	
40-50 pts	Very High
30 to < 40 pts	High
20 to < 30 pts	Medium
< 20 pts	Low

Factors contributing to the susceptibility of the wellhead are: whether the sanitary seal is in place, protection from flooding, and if the well casing is properly grouted.

The wellhead for Riverside Kwik Mart and Deli received a **Very High** susceptibility rating. The most recent sanitary survey (06/25/2005) indicates that a sanitary seal is not installed on the well, the land surface is not appropriately sloped away from the well, and the well is not grouted according to DEC regulations. . Sanitary seals prevent potential contaminants from entering the well, while sloping of the land surface away from the wellhead provides adequate surface water drainage, and concrete or grouting around the wellhead helps to prevent potential contaminants from traveling down the outside of the well casing.

Factors contributing to the susceptibility of the aquifer are: whether the aquifer is confined or unconfined, whether the well is completed in unconsolidated or fractured bedrock, whether wells and bore holes are penetrating the aquifer and, if applicable, the depth and thickness of the confining layer.

The Riverside Kwik Mart and Deli system draws water from an unconfined aquifer consisting of sand and gravel. It received a **Very High** susceptibility rating because of its unconfined nature and the presence of other wells penetrating the vadose zone within the protection area. Because an unconfined aquifer is recharged by surface water and precipitation that migrates downward from the surface, it is susceptible to contamination from outside sources. Other wells penetrating the vadose zone of the protection area can allow contaminants to travel down to the shared aquifer with precipitation and runoff.

Table 2 summarizes the Susceptibility scores and ratings for the Riverside Kwik Mart and Deli system.

**Table 2. Susceptibility**

	<b>Score</b>	<b>Rating</b>
Susceptibility of the Wellhead	25	Very High
Susceptibility of the Aquifer	25	Very High
Natural Susceptibility	50	Very High

Contaminant risks are derived from an evaluation of the routine sampling results of the water system and the presence of potential sources of contamination. Contaminant risks to a drinking water source depend on the type and distribution of contaminant sources. Flow charts are used to assign a point score, and ratings are assigned in the same way as for the natural susceptibility:

Contaminant Risk Ratings	
40-50 pts	Very High
30 to < 40 pts	High
20 to < 30 pts	Medium
< 20 pts	Low

Table 3 summarizes the Contaminant Risks for each category of drinking water contaminants for the Riverside Kwik Mart and Deli system.

**Table 3. Contaminant Risks**

<b>Category</b>	<b>Score</b>	<b>Rating</b>
Bacteria and Viruses	12	Low
Nitrates and/or Nitrites	17	Low
Volatile Organic Chemicals	50	Very High

Finally, an overall vulnerability score is assigned for each water system by combining each of the contaminant risk scores with the natural susceptibility score:

$$\begin{aligned}
 &\text{Natural Susceptibility (0-50 Points)} \\
 &\quad + \\
 &\quad \text{Contaminant Risks (0-50 Points)} \\
 &\quad = \\
 &\text{Vulnerability of the Drinking Water Source to} \\
 &\quad \text{Contamination (0-100 Points)}
 \end{aligned}$$

Again, rankings are assigned according to a point score:

Overall Vulnerability Ratings	
80-100 pts	Very High
60 to < 80 pts	High
40 to < 60 pts	Medium
< 40 pts	Low

Table 4 contains the overall vulnerability scores (0-100) and ratings for each of the three categories of drinking water contaminants for the Riverside Kwik Mart and Deli system. Note: scores are rounded off to the nearest five.

**Table 4. Overall Vulnerability**

<b>Category</b>	<b>Score</b>	<b>Rating</b>
Bacteria and Viruses	60	High
Nitrates and/or Nitrites	65	High
Volatile Organic Chemicals	100	Very High

### **Bacteria and Viruses**

The contaminant risk to the drinking water well for bacteria and viruses is determined to be **Low** with assumed septic systems, roads, and a campground or RV park contributing to the risk to the drinking water well.

Coliforms (a bacteria) are found naturally in the environment and while not necessarily a direct health threat, they are an indicator of other potentially harmful bacteria in the water, more specifically fecal coliforms and E. coli. These bacteria only come from human and animal fecal waste and can cause diarrhea, cramps, nausea, headaches, and other symptoms (EPA, 2008).

Only a small number of bacteria and viruses are required to endanger public health. Positive samples increase the overall vulnerability of the drinking water source, indicating that the source is susceptible to bacteria and virus contamination. Bacteria and viruses have not recently been detected at Riverside Kwik Mart and Deli (data reviewed in April, 2008).

After combining the contaminant risk for bacteria and viruses with the natural susceptibility of the well, the overall vulnerability of the well to contamination is **High**.

### **Nitrates and Nitrites**

The contaminant risk for nitrates and nitrites for Riverside Kwik Mart and Deli is determined to be **Low** with assumed septic systems, roads, and a campground or RV park contributing to the risk to the drinking water well.

The sampling history for Riverside Kwik Mart and Deli indicates that nitrates and nitrites have been detected several times within the last five years, with the highest concentration of 0.92 mg/L detected on 10/01/2007 (data reviewed in April, 2008).

After combining the contaminant risk for nitrates and nitrites with the natural susceptibility of the well, the overall vulnerability of the well to contamination is **High**.

### **Volatile Organic Chemicals**

The contaminant risk for volatile organic chemicals is determined to be **Very High** with assumed septic systems, assumed residential heating oil tanks, roads, a fuel tank, coal mining (active or inactive); and a campground or RV park contributing to the risk to the drinking water well.

The drinking water at Riverside Kwik Mart and Deli has not recently been sampled for volatile organic chemicals (data reviewed in April, 2008).

After combining the contaminant risk for volatile organic chemicals with the natural susceptibility of the well, the overall vulnerability of the well to contamination is **Very High**.

### **Using the Source Water Assessment**

This assessment of contaminant risks can be used as a foundation for local voluntary protection efforts as well as a basis for the continuous efforts on the part of Riverside Kwik Mart and Deli to protect public health. It is anticipated that Source Water Assessments will be updated every five years to reflect any changes in the vulnerability and/or susceptibility of the Riverside Kwik Mart and Deli drinking water source.

## REFERENCES

Alaska Department of Commerce, Community and Economic Development (ADCCED), Accessed 2009 [WWW document]. URL: [http://www.commerce.state.ak.us/dca/commdb/CF\\_COMDB.htm](http://www.commerce.state.ak.us/dca/commdb/CF_COMDB.htm)

Freeze, R.A. and Cherry, J.A., 1979. Groundwater. Prentice-Hall, Englewood Cliffs, NJ.

United States Environmental Protection Agency (EPA), Accessed 2008 [WWW document]. URL: <http://www.epa.gov/safewater/contaminants/index.html>.



## **APPENDIX A**

### **Riverside Kwik Mart and Deli Drinking Water Protection Area Location Map (Map A)**

Public Water Well System for PWS #220104.001 Riverside Kwik Mart & Deli



**Legend**

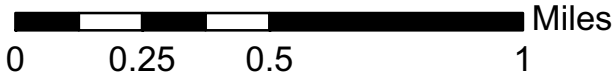
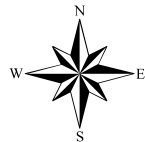
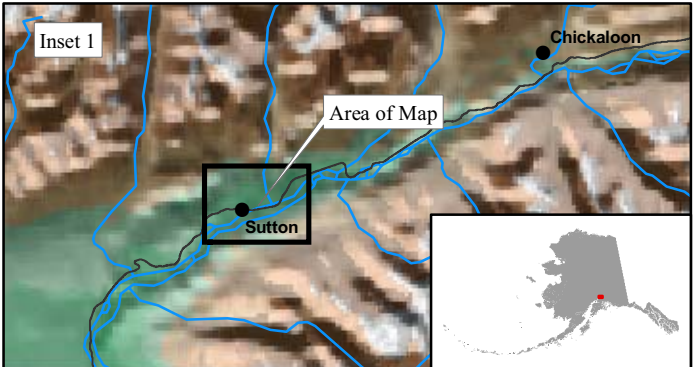
- Class B Public Water System Well
- Groundwater Protection Zones**
- Zone A Protection Area - Several Months Travel Time
  - Zone B Protection Area - 2 Years Travel Time

**Data Sources:**  
 Contaminant Sources, Public Water System Wells, Alaska Department of Environmental Conservation (ADEC)

**All other data:**  
 Alaska Statewide Digital Mapping Initiative (SDMI)

Drinking Water Protection Areas based on "Alaska Drinking Water Protection Program - Guidance Manual for Class B Public Water Systems" published by ADEC

URS Corporation does not guarantee the accuracy or validity of the data provided.



## **APPENDIX B**

### **Contaminant Source Inventory and Risk Ranking for Riverside Kwik Mart and Deli (Tables 1-4)**

**Table 1**

**Contaminant Source Inventory for  
Riverside Kwik Mart & Deli**

**PWSID 220104.001**

<b>Contaminant Source Type</b>	<b>Contaminant Source ID</b>	<b>CS ID tag</b>	<b>Zone</b>	<b>Map Number</b>	<b>Comments</b>
Coal mining (active or inactive?)	E01	E01	A	C	
Septic systems (serves one single-family home)	R02	R02	A	C	15 assumed septic systems
Tanks, heating oil, residential (above ground)	R08	R08	A	C	15 assumed heating oil tanks
Contaminated sites, DEC recognized, non-Superfund, non-RCRA	U04	U04-01	A	C	
Contaminated sites, DEC recognized, non-Superfund, non-RCRA	U04	U04-02	A	C	
Contaminated sites, DEC recognized, non-Superfund, non-RCRA	U04	U04-03	A	C	
Contaminated sites, DEC recognized, non-Superfund, non-RCRA	U04	U04-04	A	C	
Open Leaking Underground Fuel Storage Tank (LUST) Sites	U07	U07-01	A	C	
Open Leaking Underground Fuel Storage Tank (LUST) Sites	U07	U07-02	A	C	
Open Leaking Underground Fuel Storage Tank (LUST) Sites	U07	U07-03	A	C	
Open Leaking Underground Fuel Storage Tank (LUST) Sites	U07	U07-04	A	C	
Highways and roads, paved (cement or asphalt)	X20	X20	A	C	1 road
Highways and roads, dirt/gravel	X24	X24	A	C	3 gravel roads
Campgrounds and RV Parks	X35	X35-01	A	C	
Coal mining (active or inactive?)	E01	E01	B	C	
Septic systems (serves one single-family home)	R02	R02	B	C	70 assumed septic systems
Tanks, fuel, residential (above ground)	R07	R07-01	B	C	
Tanks, heating oil, residential (above ground)	R08	R08	B	C	70 assumed heating oil tanks
Highways and roads, paved (cement or asphalt)	X20	X20	B	C	2 roads
Highways and roads, dirt/gravel	X24	X24	B	C	6 gravel roads

Table 2

*Contaminant Source Inventory and Risk Ranking for  
Riverside Kwik Mart & Deli  
Sources of Bacteria and Viruses*

PWSID 220104.001

<i>Contaminant Source Type</i>	<i>Contaminant Source ID</i>	<i>CS ID tag</i>	<i>Zone</i>	<i>Risk Ranking for Analysis</i>	<i>Map Number</i>	<i>Comments</i>
Septic systems (serves one single-family home)	R02	R02	A	Low	C	15 assumed septic systems
Highways and roads, paved (cement or asphalt)	X20	X20	A	Low	C	1 road
Highways and roads, dirt/gravel	X24	X24	A	Low	C	3 gravel roads
Campgrounds and RV Parks	X35	X35-01	A	Low	C	
Septic systems (serves one single-family home)	R02	R02	B	Low	C	70 assumed septic systems
Highways and roads, paved (cement or asphalt)	X20	X20	B	Low	C	2 roads
Highways and roads, dirt/gravel	X24	X24	B	Low	C	6 gravel roads

Table 3

*Contaminant Source Inventory and Risk Ranking for  
Riverside Kwik Mart & Deli  
Sources of Nitrates/Nitrites*

PWSID 220104.001

<i>Contaminant Source Type</i>	<i>Contaminant Source ID</i>	<i>CS ID tag</i>	<i>Zone</i>	<i>Risk Ranking for Analysis</i>	<i>Map Number</i>	<i>Comments</i>
Septic systems (serves one single-family home)	R02	R02	A	Low	C	15 assumed septic systems
Highways and roads, paved (cement or asphalt)	X20	X20	A	Low	C	1 road
Highways and roads, dirt/gravel	X24	X24	A	Low	C	3 gravel roads
Campgrounds and RV Parks	X35	X35-01	A	Low	C	
Septic systems (serves one single-family home)	R02	R02	B	Low	C	70 assumed septic systems
Highways and roads, paved (cement or asphalt)	X20	X20	B	Low	C	2 roads
Highways and roads, dirt/gravel	X24	X24	B	Low	C	6 gravel roads

**Table 4**

*Contaminant Source Inventory and Risk Ranking for  
Riverside Kwik Mart & Deli  
Sources of Volatile Organic Chemicals*

*PWSID 220104.001*

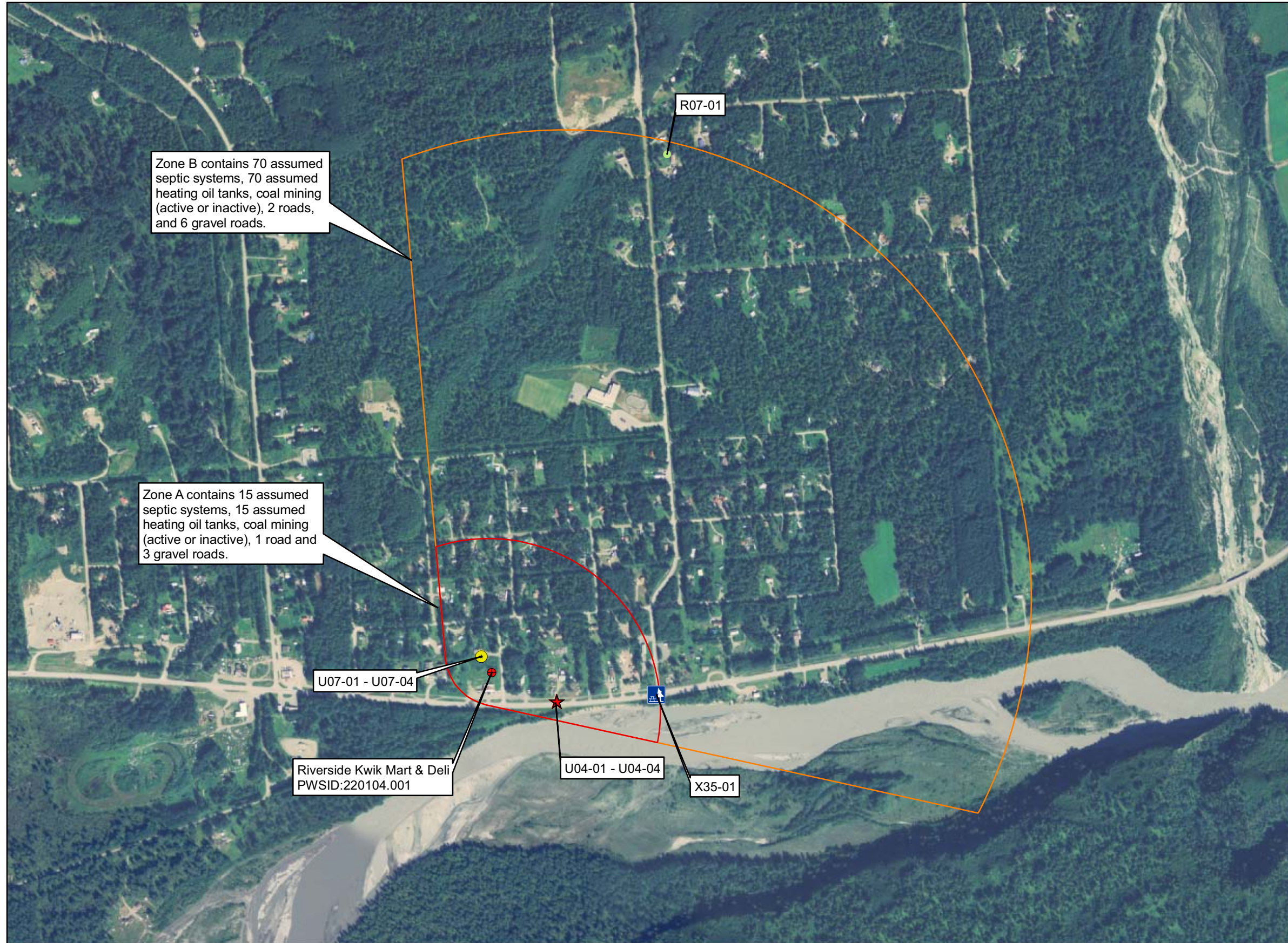
<i>Contaminant Source Type</i>	<i>Contaminant Source ID</i>	<i>CS ID tag</i>	<i>Zone</i>	<i>Risk Ranking for Analysis</i>	<i>Map Number</i>	<i>Comments</i>
Coal mining (active or inactive?)	E01	E01	A	High	C	
Septic systems (serves one single-family home)	R02	R02	A	Low	C	15 assumed septic systems
Tanks, heating oil, residential (above ground)	R08	R08	A	Medium	C	15 assumed heating oil tanks
Highways and roads, paved (cement or asphalt)	X20	X20	A	Low	C	1 road
Highways and roads, dirt/gravel	X24	X24	A	Low	C	3 gravel roads
Campgrounds and RV Parks	X35	X35-01	A	Low	C	
Coal mining (active or inactive?)	E01	E01	B	High	C	
Septic systems (serves one single-family home)	R02	R02	B	Low	C	70 assumed septic systems
Tanks, fuel, residential (above ground)	R07	R07-01	B	Medium	C	
Tanks, heating oil, residential (above ground)	R08	R08	B	Medium	C	70 assumed heating oil tanks
Highways and roads, paved (cement or asphalt)	X20	X20	B	Low	C	2 roads
Highways and roads, dirt/gravel	X24	X24	B	Low	C	6 gravel roads

## **APPENDIX C**

### **Riverside Kwik Mart and Deli Drinking Water Protection Area and Potential and Existing Contaminant Sources (Map C)**



**Public Water Well System for PWS #220104.001 Riverside Kwik Mart & Deli  
Showing Potential and Existing Sources of Contamination**



Zone B contains 70 assumed septic systems, 70 assumed heating oil tanks, coal mining (active or inactive), 2 roads, and 6 gravel roads.

Zone A contains 15 assumed septic systems, 15 assumed heating oil tanks, coal mining (active or inactive), 1 road and 3 gravel roads.

**Legend**

- Class B Public Water System Well
- Groundwater Protection Zones**
- Zone A Protection Area - Several Months Travel Time
- Zone B Protection Area - 2 Years Travel Time
- Existing or Potential Contaminant Sources**
- Tanks, fuel, residential (above ground) (R07)
- ★ Contaminated sites, DEC recognized, non-Superfund, non-RCRA (U04)
- Open Leaking Underground Fuel Storage Tank (LUST) Sites (U07)
- ⓘ Campgrounds and RV Parks (X35)

**Data Sources:**  
Contaminant Sources, Public Water System Wells, Alaska Department of Environmental Conservation (ADEC)

**All other data:**  
Alaska Statewide Digital Mapping Initiative (SDMI)

**Drinking Water Protection Areas based on "Alaska Drinking Water Protection Program - Guidance Manual for Class B Public Water Systems" published by ADEC**

**URS Corporation does not guarantee the accuracy or validity of the data provided.**

