



---

# Source Water Assessment

A Hydrogeologic Susceptibility and  
Vulnerability Assessment for the  
City of Shaktoolik

Winter Intake

PWSID # 340442.002

October 2004

Drinking Water Protection Program Report #1536

Alaska Department of Environmental Conservation

# Source Water Assessment for the City of Shaktoolik

## Winter Intake

PWSID# 340442.002

October 2004

Drinking Water Protection Program Report #1536

The Drinking Water Protection Program (DWPP) is producing Source Water Assessments in compliance with the Safe Drinking Water Act Amendments of 1996. Each assessment includes a delineation of the source water area, an inventory of potential and existing contaminant sources that may impact the water, a risk ranking for each of these contaminants, and an evaluation of the potential vulnerability of these drinking water sources.

These assessments are intended to provide public water systems owners/operators, communities, and local governments with the best available information that may be used to protect the quality of their drinking water. The assessments combine information obtained from various sources, including the U.S. Environmental Protection Agency, Alaska Department of Environmental Conservation (ADEC), public water system owners/operators, and other public information sources. The results of this assessment are subject to change if additional data becomes available. It is anticipated this assessment will be updated every five years to reflect any changes in the vulnerability and/or susceptibility of public drinking water source. If you have any additional information that may affect the results of this assessment, please contact the Program Coordinator of DWPP, (907) 269-7521.

## CONTENTS

	Page
SECTION	
Executive Summary	1
Drinking Water System and Area Overview	1
Shaktoolik (winter intake) Drinking Water Protection Area	1
Inventory of Potential and Existing Contaminant Sources	2
Ranking of Contaminant Risks	2
Vulnerability of the Drinking Water System	2
References	7

## TABLES

TABLE	1. Definition of Zones	2
	2. Susceptibility of the Water Source	3
	3. Contaminant Risks	3
	4. Overall Vulnerability	3

## APPENDICES

APPENDIX	A. Shaktoolik (winter intake) Drinking Water Protection Area (Map 1)	
	B. Contaminant Source Inventory and Risk Rankings (Tables 1 - 7)	
	C. Shaktoolik (winter intake) Drinking Water Protection Area and Potential and Existing Contaminant Sources (Map 2)	
	D. Vulnerability Analysis and Contaminant Risks (Charts 1 – 13)	

# Source Water Assessment for the City of Shaktoolik Water System – Winter Intake

## Drinking Water Protection Program Alaska Department of Environmental Conservation

### EXECUTIVE SUMMARY

The City of Shaktoolik water system is a Class A (community) water system that obtains water from two surface water intakes on the Tagoonmenik River. One intake, used in the summer, is located approximately 2-miles south of Shaktoolik. The second intake, used in the winter, is located approximately 200 yards north of the water treatment plant. Access to the intake areas is not restricted. The overall protection area for the winter intake is approximately 8.6 square miles in size and received a susceptibility rating of “**very high**”. *A rating of high to very high is typical for all systems with surface water intakes.* Potential and existing sources of the following contaminants were evaluated for the Source Water Assessment: bacteria and viruses, nitrates and/or nitrites, heavy metals, cyanide, and other inorganic chemicals, synthetic organic chemicals, volatile organic chemicals, and other organic chemicals. Residential areas, above ground fuel tanks, boat landings, gravel roads, a landing strip, and ATV activity were identified as potential sources of contaminants for the drinking water source. This evaluation included all available water sampling data submitted to ADEC by the system operator. The samples may have been collected from either raw water or post-treated water. Combining the susceptibility of the surface water source with the contaminant risks, this water system has received a vulnerability rating of “**medium**” for bacteria and viruses, nitrates/nitrites, and heavy metals; “**high**” for synthetic organic chemicals; and “**very high**” for volatile organic chemicals and other organic chemicals. This assessment can be used as a foundation for local voluntary protection efforts as well as a basis for the continuous efforts on the part of the City of Shaktoolik to protect public health.

### DRINKING WATER SYSTEM AND AREA OVERVIEW

Shaktoolik (Sec. 23, T013S, R013W, Kateel River Meridian) is located on the east shore of Norton Sound. It lies 125 miles east of Nome and 33 miles north of Unalakleet (Please see the inset of Map 1 in Appendix A for location). The current population of Shaktoolik is approximately 220 (ADCED, 2004). The water system is a Class A (community) water system that serves the residential population year-round and obtains water

from two surface water intakes on the Tagoonmenik River. One intake, used in the summer, is located approximately 2-miles south of Shaktoolik. The second intake, used in the winter, is located approximately 200 yards north of the water treatment plant (See Map 1 of Appendix A). The piped water and sewage system serves most of the homes.

Summer temperatures in Shaktoolik average 47 to 62; winter temperatures average -4 to 11. Extremes from -50 to 87 have been recorded. Average annual precipitation is 14 inches, including 43 inches of snowfall (ADCED, 2004).

The 2001 sanitary survey indicates that the summer source is in use from mid-June through the end of September and has an average daily production of 140,000 gallons. The winter source is in use approximately two times per week from November to April and has an average daily production of 130,000. The system has the capacity to store approximately 790,000 gallons of water.

### SHAKTOOLIK (WINTER INTAKE) DRINKING WATER PROTECTION AREA

Identifying the pathways most likely for surface contamination to reach water intake areas is the first step in determining the water system’s risk. These are initially determined by looking at the drainage area contributing overland water flow to a surface water source intake. The entire drainage area is also known as the “drinking water protection area”. Please refer to pages 10-11 of the “Guidance Manual for Class A Public Water Systems” for additional information.

The protection area established for surface water sources by the ADEC is usually separated into three zones, limited by the watershed boundary. These zones correspond to the overland-flow distance that water travels to get to the source. The ADEC Drinking Water Protection Program’s Technical Advisory Committee developed guidelines for derivation of these zones in 1998. The following is a summary of the three protection area zones:

**Table 1. Definition of Zones**

<b>Zone</b>	<b>Definition</b>
A	Areas within 1000-ft of lakes or streams
B	Areas within 1-mile of lakes or streams
C	The watershed boundary

The protection area for the winter water intake includes each of these Zones (See Map 1 of Appendix A).

### **INVENTORY OF POTENTIAL AND EXISTING CONTAMINANT SOURCES**

The Drinking Water Protection Program has completed an inventory of potential and existing sources of contamination within the Shaktoolik (winter intake) protection area. This inventory was completed through a search of agency records and other publicly available information. There is a wide array of potential contamination sources to surface water. These contaminants are found within agricultural, residential, commercial, and industrial areas, but *can also occur within areas that have little or no development.*

For Class A public water system assessments, six categories of drinking water contaminants were inventoried. They include:

- Bacteria and viruses;
- Nitrates and/or nitrites;
- Volatile organic chemicals;
- Heavy metals, cyanide, and other inorganic chemicals;
- Synthetic Organic Chemicals; and
- Other Organic Chemicals.

Sources identified in the protection area are displayed on Map 2 of Appendix C and summarized in Table 1 of Appendix B.

### **RANKING OF CONTAMINANT RISKS**

Once potential and existing sources of contamination have been identified, they are assigned a ranking according to what category and level of risk they represent. Ranking of contaminant risks for “potential” or “existing” sources of contamination is a function of the toxicity and the volume of specific contaminants associated with that source. Rankings include:

- Low;
- Medium;
- High; and
- Very High.

The time-of-travel for contaminants within the water is dependent on the physical and chemical characteristics of each contaminant. Bacteria and Viruses are only inventoried in Zone A because of their short life span. Only “Very High” and “High” rankings are inventoried within Zones B and C due to the probability of contaminant dilution by the time the contaminants reach the water intake.

The remaining tables in Appendix B (if necessary) contain the ranking of potential and existing sources of contamination with respect to bacteria and viruses, nitrates and/or nitrites, volatile organic chemicals, heavy metals, cyanide, and other inorganic chemicals, synthetic organic chemicals, and other organic chemicals.

### **VULNERABILITY OF THE DRINKING WATER SYSTEM**

Vulnerability of a drinking water source to contamination is a combination of two factors:

- Surface Water Susceptibility; and
- Contaminant risks.

Appendix D contains 13 charts, which together form the ‘Vulnerability Analysis’ for the public drinking water Source Water Assessment. Chart 1 analyzes the ‘Susceptibility of the Surface Water Source’ to contamination by looking at the climate, terrain, and intake location. Chart 2 analyzes ‘Contaminant Risks’ for the drinking water source with respect to bacteria and viruses. The ‘Contaminant Risks’ portion of the analysis considers potential sources of contaminants as well as a review of contamination that has or may have occurred, but has not arrived or been detected at the intake area. Chart 3 contains the ‘Vulnerability Analysis for Bacteria and Viruses’, which is a composite score of the Vulnerability Analysis and the overall Susceptibility. Charts 4 through 13 repeat the Contaminant Risks and Vulnerability Analyses for nitrates and nitrites, volatile organic chemicals, heavy metals, cyanide, and other inorganic chemicals, synthetic organic chemicals, and other organic chemicals, respectively.

A score for the Surface Water Susceptibility of the source is reached by considering the properties of the water intake and the surrounding area. The derivation of this information is presented below and the data for this source is shown in Chart 1 of Appendix D.

Susceptibility of the Surface Water Source – always considered to be “high” (30 points)

+

Adequate Construction of the Intake (0 – 5 Points)

+

Runoff Potential Within Zone B (0 – 5 Points)

+

Dilution Capacity of the Surface Water (0 – 10 Points)

=

Natural Susceptibility  
(0 – 50 Points)

A ranking is assigned for the Surface Water Susceptibility according to the point score:

Surface Water Source Susceptibility Ratings	
40 to 50 pts	Very High
30 to < 40 pts	High

**Table 2. Susceptibility of the Water Source**

	Score	Rating
Minimum Allowable Susceptibility	30	
Intake Construction Adequate	0	
Runoff Potential	0	
Dilution Capacity	10	
Overall Susceptibility	40	Very High

For contaminants, risks to a drinking water source depend on the type, number or density, and distribution of the contaminant sources. The Contaminant Risk score has been derived from an examination of existing, and historical contamination sources that have been detected in the protection area through routine sampling. It also evaluates potential sources of contamination. Flow charts are used to assign a point score, and ratings are assigned in the same way as the susceptibility:

Contaminant Risk Ratings	
40 to 50 pts	Very High
30 to < 40 pts	High
20 to < 30 pts	Medium
< 20 pts	Low

Table 3 summarizes the Contaminant Risks for each category of drinking water contaminants.

**Table 3. Contaminant Risks**

Category	Score	Rating
Bacteria and Viruses	12	Low
Nitrates and/or Nitrites	15	Low
Volatile Organic Chemicals	50	Very High
Heavy Metals, Cyanide, and Other Inorganic Chemicals	12	Low
Synthetic Organic Chemicals	25	Medium
Other Organic Chemicals	40	Very High

Finally, an overall vulnerability score is assigned for each contaminant type by combining each of the contaminant risk scores with the susceptibility score:

Susceptibility of the Surface Water Source

(0 – 50 points)

+

Contaminant Risks (0 – 50 points)

=

Vulnerability of the  
Drinking Water Source to Contamination (0 – 100).

Again, rankings are assigned according to a point score:

Overall Vulnerability Ratings	
80 to 100 pts	Very High
60 to < 80 pts	High
40 to < 60 pts	Medium
< 40 pts	Low

Table 4 contains the overall vulnerability scores and ratings for each of the six categories of drinking water contaminants. Note: scores are rounded off to the nearest five.

**Table 4. Overall Vulnerability**

Category	Score	Rating
Bacteria and Viruses	50	Medium
Nitrates and Nitrites	55	Medium
Volatile Organic Chemicals	90	Very High
Heavy Metals, Cyanide, and Other Inorganic Chemicals	50	Medium
Synthetic Organic Chemicals	65	High
Other Organic Chemicals	80	Very High

## **Bacteria and Viruses**

The contaminant risk for bacteria and viruses is “low”. Typically, coliform detection in raw water samples collected from surface water sources is normal. (See Chart 2 – Contaminant Risks for Bacteria and Viruses in Appendix D).

Coliforms (a bacteria) are found naturally in the environment and although they aren’t necessarily a health threat, they are an indicator of other potentially harmful bacteria in the water, more specifically, fecal coliforms and E. coli which only come from human and animal fecal waste. Harmful bacteria can cause diarrhea, cramps, nausea, headaches, or other symptoms (EPA, 2003). Positive samples increase the overall vulnerability of the drinking water source, indicating that the source is susceptible to bacteria and virus contamination.

Positive bacteria counts have not been detected in recent sampling.

After combining the contaminant risk for bacteria and viruses with the natural susceptibility of the source, the overall vulnerability of the source to bacteria and virus contamination is “medium”.

## **Nitrates and Nitrites**

The contaminant risk for nitrates and nitrites is “low” (See Chart 4 - Contaminant Risks for Nitrates and/or Nitrites in Appendix D). Nitrates are very mobile, moving at approximately the same rate as water.

Sampling history for the water source indicates that nitrates have been detected at levels below the MCL in samples collected in 2001 and 2002. The Maximum Contaminant Level (MCL) for nitrates is 10 milligrams per liter (mg/L). The MCL is the maximum level of contaminant that is allowed to exist in drinking water and still be consumed by humans without harmful health effects (EPA, 2003).

Possible sources of nitrates/nitrites could be from residential areas, airfields, and human/animal activity along roads, ATV trails or snowmachine trails located within the protection area.

After combining the contaminant risk for nitrates and nitrites with the natural susceptibility of the source, the overall vulnerability of the source to contamination is “medium”.

## **Volatile Organic Chemicals**

The contaminant risk for volatile organic chemicals is “very high” (See Chart 6 – Contaminant Risks for Volatile Organic Chemicals in Appendix D).

Trihalomethanes were detected at levels above the MCL during sampling in 2001, although these chemicals typically originate during the process of water treatment and not from the source waters. The MCL for chloroform is 0.2 milligrams per liter (mg/L) and the MCL for total trihalomethanes is 0.1 mg/L.

Possible sources of volatile organic chemicals could be from residential areas, above ground fuel tanks, boat landings, airfields, and human/animal activity along roads, ATV trails or snowmachine trails located within the protection area.

After combining the contaminant risk for volatile organic chemicals with the natural susceptibility of the source, the overall vulnerability of the source to contamination is “very high”.

## **Heavy Metals, Cyanide, and Other Inorganic Chemicals**

The contaminant risk for heavy metals is “low”. Copper and lead were detected in samples collected during 2000 & 2002 at levels below the MCL (See Chart 8 – Contaminant Risks for Heavy Metals, Cyanide, and Other Inorganic Chemicals in Appendix D). The MCL for copper is 1.3 mg/l. and the MCL for lead is 0.015 mg/l.

The most common source of these chemicals is the infrastructure of the distribution system following the treatment process and not from the source waters. Additional sources of heavy metals could be from residential areas, boat landings, airfields, or activity along roads, ATV or snowmachine trails located within the protection area.

After combining the contaminant risk for heavy metals with the natural susceptibility of the source, the overall vulnerability of the well to contamination is “medium”.

## **Synthetic Organic Chemicals**

The contaminant risk for synthetic organic chemicals is “medium”.

Review of the historical sampling data indicates that test results for ethylene dibromide in 2002 were negative.

After combining the contaminant risk with the natural susceptibility of the source, the overall vulnerability to synthetic organic chemicals of the source is “high” (See Chart 11 – Contaminant Risks for Synthetic Organic Chemicals in Appendix D).

### **Other Organic Chemicals**

The contaminant risk for other organic chemicals is “very high”.

Review of the historical sampling data indicates that no other organic chemicals have been sampled recently.

A possible source of other organic chemicals could be from residential areas, boat landings, roads, or airfields located within the protection area.

After combining the contaminant risk with the natural susceptibility of the source, the overall vulnerability to other organic chemicals of the source is “very high” (See Chart 13 – Contaminant Risks for Other Organic Chemicals in Appendix D).

### **Using the Source Water Assessment**

This assessment of contaminant risks can be used as a foundation for local voluntary protection efforts as well as a basis for the continuous efforts on the part of Shaktoolik to protect public health. It is anticipated that Source Water Assessments will be updated every five years to reflect any changes in the vulnerability and/or susceptibility of the drinking water source.





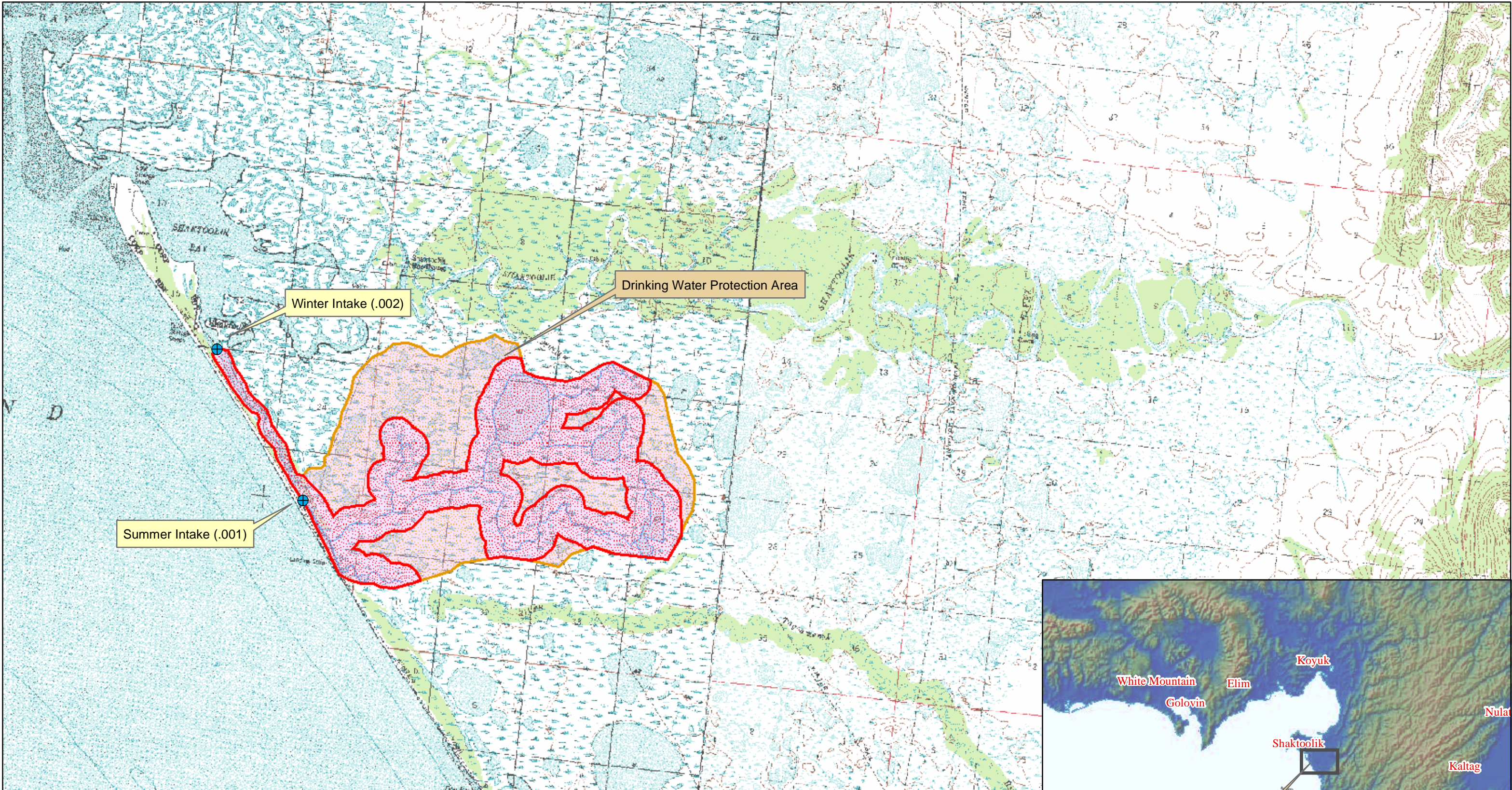
## **REFERENCES**

Alaska Department of Community and Economic Development (ADCED), 2004 [WWW document]. URL [http://www.dced.state.ak.us/cbd/commdb/CF\\_COMDB.htm](http://www.dced.state.ak.us/cbd/commdb/CF_COMDB.htm)

United States Environmental Protection Agency (EPA), 2004 [WWW document]. URL <http://www.epa.gov/safewater/mcl.html>.

## **APPENDIX A**

### **Shaktoolik (winter intake) Drinking Water Protection Area Location Map (Map 1)**



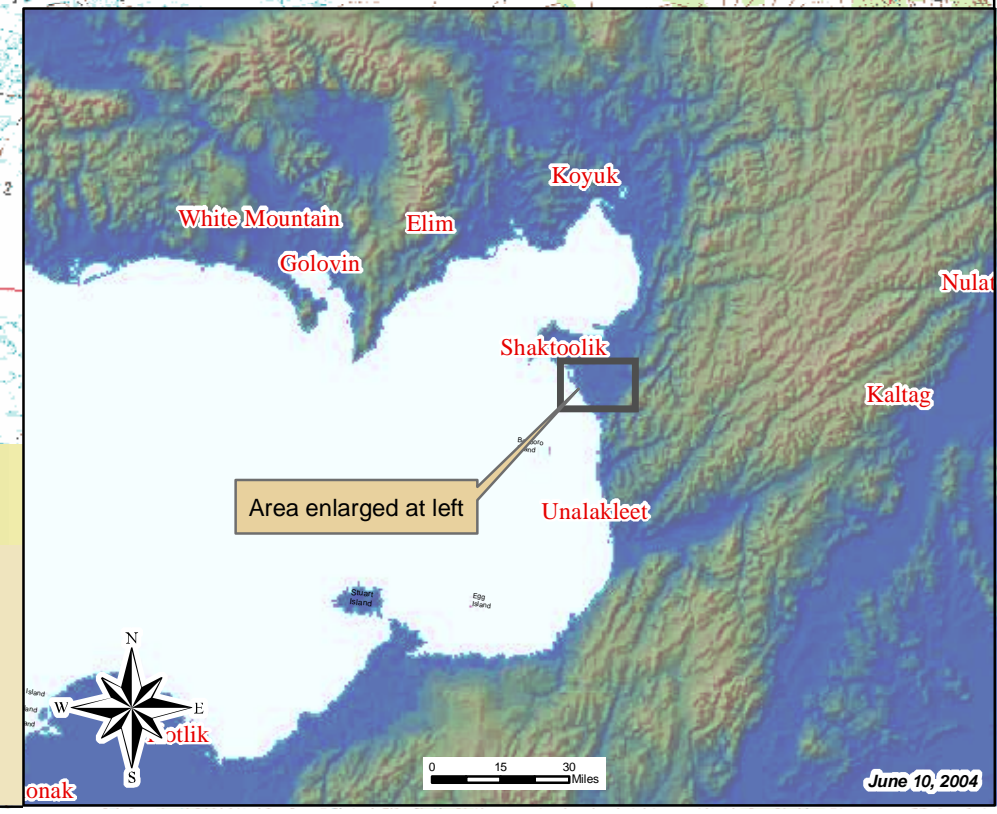
**Map 1: City of Shaktolik Drinking Water Protection Area**

**PWSID: 340442.001 & .002**



0 0.5 1 2 3 Miles  
 1:63,360  
**Data Sources:**  
*Protection zones were delineated based upon streams & rivers noted on USGS 1:63,000 mapping.*  
**Background image**  
 - USGS 1:63,000 mapping

- Legend**
- City of Shaktolik - Water Intake
  - Zone A Protection Area
  - Zone B Protection Area
  - Zone C Protection Area
  - Stream



## **APPENDIX B**

### **Contaminant Source Inventory and Risk Rankings (Tables 1 - 7)**

**Table 1**

**Contaminant Source Inventory for  
City of Shaktoolik - Winter**

**PWSID 340442.002**

<b>Contaminant Source Type</b>	<b>Contaminant Source ID</b>	<b>CS ID tag</b>	<b>Zone</b>	<b>Map Number</b>	<b>Comments</b>
Residential Areas	R01	R01-1	A	2	From Community Profile Mapping
Septic systems (serves one single-family home)	R02	R02 1-16	A	2	From Community Profile Mapping
Tanks, fuel, residential (above ground)	R07	R07 1-16	A	2	From Community Profile Mapping
Airfield	X14	X14-1	A	2	From Community Profile Mapping
Boat yards and marinas	X15	X15-1	A	2	From Community Profile Mapping
Highways and roads, dirt/gravel	X24	X24-1	A	2	From Community Profile Mapping
ATV / Dogsled trail	X33	X33-1	A	2	From Community Profile Mapping

**Table 2**

*Contaminant Source Inventory and Risk Ranking for  
City of Shaktoolik - Winter  
Sources of Bacteria and Viruses*

**PWSID 340442.002**

<i>Contaminant Source Type</i>	<i>Contaminant Source ID</i>	<i>CS ID tag</i>	<i>Zone</i>	<i>Risk Ranking for Analysis</i>	<i>Map Number</i>	<i>Comments</i>
Residential Areas	R01	R01-1	A	Low	2	From Community Profile Mapping
Septic systems (serves one single-family home)	R02	R02 1-16	A	Low	2	From Community Profile Mapping
Highways and roads, dirt/gravel	X24	X24-1	A	Low	2	From Community Profile Mapping
ATV / Dogsled trail	X33	X33-1	A	Low	2	From Community Profile Mapping

**Table 3**

*Contaminant Source Inventory and Risk Ranking for  
City of Shaktoolik - Winter  
Sources of Nitrates/Nitrites*

**PWSID 340442.002**

<i>Contaminant Source Type</i>	<i>Contaminant Source ID</i>	<i>CS ID tag</i>	<i>Zone</i>	<i>Risk Ranking for Analysis</i>	<i>Map Number</i>	<i>Comments</i>
Residential Areas	R01	R01-1	A	Low	2	From Community Profile Mapping
Septic systems (serves one single-family home)	R02	R02 1-16	A	Low	2	From Community Profile Mapping
Airfield	X14	X14-1	A	Low	2	From Community Profile Mapping
Highways and roads, dirt/gravel	X24	X24-1	A	Low	2	From Community Profile Mapping
ATV / Dogsled trail	X33	X33-1	A	Low	2	From Community Profile Mapping



Table 4

*Contaminant Source Inventory and Risk Ranking for  
City of Shaktoolik - Winter  
Sources of Volatile Organic Chemicals*

PWSID 340442.002

<i>Contaminant Source Type</i>	<i>Contaminant Source ID</i>	<i>CS ID tag</i>	<i>Zone</i>	<i>Risk Ranking for Analysis</i>	<i>Map Number</i>	<i>Comments</i>
Residential Areas	R01	R01-1	A	Low	2	From Community Profile Mapping
Septic systems (serves one single-family home)	R02	R02 1-16	A	Low	2	From Community Profile Mapping
Tanks, fuel, residential (above ground)	R07	R07 1-16	A	Low	2	From Community Profile Mapping
Airfield	X14	X14-1	A	Medium	2	From Community Profile Mapping
Boat yards and marinas	X15	X15-1	A	Medium	2	From Community Profile Mapping
Highways and roads, dirt/gravel	X24	X24-1	A	Low	2	From Community Profile Mapping
ATV / Dogsled trail	X33	X33-1	A	Low	2	From Community Profile Mapping

Table 5

*Contaminant Source Inventory and Risk Ranking for  
City of Shaktoolik - Winter  
Sources of Heavy Metals, Cyanide and Other Inorganic Chemicals*

PWSID 340442.002

<i>Contaminant Source Type</i>	<i>Contaminant Source ID</i>	<i>CS ID tag</i>	<i>Zone</i>	<i>Risk Ranking for Analysis</i>	<i>Map Number</i>	<i>Comments</i>
Residential Areas	R01	R01-1	A	Low	2	From Community Profile Mapping
Septic systems (serves one single-family home)	R02	R02 1-16	A	Low	2	From Community Profile Mapping
Airfield	X14	X14-1	A	Low	2	From Community Profile Mapping
Boat yards and marinas	X15	X15-1	A	Low	2	From Community Profile Mapping
Highways and roads, dirt/gravel	X24	X24-1	A	Low	2	From Community Profile Mapping
ATV / Dogsled trail	X33	X33-1	A	Low	2	From Community Profile Mapping

**Table 6**

*Contaminant Source Inventory and Risk Ranking for  
City of Shaktoolik - Winter  
Sources of Synthetic Organic Chemicals*

**PWSID 340442.002**

<i>Contaminant Source Type</i>	<i>Contaminant Source ID</i>	<i>CS ID tag</i>	<i>Zone</i>	<i>Risk Ranking for Analysis</i>	<i>Map Number</i>	<i>Comments</i>
Residential Areas	R01	R01-1	A	Low	2	From Community Profile Mapping
Septic systems (serves one single-family home)	R02	R02 1-16	A	Low	2	From Community Profile Mapping
Airfield	X14	X14-1	A	Medium	2	From Community Profile Mapping

**Table 7**

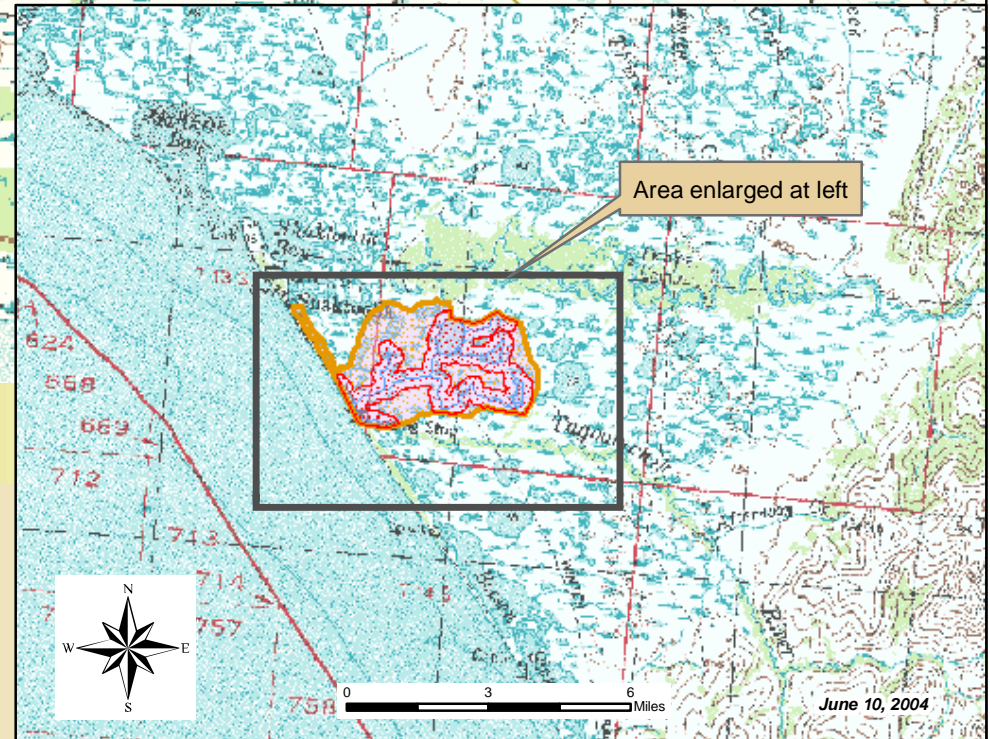
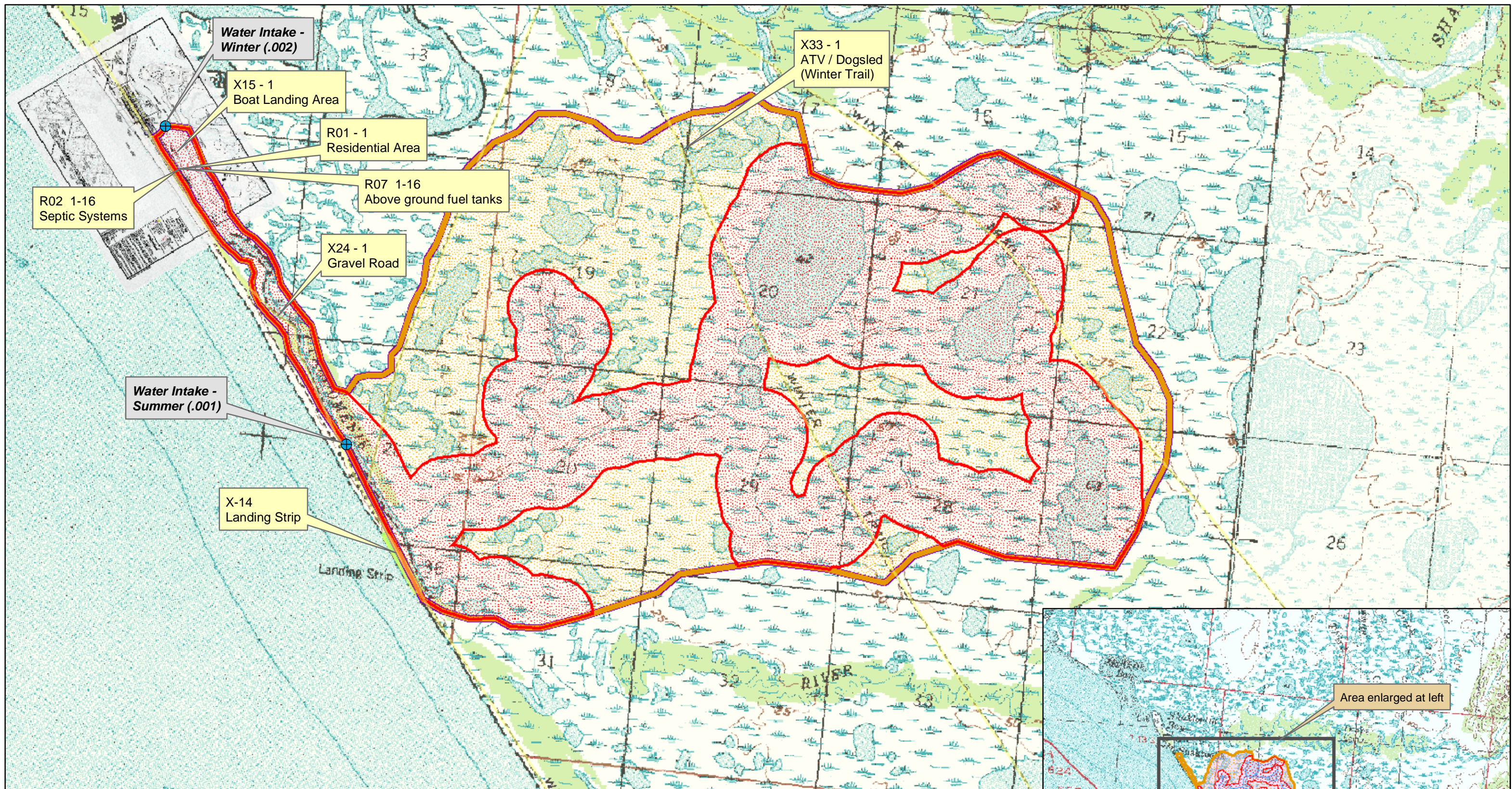
*Contaminant Source Inventory and Risk Ranking for  
City of Shaktoolik - Winter  
Sources of Other Organic Chemicals*

**PWSID 340442.002**

<i>Contaminant Source Type</i>	<i>Contaminant Source ID</i>	<i>CS ID tag</i>	<i>Zone</i>	<i>Risk Ranking for Analysis</i>	<i>Map Number</i>	<i>Comments</i>
Residential Areas	R01	R01-1	A	Low	2	From Community Profile Mapping
Septic systems (serves one single-family home)	R02	R02 1-16	A	Low	2	From Community Profile Mapping
Airfield	X14	X14-1	A	Medium	2	From Community Profile Mapping
Boat yards and marinas	X15	X15-1	A	High	2	From Community Profile Mapping
Highways and roads, dirt/gravel	X24	X24-1	A	Low	2	From Community Profile Mapping

## **APPENDIX C**

### **Shaktoolik (winter intake) Drinking Water Protection Area and Potential and Existing Contaminant Sources (Map 2)**



**Map 2: Potential and Existing Contaminant Sources**

**PWSID: 340442.002**



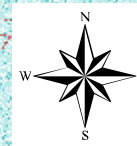
**Data Sources:**  
 Background image - USGS 1:63,000 mapping  
 1:30,000

Protection zones were delineated based upon streams noted on USGS 1:63,000 mapping.

For this PWS, Zone C (the entire watershed) covers the same area as Zone B (areas within 1-mile of the stream).

**Legend**

- City of Shaktoolik - Water Intake
- Zone A Protection Area
- Zone B Protection Area
- Zone C Protection Area



0 3 6 Miles

June 10, 2004

## **APPENDIX D**

### **Vulnerability Analysis and Contaminant Risks (Charts 1-13)**

**Chart 1. Susceptibility of the Surface Water Source - City of Shaktoolik (Winter Intake)**

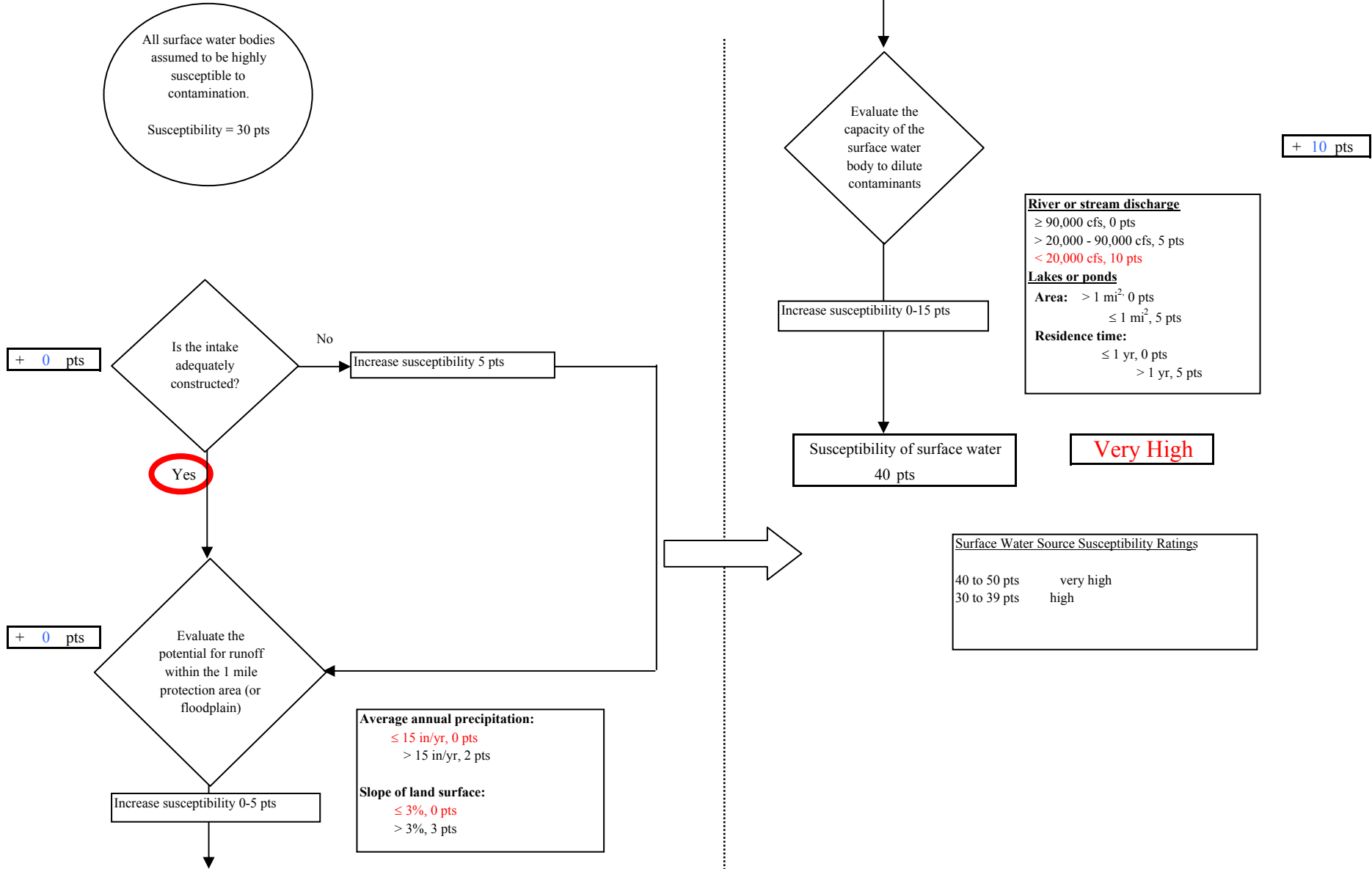
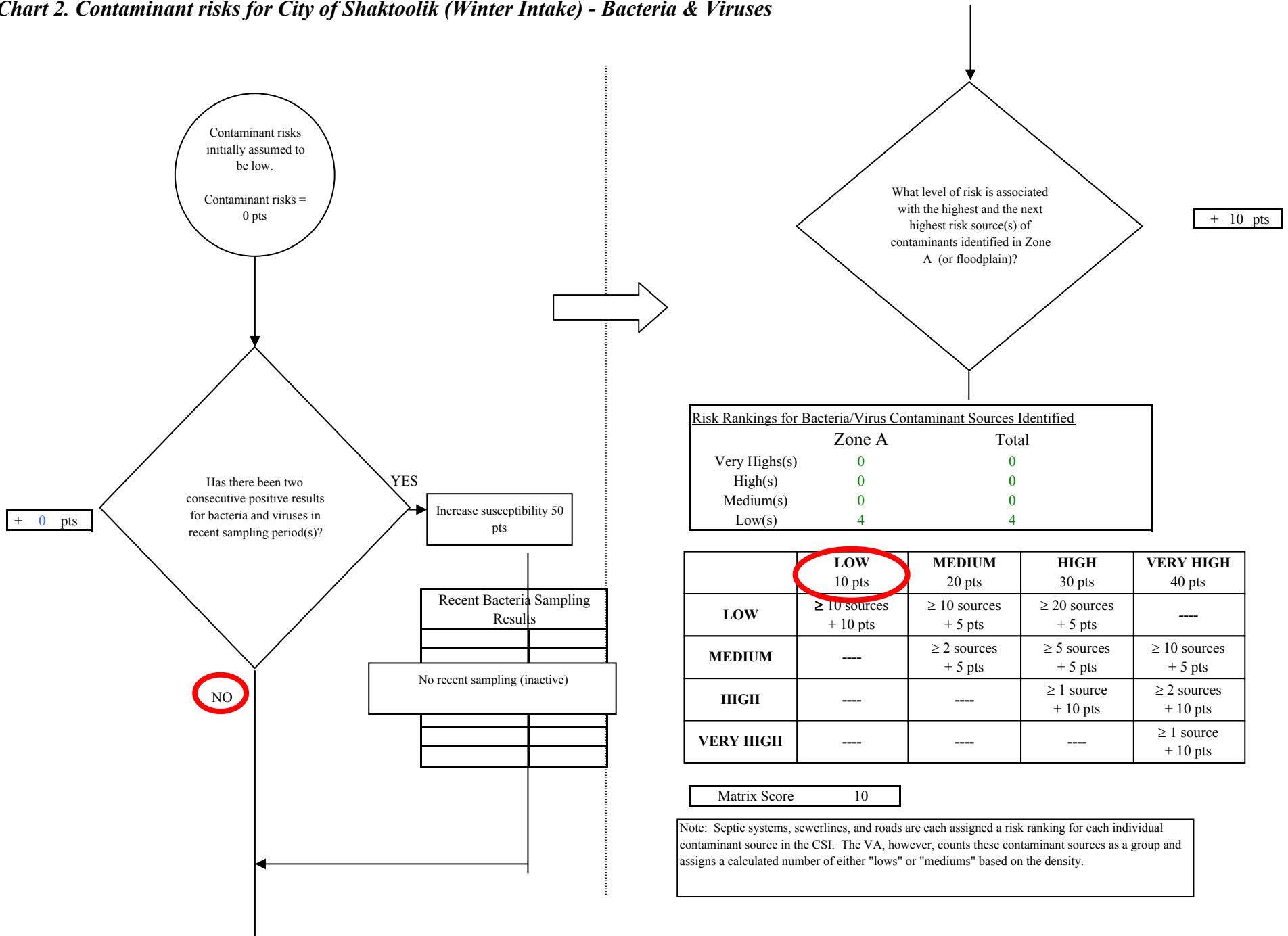
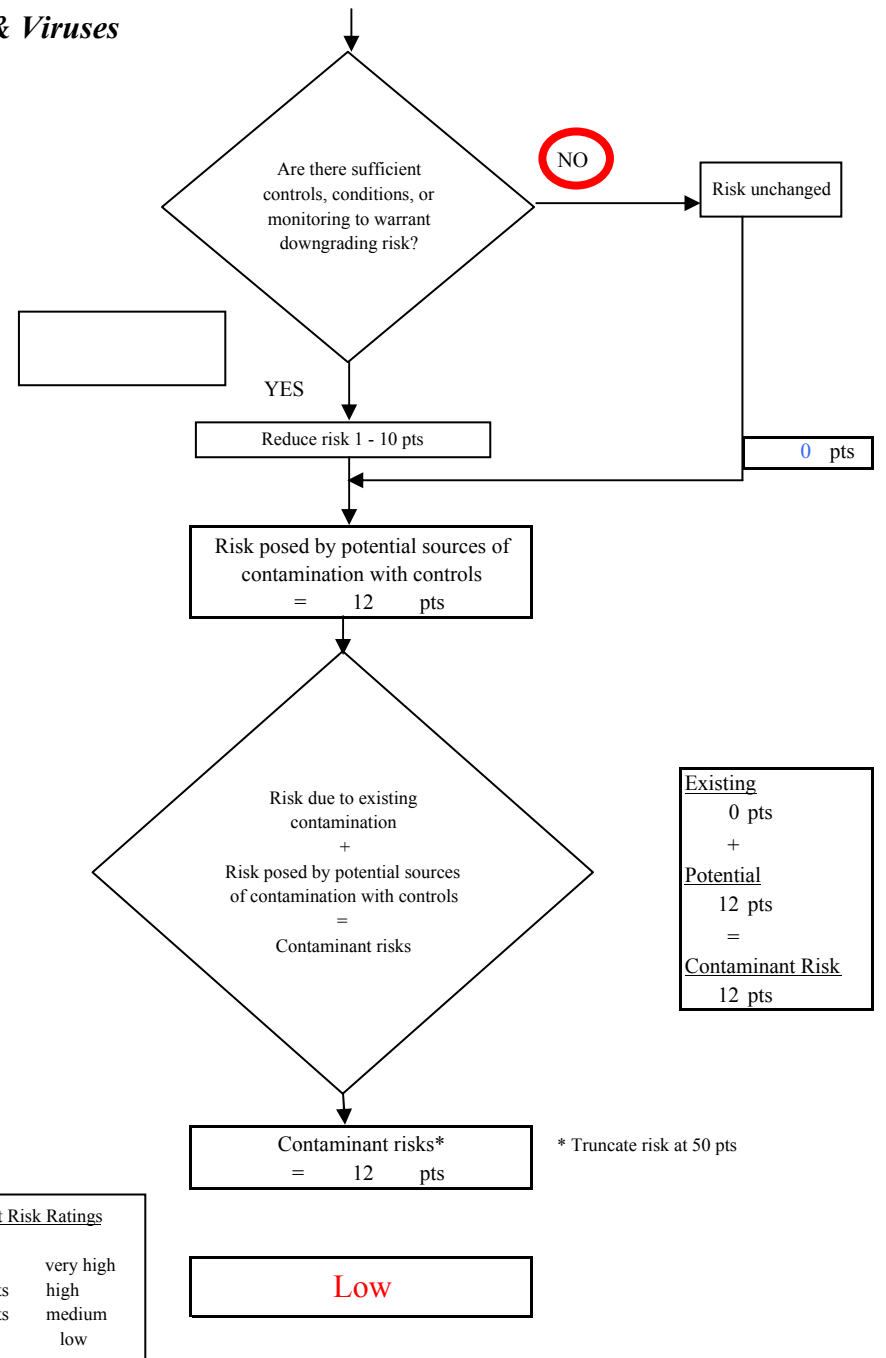
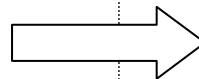
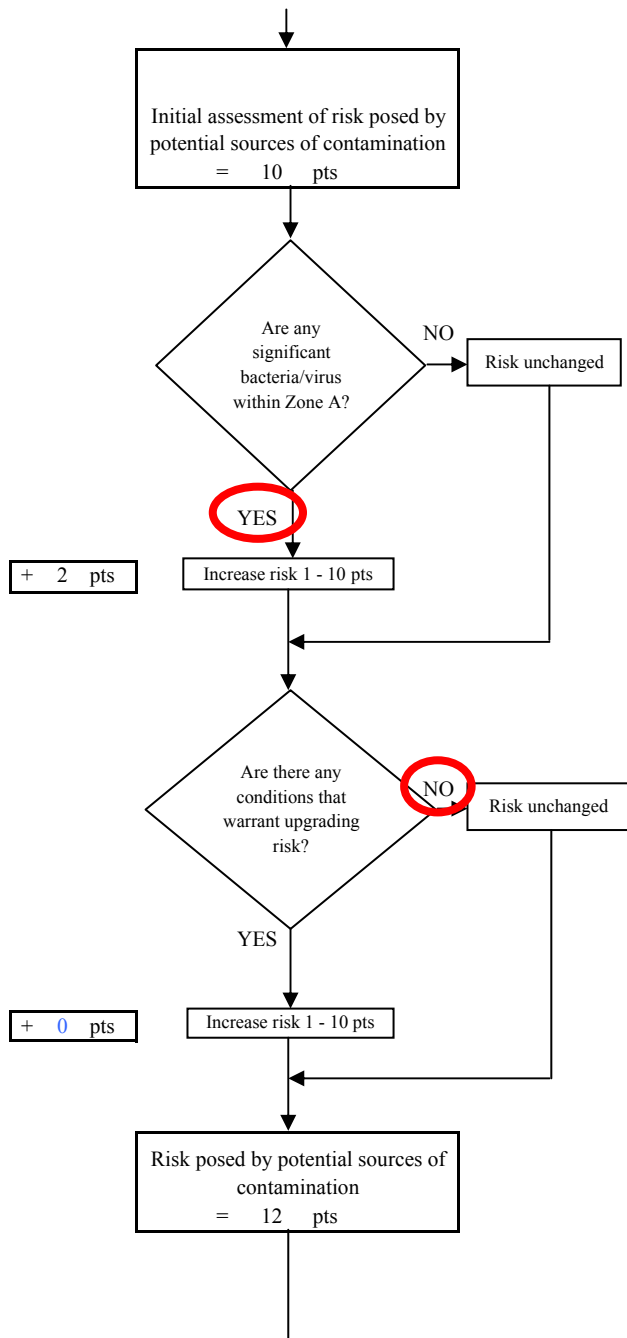




Chart 2. Contaminant risks for City of Shaktoolik (Winter Intake) - Bacteria & Viruses



**Chart 2. Contaminant risks for City of Shaktoolik (Winter Intake) - Bacteria & Viruses**



**Chart 3. Vulnerability analysis for City of Shaktoolik (Winter Intake) - Bacteria & Viruses**

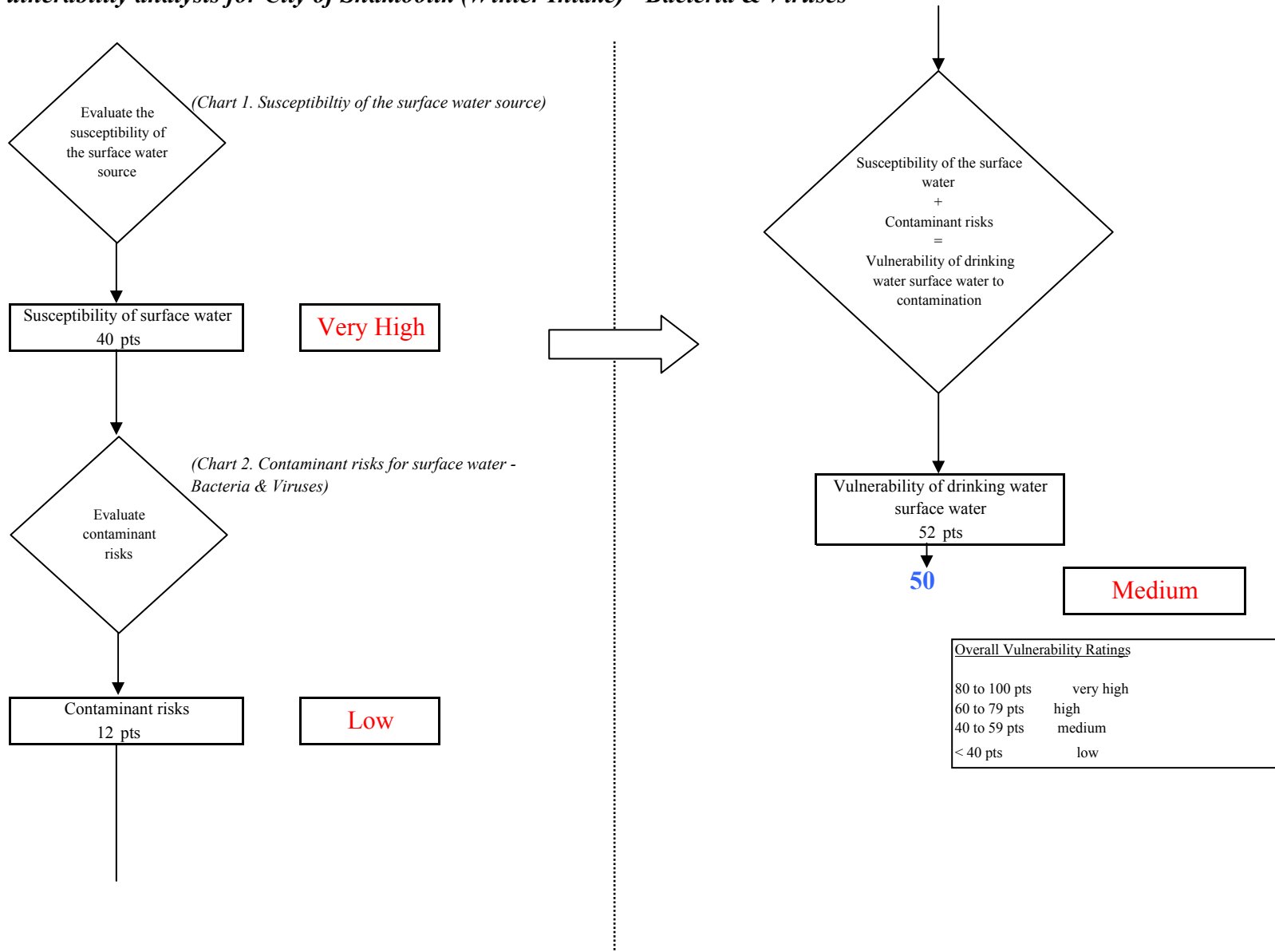


Chart 4. Contaminant risks for City of Shaktoolik (Winter Intake) - Nitrates and Nitrites

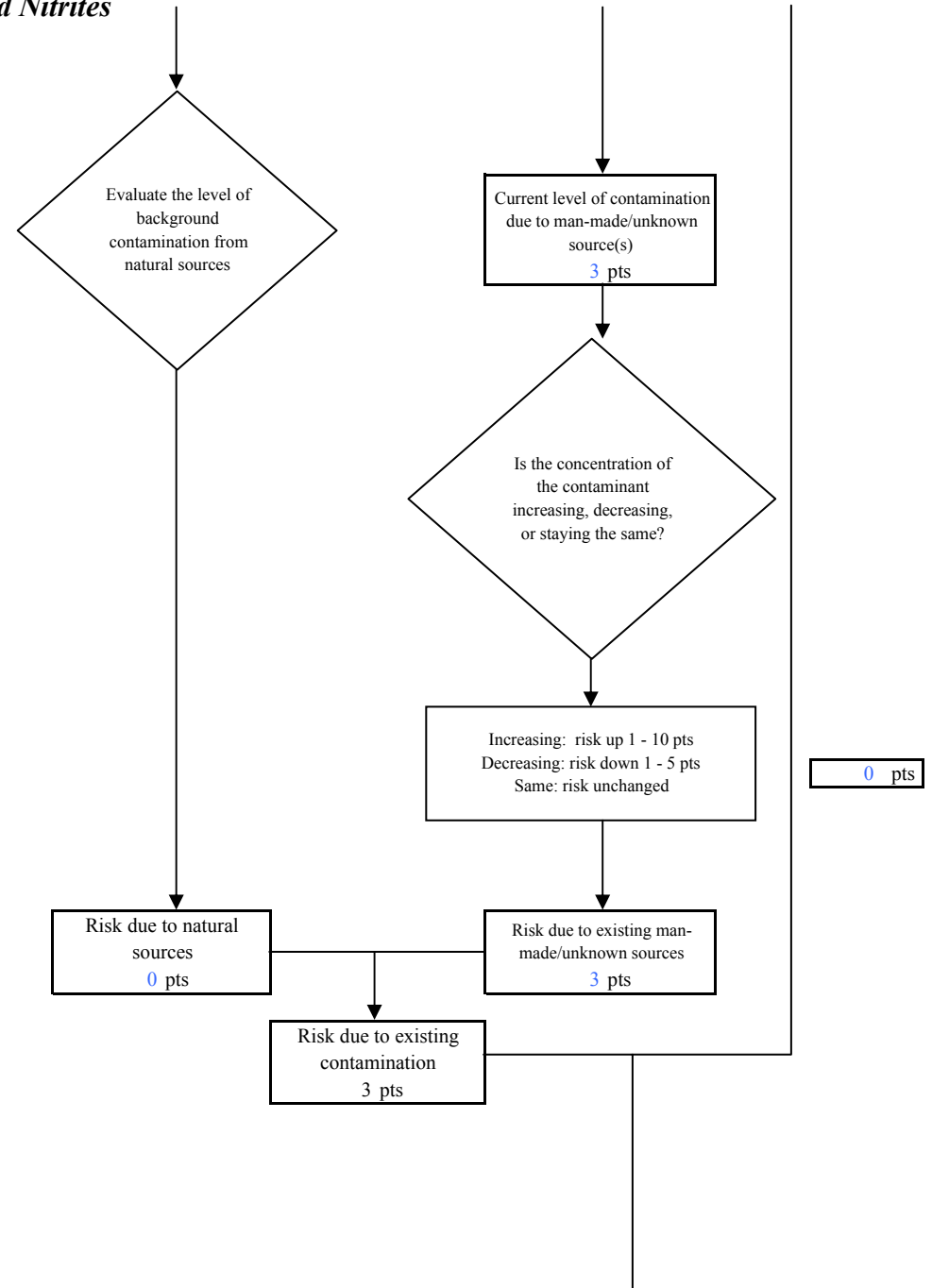
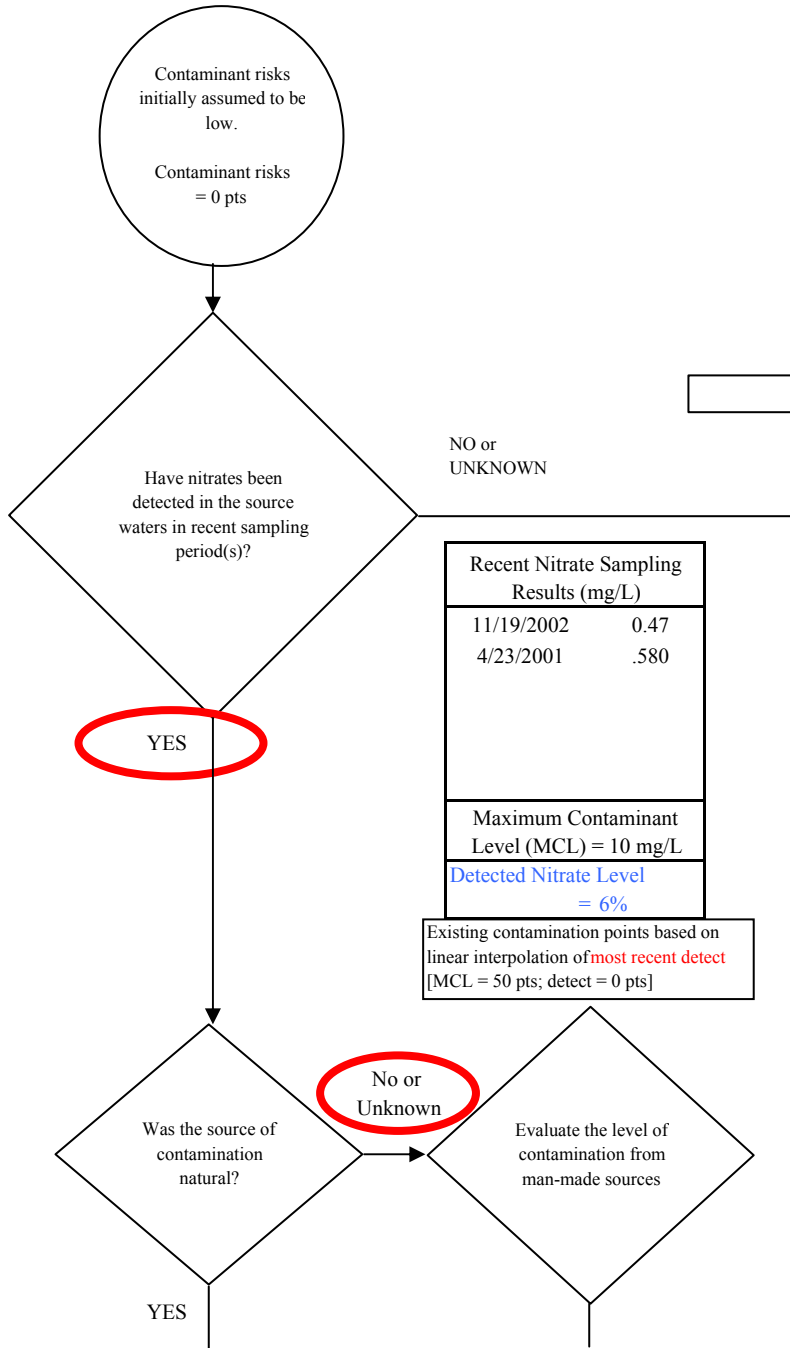
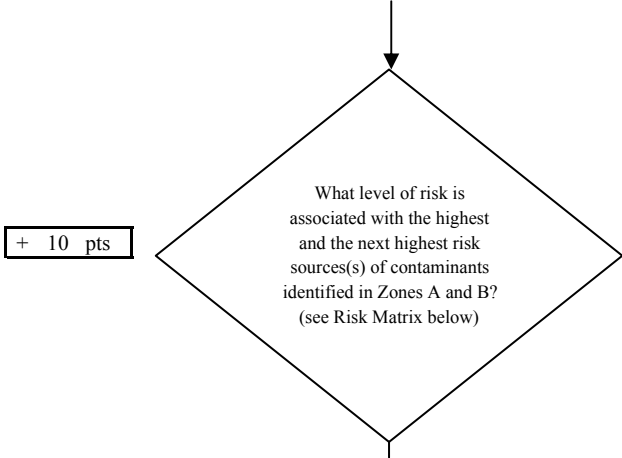


Chart 4. Contaminant risks for City of Shaktoolik (Winter Intake) - Nitrates and Nitrites

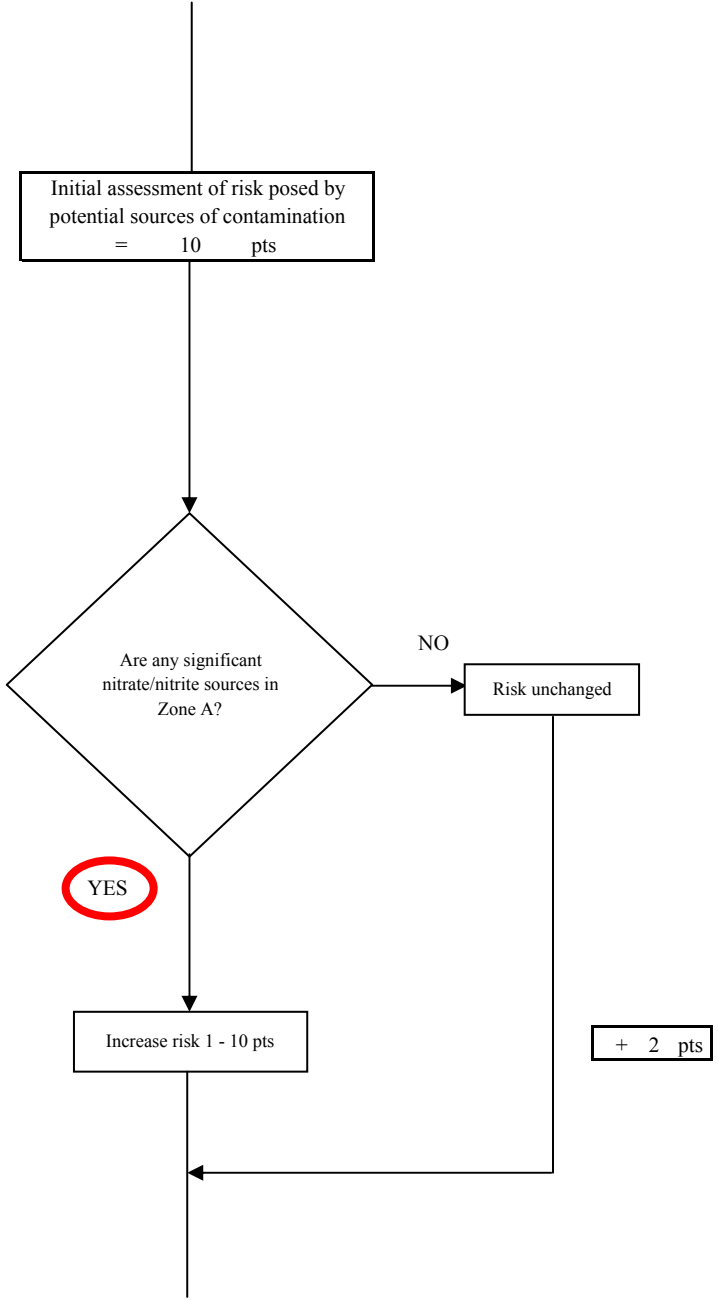
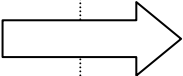


Risk Levels for Nitrate/Nitrite Sources identified in Zones A and B			
	Zone A	Zone B	Total
Very Highs(s)	0	0	0
High(s)	0	0	0
Medium(s)	0	0	0
Low(s)	5	5	5

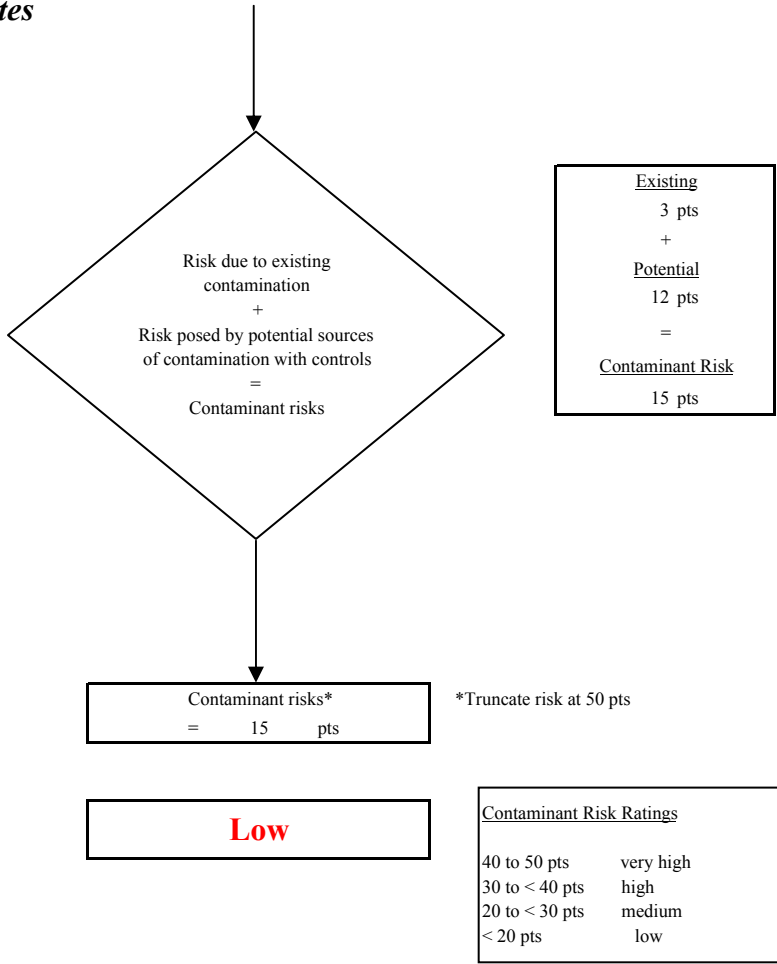
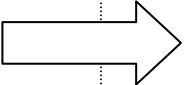
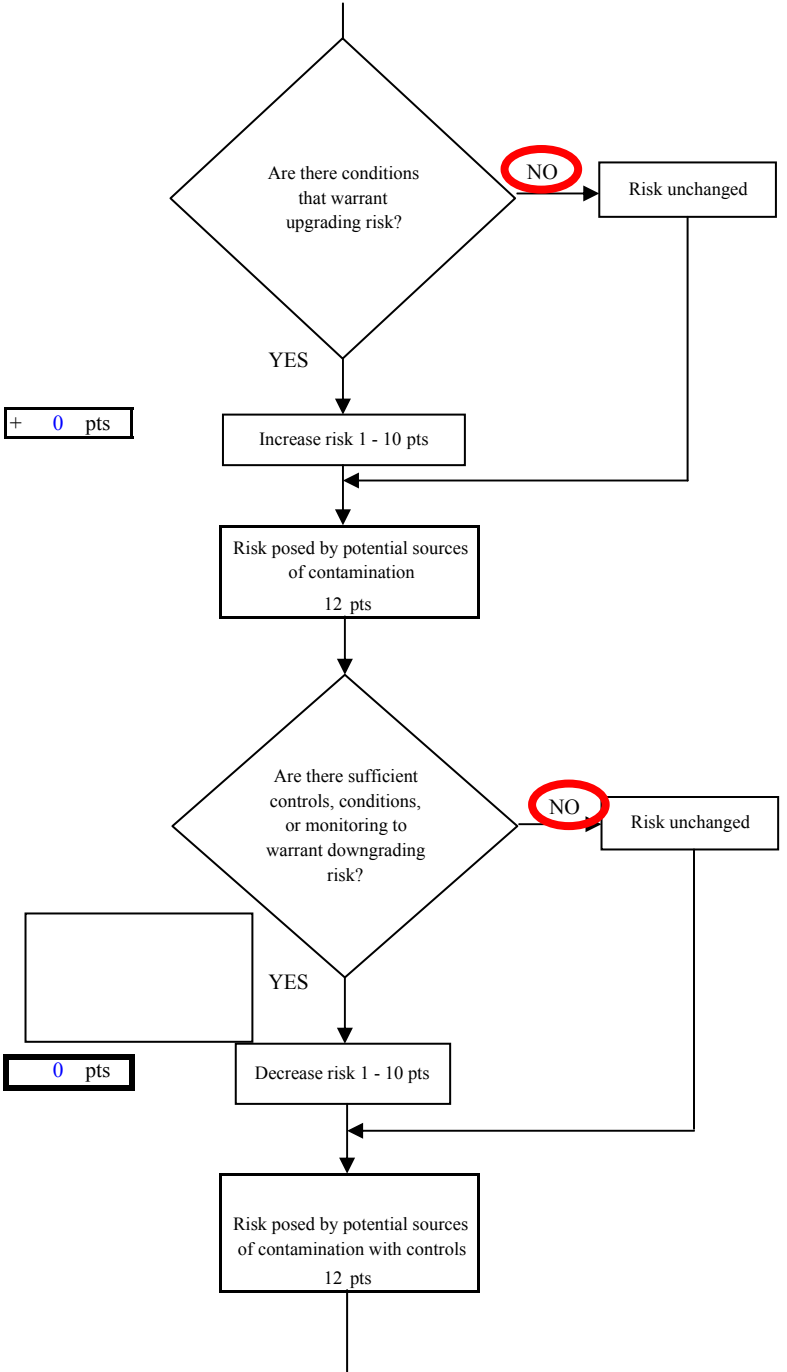
	<b>LOW</b> 10 pts	<b>MEDIUM</b> 20 pts	<b>HIGH</b> 30 pts	<b>VERY HIGH</b> 40 pts
<b>LOW</b>	≥ 10 sources + 10 pts	≥ 10 sources + 5 pts	≥ 20 sources + 5 pts	----
<b>MEDIUM</b>	----	≥ 2 sources + 5 pts	≥ 5 sources + 5 pts	≥ 10 sources + 5 pts
<b>HIGH</b>	----	----	≥ 1 source + 10 pts	≥ 2 sources + 10 pts
<b>VERY HIGH</b>	----	----	----	≥ 1 source + 10 pts

Matrix Score      10

Note: Septic systems, sewerlines, and roads are each assigned a risk ranking for each individual contaminant source in the CSI. The VA, however, counts these contaminant sources as a group and assigns a calculated number of either "lows" or "mediums" based on the density.



**Chart 4. Contaminant risks for City of Shaktoolik (Winter Intake) - Nitrates and Nitrites**



**Chart 5. Vulnerability analysis for City of Shaktoolik (Winter Intake) - Nitrates and Nitrites**

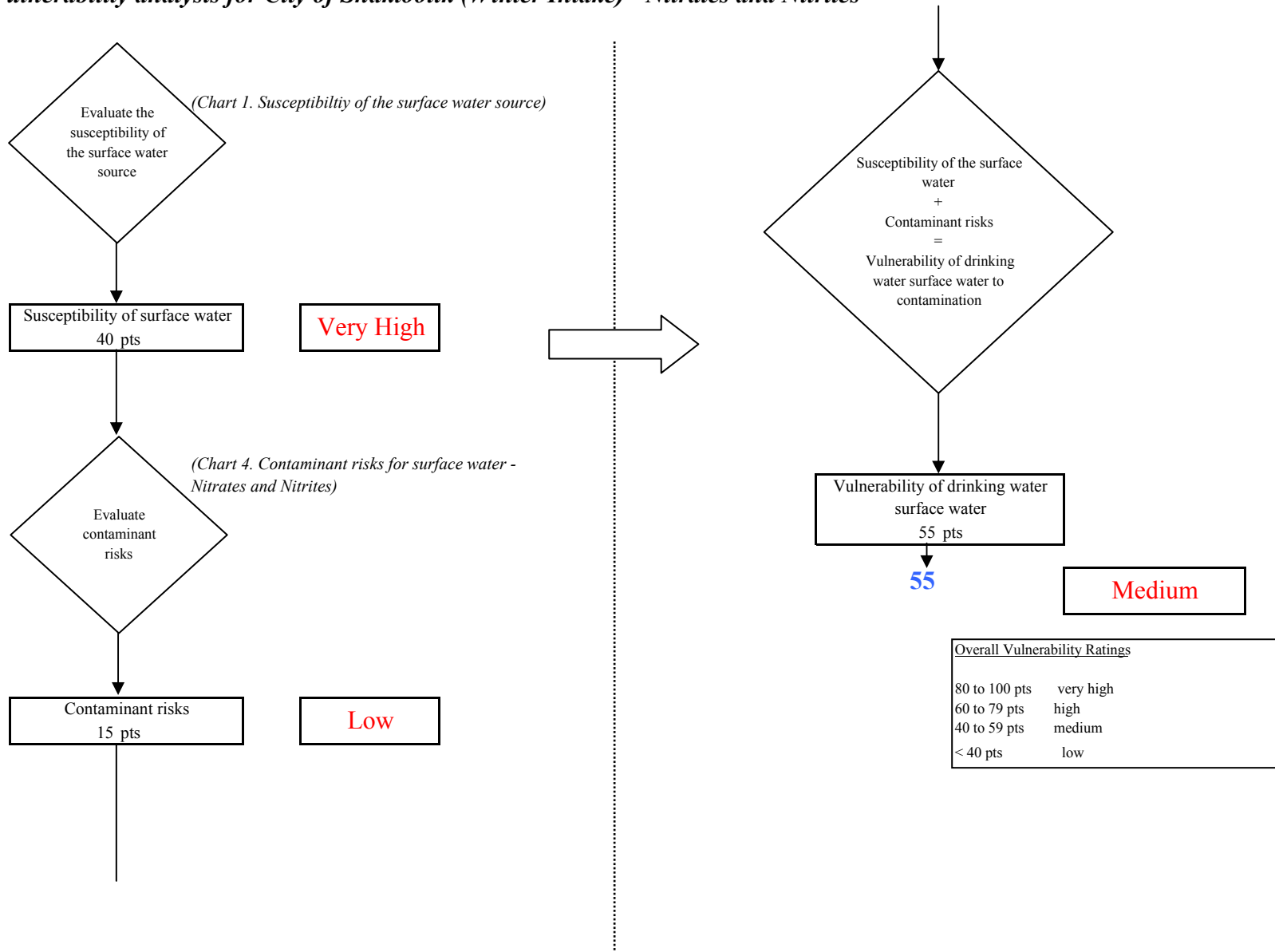
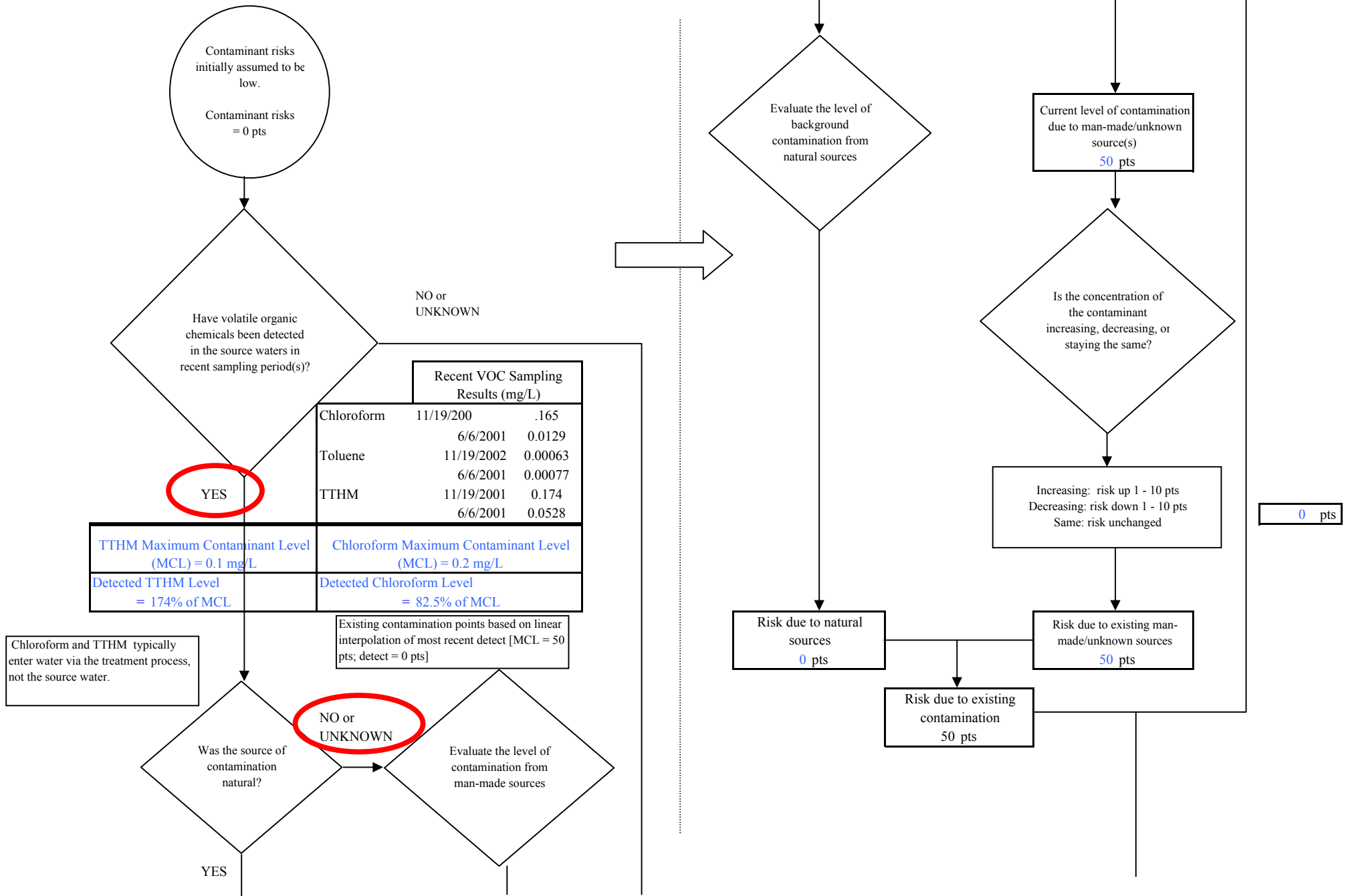
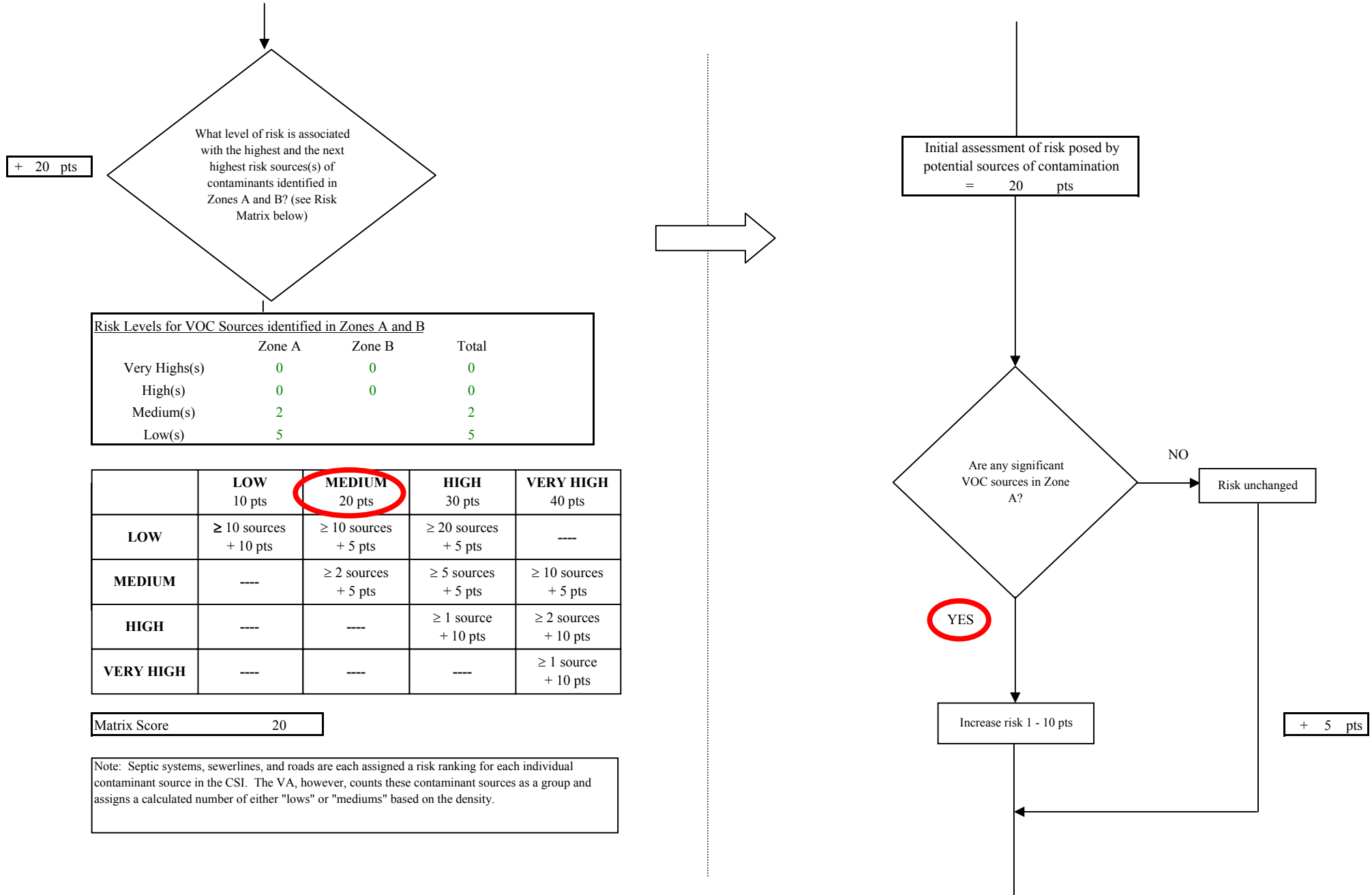


Chart 6. Contaminant risks for City of Shaktoolik (Winter Intake) - Volatile Organic Chemicals

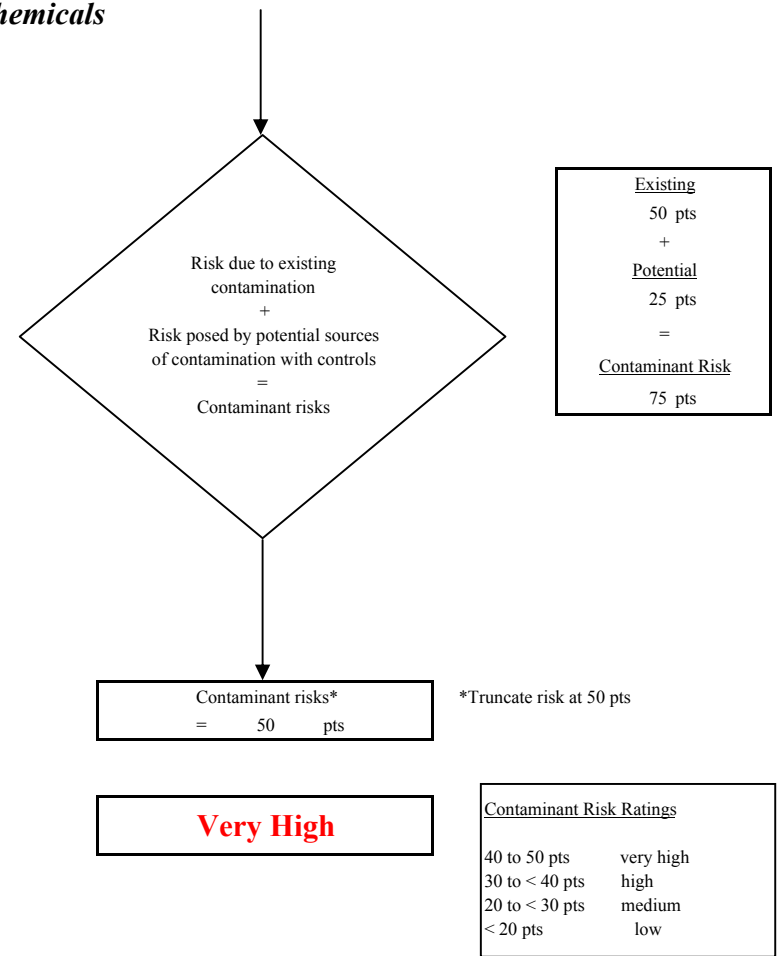
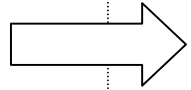
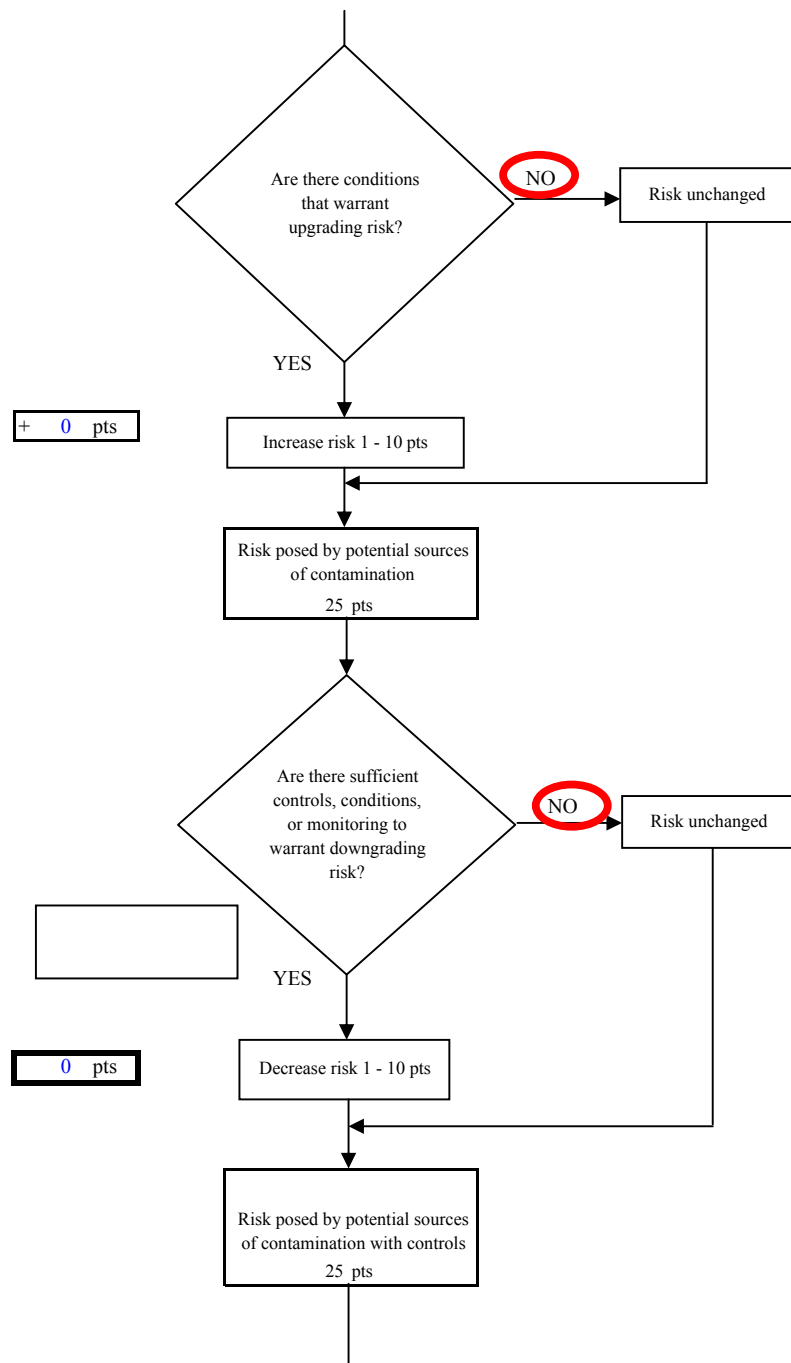




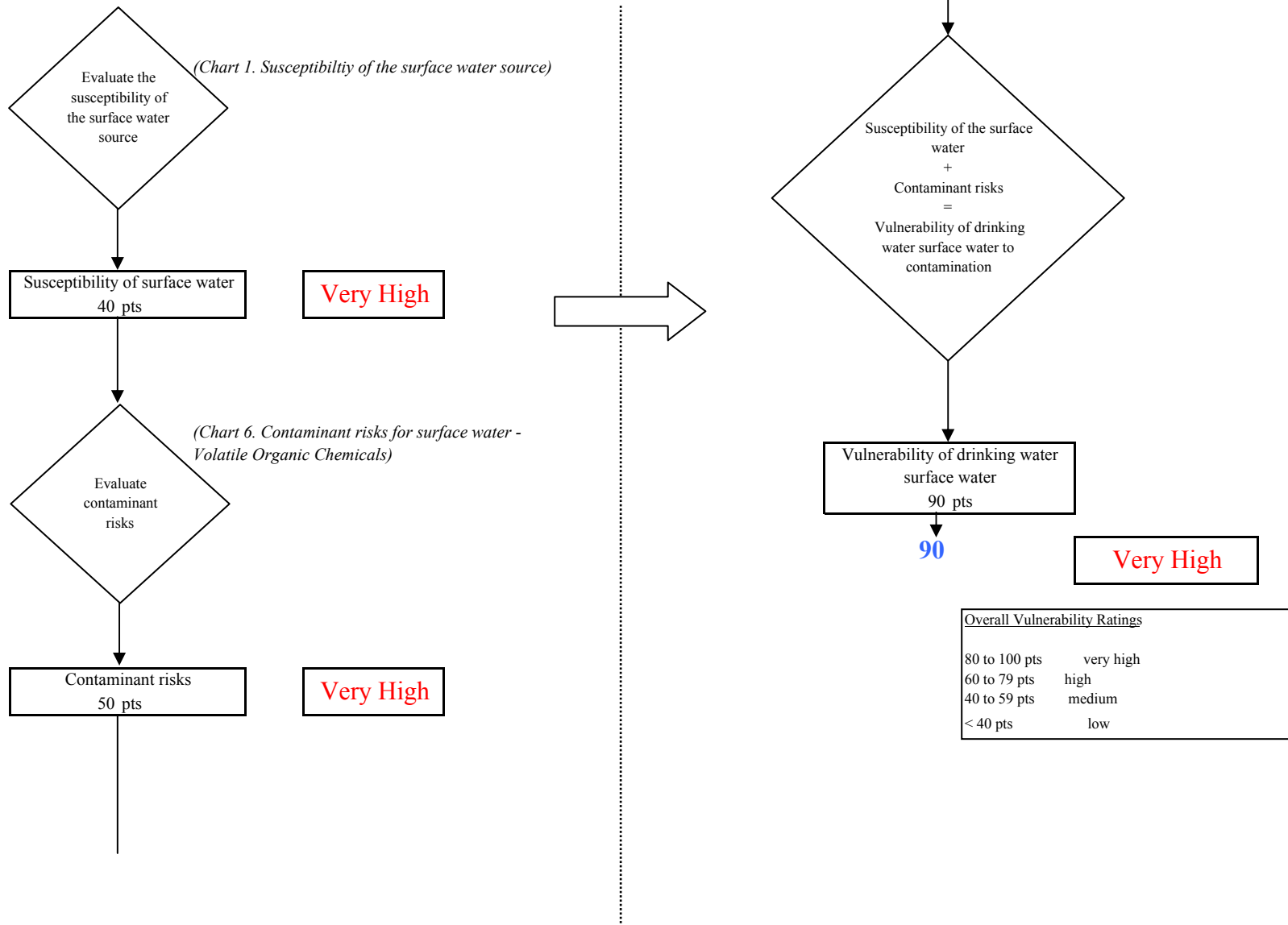
**Chart 6. Contaminant risks for City of Shaktoolik (Winter Intake) - Volatile Organic Chemicals**



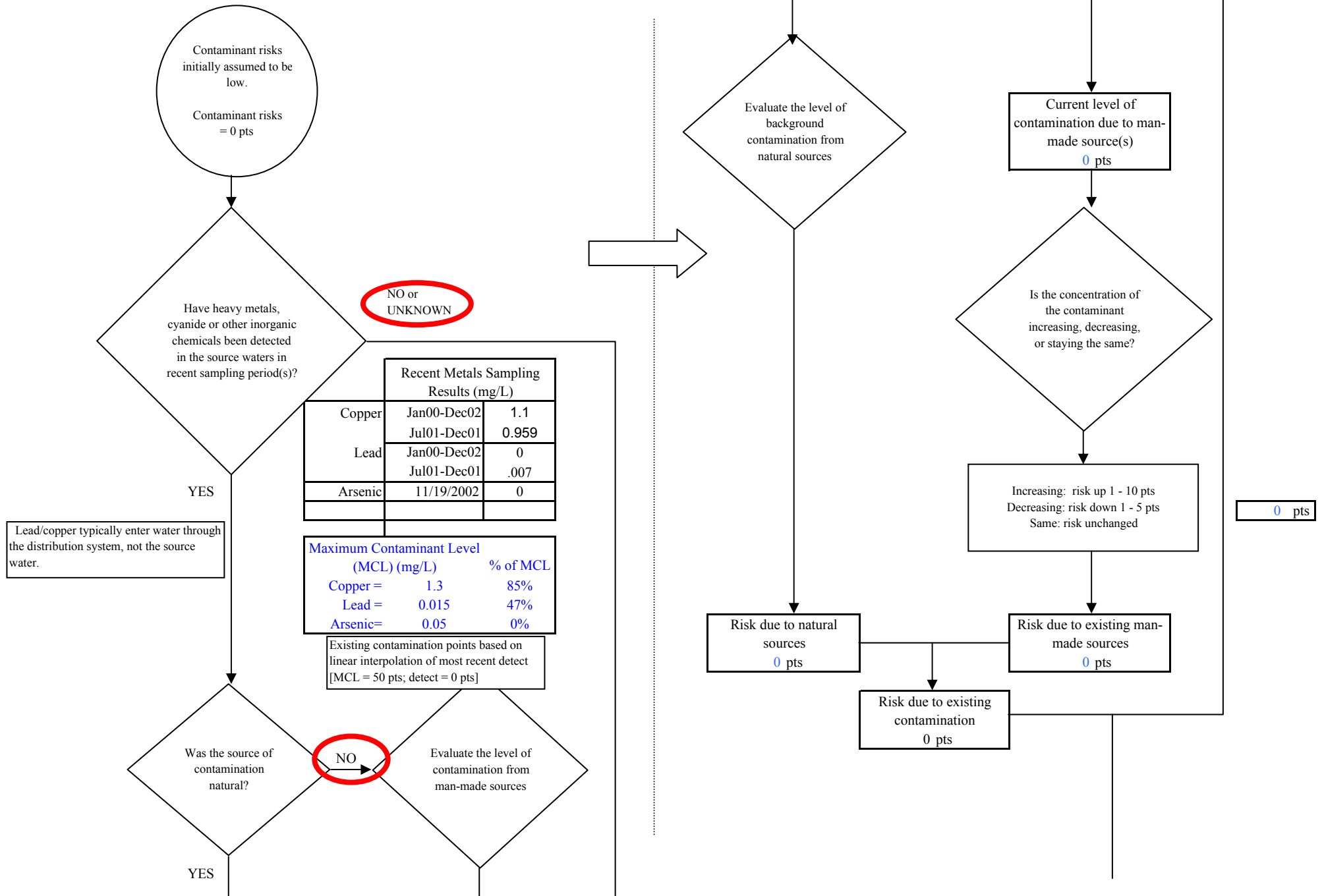
**Chart 6. Contaminant risks for City of Shaktoolik (Winter Intake) - Volatile Organic Chemicals**



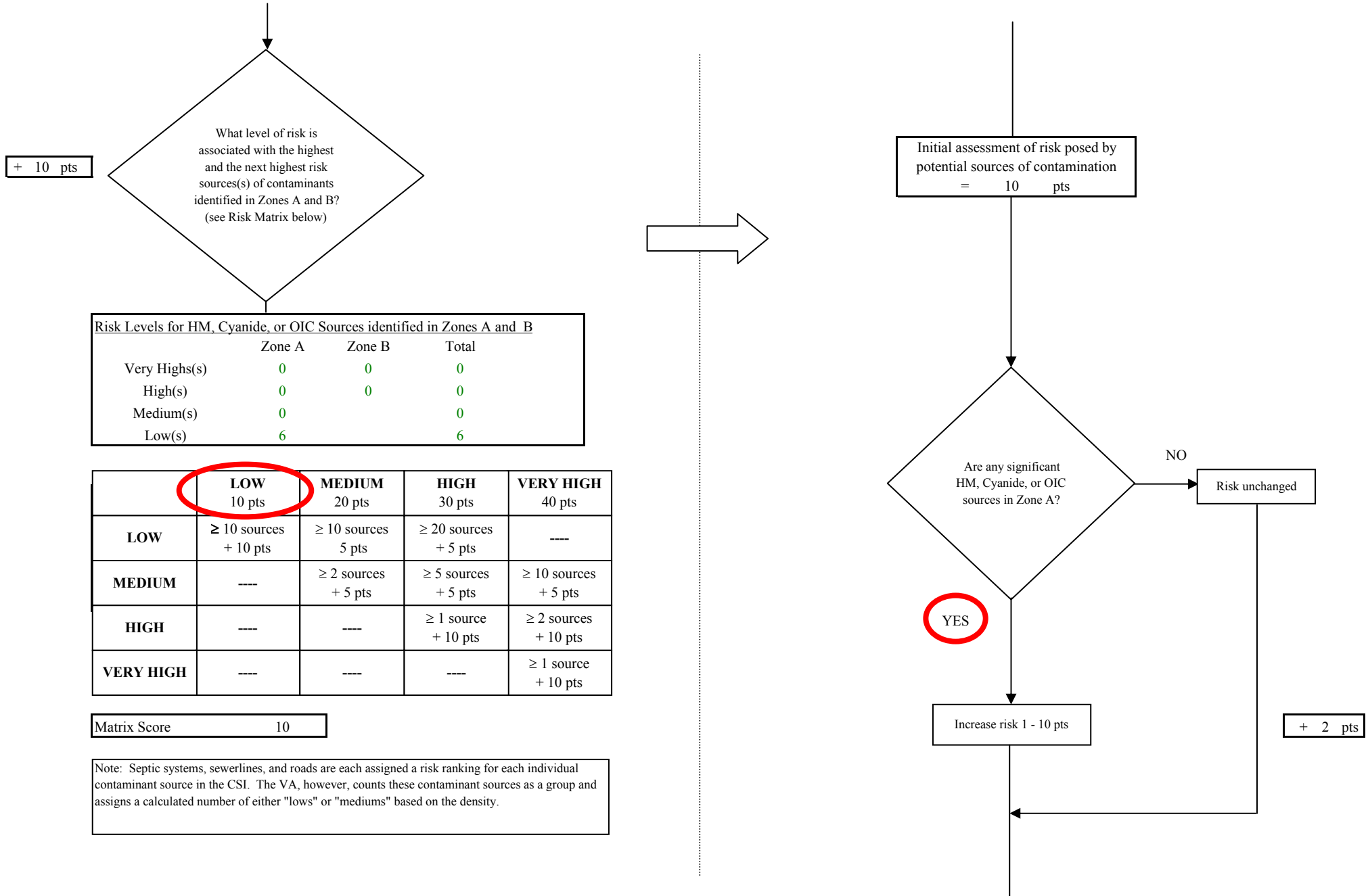
**Chart 7. Vulnerability analysis for City of Shaktoolik (Winter Intake) - Volatile Organic Chemicals**



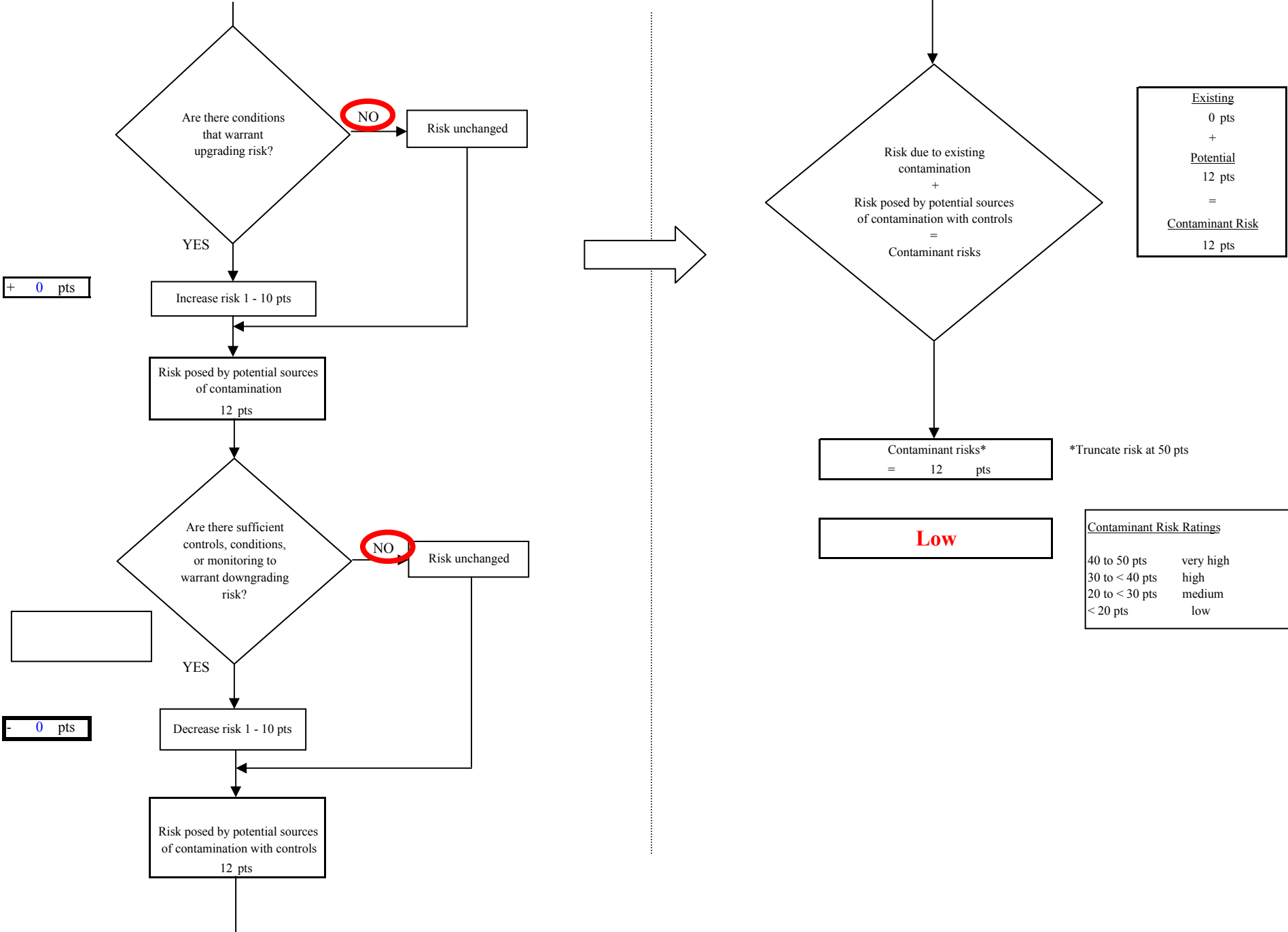
**Chart 8. Contaminant risks for City of Shaktoolik (Winter Intake) - Heavy Metals, Cyanide and Other Inorganic Chemicals**



**Chart 8. Contaminant risks for City of Shaktoolik (Winter Intake) - Heavy Metals, Cyanide and Other Inorganic Chemicals**



**Chart 8. Contaminant risks for City of Shaktoolik (Winter Intake) - Heavy Metals, Cyanide and Other Inorganic Chemicals**



**Chart 9. Vulnerability analysis for City of Shaktoolik (Winter Intake) - Heavy Metals, Cyanide and Other Inorganic Chemicals**

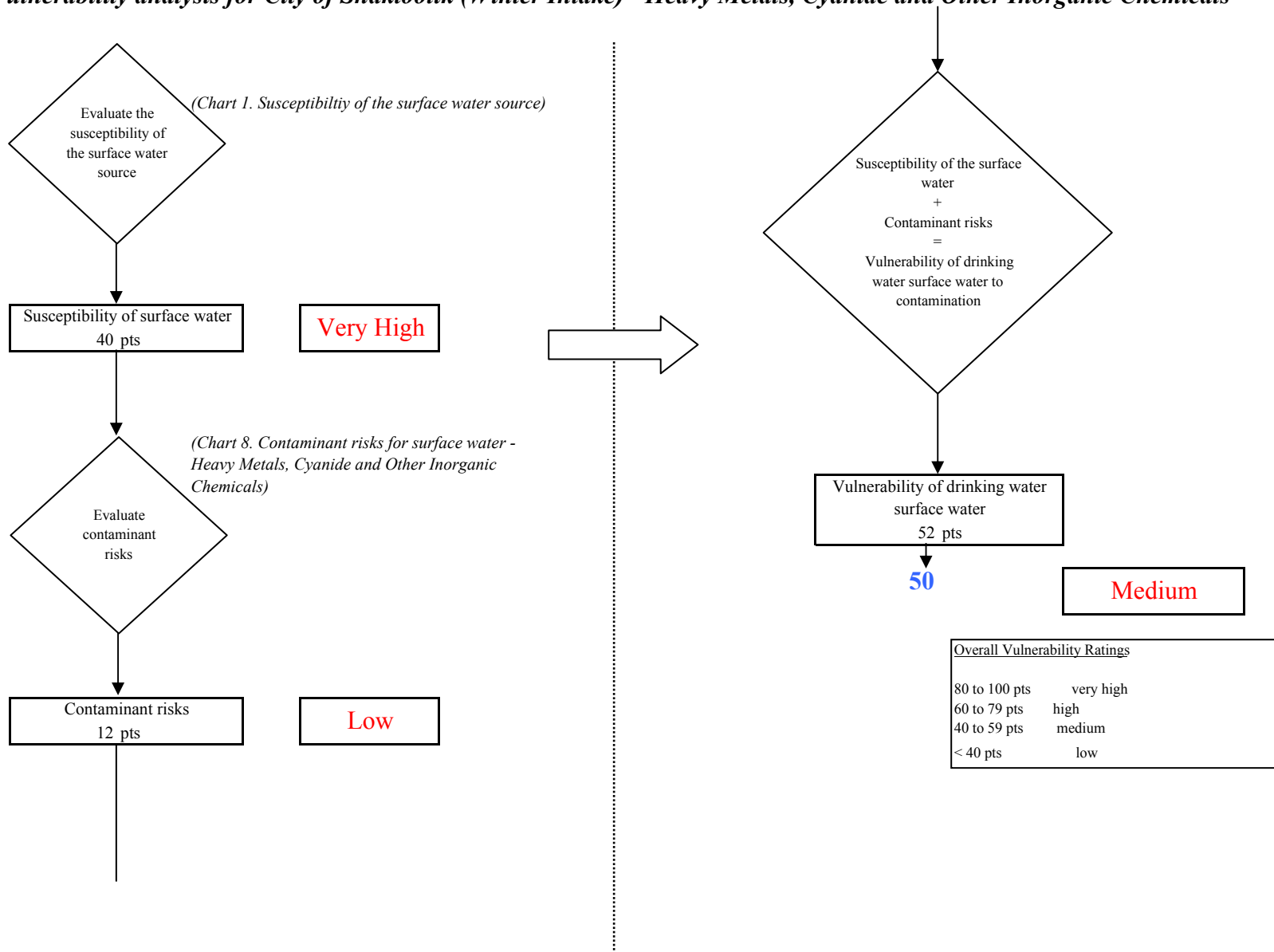


Chart 10. Contaminant risks for City of Shaktoolik (Winter Intake) - Synthetic Organic Chemicals

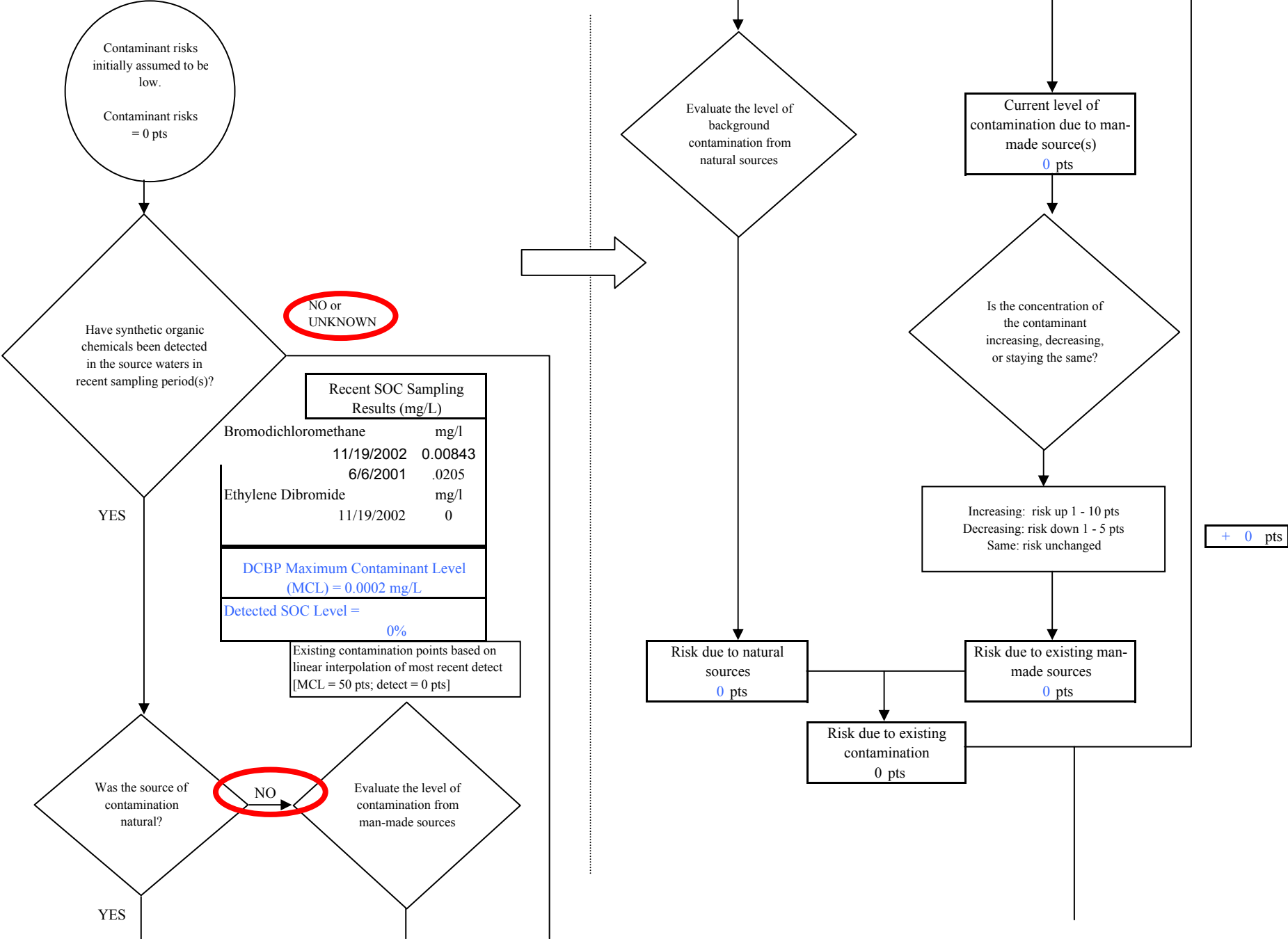
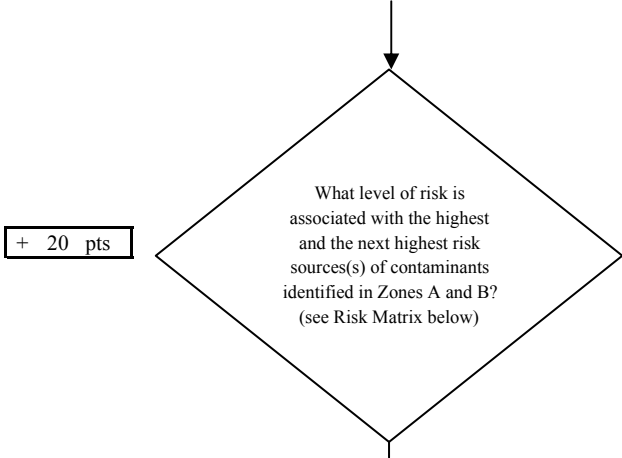




Chart 10. Contaminant risks for City of Shaktoolik (Winter Intake) - Synthetic Organic Chemicals



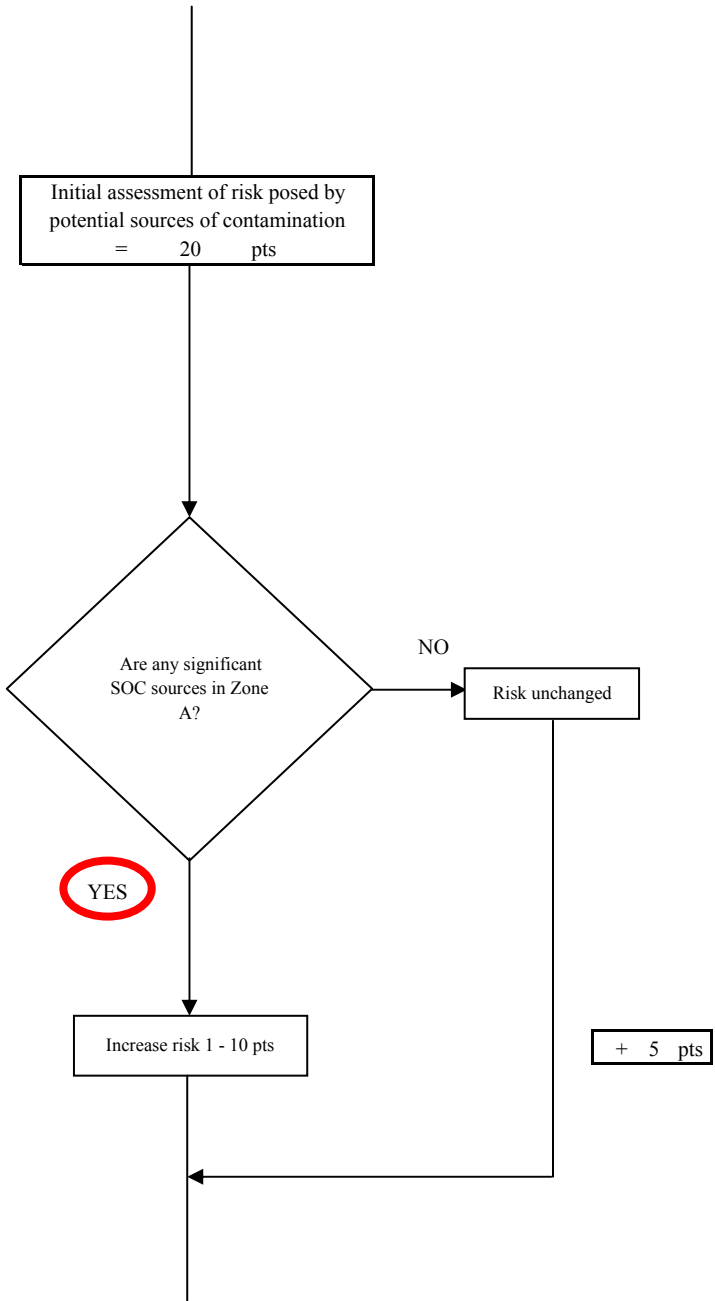
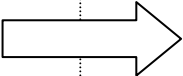
Risk Levels for SOC Sources identified in Zones A and C

	Zone A	Zone B	Total
Very Highs(s)	0	0	0
High(s)	0	0	0
Medium(s)	1	0	1
Low(s)	2	0	2

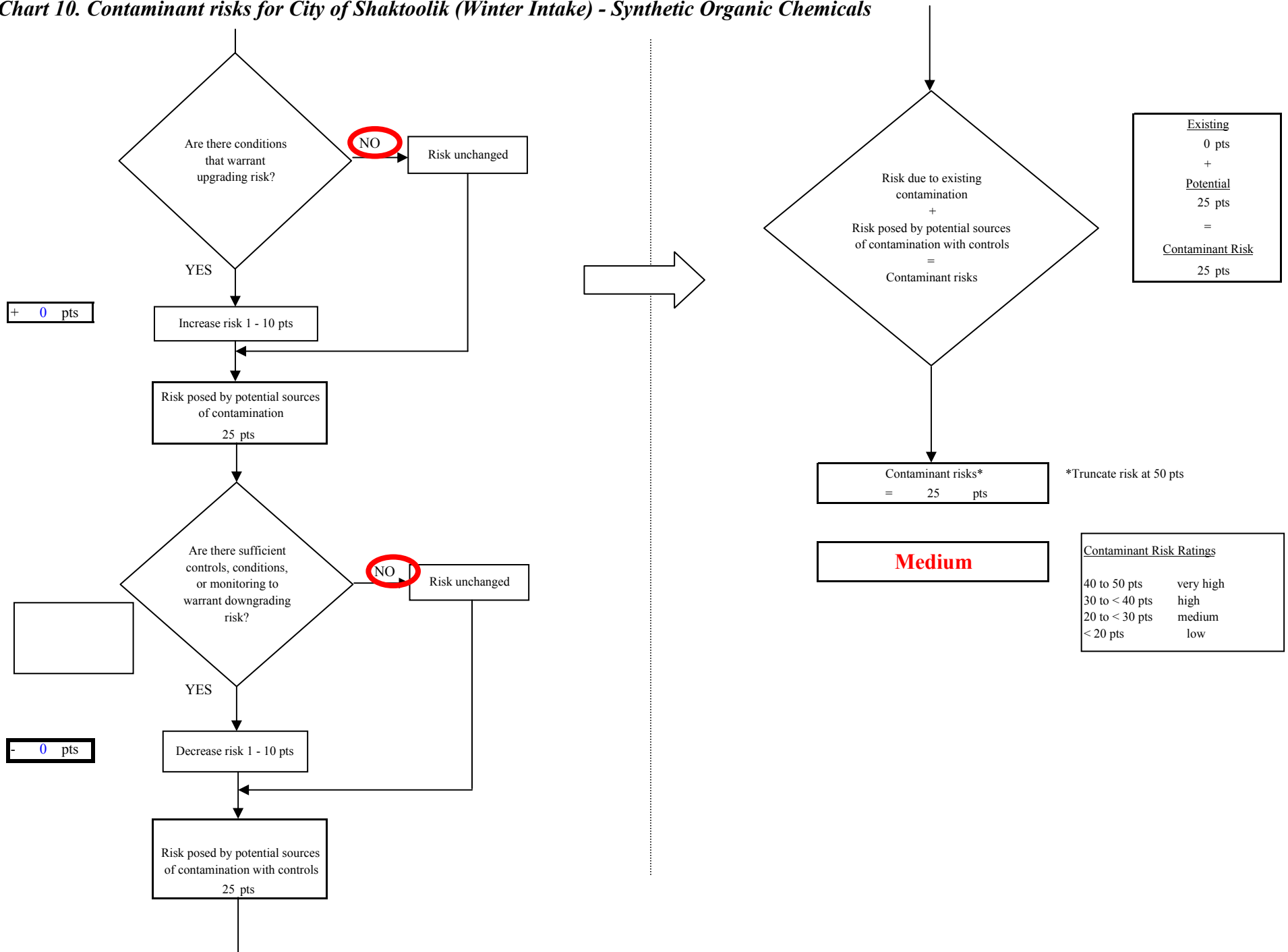
	LOW 10 pts	MEDIUM 20 pts	HIGH 30 pts	VERY HIGH 40 pts
LOW	≥ 10 sources + 10 pts	≥ 10 sources + 5 pts	≥ 20 sources + 5 pts	----
MEDIUM	----	≥ 2 sources + 5 pts	≥ 5 sources + 5 pts	≥ 10 sources + 5 pts
HIGH	----	----	≥ 1 source + 10 pts	≥ 2 sources + 10 pts
VERY HIGH	----	----	----	≥ 1 source + 10 pts

Matrix Score 20

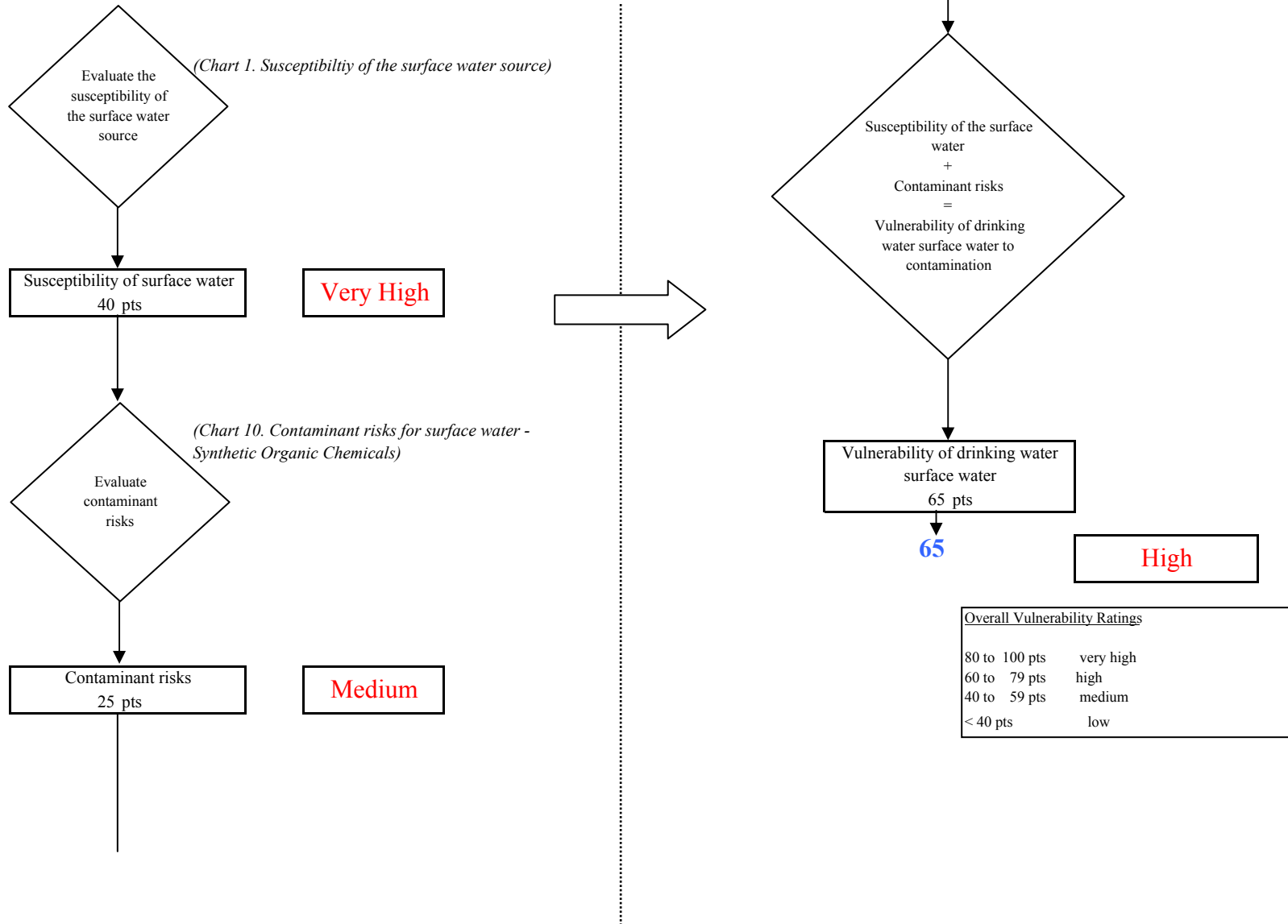
Note: Septic systems, sewerlines, and roads are each assigned a risk ranking for each individual contaminant source in the CSI. The VA, however, counts these contaminant sources as a group and assigns a calculated number of either "lows" or "mediums" based on the density.



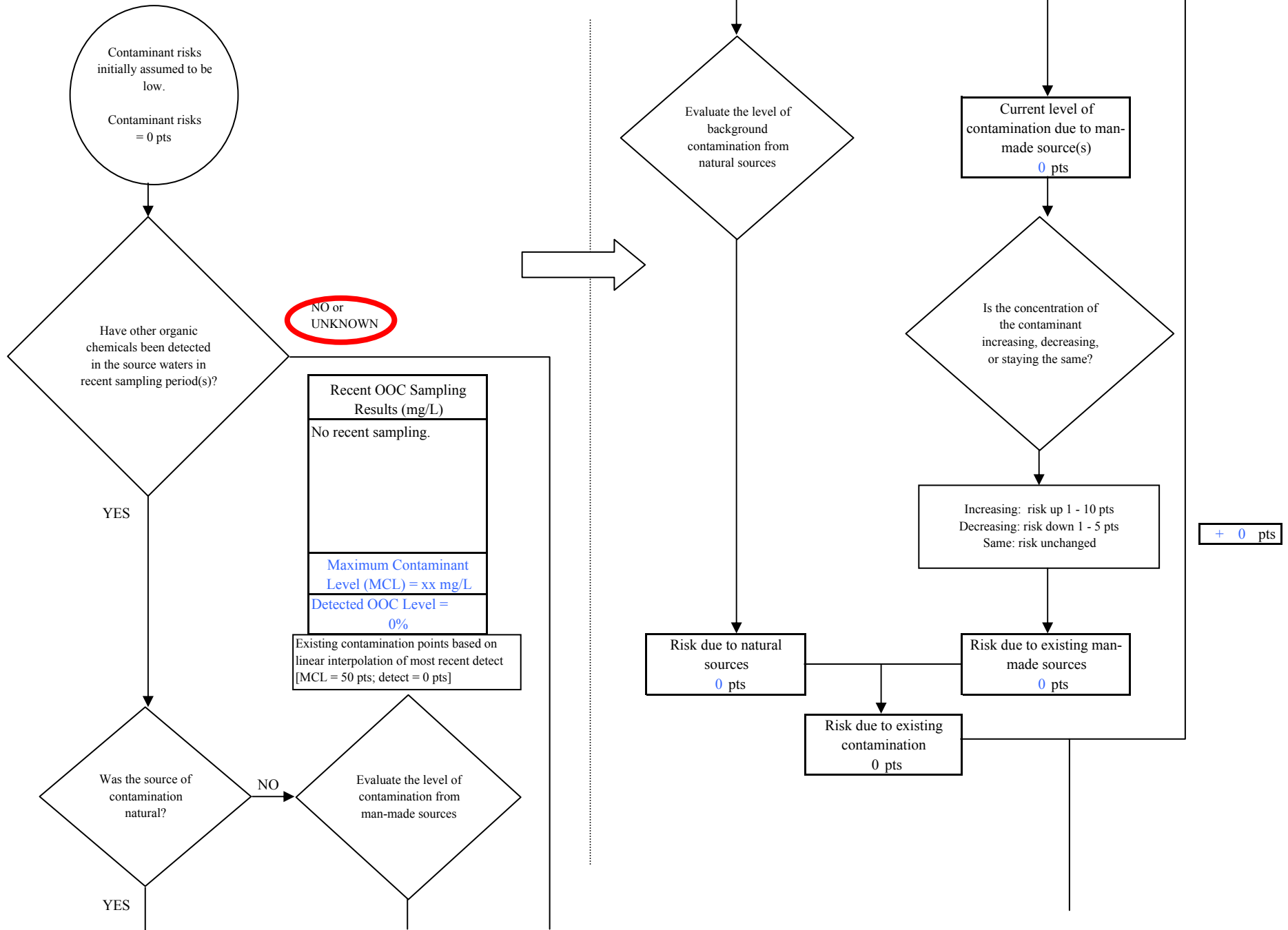
**Chart 10. Contaminant risks for City of Shaktoolik (Winter Intake) - Synthetic Organic Chemicals**



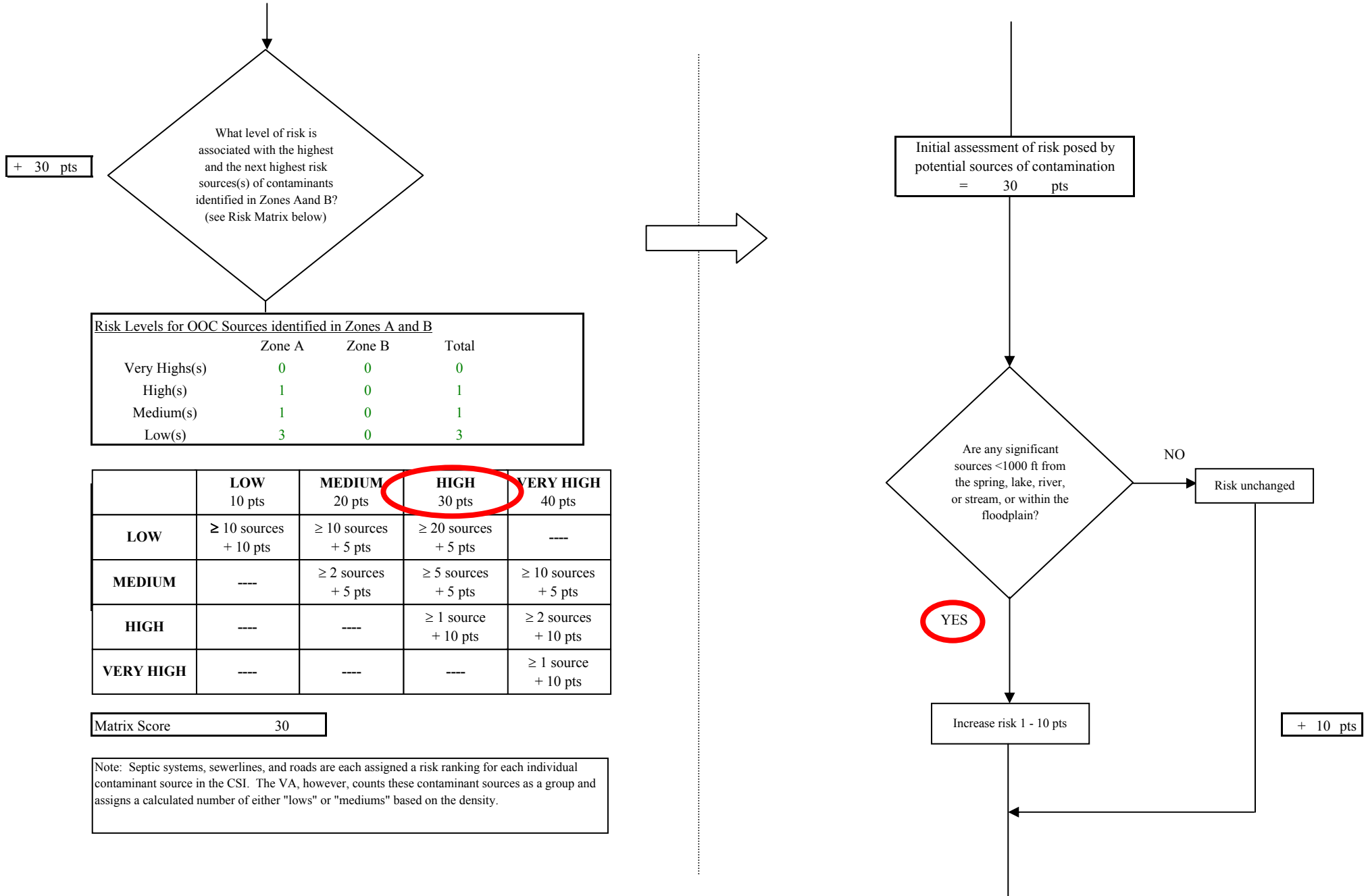
**Chart 11. Vulnerability analysis for City of Shaktoolik (Winter Intake) - Synthetic Organic Chemicals**



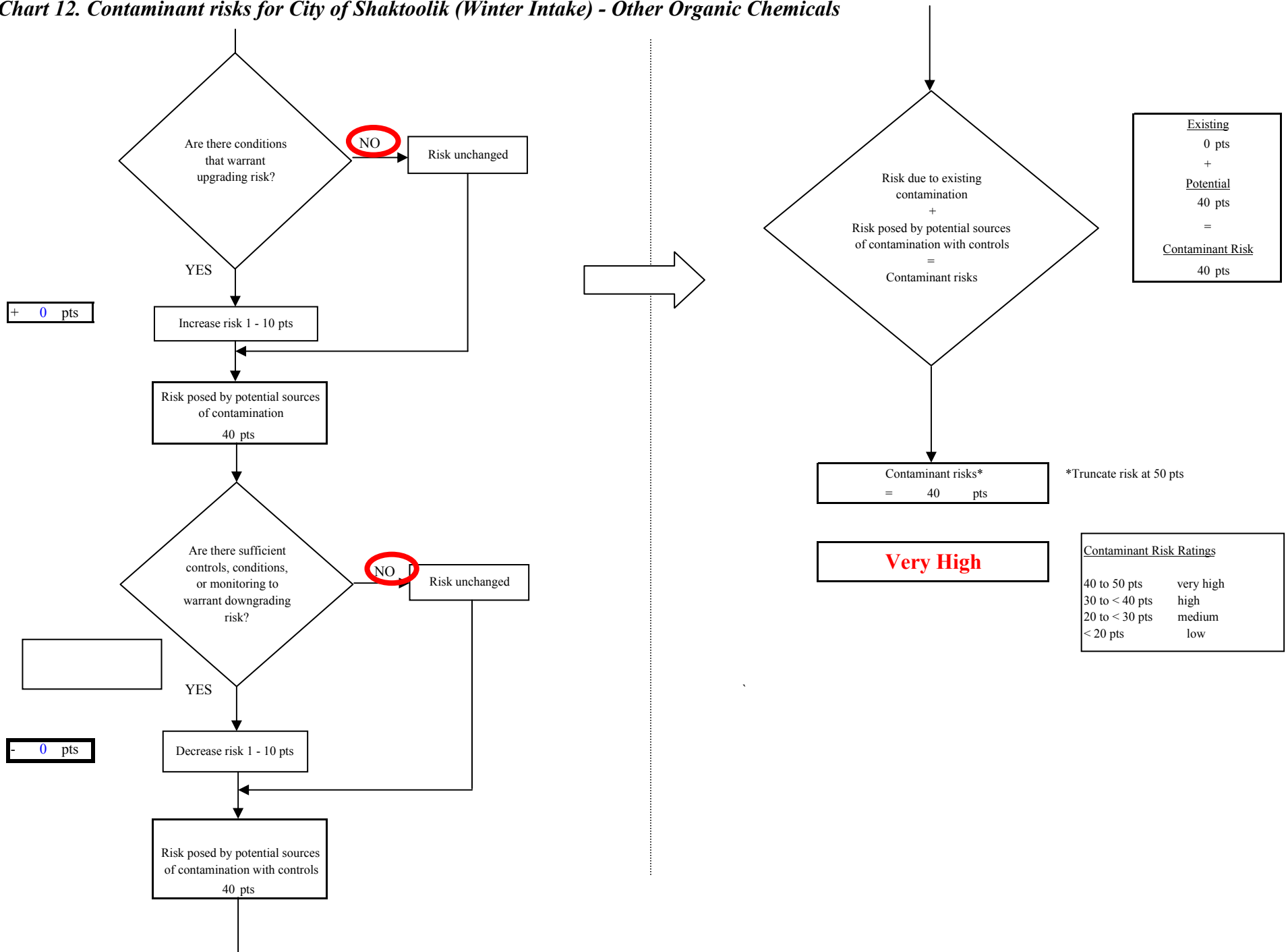
**Chart 12. Contaminant risks for City of Shaktoolik (Winter Intake) - Other Organic Chemicals**



**Chart 12. Contaminant risks for City of Shaktoolik (Winter Intake) - Other Organic Chemicals**



**Chart 12. Contaminant risks for City of Shaktoolik (Winter Intake) - Other Organic Chemicals**



**Chart 13. Vulnerability analysis for City of Shaktoolik (Winter Intake) - Other Organic Chemicals**

