



Source Water Assessment

A Hydrogeologic Susceptibility and Vulnerability
Assessment for
Lost Lake Boy Scout Camp
Drinking Water System,
Salcha area, Alaska
PWSID # 370277

DRINKING WATER PROTECTION PROGRAM REPORT #947

Alaska Department of Environmental Conservation

November 2003

Source Water Assessment for Lost Lake Boy Scout Camp Drinking Water System Salcha area, Alaska PWSID# 370277

DRINKING WATER PROTECTION PROGRAM REPORT #947

The Drinking Water Protection Program (DWPP) is producing Source Water Assessments in compliance with the Safe Drinking Water Act Amendments of 1996. Each assessment includes a delineation of the source water area, an inventory of potential and existing contaminant sources that may impact the water, a risk ranking for each of these contaminants, and an evaluation of the potential vulnerability of these drinking water sources.

These assessments are intended to provide public water systems owners/operators, communities, and local governments with the best available information that may be used to protect the quality of their drinking water. The assessments combine information obtained from various sources, including the U.S. Environmental Protection Agency, Alaska Department of Environmental Conservation (ADEC), public water system owners/operators, and other public information sources. The results of this assessment are subject to change if additional data becomes available. It is anticipated this assessment will be updated every five years to reflect any changes in the vulnerability and/or susceptibility of public drinking water source. If you have any additional information that may affect the results of this assessment, please contact the Program Coordinator of DWPP, (907) 269-7521.

November 2003

CONTENTS

| | |
|--|---|
| Executive Summary..... | 1 |
| Introduction | 1 |
| Lost Lake Boy Scout Camp Public Drinking Water System | 1 |
| Lost Lake Boy Scout Camp Drinking Water Protection Area (DWPA)..... | 2 |
| Inventory of Potential and Existing Contaminant Sources | 2 |
| Ranking of Contaminant Risks..... | 2 |
| Vulnerability of Lost Lake Boy Scout Camp Drinking Water System..... | 3 |

TABLES

| | |
|-------------------------------------|---|
| Table 1. Definition of Zones..... | 2 |
| Table 2. Susceptibility | 3 |
| Table 3. Contaminant Risks..... | 3 |
| Table 4. Overall Vulnerability..... | 4 |

APPENDICES

| | |
|-------------|---|
| Appendix A. | Lost Lake Boy Scout Camp Drinking Water Protection Area (Map 1) |
| Appendix B. | Contaminant Source Inventory for Lost Lake Boy Scout Camp (Table 1) Contaminant Source Inventory and Risk Ranking for Lost Lake Boy Scout Camp– Bacteria and Viruses (Table 2) Contaminant Source Inventory and Risk Ranking for Lost Lake Boy Scout Camp– Nitrates/Nitrites (Table 3) Contaminant Source Inventory and Risk Ranking for Lost Lake Boy Scout Camp– Volatile Organic Chemicals (Table 4) |
| Appendix C. | Lost Lake Boy Scout Camp Drinking Water Protection Area and Potential and Existing Contaminant Sources (Map 2) |
| Appendix D. | Vulnerability Analysis for Contaminant Source Inventory and Risk Ranking for Lost Lake Boy Scout Camp Public Drinking Water Source (Charts 1 – 8) |

Source Water Assessment for Lost Lake Boy Scout Camp Source of Public Drinking Water Salcha area, Alaska

Drinking Water Protection Program

Alaska Department of Environmental Conservation

EXECUTIVE SUMMARY

The public water system for Lost Lake Boy Scout Camp is a Class B (transient/non-community) water system consisting of one well in the Salcha area, Alaska. The wellhead received a susceptibility rating of **Low** and the aquifer received a susceptibility rating of **Medium**. Combining these two ratings produces a **Low** rating for the natural susceptibility of the well. There are no identified potential or current sources of contaminants for Lost Lake Boy Scout Camp public drinking water source that are considered sources of bacteria and viruses, nitrates and/or nitrites, and volatile organic chemicals. Overall, the public water source for Lost Lake Boy Scout Camp received a vulnerability rating of **Medium** for bacteria and viruses, **Low** for nitrates and nitrites, and **Low** for volatile organic chemicals. This assessment of contaminant risks can be used as a foundation for local voluntary protection efforts, as well as a basis for the continuing efforts on the part of the system owner/operator to protect public health.

INTRODUCTION

The Alaska Department of Environmental Conservation (ADEC) is completing source water assessments for all public drinking water sources in the State of Alaska. The purpose of this assessment is to provide the owner/operator of Lost Lake Boy Scout Camp, communities, and local governments with information they can use to preserve the quality of Alaska's public drinking water supplies. The results of this source water assessment can be used to decide where voluntary protection efforts are needed and feasible, and also what efforts will be most effective in reducing contaminant risks to your water system. Ecology & Environment, Inc. has been contracted to perform these assessments under the supervision of ADEC.

This source water assessment combines a review of the natural conditions at the site and the potential and existing contaminant risks. These are combined to determine the overall vulnerability of the drinking water source to contamination.

LOST LAKE BOY SCOUT CAMP PUBLIC DRINKING WATER SYSTEM

Lost Lake Boy Scout Camp public water system is a Class B (transient/non-community) water system. The system consists of one well located on Lost Lake Road at approximately mile 305 Richardson Highway, south of Salcha (see Map 1 of Appendix A). The community of Salcha is located at mouth of the Salcha River, on the Richardson Highway approximately 33 miles southeast of Fairbanks. The estimated 2002 population was 934 residents (ADCED 2003).

Approximately two-thirds of residences and businesses in the Salcha area are served by individual wells and septic systems; the remainder hauls water and use outhouses. Refuse is collected in dumpsters and transported to the Fairbanks North Star Borough landfill (ADCED 2003). Approximately one-third of the residences are used only seasonally.

Surficial deposits in the Salcha area generally are composed of alluvium – silt, sand, and gravel – along the river and mixed alluvium and colluvium elsewhere. The latter comprises boulders, sand, silt, gravel, and rock fragments. It may include perennially frozen silt and peat in the river valley. These deposits are underlain by schist, gneiss and quartzite, which outcrop along the southern, southeastern, and western shores of Harding Lake (Weber et al. 1978).

The general groundwater flow direction is expected to be towards the northwest, towards the Salcha River.

According to the well log, the depth of the Lost Lake Boy Scout Camp well is approximately 90 feet below ground surface.

The most recent Sanitary Survey (5/18/1999) for the water system indicates the land surface is appropriately sloped away from the well. Sloping of the ground surface around the well provides drainage of surface water away from the well casing. Also, the well is grouted according to ADEC regulations. Proper

grouting provides added protection against contaminants traveling along the well casing and into source waters.

This system currently is not operating, because the camp has been closed. However, the well is still in working condition. Formerly, the system operated June 1 - September 1 and served approximately 50 non-residents. This report is being prepared in the event that the water system is used in the future.

LOST LAKE BOY SCOUT CAMP DRINKING WATER PROTECTION AREA (DWPA)

In order to evaluate whether a drinking water source is at risk, we must first evaluate what are the most likely pathways for surface contamination to reach the groundwater. These areas are determined by looking at the characteristics of the soil, groundwater, aquifer, and well.

The most probable area for contamination to reach the drinking water well is the area that contributes water to the well, the groundwater recharge area. This area is designated as the drinking water protection area. Because releases of contaminants within the protection area are most likely to impact the drinking water well, this area will serve as the focus for voluntary protection efforts.

The protection areas established for wells by the ADEC are usually separated into four zones, limited by the watershed. These zones correspond to differences in the time-of-travel (TOT) of the water moving through the aquifer to the well. An outline of the immediate watershed was used to determine the size and shape of the protection area. Additional methods were considered to take into account any uncertainties in groundwater flow and aquifer characteristics to arrive at a meaningful protection area. (Please refer to the Guidance Manual for Class B Public Water Systems for additional information).

The time of travel for contaminants within the water varies and is dependent on the physical and chemical characteristics of each contaminant. The following is a summary of the four protection area zones for wells and the calculated time-of-travel for each:

Table 1. Definition of Zones

| Zone | Definition |
|-------------|---|
| A | ¼ the distance for the 2-yr. time-of-travel |
| B | Less than the 2 year time-of-travel |
| C | Less Than the 5 year time-of-travel |
| D | Less than the 10 year time-of-travel |

The DWPA may be limited by its immediate watershed and therefore may not include all four zones (See Map 1 of Appendix A).

INVENTORY OF POTENTIAL AND EXISTING CONTAMINANT SOURCES

The Drinking Water Protection Program has completed an inventory of potential and existing sources of contamination within the Lost Lake Boy Scout Camp DWPA. This inventory was completed through a search of agency records and other publicly available information. Potential sources of contamination to the drinking water aquifer include a wide range of categories and types. Potential drinking water contaminants are found within agricultural, residential, commercial, and industrial areas, but can also occur within areas that have little or no development.

For the basis of all Class B public water system assessments, three categories of drinking water contaminants were inventoried. They include:

- Bacteria and viruses;
- Nitrates and/or nitrites;
- Volatile organic chemicals

The sources, if any, are displayed on Map 2 of Appendix C and summarized in Table 1 of Appendix B.

RANKING OF CONTAMINANT RISKS

Once the potential and existing sources of contamination have been identified, they are assigned a ranking according to what type and level of risk they represent. Ranking of contaminant risks for a “potential” or “existing” source of contamination is a function of toxicity and volumes of specific contaminants associated with that source. Rankings include:

- Low;
- Medium;
- High; and
- Very High.

The time-of-travel for contaminants within the water varies and is dependent on the physical and chemical characteristics of each contaminant. Bacteria and Viruses are only inventoried in Zones A and B because of their short life span. Only “Very High” and “High” rankings are inventoried within the outer Zone D due to the probability of contaminant dilution by the time the contaminants get to the well.

Tables 2 through 4 in Appendix B contain the ranking of potential and existing sources of contamination with respect to bacteria and viruses, nitrates and/or nitrites, and volatile organic chemicals.

VULNERABILITY OF LOST LAKE BOY SCOUT CAMP DRINKING WATER SYSTEM

Vulnerability of a drinking water source to contamination is a combination of two factors:

- Natural susceptibility; and
- Contaminant risks.

Appendix D contains eight charts, which together form the ‘Vulnerability Analysis’ for a source water assessment for a public drinking water source. Chart 1 analyzes the ‘Susceptibility of the Wellhead’ to contamination by looking at the construction of the well and its surrounding area. Chart 2 analyzes the ‘Susceptibility of the Aquifer’ to contamination by looking at the naturally occurring attributes of the water source and influences on the groundwater system that might lead to contamination. Chart 3 analyzes ‘Contaminant Risks’ for the drinking water source with respect to bacteria and viruses. The ‘Contaminant Risks’ portion of the analysis considers potential sources of contaminants as well as a review of contamination that has or may have occurred, but has not arrived or been detected at the well. Lastly, Chart 4 contains the ‘Vulnerability Analysis for Bacteria and Viruses’. Charts 5 through 8 contain the Contaminant Risks and Vulnerability Analyses for nitrates and nitrites and volatile organic chemicals, respectively.

A score for the Natural Susceptibility is reached by considering the properties of the well and the aquifer.

Susceptibility of the Wellhead (0 – 25 Points)
(Chart 1 of Appendix D)

+

Susceptibility of the Aquifer (0 – 25 Points)
(Chart 2 of Appendix D)

=

Natural Susceptibility (Susceptibility of the Well)
(0 – 50 Points)

A ranking is assigned for the Natural Susceptibility according to the point score:

| Natural Susceptibility Ratings | |
|--------------------------------|-----------|
| 40 to 50 pts | Very High |
| 30 to < 40 pts | High |
| 20 to < 30 pts | Medium |
| < 20 pts | Low |

The well for Lost Lake Boy Scout Camp is completed in a confined aquifer. Confined aquifers are somewhat protected from migration of water from the surface by an overlying low-permeability layer, such as a clay or till. However, contaminants at the surface have the potential to impact this aquifer adversely because wells penetrating the aquifer can act as conduits. Table 2 shows the Susceptibility scores and ratings for Lost Lake Boy Scout Camp.

Table 2. Susceptibility

| | Score | Rating |
|--------------------------------|-------|--------|
| Susceptibility of the Wellhead | 0 | Low |
| Susceptibility of the Aquifer | 11 | Medium |
| Natural Susceptibility | 11 | Low |

Contaminant risks to a drinking water source depend on the type, number or density, and distribution of contaminant sources. This score has been derived from an examination of existing and historical contamination that has been detected at the drinking water source through routine sampling. It also evaluates potential sources of contamination. Flow charts are used to assign a point score, and ratings are assigned in the same way as for the natural susceptibility:

| Contaminant Risk Ratings | |
|--------------------------|-----------|
| 40 to 50 pts | Very High |
| 30 to < 40 pts | High |
| 20 to < 30 pts | Medium |
| < 20 pts | Low |

Table 3 summarizes the Contaminant Risks for each category of drinking water contaminants.

Table 3. Contaminant Risks

| Category | Score | Rating |
|----------------------------|-------|-----------|
| Bacteria and Viruses | 42 | Very High |
| Nitrates and/or Nitrites | 0 | Low |
| Volatile Organic Chemicals | 0 | Low |

Finally, an overall vulnerability score is assigned for each water system by combining each of the contaminant risk scores with the natural susceptibility score:

$$\begin{array}{r}
 \text{Natural Susceptibility (0 – 50 points)} \\
 + \\
 \text{Contaminant Risks (0 – 50 points)} \\
 = \\
 \text{Vulnerability of the} \\
 \text{Drinking Water Source to Contamination (0 – 100).}
 \end{array}$$

Again, rankings are assigned according to a point score:

| Overall Vulnerability Ratings | |
|-------------------------------|-----------|
| 80 to 100 pts | Very High |
| 60 to < 80 pts | High |
| 40 to < 60 pts | Medium |
| < 40 pts | Low |

Table 4 contains the overall vulnerability scores (0 – 100) and ratings for each of the three categories of drinking water contaminants. Note: scores are rounded off to the nearest five.

Table 4. Overall Vulnerability

| Category | Score | Rating |
|----------------------------|-------|--------|
| Bacteria and Viruses | 55 | Medium |
| Nitrates and/or Nitrites | 10 | Low |
| Volatile Organic Chemicals | 10 | Low |

Bacteria and Viruses

The contaminant risk for bacteria and viruses is Very High, with no identified contaminant sources representing a risk to the drinking water well (see Chart 3 – Contaminant Risks for Bacteria and Viruses in Appendix D). A pit toilet was formerly located near the well, and may have contributed to the positive bacteria test result that caused a high score for this category.

Residents and businesses in the area generally dispose of wastewater in private septic systems. Such systems can pose a risk of bacteria/virus and nitrate/nitrite contamination to drinking water sources. Proper design and maintenance of septic systems is the best safeguard against such contamination. Only a small amount of bacteria and viruses are required to endanger public health. Due to the detection of bacteria and viruses during recent water sampling, the score on Chart 2 is the maximum score. However, that score has been downgraded to reflect that the last positive test occurred in 2001, and that subsequent tests have showed nondetectable concentrations of bacteria and viruses.

After combining the contaminant risk for bacteria and

viruses with the natural susceptibility of the well, the overall vulnerability of the well to contamination by bacteria and viruses is Medium.

Nitrates and Nitrites

The contaminant risk for nitrates and nitrites is Low, with no identified contaminant sources representing a risk to this source of public drinking water (see Chart 5 - Contaminant Risks for Nitrates and/or Nitrites in Appendix D). Nitrates are very mobile, moving at approximately the same rate as water.

The last five years' sampling history for Lost Lake Boy Scout Camp public water source indicates the most recent concentration detected was 0.000 mg/L on 6/25/2002, which represents 0.0% of the Maximum Contaminant Level (MCL). While nitrates and nitrites can occur naturally in groundwater, a level of 20% of the MCL or more is considered to be due to manmade sources. Water with levels of nitrates and nitrites below 100% of the MCL is considered safe to drink by the U.S. Environmental Protection Agency (EPA 2003). After combining the contaminant risk for nitrates and nitrites with the natural susceptibility of the well, the overall vulnerability of the well to contamination by nitrates and nitrites is Low.

Volatile Organic Chemicals

The contaminant risk for volatile organic chemicals is Low, with no identified contaminant sources representing a risk for volatile organic chemicals (see Chart 7 – Contaminant Risks for Volatile Organic Chemicals in Appendix D).

Residents in the area typically heat their homes with various types of on-site fuel sources, including propane and heating oil stored in aboveground or underground storage tanks. Although this report does not address heating oil tanks (unless their location is known), they can pose a risk of volatile organic chemical contamination to drinking water sources. The most common causes of fuel leaks of these heating oil systems are overfilling the tank, ruptured fuel lines, leaking storage tanks, damaged or faulty valves and vandalism. Secondary containment around the tank and regular system maintenance can help prevent many of these harmful fuel leaks and help protect the drinking water supply.

Class B water systems generally are not required to test for volatile organic chemicals. After combining the potential contaminant risk for volatile organic chemicals with the natural susceptibility of the well, the overall vulnerability of the well to contamination by volatile organic chemicals is Low.

REFERENCES

Alaska Department of Community and Economic Development (ADCED), 2003, Alaska Community Database [WWW database]. URL http://www.dced.state.ak.us/cbd/commdb/CF_BLOCK.cfm

Freeze, R.A. and Cherry, J.A., 1979, *Groundwater*, Upper Saddle River, NJ: Prentice Hall, Inc.

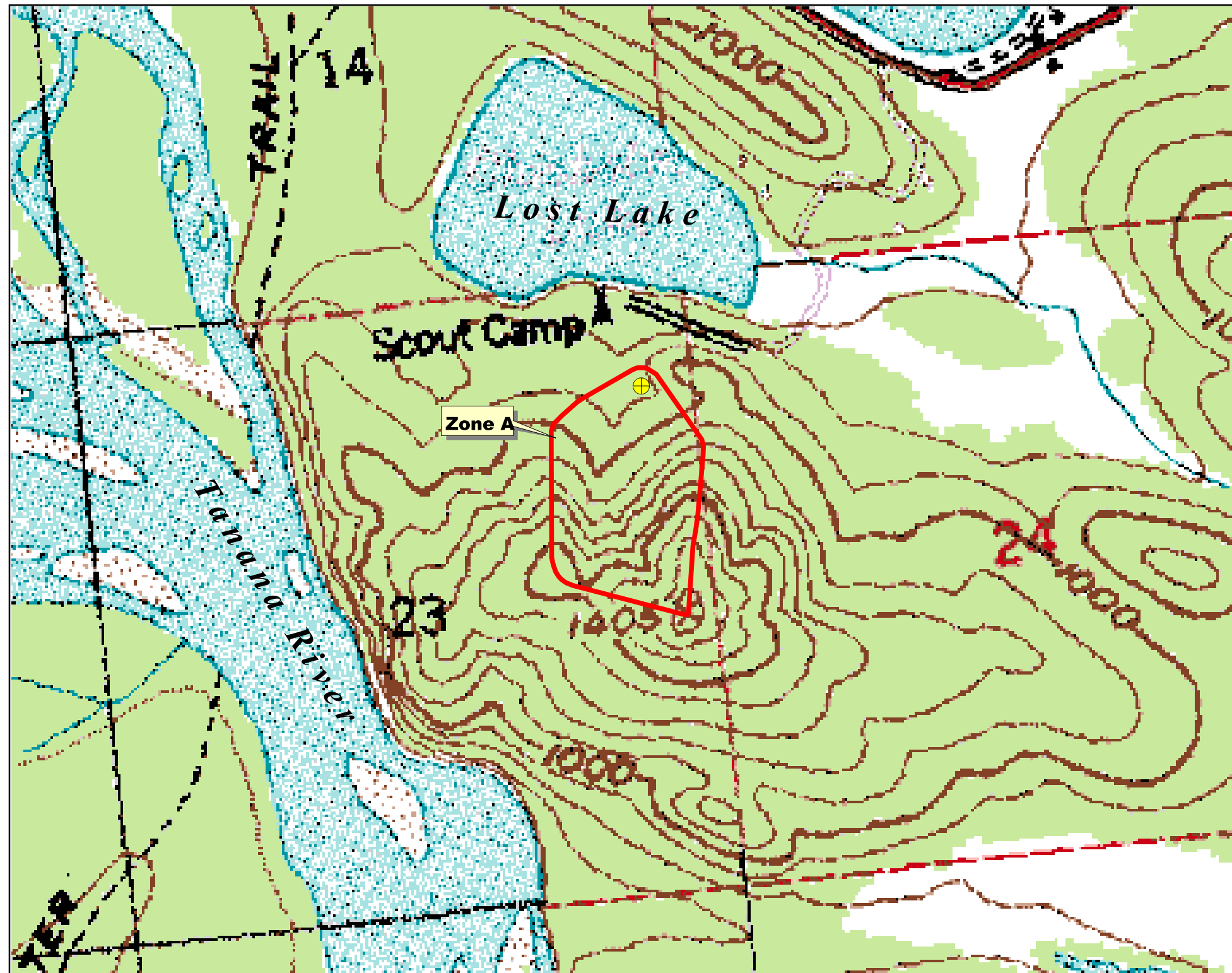
United States Environmental Protection Agency (EPA), 2003, *Consumer Fact Sheet on Nitrates/Nitrites*, http://www.epa.gov/OGWDW/contaminants/dw_contamfs/nitrates.html.

Weber, Florence R., Foster, Helen L., Keith, Terry E.C., and Dusel-Bacon, Cynthia, 1978, *Preliminary Geologic Map of the Big Delta Quadrangle, Alaska*, Anchorage, AK: Department of the Interior, United States Geological Survey.

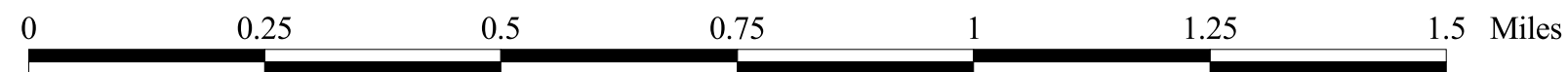
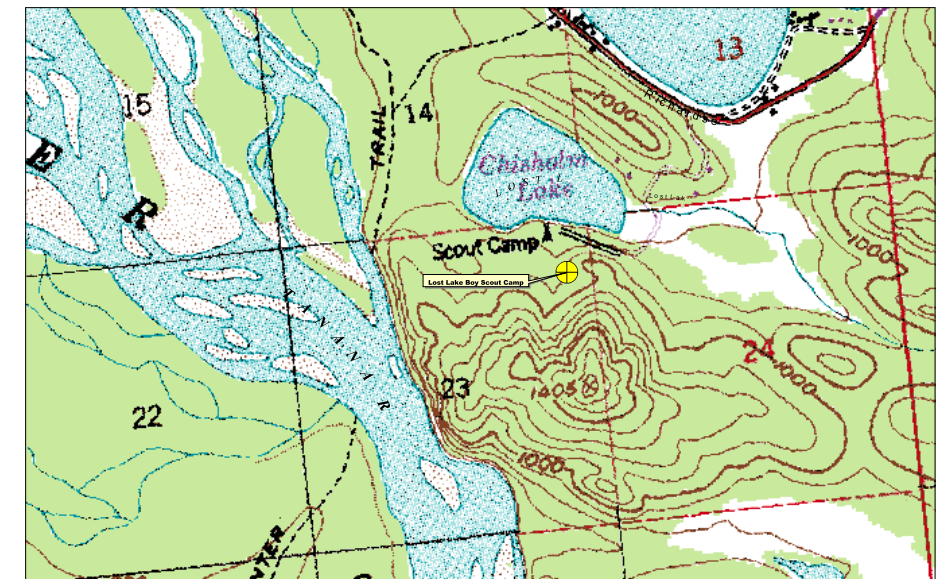
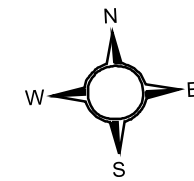
APPENDIX A

Lost Lake Boy Scout Camp Drinking Water Protection Area Location Map (Map 1)

Drinking Water Protection Area for Lost Lake Boy Scout Camp



- ☉ Lost Lake Boy Scout Camp Well
- ▭ Zone A (Few Months Travel Time)



PWSID 370277.001

Map 1

APPENDIX B

Contaminant Source Inventory and Risk Ranking for Lost Lake Boy Scout Camp (Tables 1-4)

Not Applicable – No Contaminant Sources Identified

APPENDIX C

Lost Lake Boy Scout Camp Drinking Water Protection Area and Potential and Existing Contaminant Sources (Map 2)

Not Applicable – No Contaminant Sources Identified

APPENDIX D

Vulnerability Analysis for Lost Lake Boy Scout Camp Public Drinking Water Source (Charts 1-8)

Chart 1. Susceptibility of the wellhead - *Lost Lake Boy Scout Camp*

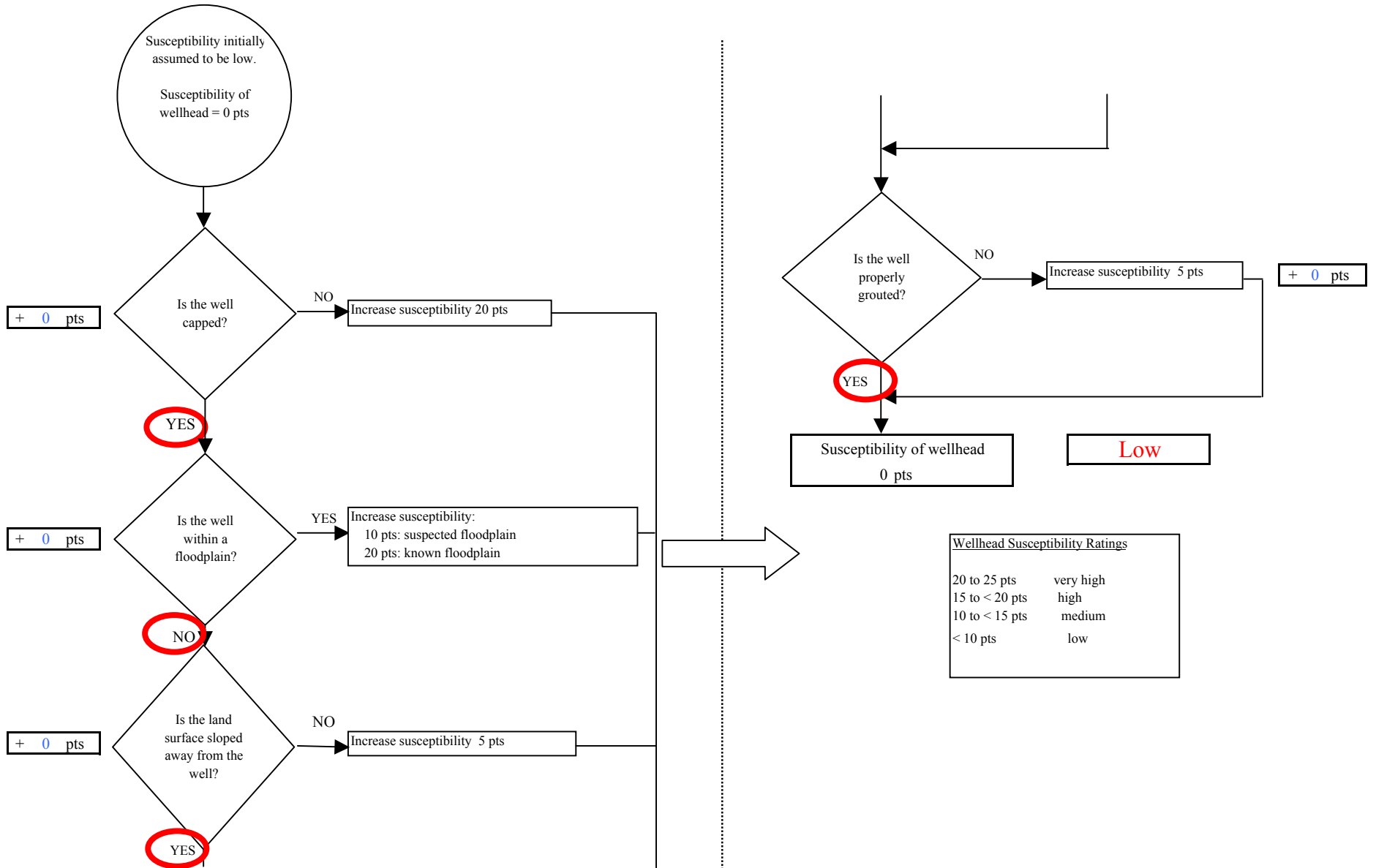


Chart 2. Susceptibility of the aquifer - Lost Lake Boy Scout Camp

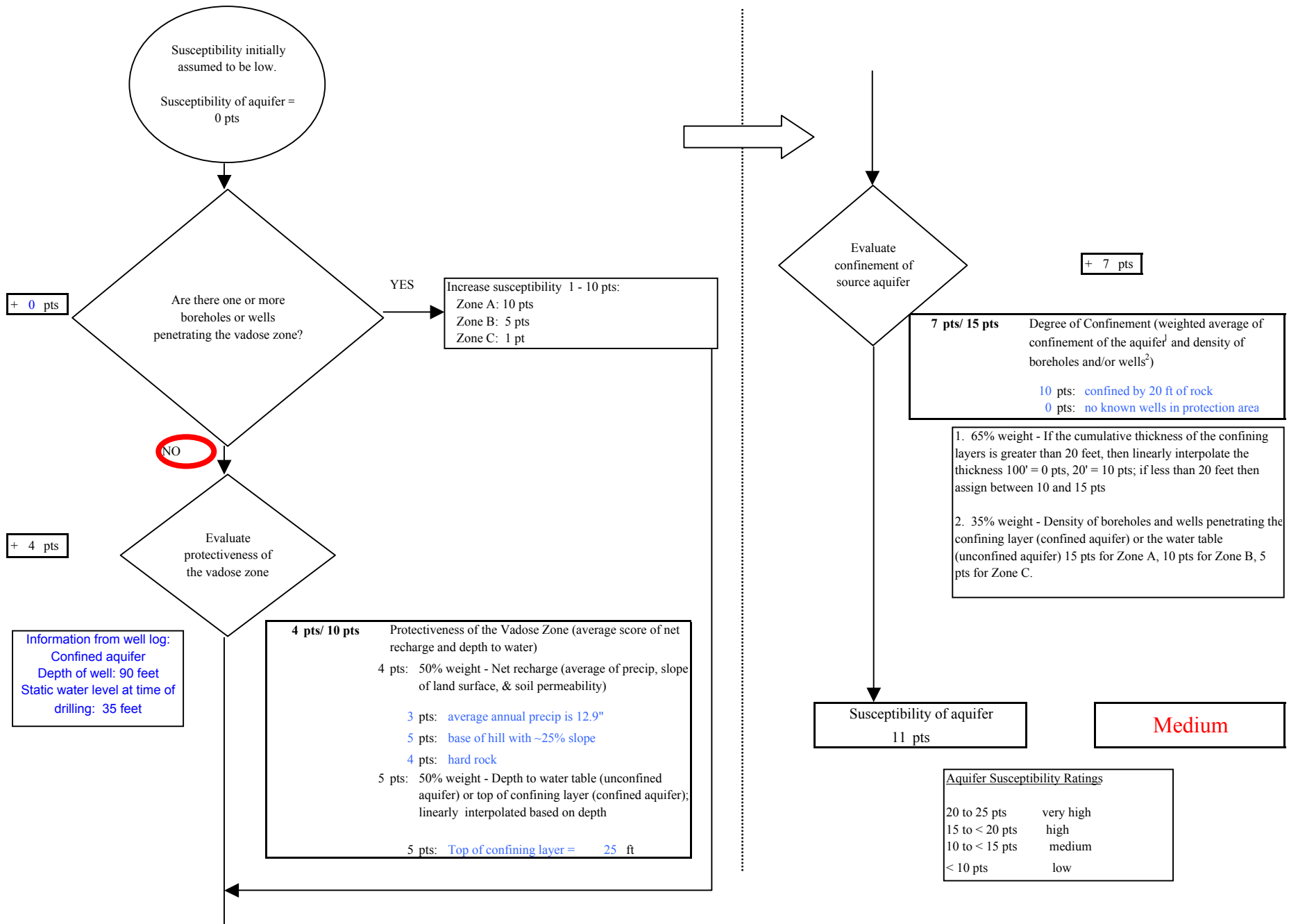
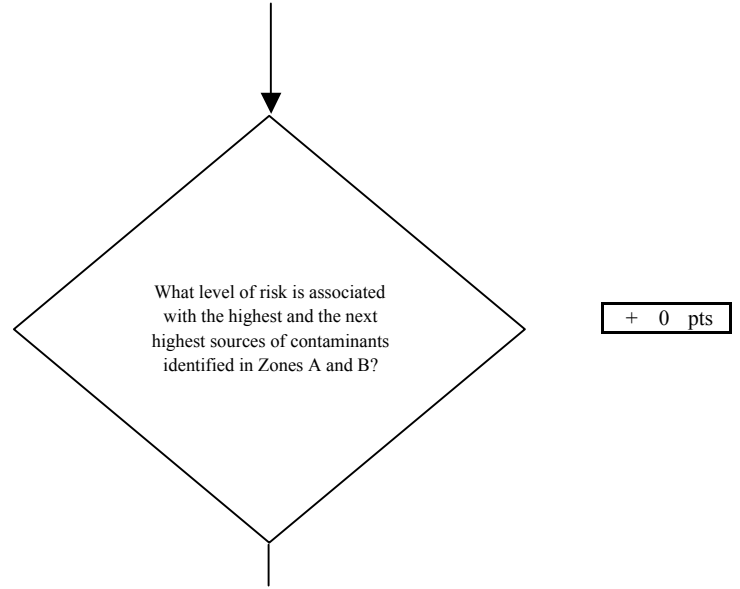
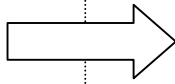
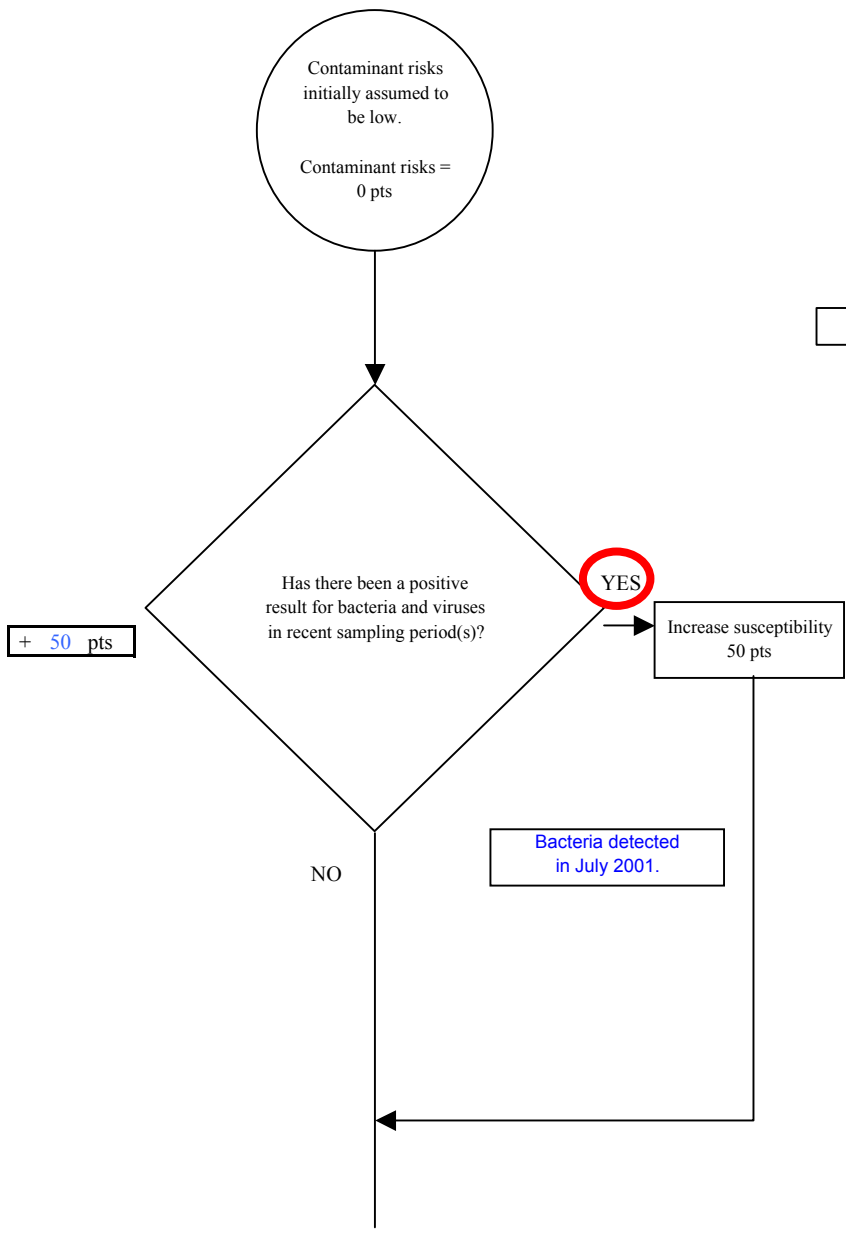


Chart 3. Contaminant risks for *Lost Lake Boy Scout Camp - Bacteria & Viruses*



Risk Rankings for Contaminant Sources Identified in Zones A and B

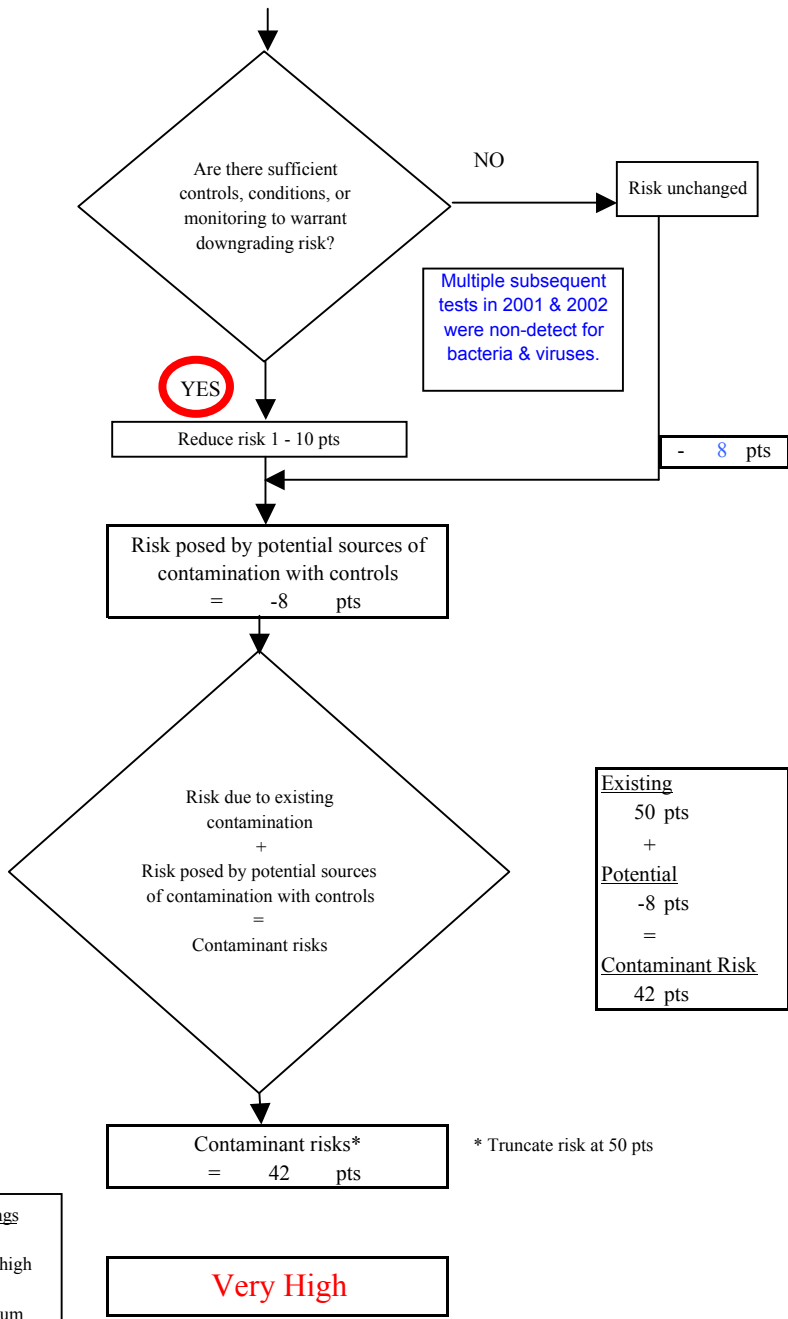
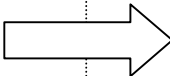
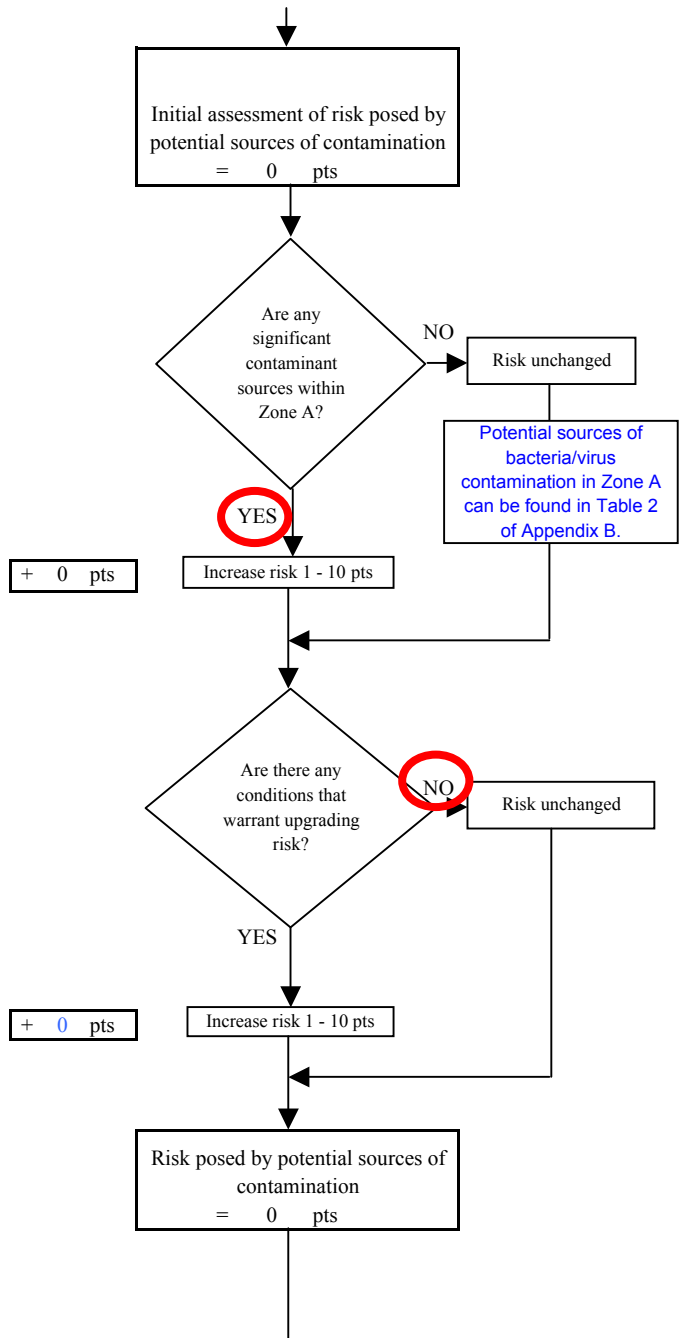
| | Zone A | Zone B | Total |
|--------------|--------|--------|-------|
| Very High(s) | 0 | 0 | 0 |
| High(s) | 0 | 0 | 0 |
| Medium(s) | 0 | 0 | 0 |
| Low(s) | 0 | 0 | 0 |

| | LOW 10 pts | MEDIUM 20 pts | HIGH 30 pts | VERY HIGH 40 pts |
|------------------|--------------------------|-------------------------|-------------------------|----------------------------|
| LOW | ≥ 10 sources + 10 pts | ≥ 10 sources + 5 pts | ≥ 20 sources + 5 pts | ---- |
| MEDIUM | ---- | ≥ 2 sources + 5 pts | ≥ 5 sources + 5 pts | ≥ 10 sources + 5 pts |
| HIGH | ---- | ---- | ≥ 1 source + 10 pts | ≥ 2 sources + 10 pts |
| VERY HIGH | ---- | ---- | ---- | ≥ 1 source + 10 pts |

Matrix Score 0

Note: Septic systems, sewerlines, and roads are each assigned a risk ranking for each individual contaminant source in the CSI. The VA, however, counts these contaminant sources as a group and assigns a calculated number of either "lows" or "mediums" based on the density.

Chart 3. Contaminant risks for Lost Lake Boy Scout Camp - Bacteria & Viruses



| Contaminant Risk Ratings | |
|--------------------------|-----------|
| 40 to 50 pts | very high |
| 30 to < 40 pts | high |
| 20 to < 30 pts | medium |
| < 20 pts | low |

Chart 4. Vulnerability analysis for Lost Lake Boy Scout Camp - Bacteria & Viruses

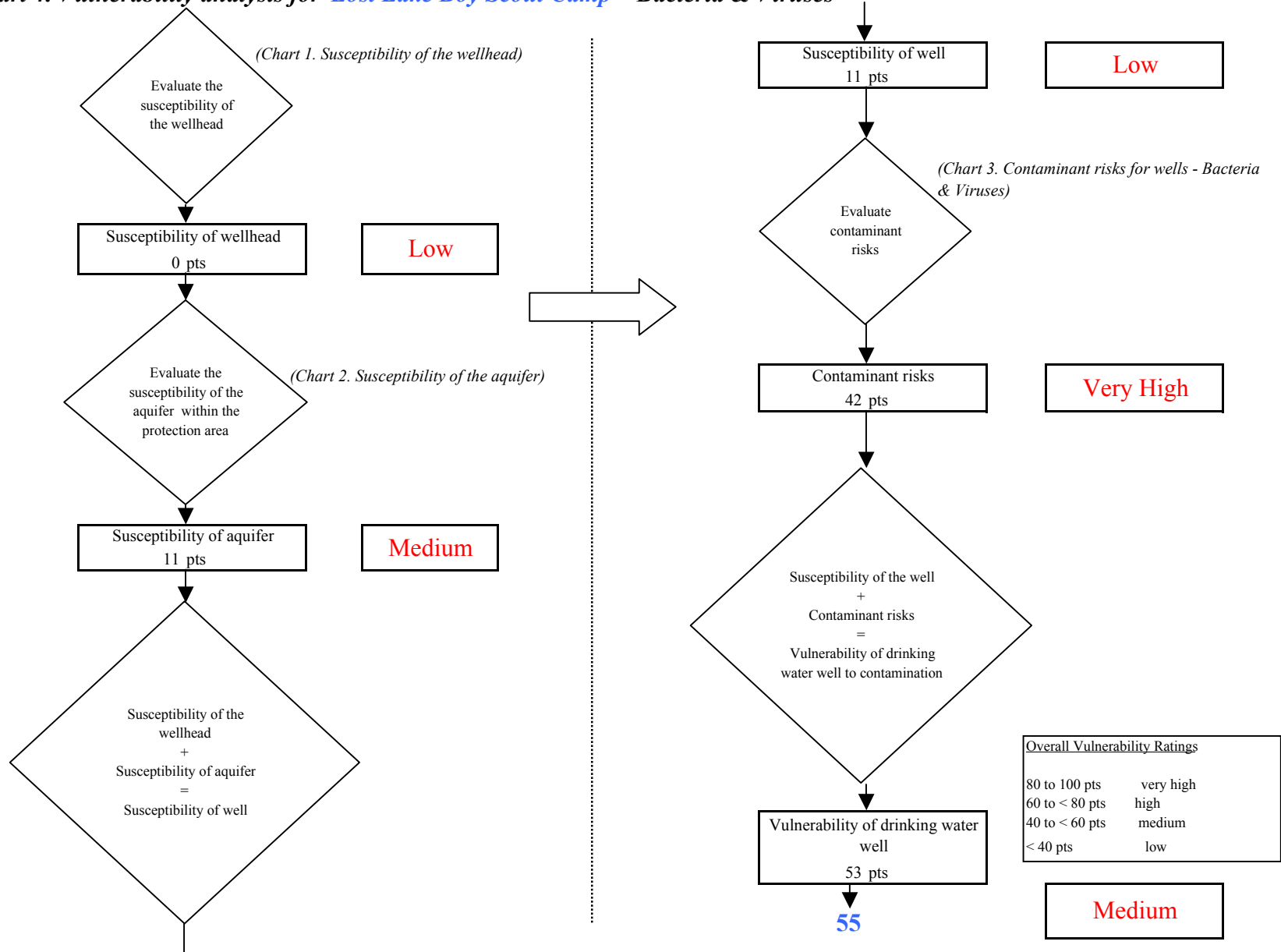


Chart 5. Contaminant risks for *Lost Lake Boy Scout Camp - Nitrates and Nitrites*

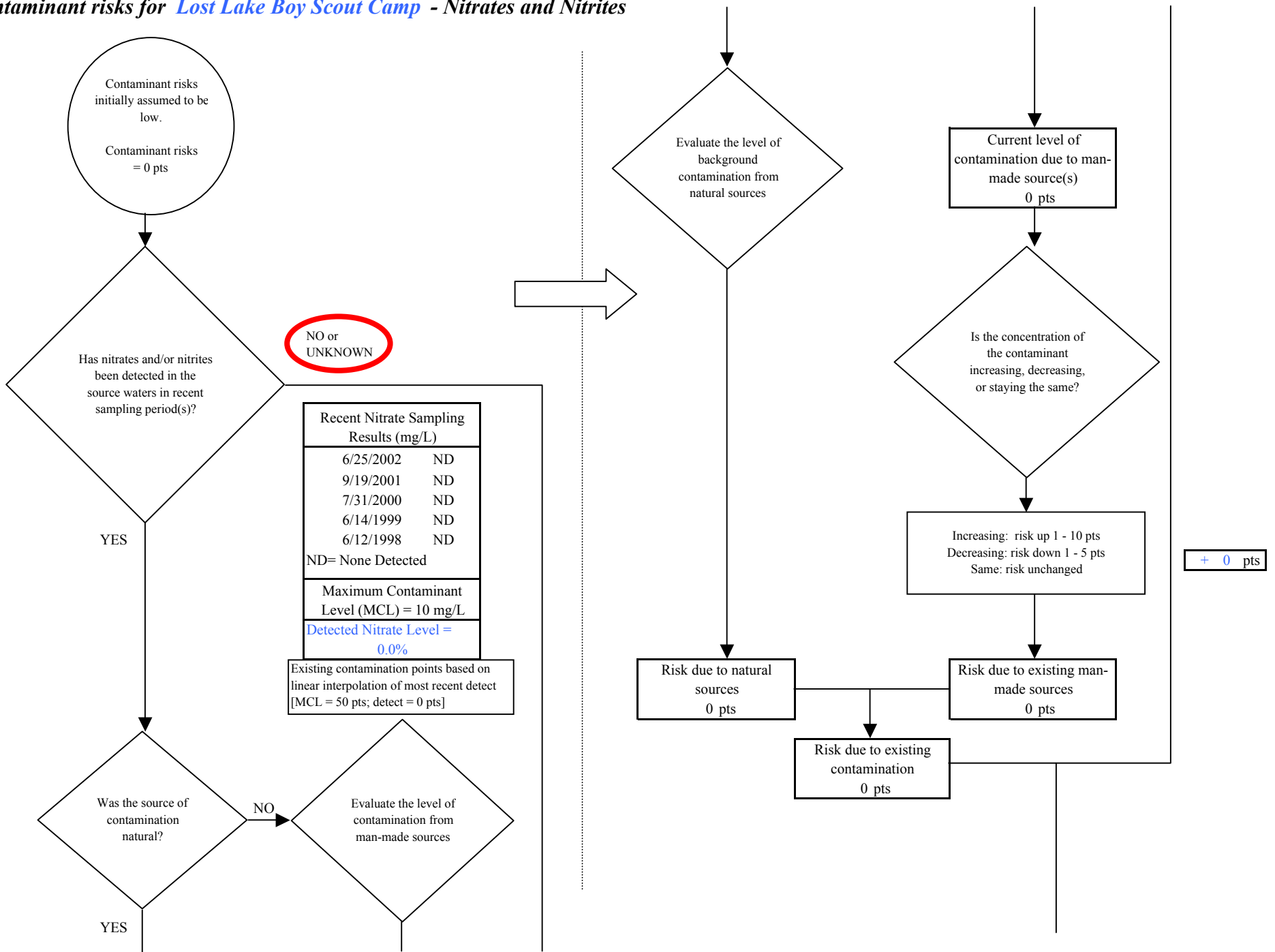


Chart 5. Contaminant risks for Lost Lake Boy Scout Camp - Nitrates and Nitrites

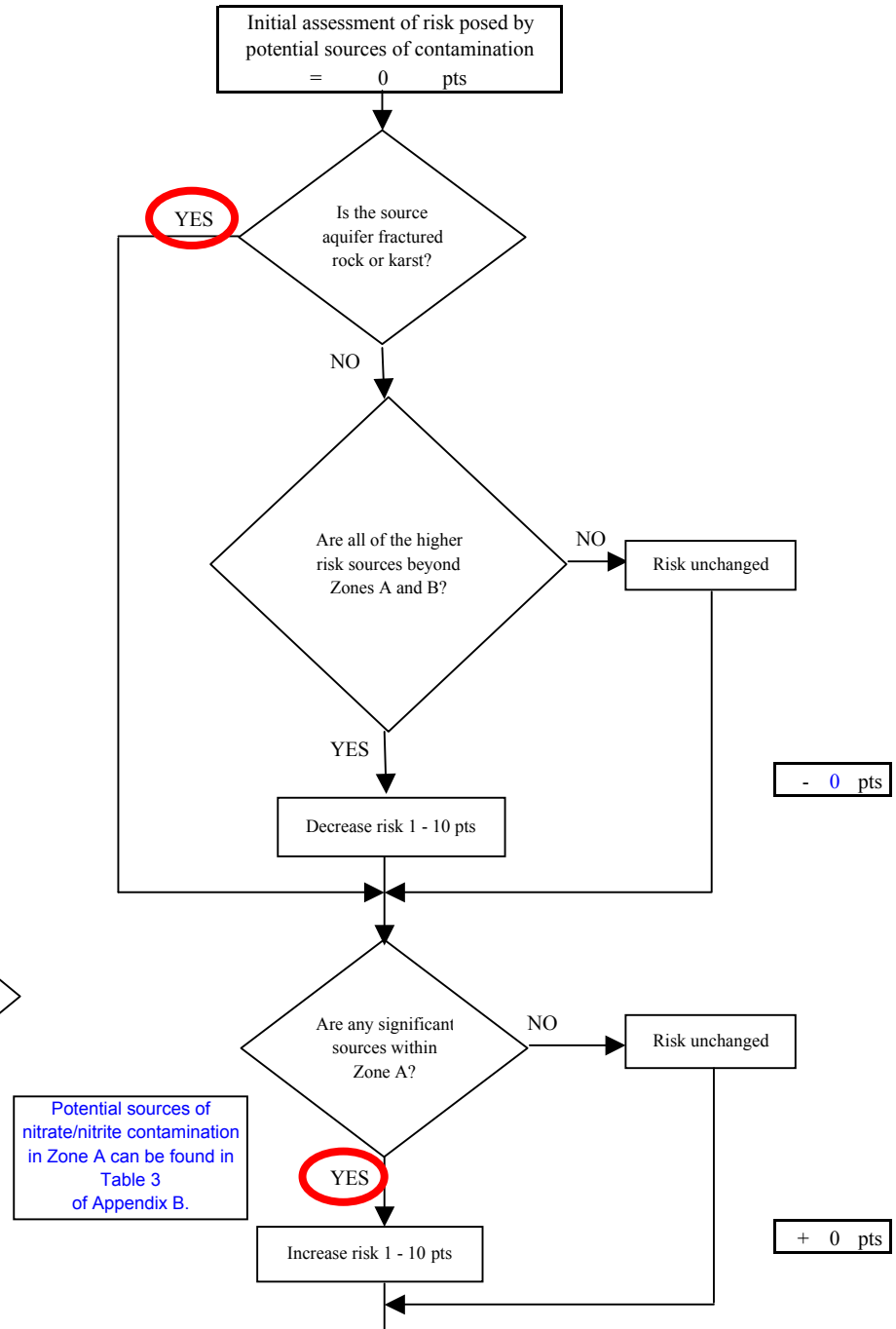
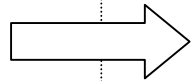
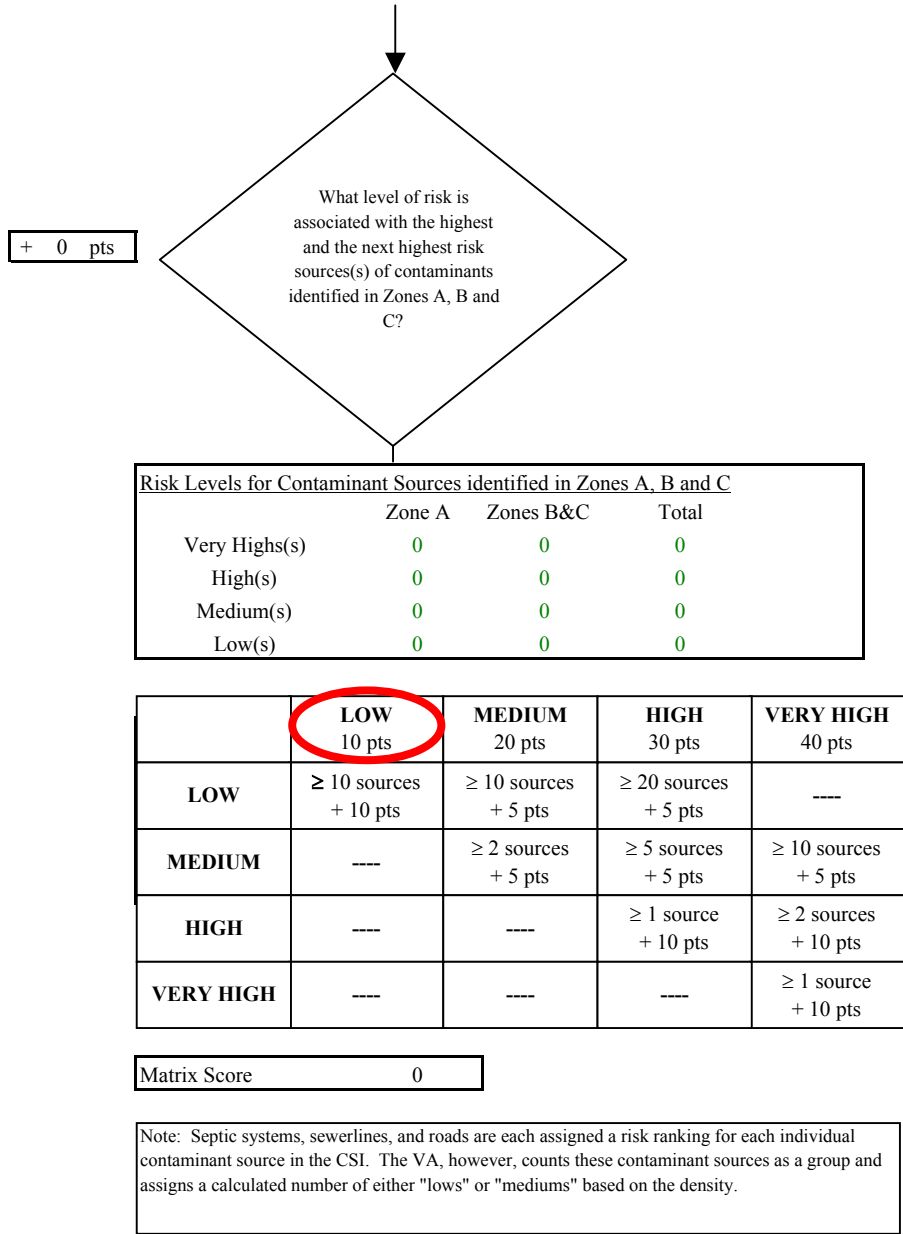


Chart 5. Contaminant risks for Lost Lake Boy Scout Camp - Nitrates and Nitrites

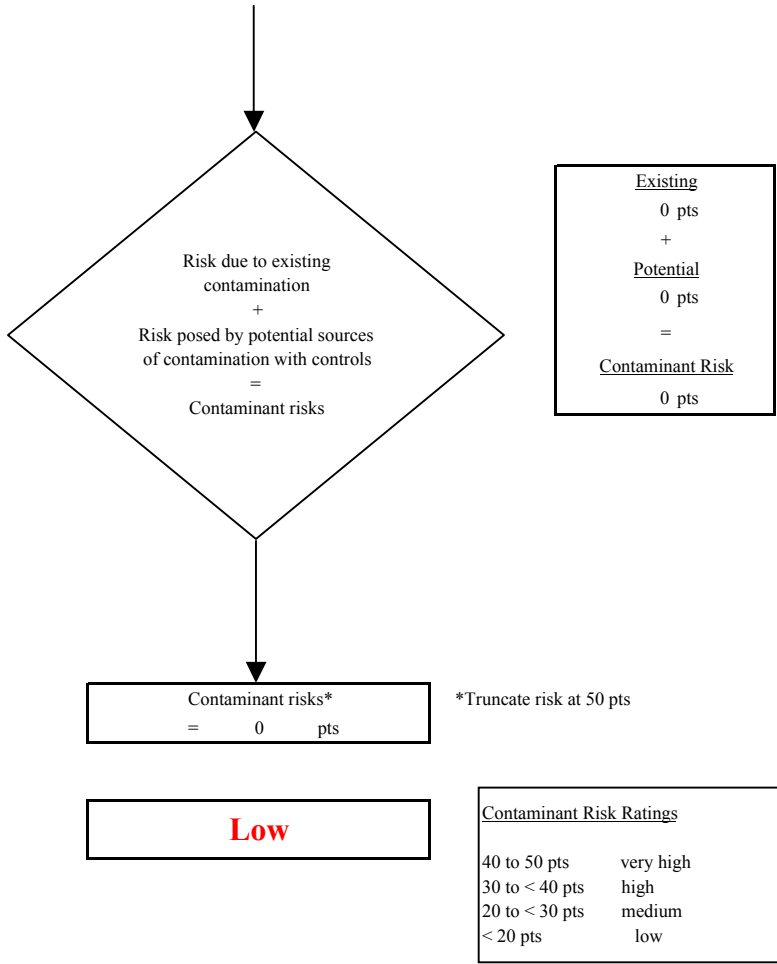
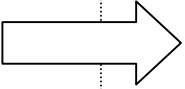
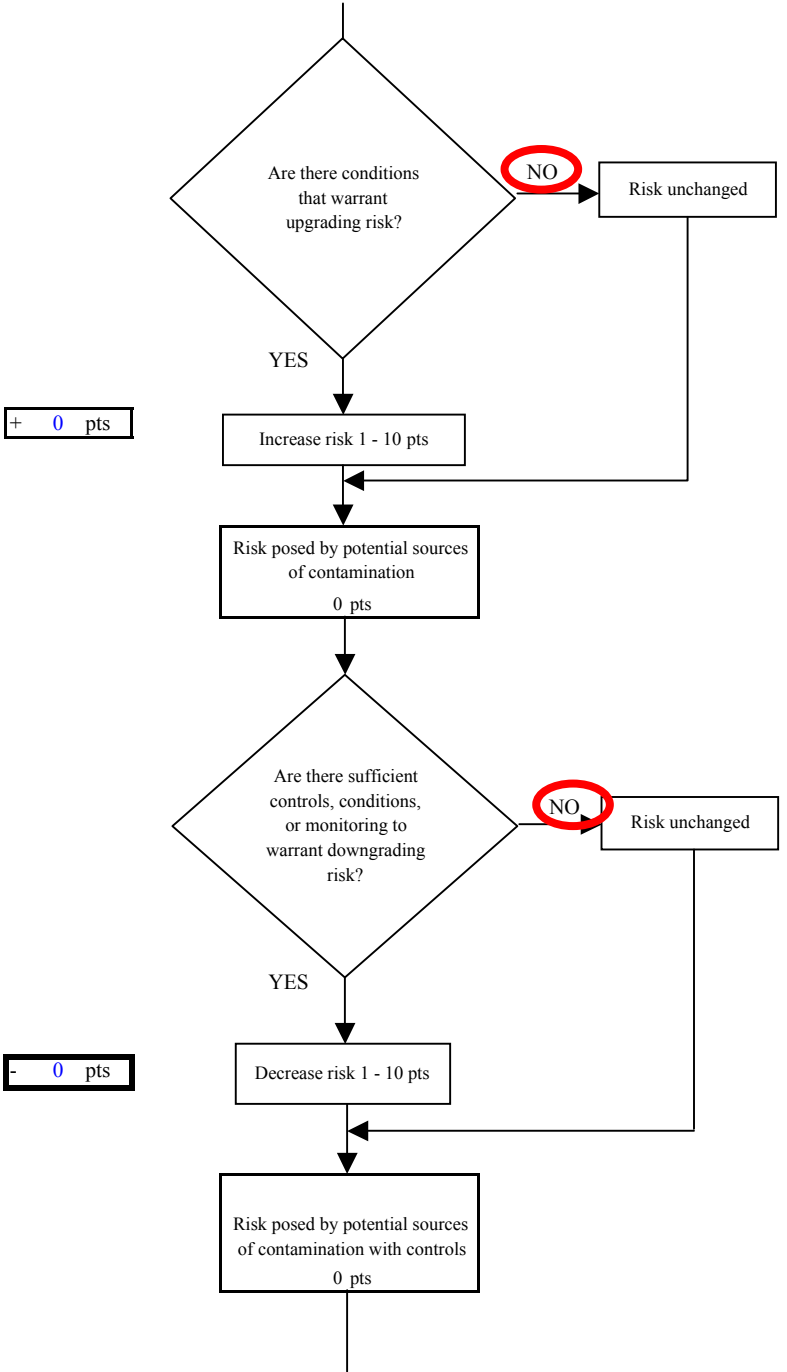


Chart 6. Vulnerability analysis for *Lost Lake Boy Scout Camp* - Nitrates and Nitrites

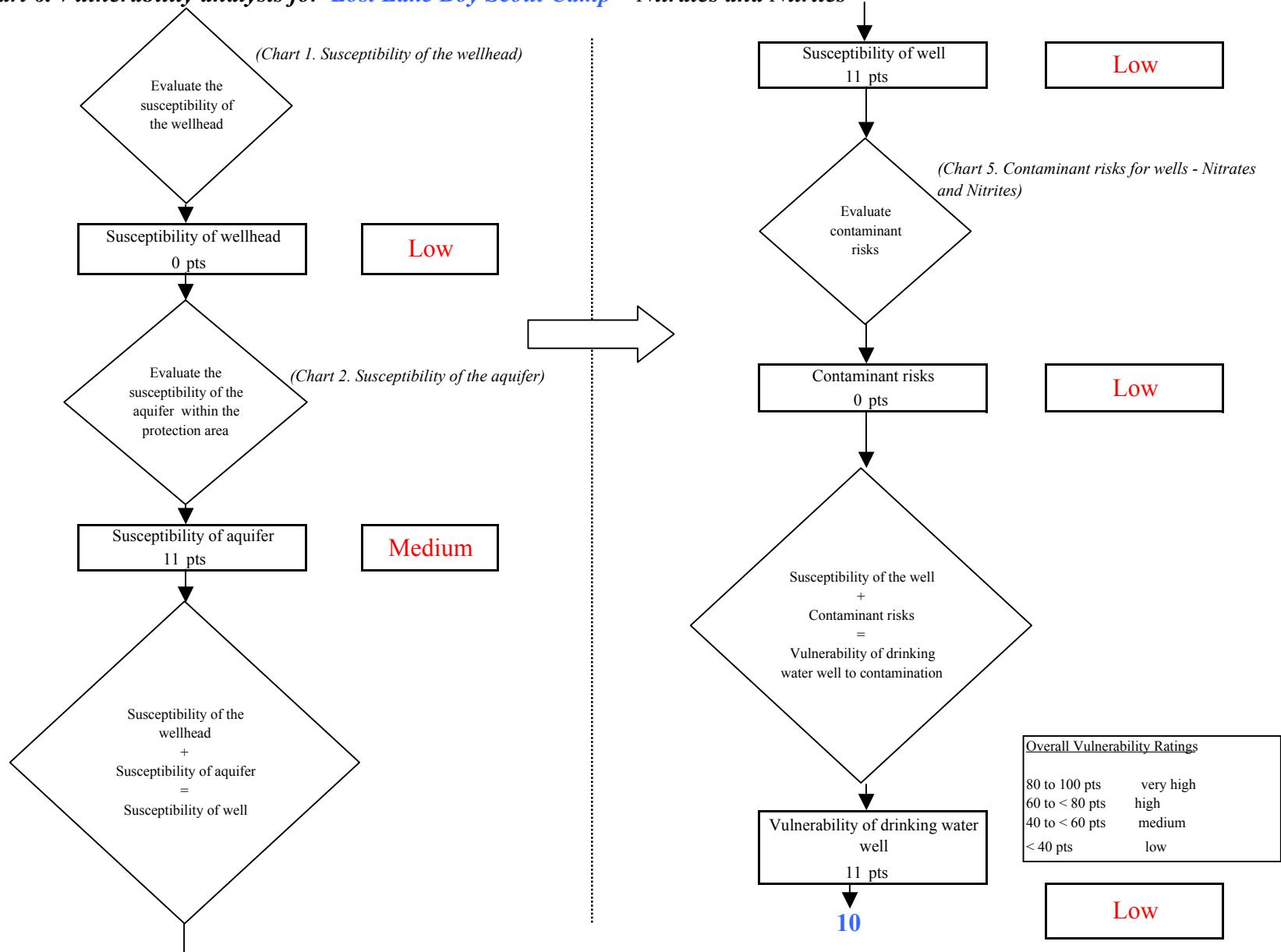


Chart 7. Contaminant risks for *Lost Lake Boy Scout Camp - Volatile Organic Chemicals*

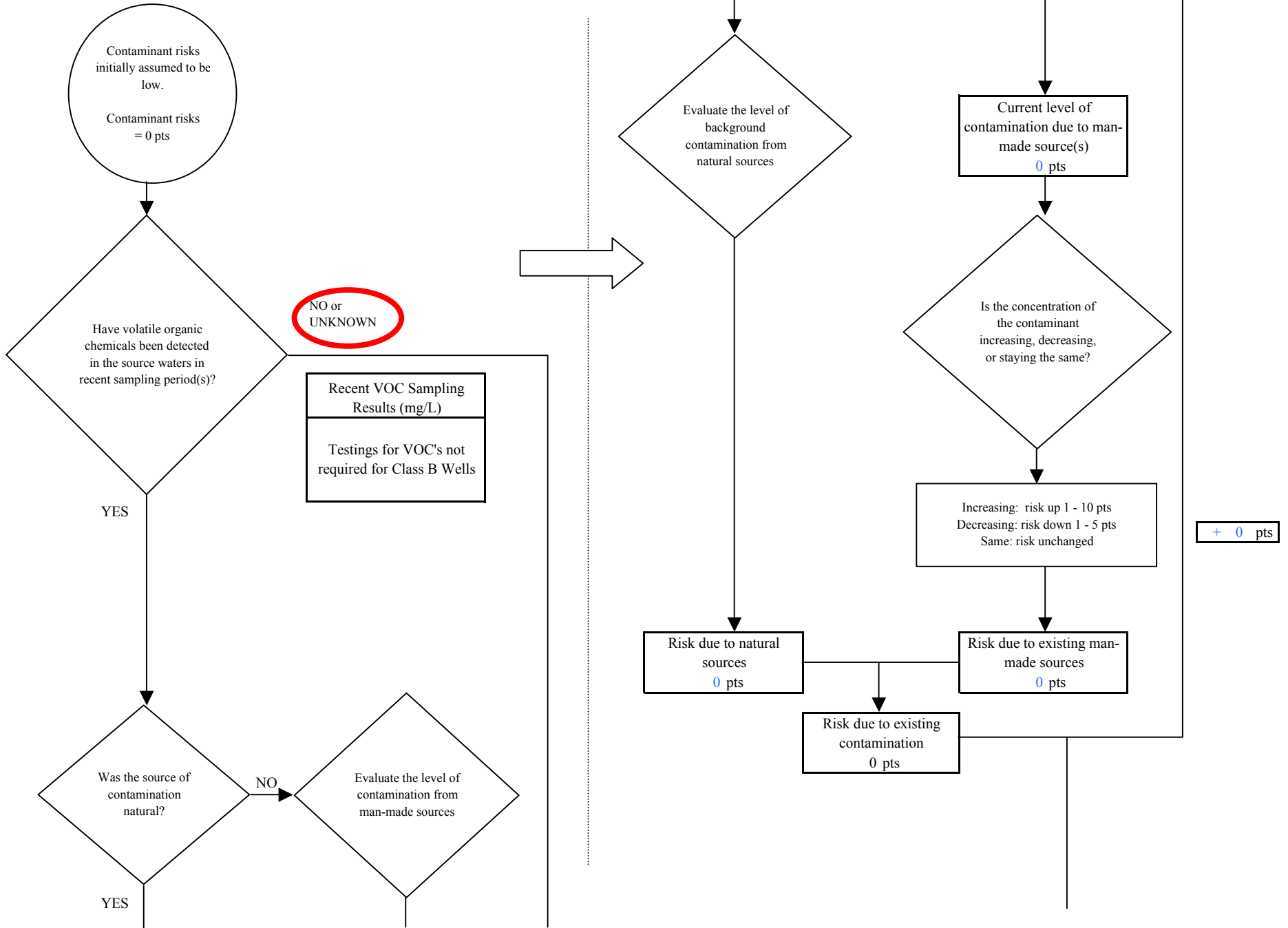
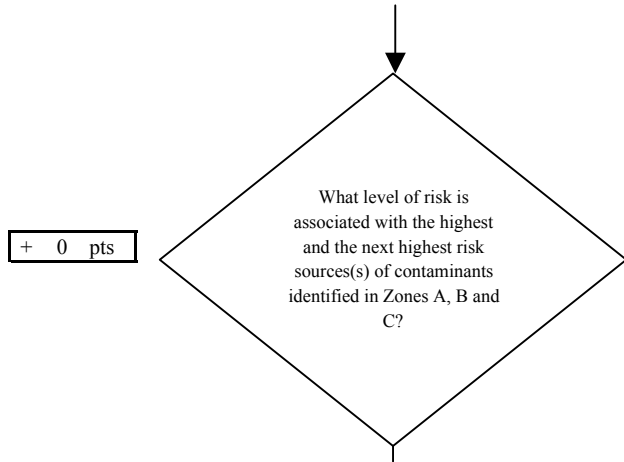


Chart 7. Contaminant risks for Lost Lake Boy Scout Camp - Volatile Organic Chemicals



| Risk Levels for Contaminant Sources identified in Zones A, B and C | | | |
|--|--------|-----------|-------|
| | Zone A | Zones B&C | Total |
| Very High(s) | 0 | 0 | 0 |
| High(s) | 0 | 0 | 0 |
| Medium(s) | 0 | 0 | 0 |
| Low(s) | 0 | 0 | 0 |

| | LOW 10 pts | MEDIUM 20 pts | HIGH 30 pts | VERY HIGH 40 pts |
|------------------|--------------------------|-------------------------|-------------------------|-------------------------|
| LOW | ≥ 10 sources + 10 pts | ≥ 10 sources + 5 pts | ≥ 20 sources + 5 pts | ---- |
| MEDIUM | ---- | ≥ 2 sources + 5 pts | ≥ 5 sources + 5 pts | ≥ 10 sources + 5 pts |
| HIGH | ---- | ---- | ≥ 1 source + 10 pts | ≥ 2 sources + 10 pts |
| VERY HIGH | ---- | ---- | ---- | ≥ 1 source + 10 pts |

Matrix Score 0

Note: Septic systems, sewerlines, and roads are each assigned a risk ranking for each individual contaminant source in the CSI. The VA, however, counts these contaminant sources as a group and assigns a calculated number of either "lows" or "mediums" based on the density.

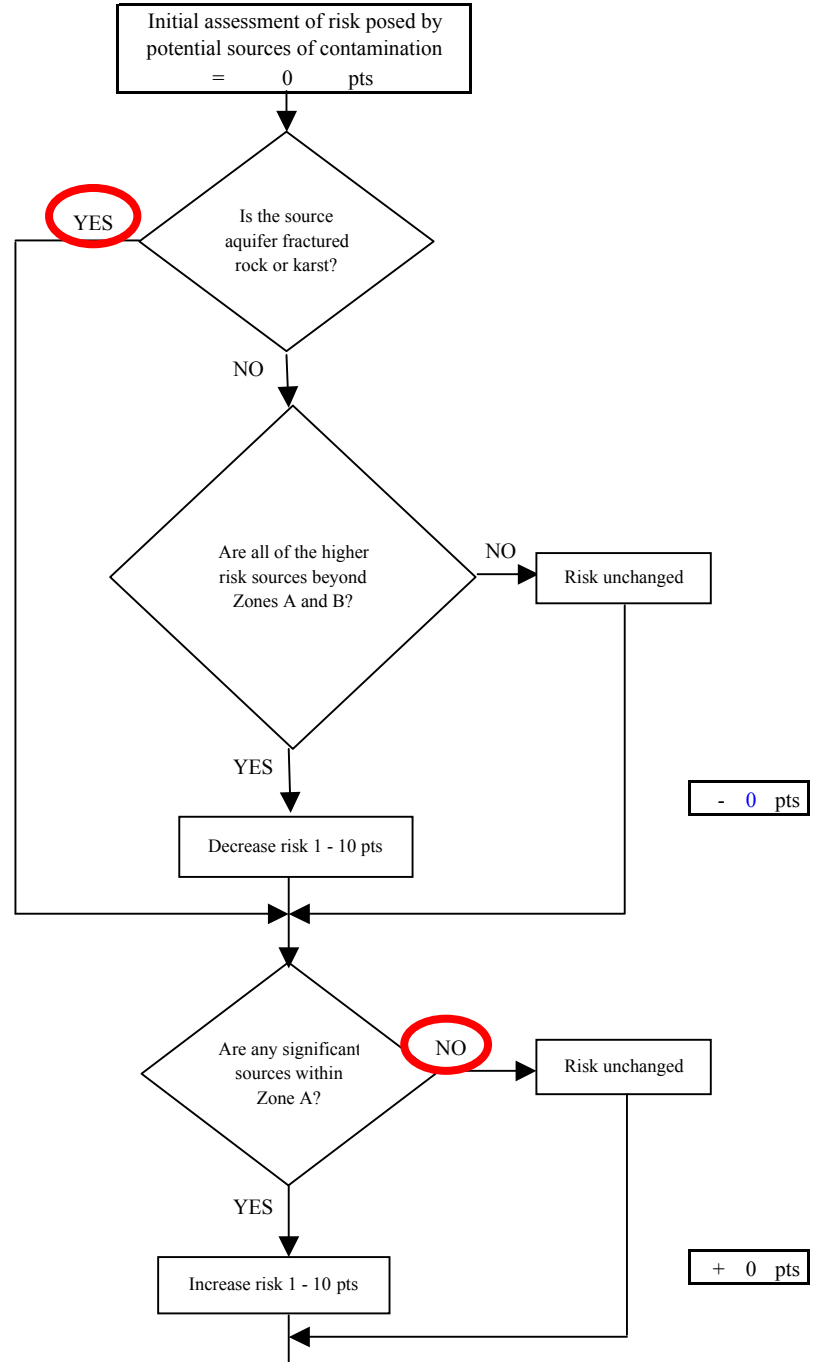
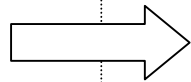


Chart 7. Contaminant risks for Lost Lake Boy Scout Camp - Volatile Organic Chemicals

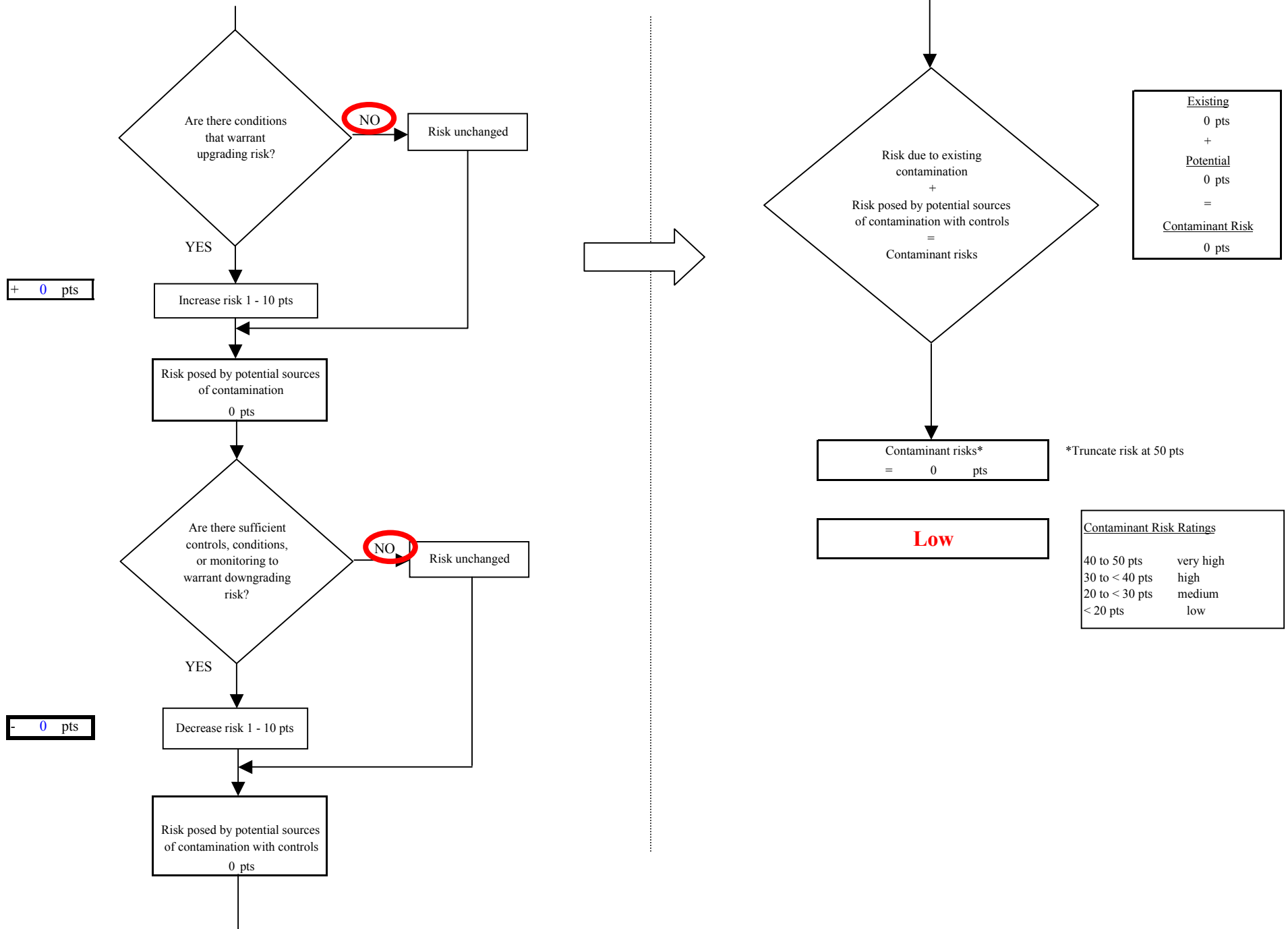


Chart 8. Vulnerability analysis for *Lost Lake Boy Scout Camp* - Volatile Organic Chemicals

