

Source Water Assessment

A Hydrogeologic Susceptibility and
Vulnerability Assessment for
Northstar Behavioral Health Drinking
Water System,
Palmer, Alaska
PWSID 220086

November 2006

DRINKING WATER PROTECTION REPORT Report 1594
Alaska Department of Environmental Conservation

Source Water Assessment for Northstar Behavioral Health Drinking Water System Palmer, Alaska PWSID 220086

November 2006

DRINKING WATER PROTECTION REPORT Report 1594

The Drinking Water Protection (DWP) section of the Drinking Water Program is producing Source Water Assessments in compliance with the Safe Drinking Water Act Amendments of 1996. Each assessment includes a delineation of the source water area, an inventory of potential and existing contaminant sources that may impact the water, a risk ranking for each of these contaminants, and an evaluation of the potential vulnerability of these drinking water sources.

These assessments are intended to provide public water systems owners/operators, communities, and local governments with the best available information that may be used to protect the quality of their drinking water. The assessments combine information obtained from various sources, including the U.S. Environmental Protection Agency, Alaska Department of Environmental Conservation (ADEC), public water system owners/operators, and other public information sources. The results of this assessment are subject to change if additional data becomes available. It is anticipated this assessment will be updated every five years to reflect any changes in the vulnerability and/or susceptibility of public drinking water source. If you have any additional information that may affect the results of this assessment, please contact the Program Coordinator of DWP, (907) 269-7521.

CONTENTS

	Page		Page
Executive Summary	1	Inventory of Potential and Existing Contaminant Sources	2
Northstar Behavioral Health Public Drinking Water System	1	Ranking of Contaminant Risks	2
Northstar Behavioral Health Protection Area	1	Vulnerability of Northstar Behavioral Health Drinking Water System	2
	1	References	6

TABLES

TABLE	1.	Definition of Zones	2
	2.	Susceptibility	3
	3.	Contaminant Risks	3
	3.	Overall Vulnerability	3

APPENDICES

APPENDIX	A.	Northstar Behavioral Health Drinking Water Protection Area (Map 1)	
	B.	Contaminant Source Inventory for Northstar Behavioral Health (Table 1)	
		Contaminant Source Inventory and Risk Ranking for Northstar Behavioral Health – Bacteria and Viruses (Table 2)	
		Contaminant Source Inventory and Risk Ranking for Northstar Behavioral Health – Nitrates/Nitrites (Table 3)	
		Contaminant Source Inventory and Risk Ranking for Northstar Behavioral Health – Volatile Organic Chemicals (Table 4)	
		Contaminant Source Inventory and Risk Ranking for Northstar Behavioral Health – Heavy Metals, Cyanide, and Other Inorganic Chemicals (Table 5)	
		Contaminant Source Inventory and Risk Ranking for Northstar Behavioral Health – Synthetic Organic Chemicals (Table 6)	
		Contaminant Source Inventory and Risk Ranking for Northstar Behavioral Health – Other Organic Chemicals (Table 7)	
	C.	Northstar Behavioral Health Drinking Water Protection Area and Potential and Existing Contaminant Sources (Map 2)	

Source Water Assessment for Northstar Behavioral Health Source of Public Drinking Water, Palmer, Alaska

Drinking Water Protection Alaska Department of Environmental Conservation

EXECUTIVE SUMMARY

This source water assessment provides an evaluation of the vulnerability of the public water system serving the Northstar Behavioral Health to potential contamination. This Class A (community) water system consists of one well off of Clark-Wolverine Road in Palmer. The well received a natural susceptibility rating of **Low**. This rating is a combination of a susceptibility rating of **Low** for the actual wellhead and a **Medium** rating for the aquifer in which the well is drawing water from. Identified potential and current sources of contamination for the Northstar Behavioral Health public water system include: injection wells, septic systems, quarries, and roads. These are considered as sources of bacteria and viruses, nitrates and/or nitrites, volatile organic chemicals (VOCs), heavy metals, cyanide, and other inorganic chemicals, synthetic organic chemicals (SOCs), and other organic chemicals (OOCs). Combining the natural susceptibility of the well with the contaminant risk, the public water system for Northstar Behavioral Health received an overall vulnerability rating of **High** for heavy metals, cyanide, and other inorganic chemicals, **Medium** for VOCs, nitrates and/or nitrites, and bacteria and viruses; and **Low** for OOCs, and SOCs.

NORTHSTAR BEHAVIORAL HEALTH PUBLIC DRINKING WATER SYSTEM

Northstar Behavioral Health public water system is a Class A (community) consisting of one well off of Clark-Wolverine Road in Palmer.

The Matanuska-Susitna Valley is floored with unconsolidated deposits, chiefly glacial drift that represents several episodes of glacial advances and retreats. The drift includes till, outwash stream deposits, and estuarine and lake deposits.

Physiographic features formed by these deposits in or adjacent to the study area include end moraine, lateral moraines, eskers, crevasse fillings, and other pitted features, river terraces, outwash floodplains and an extensive estuarine flat (Trainer, 1960).

The glacial till and bedrock form aquifers of minor importance. The chief hydrologic significance of the till is in confining the artesian aquifer. Generally, the till is poorly permeable, although locally thin layers of

sand may yield small quantities of water. Till that is present at or near the land surface in much of the area makes the acquisition of shallow groundwater difficult. The bedrock is poorly permeable. It yields water only from fractures, whose location and frequency cannot be easily predicted.

The chief aquifers are composed of outwash sand and gravel laid down by melt-water streams or in lakes. The outwash deposits are of two chief forms. The first consists of sheet-like deposits that lie just beneath the ground surface. These deposits range in thickness from a few feet to more than 100 feet. They typically rest on till or bedrock. The water in these deposits is unconfined. The other outwash deposits are buried beneath till. They are known to be as much as 50 to 60 feet thick, and probably are considerably thicker in some places. They commonly contain confined, or artesian, groundwater. Well logs and data from pumping tests suggest that outwash sand and gravel form a continuous or nearly continuous sheet in an area of more than 10 square miles north and west of Palmer (Jakola et al, 1991).

In the Mat-Su Valley, groundwater is primarily recharged by snowmelt and precipitation infiltrating both directly and also from the infiltration into the foothill slopes of the Talkeetna and Chugach Mountains. In addition, aquifers may be recharged by streams where surface water percolates into surrounding permeable sediments (losing reaches of streams). This is the case for the water-table aquifers in the terrace south of Palmer and in the Bodenburg Butte area, which receive underground flow from the Matanuska River. Groundwater flow in the confined aquifers is generally from the north and north-northwest. The direction of groundwater flow in the upper unconfined aquifer is more variable due to the influence from surficial topography as well as its close connection with surface water bodies (Trainer, 1960).

The Northstar Behavioral Health public water system serves 20 residents and 12 non-residents through 1 service connections.

NORTHSTAR BEHAVIORAL HEALTH DRINKING WATER PROTECTION AREA

The pathways most likely for surface contamination to reach the groundwater are identified as the first step in determining a drinking water system's risk. These

areas are determined by looking at the characteristics of the soil, groundwater, aquifer, and well.

The most probable area for contamination to reach the drinking water well is the area that contributes water to the well, the groundwater capture zone. The groundwater capture zone is located in the area circling the well (the area influenced by pumping) and also the area of the water table upgradient of the well, usually forming a parabola shape.

There are many different methods for calculating the size of capture zones. Drinking Water Protection (DWP) uses a combination of two simple groundwater flow equations, the Thiem and uniform flow equations for all groundwater wells screened in unconsolidated material. The orientation of the capture zone is then drawn using a water table elevation map (if available) or a land surface elevation map of the area. The capture zone calculated by the DWP is an estimate using the available information and resources, and may differ slightly from the actual capture zone.

The parameters used to calculate the shape of this capture zone are general for the whole alluvial plain and were obtained from various United States Geological Survey (USGS) reports, area well logs, and the Groundwater textbook by Freeze and Cherry (Freeze and Cherry, 1979).

Because of uncertainties and changing site conditions, a factor of safety is added to the groundwater capture zone to form the drinking water protection area for the well.

The protection areas established for wells are usually separated into two zones, limited by the watershed. These zones correspond to times-of-travel (TOT) of the water moving through the aquifer to the well (plus the factor of safety).

The following is a summary of the two zones for wells and the calculated time-of-travel for each:

Table 1. Definition of Zones

Zone	Definition
A	Several months travel time
B	Less than 2 years time-of-travel

The time of travel for contaminants within the water varies with their unique physical and chemical characteristics.

The drinking water protection area outlined for the Northstar Behavioral Health on Map 1 of Appendix A will serve as the focus for voluntary protection efforts.

INVENTORY OF POTENTIAL AND EXISTING CONTAMINANT SOURCES

Drinking Water Protection (DWP) has completed an inventory of potential and existing sources of contamination within the Northstar Behavioral Health protection area. This inventory was completed through a search of agency records and other publicly available information. Potential drinking water contaminants are found within agricultural, residential, commercial, and industrial areas, but can also occur within areas that have little or no development.

For the basis of all Class A public water system assessments, six categories of drinking water contaminants were inventoried. They include:

- Bacteria and viruses;
- Nitrates and/or nitrites;
- Volatile organic chemicals;
- Heavy metals, cyanide, and other inorganic chemicals;
- Synthetic organic chemicals; and
- Other organic chemicals.

The sources are displayed on Map 2 of Appendix C and summarized in Table 1 of Appendix B.

RANKING OF CONTAMINANT RISKS

Once the potential and existing sources of contamination have been identified, they are each assigned a ranking according to what type and level of risk they represent. Ranking of contaminant risks for a “potential” or “existing” source of contamination is a combination of toxicity and volume associated with that source. Rankings include:

- Low
- Medium
- High
- Very High

Tables 2 through 7 in Appendix B contain the ranking of inventoried potential and existing sources of contamination with respect to bacteria and viruses, nitrates and/or nitrites, volatile organic chemicals, heavy metals, cyanide and other inorganic chemicals, synthetic organic chemicals and other organic chemical

VULNERABILITY OF NORTHSTAR BEHAVIORAL HEALTH DRINKING WATER SYSTEM

The vulnerability of public drinking water systems to regulated contaminants is determined by assessing the susceptibility of the wellhead, the susceptibility of the aquifer and the potential contaminant sources identified within the protection area.

The Drinking Water Protection developed a vulnerability assessment tool that assigns a vulnerability risk ranking based upon various factors associated with the well, aquifer and potential and existing contaminants identified within the protection area.

Factors contributing to the susceptibility of the wellhead are: whether the sanitary seal in place, protection from flooding, and if the well casing is properly grouted.

The wellhead for the Northstar Behavioral Health received a **Low** susceptibility rating. The most recent sanitary survey (8/11/2004) indicates the well is capped with a sanitary seal and the land surface is sloped away from the well; however, the well is not grouted. A sanitary seal prevents potential contaminant from entering the well while sloping of the land surface and grouting help to prevent potential contaminants from traveling down the outside of the well casing.

Factors contributing to the susceptibility of the aquifer are: whether the aquifer is confined or unconfined, whether the well is completed in unconsolidated or fractured bedrock, whether wells and bore holes are penetrating the aquifer and, if applicable, the confining layer.

The aquifer the Northstar Behavioral Health well is completed in received a **Medium** susceptibility rating. The aquifer is fairly well protected by several layers of hardpan. Unfortunately the well is perforated above and below these layers, which almost negates their protective ability. Table 2 summarizes the Susceptibility scores and ratings for Northstar Behavioral Health.

Table 2: Susceptibility

	Rating
Susceptibility of the Wellhead	Low
Susceptibility of the Aquifer	Medium
Natural Susceptibility	Low

The Contaminant Risk has been derived from an evaluation of the routine sampling results of the water system and the presence of potential sources of contamination. Contaminant risks to a drinking water source depend on the type and distribution of contaminant sources.

Table 3 summarizes the Contaminant Risks for each category of drinking water contaminants.

Table 3. Contaminant Risks

Category	Rating
Bacteria and Viruses	High
Nitrates and/or Nitrites	Very High
Volatile Organic Chemicals	Very High
Heavy Metals, Cyanide, and Other Inorganic Chemicals	Very High
Synthetic Organic Chemicals	Low
Other Organic Chemicals	Low

Finally, an overall vulnerability is determined for each water system by combining each of the contaminant risk scores with the natural susceptibility score:

$$\begin{aligned} &\text{Natural Susceptibility} \\ &+ \\ &\text{Contaminant Risks} \\ &= \\ &\text{Vulnerability of the} \\ &\text{Drinking Water Source to Contamination} \end{aligned}$$

Table 4 contains the overall ratings for each of the six categories of drinking water contaminants.

Table 4. Overall Vulnerability

Category	Rating
Bacteria and Viruses	Medium
Nitrates and Nitrites	Medium
Volatile Organic Chemicals	Medium
Heavy Metals, Cyanide, and Other Inorganic Chemicals	High
Synthetic Organic Chemicals	Low
Other Organic Chemicals	Low

Bacteria and Viruses

Class V injection wells in the protection area represent the greatest risk for bacteria and viruses to the drinking water well. For a complete listing of potential sources for bacteria and virus contamination please see Table 2 in Appendix B.

Only a small amount of bacteria and viruses are required to endanger public health. Coliforms are found naturally in the environment and although they aren't necessarily a health threat, it is an indicator of other potentially harmful bacteria in the water, more specifically, fecal coliforms and E. coli which only come from human and animal fecal waste (EPA, 2006). Harmful bacteria can cause diarrhea, cramps, nausea, headaches, or other symptoms (EPA, 2006). No

samples have tested positive for coliforms in recent history.

After combining the contaminant risk for bacteria and viruses with the natural susceptibility of the well, the overall vulnerability of the well to contamination is medium.

Nitrates and Nitrites

Class V injection wells in the protection area also represent the greatest risk to nitrates and nitrites for this source of public drinking water. For a complete listing of potential sources for nitrate and nitrite contamination please see Table 3 in Appendix B.

Nitrates are very mobile, moving at approximately the same rate as water. Nitrates have been detected in recent sampling history at 2% of their maximum contaminant level (MCL = 10mg/L). In greater quantities nitrates have been known to cause 'blue baby syndrome' in infants (EPA 2006).

After combining the contaminant risk for nitrates and nitrites with the natural susceptibility of the well, the overall vulnerability of the well to contamination is medium.

Volatile Organic Chemicals

Roads represent the greatest identified risk for volatile organic chemical contamination to the well. For a complete listing of potential sources for bacteria and virus contamination please see Table 4 in Appendix B.

Total trihalomethanes (TTHMs) have been detected within source waters at 59% of their maximum contaminant level (MCL = 0.08). TTHMs are a disinfectant byproduct that enters the water system after treatment, in greater concentrations they may cause liver, kidney or central nervous system problems, and may increase the risk of cancer (EPA 2006).

After combining the contaminant risk for volatile organic chemicals with the natural susceptibility of the well, the overall vulnerability of the well to contamination is medium.

Heavy Metals, Cyanide, and Other Inorganic Chemicals

Roads represent the greatest risk for inorganic chemicals to the well. For a complete listing of potential sources for bacteria and virus contamination please see Table 5 in Appendix B.

Arsenic was detected at 103% of its maximum contaminant level (MCL). The MCL for arsenic is 0.01 mg/L. In greater quantities, arsenic is known to cause skin damage, problems with circulatory systems, and may create an increased risk of developing cancer (EPA, 2006).

After combining the contaminant risk for heavy metals, cyanide and other inorganic chemicals with the natural susceptibility of the well, the overall vulnerability of the well to contamination is high.

Synthetic Organic Chemicals

Septic systems represent the greatest risk for synthetic organic chemicals to the well. For a complete listing of potential sources for bacteria and virus contamination please see Table 6 in Appendix B.

Synthetic organic chemicals have not been sampled for in this water system.

After combining the contaminant risk for synthetic organic chemicals with the natural susceptibility of the well, the overall vulnerability of the well to contamination is low.

Other Organic Chemicals

Septic systems represent the greatest risk for other organic chemicals to the well. For a complete listing of potential sources for bacteria and virus contamination please see Table 7 in Appendix B.

Other organic chemicals have not been sampled for in this water system.

After combining the contaminant risk for synthetic organic chemicals with the natural susceptibility of the well, the overall vulnerability of the well to contamination is low.

REFERENCES

Freeze, R.A. and Cherry, J.A., 1979. Groundwater. Prentice-Hall, Englewood Cliffs, NJ.

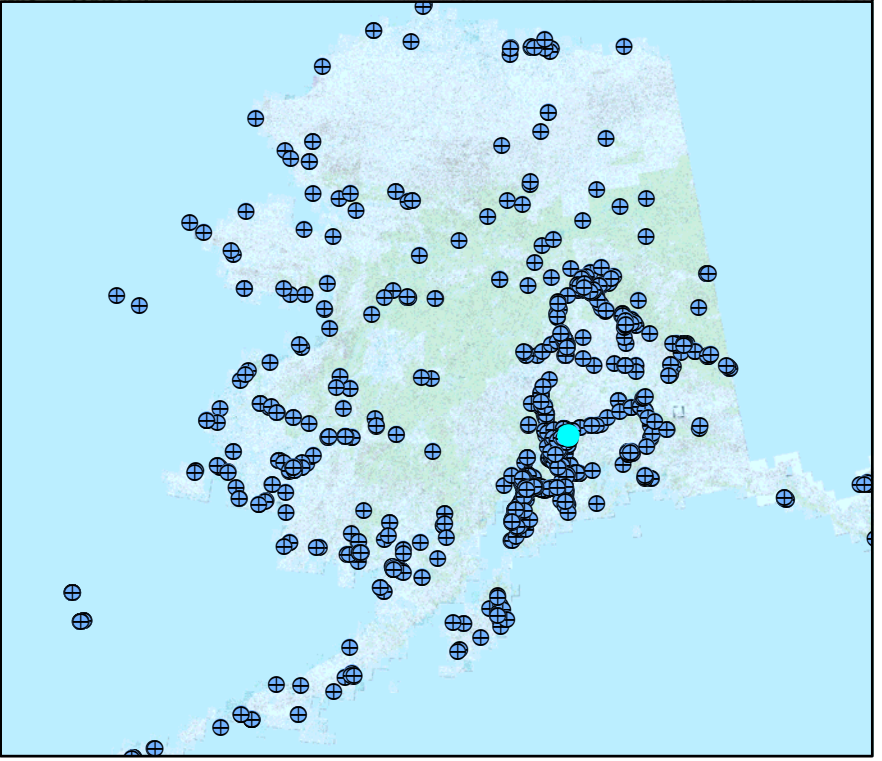
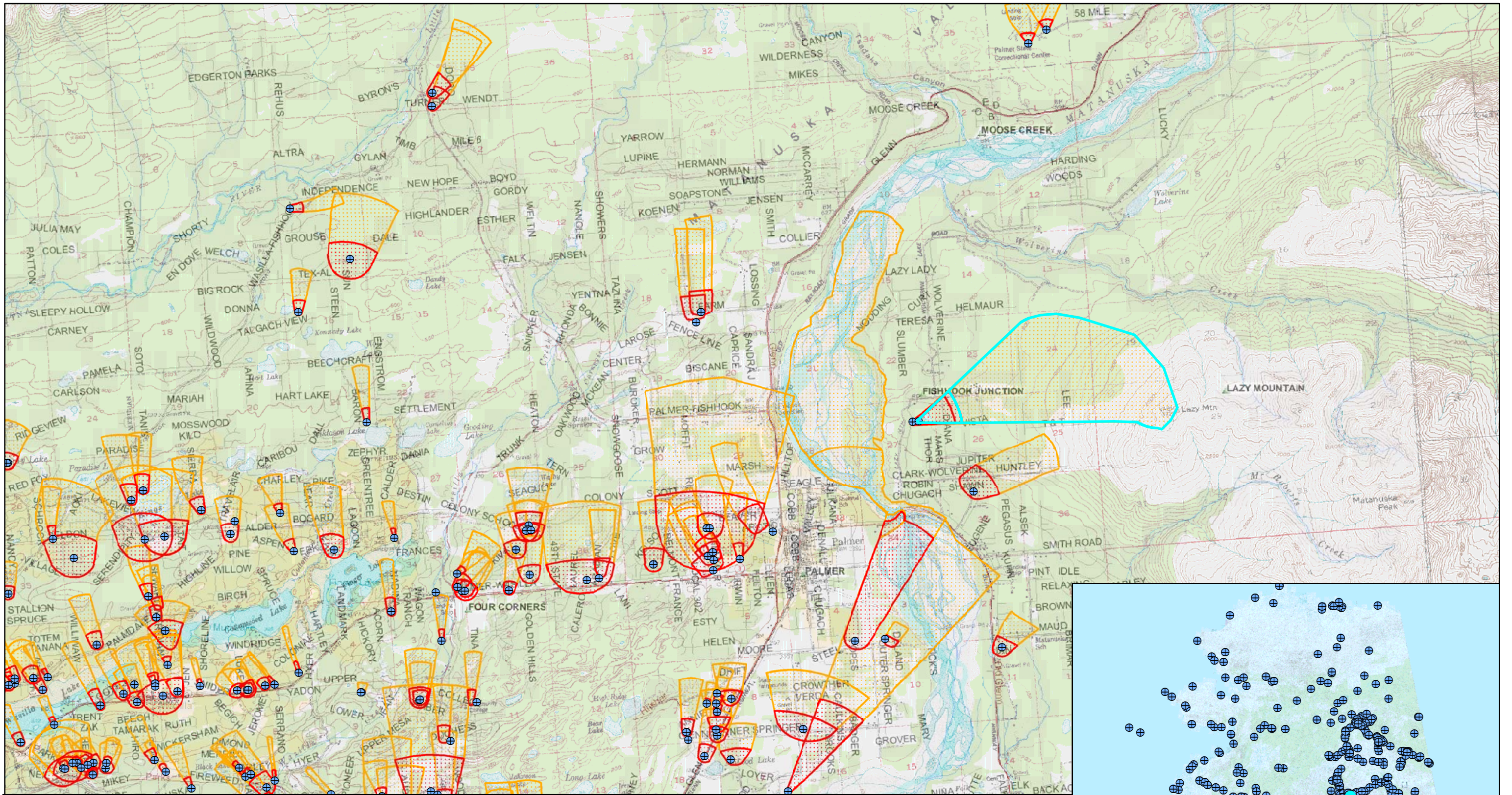
United States Environmental Protection Agency (EPA), 2006 [WWW document]. URL
<http://www.epa.gov/safewater/mcl.html>.

Jakola, J.B., Munter, J.A., and Evans, J.G., 1991, Ground-water resources of the Palmer-big Lake area, Alaska: a conceptual model. Division of Geological & Geophysical Surveys Reported of Investigations 90-4, State of Alaska Department of Natural Resources, Fairbanks, AK.

Trainer, F.W., 1960, Geology and Groundwater Resources, Matanuska Valley, Alaska, U.S. Geological Survey Water Supply Paper 1494 U.S. Printing Office, Washington, D.C.

APPENDIX A

Northstar Behavioral Health Drinking Water Protection Area Location Map (Map 1)



Map 1- Northstar Behavioral Health and Surrounding Water Systems

PWSID: 220086.001

Alaska Department of Environmental Conservation

Alaska Drinking Water Protection Program

0 1:73,778 17,500 Feet

Data Sources:
 Mat-Su Borough: Roads and parcels
 Potential Sources of Contamination: ADEC

- Public Water Sources
- Zone A Protection Area
- Zone B Protection Area

APPENDIX B

Contaminant Source Inventory and Risk Ranking for Northstar Behavioral Health (Tables 1-7)

Table 1

**Contaminant Source Inventory for
North Star Behavioral Health System**

PWSID 220086.001

Contaminant Source Type	Contaminant Source ID	CS ID tag	Zone	Map Number	Comments
Septic systems (serves one single-family home)	R02	R02-1-4	A	2	4 residential septic systems identified in Zone A
Injection wells (Class V) Large-Capacity Septic System (Drainfield Disposal Method)	D10	D10-1-2	B	2	2 large capacity septic systems identified in Zone B
Quarries (sand, gravel, rock, other?)	E10	E10-1	B		
Septic systems (serves one single-family home)	R02	R02-5-24	B	2	24 residential septic systems identified in Zone B.
Highways and roads, dirt/gravel	X24	X24-1-9	B	2	9 roads identified in Zone B.

Table 2

*Contaminant Source Inventory and Risk Ranking for
North Star Behavioral Health System
Sources of Bacteria and Viruses*

PWSID 220086.001

<i>Contaminant Source Type</i>	<i>Contaminant Source ID</i>	<i>CS ID tag</i>	<i>Zone</i>	<i>Risk Ranking for Analysis</i>	<i>Map Number</i>	<i>Comments</i>
Septic systems (serves one single-family home)	R02	R02-1-4	A	Low	2	4 residential septic systems identified in Zone A
Injection wells (Class V) Large-Capacity Septic System (Drainfield Disposal Method)	D10	D10-1-2	B	High	2	2 large capacity septic systems identified in Zone B
Septic systems (serves one single-family home)	R02	R02-5-24	B	Low	2	24 residential septic systems identified in Zone B.
Highways and roads, dirt/gravel	X24	X24-1-9	B	Low	2	9 roads identified in Zone B.

Table 3

*Contaminant Source Inventory and Risk Ranking for
North Star Behavioral Health System
Sources of Nitrates/Nitrites*

PWSID 220086.001

Contaminant Source Type	Contaminant Source ID	CS ID tag	Zone	Risk Ranking for Analysis	Map Number	Comments
Septic systems (serves one single-family home)	R02	R02-1-4	A	Low	2	4 residential septic systems identified in Zone A
Injection wells (Class V) Large-Capacity Septic System (Drainfield Disposal Method)	D10	D10-1-2	B	High	2	2 large capacity septic systems identified in Zone B
Quarries (sand, gravel, rock, other?)	E10	E10-1	B	Low		
Septic systems (serves one single-family home)	R02	R02-5-24	B	Low	2	24 residential septic systems identified in Zone B.
Highways and roads, dirt/gravel	X24	X24-1-9	B	Low	2	9 roads identified in Zone B.

Table 4

*Contaminant Source Inventory and Risk Ranking for
North Star Behavioral Health System
Sources of Volatile Organic Chemicals*

PWSID 220086.001

Contaminant Source Type	Contaminant Source ID	CS ID tag	Zone	Risk Ranking for Analysis	Map Number	Comments
Septic systems (serves one single-family home)	R02	R02-1-4	A	Low	2	4 residential septic systems identified in Zone A
Injection wells (Class V) Large-Capacity Septic System (Drainfield Disposal Method)	D10	D10-1-2	B	Low	2	2 large capacity septic systems identified in Zone B
Quarries (sand, gravel, rock, other?)	E10	E10-1	B	Low		
Septic systems (serves one single-family home)	R02	R02-5-24	B	Low	2	24 residential septic systems identified in Zone B.
Highways and roads, dirt/gravel	X24	X24-1-9	B	Low	2	9 roads identified in Zone B.

Table 5

*Contaminant Source Inventory and Risk Ranking for
North Star Behavioral Health System
Sources of Heavy Metals, Cyanide and Other Inorganic Chemicals*

PWSID 220086.001

<i>Contaminant Source Type</i>	<i>Contaminant Source ID</i>	<i>CS ID tag</i>	<i>Zone</i>	<i>Risk Ranking for Analysis</i>	<i>Map Number</i>	<i>Comments</i>
Septic systems (serves one single-family home)	R02	R02-1-4	A	Low	2	4 residential septic systems identified in Zone A
Injection wells (Class V) Large-Capacity Septic System (Drainfield Disposal Method)	D10	D10-1-2	B	Low	2	2 large capacity septic systems identified in Zone B
Septic systems (serves one single-family home)	R02	R02-5-24	B	Low	2	24 residential septic systems identified in Zone B.
Highways and roads, dirt/gravel	X24	X24-1-9	B	Low	2	9 roads identified in Zone B.

Table 6

*Contaminant Source Inventory and Risk Ranking for
North Star Behavioral Health System
Sources of Synthetic Organic Chemicals*

PWSID 220086.001

<i>Contaminant Source Type</i>	<i>Contaminant Source ID</i>	<i>CS ID tag</i>	<i>Zone</i>	<i>Risk Ranking for Analysis</i>	<i>Map Number</i>	<i>Comments</i>
Septic systems (serves one single-family home)	R02	R02-1-4	A	Low	2	4 residential septic systems identified in Zone A
Injection wells (Class V) Large-Capacity Septic System (Drainfield Disposal Method)	D10	D10-1-2	B	Low	2	2 large capacity septic systems identified in Zone B
Septic systems (serves one single-family home)	R02	R02-5-24	B	Low	2	24 residential septic systems identified in Zone B.

Table 7

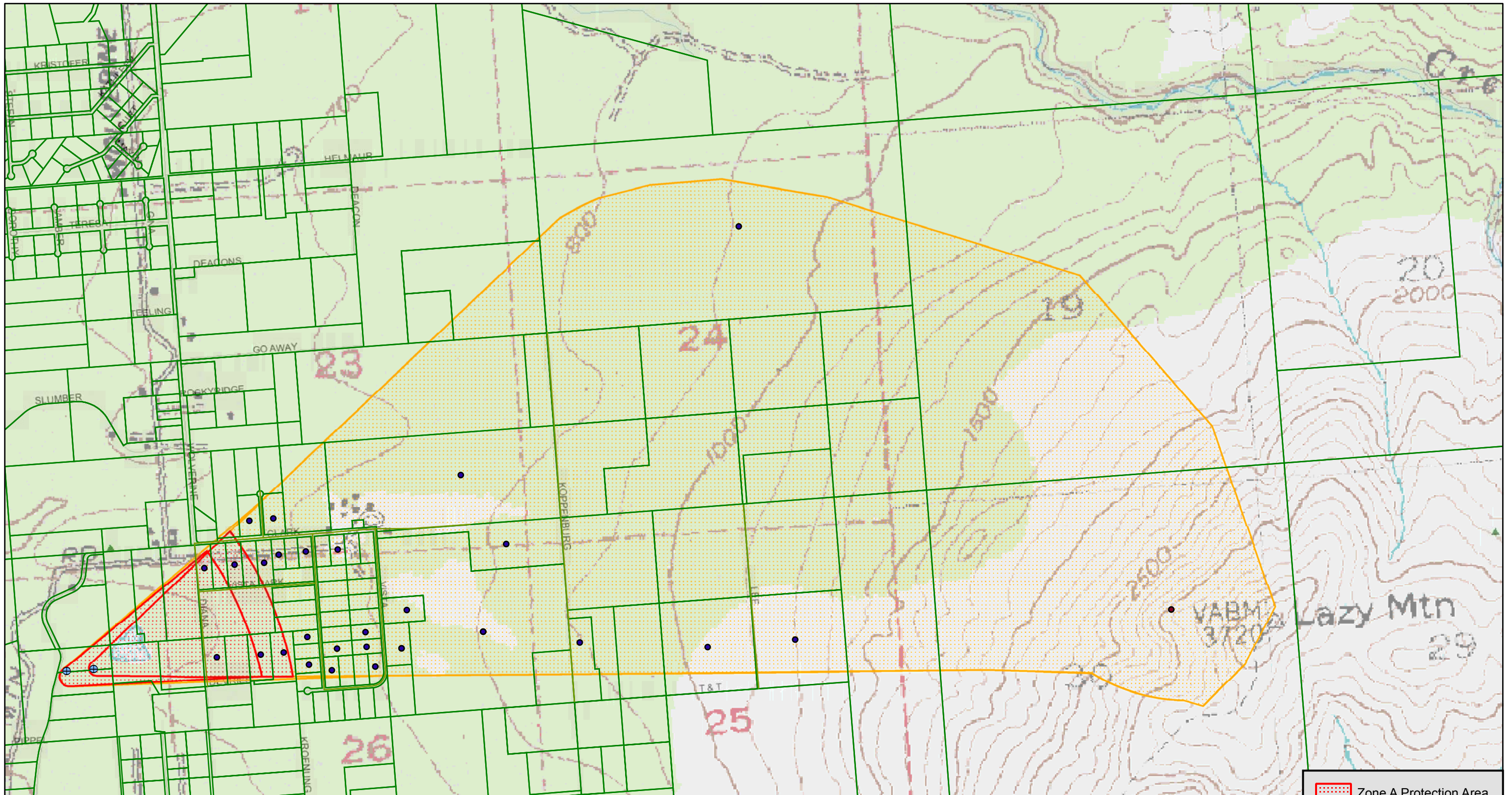
*Contaminant Source Inventory and Risk Ranking for
North Star Behavioral Health System
Sources of Other Organic Chemicals*

PWSID 220086.001

Contaminant Source Type	Contaminant Source ID	CS ID tag	Zone	Risk Ranking for Analysis	Map Number	Comments
Septic systems (serves one single-family home)	R02	R02-1-4	A	Low	2	4 residential septic systems identified in Zone A
Injection wells (Class V) Large-Capacity Septic System (Drainfield Disposal Method)	D10	D10-1-2	B	Low	2	2 large capacity septic systems identified in Zone B
Quarries (sand, gravel, rock, other?)	E10	E10-1	B	Low		
Septic systems (serves one single-family home)	R02	R02-5-24	B	Low	2	24 residential septic systems identified in Zone B.
Highways and roads, dirt/gravel	X24	X24-1-9	B	Low	2	9 roads identified in Zone B.

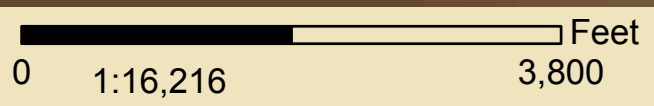
APPENDIX C

Northstar Behavioral Health Drinking Water Protection Area and Potential and Existing Contaminant Sources (Map 2)



Map 2- Northstar Behavioral Health Potential Contaminant Sources

PWSID: 220086.001



Data Sources:
 Mat-Su Borough: Roads and parcels
 Potential Sources of Contamination: ADEC

	Zone A Protection Area
	Zone B Protection Area
	Parcels
	Public Water Sources
	Septics
	Mines
	Roads