

Hydrogeologic Susceptibility and Vulnerability Assessment for Matanuska Assembly of God Church Drinking Water Well, Palmer, Alaska

DRINKING WATER PROTECTION PROGRAM REPORT 95

September 2001

Hydrogeologic Susceptibility and Vulnerability Assessment for Matanuska Assembly of God Church Drinking Water Well, Palmer, Alaska

By Michael Baxter, B.E.S.T. Resource

DRINKING WATER PROTECTION PROGRAM REPORT 95

CONTENTS

	Page		Page
Executive Summary	1	Inventory of Potential and Existing	
Introduction	1	Contaminant Sources	3
Description of the Matanuska – Susitna		Ranking of Contaminant Risks	3
Valley, Alaska	2	Vulnerability of Matanuska Assembly of God	
Matanuska Assembly of God Public Water Source	2	Drinking Water Source	4
Assessment/Protection Area for Matanuska Assembly		Summary	5
of God Drinking Water Source	3	References Cited	6

TABLES

TABLE	1. Natural Susceptibility - Susceptibility of the Wellhead and Aquifer to Contamination	4
	2. Contaminant Risks	5
	3. Overall Vulnerability of Matanuska Assembly of God Public Drinking Water Source to Contamination	5

ILLUSTRATIONS

FIGURE	1. Index map showing the location of Matanuska River Task Order Area	
--------	--	--

APPENDICES

APPENDIX	A. Matanuska Assembly of God Drinking Water Protection Area (Map 1)
	B. Contaminant Source Inventory for Matanuska Assembly of God (Table 1) Contaminant Source Inventory and Risk Ranking for Matanuska Assembly of God – Bacteria and Viruses (Table 2) Contaminant Source Inventory and Risk Ranking for Matanuska Assembly of God – Nitrates/Nitrites (Table 3) Contaminant Source Inventory and Risk Ranking for Matanuska Assembly of God – Volatile organic chemicals (Table 4)
	C. Matanuska Assembly of God Drinking Water Protection Area and Potential and Existing Contaminant Sources (Map 2)
	D. Vulnerability Analysis for Contaminant Source Inventory and Risk Ranking for Matanuska Assembly of God Public Drinking Water Source (Chart 1 – Chart 8 and Table 1 – Table 3)

Hydrogeologic Susceptibility and Vulnerability Assessment for Matanuska Assembly of God Public Drinking Water Source, Palmer, Alaska

By Michael Baxter, B.E.S.T. Resource

Drinking Water Protection Program Alaska Department of Environmental Conservation

EXECUTIVE SUMMARY

The Matanuska Assembly of God is a Class B (transient/noncommunity) drinking water source consisting of one well. Identified potential and current sources of contaminants for Matanuska Assembly of God include: domestic lawns, and gardens, roads, sewer lines and septic systems. This identified potential and existing source of contamination is considered a source of bacteria and viruses, nitrates and/or nitrites, and volatile organic chemicals. Overall, Matanuska Assembly of God public water source received a vulnerability rating of **Medium** for bacteria and viruses, nitrates and/or nitrites, and volatile organic chemicals.

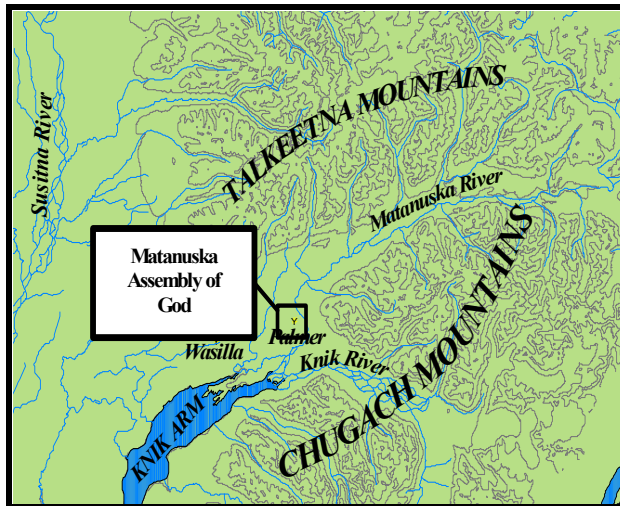


Figure 1. Index map showing the location of well assessment

INTRODUCTION

The purpose of this environmental assessment is to provide public water system owners/operators, communities, and local governments with information they can use to preserve the quality of Alaska's public drinking water supplies. This assessment was completed for the Matanuska Assembly of God source of public drinking water. This source consists of one

well in the Palmer area (Figures 1). This assessment, known under the Alaska Drinking Water Protection Program as the *Source Water Assessment*, has combined a review of the natural hydrogeologic sensitivity with potential and existing contaminant risks to arrive at an overall vulnerability of the drinking water source to contamination. This assessment has been completed as a basis for local voluntary protection efforts and to assist agencies in their efforts to reduce risk to this public drinking water supply.

DESCRIPTION OF THE PALMER-AREA, ALASKA

Location

The Matanuska-Susitna Valley is part of the lowland lying about 50 miles north of Anchorage in south-central Alaska. The well described in this report is part of the Matanuska River Task Order Area. This study area is roughly bounded on the north by the Talkeetna Mountains; on the west by Wasilla Creek; on the south by the Knik River; and on the east by the Chugach Mountains. The area covers approximately 150 square miles.

Climate

The climate of the Matanuska-Susitna Valley is the result of a combination of marine and continental influences. The climate is somewhat transitional in that it does not experience large daily and annual temperature fluctuations like those experienced in the interior of Alaska nor does it experience high amounts of precipitation typified by gulf coast regions. Mean annual precipitation is approximately 15 inches per year. On the average, the Valley receives a total snow accumulation of 58 inches per year. Precipitation generally increased inland toward the Talkeetna Mountains where annual precipitation may exceed 60 inches per year [Barnwell, George, Dearborn, Weeks, and Zenone, 1972]. Mean daily temperature ranges from 67° F during July to 5° F in January [Western Regional Climate Center, 2000].

Physiography and Groundwater Conditions

The Matanuska-Susitna Valley is bounded by rugged mountains that rise abruptly above its floor. The Chugach Mountains at the southern edge of the valley reach altitudes greater than 6300 feet. These mountains are composed primarily of metamorphosed sedimentary marine and volcanic rocks, and greenstone of Mesozoic age. Along the northern edge of the valley peaks in the Talkeetna Mountains reach altitudes of 3000 to 5000 feet. The Talkeetna Mountains are composed mainly of igneous rocks, chiefly granitic intrusives (Mesozoic?) and subordinate lavas and tuffs; Cretaceous and Tertiary sedimentary rocks form the south flank of the mountains. Although the altitude of the valley floor ranges from sea level at Knik Arm to 1000 feet at the base of Wishbone Hill, the local relief is commonly not more than 100 to 200 feet.

The area is drained by the Matanuska and Knik Rivers. These rivers are braided glacial outwash streams having wide floodplains. Drainage is poor in many interstream tracts resulting in large areas of swampy ground with shallow lakes occupying depressions.

The Matanuska-Susitna Valley is floored with unconsolidated deposits, chiefly glacial drift, that represents several episodes of glacial advances and retreats. The drift includes till, outwash stream deposits, and estuarine and lake deposits. Physiographic features formed by these deposits in or adjacent to the study area include end moraine, lateral moraines, eskers, crevasses fillings, and other pitted features, river terraces, outwash floodplains and an extensive estuarine flat.

The glacial till and bedrock form aquifers of minor importance. The chief hydrologic significance of the till is in confining the artesian aquifer. Generally, the till is poorly permeable, although locally thin layers of sand may yield small quantities of water. Till that is present at or near the land surface in much of the area makes the acquisition of shallow groundwater difficult. The bedrock also is poorly permeable. It yields water only from fractures, whose location and frequency cannot be easily predicted.

The chief aquifers are composed of outwash sand and gravel laid down by melt-water streams or in lakes. The outwash deposits are of two chief forms. The first consists of sheetlike deposits that lie just beneath the ground surface. These deposits range in thickness from a few feet to more than 100 feet. They typically rest on till of bedrock. The water in these deposits is unconfined. The other outwash deposits are buried beneath till. They are known to be as much as 50 to 60

feet thick, and probably are considerably thicker in some places. They commonly contain confined, or artesian, groundwater. Well logs and data from pumping tests suggest that outwash sand and gravel form a continuous or nearly continuous sheet in an area of more than 10 square miles north and west of Palmer.

Recharge of the groundwater is chiefly from precipitation but it is likely that only a small proportion of the annual precipitation reaches the water body. During very dry seasons conspicuous declines in of water levels occur in many wells. Along the mountain fronts, groundwater seeps from fractures in bedrock into the sediments. At these higher elevations, rain and snowmelt also enter the sediments. Lastly, aquifers may be recharged by streams where surface water percolates into surrounding permeable sediments (losing reaches of streams). This is the case for the water-table aquifers in the terrace south of Palmer and in the Bodenbergt Butte area, which receive underground flow from the Matanuska River. Groundwater flow in the confined aquifers is generally from the north and north-northwest. The direction of groundwater flow in the upper unconfined aquifer is more variable due to the influence from surficial topography as well as its close connection with surface water bodies.

MATANUSKA ASSEMBLY OF GOD PUBLIC WATER SOURCE

Matanuska Assembly of God public water source is a Class B (transient/noncommunity) is privately owned and operated. The source consists of one well west of the city limits of Palmer and is at an elevation of 250 feet above sea level. The well is located on the north of the Palmer-Wasilla Highway 3 miles west of Palmer. According to the well log, Matanuska Assembly of God does not appear to be grouted, but is functioning properly. The well penetrates gravel and silty to 75 feet below land surface. The well is not screened and had a static water level of 40 feet below land surface at the time of drilling (3/26/78).

The water from Matanuska Assembly of God consists of a hydropneumatic pressure tank, jet pump and atmospheric storage tank. This water source operates year round. The Matanuska Assembly of God drinking water source collectively serves approximately 104 residents and non-residents through two service connections.

ASSESSMENT AND PROTECTION AREA FOR MATANUSKA ASSEMBLY OF GOD DRINKING WATER SOURCE

The Drinking Water Protection and Assessment Area that has been established for Matanuska Assembly of God in the area that is most sensitive to contamination. This area has served as a basis for assessing the risk of the drinking water source to contamination. This zone around the drinking water source is the most critical area for the preservation of the quality of the drinking water for this source. For simplicity, this area will be known as your Drinking Water Protection Area and will serve as the area of focus for voluntary protection efforts.

Conceptually, groundwater enters the aquifer systems along the front range of the Talkeetna and Chugach Mountains and flows toward Cook Inlet. An analytical calculation was used to calculate the size and shape of the area that contributes water to the well. The input parameters describing the attributes of the aquifer in this calculation were adopted from the U.S. Geological Survey (*Patrick, Brabets, and Glass, 1989*). This analytical calculation was used as a guide as the first step in establishing the protection area for Matanuska Assembly of God. Additional methods were further employed to take into account any uncertainties in groundwater flow and aquifer characteristics to arrive at a meaningful and conservative protection area with respect to public health (Please refer to the Guidance Manual for Class B Public Water Systems for additional information).

The Drinking Water Protection Areas established for wells by the Alaska Department of Environmental Conservation are separated into zones. These zones correspond to a time-of-travel. Time-of-travel is the time required for water to move in the saturated zone of the ground from a specific point to the well. The Drinking Water Protection Areas for Matanuska Assembly of God contain three zones, Zone A, Zone B, and Zone C (See Map 1 in Appendix A). Zone A corresponds to the area between the well and the distance equal to $\frac{1}{4}$ of the distance of the 2-year time-of-travel. Depending on where a contaminant source is located within Zone A, travel time for a contaminant to the well may be on the order of several days to several hours. Zone A also extends down gradient from the well to take into account the area of the aquifer that is influenced by pumping of the well.

The Zone B protection area for Matanuska Assembly of God corresponds to a time-of-travel of less than two years and extends toward to base of the Talkeetna Mountains. Lastly, the Zone C protection area extends

from Zone B to the top of the watershed divide of the Chugach Mountains.

INVENTORY OF POTENTIAL AND EXISTING CONTAMINANT SOURCES

The Drinking Water Protection Program has completed an inventory of potential and existing sources of contamination within Matanuska Assembly of God Drinking Water Protection Area. This survey was completed through a search of ADEC records and other publicly available information.

Potential sources of contamination to drinking water supplies cover a wide range of categories and types. Potential drinking water contaminants are found within agricultural, residential, commercial, and industrial areas, but can also occur within areas that have little or no development.

For the basis of this assessment and all Class B public water system assessments, three categories of drinking water contaminants were inventoried. They include:

- Bacteria and viruses;
- Nitrates and/or nitrites;
- Volatile organic chemicals;

Map 1 in Appendix C depicts the Contaminant Source Inventory for Matanuska Assembly of God.

Inventoried potential sources of contamination within Zones A, Zone B and Zone C were associated with residential activity of lawns and gardens, septic systems, sewer lines and roads. Zone D contains natural wilderness. Below is a summary of the contaminant sources inventoried within the Matanuska Assembly of God protection area:

- Residential lawn and garden
- Septic systems
- Sewer lines
- Roads.

This potential contaminant source presents risks for all three categories of drinking water contaminants for Matanuska Assembly of God drinking water source.

RANKING OF CONTAMINANT RISKS

Potential and existing sources of contamination have been identified, sorted, and ranked according to what type and level of risk they represent. Ranking of contaminant risks for a “potential” or “existing” source of contamination is a function of toxicity and volumes of specific contaminants associated with that source. Contaminant risks are further a function of the number

and density of those types of contaminant sources as well as the proximity of those sources to the well.

VULNERABILITY OF MATANUSKA ASSEMBLY OF GOD DRINKING WATER SOURCES

Vulnerability of a drinking water source to contamination is a combination of two factors:

- natural susceptibility; and
- contaminant risks.

Each of the three categories of drinking water contaminants has been analyzed and an overall vulnerability score of 0 to 100 is ultimately assigned:

$$\begin{aligned}
 &\text{Natural Susceptibility (0 – 50 points)} \\
 &\quad + \\
 &\quad \text{Contaminant Risks (0 – 50 points)} \\
 &\quad = \\
 &\quad \text{Vulnerability of the} \\
 &\text{Drinking Water Source to Contamination (0 – 100).}
 \end{aligned}$$

A score for the Natural Susceptibility is achieved by analyzing the properties of the well and the aquifer.

$$\begin{aligned}
 &\text{Susceptibility of the Wellhead (0 – 25 Points)} \\
 &\quad + \\
 &\quad \text{Susceptibility of the Aquifer (0 – 25 Points)} \\
 &= \text{Natural Susceptibility (Susceptibility of the Well)} \\
 &\quad \text{(0 – 50 Points)}
 \end{aligned}$$

Matanuska Assembly of God is completed in a confined or semi-confined aquifer setting. The well penetrates fifty feet of silt, sand and gravel layers. This till material may provide somewhat of a protective barrier for the movement of contaminants in the subsurface. However, near the base of the Talkeetna Mountains, the clay and till layers tend to be discontinuous and thin toward the mountains. Therefore, contaminants that enter the subsurface near the base of the mountains may enter the confined aquifer uninhibited by the absence of any protective layer. This well does not appear to be properly grouted as indicated previously from information obtained from (ADEC) records. The absence of grouting can promote the transport of contaminants along the well casing. Combining the susceptibility of the wellhead and the aquifer to contamination leads to a score (0 – 50 points) and rating of overall Susceptibility (See Appendix D). Table 1

shows the overall Susceptibility score and rating for Matanuska Assembly of God.

Table 1. Natural Susceptibility - Susceptibility of the Wellhead and Aquifer to Contamination

	Score	Rating
Susceptibility of the Wellhead	5	Low
Susceptibility of the Aquifer	25	Very High
Natural Susceptibility	30	High

Contaminant risks to a drinking water source depend on the type, number or density, and distribution of contaminant sources. Domestic lawns and gardens, septic systems, sewer lines and roads contribute the identified risk for potential contamination to the Matanuska Assembly of God source of public drinking water.

A score (0 – 50 points) and rating of Contaminant Risks (See Appendix D) is assigned based on the findings of the Contaminant Source Inventory (Appendix B - Table 1 – Table 7). This portion of the analysis examines any existing or historical contamination that has been detected at the drinking water source through routine sampling. It also reviews contamination that has or may have occurred but has not arrived or been detected at the well. Table 2 summarizes the Contaminant Risks for each category of drinking water contaminants.

Table 2. Contaminant Risks

Contaminant Risks	Score	Rating
Bacteria and Viruses	25	Medium
Nitrates and/or Nitrites	25	Medium
Volatile Organic Chemicals	12	Low

Appendix D contains eight charts, which together form the ‘Vulnerability Analysis’ for a source water assessment for a public drinking water source. Chart 1 analyzes the ‘Susceptibility of the Wellhead’ to contamination by looking at the construction of the well and its surrounding area. Chart 2 analyzes the ‘Susceptibility of the Aquifer’ to contamination by looking at the naturally occurring attributes of the water source and influences on the groundwater system that might lead to contamination. Chart 3 analyzes ‘Contaminant Risks’ for the drinking water source with respect to bacteria and viruses. The ‘Contaminant Risks’ portion of the analysis considers potential sources of contaminants as well as a review of

contamination that has or may have occurred but has not arrived or been detected at the well. Lastly, Chart 4 contains the ‘Vulnerability Analysis for Bacteria and Viruses’. Charts 5 through 8 contain the Contaminant Risks and Vulnerability Analysis for nitrates and nitrites and volatile organic chemicals, respectively.

Vulnerability of the drinking water source to contamination is the combination of susceptibility of the aquifer and the well with contaminant risks. Table 3 contains the overall vulnerability scores (0 – 100) and ratings for each of the three categories of drinking water contaminants (See Appendix D). Note: scores are rounded off to the nearest five.

Table 3. Overall Vulnerability of Matanuska Assembly of God Public Drinking Water Source to Contamination by Category

Category	Score	Rating
Bacteria and Viruses	50	Medium
Nitrates and Nitrites	50	Medium
Volatile Organic Chemicals	50	Medium

Tables 2 through 4 in Appendix B contain the ranking of potential and existing sources of contamination with respect to bacteria and viruses, nitrates and/or nitrites, and volatile organic chemicals.

The roads, lawns and gardens and sewer lines in Zone A are the factors determining contaminant risks for all categories of contaminants (See “Overall Rank after Analysis” in Table 2 – 4 of Appendix B).

Overall, contaminant risk for the bacteria and viruses category is medium. Bacteria and Viruses were not detected in the source waters of Matanuska Assembly of God. The contaminate risk from bacteria and viruses with the susceptibility of the well yields an overall medium vulnerability to contamination from bacteria and viruses.

Nitrates and/or nitrites are found in natural background concentrations at the site, as elsewhere in the Alaska. Sampling history of Matanuska Assembly of God source waters indicate low concentrations of nitrate (See Chart 6 – Contaminant Risks for Nitrates/Nitrites in Appendix D). Existing nitrate contamination is approximately 0.2% of the allowable limit (MCL) for this contaminant. Due to the high solubility and weak retention by soil, nitrates are very mobile in soil, moving at approximately the same rate as water. Nevertheless, the current nitrate concentration in Matanuska Assembly of God remains at safe levels with respect to human health.

Overall, contaminant risks for the nitrate/nitrite category is medium with the residential lawns and gardens, sewer lines and roads driving the score. Combining this potential nitrates and/or nitrites contamination risk with the susceptibility of the well yields an overall vulnerability to contamination of medium for this source of public drinking water.

Volatile Organic Chemicals were not detected in the source waters of Matanuska Assembly of God. Overall, a contaminant risk for the volatile organic chemicals category is low due to the roads, lawns and gardens and septic systems present up gradient from the well. Combining the contaminate risk with the susceptibility of the well yields an overall medium vulnerability to contamination for Volatile Organic Chemicals.

SUMMARY

A *Source Water Assessment* has been completed for the Matanuska Assembly of God source of public drinking water. The overall vulnerability of this source to contamination is **Medium** for bacteria and viruses, nitrates and/or nitrites, and volatile organic chemicals. This assessment of contaminant risks can be used as a foundation for local voluntary protection efforts as well as a basis for the continuous efforts on the part of the Matanuska Assembly of God to protect public health. It is anticipated that *Source Water Assessments* will be updated every five years to reflect any changes in the vulnerability and/or susceptibility of the public drinking water source.

REFERENCES CITED

Jakola, J.B., Munter, J.A., and Evans, J.G., 1991, Ground-water resources of the Palmer-big Lake area, Alaska: a conceptual model. Division of Geological & Geophysical Surveys Reported of Investigations 90-4, State of Alaska Department of Natural Resources, Fairbanks, AK.

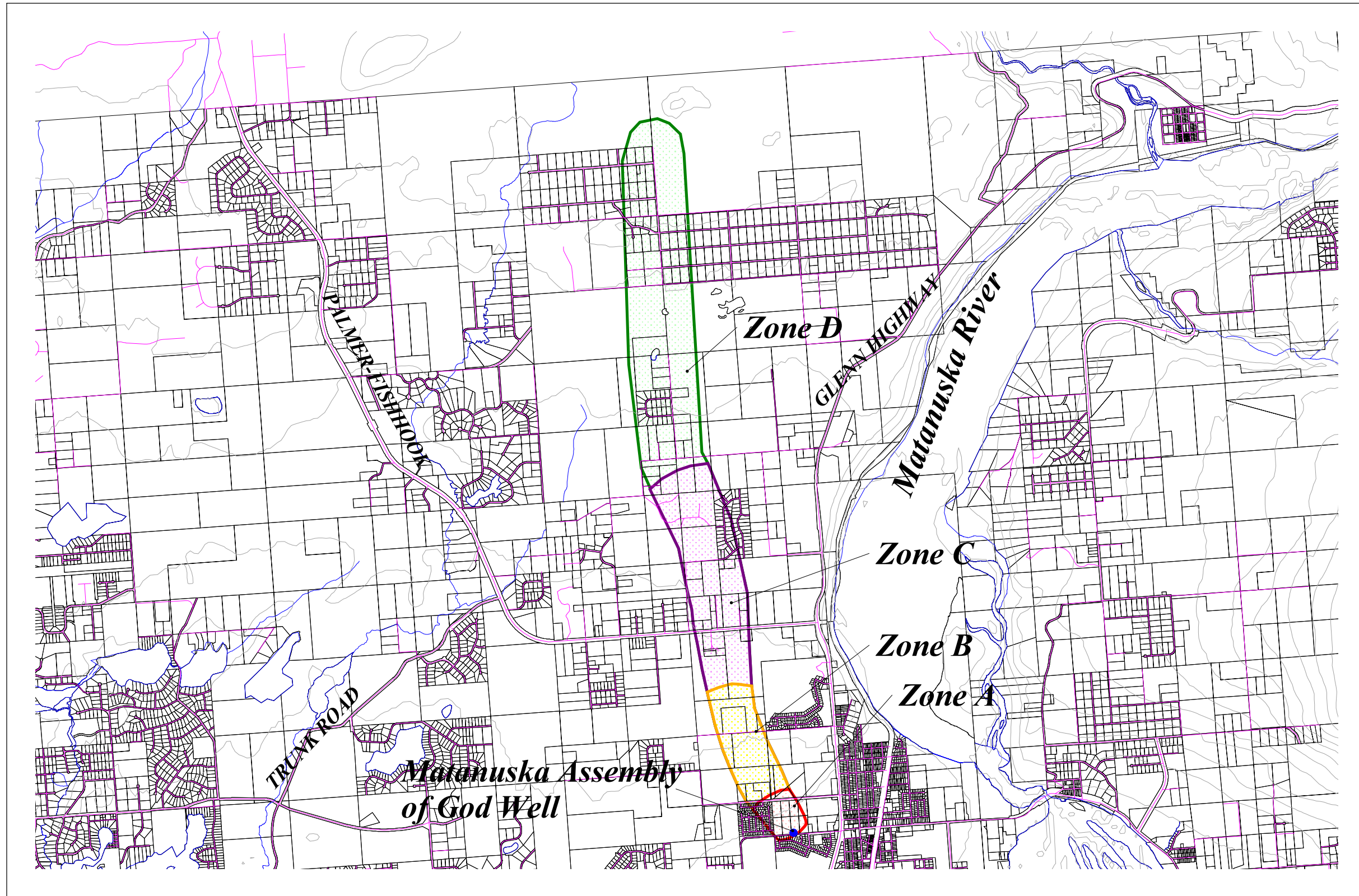
Trainer, F.W., 1960, Geology and Groundwater Resources, Matanuska Valley, Alaska, U.S. Geological Survey Water Supply Paper 1494 U.S. Printing Office, Washington, D.C.

Western Regional Climate Center, 2000, August 24, Web extension to the *Western Regional Climate Center*
[WWW document]. URL http://www.uaa.alaska.edu/enri/ascc_web/ascc_home.html .

APPENDIX A

Matanuska Assembly of God Drinking Water Protection Area

Matanuska Assembly of God (PWSID 226135) Drinking Water Protection Areas



- Public Water System Well**
●
- Lakes and Rivers**
~
- Zone A Protection Area**
Several Months to 2 Years
Travel Time
- Zone B Protection Area**
Less Than 2 Years
Travel Time
- Zone C Protection Area**
2 to 5 Years Travel Time
- Zone D Protection Area**
5 to 10 Years Travel Time
- Roads**
~
- Mat-Su Borough Parcel Boundaries**
□
- Elevation Contours**
~



7000 0 7000 14000 Feet

Map 1

APPENDIX B

Contaminant Source Inventory and Risk Ranking for Matanuska Assembly of God

Table 1

**Contaminant Source Inventory for
Matanuska Assembly of God**

PWSID 226135.001

Contaminate Source Category	Contaminant Source ID	CS ID Tag	Zone	Location	Map	Comments
Lawns and gardens	R1	R1-1	A	Located north of the well	2	Zone A contains 11 acres
Lawns and gardens	R1	R1-2	A	Located north of the well	2	Contains 1 acre
Lawns and gardens	R1	R1-3	C	Located north of the well	2	Zone C contains 42 acres
Septic systems (serves one or more single-family homes)	R2	R2-1	C	WRC	2	
Septic systems (serves one or more single-family homes)	R2	R2-2	C	WRC	2	
Septic systems (serves one or more single-family homes)	R2	R2-3	C	Biscayne	2	
Septic systems (serves one or more single-family homes)	R2	R2-4	C	Biscayne	2	
Septic systems (serves one or more single-family homes)	R2	R2-5	C	Biscayne	2	
Septic systems (serves one or more single-family homes)	R2	R2-6	C	Biscayne	2	
Septic systems (serves one or more single-family homes)	R2	R2-7	C	Biscayne	2	
Septic systems (serves one or more single-family homes)	R2	R2-8	C	Biscayne	2	
Septic systems (serves one or more single-family homes)	R2	R2-9	C	Biscayne	2	
Septic systems (serves one or more single-family homes)	R2	R2-10	C	Biscayne	2	
Septic systems (serves one or more single-family homes)	R2	R2-11	C	Monte Carlo	2	
Septic systems (serves one or more single-family homes)	R2	R2-12	C	Monte Carlo	2	
Septic systems (serves one or more single-family homes)	R2	R2-13	C	Monte Carlo	2	
Septic systems (serves one or more single-family homes)	R2	R2-14	C	Monte Carlo	2	
Septic systems (serves one or more single-family homes)	R2	R2-15	C	Monte Carlo	2	
Septic systems (serves one or more single-family homes)	R2	R2-16	C	Monte Carlo	2	
Septic systems (serves one or more single-family homes)	R2	R2-17	C	Monte Carlo	2	

Table 1

**Contaminant Source Inventory for
Matanuska Assembly of God**

PWSID 226135.001

Contaminate Source Category	Contaminant Source ID	CS ID Tag	Zone	Location	Map	Comments
Septic systems (serves one or more single-family homes)	R2	R2-18	C	Monte Carlo	2	
Septic systems (serves one or more single-family homes)	R2	R2-19	C	Monte Carlo	2	
Septic systems (serves one or more single-family homes)	R2	R2-20	C	Monte Carlo	2	
Septic systems (serves one or more single-family homes)	R2	R2-21	C	Monte Carlo	2	
Septic systems (serves one or more single-family homes)	R2	R2-22	C	Monte Carlo	2	
Septic systems (serves one or more single-family homes)	R2	R2-23	C	Monte Carlo	2	
Septic systems (serves one or more single-family homes)	R2	R2-24	C	Monte Carlo	2	
Septic systems (serves one or more single-family homes)	R2	R2-25	C	Monte Carlo	2	
Septic systems (serves one or more single-family homes)	R2	R2-26	C	Monte Carlo	2	
Septic systems (serves one or more single-family homes)	R2	R2-27	C	Monte Carlo	2	
Septic systems (serves one or more single-family homes)	R2	R2-28	C	Monte Carlo	2	
Septic systems (serves one or more single-family homes)	R2	R2-29	C	Monte Carlo	2	
Septic systems (serves one or more single-family homes)	R2	R2-30	C	Monte Carlo	2	
Septic systems (serves one or more single-family homes)	R2	R2-31	C	Monte Carlo	2	
Septic systems (serves one or more single-family homes)	R2	R2-32	C	Monte Carlo	2	
Highways and roads, dirt/gravel	X20	X20-1	A	Arctic	2	
Highways and roads, dirt/gravel	X20	X20-2	C	Palmer-Fishhook	2	
Highways and roads, dirt/gravel	X24	X24-1	A	Anna	2	
Highways and roads, dirt/gravel	X24	X24-2	A	Gloria	2	
Highways and roads, dirt/gravel	X24	X24-3	A	Beaver	2	

Table 1

**Contaminant Source Inventory for
Matanuska Assembly of God**

PWSID 226135.001

Contaminate Source Category	Contaminant Source ID	CS ID Tag	Zone	Location	Map	Comments
Highways and roads, dirt/gravel	X24	X24-4	A	Beyland	2	
Highways and roads, dirt/gravel	X24	X24-5	A	Scott	2	
Highways and roads, dirt/gravel	X24	X24-6	B	Marsh	3	
Highways and roads, dirt/gravel	X24	X24-7	C	WRC	3	
Highways and roads, dirt/gravel	X24	X24-8	C	Ryder	3	
Highways and roads, dirt/gravel	X24	X24-9	C	Werner	4	
Highways and roads, dirt/gravel	X24	X24-10	C	Biscayne	4	
Highways and roads, dirt/gravel	X24	X24-11	C	Monte Carlo	4	
Highways and roads, dirt/gravel	X24	X24-12	C	Corvette	4	
Highways and roads, dirt/gravel	X24	X24-13	C	Brywood	4	
Highways and roads, dirt/gravel	X24	X24-14	C	Jaywood	4	
Highways and roads, dirt/gravel	X24	X24-15	C	Fenceline	4	
Highways and roads, dirt/gravel	X24	X24-16	C	Sandlewood	4	
Sewerlines and lift stations	D1	D1-1	A	Palmer	2	

Table 2

**Potential and Existing Sources of Contamination for
Matanuska Assembly of God
Bacterias and Viruses**

PWSID 226135.001

Contaminant Source Category	Contaminant Source ID	CS ID Tag	Zone	Risk Ranking for Analysis	Overall Rank for Analysis	Location	Map	Comments
Sewerlines and lift stations	D1	D1-1	A	Medium	1	Palmer	2	
Lawns and gardens	R1	R1-1	A	Low	2	Located north of the well	2	Zone A contains 11 acres
Lawns and gardens	R1	R1-2	A	Low	3	Located north of the well	2	Contains 1 acre
Lawns and gardens	R1	R1-3	C	Low	4	Located north of the well	2	Zone C contains 42 acres
Septic systems (serves one or more single-family homes)	R2	R2-1	C	Very Low	5	WRC	2	
Septic systems (serves one or more single-family homes)	R2	R2-2	C	Very Low	6	WRC	2	
Septic systems (serves one or more single-family homes)	R2	R2-3	C	Very Low	7	Biscayne	2	
Septic systems (serves one or more single-family homes)	R2	R2-4	C	Very Low	8	Biscayne	2	
Septic systems (serves one or more single-family homes)	R2	R2-5	C	Very Low	9	Biscayne	2	
Septic systems (serves one or more single-family homes)	R2	R2-6	C	Very Low	10	Biscayne	2	
Septic systems (serves one or more single-family homes)	R2	R2-7	C	Very Low		Biscayne	2	
Septic systems (serves one or more single-family homes)	R2	R2-8	C	Very Low		Biscayne	2	
Septic systems (serves one or more single-family homes)	R2	R2-9	C	Very Low		Biscayne	2	
Septic systems (serves one or more single-family homes)	R2	R2-10	C	Very Low		Biscayne	2	
Septic systems (serves one or more single-family homes)	R2	R2-11	C	Very Low		Monte Carlo	2	
Septic systems (serves one or more single-family homes)	R2	R2-12	C	Very Low		Monte Carlo	2	
Septic systems (serves one or more single-family homes)	R2	R2-13	C	Very Low		Monte Carlo	2	
Septic systems (serves one or more single-family homes)	R2	R2-14	C	Very Low		Monte Carlo	2	
Septic systems (serves one or more single-family homes)	R2	R2-15	C	Very Low		Monte Carlo	2	

Table 2

**Potential and Existing Sources of Contamination for
Matanuska Assembly of God
Bacterias and Viruses**

PWSID 226135.001

Contaminant Source Category	Contaminant Source ID	CS ID Tag	Zone	Risk Ranking for Analysis	Overall Rank for Analysis	Location	Map	Comments
Septic systems (serves one or more single-family homes)	R2	R2-16	C	Very Low		Monte Carlo	2	
Septic systems (serves one or more single-family homes)	R2	R2-17	C	Very Low		Monte Carlo	2	
Septic systems (serves one or more single-family homes)	R2	R2-18	C	Very Low		Monte Carlo	2	
Septic systems (serves one or more single-family homes)	R2	R2-19	C	Very Low		Monte Carlo	2	
Septic systems (serves one or more single-family homes)	R2	R2-20	C	Very Low		Monte Carlo	2	
Septic systems (serves one or more single-family homes)	R2	R2-21	C	Very Low		Monte Carlo	2	
Septic systems (serves one or more single-family homes)	R2	R2-22	C	Very Low		Monte Carlo	2	
Septic systems (serves one or more single-family homes)	R2	R2-23	C	Very Low		Monte Carlo	2	
Septic systems (serves one or more single-family homes)	R2	R2-24	C	Very Low		Monte Carlo	2	
Septic systems (serves one or more single-family homes)	R2	R2-25	C	Very Low		Monte Carlo	2	
Septic systems (serves one or more single-family homes)	R2	R2-26	C	Very Low		Monte Carlo	2	
Septic systems (serves one or more single-family homes)	R2	R2-27	C	Very Low		Monte Carlo	2	
Septic systems (serves one or more single-family homes)	R2	R2-28	C	Very Low		Monte Carlo	2	
Septic systems (serves one or more single-family homes)	R2	R2-29	C	Very Low		Monte Carlo	2	
Septic systems (serves one or more single-family homes)	R2	R2-30	C	Very Low		Monte Carlo	2	
Septic systems (serves one or more single-family homes)	R2	R2-31	C	Very Low		Monte Carlo	2	
Septic systems (serves one or more single-family homes)	R2	R2-32	C	Very Low		Monte Carlo	2	
Highways and roads, dirt/gravel	X20	X20-1	A	Very Low		Arctic	2	
Highways and roads, dirt/gravel	X20	X20-2	C	Very Low		Palmer-Fishhook	2	

Table 2

**Potential and Existing Sources of Contamination for
Matanuska Assembly of God
Bacterias and Viruses**

PWSID 226135.001

Contaminant Source Category	Contaminant Source ID	CS ID Tag	Zone	Risk Ranking for Analysis	Overall Rank for Analysis	Location	Map	Comments
Highways and roads, dirt/gravel	X24	X24-1	A	Very Low		Anna	2	
Highways and roads, dirt/gravel	X24	X24-2	A	Very Low		Gloria	2	
Highways and roads, dirt/gravel	X24	X24-3	A	Very Low		Beaver	2	
Highways and roads, dirt/gravel	X24	X24-4	A	Very Low		Beyland	2	
Highways and roads, dirt/gravel	X24	X24-5	A	Very Low		Scott	2	
Highways and roads, dirt/gravel	X24	X24-6	B	Very Low		Marsh	3	
Highways and roads, dirt/gravel	X24	X24-7	C	Very Low		WRC	3	
Highways and roads, dirt/gravel	X24	X24-8	C	Very Low		Ryder	3	
Highways and roads, dirt/gravel	X24	X24-9	C	Very Low		Werner	4	
Highways and roads, dirt/gravel	X24	X24-10	C	Very Low		Biscayne	4	
Highways and roads, dirt/gravel	X24	X24-11	C	Very Low		Monte Carlo	4	
Highways and roads, dirt/gravel	X24	X24-12	C	Very Low		Corvette	4	
Highways and roads, dirt/gravel	X24	X24-13	C	Very Low		Brywood	4	
Highways and roads, dirt/gravel	X24	X24-14	C	Very Low		Jaywood	4	
Highways and roads, dirt/gravel	X24	X24-15	C	Very Low		Fenceline	4	
Highways and roads, dirt/gravel	X24	X24-16	C	Very Low		Sandlewood	4	

Table 3

**Potential and Existing Sources of Contamination for
Matanuska Assembly of God
Nitrates and Nitrites**

PWSID 226135.001

Contaminant Source Category	Contaminant Source ID	CS ID Tag	Zone	Risk Ranking for Analysis	Overall Rank for Analysis	Location	Map	Comments
Sewerlines and lift stations	D1	D1-1	A	Medium	1	Palmer	2	
Lawns and gardens	R1	R1-1	A	Low	2	Located north of the well	2	Zone A contains 11 acres
Lawns and gardens	R1	R1-2	A	Low	3	Located north of the well	2	Contains 1 acre
Lawns and gardens	R1	R1-3	C	Low	4	Located north of the well	2	Zone C contains 42 acres
Septic systems (serves one or more single-family homes)	R2	R2-1	C	Very Low	5	WRC	2	
Septic systems (serves one or more single-family homes)	R2	R2-2	C	Very Low	6	WRC	2	
Septic systems (serves one or more single-family homes)	R2	R2-3	C	Very Low	7	Biscayne	2	
Septic systems (serves one or more single-family homes)	R2	R2-4	C	Very Low	8	Biscayne	2	
Septic systems (serves one or more single-family homes)	R2	R2-5	C	Very Low	9	Biscayne	2	
Septic systems (serves one or more single-family homes)	R2	R2-6	C	Very Low	10	Biscayne	2	
Septic systems (serves one or more single-family homes)	R2	R2-7	C	Very Low		Biscayne	2	
Septic systems (serves one or more single-family homes)	R2	R2-8	C	Very Low		Biscayne	2	
Septic systems (serves one or more single-family homes)	R2	R2-9	C	Very Low		Biscayne	2	
Septic systems (serves one or more single-family homes)	R2	R2-10	C	Very Low		Biscayne	2	
Septic systems (serves one or more single-family homes)	R2	R2-11	C	Very Low		Monte Carlo	2	
Septic systems (serves one or more single-family homes)	R2	R2-12	C	Very Low		Monte Carlo	2	
Septic systems (serves one or more single-family homes)	R2	R2-13	C	Very Low		Monte Carlo	2	
Septic systems (serves one or more single-family homes)	R2	R2-14	C	Very Low		Monte Carlo	2	
Septic systems (serves one or more single-family homes)	R2	R2-15	C	Very Low		Monte Carlo	2	

Table 3

**Potential and Existing Sources of Contamination for
Matanuska Assembly of God
Nitrates and Nitrites**

PWSID 226135.001

Contaminant Source Category	Contaminant Source ID	CS ID Tag	Zone	Risk Ranking for Analysis	Overall Rank for Analysis	Location	Map	Comments
Septic systems (serves one or more single-family homes)	R2	R2-16	C	Very Low		Monte Carlo	2	
Septic systems (serves one or more single-family homes)	R2	R2-17	C	Very Low		Monte Carlo	2	
Septic systems (serves one or more single-family homes)	R2	R2-18	C	Very Low		Monte Carlo	2	
Septic systems (serves one or more single-family homes)	R2	R2-19	C	Very Low		Monte Carlo	2	
Septic systems (serves one or more single-family homes)	R2	R2-20	C	Very Low		Monte Carlo	2	
Septic systems (serves one or more single-family homes)	R2	R2-21	C	Very Low		Monte Carlo	2	
Septic systems (serves one or more single-family homes)	R2	R2-22	C	Very Low		Monte Carlo	2	
Septic systems (serves one or more single-family homes)	R2	R2-23	C	Very Low		Monte Carlo	2	
Septic systems (serves one or more single-family homes)	R2	R2-24	C	Very Low		Monte Carlo	2	
Septic systems (serves one or more single-family homes)	R2	R2-25	C	Very Low		Monte Carlo	2	
Septic systems (serves one or more single-family homes)	R2	R2-26	C	Very Low		Monte Carlo	2	
Septic systems (serves one or more single-family homes)	R2	R2-27	C	Very Low		Monte Carlo	2	
Septic systems (serves one or more single-family homes)	R2	R2-28	C	Very Low		Monte Carlo	2	
Septic systems (serves one or more single-family homes)	R2	R2-29	C	Very Low		Monte Carlo	2	
Septic systems (serves one or more single-family homes)	R2	R2-30	C	Very Low		Monte Carlo	2	
Septic systems (serves one or more single-family homes)	R2	R2-31	C	Very Low		Monte Carlo	2	
Septic systems (serves one or more single-family homes)	R2	R2-32	C	Very Low		Monte Carlo	2	
Highways and roads, dirt/gravel	X20	X20-1	A	Very Low		Arctic	2	
Highways and roads, dirt/gravel	X20	X20-2	C	Very Low		Palmer-Fishhook	2	

**Potential and Existing Sources of Contamination for
Matanuska Assembly of God
Nitrates and Nitrites**

Contaminant Source Category	Contaminant Source ID	CS ID Tag	Zone	Risk Ranking for Analysis	Overall Rank for Analysis	Location	Map	Comments
Highways and roads, dirt/gravel	X24	X24-1	A	Very Low		Anna	2	
Highways and roads, dirt/gravel	X24	X24-2	A	Very Low		Gloria	2	
Highways and roads, dirt/gravel	X24	X24-3	A	Very Low		Beaver	2	
Highways and roads, dirt/gravel	X24	X24-4	A	Very Low		Beyland	2	
Highways and roads, dirt/gravel	X24	X24-5	A	Very Low		Scott	2	
Highways and roads, dirt/gravel	X24	X24-6	B	Very Low		Marsh	3	
Highways and roads, dirt/gravel	X24	X24-7	C	Very Low		WRC	3	
Highways and roads, dirt/gravel	X24	X24-8	C	Very Low		Ryder	3	
Highways and roads, dirt/gravel	X24	X24-9	C	Very Low		Werner	4	
Highways and roads, dirt/gravel	X24	X24-10	C	Very Low		Biscayne	4	
Highways and roads, dirt/gravel	X24	X24-11	C	Very Low		Monte Carlo	4	
Highways and roads, dirt/gravel	X24	X24-12	C	Very Low		Corvette	4	
Highways and roads, dirt/gravel	X24	X24-13	C	Very Low		Brywood	4	
Highways and roads, dirt/gravel	X24	X24-14	C	Very Low		Jaywood	4	
Highways and roads, dirt/gravel	X24	X24-15	C	Very Low		Fenceline	4	
Highways and roads, dirt/gravel	X24	X24-16	C	Very Low		Sandlewood	4	

Table 4

**Potential and Existing Sources of Contamination for
Matanuska Assembly of God
Volatile Organic Chemicals (VOCs)**

PWSID 226135.001

Contaminant Source Category	Contaminant Source ID	CS ID Tag	Zone	Risk Ranking for	Overall Rank for	Location	Map	Comments
Sewerlines and lift stations	D1	D1-1	A	Low	1	Palmer	2	
Lawns and gardens	R1	R1-1	A	Low	2	Located north of the well	2	Zone A contains 11 acres
Lawns and gardens	R1	R1-2	A	Low	3	Located north of the well	2	Contains 1 acre
Lawns and gardens	R1	R1-3	C	Low	4	Located north of the well	2	Zone C contains 42 acres
Septic systems (serves one or more single-family homes)	R2	R2-1	C	Very Low	5	WRC	2	
Septic systems (serves one or more single-family homes)	R2	R2-2	C	Very Low	6	WRC	2	
Septic systems (serves one or more single-family homes)	R2	R2-3	C	Very Low	7	Biscayne	2	
Septic systems (serves one or more single-family homes)	R2	R2-4	C	Very Low	8	Biscayne	2	
Septic systems (serves one or more single-family homes)	R2	R2-5	C	Very Low	9	Biscayne	2	
Septic systems (serves one or more single-family homes)	R2	R2-6	C	Very Low	10	Biscayne	2	
Septic systems (serves one or more single-family homes)	R2	R2-7	C	Very Low		Biscayne	2	
Septic systems (serves one or more single-family homes)	R2	R2-8	C	Very Low		Biscayne	2	
Septic systems (serves one or more single-family homes)	R2	R2-9	C	Very Low		Biscayne	2	
Septic systems (serves one or more single-family homes)	R2	R2-10	C	Very Low		Biscayne	2	
Septic systems (serves one or more single-family homes)	R2	R2-11	C	Very Low		Monte Carlo	2	
Septic systems (serves one or more single-family homes)	R2	R2-12	C	Very Low		Monte Carlo	2	
Septic systems (serves one or more single-family homes)	R2	R2-13	C	Very Low		Monte Carlo	2	
Septic systems (serves one or more single-family homes)	R2	R2-14	C	Very Low		Monte Carlo	2	
Septic systems (serves one or more single-family homes)	R2	R2-15	C	Very Low		Monte Carlo	2	

Table 4

**Potential and Existing Sources of Contamination for
Matanuska Assembly of God
Volatile Organic Chemicals (VOCs)**

PWSID 226135.001

Contaminant Source Category	Contaminant Source ID	CS ID Tag	Zone	Risk Ranking for	Overall Rank for	Location	Map	Comments
Septic systems (serves one or more single-family homes)	R2	R2-16	C	Very Low		Monte Carlo	2	
Septic systems (serves one or more single-family homes)	R2	R2-17	C	Very Low		Monte Carlo	2	
Septic systems (serves one or more single-family homes)	R2	R2-18	C	Very Low		Monte Carlo	2	
Septic systems (serves one or more single-family homes)	R2	R2-19	C	Very Low		Monte Carlo	2	
Septic systems (serves one or more single-family homes)	R2	R2-20	C	Very Low		Monte Carlo	2	
Septic systems (serves one or more single-family homes)	R2	R2-21	C	Very Low		Monte Carlo	2	
Septic systems (serves one or more single-family homes)	R2	R2-22	C	Very Low		Monte Carlo	2	
Septic systems (serves one or more single-family homes)	R2	R2-23	C	Very Low		Monte Carlo	2	
Septic systems (serves one or more single-family homes)	R2	R2-24	C	Very Low		Monte Carlo	2	
Septic systems (serves one or more single-family homes)	R2	R2-25	C	Very Low		Monte Carlo	2	
Septic systems (serves one or more single-family homes)	R2	R2-26	C	Very Low		Monte Carlo	2	
Septic systems (serves one or more single-family homes)	R2	R2-27	C	Very Low		Monte Carlo	2	
Septic systems (serves one or more single-family homes)	R2	R2-28	C	Very Low		Monte Carlo	2	
Septic systems (serves one or more single-family homes)	R2	R2-29	C	Very Low		Monte Carlo	2	
Septic systems (serves one or more single-family homes)	R2	R2-30	C	Very Low		Monte Carlo	2	
Septic systems (serves one or more single-family homes)	R2	R2-31	C	Very Low		Monte Carlo	2	
Septic systems (serves one or more single-family homes)	R2	R2-32	C	Very Low		Monte Carlo	2	
Highways and roads, dirt/gravel	X20	X20-1	A	Very Low		Arctic	2	
Highways and roads, dirt/gravel	X20	X20-2	C	Very Low		Palmer-Fishhook	2	

Table 4

**Potential and Existing Sources of Contamination for
Matanuska Assembly of God
Volatile Organic Chemicals (VOCs)**

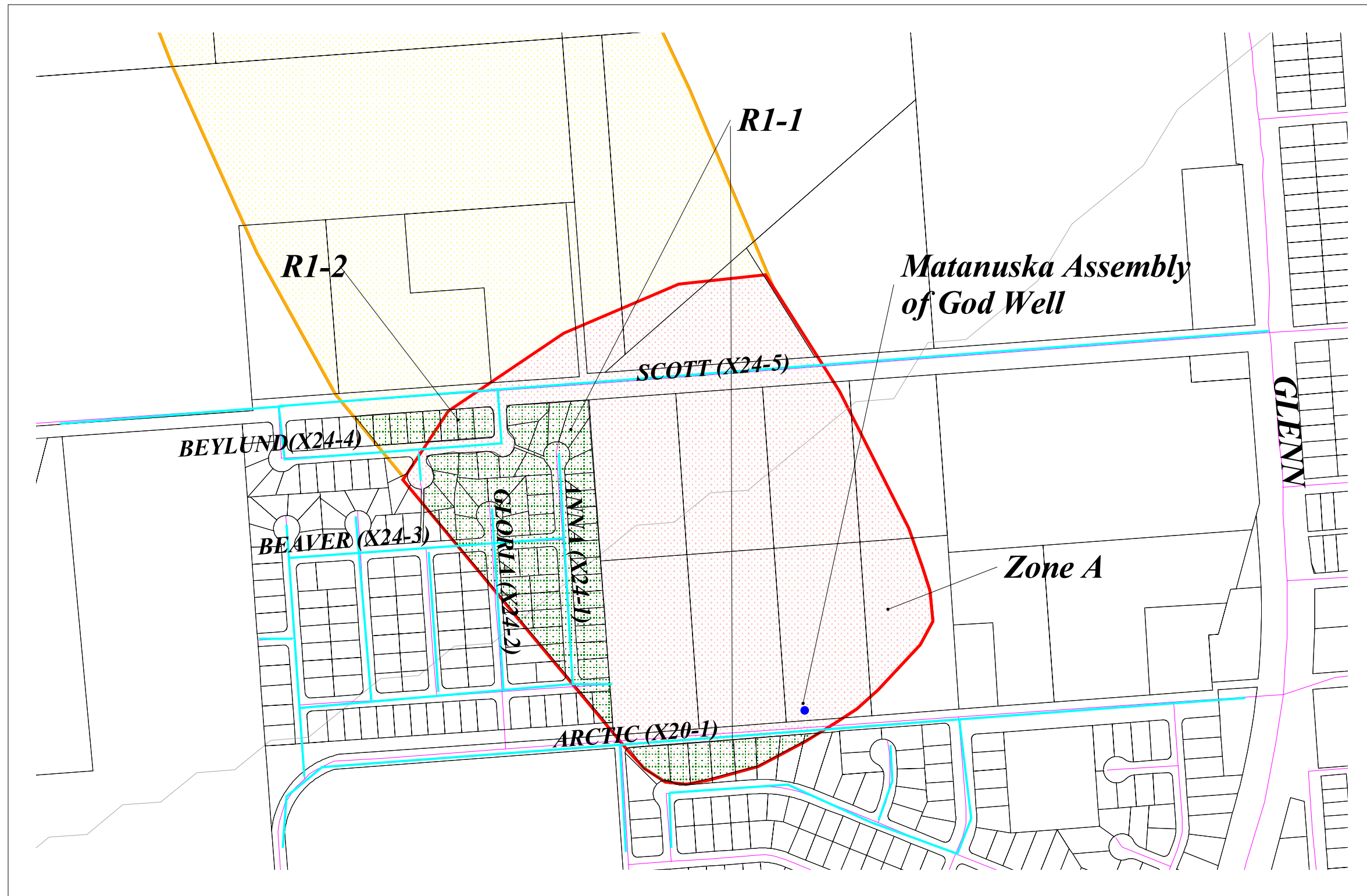
PWSID 226135.001






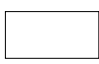



Contaminant Source Category	Contaminant Source ID	CS ID Tag	Zone	Risk Ranking for	Overall Rank for	Location	Map	Comments
Highways and roads, dirt/gravel	X24	X24-1	A	Very Low		Anna	2	
Highways and roads, dirt/gravel	X24	X24-2	A	Very Low		Gloria	2	
Highways and roads, dirt/gravel	X24	X24-3	A	Very Low		Beaver	2	
Highways and roads, dirt/gravel	X24	X24-4	A	Very Low		Beyland	2	
Highways and roads, dirt/gravel	X24	X24-5	A	Very Low		Scott	2	
Highways and roads, dirt/gravel	X24	X24-6	B	Very Low		Marsh	3	
Highways and roads, dirt/gravel	X24	X24-7	C	Very Low		WRC	3	
Highways and roads, dirt/gravel	X24	X24-8	C	Very Low		Ryder	3	
Highways and roads, dirt/gravel	X24	X24-9	C	Very Low		Werner	4	
Highways and roads, dirt/gravel	X24	X24-10	C	Very Low		Biscayne	4	
Highways and roads, dirt/gravel	X24	X24-11	C	Very Low		Monte Carlo	4	
Highways and roads, dirt/gravel	X24	X24-12	C	Very Low		Corvette	4	
Highways and roads, dirt/gravel	X24	X24-13	C	Very Low		Brywood	4	
Highways and roads, dirt/gravel	X24	X24-14	C	Very Low		Jaywood	4	
Highways and roads, dirt/gravel	X24	X24-15	C	Very Low		Fenceline	4	
Highways and roads, dirt/gravel	X24	X24-16	C	Very Low		Sandlewood	4	

APPENDIX C

Matanuska Assembly of God Drinking Water Protection Area and Potential & Existing Contaminant Sources

Drinking Water Protection Areas Potential & Existing Sources of Contamination for Matanuska Assembly of God



-  North
-  Public Water System Wells
-  Zone A Protection Area
Several Months to 2 Years
Travel Time
-  Zone B Protection Area
Less Than 2 Years
Travel Time
-  Roads (Paved X20)
(Gravel X24)
-  Mat-Su Borough Parcel
Boundaries
-  Elevation Contours
-  Lawn & Garden (R1)
-  Palmer Sewer Lines

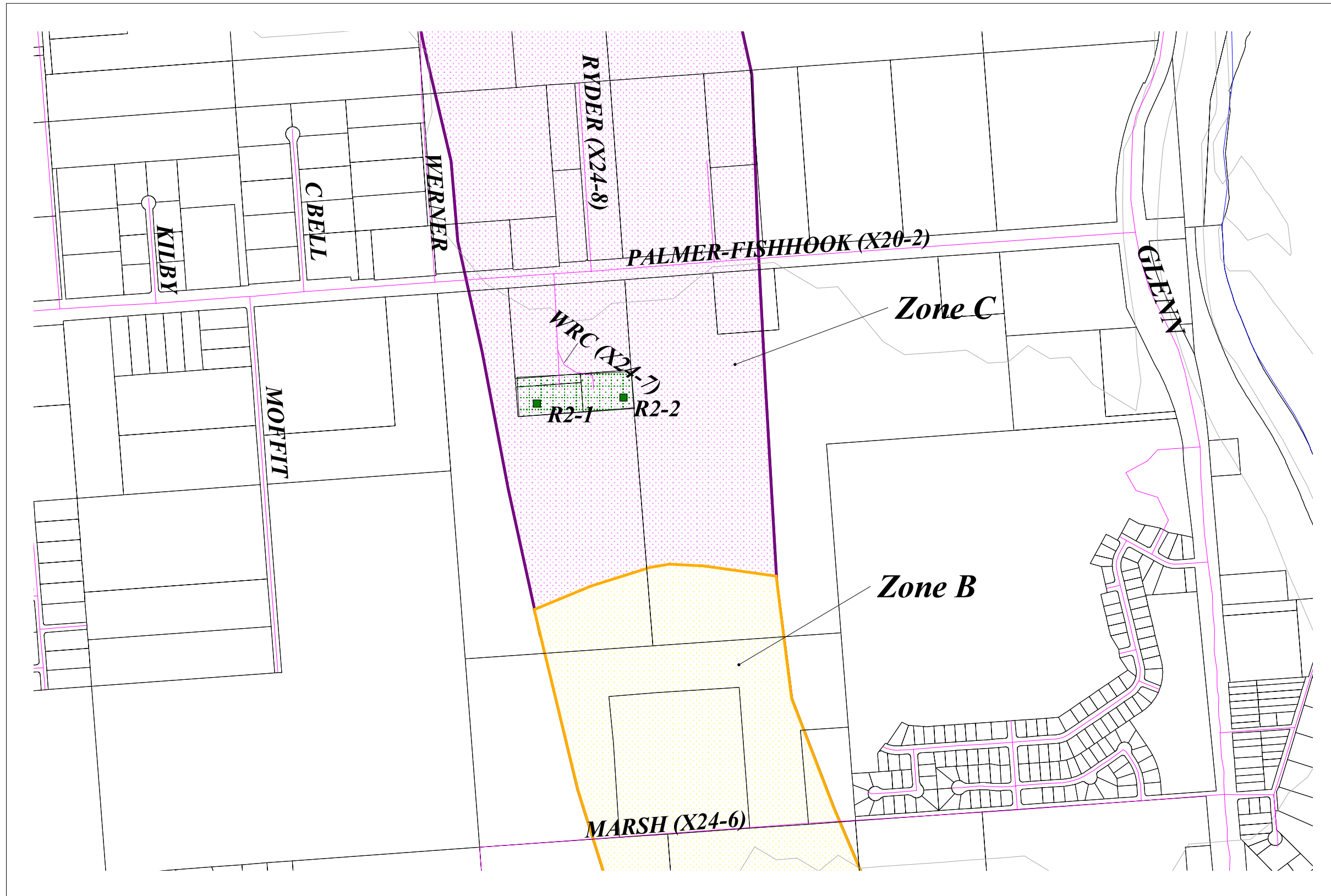
1000 0 1000 2000 Feet

PWSID 226135.001

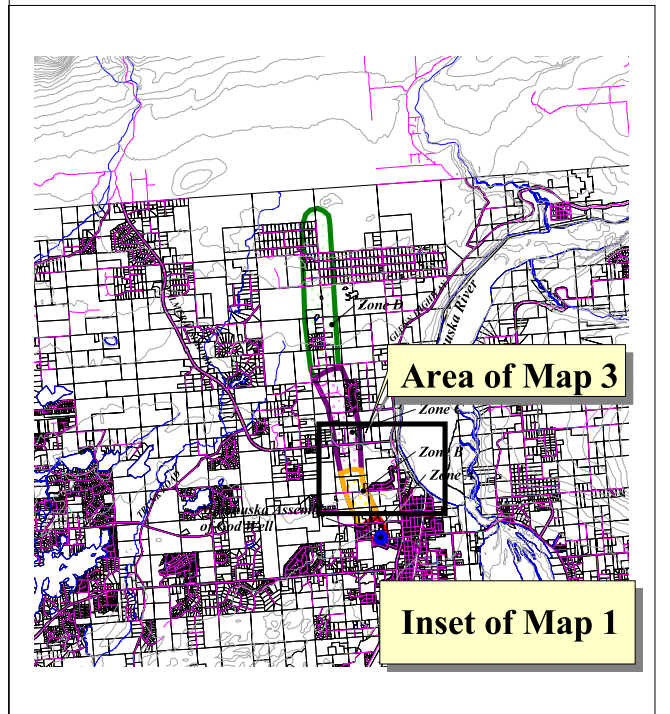
Map 2

Prepared by: B.E.S.T. Resource

Drinking Water Protection Area and Potential & Existing Sources of Contamination for Matanuska Assembly of God



- Residential Well & Septic Systems (R2) ■
- Lakes & Rivers —
- Roads (Paved X20) (Gravel X24) —
- Mat-Su Borough Parcel Boundaries
- Elevation Contours —
- Lawn & Garden (R1)
- Zone B Protection Area
- Zone C Protection Area



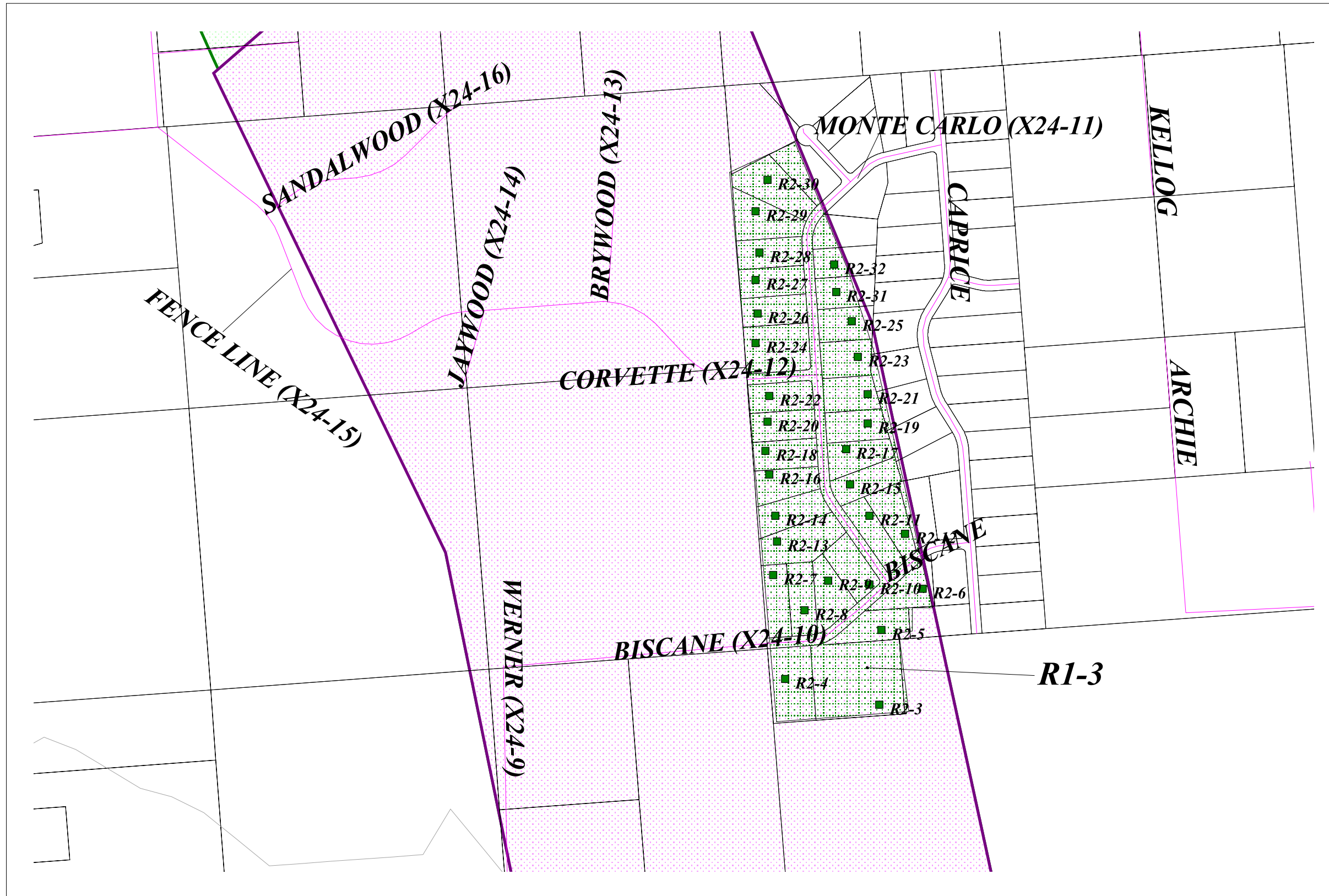
2000 0 2000 4000 Feet

PWSID 226135.001

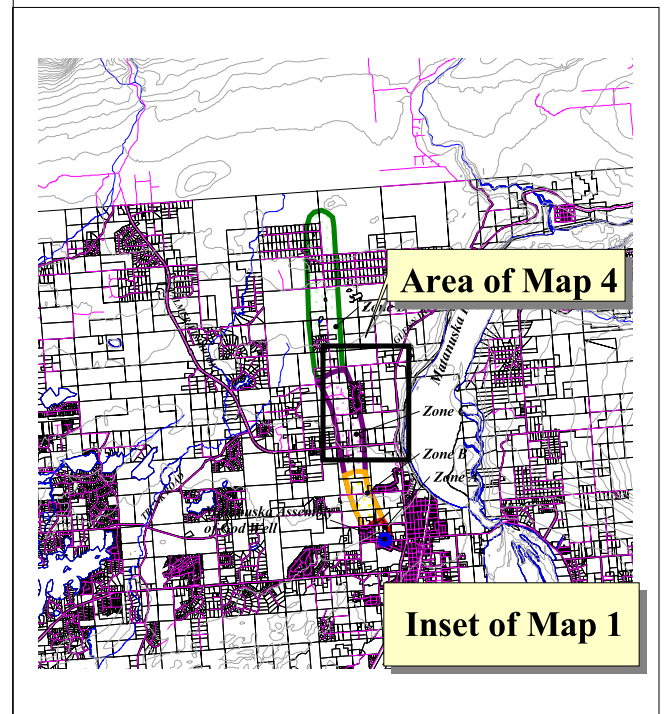
Map 3

Prepared by: B.E.S.T. Resource

Drinking Water Protection Area and Potential & Existing Sources of Contamination for Matanuska Assembly of God



- Residential Well & Septic Systems (R2) ■
- Lakes & Rivers —
- Roads (Paved X20) (Gravel X24) —
- Mat-Su Borough Parcel Boundaries
- Elevation Contours —
- Lawn & Garden (R1)
- Zone C Protection Area



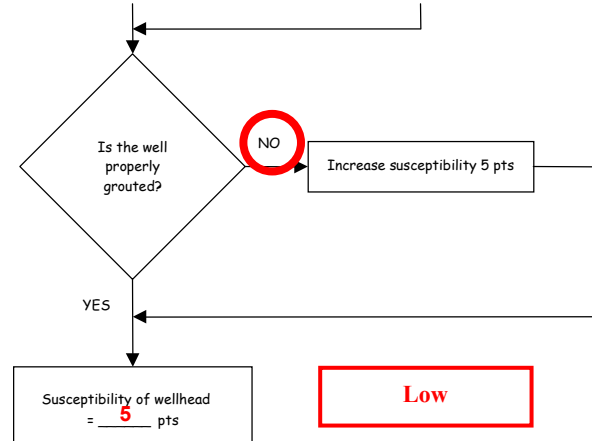
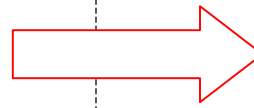
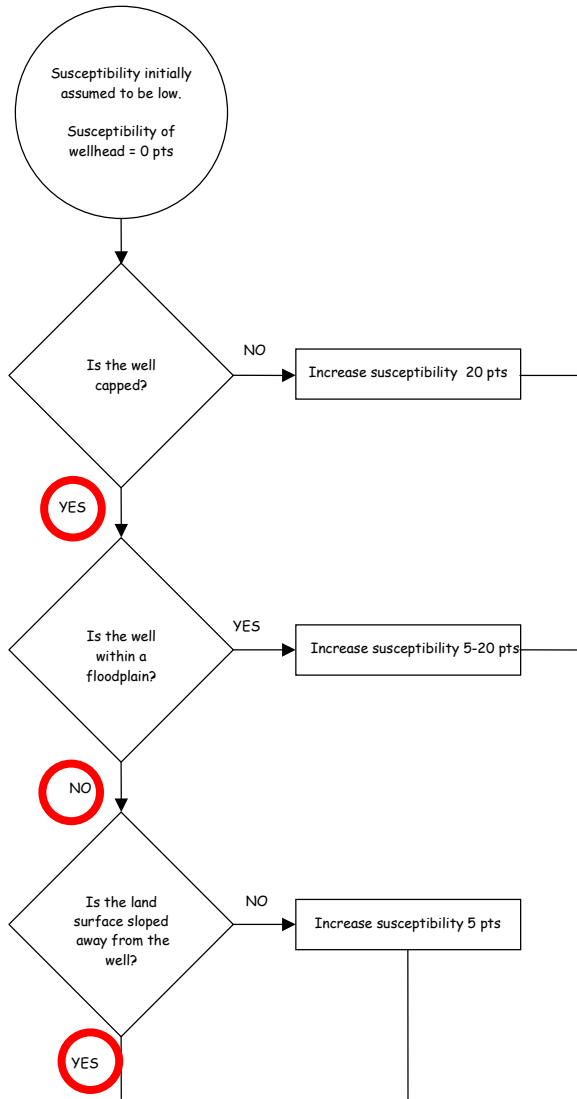
1000 0 1000 2000 Feet

PWSID 226135.001

APPENDIX D

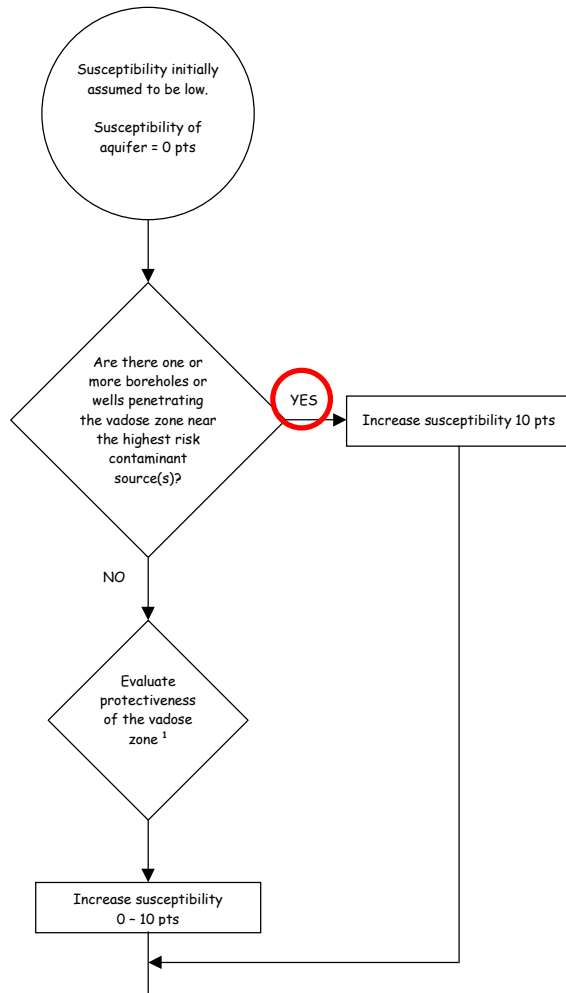
Vulnerability Analysis for Matanuska Assembly of God Public Drinking Water Source

Chart 1. Susceptibility of the wellhead – Matanuska Assembly of God

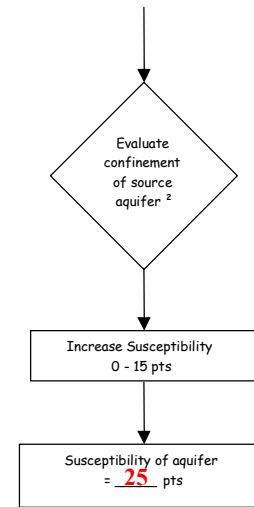
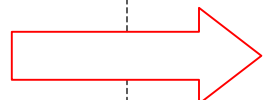


<u>Wellhead Susceptibility Ratings</u>	
20 to 25 pts	very high
15 to < 20 pts	high
10 to < 15 pts	medium
< 10	low

Chart 2. Susceptibility of the aquifer – Matanuska Assembly of God



Recharge (16-20 inches per year, base of Chugach Mountains, and silty gravelly sand)
8/10 = 4 Points
Depth to static water level (40 feet) 4/10 = 2 Point
Protectiveness of the Vadose Zone Total = **6/10 Points**



Unconfined aquifer
15/15 = **10 Points**
Density of boreholes/wells
15/15 = **5 Point**
Degree of Confinement
Total = **15/15 Points**

25 Points

Very High

Aquifer Susceptibility Ratings

20 to 25 pts	very high
15 to < 20 pts	high
10 to < 15 pts	medium
< 10	low

- Protectiveness of the Vadose Zone**
 - net recharge (function of precipitation, slope of land surface, & permeability of soils) [0-10 pts: 50%]
 - depth to water table (unconfined aquifer) or top of confining layer (confined aquifer) [interpolate linearly: 100' - 20', 0-5 pts; 20' - 0', 5-10 pts; 50% weight]
- Degree of Confinement**
 - confined verses unconfined aquifer [confined: $K \leq 10^{-6}$ cm/s, minimum thickness of at least one layer = 20 ft, interpolate linearly 100' - 20', 0 - 10 pts; unconfined = 15 pts; 65%]
 - density of boreholes and wells penetrating the confining layer (confined aquifer) or the water table (unconfined aquifer) [confined: 0 - 15 pts; unconfined = 15 pts; 35% weight]

Chart 3. Contaminant risks for Matanuska Assembly of God – Bacteria & Viruses

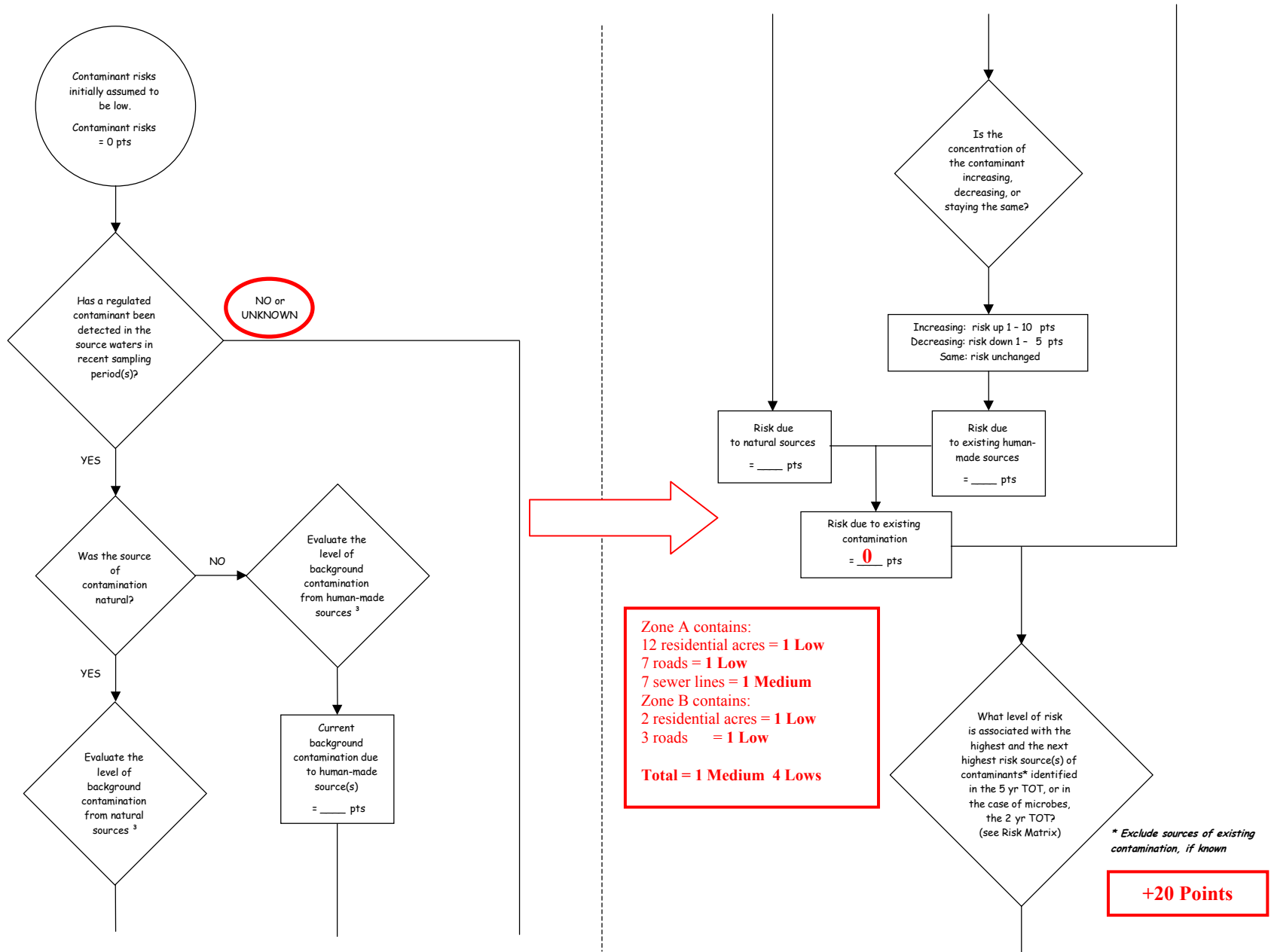


Chart 3. Contaminant risks for Matanuska Assembly of God – Bacteria & Viruses (Continued)

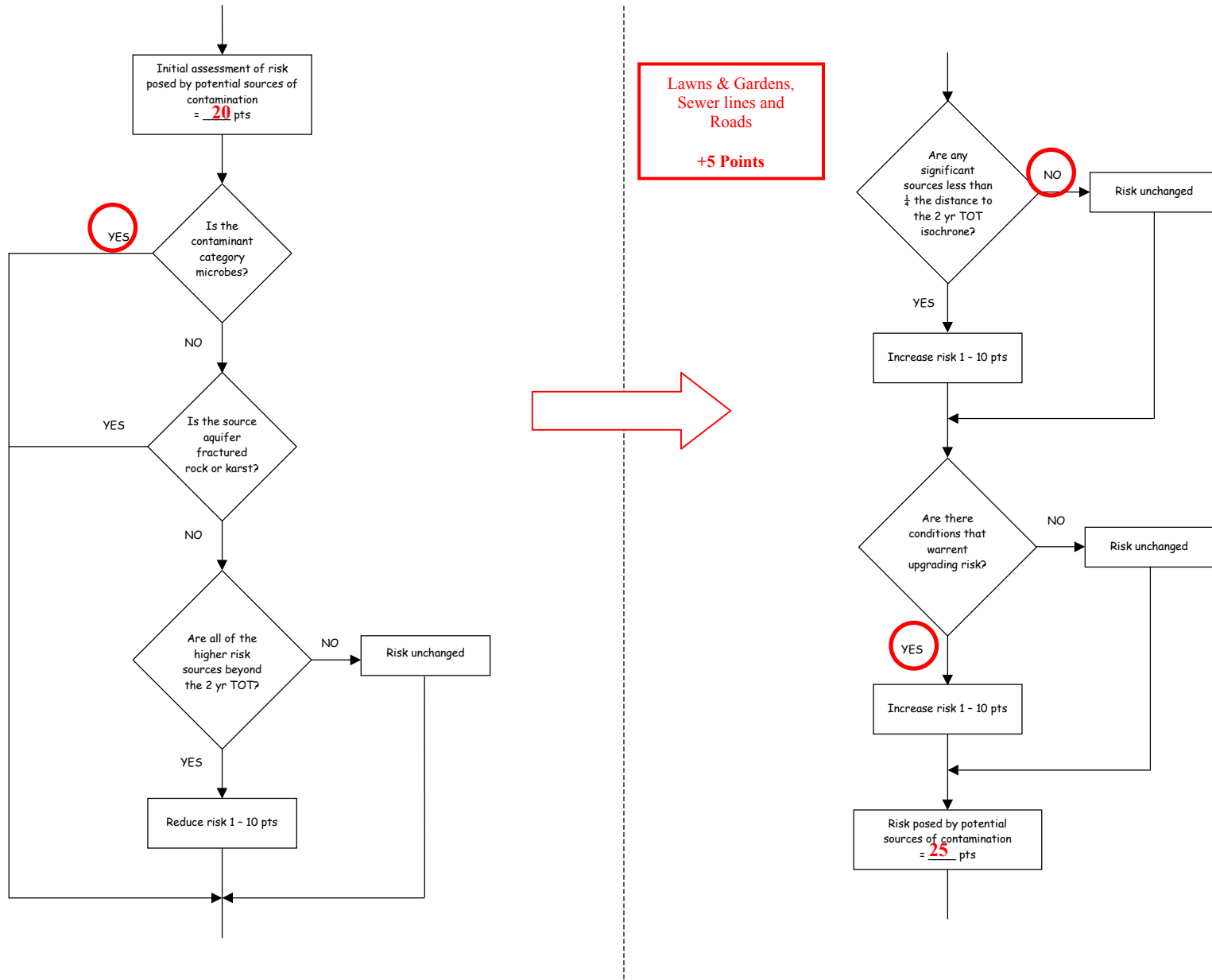


Chart 3. Contaminant risks for Matanuska Assembly of God – Bacteria & Viruses (Continued)

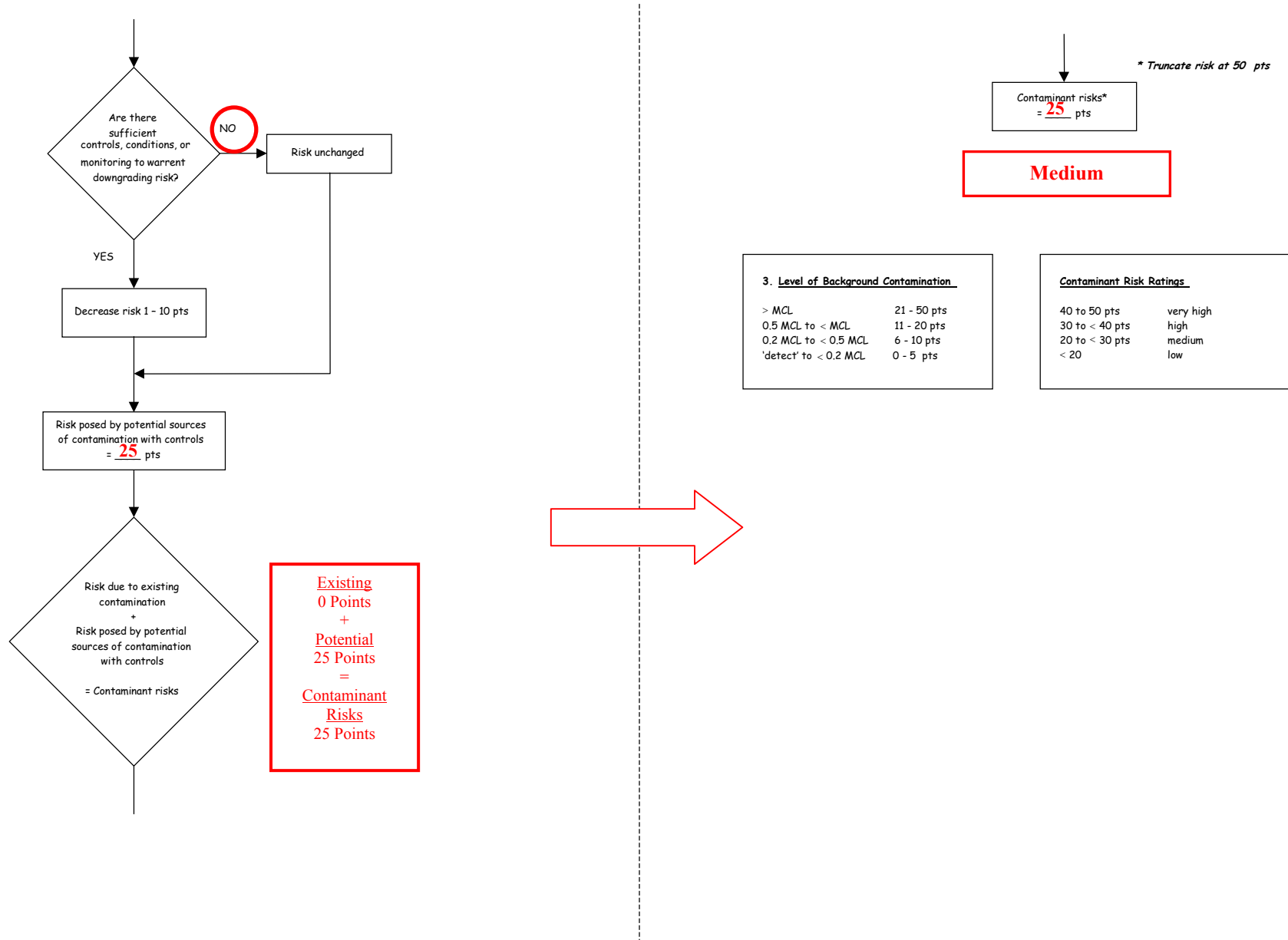


Table 1. Risk Matrix for Contaminant Sources for Matanuska Assembly of God – Bacteria & Viruses

Level of Risk Associated with the Highest Risk Sources

Next Highest Risk Sources(s)	14 residential acres, 10 roads and 7 sewer lines	LOW 10 pts	MEDIUM 20 pts	HIGH 30 pts	VERY HIGH 40 pts
	Low	≥ 10 sources + 10 pts	≥ 10 sources + 5 pts	≥ 20 sources + 5 pts	—
	Medium	—	≥ 2 sources + 5 pts	≥ 5 sources + 5 pts	≥ 10 sources + 5 pts
	High	—	—	1 source + 10 pts	≥ 2 sources + 10 pts
	Very High	—	—	—	1 source + 10 pts

Chart 4. Vulnerability analysis for Matanuska Assembly of God – Bacteria & Viruses

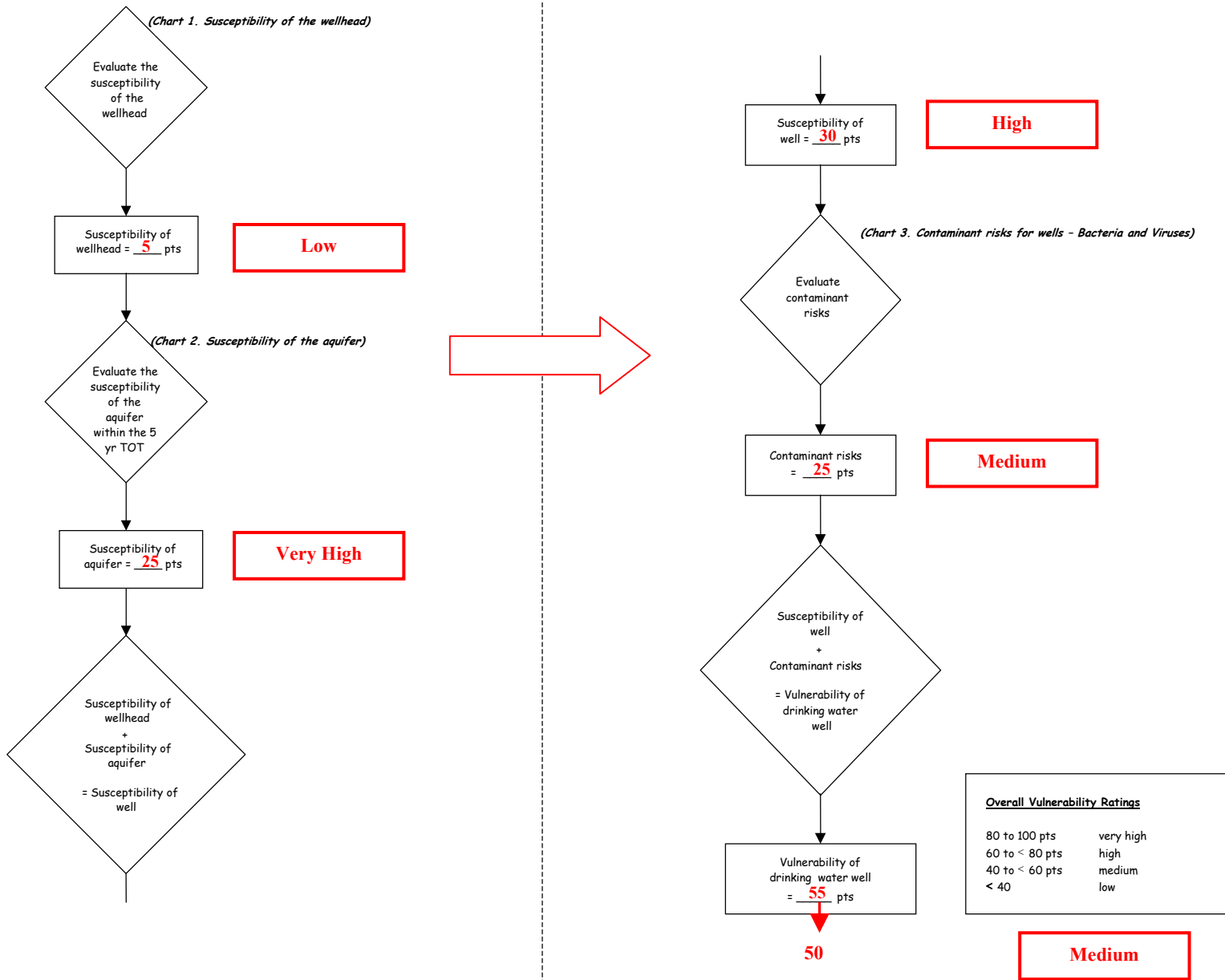


Chart 5. Contaminant risks for Matanuska Assembly of God – Nitrates and Nitrites

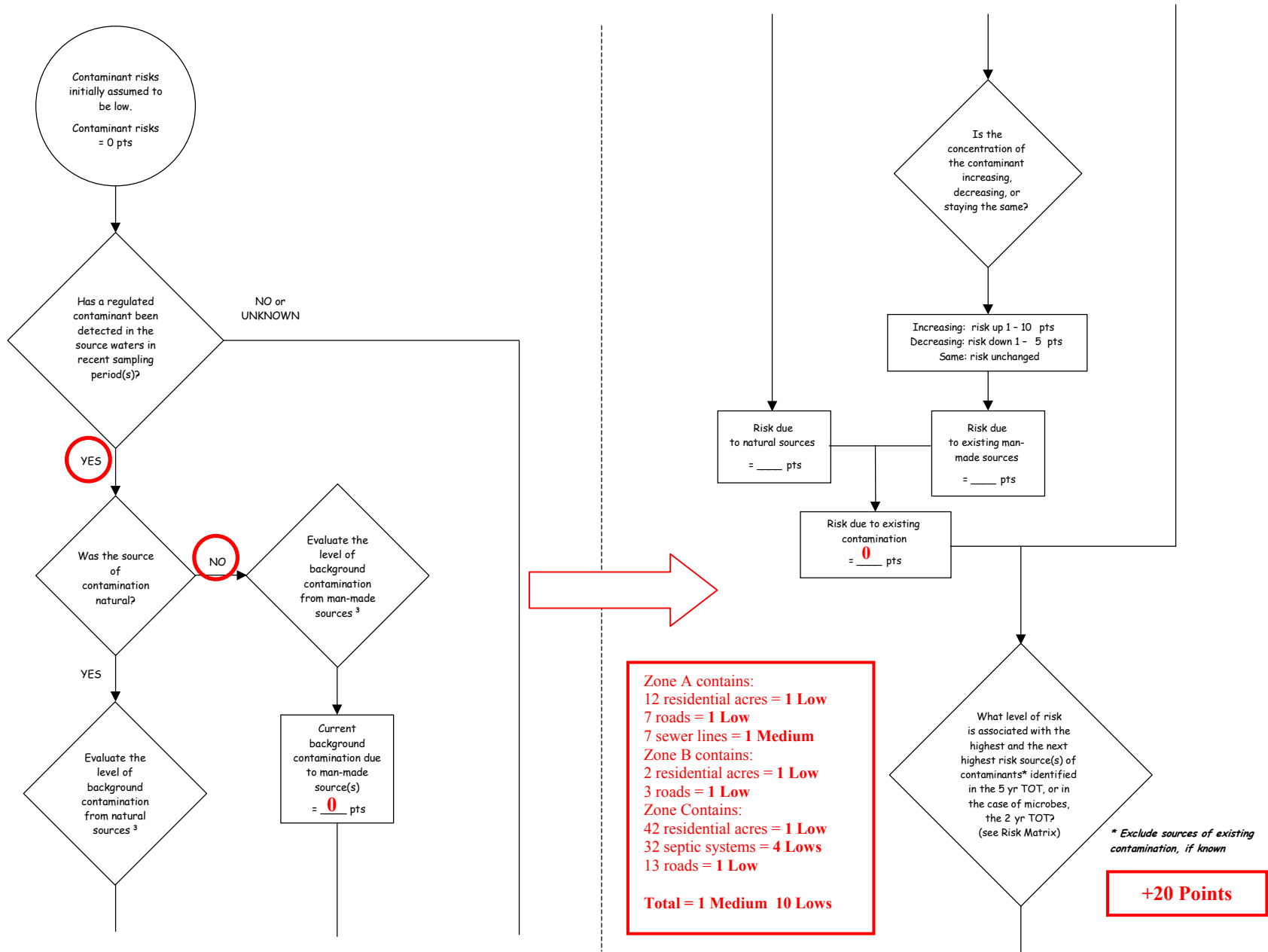
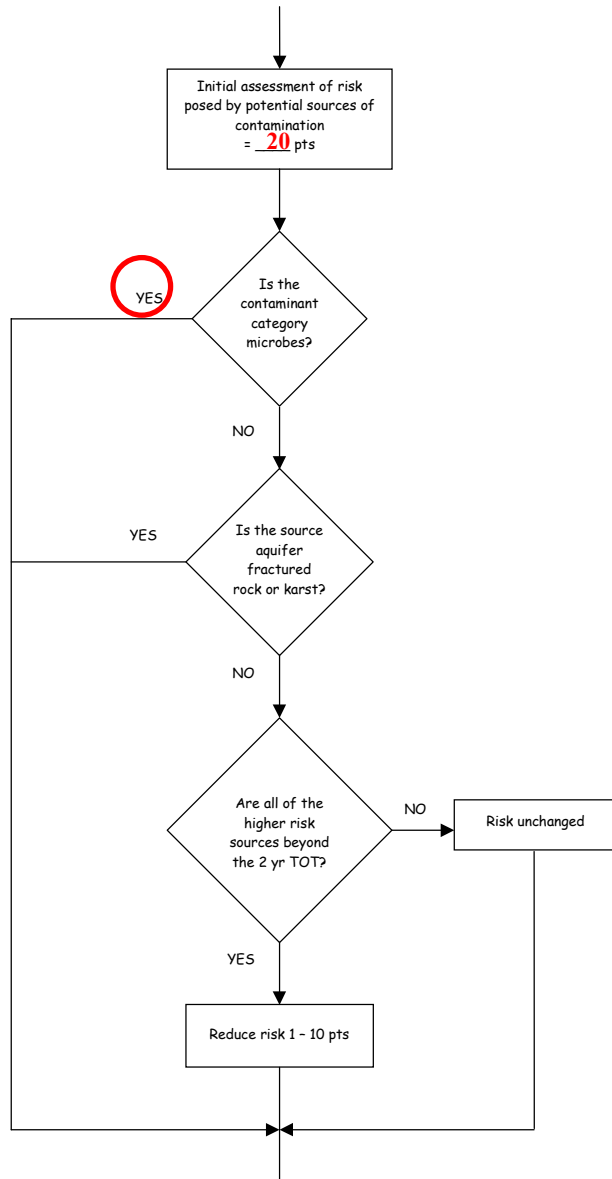


Chart 5. Contaminant risks for Matanuska Assembly of God – Nitrates and Nitrites (Continued)



Residential acres, septic systems, roads and sewer lines
+5 Points

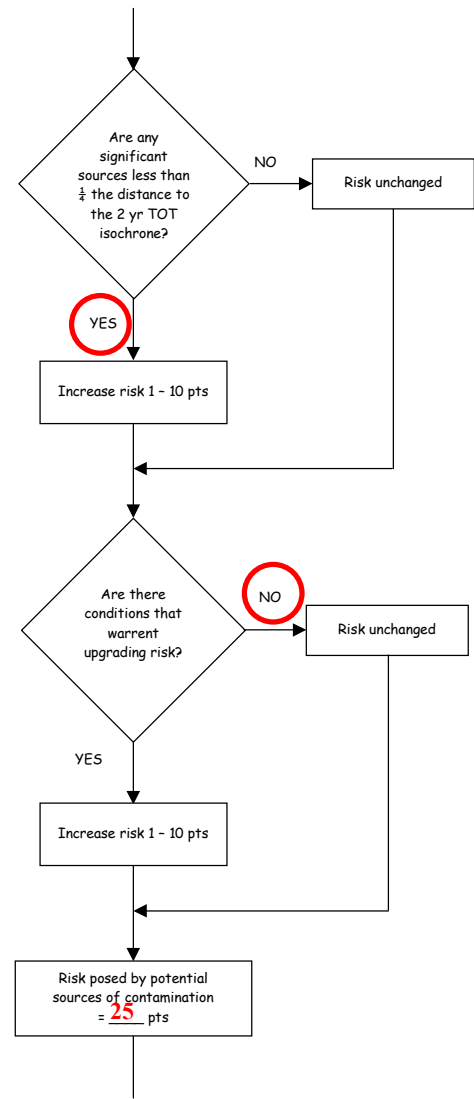
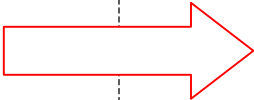


Chart 5. Contaminant risks for Matanuska Assembly of God – Nitrates and Nitrites (Continued)

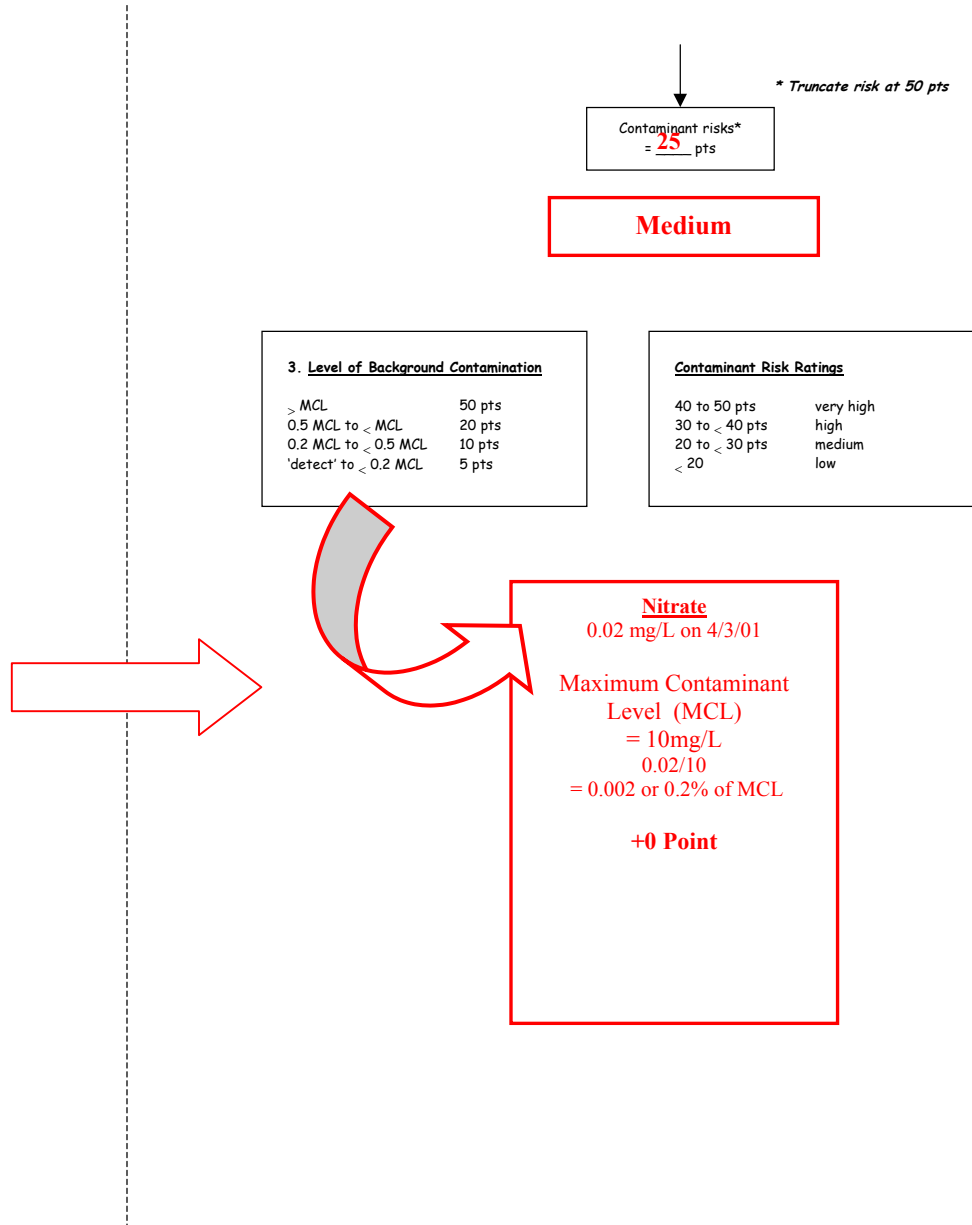
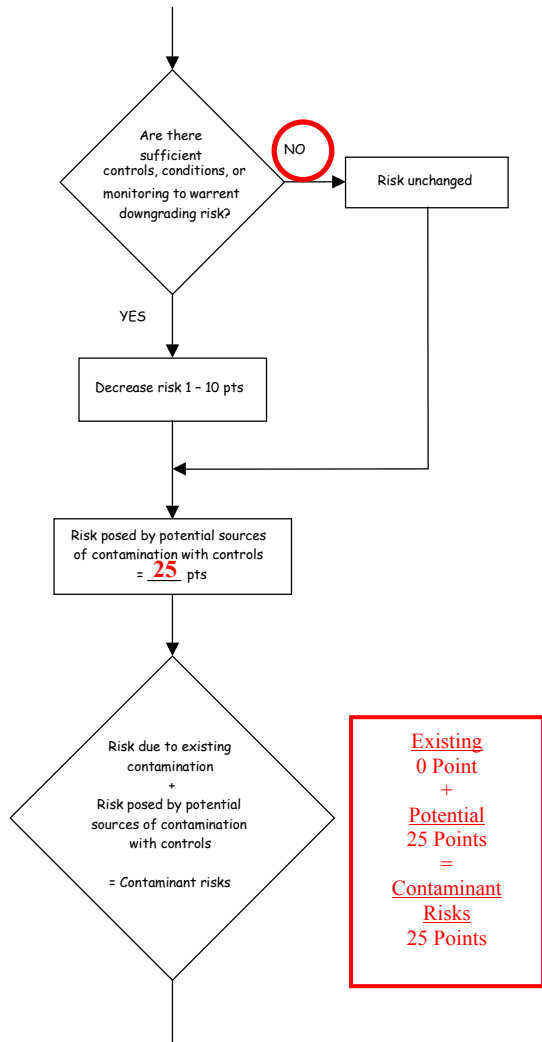


Table 2. Risk Matrix for Contaminant Sources for Matanuska Assembly of God – Nitrates and Nitrites

Level of Risk Associated with the Highest Risk Sources

7 sewerlines, 14 roads, and 56 acres of residential area and 32 septic systems	LOW 10 pts	MEDIUM 20 pts	HIGH 30 pts	VERY HIGH 40 pts
Low	> 10 sources + 10 pts	> 10 sources + 5 pts	> 20 sources + 5 pts	---
Medium	---	> 2 sources + 5 pts	> 5 sources + 5 pts	> 10 sources + 5 pts
High	---	---	1 source + 10 pts	> 2 sources + 10 pts
Very High	---	---	---	1 source + 10 pts

Chart 6. Vulnerability analysis for Matanuska Assembly of God – Nitrates and Nitrites

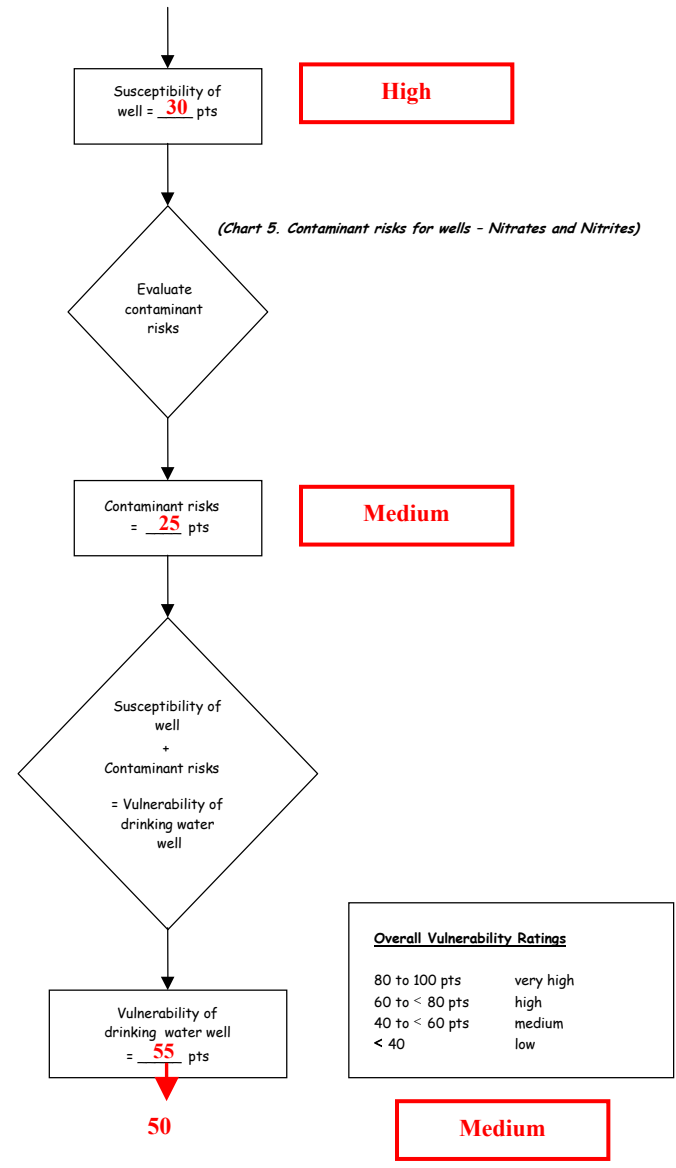
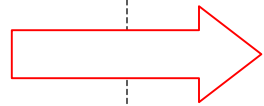
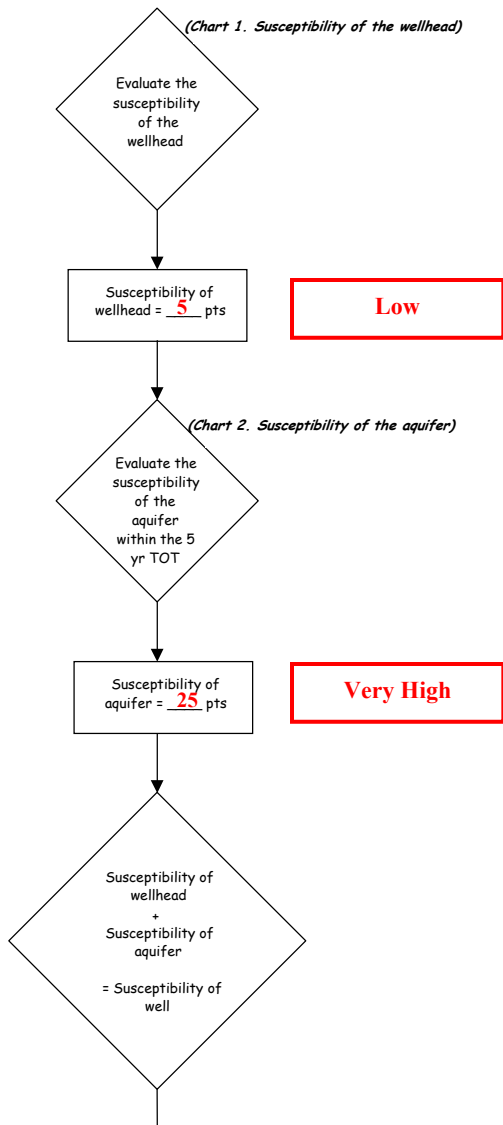


Chart 7. Contaminant risks for Matanuska Assembly of God – Volatile Organic Chemicals

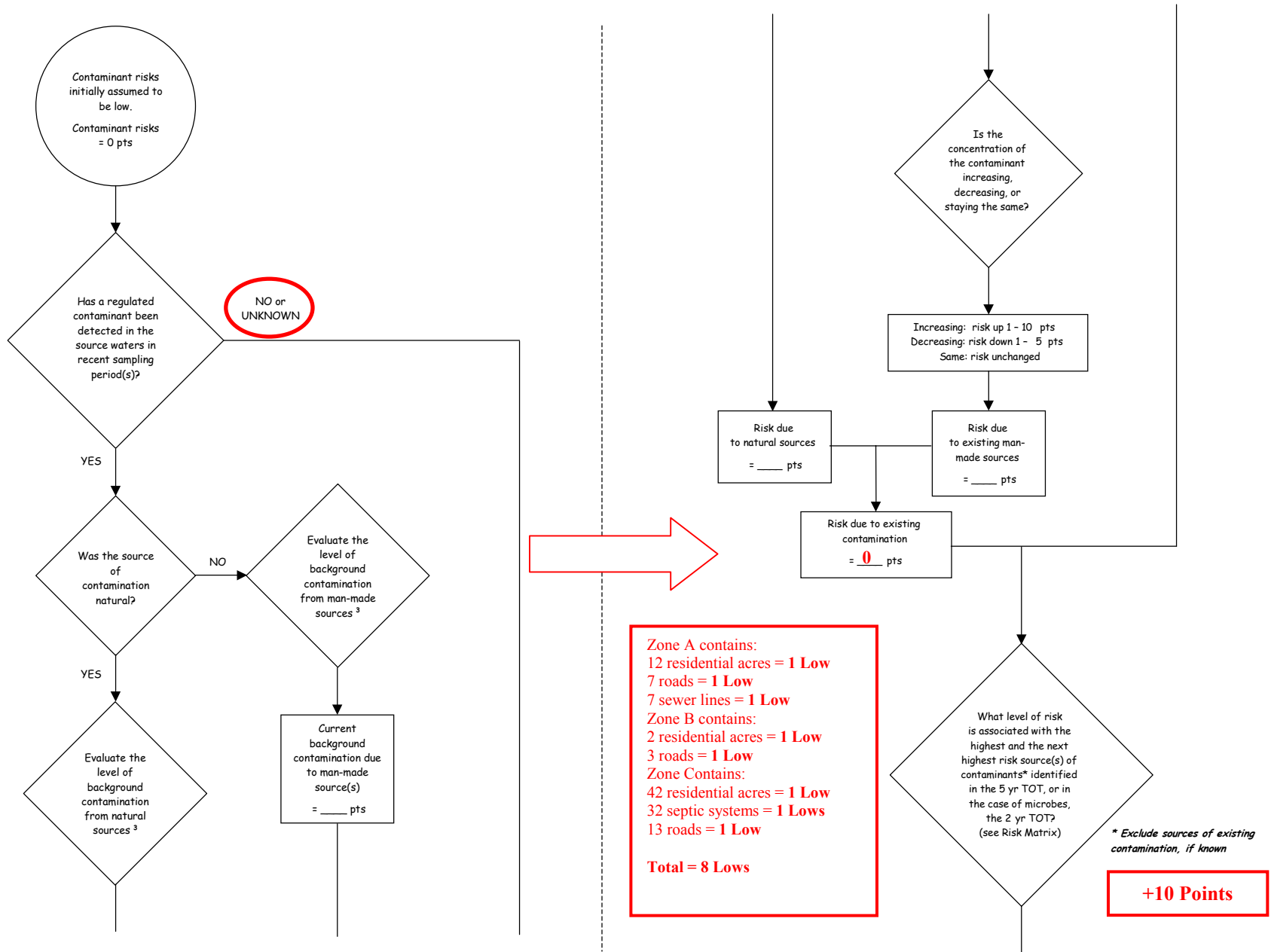
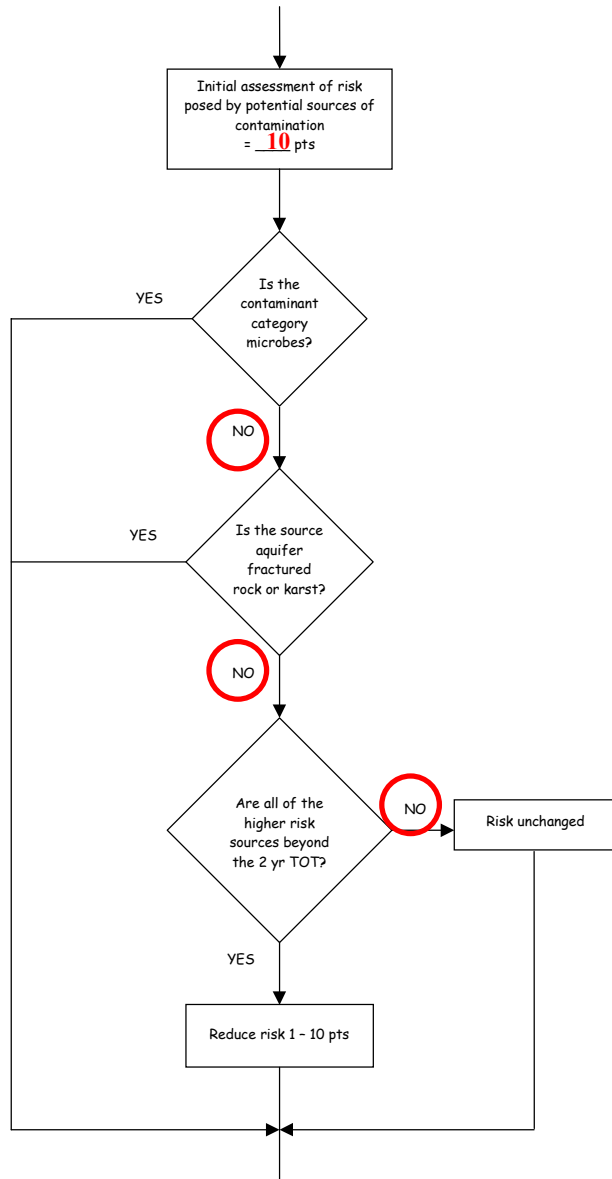


Chart 7. Contaminant risks for Matanuska Assembly of God – Volatile Organic Chemicals (Continued)



Residential acres, septic systems, roads and sewer lines
+2 Points

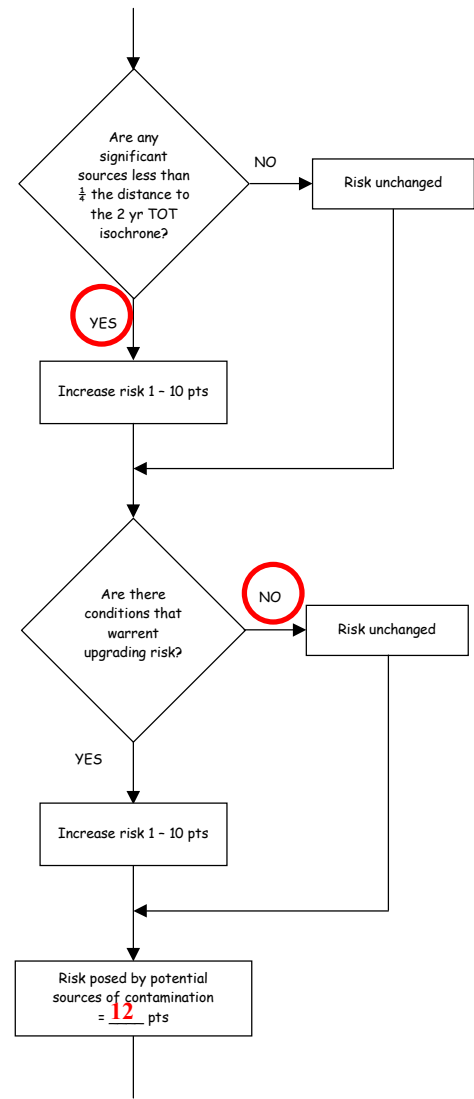
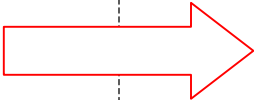


Chart 7. Contaminant risks for Matanuska Assembly of God – Volatile Organic Chemicals (Continued)

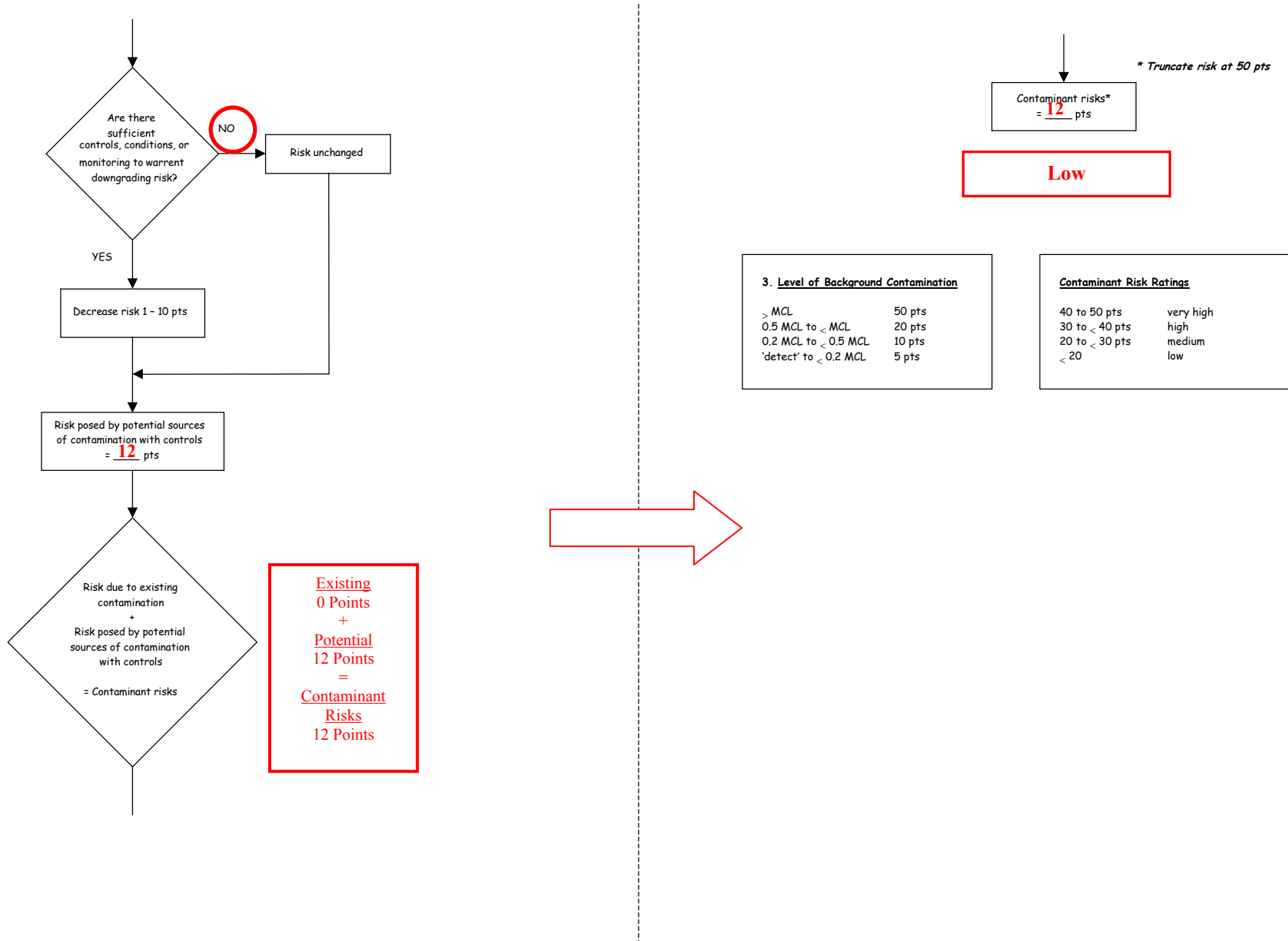


Table 3. Risk Matrix for Contaminant Sources for Matanuska Assembly of God – Volatile Organic Chemicals

Level of Risk Associated with the Highest Risk Sources

7 sewerlines, 14 roads, and 56 acres of residential area and 32 septic systems	LOW 10 pts	MEDIUM 20 pts	HIGH 30 pts	VERY HIGH 40 pts
Low	> 10 sources + 10 pts	> 10 sources + 5 pts	> 20 sources + 5 pts	---
Medium	---	> 2 sources + 5 pts	> 5 sources + 5 pts	> 10 sources + 5 pts
High	---	---	1 source + 10 pts	> 2 sources + 10 pts
Very High	---	---	---	1 source + 10 pts

Chart 8. Vulnerability analysis for Matanuska Assembly of God – Volatile Organic Chemicals

