

# Hydrogeologic Susceptibility and Vulnerability Assessment for Palmer Church of God, Inc. Drinking Water Well, Palmer, Alaska

DRINKING WATER PROTECTION PROGRAM REPORT 106

---

September 2001

# Hydrogeologic Susceptibility and Vulnerability Assessment for Palmer Church of God, Inc. Drinking Water Well, Palmer, Alaska

By Michael Baxter, B.E.S.T. Resource

---

DRINKING WATER PROTECTION PROGRAM REPORT 106

## CONTENTS

	Page		Page
Executive Summary	1	Inventory of Potential and Existing	
Introduction	1	Contaminant Sources	3
Description of the Matanuska – Susitna		Ranking of Contaminant Risks	3
Valley, Alaska	1	Vulnerability of Palmer Church of God	
Palmer Church of God Public Water Source	2	Drinking Water Source	4
Assessment/Protection Area for Palmer Church of God		Summary	5
Drinking Water Source	2	References Cited	6

## TABLES

TABLE	1. Natural Susceptibility - Susceptibility of the Wellhead and Aquifer to Contamination	4
	2. Contaminant Risks	4
	3. Overall Vulnerability of Palmer Church of God Public Drinking Water Source to Contamination	5

## ILLUSTRATIONS

FIGURE	1. Index map showing the location of Matanuska River Task Order Area	
--------	--	--

## APPENDICES

APPENDIX	A. Palmer Church of God Drinking Water Protection Area (Map 1)
	B. Contaminant Source Inventory for Palmer Church of God (Table 1) Contaminant Source Inventory and Risk Ranking for Palmer Church of God– Bacteria and Viruses (Table 2) Contaminant Source Inventory and Risk Ranking for Palmer Church of God– Nitrates/Nitrites (Table 3) Contaminant Source Inventory and Risk Ranking for Palmer Church of God– Volatile organic chemicals (Table 4)
	C. Palmer Church of God Drinking Water Protection Area and Potential and Existing Contaminant Sources (Map 2)
	D. Vulnerability Analysis for Contaminant Source Inventory and Risk Ranking for Palmer Church of God Public Drinking Water Source (Chart 1 – Chart 8 and Table 1 – Table 3)

# Hydrogeologic Susceptibility and Vulnerability Assessment for Palmer Church of God Public Drinking Water Source, Palmer, Alaska

By Michael Baxter, B.E.S.T. Resource

## Drinking Water Protection Program Alaska Department of Environmental Conservation

### EXECUTIVE SUMMARY

The Palmer Church of God is a Class B (transient/noncommunity) drinking water source consisting of one well. Identified potential and current sources of contaminants for Palmer Church of God include: septic systems, sewerlines, roads and residential acres. This identified potential and existing source of contamination is considered a source of bacteria and viruses, nitrates and/or nitrites, and volatile organic chemicals. Overall, Palmer Church of God public water source received a vulnerability rating of **Medium** for bacteria and viruses, nitrates and/or nitrites, and **Low** for volatile organic chemicals.

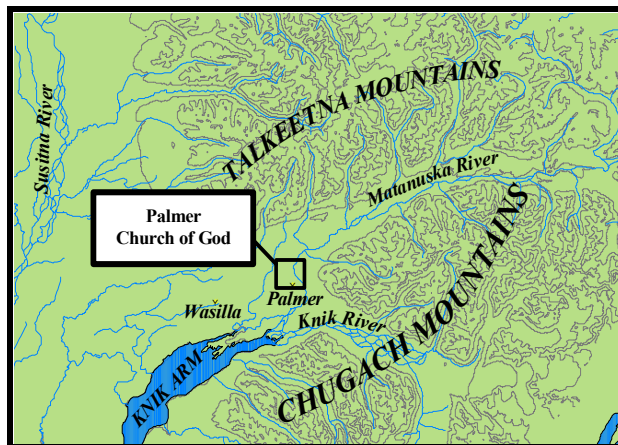


Figure 1. Index map showing the location of well assessment

### INTRODUCTION

The purpose of this environmental assessment is to provide public water system owners/operators, communities, and local governments with information they can use to preserve the quality of Alaska's public drinking water supplies. This assessment was completed for the Palmer Church of God source of public drinking water. This source consists of one well in the Palmer area (Figure 1). This assessment, known under the Alaska Drinking Water Protection Program as

the *Source Water Assessment*, has combined a review of the natural hydrogeologic sensitivity with potential and existing contaminant risks to arrive at an overall vulnerability of the drinking water source to contamination. This assessment has been completed as a basis for local voluntary protection efforts and to assist agencies in their efforts to reduce risk to this public drinking water supply.

### DESCRIPTION OF THE PALMER-AREA, ALASKA

#### Location

The Matanuska-Susitna Valley is part of the lowland lying about 50 miles north of Anchorage in south-central Alaska. The well described in this report is part of the Matanuska River Task Order Area. This study area is roughly bounded on the north by the Talkeetna Mountains; on the west by Wasilla Creek; on the south by the Knik River; and on the east by the Chugach Mountains. The area covers approximately 150 square miles.

#### Climate

The climate of the Matanuska-Susitna Valley is the result of a combination of marine and continental influences. The climate is somewhat transitional in that it does not experience large daily and annual temperature fluctuations like those experienced in the interior of Alaska nor does it experience high amounts of precipitation typified by gulf coast regions. Mean annual precipitation is approximately 15 inches per year. On the average, the Valley receives a total snow accumulation of 58 inches per year. Precipitation generally increased inland toward the Talkeetna Mountains where annual precipitation may exceed 60 inches per year [Barnwell, George, Dearborn, Weeks, and Zenone, 1972]. Mean daily temperature ranges from 67° F during July to 5° F in January [Western Regional Climate Center, 2000].

#### Physiography and Groundwater Conditions

The Matanuska-Susitna Valley is bounded by rugged

mountains that rise abruptly above its floor. The Chugach Mountains at the southern edge of the valley reach altitudes greater than 6300 feet. These mountains are composed primarily of metamorphosed sedimentary marine and volcanic rocks, and greenstone of Mesozoic age. Along the northern edge of the valley peaks in the Talkeetna Mountains reach altitudes of 3000 to 5000 feet. The Talkeetna Mountains are composed mainly of igneous rocks, chiefly granitic intrusives (Mesozoic?) and subordinate lavas and tuffs; Cretaceous and Tertiary sedimentary rocks form the south flank of the mountains. Although the altitude of the valley floor ranges from sea level at Knik Arm to 1000 feet at the base of Wishbone Hill, the local relief is commonly not more than 100 to 200 feet.

The area is drained by the Matanuska and Knik Rivers. These rivers are braided glacial outwash streams having wide floodplains. Drainage is poor in many interstream tracts resulting in large areas of swampy ground with shallow lakes occupying depressions.

The Matanuska-Susitna Valley is floored with unconsolidated deposits, chiefly glacial drift, that represents several episodes of glacial advances and retreats. The drift includes till, outwash stream deposits, and estuarine and lake deposits. Physiographic features formed by these deposits in or adjacent to the study area include end moraine, lateral moraines, eskers, crevasses fillings, and other pitted features, river terraces, outwash floodplains and an extensive estuarine flat.

The glacial till and bedrock form aquifers of minor importance. The chief hydrologic significance of the till is in confining the artesian aquifer. Generally, the till is poorly permeable, although locally thin layers of sand may yield small quantities of water. Till that is present at or near the land surface in much of the area makes the acquisition of shallow groundwater difficult. The bedrock also is poorly permeable. It yields water only from fractures, whose location and frequency cannot be easily predicted.

The chief aquifers are composed of outwash sand and gravel laid down by melt-water streams or in lakes. The outwash deposits are of two chief forms. The first consists of sheetlike deposits that lie just beneath the ground surface. These deposits range in thickness from a few feet to more than 100 feet. They typically rest on till of bedrock. The water in these deposits is unconfined. The other outwash deposits are buried beneath till. They are known to be as much as 50 to 60 feet thick, and probably are considerably thicker in some places. They commonly contain confined, or artesian, groundwater. Well logs and data from

pumping tests suggest that outwash sand and gravel form a continuous or nearly continuous sheet in an area of more than 10 square miles north and west of Palmer.

Recharge of the groundwater is chiefly from precipitation but it is likely that only a small proportion of the annual precipitation reaches the water body. During very dry seasons conspicuous declines in of water levels occur in many wells. Along the mountain fronts, groundwater seeps from fractures in bedrock into the sediments. At these higher elevations, rain and snowmelt also enter the sediments. Lastly, aquifers may be recharged by streams where surface water percolates into surrounding permeable sediments (losing reaches of streams). This is the case for the water-table aquifers in the terrace south of Palmer and in the Bodenbergt Butte area, which receive underground flow from the Matanuska River. Groundwater flow in the confined aquifers is generally from the north and north-northwest. The direction of groundwater flow in the upper unconfined aquifer is more variable due to the influence from surficial topography as well as its close connection with surface water bodies.

#### **PALMER CHURCH OF GOD PUBLIC WATER SOURCE**

Palmer Church of God public water source is a Class B (transient/noncommunity) water source, which is privately owned and operated. The source consists of one well south of Palmer on the Glennallen highway and is at an elevation of 50 feet above sea level. The well is located on the north of the Glennallen highway across from the Alaska State Fair Grounds. According to the well log, the Palmer Church of God's grouting is unknown, but is functioning properly. The well penetrates gravel and silty sand with two clay layers to 101 feet below land surface. The well screening is unknown and has a static water level of 76 feet below land surface at the time of drilling (10/13/83).

The water from Palmer Church of God consists of hydropneumatic pressure tanks, jet pump and atmospheric storage tanks. This water source operates year round. The Palmer Church of God drinking water source collectively serves approximately 100 residents and non-residents through one service connections.

#### **ASSESSMENT AND PROTECTION AREA FOR PALMER CHURCH OF GOD DRINKING WATER SOURCE**

The Drinking Water Protection and Assessment Area that has been established for Palmer Church of God is the area that is most sensitive to contamination. This area has served as a basis for assessing the risk of the

drinking water source to contamination. This zone around the drinking water source is the most critical area for the preservation of the quality of the drinking water for this source. For simplicity, this area will be known as your Drinking Water Protection Area and will serve as the area of focus for voluntary protection efforts.

Conceptually, groundwater enters the aquifer systems along the front range of the Talkeetna and Chugach Mountains and flows toward Cook Inlet. An analytical calculation was used to calculate the size and shape of the area that contributes water to the well. The input parameters describing the attributes of the aquifer in this calculation were adopted from the U.S. Geological Survey (*Patrick, Brabets, and Glass, 1989*). This analytical calculation was used as a guide as the first step in establishing the protection area for Palmer Church of God. Additional methods were further employed to take into account any uncertainties in groundwater flow and aquifer characteristics to arrive at a meaningful and conservative protection area with respect to public health (Please refer to the Guidance Manual for Class B Public Water Systems for additional information).

The Drinking Water Protection Areas established for wells by the Alaska Department of Environmental Conservation (ADEC) are separated into zones. These zones correspond to a time-of-travel. Time-of-travel is the time required for water to move in the saturated zone of the ground from a specific point to the well. The Drinking Water Protection Areas for Palmer Church of God contains four zones, Zone A, Zone B, Zone C and Zone D (See Map 1 in Appendix A). Zone A corresponds to the area between the well and the distance equal to  $\frac{1}{4}$  of the distance of the 2-year time-of-travel. Depending on where a contaminant source is located within Zone A, travel time for a contaminant to the well may be on the order of several days to several hours. Zone A also extends down gradient from the well to take into account the area of the aquifer that is influenced by pumping of the well.

The Zone B protection area for Palmer Church of God corresponds to a time-of-travel of less than two years and extends toward to base of the Talkeetna Mountains. Zone C protection area extends from Zone B to Zone D, which extends to the top of the watershed divide at the Talkeetna Mountains.

## **INVENTORY OF POTENTIAL AND EXISTING CONTAMINANT SOURCES**

The Drinking Water Protection Program has completed an inventory of potential and existing sources of

contamination within Palmer Church of God Drinking Water Protection Area. This survey was completed through a search of ADEC records and other publicly available information.

Potential sources of contamination to drinking water supplies cover a wide range of categories and types. Potential drinking water contaminants are found within agricultural, residential, commercial, and industrial areas, but can also occur within areas that have little or no development.

For the basis of this assessment and all Class B public water system assessments, three categories of drinking water contaminants were inventoried. They include:

- Bacteria and viruses;
- Nitrates and/or nitrites;
- Volatile organic chemicals;

Map 1 in Appendix C depicts the Contaminant Source Inventory for Palmer Church of God. Inventoried potential sources of contamination within Zones A through Zone C were associated with residential activity. Zone D contains only natural wilderness and was not considered in determining the vulnerability of this drinking water source to contamination. Below is a summary of the contaminant sources inventoried within the Palmer Church of God protection area:

- Roads
- Sewerlines
- Septic systems
- Residential lawn and garden;

This potential contaminant source presents risks for all three categories of drinking water contaminants for Palmer Church of God drinking water source.

## **RANKING OF CONTAMINANT RISKS**

Potential and existing sources of contamination have been identified, sorted, and ranked according to what type and level of risk they represent. Ranking of contaminant risks for a “potential” or “existing” source of contamination is a function of toxicity and volumes of specific contaminants associated with that source. Contaminant risks are further a function of the number and density of those types of contaminant sources as well as the proximity of those sources to the well.

## VULNERABILITY OF PALMER CHURCH OF GOD DRINKING WATER SOURCES

Vulnerability of a drinking water source to contamination is a combination of two factors:

- natural susceptibility; and
- contaminant risks.

Each of the three categories of drinking water contaminants has been analyzed and an overall vulnerability score of 0 to 100 is ultimately assigned:

$$\begin{array}{r}
 \text{Natural Susceptibility (0 – 50 points)} \\
 + \\
 \text{Contaminant Risks (0 – 50 points)} \\
 = \\
 \text{Vulnerability of the} \\
 \text{Drinking Water Source to Contamination (0 – 100).}
 \end{array}$$

A score for the Natural Susceptibility is achieved by analyzing the properties of the well and the aquifer.

$$\begin{array}{r}
 \text{Susceptibility of the Wellhead (0 – 25 Points)} \\
 + \\
 \text{Susceptibility of the Aquifer (0 – 25 Points)} \\
 = \text{Natural Susceptibility (Susceptibility of the Well)} \\
 \text{(0 – 50 Points)}
 \end{array}$$

Palmer Church of God is completed in a confined or semi-confined aquifer setting. The well penetrates 101 feet of sand and gravel layered with two clay bearing layers. These layers are encountered at 18 and 30 feet below land surface may provide somewhat of a protective barrier for the movement of contaminants in the subsurface. However, near the base of the Talkeetna Mountains, the clay and till layers tend to be discontinuous and thin toward the mountains. Therefore, contaminants that enter the subsurface near the base of the mountains may enter the confined aquifer uninhibited by the absence of any protective layer. This well appears to be properly grouted as indicated previously from information obtained from ADEC records. The absence of grouting can promote the transport of contaminants along the well casing. Combining the susceptibility of the wellhead and the aquifer to contamination leads to a score (0 – 50 points) and rating of overall Susceptibility (See Appendix D). Table 1 shows the overall Susceptibility score and rating for Palmer Church of God.

**Table 1. Natural Susceptibility - Susceptibility of the Wellhead and Aquifer to Contamination**

	Score	Rating
Susceptibility of the Wellhead	5	Low
Susceptibility of the Aquifer	16	High
Natural Susceptibility	21	Medium

Contaminant risks to a drinking water source depend on the type, number or density, and distribution of contaminant sources. Septic systems, sewerlines, roads and residential acres contribute the highest and only identified risks for potential contamination to the Palmer Church of God source of public drinking water.

A score (0 – 50 points) and rating of Contaminant Risks (See Appendix D) is assigned based on the findings of the Contaminant Source Inventory (Appendix B - Table 1 – Table 7). This portion of the analysis examines any existing or historical contamination that has been detected at the drinking water source through routine sampling. It also reviews contamination that has or may have occurred but has not arrived or been detected at the well. Table 2 summarizes the Contaminant Risks for each category of drinking water contaminants.

**Table 2. Contaminant Risks**

Contaminant Risks	Score	Rating
Bacteria and Viruses	22	Medium
Nitrates and/or Nitrites	26	Medium
Volatile Organic Chemicals	12	Low

Appendix D contains eight charts, which together form the ‘Vulnerability Analysis’ for a source water assessment for a public drinking water source. Chart 1 analyzes the ‘Susceptibility of the Wellhead’ to contamination by looking at the construction of the well and its surrounding area. Chart 2 analyzes the ‘Susceptibility of the Aquifer’ to contamination by looking at the naturally occurring attributes of the water source and influences on the groundwater system that might lead to contamination. Chart 3 analyzes ‘Contaminant Risks’ for the drinking water source with respect to bacteria and viruses. The ‘Contaminant Risks’ portion of the analysis considers potential sources of contaminants as well as a review of contamination that has or may have occurred but has not arrived or been detected at the well. Lastly, Chart 4 contains the ‘Vulnerability Analysis for Bacteria and Viruses’. Charts 5 through 8 contain the Contaminant

Risks and Vulnerability Analysis for nitrates and nitrites and volatile organic chemicals, respectively.

Vulnerability of the drinking water source to contamination is the combination of susceptibility of the aquifer and the well with contaminant risks. Table 3 contains the overall vulnerability scores (0 – 100) and ratings for each of the three categories of drinking water contaminants (See Appendix D). Note: scores are rounded off to the nearest five.

**Table 3. Overall Vulnerability of Palmer Church of God Public Drinking Water Source to Contamination by Category**

Category	Score	Rating
Bacteria and Viruses	45	Medium
Nitrates and Nitrites	45	Medium
Volatile Organic Chemicals	35	Low

Tables 2 through 4 in Appendix B contain the ranking of potential and existing sources of contamination with respect to bacteria and viruses, nitrates and/or nitrites, and volatile organic chemicals.

The roads, residential acres, sewerlines and septic systems in Zone A through Zone C are the factors determining contaminant risks for all categories of contaminants (See “Overall Rank after Analysis” in Table 2 – 4 of Appendix B).

Bacteria and Viruses were not detected in the source waters of Palmer Church of God. Overall, contaminant risk for the bacteria and viruses is medium due to the roads, residential acres, sewerlines and septic systems present up gradient from the well. This rating combined with the susceptibility of the well yields an overall rating of medium for this category.

Sampling history of Palmer Church of God source waters indicate concentrations of nitrate (See Chart 6 – Contaminant Risks for Nitrates/Nitrites in Appendix D). Existing nitrate contamination is approximately 19.6 % of the allowable limit (MCL) for this contaminant. Due to the high solubility and weak retention by soil, nitrates are very mobile in soil, moving at approximately the same rate as water. The current nitrate concentration in Palmer Church of God remains at safe levels with respect to human health.

Overall, contaminant risk for the nitrate/nitrite category is medium due to the roads, residential acres, sewerlines and septic systems present up gradient from the well. Combining potential nitrate and/or nitrite contamination risk with the susceptibility of the well yields an overall

medium vulnerability to contamination in this category.

Volatile Organic Chemicals were not detected in the source waters of Palmer Church of God. Overall, a contaminant risk for the volatile organic chemicals category is low due to the roads, septic systems, residential acres and sewerlines present up gradient from the well. Combining the contaminate risk with the susceptibility of the well yields an overall low vulnerability to contamination for Volatile Organic Chemicals.

## SUMMARY

A *Source Water Assessment* has been completed for the Palmer Church of God source of public drinking water. The overall vulnerability of this source to contamination is **Medium** for bacteria and viruses, nitrates and/or nitrites, and **Low** for volatile organic chemicals. This assessment of contaminant risks can be used as a foundation for local voluntary protection efforts as well as a basis for the continuous efforts on the part of the Palmer Church of God to protect public health. It is anticipated that *Source Water Assessments* will be updated every five years to reflect any changes in the vulnerability and/or susceptibility of the public drinking water source.



## REFERENCES CITED

Jakola, J.B., Munter, J.A., and Evans, J.G., 1991, Ground-water resources of the Palmer-big Lake area, Alaska: a conceptual model. Division of Geological & Geophysical Surveys Reported of Investigations 90-4, State of Alaska Department of Natural Resources, Fairbanks, AK.

Trainer, F.W., 1960, Geology and Groundwater Resources, Matanuska Valley, Alaska, U.S. Geological Survey Water Supply Paper 1494 U.S. Printing Office, Washington, D.C.

Western Regional Climate Center, 2000, August 24, Web extension to the *Western Regional Climate Center*  
[WWW document]. URL [http://www.uaa.alaska.edu/enri/ascc\\_web/ascc\\_home.html](http://www.uaa.alaska.edu/enri/ascc_web/ascc_home.html) .

## **APPENDIX A**

### **Palmer Church of God Drinking Water Protection Area**



## **APPENDIX B**

### **Contaminant Source Inventory and Risk Ranking for Palmer Church of God**

Table 1

**Contaminant Source Inventory for  
Palmer Church of God**

PWSID 227424.001

Contaminate Source Category	Contaminant Source ID	CS ID Tag	Zone	Location	Map	Comments
Lawns and gardens	R1	R1-1	A	Located west of the well	2	Zone A contains 1 acre
Lawns and gardens	R1	R1-2	B	Located east of the well	2	Zone B contains 5 acres
Septic systems (serves one or more single-family homes)	R2	R2-1	A	Glenn Hwy	2	
Septic systems (serves one or more single-family homes)	R2	R2-2	B	Drift	2	
Septic systems (serves one or more single-family homes)	R2	R2-3	B	Rose	2	
Septic systems (serves one or more single-family homes)	R2	R2-4	B	Drift	2	
Highways and roads, dirt/gravel	X20	X20-1	A,B	Glenn Hwy	2	
Highways and roads, dirt/gravel	X24	X24-1	A	Blunck	2	
Highways and roads, dirt/gravel	X24	X24-2	A	Shooting Star	2	
Highways and roads, dirt/gravel	X24	X24-3	B	Forget me not	2	
Highways and roads, dirt/gravel	X24	X24-4	B	Snowdrift	2	
Highways and roads, dirt/gravel	X24	X24-5	B	Drift	2	
Highways and roads, dirt/gravel	X24	X24-6	C	Helen	2	
Highways and roads, dirt/gravel	X24	X24-7	C	Natasha	2	
Highways and roads, dirt/gravel	X24	X24-8	C	Pat-Mar	2	
Sewerlines and Lift Stations	D1	D1-1	A,B		2	Blunck, Shooting Star and Forget-me-not

Table 2

**Potential and Existing Sources of Contamination for  
Palmer Church of God  
Bacterias and Viruses**

PWSID 227424.001

<b>Contaminant Source Category</b>	<b>Contaminant Source ID</b>	<b>CS ID Tag</b>	<b>Zone</b>	<b>Risk Ranking for Analysis</b>	<b>Overall Rank for Analysis</b>	<b>Location</b>	<b>Map</b>	<b>Comments</b>
Sewerlines and Lift Stations	D1	D1-1	A,B	Medium	1	Arabian	2	Blunck, Shooting Star and Forget-me-not
Lawns and gardens	R1	R1-1	A	Low	2	Located west of the well	2	Zone A contains 1 acre
Septic systems (serves one or more single-family homes)	R2	R2-1	A	Very Low	3	Glenn Hwy	2	
Highways and roads, dirt/gravel	X20	X20-1	A,B	Very Low	4	Glenn Hwy	2	
Highways and roads, dirt/gravel	X24	X24-1	A	Very Low	5	Blunck	2	
Highways and roads, dirt/gravel	X24	X24-2	A	Very Low	6	Shooting Star	2	
Lawns and gardens	R1	R1-2	B	Low	7	Located east of the well	2	Zone B contains 5 acres
Septic systems (serves one or more single-family homes)	R2	R2-3	B	Very Low	8	Drift	2	
Septic systems (serves one or more single-family homes)	R2	R2-4	B	Very Low	9	Rose	2	
Highways and roads, dirt/gravel	X24	X24-3	B	Very Low	10	Drift	2	
Highways and roads, dirt/gravel	X24	X24-4	B	Very Low		Snowdrift	2	
Highways and roads, dirt/gravel	X24	X24-5	B	Very Low		Drift	2	
Highways and roads, dirt/gravel	X24	X24-6	C	Very Low		Helen	2	
Highways and roads, dirt/gravel	X24	X24-7	C	Very Low		Natasha	2	
Highways and roads, dirt/gravel	X24	X24-8	C	Very Low		Pat-Mar	2	

Table 3

**Potential and Existing Sources of Contamination for  
Palmer Church of God  
Nitrates and Nitrites**

PWSID 227424.001

Contaminant Source Category	Contaminant Source ID	CS ID Tag	Zone	Risk Ranking for Analysis	Overall Rank for Analysis	Location	Map	Comments
Sewerlines and Lift Stations	D1	D1-1	A,B	Medium	1	Arabian	2	Blunck, Shooting Star and Forget-me-not
Lawns and gardens	R1	R1-1	A	Low	2	Located west of the well	2	Zone A contains 1 acre
Septic systems (serves one or more single-family homes)	R2	R2-1	A	Very Low	3	Glenn Hwy	2	
Highways and roads, dirt/gravel	X20	X20-1	A,B	Very Low	4	Glenn Hwy	2	
Highways and roads, dirt/gravel	X24	X24-1	A	Very Low	5	Blunck	2	
Highways and roads, dirt/gravel	X24	X24-2	A	Very Low	6	Shooting Star	2	
Lawns and gardens	R1	R1-2	B	Low	7	Located east of the well	2	Zone B contains 5 acres
Septic systems (serves one or more single-family homes)	R2	R2-3	B	Very Low	8	Drift	2	
Septic systems (serves one or more single-family homes)	R2	R2-4	B	Very Low	9	Rose	2	
Highways and roads, dirt/gravel	X24	X24-3	B	Very Low	10	Drift	2	
Highways and roads, dirt/gravel	X24	X24-4	B	Very Low		Snowdrift	2	
Highways and roads, dirt/gravel	X24	X24-5	B	Very Low		Drift	2	
Highways and roads, dirt/gravel	X24	X24-6	C	Very Low		Helen	2	
Highways and roads, dirt/gravel	X24	X24-7	C	Very Low		Natasha	2	
Highways and roads, dirt/gravel	X24	X24-8	C	Very Low		Pat-Mar	2	

Table 4

**Potential and Existing Sources of Contamination for  
Palmer Church of God  
Volatile Organic Chemicals (VOCs)**

PWSID 227424.001

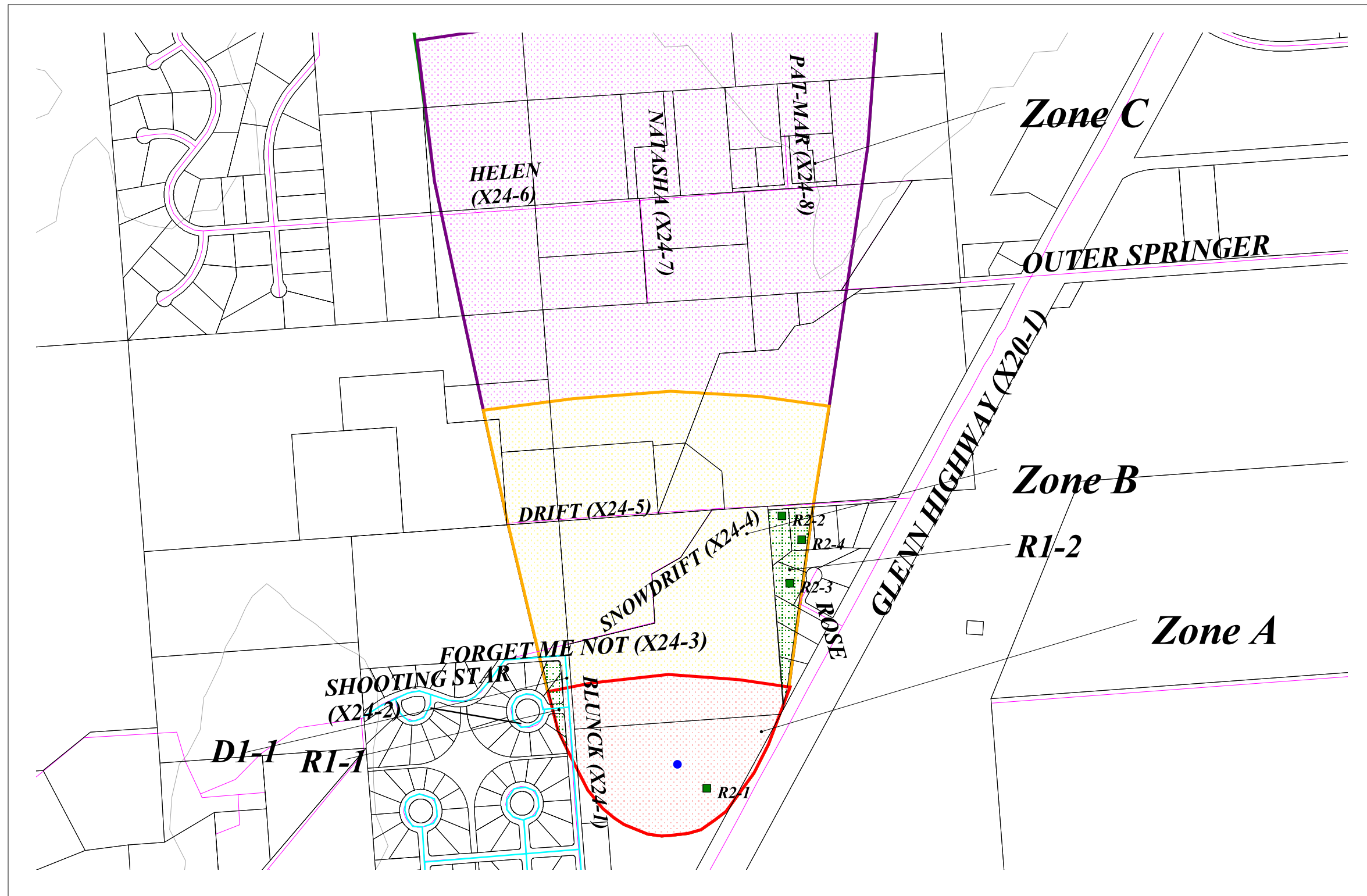
Contaminant Source Category	Contaminant Source ID	CS ID Tag	Zone	Risk Ranking for Analysis	Overall Rank for Analysis	Location	Map	Comments
Sewerlines and Lift Stations	D1	D1-1	A,B	Low	1	Arabian	2	Blunck, Shooting Star and Forget-me-not
Lawns and gardens	R1	R1-1	A	Low	2	Located west of the well	2	Zone A contains 1 acre
Septic systems (serves one or more single-family homes)	R2	R2-1	A	Very Low	3	Glenn Hwy	2	
Highways and roads, dirt/gravel	X20	X20-1	A,B	Very Low	4	Glenn Hwy	2	
Highways and roads, dirt/gravel	X24	X24-1	A	Very Low	5	Blunck	2	
Highways and roads, dirt/gravel	X24	X24-2	A	Very Low	6	Shooting Star	2	
Lawns and gardens	R1	R1-2	B	Low	7	Located east of the well	2	Zone B contains 5 acres
Septic systems (serves one or more single-family homes)	R2	R2-3	B	Very Low	8	Drift	2	
Septic systems (serves one or more single-family homes)	R2	R2-4	B	Very Low	9	Rose	2	
Highways and roads, dirt/gravel	X24	X24-3	B	Very Low	10	Drift	2	
Highways and roads, dirt/gravel	X24	X24-4	B	Very Low		Snowdrift	2	
Highways and roads, dirt/gravel	X24	X24-5	B	Very Low		Drift	2	
Highways and roads, dirt/gravel	X24	X24-6	C	Very Low		Helen	2	
Highways and roads, dirt/gravel	X24	X24-7	C	Very Low		Natasha	2	
Highways and roads, dirt/gravel	X24	X24-8	C	Very Low		Pat-Mar	2	









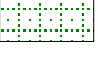




## **APPENDIX C**

### **Palmer Church of God Drinking Water Protection Area and Potential & Existing Contaminant Sources**

# Drinking Water Protection Areas Potential & Existing Sources of Contamination for Palmer Church of God



-  North
-  Public Water System Well
-  Zone A Protection Area  
Several Months to 2 Years  
Travel Time
-  Zone B Protection Area  
Less Than 2 Years  
Travel Time
-  Zone C Protection Area  
2 to 5 Years Travel Time
-  Roads (Paved X20)  
(Gravel X24)
-  Mat-Su Borough Parcel  
Boundaries
-  Elevation Contours
-  Lawn & Garden (R1)
-  Sewerlines (D1)
-  Residential Well &  
Septic Systems (R2)



PWSID 227424.001

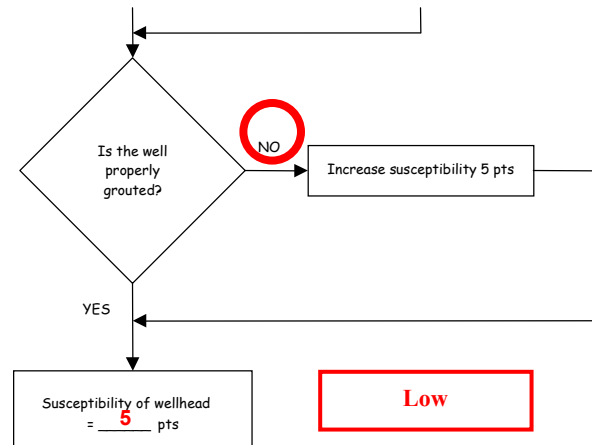
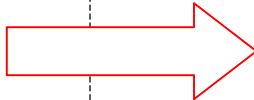
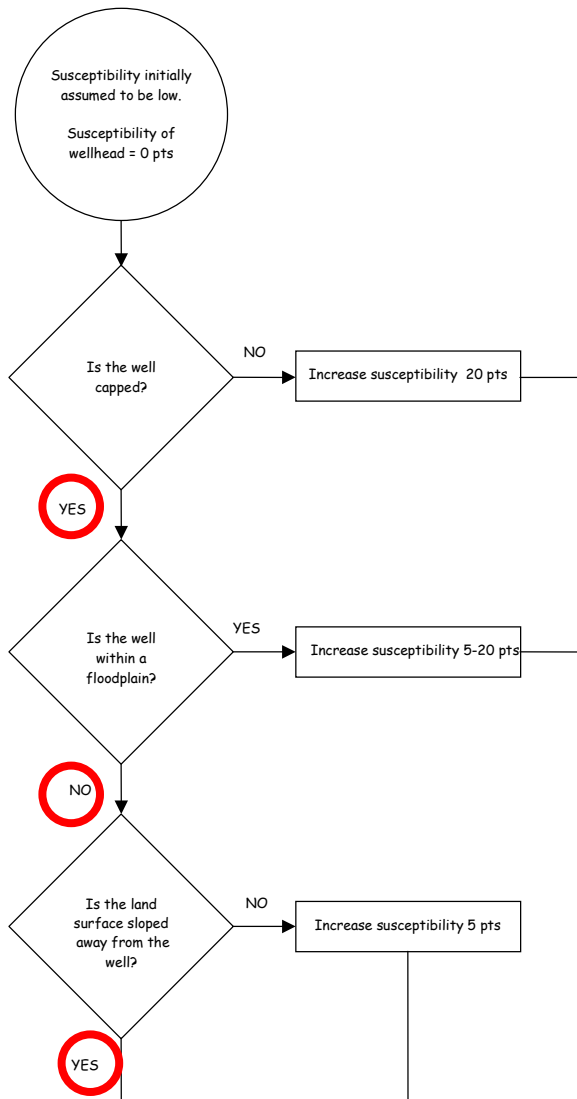
## Map 2

Prepared by: B.E.S.T. Resource

## **APPENDIX D**

### **Vulnerability Analysis for Palmer Church of God Public Drinking Water Source**

**Chart 1. Susceptibility of the wellhead – Palmer Church of God**



<u>Wellhead Susceptibility Ratings</u>	
20 to 25 pts	very high
15 to < 20 pts	high
10 to < 15 pts	medium
< 10	low

**Chart 2. Susceptibility of the aquifer – Palmer Church of God, Inc.**

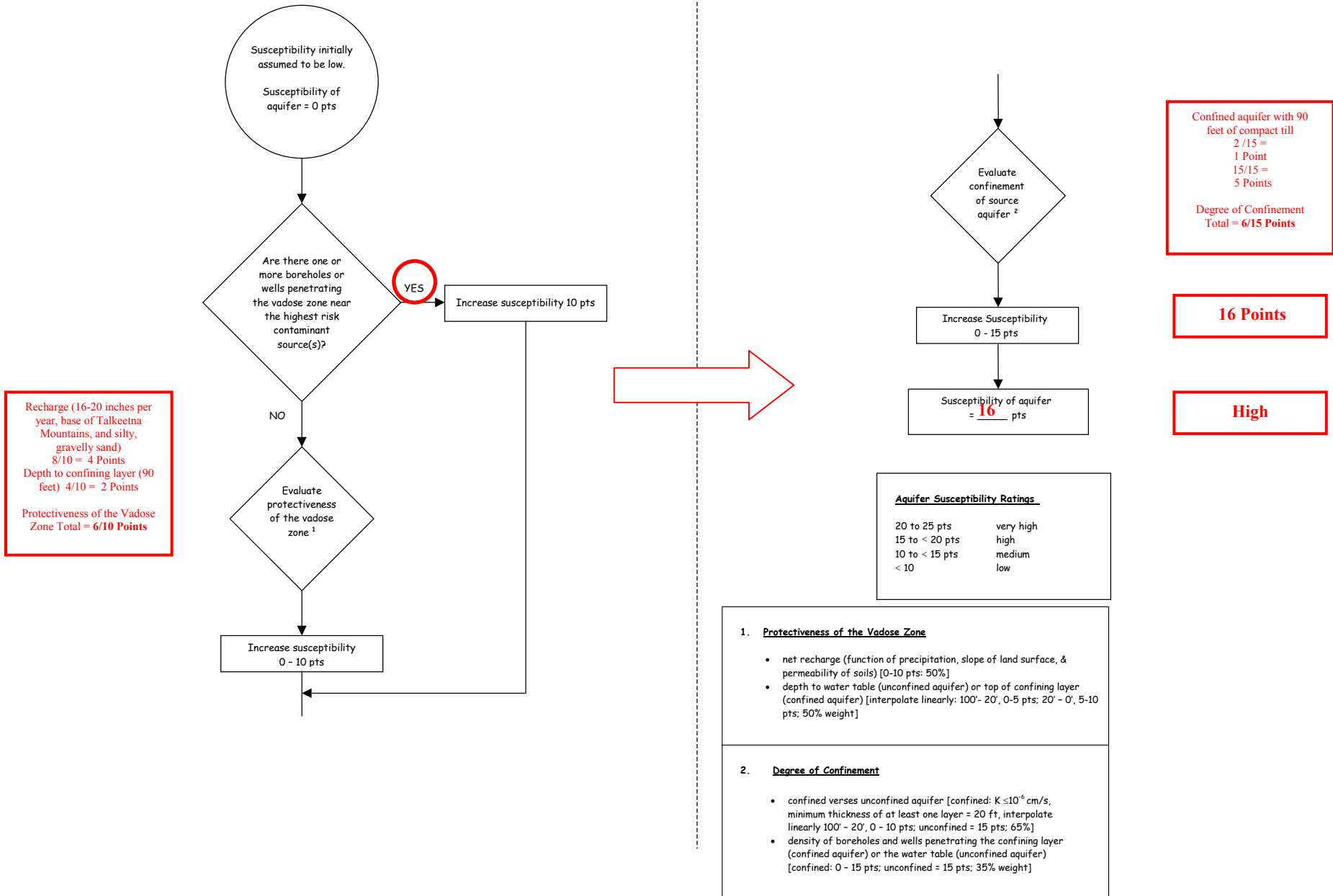


Chart 3. Contaminant risks for Palmer Church of God, Inc. – Bacteria & Viruses

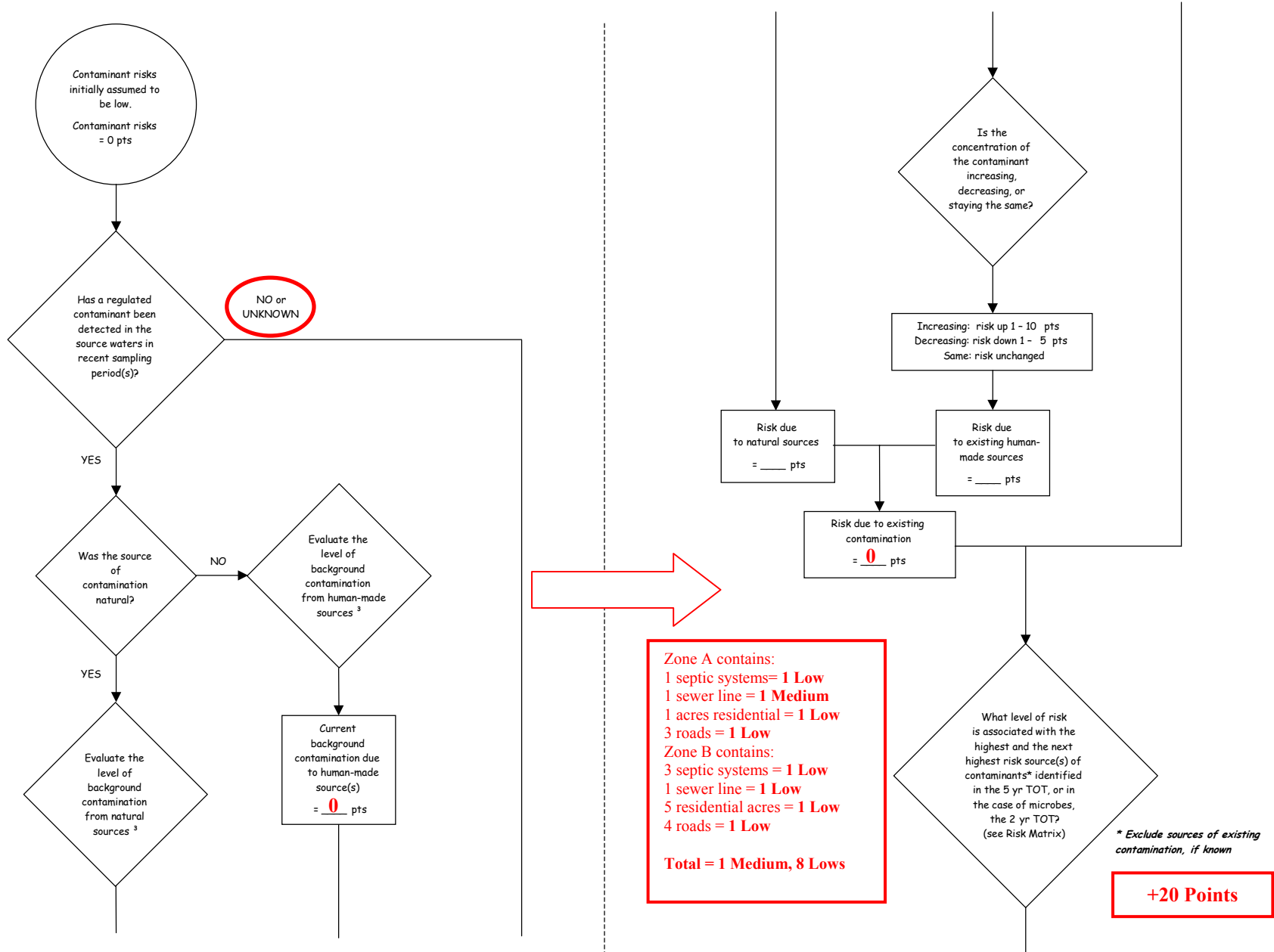


Chart 3. Contaminant risks for Palmer Church of God, Inc. – Bacteria & Viruses (Continued)

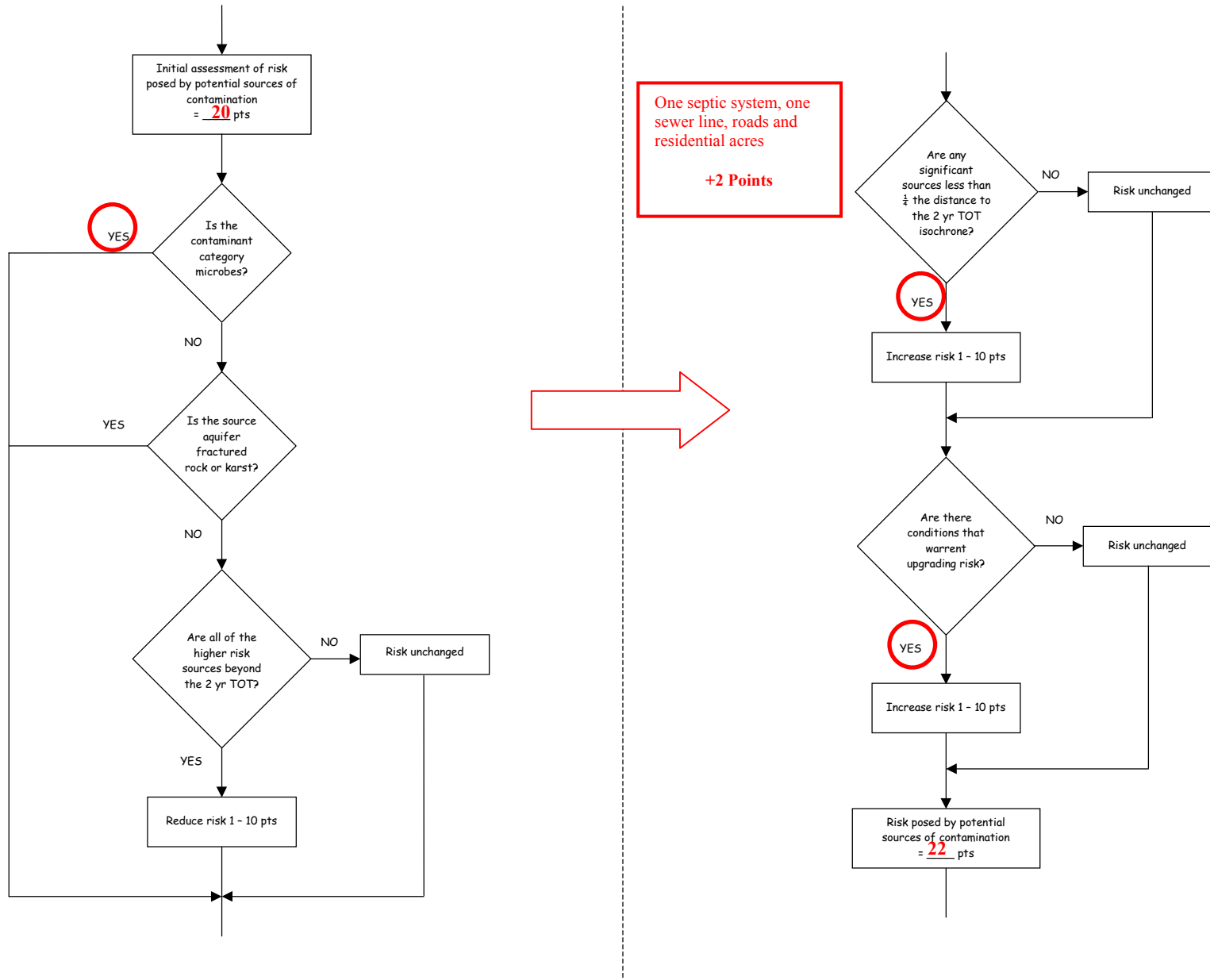
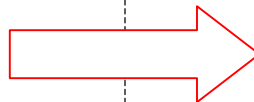
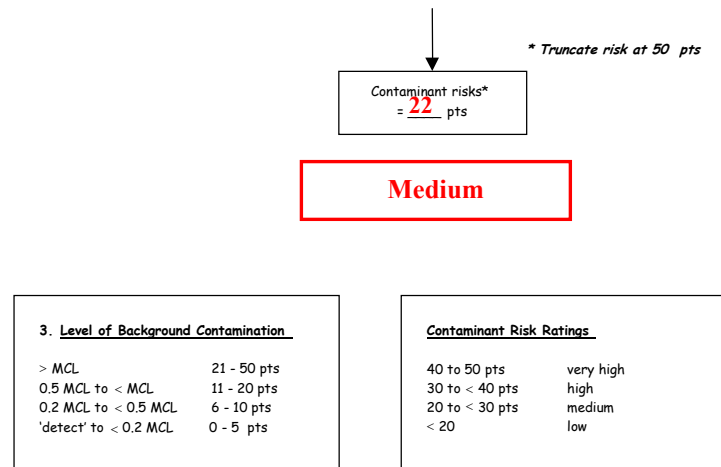
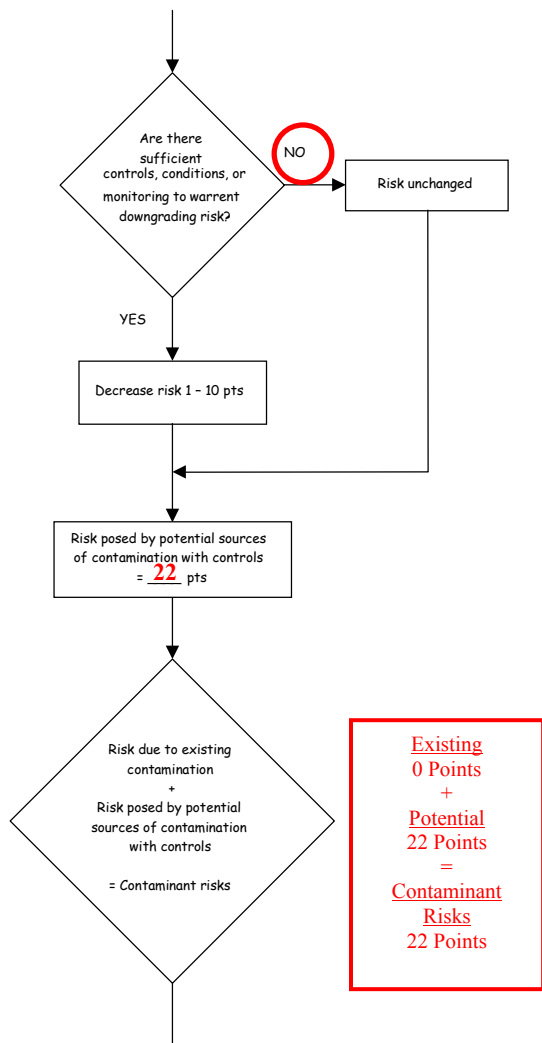


Chart 3. Contaminant risks for Palmer Church of God, Inc. – Bacteria & Viruses (Continued)





**Table 1. Risk Matrix for Contaminant Sources for Palmer Church of God, Inc. – Bacteria & Viruses**

**Level of Risk Associated with the Highest Risk Sources**

<b>Next Highest Risk Sources(s)</b>	4 residential septic systems, 2 sewerlines, 7 roads, and 6 acres of residential area	<b>LOW 10 pts</b>	<b>MEDIUM 20 pts</b>	<b>HIGH 30 pts</b>	<b>VERY HIGH 40 pts</b>
	<b>Low</b>	≥ 10 sources + 10 pts	≥ 10 sources + 5 pts	≥ 20 sources + 5 pts	—
	<b>Medium</b>	—	≥ 2 sources + 5 pts	≥ 5 sources + 5 pts	≥ 10 sources + 5 pts
	<b>High</b>	—	—	1 source + 10 pts	≥ 2 sources + 10 pts
	<b>Very High</b>	—	—	—	1 source + 10 pts

**Chart 4. Vulnerability analysis for Palmer Church of God– Bacteria & Viruses**

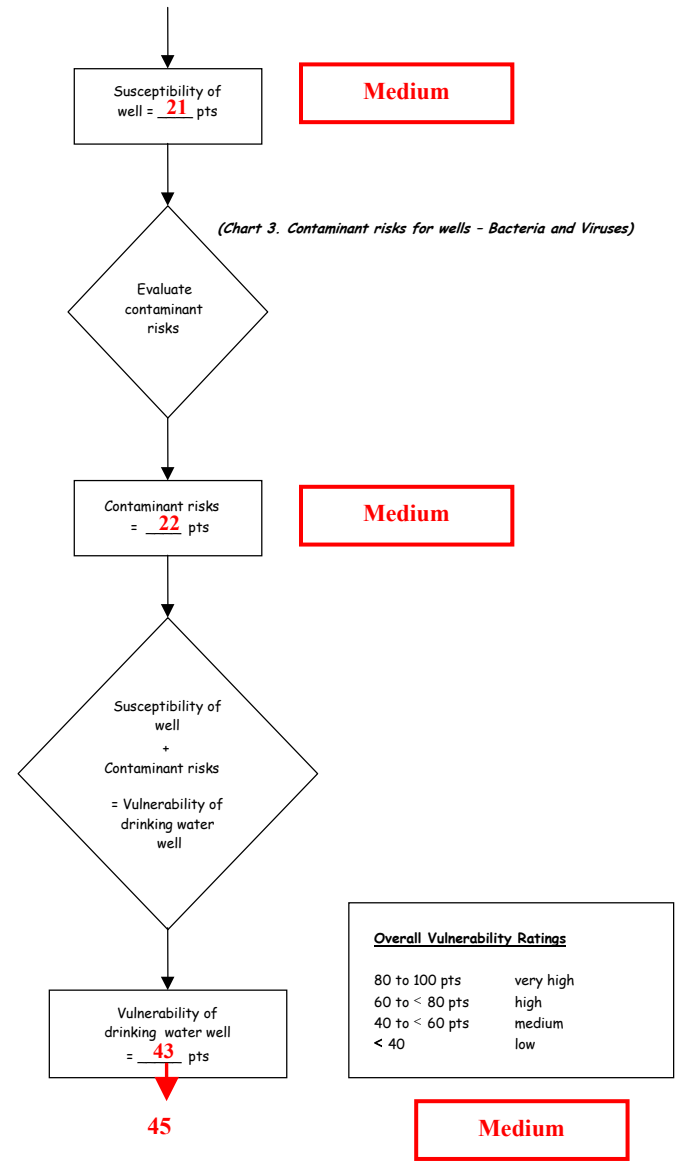
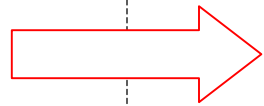
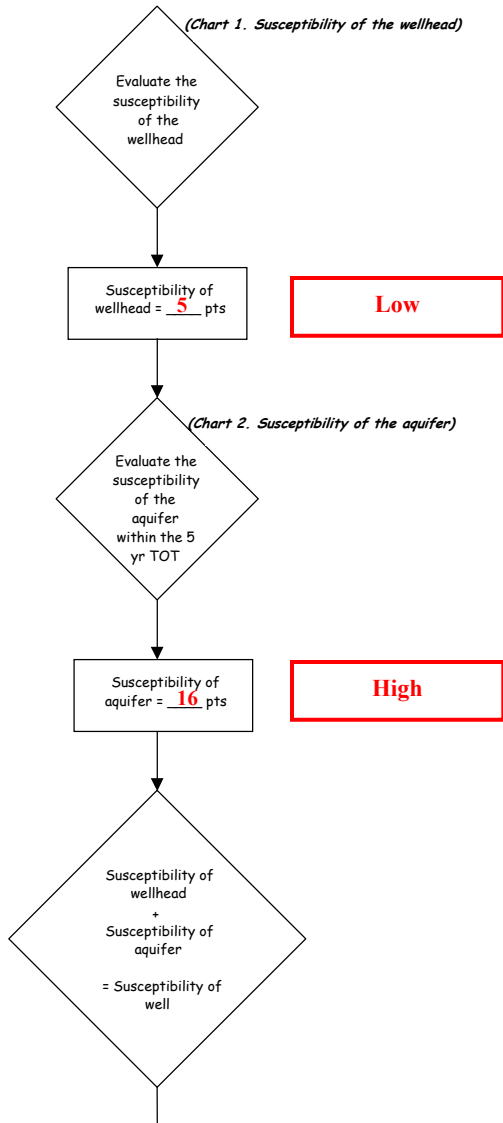


Chart 5. Contaminant risks for Palmer Church of God, Inc.– Nitrates and Nitrites

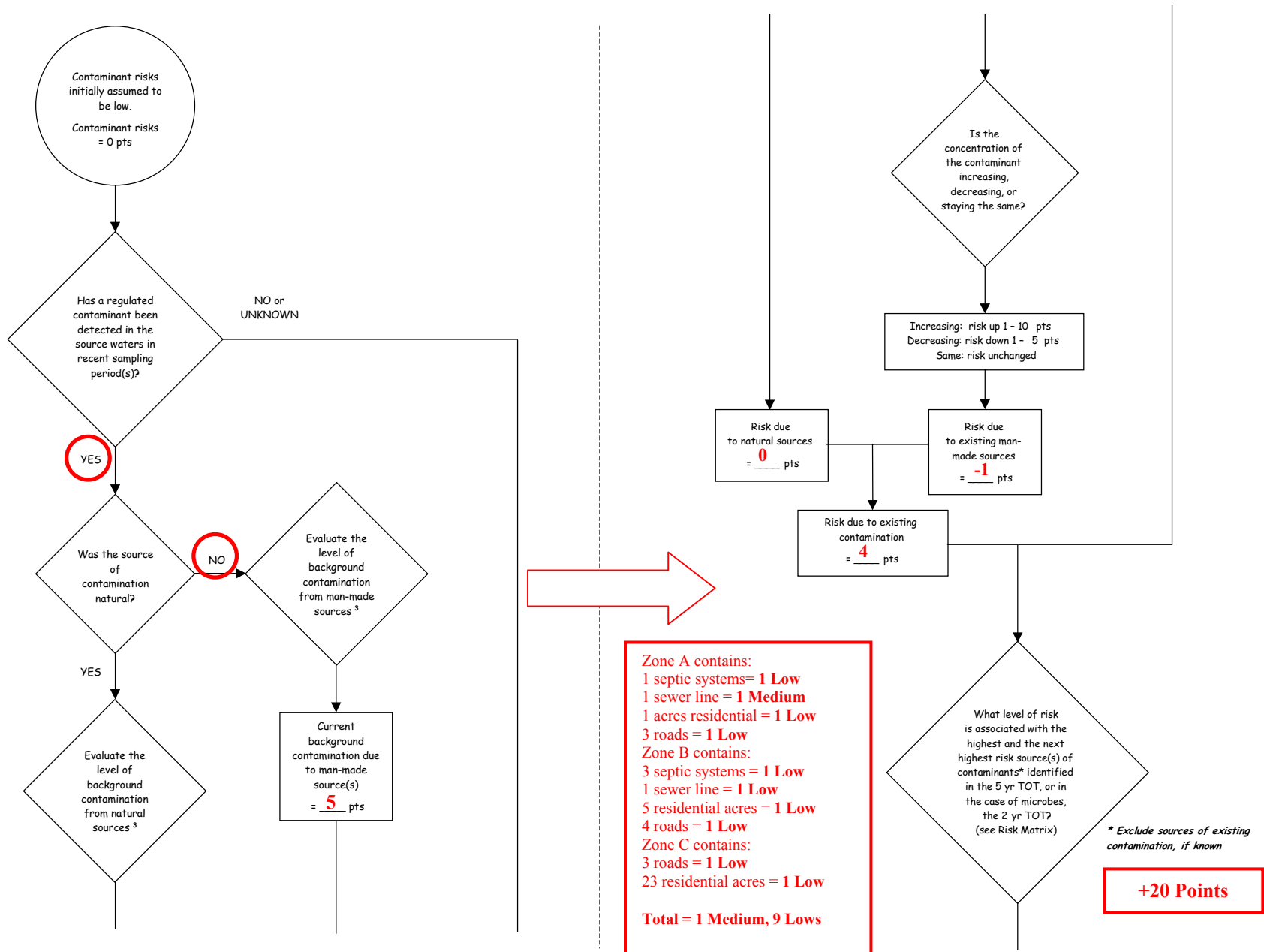
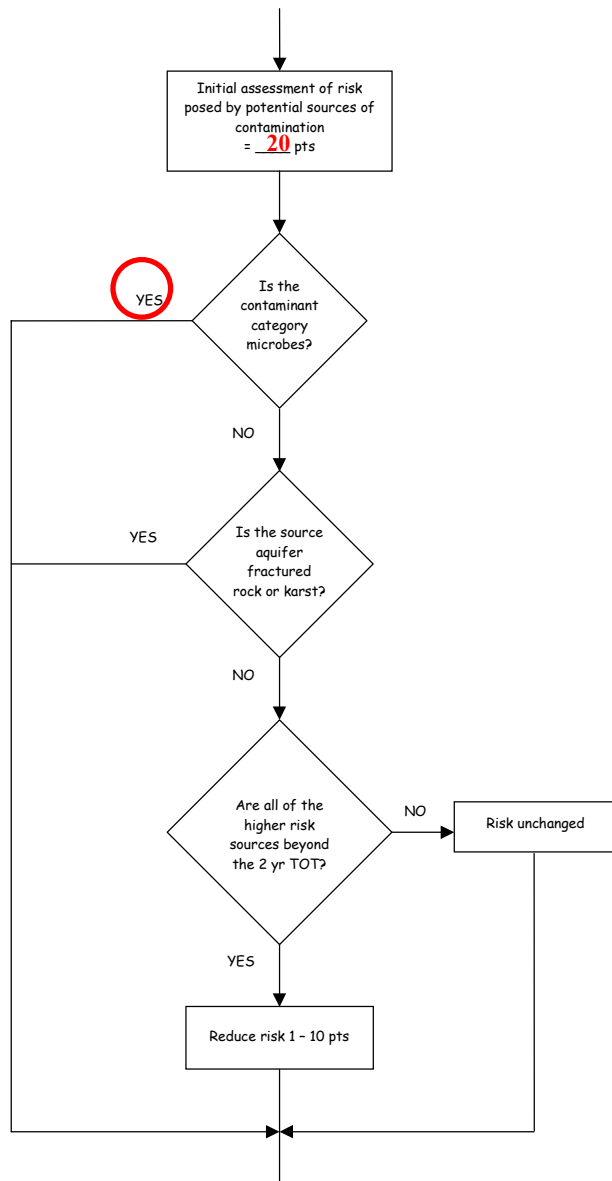


Chart 5. Contaminant risks for Palmer Church of God, Inc.– Nitrates and Nitrites (Continued)



Few septic systems, roads and residential acres  
+2 Points

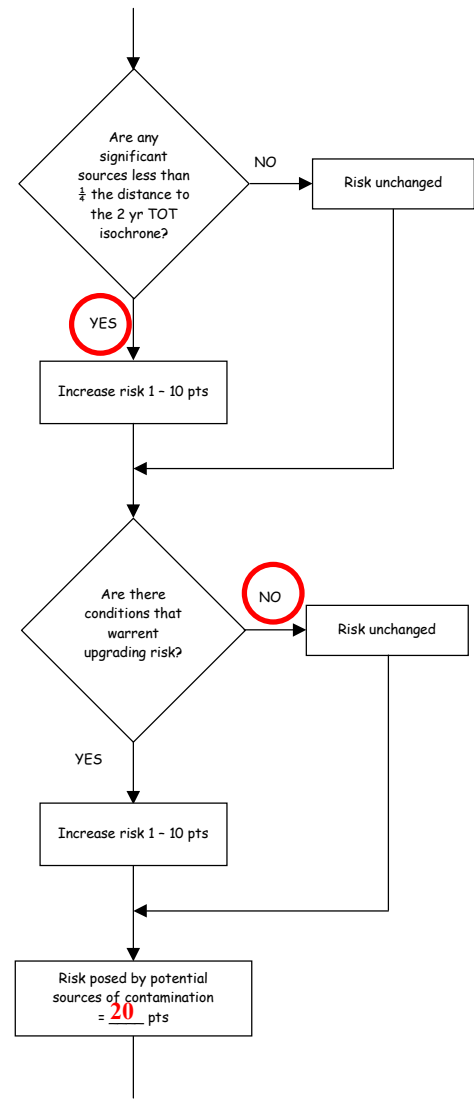
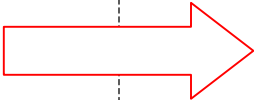
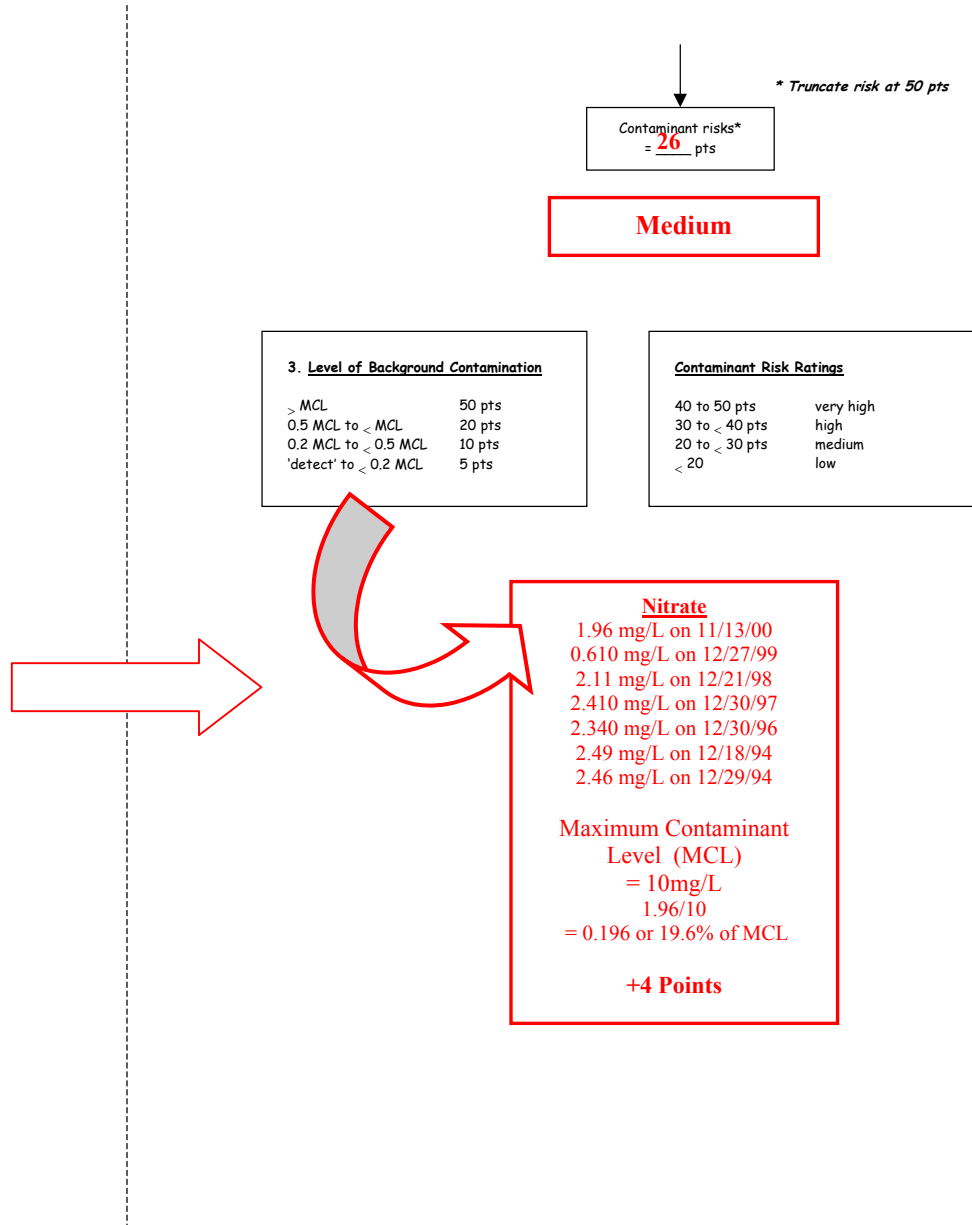
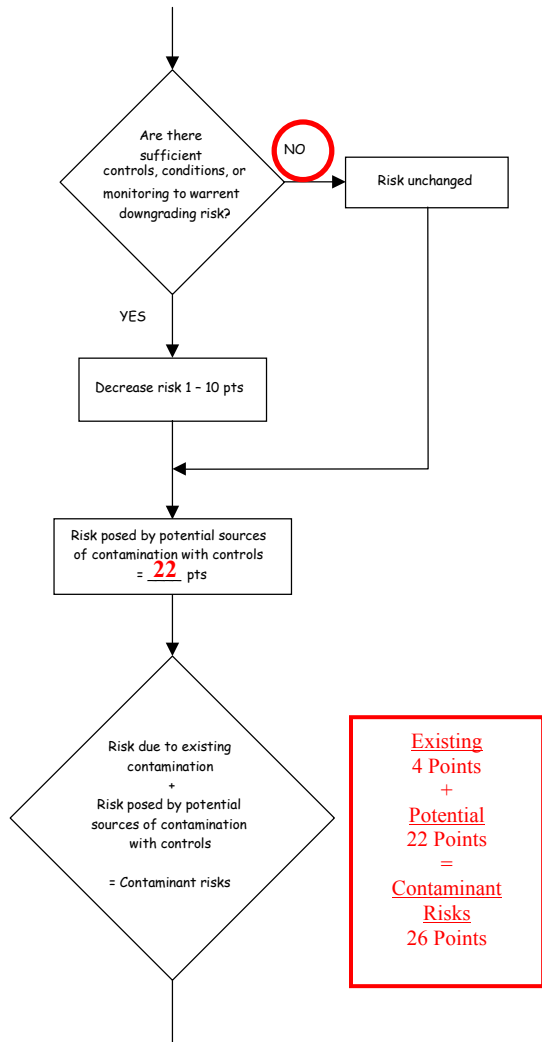


Chart 5. Contaminant risks for Palmer Church of God, Inc.– Nitrates and Nitrites (Continued)



**Table 2. Risk Matrix for Contaminant Sources for Palmer Church of God, Inc.– Nitrates and Nitrites**

**Level of Risk Associated with the Highest Risk Sources**

<b>Next Highest Risk Sources(s)</b>	4 residential septic systems, 2 sewer lines, 10 roads, and 29 acres of residential area	<b>LOW 10 pts</b>	<b>MEDIUM 20 pts</b>	<b>HIGH 30 pts</b>	<b>VERY HIGH 40 pts</b>
	<b>Low</b>	> 10 sources + 10 pts	> 10 sources + 5 pts	> 20 sources + 5 pts	---
	<b>Medium</b>	---	> 2 sources + 5 pts	> 5 sources + 5 pts	> 10 sources + 5 pts
	<b>High</b>	---	---	1 source + 10 pts	> 2 sources + 10 pts
	<b>Very High</b>	---	---	---	1 source + 10 pts

**Chart 6. Vulnerability analysis for Palmer Church of God– Nitrates and Nitrites**

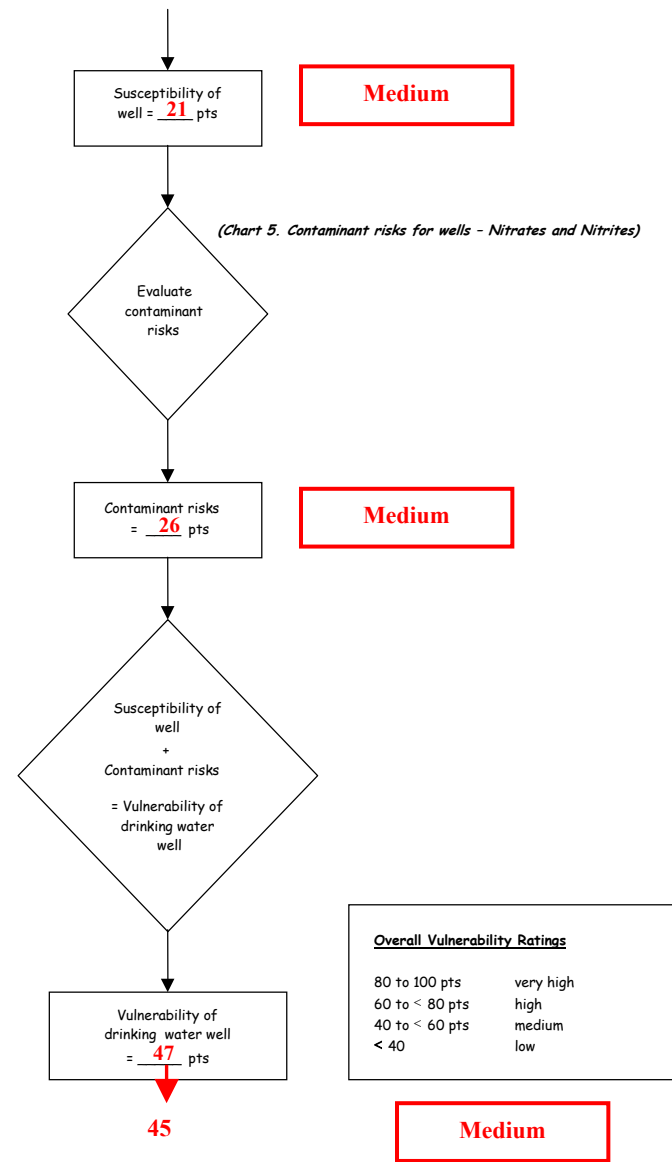
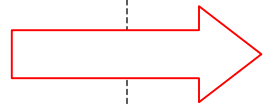
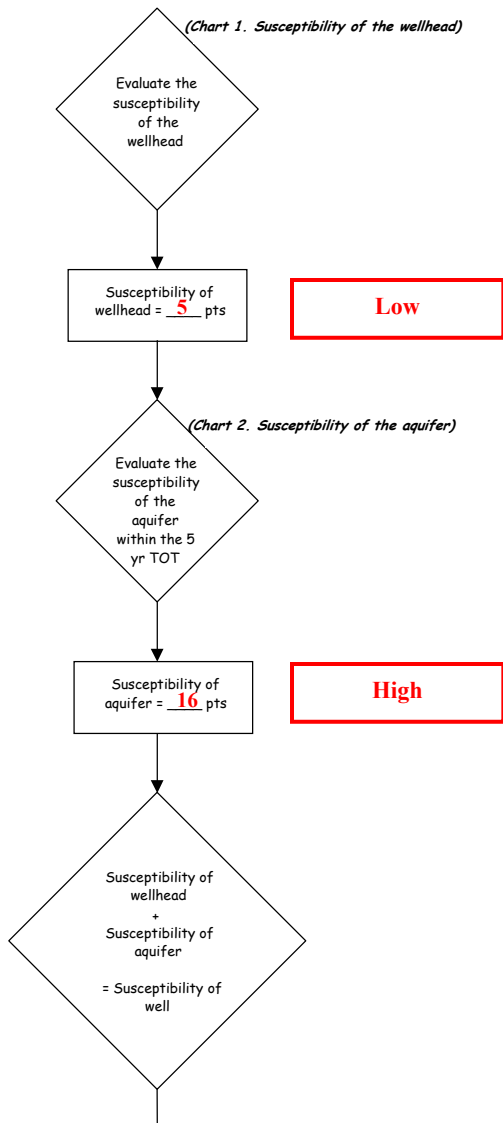


Chart 7. Contaminant risks for Palmer Church of God, Inc. – Volatile Organic Chemicals

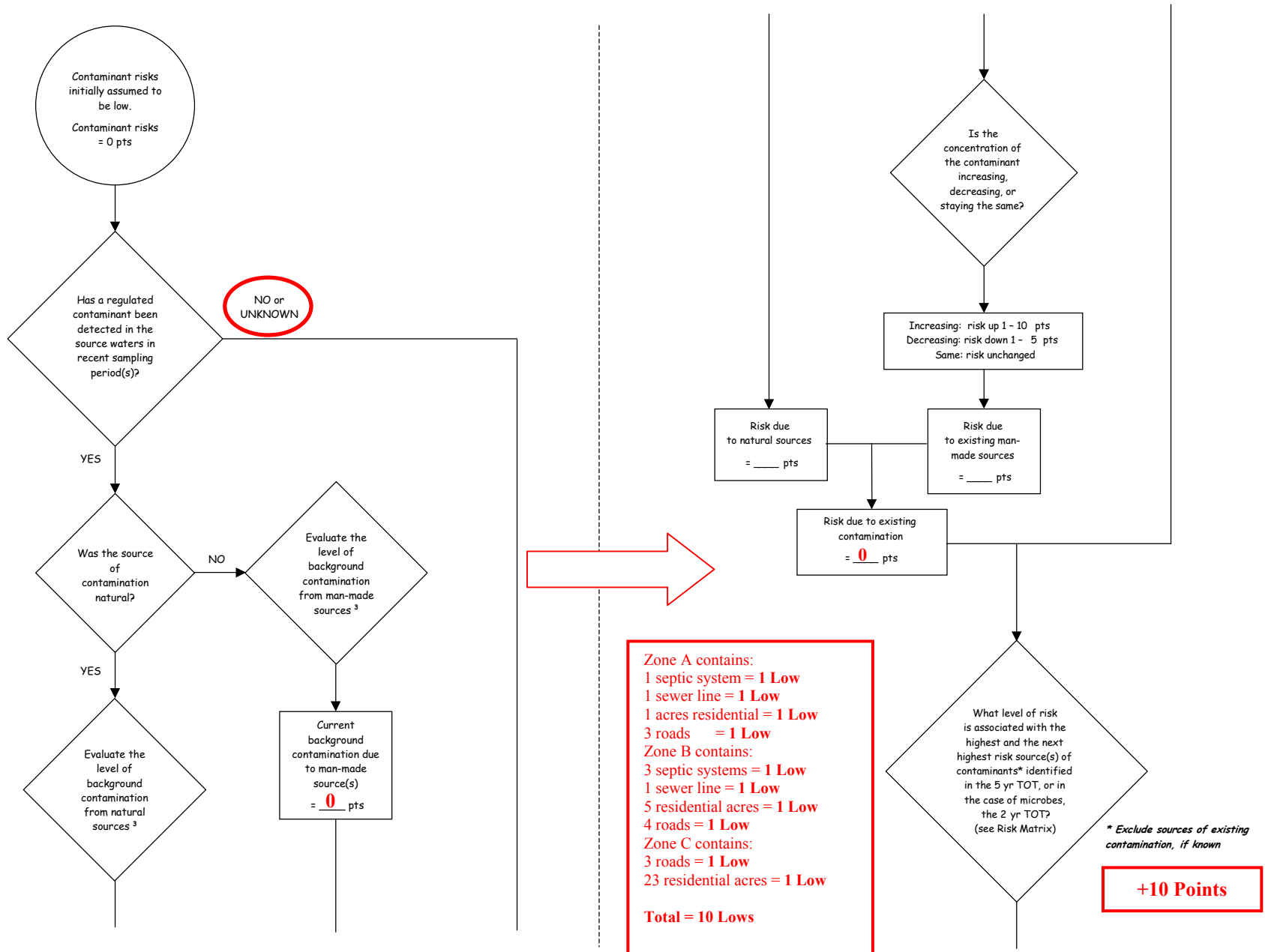




Chart 7. Contaminant risks for Palmer Church of God, Inc. – Volatile Organic Chemicals (Continued)

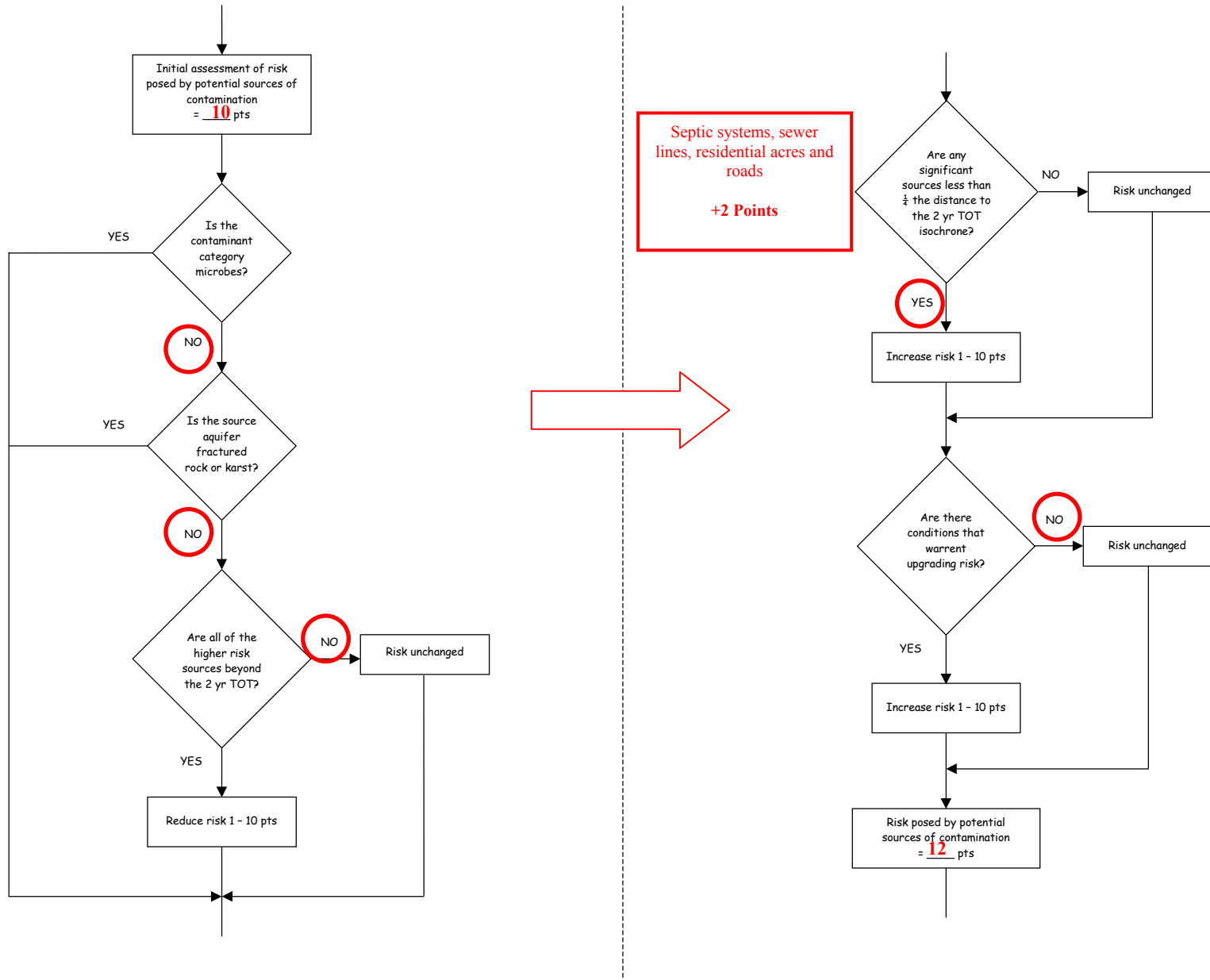
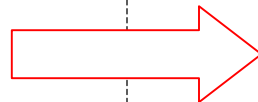
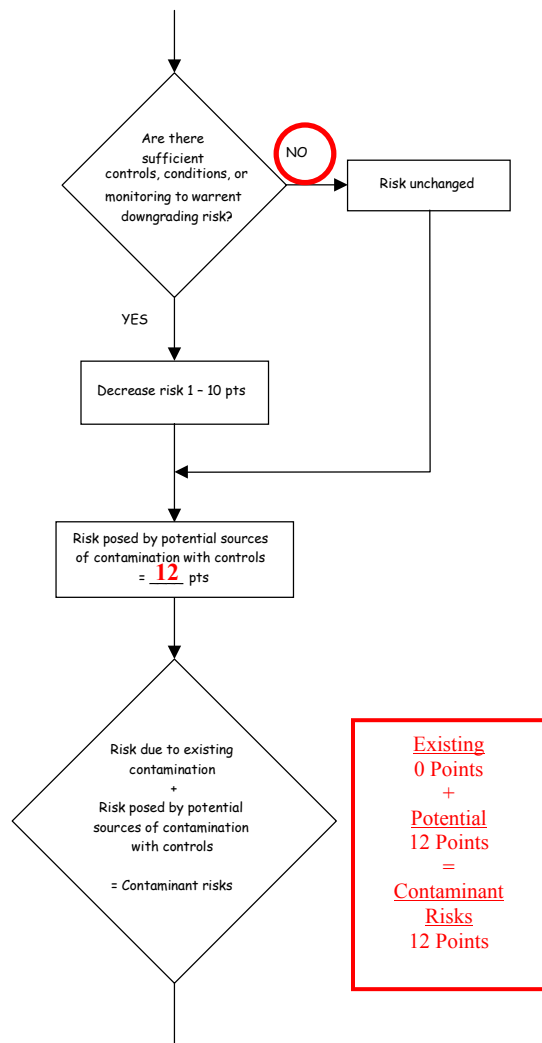


Chart 7. Contaminant risks for Palmer Church of God, Inc. – Volatile Organic Chemicals (Continued)



\* Truncate risk at 50 pts

Contaminant risks\* = 12 pts

**Low**

**3. Level of Background Contamination**

> MCL	50 pts
0.5 MCL to ≤ MCL	20 pts
0.2 MCL to < 0.5 MCL	10 pts
'detect' to < 0.2 MCL	5 pts

**Contaminant Risk Ratings**

40 to 50 pts	very high
30 to < 40 pts	high
20 to < 30 pts	medium
< 20	low

**Table 3. Risk Matrix for Contaminant Sources for Palmer Church of God, Inc. – Volatile Organic Chemicals**

**Level of Risk Associated with the Highest Risk Sources**

<b>Next Highest Risk Sources(s)</b>	4 residential septic systems, 2 sewer lines, 10 roads, and 29 acres of residential area	<b>LOW</b> 10 pts	<b>MEDIUM</b> 20 pts	<b>HIGH</b> 30 pts	<b>VERY HIGH</b> 40 pts
	<b>Low</b>	> 10 sources + 10 pts	> 10 sources + 5 pts	> 20 sources + 5 pts	---
	<b>Medium</b>	---	> 2 sources + 5 pts	> 5 sources + 5 pts	> 10 sources + 5 pts
	<b>High</b>	---	---	1 source + 10 pts	> 2 sources + 10 pts
	<b>Very High</b>	---	---	---	1 source + 10 pts

**Chart 8. Vulnerability analysis for Palmer Church of God– Volatile Organic Chemicals**

