

---

# Source Water Assessment

A Hydrogeologic Susceptibility and  
Vulnerability Assessment for  
Nikiski Senior Center  
Drinking Water System,  
Nikiski, Alaska  
Nikiski Senior Center  
PWSID # 248014.001

June 17, 2003

DRINKING WATER PROTECTION PROGRAM REPORT 559  
Alaska Department of Environmental Conservation

Source Water Assessment for Nikiski Senior  
Center Drinking Water System  
Nikiski, Alaska  
Nikiski Senior Center  
PWSID# 248014.001

DRINKING WATER PROTECTION PROGRAM REPORT 559

The Drinking Water Protection Program (DWPP) is producing Source Water Assessments in compliance with the Safe Drinking Water Act Amendments of 1996. Each assessment includes a delineation of the source water area, an inventory of potential and existing contaminant sources that may impact the water, a risk ranking for each of these contaminants, and an evaluation of the potential vulnerability of these drinking water sources.

These assessments are intended to provide public water systems owners/operators, communities, and local governments with the best available information that may be used to protect the quality of their drinking water. The assessments combine information obtained from various sources, including the U.S. Environmental Protection Agency, Alaska Department of Environmental Conservation (ADEC), public water system owners/operators, and other public information sources. The results of this assessment are subject to change if additional data becomes available. It is anticipated this assessment will be updated every five years to reflect any changes in the vulnerability and/or susceptibility of public drinking water source. If you have any additional information that may affect the results of this assessment, please contact the Program Coordinator of DWPP, (907) 269-7521.

## CONTENTS

EXECUTIVE SUMMARY.....	1	INVENTORY OF POTENTIAL AND EXISTING CONTAMINANT SOURCES .....	2
NIKISKI SENIOR CENTER PUBLIC DRINKING WATER SYSTEM .....	1	RANKING OF CONTAMINANT RISKS .....	3
NIKISKI SENIOR CENTER DRINKING WATER PROTECTION AREA.....	2	VULNERABILITY OF THE NIKISKI SENIOR CENTER DRINKING WATER SYSTEM.....	3

## TABLES

Table 1. Definition of Zones .....	2
Table 2. Susceptibility .....	4
Table 3. Contaminant Risks .....	4
Table 4. Overall Vulnerability.....	4

## APPENDICES

APPENDIX	A. Nikiski Senior Center Drinking Water Protection Area (Map 1)
	B. Contaminant Source Inventory for Nikiski Senior Center (Table 1) Contaminant Source Inventory and Risk Ranking for Nikiski Senior Center – Bacteria and Viruses (Table 2) Contaminant Source Inventory and Risk Ranking for Nikiski Senior Center – Nitrates/Nitrites (Table 3) Contaminant Source Inventory and Risk Ranking for Nikiski Senior Center – Volatile Organic Chemicals (Table 4)
	C. Nikiski Senior Center Drinking Water Protection Area and Potential and Existing Contaminant Sources (Map 1)
	D. Vulnerability Analysis for Contaminant Source Inventory and Risk Ranking for Nikiski Senior Center Public Drinking Water Source (Charts 1 – 8)

# Source Water Assessment for Nikiski Senior Center Source of Public Drinking Water, Nikiski, Alaska

---

## Drinking Water Protection Program Alaska Department of Environmental Conservation

### EXECUTIVE SUMMARY

The public water system for the Nikiski Senior Center is a Class B (transient/non-community) water system consisting of one well. The Nikiski Senior Center is located at 50650 Island Lake Road, Lot 2, Block 5, North Kenai Subdivision, Nikiski, Alaska. The wellhead received a susceptibility rating of **Low** and the aquifer received a susceptibility rating of **High**. Combining these two ratings produces a **Low** rating for the natural susceptibility of the well. Identified potential and current sources of contaminants for the Nikiski Senior Center public drinking water source include: large capacity septic systems, residential septic systems, ADEC recognized contaminated sites, heavy equipment rental/storage, an industrial process water disposal well, motor vehicle waste disposal wells, and highways and roads. These identified potential and existing sources of contamination are considered as sources of bacteria and viruses, nitrates and/or nitrites, and volatile organic chemicals. Overall, the public water source for the Nikiski Senior Center received a vulnerability rating of **High** for the bacteria and viruses, nitrates and nitrites, and volatile organic chemicals contaminant categories.

### NIKISKI SENIOR CENTER PUBLIC DRINKING WATER SYSTEM

The Nikiski Senior Center public water system (PWS) is a Class B (transient/non-community) water system. The system consists of one well located at 50650 Island Lake Road, Nikiski, Alaska (T07N, R12W, Section 12) (See Map 1 of Appendix A). Nikiski is part of the Kenai Peninsula Borough, which is located directly south of the city of Anchorage (Please see the inset of Map 1 in Appendix A for location). The borough encompasses 25,600 square miles, of which only 15,700 square miles is land.

The Kenai Peninsula is broken into two distinct geographic areas; the Kenai Mountains and the Kenai Lowlands. Nikiski and its surrounding communities are located in the Kenai Lowlands. Communities

located within the Kenai Lowlands include Sterling, Soldotna, Kenai, Nikiski, Clam Gulch, Ninilchik, and Homer.

The Kenai Peninsula area topography varies from about 3,000 feet to 5,000 feet above sea level in the Kenai Mountains, the highest point being about 6,400 feet above sea level. The Kenai Peninsula is dotted with many lakes and small streams, including three large lakes (Kenai Lake, Skilak Lake, and Tustumena Lake) and two substantial rivers (Kenai River, and Kasilof River) (USGS 1915).

The Nikiski Senior Center water system is located within the Kenai Lowlands, which is a sub-province of the Cook Inlet-Susitna Lowland physiographic region. The Kenai Lowland is a glaciated coastal shelf situated west of the northeast-trending Kenai Mountains. Approximately 100 miles long, the coastal shelf is bordered on the west by Cook Inlet, on the east by Kenai Mountains, on the north by Turnagain Arm, and on the south by the Caribou Hills and Kachemak Bay. The following summary of regional geology and hydrogeology is based on studies by Bailey and Hogan (1995); Freethey and Scully (1980); Glass (1996); Hartman, et al. (1972); and Karlstrom (1964).

The Kenai Lowland is underlain by bedrock. Tertiary sedimentary bedrock is more than 500 feet below the city of Kenai airport, but is exposed along beach cliffs and road cuts near the southwest end of the lowland. Unconsolidated surficial deposits of Quaternary age include coastal deposits, glaciolacustrine deposits, glaciofluvial deposits, glacial moraine deposits, and periglacial wind deposits. Unconsolidated Quaternary cover on the lowlands generally thickens from south to North being thin or absent in the Homer area, and over 750 feet thick near Nikiski.

The most significant groundwater resources of the Kenai Lowlands are contained in Quaternary coarse-grained sands and gravels. Flood plain, river terrace and other alluvial deposits are common aquifer materials in the area, and are characterized by high rates of recharge, and large saturated thicknesses.

Other favorable materials include proglacial lake and associated river deposits and glacial outwash deposits consisting of meltwater sorted sand and gravel material. Unsorted glacial moraine and drift deposits generally have poor groundwater yields, as do discontinuous layers of confining clays and silt that are common throughout the unconsolidated materials. The relatively thicker sequence of unconsolidated sediments in the northern portions of the Kenai Lowlands locally hosts thicker, more extensive clay aquitards and multiple aquifers.

The Kenai Peninsula area has a central water system, however, many homes and businesses in the area rely on individual wells for their water supply. Most of these wells are deep with depths between 50 and 200 feet. Static water levels in many of these wells are between 10 and 30 feet below the surface. Although groundwater quality can vary significantly in short distance, groundwater supplies are abundant in the area.

According to the well log for the Nikiski Senior Center PWS, the depth of the well is 78 feet below ground surface (bgs), and is screened in an unconfined aquifer based on available well construction details. The well is screened in glacial outwash primarily composed of gravel. The static water level is unknown, but is assumed to be approximately 40 feet bgs, based on an adjacent well. The well is not located in a floodplain.

The Sanitary Survey (10/01/99) for the water system indicated that the land is sloped away from the well providing adequate surface water drainage. The well is grouted according to ADEC regulations. Proper grouting provides added protection against contaminants traveling down the annulus along the well casing and into source waters.

This system operates year round and serves up to 40 non-residents through one service connection.

**NIKISKI SENIOR CENTER DRINKING WATER PROTECTION AREA**

In order to evaluate whether a drinking water source is at risk, we must first evaluate what are the most likely pathways for surface contamination to reach the groundwater. These areas are determined by looking at the characteristics of the soil, groundwater, aquifer, and well.

The most probable area for contamination to reach the drinking water well is the area that contributes water to the well, the groundwater recharge area.

This area is designated as the drinking water protection area (DWPA). Because releases of contaminants within the protection area are most likely to impact the drinking water well, this area will serve as the focus for voluntary protection efforts.

An analytical calculation was used to determine the size and shape of the DWPA for the Nikiski Senior Center. The input parameters describing the attributes of the aquifer in this calculation were adopted from Groundwater (*Freeze and Cherry 1979*). Available geology and groundwater contours were also considered to take into account any uncertainties in groundwater flow and aquifer characteristics to arrive at a meaningful protection area.

The protection areas established for wells by the ADEC are usually separated into four zones, limited by the watershed. These zones correspond to differences in the time-of-travel (TOT) of the water moving through the aquifer to the well (Please refer to the Guidance Manual for Class B Public Water Systems for additional information).

The time of travel for contaminants within the water varies and is dependent on the physical and chemical characteristics of each contaminant. The following is a summary of the four protection area zones for wells and the calculated time-of-travel for each:

**Table 1. Definition of Zones**

Zone	Definition
A	¼ the distance for the 2-yr. time-of-travel
B	Less than the 2 year time-of-travel
C	Less Than the 5 year time-of-travel
D	Less than the 10 year time-of-travel

The DWPA for the Nikiski Senior Center was determined using an analytical calculation and includes Zone A, B, C, and D (See Map 1 of Appendix A).

**INVENTORY OF POTENTIAL AND EXISTING CONTAMINANT SOURCES**

The Drinking Water Protection Program has completed an inventory of potential and existing sources of contamination within the Nikiski Senior Center DWPA. This inventory was completed through a search of agency records and other publicly available information. Potential sources of contamination to the drinking water aquifer include a wide range of categories and types. Potential drinking water contaminants are found within agricultural, residential, commercial, and industrial

areas, but can also occur within areas that have little or no development.

For the basis of all Class B public water system assessments, three categories of drinking water contaminants were inventoried. They include:

- Bacteria and viruses;
- Nitrates and/or nitrites;
- Volatile organic chemicals

The sources are displayed on Map 1 of Appendix C and summarized in Table 1 of Appendix B.

**RANKING OF CONTAMINANT RISKS**

Once the potential and existing sources of contamination have been identified, they are assigned a ranking according to what type and level of risk they represent. Ranking of contaminant risks for a “potential” or “existing” source of contamination is a function of toxicity and volumes of specific contaminants associated with that source. Rankings include:

- Low;
- Medium;
- High; and
- Very High.

The time-of-travel for contaminants within the water varies and is dependent on the physical and chemical characteristics of each contaminant. Bacteria and Viruses are only inventoried in Zones A and B because of their short life span. Only “Very High” and “High” rankings are inventoried within the outer Zone D due to the probability of contaminant dilution by the time the contaminants get to the well.

Tables 2 through 4 in Appendix B contain the ranking of potential and existing sources of contamination with respect to bacteria and viruses, nitrates and/or nitrites, and volatile organic chemicals.

**VULNERABILITY OF THE NIKISKI SENIOR CENTER DRINKING WATER SYSTEM**

Vulnerability of a drinking water source to contamination is a combination of two factors:

- Natural susceptibility; and
- Contaminant risks.

Appendix D contains eight charts, which together form the ‘Vulnerability Analysis’ for a source water assessment for a public drinking water source. Chart

1 analyzes the ‘Susceptibility of the Wellhead’ to contamination by looking at the construction of the well and its surrounding area. Chart 2 analyzes the ‘Susceptibility of the Aquifer’ to contamination by looking at the naturally occurring attributes of the water source and influences on the groundwater system that might lead to contamination. Chart 3 analyzes ‘Contaminant Risks’ for the drinking water source with respect to bacteria and viruses. The ‘Contaminant Risks’ portion of the analysis considers potential sources of contaminants as well as a review of contamination that has or may have occurred, but has not arrived or been detected at the well. Lastly, Chart 4 contains the ‘Vulnerability Analysis for Bacteria and Viruses’. Charts 5 through 8 contain the Contaminant Risks and Vulnerability Analyses for nitrates and nitrites and volatile organic chemicals, respectively.

A score for the Natural Susceptibility is reached by considering the properties of the well and the aquifer.

Susceptibility of the Wellhead (0 – 25 Points)  
(Chart 1 of Appendix D)

+

Susceptibility of the Aquifer (0 – 25 Points)  
(Chart 2 of Appendix D)

=

Natural Susceptibility (Susceptibility of the Well)  
(0 – 50 Points)

A ranking is assigned for the Natural Susceptibility according to the point score:

Natural Susceptibility Ratings	
40 to 50 pts	Very High
30 to < 40 pts	High
20 to < 30 pts	Medium
< 20 pts	Low

The well for Nikiski Senior Center is completed in an unconfined aquifer setting. Because an unconfined aquifer is recharged by surface water and precipitation that migrates downward from the surface, contaminants at the surface have the potential to adversely impact this aquifer. Table 2 shows the Susceptibility scores and ratings for the Nikiski Senior Center.

**Table 2. Susceptibility**

	Score	Rating
Susceptibility of the Wellhead	0	Low
Susceptibility of the Aquifer	16	High
Natural Susceptibility	16	Low

Contaminant risks to a drinking water source depend on the type, number or density, and distribution of contaminant sources. This score has been derived from an examination of existing and historical contamination that has been detected at the drinking water source through routine sampling. It also evaluates potential sources of contamination. Flow charts are used to assign a point score, and ratings are assigned in the same way as for the natural susceptibility:

Contaminant Risk Ratings	
40 to 50 pts	Very High
30 to < 40 pts	High
20 to < 30 pts	Medium
< 20 pts	Low

Table 3 summarizes the Contaminant Risks for each category of drinking water contaminants.

**Table 3. Contaminant Risks**

Category	Score	Rating
Bacteria and Viruses	50	Very High
Nitrates and/or Nitrites	50	Very High
Volatile Organic Chemicals	44	Very High

Finally, an overall vulnerability score is assigned for each water system by combining each of the contaminant risk scores with the natural susceptibility score:

$$\begin{array}{r}
 \text{Natural Susceptibility (0 – 50 points)} \\
 + \\
 \text{Contaminant Risks (0 – 50 points)} \\
 = \\
 \text{Vulnerability of the} \\
 \text{Drinking Water Source to Contamination (0 – 100)}.
 \end{array}$$

Again, rankings are assigned according to a point score:

Overall Vulnerability Ratings	
80 to 100 pts	Very High
60 to < 80 pts	High
40 to < 60 pts	Medium
< 40 pts	Low

Table 4 contains the overall vulnerability scores (0 – 100) and ratings for each of the three categories of drinking water contaminants. Note: scores are rounded off to the nearest five.

**Table 4. Overall Vulnerability**

Category	Score	Rating
Bacteria and Viruses	65	High
Nitrates and Nitrites	65	High
Volatile Organic Chemicals	60	High

**Bacteria and Viruses**

The contaminant risk for bacteria and viruses is Very High. This risk is primarily attributed to the presence of two large-capacity septic systems located in Zone A (See Chart 3 – Contaminant Risks for Bacteria and Viruses in Appendix D).

Only a small amount of bacteria and viruses are required to endanger public health. Bacteria and viruses have been detected during recent water sampling of the system Nikiski Senior Center. Bacteria and viruses were detected and confirmed in 1996. After combining the contaminant risk for bacteria and viruses with the natural susceptibility of the well, the overall vulnerability of the well to contamination is **High**.

**Nitrates and Nitrites**

The contaminant risk for nitrates and nitrites is Very High. The high risk to this source of public drinking water is primarily attributed to the presence of three large-capacity septic systems located in Zones A and D, one industrial process water disposal well in Zone D, and reported nitrate concentrations from recent sampling events (See Chart 5 - Contaminant Risks for Nitrates and/or Nitrites in Appendix D). Nitrates are very mobile, moving at approximately the same rate as water.

Sampling history for the Nikiski Senior Center well indicates a low and consistent trend in nitrate concentrations from 0.7 milligrams per liter (mg/L)

in 1996 to 0.4 mg/L in 1997. The trend and reported nitrate concentrations suggest that the nitrate concentrations are attributed to natural sources. Nitrate concentrations in uncontaminated groundwater are typically less than 2 mg/L, therefore, nitrate concentrations above 2 mg/L may be indicative of man-made sources. The nitrate concentration from the most recent sampling event is 4% (0.4 mg/L) of the Maximum Contaminant Level (MCL) of 10 mg/L. The MCL is the maximum level of contaminant that is allowed to exist in drinking water and still be consumed by humans without harmful health effects. Though existing nitrate contamination was detected at the site, recent data indicates that nitrate concentrations are safe with respect to human health.

Nitrate levels are often derived from the decomposition of organic matter in soils. Although the nitrate source is unknown, and recent sampling data indicates that no bacteria are present, such occurrences may be attributed to septic systems or other sources. After combining the contaminant risk for nitrates and nitrites with the natural susceptibility of the well, the overall vulnerability of the well to nitrate and nitrite contamination remains **High**.

### **Volatile Organic Chemicals**

The contaminant risk for volatile organic chemicals is Very High. The risk is primarily attributed to the presence of three motor vehicle waste disposal wells located in Zone D, three ADEC recognized contaminated sites in Zone C, and an industrial process water disposal well located in Zone D (See Chart 7 – Contaminant Risks for Volatile Organic Chemicals in Appendix D).

The drinking water at Nikiski Senior Center has not been sampled for volatile organic chemicals. After combining the contaminant risk for volatile organic chemicals with the natural susceptibility of the well, the overall vulnerability of the well to contamination is **High**.



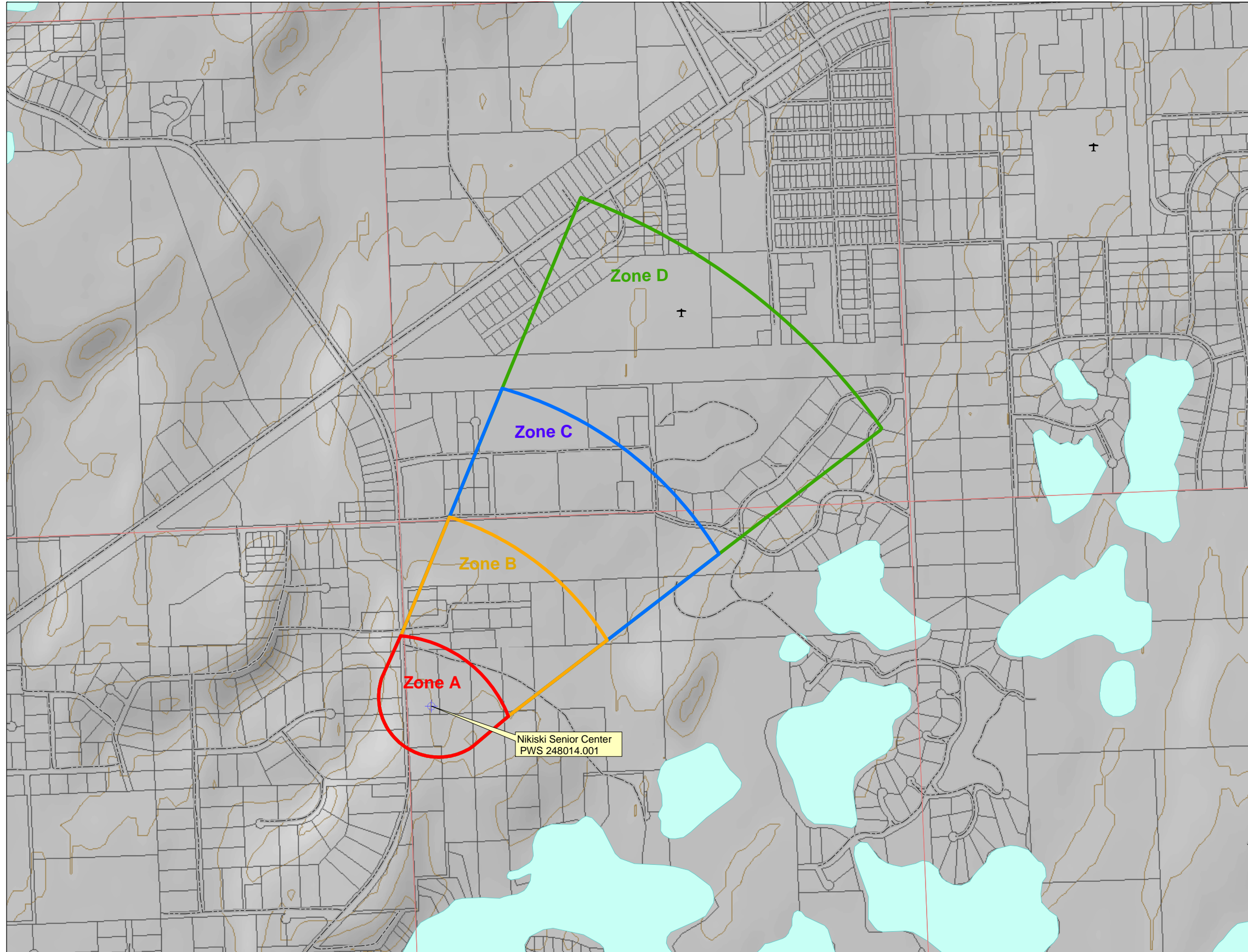
## REFERENCES

- Alaska Department of Community and Economic Development (ADCED), 2002 [WWW document]. URL [http://www.dced.state.ak.us/mra/CF\\_BLOCK.cfm](http://www.dced.state.ak.us/mra/CF_BLOCK.cfm).
- Alaska Department of Environmental Conservation, Contaminated Sites Database, 2003 [WWW database], URL [http://www.state.ak.us/dec/dspar/csites/cs\\_search.htm](http://www.state.ak.us/dec/dspar/csites/cs_search.htm)
- Alaska Department of Environmental Conservation, Leaking Underground Storage Tank Database, 2003 [WWW database], URL [http://www.dec.state.ak.us/spar/stp/ust/search/fac\\_search.asp](http://www.dec.state.ak.us/spar/stp/ust/search/fac_search.asp)
- Bailey, B.J., and Hogan, E.V., 1995 Overview of environmental and hydrogeologic conditions near Kenai, Alaska. U.S. Geological Survey Open-File Report 95-410, 18 p.
- Freethy, G.W., and Scully, D.R. 1980 Water Resources of the Cook Inlet Basin, Alaska. U.S. Geological Survey Hydrologic Investigation Atlas HA-620, prepared in cooperation with Alaska Water Study Committee, State of Alaska Department of Natural Resources, and Division of Geological and Geophysical Surveys.
- Freeze, R. A., and Cherry, J.A. 1979, Groundwater, Prentice-Hall, Englewood Cliffs, New Jersey
- Glass, Roy, L. 1996 Groundwater Conditions and Quality in the Western Part of the Kenai Peninsula, Southcentral Alaska. U.S. Geological Survey Open File Report 94-466, prepared in cooperation with the Alaska Department of Natural Resources, Kenai Peninsula Borough, and Kenai Soil and Water Conservation District.
- Hartman, D.C., Pessel, G.H., and McGee, D.I., 1972 Kenai Group of Cook Inlet Basin, Alaska: State of Alaska. Open File Report #49, Department of Natural Resources Division of Geological and Geophysical Surveys, 5p.
- Karlstrom, T.N.V. 1964 Quaternary geology of the Kenai Lowland and glacial history of the Cook Inlet region, Alaska. U.S. Geological Survey Professional Paper 443, 64 p.
- Kenai River Watershed, 2002 [WWW document]. URL [http://www.kenai-watershed.org/spawning/kenai\\_river/kenai\\_river.html](http://www.kenai-watershed.org/spawning/kenai_river/kenai_river.html).
- Martin, G.C., Johnson, B.L., and Grant, 1915, Geology and mineral resources of Kenai Peninsula, Alaska: US Geological Survey Bulletin 587, 243 p., maps.
- United States Environmental Protection Agency (EPA), 2002 [WWW document]. URL <http://www.epa.gov/safewater/mcl.html>.

## **APPENDIX A**

### **Nikiski Senior Center Drinking Water Protection Area Location Map (Map 1)**

# Drinking Water Protection Areas for the Public Water Well System for PWS #248014.001 Nikiski Senior Center



## LEGEND

Public Water System Well

### Groundwater Protection Zones

- Zone A - Several Months Travel Time
- Zone B - Less Than 2 Years Travel Time
- Zone C - Less Than 5 Years Travel Time
- Zone D - Less Than 10 Years Travel Time

### Hydrography/Physical

- Parcels
- Stream
- Lake or Pond
- Contours (50 ft.)

### Transportation

- Roads

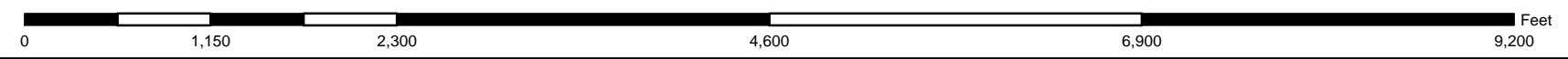
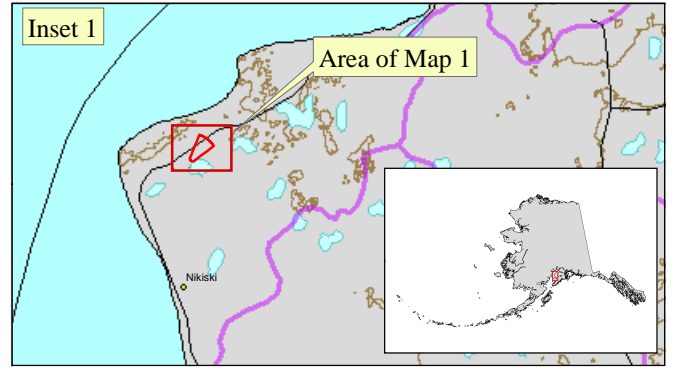
Data Sources:  
 Contaminant Sources, Public Water System Wells, Contours  
 Alaska Department of Environmental Conservation (ADEC)

Parcels  
 Kenai Peninsula Borough

All other data  
 United States Geological Survey (USGS)

Drinking Water Protection Areas based on ADEC  
 Calculation Spreadsheet.

URS Corporation does not guarantee the accuracy or validity of the data provided.



## **APPENDIX B**

### **Contaminant Source Inventory and Risk Ranking for Nikiski Senior Center (Tables 1-4)**

**Table 1**

**Contaminant Source Inventory for  
Nikiski Senior Center**

**PWSID 248014.001**

<b>Contaminant Source Type</b>	<b>Contaminant Source ID</b>	<b>CS ID tag</b>	<b>Zone</b>	<b>Map Number</b>	<b>Comments</b>
Injection wells (Class V) Large-Capacity Septic System (Drainfield Disposal Method)	D10	D10-01	A	1	
Injection wells (Class V) Large-Capacity Septic System (Drainfield Disposal Method)	D10	D10-02	A	1	
Residential Areas	R01	R01-01	A	1	1.56 acres of residential area in Zone A
Highways and roads, paved (cement or asphalt)	X20	X20-01	A	1	2 Highways/paved roads in Zone A
Residential Areas	R01	R01-02	B	1	17.97 acres of residential area in Zone B
Septic systems (serves one single-family home)	R02	R02-01	B	1	9 single-family septic systems in Zone B
Highways and roads, paved (cement or asphalt)	X20	X20-02	B	1	2 Highways/paved roads in Zone B
Residential Areas	R01	R01-03	C	1	12.55 acres of residential area in Zone C
Septic systems (serves one single-family home)	R02	R02-02	C	1	2 single-family septic systems in Zone C
Contaminated sites, DEC recognized, non-Superfund, non-RCRA	U04	U04-01	C	1	Arness Dock - Closed - No File # - ADEC RECKEY: 1989230128902 <a href="http://www.dec.state.ak.us/spar/cs/cs_search.htm">http://www.dec.state.ak.us/spar/cs/cs_search.htm</a>
Contaminated sites, DEC recognized, non-Superfund, non-RCRA	U04	U04-02	C	1	Arness Septage - Inactive - No File # - ADEC RECKEY:1985230926201 <a href="http://www.dec.state.ak.us/spar/cs/cs_search.htm">http://www.dec.state.ak.us/spar/cs/cs_search.htm</a>
Contaminated sites, DEC recognized, non-Superfund, non-RCRA	U04	U04-03	C	1	Silvertip Storage Yard - Closed - No File # - ADEC RECKEY: 1988231018301 <a href="http://www.dec.state.ak.us/spar/cs/cs_search.htm">http://www.dec.state.ak.us/spar/cs/cs_search.htm</a>
Highways and roads, paved (cement or asphalt)	X20	X20-03	C	1	4 Highways/paved roads in Zone C
Heavy equipment rental/storage	C18	C18-01	D	1	Peak Oilfield Services
Injection wells (Class V) Large-Capacity Septic System (Drainfield Disposal Method)	D10	D10-03	D	1	
Injection wells (Class V) Industrial Process Water & Water Disposal Wells	D40	D40-01	D	1	no information given
Injection wells (Class V) Motor Vehicle Waste Disposal Well	D42	D42-01	D	1	
Injection wells (Class V) Motor Vehicle Waste Disposal Well	D42	D42-02	D	1	
Injection wells (Class V) Motor Vehicle Waste Disposal Well	D42	D42-03	D	1	
Residential Areas	R01	R01-04	D	1	3.35 acres of residential area in Zone D

<i>Contaminant Source Type</i>	<i>Contaminant Source ID</i>	<i>CS ID tag</i>	<i>Zone</i>	<i>Map Number</i>	<i>Comments</i>
Septic systems (serves one single-family home)	R02	R02-03	D	1	11 single-family septic systems in Zone D
Highways and roads, paved (cement or asphalt)	X20	X20-04	D	1	11 Highways/paved roads in Zone D

**Table 2**

*Contaminant Source Inventory and Risk Ranking for  
Nikiski Senior Center  
Sources of Bacteria and Viruses*

*PWSID 248014.001*

<i>Contaminant Source Type</i>	<i>Contaminant Source ID</i>	<i>CS ID tag</i>	<i>Zone</i>	<i>Risk Ranking for Analysis</i>	<i>Map Number</i>	<i>Comments</i>
Injection wells (Class V) Large-Capacity Septic System (Drainfield Disposal Method)	D10	D10-01	A	High	1	
Injection wells (Class V) Large-Capacity Septic System (Drainfield Disposal Method)	D10	D10-02	A	High	1	
Residential Areas	R01	R01-01	A	Low	1	1.56 acres of residential area in Zone A
Highways and roads, paved (cement or asphalt)	X20	X20-01	A	Low	1	2 Highways/paved roads in Zone A
Residential Areas	R01	R01-02	B	Low	1	17.97 acres of residential area in Zone B
Septic systems (serves one single-family home)	R02	R02-01	B	Low	1	9 single-family septic systems in Zone B
Highways and roads, paved (cement or asphalt)	X20	X20-02	B	Low	1	2 Highways/paved roads in Zone B
Injection wells (Class V) Large-Capacity Septic System (Drainfield Disposal Method)	D10	D10-03	D	High	1	
Injection wells (Class V) Industrial Process Water & Water Disposal Wells	D40	D40-01	D	High	1	no information given

Table 3

*Contaminant Source Inventory and Risk Ranking for  
Nikiski Senior Center  
Sources of Nitrates/Nitrites*

PWSID 248014.001

<i>Contaminant Source Type</i>	<i>Contaminant Source ID</i>	<i>CS ID tag</i>	<i>Zone</i>	<i>Risk Ranking for Analysis</i>	<i>Map Number</i>	<i>Comments</i>
Injection wells (Class V) Large-Capacity Septic System (Drainfield Disposal Method)	D10	D10-01	A	High	1	
Injection wells (Class V) Large-Capacity Septic System (Drainfield Disposal Method)	D10	D10-02	A	High	1	
Residential Areas	R01	R01-01	A	Low	1	1.56 acres of residential area in Zone A
Highways and roads, paved (cement or asphalt)	X20	X20-01	A	Low	1	2 Highways/paved roads in Zone A
Residential Areas	R01	R01-02	B	Low	1	17.97 acres of residential area in Zone B
Septic systems (serves one single-family home)	R02	R02-01	B	Low	1	9 single-family septic systems in Zone B
Highways and roads, paved (cement or asphalt)	X20	X20-02	B	Low	1	2 Highways/paved roads in Zone B
Residential Areas	R01	R01-03	C	Low	1	12.55 acres of residential area in Zone C
Septic systems (serves one single-family home)	R02	R02-02	C	Low	1	2 single-family septic systems in Zone C
Highways and roads, paved (cement or asphalt)	X20	X20-03	C	Low	1	4 Highways/paved roads in Zone C
Injection wells (Class V) Large-Capacity Septic System (Drainfield Disposal Method)	D10	D10-03	D	High	1	
Injection wells (Class V) Industrial Process Water & Water Disposal Wells	D40	D40-01	D	High	1	no information given



Table 4

*Contaminant Source Inventory and Risk Ranking for  
Nikiski Senior Center  
Sources of Volatile Organic Chemicals*

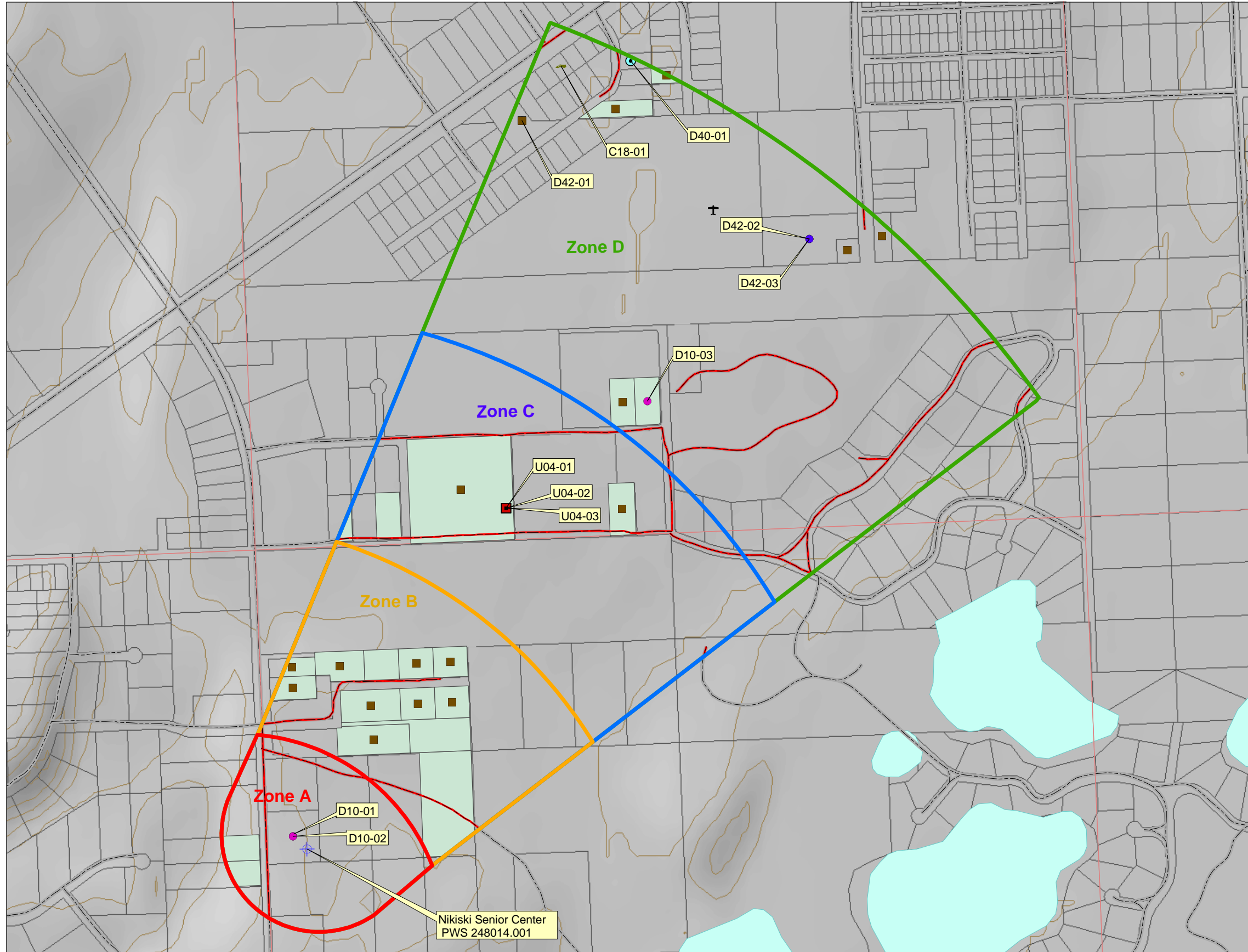
PWSID 248014.001

<i>Contaminant Source Type</i>	<i>Contaminant Source ID</i>	<i>CS ID tag</i>	<i>Zone</i>	<i>Risk Ranking for Analysis</i>	<i>Map Number</i>	<i>Comments</i>
Injection wells (Class V) Large-Capacity Septic System (Drainfield Disposal Method)	D10	D10-01	A	Low	1	
Injection wells (Class V) Large-Capacity Septic System (Drainfield Disposal Method)	D10	D10-02	A	Low	1	
Residential Areas	R01	R01-01	A	Low	1	1.56 acres of residential area in Zone A
Highways and roads, paved (cement or asphalt)	X20	X20-01	A	Low	1	2 Highways/paved roads in Zone A
Residential Areas	R01	R01-02	B	Low	1	17.97 acres of residential area in Zone B
Septic systems (serves one single-family home)	R02	R02-01	B	Low	1	9 single-family septic systems in Zone B
Highways and roads, paved (cement or asphalt)	X20	X20-02	B	Low	1	2 Highways/paved roads in Zone B
Residential Areas	R01	R01-03	C	Low	1	12.55 acres of residential area in Zone C
Septic systems (serves one single-family home)	R02	R02-02	C	Low	1	2 single-family septic systems in Zone C
Contaminated sites, DEC recognized, non-Superfund, non-RCRA	U04	U04-01	C	High	1	Arness Dock - Closed - No File # - ADEC RECKEY: 1989230128902 <a href="http://www.dec.state.ak.us/spar/cs/cs_search.htm">http://www.dec.state.ak.us/spar/cs/cs_search.htm</a>
Contaminated sites, DEC recognized, non-Superfund, non-RCRA	U04	U04-02	C	High	1	Arness Septage - Inactive - No File # - ADEC RECKEY:1985230926201 <a href="http://www.dec.state.ak.us/spar/cs/cs_search.htm">http://www.dec.state.ak.us/spar/cs/cs_search.htm</a>
Contaminated sites, DEC recognized, non-Superfund, non-RCRA	U04	U04-03	C	High	1	Silvertip Storage Yard - Closed - No File # - ADEC RECKEY: 1988231018301 <a href="http://www.dec.state.ak.us/spar/cs/cs_search.htm">http://www.dec.state.ak.us/spar/cs/cs_search.htm</a>
Highways and roads, paved (cement or asphalt)	X20	X20-03	C	Low	1	4 Highways/paved roads in Zone C
Injection wells (Class V) Industrial Process Water & Water Disposal Wells	D40	D40-01	D	High	1	no information given
Injection wells (Class V) Motor Vehicle Waste Disposal Well	D42	D42-01	D	High	1	
Injection wells (Class V) Motor Vehicle Waste Disposal Well	D42	D42-02	D	High	1	
Injection wells (Class V) Motor Vehicle Waste Disposal Well	D42	D42-03	D	High	1	

## **APPENDIX C**

### **Nikiski Senior Center Drinking Water Protection Area and Potential and Existing Contaminant Sources (Map 1)**

**Drinking Water Protection Areas for the Public Water Well System for PWS #248014.001 Nikiski Senior Center**  
**Showing Potential and Existing Sources of Contamination**



**LEGEND**

- Public Water System Well
- Groundwater Protection Zones**
  - Zone A – Several Months Travel Time
  - Zone B – Less Than 2 Years Travel Time
  - Zone C – Less Than 5 Years Travel Time
  - Zone D – Less Than 10 Years Travel Time
- Contaminant Sources**
  - Injection Wells (Class V) Large Capacity Septic System (D10)
  - Injection Wells (Class V) Industrial Process Water & Water Disposal Wells (D40)
  - Injection wells (Class V) Motor Vehicle Waste Disposal Well (D42)
  - Septic Systems (serves one or more single family homes) (R2)
  - Heavy equipment rental/storage (C18)
  - Contaminated Sites, DEC Recognized, non-Superfund, non-RCRA (U04)
  - Highways and roads, paved (X20)
  - Residential Areas (R1)

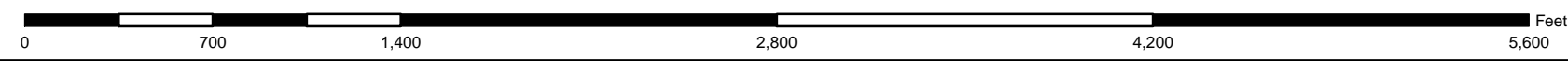
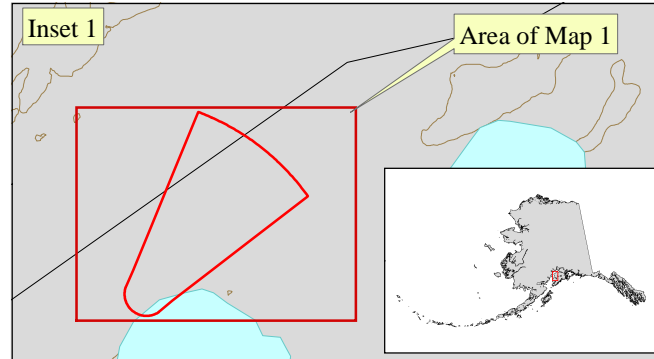
Data Sources:  
 Contaminant Sources, Public Water System Wells, Contours  
 Alaska Department of Environmental Conservation (ADEC)

Parcels  
 Kenai Peninsula Borough

All other data  
 United States Geological Survey (USGS)

Drinking Water Protection Areas based on ADEC  
 Calculation Spreadsheet.

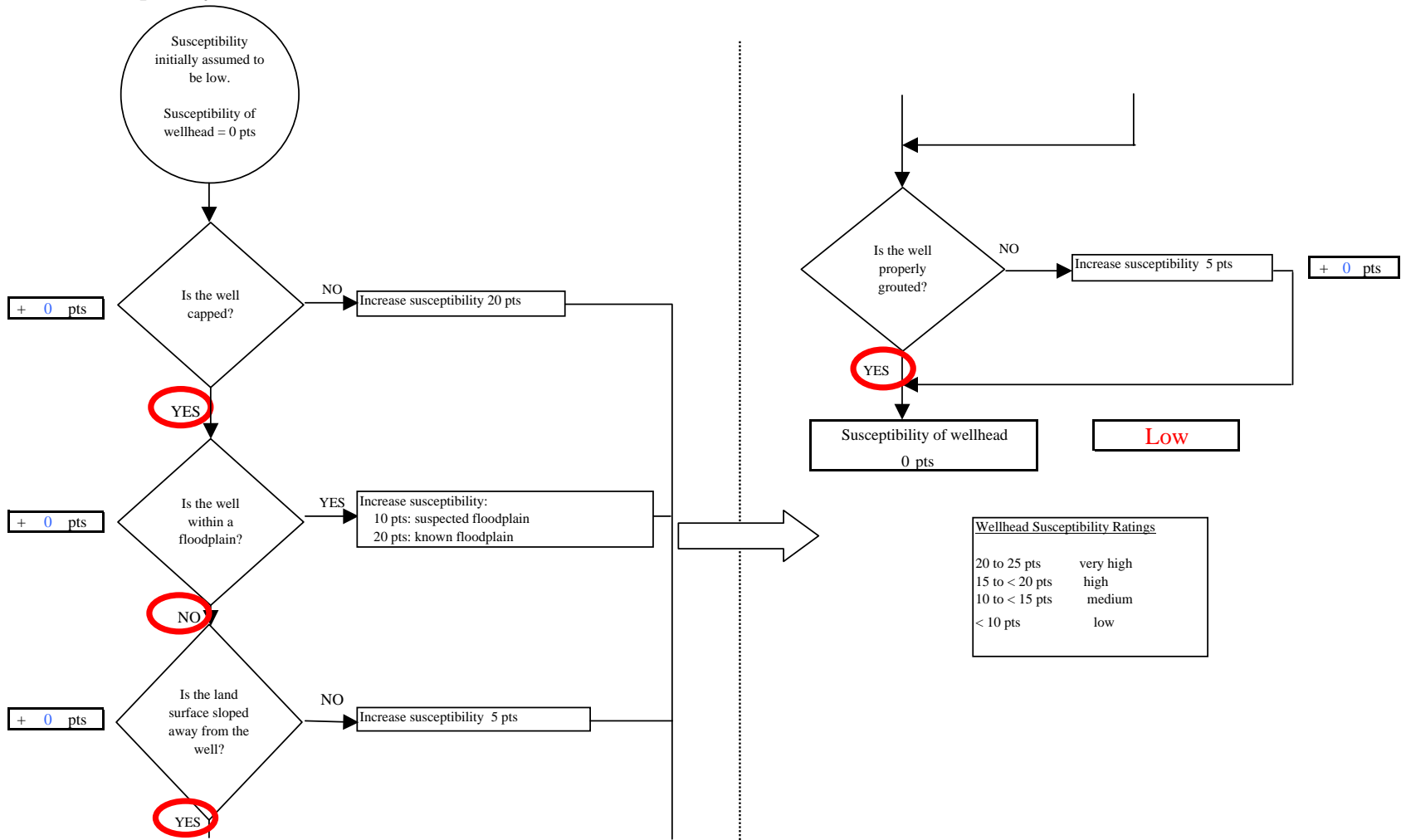
URS Corporation does not guarantee the accuracy or validity of the data provided.



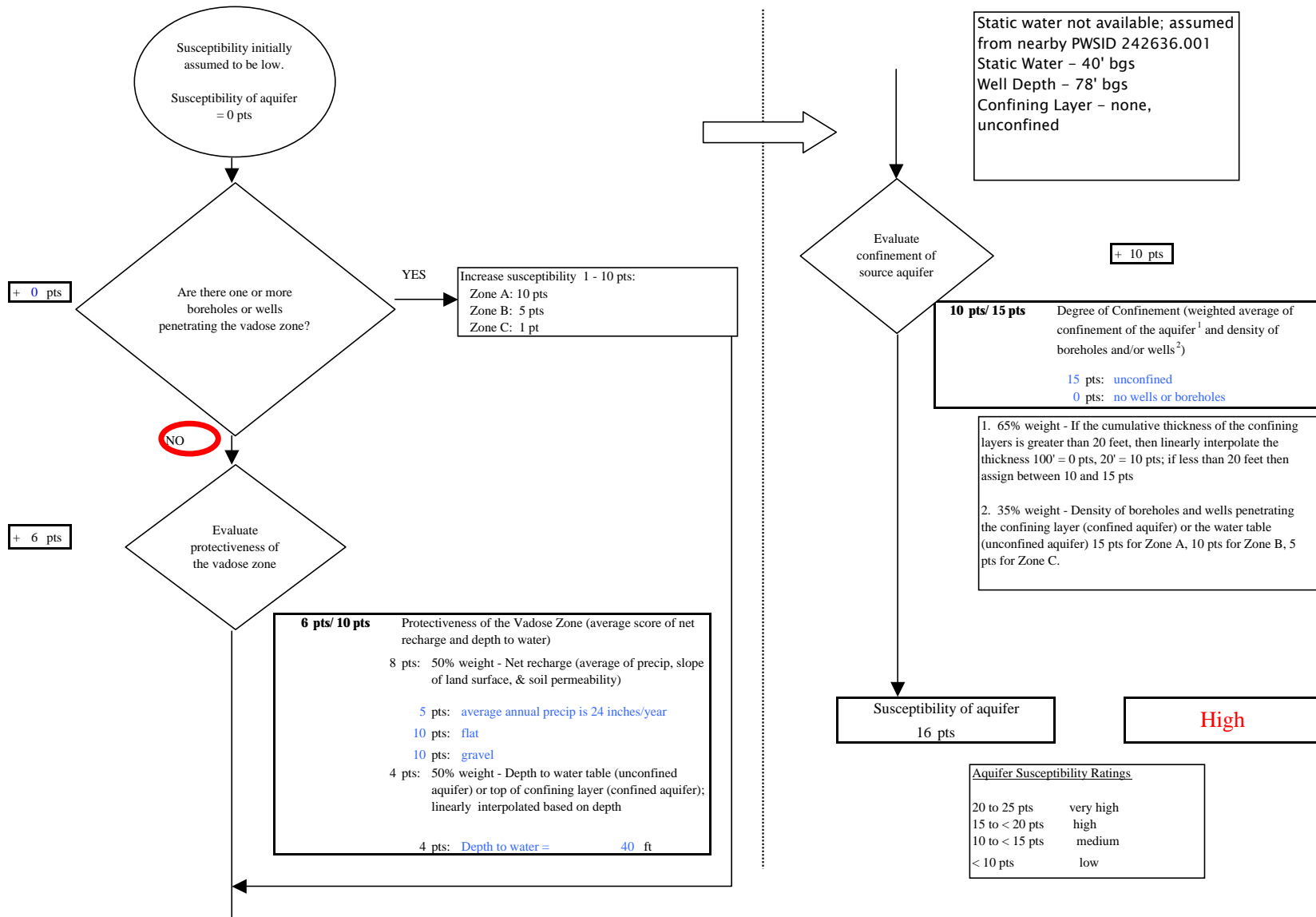
## **APPENDIX D**

### **Vulnerability Analysis for Nikiski Senior Center Public Drinking Water Source (Charts 1-8)**

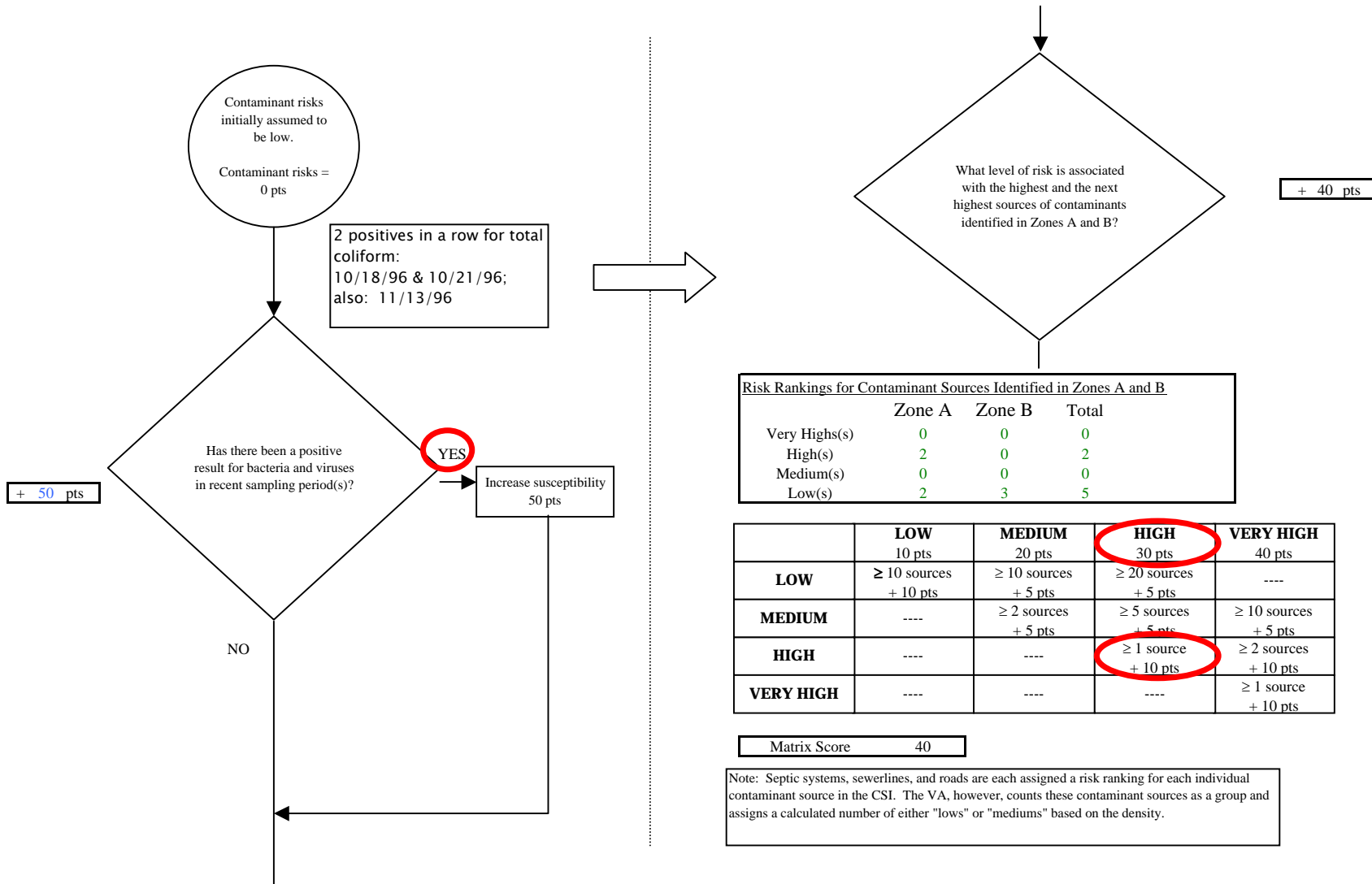
**Chart 1. Susceptibility of the wellhead - Nikiski Senior Center (248014.001)**



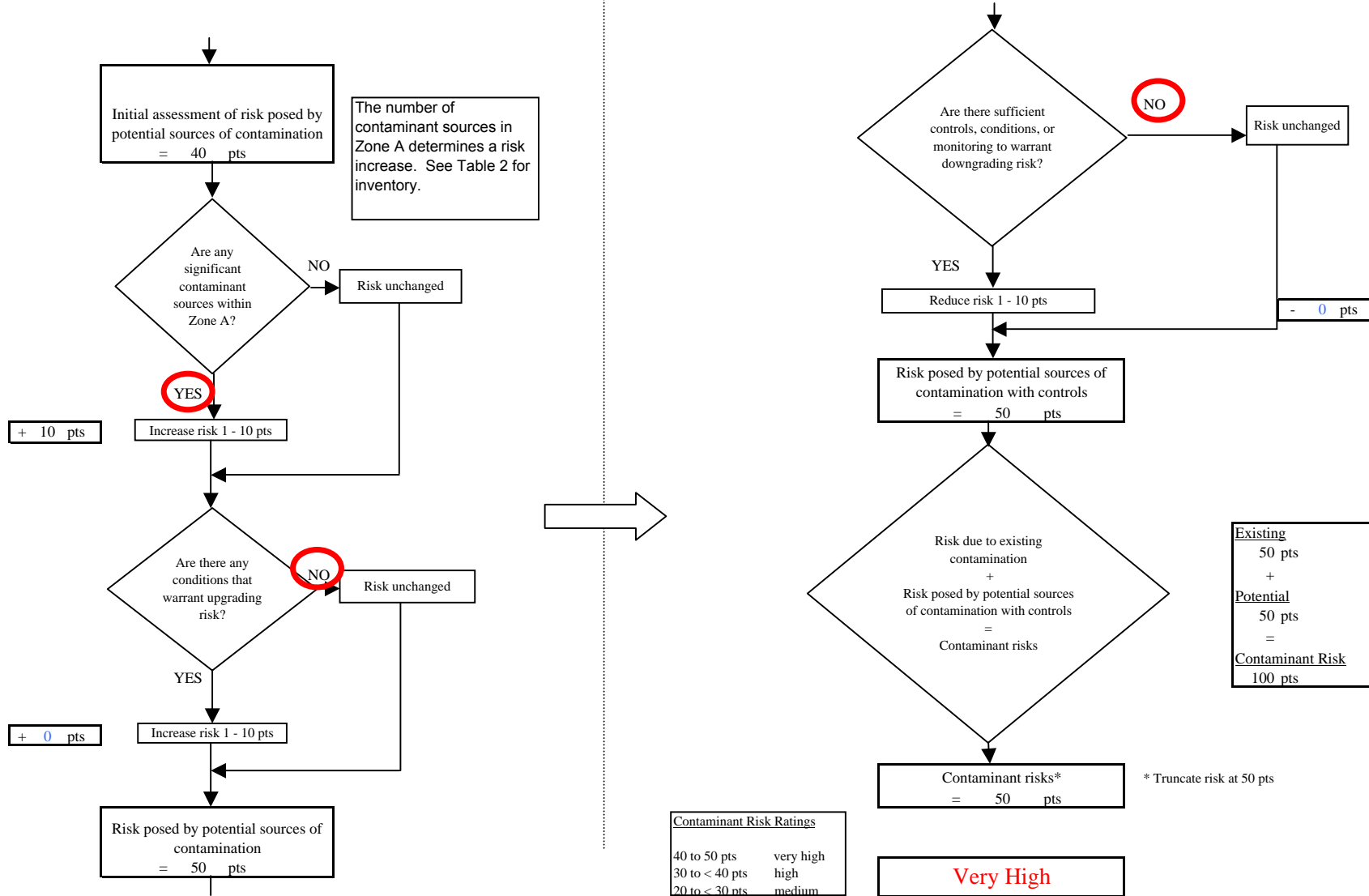
**Chart 2. Susceptibility of the aquifer - Nikiski Senior Center (248014.001)**



**Chart 3. Contaminant risks for Nikiski Senior Center (248014.001) - Bacteria & Viruses**

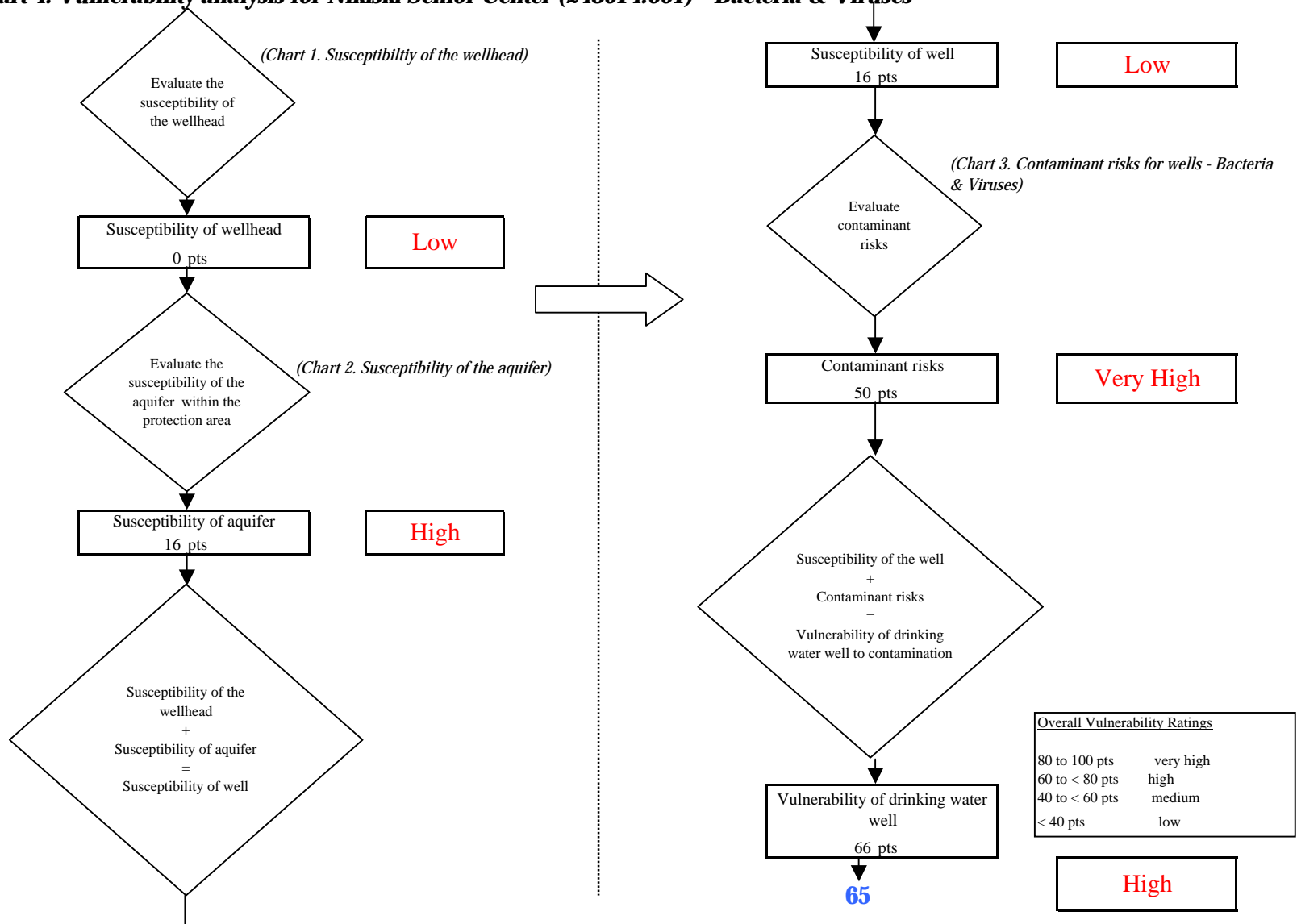


**Chart 3. Contaminant risks for Nikiski Senior Center (248014.001) - Bacteria & Viruses**

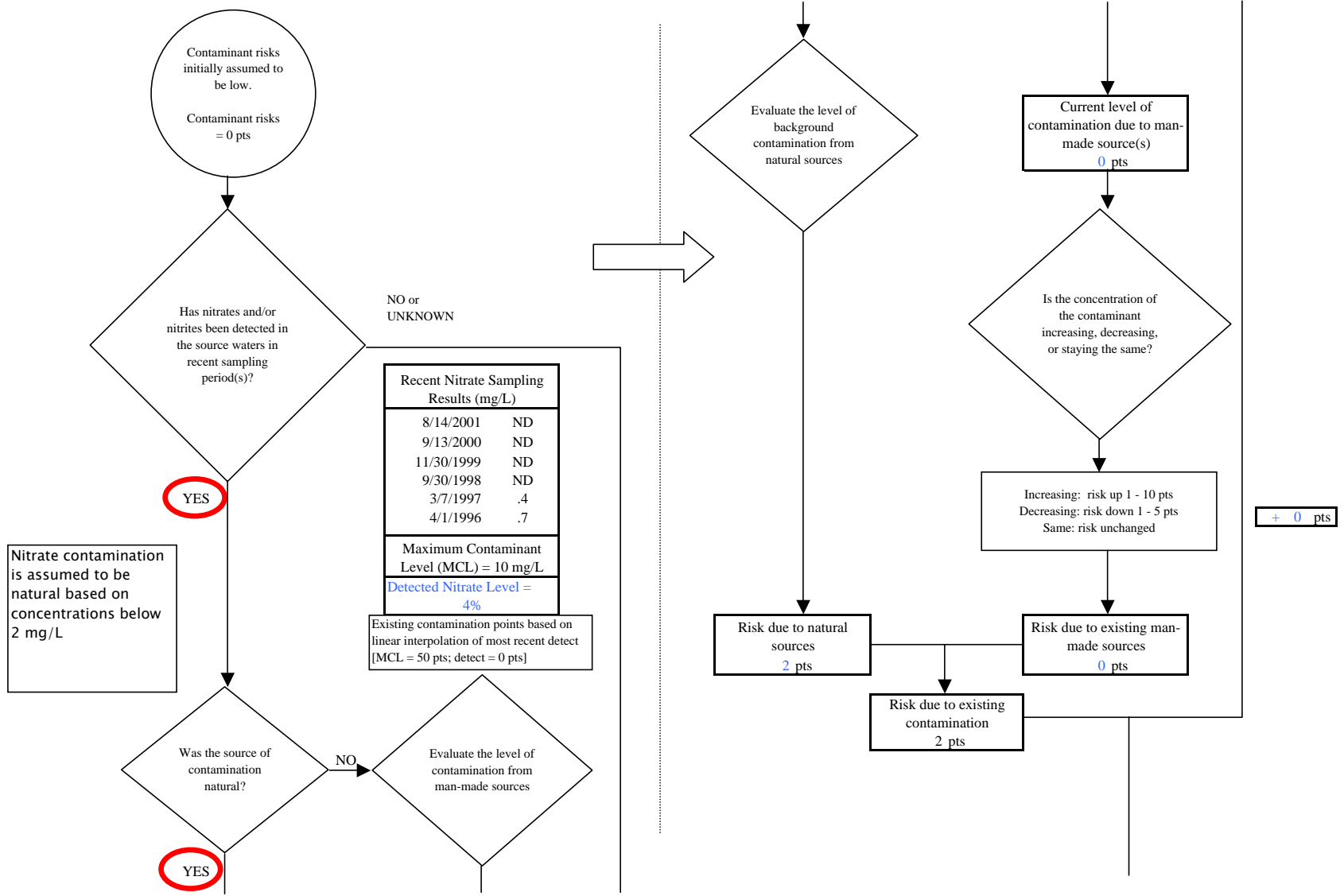




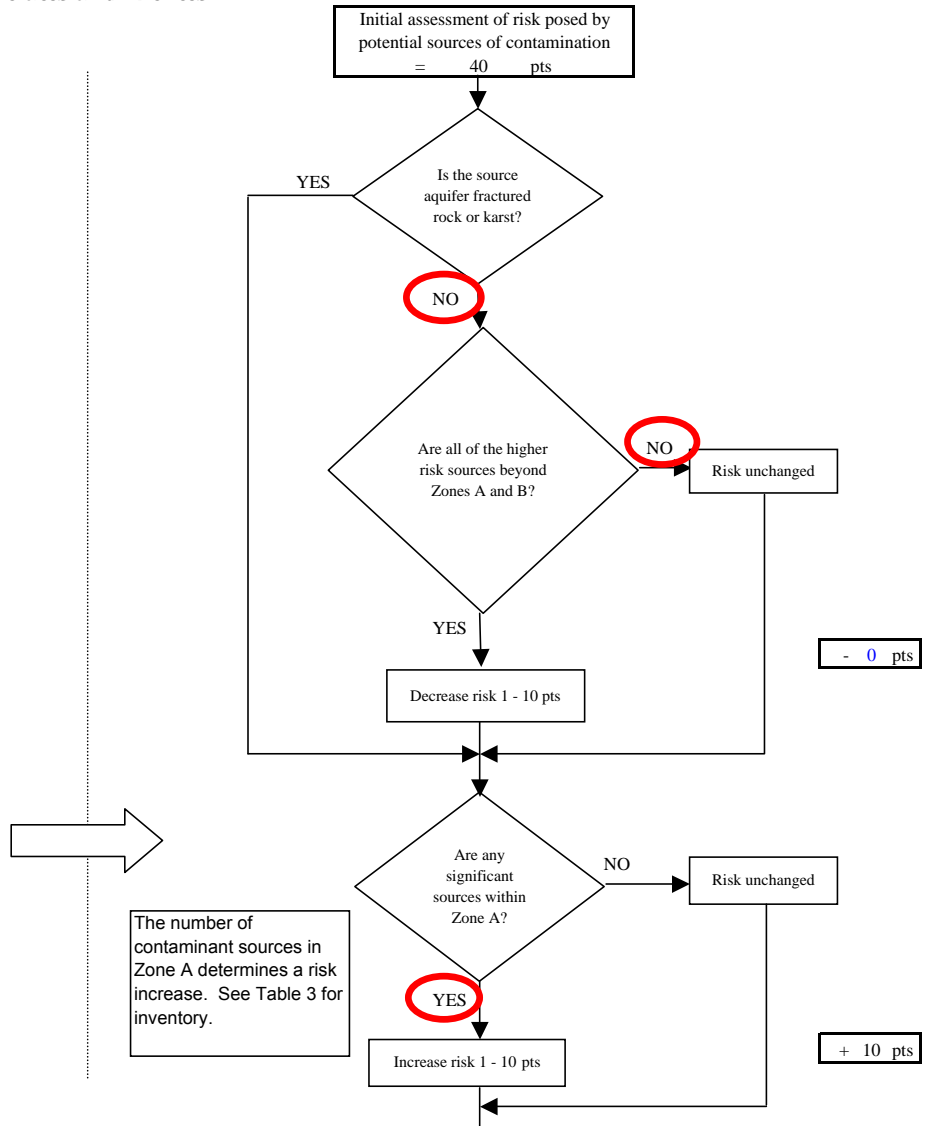
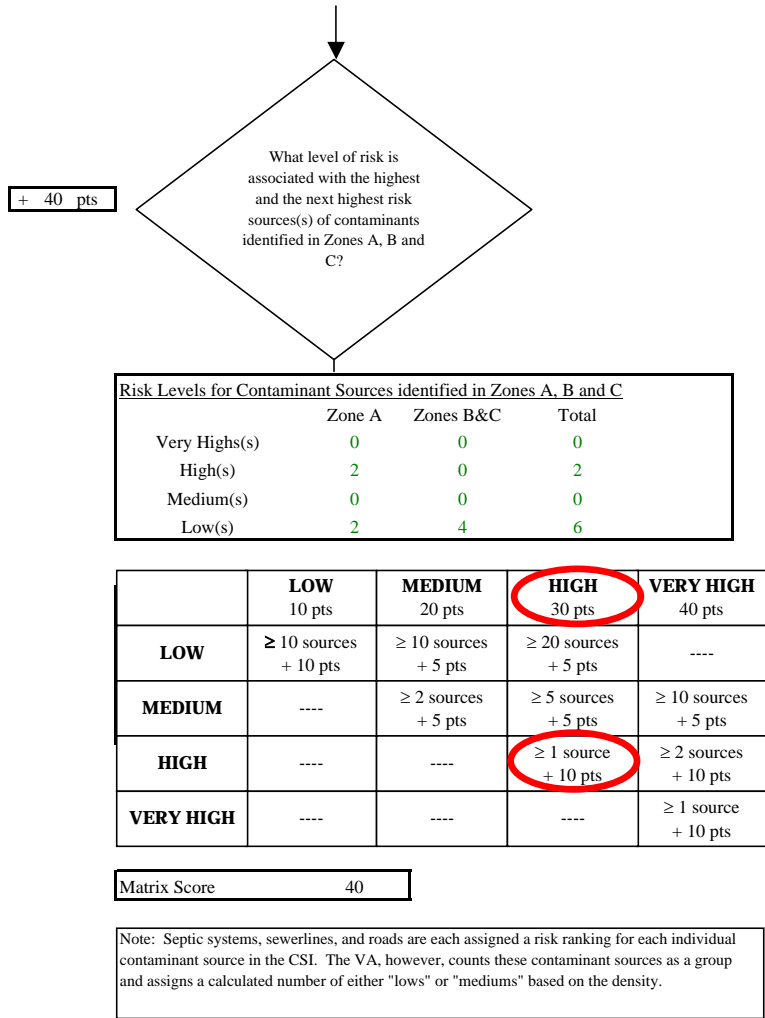
**Chart 4. Vulnerability analysis for Nikiski Senior Center (248014.001) - Bacteria & Viruses**



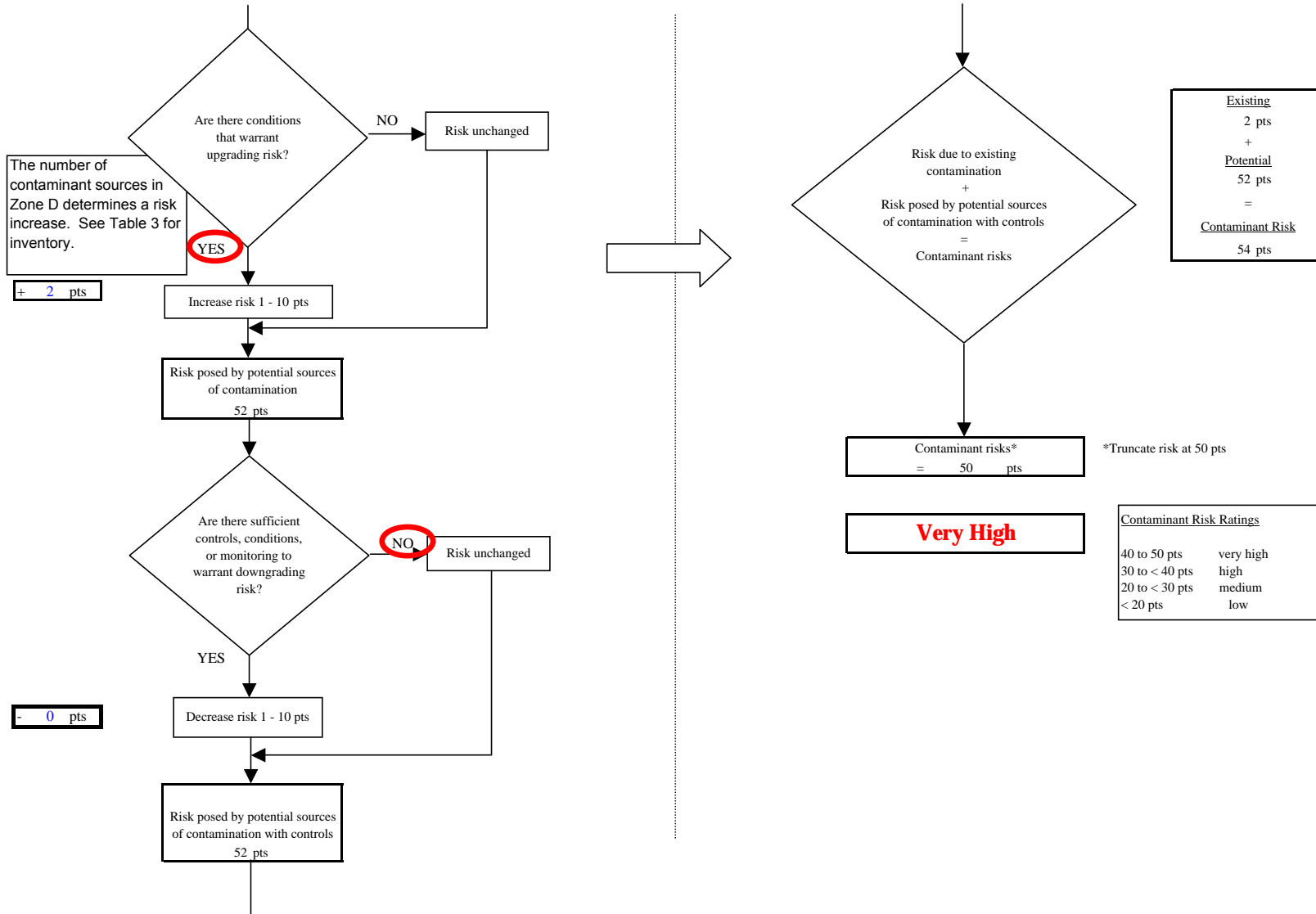
**Chart 5. Contaminant risks for Nikiski Senior Center (248014.001) - Nitrates and Nitrites**



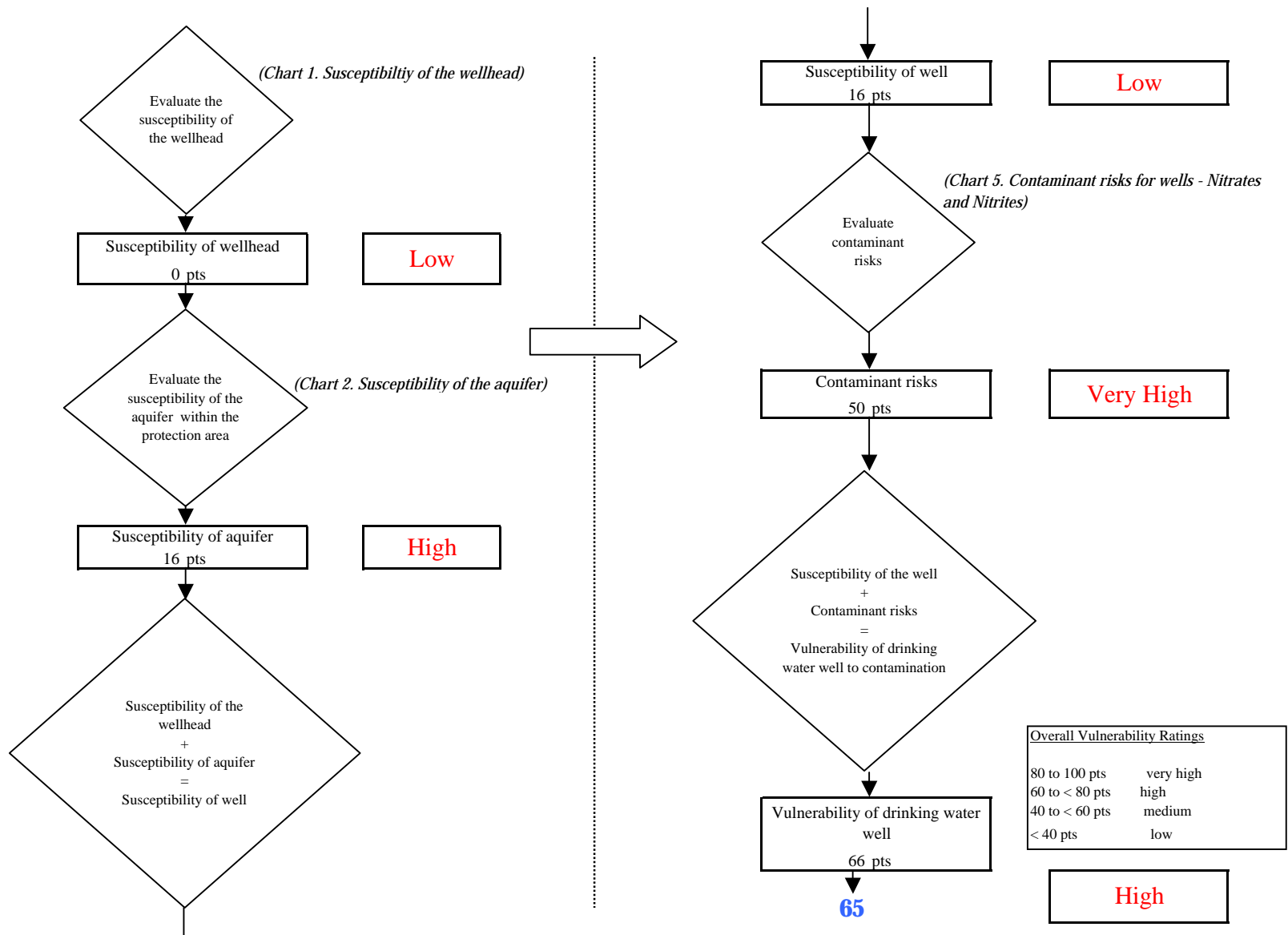
**Chart 5. Contaminant risks for Nikiski Senior Center (248014.001) - Nitrates and Nitrites**



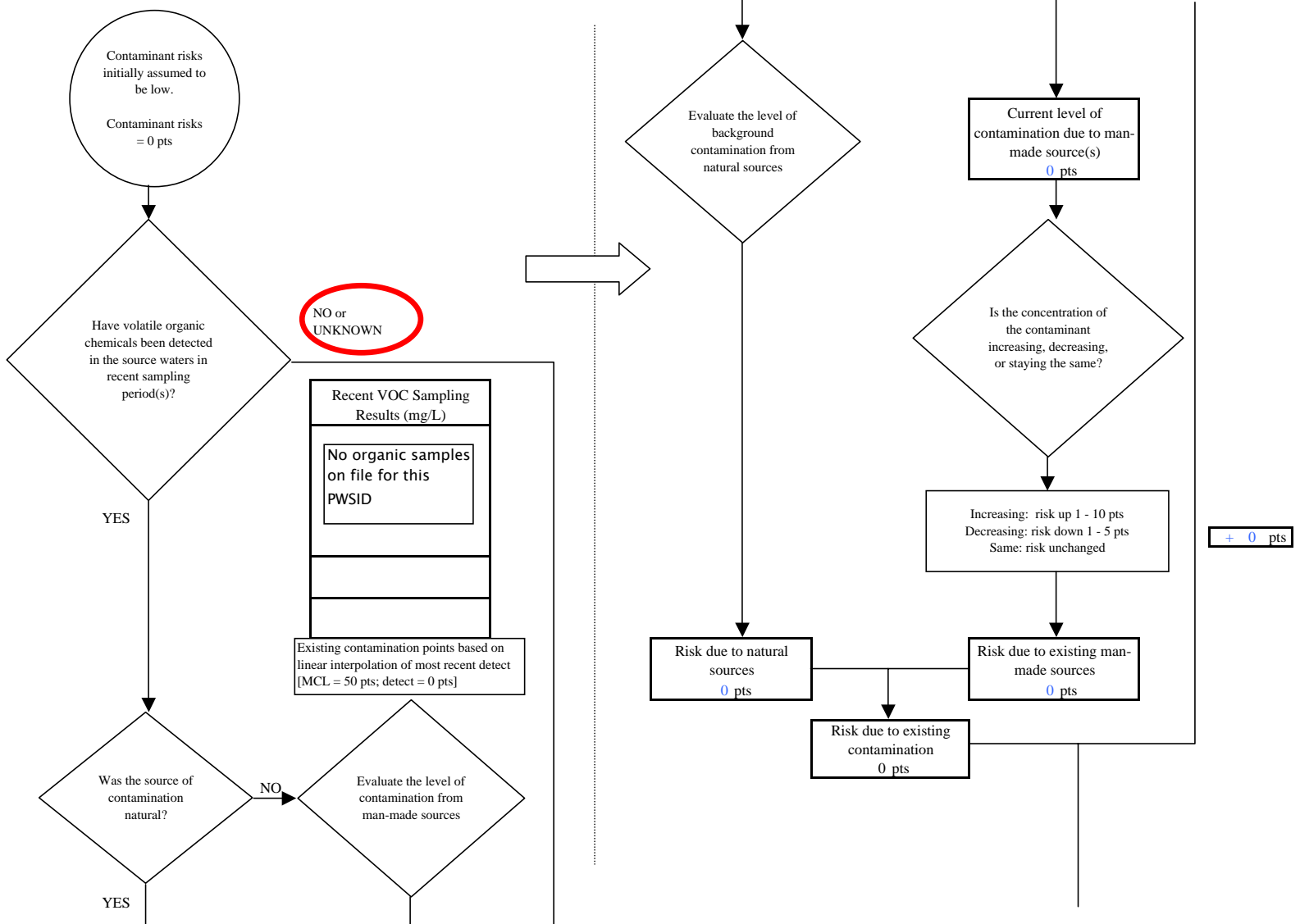
**Chart 5. Contaminant risks for Nikiski Senior Center (248014.001) - Nitrates and Nitrites**



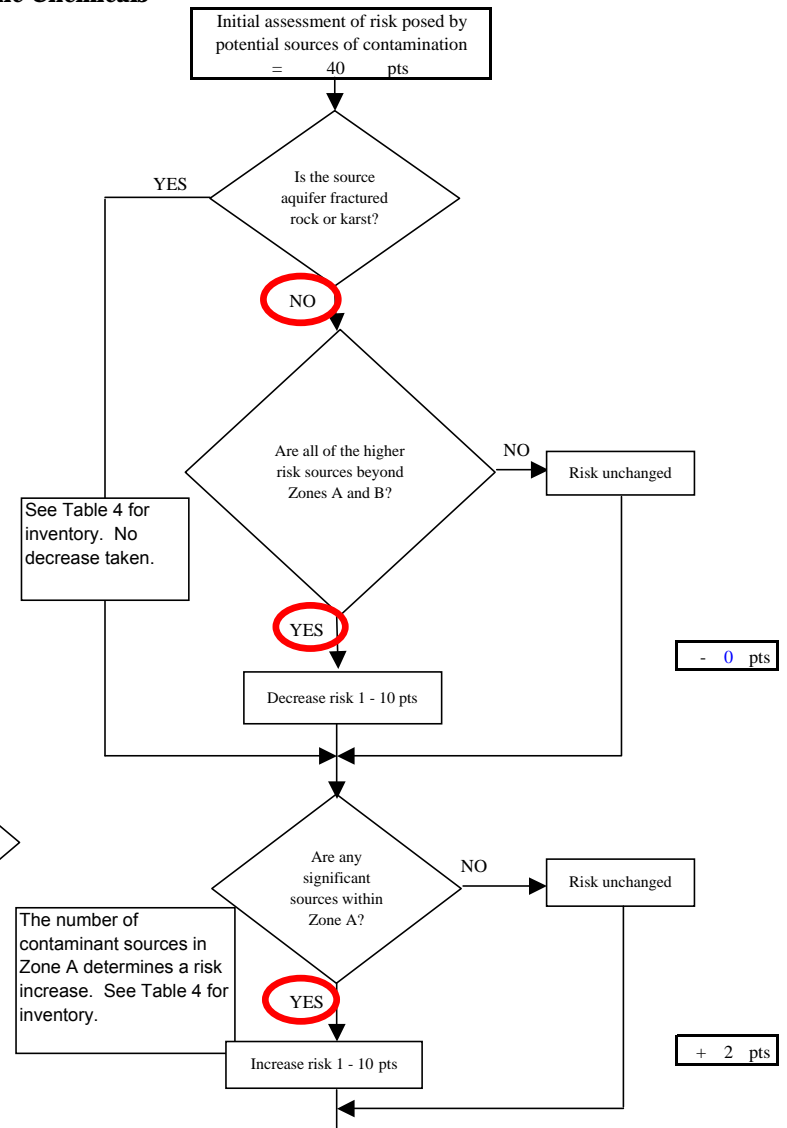
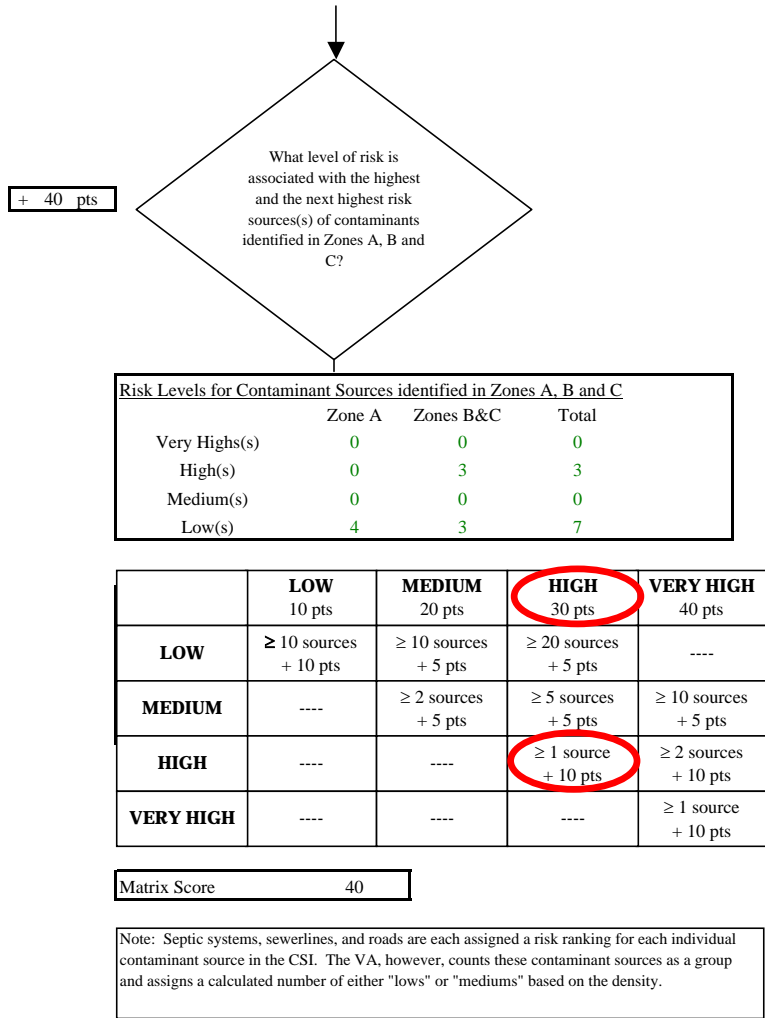
**Chart 6. Vulnerability analysis for Nikiski Senior Center (248014.001) - Nitrates and Nitrites**



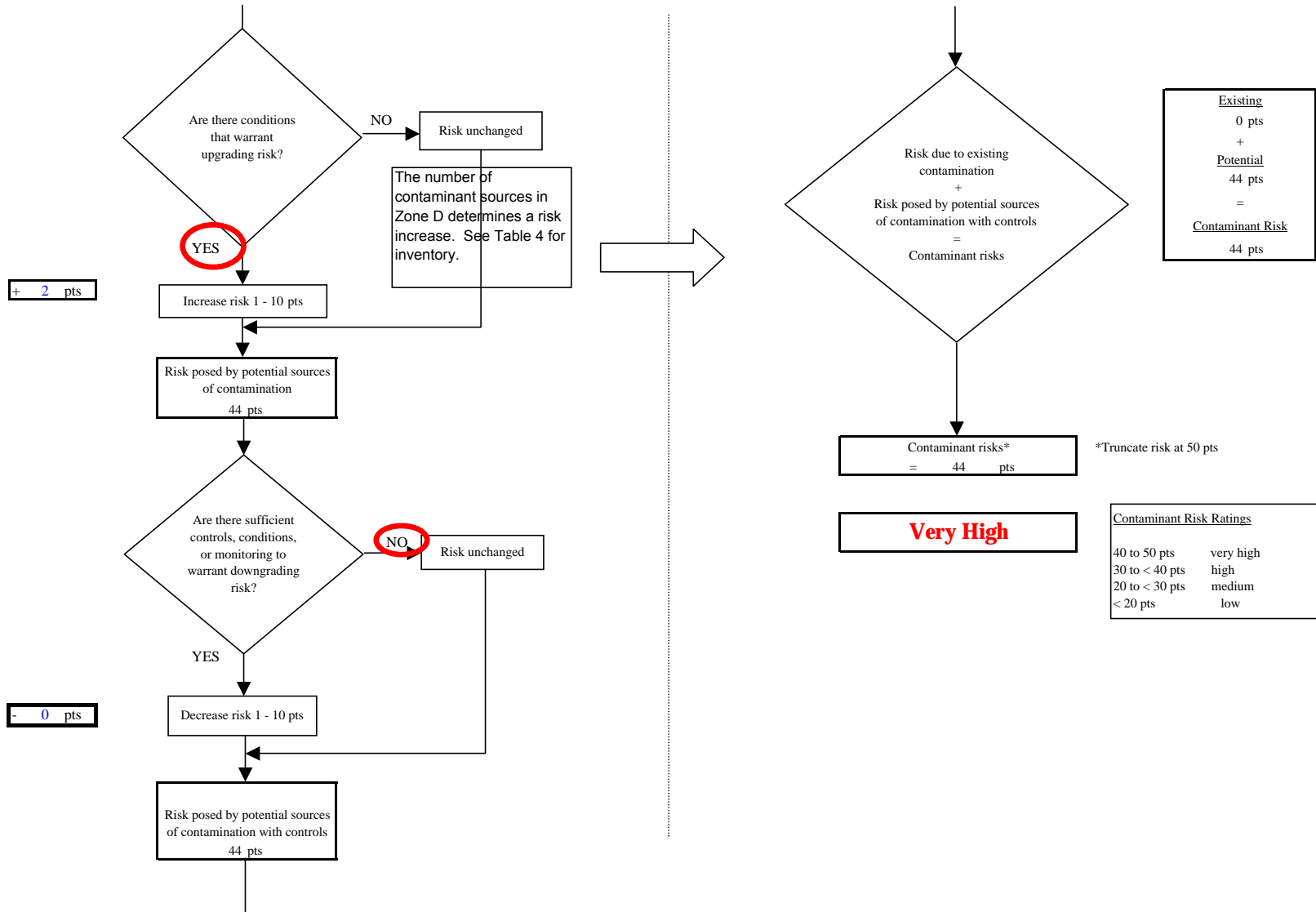
**Chart 7. Contaminant risks for Nikiski Senior Center (248014.001) - Volatile Organic Chemicals**



**Chart 7. Contaminant risks for Nikiski Senior Center (248014.001) - Volatile Organic Chemicals**



**Chart 7. Contaminant risks for Nikiski Senior Center (248014.001) - Volatile Organic Chemicals**





**Chart 8. Vulnerability analysis for Nikiski Senior Center (248014.001) - Volatile Organic Chemicals**

