

Source Water Assessment

A Hydrogeologic Susceptibility and
Vulnerability Assessment for
Inlet Fisheries, Inc. - Naknek
Drinking Water System,
Naknek, Alaska

PWSID # 262282.002

February 2004

DRINKING WATER PROTECTION PROGRAM REPORT 1196
Alaska Department of Environmental Conservation

Source Water Assessment for Inlet Fisheries, Inc. - Naknek Drinking Water System Naknek, Alaska

PWSID # 262282.002

DRINKING WATER PROTECTION PROGRAM REPORT 1196

The Drinking Water Protection Program (DWPP) is producing Source Water Assessments in compliance with the Safe Drinking Water Act Amendments of 1996. Each assessment includes a delineation of the source water area, an inventory of potential and existing contaminant sources that may impact the water, a risk ranking for each of these contaminants, and an evaluation of the potential vulnerability of these drinking water sources.

These assessments are intended to provide public water systems owners/operators, communities, and local governments with the best available information that may be used to protect the quality of their drinking water. The assessments combine information obtained from various sources, including the U.S. Environmental Protection Agency, Alaska Department of Environmental Conservation (ADEC), public water system owners/operators, and other public information sources. The results of this assessment are subject to change if additional data becomes available. It is anticipated this assessment will be updated every five years to reflect any changes in the vulnerability and/or susceptibility of public drinking water source. If you have any additional information that may affect the results of this assessment, please contact the Program Coordinator of DWPP, (907) 269-7521.

CONTENTS

EXECUTIVE SUMMARY.....	1	INVENTORY OF POTENTIAL AND EXISTING CONTAMINANT SOURCES	2
INLET FISHERIES, INC. - NAKNEK PUBLIC DRINKING WATER SYSTEM	1	RANKING OF CONTAMINANT RISKS	2
INLET FISHERIES, INC. - NAKNEK DRINKING WATER PROTECTION AREA	2	VULNERABILITY OF INLET FISHERIES, INC. - NAKNEK DRINKING WATER SYSTEM	3

TABLES

Table 1. Definition of Zones	2
Table 2. Susceptibility	3
Table 3. Contaminant Risks	3
Table 4. Overall Vulnerability.....	4

APPENDICES

APPENDIX	A. Inlet Fisheries, Inc. - Naknek Drinking Water Protection Area (Map A)
	B. Contaminant Source Inventory for Inlet Fisheries, Inc. - Naknek (Table 1) Contaminant Source Inventory and Risk Ranking for Inlet Fisheries, Inc. - Naknek – Bacteria and Viruses (Table 2) Contaminant Source Inventory and Risk Ranking for Inlet Fisheries, Inc. - Naknek – Nitrates/Nitrites (Table 3) Contaminant Source Inventory and Risk Ranking for Inlet Fisheries, Inc. - Naknek – Volatile Organic Chemicals (Table 4)
	C. Inlet Fisheries, Inc. - Naknek Drinking Water Protection Area and Potential and Existing Contaminant Sources (Map C)
	D. Vulnerability Analysis for Contaminant Source Inventory and Risk Ranking for Inlet Fisheries, Inc. - Naknek Public Drinking Water Source (Charts 1 – 8)

Source Water Assessment for Inlet Fisheries, Inc. - Naknek Source of Public Drinking Water, Naknek, Alaska

Drinking Water Protection Program Alaska Department of Environmental Conservation

EXECUTIVE SUMMARY

Inlet Fisheries, Inc. - Naknek has three Public Water System (PWS) wells. The well (PWSID# 262282.002) has been used as a drinking water source since it was drilled in 1998. This source water assessment report is exclusively limited to PWSID #262282.002.

The well is a Class B (transient/non-community) water system located approximately on the west side of the facility, on the west side of Dock Road in Naknek, Alaska. Available records indicate that there are four, 500-gallon poly storage tanks, and that the drinking water is treated with calcium hypochlorite. The wellhead received a susceptibility rating of **Medium** and the aquifer received a susceptibility rating of **Very High**. Combining these two ratings produce a **High** rating for the natural susceptibility of the well. Identified potential and current sources of contaminants for the primary public drinking water source include: injection wells, seafood processing, aboveground fuel tanks, water supply wells, boat yards and marinas, paint sales/service, electric power generation, and airports. These identified potential and existing sources of contamination are considered as sources of bacteria and viruses, nitrates and/or nitrites, and volatile organic chemicals. Overall, the water well received a vulnerability rating of **High** for the bacteria and viruses, a vulnerability rating of **High** for nitrates and nitrites, and a vulnerability rating of **High** for volatile organic chemicals contaminant categories.

INLET FISHERIES, INC. - NAKNEK PUBLIC DRINKING WATER SYSTEM

The Inlet Fisheries, Inc. - Naknek water well is a Class B (transient/non-community) public water system. The system consists of three wells. PWSID #262282.002 is located on the west side of the facility, on the west side of Dock Road in Naknek, Alaska (Sec. 3, T17S, R47W, Seward Meridian; see Map A of Appendix A). Naknek is the primary fishery center in Bristol Bay, located about 12 miles northwest of King Salmon and 300 miles southwest

of Anchorage. The community has a population of 642 (ADCED, 2003). Inlet Fisheries, Inc. - Naknek has a seasonal non-resident population of 140 people. Average annual precipitation in Naknek is 20 inches, including approximately 45 inches of snowfall. Temperatures range from 42 to 63°F in summer and -4 to 16°F in winter. Temperatures can be as extreme as -46 to 88°F.

The community of Naknek gets most of their water supply from individual wells. Most households are served by the piped sewage collection system and the remaining households have individual septic tanks (ADCED, 2003). Naknek receives electrical power from the Naknek Electric Association operated by the REA Cooperative. Power generating facilities are fueled by diesel. Refuse is collected by the Patterson Sanitation Company and trucked to the landfill located five miles outside of the community (ADCED, 2003).

According to information supplied by ADEC for the Inlet Fisheries, Inc. - Naknek PWS, the depth of the primary water well is 91 feet below the ground surface and is assumed to be screened in gravel in a confined aquifer, based on well details for PWSID #262282.001. Confined aquifers are likely less susceptible to groundwater impacts resulting from the downward migration of surface contaminants. The well is located in a suspected floodplain.

Information acquired from the most recent sanitary survey for the public water system well PWSID #262282.001, indicated that the land surface was sloped away from the well. Generally, land surfaces that slope away from the wellhead promote surface water drainage, which reduces potential of contaminant migration down the well casing annulus. Based on well construction details for PWSID #262282.001, and the well construction date (1998), it is assumed the well is grouted according to ADEC regulations. Proper grouting provides added protection against contaminants traveling along the well casing annulus and into source waters.

Naknek is located in an area that has been mapped as being underlain by isolated masses of permafrost;

predominantly fine-grained deposits. Permafrost is usually found either at a considerable depth as relict permafrost or near the surface as thin lenses of small extent where ground insulation is high or low. The terrain in this area consists of low hills with many shallow lakes. The lakes resulted from the delayed melting of buried ice blocks (ADOT&PF, 1982).

INLET FISHERIES, INC. - NAKNEK DRINKING WATER PROTECTION AREA

In order to evaluate whether a drinking water source is at risk, we must first evaluate what are the most likely pathways for surface contamination to reach the groundwater. These areas are determined by looking at the characteristics of the soil, groundwater, aquifer, and well.

The most probable area for contamination to reach the drinking water well is the area that contributes water to the well, the groundwater recharge area. This area is designated as the drinking water protection area (DWPA). Because releases of contaminants within the protection area are most likely to impact the drinking water well, this area will serve as the focus for voluntary protection efforts. An analytical calculation was used to determine the size and shape of the DWPA for the Inlet Fisheries, Inc. - Naknek PWS. The input parameters describing the attributes of the aquifer in this calculation were adopted from Groundwater (Freeze and Cherry, 1979). Available geology and groundwater contours were also considered to take into account any uncertainties in groundwater flow and aquifer characteristics to arrive at a meaningful protection area.

The protection areas established for wells by the ADEC are usually separated into four zones, limited by the watershed. These zones correspond to differences in the time-of-travel (TOT) of the water moving through the aquifer to the well (Please refer to the Guidance Manual for Class B Public Water Systems for additional information).

The time of travel for contaminants within the water varies and is dependent on the physical and chemical characteristics of each contaminant. The following is a summary of the four protection area zones for wells and the calculated time-of-travel for each:

Table 1. Definition of Zones

Zone	Definition
A	¼ the distance for the 2-yr. time-of-travel
B	Less than the 2 year time-of-travel
C	Less Than the 5 year time-of-travel
D	Less than the 10 year time-of-travel

The DWPA for the Inlet Fisheries, Inc. - Naknek PWS was determined using an analytical calculation and includes Zones A, B, C and D (See Map A of Appendix A).

INVENTORY OF POTENTIAL AND EXISTING CONTAMINANT SOURCES

The Drinking Water Protection Program has completed an inventory of potential and existing sources of contamination within the Inlet Fisheries, Inc. - Naknek DWPA. This inventory was completed through a search of agency records and other publicly available information. Potential sources of contamination to the drinking water aquifer include a wide range of categories and types. Potential drinking water contaminants are found within agricultural, residential, commercial, and industrial areas, but can also occur within areas that have little or no development.

For the basis of all Class B public water system assessments, three categories of drinking water contaminants were inventoried. They include:

- Bacteria and viruses,
- Nitrates and/or nitrites,
- Volatile organic chemicals.

The sources are displayed on Map C of Appendix C and summarized in Table 1 of Appendix B.

RANKING OF CONTAMINANT RISKS

Once the potential and existing sources of contamination have been identified, they are assigned a ranking according to what type and level of risk they represent. Ranking of contaminant risks for a “potential” or “existing” source of contamination is a function of toxicity and volumes of specific contaminants associated with that source. Rankings include:

- Low,
- Medium,
- High, and
- Very High.

The time-of-travel for contaminants within the water varies and is dependent on the physical and chemical characteristics of each contaminant. Bacteria and Viruses are only inventoried in Zones A and B because of their short life span. Only “Very High” and “High” rankings are inventoried within the outer

Zone D due to the probability of contaminant dilution by the time the contaminants get to the well.

Tables 2 through 4 in Appendix B contain the ranking of potential and existing sources of contamination with respect to bacteria and viruses, nitrates and/or nitrites, and volatile organic chemicals.

VULNERABILITY OF THE INLET FISHERIES, INC. - NAKNEK DRINKING WATER SYSTEM

Vulnerability of a drinking water source to contamination is a combination of two factors:

- Natural susceptibility, and
- Contaminant risks.

Appendix D contains eight charts, which together form the 'Vulnerability Analysis' for a source water assessment for a public drinking water source. Chart 1 analyzes the 'Susceptibility of the Wellhead' to contamination by looking at the construction of the well and its surrounding area. Chart 2 analyzes the 'Susceptibility of the Aquifer' to contamination by looking at the naturally occurring attributes of the water source and influences on the groundwater system that might lead to contamination. Chart 3 analyzes 'Contaminant Risks' for the drinking water source with respect to bacteria and viruses. The 'Contaminant Risks' portion of the analysis considers potential sources of contaminants as well as a review of contamination that has or may have occurred, but has not arrived or been detected at the well. Lastly, Chart 4 contains the 'Vulnerability Analysis for Bacteria and Viruses'. Charts 5 through 8 contain the Contaminant Risks and Vulnerability Analyses for nitrates and nitrites and volatile organic chemicals, respectively.

A score for the Natural Susceptibility is reached by considering the properties of the well and the aquifer.

$$\begin{aligned}
 &\text{Susceptibility of the Wellhead (0 – 25 Points)} \\
 &\quad \text{(Chart 1 of Appendix D)} \\
 &\quad + \\
 &\text{Susceptibility of the Aquifer (0 – 25 Points)} \\
 &\quad \text{(Chart 2 of Appendix D)} \\
 &\quad = \\
 &\text{Natural Susceptibility (Susceptibility of the Well)} \\
 &\quad \text{(0 – 50 Points)}
 \end{aligned}$$

A ranking is assigned for the Natural Susceptibility according to the point score:

Natural Susceptibility Ratings	
40 to 50 pts	Very High
30 to < 40 pts	High
20 to < 30 pts	Medium
< 20 pts	Low

The Inlet Fisheries, Inc. – Naknek water well is in a confined aquifer. Confined aquifers are less susceptible to potential groundwater quality impacts posed by the migration of surface water contaminants downward from the surface. Table 2 shows the Susceptibility scores and ratings for both wells in this PWS.

Table 2. Susceptibility

	Score	Rating
Susceptibility of the Wellhead	10	Medium
Susceptibility of the Aquifer	21	Very High
Natural Susceptibility	31	High

Contaminant risks to a drinking water source depend on the type, number or density, and distribution of contaminant sources. This score has been derived from an examination of existing and historical contamination that has been detected at the drinking water source through routine sampling. It also evaluates potential sources of contamination. Flow charts are used to assign a point score, and ratings are assigned in the same way as for the natural susceptibility:

Contaminant Risk Ratings	
40 to 50 pts	Very High
30 to < 40 pts	High
20 to < 30 pts	Medium
< 20 pts	Low

Table 3 summarizes the Contaminant Risks for each category of drinking water contaminants.

Table 3. Contaminant Risks

Category	Score	Rating
Bacteria and Viruses	40	Very High
Nitrates and/or Nitrites	40	Very High

Finally, an overall vulnerability score is assigned for each water system by combining each of the contaminant risk scores with the natural susceptibility score:

$$\begin{array}{r}
 \text{Natural Susceptibility (0 – 50 points)} \\
 + \\
 \text{Contaminant Risks (0 – 50 points)} \\
 = \\
 \text{Vulnerability of the} \\
 \text{Drinking Water Source to Contamination (0 – 100).}
 \end{array}$$

Again, rankings are assigned according to a point score:

Overall Vulnerability Ratings	
80 to 100 pts	Very High
60 to < 80 pts	High
40 to < 60 pts	Medium
< 40 pts	Low

Table 4 contains the overall vulnerability scores (0 – 100) and ratings for each of the three categories of drinking water contaminants. Note: scores are rounded off to the nearest five.

Table 4. Overall Vulnerability

Category	Score	Rating
Bacteria and Viruses	70	High
Nitrates and Nitrites	70	High
Volatile Organic Chemicals	75	High

Bacteria and Viruses

The contaminant risk for bacteria and viruses is **Very High**. The risk is primarily attributed to the presence of injection wells and seafood processing in Zone A (see Table 2 – Appendix B).

No positive bacteria counts were reported in recent (within five years) sampling events (See Chart 3 – Contaminant Risks for Bacteria and Viruses in Appendix D). Only a small amount of bacteria and viruses are required to endanger public health.

After combining the contaminant risk for bacteria and viruses with the natural susceptibility of the well, the

overall vulnerability of the well to contamination is **High**.

Nitrates and Nitrites

The contaminant risk for nitrates and nitrites is **Very High**. The risk to this source of public drinking water is primarily attributed to the presence of an injection well in Zone (see Table 3 – Appendix 3).

Nitrates are very mobile, moving at approximately the same rate as water. The sampling history for this well indicates that nitrates have not been detected in recent sampling events. Nitrate concentrations in uncontaminated groundwater are typically less than 2 mg/L; therefore, nitrate concentrations above 2 mg/L may be indicative of man-made sources (See Chart 5 - Contaminant Risks for Nitrates and/or Nitrites in Appendix D).

Nitrate levels are often derived from the decomposition of organic matter in soils. After combining the contaminant risk for nitrates and nitrites with the natural susceptibility of the well, the overall vulnerability of the well to nitrate and nitrite contamination is **High**.

Volatile Organic Chemicals

The contaminant risk for volatile organic chemicals is **Very High**. The risk is primarily attributed to the presence of airports in Zones B and C (see Table 4 – Appendix B).

No recent sampling data was available in ADEC records for Inlet Fisheries, Inc. - Naknek (See Chart 7 – Contaminant Risks for Volatile Organic Chemicals in Appendix D).

After combining the contaminant risk for volatile organic chemicals with the natural susceptibility of the well, the overall vulnerability of the well to contamination is **High**.

Using the Source Water Assessment

This assessment of contaminant risks can be used as a foundation for local voluntary protection efforts as well as a basis for the continuous efforts on the part of Inlet Fisheries, Inc. - Naknek and the community of Naknek to protect public health. It is anticipated that Source Water Assessments will be updated every five years to reflect any changes in the vulnerability and/or susceptibility of the drinking water source.

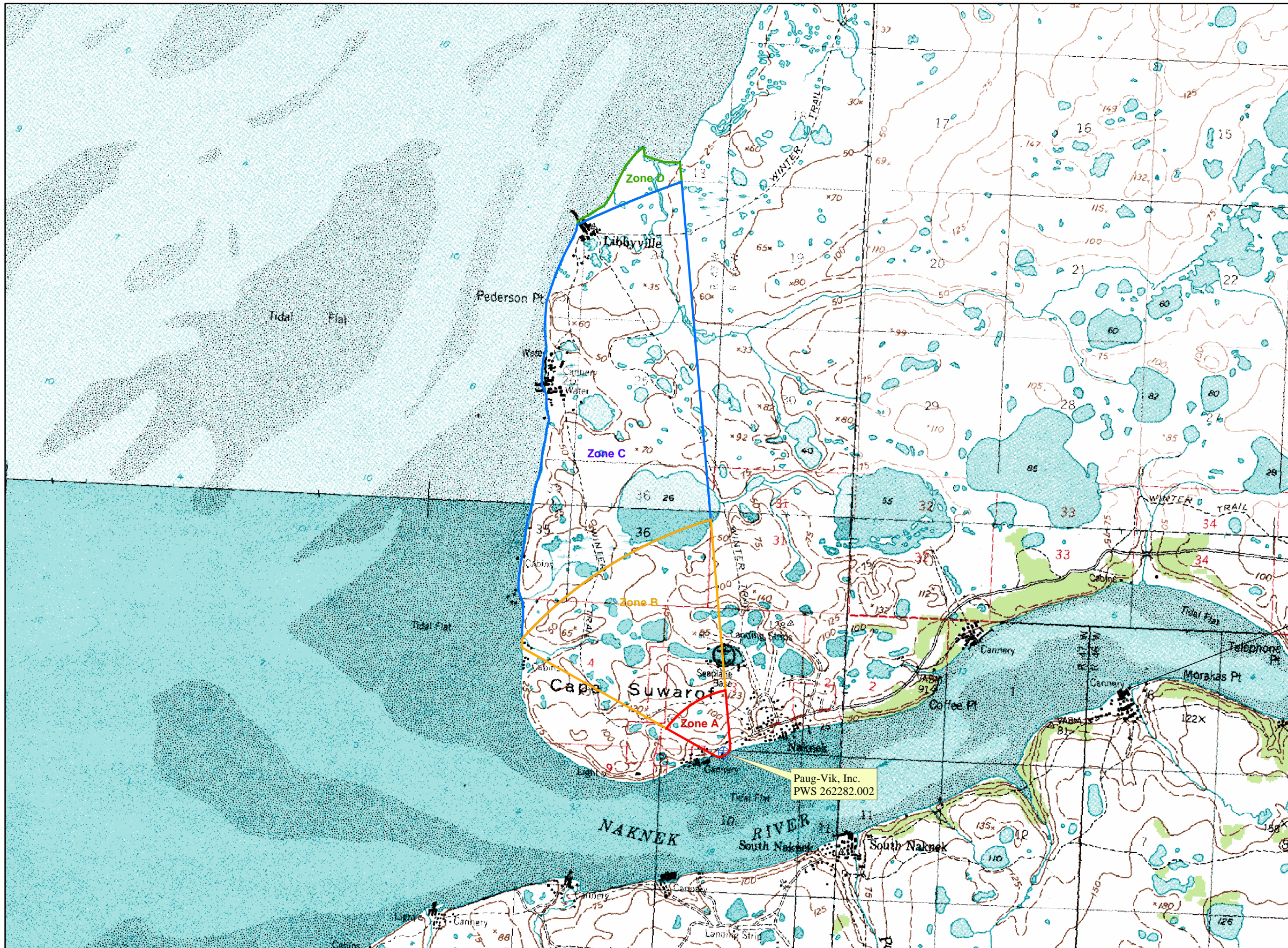
REFERENCES

- Alaska Department of Community and Economic Development (ADCED), 2003 [WWW document]. URL: http://www.dced.state.ak.us/cbd/commdb/CF_COMDB.htm
- Alaska Department of Environmental Conservation, Contaminated Sites Database, 2003 [WWW database], URL http://www.state.ak.us/dec/dspar/csites/cs_search.htm
- Alaska Department of Environmental Conservation, Leaking Underground Storage Tank Database, 2003 [WWW database], URL http://www.dec.state.ak.us/spar/stp/ust/search/fac_search.asp
- Alaska Department of Transportation and Public Facilities (ADOT&PF), 1982, Engineering Geology and Soils Report, North Naknek Materials Investigation.
- Freeze, R. A., and Cherry, J.A. 1979, Groundwater, Prentice-Hall, Englewood Cliffs, New Jersey
- United States Environmental Protection Agency (EPA), 2002 [WWW document]. URL <http://www.epa.gov/safewater/mcl.html>.

APPENDIX A

Drinking Water Protection Area Location Map (Map A)

Public Water Well System for PWS #262282.002 Paug-Vik, Inc. (Former Inlet Fisheries, Inc. - Naknek)



LEGEND

- Public Water System Well
- Hydrography/Physical**
 - Parcels
 - Stream
 - Lake or Pond
 - Contours
- Transportation**
 - Primary Route (Class 1)
 - Secondary Route (Class 2)
 - Road (Class 3)
 - Road (Class 4)
 - Road (Class 5, Four-wheel drive)
- Groundwater Protection Zones**
 - Zone A Protection Area- Several Months Travel Time
 - Zone B Protection Area- 2 Years Travel Time
 - Zone C Protection Area- 5 Years Travel Time
 - Zone D Protection Area- 10 Years Travel Time or Watershed Boundary

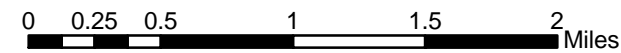
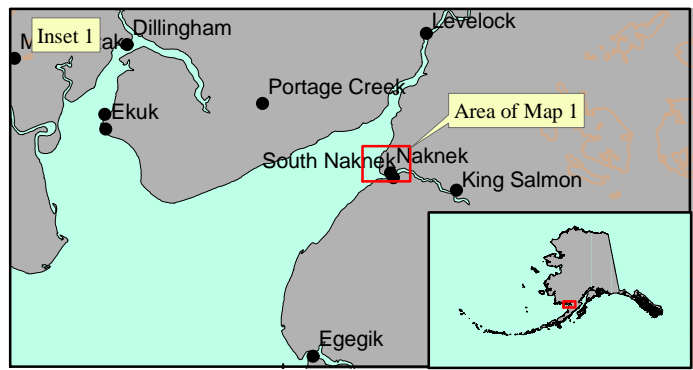
Data Sources:
 Contaminant Sources, Public Water System Wells, Contours
 Alaska Department of Environmental Conservation (ADEC)

Critical Facilities, Federal Emergency Management Agency (FEMA)

All other data:
 United States Geological Survey (USGS)

Drinking Water Protection Areas based on "Alaska Drinking Water Protection Program - Guidance Manual for Class B Public Water Systems" published by ADEC

URS Corporation does not guarantee the accuracy or validity of the data provided.



Paug-Vik, Inc. (Former Inlet Fisheries, Inc. - Naknek)
 PWS 262282.002

APPENDIX B

Contaminant Source Inventory and Risk Rankings (Tables 1-4)

Table 1**Contaminant Source Inventory for
Inlet Fisheries, Inc. - Naknek****PWSID 262282.002**

Contaminant Source Type	Contaminant Source ID	CS ID tag	Zone	Map Number	Comments
Injection wells (Class V) Large-Capacity Septic System (Drainfield Disposal Method)	D10	D10-01	A	C	Assumed that no municipal sewer service available
Seafood processing	N10	N10-01	A	C	
Tanks, gasoline (above ground)	T10	T10-01	A	C	
Tanks, heating oil, nonresidential (aboveground)	T14	T14-01	A	C	
Water supply wells	W09	W09-01	A	C	Two drinking water wells in Zone A and two drinking water wells in Zone C
Boat yards and marinas	X15	X15-01	A	C	
Electric power generation (fossil fuels)	X36	X36-01	A	C	Based on site plan, power is generated on site
Airports	X14	X14-01	B	C	
Airports	X14	X14-02	C	C	
Paint sales /service	C32	C32-01	D	C	
Seafood processing	N10	N10-02	D	C	
Tanks, diesel (above ground)	T06	T06-01	D	C	
Tanks, diesel (above ground)	T06	T06-02	D	C	
Tanks, diesel (above ground)	T06	T06-03	D	C	
Tanks, gasoline (above ground)	T10	T10-02	D	C	
Boat yards and marinas	X15	X15-02	D	C	
Electric power generation (fossil fuels)	X36	X36-02	D	C	

*Contaminant Source Inventory and Risk Ranking for
Inlet Fisheries, Inc. - Naknek
Sources of Bacteria and Viruses*

PWSID 262282.002

Table 2

<i>Contaminant Source Type</i>	<i>Contaminant Source ID</i>	<i>CS ID tag</i>	<i>Zone</i>	<i>Risk Ranking for Analysis</i>	<i>Map Number</i>	<i>Comments</i>
Injection wells (Class V) Large-Capacity Septic System (Drainfield Disposal Method)	D10	D10-01	A	High	C	Assumed that no municipal sewer service available
Seafood processing	N10	N10-01	A	Medium	C	
Seafood processing	N10	N10-02	D	Medium	C	

*Contaminant Source Inventory and Risk Ranking for
Inlet Fisheries, Inc. - Naknek
Sources of Nitrates/Nitrites*

PWSID 262282.002

Table 3

<i>Contaminant Source Type</i>	<i>Contaminant Source ID</i>	<i>CS ID tag</i>	<i>Zone</i>	<i>Risk Ranking for Analysis</i>	<i>Map Number</i>	<i>Comments</i>
Injection wells (Class V) Large-Capacity Septic System (Drainfield Disposal Method)	D10	D10-01	A	High	C	Assumed that no municipal sewer service available
Seafood processing	N10	N10-01	A	Low	C	
Airports	X14	X14-01	B	Low	C	
Airports	X14	X14-02	C	Low	C	
Seafood processing	N10	N10-02	D	Low	C	

*Contaminant Source Inventory and Risk Ranking for
Inlet Fisheries, Inc. - Naknek
Sources of Volatile Organic Chemicals*

PWSID 262282.002

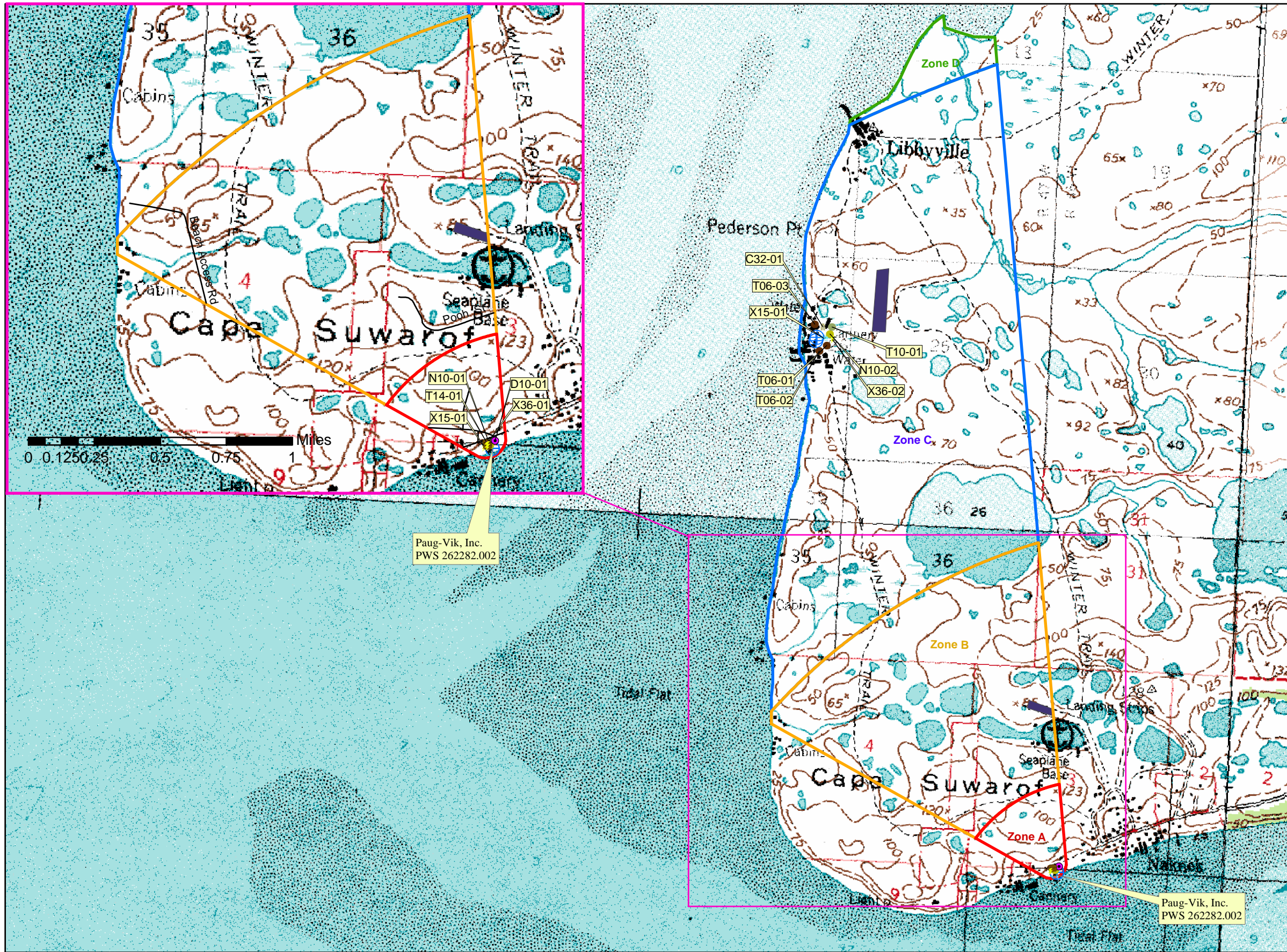
Table 4

<i>Contaminant Source Type</i>	<i>Contaminant Source ID</i>	<i>CS ID tag</i>	<i>Zone</i>	<i>Risk Ranking for Analysis</i>	<i>Map Number</i>	<i>Comments</i>
Injection wells (Class V) Large-Capacity Septic System (Drainfield Disposal Method)	D10	D10-01	A	Low	C	Assumed that no municipal sewer service available
Tanks, gasoline (above ground)	T10	T10-01	A	Medium	C	
Tanks, heating oil, nonresidential (aboveground)	T14	T14-01	A	Low	C	
Boat yards and marinas	X15	X15-01	A	Low	C	
Electric power generation (fossil fuels)	X36	X36-01	A	Medium	C	Based on site plan, power is generated on site
Airports	X14	X14-01	B	High	C	
Airports	X14	X14-02	C	High	C	
Paint sales /service	C32	C32-01	D	Medium	C	
Tanks, diesel (above ground)	T06	T06-01	D	Medium	C	
Tanks, diesel (above ground)	T06	T06-02	D	Medium	C	
Tanks, diesel (above ground)	T06	T06-03	D	Medium	C	
Tanks, gasoline (above ground)	T10	T10-02	D	Medium	C	
Boat yards and marinas	X15	X15-02	D	Low	C	
Electric power generation (fossil fuels)	X36	X36-02	D	Medium	C	

APPENDIX C

Drinking Water Protection Area and Potential and Existing Contaminant Sources (Map C)

Public Water Well System for PWS #262282.002 Paug-Vik, Inc. (Former Inlet Fisheries, Inc. - Naknek)
Showing Potential and Existing Sources of Contamination



LEGEND

- Public Water System Well

Hydrography/Physical

- Parcels
- Stream
- Lake or Pond
- Contours

Transportation

- Primary Route (Class 1)
- Secondary Route (Class 2)
- Road (Class 3)
- Road (Class 4)
- Road (Class 5, Four-wheel drive)

Groundwater Protection Zones

- Zone A Protection Area—Several Months Travel Time
- Zone B Protection Area—2 Years Travel Time
- Zone C Protection Area—5 Years Travel Time
- Zone D Protection Area—10 Years Travel Time or Watershed Boundary

Existing or Potential Contaminant Sources

- Paint sales or service (C32)
- Injection Wells (Class V) Large-Capacity Septic System (D10)
- Seafood Processing (N10)
- Tanks, diesel (aboveground) (T06)
- Tanks, gasoline (aboveground) (T10)
- Tanks, Heating Oil, non-Residential (underground) (T14)
- Boat yards and marinas (X15)
- Electric Power Generation (Fossil Fuels) (X36)
- Airports/Landing Strips (X14)

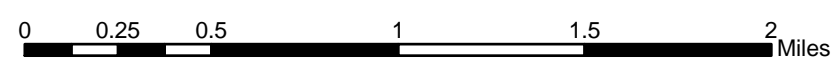
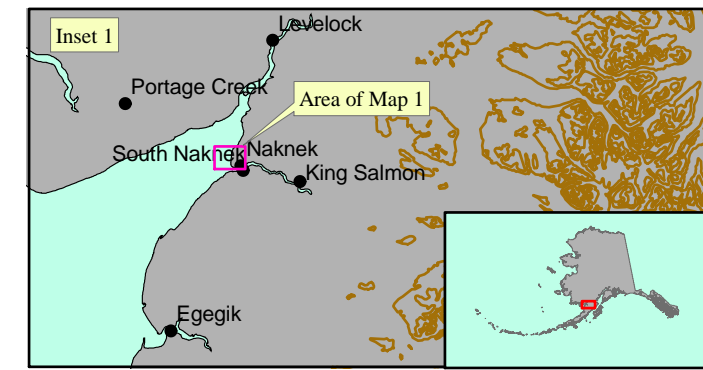
Data Sources:
 Contaminant Sources, Public Water System Wells, Contours
 Alaska Department of Environmental Conservation (ADEC)

Critical Facilities, Federal Emergency Management Agency (FEMA)

All other data:
 United States Geological Survey (USGS)

Drinking Water Protection Areas based on "Alaska Drinking Water Protection Program - Guidance Manual for Class B Public Water Systems" published by ADEC

URS Corporation does not guarantee the accuracy or validity of the data provided.



APPENDIX D

Vulnerability Analysis for Public Drinking Water Source (Charts 1-8)

Chart 1. Susceptibility of the wellhead - Inlet Fisheries, Inc. - Naknek (PWS No. 262282.002)

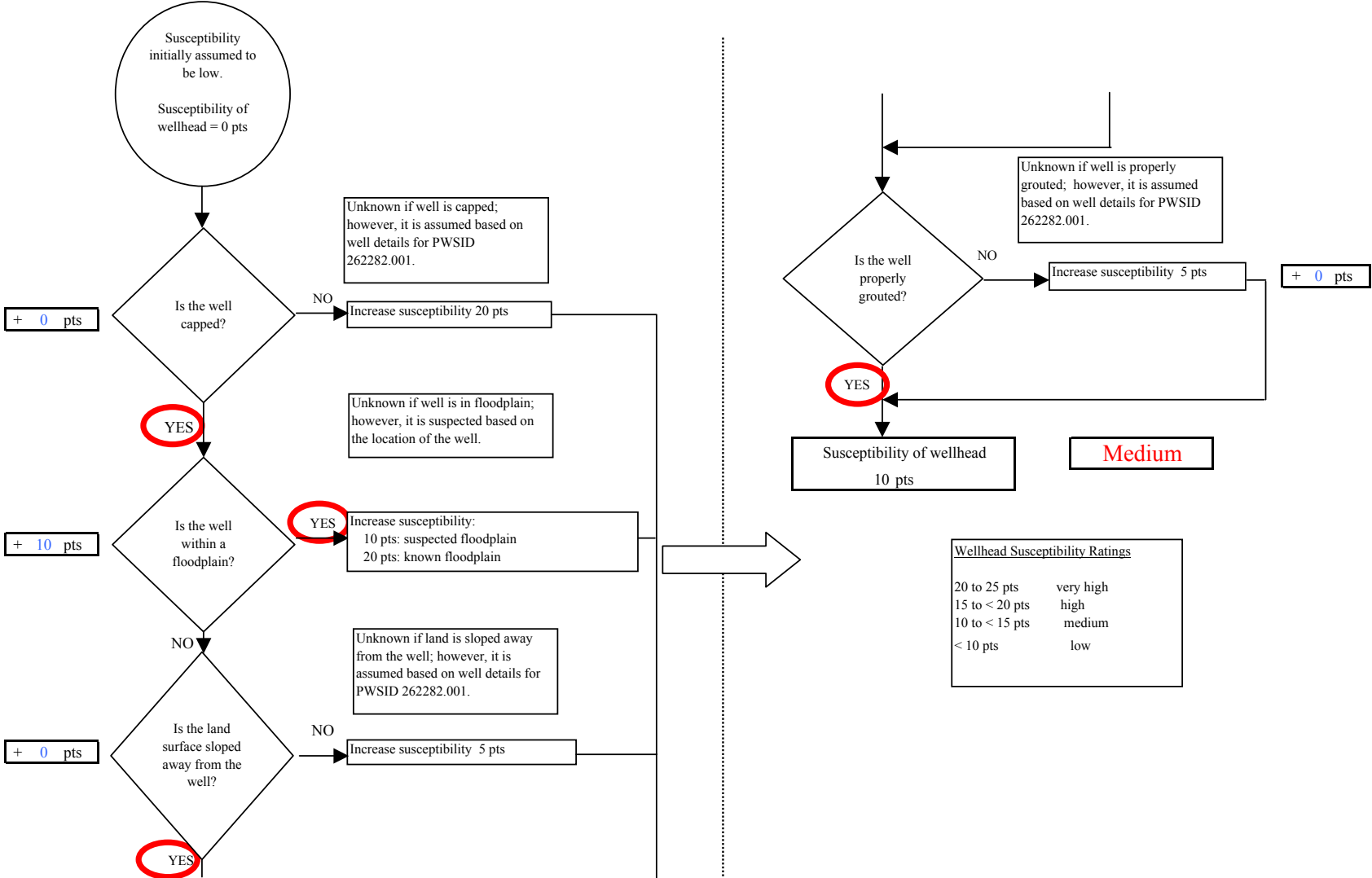


Chart 2. Susceptibility of the aquifer Inlet Fisheries, Inc. - Naknek (PWS No. 262282.002)

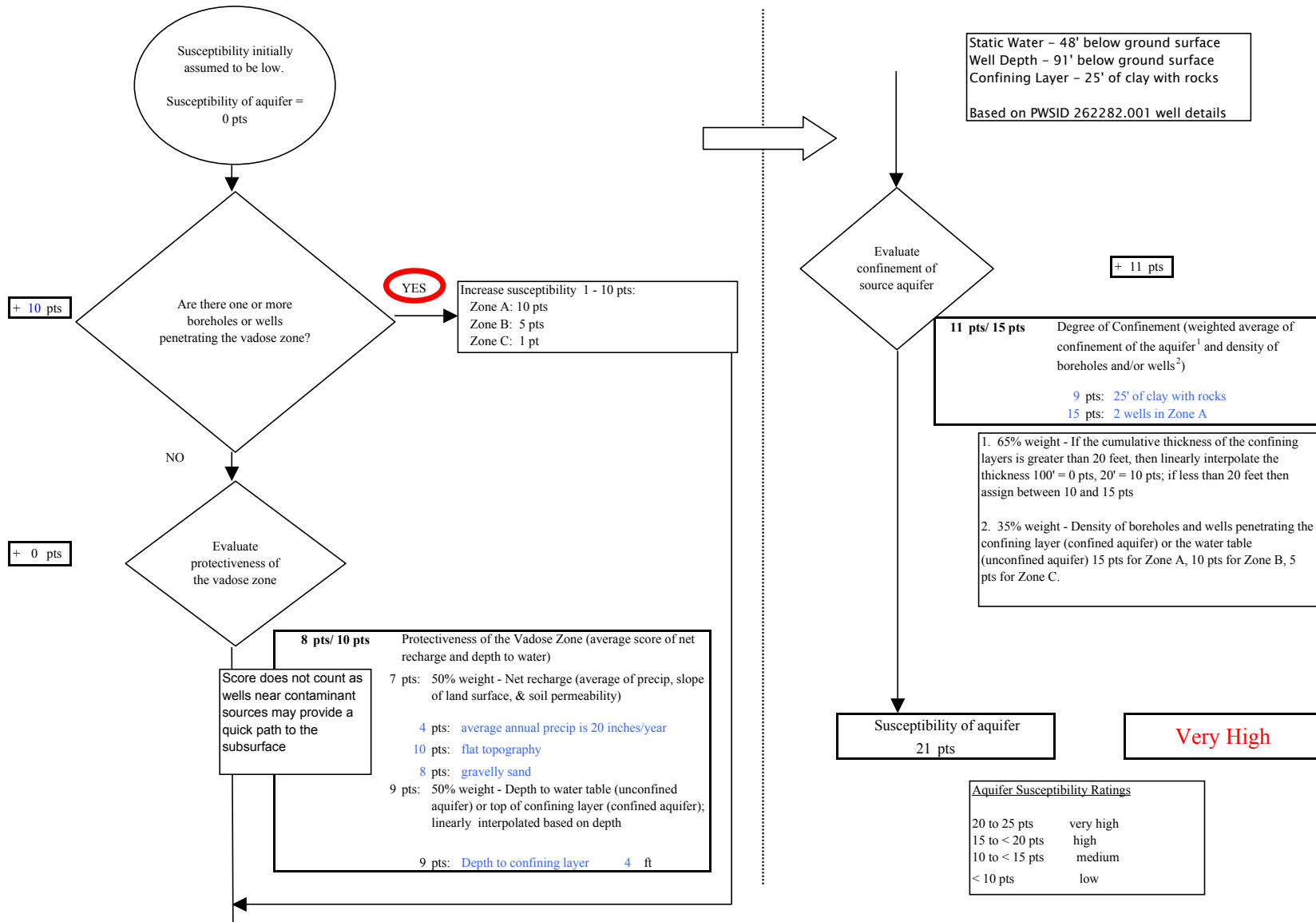


Chart 3. Contaminant risks for Inlet Fisheries, Inc. - Naknek (PWS No. 262282.002) - Bacteria & Viruses

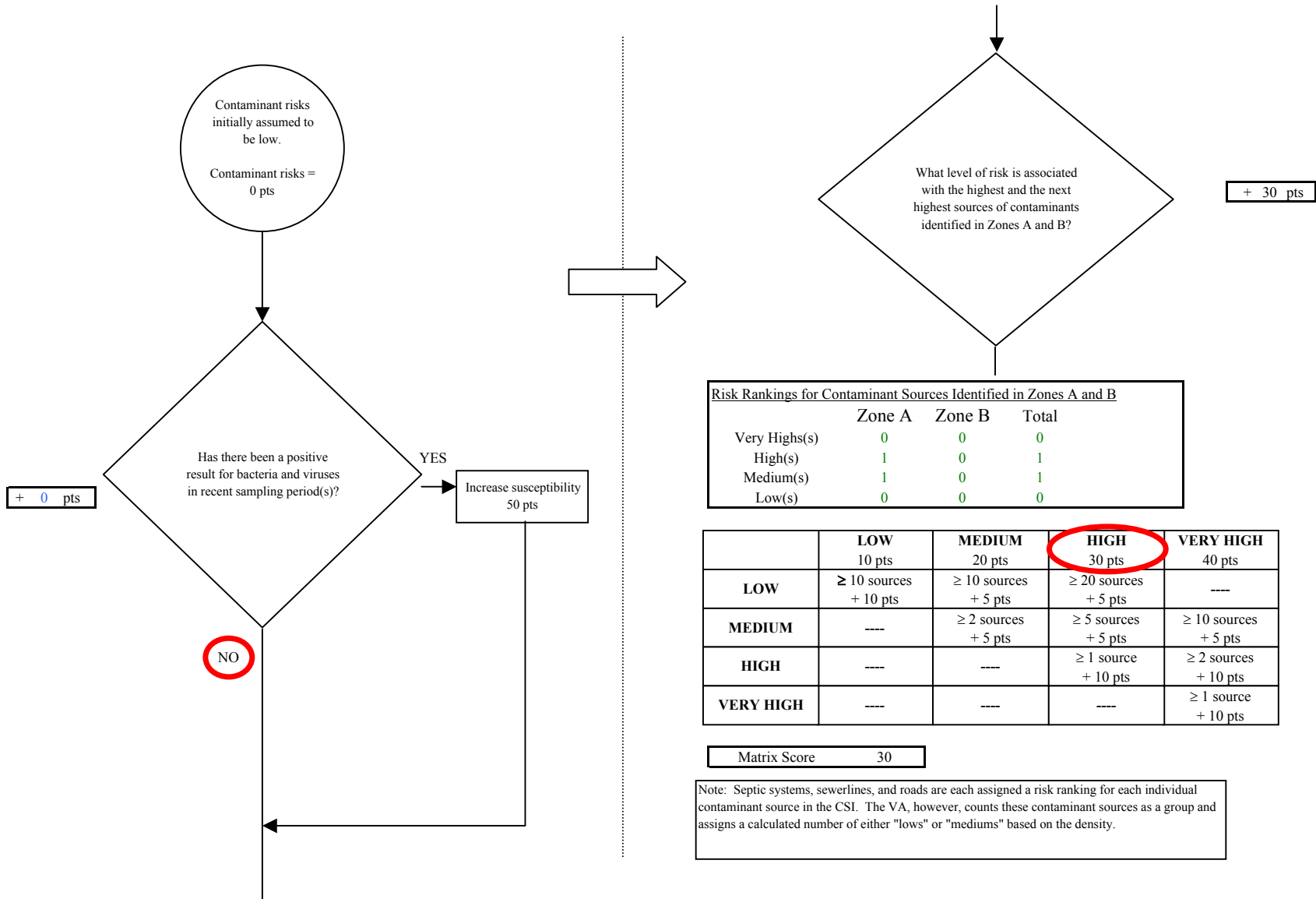
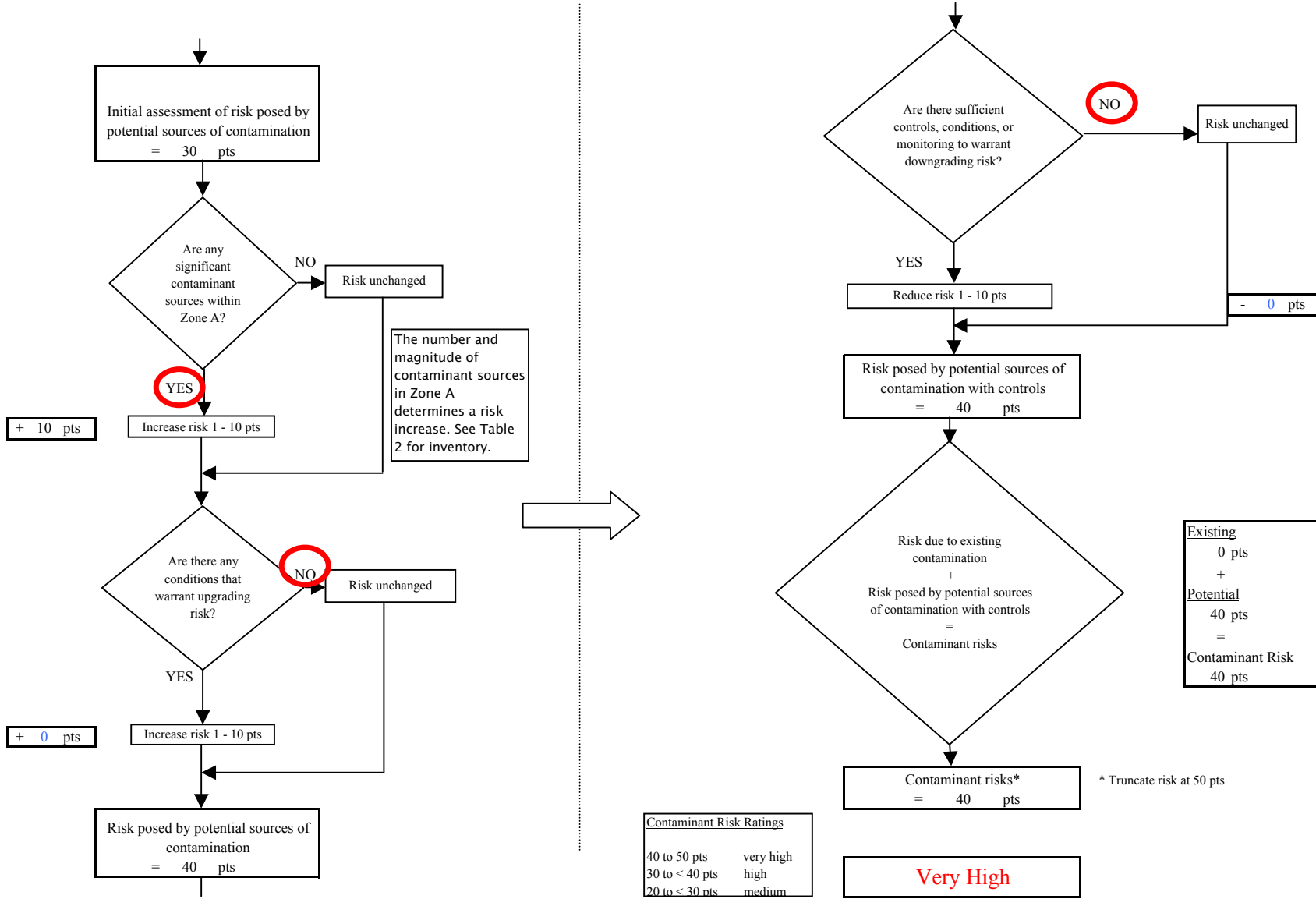


Chart 3. Contaminant risks for Inlet Fisheries, Inc. - Naknek (PWS No. 262282.002) - Bacteria & Viruses



Contaminant Risk Ratings	
40 to 50 pts	very high
30 to < 40 pts	high
20 to < 30 pts	medium

Existing	0 pts
+	
Potential	40 pts
=	
Contaminant Risk	40 pts

Chart 4. Vulnerability analysis for Inlet Fisheries, Inc. - Naknek (PWS No. 262282.002) - Bacteria & Viruses

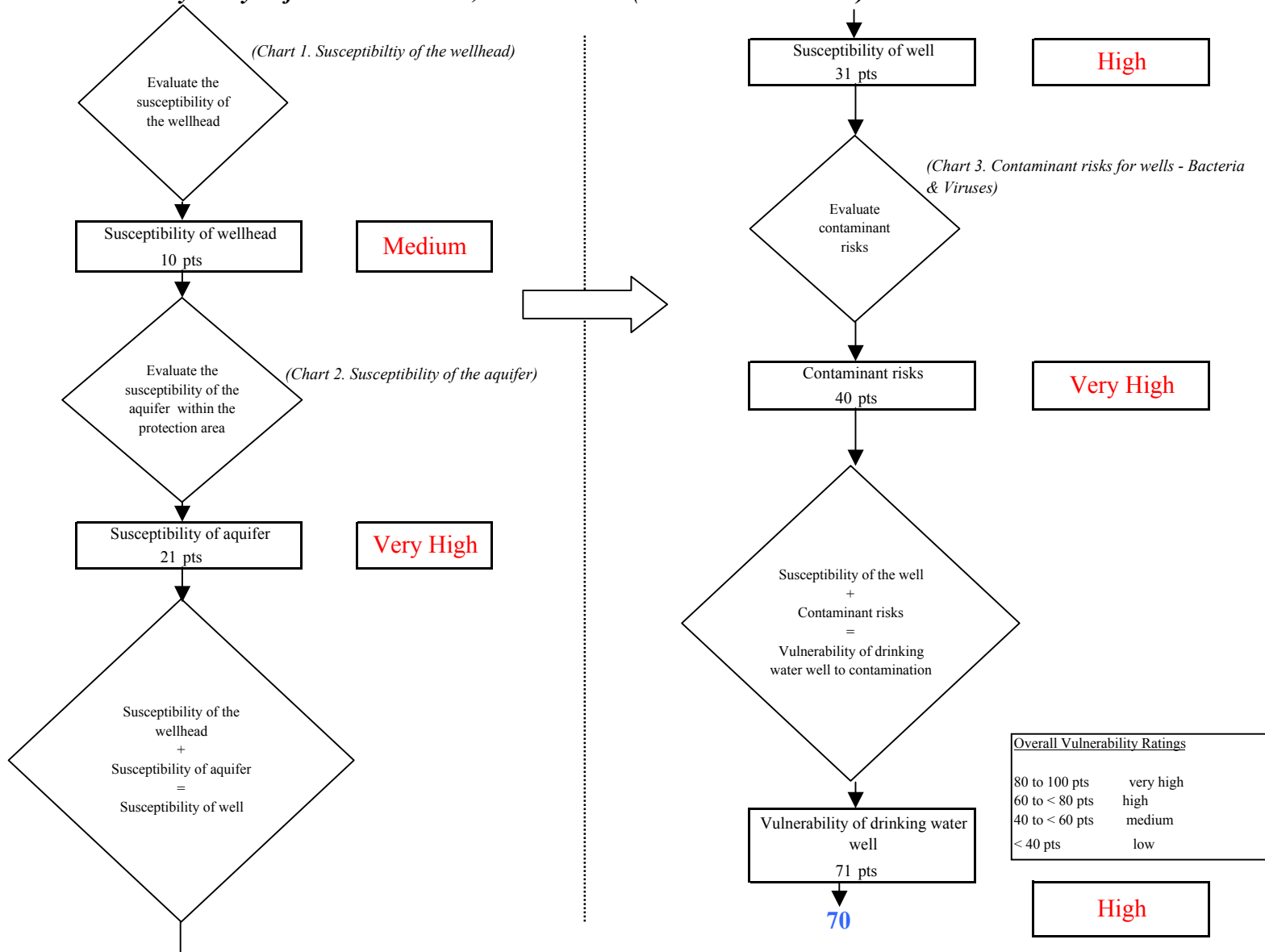


Chart 5. Contaminant risks for Inlet Fisheries, Inc. - Naknek (PWS No. 262282.002) - Nitrates and Nitrites

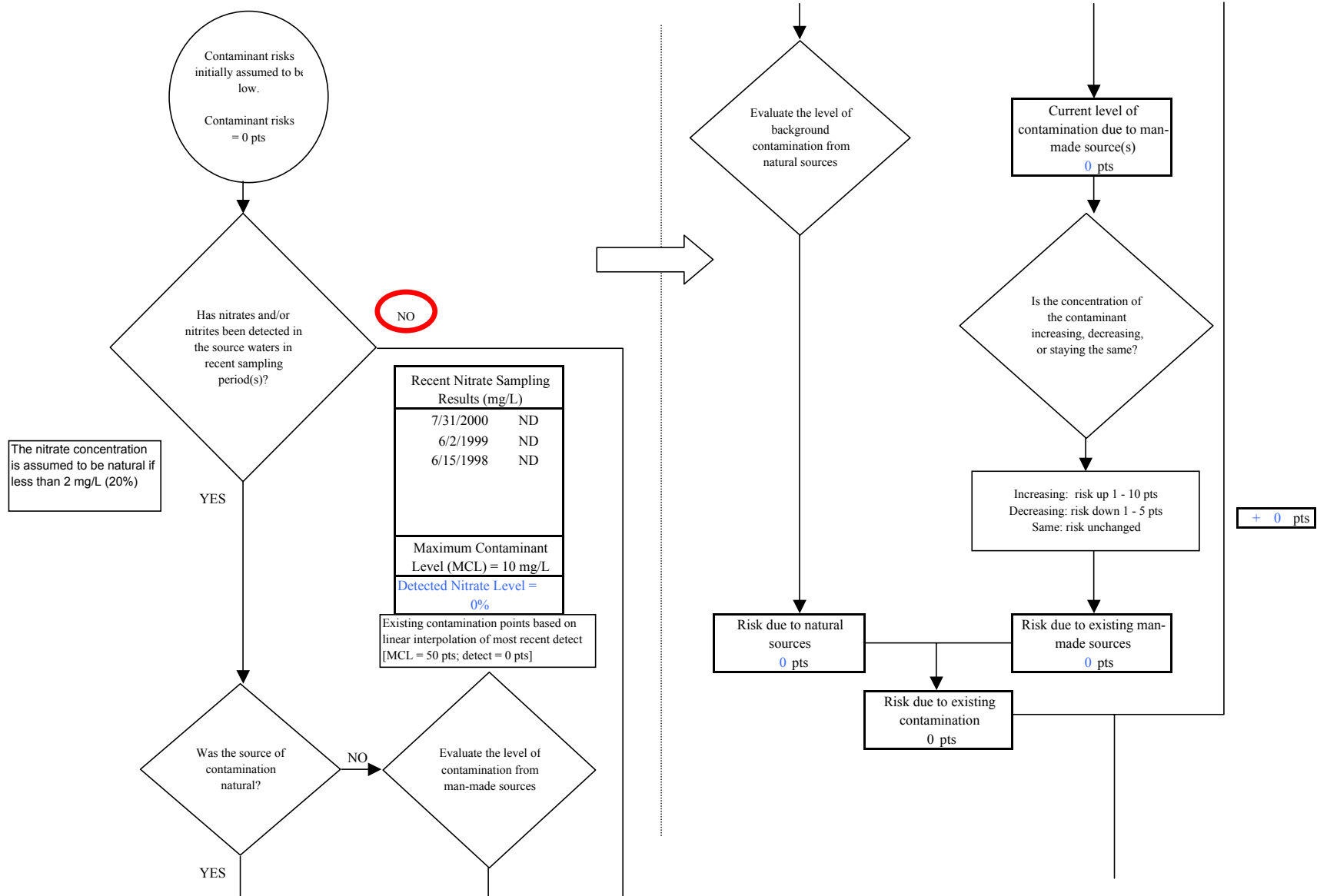


Chart 5. Contaminant risks for Inlet Fisheries, Inc. - Naknek (PWS No. 262282.002) - Nitrates and Nitrites

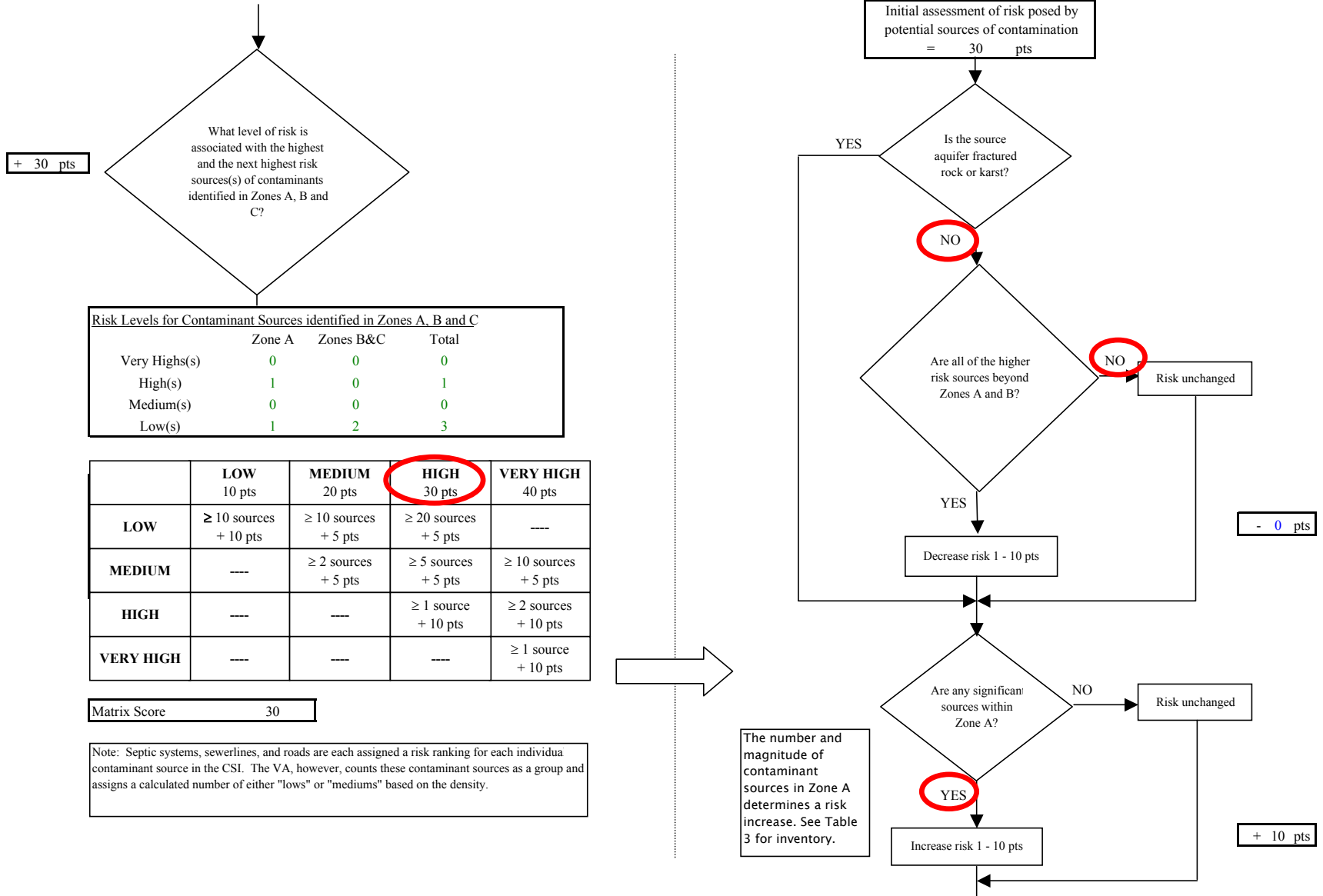


Chart 5. Contaminant risks for Inlet Fisheries, Inc. - Naknek (PWS No. 262282.002) - Nitrates and Nitrites

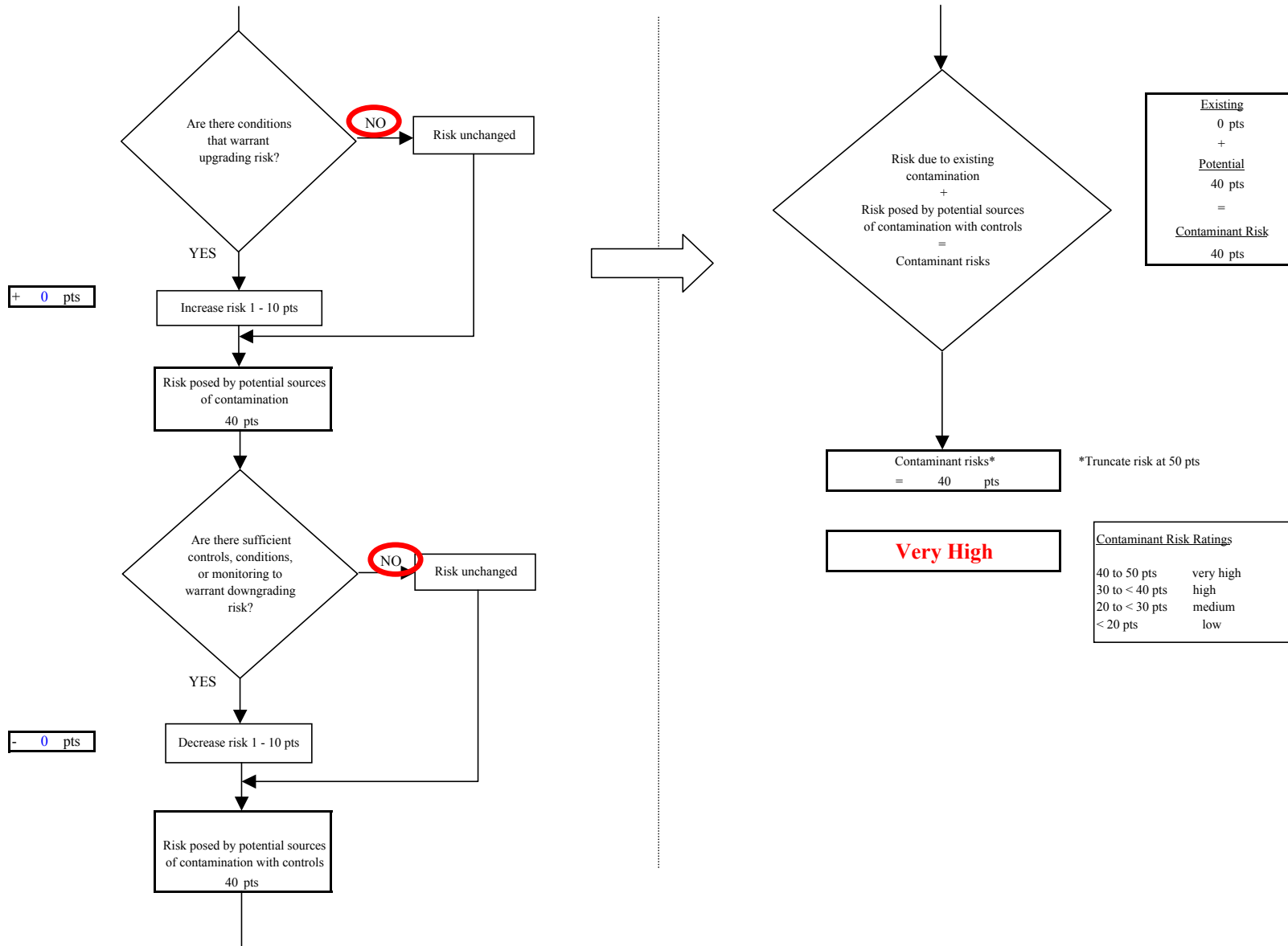


Chart 6. Vulnerability analysis for Inlet Fisheries, Inc. - Naknek (PWS No. 262282.002) - Nitrates and Nitrites

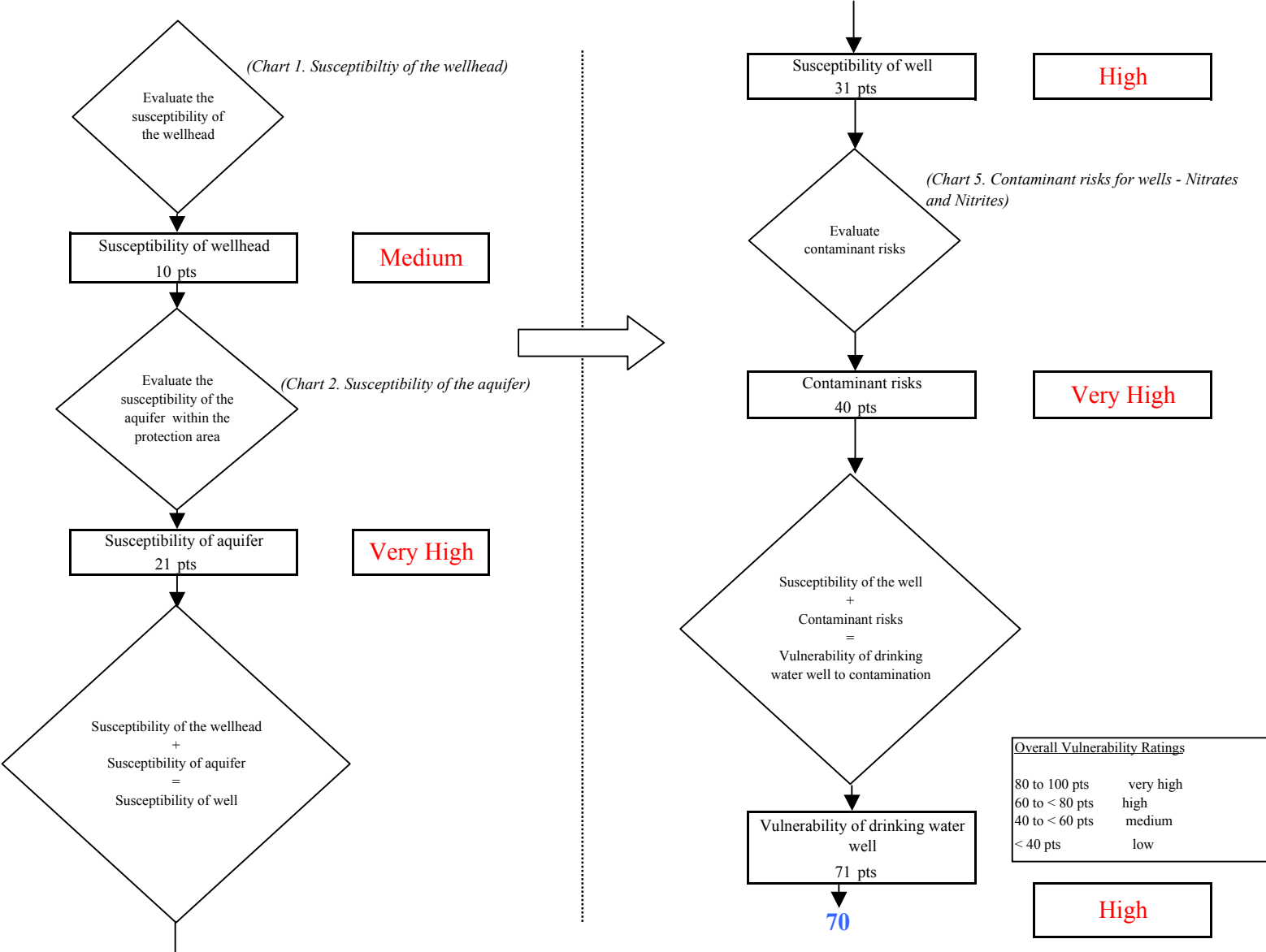


Chart 7. Contaminant risks for Inlet Fisheries, Inc. - Naknek (PWS No. 262282.002) - Volatile Organic Chemicals

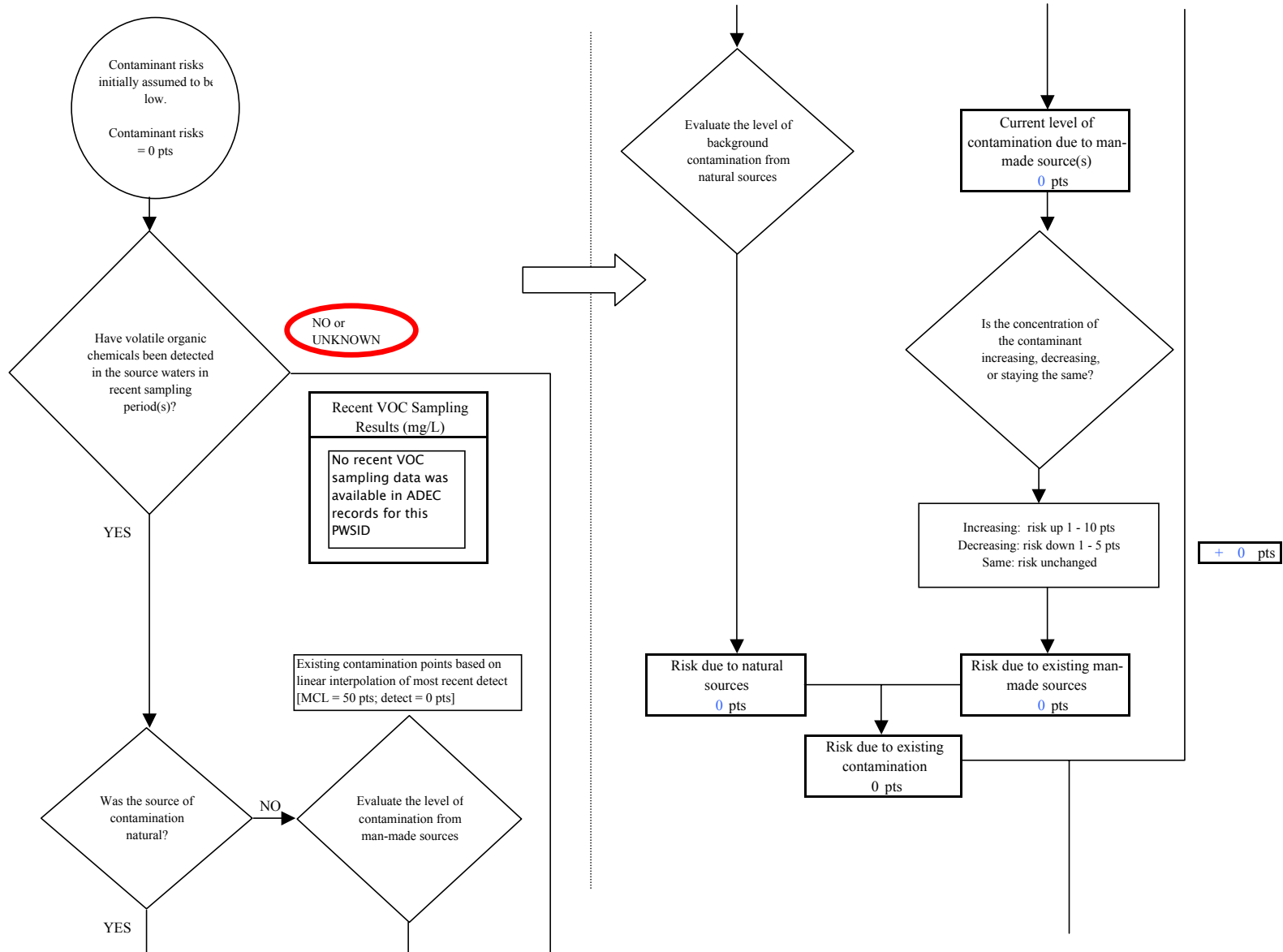


Chart 7. Contaminant risks for Inlet Fisheries, Inc. - Naknek (PWS No. 262282.002) - Volatile Organic Chemicals

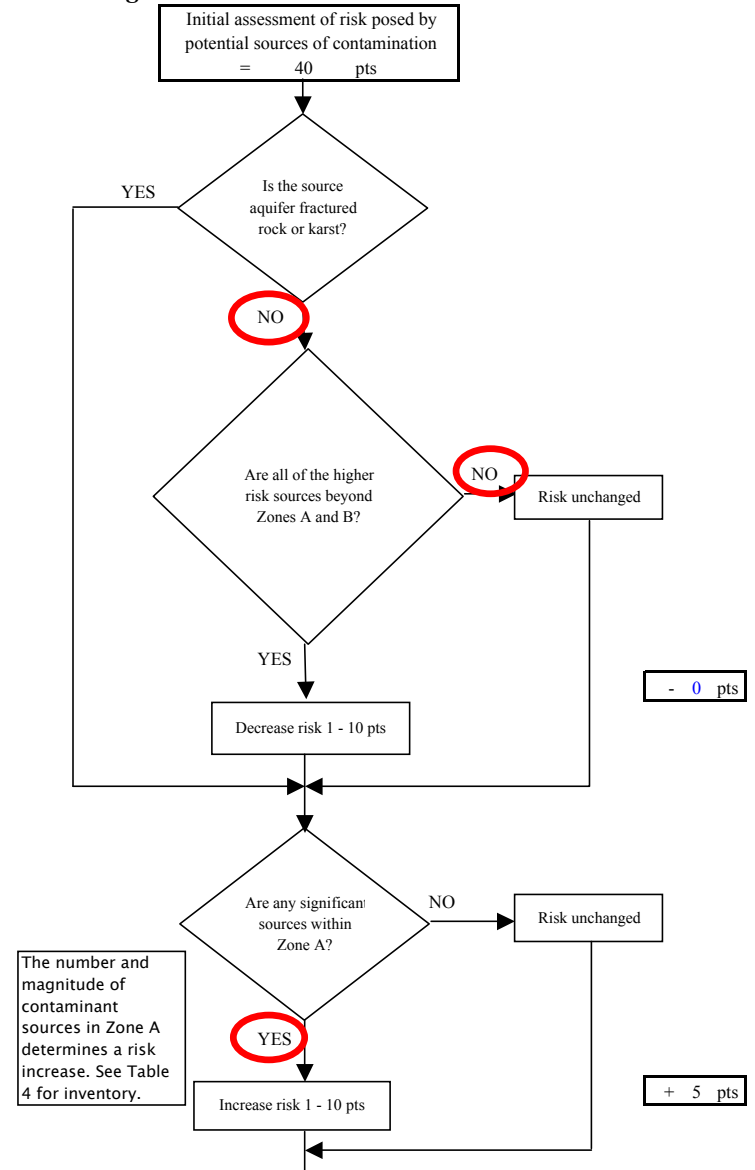
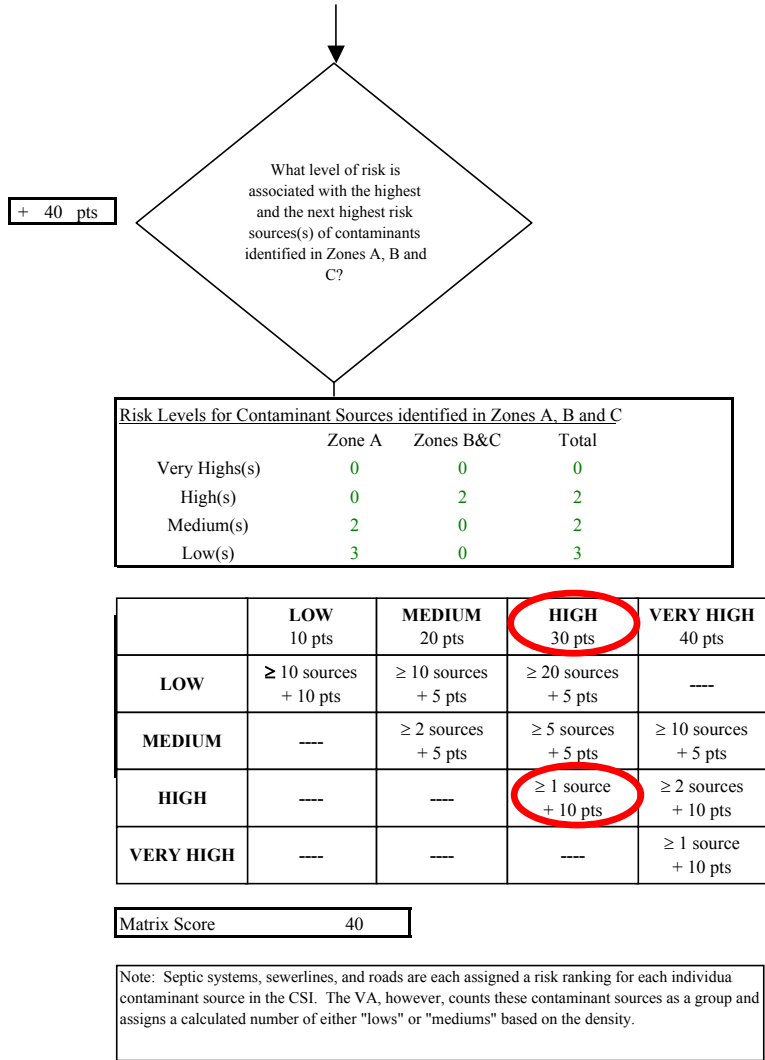


Chart 7. Contaminant risks for Inlet Fisheries, Inc. - Naknek (PWS No. 262282.002) - Volatile Organic Chemicals

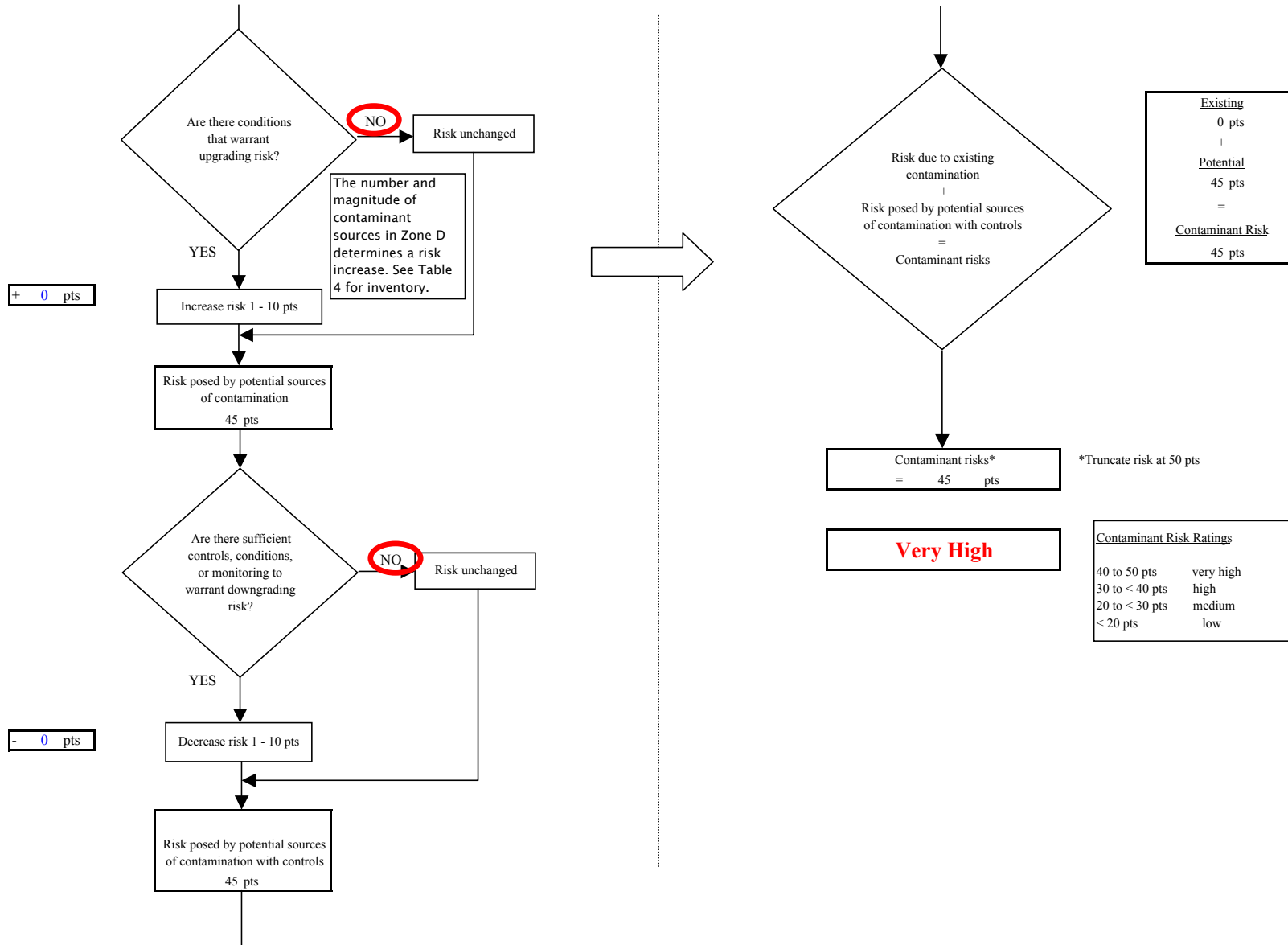


Chart 8. Vulnerability analysis for Inlet Fisheries, Inc. - Naknek (PWS No. 262282.002) - Volatile Organic Chemicals

