



Source Water Assessment

A Hydrogeologic Susceptibility and
Vulnerability Assessment for
Lime Village Watering Point
Drinking Water System,
Lime Village, Alaska

PWSID # 280244.001

April 2004

DRINKING WATER PROTECTION PROGRAM REPORT 1154
Alaska Department of Environmental Conservation

Source Water Assessment for Lime Village Watering Point Drinking Water System Lime Village, Alaska

PWSID # 280244.001

DRINKING WATER PROTECTION PROGRAM REPORT 1154

The Drinking Water Protection Program (DWPP) is producing Source Water Assessments in compliance with the Safe Drinking Water Act Amendments of 1996. Each assessment includes a delineation of the source water area, an inventory of potential and existing contaminant sources that may impact the water, a risk ranking for each of these contaminants, and an evaluation of the potential vulnerability of these drinking water sources.

These assessments are intended to provide public water systems owners/operators, communities, and local governments with the best available information that may be used to protect the quality of their drinking water. The assessments combine information obtained from various sources, including the U.S. Environmental Protection Agency, Alaska Department of Environmental Conservation (ADEC), public water system owners/operators, and other public information sources. The results of this assessment are subject to change if additional data becomes available. It is anticipated this assessment will be updated every five years to reflect any changes in the vulnerability and/or susceptibility of public drinking water source. If you have any additional information that may affect the results of this assessment, please contact the Program Coordinator of DWPP, (907) 269-7521.

CONTENTS

EXECUTIVE SUMMARY.....	1	INVENTORY OF POTENTIAL AND EXISTING	
PUBLIC DRINKING WATER SYSTEM	1	CONTAMINANT SOURCES	2
DRINKING WATER PROTECTION AREA.....	2	RANKING OF CONTAMINANT RISKS	2
		VULNERABILITY OF DRINKING WATER	
		SYSTEM	3

TABLES

Table 1. Definition of Zones	2
Table 2. Susceptibility	3
Table 3. Contaminant Risks	4
Table 4. Overall Vulnerability.....	4

APPENDICES

APPENDIX	A. Lime Village Watering Point Drinking Water Protection Area (Map A)
	B. Contaminant Source Inventory for Lime Village Watering Point (Table 1) Contaminant Source Inventory and Risk Ranking for Lime Village Watering Point – Bacteria and Viruses (Table 2) Contaminant Source Inventory and Risk Ranking for Lime Village Watering Point – Nitrates/Nitrites (Table 3) Contaminant Source Inventory and Risk Ranking for Lime Village Watering Point – Volatile Organic Chemicals (Table 4) Contaminant Source Inventory and Risk Ranking for Lime Village Watering Point – Heavy Metals, Cyanide and Other Inorganic Chemicals (Table 5) Contaminant Source Inventory and Risk Ranking for Lime Village Watering Point – Synthetic Organic Chemicals (Table 6) Contaminant Source Inventory and Risk Ranking for Lime Village Watering Point – Other Organic Chemicals (Table 7)
	C. Lime Village Watering Point Drinking Water Protection Area and Potential and Existing Contaminant Sources (Map C)
	D. Vulnerability Analysis for Contaminant Source Inventory and Risk Ranking for Lime Village Watering Point Public Drinking Water Source (Charts 1 – 14)

Source Water Assessment for Lime Village Watering Point Source of Public Drinking Water, Lime Village, Alaska

Drinking Water Protection Program Alaska Department of Environmental Conservation

EXECUTIVE SUMMARY

The Lime Village Watering Point has one Public Water System (PWS) well. The well (PWS No. 280244.001) has been used as a drinking water source since it was drilled in 1987.

The well is a Class A (community and non-transient non-community) water system located approximately 100 feet southwest of the Stony River in Lime Village, Alaska. Sanitary survey records were not available through ADEC; therefore, it is unknown if there is secondary storage of the drinking water, or if the drinking water source is untreated, and derived directly from the wellhead, or treated. It is assumed that this system operates year round and serves approximately 57 residents through one service connection. The wellhead received a susceptibility rating of **Very High** and the aquifer received a susceptibility rating of **High**. Combining these two ratings produce a **High** rating for the natural susceptibility of the well.

Identified potential and current sources of contaminants for the public drinking water source include: a large capacity septic system, nonresidential pit toilets, landfills, aboveground fuel tanks, cemeteries, petroleum product bulk stations/terminals, roads, electric power generation, and a medical/veterinary facility. These identified potential and existing sources of contamination are considered as sources of bacteria and viruses, nitrates and/or nitrites, volatile organic chemicals, heavy metals, cyanide and other inorganic chemicals, synthetic organic chemicals, and other organic chemicals contaminant categories.

Overall, the water well received a vulnerability rating of **Very High** for the bacteria and viruses, nitrates and nitrites, volatile organic chemicals, synthetic organic chemicals, and other organic chemicals, and a vulnerability rating of **High** for heavy metals, cyanide and other inorganic chemicals contaminant categories.

PUBLIC DRINKING WATER SYSTEM

The Lime Village Watering Point well is a Class A (community/non-transient/non-community) public water system. The system is located approximately 100 feet southwest of the Stony River in Lime Village, Alaska (Sec. 30, T15N, R34W, Seward Meridian; see Map A of Appendix A). Lime Village is located on the south bank of the Stony River, about 50 miles southeast of its junction with the Kuskokwim River. The village is 111 air miles south of McGrath, 137 miles east of Aniak, and 185 miles west of Anchorage. The community has a population of 43 (ADCED, 2003). Average annual precipitation in Lime Village is 22 inches, with 85 inches of snowfall. Temperatures range between -47 and 82°F.

The community of Lime Village obtains most of their water supply from a community well and water that is drawn from the Stony River. Sewage is disposed of in pit privies (ADCED, 2003). Lime Village receives electrical power from the Lime Village Power System. Power generating facilities are fueled by a solar-diesel hybrid. Refuse is collected by individuals and transported to the landfill (ADCED, 2003).

According to information supplied by the ANTHC for the Lime Village Watering Point PWS, the depth of the primary water well is 35 feet below the ground surface. The well is in an unconfined aquifer, based on available well construction details. It is unknown if the well is screened. The well is located within a floodplain.

A sanitary survey for the public water system was not available; therefore, it is unknown if the land surface was sloped away from the well. Generally, land surfaces that slope away from the wellhead promote surface water drainage, which reduces the potential of contaminant migration down the well casing annulus. Well construction details indicate that the well is grouted according to ADEC regulations. Proper grouting provides added protection against contaminants traveling along the well casing annulus and into source waters.

Lime Village is located in the Nushagak-Big River Hills physiographic division of Alaska, which is characterized by highlands with rolling topography, gentle slopes, and low mountains. The area underwent multiple glaciations and a majority of the observed surficial deposits are related to these glaciations. Exposures reveal glaciofluvial and ground moraine sediments that are overlain by fine-grained deposits of fluvial and/or eolian origin. Surficial soils in the area are generally comprised of silty sand overlying cobbly, sandy gravel. Permafrost is discontinuous in the Lime Village area (SOA DOT, 1976).

DRINKING WATER PROTECTION AREA

In order to evaluate whether a drinking water source is at risk, we must first evaluate what are the most likely pathways for surface contamination to reach the groundwater. These areas are determined by looking at the characteristics of the soil, groundwater, aquifer, and well.

The most probable area for contamination to reach the drinking water well is the area that contributes water to the well, the groundwater recharge area. This area is designated as the drinking water protection area (DWPA). Because releases of contaminants within the protection area are most likely to impact the drinking water well, this area will serve as the focus for voluntary protection efforts. An analytical calculation was used to determine the size and shape of the DWPA for the Lime Village Watering Point PWS. The input parameters describing the attributes of the aquifer in this calculation were adopted from Groundwater (Freeze and Cherry, 1979). Available geology and groundwater contours were also considered to take into account any uncertainties in groundwater flow and aquifer characteristics to arrive at a meaningful protection area.

The protection areas established for wells by the ADEC are usually separated into four zones, limited by the watershed. These zones correspond to differences in the time-of-travel (TOT) of the water moving through the aquifer to the well (Please refer to the Guidance Manual for Class A Public Water Systems for additional information).

The time of travel for contaminants within the water varies and is dependent on the physical and chemical characteristics of each contaminant. The following is a summary of the four protection area zones for wells and the calculated time -of-travel for each:

Table 1. Definition of Zones

Zone	Definition
A	¼ the distance for the 2-yr. time -of-travel
B	Less than the 2 year time-of-travel
C	Less Than the 5 year time -of-travel
D	Less than the 10 year time -of-travel

The DWPA for the Lime Village Watering Point PWS was determined using an analytical calculation and includes Zones A, B, C, and D (See Map A of Appendix A).

INVENTORY OF POTENTIAL AND EXISTING CONTAMINANT SOURCES

The Drinking Water Protection Program has completed an inventory of potential and existing sources of contamination within the Lime Village Watering Point DWPA. This inventory was completed through a search of agency records and other publicly available information. Potential sources of contamination to the drinking water aquifer include a wide range of categories and types. Potential drinking water contaminants are found within agricultural, residential, commercial, and industrial areas, but can also occur within areas that have little or no development.

For the basis of all Class A public water system assessments, six categories of drinking water contaminants were inventoried. They include:

- Bacteria and viruses,
- Nitrates and/or nitrites,
- Volatile organic chemicals,
- Heavy metals, cyanide and other inorganic chemicals,
- Synthetic organic chemicals,
- Other organic chemicals.

The sources are displayed on Map C of Appendix C and summarized in Table 1 of Appendix B.

RANKING OF CONTAMINANT RISKS

Once the potential and existing sources of contamination have been identified, they are assigned a ranking according to what type and level of risk they represent. Ranking of contaminant risks for a “potential” or “existing” source of contamination is a function of toxicity and volumes of specific contaminants associated with that source. Rankings include:

- Low,
- Medium,
- High, and
- Very High.

The time-of-travel for contaminants within the water varies and is dependent on the physical and chemical characteristics of each contaminant. Bacteria and Viruses are only inventoried in Zones A and B because of their short life span. Only “Very High” and “High” rankings are inventoried within the outer Zone D due to the probability of contaminant dilution by the time the contaminants get to the well. Tables 2 through 4 in Appendix B contain the ranking of potential and existing sources of contamination with respect to bacteria and viruses, nitrates and/or nitrites, volatile organic chemicals, heavy metals, cyanide and other inorganic chemicals, synthetic organic chemicals, and other organic chemicals.

VULNERABILITY OF THE DRINKING WATER SYSTEM

Vulnerability of a drinking water source to contamination is a combination of two factors:

- Natural susceptibility, and
- Contaminant risks.

Appendix D contains fourteen charts, which together form the ‘Vulnerability Analysis’ for a source water assessment for a public drinking water source. Chart 1 analyzes the ‘Susceptibility of the Wellhead’ to contamination by looking at the construction of the well and its surrounding area. Chart 2 analyzes the ‘Susceptibility of the Aquifer’ to contamination by looking at the naturally occurring attributes of the water source and influences on the groundwater system that might lead to contamination. Chart 3 analyzes ‘Contaminant Risks’ for the drinking water source with respect to bacteria and viruses. The ‘Contaminant Risks’ portion of the analysis considers potential sources of contaminants as well as a review of contamination that has or may have occurred, but has not arrived or been detected at the well. Chart 4 contains the ‘Vulnerability Analysis for Bacteria and Viruses’. Charts 5 through 14 contain the Contaminant Risks and Vulnerability Analyses for nitrates and nitrites, volatile organic chemicals, heavy metals, cyanide and other inorganic chemicals, synthetic organic chemicals, and other organic chemicals, respectively.

A score for the Natural Susceptibility is reached by considering the properties of the well and the aquifer.

Susceptibility of the Wellhead (0 – 25 Points)
(Chart 1 of Appendix D)

+

Susceptibility of the Aquifer (0 – 25 Points)
(Chart 2 of Appendix D)

=

Natural Susceptibility (Susceptibility of the Well)
(0 – 50 Points)

A ranking is assigned for the Natural Susceptibility according to the point score:

Natural Susceptibility Ratings	
40 to 50 pts	Very High
30 to < 40 pts	High
20 to < 30 pts	Medium
< 20 pts	Low

The Lime Village Watering Point’s water well is in an unconfined aquifer. Unconfined aquifers are more susceptible to potential groundwater quality impacts posed by the migration of surface water contaminants downward from the surface. Table 2 shows the susceptibility scores and ratings for this PWS.

Table 2. Susceptibility

	Score	Rating
Susceptibility of the Wellhead	20	Very High
Susceptibility of the Aquifer	18	High
Natural Susceptibility	38	High

Contaminant risks to a drinking water source depend on the type, number or density, and distribution of contaminant sources. This score has been derived from an examination of existing and historical contamination that has been detected at the drinking water source through routine sampling. It also evaluates potential sources of contamination. Flow charts are used to assign a point score, and ratings are assigned in the same way as for the natural susceptibility:

Contaminant Risk Ratings	
40 to 50 pts	Very High
30 to < 40 pts	High
20 to < 30 pts	Medium
< 20 pts	Low

Table 3 summarizes the Contaminant Risks for each category of drinking water contaminants.

Table 3. Contaminant Risks

Category	Score	Rating
Bacteria and Viruses	50	Very High
Nitrates and/or Nitrites	50	Very High
Volatile Organic Chemicals	50	Very High
Heavy Metals, Cyanide and		
Other Inorganic Chemicals	40	Very High
Synthetic Organic Chemicals	50	Very High
Other Organic Chemicals	50	Very High

Finally, an overall vulnerability score is assigned for each water system by combining each of the contaminant risk scores with the natural susceptibility score:

$$\begin{array}{r}
 \text{Natural Susceptibility (0 – 50 points)} \\
 + \\
 \text{Contaminant Risks (0 – 50 points)} \\
 = \\
 \text{Vulnerability of the} \\
 \text{Drinking Water Source to Contamination (0 – 100).}
 \end{array}$$

Again, rankings are assigned according to a point score:

Overall Vulnerability Ratings	
80 to 100 pts	Very High
60 to < 80 pts	High
40 to < 60 pts	Medium
< 40 pts	Low

Table 4 contains the overall vulnerability scores (0–100) and ratings for each of the six categories of drinking water contaminants. Note: scores are rounded off to the nearest five.

Table 4. Overall Vulnerability

Category	Score	Rating
Bacteria and Viruses	90	Very High
Nitrates and Nitrites	90	Very High
Volatile Organic Chemicals	90	Very High
Heavy Metals, Cyanide and		
Other Inorganic Chemicals	75	High
Synthetic Organic Chemicals	90	Very High

Other Organic Chemicals 90 Very High

Bacteria and Viruses

The contaminant risk for bacteria and viruses is **Very High**. The risk is primarily attributed to the presence of a landfill and a large capacity septic system in Zone A (see Table 2 – Appendix B).

No positive bacteria counts have been reported in recent (within five years) sampling events (See Chart 3 – Contaminant Risks for Bacteria and Viruses in Appendix D). Only a small amount of bacteria and viruses are required to endanger public health.

After combining the contaminant risk for bacteria and viruses with the natural susceptibility of the well, the overall vulnerability of the well to contamination is **Very High**.

Nitrates and Nitrites

The contaminant risk for nitrates and nitrites is **Very High**. The risk to this source of public drinking water is primarily attributed to the presence of a landfill and a large capacity septic system in Zone A (see Table 3 – Appendix B).

Nitrates are very mobile, moving at approximately the same rate as water. The sampling history for this well indicates that low levels of nitrates have been detected in recent sampling events. However, the reported concentrations of nitrates do not exceed the maximum contaminant level (MCL) of 10 mg/L. Nitrate concentrations in uncontaminated groundwater are typically less than 2 mg/L; therefore, nitrate concentrations above 2 mg/L may be indicative of man-made sources (See Chart 5 - Contaminant Risks for Nitrates and/or Nitrites in Appendix D).

Nitrate levels are often derived from the decomposition of organic matter in soils. Although the nitrate source is unknown, such occurrences may be attributed to septic systems or other sources. After combining the contaminant risk for nitrates and nitrites with the natural susceptibility of the well, the overall vulnerability of the well to nitrate and nitrite contamination is **Very High**.

Volatile Organic Chemicals

The contaminant risk for volatile organic chemicals is **Very High**. The risk is primarily attributed to the presence of a landfill and petroleum product bulk station/terminals located in Zone A. Numerous other potential contaminant sources are also found within the protection area (see Table 4 – Appendix B).

All recent sampling data for VOCs were below detection levels for the Lime Village Watering Point (See Chart 7 – Contaminant Risks for Volatile Organic Chemicals in Appendix D).

After combining the contaminant risk for volatile organic chemicals with the natural susceptibility of the well, the overall vulnerability of the well to contamination is **Very High**.

Heavy Metals, Cyanide and Other Inorganic Chemicals

The contaminant risk for heavy metals, cyanide and other inorganic chemicals is **Very High**. The risk is primarily attributed to the presence of a landfill in Zone A. Numerous other potential contaminant sources are also found within the protection area (see Table 5 – Appendix B).

Based on review of recent sampling records for this public water system, low levels of barium have been detected, but have not exceeded the MCL of 2.0 mg/L (see Chart 9 – Contaminant Risks for Heavy Metals, Cyanide, and Other Inorganic Chemicals in Appendix D).

After combining the contaminant risk for heavy metals, cyanide and other inorganic chemicals with the natural susceptibility of the well, the overall vulnerability of the well to contamination is **High**.

Synthetic Organic Chemicals

The contaminant risk for synthetic organic chemicals is **Very High**. The risk is primarily attributed to the presence of a landfill in Zone A. Numerous other potential contaminant sources are also found within the protection area (see Table 6 – Appendix B).

No recent sampling data was available in ADEC records for the Lime Village Watering Point (See Chart 11 – Contaminant Risks for Synthetic Organic Chemicals in Appendix D).

After combining the contaminant risk for synthetic organic chemicals with the natural susceptibility of the well, the overall vulnerability of the well to contamination is **Very High**.

Other Organic Chemicals

The contaminant risk for other organic chemicals is **Very High**. The risk is primarily attributed to the presence of petroleum product bulk station/terminals, electric power generation, and a landfill in Zone A. Numerous other potential contaminant sources are

also found within the protection area (see Table 7 – Appendix B).

No recent sampling data was available in ADEC records for the Lime Village Watering Point (See Chart 13 – Contaminant Risks for Other Organic Chemicals in Appendix D).

After combining the contaminant risk for other organic chemicals with the natural susceptibility of the well, the overall vulnerability of the well to contamination is **Very High**.

Using the Source Water Assessment

This assessment of contaminant risks can be used as a foundation for local voluntary protection efforts as well as a basis for the continuous efforts on the part of the community of Lime Village to protect public health. It is anticipated that Source Water Assessments will be updated every five years to reflect any changes in the vulnerability and/or susceptibility of the drinking water source.

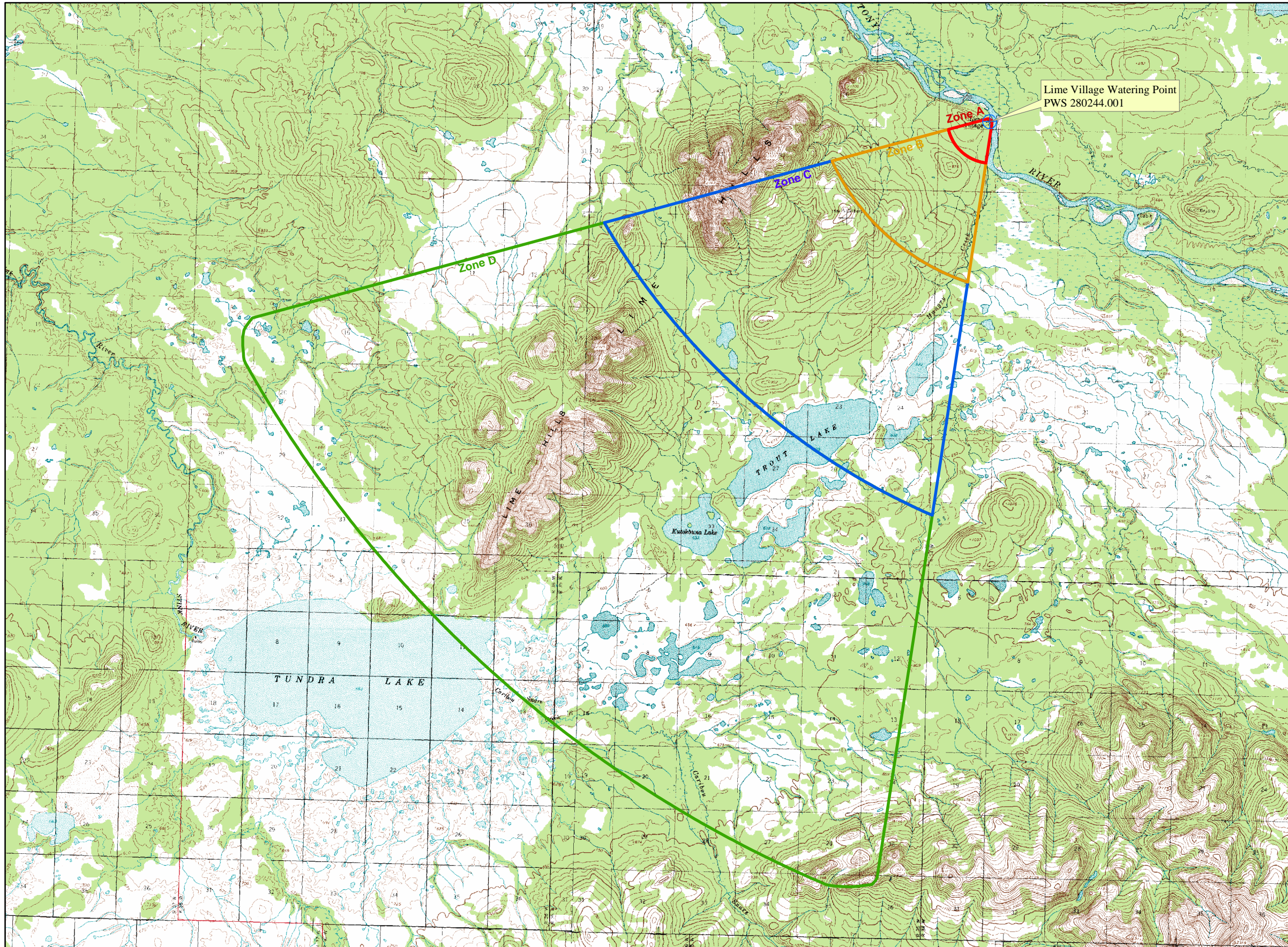
REFERENCES

- Alaska Department of Community and Economic Development (ADCED), 2003 [WWW document]. URL: http://www.dced.state.ak.us/cbd/commdb/CF_COMDB.htm
- Alaska Department of Environmental Conservation, Contaminated Sites Database, 2003 [WWW database], URL http://www.state.ak.us/dec/dspar/csites/cs_search.htm
- Alaska Department of Environmental Conservation, Leaking Underground Storage Tank Database, 2003 [WWW database], URL http://www.dec.state.ak.us/spar/stp/ust/search/fac_search.asp
- Freeze, R. A., and Cherry, J.A. 1979, Groundwater, Prentice-Hall, Englewood Cliffs, New Jersey
- State of Alaska, Department of Transportation (SOA DOT). 1976, Engineering Geology and Soils Report, Lime Village Runway and Materials Investigation.
- United States Environmental Protection Agency (EPA), 2002 [WWW document]. URL <http://www.epa.gov/safewater/mcl.html>.

APPENDIX A

Drinking Water Protection Area Location Map (Map A)

Public Water Well System for PWS #280244.001 Lime Village Watering Point



LEGEND

Public Water System Well

Hydrography/Physical

- Parcels
- Stream
- Lake or Pond
- Contours

Transportation

- Primary Route (Class 1)
- Secondary Route (Class 2)
- Road (Class 3)
- Road (Class 4)
- Road (Class 5, Four-wheel drive)

Groundwater Protection Zones

- Zone A Protection Area- Several Months Travel Time
- Zone B Protection Area- 2 Years Travel Time
- Zone C Protection Area- 5 Years Travel Time
- Zone D Protection Area- 10 Years Travel Time

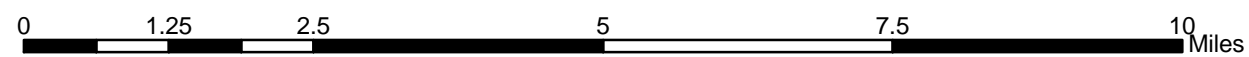
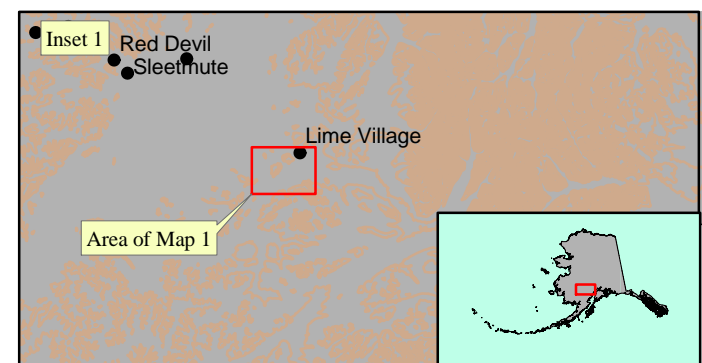
Data Sources:
Contaminant Sources, Public Water System Wells, Contours
Alaska Department of Environmental Conservation (ADEC)

Critical Facilities, Federal Emergency Management Agency (FEMA)

All other data:
United States Geological Survey (USGS)

Drinking Water Protection Areas based on "Alaska Drinking Water Protection Program - Guidance Manual for Class A Public Water Systems" published by ADEC

URS Corporation does not guarantee the accuracy or validity of the data provided.



Lime Village Watering Point
PWS 280244.001

Appendix A Map A

APPENDIX B

Contaminant Source Inventory and Risk Ranking (Tables 1-7)

Table 1

**Contaminant Source Inventory for
Lime Village Watering Point**

PWSID 280244.001

Contaminant Source Type	Contaminant Source ID	CS ID tag	Zone	Map Number	Comments
Injection wells (Class V) Large-Capacity Septic System (Drainfield Disposal Method)	D10	D10-01	A	C	School and teachers housing
Pit toilets (open hole), nonresidential (one or more)	D16	D16-01	A	C	Assume 10 or less pit privies located in Zone A
Landfills (municipal; Class III)	D51	D51-01	A	C	
Tanks, heating oil, residential (above ground)	R08	R08-01	A	C	Assume 20 or less residential heating oil tanks in Zone A
Tanks, heating oil, nonresidential (aboveground)	T14	T14-01	A	C	Power Plant
Tanks, heating oil, nonresidential (aboveground)	T14	T14-02	A	C	Clinic
Tanks, heating oil, nonresidential (aboveground)	T14	T14-03	A	C	Teachers Quarters
Tanks, heating oil, nonresidential (aboveground)	T14	T14-04	A	C	Traditional Council Office
Tanks, heating oil, nonresidential (aboveground)	T14	T14-05	A	C	Russian Orthodox Church
Tanks, heating oil, nonresidential (aboveground)	T14	T14-06	A	C	Community Hall
Tanks, heating oil, nonresidential (aboveground)	T14	T14-07	A	C	Satellite
Tanks, heating oil, nonresidential (aboveground)	T14	T14-08	A	C	Satellite
Tanks, heating oil, nonresidential (aboveground)	T14	T14-09	A	C	UUT
Tanks, heating oil, nonresidential (aboveground)	T14	T14-10	A	C	School
Cemeteries	X01	X01-01	A	C	
Petroleum product bulk station/terminals	X11	X11-01	A	C	IASD
Petroleum product bulk station/terminals	X11	X11-02	A	C	Village Council
Petroleum product bulk station/terminals	X11	X11-03	A	C	UUT
Petroleum product bulk station/terminals	X11	X11-04	A	C	Electric Utility
Highways and roads, dirt/gravel	X24	X24-01	A	C	Assume 1-20 roads in Zone A
Electric power generation (fossil fuels)	X36	X36-01	A	C	
Medical/veterinary facilities (doctor or dentist offices, hospitals, nursing homes)	X40	X40-01	A	C	

*Contaminant Source Inventory and Risk Ranking for
Lime Village Watering Point
Sources of Bacteria and Viruses*

PWSID 280244.001

Table 2

<i>Contaminant Source Type</i>	<i>Contaminant Source ID</i>	<i>CS ID tag</i>	<i>Zone</i>	<i>Risk Ranking for Analysis</i>	<i>Map Number</i>	<i>Comments</i>
Injection wells (Class V) Large-Capacity Septic System (Drainfield Disposal Method)	D10	D10-01	A	High	C	School and teachers housing
Pit toilets (open hole), nonresidential (one or more)	D16	D16-01	A	Medium	C	Assume 10 or less pit privies located in Zone A
Landfills (municipal; Class III)	D51	D51-01	A	High	C	
Highways and roads, dirt/gravel	X24	X24-01	A	Low	C	Assume 1-20 roads in Zone A
Medical/veterinary facilities (doctor or dentist offices, hospitals, nursing homes)	X40	X40-01	A	Medium	C	

Table 3

*Contaminant Source Inventory and Risk Ranking for
Lime Village Watering Point
Sources of Nitrates/Nitrites*

PWSID 280244.001

<i>Contaminant Source Type</i>	<i>Contaminant Source ID</i>	<i>CS ID tag</i>	<i>Zone</i>	<i>Risk Ranking for Analysis</i>	<i>Map Number</i>	<i>Comments</i>
Injection wells (Class V) Large-Capacity Septic System (Drainfield Disposal Method)	D10	D10-01	A	High	C	School and teachers housing
Pit toilets (open hole), nonresidential (one or more)	D16	D16-01	A	Medium	C	Assume 10 or less pit privies located in Zone A
Landfills (municipal; Class III)	D51	D51-01	A	Very High	C	
Cemeteries	X01	X01-01	A	Medium	C	
Highways and roads, dirt/gravel	X24	X24-01	A	Low	C	Assume 1-20 roads in Zone A
Medical/veterinary facilities (doctor or dentist offices, hospitals, nursing homes)	X40	X40-01	A	Low	C	

*Contaminant Source Inventory and Risk Ranking for
Lime Village Watering Point
Sources of Volatile Organic Chemicals*

PWSID 280244.001

Table 4

<i>Contaminant Source Type</i>	<i>Contaminant Source ID</i>	<i>CS ID tag</i>	<i>Zone</i>	<i>Risk Ranking for Analysis</i>	<i>Map Number</i>	<i>Comments</i>
Injection wells (Class V) Large-Capacity Septic System (Drainfield Disposal Method)	D10	D10-01	A	Low	C	School and teachers housing
Pit toilets (open hole), nonresidential (one or more)	D16	D16-01	A	Low	C	Assume 10 or less pit privies located in Zone A
Landfills (municipal; Class III)	D51	D51-01	A	High	C	
Tanks, heating oil, residential (above ground)	R08	R08-01	A	Medium	C	Assume 20 or less residential heating oil tanks in Zone A
Tanks, heating oil, nonresidential (aboveground)	T14	T14-01	A	Low	C	Power Plant
Tanks, heating oil, nonresidential (aboveground)	T14	T14-02	A	Low	C	Clinic
Tanks, heating oil, nonresidential (aboveground)	T14	T14-03	A	Low	C	Teachers Quarters
Tanks, heating oil, nonresidential (aboveground)	T14	T14-04	A	Low	C	Traditional Council Office
Tanks, heating oil, nonresidential (aboveground)	T14	T14-05	A	Low	C	Russian Orthodox Church
Tanks, heating oil, nonresidential (aboveground)	T14	T14-06	A	Low	C	Community Hall
Tanks, heating oil, nonresidential (aboveground)	T14	T14-07	A	Low	C	Satellite
Tanks, heating oil, nonresidential (aboveground)	T14	T14-08	A	Low	C	Satellite
Tanks, heating oil, nonresidential (aboveground)	T14	T14-09	A	Low	C	UUT
Tanks, heating oil, nonresidential (aboveground)	T14	T14-10	A	Low	C	School
Petroleum product bulk station/terminals	X11	X11-01	A	Very High	C	IASD
Petroleum product bulk station/terminals	X11	X11-02	A	Very High	C	Village Council
Petroleum product bulk station/terminals	X11	X11-03	A	Very High	C	UUT
Petroleum product bulk station/terminals	X11	X11-04	A	Very High	C	Electric Utility
Highways and roads, dirt/gravel	X24	X24-01	A	Low	C	Assume 1-20 roads in Zone A
Electric power generation (fossil fuels)	X36	X36-01	A	Medium	C	
Medical/veterinary facilities (doctor or dentist offices, hospitals, nursing homes)	X40	X40-01	A	Low	C	

*Contaminant Source Inventory and Risk Ranking for
Lime Village Watering Point*

PWSID 280244.001

Table 5

Sources of Heavy Metals, Cyanide and Other Inorganic Chemicals

<i>Contaminant Source Type</i>	<i>Contaminant Source ID</i>	<i>CS ID tag</i>	<i>Zone</i>	<i>Risk Ranking for Analysis</i>	<i>Map Number</i>	<i>Comments</i>
Injection wells (Class V) Large-Capacity Septic System (Drainfield Disposal Method)	D10	D10-01	A	Low	C	School and teachers housing
Pit toilets (open hole), nonresidential (one or more)	D16	D16-01	A	Low	C	Assume 10 or less pit privies located in Zone A
Landfills (municipal; Class III)	D51	D51-01	A	High	C	
Tanks, heating oil, nonresidential (aboveground)	T14	T14-01	A	Low	C	Power Plant
Tanks, heating oil, nonresidential (aboveground)	T14	T14-02	A	Low	C	Clinic
Tanks, heating oil, nonresidential (aboveground)	T14	T14-03	A	Low	C	Teachers Quarters
Tanks, heating oil, nonresidential (aboveground)	T14	T14-04	A	Low	C	Traditional Council Office
Tanks, heating oil, nonresidential (aboveground)	T14	T14-05	A	Low	C	Russian Orthodox Church
Tanks, heating oil, nonresidential (aboveground)	T14	T14-06	A	Low	C	Community Hall
Tanks, heating oil, nonresidential (aboveground)	T14	T14-07	A	Low	C	Satellite
Tanks, heating oil, nonresidential (aboveground)	T14	T14-08	A	Low	C	Satellite
Tanks, heating oil, nonresidential (aboveground)	T14	T14-09	A	Low	C	UUT
Tanks, heating oil, nonresidential (aboveground)	T14	T14-10	A	Low	C	School
Cemeteries	X01	X01-01	A	Low	C	
Petroleum product bulk station/terminals	X11	X11-01	A	Low	C	IASD
Petroleum product bulk station/terminals	X11	X11-02	A	Low	C	Village Council
Petroleum product bulk station/terminals	X11	X11-03	A	Low	C	UUT
Petroleum product bulk station/terminals	X11	X11-04	A	Low	C	Electric Utility
Highways and roads, dirt/gravel	X24	X24-01	A	Low	C	Assume 1-20 roads in Zone A
Electric power generation (fossil fuels)	X36	X36-01	A	Medium	C	
Medical/veterinary facilities (doctor or dentist offices, hospitals, nursing homes)	X40	X40-01	A	Low	C	

*Contaminant Source Inventory and Risk Ranking for
Lime Village Watering Point
Sources of Synthetic Organic Chemicals*

PWSID 280244.001

Table 6

<i>Contaminant Source Type</i>	<i>Contaminant Source ID</i>	<i>CS ID tag</i>	<i>Zone</i>	<i>Risk Ranking for Analysis</i>	<i>Map Number</i>	<i>Comments</i>
Injection wells (Class V) Large-Capacity Septic System (Drainfield Disposal Method)	D10	D10-01	A	Low	C	School and teachers housing
Landfills (municipal; Class III)	D51	D51-01	A	Very High	C	
Cemeteries	X01	X01-01	A	Medium	C	
Petroleum product bulk station/terminals	X11	X11-01	A	Low	C	IASD
Petroleum product bulk station/terminals	X11	X11-02	A	Low	C	Village Council
Petroleum product bulk station/terminals	X11	X11-03	A	Low	C	UUT
Petroleum product bulk station/terminals	X11	X11-04	A	Low	C	Electric Utility
Medical/veterinary facilities (doctor or dentist offices, hospitals, nursing homes)	X40	X40-01	A	Low	C	

*Contaminant Source Inventory and Risk Ranking for
Lime Village Watering Point
Sources of Other Organic Chemicals*

PWSID 280244.001

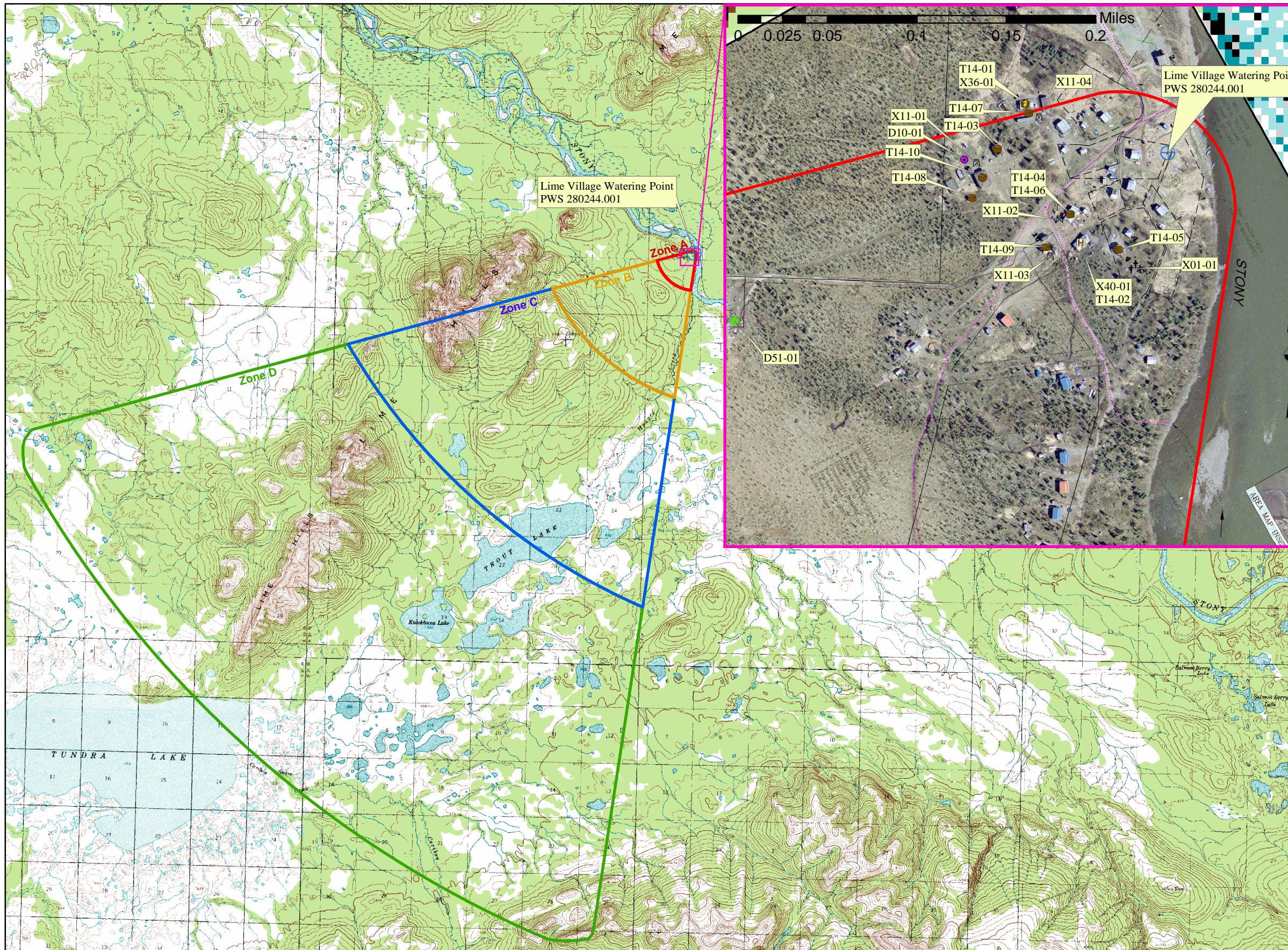
Table 7

<i>Contaminant Source Type</i>	<i>Contaminant Source ID</i>	<i>CS ID tag</i>	<i>Zone</i>	<i>Risk Ranking for Analysis</i>	<i>Map Number</i>	<i>Comments</i>
Injection wells (Class V) Large-Capacity Septic System (Drainfield Disposal Method)	D10	D10-01	A	Low	C	School and teachers housing
Landfills (municipal; Class III)	D51	D51-01	A	Very High	C	
Petroleum product bulk station/terminals	X11	X11-01	A	High	C	IASD
Petroleum product bulk station/terminals	X11	X11-02	A	High	C	Village Council
Petroleum product bulk station/terminals	X11	X11-03	A	High	C	UUT
Petroleum product bulk station/terminals	X11	X11-04	A	High	C	Electric Utility
Highways and roads, dirt/gravel	X24	X24-01	A	Low	C	Assume 1-20 roads in Zone A
Electric power generation (fossil fuels)	X36	X36-01	A	High	C	

APPENDIX C

Drinking Water Protection Area and Potential and Existing Contaminant Sources (Map C)

**Public Water Well System for PWS #280244.001 Lime Village Watering Point
Showing Potential and Existing Sources of Contamination**



LEGEND

- Public Water System Well
- Hydrography/Physical**
 - Parcels
 - Stream
 - Lake or Pond
 - Contours
- Transportation**
 - Primary Route (Class 1)
 - Secondary Route (Class 2)
 - Road (Class 3)
 - Road (Class 4)
 - Road (Class 5, Four-wheel drive)
- Groundwater Protection Zones**
 - Zone A Protection Area- Several Months Travel Time
 - Zone B Protection Area- 2 Years Travel Time
 - Zone C Protection Area- 5 Years Travel Time
 - Zone D Protection Area- 10 Years Travel Time
- Existing or Potential Contaminant Sources**
 - Injection well (Class V) Large-capacity septic system (Drainfield disposal method) (D10)
 - Landfill (municipal; Class III) (D51)
 - Nonresidential aboveground heating oil tank (T14)
 - Cemetery (X01)
 - Petroleum product bulk station/terminal (X11)
 - Electric power generation (fossil fuels) (X36)
 - Medical/veterinary facility (X40)

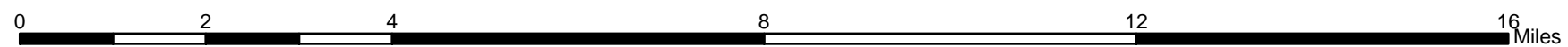
Data Sources:

Contaminant Sources, Public Water System Wells, Contours
Alaska Department of Environmental Conservation (ADEC)
Critical Facilities, Federal Emergency Management Agency (FEMA)

All other data:

United States Geological Survey (USGS)
Drinking Water Protection Areas based on "Alaska Drinking Water Protection Program - Guidance Manual for Class A Public Water Systems" published by ADEC

URS Corporation does not guarantee the accuracy or validity of the data provided.



Lime Village Watering Point
PWS 280244.001

Appendix C Map C

APPENDIX D

Vulnerability Analysis for Public Drinking Water Source (Charts 1-14)

Chart 1. Susceptibility of the wellhead - Lime Village Watering Point (PWS No. 280244.001)

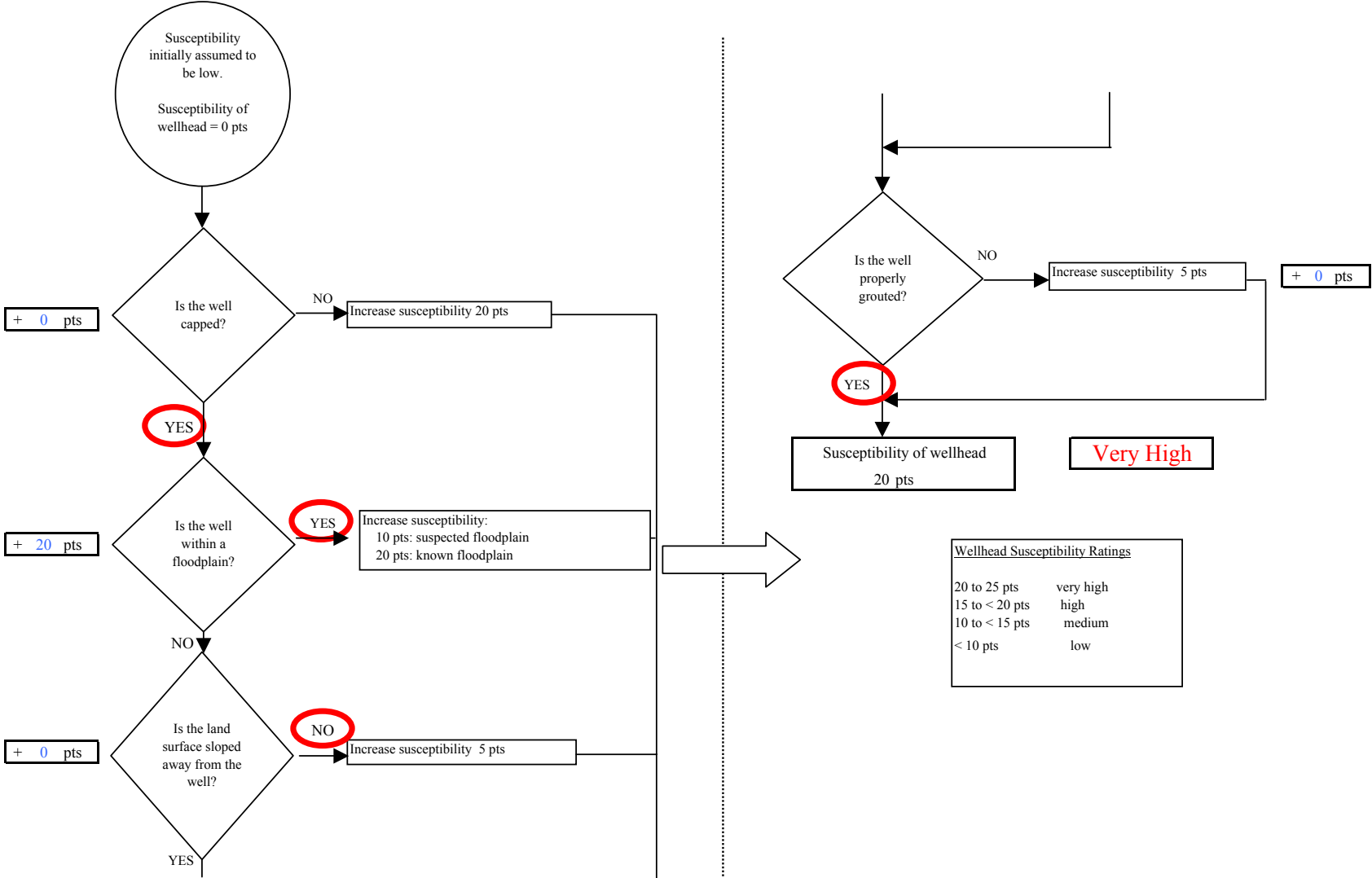


Chart 2. Susceptibility of the aquifer Lime Village Watering Point (PWS No. 280244.001)

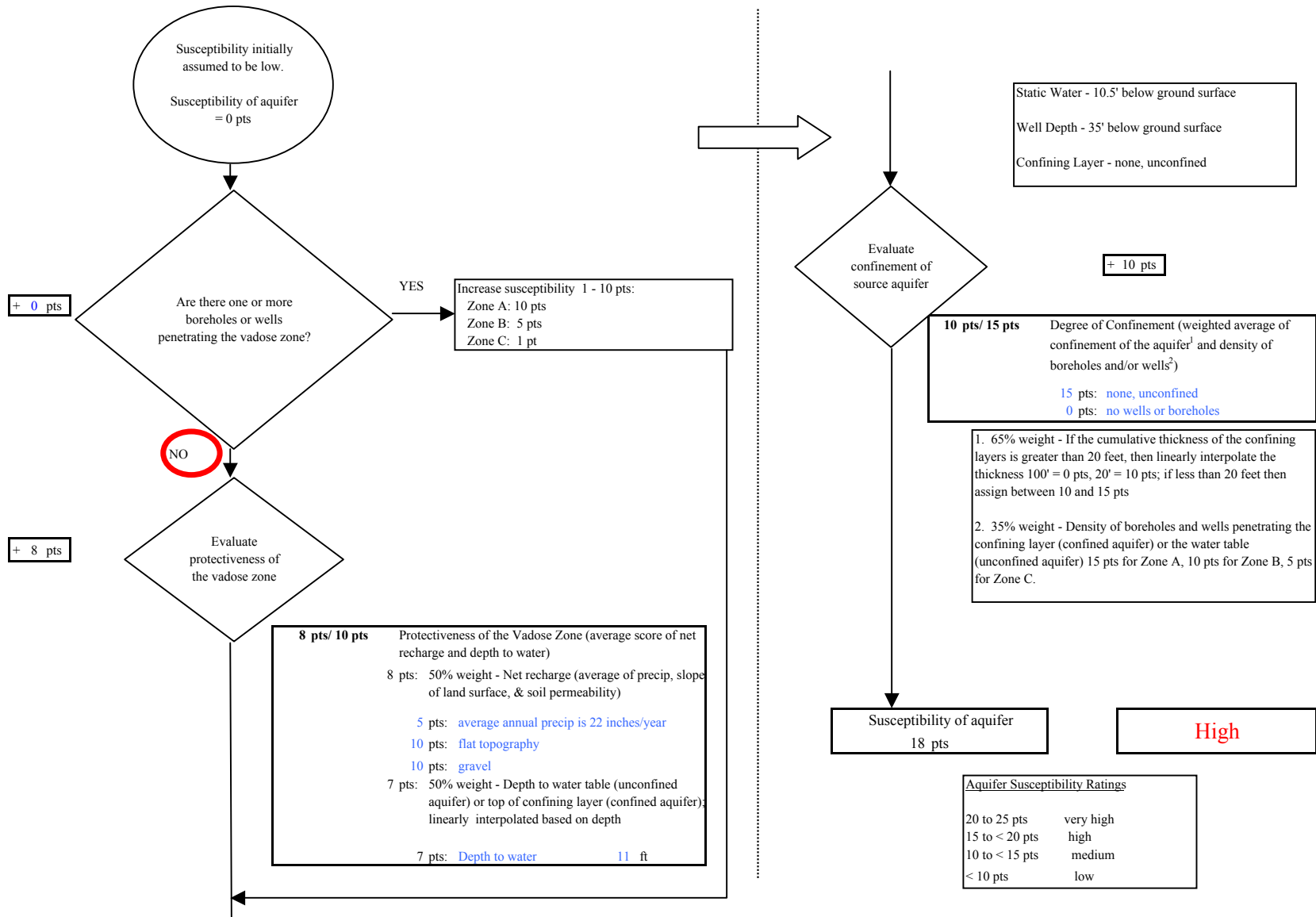


Chart 3. Contaminant risks for Lime Village Watering Point (PWS No. 280244.001) - Bacteria & Viruses

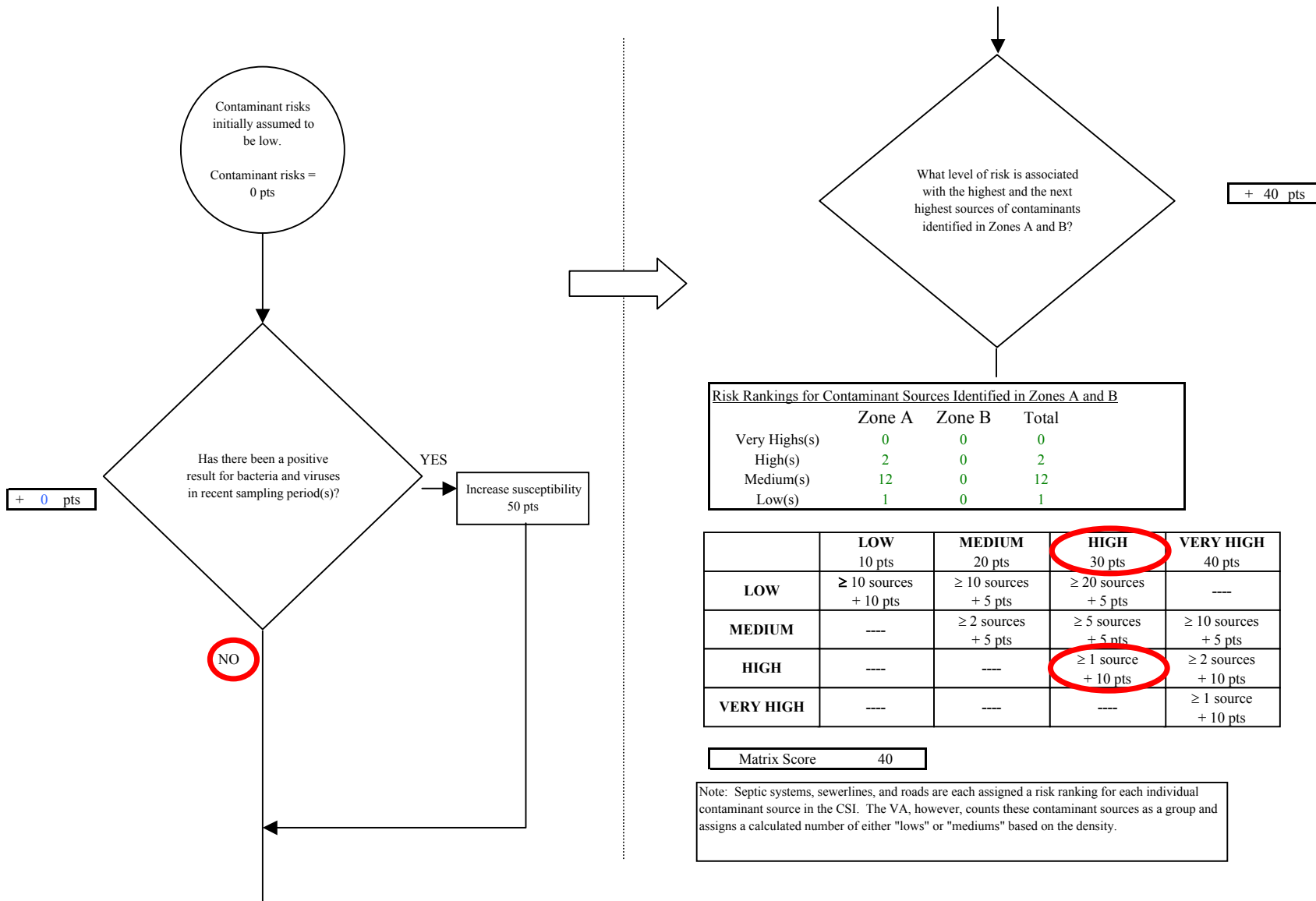


Chart 3. Contaminant risks for Lime Village Watering Point (PWS No. 280244.001) - Bacteria & Viruses

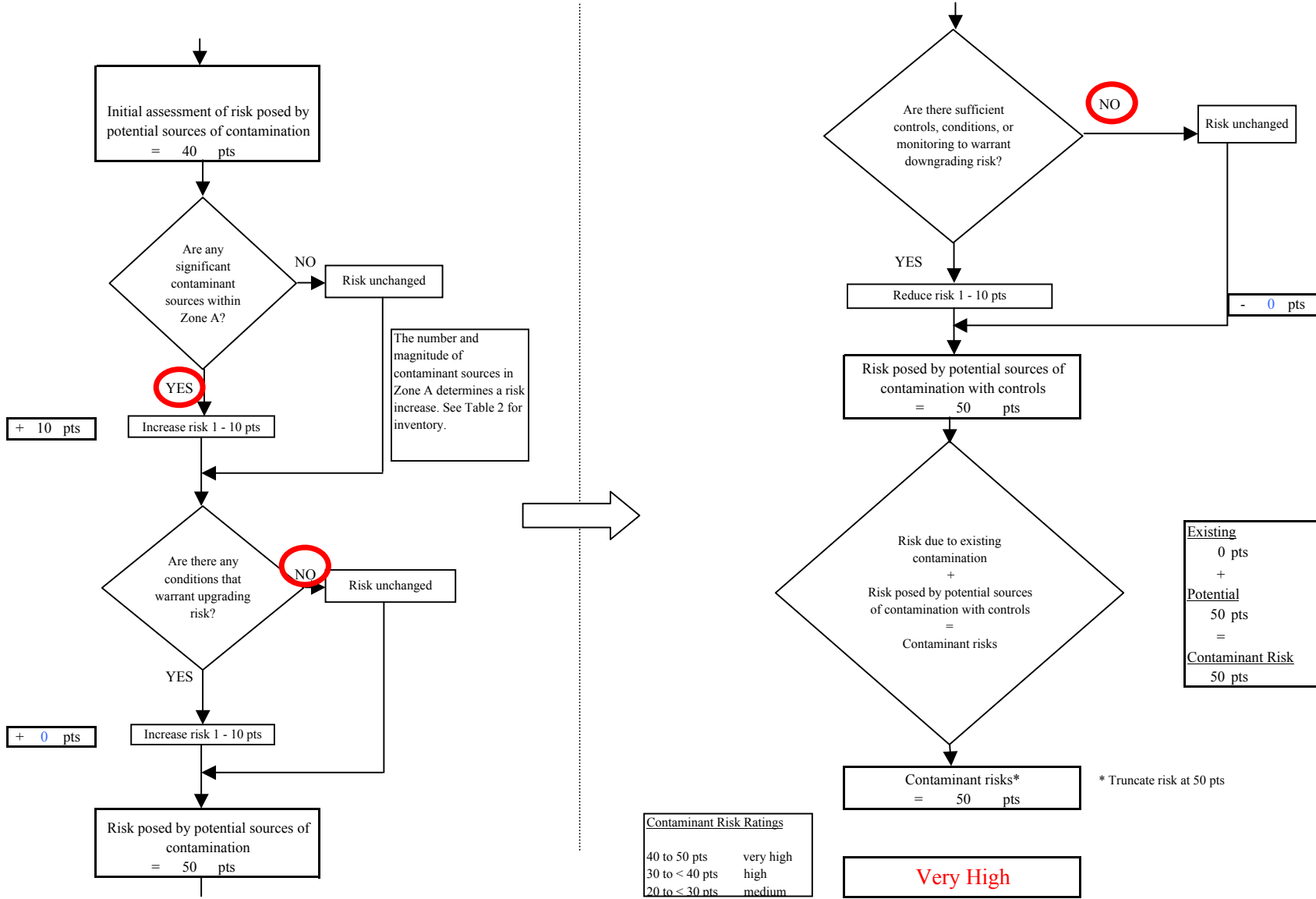


Chart 4. Vulnerability analysis for Lime Village Watering Point (PWS No. 280244.001) - Bacteria & Viruses

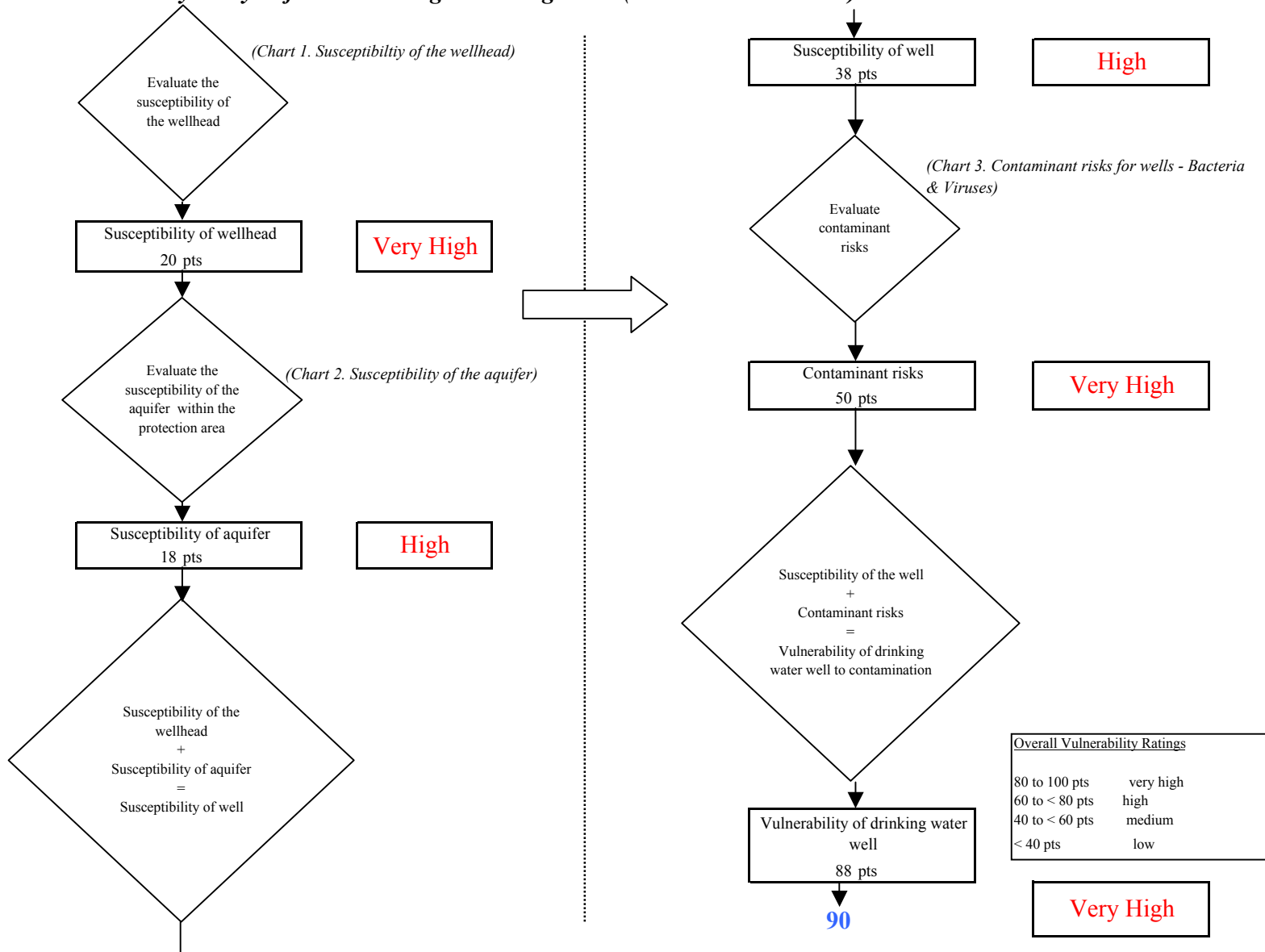


Chart 5. Contaminant risks for Lime Village Watering Point (PWS No. 280244.001) - Nitrates and Nitrites

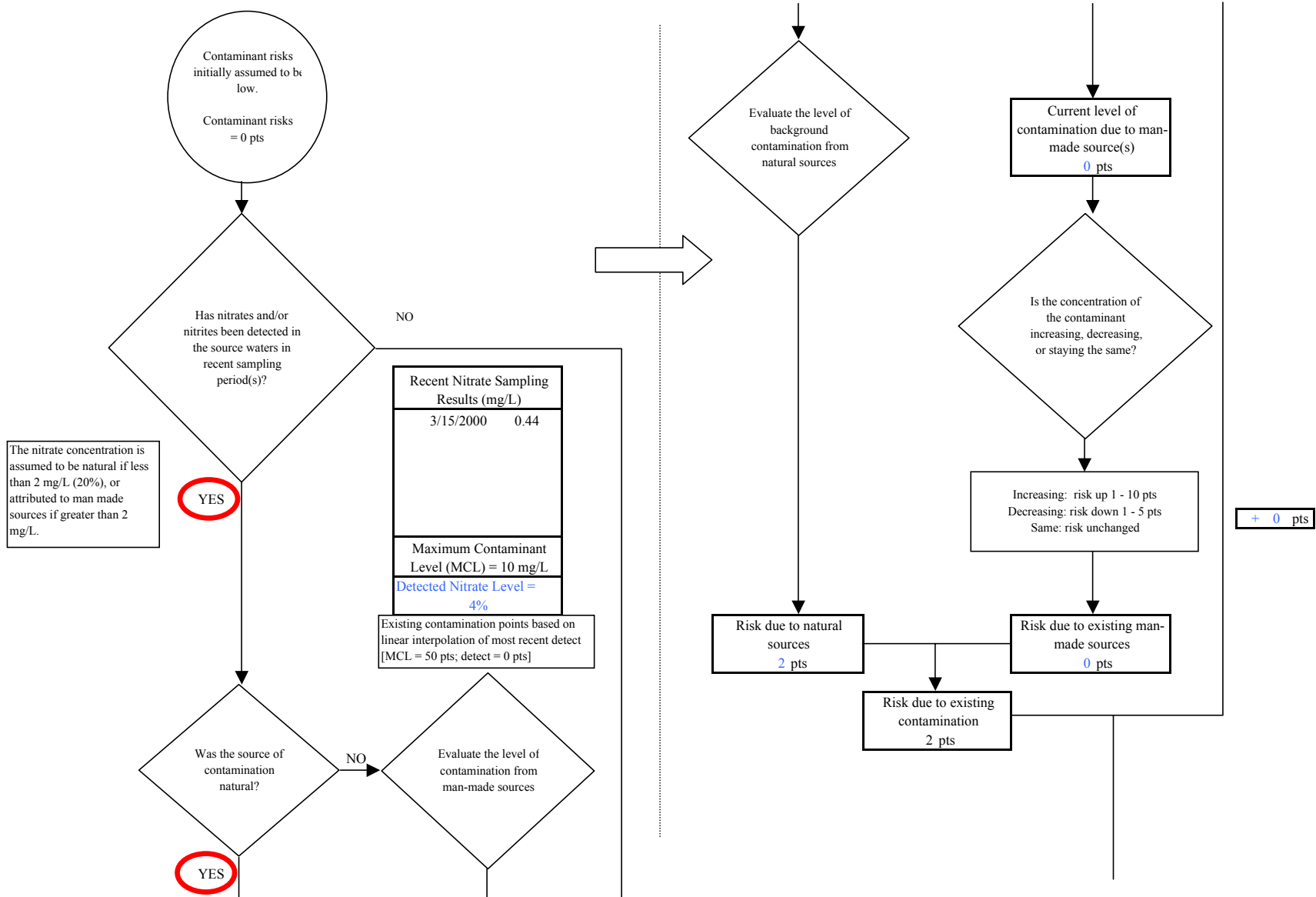


Chart 5. Contaminant risks for Lime Village Watering Point (PWS No. 280244.001) - Nitrates and Nitrites

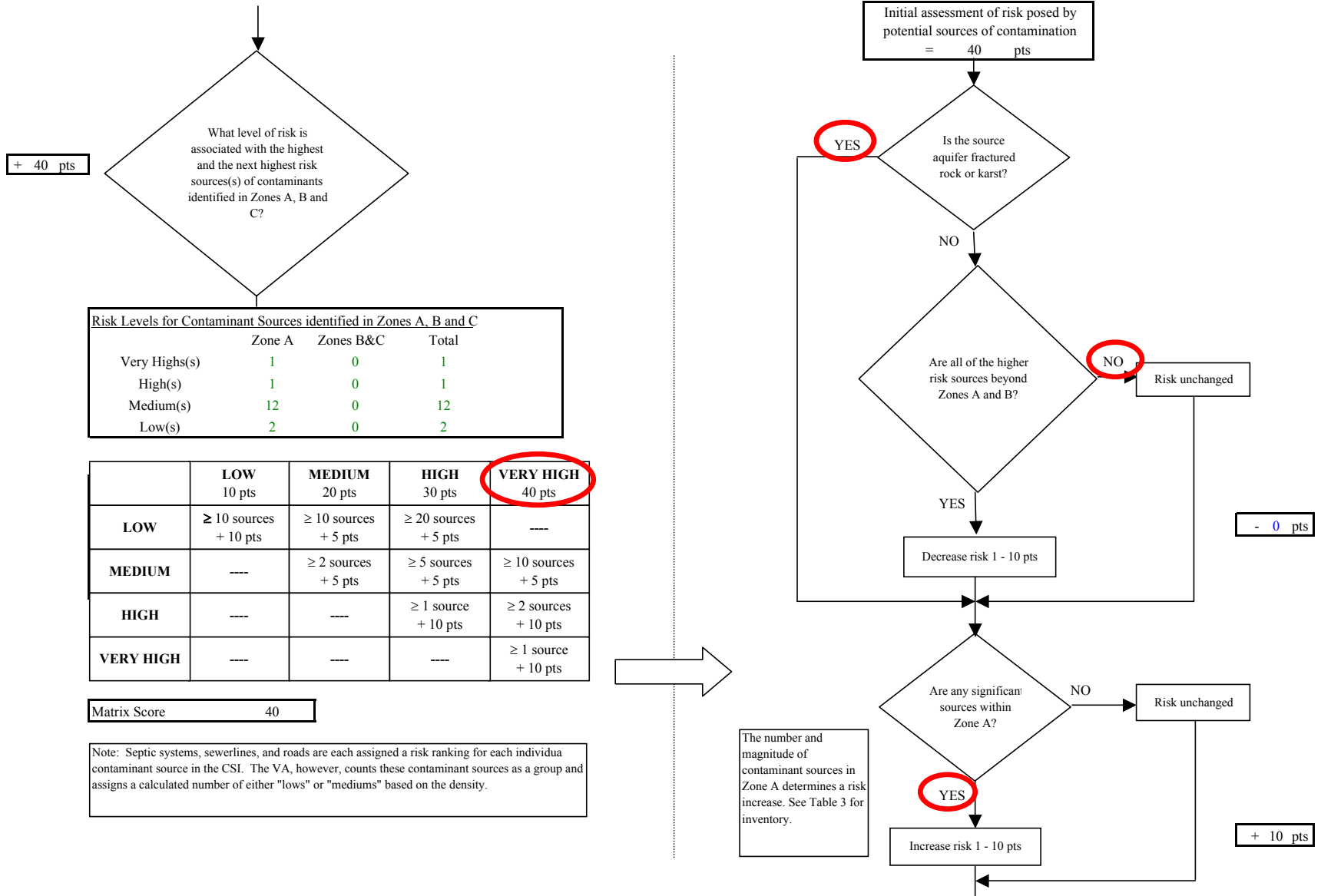


Chart 5. Contaminant risks for Lime Village Watering Point (PWS No. 280244.001) - Nitrates and Nitrites

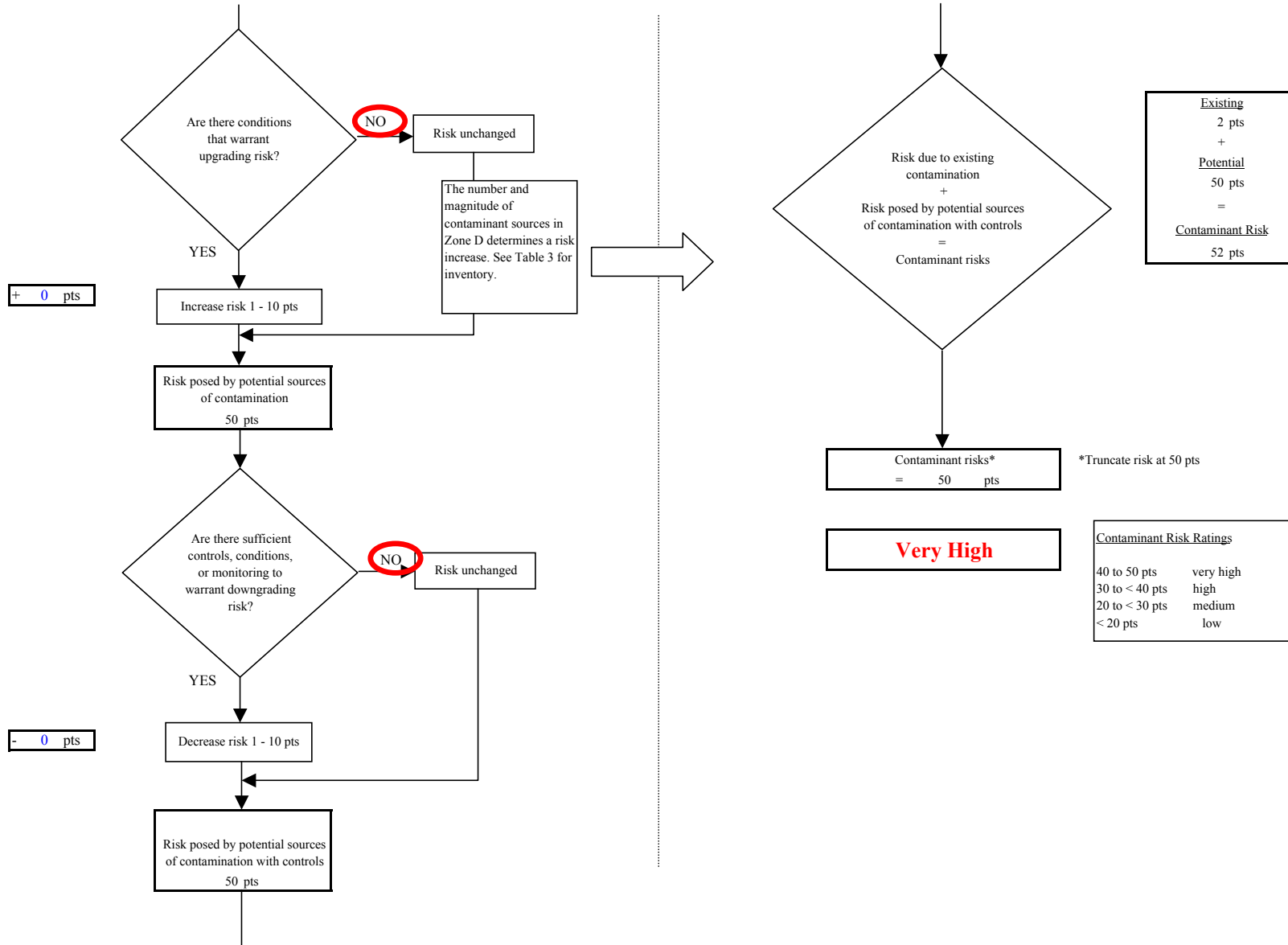


Chart 6. Vulnerability analysis for Lime Village Watering Point (PWS No. 280244.001) - Nitrates and Nitrites

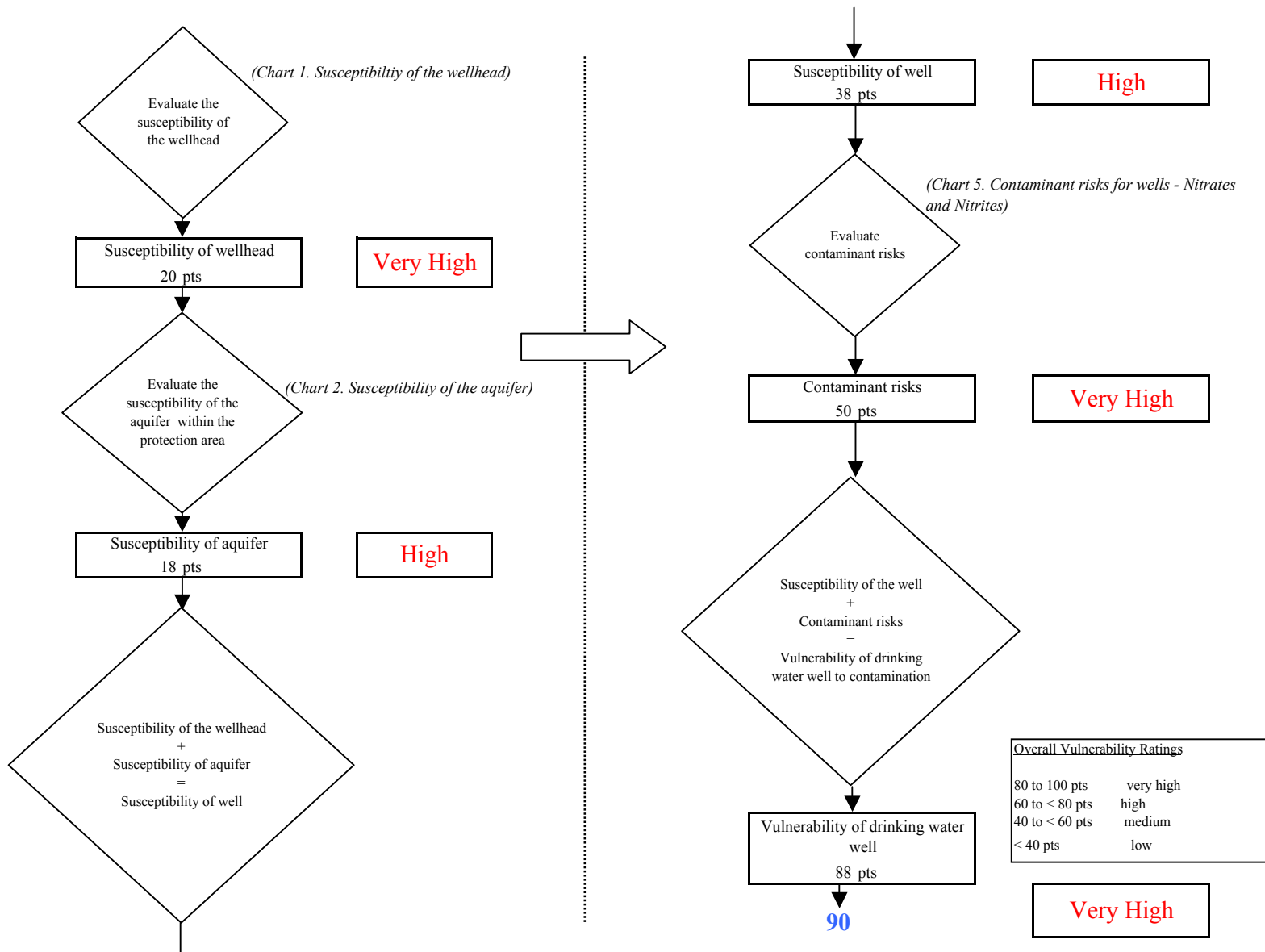


Chart 7. Contaminant risks for Lime Village Watering Point (PWS No. 280244.001) - Volatile Organic Chemicals

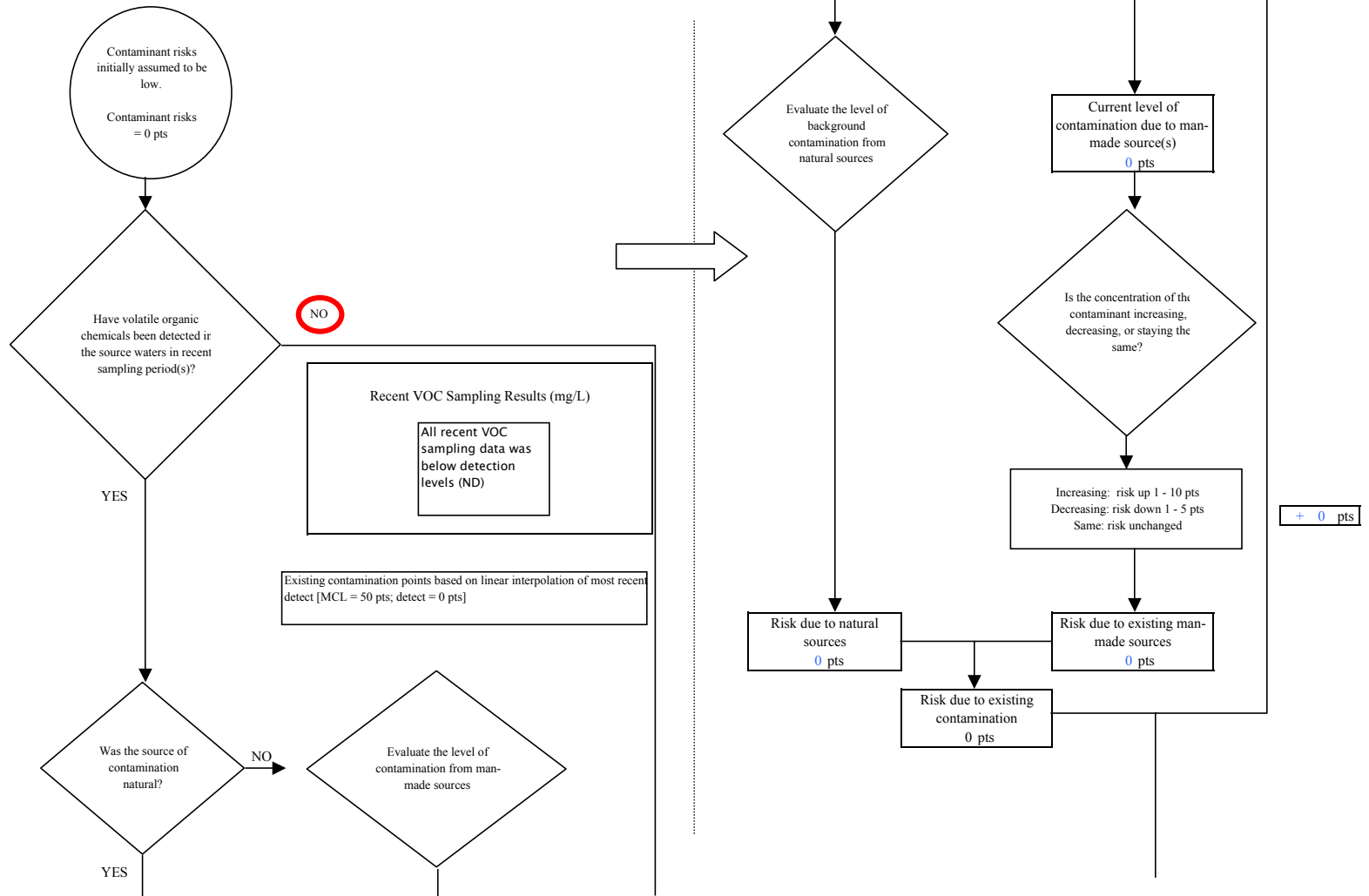


Chart 7. Contaminant risks for Lime Village Watering Point (PWS No. 280244.001) - Volatile Organic Chemicals

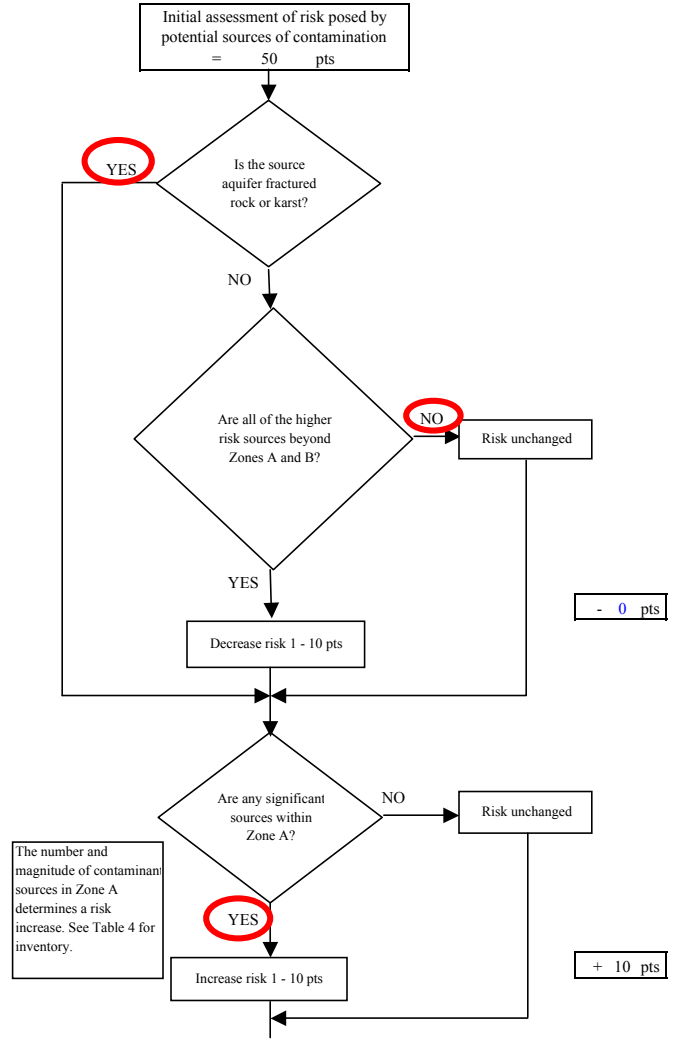
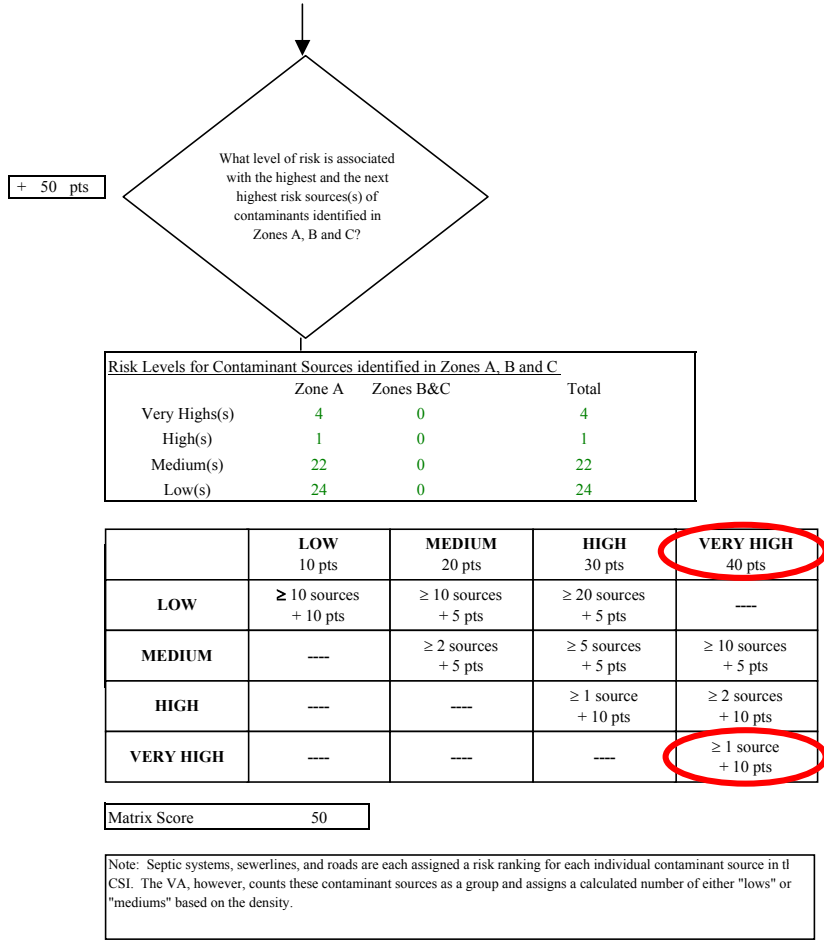


Chart 7. Contaminant risks for Lime Village Watering Point (PWS No. 280244.001) - Volatile Organic Chemicals

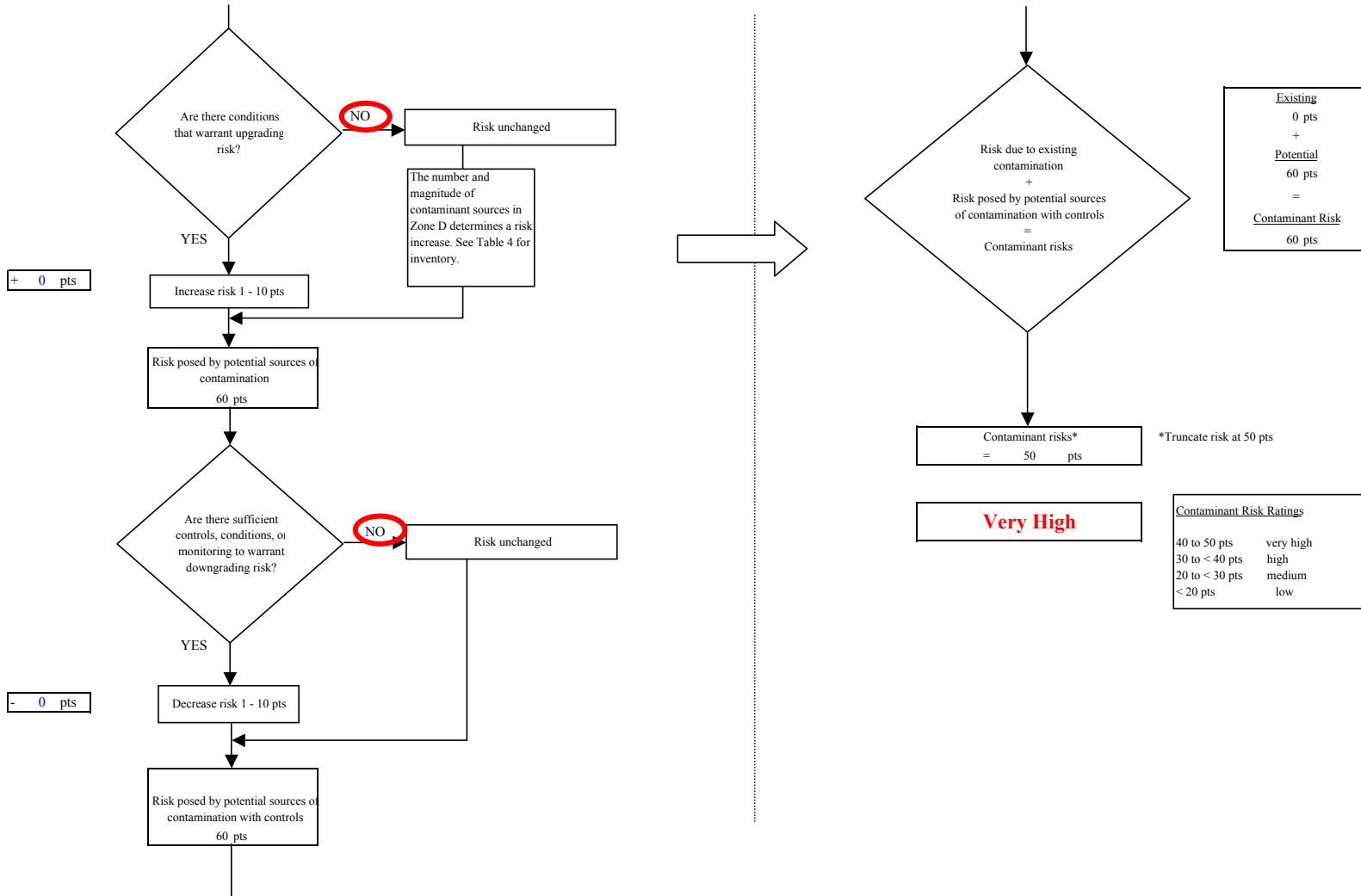


Chart 8. Vulnerability analysis for Lime Village Watering Point (PWS No. 280244.001) - Volatile Organic Chemicals

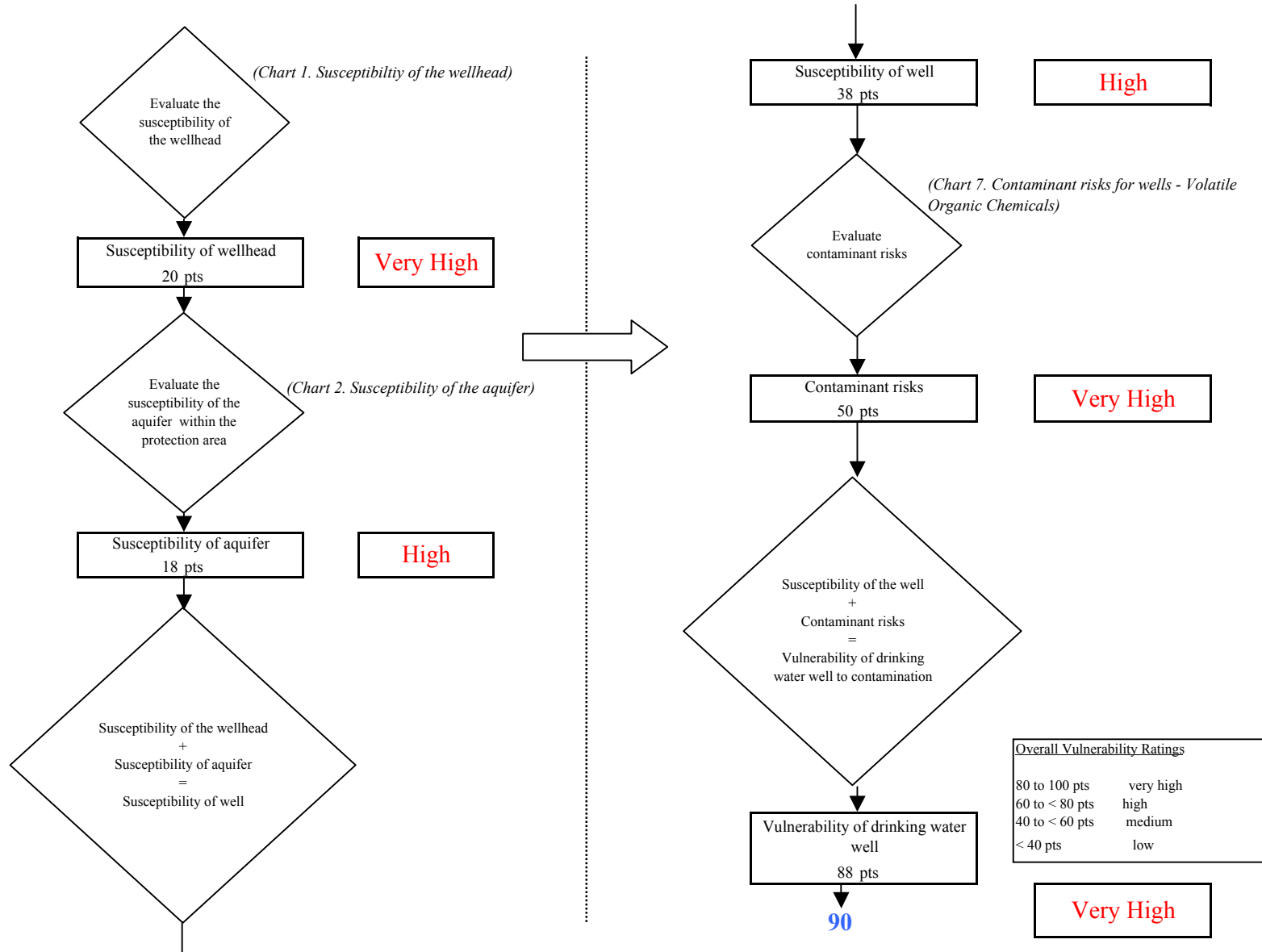


Chart 9. Contaminant risks for Lime Village Watering Point (PWS No. 280244.001) - Heavy Metals, Cyanide and Other Inorganic Chemicals

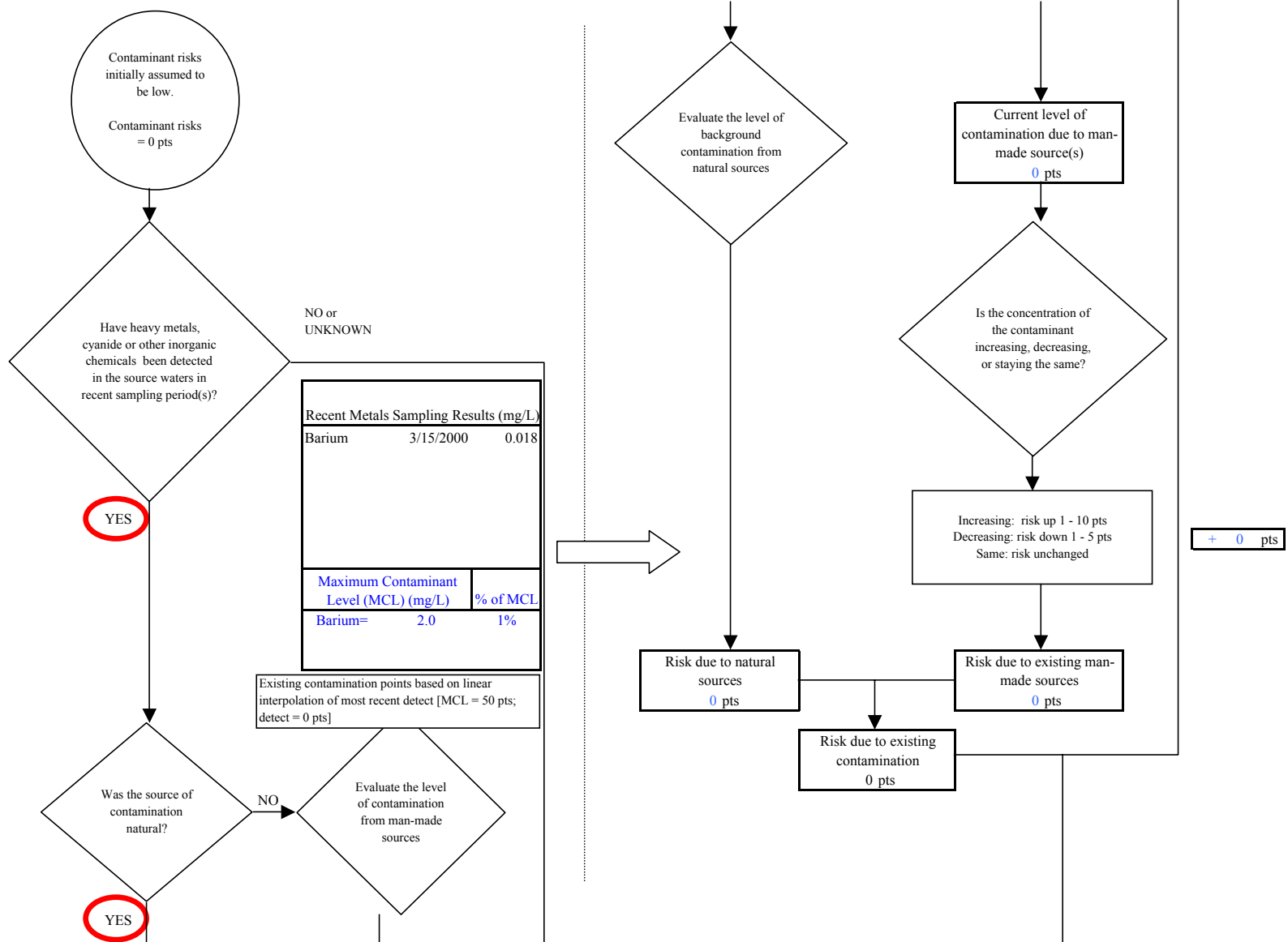


Chart 9. Contaminant risks for Lime Village Watering Point (PWS No. 280244.001) - Heavy Metals, Cyanide and Other Inorganic Chemicals

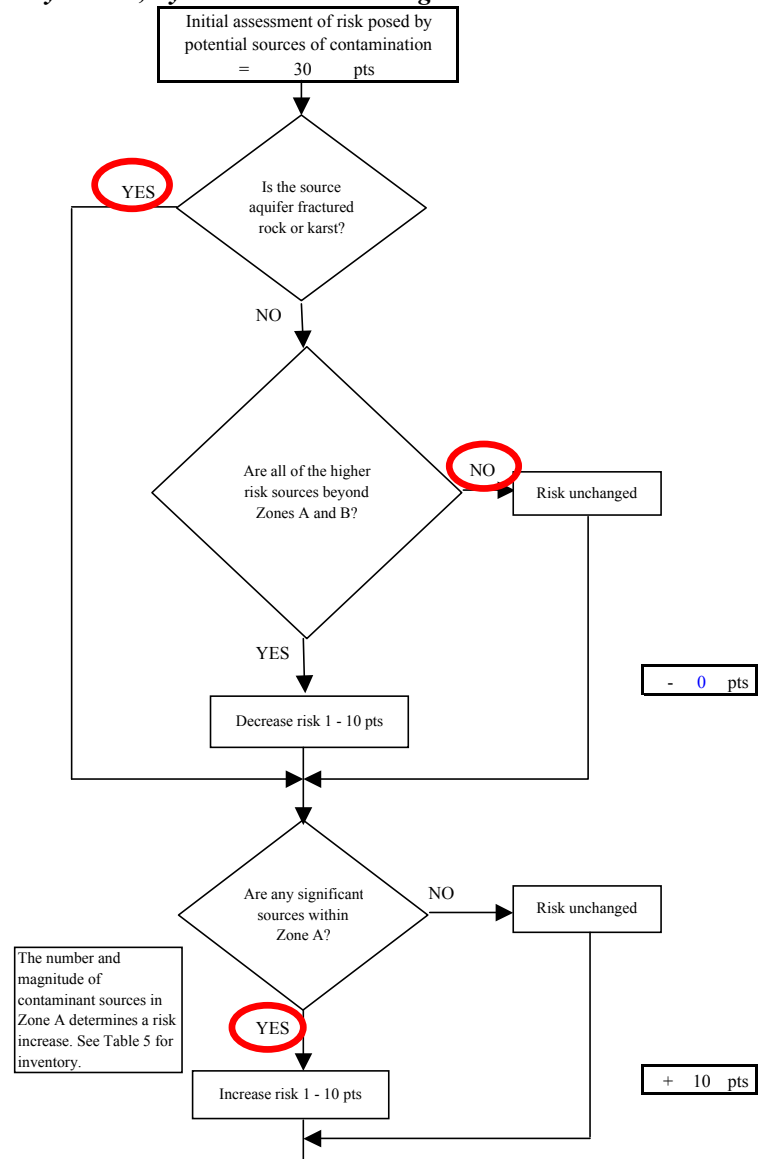
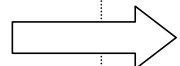
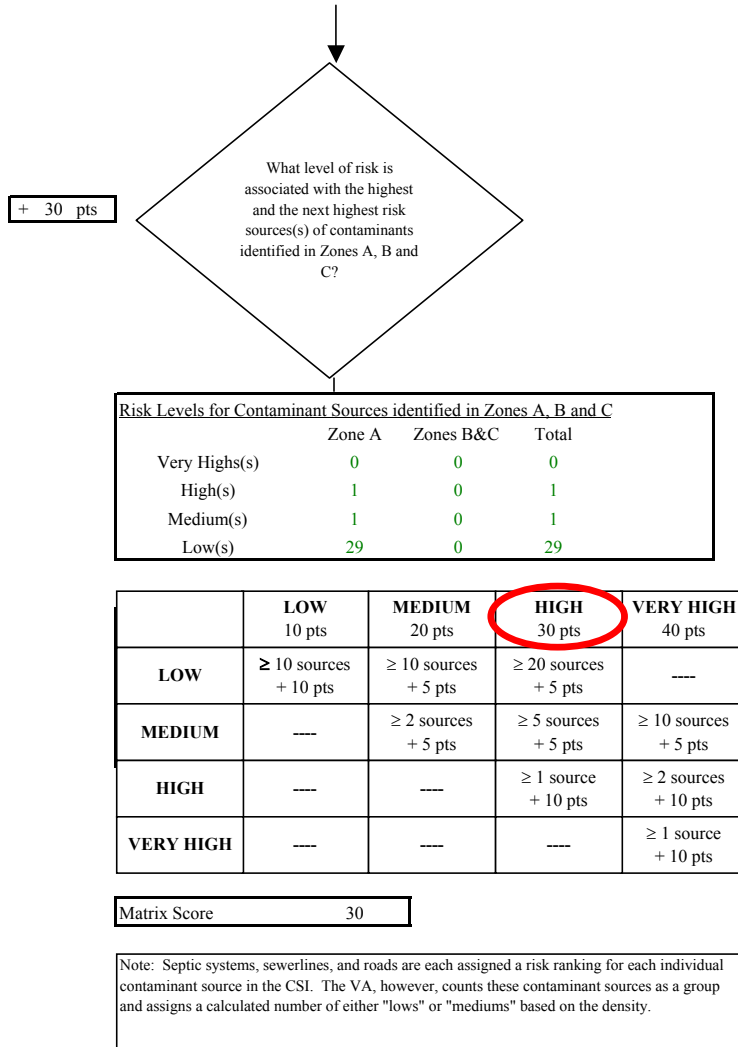


Chart 9. Contaminant risks for Lime Village Watering Point (PWS No. 280244.001) - Heavy Metals, Cyanide and Other Inorganic Chemicals

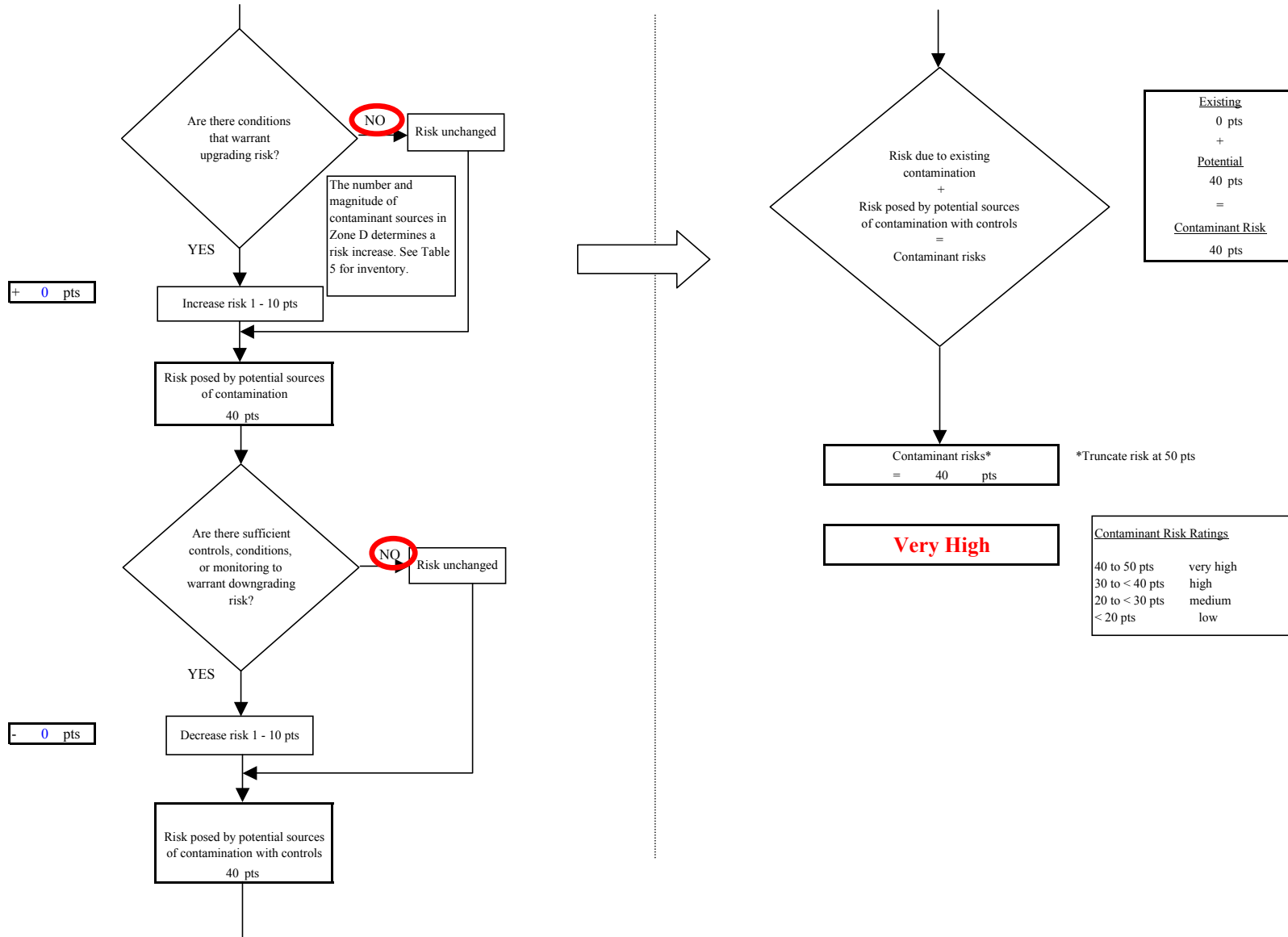


Chart 10. Vulnerability analysis for Lime Village Watering Point (PWS No. 280244.001) - Heavy Metals, Cyanide and Other Inorganic Chemicals

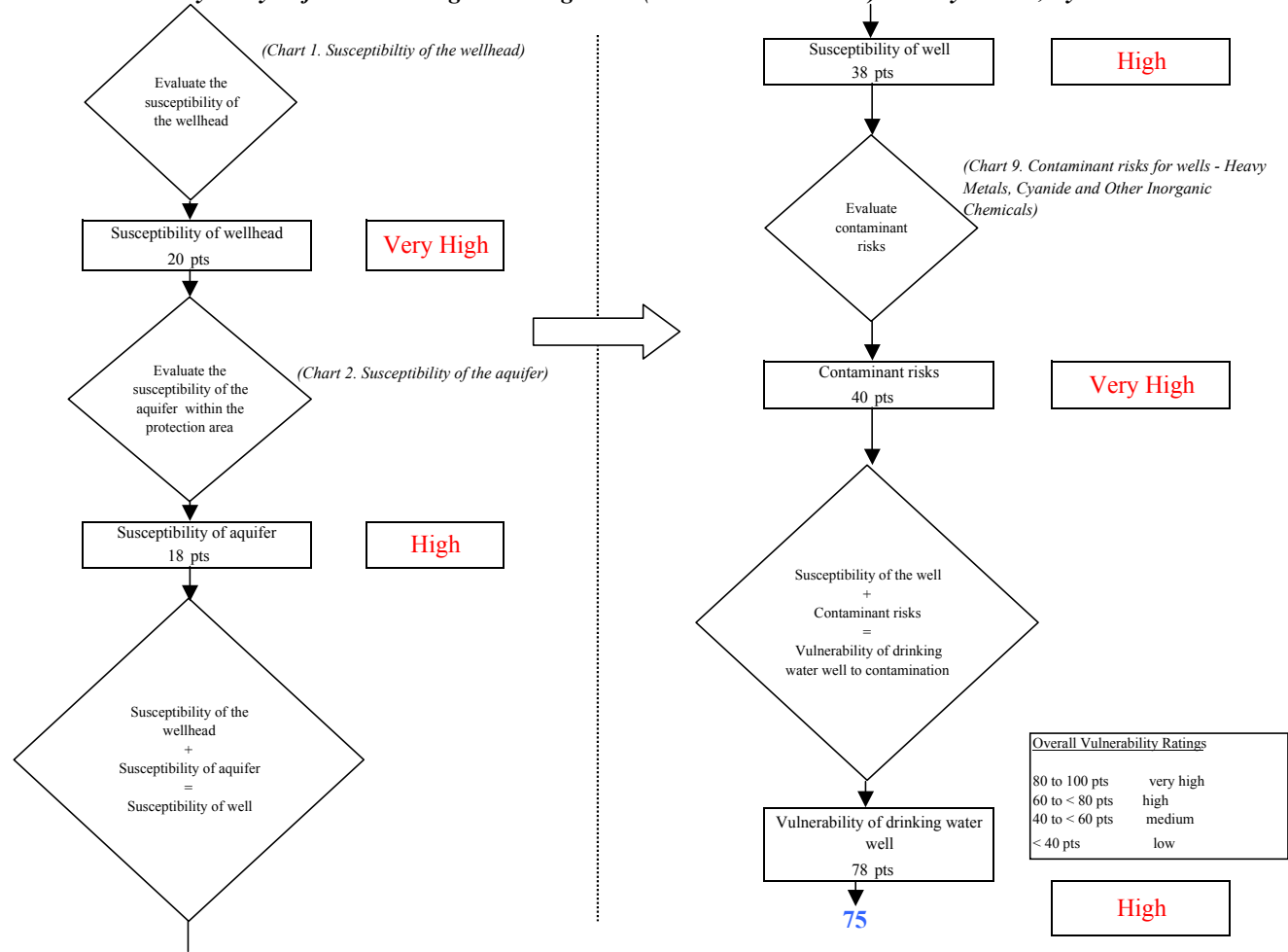


Chart 11. Contaminant risks for Lime Village Watering Point (PWS No. 280244.001) - Synthetic Organic Chemicals

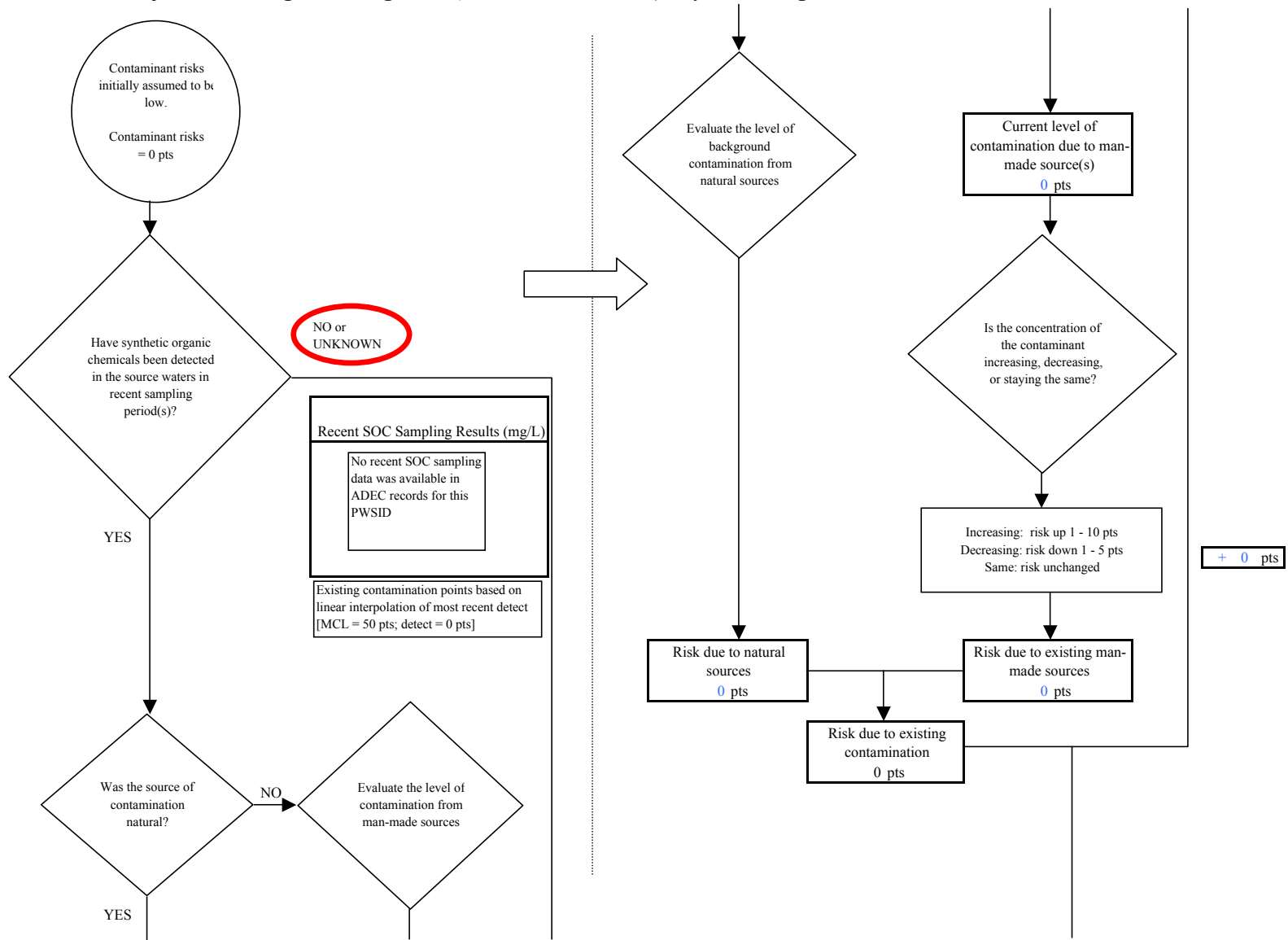


Chart 11. Contaminant risks for Lime Village Watering Point (PWS No. 280244.001) - Synthetic Organic Chemicals

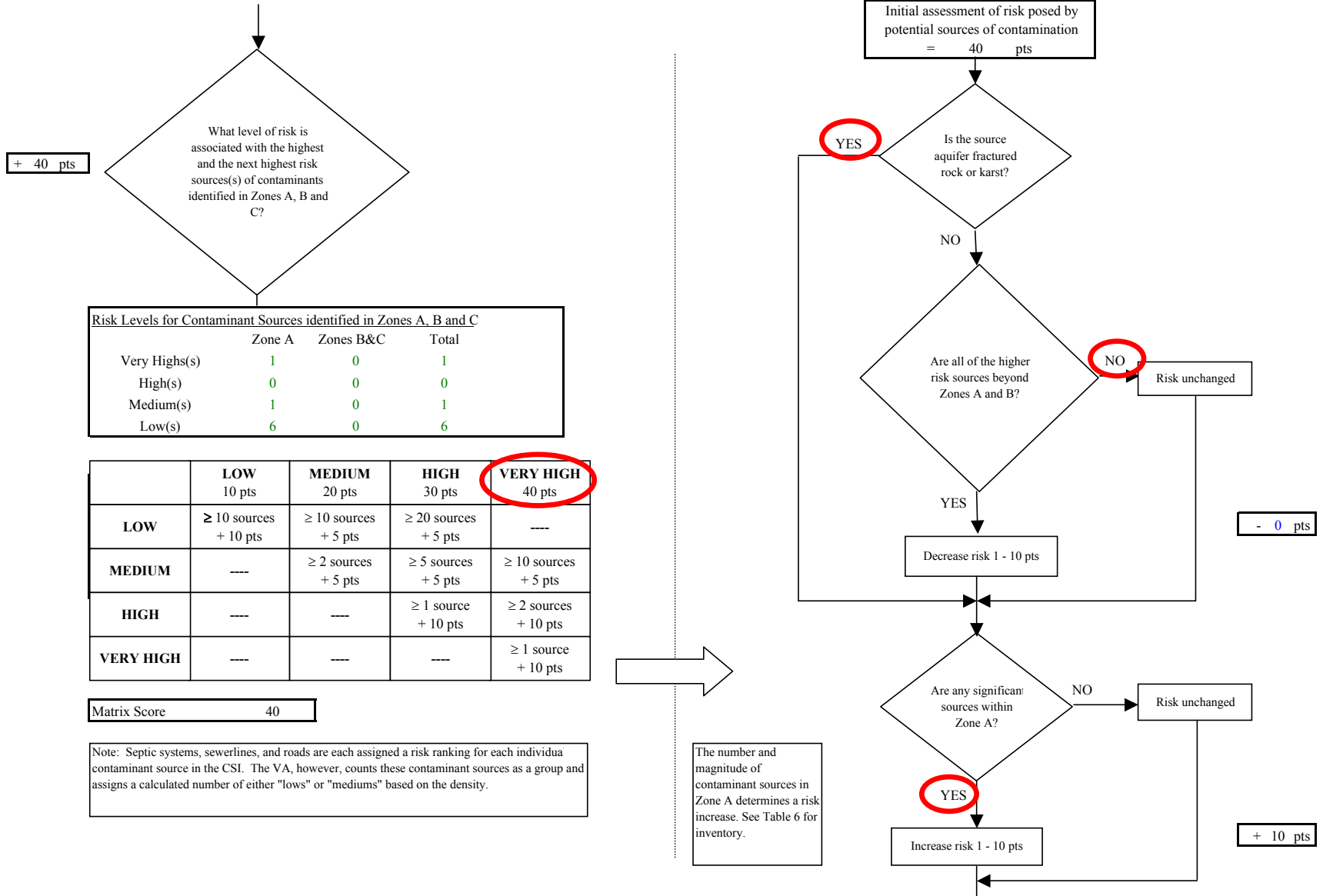


Chart 11. Contaminant risks for Lime Village Watering Point (PWS No. 280244.001) - Synthetic Organic Chemicals

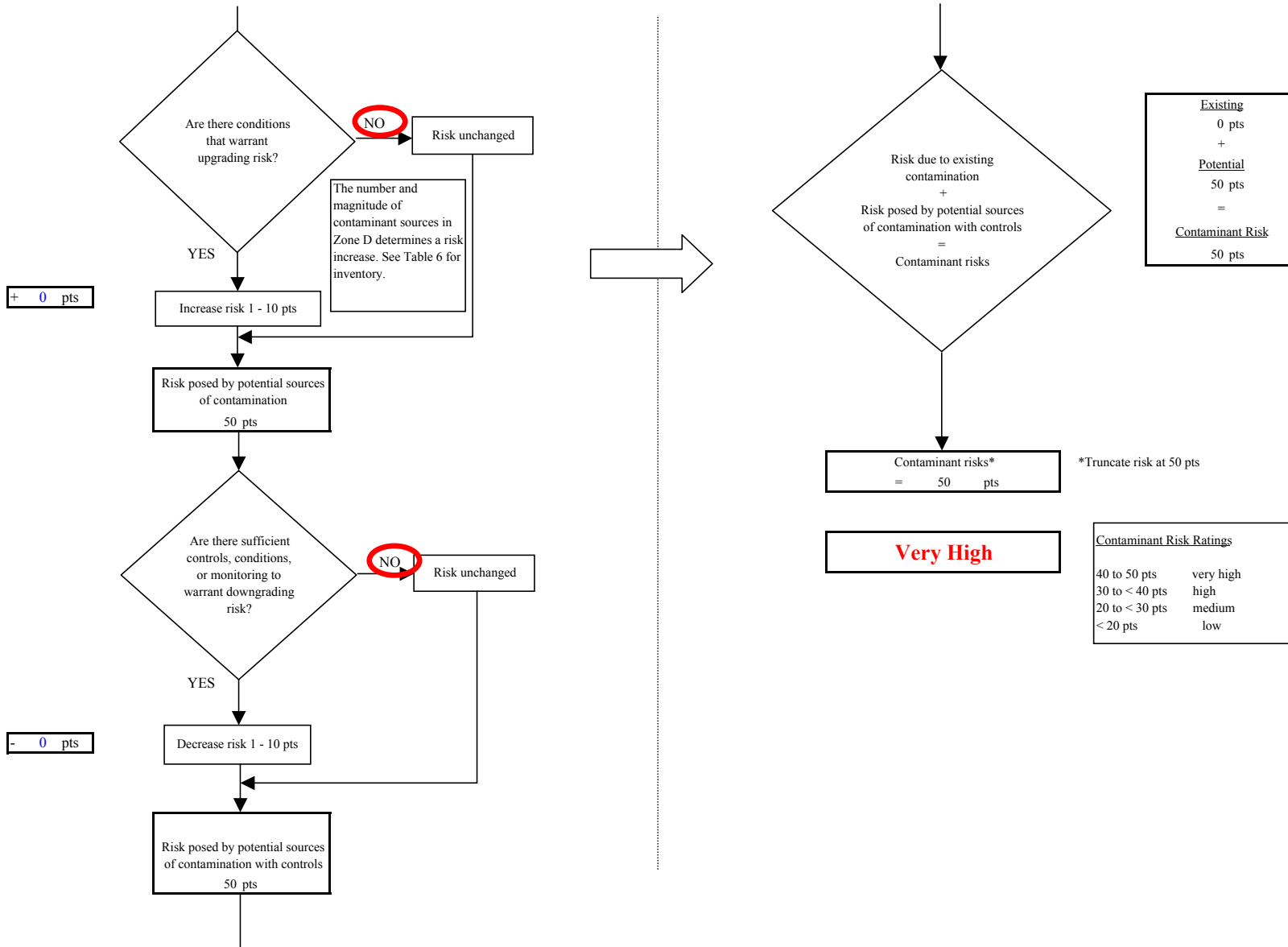


Chart 12. Vulnerability analysis for Lime Village Watering Point (PWS No. 280244.001) - Synthetic Organic Chemicals

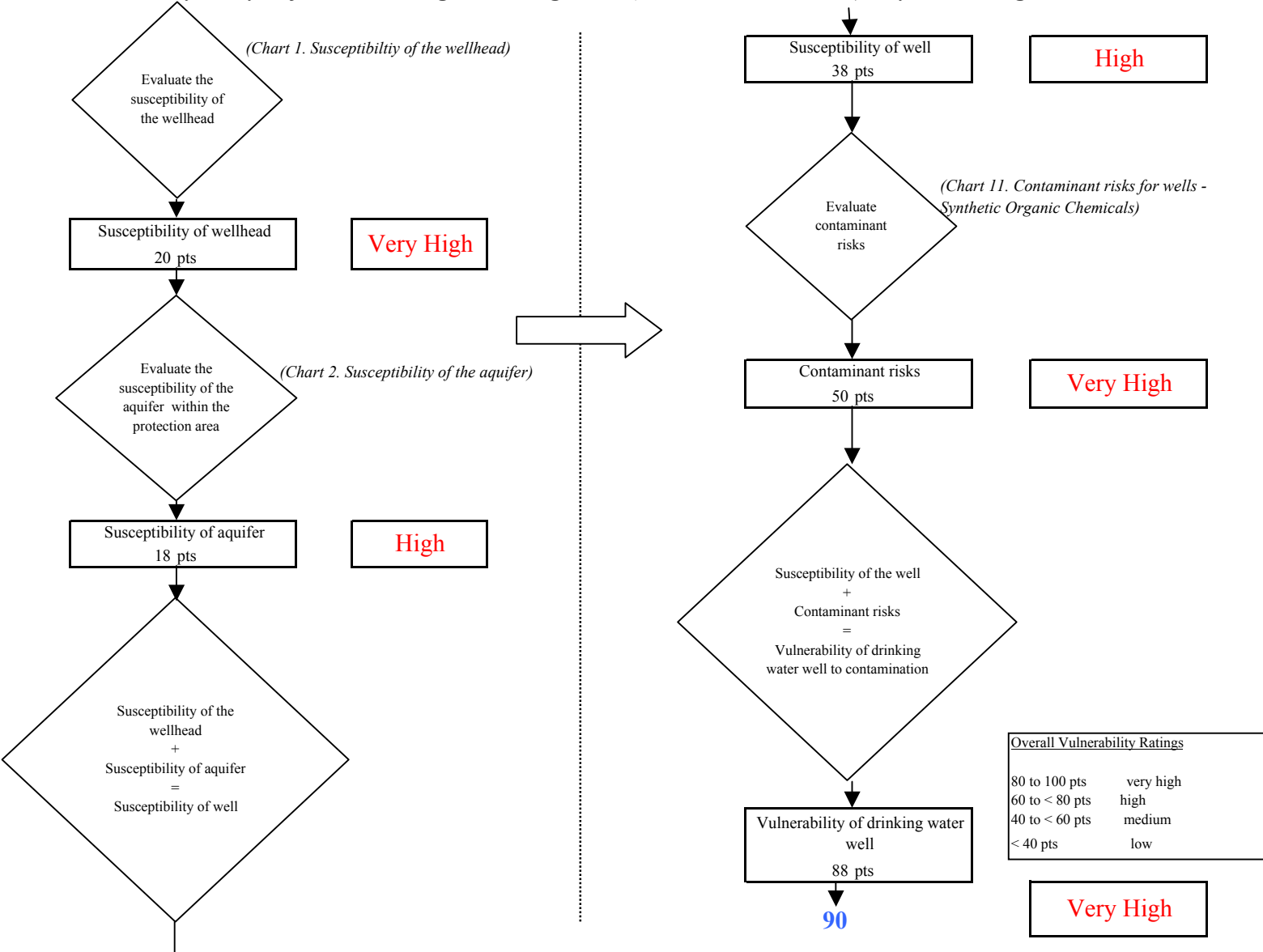


Chart 13. Contaminant risks for Lime Village Watering Point (PWS No. 280244.001) - Other Organic Chemicals

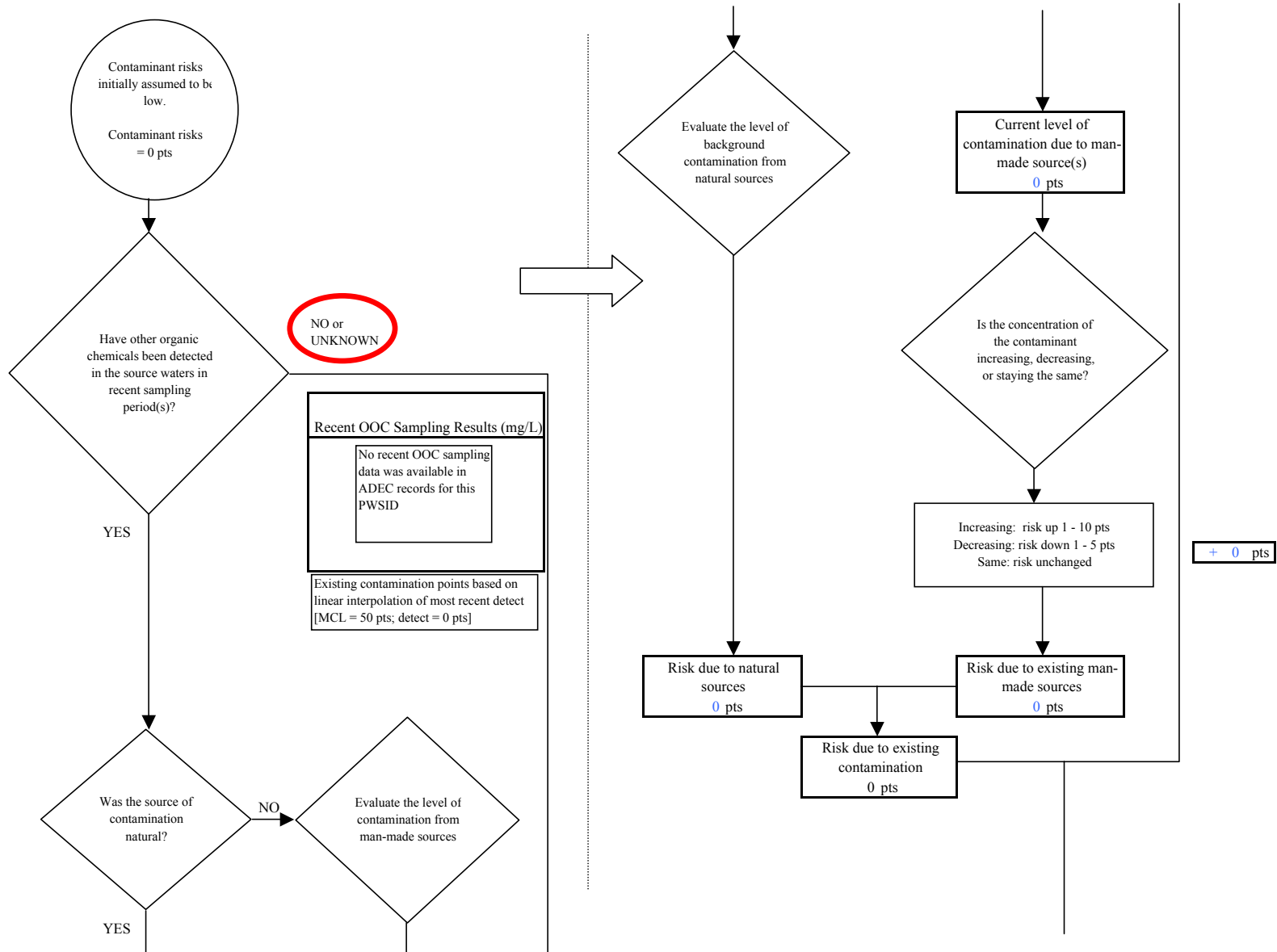


Chart 13. Contaminant risks for Lime Village Watering Point (PWS No. 280244.001) - Other Organic Chemicals

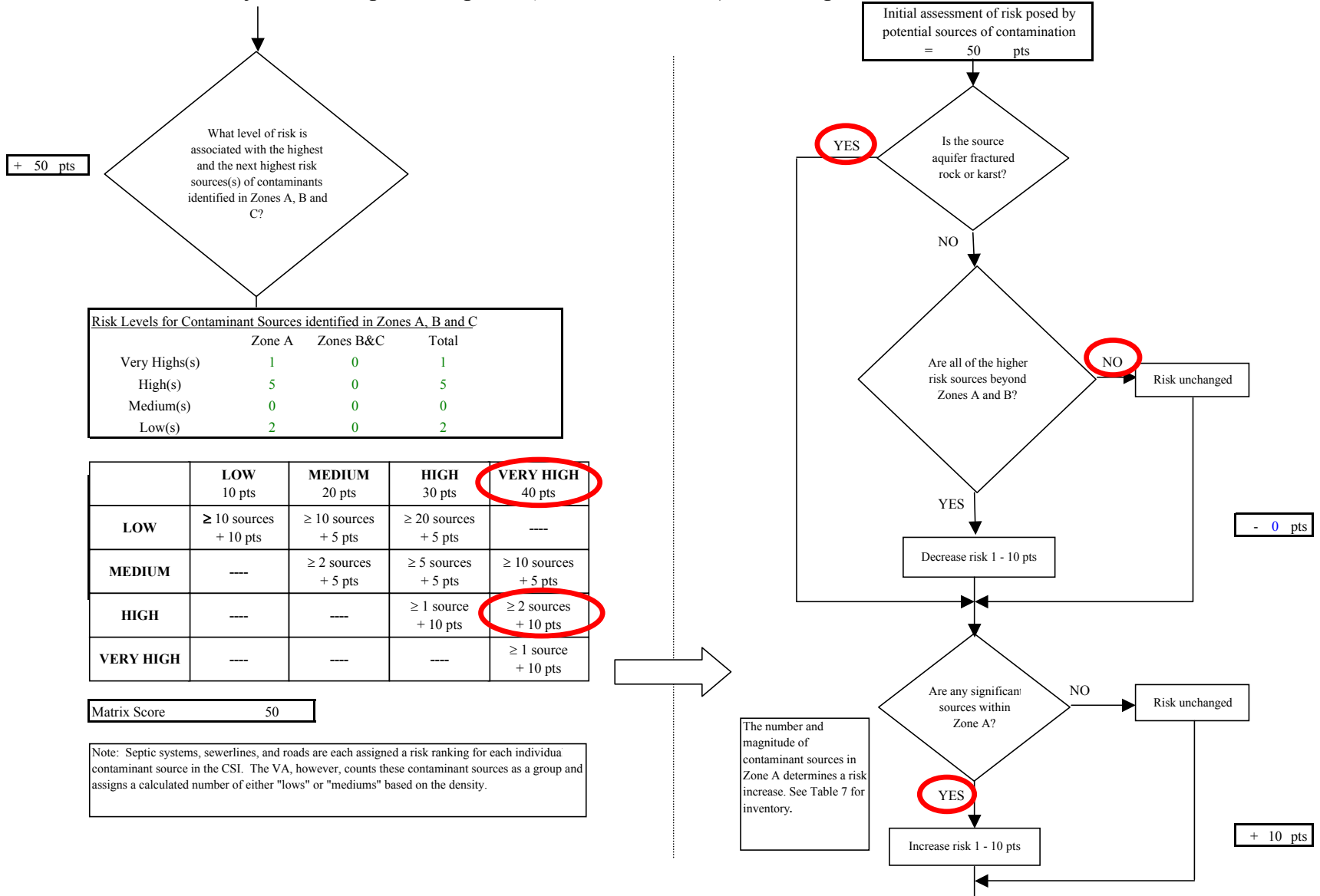


Chart 13. Contaminant risks for Lime Village Watering Point (PWS No. 280244.001) - Other Organic Chemicals

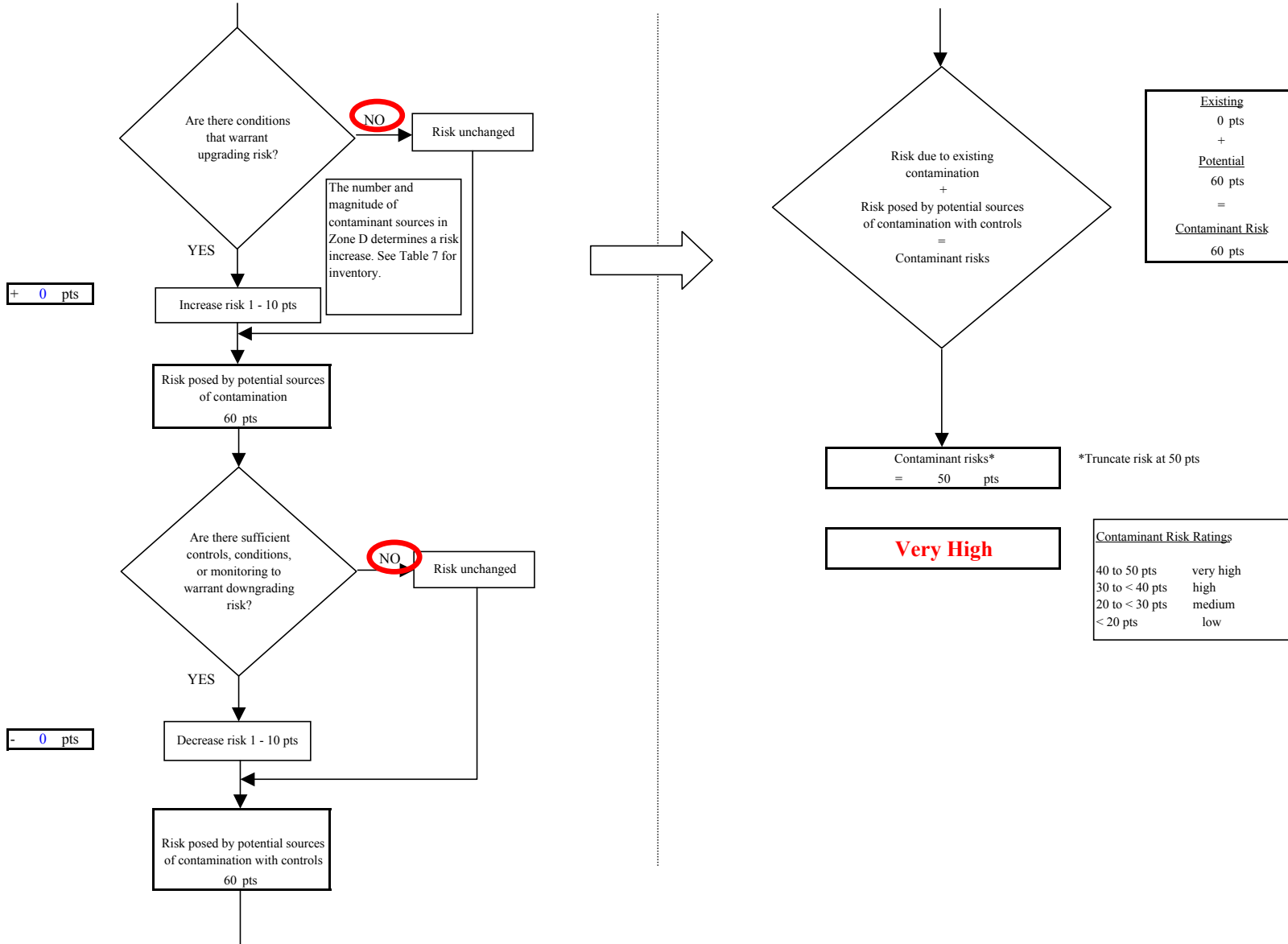


Chart 14. Vulnerability analysis for Lime Village Watering Point (PWS No. 280244.001) - Other Organic Chemicals

