

Source Water Assessment

A Hydrogeologic Susceptibility and
Vulnerability Assessment for
Eddies Fireplace Inn
Drinking Water System,
King Salmon, Alaska

PWSID # 261486.001

March 2004

DRINKING WATER PROTECTION PROGRAM REPORT 1183
Alaska Department of Environmental Conservation

Source Water Assessment for Eddies Fireplace Inn Drinking Water System King Salmon, Alaska

PWSID # 261486.001

DRINKING WATER PROTECTION PROGRAM REPORT 1183

The Drinking Water Protection Program (DWPP) is producing Source Water Assessments in compliance with the Safe Drinking Water Act Amendments of 1996. Each assessment includes a delineation of the source water area, an inventory of potential and existing contaminant sources that may impact the water, a risk ranking for each of these contaminants, and an evaluation of the potential vulnerability of these drinking water sources.

These assessments are intended to provide public water systems owners/operators, communities, and local governments with the best available information that may be used to protect the quality of their drinking water. The assessments combine information obtained from various sources, including the U.S. Environmental Protection Agency, Alaska Department of Environmental Conservation (ADEC), public water system owners/operators, and other public information sources. The results of this assessment are subject to change if additional data becomes available. It is anticipated this assessment will be updated every five years to reflect any changes in the vulnerability and/or susceptibility of public drinking water source. If you have any additional information that may affect the results of this assessment, please contact the Program Coordinator of DWPP, (907) 269-7521.

CONTENTS

EXECUTIVE SUMMARY	1	INVENTORY OF POTENTIAL AND EXISTING CONTAMINANT SOURCES.....	2
EDDIES FIREPLACE INN PUBLIC DRINKING WATER SYSTEM	1	RANKING OF CONTAMINANT RISKS	2
EDDIES FIREPLACE INN DRINKING WATER PROTECTION AREA.....	2	VULNERABILITY OF EDDIES FIREPLACE INN DRINKING WATER SYSTEM.....	3

TABLES

Table 1. Definition of Zones.....	2
Table 2. Susceptibility.....	3
Table 3. Contaminant Risks.....	3
Table 4. Overall Vulnerability.....	4

APPENDICES

APPENDIX	A. Eddies Fireplace Inn Drinking Water Protection Area (Map A)
	B. Contaminant Source Inventory for Eddies Fireplace Inn (Table 1) Contaminant Source Inventory and Risk Ranking for Eddies Fireplace Inn – Bacteria and Viruses (Table 2) Contaminant Source Inventory and Risk Ranking for Eddies Fireplace Inn – Nitrates/Nitrites (Table 3) Contaminant Source Inventory and Risk Ranking for Eddies Fireplace Inn – Volatile Organic Chemicals (Table 4)
	C. Eddies Fireplace Inn Drinking Water Protection Area and Potential and Existing Contaminant Sources (Map C)
	D. Vulnerability Analysis for Contaminant Source Inventory and Risk Ranking for Eddies Fireplace Inn Public Drinking Water Source (Charts 1 – 8)

Source Water Assessment for Eddies Fireplace Inn Source of Public Drinking Water, King Salmon, Alaska

Drinking Water Protection Program Alaska Department of Environmental Conservation

EXECUTIVE SUMMARY

Eddies Fireplace Inn has one Public Water System (PWS) well. The well (PWSID# 261486.001) is said to have been drilled around 1953 and has presumably been used as a drinking water source since that time.

The well is a Class B (transient/non-community) water system located at #1 Main Street in King Salmon, Alaska. Available records indicate that there is a 70-gallon pressure tank, and that the untreated drinking water source is derived directly from the wellhead. The wellhead received a susceptibility rating of **Very High** and the aquifer received a susceptibility rating of **Very High**. Combining these two ratings produce a **Very High** rating for the natural susceptibility of the well. Identified potential and current sources of contaminants for the primary public drinking water source include: a gasoline station, injection wells, underground fuel tanks, aboveground fuel tanks, ADEC recognized contaminated sites and LUST sites, and roads. These identified potential and existing sources of contamination are considered as sources of bacteria and viruses, nitrates and/or nitrites, and volatile organic chemicals. Overall, the water well received a vulnerability rating of **Very High** for the bacteria and viruses, a vulnerability rating of **Very High** for nitrates and nitrites, and a vulnerability rating of **Very High** for volatile organic chemicals contaminant categories.

EDDIES FIREPLACE INN PUBLIC DRINKING WATER SYSTEM

The Eddies Fireplace Inn well is a Class B (transient/non-community) public water system. The well is located at #1 Main Street in King Salmon, Alaska (Sec. 23, T17S, R45W, Seward Meridian; see Map A of Appendix A). King Salmon is located on the north bank of the Naknek River near Bristol Bay. The village is located about 15 miles upriver from Naknek and 280 miles southwest of Anchorage. The community has a population of 392 (ADCED, 2003). Eddies Fireplace Inn has a non-resident population of approximately 64 people and a resident population of

one. Average annual precipitation in King Salmon is 20 inches, including approximately 45 inches of snowfall. Temperatures range from 42 to 63°F in summer and 29 to 44°F in winter. Temperatures can be as extreme as -46 to 88°F.

The community of King Salmon gets most of their water supply from individual wells. Most households are served by the piped sewage collection system and the remaining households have individual septic tanks (ADCED, 2003). King Salmon receives electrical power from the Naknek Electric Association operated by the REA Cooperative. Power generating facilities are fueled by diesel. Refuse is collected by the Peterson Sanitation Company and trucked to the landfill located at mile five of King Salmon-Naknek Road (ADCED, 2003).

Information obtained from a December 1998 sanitary survey for the public water system indicated that the depth of the primary water well is approximately 109 feet below the ground surface. Well construction details are unknown; however, based on surrounding wells, it is assumed the well is screened in an unconfined aquifer. Unconfined aquifers are likely more susceptible to groundwater impacts resulting from the downward migration of surface contaminants. The well is not located within a floodplain.

Information acquired from a December 1998 sanitary survey for the public water system indicated that the land surface was not sloped away from the well. Generally, land surfaces that slope away from the wellhead promote surface water drainage, which reduces potential of contaminant migration down the well casing annulus. Given the well construction date (1953), it is assumed the well is not grouted according to ADEC regulations. Proper grouting provides added protection against contaminants traveling along the well casing annulus and into source waters.

The entire Bristol Bay area was formerly covered by glaciers and the topography is representative of a postglacial area. Soils information is limited. Generally, the soils consist of silty sand overlying

relatively clean sand. The silty soils are slightly frost-susceptible. Isolated pockets of permafrost are scattered throughout the area (DOWL, 1982).

EDDIES FIREPLACE INN DRINKING WATER PROTECTION AREA

In order to evaluate whether a drinking water source is at risk, we must first evaluate what are the most likely pathways for surface contamination to reach the groundwater. These areas are determined by looking at the characteristics of the soil, groundwater, aquifer, and well.

The most probable area for contamination to reach the drinking water well is the area that contributes water to the well, the groundwater recharge area. This area is designated as the drinking water protection area (DWPA). Because releases of contaminants within the protection area are most likely to impact the drinking water well, this area will serve as the focus for voluntary protection efforts. An analytical calculation was used to determine the size and shape of the DWPA for the Eddies Fireplace Inn PWS. The input parameters describing the attributes of the aquifer in this calculation were adopted from Groundwater (Freeze and Cherry, 1979). Available geology and groundwater contours were also considered to take into account any uncertainties in groundwater flow and aquifer characteristics to arrive at a meaningful protection area.

The protection areas established for wells by the ADEC are usually separated into four zones, limited by the watershed. These zones correspond to differences in the time-of-travel (TOT) of the water moving through the aquifer to the well (Please refer to the Guidance Manual for Class B Public Water Systems for additional information).

The time of travel for contaminants within the water varies and is dependent on the physical and chemical characteristics of each contaminant. The following is a summary of the four protection area zones for wells and the calculated time-of-travel for each:

Table 1. Definition of Zones

Zone	Definition
A	¼ the distance for the 2-yr. time-of-travel
B	Less than the 2 year time-of-travel
C	Less Than the 5 year time-of-travel
D	Less than the 10 year time-of-travel

The DWPA for the Eddies Fireplace Inn PWS was determined using an analytical calculation and includes Zones A, B, C, and D (See Map A of Appendix A).

INVENTORY OF POTENTIAL AND EXISTING CONTAMINANT SOURCES

The Drinking Water Protection Program has completed an inventory of potential and existing sources of contamination within the Eddies Fireplace Inn DWPA. This inventory was completed through a search of agency records and other publicly available information. Potential sources of contamination to the drinking water aquifer include a wide range of categories and types. Potential drinking water contaminants are found within agricultural, residential, commercial, and industrial areas, but can also occur within areas that have little or no development.

For the basis of all Class B public water system assessments, three categories of drinking water contaminants were inventoried. They include:

- Bacteria and viruses,
- Nitrates and/or nitrites,
- Volatile organic chemicals.

The sources are displayed on Map C of Appendix C and summarized in Table 1 of Appendix B.

RANKING OF CONTAMINANT RISKS

Once the potential and existing sources of contamination have been identified, they are assigned a ranking according to what type and level of risk they represent. Ranking of contaminant risks for a “potential” or “existing” source of contamination is a function of toxicity and volumes of specific contaminants associated with that source. Rankings include:

- Low,
- Medium,
- High, and
- Very High.

The time-of-travel for contaminants within the water varies and is dependent on the physical and chemical characteristics of each contaminant. Bacteria and Viruses are only inventoried in Zones A and B because of their short life span. Only “Very High” and “High” rankings are inventoried within the outer Zone D due to the probability of contaminant dilution by the time the contaminants get to the well.

Tables 2 through 4 in Appendix B contain the ranking of potential and existing sources of contamination with respect to bacteria and viruses, nitrates and/or nitrites, and volatile organic chemicals.

VULNERABILITY OF EDDIES FIREPLACE INN DRINKING WATER SYSTEM

Vulnerability of a drinking water source to contamination is a combination of two factors:

- Natural susceptibility, and
- Contaminant risks.

Appendix D contains eight charts, which together form the ‘Vulnerability Analysis’ for a source water assessment for a public drinking water source. Chart 1 analyzes the ‘Susceptibility of the Wellhead’ to contamination by looking at the construction of the well and its surrounding area. Chart 2 analyzes the ‘Susceptibility of the Aquifer’ to contamination by looking at the naturally occurring attributes of the water source and influences on the groundwater system that might lead to contamination. Chart 3 analyzes ‘Contaminant Risks’ for the drinking water source with respect to bacteria and viruses. The ‘Contaminant Risks’ portion of the analysis considers potential sources of contaminants as well as a review of contamination that has or may have occurred, but has not arrived or been detected at the well. Lastly, Chart 4 contains the ‘Vulnerability Analysis for Bacteria and Viruses’. Charts 5 through 8 contain the Contaminant Risks and Vulnerability Analyses for nitrates and nitrites and volatile organic chemicals, respectively.

A score for the Natural Susceptibility is reached by considering the properties of the well and the aquifer.

Susceptibility of the Wellhead (0 – 25 Points)
(Chart 1 of Appendix D)

+

Susceptibility of the Aquifer (0 – 25 Points)
(Chart 2 of Appendix D)

=

Natural Susceptibility (Susceptibility of the Well)
(0 – 50 Points)

A ranking is assigned for the Natural Susceptibility according to the point score:

Natural Susceptibility Ratings	
40 to 50 pts	Very High
30 to < 40 pts	High
20 to < 30 pts	Medium
< 20 pts	Low

The Eddies Fireplace Inn water well is in an unconfined aquifer. Unconfined aquifers are more susceptible to potential groundwater quality impacts posed by the migration of surface water contaminants downward from the surface. Table 2 shows the susceptibility scores and ratings for this PWS.

Table 2. Susceptibility

	Score	Rating
Susceptibility of the Wellhead	25	Very High
Susceptibility of the Aquifer	25	Very High
Natural Susceptibility	50	Very High

Contaminant risks to a drinking water source depend on the type, number or density, and distribution of contaminant sources. This score has been derived from an examination of existing and historical contamination that has been detected at the drinking water source through routine sampling. It also evaluates potential sources of contamination. Flow charts are used to assign a point score, and ratings are assigned in the same way as for the natural susceptibility:

Contaminant Risk Ratings	
40 to 50 pts	Very High
30 to < 40 pts	High
20 to < 30 pts	Medium
< 20 pts	Low

Table 3 summarizes the Contaminant Risks for each category of drinking water contaminants.

Table 3. Contaminant Risks

Category	Score	Rating
Bacteria and Viruses	50	Very High
Nitrates and/or Nitrites	50	Very High
Volatile Organic Chemicals	50	Very High

Finally, an overall vulnerability score is assigned for each water system by combining each of the contaminant risk scores with the natural susceptibility score:

$$\begin{array}{r}
 \text{Natural Susceptibility (0 – 50 points)} \\
 + \\
 \text{Contaminant Risks (0 – 50 points)} \\
 = \\
 \text{Vulnerability of the} \\
 \text{Drinking Water Source to Contamination (0 – 100).}
 \end{array}$$

Again, rankings are assigned according to a point score:

Overall Vulnerability Ratings	
80 to 100 pts	Very High
60 to < 80 pts	High
40 to < 60 pts	Medium
< 40 pts	Low

Table 4 contains the overall vulnerability scores (0 – 100) and ratings for each of the three categories of drinking water contaminants. Note: scores are rounded off to the nearest five.

Table 4. Overall Vulnerability

Category	Score	Rating
Bacteria and Viruses	100	Very High
Nitrates and Nitrites	100	Very High
Volatile Organic Chemicals	100	Very High

Bacteria and Viruses

The contaminant risk for bacteria and viruses is **Very High**. The risk is primarily attributed to the presence of two injection wells in Zones A and B (see Table 2 – Appendix B).

No positive bacteria counts have been reported in recent (within five years) sampling events (See Chart 3 – Contaminant Risks for Bacteria and Viruses in Appendix D). Only a small amount of bacteria and viruses are required to endanger public health.

After combining the contaminant risk for bacteria and viruses with the natural susceptibility of the well, the overall vulnerability of the well to contamination is **Very High**.

Nitrates and Nitrites

The contaminant risk for nitrates and nitrites is **Very High**. The risk to this source of public drinking water is primarily attributed to the presence of two injection wells in Zones A and B (see Table 3 –

Appendix B).

Nitrates are very mobile, moving at approximately the same rate as water. The sampling history for this well indicates that nitrates have not been detected in recent sampling events. Nitrate concentrations in uncontaminated groundwater are typically less than 2 mg/L; therefore, nitrate concentrations above 2 mg/L may be indicative of man-made sources (See Chart 5 - Contaminant Risks for Nitrates and/or Nitrites in Appendix D).

Nitrate levels are often derived from the decomposition of organic matter in soils. After combining the contaminant risk for nitrates and nitrites with the natural susceptibility of the well, the overall vulnerability of the well to nitrate and nitrite contamination is **Very High**.

Volatile Organic Chemicals

The contaminant risk for volatile organic chemicals is **Very High**. The risk is primarily attributed to the presence of a gasoline station, underground fuel storage tanks, and ADEC recognized contaminated sites located in Zones A, B, and C. Numerous other potential contaminant sources are also found within the protection area (see Table 4 – Appendix B).

No recent sampling data was available in ADEC records for Eddies Fireplace Inn (See Chart 7 – Contaminant Risks for Volatile Organic Chemicals in Appendix D).

After combining the contaminant risk for volatile organic chemicals with the natural susceptibility of the well, the overall vulnerability of the well to contamination is **Very High**.

Using the Source Water Assessment

This assessment of contaminant risks can be used as a foundation for local voluntary protection efforts as well as a basis for the continuous efforts on the part of Eddies Fireplace Inn and the community of King Salmon to protect public health. It is anticipated that Source Water Assessments will be updated every five years to reflect any changes in the vulnerability and/or susceptibility of the drinking water source.

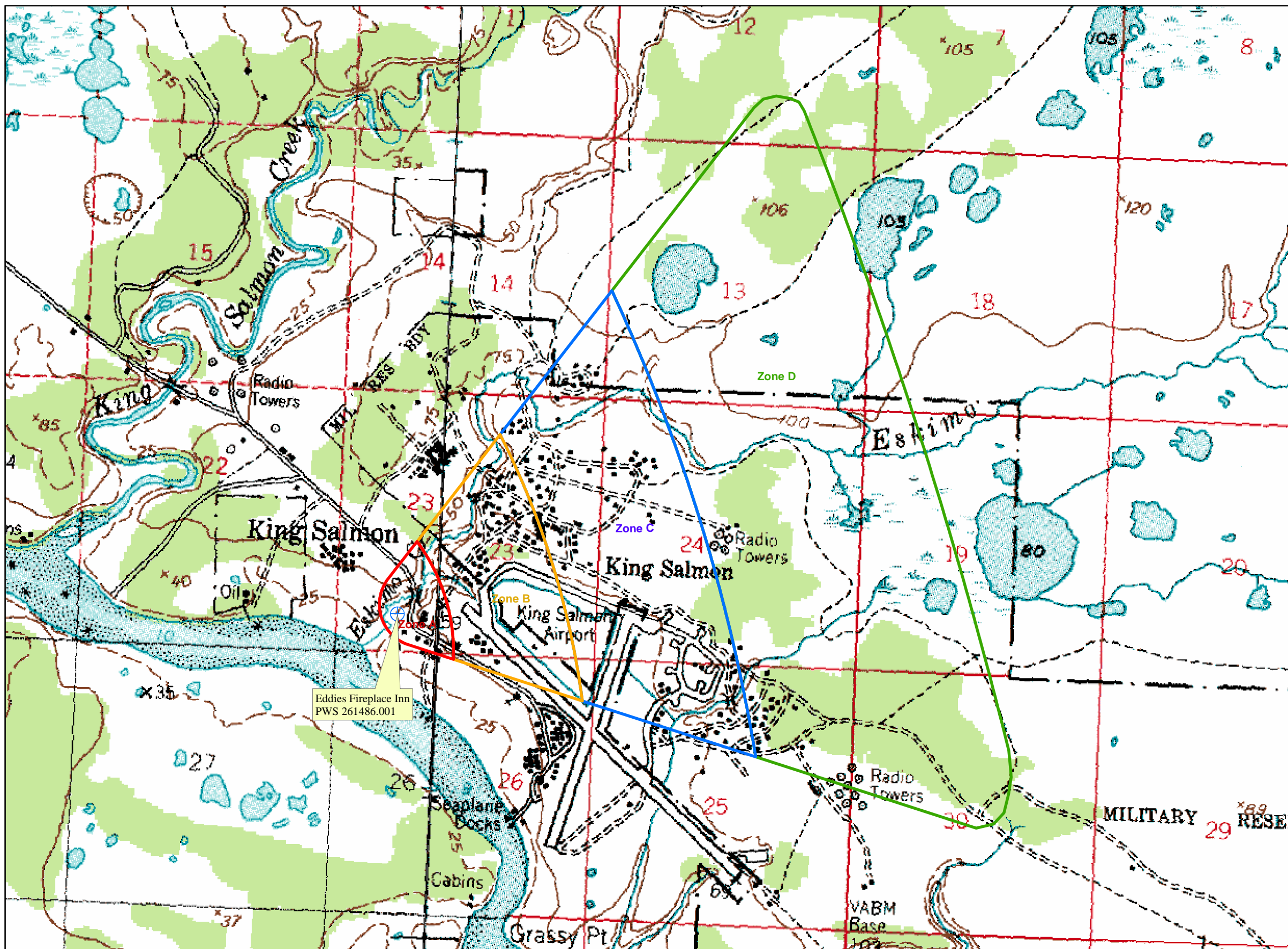
REFERENCES

- Alaska Department of Community and Economic Development (ADCED), 2003 [WWW document]. URL: http://www.dced.state.ak.us/cbd/commdb/CF_COMDB.htm
- Alaska Department of Environmental Conservation, Contaminated Sites Database, 2003 [WWW database], URL http://www.state.ak.us/dec/dspar/csites/cs_search.htm
- Alaska Department of Environmental Conservation, Leaking Underground Storage Tank Database, 2003 [WWW database], URL http://www.dec.state.ak.us/spar/stp/ust/search/fac_search.asp
- DOWL Engineers (DOWL), 1982, Upper Bristol Bay Region Community Planning Profiles.
- Freeze, R. A., and Cherry, J.A. 1979, Groundwater, Prentice-Hall, Englewood Cliffs, New Jersey
- United States Environmental Protection Agency (EPA), 2002 [WWW document]. URL <http://www.epa.gov/safewater/mcl.html>.

APPENDIX A

Drinking Water Protection Area Location Map (Map A)

Public Water Well System for PWS #261486.001 Eddies Fireplace Inn



LEGEND

- Public Water System Well
- Hydrography/Physical**
 - Parcels
 - Stream
 - Lake or Pond
 - Contours
- Transportation**
 - Primary Route (Class 1)
 - Secondary Route (Class 2)
 - Road (Class 3)
 - Road (Class 4)
 - Road (Class 5, Four-wheel drive)
 - Road Ferry Crossing
- Groundwater Protection Zones**
 - Zone A Protection Area— Several Months Travel Time
 - Zone B Protection Area— 2 Years Travel Time
 - Zone C Protection Area— 5 Years Travel Time
 - Zone D Protection Area— 10 Years Travel Time

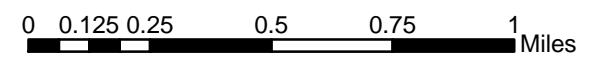
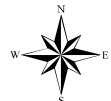
Data Sources:
 Contaminant Sources, Public Water System Wells, Contours
 Alaska Department of Environmental Conservation (ADEC)

Critical Facilities, Federal Emergency Management Agency (FEMA)

All other data:
 United States Geological Survey (USGS)

Drinking Water Protection Areas based on "Alaska Drinking Water Protection Program - Guidance Manual for Class B Public Water Systems" published by ADEC

URS Corporation does not guarantee the accuracy or validity of the data provided.



APPENDIX B

Contaminant Source Inventory and Risk Rankings (Tables 1-4)

Table 1

**Contaminant Source Inventory for
Eddie's Fireplace Inn**

PWSID 261486.00.

Contaminant Source Type	Contaminant Source ID	CS ID tag	Zone	Map Number	Comments
Gasoline stations (without repair shop)	C15	C15-01	A	C	Gasoline fuel dispensers based on 1998 water system inventory
Injection wells (Class V) Large-Capacity Septic System (Drainfield Disposal Method)	D10	D10-01	A	C	
Tanks, gasoline (above ground)	T10	T10-01	A	C	One gasoline AST based on 1998 water system inventory
Tanks, heating oil, nonresidential (aboveground)	T14	T14-01	A	C	One of three heating oil ASTs located at site according to 1998 water system inventory.
Tanks, heating oil, nonresidential (aboveground)	T14	T14-02	A	C	Two of three heating oil ASTs located at site according to 1998 water system inventory.
Tanks, heating oil, nonresidential (aboveground)	T14	T14-03	A	C	Three of three heating oil ASTs located at site according to 1998 water system inventory.
Highways and roads, dirt/gravel	X24	X24-01	A	C	Assumed to be 1 to 20 roads located in Zone A
Injection wells (Class V) Large-Capacity Septic System (Drainfield Disposal Method)	D10	D10-01	B	C	
Residential Areas	R01	R01-01	B	C	Assumed to be 50 or less acres of residential area in Zone B
Tanks, heating oil, residential (above ground)	R08	R08-01	B	C	Assumed to be 10 or less residential heating oil tanks in Zone B
Tanks, diesel (underground)	T08	T08-01	B	C	Diesel
Tanks, diesel (underground)	T08	T08-02	B	C	Diesel
Tanks, diesel (underground)	T08	T08-03	B	C	Diesel
Tanks, diesel (underground)	T08	T08-04	B	C	Diesel
Tanks, gasoline (underground)	T12	T12-01	B	C	Gasoline
Tanks, gasoline (underground)	T12	T12-02	B	C	Gasoline
Tanks, gasoline (underground)	T12	T12-03	B	C	Gasoline
Open Leaking Underground Fuel Storage Tank (LUST) Sites	U07	U07-01	B	C	FAA King Salmon. ADEC RecKey#1993250022551. Release of gasoline and diesel fuel documented during the removal of six underground storage tanks.
Highways and roads, dirt/gravel	X24	X24-02	B	C	Assumed to be 1 to 20 roads located in Zone B
Contaminated sites, DEC recognized, non-Superfund, non-RCRA	U04	U04-01	C	C	Eskimo Creek - Eddie's Fireplace Inn. ADEC RecKey#1994250122801. Site is active with high priority. Groundwater impacted with petroleum hydrocarbons.

<i>Contaminant Source Type</i>	<i>Contaminant Source ID</i>	<i>CS ID tag</i>	<i>Zone</i>	<i>Map Number</i>	<i>Comments</i>
Contaminated sites, DEC recognized, non-Superfund, non-RCRA	U04	U04-02	C	C	King Salmon ASOT028 GW Zone 2. ADEC RecKey#199625X928902. S is active with unranked priority. Groundwater is contaminated with hydrocarbons and solvents.
Highways and roads, dirt/gravel	X24	X24-03	C	C	Assumed to be 1 to 20 roads located in Zone C

Table 2

*Contaminant Source Inventory and Risk Ranking for
Eddies Fireplace Inn
Sources of Bacteria and Viruses*

PWSID 261486.001

<i>Contaminant Source Type</i>	<i>Contaminant Source ID</i>	<i>CS ID tag</i>	<i>Zone</i>	<i>Risk Ranking for Analysis</i>	<i>Map Number</i>	<i>Comments</i>
Injection wells (Class V) Large-Capacity Septic System (Drainfield Disposal Method)	D10	D10-01	A	High	C	
Highways and roads, dirt/gravel	X24	X24-01	A	Low	C	Assumed to be 1 to 20 roads located in Zone A
Injection wells (Class V) Large-Capacity Septic System (Drainfield Disposal Method)	D10	D10-01	B	High	C	
Residential Areas	R01	R01-01	B	Low	C	Assumed to be 50 or less acres of residential area in Zone B
Highways and roads, dirt/gravel	X24	X24-02	B	Low	C	Assumed to be 1 to 20 roads located in Zone B

Table 3

*Contaminant Source Inventory and Risk Ranking for
Eddies Fireplace Inn
Sources of Nitrates/Nitrites*

PWSID 261486.001

<i>Contaminant Source Type</i>	<i>Contaminant Source ID</i>	<i>CS ID tag</i>	<i>Zone</i>	<i>Risk Ranking for Analysis</i>	<i>Map Number</i>	<i>Comments</i>
Injection wells (Class V) Large-Capacity Septic System (Drainfield Disposal Method)	D10	D10-01	A	High	C	
Highways and roads, dirt/gravel	X24	X24-01	A	Low	C	Assumed to be 1 to 20 roads located in Zone A
Injection wells (Class V) Large-Capacity Septic System (Drainfield Disposal Method)	D10	D10-01	B	High	C	
Residential Areas	R01	R01-01	B	Low	C	Assumed to be 50 or less acres of residential area in Zone B
Highways and roads, dirt/gravel	X24	X24-02	B	Low	C	Assumed to be 1 to 20 roads located in Zone B
Highways and roads, dirt/gravel	X24	X24-03	C	Low	C	Assumed to be 1 to 20 roads located in Zone C

Table 4

*Contaminant Source Inventory and Risk Ranking for
Eddie's Fireplace Inn
Sources of Volatile Organic Chemicals*

PWSID 261486.001

<i>Contaminant Source Type</i>	<i>Contaminant Source ID</i>	<i>CS ID tag</i>	<i>Zone</i>	<i>Risk Ranking for Analysis</i>	<i>Map Number</i>	<i>Comments</i>
Gasoline stations (without repair shop)	C15	C15-01	A	High	C	Gasoline fuel dispensers based on 1998 water system inventory
Injection wells (Class V) Large-Capacity Septic System (Drainfield Disposal Method)	D10	D10-01	A	Low	C	
Tanks, gasoline (above ground)	T10	T10-01	A	Medium	C	One gasoline AST based on 1998 water system inventory
Tanks, heating oil, nonresidential (aboveground)	T14	T14-01	A	Low	C	One of three heating oil ASTs located at site according to 1998 water system inventory.
Tanks, heating oil, nonresidential (aboveground)	T14	T14-02	A	Low	C	Two of three heating oil ASTs located at site according to 1998 water system inventory.
Tanks, heating oil, nonresidential (aboveground)	T14	T14-03	A	Low	C	Three of three heating oil ASTs located at site according to 1998 water system inventory.
Highways and roads, dirt/gravel	X24	X24-01	A	Low	C	Assumed to be 1 to 20 roads located in Zone A
Injection wells (Class V) Large-Capacity Septic System (Drainfield Disposal Method)	D10	D10-01	B	Low	C	
Residential Areas	R01	R01-01	B	Low	C	Assumed to be 50 or less acres of residential area in Zone B
Tanks, heating oil, residential (above ground)	R08	R08-01	B	Medium	C	Assumed to be 10 or less residential heating oil tanks in Zone B
Tanks, diesel (underground)	T08	T08-01	B	High	C	Diesel
Tanks, diesel (underground)	T08	T08-02	B	High	C	Diesel
Tanks, diesel (underground)	T08	T08-03	B	High	C	Diesel
Tanks, diesel (underground)	T08	T08-04	B	High	C	Diesel
Tanks, gasoline (underground)	T12	T12-01	B	High	C	Gasoline
Tanks, gasoline (underground)	T12	T12-02	B	High	C	Gasoline
Tanks, gasoline (underground)	T12	T12-03	B	High	C	Gasoline
Open Leaking Underground Fuel Storage Tank (LUST) Sites	U07	U07-01	B	High	C	FAA King Salmon. ADEC RecKey#1993250022551. Release of gasoline and diesel fuel documented during the removal of six underground storage tanks
Highways and roads, dirt/gravel	X24	X24-02	B	Low	C	Assumed to be 1 to 20 roads located in Zone B
Contaminated sites, DEC recognized, non-Superfund non-RCRA	U04	U04-01	C	High	C	Eskimo Creek - Eddie's Fireplace Inn. ADEC RecKey#1994250122801. Site active with high priority. Groundwater impacted with petroleum hydrocarbons

Table 4 (continued)

Contaminant Source Inventory and Risk Ranking for
Eddies Fireplace Inn
Sources of Volatile Organic Chemicals

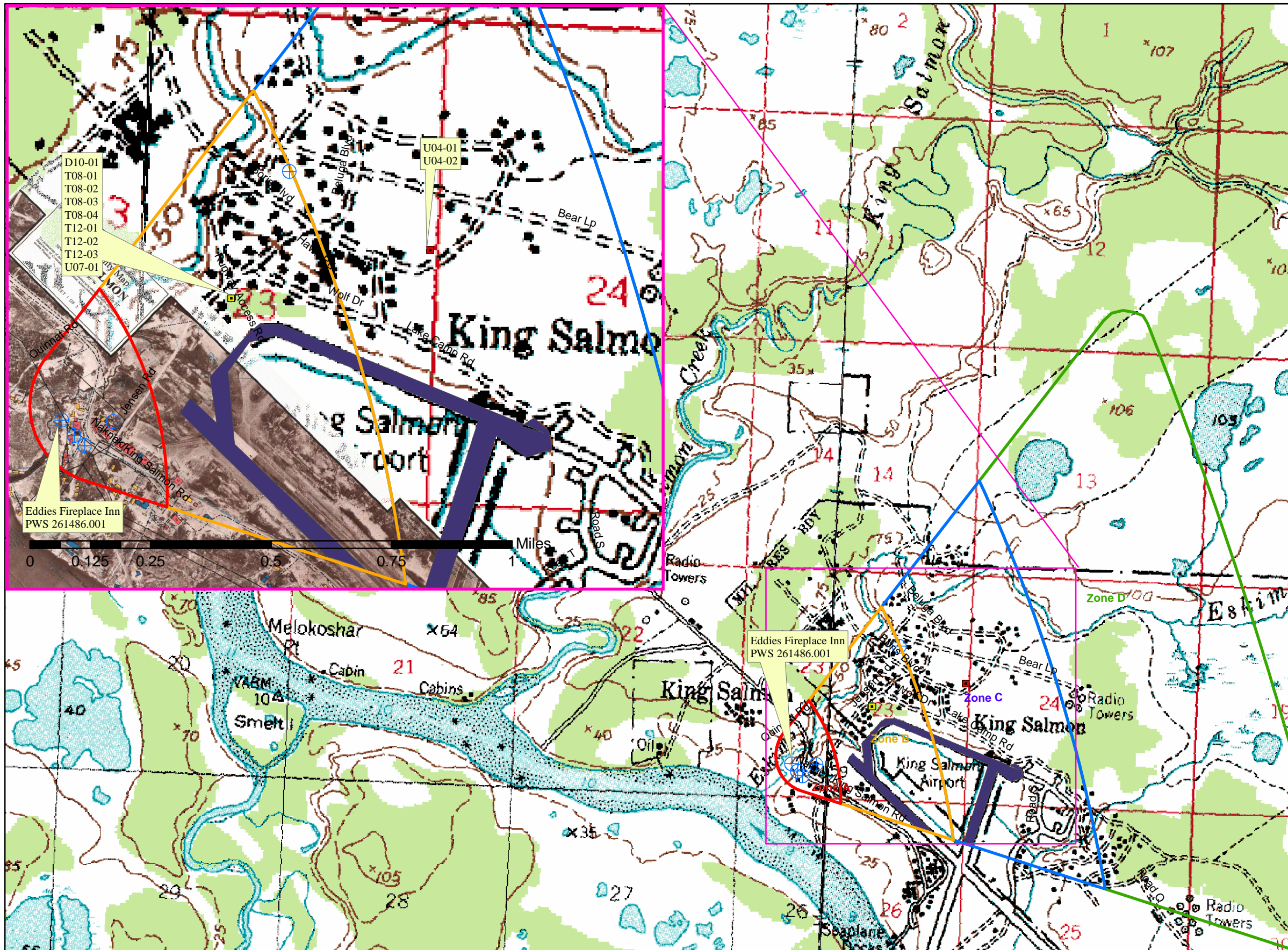
PWSID 261486.001

<i>Contaminant Source Type</i>	<i>Contaminant Source ID</i>	<i>CS ID tag</i>	<i>Zone</i>	<i>Risk Ranking for Analysis</i>	<i>Map Number</i>	<i>Comments</i>
Contaminated sites, DEC recognized, non-Superfund non-RCRA	U04	U04-02	C	High	C	King Salmon ASOT028 GW Zone 2. ADEC RecKey#199625X928902. Site active with unranked priority. Groundwater is contaminated with hydrocarbons and solvents.
Highways and roads, dirt/gravel	X24	X24-03	C	Low	C	Assumed to be 1 to 20 roads located in Zone C

APPENDIX C

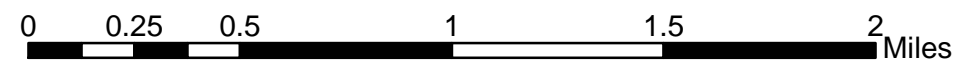
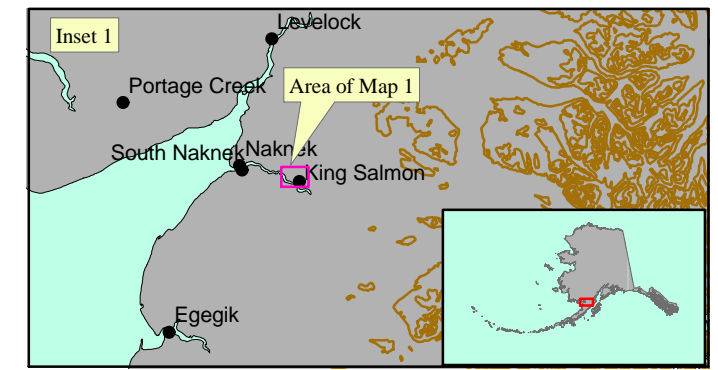
Drinking Water Protection Area and Potential and Existing Contaminant Sources (Map C)

**Public Water Well System for PWS #261486.001 Eddies Fireplace Inn
Showing Potential and Existing Sources of Contamination**



LEGEND

- Public Water System Well
 - Hydrography/Physical**
 - Parcels
 - Stream
 - Lake or Pond
 - Contours
 - Transportation**
 - Primary Route (Class 1)
 - Secondary Route (Class 2)
 - Road (Class 3)
 - Road (Class 4)
 - Road (Class 5, Four-wheel drive)
 - Road Ferry Crossing
 - Groundwater Protection Zones**
 - Zone A Protection Area— Several Months Travel Time
 - Zone B Protection Area— 2 Years Travel Time
 - Zone C Protection Area— 5 Years Travel Time
 - Zone D Protection Area— 10 Years Travel Time
 - Existing or Potential Contaminant Sources**
 - Injection Wells (Class V) Large-Capacity Septic System (D10)
 - Tanks Diesel (underground) (T08)
 - Tanks Gasoline (underground) (T12)
 - Contaminated Sites, DEC Recognized, non-Superfund, non-RCRA (U04)
 - Open Leaking Underground Fuel Storage Tank (LUST) (U07)
 - Airports/Landing Strips (X14)
- Data Sources:**
Contaminant Sources, Public Water System Wells, Contours
Alaska Department of Environmental Conservation (ADEC)
- Critical Facilities, Federal Emergency Management Agency (FEMA)**
- All other data:**
United States Geological Survey (USGS)
- Drinking Water Protection Areas based on "Alaska Drinking Water Protection Program - Guidance Manual for Class B Public Water Systems" published by ADEC**
- URS Corporation does not guarantee the accuracy or validity of the data provided.



APPENDIX D

Vulnerability Analysis for Public Drinking Water Source (Charts 1-8)

Chart 1. Susceptibility of the wellhead - Eddies Fireplace Inn (PWS No. 261486.001)

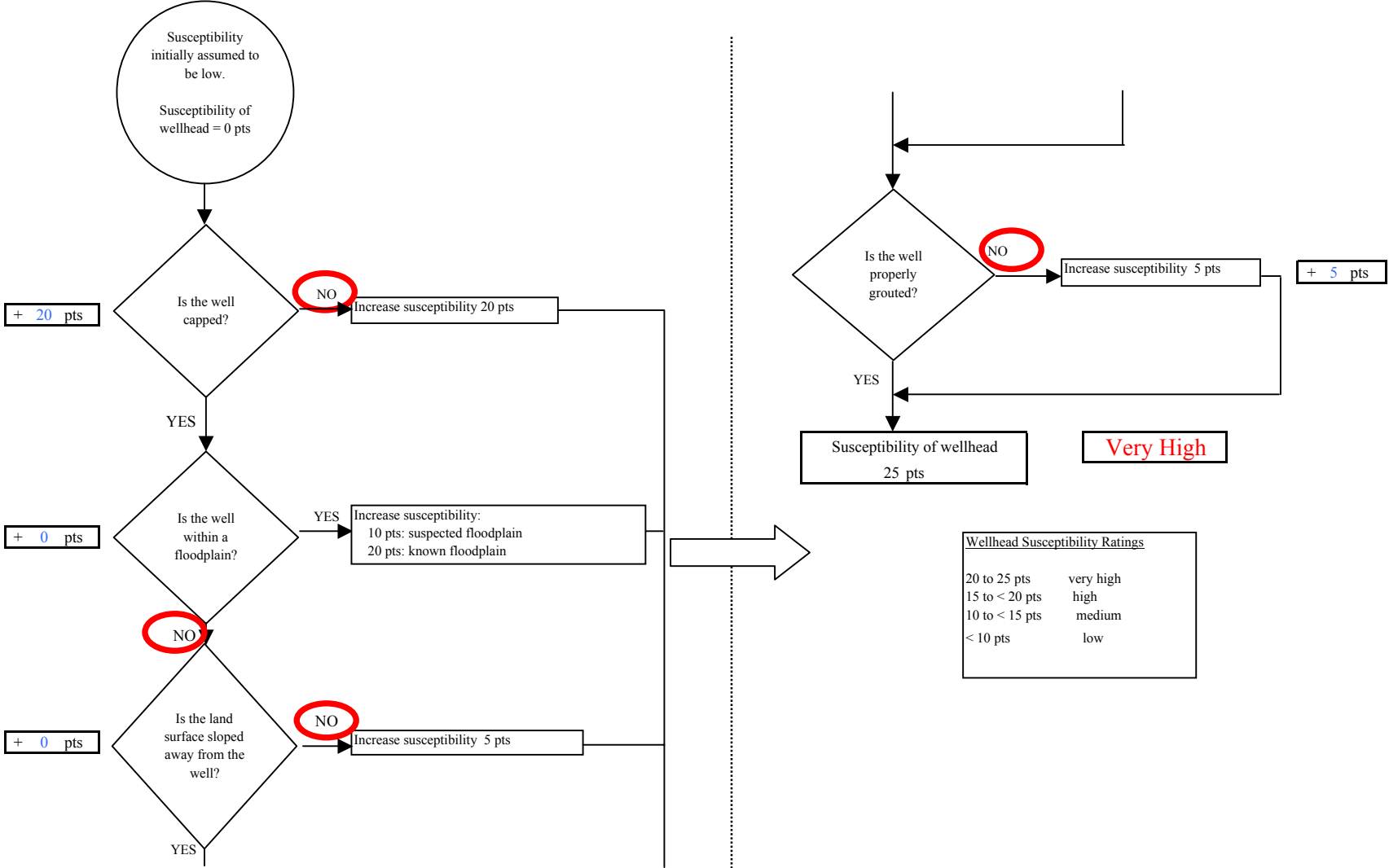


Chart 2. Susceptibility of the aquifer Eddies Fireplace Inn (PWS No. 261486.001)

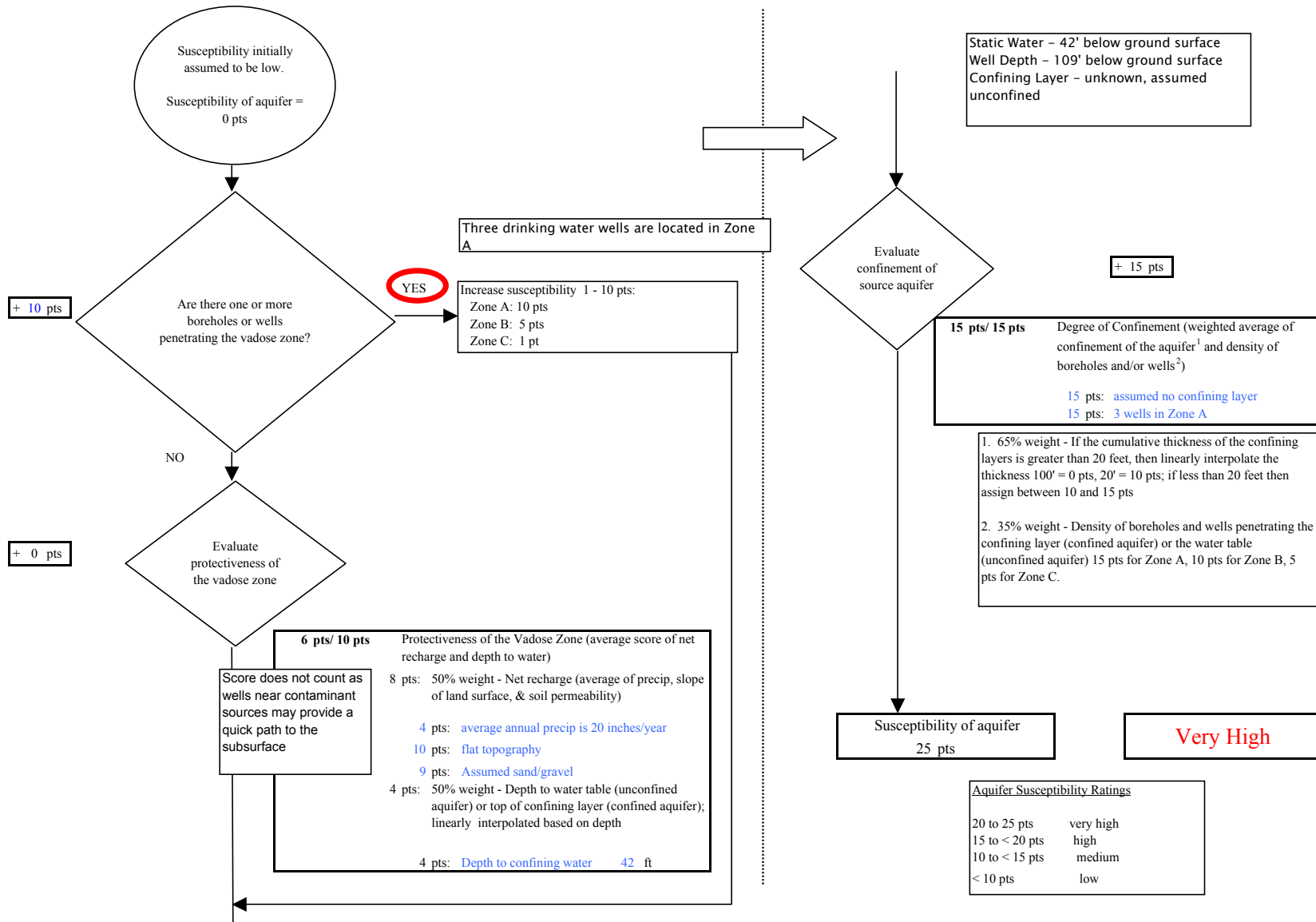


Chart 3. Contaminant risks for Eddies Fireplace Inn (PWS No. 261486.001) - Bacteria & Viruses

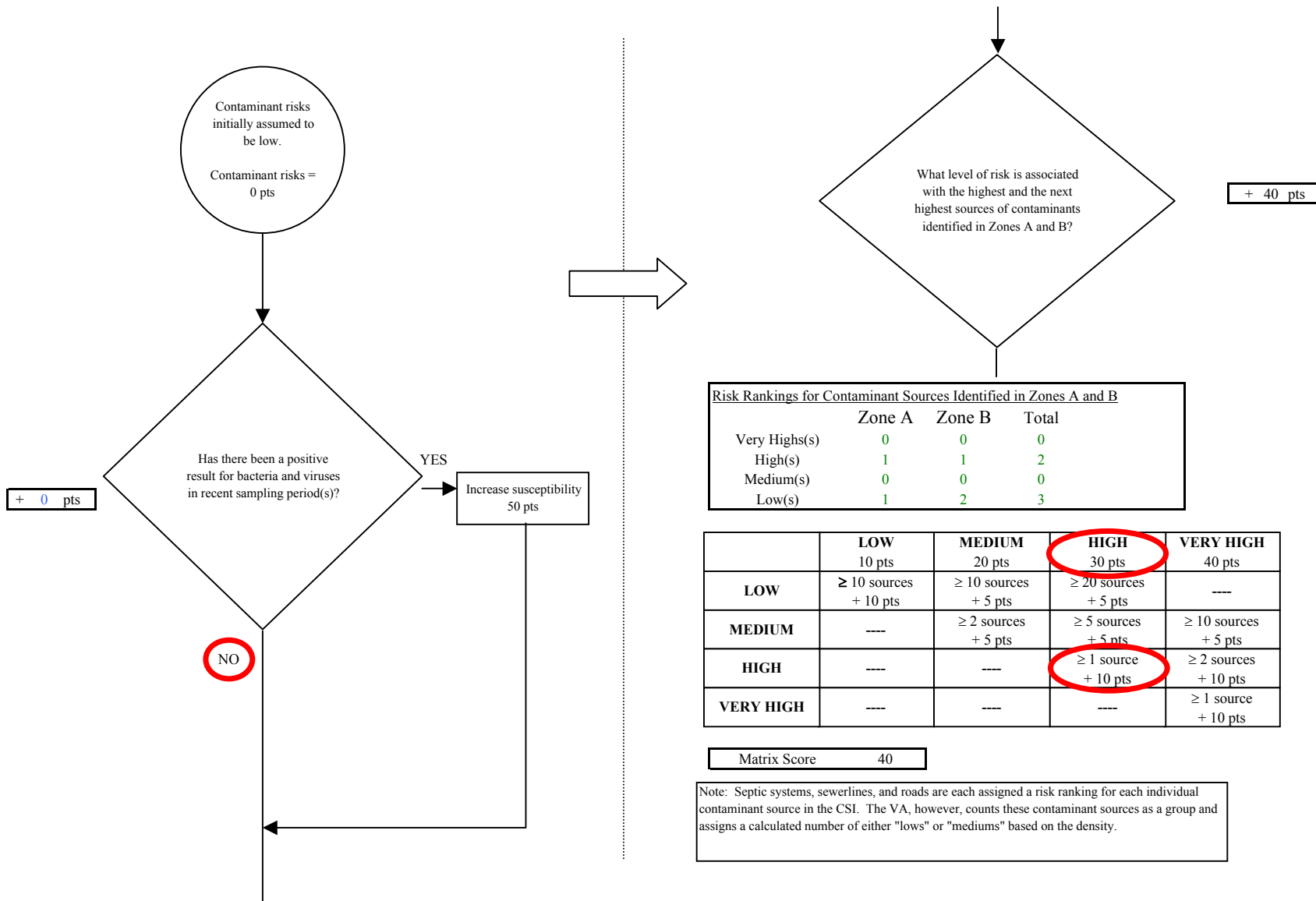


Chart 3. Contaminant risks for Eddies Fireplace Inn (PWS No. 261486.001) - Bacteria & Viruses

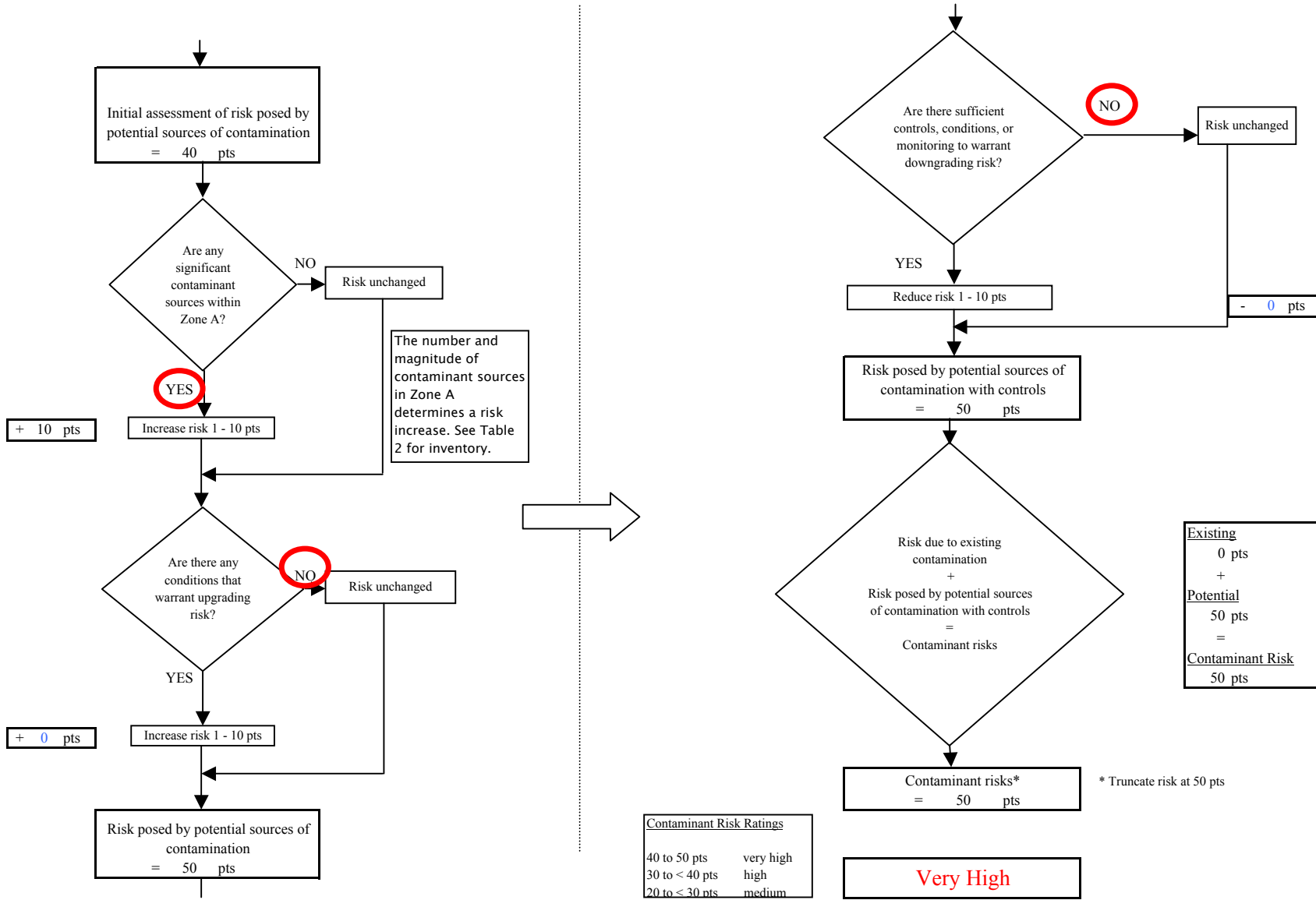


Chart 4. Vulnerability analysis for Eddies Fireplace Inn (PWS No. 261486.001) - Bacteria & Viruses

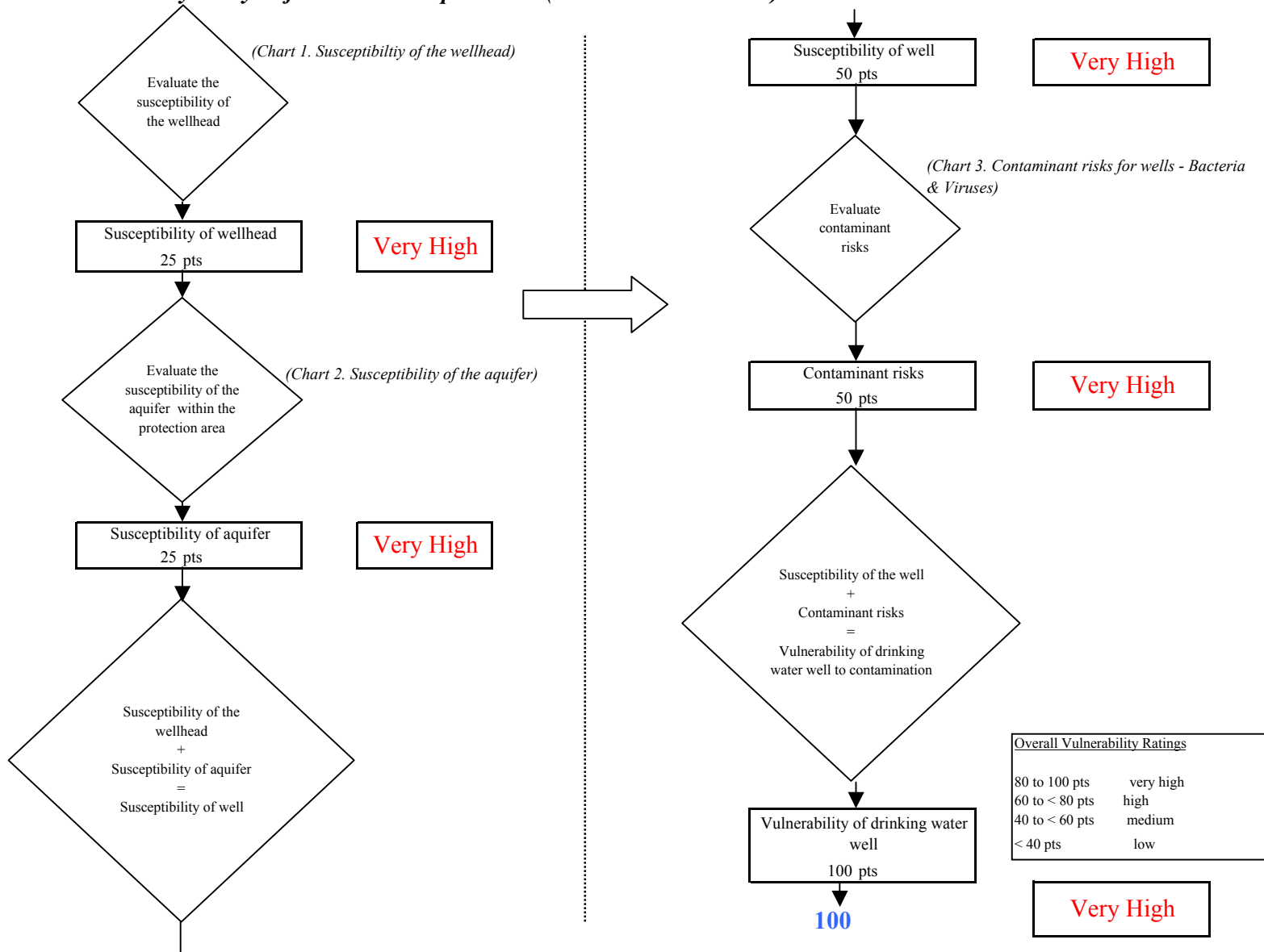


Chart 5. Contaminant risks for Eddies Fireplace Inn (PWS No. 261486.001) - Nitrates and Nitrites

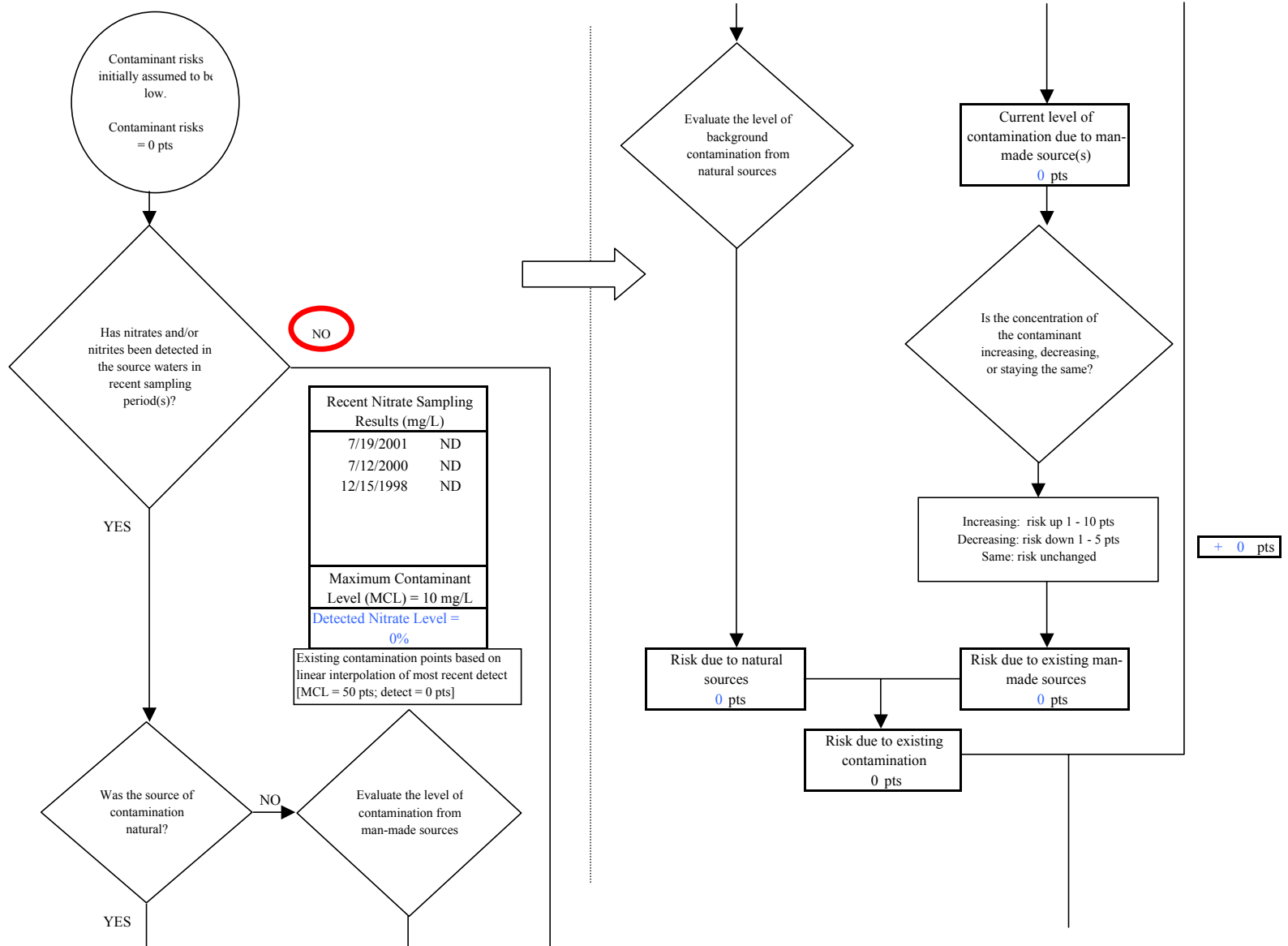


Chart 5. Contaminant risks for Eddies Fireplace Inn (PWS No. 261486.001) - Nitrates and Nitrites

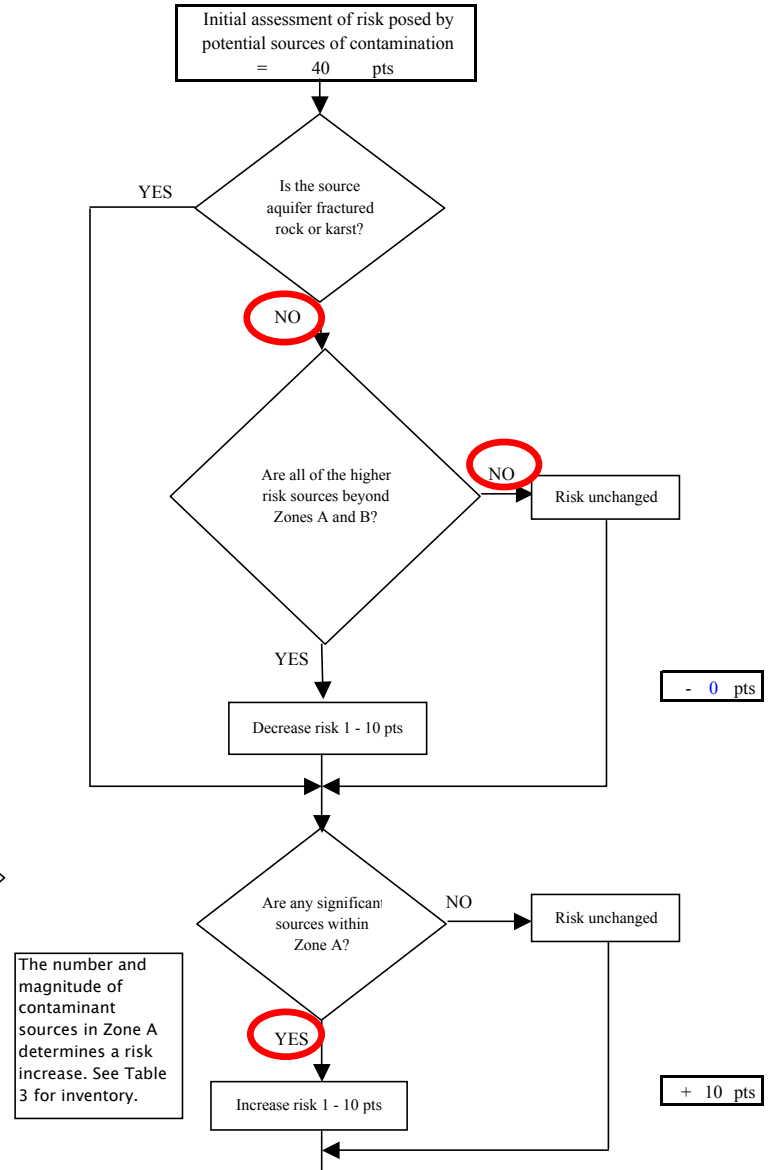
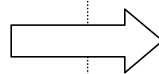
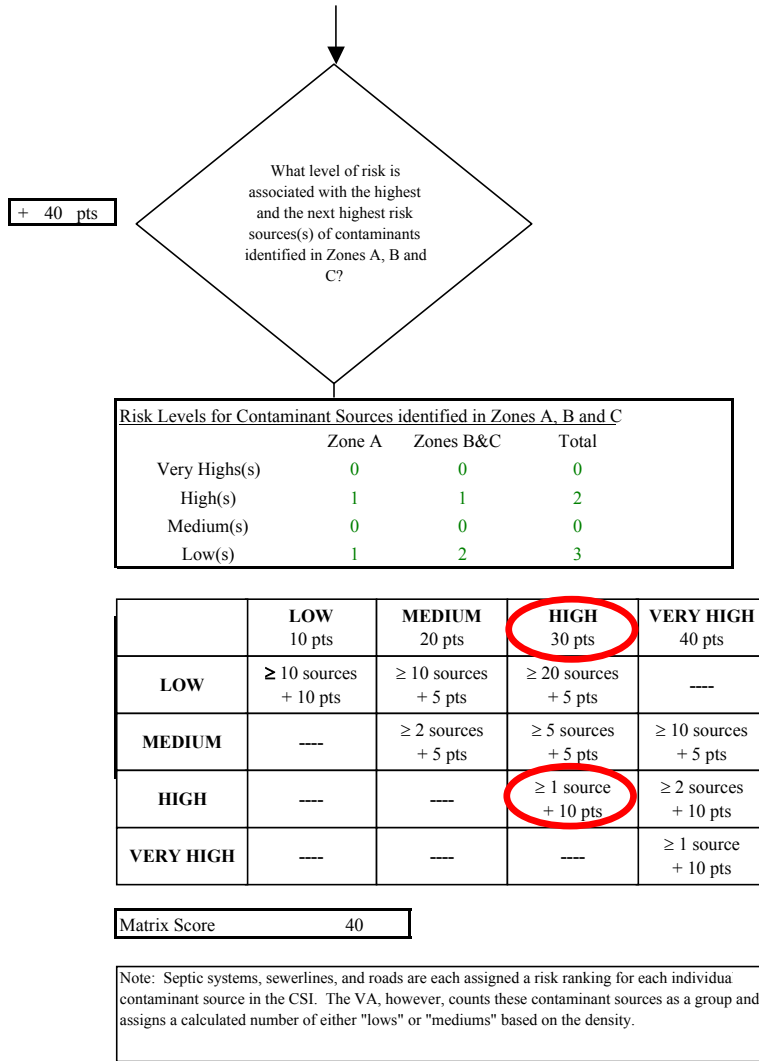


Chart 5. Contaminant risks for Eddies Fireplace Inn (PWS No. 261486.001) - Nitrates and Nitrites

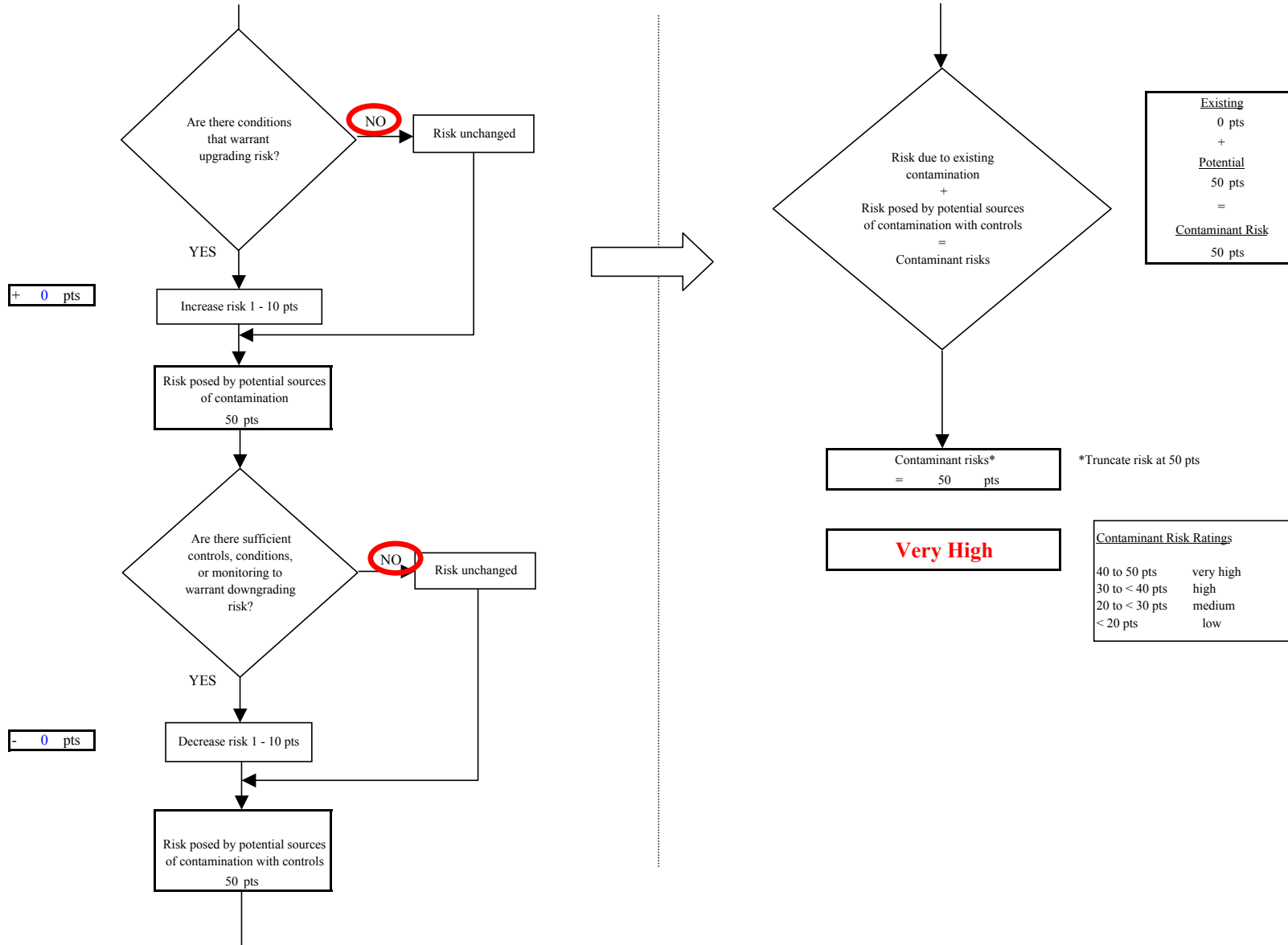


Chart 6. Vulnerability analysis for Eddies Fireplace Inn (PWS No. 261486.001) - Nitrates and Nitrites

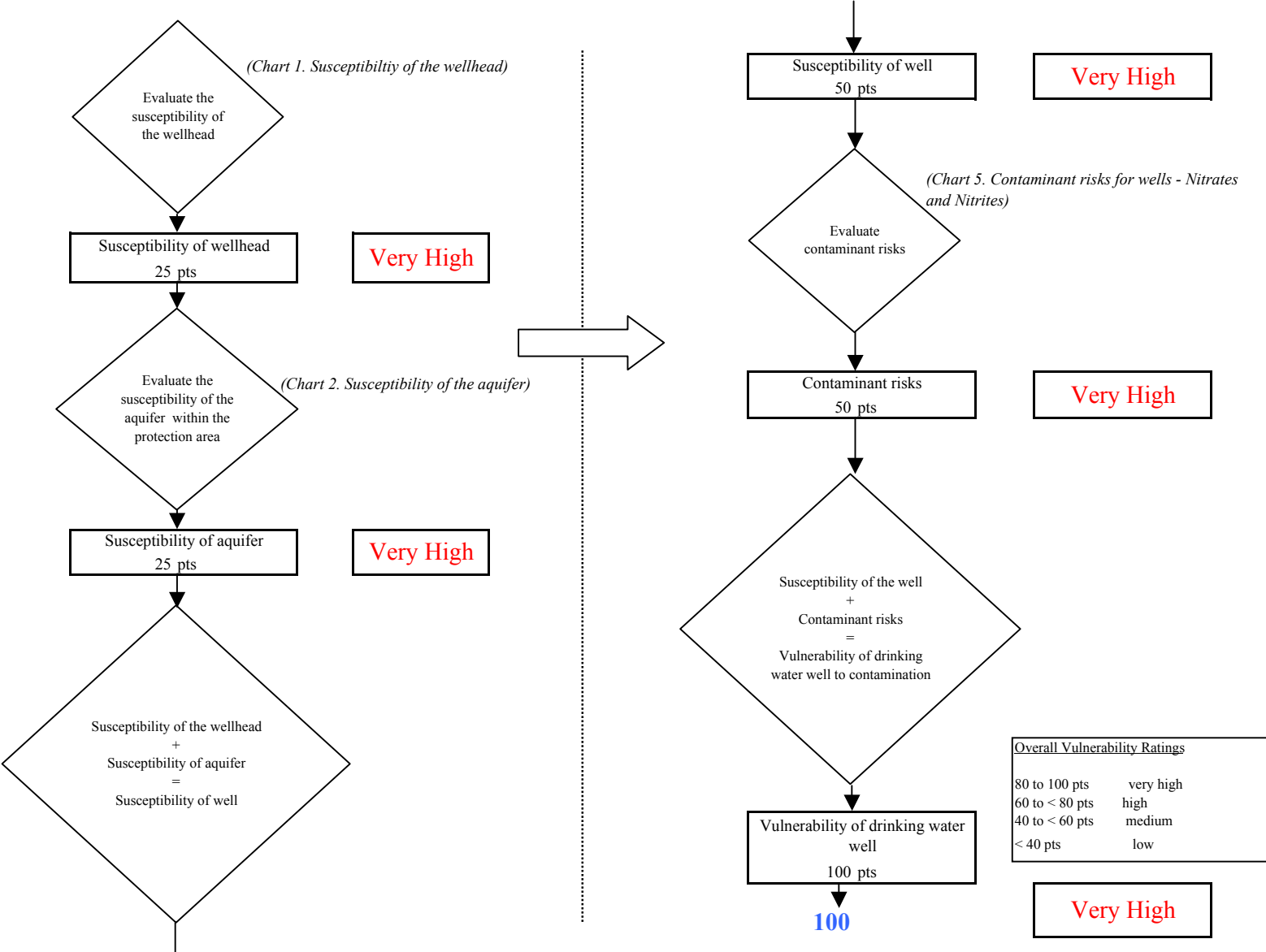


Chart 7. Contaminant risks for Eddies Fireplace Inn (PWS No. 261486.001) - Volatile Organic Chemicals

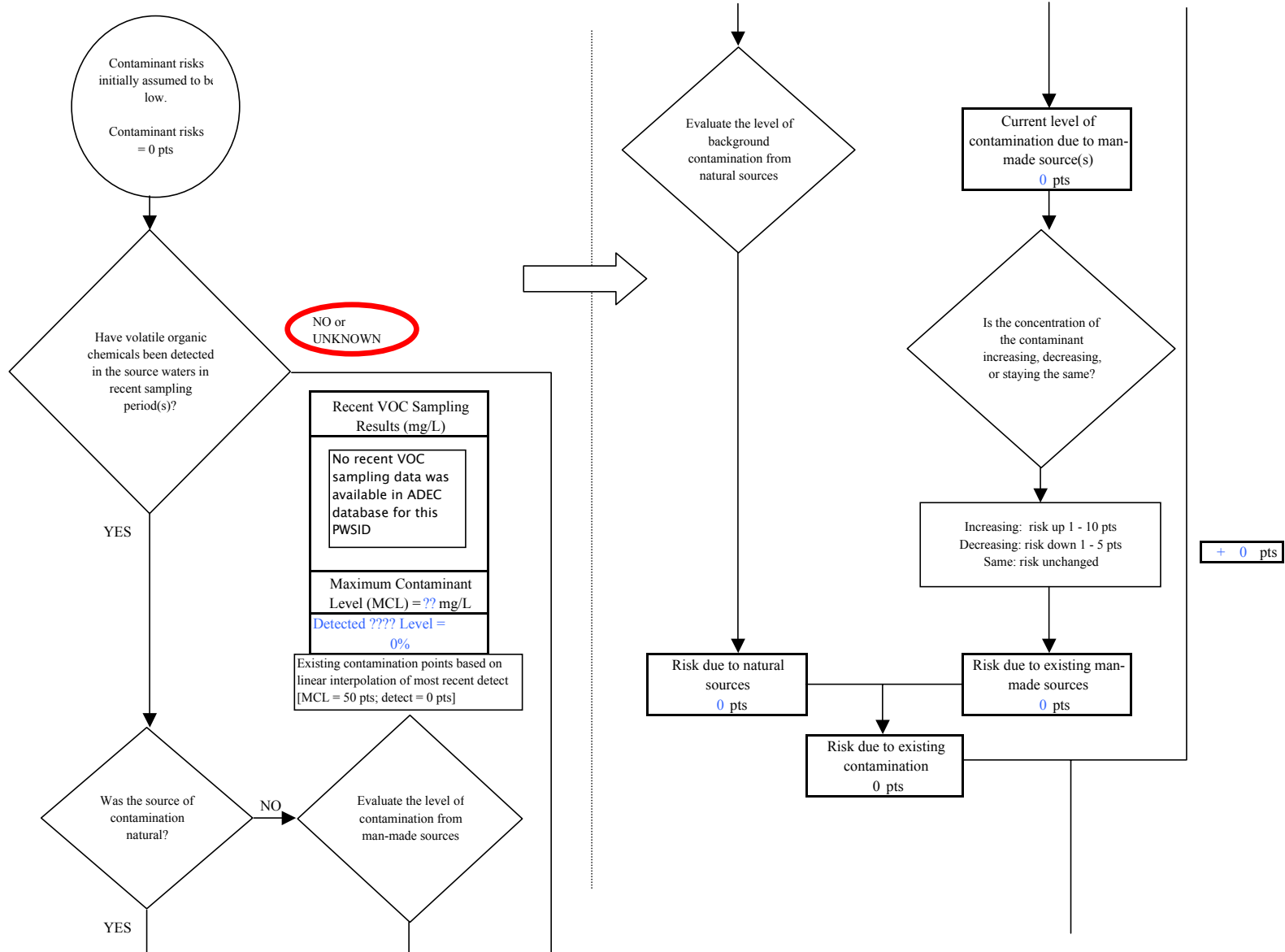


Chart 7. Contaminant risks for Eddies Fireplace Inn (PWS No. 261486.001) - Volatile Organic Chemicals

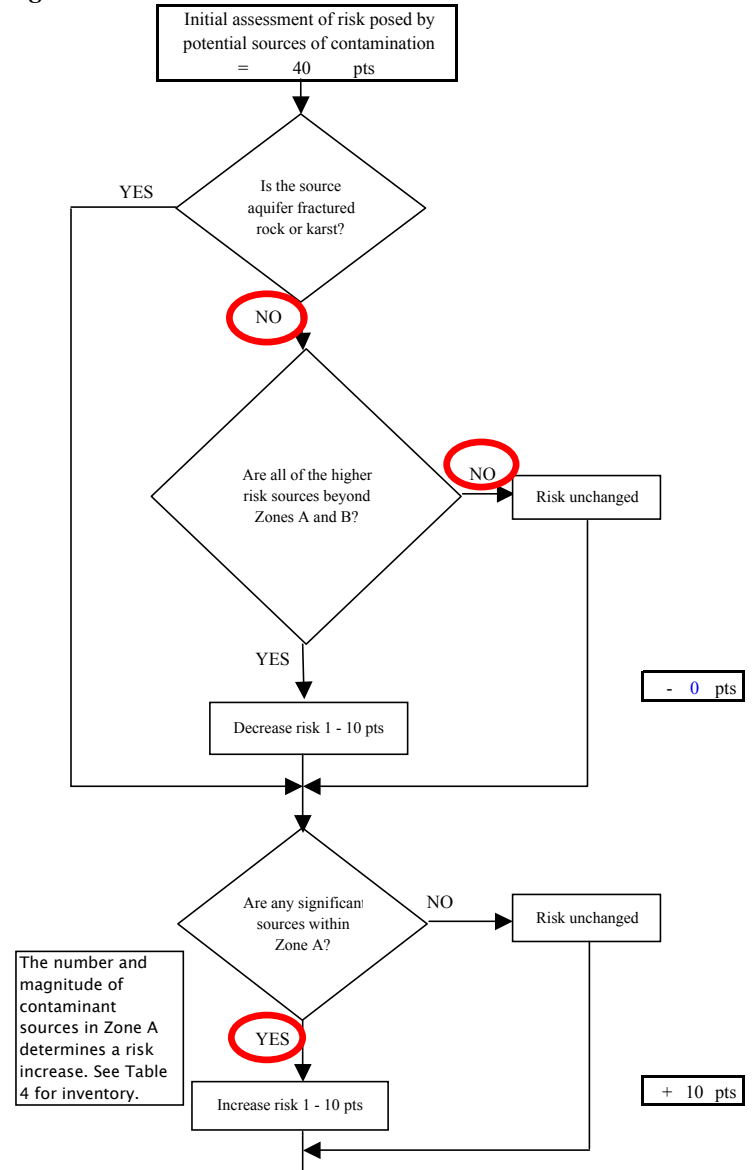
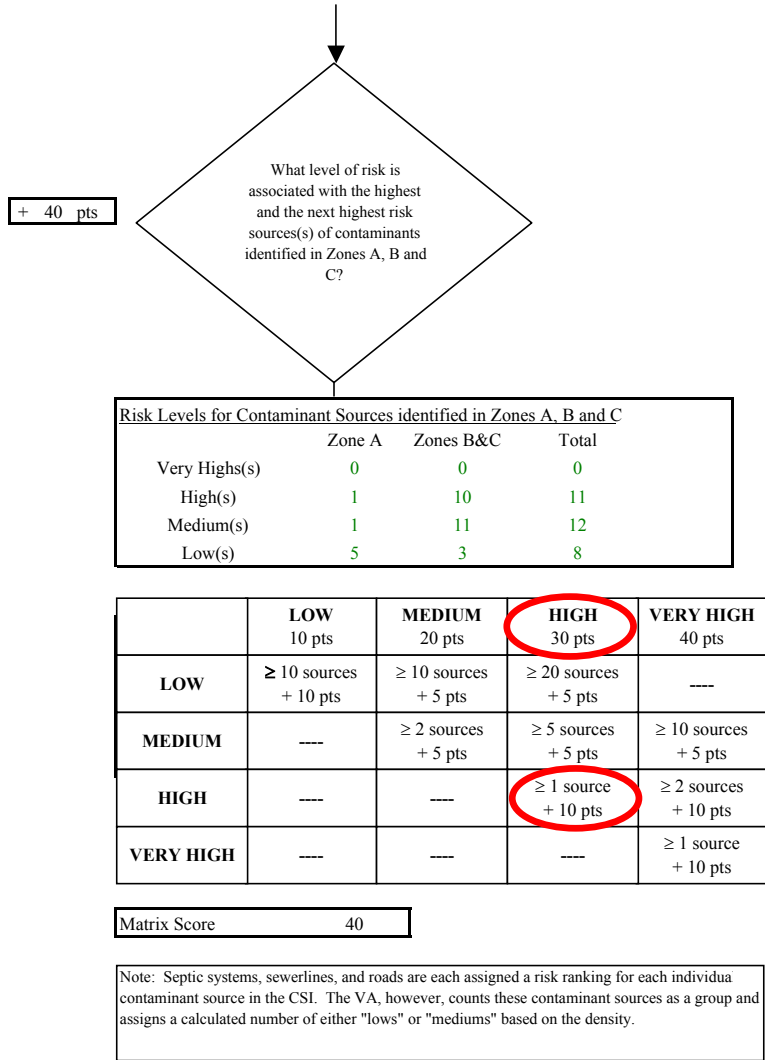


Chart 7. Contaminant risks for Eddies Fireplace Inn (PWS No. 261486.001) - Volatile Organic Chemicals

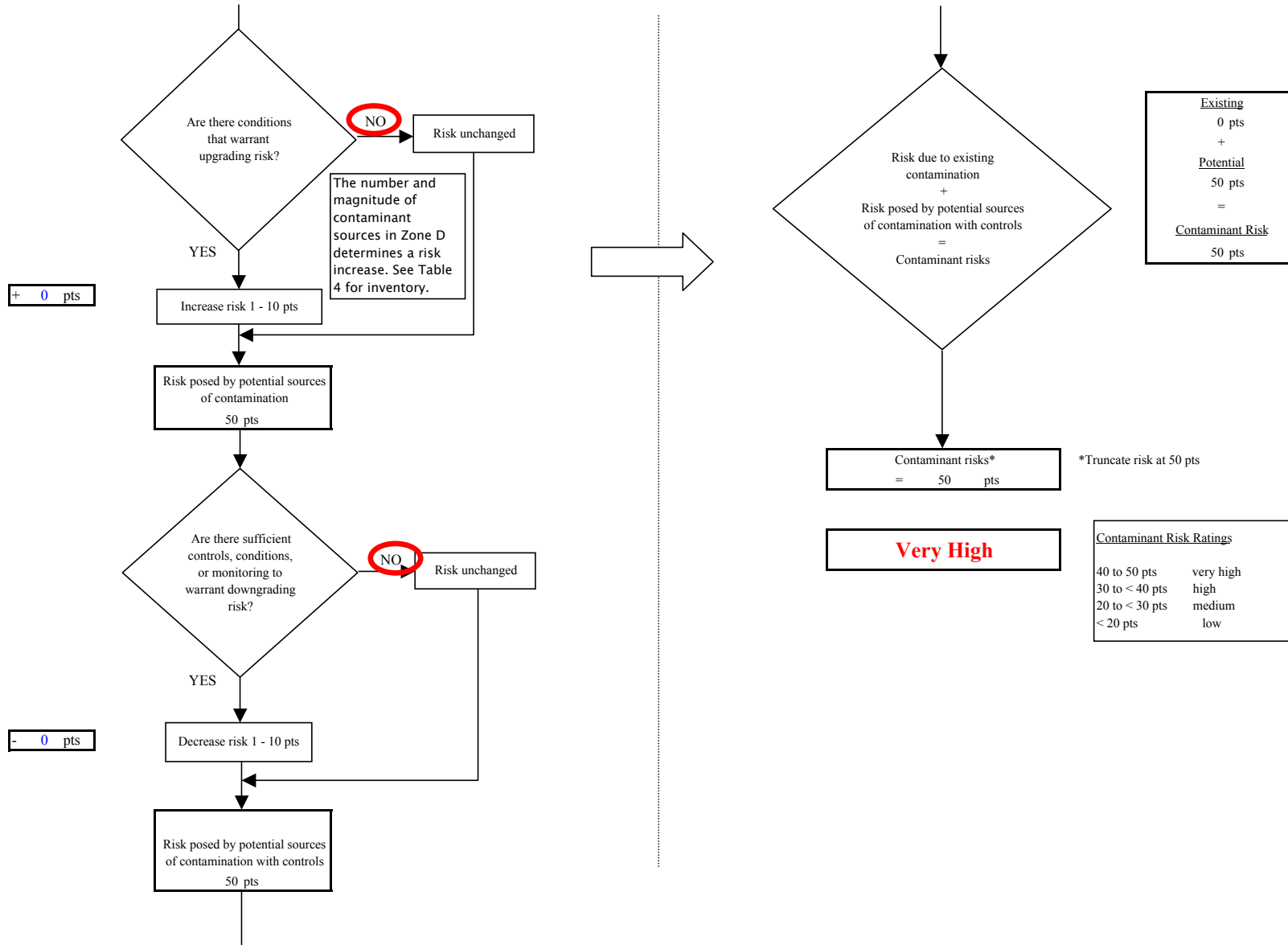


Chart 8. Vulnerability analysis for Eddies Fireplace Inn (PWS No. 261486.001) - Volatile Organic Chemicals

