



---

# Source Water Assessment

Ward Cove Market  
Ketchikan, Alaska

PWSID # 120729.001

July 2003

Drinking Water Protection Program Report #741  
Alaska Department of Environmental Conservation

# Source Water Assessment for Ward Cove Market Ketchikan, Alaska

PWSID# 120729.001

July 2003

Drinking Water Protection Program Report #741

The Drinking Water Protection Program (DWPP) is producing Source Water Assessments in compliance with the Safe Drinking Water Act Amendments of 1996. Each assessment includes a delineation of the source water area, an inventory of potential and existing contaminant sources that may impact the water, a risk ranking for each of these contaminants, and an evaluation of the potential vulnerability of these drinking water sources.

These assessments are intended to provide public water systems owners/operators, communities, and local governments with the best available information that may be used to protect the quality of their drinking water. The assessments combine information obtained from various sources, including the U.S. Environmental Protection Agency, Alaska Department of Environmental Conservation (ADEC), public water system owners/operators, and other public information sources. The results of this assessment are subject to change if additional data becomes available. It is anticipated this assessment will be updated every five years to reflect any changes in the vulnerability and/or susceptibility of public drinking water source. If you have any additional information that may affect the results of this assessment, please contact the Program Coordinator of DWPP, (907) 269-7521.

# CONTENTS

		Page
SECTION	Executive Summary	1
	Area Overview	1
	System Overview	1
	Inventory of Potential and Existing Contaminant Sources	1
	Ranking of Contaminant Risks	2
	Vulnerability of the Drinking Water System	2
	Additional Resources	4
	References	5

## TABLES

TABLE	1. Susceptibility of the Roof Catchment	2
	2. Ward Cove Market Contaminant Risks	3
	3. Ward Cove Market Overall Vulnerability	3

## APPENDICES

APPENDIX	A. Location Map (Map 1)	
	B. Vulnerability Analysis and Contaminant Risks (Charts 1 – 7)	
	C. Best Management Practices for Rainwater Catchment Systems in Alaska	

# Source Water Assessment for the Ward Cove Market Water System

---

## Drinking Water Protection Program Alaska Department of Environmental Conservation

### EXECUTIVE SUMMARY

The Ward Cove Market public water system is a Class B (community) water system that obtains water from a roof catchment system. Ward Cove Market is located at Mile 7.5 of the North Tongass Highway, in Ketchikan, Alaska. The roof collection surface area is approximately 1,800 to 2,000 square feet. Other key information regarding the water system is unknown our request for information was not returned. However, based on the June 1998 Sanitary Survey and conservative assumptions, it received a susceptibility rating of **“Very High.”** *A rating of medium to high is typical for roof catchment systems.* Potential and existing sources of the following contaminants were evaluated for the Source Water Assessment: bacteria and viruses, nitrates and/or nitrites, and volatile organic chemicals. This evaluation included all available water sampling data submitted to ADEC by the system operator. The samples may have been collected from either raw water or post-treated water. Combining the susceptibility of the surface water source with the contaminant risks, this water system has received a vulnerability rating of **“medium”** for all contaminant categories.

### AREA OVERVIEW

Ketchikan (Sec. 30, T075S, R091E, Copper River Meridian.) is located on the southwestern coast of Revillagigedo Island, opposite Gravina Island, near the southern boundary of Alaska. It is 679 miles north of Seattle and 235 miles south of Juneau. The 2.2 million acre Misty Fjords National Monument lies 22 air miles east of Ketchikan (See Map 1 in Appendix A for location). The current population is approximately 8,000 (ADCED, 2003).

Strong winds and frequent precipitation are normal here. Summer temperatures range from 51 to 65 degrees Fahrenheit; winter temperatures range from 29 to 39 degrees Fahrenheit. Ketchikan averages 162 inches (13.5 feet) of precipitation annually, including 32 inches of snowfall (ADCED, 2003).

### SYSTEM OVERVIEW

The Ward Cove Market water system is a Class B (community) water system that operates year round and provides water for approximately 30 users. The

grocery is located on North Tongass Highway, in Ketchikan. (See Map 1 of Appendix A). The roof collection surface area is unknown.

The most recent sanitary survey (1998) states that the system has an average daily production of 400 gallons and the collection gutters are not screened or covered. The system operator did not return a survey to the Drinking Water Protection Program contractor in June 2003; however, it is assumed that:

- the roof is not constructed of steel
- the roof is painted
- the collection gutters are not screened or covered
- there is vegetation directly overhanging the roof
- the first flush of each rainfall is collected into storage

### INVENTORY OF POTENTIAL AND EXISTING CONTAMINANT SOURCES

The Drinking Water Protection Program has completed an inventory of potential and existing sources of contamination for the Ward Cove Market drinking water system. This inventory was completed through a search of agency records and other publicly available information. Even though roof catchment systems have small collection areas when compared with surface water or groundwater systems, there are still potential risks to the quality of water that is collected. These risks may come from either plant, animal, or bacterial matter deposited onto the roof or from material used in the construction of the water collection and treatment system.

For Class B public water system assessments, three categories of drinking water contaminants were inventoried. They include:

- Bacteria and viruses;
- Nitrates and/or nitrites;
- Volatile organic chemicals;

The evaluation of these contaminants was performed by reviewing all available water sampling data submitted to ADEC by the system operator during the past 5 years. The samples may have been collected from either raw water or post-treated water.

## RANKING OF CONTAMINANT RISKS

Once sources of contamination have been identified, they are assigned a ranking according to what category and level of risk they represent. Ranking of contaminant risks for sources of contamination is a function of the toxicity and the volume of specific contaminants associated with that source. Rankings include:

- Low;
- Medium;
- High; and
- Very High.

## VULNERABILITY OF THE DRINKING WATER SYSTEM

Vulnerability of a roof catchment drinking water source to contamination is a combination of two factors:

- Susceptibility of the Roof Catchment; and
- Contaminant risks.

Appendix B contains 7 charts, which together form the ‘Vulnerability Analysis’ for the Source Water Assessment. Chart 1 analyzes the ‘Susceptibility of the Roof Catchment’ to contamination by looking at some design and construction characteristics of the system. Chart 2 analyzes ‘Contaminant Risks’ for the drinking water source with respect to bacteria and viruses. The ‘Contaminant Risks’ portion of the analysis is the result of reviewing historical water quality samples for the system. Chart 3 contains the ‘Vulnerability Analysis for Bacteria and Viruses’, which is a composite score of the Vulnerability Analysis and the overall Susceptibility. Charts 4 through 7 repeat the Contaminant Risks and Vulnerability Analyses for nitrates/nitrites and volatile organic chemicals.

A score for the Susceptibility of the Roof Catchment is determined by considering the properties of the water intake and the surrounding area. The derivation of this information is presented below and the data for this source is shown in Chart 1 of Appendix B.

Susceptibility of the Roof Catchment – always considered to be at least “moderate” (20 points)  
 +  
 Roof construction material (0 – 5 Points)  
 +  
 Is the roof painted? (0 – 5 Points)  
 +  
 Are collection gutters covered or screened?  
 (0 – 5 Points)  
 +

Does any vegetation overhang the roof?  
 (0 – 5 points)

+

Is the first flush of water collected into storage?  
 (0 – 5 points)

=

Natural Susceptibility  
 (0 – 45 Points)

A ranking is assigned for the Surface Water Susceptibility according to the point score:

### Surface Water Source Susceptibility Ratings

40 to 45 pts	Very High
30 to 39 pts	High
20 to 29 pts	Medium

Table 1 summarizes the susceptibility scoring for the Ward Cove Market.

**Table 1. Susceptibility of the Roof Catchment**

	Score	Rating
Minimum Allowable Susceptibility	20	
Roof construction	5	
Roof painted	5	
Collection gutters screened	5	
Overhanging vegetation	5	
First flush collected	5	
Overall Susceptibility	45	Very High

As previously mentioned, the Contaminant Risk score is derived from the review of historical water quality samples from the past 5-years for the system. Flow charts are used to assign a point score, and ratings are assigned in the same manner as susceptibility:

### Contaminant Risk Ratings

40 to 50 pts	Very High
30 to < 40 pts	High
20 to < 30 pts	Medium
< 20 pts	Low

Table 2 summarizes the Contaminant Risks for each category of drinking water contaminants.

**Table 2. Ward Cove Market Contaminant Risks**

Category	Score	Rating
Bacteria and Viruses	0	Low
Nitrates and/or Nitrites	0	Low
Volatile Organic Chemicals	0	Low

Finally, an overall vulnerability score is assigned for each contaminant type by combining each of the contaminant risk scores with the susceptibility score:

$$\begin{aligned}
 &\text{Susceptibility of Roof Catchment} \\
 &\quad (0 - 45 \text{ points}) \\
 &\quad + \\
 &\text{Contaminant Risks (0 - 50 points)} \\
 &\quad = \\
 &\text{Vulnerability of the} \\
 &\text{Drinking Water Source to Contamination (0 - 95)}.
 \end{aligned}$$

Again, rankings are assigned according to a point score:

**Overall Vulnerability Ratings**

80 to 95 pts	Very High
60 to < 80 pts	High
40 to < 60 pts	Medium
< 40 pts	Low

Table 3 contains the overall vulnerability scores and ratings for each of the six categories of drinking water contaminants. Note: scores are rounded off to the nearest five.

**Table 3. Ward Cove Market Overall Vulnerability**

Category	Score	Rating
Bacteria and Viruses	45	Medium
Nitrates and Nitrites	45	Medium
Volatile Organic Chemicals	45	Medium

**Bacteria and Viruses**

The contaminant risk for bacteria and viruses is “low.”

No consecutive positive results for bacteria viruses were detected in recent sampling events. Coliforms (a bacteria) are found naturally in the environment and although they aren’t necessarily a health threat, they are an indicator of other potentially harmful bacteria in the water, more specifically, fecal coliforms and E. coli which only come from human and animal fecal waste. Harmful bacteria can cause diarrhea, cramps, nausea, headaches, or other symptoms (EPA, 2003). Positive samples increase the overall vulnerability of the

drinking water source, indicating that the source is susceptible to bacteria and virus contamination. Typically, coliform detection in raw water samples collected from surface water sources is normal. (See Chart 2 – Contaminant Risks for Bacteria and Viruses in Appendix B).

A possible source of bacteria could be animal excrement (birds, squirrels, etc.) on the roof.

After combining the contaminant risk for bacteria and viruses with the natural susceptibility of the source, the overall vulnerability of the source to bacteria and virus contamination becomes “medium”.

**Nitrates and Nitrites**

The contaminant risk for nitrates and nitrites is “low” (See Chart 4 - Contaminant Risks for Nitrates and/or Nitrites in Appendix B). Nitrates are very mobile, moving at approximately the same rate as water.

Sampling history for the water source indicates that nitrates were not detected in recent sampling events. The Maximum Contaminant Level (MCL) for nitrates is 10 mg/L, and is the maximum level of contaminant that is allowed to exist in drinking water and still be consumed by humans without harmful health effects (EPA, 2003).

A possible source of nitrate/nitrites is the presence of animal (birds, squirrels, etc.) excrement on the roof.

After combining the contaminant risk for nitrates and nitrites with the natural susceptibility of the source, the overall vulnerability of the source to contamination is “medium.”

**Volatile Organic Chemicals**

The contaminant risk for volatile organic chemicals is “low” (See Chart 6 – Contaminant Risks for Volatile Organic Chemicals in Appendix B).

No volatile organic chemicals were available for recent sampling events. After combining the contaminant risk for volatile organic chemicals with the natural susceptibility of the source, the overall vulnerability of the source to contamination is “medium.”

**ADDITIONAL RESOURCES**

Appendix C contains the results of a comprehensive evaluation of Best Management Practices for rainwater catchment systems in Alaska. It is recommended that system operator review this document when considering ways to protect the quality of their drinking water system.

## **REFERENCES**

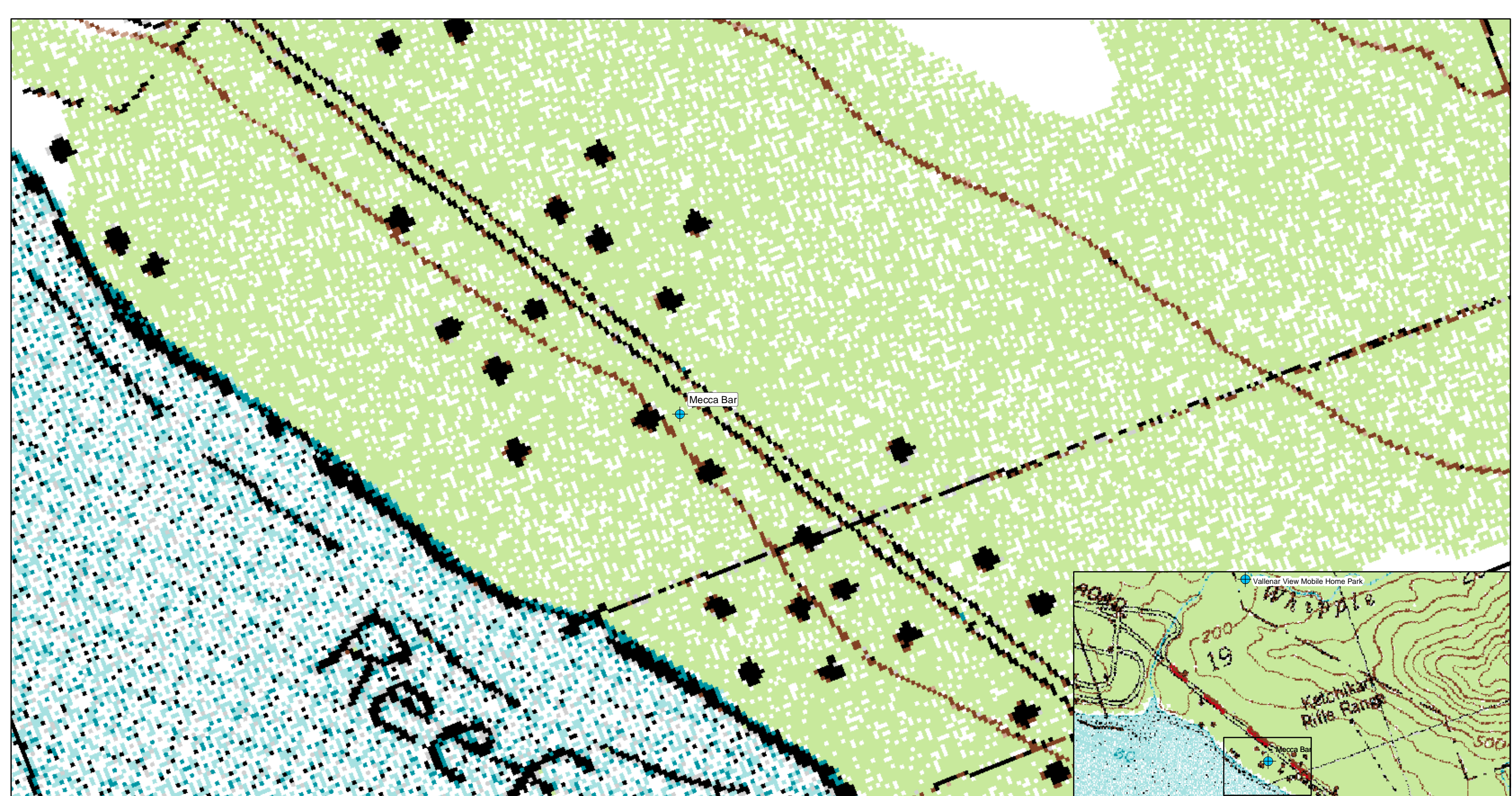
Alaska Department of Community and Economic Development (ADCED), 2003 [WWW document]. URL [http://www.dced.state.ak.us/cbd/commdb/CF\\_COMDB.htm](http://www.dced.state.ak.us/cbd/commdb/CF_COMDB.htm)

United States Environmental Protection Agency (EPA), 2003 [WWW document]. URL <http://www.epa.gov/safewater/mcl.html>.

# **APPENDIX A**

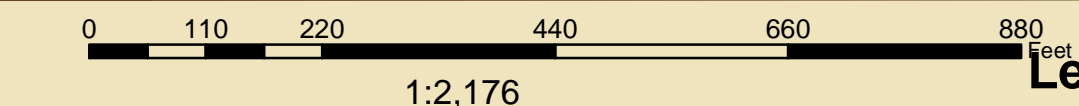
## **Location Map (Map 1)**






Map 1: Mecca Bar

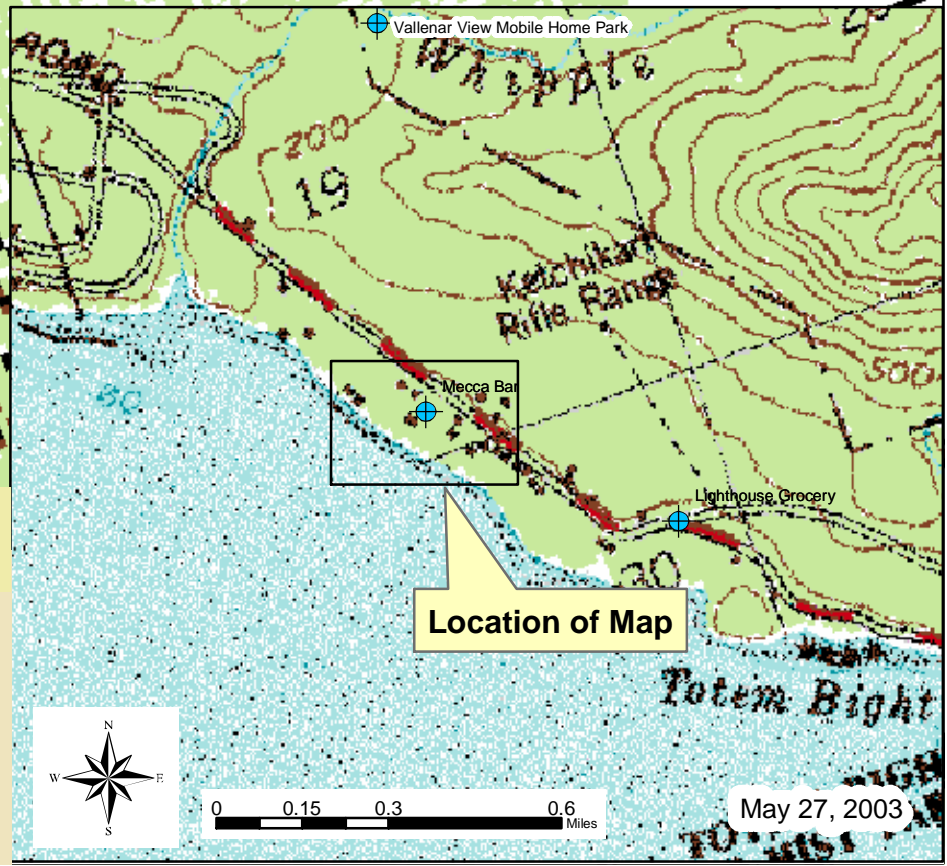
PWSID: 120101.001



Data Sources:  
Background image - USGS 1:25,000 mapping

Legend

 Public Drinking Water Systems

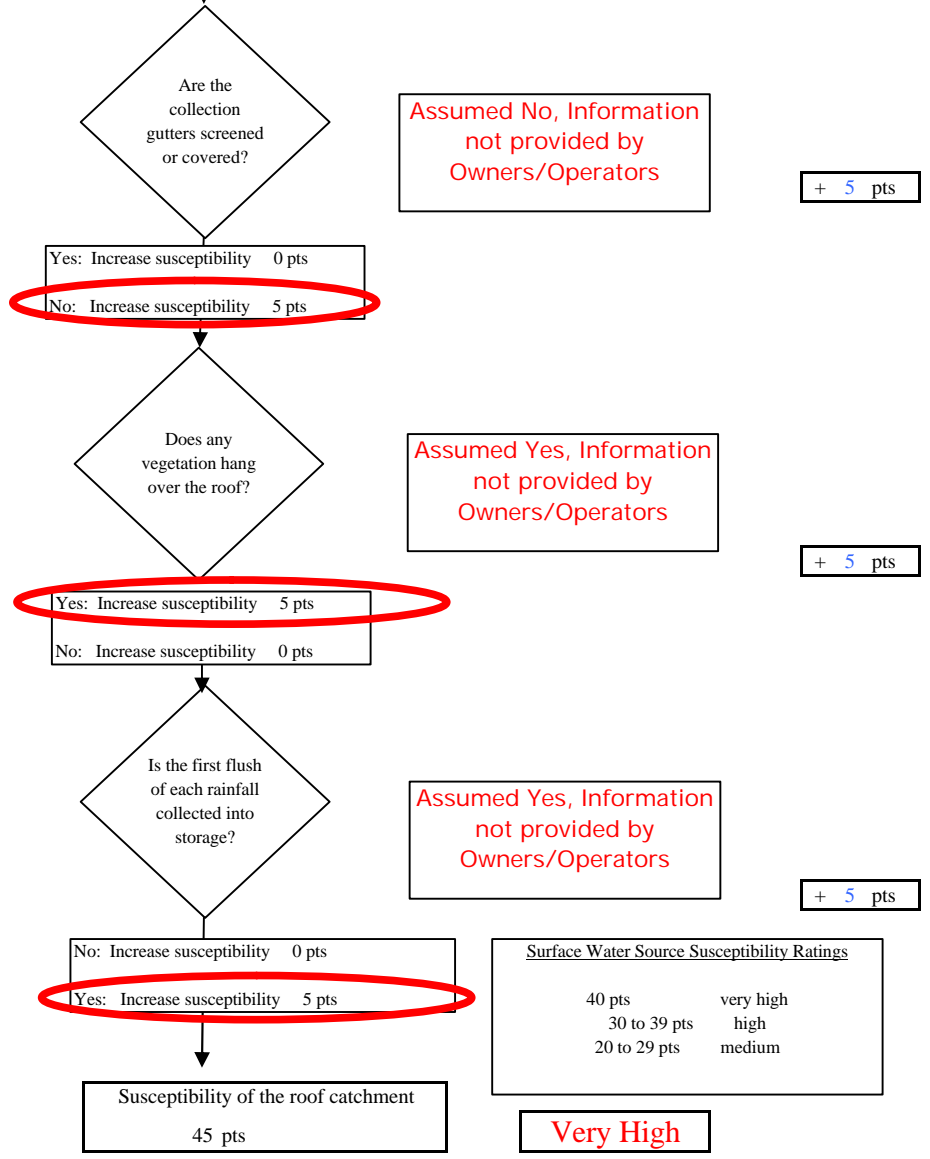
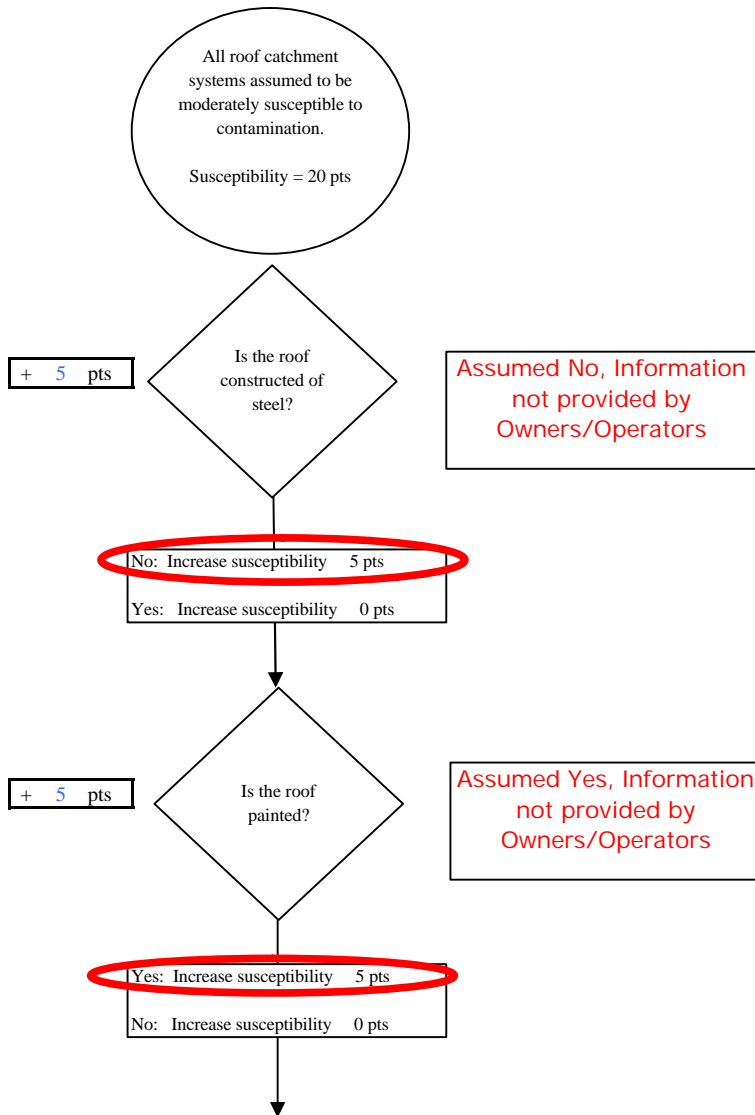


May 27, 2003

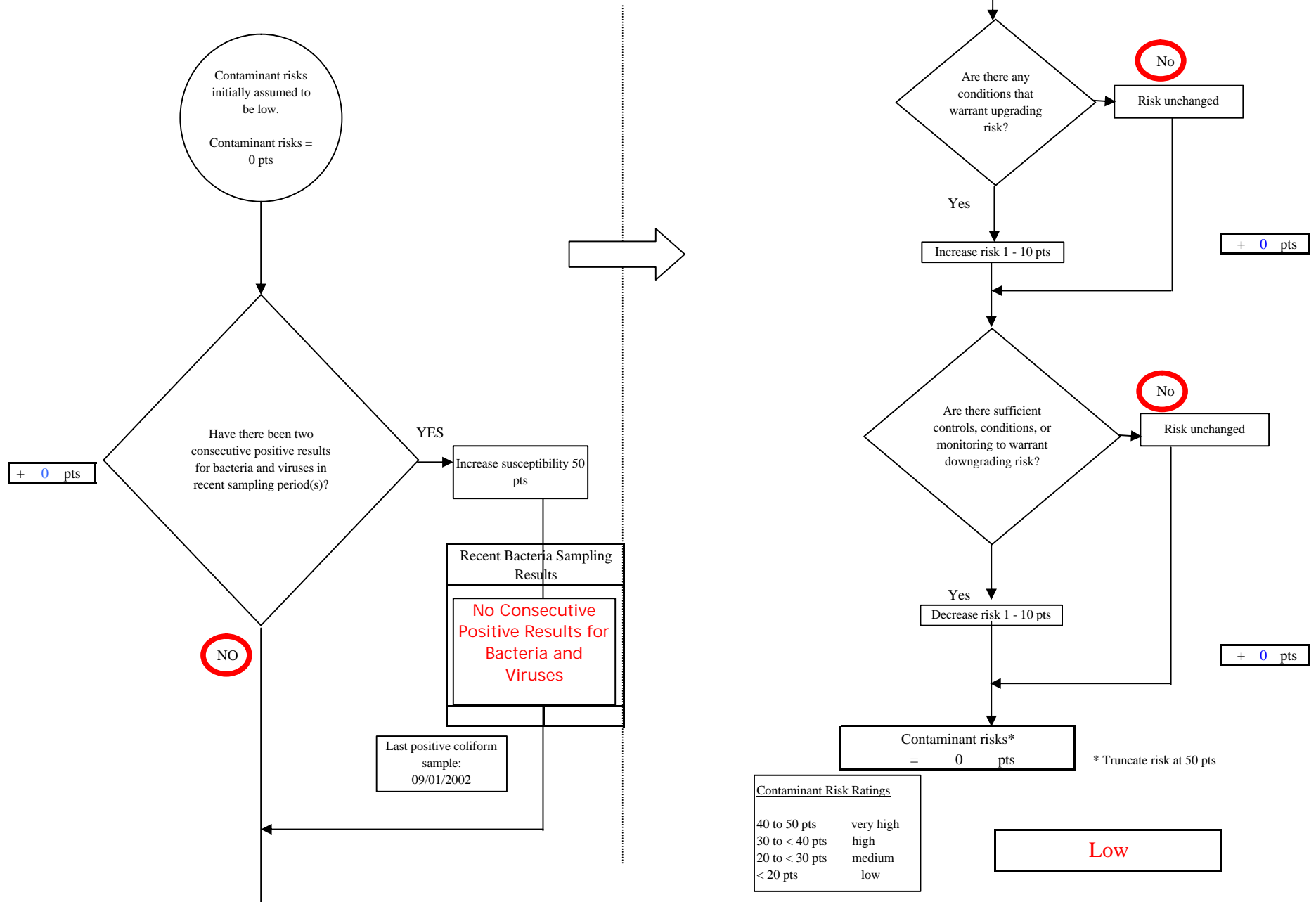
## **APPENDIX B**

### **Vulnerability Analysis and Contaminant Risks (Charts 1-7)**

**Chart 1. Susceptibility of the Roof Catchment - Ward Cove Market**



**Chart 2. Contaminant risks for Ward Cove Market - Bacteria & Viruses**



**Chart 3. Vulnerability analysis for Ward Cove Market - Bacteria & Viruses**

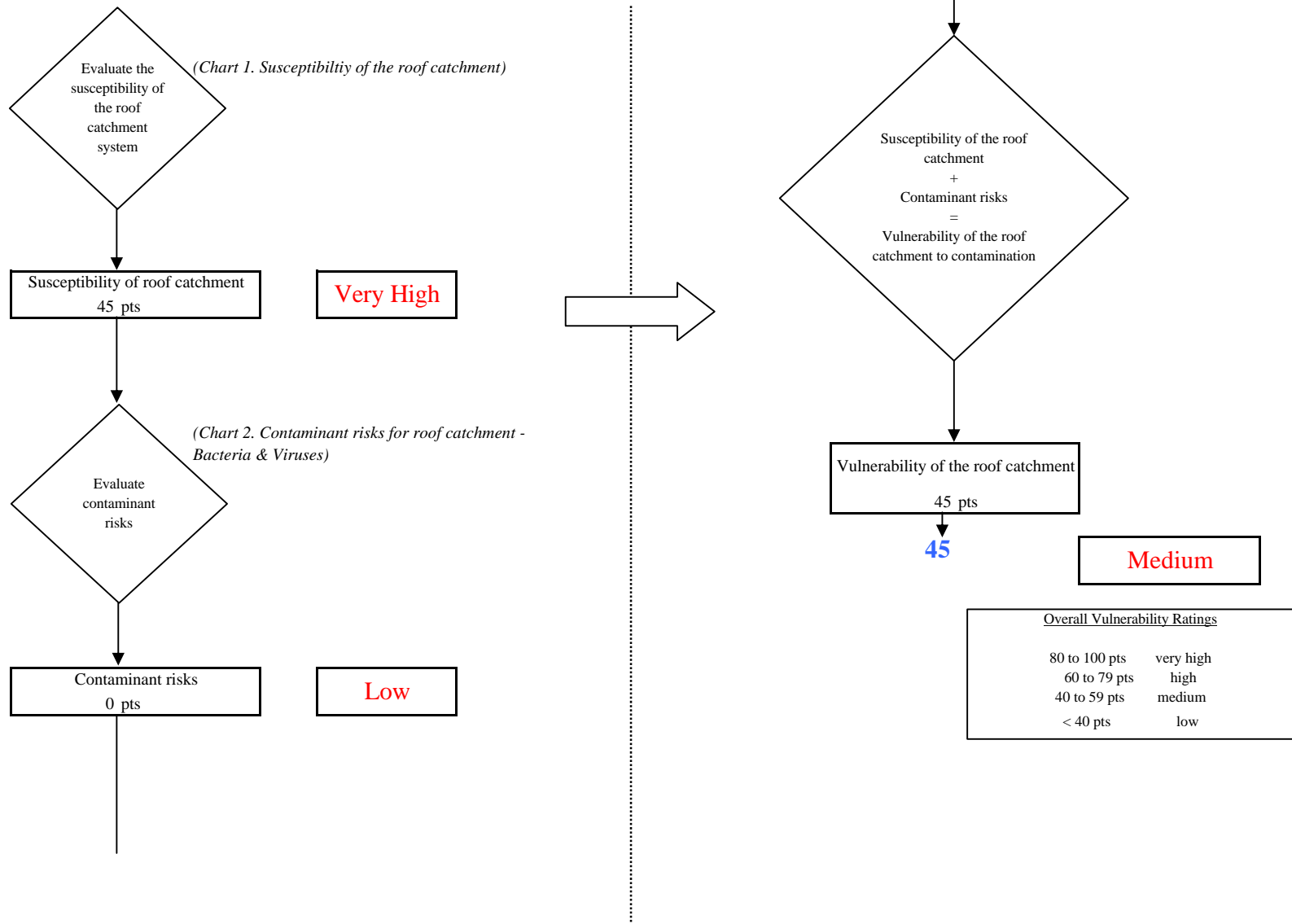


Chart 4. Contaminant risks for Ward Cove Market - Nitrates and Nitrites

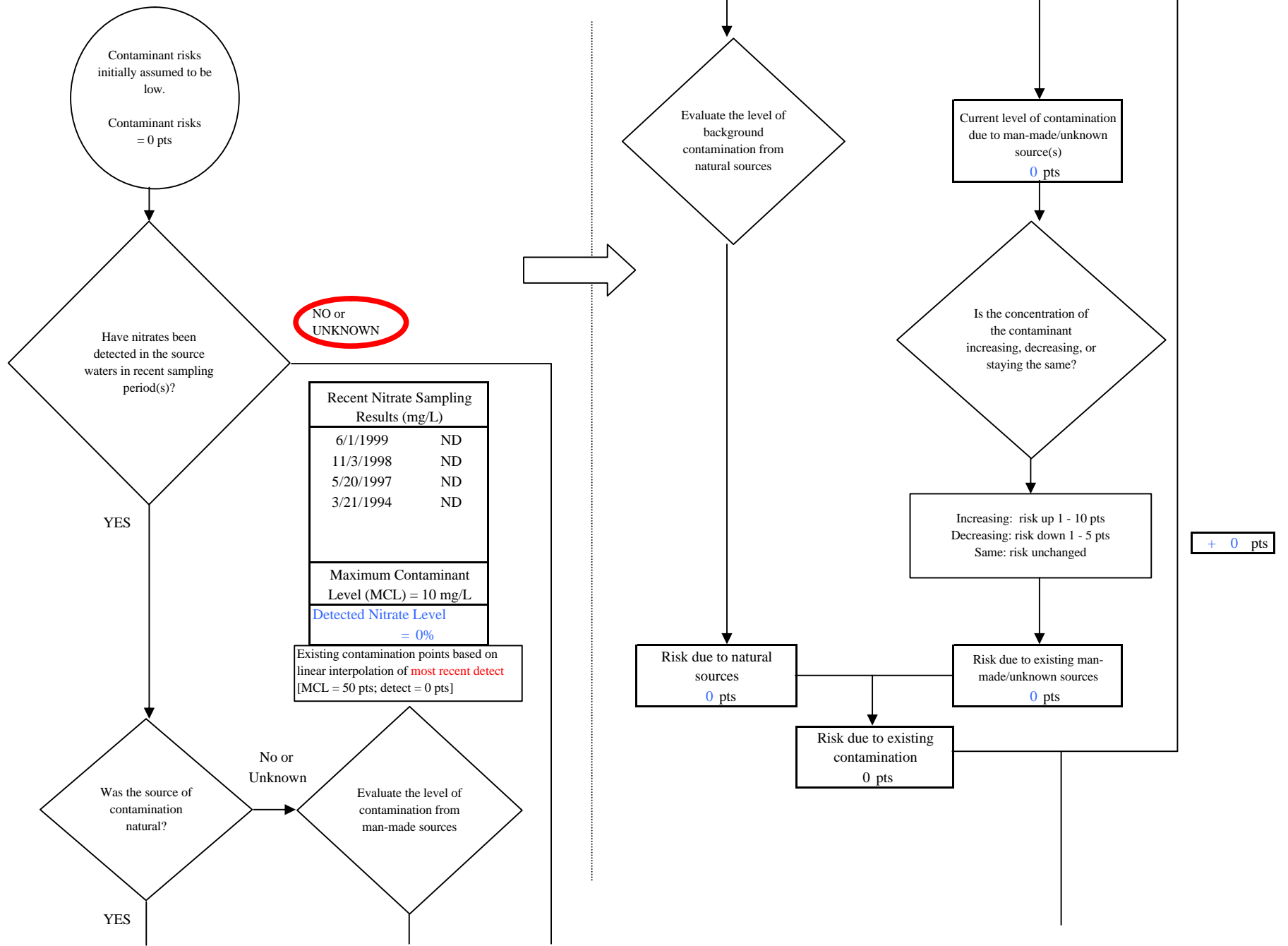
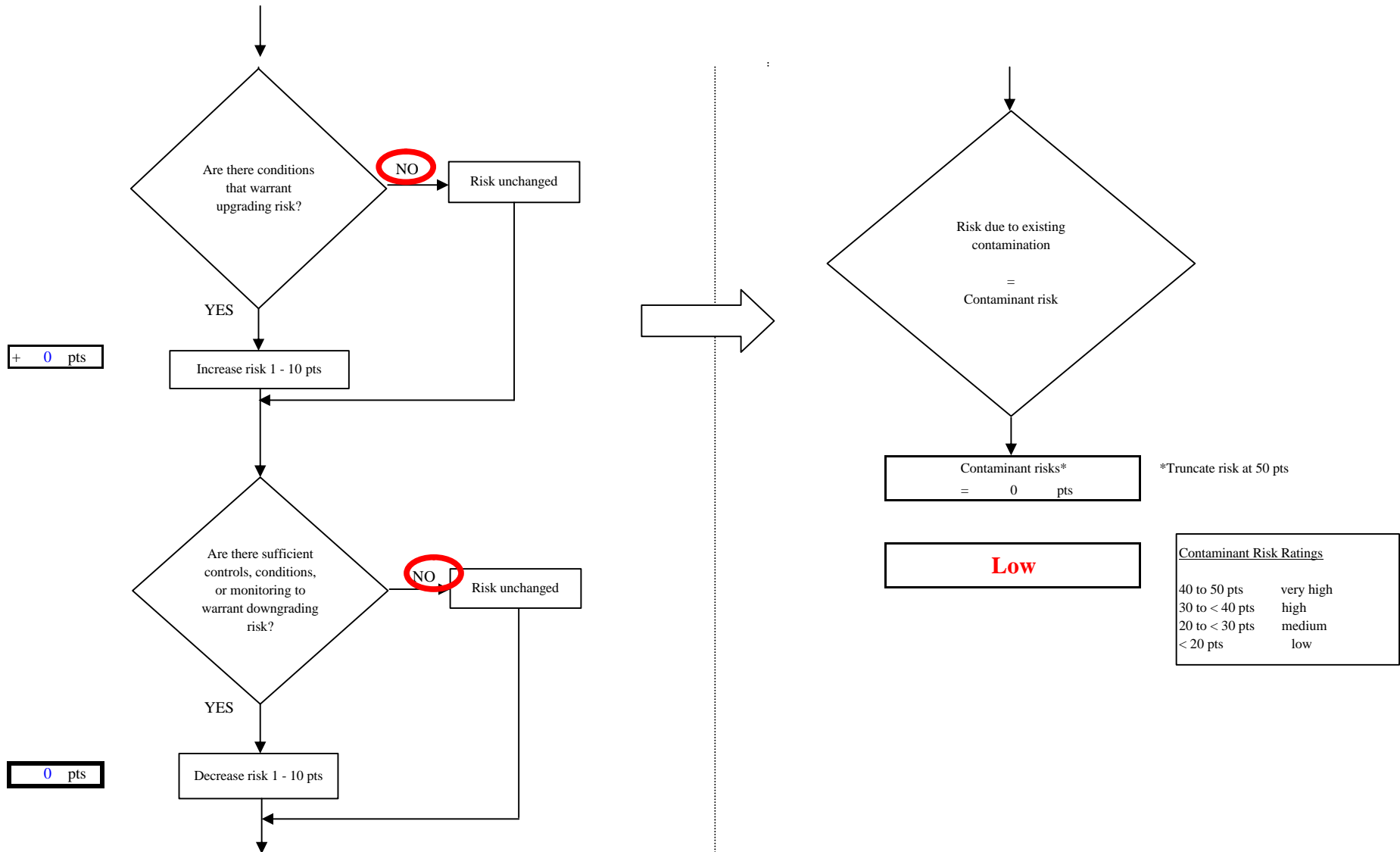


Chart 4. Contaminant risks for Ward Cove Market - Nitrates and Nitrites



**Chart 5. Vulnerability analysis for Ward Cove Market - Nitrates and Nitrites**

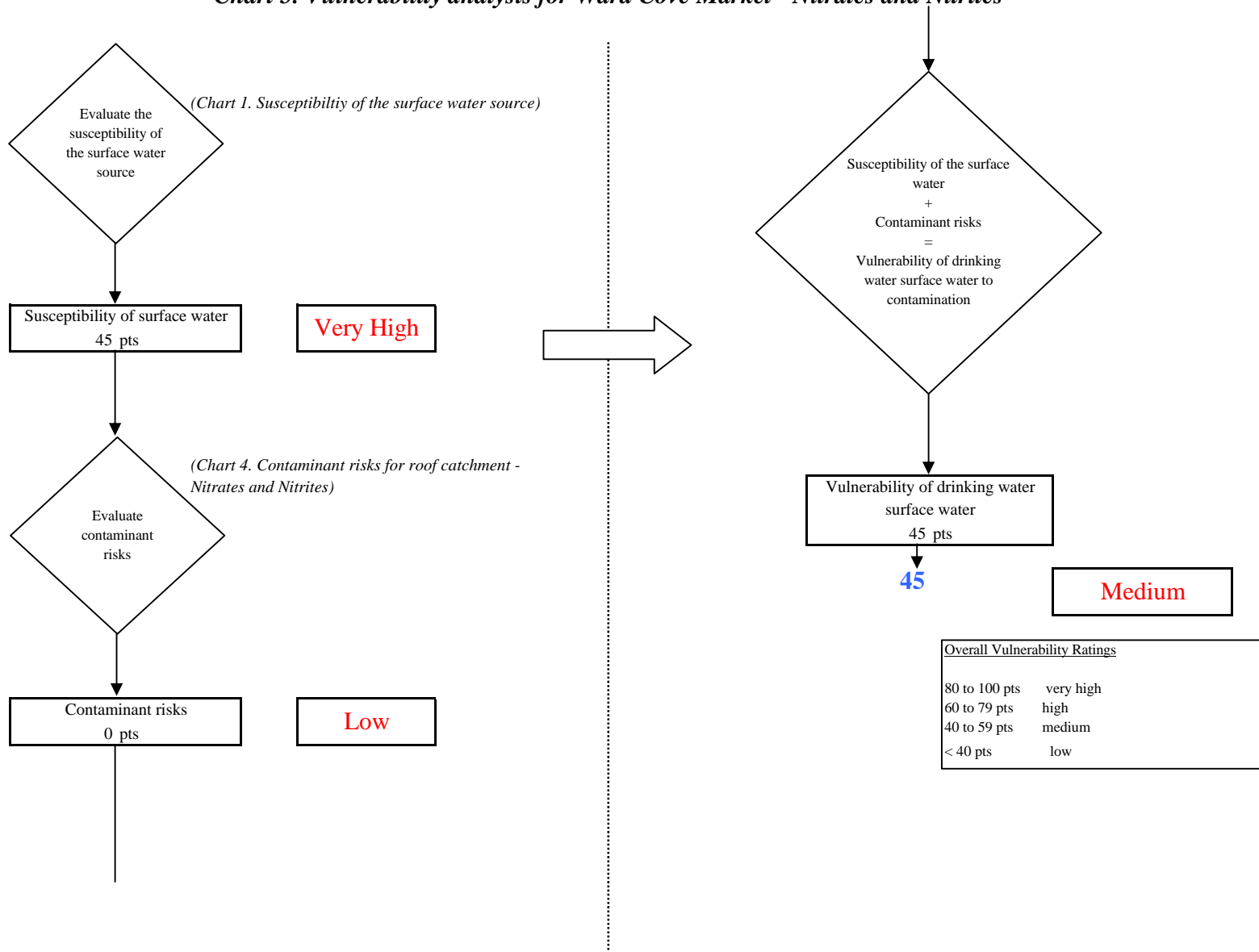




Chart 6. Contaminant risks for Ward Cove Market - Volatile Organic Chemicals

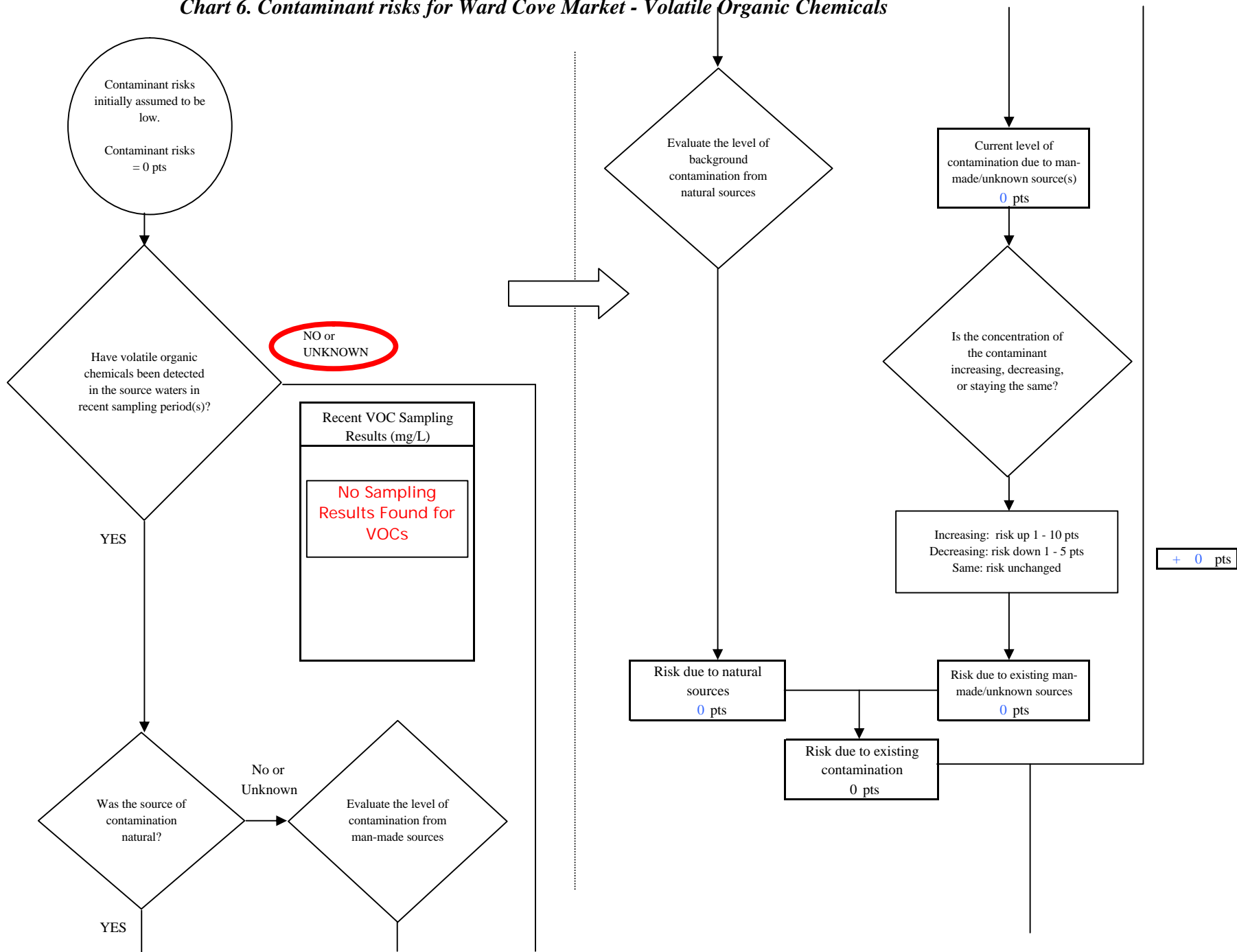
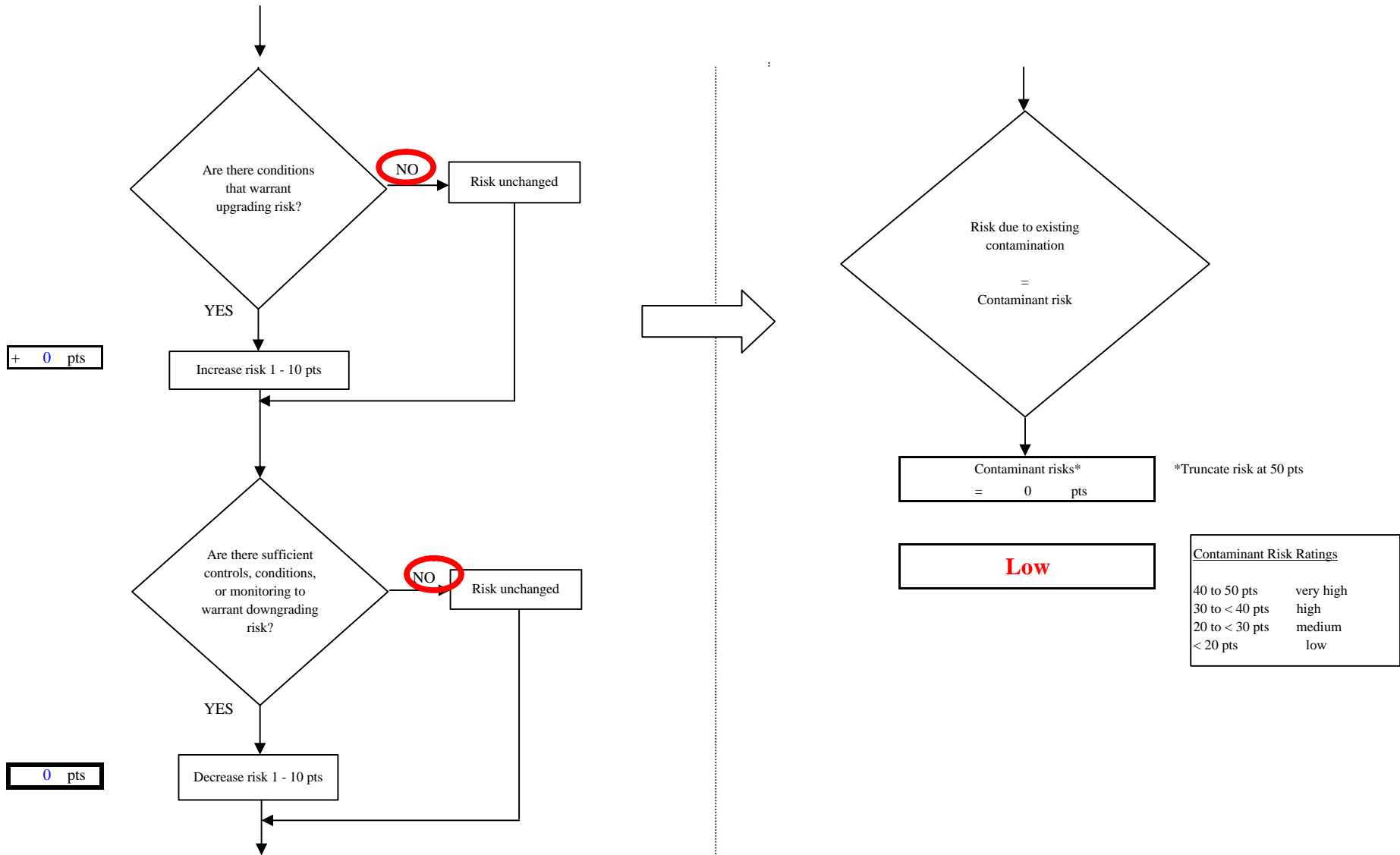
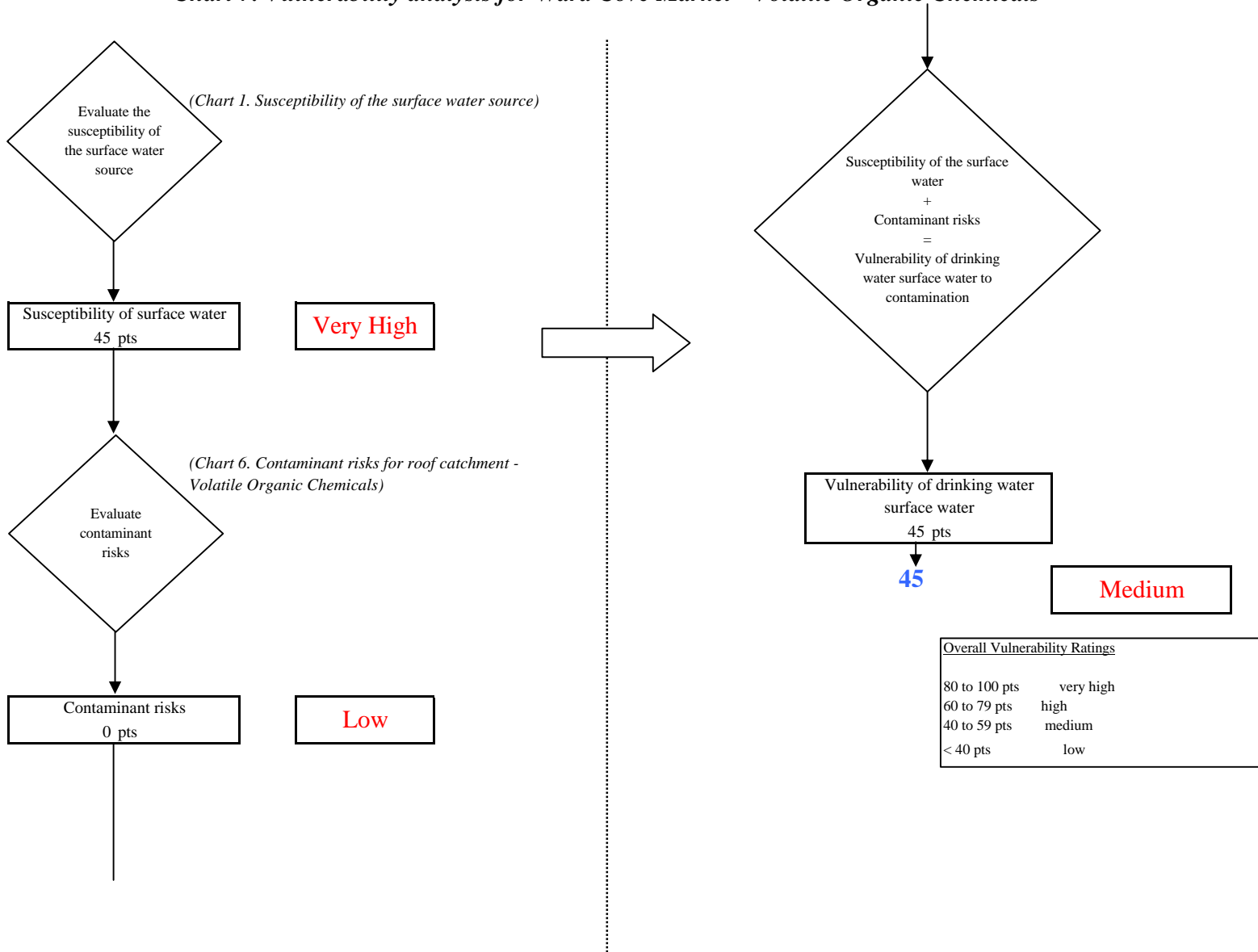


Chart 6. Contaminant risks for Ward Cove Market - Volatile Organic Chemicals



**Chart 7. Vulnerability analysis for Ward Cove Market - Volatile Organic Chemicals**



## **APPENDIX C**

### **Best Management Practices for Rainwater Catchment Systems in Alaska**



COLD CLIMATE HOUSING RESEARCH CENTER

**CCHRC**

*Promoting the development and advancement of healthy, durable and economically sound shelter for Alaskans and circumpolar people.*

# Best Management Practices for Rainwater Catchment Systems in Alaska

A publication of the Cold Climate Housing Research Center

Feb. 2003

## Applications for Domestic Water Use

**Corianne Hart, Dr. Dan White**  
**Water and Environmental**  
**Research Center**  
**University of Alaska, Fairbanks**

Many families throughout Alaska depend on water catchment systems to provide water for washing, cleaning, cooking and drinking purposes. The high quality of rainwater is one reason to use rain as a primary drinking water source. However, once rainwater comes in contact with materials in the catchment system, contaminants can be introduced that adversely affect human health.

UAF was funded by CCHRC through a grant from AHFC to evaluate best management practices (BMPs) for rainwater catchment systems in Alaska. The study included the impact of roof, gutter, reservoir, pump, pipe, and filter materials on the suitability of water for human consumption. This was accomplished through literature research with particular attention to building materials in common use in Alaska. This study is not limited to a specific region of Alaska and makes suggestions as to which material(s) would best reduce the risk of drinking water contamination by water catchment systems.

### **DISCUSSION ABOUT CURRENT DRINKING WATER STANDARDS:**

Products that come into contact with drinking water can be tested and certified to ensure that they do not leach chemicals into the drinking water. Several non-profit organizations specialize in testing and certifying such products. The leader in this field is the National Sanitation Foundation which is now called NSF International (<http://www.nsf.org/>). Together with the American National Standard Institute (ANSI), NSF International has created testing/material standards widely used and accepted for drinking water.

*NSF/ANSI Standard 61*, 'Drinking Water System Com-

ponents-Health Effects,' is the most important drinking water standard. It covers many materials from the tank to the faucet. The standard addresses crucial aspects of drinking water system components: such as contaminants that leach or migrate from the product/material into the drinking water. (<http://www.nsf.org/>)

*NSF/ANSI Standard 53*, 'Drinking Water Treatment Units-Health Effects,' applies to filters. This standard has similar requirements as Standard 61, plus the added requirement that it may be effective in reducing substances, such as microbiological, chemical or contaminants, under the appropriate flow rate. (<http://www.nsf.org/>)

*NSF Protocol P151*, 'Health Effects from Rainwater Catchment System Components,' deals only with products used in rainwater catchment systems. This Protocol evaluates Environmental Protection Agency regulated contaminants which could leach from materials used in rainwater catchment systems, such as roofing materials, coatings, paints, liners and gutters. Products meeting the requirements of this protocol are required to maintain contaminate levels below those specified in the latest version of the EPA's Drinking Water Regulations and Health Advisories. (<http://www.nsf.org/>)

### **ROOF:**

*Potable Water Use:* There are a wide variety of roof materials found on Alaska homes. The most common are asphalt based shingles, painted calume steel, wood shingles, and painted and unpainted aluminum. In general, metal roofs are the recommended roofing material in rainwater catchment systems<sup>1,2</sup>. They are smoother, cleaner, more impervious and more durable than other types of roofing materials<sup>1,3</sup>.

Currently, there is no roofing material certified for potable water. Therefore, a coating, or membrane applied to the top of the roofing material is the best practice. Of the several coatings certified under NSF 61 or NSF P151, only one is rated for freezing temperatures (SEALPRO, [http://users.rcn.com/sealproinc/protective\\_coatings.htm](http://users.rcn.com/sealproinc/protective_coatings.htm)).

*Non-Potable Water Use:* If a rainwater catchment is going to be used for purposes other than drinking or cooking use, many roofing

# CCHRC

materials can be considered suitable for catchment surfaces. When considering non-potable uses for rainwater, the roofing material and use compatibility should be considered. For example, wood and asphalt roofs tend to collect bacteria. In addition, organic and inorganic chemicals, such as asbestos can be leached from asphalt roofing<sup>3,5,6</sup>. Aluminum roofs could react with acidic rainwater and lead to increased levels of aluminum in the water. Any contact with lead paint or copper and lead flashings could lead to an unacceptable concentration of heavy metals in the water<sup>1-3,5,7-9</sup>. Galvanized metal roofs are a controversial material because zinc and other metals could be leached into the water, however, in most cases the zinc concentration is below the maximum concentration limit set by the World Health Organization (WHO)<sup>1,8,10</sup>. Some sheet metal materials may contain lead and caution is needed when considering this roofing material in catchment systems<sup>6,10</sup>.

## ROOF WASHER/LEAF SCREENS:

Roof washer systems are used to discard the first flush of rain at the beginning of a rain event. The purpose of a roof washer is to reduce the concentration of contaminants, including bacteria and other debris by discarding the first flush of rainwater collected from the roof<sup>1-3,5,9,11</sup>. A roof washer minimizes the amount of leaves, twigs, insects and other matter in the reservoir. This, in turn, improves the taste, color and odor of the reservoir water.

Currently there are no leaf screens made from material certified for potable water. However, screens could potentially improve the quality of the water by keeping leaves and other debris out of the reservoir<sup>1,2</sup>. They are installed along the entire length of the gutter, or they could consist of wire baskets at the heads of the downspouts. A course leaf filter can also be installed anywhere from the gutter to the entrance to the tank. The most popular positions are in the gutter, at the beginning of the down pipe or in the down pipe. These leaf filters must be cleaned and maintained on a regular basis to prevent blockage to the reservoir<sup>1,2</sup>. Trees surrounding the roof can be strategically removed to decrease the amount of pine needles, leaves and small twigs that might fall on the catchment surface<sup>1,4</sup>.

## GUTTER:

There are no approved or certified potable water gutters currently available. For catchment systems intended for potable water, a membrane approved for potable water could be applied over the gutter material to prevent leaching of chemicals. Certified membranes can be used to cover aluminum, galvanized steel and plastic gutters. Aluminum is sunlight-resistant and naturally resistant to corrosion<sup>1,3</sup>. Galvanized steel is widely used because of its pliability<sup>3</sup>. Copper and iron gutters

could leach metals into the drinking water when exposed to acidic rain water. All gutter materials should be free of lead<sup>1,3,5,7-9</sup>.

Careful attention to the shape and angle at which the gutters are placed on the house can improve the flow rate into the reservoir. Water should not be allowed to remain stagnant in the gutter where it provides an excellent breeding ground for mosquitoes<sup>1</sup>.

## RESERVOIRS:

### *Types of Reservoirs:*

*Underground:* Underground tanks are best for year round use<sup>1-4,12</sup>. Appropriate measures should be taken to protect the tanks from freezing<sup>3,4,12</sup>. Underground tanks have less chance for contamination and evaporation<sup>13</sup>. However, care and maintenance are needed to ensure the structural integrity of the tank.

*Concrete:* Although concrete tanks have the reputation of being strong and long-lasting, they are subject to cracking, especially underground and should be checked for leaks yearly<sup>3</sup>. They are more permanent than other types of tanks because they are heavy and cannot be easily moved<sup>3,12</sup>. Concrete tanks can be poured into different shapes and sizes giving them an advantage over other tanks<sup>4,12</sup>.

*Fiberglass:* Fiberglass tanks are popular because they are lightweight, reasonably priced, long lasting, prefabricated and certified in many different sizes and shapes<sup>3,4,12</sup>. They are easy to transport<sup>3</sup>. Fiberglass tanks should include a coating to prevent sunlight from penetrating the tank<sup>3</sup>.

*Poly-plastic:* Poly-plastic tanks have similar benefits to Fiberglass tanks and they are readily available from several manufacturers in Alaska.

*Galvanized Steel:* Galvanized steel tanks are noted for their strength and for being lightweight and moveable<sup>3</sup>. Like roofs and gutters made from the same material, they are known to leach zinc when exposed to acidic rainwater<sup>1,3</sup>. For use in potable water systems, a certified inner membrane or liner is required.

*Redwood:* Redwood tanks have a reputation as a durable water storage tank with an average life expectancy of approximately 50 years<sup>3</sup>. Redwood has a natural preservative which makes it resistant to insects and decay<sup>3</sup>. Redwood does not tarnish or decay and requires no paint or protective outside coating<sup>3</sup>. However, redwood tanks will eventually leak due to fluctuations in water levels throughout the years. Therefore, for potable water, it is suggested that a certified inside liner be installed.

# CCHRC

*Liners, Bags and Membranes:* Liners, bags and membranes can be installed or applied inside reservoirs to prevent leakage or provide a low-cost, temporary collection tank or surface<sup>3</sup>. They also prevent leaching of chemicals from tanks such as zinc from newly galvanized tanks or lime from concrete tanks<sup>1</sup>. All liner materials should be certified for potable water by an appropriate source, such as NSF International.

*A Must if Potable:* All materials used in the reservoir system (membranes, liners, sealant, paints and the actual reservoir) should be certified for potable water by an accredited source<sup>2, 3, 12</sup>. All reservoirs should have a tight fitting cover which will prevent evaporation, mosquito breeding and will keep insects, birds, and animals from entering the tank<sup>2, 3</sup>. All tanks should have an overflow<sup>1, 2, 12</sup>. The tank should not only have adequate structural strength to withstand wear and tear but should have easy access for cleaning<sup>1-3, 12</sup>. Finally all potable water tanks should be located at least 10 feet away<sup>14</sup> from sources of pollution, such as septic tank fields,<sup>3, 12</sup> and should be located in a location accessible to a water truck in case of severe drought<sup>3, 12</sup>.

*Disinfection:* There are many methods in which reservoirs can be disinfected. The suggested method is ultraviolet (UV) light<sup>3</sup>. Ultraviolet light is an effective way to kill most bacteria and viruses. A UV system does not require that chemicals be added to the water, however the ultraviolet bulbs should be changed on a regular basis because they naturally lose their ability to transmit the proper wavelength. Ultraviolet disinfection systems can be installed with an audible and visual alarm indicating lamp failure. Ultraviolet systems should be installed with a properly sized pre-filter to remove any sediment that could potentially shadow the bacteria as the water passes the UV light<sup>3</sup>.

Chlorine is often added as part of the final drinking water treatment process<sup>1, 3, 6</sup>. However, chlorine also reacts with the organic matter naturally present in water, such as decaying leaves that could pass filters. This chemical reaction forms a group of chemicals known as disinfection by-products (DBPs). DBPs are known carcinogens in animals.

*Access and Cleaning:* The inside of the reservoir should be thoroughly scrubbed and rinsed before the system is put into use<sup>5, 12</sup>. This can be done with a soft brush, water, and baking soda<sup>4</sup> or a diluted bleach solution (both rinsed with ample amounts of water)<sup>5, 12</sup>. This can be followed with annual cleanings of the reservoir when the tank can be drained and emptied of accumulated sediment<sup>5</sup>; cracks can be patched at this time with non-toxic sealant<sup>4, 5</sup>. It is important to have good ventilation when working inside of the tank<sup>5, 12</sup>. In general, a manhole and a vent for cleaning purposes are suggested as standards for reservoirs, and regular cleaning helps to improve the quality of

potable water<sup>5</sup>. Multi-tank systems are suggested if rainwater is the only source of water for the family<sup>4</sup>. Other tanks can be used while one of the tanks is being cleaned or maintained, without a stop in water use. Incoming and outgoing pipes can also be regularly maintained and cleaned for optimal water flow<sup>5</sup>.

After the system is completely operational, but before any water is consumed, have the water tested by a laboratory certified by the Environmental Protection Agency to ensure that the water is safe to drink.

## **PUMPS:**

Water pumps should be approved for potable water by the Food and Drug Administration (FDA), NSF, or Underwriters Laboratories Inc. (UL). (<http://www.ul.com/>).

## **FILTERS:**

The recommended filter size for drinking water is 1 micron. A cartridge this size will remove any particle which is 1 micron or larger. Filters should be certified under NSF Standard 53. The Alaska Department of Environmental Conservation (ADEC) has issued a list of approved filters, which can be found at <http://www.state.ak.us/dec/deh/water/filtration.htm>.

Activated carbon filters can be used to remove any unpleasant appearance, odor, and taste. Carbon is best at removing organic chemicals and chlorine.

Internet Web Site:  
[www.cchrc.org](http://www.cchrc.org)

Phone: 907-457-3454  
Fax: 907-457-3456

The Borealis Bldg.  
515 7th Ave, Suite 340  
Fairbanks, AK 99701



COLD CLIMATE HOUSING RESEARCH CENTER

## References

1. Domestic Roofwater Harvesting, Rainwater Harvesting Technology, <http://www.eng.warwick.ac.uk/DTU/rwh/components1.html#comp> (Victoria, Australia)
2. Rainwater Harvesting System Guidelines, Associated General Contractors of WA, [http://www.agcwa.com/Public/education\\_foundation/env\\_reg/resources/Rainwater\\_guidelines.PDF](http://www.agcwa.com/Public/education_foundation/env_reg/resources/Rainwater_guidelines.PDF) (Washington)
3. Texas Guide to Rainwater Harvesting, <http://www.twdb.state.tx.us/publications/reports/RainHarv.pdf> (Texas)
4. Water Cistern Construction for Small Houses, The University of Alaska Fairbanks Cooperative Extension Service Program (Translated from Norway)
5. Rainwater Harvesting Systems for Montana, <http://www.montana.edu/wwwpb/pubs/mt9707.html> (Montana)
6. The Metamorphous of a Home Water System, <http://geocites.com/soarliving/homewater/homewater.html> (Houston, Texas)
7. TRS, Is Rooftop Runoff Really Clean?, *Watershed Protection Techniques*, 1, 2, 84-85, 1994 (Australia, Washington, and Wisconsin)
8. Simmons, G., Hope, V., Lewis, G., Whitmore, J., and Gao, W. Contaminations of Potable Roof-Collected Rain water in Auckland, New Zealand, *Water Research*, 35, 6, 1518-1524, 2001 (New Zealand)
9. Gould, J.E., McPherson, H. J. Bacteriological Quality of Rainwater in Roof and Ground Catchment Systems in Botswana, *Water International*, 12, 135-138, 1987
10. Yaziz, M. I., Gunting, H., Sapri, N., and Ghazali, A. W. Variations in Rainwater Quality From Roof Catchments, *Water Research*, 23, 6, 761-765, 1989 (Malaysia)
11. Rainwater Harvesting and Purification System, <http://www.rdrop.com/users/krishna/rainwatr.htm> (Portland, OR)
12. Montana Standards for Cisterns for Individual Non-Public Systems [http://www.deq.statemt.us/wqinfo/circulars/circular%2017\\_FINAL.pdf](http://www.deq.statemt.us/wqinfo/circulars/circular%2017_FINAL.pdf) (Montana)
13. Lye, Dennis J. Microbiology of Rainwater Cisterns Systems: A Review, *Journal of Environmental Health Science Health*, A27, 8, 2123-2166, 1992 (Current catchment systems in United States)
14. Department of Environmental Conservation, 18 ACC 72, Wastewater Disposal, <http://www.state.ak.us/dec/title18/wpfiles/72mas.pdf>

Comments or further information on this and other studies visit our website at [www.cchrc.org](http://www.cchrc.org) or contact the Cold Climate Housing Research Center at (907) 457-3454.