



Source Water Assessment

A Hydrogeologic Susceptibility and
Vulnerability Assessment for
Salmon Falls Resort,
Ketchikan, Alaska
PWSID #121131

DRINKING WATER PROTECTION PROGRAM REPORT NO. 734

Alaska Department of Environmental Conservation

Source Water Assessment for Salmon Falls Resort Ketchikan, Alaska PWSID #121131

DRINKING WATER PROTECTION PROGRAM REPORT NO. 734

The Drinking Water Protection Program (DWPP) is producing Source Water Assessments in compliance with the Safe Drinking Water Act Amendments of 1996. Each assessment includes a delineation of the source water area, an inventory of potential and existing contaminant sources that may impact the water, a risk ranking for each of these contaminants, and an evaluation of the potential vulnerability of these drinking water sources.

These assessments are intended to provide public water systems owners/operators, communities, and local governments with the best available information that may be used to protect the quality of their drinking water. The assessments combine information obtained from various sources, including the U.S. Environmental Protection Agency, Alaska Department of Environmental Conservation (ADEC), public water system owners/operators, and other public information sources. The results of this assessment are subject to change if additional data becomes available. It is anticipated this assessment will be updated every five years to reflect any changes in the vulnerability and/or susceptibility of public drinking water source. If you have any additional information that may affect the results of this assessment, please contact the Program Coordinator of DWPP, (907) 269-7521.

CONTENTS

SECTION		Page
	Executive Summary	1
	Salmon Falls Resort Public Drinking Water System	1
	Salmon Falls Resort Drinking Water Protection Area	1
	Inventory of Potential and Existing Contaminant Sources	2
	Ranking of Contaminant Risks	2
	Vulnerability of Salmon Falls Resort Drinking Water System	2
	References	4

TABLES

TABLE		
	1. Definition of Zones	2
	2. Susceptibility	2
	3. Contaminant Risks	3
	4. Overall Vulnerability	3

APPENDICES

APPENDIX		
	A. Salmon Falls Resort Drinking Water Protection Area (Map 1)	
	B. Contaminant Source Inventory for Salmon Falls Resort (Table 1)	
	Contaminant Source Inventory and Risk Ranking for Salmon Falls Resort - Bacteria and Viruses (Table 2)	
	Contaminant Source Inventory and Risk Ranking for Salmon Falls Resort – Nitrates/Nitrites (Table 3)	
	Contaminant Source Inventory and Risk Ranking for Salmon Falls Resort – Volatile Organic Chemicals (Table 4)	
	C. Salmon Falls Resort Drinking Water Protection Area and Potential and Existing Contaminant Sources (Map 2)	
	D. Vulnerability Analysis for Contaminant Source Inventory and Risk Ranking for Salmon Falls Resort Public Drinking Water Source (Charts 1 – 7)	

Source Water Assessment for Salmon Falls Resort, Ketchikan, Alaska

Drinking Water Protection Program Alaska Department of Environmental Conservation

EXECUTIVE SUMMARY

The public water system for Salmon Falls Resort is a Class B (transient/non-community) water system consisting of one surface water intake from Second Waterfall Creek. The surface water intake received a susceptibility rating of **Very High**. A rating of High to Very High is typical for all surface water systems. Identified potential and current sources of contaminants for Salmon Falls Resort public drinking water source includes: septic systems; above-ground heating oil and gasoline tanks; water supply wells; and dirt/gravel highways and roads. These identified potential and existing sources of contamination include sources of bacteria and viruses, nitrates and/or nitrites, and volatile organic chemicals. Contaminant sources could potentially contribute bacteria and viruses, nitrates and/or nitrites, and volatile organic chemicals into the source waters. Overall, the public water sources for Salmon Falls Resort received a vulnerability rating of **High** for both bacteria and viruses; **Very High** for nitrates and nitrites, and **High** for volatile organic chemicals.

SALMON FALLS RESORT PUBLIC DRINKING WATER SYSTEM

Salmon Falls Resort public water system is a Class B (transient/non-community) water system. The system consists of one surface water intake at 16707 North Tongass Highway, Ketchikan, Alaska (See Map 1 of Appendix A). Ketchikan Gateway Borough and City is located on Revillagigedo Island, on Tongass Narrows, 235 miles south of Juneau, Alaska (please see the inset of Map 1 in Appendix A for location). Ketchikan is Alaska's southernmost major city, and the fourth largest. The population of Ketchikan is approximately 15,100.

Ketchikan averages about 160 inches of precipitation per year; and approximately 32 inches of snow. The groundwater underlying the area are recharged through the infiltration of precipitation and surface water. Groundwater sources in the region generally occur in the fractured bedrock and unconsolidated sediments deposited by glaciers and/or rivers. The elevation for Ketchikan is near sea level.

The most recent Sanitary Survey (June 17, 1998) does not indicate when the surface water intake was initially put into operation. The Survey does indicate that the intake was adequately constructed. An adequately constructed intake may provide protection against debris and contaminants from entering the system. The raw water is filtered and disinfected. There is a potential for runoff within the area surrounding the surface water.

This system operates seasonally from May 15 to September 30. It is unknown how many residents or non-residents are served by the public water system.

SALMON FALLS RESORT DRINKING WATER PROTECTION AREA

In order to evaluate whether a drinking water source is at risk, we must first evaluate what are the most likely pathways for surface contamination to reach the creek. These areas are determined by looking at the characteristics of the creek, surrounding contaminant sources, and the intake.

The most probable area for contamination to reach the drinking water system is the area that contributes water to the surface water body that water is being drawn from. This area is designated as the Drinking Water Protection Area (DWPA). Because releases of contaminants within the DWPA are most likely to impact the drinking water system, this area will serve as the focus for voluntary protection efforts.

The size and shape of the DWPAs were established based on aerial distances from the surface water body, and the watershed that recharges the surface water body. Please refer to the Guidance Manual for Class B Public Water Systems for additional information.

The DWPAs established for surface water systems by the ADEC are separated into three zones. These zones correspond to different distances from the surface water body, and the entire watershed that recharges the surface water body. The following is a summary of the three DWPA zones and their definitions.

Table 1. Definition of Zones

Zone	Definition
A	1,000 feet from the Surface Water Body
B	1 mile from the Surface Water Body
C	Entire Watershed

The DWPA for Salmon Falls Resort encompasses the entire watershed. Development in the vicinity of the surface water intake is limited to only Zone A (See Map 1 of Appendix A).

INVENTORY OF POTENTIAL AND EXISTING CONTAMINANT SOURCES

The Drinking Water Protection Program has completed an inventory of potential and existing sources of contamination within the Salmon Falls Resort DWPA. This inventory was completed through a search of agency records and other publicly-available information. Potential sources of contamination to the drinking water source include a wide range of categories and types. Potential drinking water contaminants are found within agricultural, residential, commercial, and industrial areas, but can also occur within areas that have little or no development.

For the basis of all Class B public water system assessments, three categories of drinking water contaminants were inventoried. They include:

- Bacteria and viruses;
- Nitrates and/or nitrites;
- Volatile organic chemicals

The sources are displayed on Map 2 of Appendix C and summarized in Table 1 of Appendix B.

RANKING OF CONTAMINANT RISKS

Once the potential and existing sources of contamination have been identified, they are assigned a ranking according to what type and level of risk they represent. Ranking of contaminant risks for a “potential” or “existing” source of contamination is a function of toxicity and volumes of specific contaminants associated with that source. Rankings include:

- Low;
- Medium;
- High; and
- Very High.

The TOT for contaminants within the water varies and is dependent on the physical and chemical characteristics of each contaminant. Bacteria and Viruses are only inventoried in Zones A and B because of their short life span.

Tables 2 through 4 in Appendix B contain the ranking of potential and existing sources of contamination with respect to bacteria and viruses, nitrates and/or nitrites, and volatile organic chemicals.

VULNERABILITY OF SALMON FALLS RESORT DRINKING WATER SYSTEM

Vulnerability of a drinking water source to contamination is a combination of two factors:

- Natural susceptibility; and
- Contaminant risks.

Each of the three categories of drinking water contaminants has been analyzed and an overall vulnerability score of 30 to 100 is ultimately assigned:

$$\begin{aligned}
 &\text{Natural Susceptibility (30 – 50 points)} \\
 &+ \\
 &\text{Contaminant Risks (0 – 50 points)} \\
 &= \\
 &\text{Vulnerability of the} \\
 &\text{Drinking Water Source to Contamination (30 – 100).}
 \end{aligned}$$

A score for the Natural Susceptibility is achieved by analyzing the properties of the surface water source.

$$\begin{aligned}
 &\text{Natural Susceptibility} \\
 &(\text{Susceptibility of the Surface Water Source}) \\
 &(30 – 50 Points)
 \end{aligned}$$

The surface water intake for Salmon Falls Resort is in Second Waterfall Creek. Because Second Waterfall Creek is recharged by surface water runoff and precipitation, contaminants at or near the creek have the potential to adversely impact this drinking water source. Table 2 shows the Overall Susceptibility score and rating for Salmon Falls Resort.

Table 2. Natural Susceptibility

	Score	Rating
Natural Susceptibility	45	Very High

Contaminant risks to a drinking water source depend on the type, number or density, and distribution of contaminant sources. This data has been derived from an examination of existing or historical contamination that has been detected at the drinking water source through routine sampling. It also evaluates potential sources of contamination. Table 3 summarizes the Contaminant Risks for each category of drinking water contaminants.

Table 3. Contaminant Risks

Category	Score	Rating
Bacteria and Viruses	30	High
Nitrates and/or Nitrites	40	Very High
Volatile Organic Chemicals	25	Medium

Appendix D contains seven charts, which together form the ‘Vulnerability Analysis’ for a source water assessment for a public drinking water source. Chart 1 analyzes the ‘Susceptibility of the Surface Water Source’ to contamination by looking at the construction of the intake and its surrounding area and naturally-occurring attributes of the water source and influences on the groundwater system that might lead to contamination. Chart 2 analyzes ‘Contaminant Risks’ for the drinking water source with respect to bacteria and viruses. The ‘Contaminant Risks’ portion of the analysis considers potential sources of contaminants as well as a review of contamination that has or may have occurred, but has not arrived or been detected at the surface water. Chart 3 contains the ‘Vulnerability Analysis for Bacteria and Viruses.’ Charts 4 through 7 contain the Contaminant Risks and Vulnerability Analyses for nitrates and nitrites and volatile organic chemicals, respectively.

Table 4 contains the overall vulnerability scores (30 – 100) and ratings for each of the three categories of drinking water contaminants. Note: scores are rounded off to the nearest five.

Table 4. Overall Vulnerability

Category	Score	Rating
Bacteria and Viruses	75	Very High
Nitrates and Nitrites	85	Very High
Volatile Organic Chemicals	70	High

Tables 2 through 4 in Appendix B contain the ranking of potential and existing sources of contamination with respect to bacteria and viruses, nitrates and/or nitrites, and volatile organic chemicals.

Bacteria and Viruses

The contaminant risk for bacteria and viruses is **High** with septic systems and roads located within Zone A representing the risks to the drinking water (See Chart 2 – Contaminant Risks for Bacteria and Viruses in Appendix D).

Only a small amount of bacteria and viruses are required to endanger public health. Positive samples results for bacteria and viruses have not been detected during recent water sampling of the system at the Salmon Falls Resort. Combining the contaminant risks with the overall natural susceptibility of the surface water source, the vulnerability of the surface water source to contamination by bacteria and viruses is **High**.

Nitrates and Nitrites

The contaminant risk for nitrates and nitrites is **Very High** with septic systems and roads representing the risks to this source of public drinking water (See Chart 4 - Contaminant Risks for Nitrates and/or Nitrites in Appendix D).

Sampling history for Salmon Falls Resort surface water indicates that nitrates have not been detected in the water. Due to the high solubility and weak retention by soil, nitrates are very mobile, moving at approximately the same rate as water.

After combining the contaminant risk for nitrates and nitrites with the natural susceptibility of the surface water source, the overall vulnerability of the surface water source to contamination by nitrates and nitrites is **Very High**.

Volatile Organic Chemicals

The contaminant risk for volatile organic chemicals is **Medium** with septic systems; aboveground heating oil and gasoline tanks; and roads creating the only known risks for volatile organic chemicals (See Chart 6 – Contaminant Risks for Volatile Organic Chemicals in Appendix D).

Sample results for volatile organic chemicals are not available. Combining the contaminant risk for volatile organic chemicals with the natural susceptibility of the surface water source, the overall vulnerability of the surface water source to contamination by volatile organic chemicals is **High**.

REFERENCES

Alaska Department of Community and Economic Development (ADCED), 2002 [WWW document]. URL http://www.dced.state.ak.us/mra/CF_BLOCK.cfm.

Alaska Geospatial Data Clearinghouse, 2003. URL: <http://agdc.usgs.gov/data/datasets.html>.

Gehrels, G.E., Berg, H.C., Geologic Map of Southeastern Alaska: U.S. Geological Survey Map (scale 1:600,000), Map I-1867, 1sheet.

King, P.B., compiler, 1969, Tectonic map of North America: US Geological Survey Map, (scale 1:5,000,000) 2 sheets.

United States Environmental Protection Agency (EPA), 2002 [WWW document]. URL: <http://www.epa.gov/safewater/mcl.html>.

APPENDIX A

Salmon Falls Resort Drinking Water Protection Area Location Map (Map 1)



Map 1: Salmon Falls Resort Drinking Water Protection Areas

PWSID: 121131.001

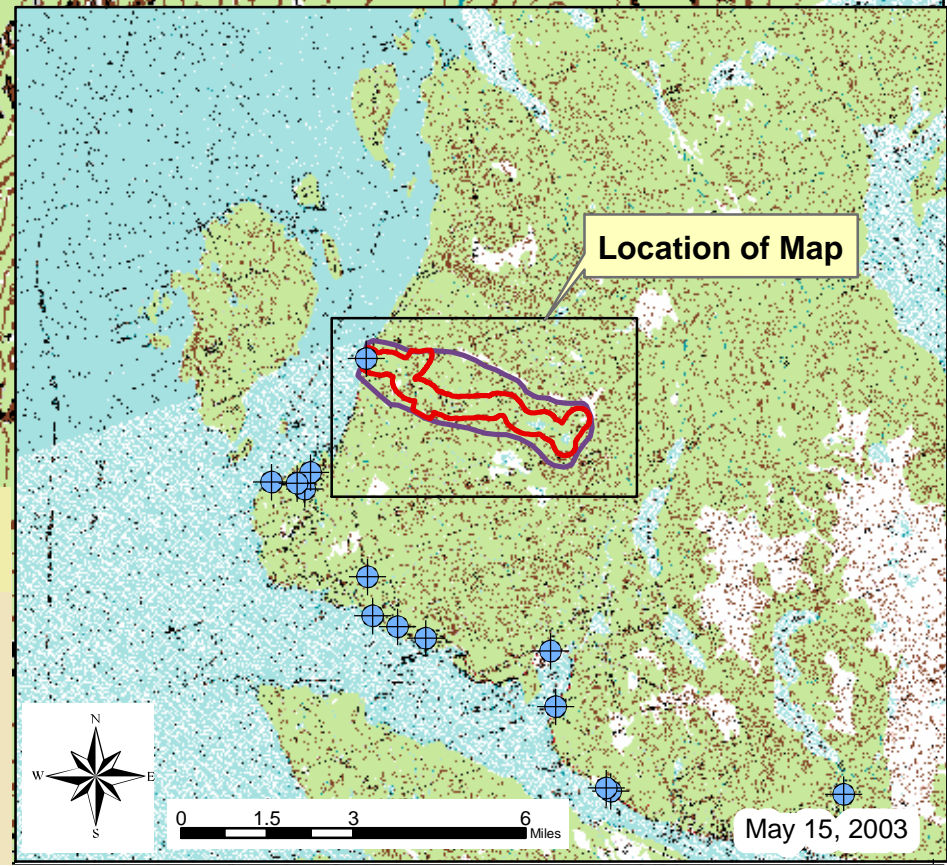


1:21,395

Data Sources:
Background image - USGS 1:63,000 mapping

Protection zones were delineated based upon streams noted on USFS Streams coverage.
For this PWS Zone C (entire watershed) covers the same area as Zone B (1 mile from surface water body)

- Legend**
- ⊕ Public Drinking Water Systems
 - Zone A Protection Area
1000 Feet from Surface Water Body
 - Zone C Protection Area
Entire Watershed



May 15, 2003

APPENDIX B

Contaminant Source Inventory and Risk Ranking for Salmon Falls Resort (Tables 1-4)

Table 1

*Contaminant Source Inventory for
Salmon Falls Resort, Ltd*

PWSID 121131.001

<i>Contaminant Source Type</i>	<i>Contaminant Source ID</i>	<i>CS ID tag</i>	<i>Zone</i>	<i>Map Number</i>	<i>Comments</i>
Injection wells (Class V) Large-Capacity Septic System (Drainfield Disposal Method)	D10	D10-1	A	2	Septic System for Salmon Falls Resort
Septic systems (serves one single-family home)	R02	R02-1	A	2	Residence Southeast of Salmon Falls Resort
Tanks, heating oil, residential (above ground)	R08	R08-1	A	2	Residence Southeast of Salmon Falls Resort
Tanks, gasoline (above ground)	T10	T10-1	A	2	Gas Tanks for Boats at Salmon Falls Resort
Tanks, heating oil, nonresidential (aboveground)	T14	T14-1	A	2	Heating Oil for Salmon Falls Resort
Tanks, heating oil, nonresidential (aboveground)	T14	T14-2	A	2	Heating Oil for Salmon Falls Resort
Water supply wells	W09	W09-1	A	2	Residence Southeast of Salmon Falls Resort
Highways and roads, dirt/gravel	X24	X24-1	A	2	Road Past Salmon Falls Resort
Highways and roads, dirt/gravel	X24	X24-2	A	2	Road to Residence Southeast of Salmon Falls Resort
Highways and roads, dirt/gravel	X24	X24-3	B	2	Road Southeast of Salmon Falls Resort

Contaminant Source Inventory and Risk Ranking for

PWSID 121131.001

Table 2

*Salmon Falls Resort, Ltd.
Sources of Bacteria and Viruses*

<i>Contaminant Source Type</i>	<i>Contaminant Source ID</i>	<i>CS ID tag</i>	<i>Zone</i>	<i>Risk Ranking for Analysis</i>	<i>Map Number</i>	<i>Comments</i>
Injection wells (Class V) Large-Capacity Septic System (Drainfield Disposal Method)	D10	D10-1	A	High	2	Septic System for Salmon Falls Resort
Septic systems (serves one single-family home)	R02	R02-1	A	Low	2	Residence Southeast of Salmon Falls Resort
Highways and roads, dirt/gravel	X24	X24-1	A	Low	2	Road Past Salmon Falls Resort
Highways and roads, dirt/gravel	X24	X24-2	A	Low	2	Road to Residence Southeast of Salmon Falls Resort
Highways and roads, dirt/gravel	X24	X24-3	B	Low	2	Road Southeast of Salmon Falls Resort

Contaminant Source Inventory and Risk Ranking for

PWSID 121131.001

Table 3

*Salmon Falls Resort, Ltd.
Sources of Nitrates/Nitrites*

<i>Contaminant Source Type</i>	<i>Contaminant Source ID</i>	<i>CS ID tag</i>	<i>Zone</i>	<i>Risk Ranking for Analysis</i>	<i>Map Number</i>	<i>Comments</i>
Injection wells (Class V) Large-Capacity Septic System (Drainfield Disposal Method)	D10	D10-1	A	High	2	Septic System for Salmon Falls Resort
Septic systems (serves one single-family home)	R02	R02-1	A	Low	2	Residence Southeast of Salmon Falls Resort
Highways and roads, dirt/gravel	X24	X24-1	A	Low	2	Road Past Salmon Falls Resort
Highways and roads, dirt/gravel	X24	X24-2	A	Low	2	Road to Residence Southeast of Salmon Falls Resort
Highways and roads, dirt/gravel	X24	X24-3	B	Low	2	Road Southeast of Salmon Falls Resort

Contaminant Source Inventory and Risk Ranking for

PWSID 121131.001

Table 4

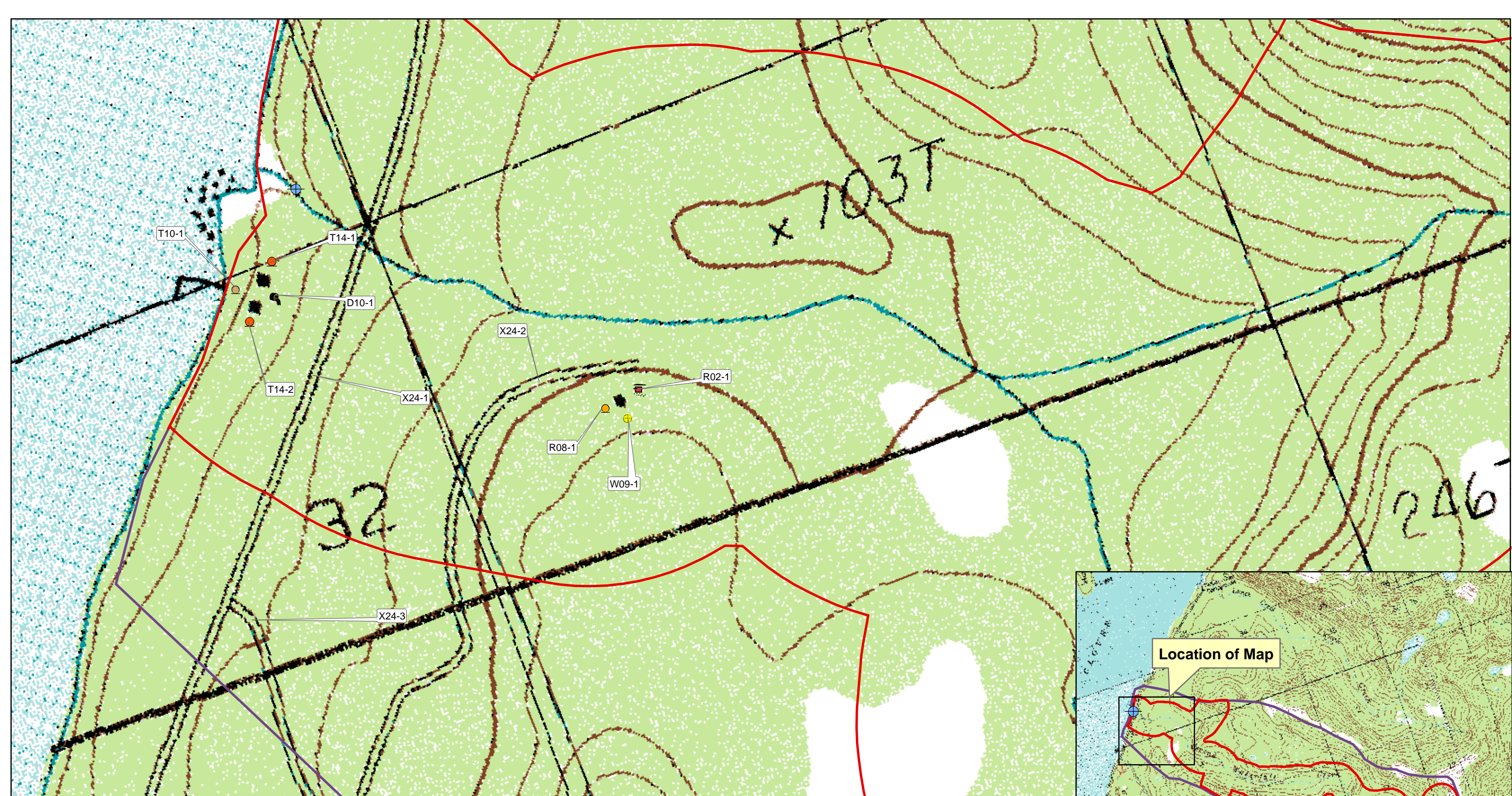
Salmon Falls Resort, Ltd.

Sources of Volatile Organic Chemicals

<i>Contaminant Source Type</i>	<i>Contaminant Source ID</i>	<i>CS ID tag</i>	<i>Zone</i>	<i>Risk Ranking for Analysis</i>	<i>Map Number</i>	<i>Comments</i>
Injection wells (Class V) Large-Capacity Septic System (Drainfield Disposal Method)	D10	D10-1	A	Low	2	Septic System for Salmon Falls Resort
Septic systems (serves one single-family home)	R02	R02-1	A	Low	2	Residence Southeast of Salmon Falls Resort
Tanks, heating oil, residential (above ground)	R08	R08-1	A	Low	2	Residence Southeast of Salmon Falls Resort
Tanks, gasoline (above ground)	T10	T10-1	A	Medium	2	Gas Tanks for Boats at Salmon Falls Resort
Tanks, heating oil, nonresidential (aboveground)	T14	T14-1	A	Low	2	Heating Oil for Salmon Falls Resort
Tanks, heating oil, nonresidential (aboveground)	T14	T14-2	A	Low	2	Heating Oil for Salmon Falls Resort
Highways and roads, dirt/gravel	X24	X24-1	A	Low	2	Road Past Salmon Falls Resort
Highways and roads, dirt/gravel	X24	X24-2	A	Low	2	Road to Residence Southeast of Salmon Falls Resort
Highways and roads, dirt/gravel	X24	X24-3	B	Low	2	Road Southeast of Salmon Falls Resort

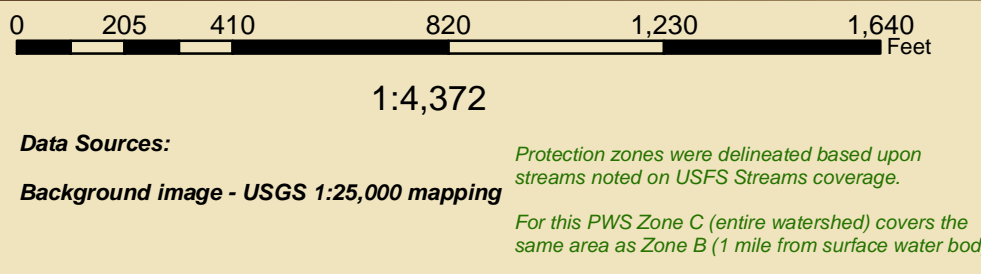
APPENDIX C

Salmon Falls Resort Drinking Water Protection Area and Potential and Existing Contaminant Sources (Map 2)

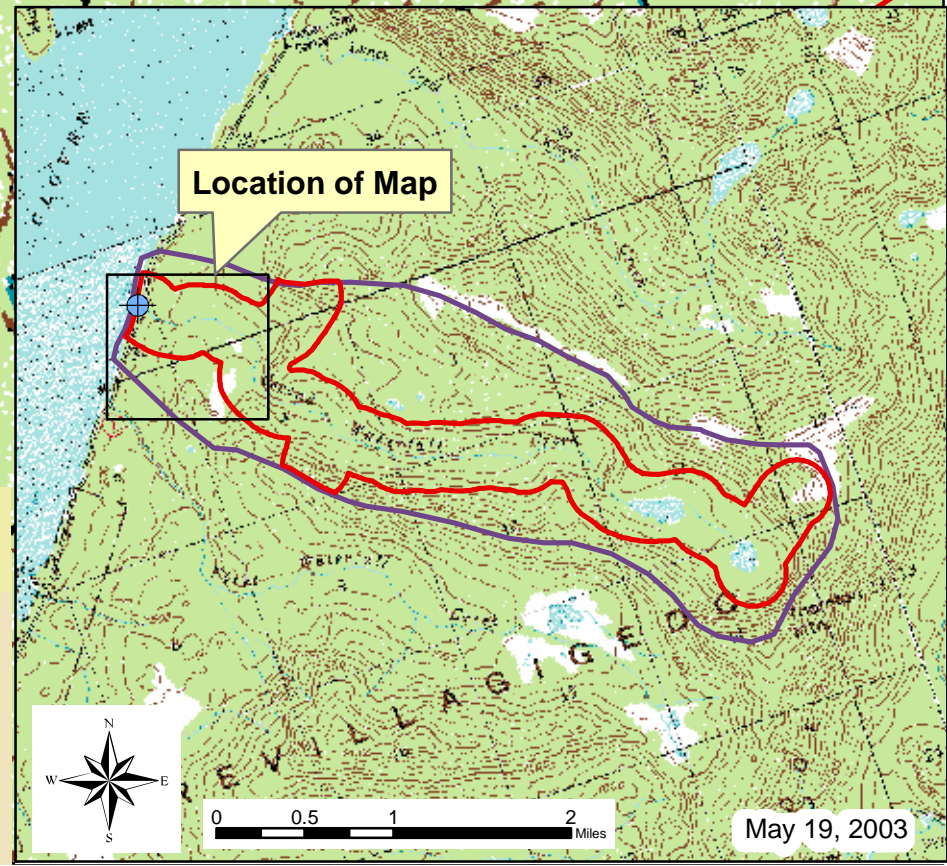


Map 2: Drinking Water Protection Areas for Salmon Falls Resort and Potential and Existing Sources of Contamination

PWSID: 121131.001



- Legend**
- Public Drinking Water Systems
 - Large Capacity Septic System (D10)
 - Single Family Septic System (R02)
 - Residential Heating Oil Tank (R08)
 - Gas Tank (T10)
 - Nonresidential Heating Oil Tank (T14)
 - Water Supply Well (W09)
- Zone A Protection Area**
 1000 Feet from Surface Water Body
- Zone C Protection Area**
 Entire Watershed



APPENDIX D

Vulnerability Analysis for Salmon Falls Resort Public Drinking Water Source (Charts 1-7)

Chart 1. Susceptibility of the surface water source - Salmon Falls Resort

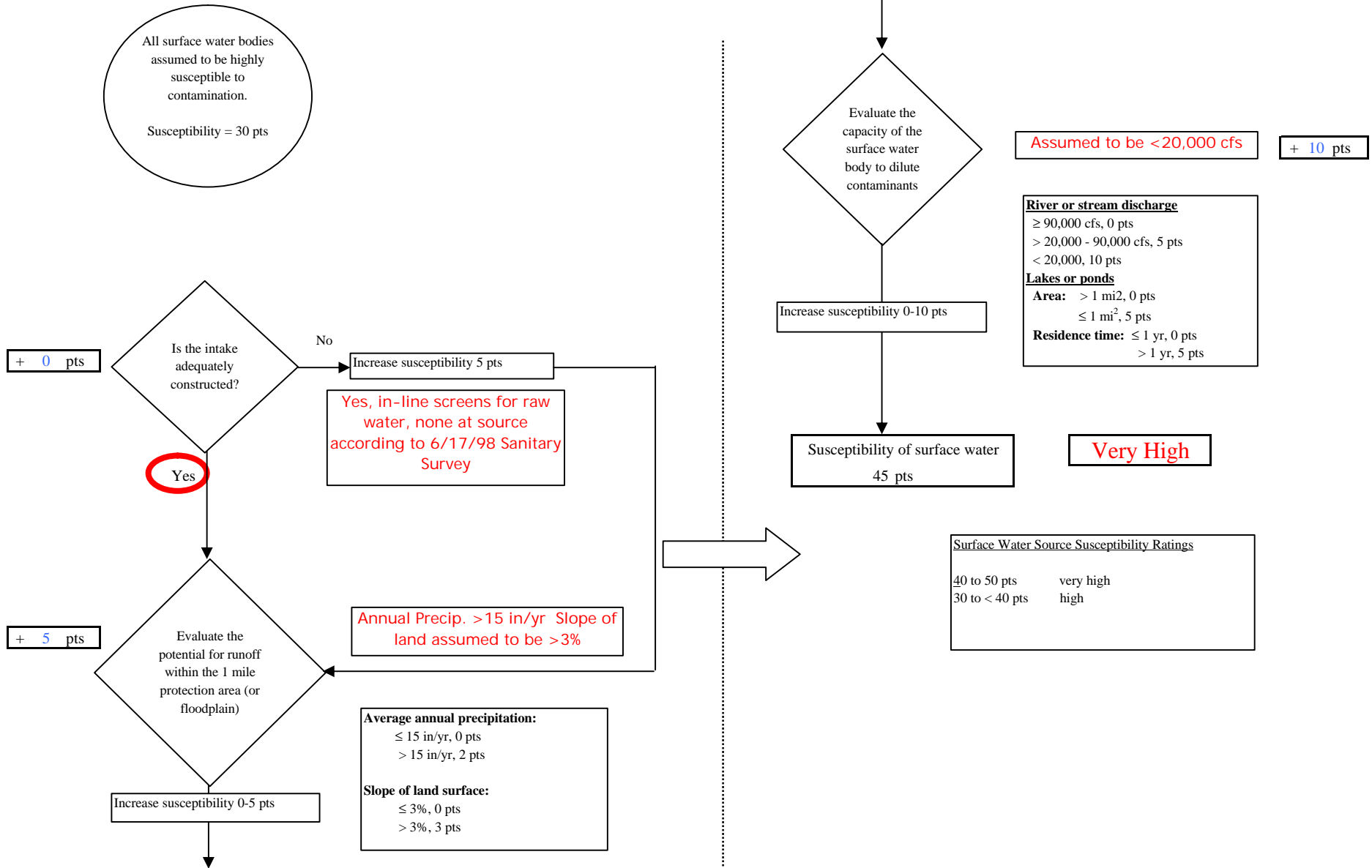
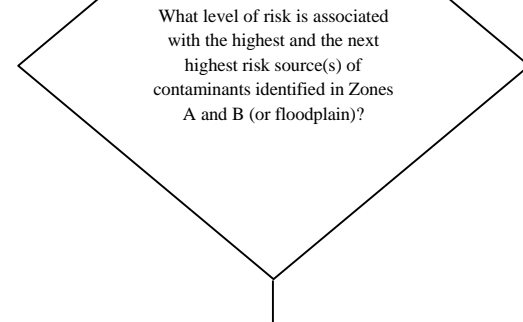
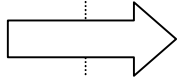
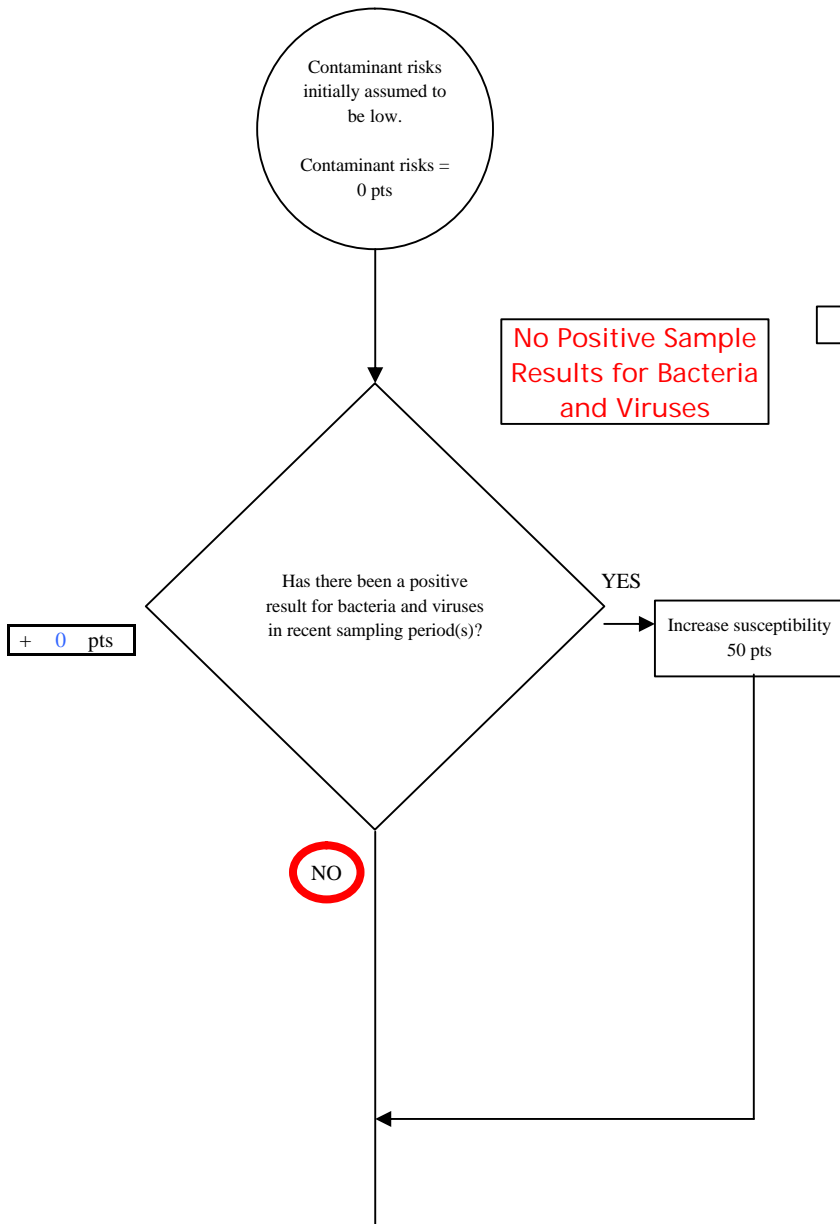


Chart 2. Contaminant risks for Salmon Falls Resort - Bacteria & Viruses



Risk Rankings for Contaminant Sources Identified in Zones A and B			
	Zone A	Zone B	Total
Very High(s)	0	0	0
High(s)	1	0	1
Medium(s)	0	0	0
Low(s)	2	0	2

	LOW 10 pts	MEDIUM 20 pts	HIGH 30 pts	VERY HIGH 40 pts
LOW	³ 10 sources + 10 pts	≥ 10 sources + 5 pts	≥ 20 sources + 5 pts	----
MEDIUM	----	≥ 2 sources + 5 pts	≥ 5 sources + 5 pts	≥ 10 sources + 5 pts
HIGH	----	----	≥ 1 source + 10 pts	≥ 2 sources + 10 pts
VERY HIGH	----	----	----	≥ 1 source + 10 pts

Matrix Score 30

Note: Septic systems, sewerlines, and roads are each assigned a risk ranking for each individual contaminant source in the CSI. The VA, however, counts these contaminant sources as a group and assigns a calculated number of either "lows" or "mediums" based on the density.

Chart 2. Contaminant risks for Salmon Falls Resort - Bacteria & Viruses

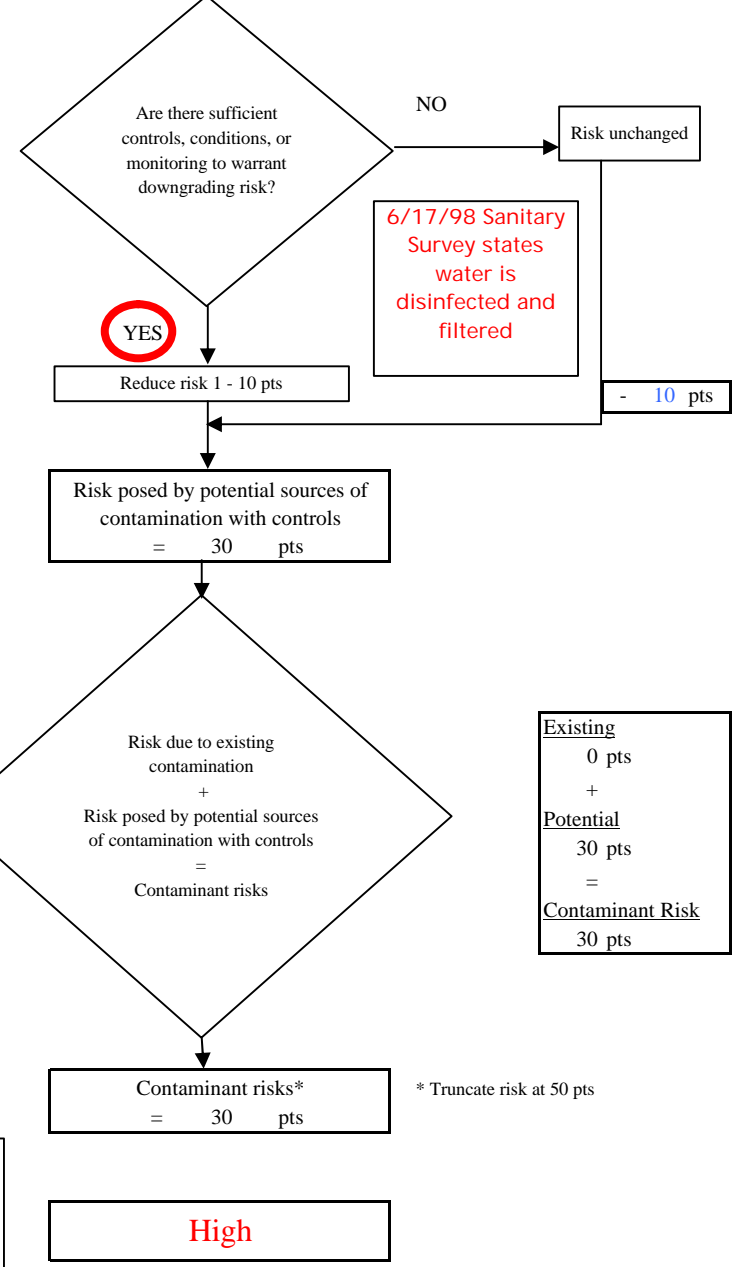
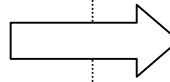
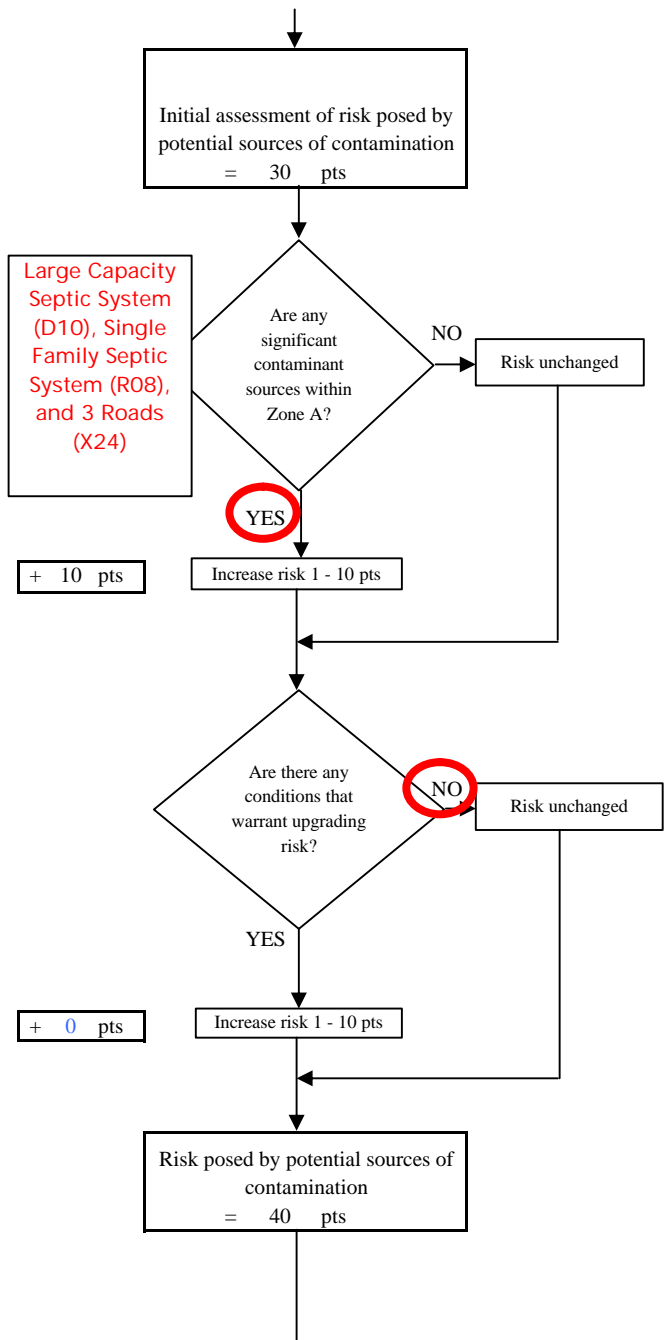


Chart 3. Vulnerability analysis for Salmon Falls Resort - Bacteria & Viruses

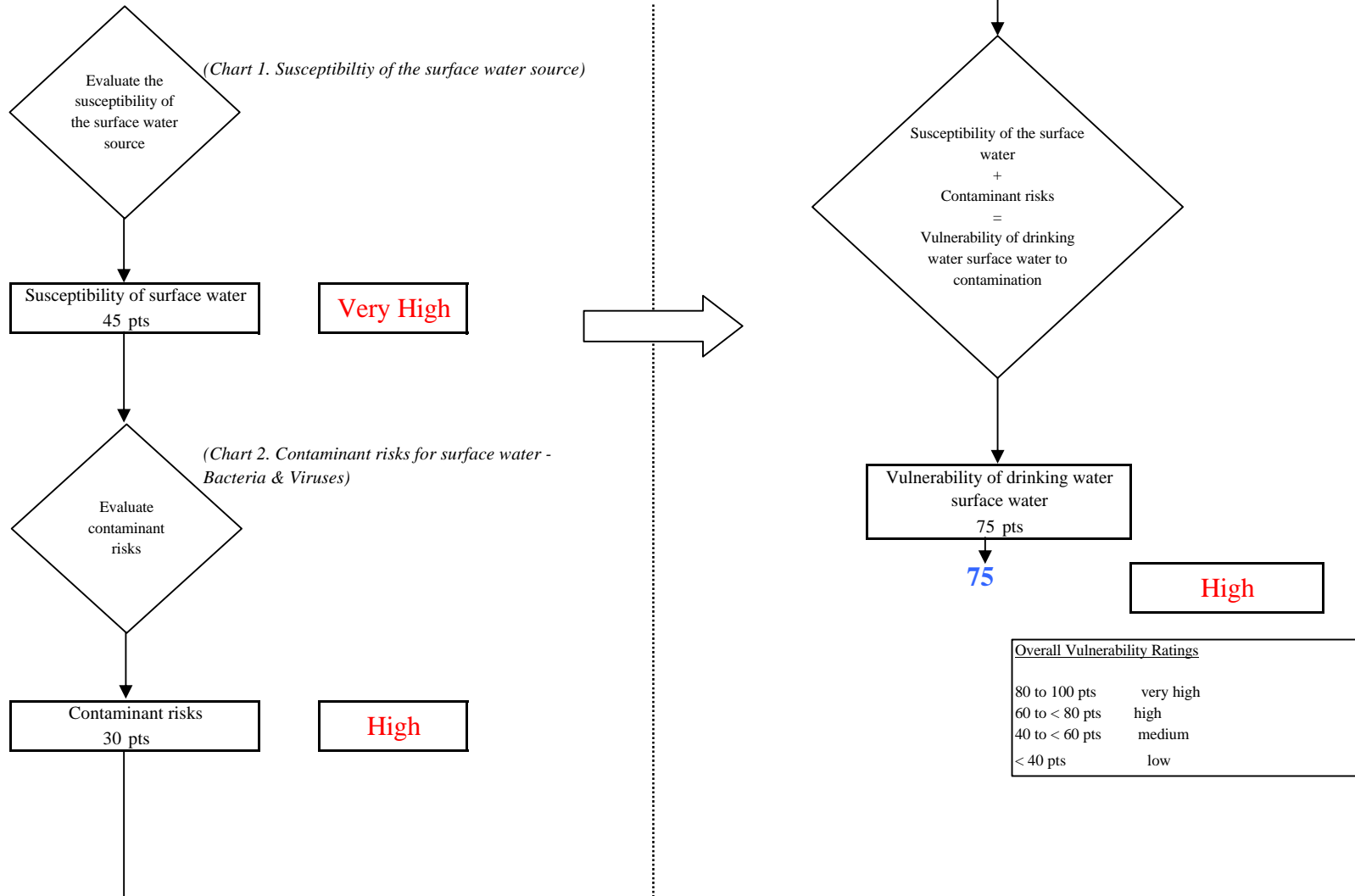


Chart 4. Contaminant risks for Salmon Falls Resort - Nitrates and Nitrites

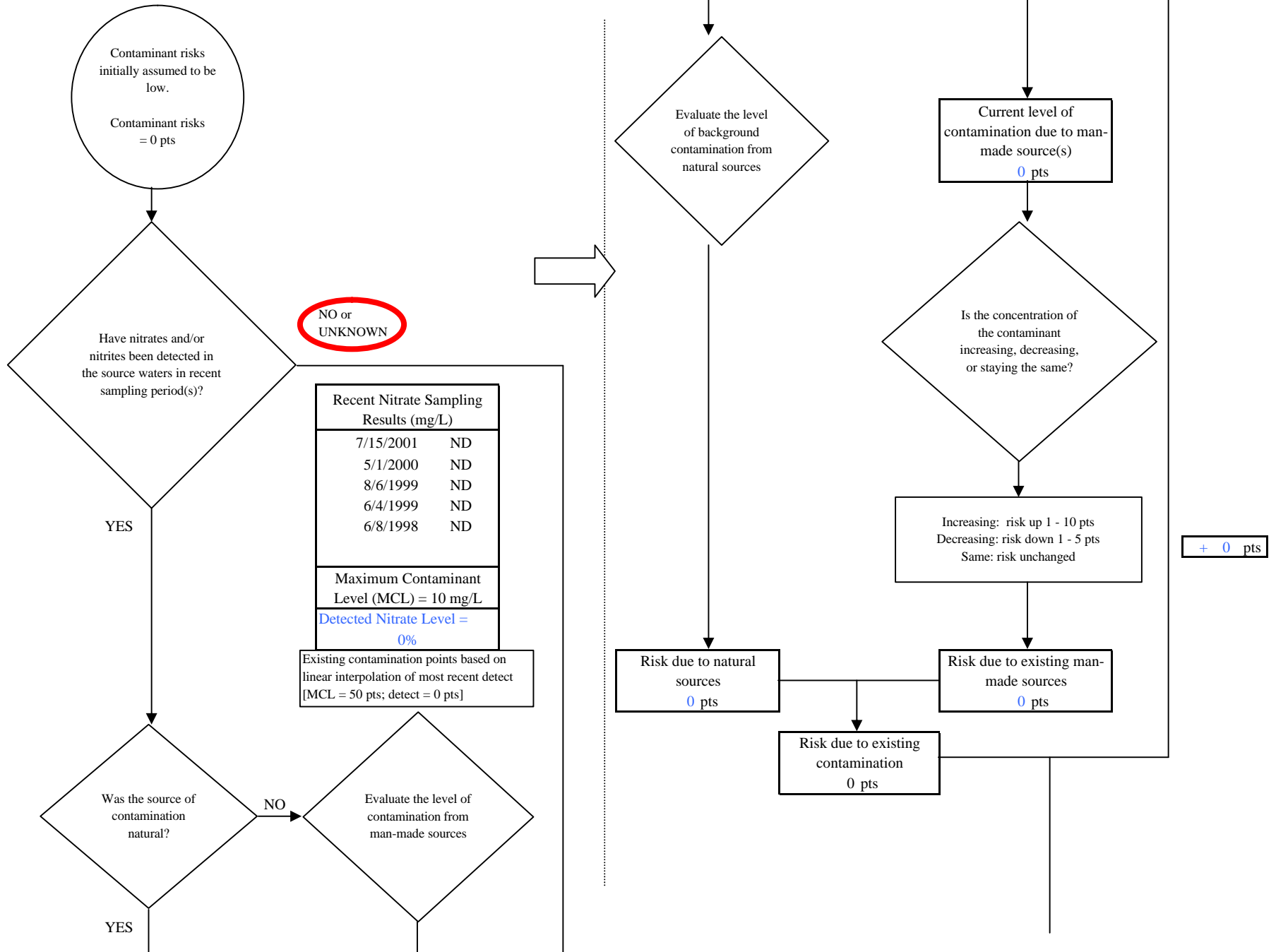


Chart 4. Contaminant risks for Salmon Falls Resort - Nitrates and Nitrites

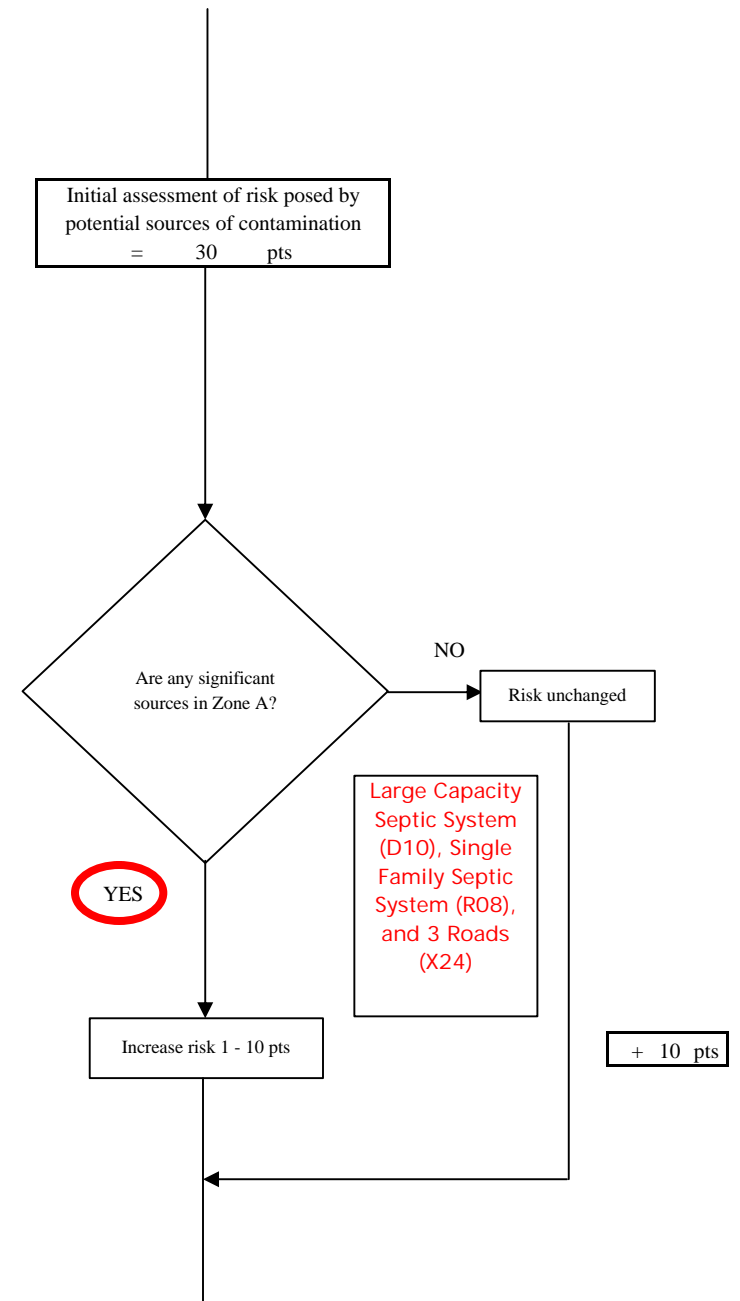
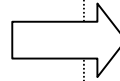
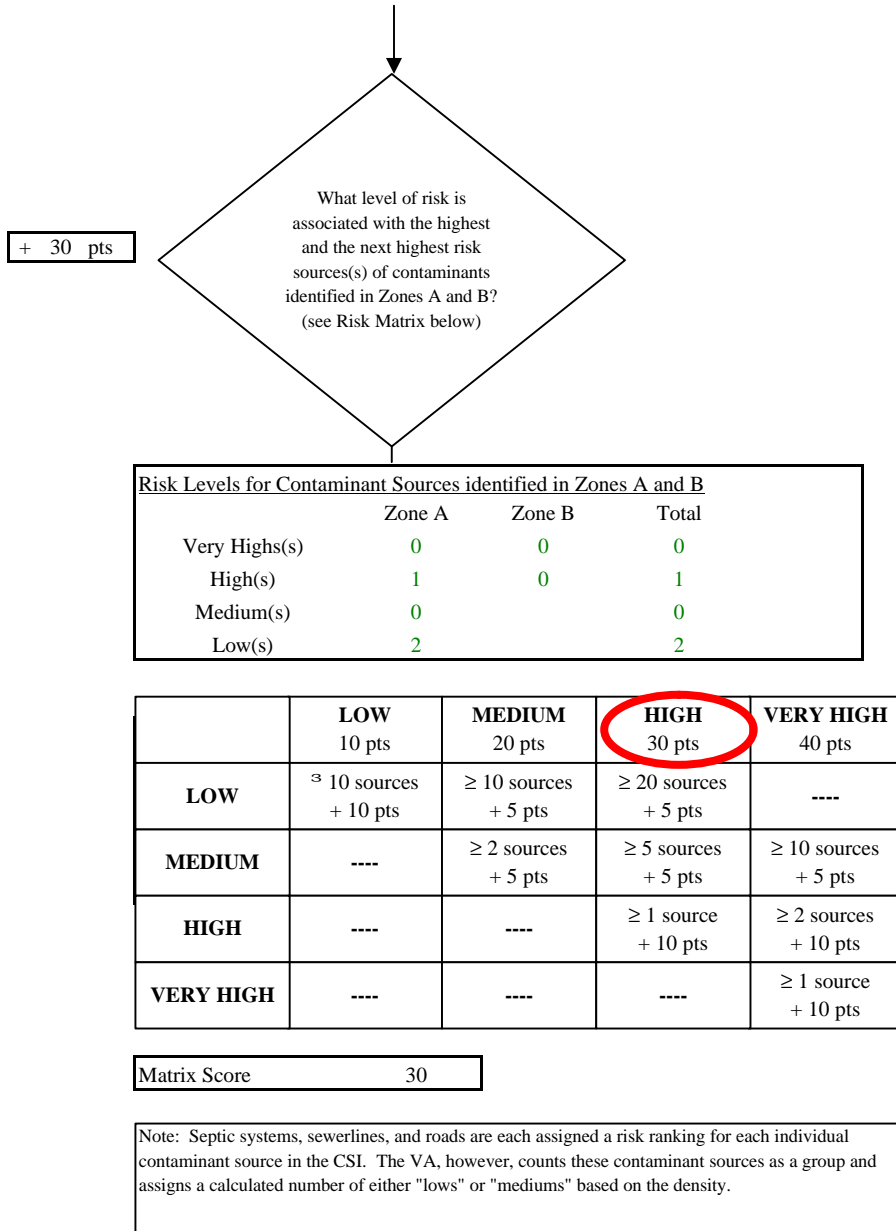


Chart 4. Contaminant risks for Salmon Falls Resort - Nitrates and Nitrites

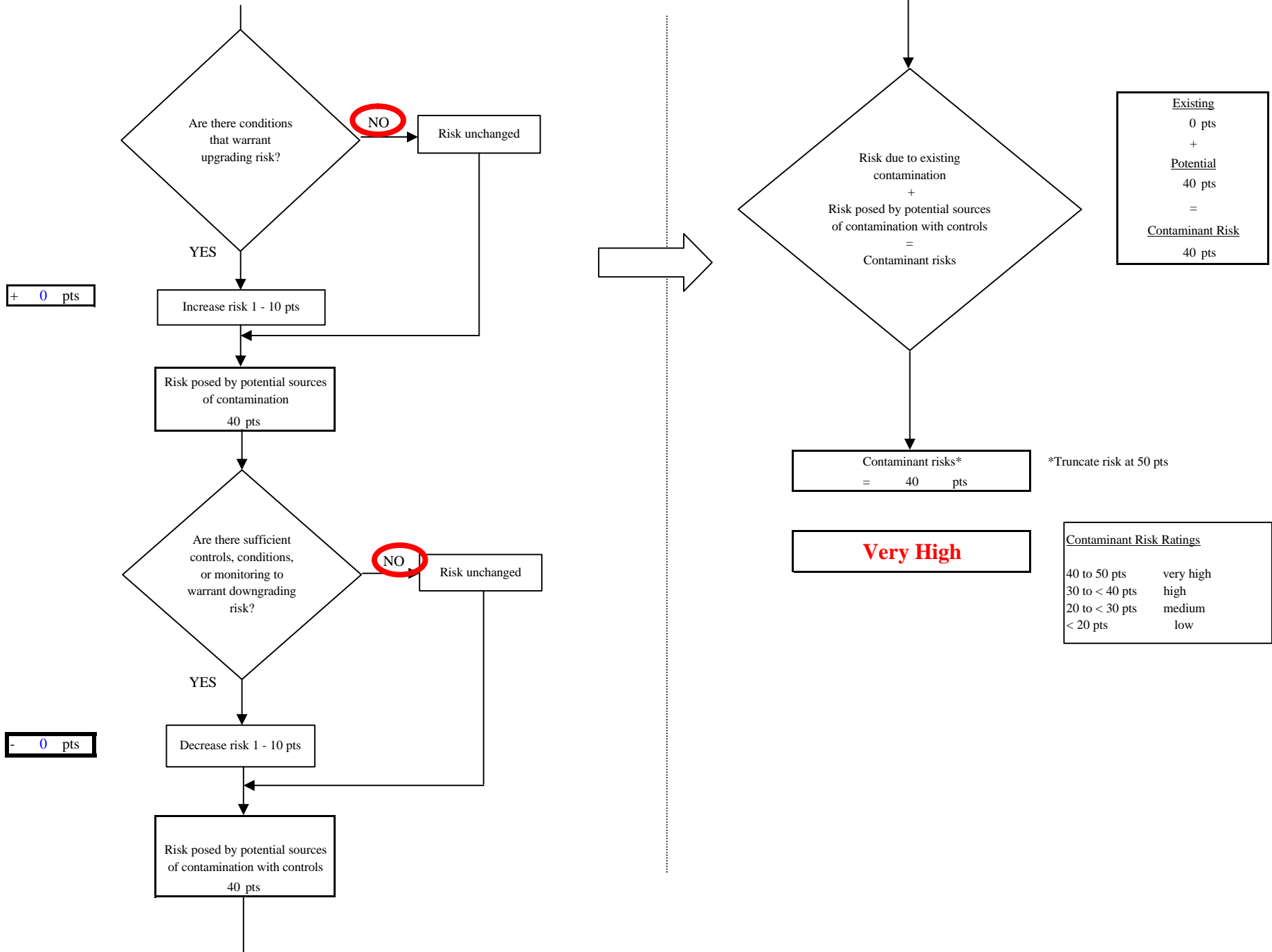


Chart 5. Vulnerability analysis for Salmon Falls Resort - Nitrates and Nitrites

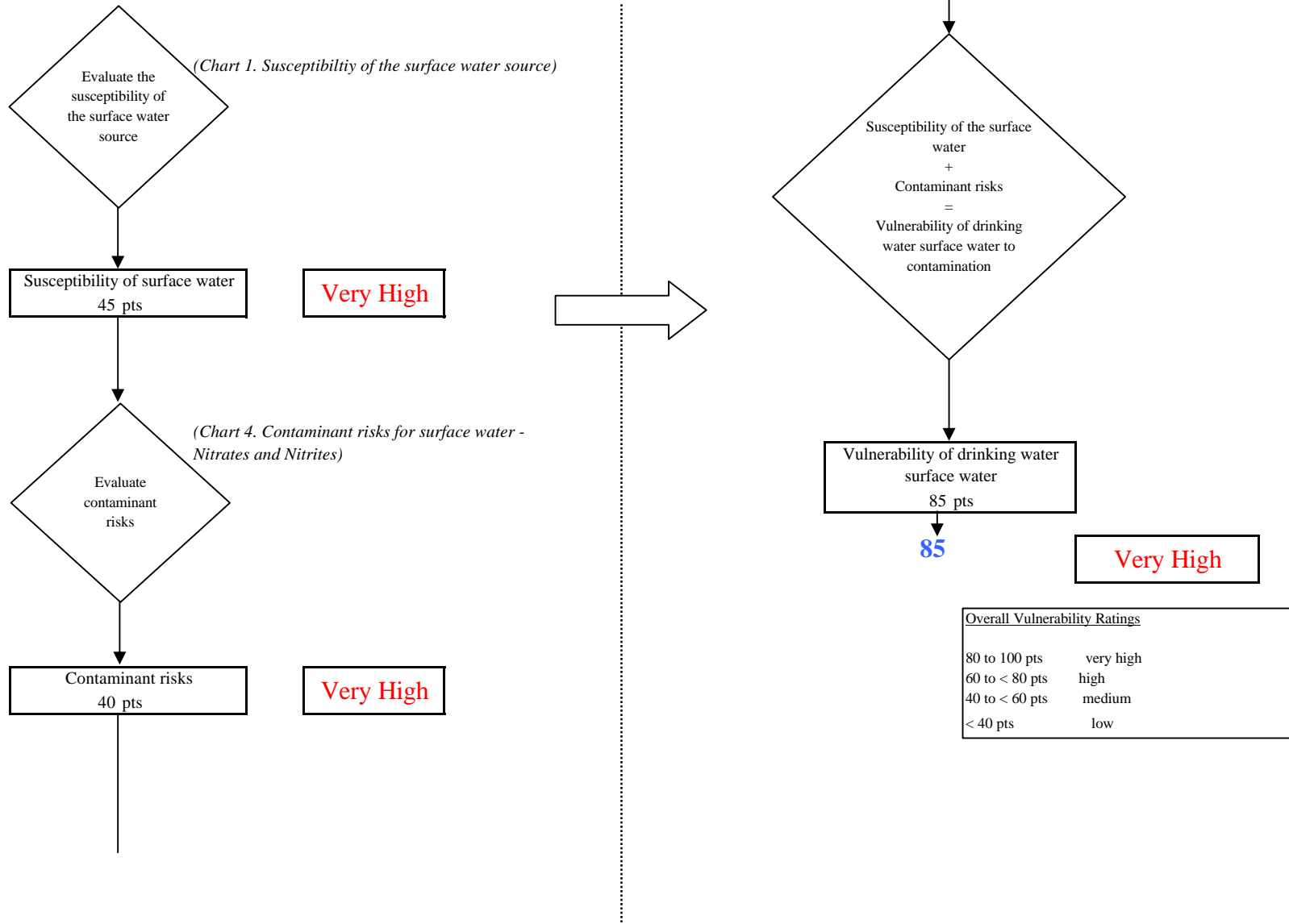


Chart 6. Contaminant risks for Salmon Falls Resort - Volatile Organic Chemicals

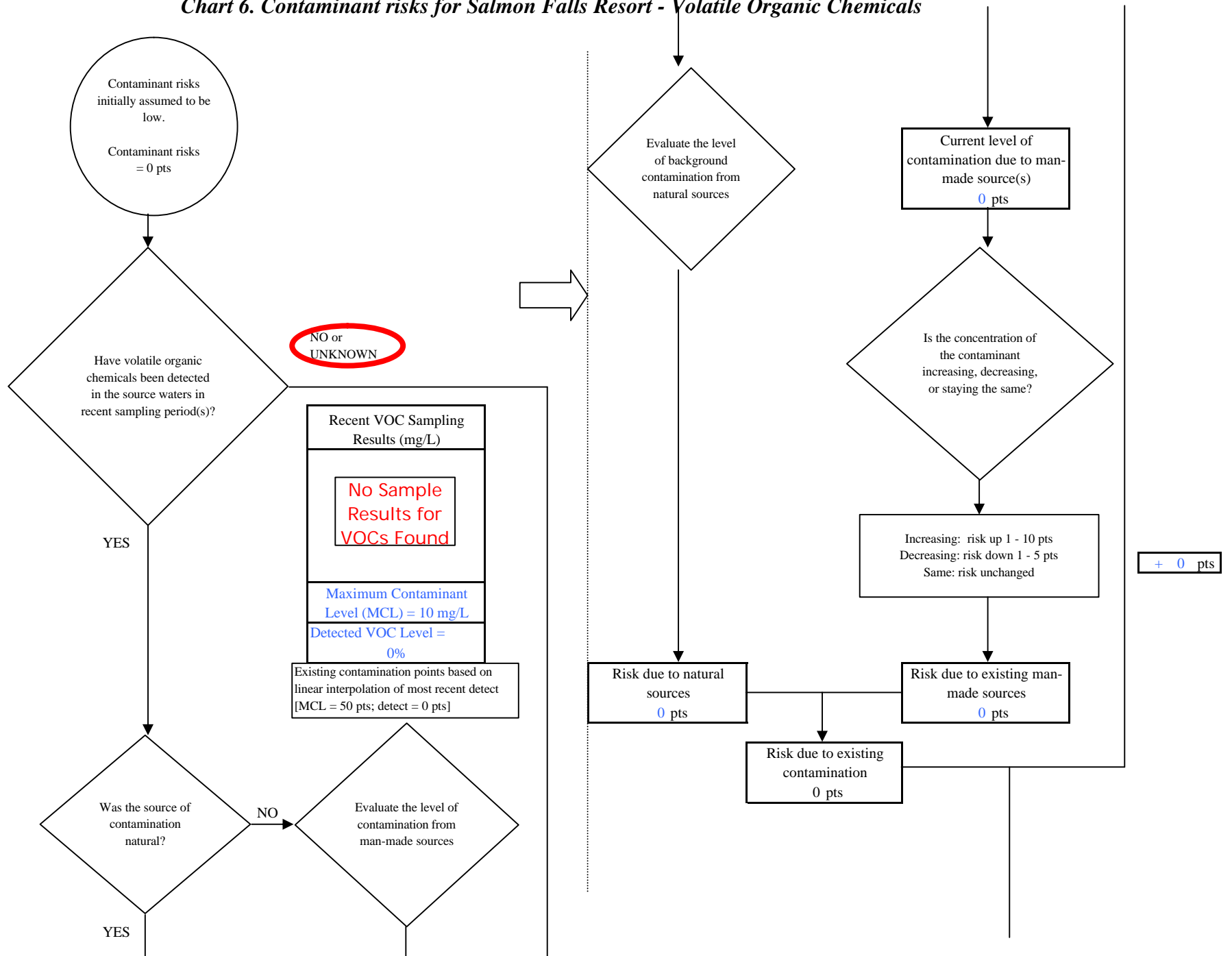
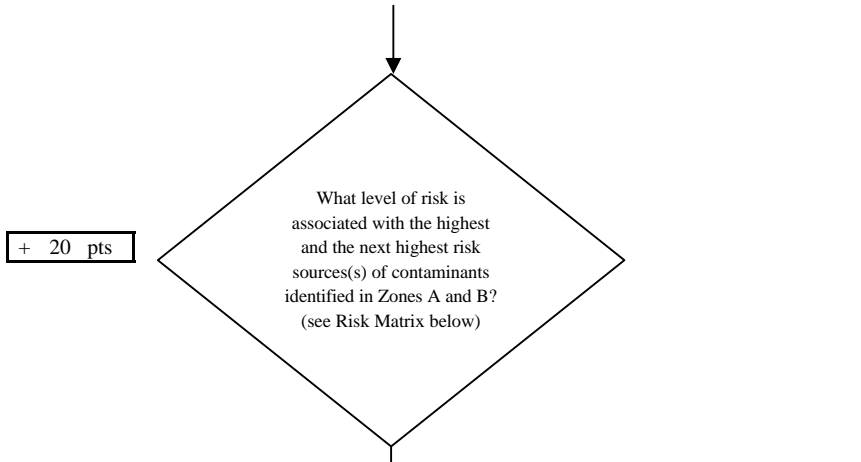


Chart 6. Contaminant risks for Salmon Falls Resort - Volatile Organic Chemicals



+ 20 pts

Risk Levels for Contaminant Sources identified in Zones A and B			
	Zone A	Zone B	Total
Very High(s)	0	0	0
High(s)	0	0	0
Medium(s)	1		1
Low(s)	6		6

	LOW 10 pts	MEDIUM 20 pts	HIGH 30 pts	VERY HIGH 40 pts
LOW	≥ 10 sources + 10 pts	≥ 10 sources + 5 pts	≥ 20 sources + 5 pts	----
MEDIUM	----	≥ 2 sources + 5 pts	≥ 5 sources + 5 pts	≥ 10 sources + 5 pts
HIGH	----	----	≥ 1 source + 10 pts	≥ 2 sources + 10 pts
VERY HIGH	----	----	----	≥ 1 source + 10 pts

Matrix Score 20

Note: Septic systems, sewerlines, and roads are each assigned a risk ranking for each individual contaminant source in the CSI. The VA, however, counts these contaminant sources as a group and assigns a calculated number of either "lows" or "mediums" based on the density.

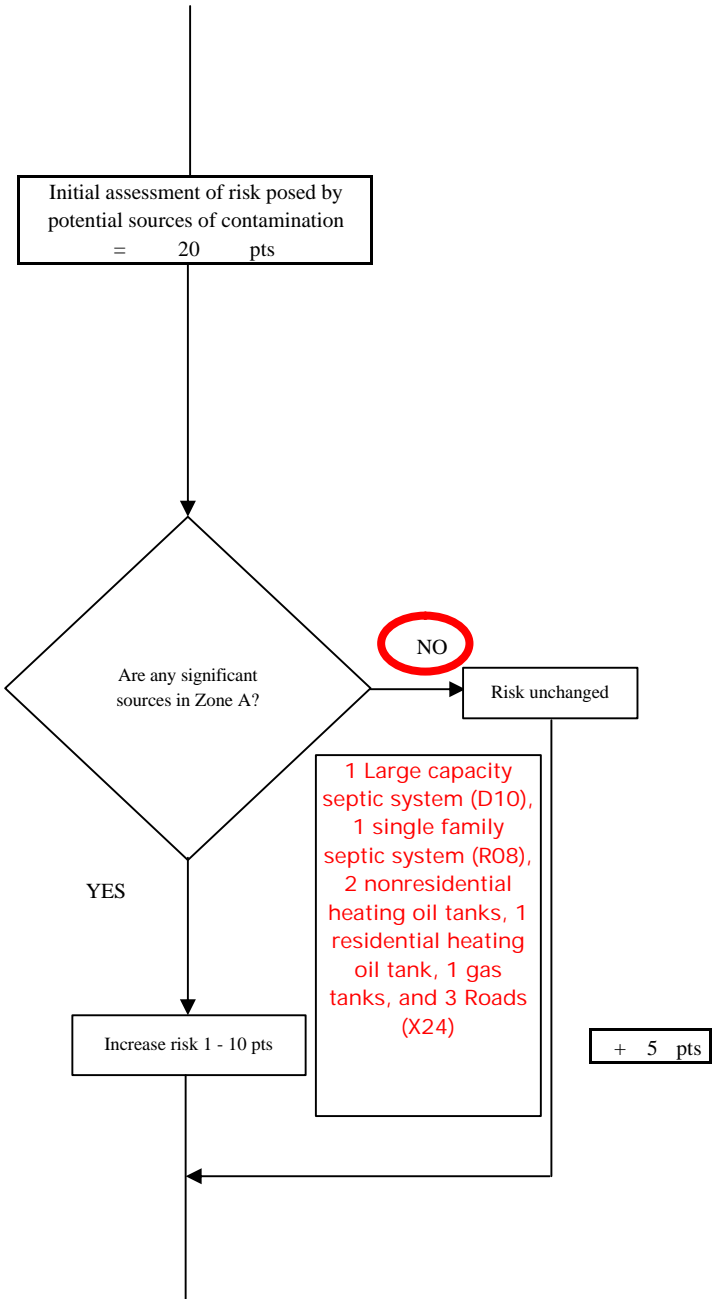
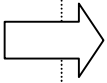


Chart 6. Contaminant risks for Salmon Falls Resort - Volatile Organic Chemicals

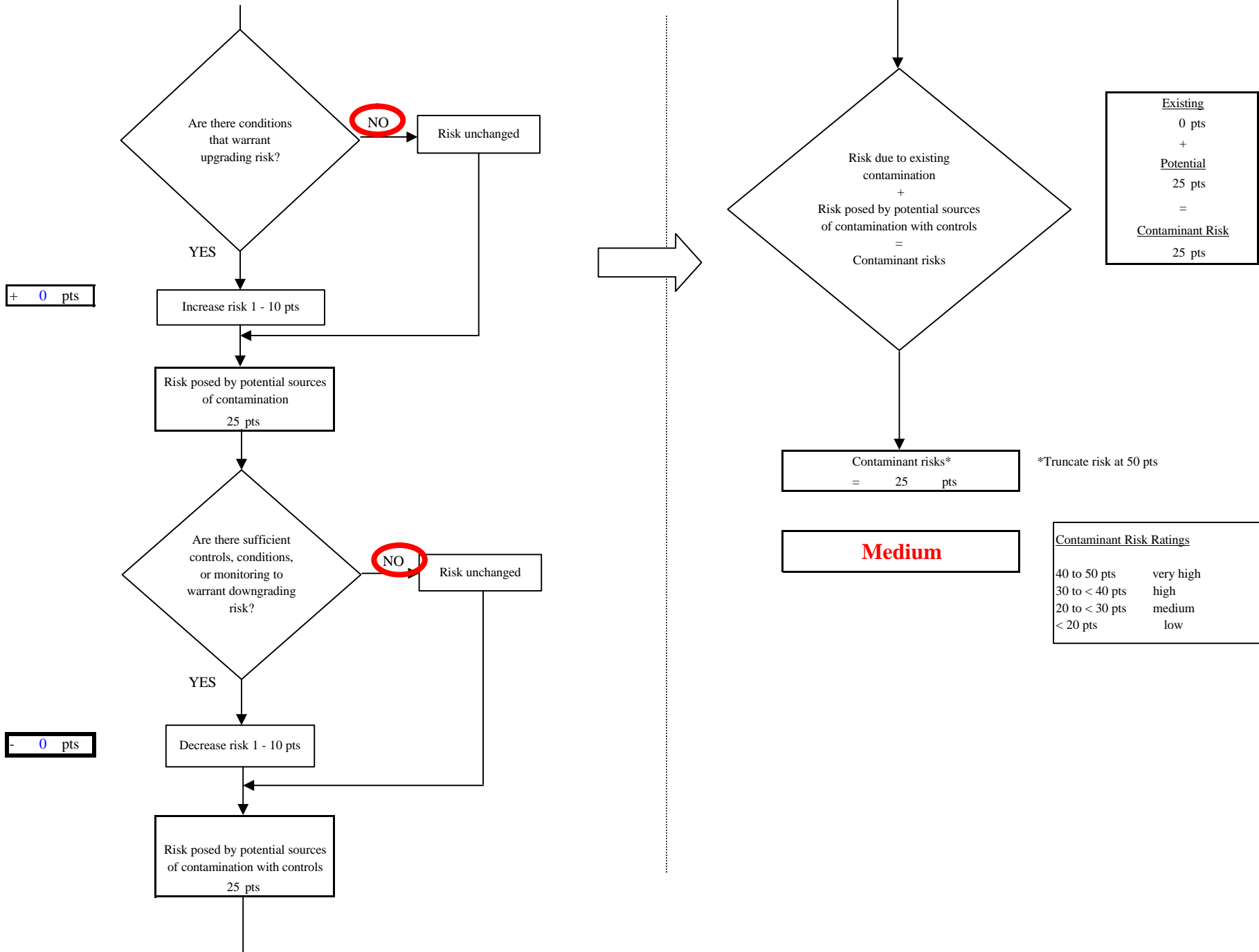


Chart 7. Vulnerability analysis for Salmon Falls Resort - Volatile Organic Chemicals

