



---

# **Source Water Assessment**

A Hydrogeologic Susceptibility and  
Vulnerability Assessment for  
**Peninsula Grace Brethren Church**

Drinking Water System,

Kenai area, Alaska

PWSID 245406.001

February 2004

DRINKING WATER PROTECTION PROGRAM REPORT 1418  
Alaska Department of Environmental Conservation

Source Water Assessment for  
**Peninsula Grace Brethren Church**  
Drinking Water System  
Kenai area, Alaska  
PWSID 245406.001

February 2004

DRINKING WATER PROTECTION PROGRAM REPORT 1418

The Drinking Water Protection Program (DWPP) is producing Source Water Assessments in compliance with the Safe Drinking Water Act Amendments of 1996. Each assessment includes a delineation of the source water area, an inventory of potential and existing contaminant sources that may impact the water, a risk ranking for each of these contaminants, and an evaluation of the potential vulnerability of these drinking water sources.

These assessments are intended to provide public water systems owners/operators, communities, and local governments with the best available information that may be used to protect the quality of their drinking water. The assessments combine information obtained from various sources, including the U.S. Environmental Protection Agency, Alaska Department of Environmental Conservation (ADEC), public water system owners/operators, and other public information sources. The results of this assessment are subject to change if additional data becomes available. It is anticipated this assessment will be updated every five years to reflect any changes in the vulnerability and/or susceptibility of public drinking water source. If you have any additional information that may affect the results of this assessment, please contact the Program Coordinator of DWPP, (907) 269-7521.

## CONTENTS

	Page		Page
Executive Summary	1	Inventory of Potential and Existing Contaminant Sources	2
Peninsula Grace Brethren Church Public Drinking Water System	1	Ranking of Contaminant Risks	2
Peninsula Grace Brethren Church Protection Area	1	Vulnerability of Peninsula Grace Brethren Church Drinking Water System	3
	1	References	7

## TABLES

TABLE	1. Definition of Zones	2
	2. Susceptibility	3
	3. Contaminant Risks	4
	3. Overall Vulnerability	4

## APPENDICES

APPENDIX	A. Peninsula Grace Brethren Church Drinking Water Protection Area (Map 1)
	B. Contaminant Source Inventory for Peninsula Grace Brethren Church (Table 1)
	Contaminant Source Inventory and Risk Ranking for Peninsula Grace Brethren Church—Bacteria and Viruses (Table 2)
	Contaminant Source Inventory and Risk Ranking for Peninsula Grace Brethren Church—Nitrates/Nitrites (Table 3)
	Contaminant Source Inventory and Risk Ranking for Peninsula Grace Brethren Church—Volatile Organic Chemicals (Table 4)
	Contaminant Source Inventory and Risk Ranking for Peninsula Grace Brethren Church—Heavy Metals, Cyanide, and Other Inorganic Chemicals (Table 5)
	Contaminant Source Inventory and Risk Ranking for Peninsula Grace Brethren Church—Synthetic Organic Chemicals (Table 6)
	Contaminant Source Inventory and Risk Ranking for Peninsula Grace Brethren Church—Other Organic Chemicals (Table 7)
	C. Peninsula Grace Brethren Church Drinking Water Protection Area and Potential and Existing Contaminant Sources (Map 2)
	D. Vulnerability Analysis for Contaminant Source Inventory and Risk Ranking for Peninsula Grace Brethren Church Public Drinking Water Source (Charts 1 – 14 )

# Source Water Assessment for Peninsula Grace Brethren Church Source of Public Drinking Water, Kenai area, Alaska

---

## Drinking Water Protection Program Alaska Department of Environmental Conservation

### EXECUTIVE SUMMARY

The public water system for Peninsula Grace Brethren Church is a Class A (non-transient/non-community) water system consisting of one well. The well is located off of Kalifornsky Beach Rd. The wellheads received a susceptibility rating of **Low** and the aquifer received a susceptibility rating of **Very High**. Combining these two ratings produces a **High** rating for the natural susceptibility of the well. Identified potential and current sources of contaminants for the Peninsula Grace Brethren Church include: large capacity septic systems, roads, residential septic systems, residential area, orchards/nurseries, automotive body shops, motor vehicle repair shops, motor vehicle waste disposal wells and vehicle storage. These identified potential and existing sources of contamination are considered as sources of bacteria and viruses, nitrates and/or nitrites, and volatile organic chemicals, inorganic chemicals, synthetic organic chemicals and other organic chemicals. Overall, the public water source for the Peninsula Grace Brethren Church received a vulnerability rating of **High** for bacteria/ viruses, volatile organic chemicals, inorganic chemicals, synthetic organic chemicals and other organic chemicals and **Very High** for nitrates/nitrites

### PENINSULA GRACE BRETHERN CHURCH PUBLIC DRINKING WATER SYSTEM

The Peninsula Grace Brethren Church public water system (PWS) is a Class A (non-transient/non-community) water system. The system consists of one well located off of Kalifornsky Beach Rd (See Map 1 of Appendix A). The City of Kenai is part of the Kenai Peninsula Borough, which is located directly south of the city of Anchorage (Please see the inset of Map 1 in Appendix A for location). The borough encompasses 25,600 square miles, of which only 15,700 square miles is land.

The Kenai Peninsula is broken into two distinct geographic areas; the Kenai Mountains and the Kenai Lowlands. Kenai and its surrounding communities are located in the Kenai Lowlands. Communities located within the Kenai Lowlands include Sterling, Soldotna, Kenai, Nikiski, Clam Gulch, Ninilchik, and Homer.

Communities located in the Kenai Mountains include: Cooper Landing, Moose Pass and Seward.

The Kenai Peninsula area topography varies from about 3,000 feet to 5,000 feet above sea level in the Kenai Mountains, the highest point being about 6,400 feet above sea level. The Kenai Peninsula is dotted with many lakes and small streams, including three large lakes (Kenai Lake, Skilak Lake, and Tustumena Lake) and two substantial rivers (Kenai River, and Kasilof River) (USGS 1915).

The Peninsula Grace Brethren Church water system is located within the Kenai Lowlands, which is a sub-province of the Cook Inlet-Susitna Lowland physiographic region. The Kenai Lowland is a glaciated coastal shelf situated west of the northeast-trending Kenai Mountains. Approximately 100 miles long, the coastal shelf is bordered on the west by Cook Inlet, on the east by Kenai Mountains, on the north by Turnagain Arm, and on the south by the Caribou Hills and Kachemak Bay. The following summary of regional geology and hydrogeology is based on studies by Bailey and Hogan (1995); Freethey and Scully (1980); Glass (1996); Hartman, et al. (1972); and Karlstrom (1964).

The Kenai Lowland is underlain by bedrock. Tertiary sedimentary bedrock is more than 500 feet below the city of Kenai airport, but is exposed along beach cliffs and road cuts near the southwest end of the lowland. Unconsolidated surficial deposits of Quaternary age include coastal deposits, glaciolacustrine deposits, glaciofluvial deposits, glacial moraine deposits, and periglacial wind deposits. Unconsolidated Quaternary cover on the lowlands generally thickens from south to North being thin or absent in the Homer area, and over 750 feet thick near Kenai.

The most significant groundwater resources of the Kenai Lowlands are contained in Quaternary coarse-grained sands and gravels. Flood plain, river terrace and other alluvial deposits are common aquifer materials in the area, and are characterized by high rates of recharge, and large saturated thicknesses. Other favorable materials include proglacial lake and associated river deposits and glacial outwash deposits consisting of meltwater sorted sand and gravel material.

Unsorted glacial moraine and drift deposits generally have poor groundwater yields, as do discontinuous layers of confining clays and silt that are common throughout the unconsolidated materials. The relatively thicker sequence of unconsolidated sediments in the northern portions of the Kenai Lowlands locally hosts thicker, more extensive clay aquitards and multiple aquifers.

The Kenai Peninsula area has a central water system; however, many homes and businesses in the area rely on individual wells for their water supply. Most of these wells are deep with depths between 50 and 200 feet. Static water levels in many of these wells are between 10 and 30 feet below the surface. Although groundwater quality can vary significantly in short distance, groundwater supplies are abundant in the area.

According well log the depth of the well is 33 feet. The well is completed in an unconfined aquifer consisting of sand and gravel. The static water level at the time of drilling (9/19/83) was 24 ft.

The Sanitary Survey (2001) indicates that the well is properly sealed. A properly installed sanitary seal may provide protection against contaminant from entering the source waters at the casing. The well is not located in a floodplain and the surface is sloped away from the wellhead. The well was constructed prior to grouting regulations and is not properly grouted. Proper grouting provides added protection against contaminants traveling along the well casing and into source waters.

This system operates year round and serves up to 180 non-residents through 2 service connections.

**PENINSULA GRACE BRETHREN CHURCH DRINKING WATER PROTECTION AREA**

In order to evaluate whether a drinking water source is at risk, we must first evaluate what are the most likely pathways for surface contamination to reach the groundwater. These areas are determined by looking at the characteristics of the soil, groundwater, aquifer, and well.

The most probable area for contamination to reach the drinking water well is the area that contributes water to the well, the groundwater recharge area. This area is designated as the drinking water protection area (DWPA). Because releases of contaminants within the protection area are most likely to impact the drinking water well, this area will serve as the focus for voluntary protection efforts.

An analytical calculation was used to determine the size and shape of the DWPA for Peninsula Grace Brethren Church. The input parameters describing the attributes of the aquifer in this calculation were adopted from Groundwater (*Freeze and Cherry 1979*). Available geology and groundwater contours were also considered to take into account any uncertainties in groundwater flow and aquifer characteristics to arrive at a meaningful protection area.

The protection areas established for wells by the ADEC are usually separated into four zones, limited by the watershed. These zones correspond to differences in the time-of-travel (TOT) of the water moving through the aquifer to the well (Please refer to the Guidance Manual for Class A Public Water Systems for additional information).

The time of travel for contaminants within the water varies and is dependent on the physical and chemical characteristics of each contaminant. The following is a summary of the four protection area zones for wells and the calculated time-of-travel for each:

**Table 1. Definition of Zones**

<b>Zone</b>	<b>Definition</b>
A	¼ the distance for the 2-yr. time-of-travel
B	Less than 2 years time-of-travel
C	Less than 5 years time-of-travel
D	Less than 10 years time-of-travel

The DWPA for the Peninsula Grace Brethren Church was determined using an analytical calculation and includes Zone A, B, C, and D (See Map 1 of Appendix A).

**INVENTORY OF POTENTIAL AND EXISTING CONTAMINANT SOURCES**

The Drinking Water Protection Program has completed an inventory of potential and existing sources of contamination within the Peninsula Grace Brethren Church DWPA. This inventory was completed through a search of agency records and other publicly available information. Potential sources of contamination to the drinking water aquifer include a wide range of categories and types. Potential drinking water contaminants are found within agricultural, residential, commercial, and industrial areas, but can also occur within areas that have little or no development.

For the basis of all Class A public water system assessments, six categories of drinking water contaminants were inventoried. They include:

- Bacteria and viruses;
- Nitrates and/or nitrites;
- Volatile organic chemicals;
- Heavy metals, cyanide, and other inorganic chemicals;
- Synthetic organic chemicals; and
- Other organic chemicals.

The sources are displayed on Map 1 of Appendix C and summarized in Table 1 of Appendix B.

### RANKING OF CONTAMINANT RISKS

Once the potential and existing sources of contamination have been identified, they are assigned a ranking according to what type and level of risk they represent. Ranking of contaminant risks for a “potential” or “existing” source of contamination is a function of toxicity and volumes of specific contaminants associated with that source. Rankings include:

- Low;
- Medium;
- High; and
- Very High.

The time-of-travel for contaminants within the water varies and is dependent on the physical and chemical characteristics of each contaminant. Bacteria and Viruses are only inventoried in Zones A and B because of their short life span. Only “Very High” and “High” rankings are inventoried within the outer Zone D due to the probability of contaminant dilution by the time the contaminants get to the well.

Tables 2 through 4 in Appendix B contain the ranking of potential and existing sources of contamination with respect to bacteria and viruses, nitrates and/or nitrites, and volatile organic chemicals.

### VULNERABILITY OF PENINSULA GRACE BRETHREN CHURCH DRINKING WATER SYSTEM

Vulnerability of a drinking water source to contamination is a combination of two factors:

- Natural susceptibility; and
- Contaminant risks.

Appendix D contains eight charts, which together form the ‘Vulnerability Analysis’ for a source water assessment for a public drinking water source. Chart 1 analyzes the ‘Susceptibility of the Wellhead’ to contamination by looking at the construction of the well and its surrounding area. Chart 2 analyzes the ‘Susceptibility of the Aquifer’ to contamination by looking at the naturally occurring attributes of the water source and influences on the groundwater system that

might lead to contamination. Chart 3 analyzes ‘Contaminant Risks’ for the drinking water source with respect to bacteria and viruses. The ‘Contaminant Risks’ portion of the analysis considers potential sources of contaminants as well as a review of contamination that has or may have occurred, but has not arrived or been detected at the well. Lastly, Chart 4 contains the ‘Vulnerability Analysis for Bacteria and Viruses’. Charts 5 through 8 contain the Contaminant Risks and Vulnerability Analyses for nitrates and nitrites and volatile organic chemicals, respectively.

A score for the Natural Susceptibility is reached by considering the properties of the well and the aquifer.

Susceptibility of the Wellhead (0 – 25 Points)  
(Chart 1 of Appendix D)

+

Susceptibility of the Aquifer (0 – 25 Points)  
(Chart 2 of Appendix D)

=

Natural Susceptibility (Susceptibility of the Well)  
(0 – 50 Points)

A ranking is assigned for the Natural Susceptibility according to the point score:

Natural Susceptibility Ratings	
40 to 50 pts	Very High
30 to < 40 pts	High
20 to < 30 pts	Medium
< 20 pts	Low

Peninsula Grace Brethren Church’s well is completed in an unconfined aquifer setting. Because an unconfined aquifer is recharged by surface water and precipitation that migrates downward from the surface, contaminants at the surface have the potential to adversely impact this aquifer.

Table 2 shows the Susceptibility scores and ratings for the Peninsula Grace Brethren Church.

**Table 2. Susceptibility**

	Score	Rating
Susceptibility of the Wellhead	5	Low
Susceptibility of the Aquifer	25	Very High
Natural Susceptibility	30	High

Contaminant Risk Ratings	
40 to 50 pts	Very High
30 to < 40 pts	High
20 to < 30 pts	Medium
< 20 pts	Low

Contaminant risks to a drinking water source depend on the type, number or density, and distribution of contaminant sources. This score has been derived from an examination of existing and historical contamination that has been detected at the drinking water source through routine sampling. It also evaluates potential sources of contamination. Flow charts are used to assign a point score, and ratings are assigned in the same way as for the natural susceptibility:

Table 3 summarizes the Contaminant Risks for each category of drinking water contaminants..

**Table 3. Contaminant Risks**

Category	Score	Rating
Bacteria and Viruses	40	Very High
Nitrates and/or Nitrites	50	Very High
Volatile Organic Chemicals	40	Very High
Heavy Metals, Cyanide, and Other Inorganic Chemicals	40	Very High
Synthetic Organic Chemicals	40	Very High
Other Organic Chemicals	35	High

Finally, an overall vulnerability score is assigned for each water system by combining each of the contaminant risk scores with the natural susceptibility score:

$$\begin{aligned}
 &\text{Natural Susceptibility (0 – 50 points)} \\
 &+ \\
 &\text{Contaminant Risks (0 – 50 points)} \\
 &= \\
 &\text{Vulnerability of the} \\
 &\text{Drinking Water Source to Contamination (0 – 100).}
 \end{aligned}$$

Again, rankings are assigned according to a point score:

Overall Vulnerability Ratings	
80 to 100 pts	Very High
60 to < 80 pts	High
40 to < 60 pts	Medium
< 40 pts	Low

Table 4 contains the overall vulnerability scores (0 – 100) and ratings for each of the three categories of drinking water contaminants. Note: scores are rounded off to the nearest five.

**Table 4. Overall Vulnerability**

Category	Score	Rating
Bacteria and Viruses	70	High
Nitrates and Nitrites	80	Very High
Volatile Organic Chemicals	70	High
Heavy Metals, Cyanide, and Other Inorganic Chemicals	70	High
Synthetic Organic Chemicals	70	High
Other Organic Chemicals	65	High

### Bacteria and Viruses

Roads, large capacity septic systems, motor vehicle wates disposal wells, residential area and residential septic systems represent the greatest risk for bacteria and viruses to this drinking water well.

Only a small amount of bacteria and viruses are required to endanger public health. Coli forms are found naturally in the environment and although they aren't necessarily a health threat, it is an indicator of other potentially harmful bacteria in the water, more specifically, fecal coli forms and E. coli which only come from human and animal fecal waste (EPA, 2002). Harmful bacteria can cause diarrhea, cramps, nausea, headaches, or other symptoms (EPA, 2002). Sampling has not detected bacteria or viruses within source waters.

After combining the contaminant risk for bacteria and viruses with the natural susceptibility of the well, the overall vulnerability of the well to contamination is high.

### Nitrates and Nitrites

Roads, large capacity septic systems, motor vehicle wates disposal wells, residential area and residential septic systems represent the greatest risk to nitrates and nitrites for this source of public drinking water.

Nitrates are very mobile, moving at approximately the same rate as water. The sampling history for the Peninsula Grace Brethren Church well indicates that nitrate concentrations have ranged from 1 mg/l to 1.6 mg/l. The reported nitrate concentrations suggest that the nitrate concentrations are attributed to natural

sources. Nitrate concentrations in uncontaminated groundwater are typically less than 2 mg/l therefore, nitrate concentrations above 2 mg/L may be indicative of man-made sources. The most recent nitrate level detected was 16% (1.6 mg/L) of the Maximum Contaminant Level (MCL) of 10 mg/L. The MCL is the maximum level of contaminant that is allowed to exist in drinking water and still be consumed by humans without harmful health effects. Though existing nitrate contamination was detected at the site, recent data indicates that nitrate concentrations are safe with respect to human health.

After combining the contaminant risk for nitrates and nitrites with the natural susceptibility of the well, the overall vulnerability of the well to nitrate and nitrite contamination is very high.

### **Volatile Organic Chemicals**

Roads, large capacity septic systems, residential septic systems, residential areas, body shops, motor vehicle repair shops, motor vehicle waste disposal wells and motor vehicle storage represent the greatest identified risk for volatile organic chemical contamination to the well.

Approximately 20% residents in the area typically heat their homes with various types of on-site fuel sources, including propane and heating oil stored in aboveground or underground storage tanks. Although this report does not address heating oil tanks (unless their location is known), they can pose a risk of volatile organic chemical contamination to drinking water sources. The most common causes of fuel leaks of these heating oil systems are overfilling the tank, ruptured fuel lines, leaking storage tanks, damaged or faulty valves and vandalism. Secondary containment around the tank and regular system maintenance can help prevent many of these harmful fuel leaks and help protect the drinking water supply.

Volatile Organic Chemicals have not been detected within source waters. After combining the contaminant risk for volatile organic chemicals with the natural susceptibility of the well, the overall vulnerability of the well to contamination is high.

### **Heavy Metals, Cyanide, and Other Inorganic Chemicals**

Roads, large capacity septic systems, residential area, residential septic systems and a gasoline station represent the greatest risk for inorganic chemicals to the well.

Samplings of inorganic chemicals have detected arsenic and thallium has been detected at levels below the

maximum contaminant levels (MCLs). The MCL is the maximum level of contaminant that is allowed to exist in drinking water and still be consumed by humans without harmful health effects. Prolonged exposure to levels exceeding the MCL can cause skin damage, problems with circulatory systems, and may create an increased risk of developing cancer (EPA, 2002). Though arsenic and thallium have been detected, recent data indicates that the concentrations are safe with respect to human health

After combining the contaminant risk for heavy metals, cyanide and other inorganic chemicals with the natural susceptibility of the well, the overall vulnerability of the well to contamination is medium.

### **Synthetic Organic Chemicals**

Large capacity septic systems, residential area, residential septic systems, orchards/nurseries and motor vehicle waste disposal wells represent the greatest risk for inorganic chemicals to the well.

Sampling for synthetic organic chemicals has not occurred. The system currently has an SOC waiver and is not required to sample.

After combining the contaminant risk for synthetic organic chemicals with the natural susceptibility of the well, the overall vulnerability of the well to contamination is high .

### **Other Organic Chemicals**

Roads, large capacity septic systems, residential area, residential septic systems, orchard/nursery, automotive body shop, automotive storage and repair shop represent the greatest risk for other organic chemicals to the well.

Sampling for other organic chemicals has not occurred. The system currently has an OOC waiver and is not required to sample.

After combining the contaminant risk for synthetic organic chemicals with the natural susceptibility of the well, the overall vulnerability of the well to contamination is high.



## REFERENCES

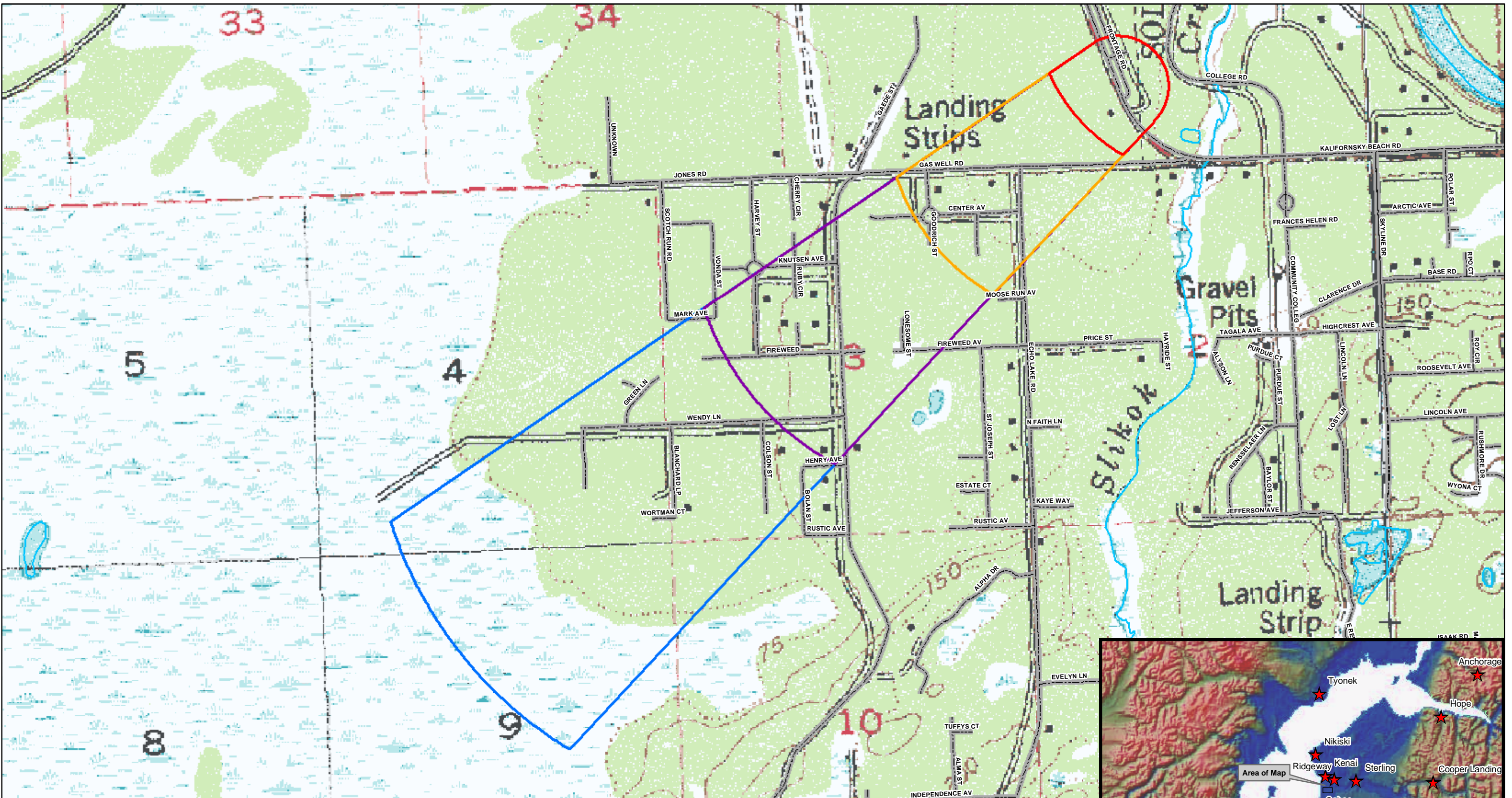
- Alaska Department of Community and Economic Development (ADCED), 2002 [WWW document]. URL [http://www.dced.state.ak.us/mra/CF\\_BLOCK.cfm](http://www.dced.state.ak.us/mra/CF_BLOCK.cfm).
- Alaska Department of Environmental Conservation, Contaminated Sites Database, 2003 [WWW database], URL [http://www.state.ak.us/dec/dspar/csites/cs\\_search.htm](http://www.state.ak.us/dec/dspar/csites/cs_search.htm)
- Alaska Department of Environmental Conservation, Leaking Underground Storage Tank Database, 2003 [WWW database], URL [http://www.dec.state.ak.us/spar/stp/ust/search/fac\\_search.asp](http://www.dec.state.ak.us/spar/stp/ust/search/fac_search.asp)
- Bailey, B.J., and Hogan, E.V., 1995 Overview of environmental and hydrogeologic conditions near Kenai, Alaska. U.S. Geological Survey Open-File Report 95-410, 18 p.
- Dames and Moore, 1993 Water Supply Well PW-4 Design and Installation Kenai Peninsula Borough, Kenai Alaska. Prepared for Peninsula Grace Brethren Church Corporation.
- Freethy, G.W., and Scully, D.R. 1980 Water Resources of the Cook Inlet Basin, Alaska. U.S. Geological Survey Hydrologic Investigation Atlas HA-620, prepared in cooperation with Alaska Water Study Committee, State of Alaska Department of Natural Resources, and Division of Geological and Geophysical Surveys.
- Freeze, R. A., and Cherry, J.A. 1979, Groundwater, Prentice-Hall, Englewood Cliffs, New Jersey
- Glass, Roy, L. 1996 Groundwater Conditions and Quality in the Western Part of the Kenai Peninsula, Southcentral Alaska. U.S. Geological Survey Open File Report 94-466, prepared in cooperation with the Alaska Department of Natural Resources, Kenai Peninsula Borough, and Kenai Soil and Water Conservation District.
- Hartman, D.C., Pessel, G.H., and McGee, D.I., 1972 Kenai Group of Cook Inlet Basin, Alaska: State of Alaska. Open File Report #49, Department of Natural Resources Division of Geological and Geophysical Surveys, 5p.
- Karlstrom, T.N.V. 1964 Quaternary geology of the Kenai Lowland and glacial history of the Cook Inlet region, Alaska. U.S. Geological Survey Professional Paper 443, 64 p.
- Kenai River Watershed, 2002 [WWW document]. URL [http://www.kenai-watershed.org/spawning/kenai\\_river/kenai\\_river.html](http://www.kenai-watershed.org/spawning/kenai_river/kenai_river.html).
- Martin, G.C., Johnson, B.L., and Grant, 1915, Geology and mineral resources of Kenai Peninsula, Alaska: US Geological Survey Bulletin 587, 243 p., maps.
- United States Environmental Protection Agency (EPA), 2002 [WWW document]. URL <http://www.epa.gov/safewater/mcl.html>.

## ACKNOWLEDGMENT

Source Water Assessments in the Kenai area were jointly prepared by ADEC-Drinking Water Protection Program and URS Corporation. The Drinking Water Protection Program would like to thank URS Corporation for their efforts in researching the area.

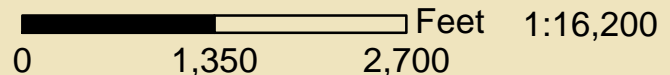
## **APPENDIX A**

### **Peninsula Grace Brethren Church Drinking Water Protection Area Location Map (Map 1)**



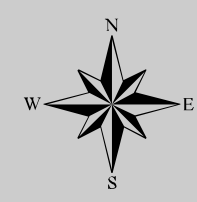
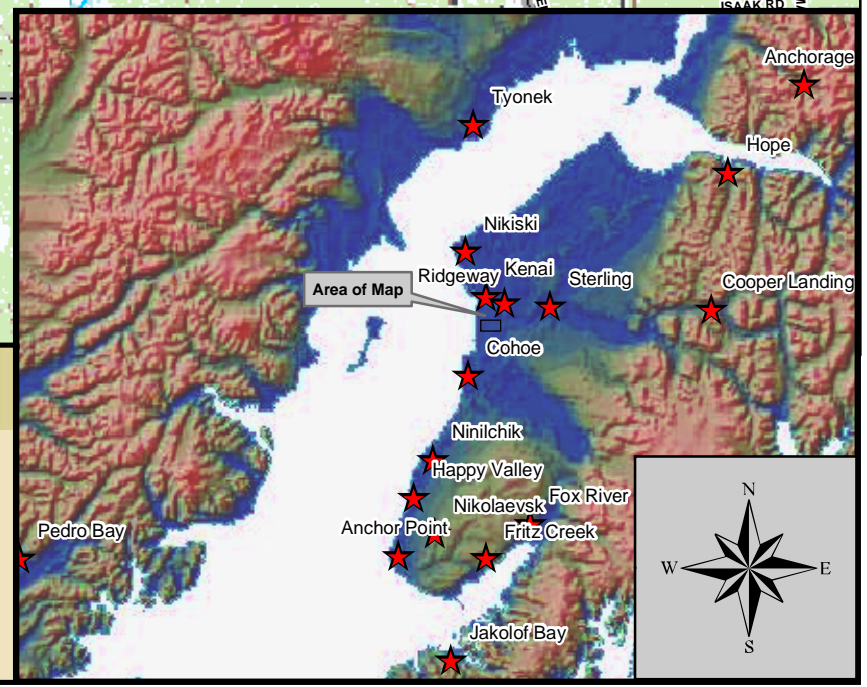
Map 1- Grace Brethren: Drinking Water Protection Area

PWSID: 245406.001



Data Sources:  
 Kenai Borough: Roads and parcels  
 USGS-63,360 topo map and hillshade  
 Potential Sources of Contamination: ADEC

Legend	
	Class A Public Water System
	Zone A Protection Area
	Zone B Protection Area
	Zone C Protection Area
	Zone D Protection Area
	Kenai_land_use
	Roads
	Rivers and Streams



## **APPENDIX B**

### **Contaminant Source Inventory and Risk Ranking for Peninsula Grace Brethren Church (Tables 1-7)**

**Table 1****Contaminant Source Inventory for  
Peninsula Grace Brethren****PWSID 245406.001**

<b>Contaminant Source Type</b>	<b>Contaminant Source ID</b>	<b>CS ID tag</b>	<b>Zone</b>	<b>Map Number</b>	<b>Comments</b>
Orchards or nurseries	A10	A10-01	A	2	
Body shops (automotive)	C05	C05-01	A	2	
Motor /motor vehicle repair shops	C31	C31-01	A	2	
Injection wells (Class V) Large-Capacity Septic System (Drainfield Disposal Method)	D10	D10-1-3	A	2	
Injection wells (Class V) Motor Vehicle Waste Disposal Well	D42	D42-01	A	2	
Injection wells (Class V) Motor Vehicle Waste Disposal Well	D42	D42-02	A	2	
Septic systems (serves one single-family home)	R02	R02-01	A	2	1 residential septic system
Highways and roads, paved (cement or asphalt)	X20	X20-1-2	A	2	2 roads
Motor vehicle/general storage yards/facilities	X27	X27-01	A	2	
Residential Areas	R01	R01-1	B	2	28 residential acres
Septic systems (serves one single-family home)	R02	R02-1-27	B	2	27 residential septic systems
Contaminated sites, DEC recognized, non-Superfund, non-RCRA	U04	U04-01	B	2	
Highways and roads, paved (cement or asphalt)	X20	X20-3-7	B	2	5 roads
Injection wells (Class V) Large-Capacity Septic System (Drainfield Disposal Method)	D10	D10-4	C	2	1 large capacity septic system
Residential Areas	R01	R01-2	C	2	87 residential acres
Septic systems (serves one single-family home)	R02	R02-28-98	C	2	70 residential septic systems
Highways and roads, paved (cement or asphalt)	X20	X20-8-11	C	2	4 roads

Table 2

*Contaminant Source Inventory and Risk Ranking for  
Peninsula Grace Brethren  
Sources of Bacteria and Viruses*

PWSID 245406.001

<i>Contaminant Source Type</i>	<i>Contaminant Source ID</i>	<i>CS ID tag</i>	<i>Zone</i>	<i>Risk Ranking for Analysis</i>	<i>Map Number</i>	<i>Comments</i>
Injection wells (Class V) Large-Capacity Septic System (Drainfield Disposal Method)	D10	D10-1-3	A	High	2	
Injection wells (Class V) Motor Vehicle Waste Disposal Well	D42	D42-01	A	Low	2	
Injection wells (Class V) Motor Vehicle Waste Disposal Well	D42	D42-02	A	Low	2	
Septic systems (serves one single-family home)	R02	R02-01	A	Low	2	1 residential septic system
Highways and roads, paved (cement or asphalt)	X20	X20-1-2	A	Low	2	2 roads
Residential Areas	R01	R01-1	B	Low	2	28 residential acres
Septic systems (serves one single-family home)	R02	R02-1-27	B	Low	2	27 residential septic systems
Highways and roads, paved (cement or asphalt)	X20	X20-3-7	B	Low	2	5 roads

**Table 3**

*Contaminant Source Inventory and Risk Ranking for  
Peninsula Grace Brethren  
Sources of Nitrates/Nitrites*

**PWSID 245406.001**

<i>Contaminant Source Type</i>	<i>Contaminant Source ID</i>	<i>CS ID tag</i>	<i>Zone</i>	<i>Risk Ranking for Analysis</i>	<i>Map Number</i>	<i>Comments</i>
Orchards or nurseries	A10	A10-01	A	Medium	2	
Injection wells (Class V) Large-Capacity Septic System (Drainfield Disposal Method)	D10	D10-1-3	A	High	2	
Septic systems (serves one single-family home)	R02	R02-01	A	Low	2	1 residential septic system
Highways and roads, paved (cement or asphalt)	X20	X20-1-2	A	Low	2	2 roads
Residential Areas	R01	R01-1	B	Low	2	28 residential acres
Septic systems (serves one single-family home)	R02	R02-1-27	B	Low	2	27 residential septic systems
Highways and roads, paved (cement or asphalt)	X20	X20-3-7	B	Low	2	5 roads
Injection wells (Class V) Large-Capacity Septic System (Drainfield Disposal Method)	D10	D10-4	C	High	2	1 large capacity septic system
Residential Areas	R01	R01-2	C	Low	2	87 residential acres
Septic systems (serves one single-family home)	R02	R02-28-98	C	Low	2	70 residential septic systems
Highways and roads, paved (cement or asphalt)	X20	X20-8-11	C	Low	2	4 roads



Table 4

*Contaminant Source Inventory and Risk Ranking for  
Peninsula Grace Brethren  
Sources of Volatile Organic Chemicals*

PWSID 245406.001

<i>Contaminant Source Type</i>	<i>Contaminant Source ID</i>	<i>CS ID tag</i>	<i>Zone</i>	<i>Risk Ranking for Analysis</i>	<i>Map Number</i>	<i>Comments</i>
Body shops (automotive)	C05	C05-01	A	Medium	2	
Motor /motor vehicle repair shops	C31	C31-01	A	Medium	2	
Injection wells (Class V) Large-Capacity Septic System (Drainfield Disposal Method)	D10	D10-1-3	A	Low	2	
Injection wells (Class V) Motor Vehicle Waste Disposal Well	D42	D42-01	A	High	2	
Injection wells (Class V) Motor Vehicle Waste Disposal Well	D42	D42-02	A	High	2	
Septic systems (serves one single-family home)	R02	R02-01	A	Low	2	1 residential septic system
Highways and roads, paved (cement or asphalt)	X20	X20-1-2	A	Low	2	2 roads
Motor vehicle/general storage yards/facilities	X27	X27-01	A	Low	2	
Residential Areas	R01	R01-1	B	Low	2	28 residential acres
Septic systems (serves one single-family home)	R02	R02-1-27	B	Low	2	27 residential septic systems
Highways and roads, paved (cement or asphalt)	X20	X20-3-7	B	Low	2	5 roads
Injection wells (Class V) Large-Capacity Septic System (Drainfield Disposal Method)	D10	D10-4	C	Low	2	1 large capacity septic system
Residential Areas	R01	R01-2	C	Low	2	87 residential acres
Septic systems (serves one single-family home)	R02	R02-28-98	C	Low	2	70 residential septic systems
Highways and roads, paved (cement or asphalt)	X20	X20-8-11	C	Low	2	4 roads

**Table 5**

*Contaminant Source Inventory and Risk Ranking for  
Peninsula Grace Brethren  
Sources of Heavy Metals, Cyanide and Other Inorganic Chemicals*

**PWSID 245406.001**

<i>Contaminant Source Type</i>	<i>Contaminant Source ID</i>	<i>CS ID tag</i>	<i>Zone</i>	<i>Risk Ranking for Analysis</i>	<i>Map Number</i>	<i>Comments</i>
Orchards or nurseries	A10	A10-01	A	Low	2	
Body shops (automotive)	C05	C05-01	A	Medium	2	
Motor /motor vehicle repair shops	C31	C31-01	A	Medium	2	
Injection wells (Class V) Large-Capacity Septic System (Drainfield Disposal Method)	D10	D10-1-3	A	Low	2	
Injection wells (Class V) Motor Vehicle Waste Disposal Well	D42	D42-01	A	High	2	
Injection wells (Class V) Motor Vehicle Waste Disposal Well	D42	D42-02	A	High	2	
Septic systems (serves one single-family home)	R02	R02-01	A	Low	2	1 residential septic system
Highways and roads, paved (cement or asphalt)	X20	X20-1-2	A	Low	2	2 roads
Residential Areas	R01	R01-1	B	Low	2	28 residential acres
Septic systems (serves one single-family home)	R02	R02-1-27	B	Low	2	27 residential septic systems
Highways and roads, paved (cement or asphalt)	X20	X20-3-7	B	Low	2	5 roads
Injection wells (Class V) Large-Capacity Septic System (Drainfield Disposal Method)	D10	D10-4	C	Low	2	1 large capacity septic system
Residential Areas	R01	R01-2	C	Low	2	87 residential acres
Septic systems (serves one single-family home)	R02	R02-28-98	C	Low	2	70 residential septic systems
Highways and roads, paved (cement or asphalt)	X20	X20-8-11	C	Low	2	4 roads

**Table 6**

*Contaminant Source Inventory and Risk Ranking for  
Peninsula Grace Brethren  
Sources of Synthetic Organic Chemicals*

*PWSID 245406.001*

<i>Contaminant Source Type</i>	<i>Contaminant Source ID</i>	<i>CS ID tag</i>	<i>Zone</i>	<i>Risk Ranking for Analysis</i>	<i>Map Number</i>	<i>Comments</i>
Orchards or nurseries	A10	A10-01	A	High	2	
Injection wells (Class V) Large-Capacity Septic System (Drainfield Disposal Method)	D10	D10-1-3	A	Low	2	
Injection wells (Class V) Motor Vehicle Waste Disposal Well	D42	D42-01	A	Low	2	
Injection wells (Class V) Motor Vehicle Waste Disposal Well	D42	D42-02	A	Low	2	
Septic systems (serves one single-family home)	R02	R02-01	A	Low	2	1 residential septic system
Residential Areas	R01	R01-1	B	Low	2	28 residential acres
Septic systems (serves one single-family home)	R02	R02-1-27	B	Low	2	27 residential septic systems
Injection wells (Class V) Large-Capacity Septic System (Drainfield Disposal Method)	D10	D10-4	C	Low	2	1 large capacity septic system
Residential Areas	R01	R01-2	C	Low	2	87 residential acres
Septic systems (serves one single-family home)	R02	R02-28-98	C	Low	2	70 residential septic systems

Table 7

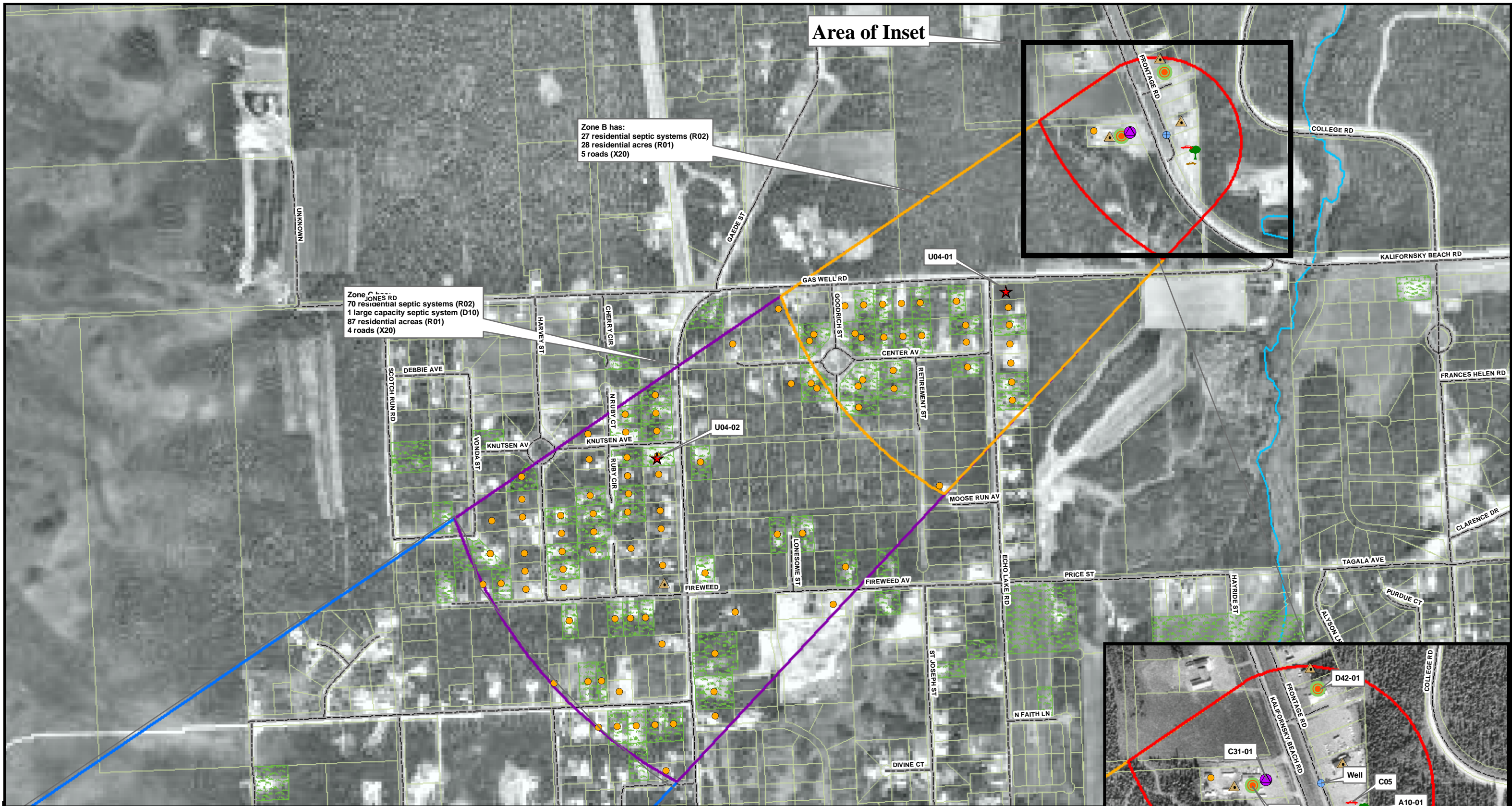
*Contaminant Source Inventory and Risk Ranking for  
Peninsula Grace Brethren  
Sources of Other Organic Chemicals*

PWSID 245406.001

<i>Contaminant Source Type</i>	<i>Contaminant Source ID</i>	<i>CS ID tag</i>	<i>Zone</i>	<i>Risk Ranking for Analysis</i>	<i>Map Number</i>	<i>Comments</i>
Orchards or nurseries	A10	A10-01	A	Low	2	
Body shops (automotive)	C05	C05-01	A	Medium	2	
Motor /motor vehicle repair shops	C31	C31-01	A	Medium	2	
Injection wells (Class V) Large-Capacity Septic System (Drainfield Disposal Method)	D10	D10-1-3	A	Low	2	
Injection wells (Class V) Motor Vehicle Waste Disposal Well	D42	D42-01	A	Medium	2	
Injection wells (Class V) Motor Vehicle Waste Disposal Well	D42	D42-02	A	Medium	2	
Septic systems (serves one single-family home)	R02	R02-01	A	Low	2	1 residential septic system
Highways and roads, paved (cement or asphalt)	X20	X20-1-2	A	Low	2	2 roads
Motor vehicle/general storage yards/facilities	X27	X27-01	A	Low	2	
Residential Areas	R01	R01-1	B	Low	2	28 residential acres
Septic systems (serves one single-family home)	R02	R02-1-27	B	Low	2	27 residential septic systems
Highways and roads, paved (cement or asphalt)	X20	X20-3-7	B	Low	2	5 roads
Injection wells (Class V) Large-Capacity Septic System (Drainfield Disposal Method)	D10	D10-4	C	Low	2	1 large capacity septic system
Residential Areas	R01	R01-2	C	Low	2	87 residential acres
Septic systems (serves one single-family home)	R02	R02-28-98	C	Low	2	70 residential septic systems
Highways and roads, paved (cement or asphalt)	X20	X20-8-11	C	Low	2	4 roads

## **APPENDIX C**

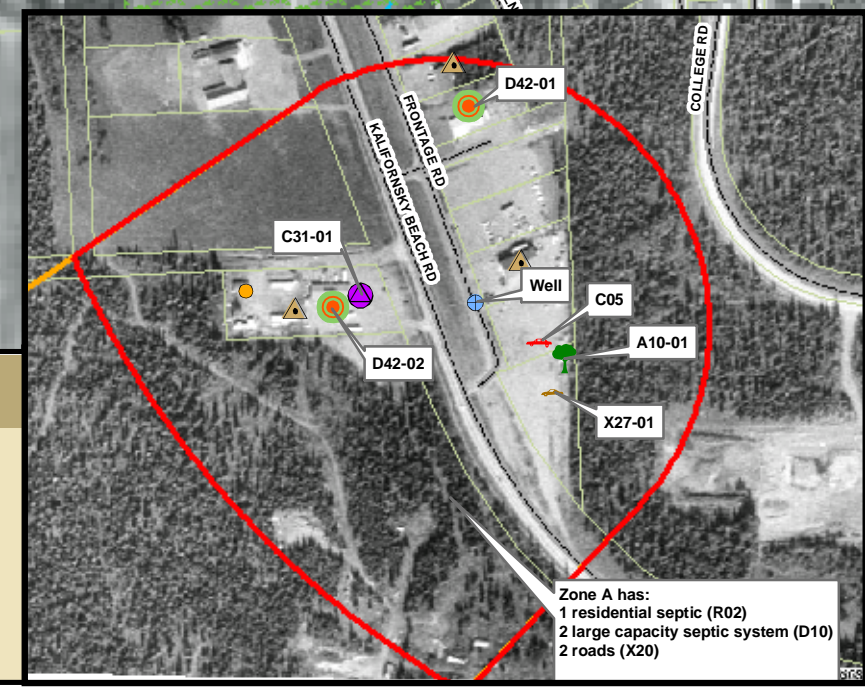
### **Peninsula Grace Brethren Church Drinking Water Protection Area and Potential and Existing Contaminant Sources (Map 2)**



Area of Inset

Zone B has:  
 27 residential septic systems (R02)  
 28 residential acres (R01)  
 5 roads (X20)

Zone C has:  
 70 residential septic systems (R02)  
 1 large capacity septic system (D10)  
 87 residential acres (R01)  
 4 roads (X20)



Map 2- Grace Brethren: Potential and Existing Sources of Contamination

PWSID: 245406.001

Alaska Department of Environmental Conservation

Alaska Drinking Water Protection Program

0 800 1,600 Feet 1:9,600

Data Sources:  
 Roads and parcels: Kenai Borough  
 Aerial Photo: USGS and Microsoft Terraserver  
 Topographic map: 63,360 USGS  
 Potential Sources of Contamination: ADEC

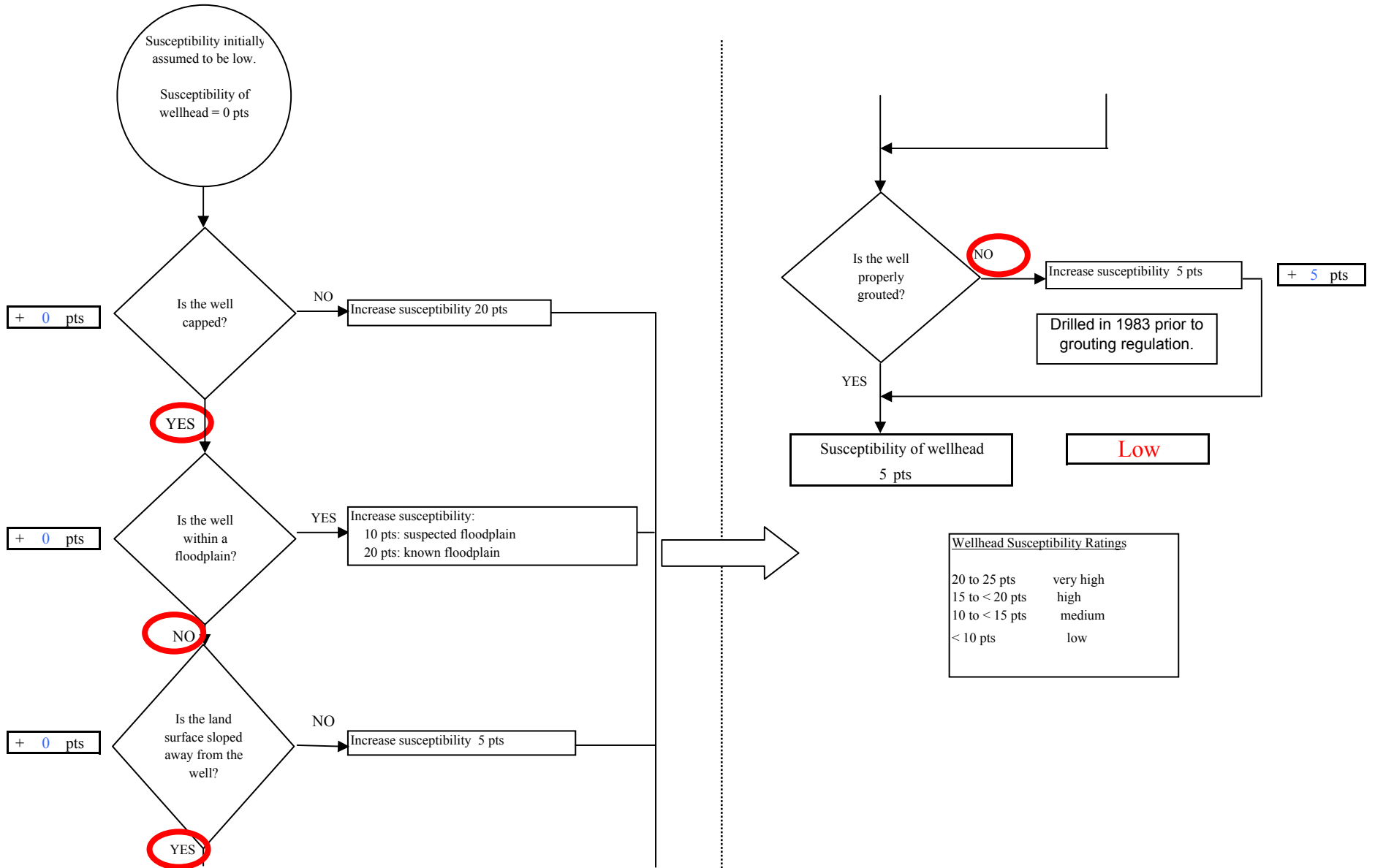
Legend	
	Class A Public Water System
	Zone A Protection Area
	Zone B Protection Area
	Zone C Protection Area
	Zone D Protection Area
	Parcels
	Residential Area (R02)
	Roads
	Rivers and Streams
	Injection wells (Class V) Septic System (Drainfield Disposal Method) (D10)
	Injection wells (Class V) Motor Vehicle Waste Disposal Well (D42)
	Septic systems (serves one single-family home and/or less than 20 people)(R02)
	Orchards or nurseries (A10)
	Body shops (automotive) (C05)
	Motor /motor vehicle repair shops (C31)
	Contaminated sites, DEC recognized, non-Superfund, non-RCRA (U04)
	Motor vehicle/general storage yards/facilities (X27)

Zone A has:  
 1 residential septic (R02)  
 2 large capacity septic system (D10)  
 2 roads (X20)

## **APPENDIX D**

### **Vulnerability Analysis for Peninsula Grace Brethren Church Public Drinking Water Source (Charts 1-14)**

**Chart 1. Susceptibility of the wellhead - Pennisula Grace Brethren Church PWSID 245406.001**



Wellhead Susceptibility Ratings	
20 to 25 pts	very high
15 to < 20 pts	high
10 to < 15 pts	medium
< 10 pts	low



**Chart 2. Susceptibility of the aquifer - Peninsula Grace Brethren Church PWSID 245406.001**

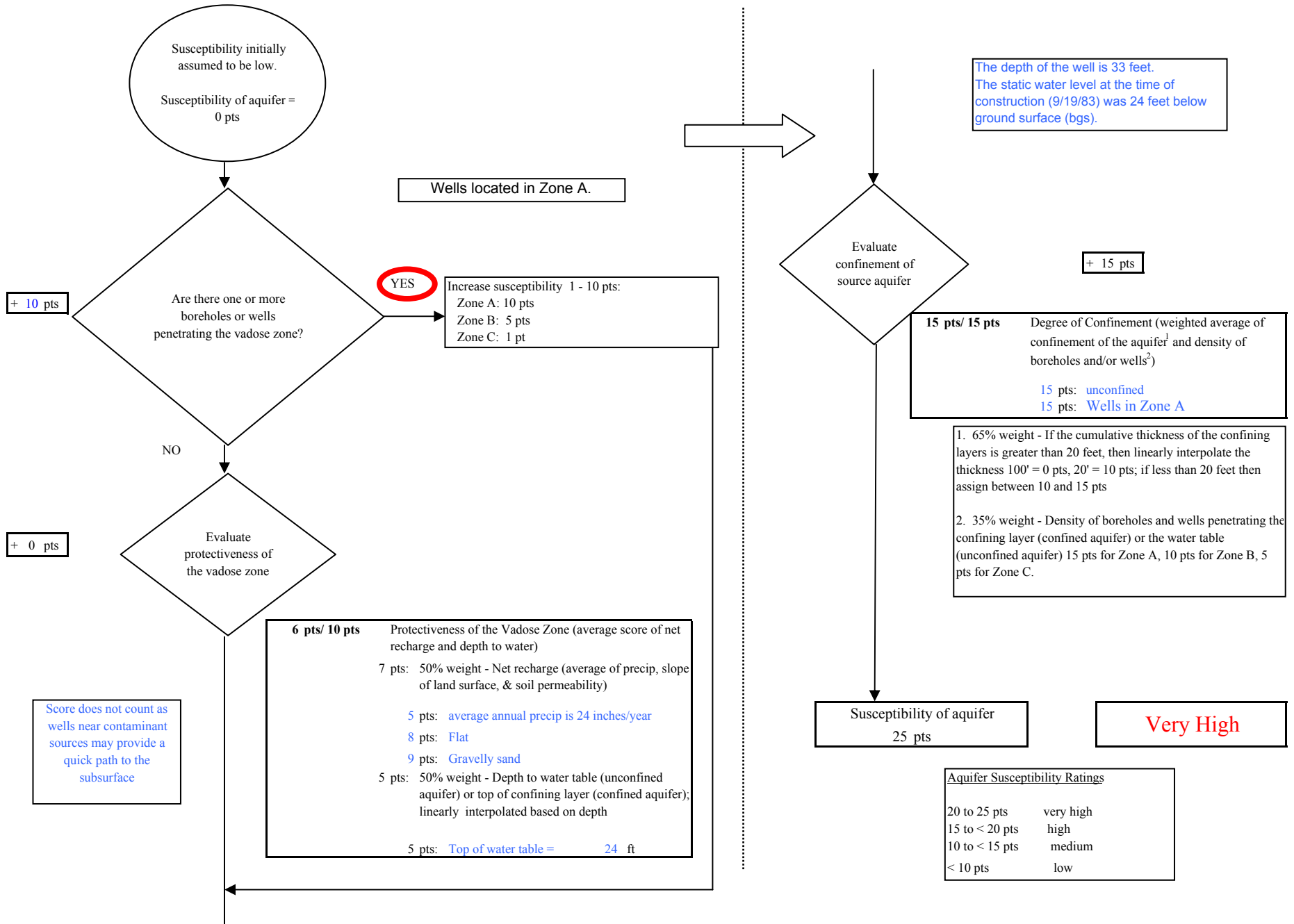
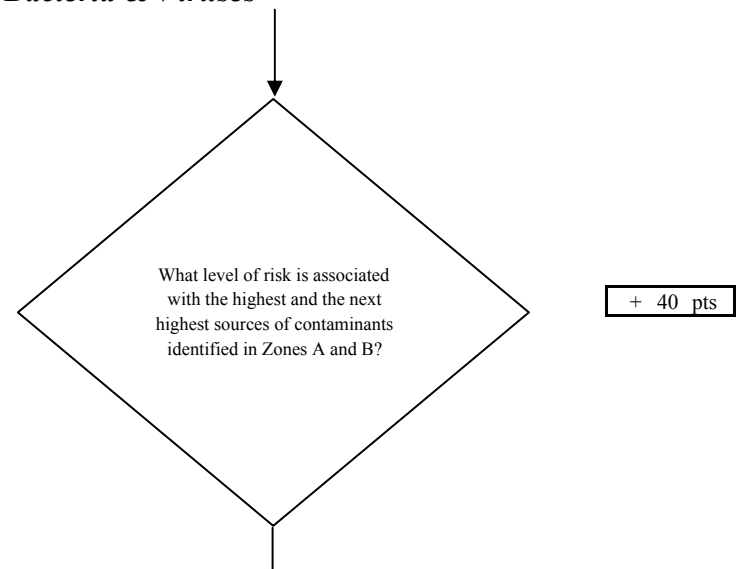
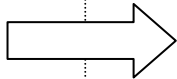
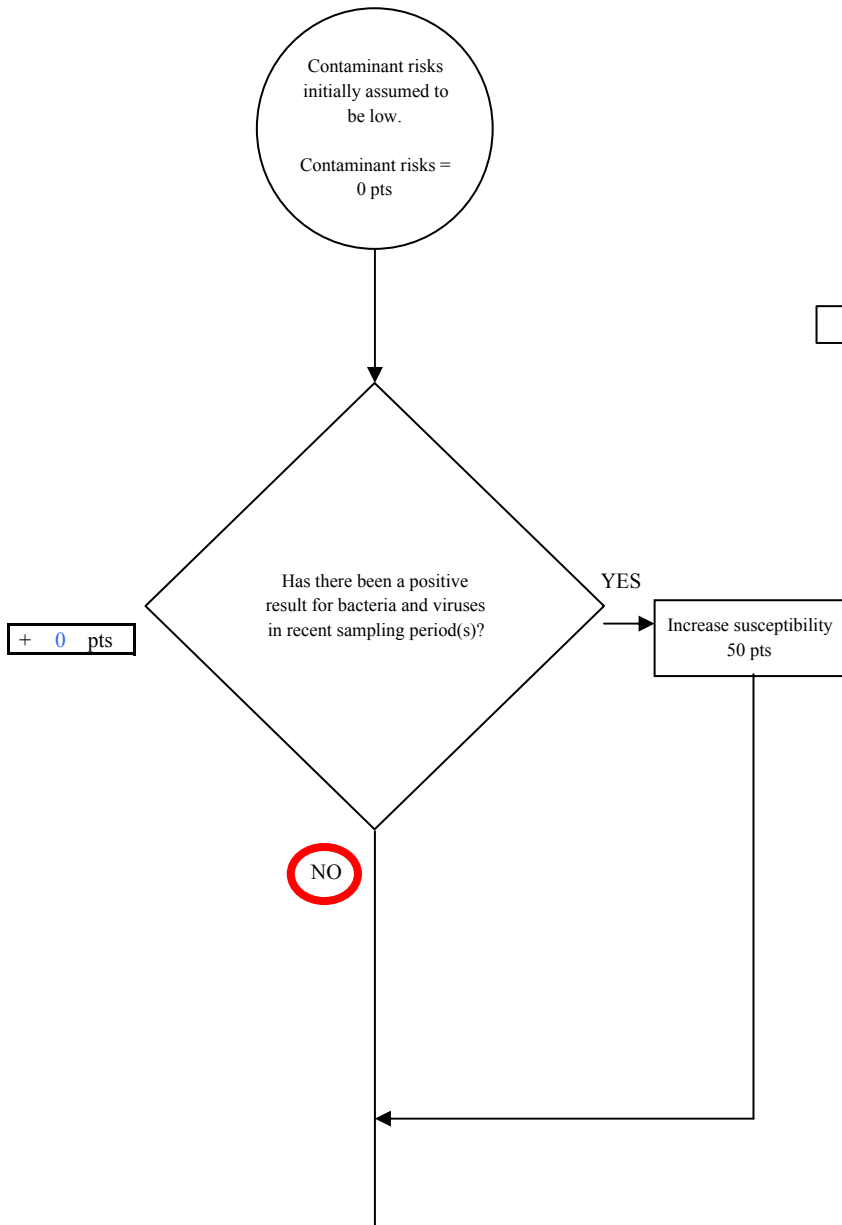


Chart 3. Contaminant risks for Peninsula Grace Brethren Church PWSID 245406.001 - Bacteria & Viruses



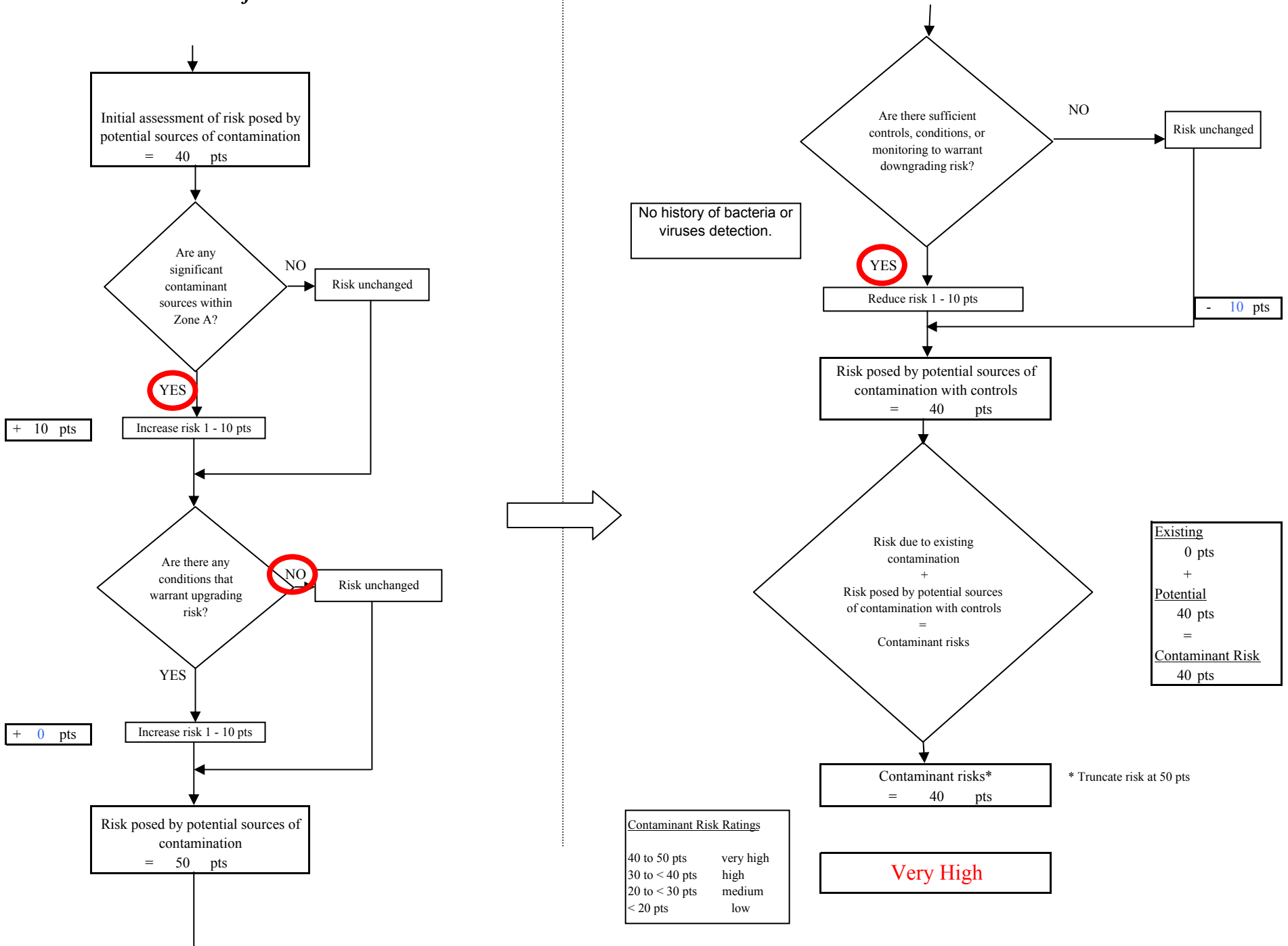
Risk Rankings for Contaminant Sources Identified in Zones A and B			
	Zone A	Zone B	Total
Very High(s)	0	0	0
High(s)	2	0	2
Medium(s)	0	0	0
Low(s)	4	5	9

	LOW 10 pts	MEDIUM 20 pts	HIGH 30 pts	VERY HIGH 40 pts
LOW	≥ 10 sources + 10 pts	≥ 10 sources + 5 pts	≥ 20 sources + 5 pts	----
MEDIUM	----	≥ 2 sources + 5 pts	≥ 5 sources + 5 pts	≥ 10 sources + 5 pts
HIGH	----	----	≥ 1 source + 10 pts	≥ 2 sources + 10 pts
VERY HIGH	----	----	----	≥ 1 source + 10 pts

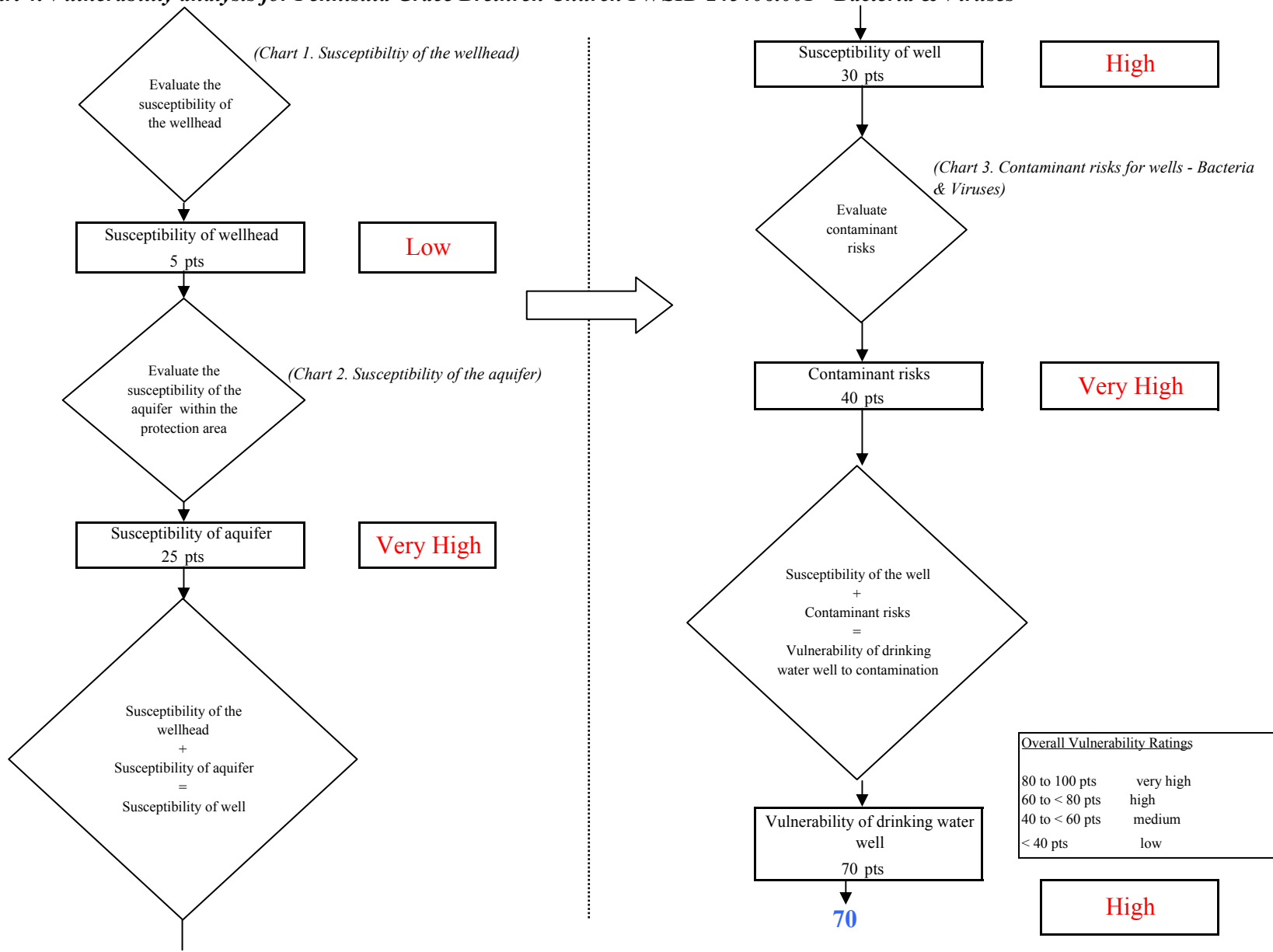
Matrix Score 40

Note: Septic systems, sewerlines, and roads are each assigned a risk ranking for each individual contaminant source in the CSI. The VA, however, counts these contaminant sources as a group and assigns a calculated number of either "lows" or "mediums" based on the density.

**Chart 3. Contaminant risks for Peninsula Grace Brethren Church PWSID 245406.001 - Bacteria & Viruses**



**Chart 4. Vulnerability analysis for Peninsula Grace Brethren Church PWSID 245406.001 - Bacteria & Viruses**



**Chart 5. Contaminant risks for Peninsula Grace Brethren Church PWSID 245406.001 - Nitrates and Nitrites**

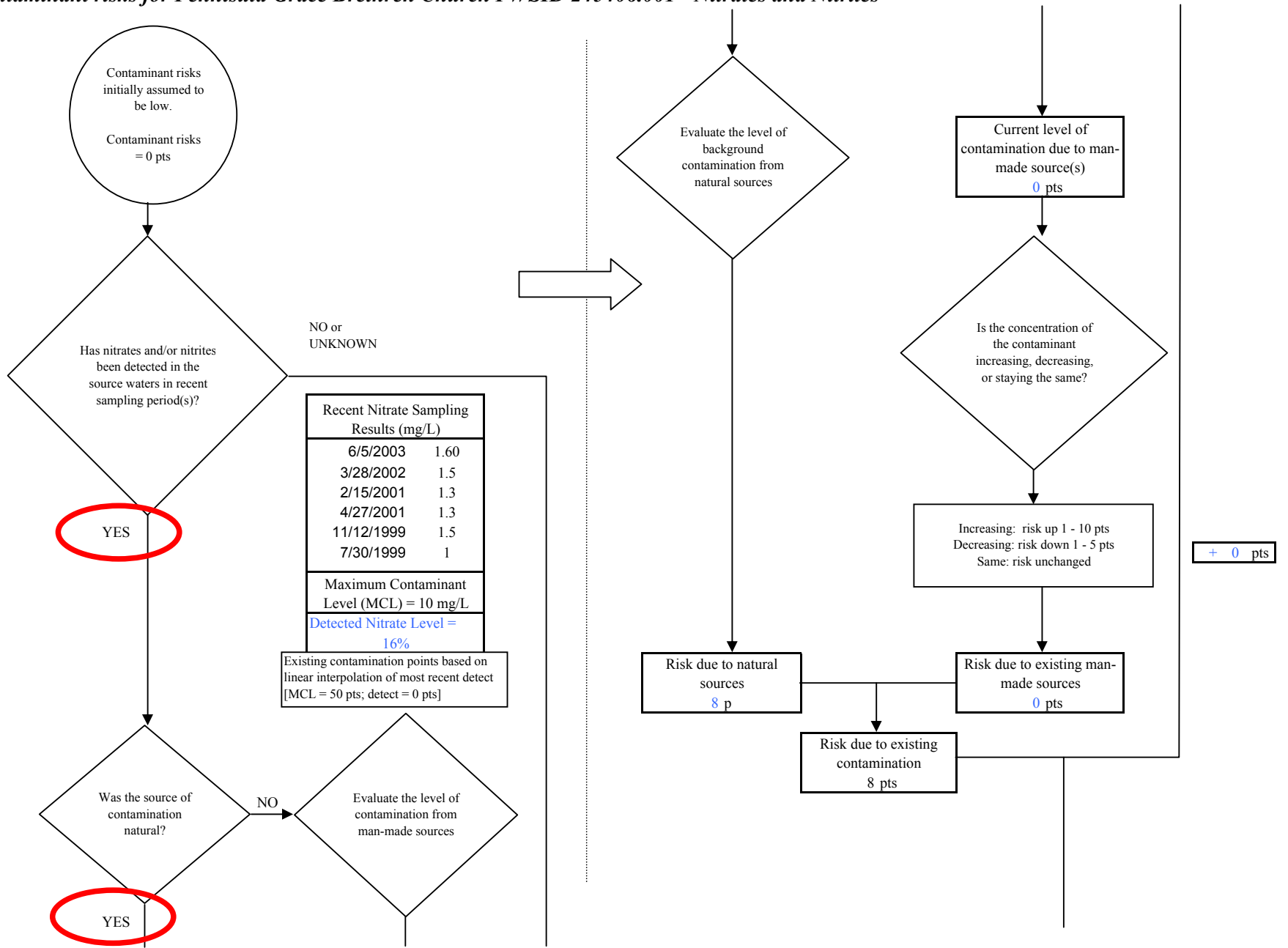
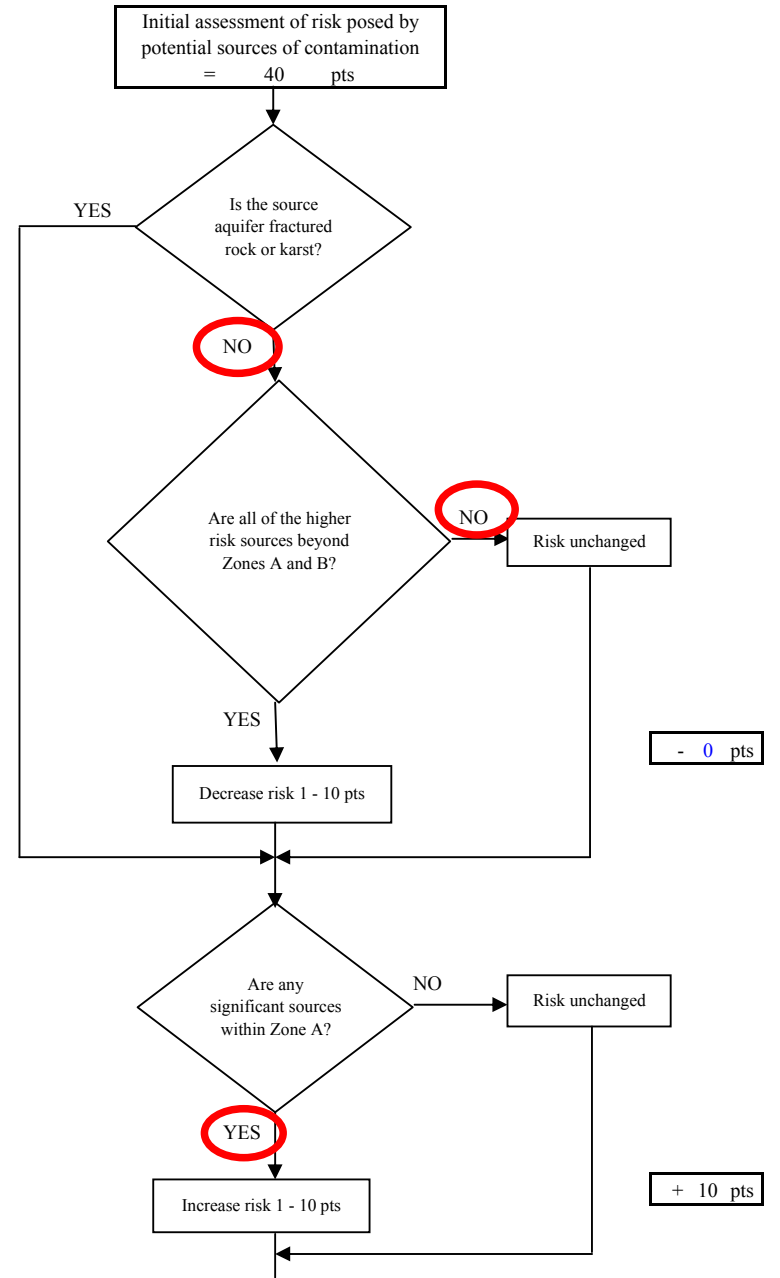
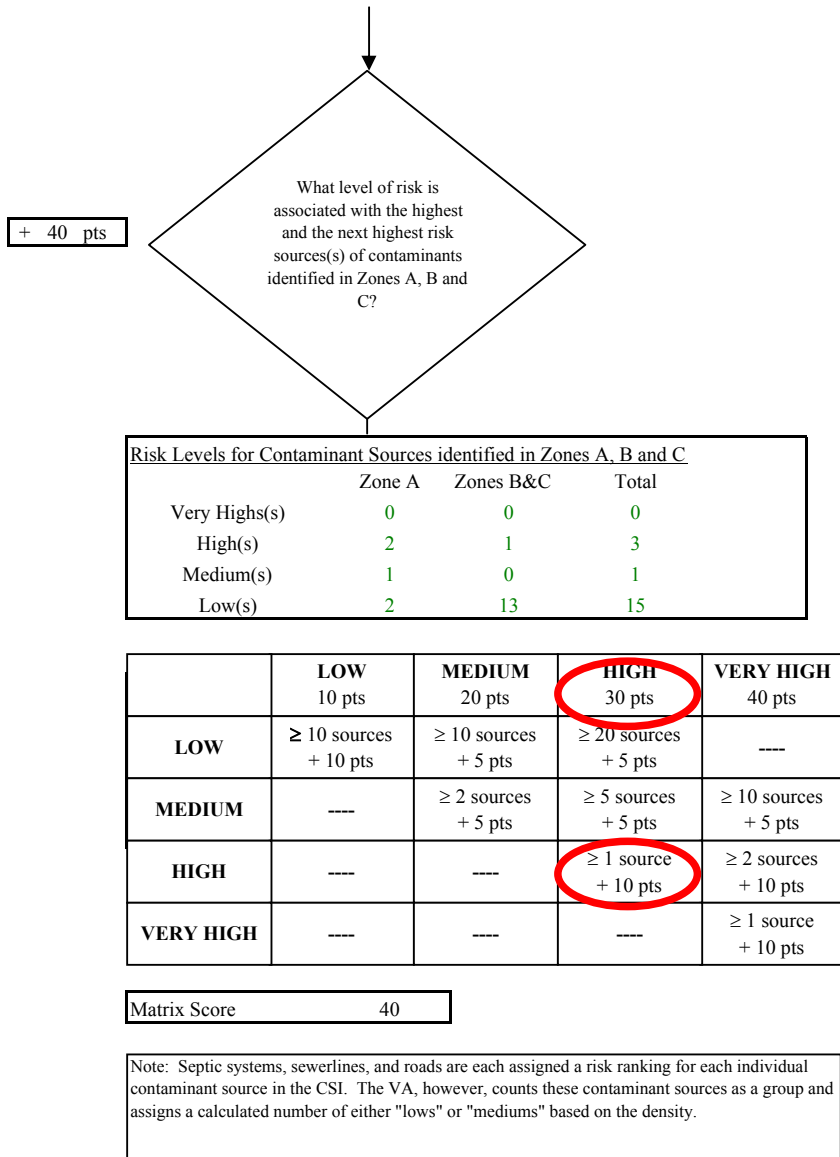
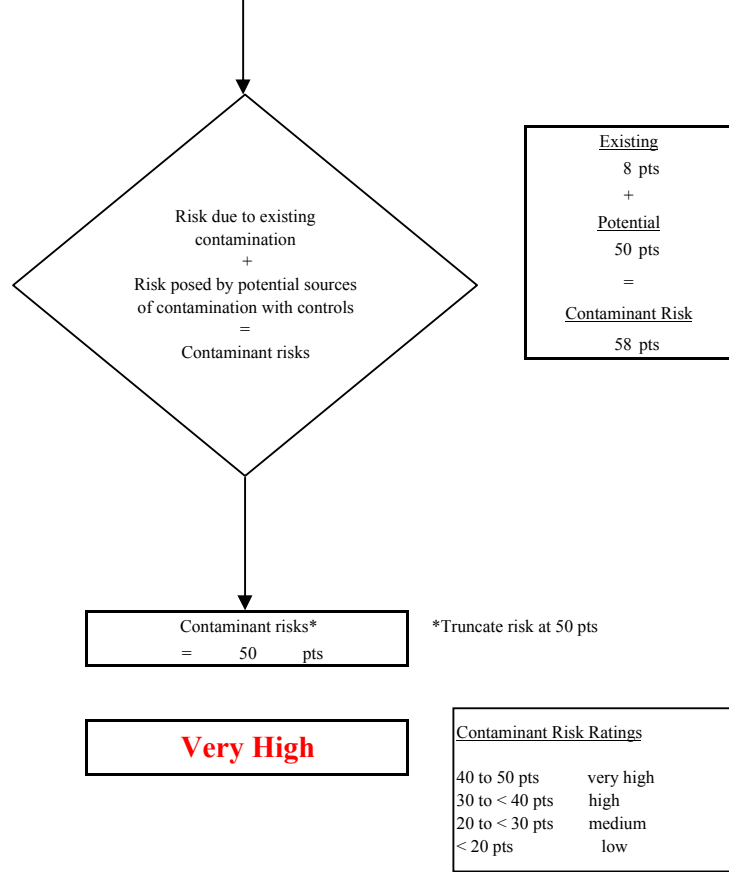
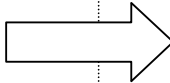
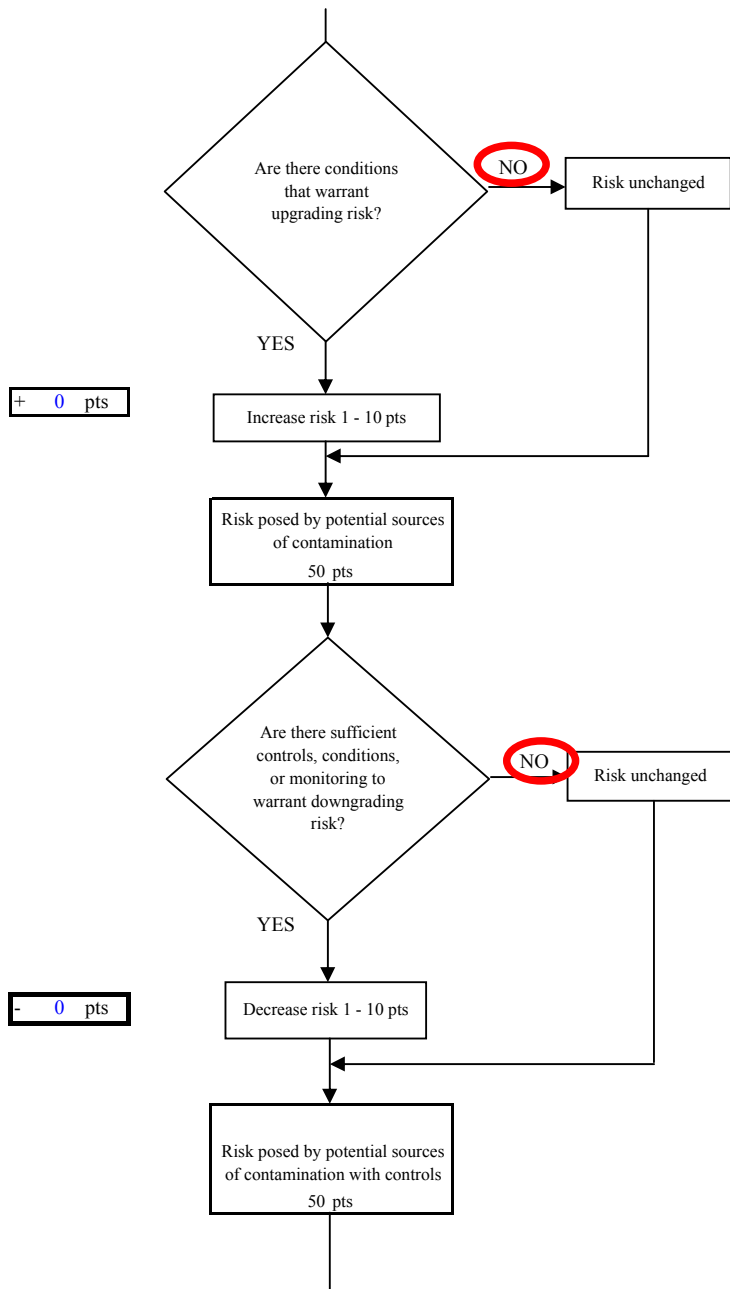


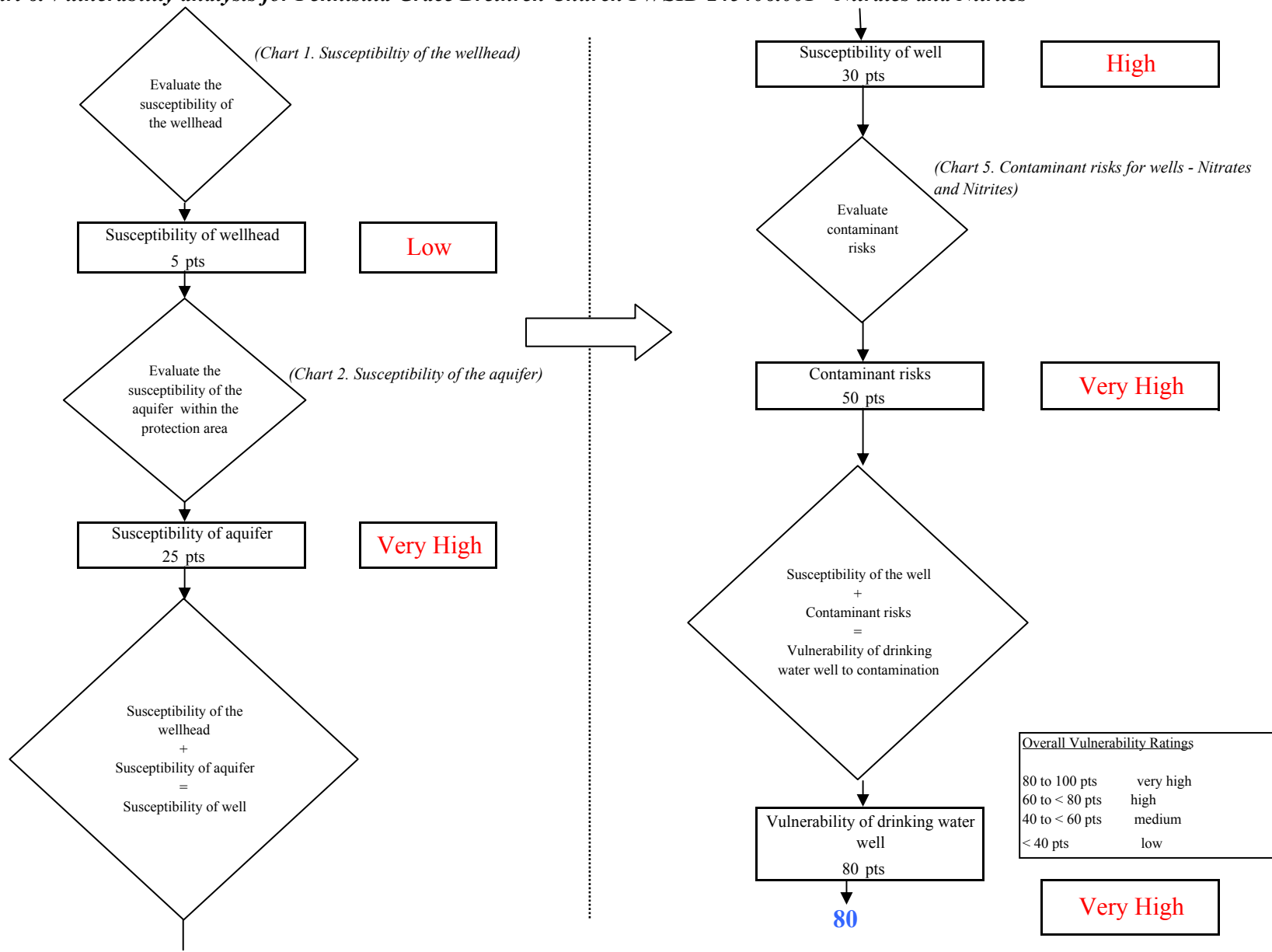
Chart 5. Contaminant risks for Peninsula Grace Brethren Church PWSID 245406.001 - Nitrates and Nitrites



**Chart 5. Contaminant risks for Peninsula Grace Brethren Church PWSID 245406.001 - Nitrates and Nitrites**



**Chart 6. Vulnerability analysis for Peninsula Grace Brethren Church PWSID 245406.001 - Nitrates and Nitrites**





**Chart 7. Contaminant risks for Peninsula Grace Brethren Church PWSID 245406.001 - Volatile Organic Chemicals**

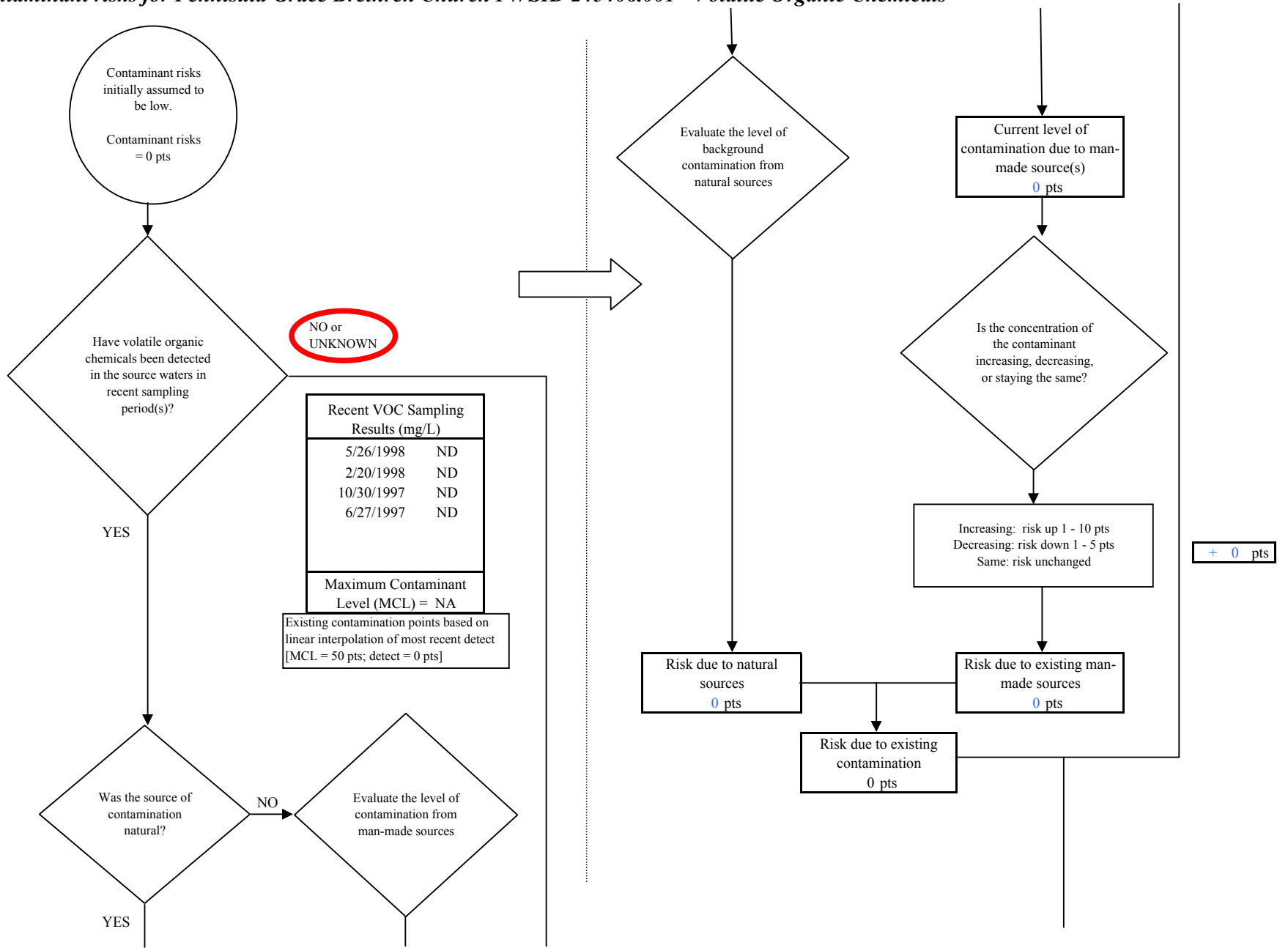
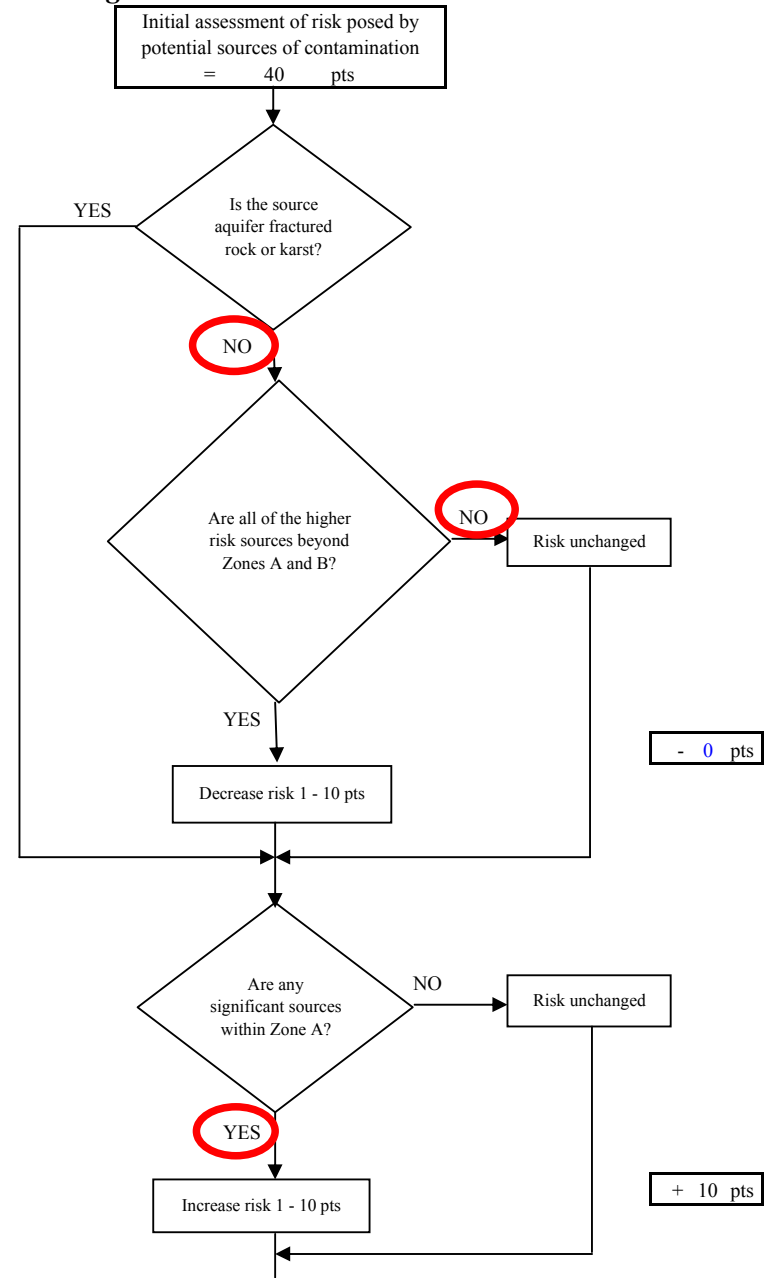
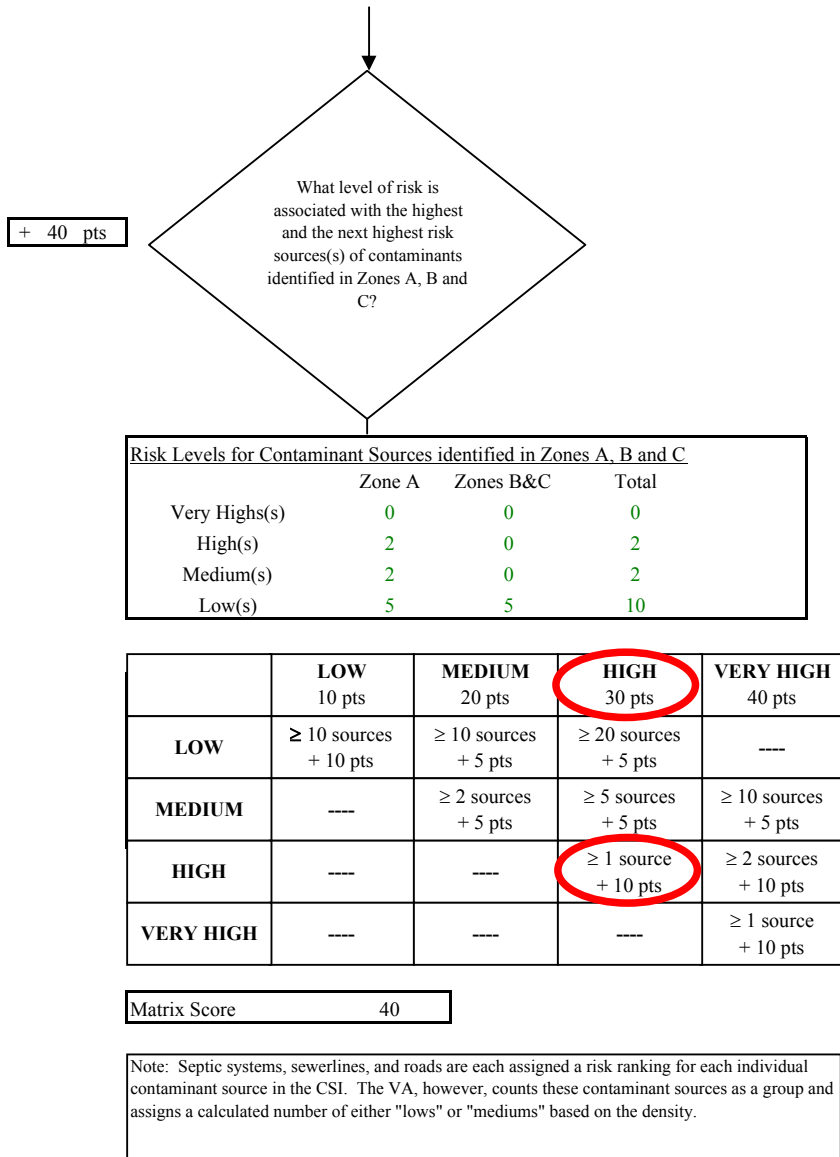
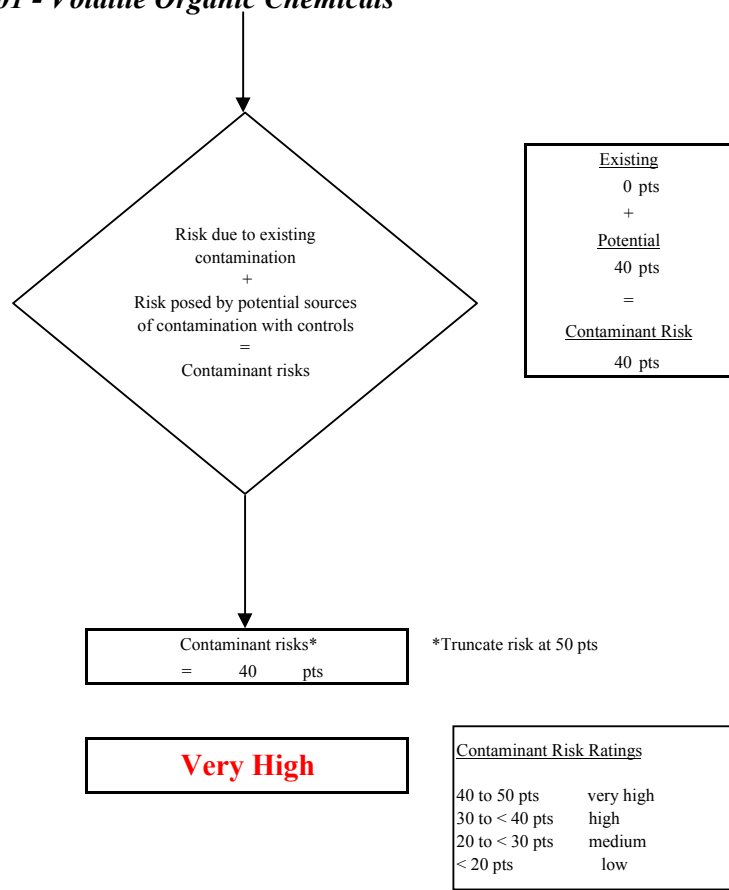
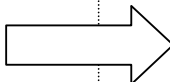
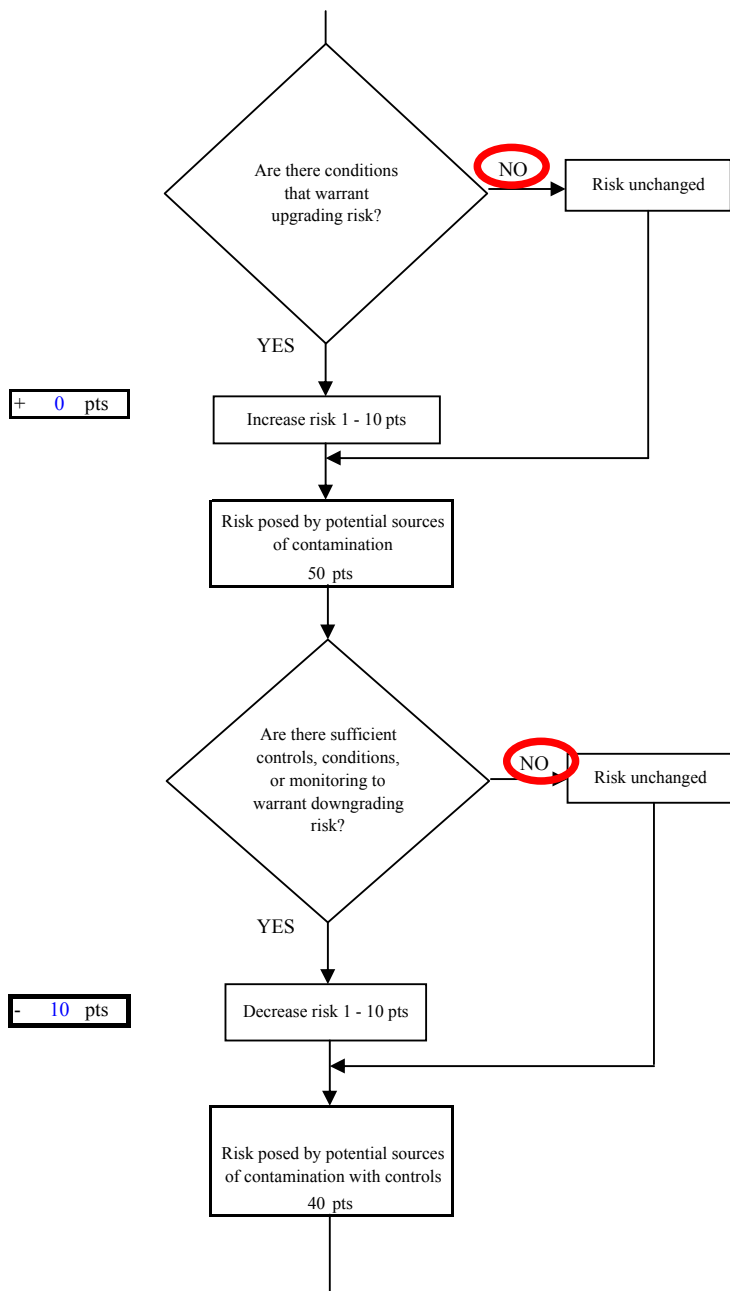


Chart 7. Contaminant risks for Peninsula Grace Brethren Church PWSID 245406.001 - Volatile Organic Chemicals



**Chart 7. Contaminant risks for Peninsula Grace Brethren Church PWSID 245406.001 - Volatile Organic Chemicals**



**Chart 8. Vulnerability analysis for Peninsula Grace Brethren Church PWSID 245406.001 - Volatile Organic Chemicals**

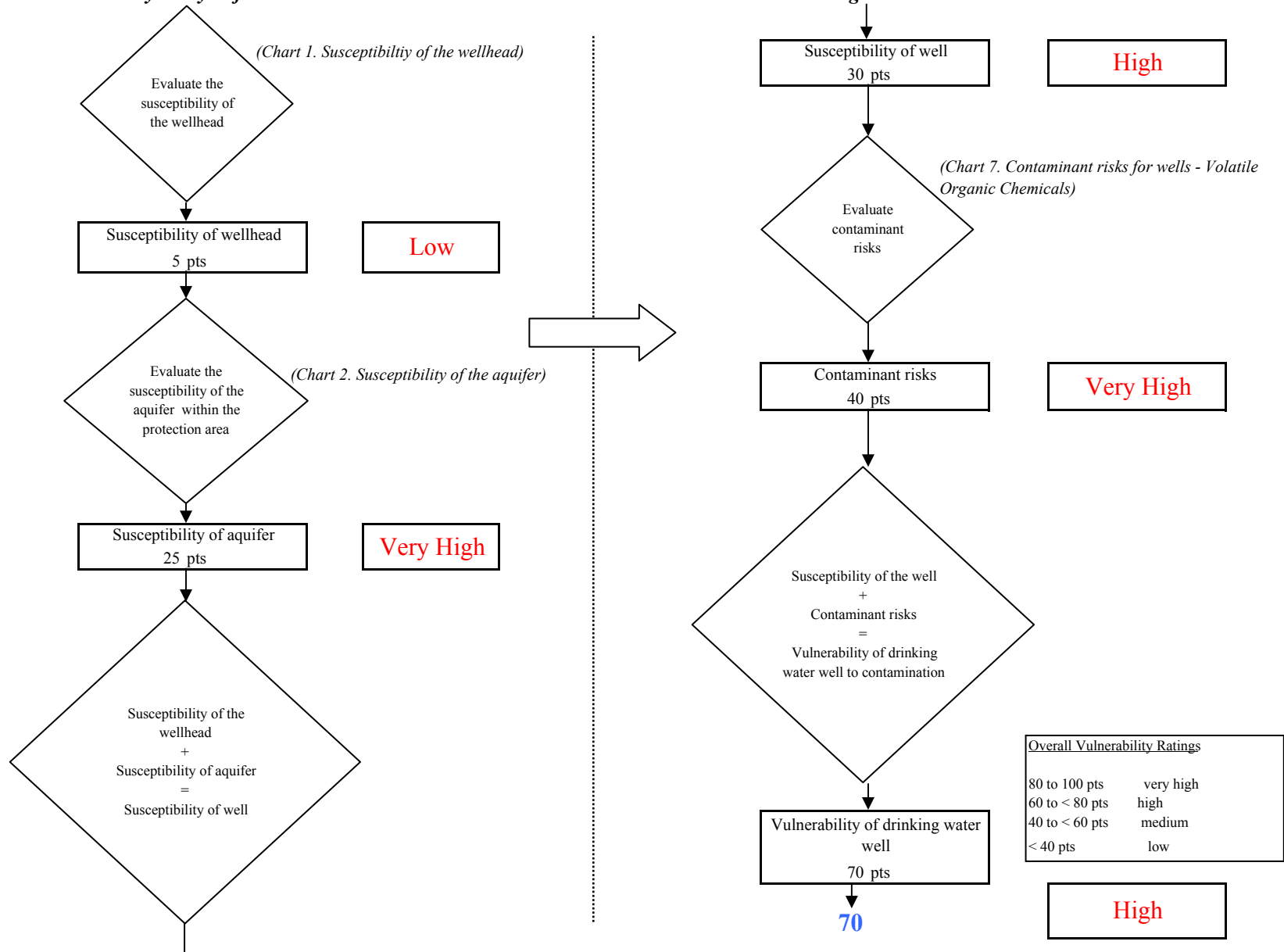


Chart 9. Contaminant risks for Peninsula Grace Brethren Church PWSID 245406.001 - Heavy Metals, Cyanide and Other Inorganic Chemicals

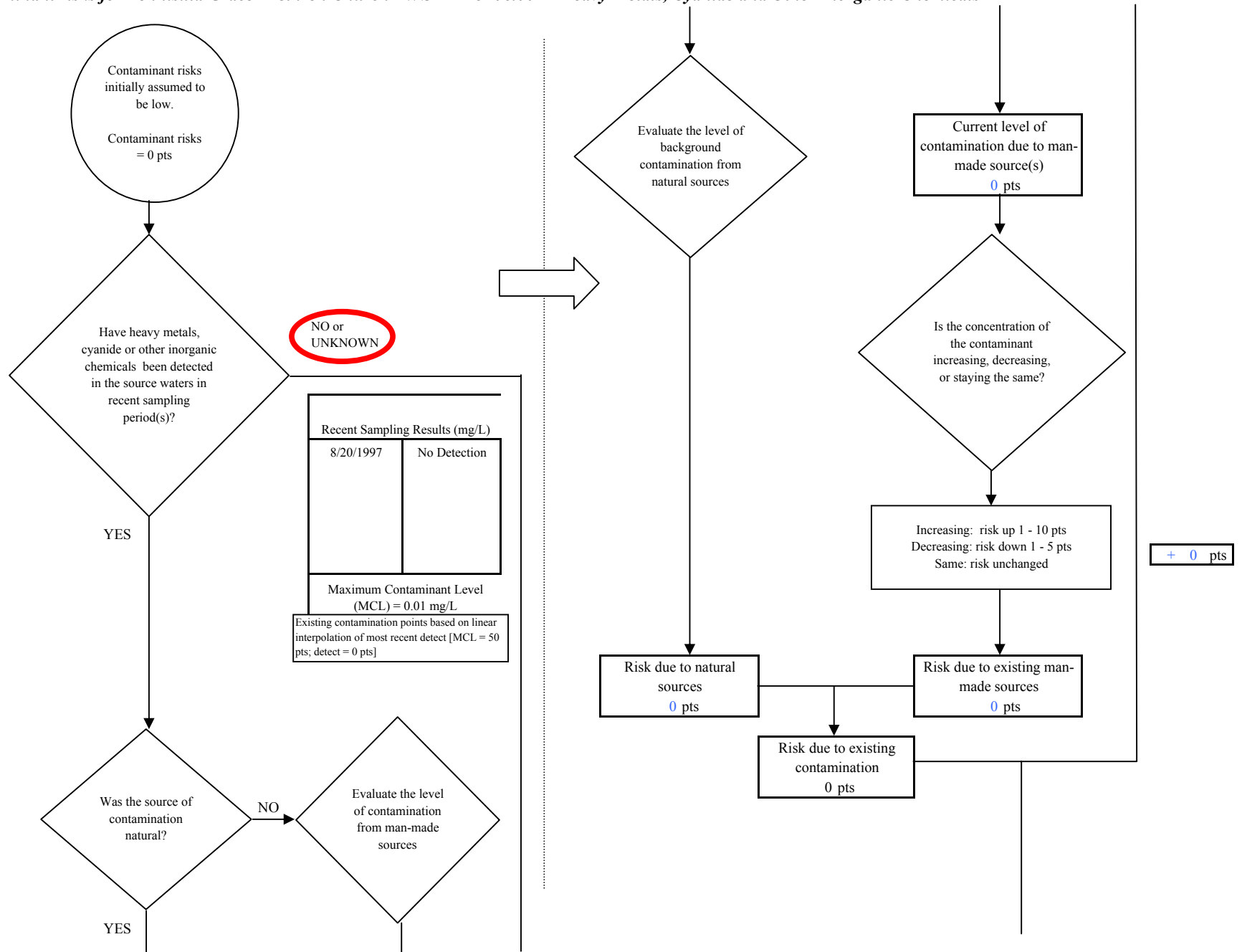


Chart 9. Contaminant risks for Peninsula Grace Brethren Church PWSID 245406.001 - Heavy Metals, Cyanide and Other Inorganic Chemicals

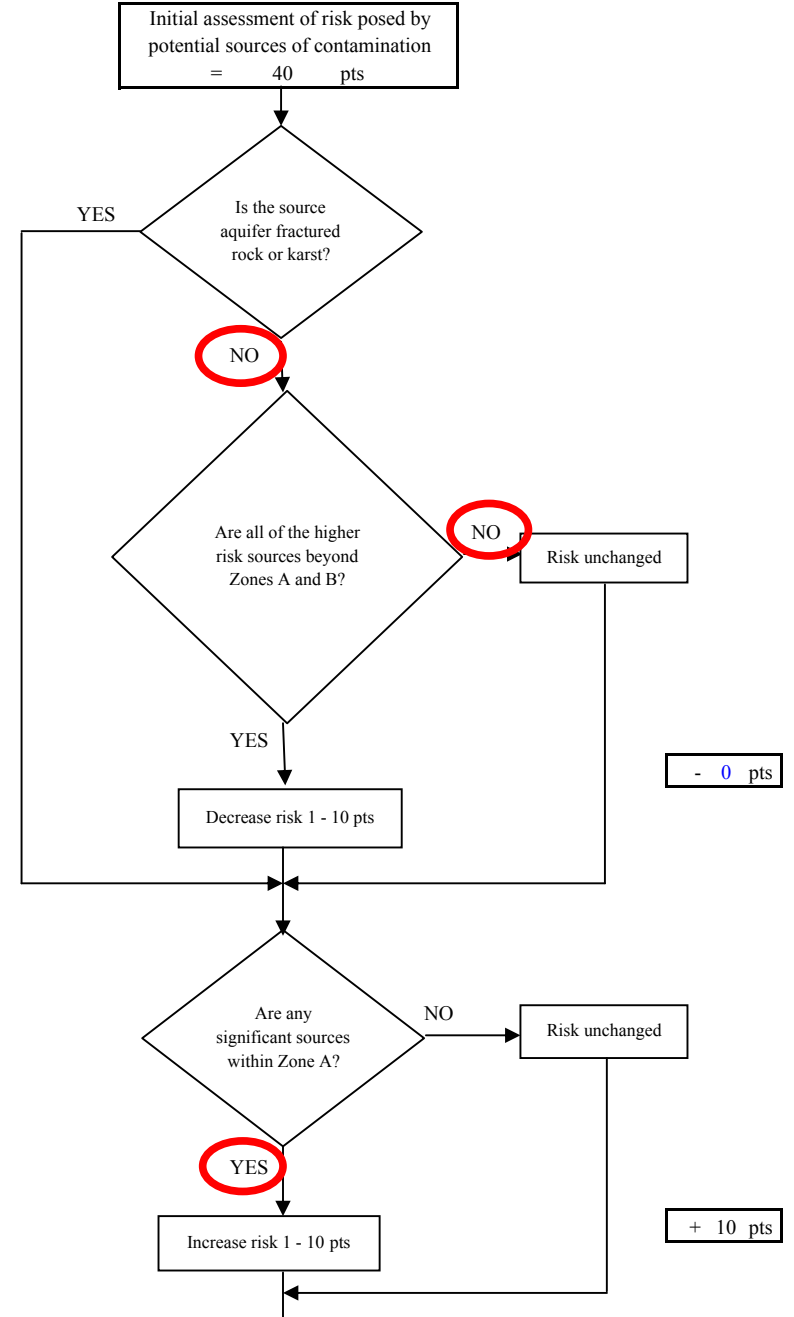
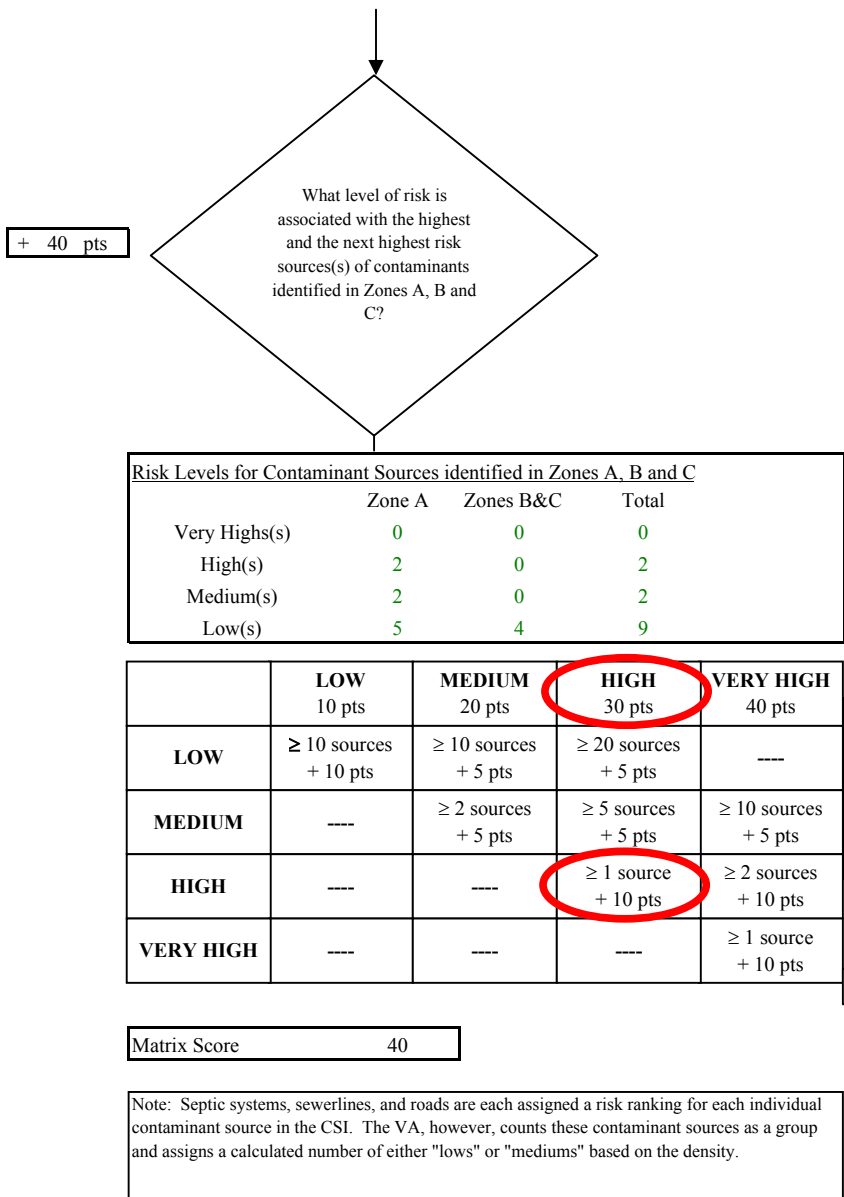
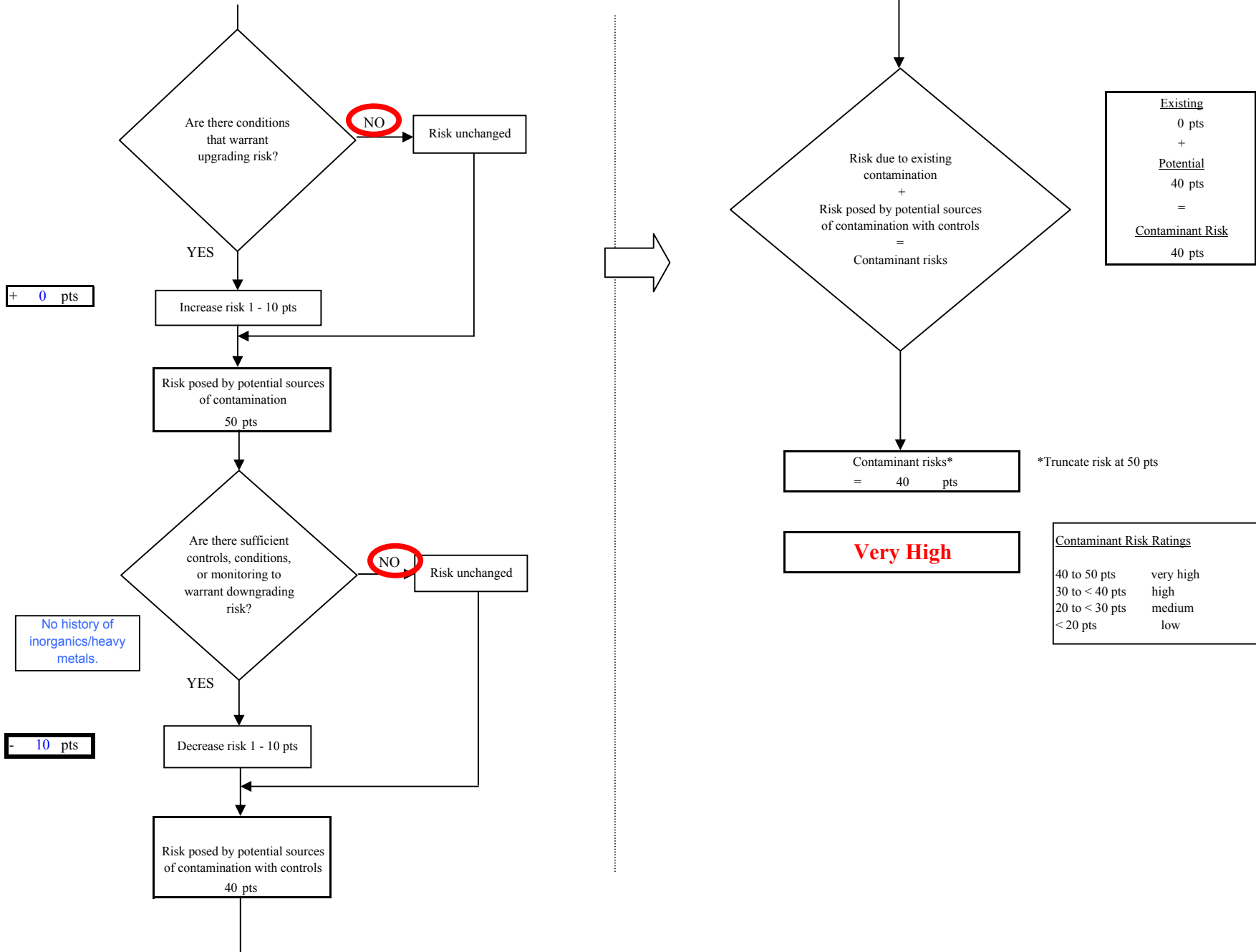
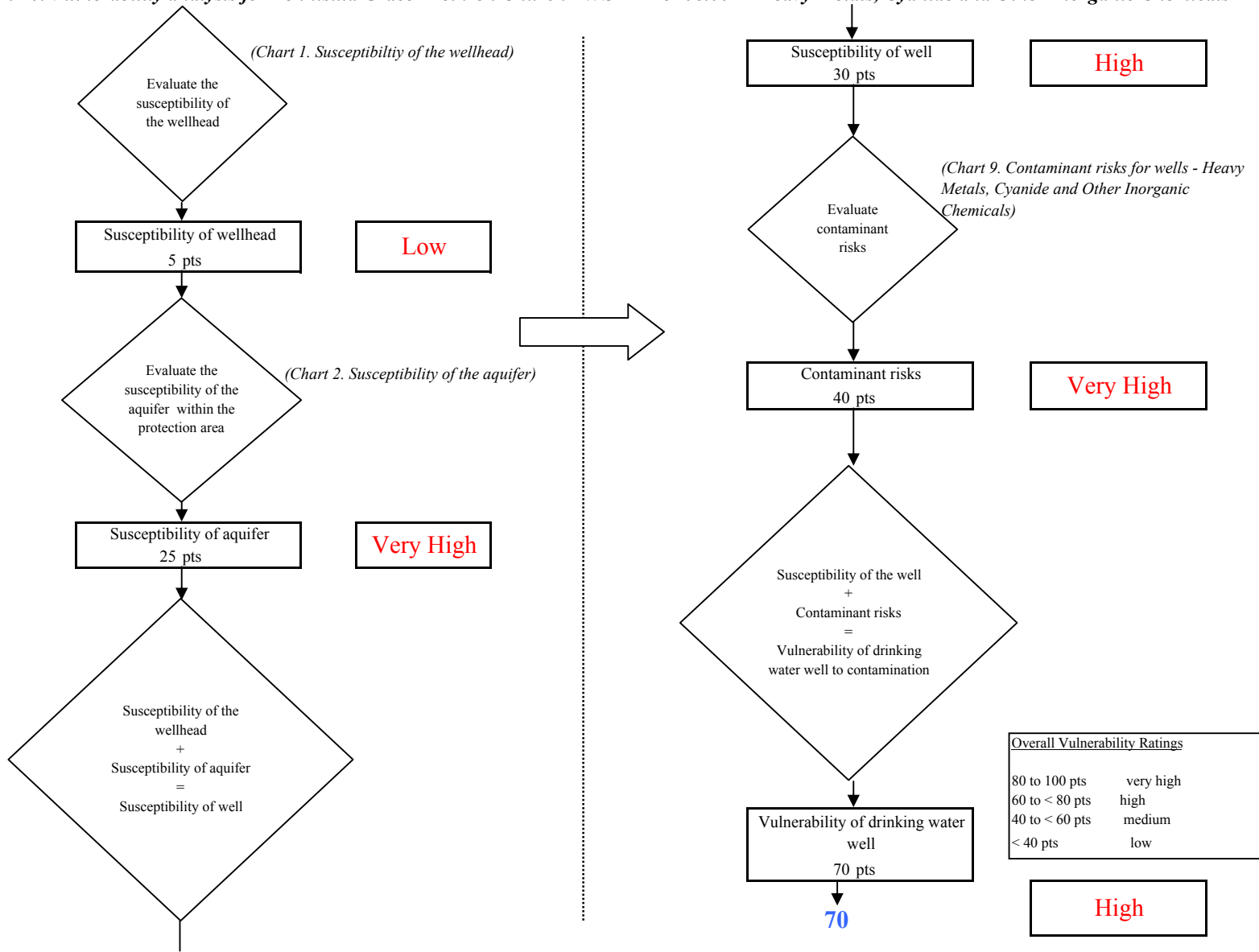


Chart 9. Contaminant risks for Peninsula Grace Brethren Church PWSID 245406.001 - Heavy Metals, Cyanide and Other Inorganic Chemicals



**Chart 10. Vulnerability analysis for Pennisula Grace Brethren Church PWSID 245406.001 - Heavy Metals, Cyanide and Other Inorganic Chemicals**





**Chart 11. Contaminant risks for Peninsula Grace Brethren Church PWSID 245406.001 - Synthetic Organic Chemicals**

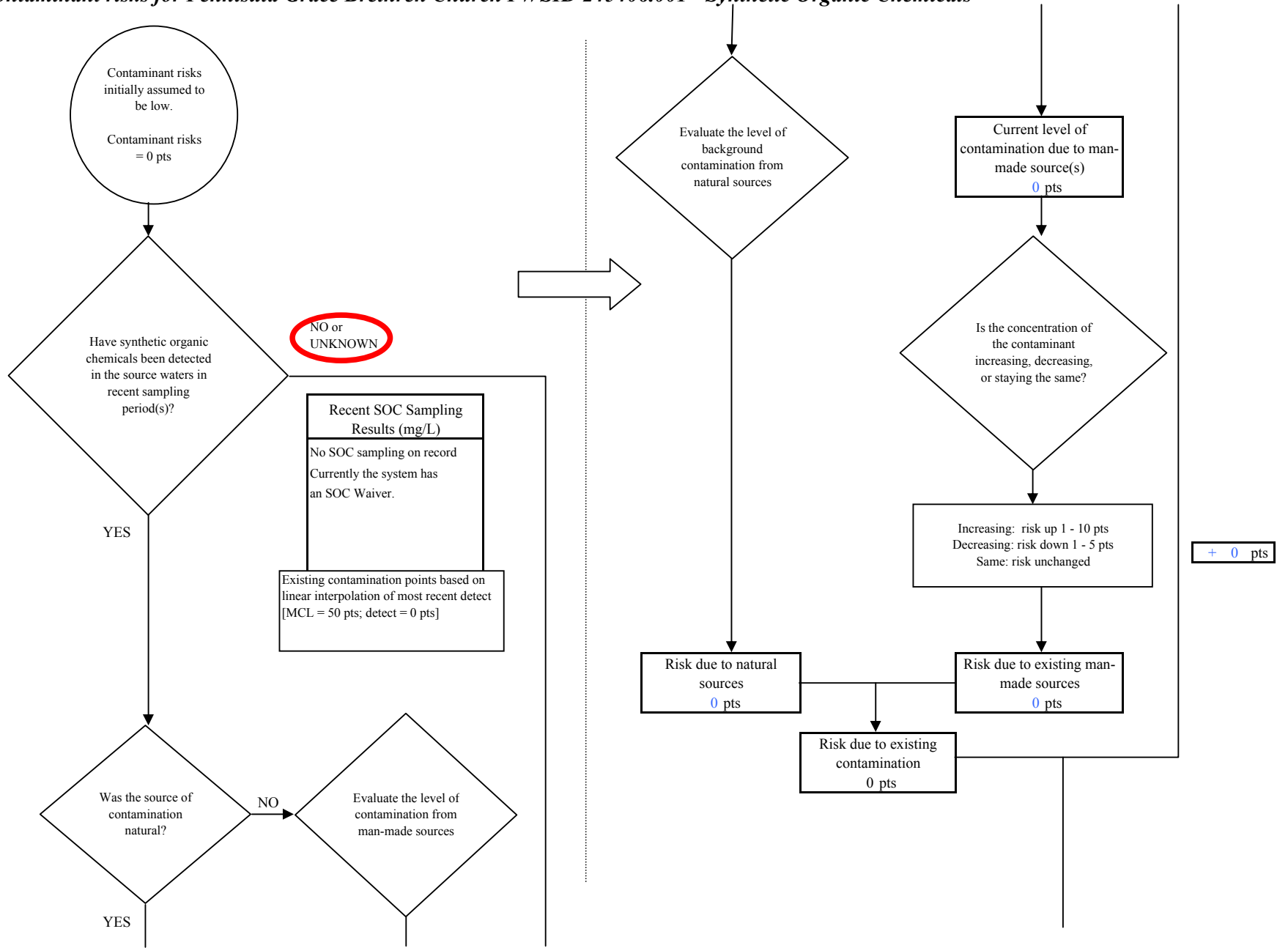


Chart 11. Contaminant risks for Peninsula Grace Brethren Church PWSID 245406.001 - Synthetic Organic Chemicals

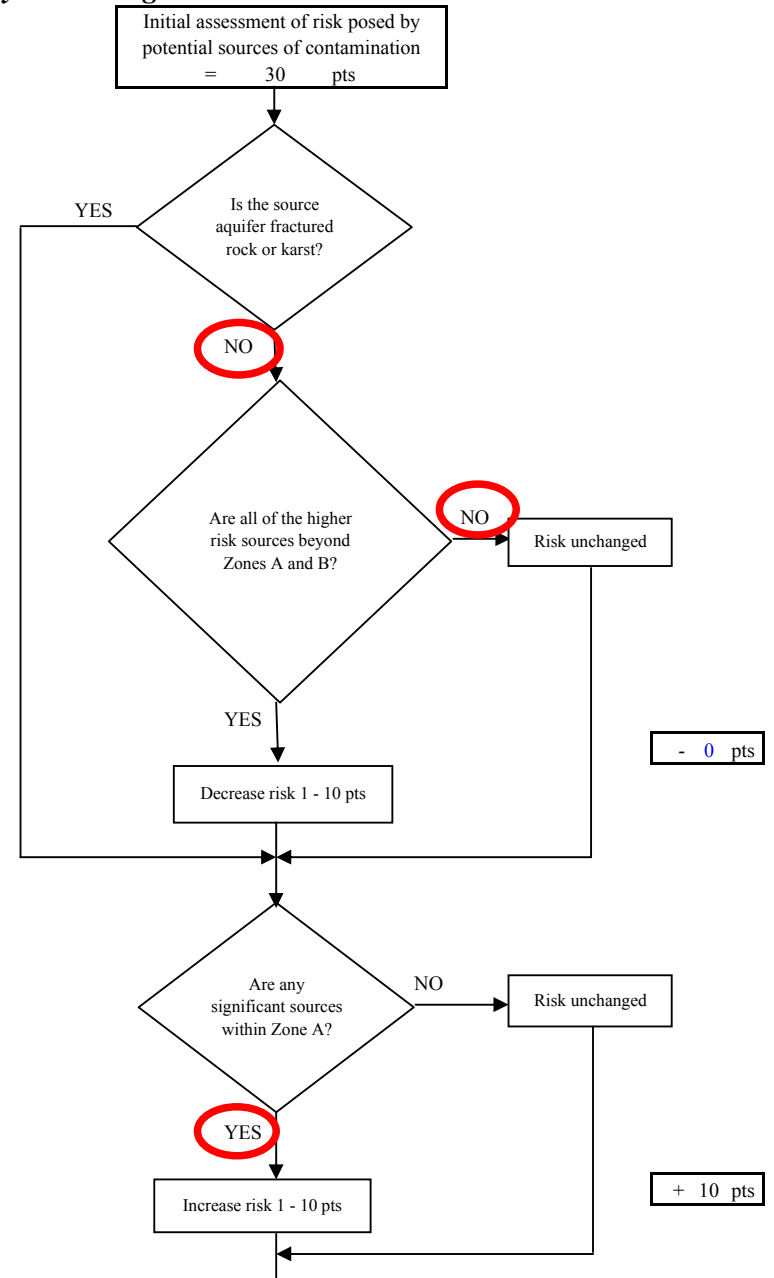
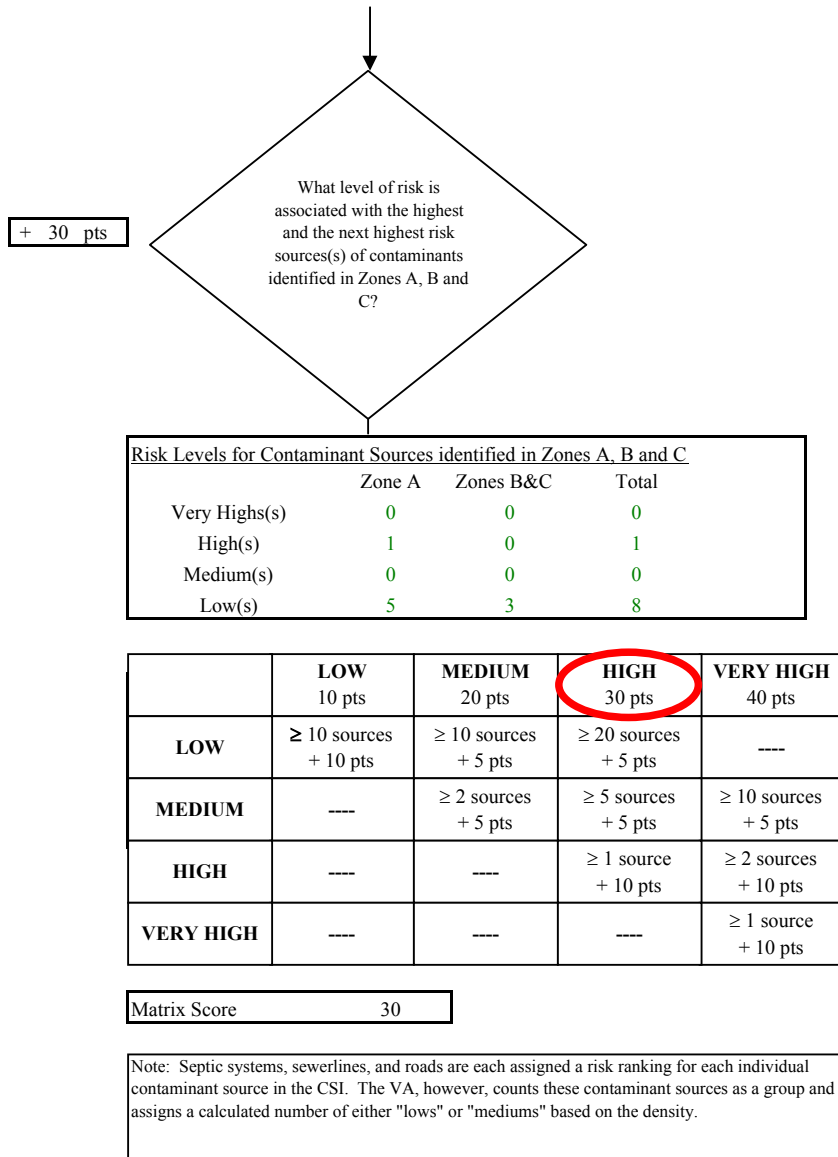
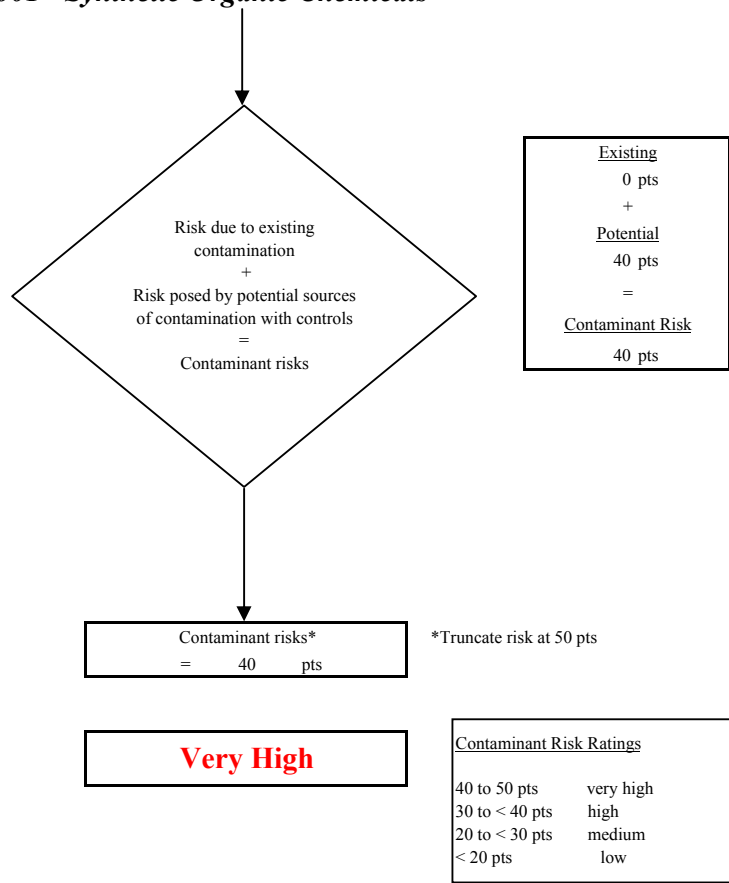
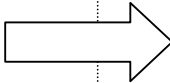
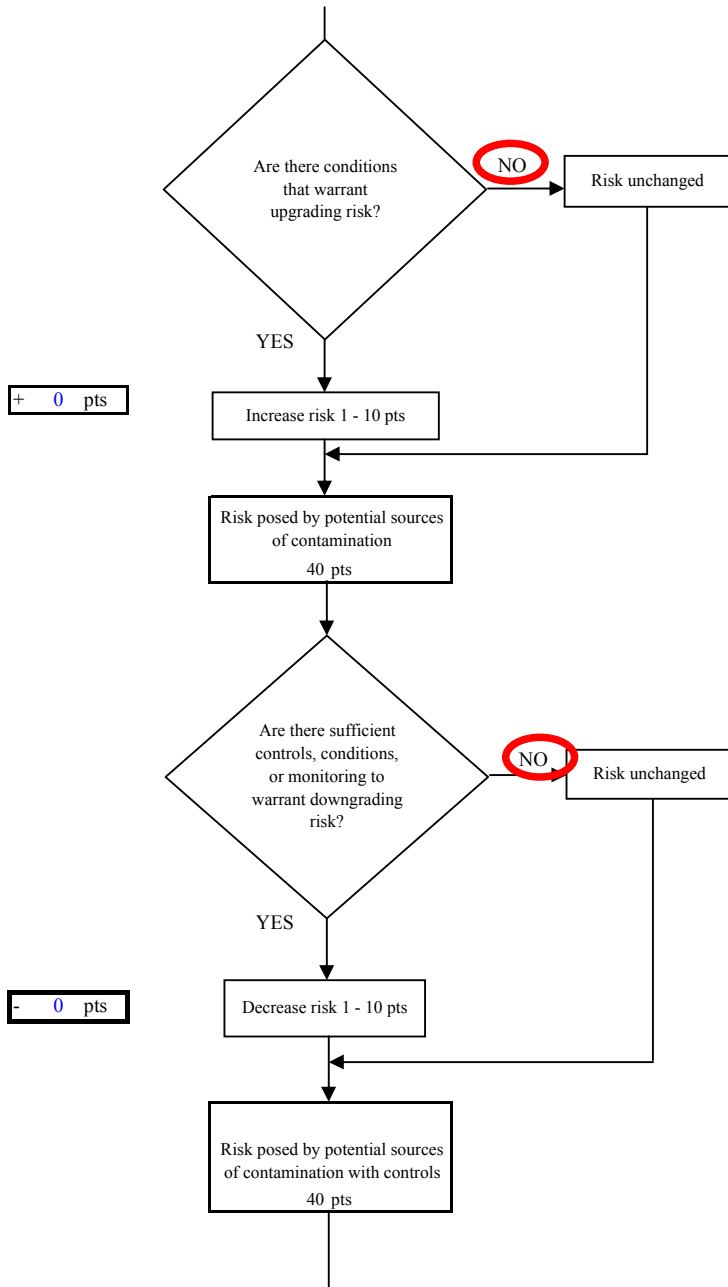
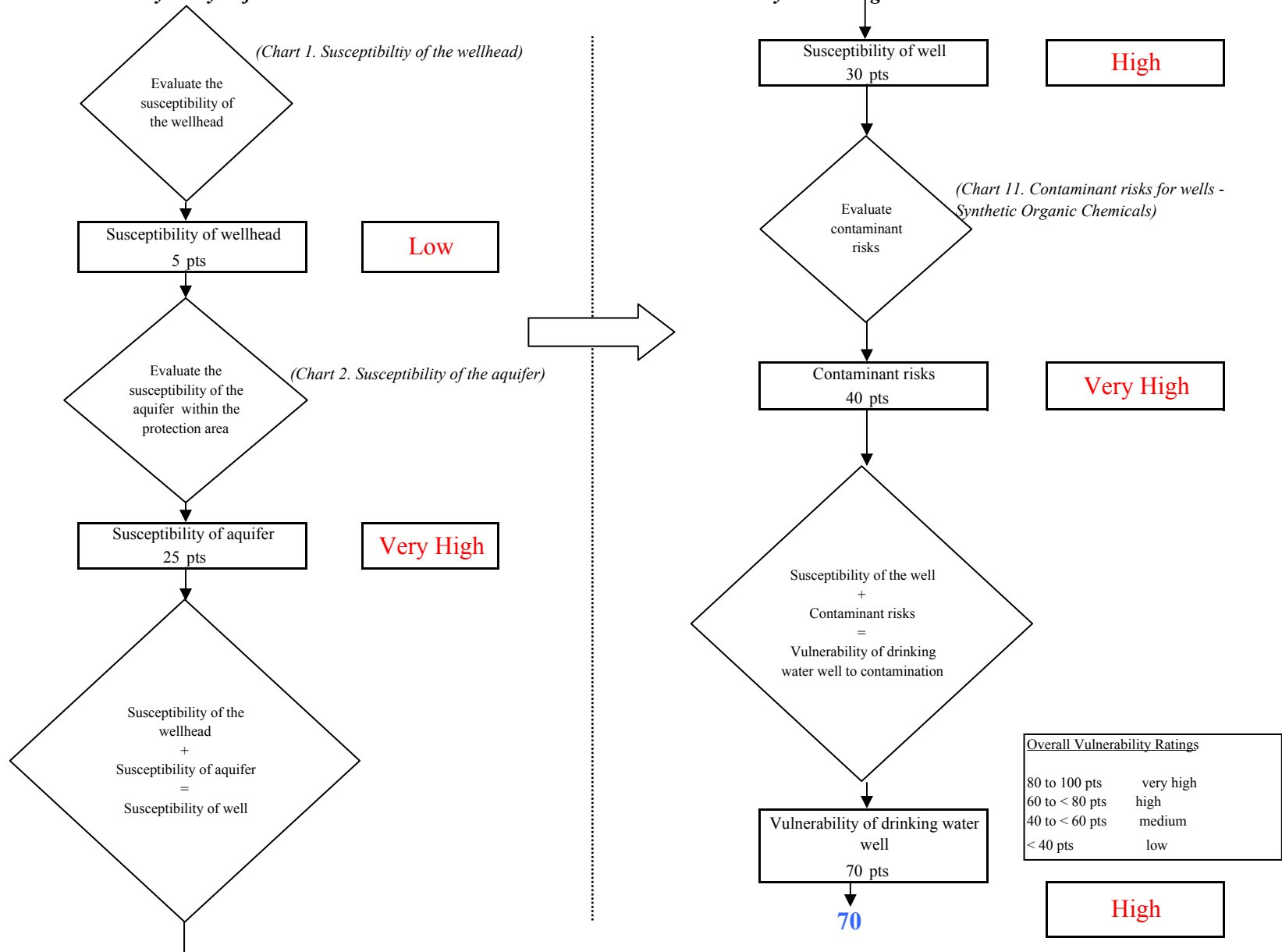


Chart 11. Contaminant risks for Peninsula Grace Brethren Church PWSID 245406.001 - Synthetic Organic Chemicals



**Chart 12. Vulnerability analysis for Pennisula Grace Brethren Church PWSID 245406.001 - Synthetic Organic Chemicals**



**Chart 13. Contaminant risks for Peninsula Grace Brethren Church PWSID 245406.001 - Other Organic Chemicals**

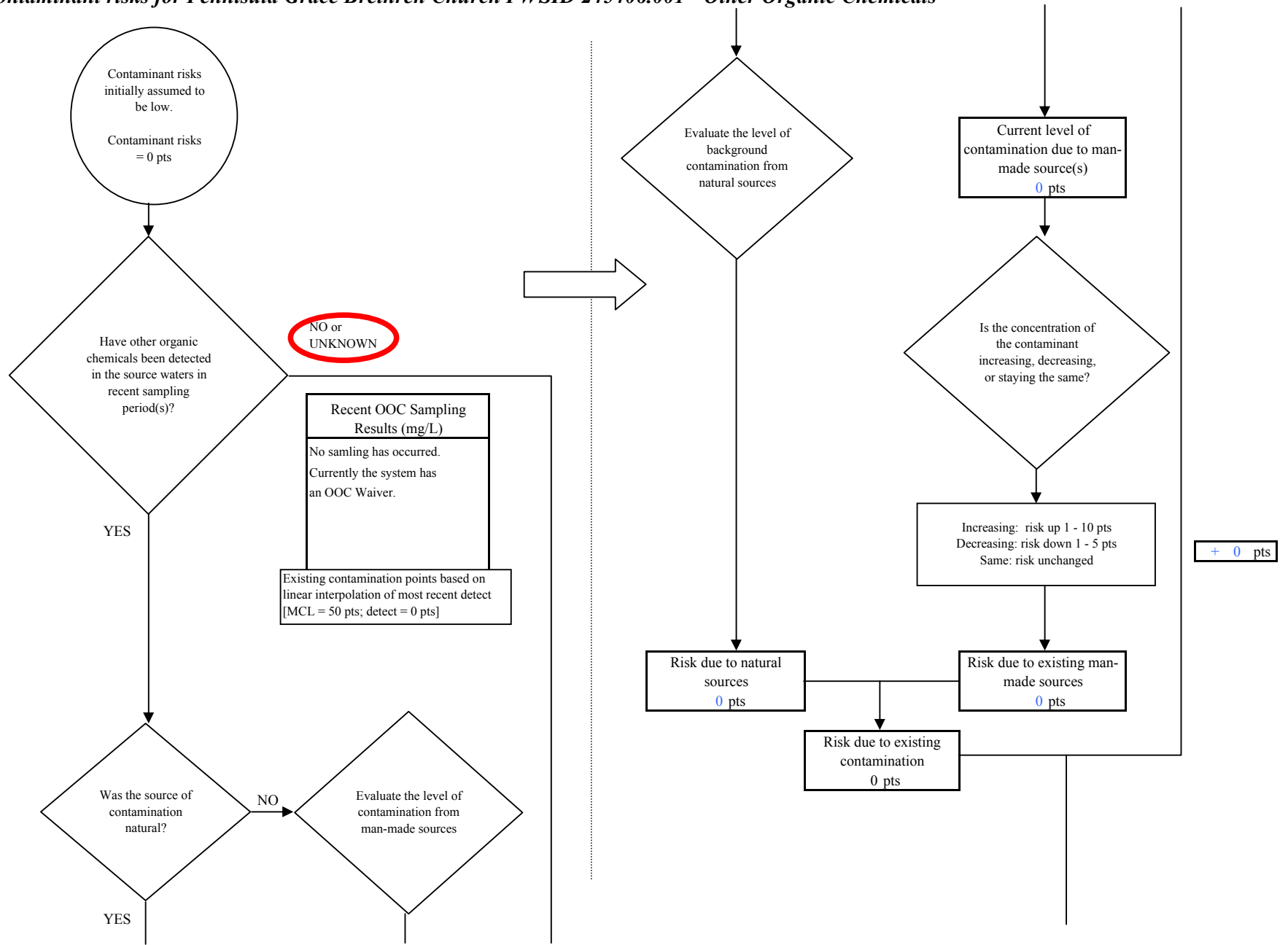
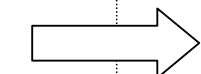
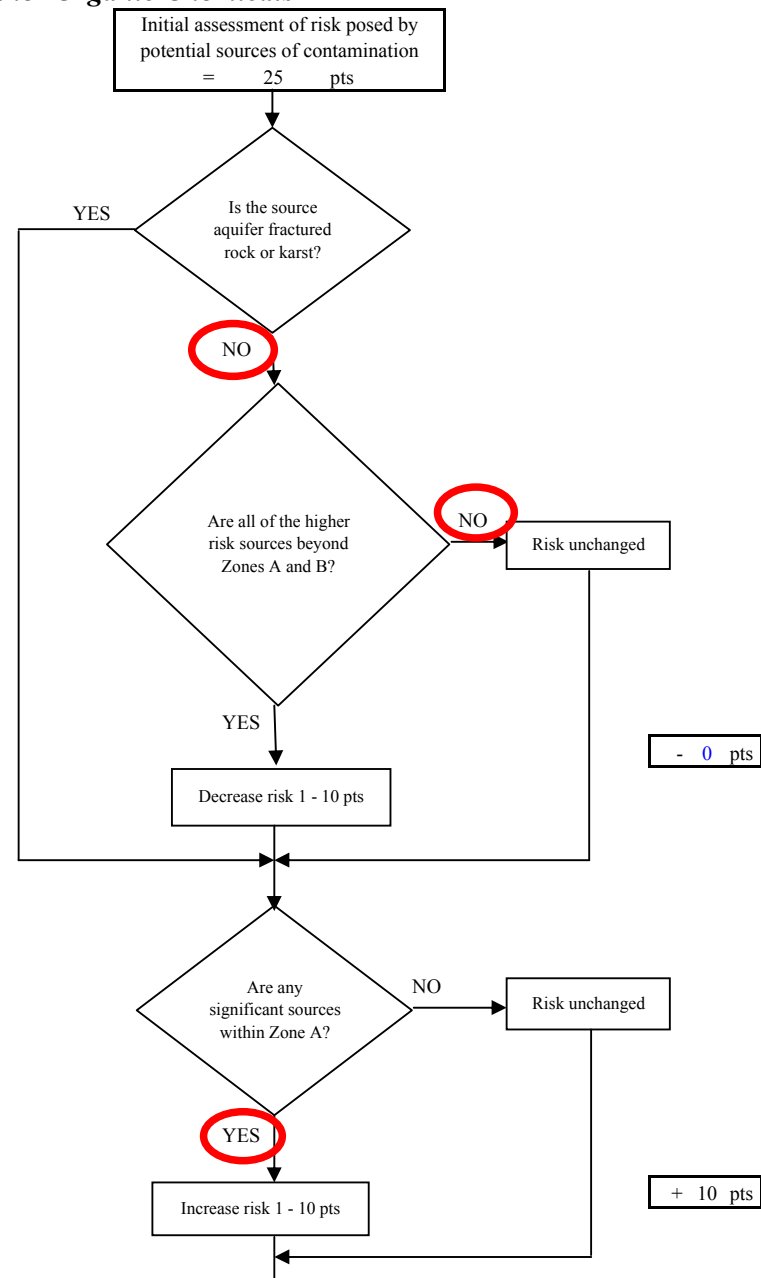
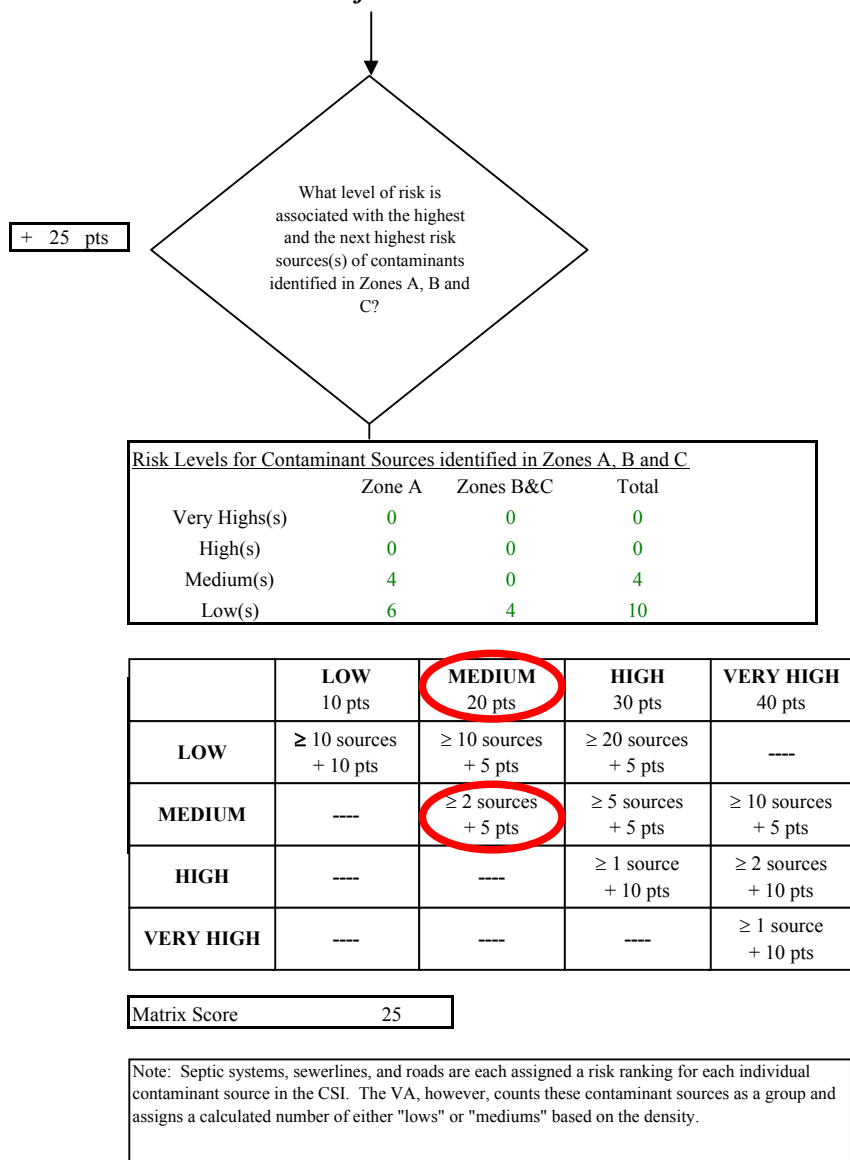
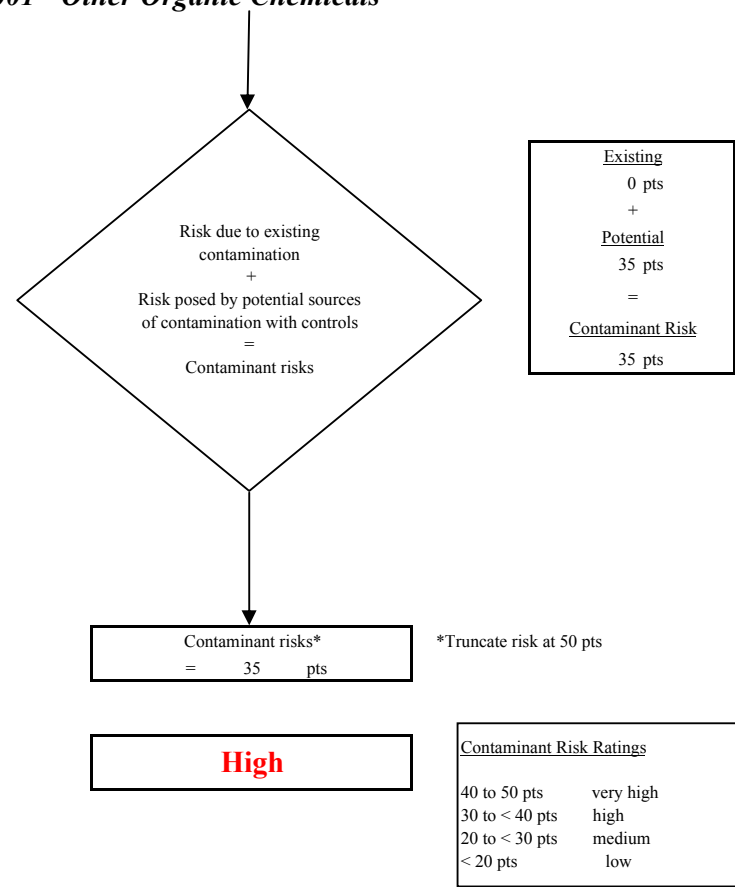
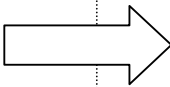
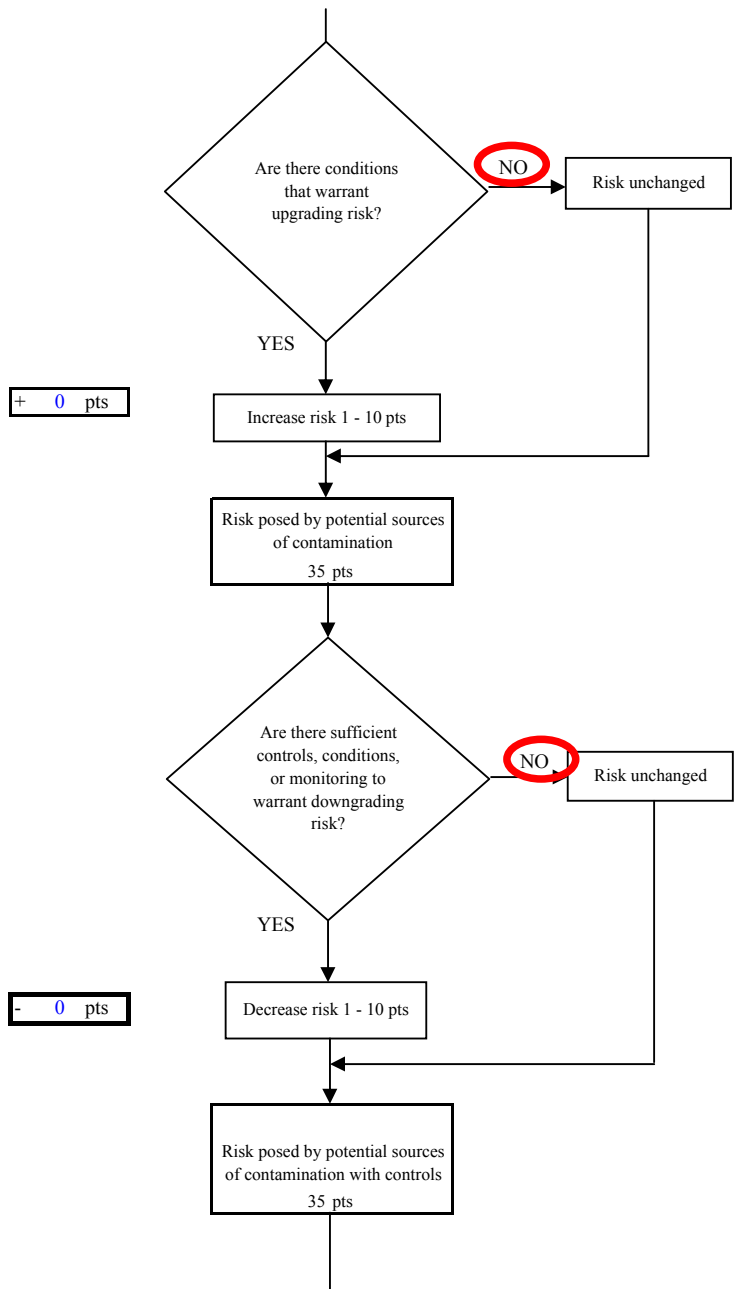


Chart 13. Contaminant risks for Peninsula Grace Brethren Church PWSID 245406.001 - Other Organic Chemicals



**Chart 13. Contaminant risks for Peninsula Grace Brethren Church PWSID 245406.001 - Other Organic Chemicals**



**Chart 14. Vulnerability analysis for Pennisula Grace Brethren Church PWSID 245406.001 - Other Organic Chemicals**

