



Source Water Assessment

A Hydrogeologic Susceptibility and
Vulnerability Assessment for
Pacific Star Seafoods
Drinking Water System,
Kenai, Alaska
Pacific Star Seafoods
PWSID # 241703.001

May 23, 2003

DRINKING WATER PROTECTION PROGRAM REPORT 492a
Alaska Department of Environmental Conservation

Source Water Assessment for Pacific Star
Seafoods Drinking Water System
Kenai, Alaska
Pacific Star Seafoods
PWSID# 241703.001

DRINKING WATER PROTECTION PROGRAM REPORT 492a

The Drinking Water Protection Program (DWPP) is producing Source Water Assessments in compliance with the Safe Drinking Water Act Amendments of 1996. Each assessment includes a delineation of the source water area, an inventory of potential and existing contaminant sources that may impact the water, a risk ranking for each of these contaminants, and an evaluation of the potential vulnerability of these drinking water sources.

These assessments are intended to provide public water systems owners/operators, communities, and local governments with the best available information that may be used to protect the quality of their drinking water. The assessments combine information obtained from various sources, including the U.S. Environmental Protection Agency, Alaska Department of Environmental Conservation (ADEC), public water system owners/operators, and other public information sources. The results of this assessment are subject to change if additional data becomes available. It is anticipated this assessment will be updated every five years to reflect any changes in the vulnerability and/or susceptibility of public drinking water source. If you have any additional information that may affect the results of this assessment, please contact the Program Coordinator of DWPP, (907) 269-7521.

CONTENTS

EXECUTIVE SUMMARY.....	1	INVENTORY OF POTENTIAL AND EXISTING CONTAMINANT SOURCES	3
PACIFIC STAR SEAFOODS PUBLIC DRINKING WATER SYSTEM	1	RANKING OF CONTAMINANT RISKS	3
PACIFIC STAR SEAFOODS DRINKING WATER PROTECTION AREA.....	2	VULNERABILITY OF THE PACIFIC STAR SEAFOODS DRINKING WATER SYSTEM	3

TABLES

Table 1. Definition of Zones	3
Table 2. Susceptibility	4
Table 3. Contaminant Risks	4
Table 4. Overall Vulnerability.....	4

APPENDICES

APPENDIX	A. Pacific Star Seafoods Drinking Water Protection Area (Map 1)
	B. Contaminant Source Inventory for Pacific Star Seafoods (Table 1) Contaminant Source Inventory and Risk Ranking for Pacific Star Seafoods – Bacteria and Viruses (Table 2) Contaminant Source Inventory and Risk Ranking for Pacific Star Seafoods – Nitrates/Nitrites (Table 3) Contaminant Source Inventory and Risk Ranking for Pacific Star Seafoods – Volatile Organic Chemicals (Table 4)
	C. Pacific Star Seafoods Drinking Water Protection Area and Potential and Existing Contaminant Sources (Map 1)
	D. Vulnerability Analysis for Contaminant Source Inventory and Risk Ranking for Pacific Star Seafoods Public Drinking Water Source (Charts 1 – 8)

Source Water Assessment for Pacific Star Seafoods Source of Public Drinking Water, Kenai, Alaska

Drinking Water Protection Program Alaska Department of Environmental Conservation

EXECUTIVE SUMMARY

The public water system for Pacific Star Seafoods is a Class B (transient/non-community) water system consisting of one well. Pacific Star Seafoods is located at 400 Bridge Access Road, Tract E, Daubenspeck Property Subdivision, Kenai, Alaska. The wellhead received a susceptibility rating of **Very High** and the aquifer received a susceptibility rating of **Very High**. Combining these two ratings produces a **Very High** rating for the natural susceptibility of the well. Identified potential and current sources of contaminants for the Pacific Star Seafoods public drinking water source include: construction trade areas and materials, industrial process water disposal wells, seafood processing, open and closed underground storage tanks (UST), ADEC recognized contaminated sites, gasoline stations, pharmacies, photography supplies/photo processing laboratories, domestic wastewater collection systems, body shops, bowling centers, florists, gasoline stations, heavy equipment rental/storage, motor vehicle repair shops, motor vehicle waste disposal wells, closed leaking underground storage tanks (LUST), aircraft maintenance shops, motor vehicle rental facilities, machine and metal works shops, and highways and roads. These identified potential and existing sources of contamination are considered as sources of bacteria and viruses, nitrates and/or nitrites, and volatile organic chemicals. Overall, the public water source for Pacific Star Seafoods received a vulnerability rating of **Very High** for the bacteria and viruses, nitrates and nitrites, and volatile organic chemicals contaminant categories.

PACIFIC STAR SEAFOODS PUBLIC DRINKING WATER SYSTEM

The Pacific Star Seafoods public water system (PWS) is a Class B (transient/non-community) water system. The system consists of one well located at 400 Bridge Access Road, Kenai, Alaska (T05N, R11W, Section 05) (See Map 1 of Appendix A). Kenai is part of the Kenai Peninsula Borough, which is located directly south of the city of Anchorage (Please see the inset of

Map 1 in Appendix A for location). The borough encompasses 25,600 square miles, of which only 15,700 square miles is land.

The Kenai Peninsula is broken into two distinct geographic areas; the Kenai Mountains and the Kenai Lowlands. Kenai and its surrounding communities are located in the Kenai Lowlands. Communities located within the Kenai Lowlands include Sterling, Soldotna, Kenai, Nikiski, Clam Gulch, Ninilchik, and Homer.

The Kenai Peninsula area topography varies from about 3,000 feet to 5,000 feet above sea level in the Kenai Mountains, the highest point being about 6,400 feet above sea level. The Kenai Peninsula is dotted with many lakes and small streams, including three large lakes (Kenai Lake, Skilak Lake, and Tustumena Lake) and two substantial rivers (Kenai River, and Kasilof River) (USGS 1915).

The Pacific Star Seafoods water system is located within the Kenai Lowlands, which is a sub-province of the Cook Inlet-Susitna Lowland physiographic region. The Kenai Lowland is a glaciated coastal shelf situated west of the northeast-trending Kenai Mountains. Approximately 100 miles long, the coastal shelf is bordered on the west by Cook Inlet, on the east by Kenai Mountains, on the north by Turnagain Arm, and on the south by the Caribou Hills and Kachemak Bay. The following summary of regional geology and hydrogeology is based on studies by Bailey and Hogan (1995); Freethey and Scully (1980); Glass (1996); Hartman, et al. (1972); and Karlstrom (1964).

The Kenai Lowland is underlain by bedrock. Tertiary sedimentary bedrock is more than 500 feet below the city of Kenai airport, but is exposed along beach cliffs and road cuts near the southwest end of the lowland. Unconsolidated surficial deposits of Quaternary age include coastal deposits, glaciolacustrine deposits, glaciofluvial deposits, glacial moraine deposits, and periglacial wind deposits. Unconsolidated Quaternary cover on the lowlands generally thickens from south to North

being thin or absent in the Homer area, and over 750 feet thick near Nikiski.

The most significant groundwater resources of the Kenai Lowlands are contained in Quaternary coarse-grained sands and gravels. Flood plain, river terrace and other alluvial deposits are common aquifer materials in the area, and are characterized by high rates of recharge, and large saturated thicknesses. Other favorable materials include proglacial lake and associated river deposits and glacial outwash deposits consisting of meltwater sorted sand and gravel material. Unsorted glacial moraine and drift deposits generally have poor groundwater yields, as do discontinuous layers of confining clays and silt that are common throughout the unconsolidated materials. The relatively thicker sequence of unconsolidated sediments in the northern portions of the Kenai Lowlands locally hosts thicker, more extensive clay aquitards and multiple aquifers.

The Kenai Peninsula area has a central water system, however, many homes and businesses in the area rely on individual wells for their water supply. Most of these wells are deep with depths between 50 and 200 feet. Static water levels in many of these wells are between 10 and 30 feet below the surface. Although groundwater quality can vary significantly in short distance, groundwater supplies are abundant in the area.

Although groundwater quality can vary significantly in short distance, groundwater supplies are abundant in the area. The Kenai River watershed covers over 2,200 square miles and runs over 80 miles in length. This watershed includes the towns of Cooper Landing, Sterling, Soldotna, and Kenai. The Kenai River Center, GW Scientific, and Restoration Science and Engineering are currently investigating the interactions that occur between the Kenai River Watershed and groundwater in the Lower Kenai area (Soldotna) (http://www.kenai-watershed.org/spawning/kenai_river/kenai_river.html, 2002).

According to information obtained from ADEC records for the Pacific Star Seafoods PWS, the depth of the well is 125 feet below ground surface (bgs), and is assumed to be screened in a confined aquifer. The thickness of the confining layer is unknown. The well is screened in glacial outwash primarily composed of gravel, and the static water level is assumed to be approximately 29 feet bgs, based on an adjacent well. The well is located in a floodplain.

The Sanitary Survey (08/12/99) for the water system

indicated that the land is not sloped away from the well providing adequate surface water drainage. The well is not grouted according to ADEC regulations. Proper grouting provides added protection against contaminants traveling down the annulus along the well casing and into source waters.

This system operates year round and serves 20 residents and up to 150 non-residents through one service connection.

PACIFIC STAR SEAFOODS DRINKING WATER PROTECTION AREA

In order to evaluate whether a drinking water source is at risk, we must first evaluate what are the most likely pathways for surface contamination to reach the groundwater. These areas are determined by looking at the characteristics of the soil, groundwater, aquifer, and well.

The most probable area for contamination to reach the drinking water well is the area that contributes water to the well, the groundwater recharge area. This area is designated as the drinking water protection area (DWPA). Because releases of contaminants within the protection area are most likely to impact the drinking water well, this area will serve as the focus for voluntary protection efforts.

An analytical calculation was used to determine the size and shape of the DWPA for Pacific Star Seafoods. The input parameters describing the attributes of the aquifer in this calculation were adopted from Groundwater (*Freeze and Cherry 1979*). Available geology and groundwater contours were also considered to take into account any uncertainties in groundwater flow and aquifer characteristics to arrive at a meaningful protection area.

The protection areas established for wells by the ADEC are usually separated into four zones, limited by the watershed. These zones correspond to differences in the time-of-travel (TOT) of the water moving through the aquifer to the well (Please refer to the Guidance Manual for Class B Public Water Systems for additional information).

The time of travel for contaminants within the water varies and is dependent on the physical and chemical characteristics of each contaminant. The following is a summary of the four protection area zones for wells and the calculated time-of-travel for each:

Table 1. Definition of Zones

Zone	Definition
A	¼ the distance for the 2-yr. time -of-travel
B	Less than the 2 year time-of-travel
C	Less Than the 5 year time -of-travel
D	Less than the 10 year time -of-travel

The DWPA for Pacific Star Seafoods was determined using an analytical calculation and includes Zone A, B, C, and D (See Map 1 of Appendix A).

INVENTORY OF POTENTIAL AND EXISTING CONTAMINANT SOURCES

The Drinking Water Protection Program has completed an inventory of potential and existing sources of contamination within the Pacific Star Seafoods DWPA. This inventory was completed through a search of agency records and other publicly available information. Potential sources of contamination to the drinking water aquifer include a wide range of categories and types. Potential drinking water contaminants are found within agricultural, residential, commercial, and industrial areas, but can also occur within areas that have little or no development.

For the basis of all Class B public water system assessments, three categories of drinking water contaminants were inventoried. They include:

- Bacteria and viruses;
- Nitrates and/or nitrites;
- Volatile organic chemicals

The sources are displayed on Map 1 of Appendix C and summarized in Table 1 of Appendix B.

RANKING OF CONTAMINANT RISKS

Once the potential and existing sources of contamination have been identified, they are assigned a ranking according to what type and level of risk they represent. Ranking of contaminant risks for a “potential” or “existing” source of contamination is a function of toxicity and volumes of specific contaminants associated with that source. Rankings include:

- Low;
- Medium;
- High; and
- Very High.

The time-of-travel for contaminants within the water varies and is dependent on the physical and chemical characteristics of each contaminant. Bacteria and Viruses are only inventoried in Zones A and B because of their short life span. Only “Very High” and “High” rankings are inventoried within the outer Zone D due to the probability of contaminant dilution by the time the contaminants get to the well.

Tables 2 through 4 in Appendix B contain the ranking of potential and existing sources of contamination with respect to bacteria and viruses, nitrates and/or nitrites, and volatile organic chemicals.

VULNERABILITY OF THE PACIFIC STAR SEAFOODS DRINKING WATER SYSTEM

Vulnerability of a drinking water source to contamination is a combination of two factors:

- Natural susceptibility; and
- Contaminant risks.

Appendix D contains eight charts, which together form the ‘Vulnerability Analysis’ for a source water assessment for a public drinking water source. Chart 1 analyzes the ‘Susceptibility of the Wellhead’ to contamination by looking at the construction of the well and its surrounding area. Chart 2 analyzes the ‘Susceptibility of the Aquifer’ to contamination by looking at the naturally occurring attributes of the water source and influences on the groundwater system that might lead to contamination. Chart 3 analyzes ‘Contaminant Risks’ for the drinking water source with respect to bacteria and viruses. The ‘Contaminant Risks’ portion of the analysis considers potential sources of contaminants as well as a review of contamination that has or may have occurred, but has not arrived or been detected at the well. Lastly, Chart 4 contains the ‘Vulnerability Analysis for Bacteria and Viruses’. Charts 5 through 8 contain the Contaminant Risks and Vulnerability Analyses for nitrates and nitrites and volatile organic chemicals, respectively.

A score for the Natural Susceptibility is reached by considering the properties of the well and the aquifer.

$$\begin{array}{r}
 \text{Susceptibility of the Wellhead (0 – 25 Points)} \\
 \text{(Chart 1 of Appendix D)} \\
 + \\
 \text{Susceptibility of the Aquifer (0 – 25 Points)} \\
 \text{(Chart 2 of Appendix D)} \\
 =
 \end{array}$$

Natural Susceptibility (Susceptibility of the Well)
(0 – 50 Points)

A ranking is assigned for the Natural Susceptibility according to the point score:

Natural Susceptibility Ratings	
40 to 50 pts	Very High
30 to < 40 pts	High
20 to < 30 pts	Medium
< 20 pts	Low

The well for Pacific Star Seafoods is assumed to be completed in a confined aquifer. Confined aquifers are less susceptible to potential groundwater quality impacts posed by the migration of surface water contaminants downward from the surface. Table 2 shows the Susceptibility scores and ratings for Pacific Star Seafoods.

Table 2. Susceptibility

	Score	Rating
Susceptibility of the Wellhead	25	Very High
Susceptibility of the Aquifer	25	Very High
Natural Susceptibility	50	Very High

Contaminant risks to a drinking water source depend on the type, number or density, and distribution of contaminant sources. This score has been derived from an examination of existing and historical contamination that has been detected at the drinking water source through routine sampling. It also evaluates potential sources of contamination. Flow charts are used to assign a point score, and ratings are assigned in the same way as for the natural susceptibility:

Contaminant Risk Ratings	
40 to 50 pts	Very High
30 to < 40 pts	High
20 to < 30 pts	Medium
< 20 pts	Low

Table 3 summarizes the Contaminant Risks for each category of drinking water contaminants.

Table 3. Contaminant Risks

Category	Score	Rating
Bacteria and Viruses	50	Very High
Nitrates and/or Nitrites	50	Very High
Volatile Organic Chemicals	50	Very High

Finally, an overall vulnerability score is assigned for each water system by combining each of the contaminant risk scores with the natural susceptibility score:

Natural Susceptibility (0 – 50 points)

+

Contaminant Risks (0 – 50 points)

=

Vulnerability of the
Drinking Water Source to Contamination (0 – 100).

Again, rankings are assigned according to a point score:

Overall Vulnerability Ratings	
80 to 100 pts	Very High
60 to < 80 pts	High
40 to < 60 pts	Medium
< 40 pts	Low

Table 4 contains the overall vulnerability scores (0 – 100) and ratings for each of the three categories of drinking water contaminants. Note: scores are rounded off to the nearest five.

Table 4. Overall Vulnerability

Category	Score	Rating
Bacteria and Viruses	100	Very High
Nitrates and Nitrites	100	Very High
Volatile Organic Chemicals	100	Very High

Bacteria and Viruses

The contaminant risk for bacteria and viruses is Very High. The risk is primarily attributed to the presence of three industrial process water disposal wells located

in Zone A (See Chart 3 – Contaminant Risks for Bacteria and Viruses in Appendix D).

Only a small amount of bacteria and viruses are required to endanger public health. Bacteria and viruses have not been detected during recent water sampling of the system at Pacific Star Seafoods. After combining the contaminant risk for bacteria and viruses with the natural susceptibility of the well, the overall vulnerability of the well to contamination is **Very High**.

Nitrates and Nitrites

The contaminant risk for nitrates and nitrites is Very High. The high risk to this source of public drinking water is primarily attributed to the presence of three industrial process water disposal wells located in Zone A, and reported nitrate concentrations from recent sampling events (See Chart 5 - Contaminant Risks for Nitrates and/or Nitrites in Appendix D). Nitrates are very mobile, moving at approximately the same rate as water.

Sampling history for the Pacific Star Seafoods well indicates that nitrate concentrations have been reported as non-detect in recent years. Nitrate concentrations in uncontaminated groundwater are typically less than 2 mg/L, therefore, nitrate concentrations above 2 mg/L may be indicative of man-made sources. The nitrate concentration from the most recent sampling event is 0% (0.0 mg/L) of the Maximum Contaminant Level (MCL) of 10 mg/L. The MCL is the maximum level of contaminant that is allowed to exist in drinking water and still be consumed by humans without harmful health effects.

Nitrate levels are often derived from the decomposition of organic matter in soils. After combining the contaminant risk for nitrates and nitrites with the natural susceptibility of the well, the overall vulnerability of the well to nitrate and nitrite contamination remains **Very High**.

Volatile Organic Chemicals

The contaminant risk for volatile organic chemicals is Very High. The risk is primarily attributed to the presence of two industrial process water disposal wells, and an ADEC recognized contaminated site in Zone A, a gasoline station and three underground storage tanks (USTs) in Zone B, a gasoline station, motor vehicle waste disposal well, and two underground storage tanks (USTs) in Zone C, and three motor vehicle waste disposal wells, a machine and metal work shop, two underground storage tanks (USTs), and an ADEC recognized contaminated site

in Zone D (See Chart 7 – Contaminant Risks for Volatile Organic Chemicals in Appendix D).

The drinking water at Pacific Star Seafoods has not been sampled for volatile organic chemicals. After combining the contaminant risk for volatile organic chemicals with the natural susceptibility of the well, the overall vulnerability of the well to contamination is **Very High**.

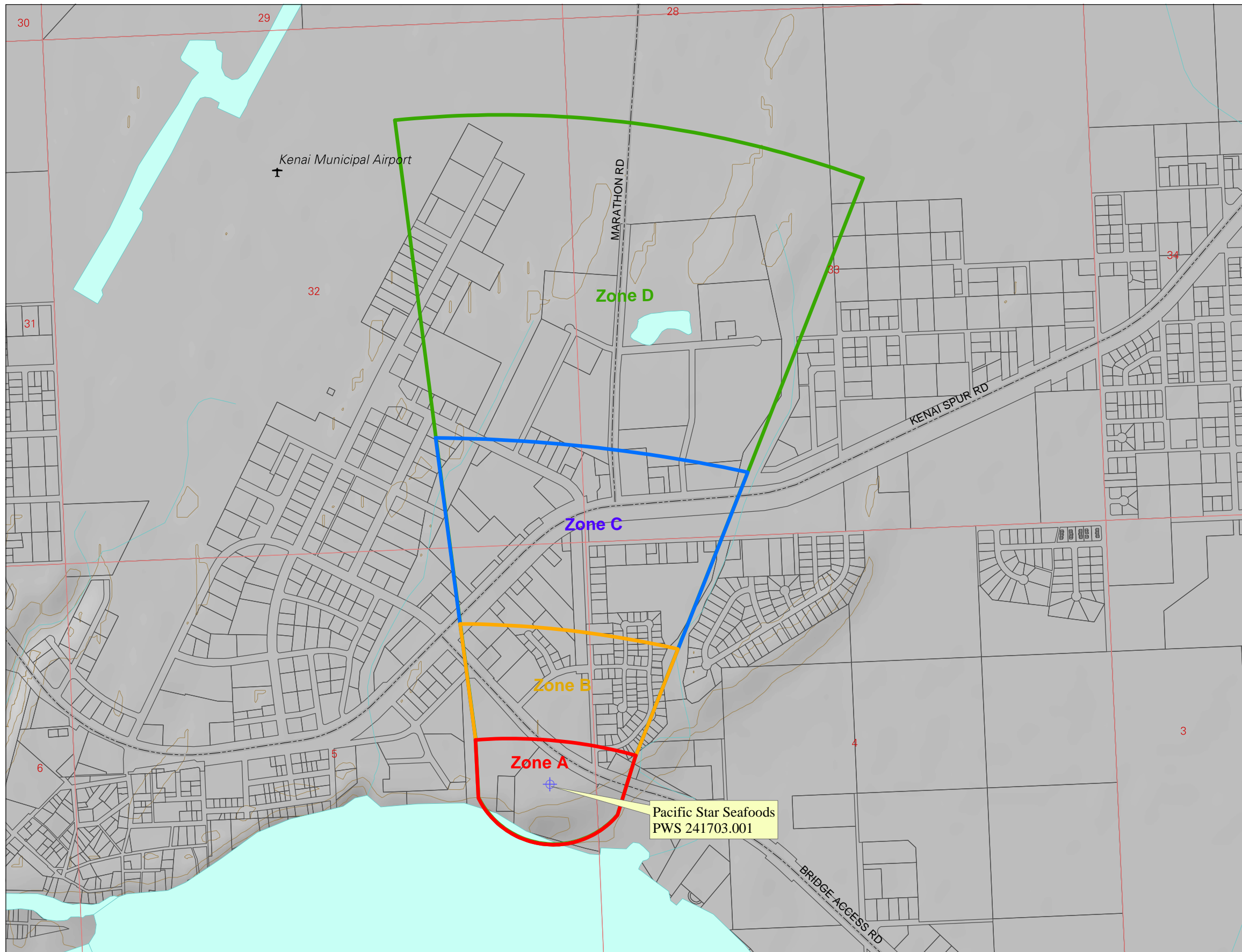
REFERENCES

- Alaska Department of Community and Economic Development (ADCED), 2002 [WWW document]. URL http://www.dced.state.ak.us/mra/CF_BLOCK.cfm.
- Alaska Department of Environmental Conservation, Contaminated Sites Database, 2003 [WWW database], URL http://www.state.ak.us/dec/dspar/csites/cs_search.htm
- Alaska Department of Environmental Conservation, Leaking Underground Storage Tank Database, 2003 [WWW database], URL http://www.dec.state.ak.us/spar/stp/ust/search/fac_search.asp
- Bailey, B.J., and Hogan, E.V., 1995 Overview of environmental and hydrogeologic conditions near Kenai, Alaska. U.S. Geological Survey Open-File Report 95-410, 18 p.
- Freethy, G.W., and Scully, D.R. 1980 Water Resources of the Cook Inlet Basin, Alaska. U.S. Geological Survey Hydrologic Investigation Atlas HA-620, prepared in cooperation with Alaska Water Study Committee, State of Alaska Department of Natural Resources, and Division of Geological and Geophysical Surveys.
- Freeze, R. A., and Cherry, J.A. 1979, Groundwater, Prentice-Hall, Englewood Cliffs, New Jersey
- Glass, Roy, L. 1996 Groundwater Conditions and Quality in the Western Part of the Kenai Peninsula, Southcentral Alaska. U.S. Geological Survey Open File Report 94-466, prepared in cooperation with the Alaska Department of Natural Resources, Kenai Peninsula Borough, and Kenai Soil and Water Conservation District.
- Hartman, D.C., Pessel, G.H., and McGee, D.I., 1972 Kenai Group of Cook Inlet Basin, Alaska: State of Alaska. Open File Report #49, Department of Natural Resources Division of Geological and Geophysical Surveys, 5p.
- Karlstrom, T.N.V. 1964 Quaternary geology of the Kenai Lowland and glacial history of the Cook Inlet region, Alaska. U.S. Geological Survey Professional Paper 443, 64 p.
- Kenai River Watershed, 2002 [WWW document]. URL http://www.kenai-watershed.org/spawning/kenai_river/kenai_river.html.
- Martin, G.C., Johnson, B.L., and Grant, 1915, Geology and mineral resources of Kenai Peninsula, Alaska: US Geological Survey Bulletin 587, 243 p., maps.
- United States Environmental Protection Agency (EPA), 2002 [WWW document]. URL <http://www.epa.gov/safewater/mcl.html>.

APPENDIX A

Pacific Star Seafoods Drinking Water Protection Area Location Map (Map 1)

Drinking Water Protection Areas for the Public Water Well System for PWS #241703.001 Pacific Star Seafoods



LEGEND

- Public Water System Well

Groundwater Protection Zones

- Zone A – Several Months Travel Time
- Zone B – Less Than 2 Years Travel Time
- Zone C – Less Than 5 Years Travel Time
- Zone D – Less Than 10 Years Travel Time

Hydrography/Physical

- Parcels
- Stream
- Lake or Pond
- Contours (50 ft.)

Transportation

- Roads

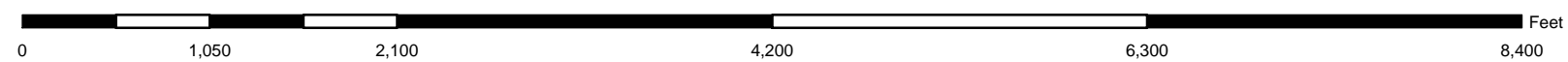
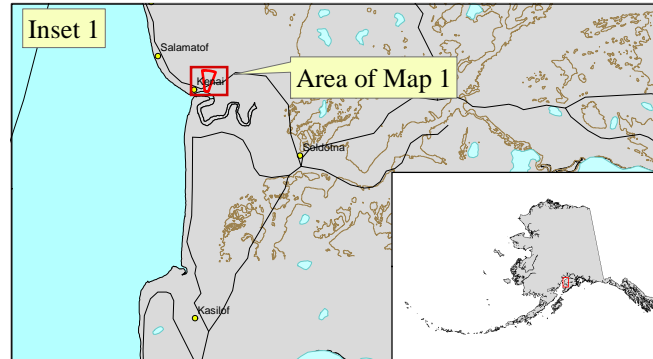
Data Sources:
 Contaminant Sources, Public Water System Wells, Contours
 Alaska Department of Environmental Conservation (ADEC)

Parcels
 Kenai Peninsula Borough

All other data
 United States Geological Survey (USGS)

Drinking Water Protection Areas based on ADEC
 Calculation Spreadsheet.

URS Corporation does not guarantee the accuracy or validity of the data provided.



APPENDIX B

Contaminant Source Inventory and Risk Ranking for Pacific Star Seafoods (Tables 1-4)

Table 1

**Contaminant Source Inventory for
Pacific Star Seafoods**

PWSID 241703.001

Contaminant Source Type	Contaminant Source ID	CS ID tag	Zone	Map Number	Comments
Construction trade areas and materials	C09	C09-01	A	1	
Injection wells (Class V) Industrial Process Water & Water Disposal Wells	D40	D40-01	A	1	
Injection wells (Class V) Industrial Process Water & Water Disposal Wells	D40	D40-02	A	1	
Injection wells (Class V) Industrial Process Water & Water Disposal Wells	D40	D40-03	A	1	
Seafood processing	N10	N10-01	A	1	
Seafood processing	N10	N10-02	A	1	
Seafood processing	N10	N10-03	A	1	
Residential Areas	R01	R01-01	A	1	1.05 residential acres located in Zone A
Closed tanks, heating oil, nonresidential (underground)	T17	T17-01	A	1	Pacific Star Seafoods Inc.
Contaminated sites, DEC recognized, non-Superfund, non-RCRA	U04	U04-01	A	1	Pacific Star Seafoods Inc.- extent of hydrocarbon contamination unknown - Closed - No File # - ADEC RECKEY: 1994230129901 http://www.dec.state.ak.us/spar/cs/cs_search.htm
Highways and roads, paved (cement or asphalt)	X20	X20-01	A	1	3 highways/roads located in Zone A
Construction trade areas and materials	C09	C09-02	B	1	Classic Mechanical Inc.
Gasoline stations (without repair shop)	C15	C15-01	B	1	Williams Express
Pharmacies (with on-site wastewater disposal)	C35	C35-01	B	1	Carrs Quality Center
Photography supplies/photo processing laboratories	C36	C36-01	B	1	Film Works
Domestic wastewater collection systems (sewer lines or lift stations)	D01	D10-01	B	1	29 collection systems located in Zone B
Residential Areas	R01	R01-02	B	1	11.74 residential acres located in Zone B
Tanks, diesel (underground)	T08	T08-01	B	1	Williams Express
Tanks, gasoline (underground)	T12	T12-01	B	1	Williams Express
Tanks, gasoline (underground)	T12	T12-02	B	1	Williams Express
Highways and roads, paved (cement or asphalt)	X20	X20-02	B	1	3 highways/roads located in Zone B
Body shops (automotive)	C05	C05-01	C	1	Kenai Chrysler Center Inc.

<i>Contaminant Source Type</i>	<i>Contaminant Source ID</i>	<i>CS ID tag</i>	<i>Zone</i>	<i>Map Number</i>	<i>Comments</i>
Bowling centers	C06	C06-01	C	1	
Florists	C12	C12-01	C	1	
Gasoline stations (without repair shop)	C15	C15-02	C	1	Tesoro Northstore #202
Heavy equipment rental/storage	C18	C18-01	C	1	
Motor /motor vehicle repair shops	C31	C31-01	C	1	K-Mart
Pharmacies (with on-site wastewater disposal)	C35	C35-02	C	1	K-Mart
Domestic wastewater collection systems (sewer lines or lift stations)	D01	D01-02	C	1	29 collection systems located in Zone C
Injection wells (Class V) Motor Vehicle Waste Disposal Well	D42	D42-01	C	1	Weaver Bros.
Residential Areas	R01	R01-03	C	1	7.69 residential acres located in Zone C
Tanks, gasoline (underground)	T12	T12-03	C	1	Tesoro Northstore #202
Tanks, gasoline (underground)	T12	T12-04	C	1	Tesoro Northstore #202
Closed Leaking Underground Fuel Storage Tank (LUST) Sites	U08	U08-01	C	1	Tesoro Northstore #202 - LUST Event Id 833/2539 - ADEC RECKEY: 1999230010901/1994230025401 http://www.dec.state.ak.us/spar/stp/ust/search/fac_search.asp
Closed Leaking Underground Fuel Storage Tank (LUST) Sites	U08	U08-02	C	1	Tesoro Northstore #202 - LUST Event Id 833/2539 - ADEC RECKEY: 1999230010901/1994230025401 http://www.dec.state.ak.us/spar/stp/ust/search/fac_search.asp
Highways and roads, paved (cement or asphalt)	X20	X20-03	C	1	9 highways/roads located in Zone C
Aircraft maintenance shops	C01	C01-01	D	1	
Body shops (automotive)	C05	C05-02	D	1	Protech Autobody and Detailing
Heavy equipment rental/storage	C18	C18-02	D	1	
Heavy equipment rental/storage	C18	C18-03	D	1	
Motor vehicle rental facilities - cars, trucks, ATV's, snow machines (with service department)	C30	C30-01	D	1	
Motor vehicle rental facilities - cars, trucks, ATV's, snow machines (with service department)	C30	C30-02	D	1	
Domestic wastewater collection systems (sewer lines or lift stations)	D01	D01-03	D	1	54 collection systems located in Zone D
Injection wells (Class V) Motor Vehicle Waste Disposal Well	D42	D42-02	D	1	Protech Auto Body and Detailing

<i>Contaminant Source Type</i>	<i>Contaminant Source ID</i>	<i>CS ID tag</i>	<i>Zone</i>	<i>Map Number</i>	<i>Comments</i>
Injection wells (Class V) Motor Vehicle Waste Disposal Well	D42	D42-03	D	1	Bill's Automotive
Injection wells (Class V) Motor Vehicle Waste Disposal Well	D42	D42-04	D	1	Alyeska Sales and Services
Machine and metal work shops	I23	I23-01	D	1	GLM Machine Shop
Tanks, diesel (underground)	T08	T08-02	D	1	Alyeska Sales and Services
Closed tanks, diesel (underground)	T09	T09-01	D	1	Automated Flight Services Station
Tanks, gasoline (underground)	T12	T12-05	D	1	Alyeska Sales and Services
Closed tanks, gasoline (underground)	T13	T13-01	D	1	Alyeska Sales and Services
Closed tanks, gasoline (underground)	T13	T13-02	D	1	Alyeska Sales and Services
Closed tanks, gasoline (underground)	T13	T13-03	D	1	Alyeska Sales and Services
Contaminated sites, DEC recognized, non-Superfund, non-RCRA	U04	U04-02	D	1	Halliburton Services - hydrochloric acid spill, extent unknown - Inactive - No File # - ADEC RECKEY: 1990230915501 http://www.dec.state.ak.us/spar/cs/cs_search.htm
Contaminated sites, DEC recognized, non-Superfund, non-RCRA	U04	U04-03	D	1	Halliburton Services - soil and groundwater hydrocarbon contamination- Inactive - No File # - ADEC RECKEY: 1990230915501 http://www.dec.state.ak.us/spar/cs/cs_search.htm
Closed Leaking Underground Fuel Storage Tank (LUST) Sites	U08	U08-03	D	1	Homer Electrical Association - LUST Event ID 541 - ADEC RECKEY: 1990230022703 http://www.dec.state.ak.us/spar/stp/ust/search/fac_search.asp
Highways and roads, paved (cement or asphalt)	X20	X20-04	D	1	1 highway/road located in Zone D

Table 2

*Contaminant Source Inventory and Risk Ranking for
Pacific Star Seafoods
Sources of Bacteria and Viruses*

PWSID 241703.001

<i>Contaminant Source Type</i>	<i>Contaminant Source ID</i>	<i>CS ID tag</i>	<i>Zone</i>	<i>Risk Ranking for Analysis</i>	<i>Map Number</i>	<i>Comments</i>
Injection wells (Class V) Industrial Process Water & Water Disposal Wells	D40	D40-01	A	High	1	
Injection wells (Class V) Industrial Process Water & Water Disposal Wells	D40	D40-02	A	High	1	
Injection wells (Class V) Industrial Process Water & Water Disposal Wells	D40	D40-03	A	High	1	
Seafood processing	N10	N10-01	A	Medium	1	
Seafood processing	N10	N10-02	A	Medium	1	
Seafood processing	N10	N10-03	A	Medium	1	
Residential Areas	R01	R01-01	A	Low	1	1.05 residential acres located in Zone A
Highways and roads, paved (cement or asphalt)	X20	X20-01	A	Low	1	3 highways/roads located in Zone A
Pharmacies (with on-site wastewater disposal)	C35	C35-01	B	Low	1	Carrs Quality Center
Domestic wastewater collection systems (sewer lines or lift stations)	D01	D10-01	B	Medium	1	29 collection systems located in Zone B
Residential Areas	R01	R01-02	B	Low	1	11.74 residential acres located in Zone B
Highways and roads, paved (cement or asphalt)	X20	X20-02	B	Low	1	3 highways/roads located in Zone B
Pharmacies (with on-site wastewater disposal)	C35	C35-02	C	Low	1	K-Mart

Table 3

*Contaminant Source Inventory and Risk Ranking for
Pacific Star Seafoods
Sources of Nitrates/Nitrites*

PWSID 241703.001

<i>Contaminant Source Type</i>	<i>Contaminant Source ID</i>	<i>CS ID tag</i>	<i>Zone</i>	<i>Risk Ranking for Analysis</i>	<i>Map Number</i>	<i>Comments</i>
Injection wells (Class V) Industrial Process Water & Water Disposal Wells	D40	D40-01	A	High	1	
Injection wells (Class V) Industrial Process Water & Water Disposal Wells	D40	D40-02	A	High	1	
Injection wells (Class V) Industrial Process Water & Water Disposal Wells	D40	D40-03	A	High	1	
Seafood processing	N10	N10-01	A	Low	1	
Seafood processing	N10	N10-02	A	Low	1	
Seafood processing	N10	N10-03	A	Low	1	
Residential Areas	R01	R01-01	A	Low	1	1.05 residential acres located in Zone A
Highways and roads, paved (cement or asphalt)	X20	X20-01	A	Low	1	3 highways/roads located in Zone A
Pharmacies (with on-site wastewater disposal)	C35	C35-01	B	Low	1	Carrs Quality Center
Domestic wastewater collection systems (sewer lines or lift stations)	D01	D10-01	B	Medium	1	29 collection systems located in Zone B
Residential Areas	R01	R01-02	B	Low	1	11.74 residential acres located in Zone B
Highways and roads, paved (cement or asphalt)	X20	X20-02	B	Low	1	3 highways/roads located in Zone B
Florists	C12	C12-01	C	Low	1	
Domestic wastewater collection systems (sewer lines or lift stations)	D01	D01-02	C	Medium	1	29 collection systems located in Zone C
Residential Areas	R01	R01-03	C	Low	1	7.69 residential acres located in Zone C
Highways and roads, paved (cement or asphalt)	X20	X20-03	C	Low	1	9 highways/roads located in Zone C

Table 4

*Contaminant Source Inventory and Risk Ranking for
Pacific Star Seafoods
Sources of Volatile Organic Chemicals*

PWSID 241703.001

<i>Contaminant Source Type</i>	<i>Contaminant Source ID</i>	<i>CS ID tag</i>	<i>Zone</i>	<i>Risk Ranking for Analysis</i>	<i>Map Number</i>	<i>Comments</i>
Construction trade areas and materials	C09	C09-01	A	Low	1	
Injection wells (Class V) Industrial Process Water & Water Disposal Wells	D40	D40-01	A	High	1	
Injection wells (Class V) Industrial Process Water & Water Disposal Wells	D40	D40-02	A	High	1	
Injection wells (Class V) Industrial Process Water & Water Disposal Wells	D40	D40-03	A	High	1	
Residential Areas	R01	R01-01	A	Low	1	1.05 residential acres located in Zone A
Closed tanks, heating oil, nonresidential (underground)	T17	T17-01	A	Medium	1	Pacific Star Seafoods Inc.
Contaminated sites, DEC recognized, non-Superfund, non-RCRA	U04	U04-01	A	High	1	Pacific Star Seafoods Inc.- extent of hydrocarbon contamination unknown - Closed - No File # - ADEC RECKEY: 1994230129901 http://www.dec.state.ak.us/spar/cs/cs_search.htm
Highways and roads, paved (cement or asphalt)	X20	X20-01	A	Low	1	3 highways/roads located in Zone A
Construction trade areas and materials	C09	C09-02	B	Low	1	Classic Mechanical Inc.
Gasoline stations (without repair shop)	C15	C15-01	B	High	1	Williams Express
Photography supplies/photo processing laboratories	C36	C36-01	B	Medium	1	Film Works
Domestic wastewater collection systems (sewer lines or lift stations)	D01	D10-01	B	Low	1	29 collection systems located in Zone B
Residential Areas	R01	R01-02	B	Low	1	11.74 residential acres located in Zone B
Tanks, diesel (underground)	T08	T08-01	B	High	1	Williams Express
Tanks, gasoline (underground)	T12	T12-01	B	High	1	Williams Express
Tanks, gasoline (underground)	T12	T12-02	B	High	1	Williams Express
Highways and roads, paved (cement or asphalt)	X20	X20-02	B	Low	1	3 highways/roads located in Zone B
Body shops (automotive)	C05	C05-01	C	Medium	1	Kenai Chrysler Center Inc.
Bowling centers	C06	C06-01	C	Low	1	
Gasoline stations (without repair shop)	C15	C15-02	C	High	1	Tesoro Northstore #202
Heavy equipment rental/storage	C18	C18-01	C	Medium	1	

Table 4 (continued)

*Contaminant Source Inventory and Risk Ranking for
Pacific Star Seafoods
Sources of Volatile Organic Chemicals*

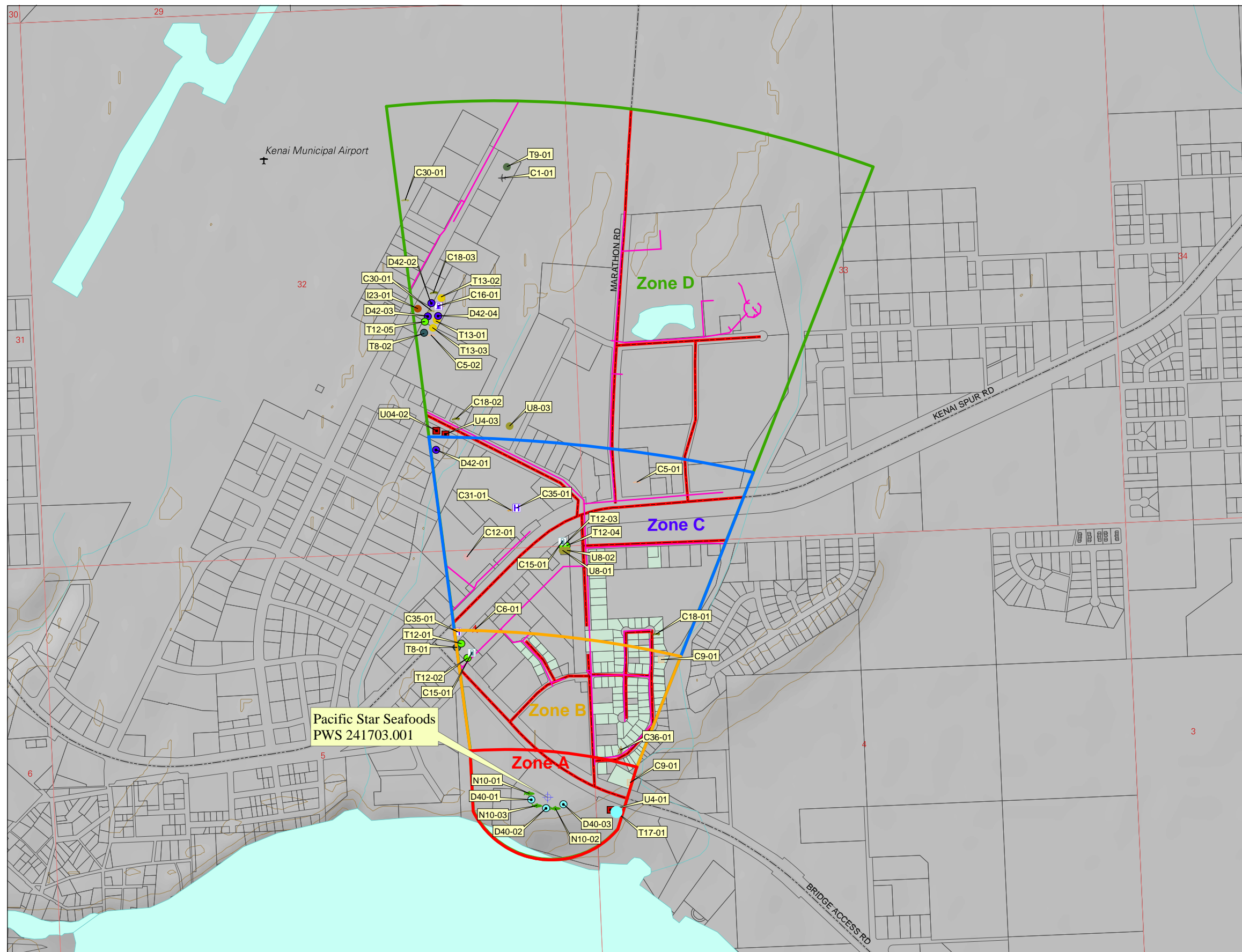
PWSID 241703.001

<i>Contaminant Source Type</i>	<i>Contaminant Source ID</i>	<i>CS ID tag</i>	<i>Zone</i>	<i>Risk Ranking for Analysis</i>	<i>Map Number</i>	<i>Comments</i>
Motor /motor vehicle repair shops	C31	C31-01	C	Medium	1	K-Mart
Domestic wastewater collection systems (sewer lines or lift stations)	D01	D01-02	C	Low	1	29 collection systems located in Zone C
Injection wells (Class V) Motor Vehicle Waste Disposal Well	D42	D42-01	C	High	1	Weaver Bros.
Residential Areas	R01	R01-03	C	Low	1	7.69 residential acres located in Zone C
Tanks, gasoline (underground)	T12	T12-03	C	High	1	Tesoro Northstore #202
Tanks, gasoline (underground)	T12	T12-04	C	High	1	Tesoro Northstore #202
Highways and roads, paved (cement or asphalt)	X20	X20-03	C	Low	1	9 highways/roads located in Zone C
Injection wells (Class V) Motor Vehicle Waste Disposal Well	D42	D42-02	D	High	1	Protech Auto Body and Detailing
Injection wells (Class V) Motor Vehicle Waste Disposal Well	D42	D42-03	D	High	1	Bill's Automotive
Injection wells (Class V) Motor Vehicle Waste Disposal Well	D42	D42-04	D	High	1	Alyeska Sales and Services
Machine and metal work shops	I23	I23-01	D	High	1	GLM Machine Shop
Tanks, diesel (underground)	T08	T08-02	D	High	1	Alyeska Sales and Services
Tanks, gasoline (underground)	T12	T12-05	D	High	1	Alyeska Sales and Services
Contaminated sites, DEC recognized, non-Superfund, non-RCRA	U04	U04-03	D	High	1	Halliburton Services - soil and groundwater hydrocarbon contamination- Inactive - No File # - ADEC RECKEY: 1990230915501 http://www.dec.state.ak.us/spar/cs/cs_search.htm

APPENDIX C

Pacific Star Seafoods Drinking Water Protection Area and Potential and Existing Contaminant Sources (Map 1)

Drinking Water Protection Areas for the Public Water Well System for PWS #241703.001 Pacific Star Seafoods Showing Potential and Existing Sources of Contamination



LEGEND

- Public Water System Well

- Groundwater Protection Zones**
- Zone A – Several Months Travel Time
- Zone B – Less Than 2 Years Travel Time
- Zone C – Less Than 5 Years Travel Time
- Zone D – Less Than 10 Years Travel Time

- Contaminant Sources**
- Aircraft Maintenance Shops (C1)
- Body Shops (Automotive) (C5)
- Bowling Centers (C6)
- Construction Trade areas and materials (C9)
- Gasoline Stations (without repair shop) (C15)
- Gasoline Stations (with repair shop) (C16)
- Heavy Equipment rental/storage (C18)
- Motor vehicle rental facilities (with service department) (C30)
- Motor vehicle repair shops (C31)
- Pharmacies (with on-site wastewater) (C35)
- Photography supplies/processing (C36)
- Injection Wells (Class V) Industrial Process Water & Water Disposal Wells (D40)
- Injection wells (Class V) Motor Vehicle Waste Disposal Well (D42)
- Machine and metal work shops (I-23)
- Fish Processing (N10)
- Tanks, Diesel (Underground) (T8)
- Closed Tanks, Diesel (Underground) (T9)
- Tanks, Gasoline (Underground) (T12)
- Closed Tanks, Gasoline (Underground) (T13)
- Closed Tanks, Heating Oil, Non-Residential (Underground) (T17)
- Contaminated Sites, DEC Recognized, non-Superfund, non-RCRA (U04)
- Closed Leaking Underground Fuel Storage Tank (LUST) lubricants or other Petroleum Products (U08)
- Sewers (D1)
- Highways and roads, paved (X20)
- Residential Areas (R1)

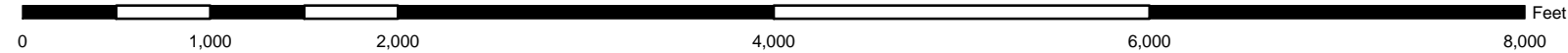
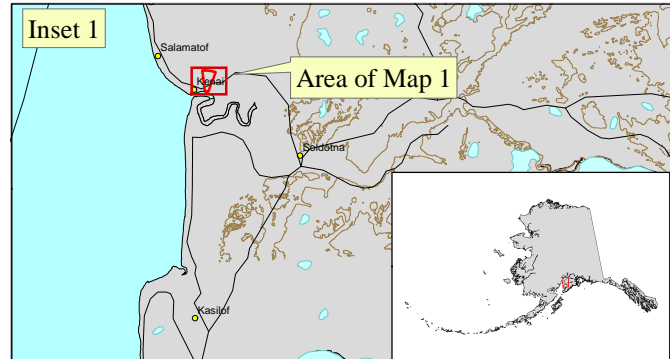
Data Sources:
 Contaminant Sources, Public Water System Wells, Contours
 Alaska Department of Environmental Conservation (ADEC)

Parcels
 Kenai Peninsula Borough

All other data
 United States Geological Survey (USGS)

Drinking Water Protection Areas based on ADEC
 Calculation Spreadsheet.

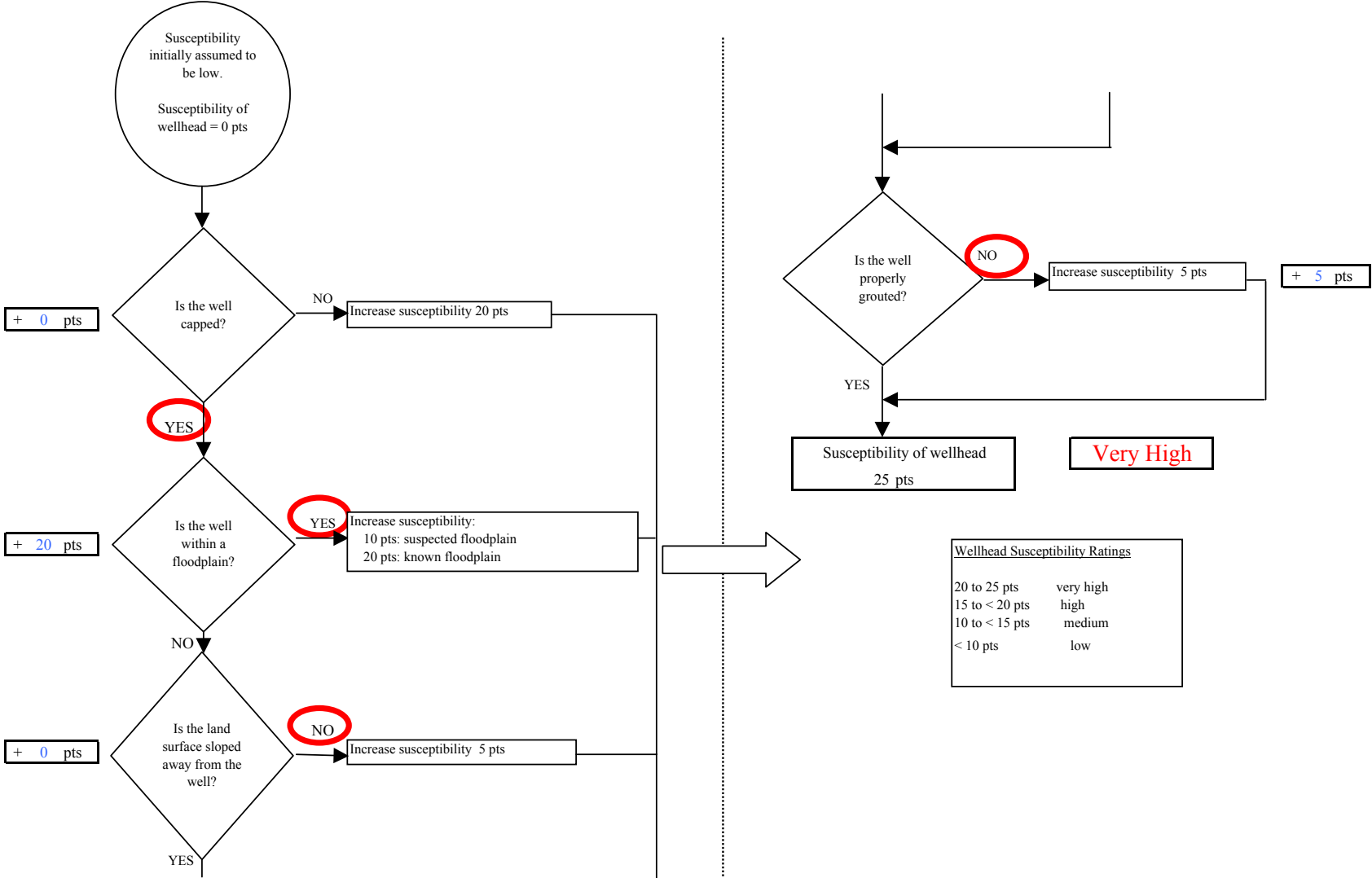
URS Corporation does not guarantee the accuracy or validity of the data provided.



APPENDIX D

Vulnerability Analysis for Pacific Star Seafoods Public Drinking Water Source (Charts 1-8)

Chart 1. Susceptibility of the wellhead - Pacific Star Seafoods (241703.001)



Wellhead Susceptibility Ratings	
20 to 25 pts	very high
15 to < 20 pts	high
10 to < 15 pts	medium
< 10 pts	low

Chart 2. Susceptibility of the aquifer - Pacific Star Seafoods (241703.001)

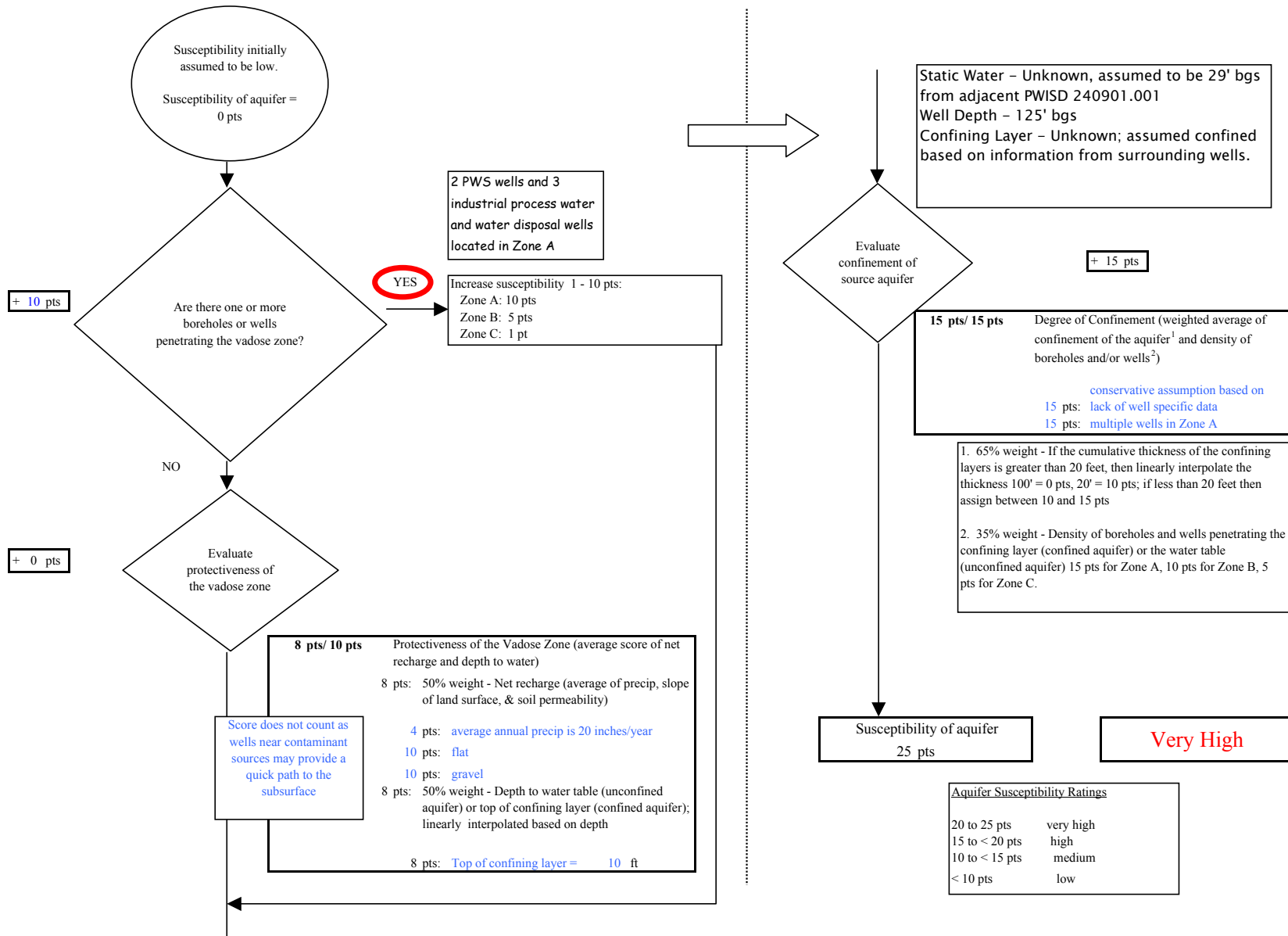


Chart 3. Contaminant risks for Pacific Star Seafoods (241703.001) - Bacteria & Viruses

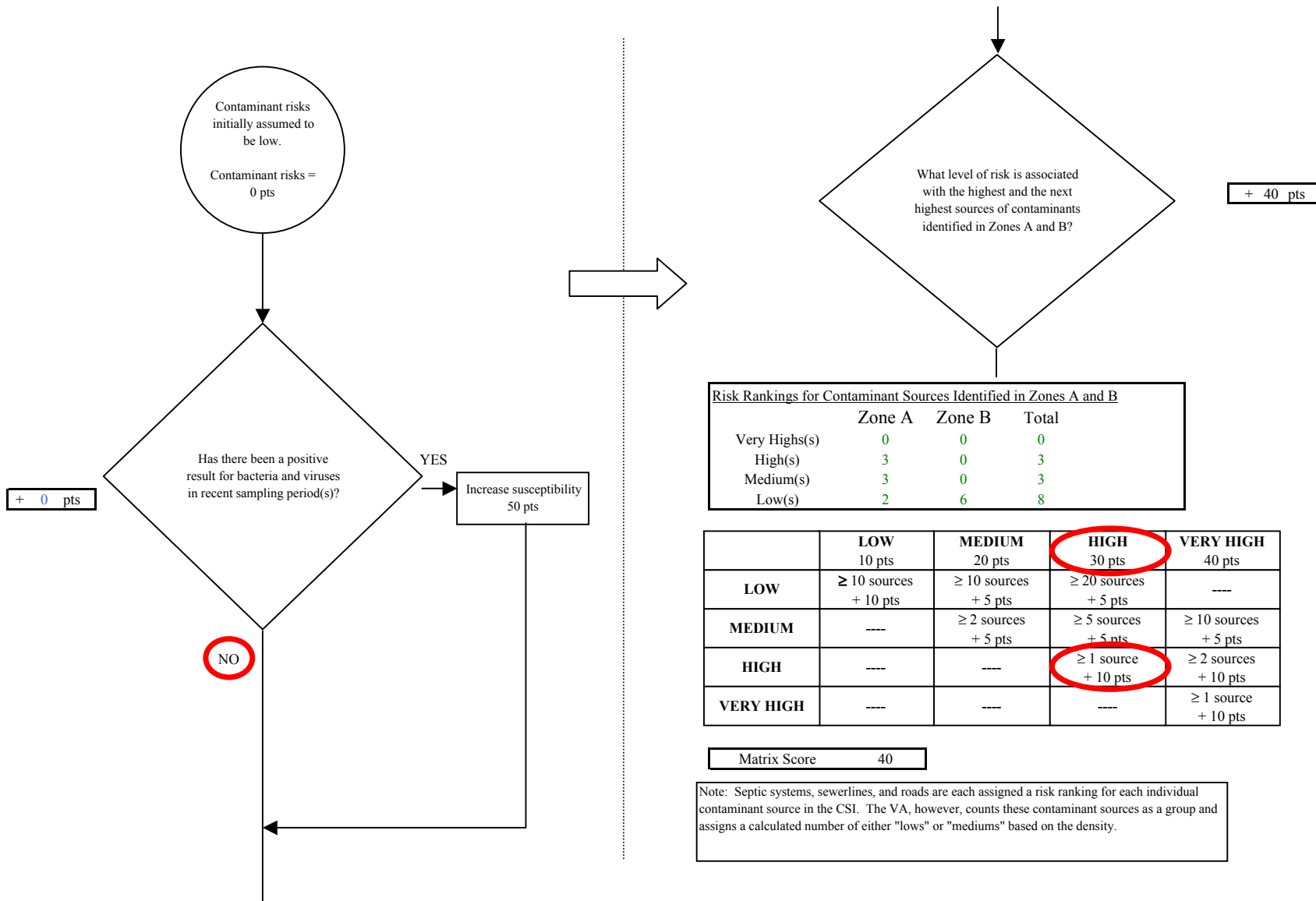


Chart 3. Contaminant risks for Pacific Star Seafoods (241703.001) - Bacteria & Viruses

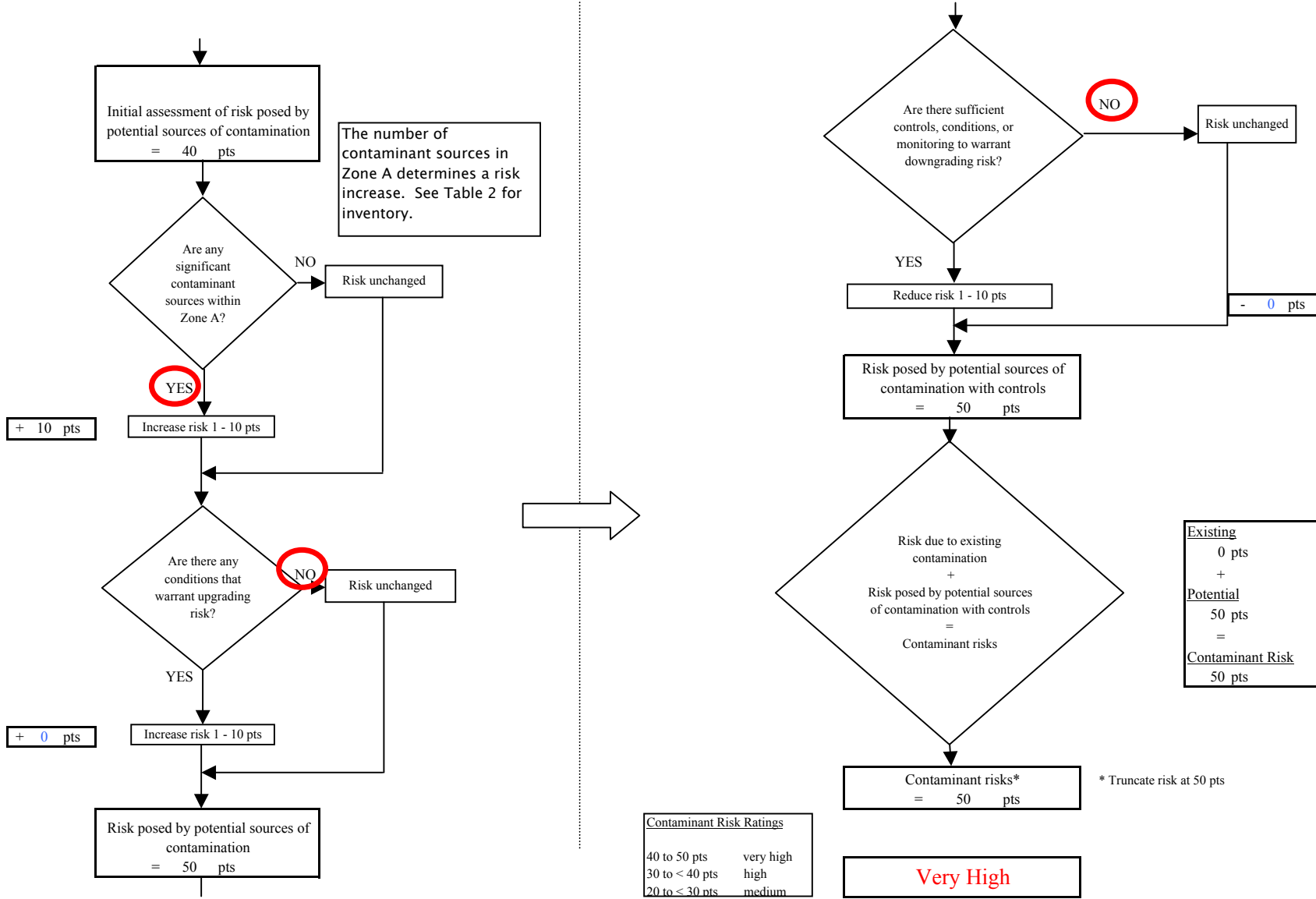


Chart 4. Vulnerability analysis for Pacific Star Seafoods (241703.001) - Bacteria & Viruses

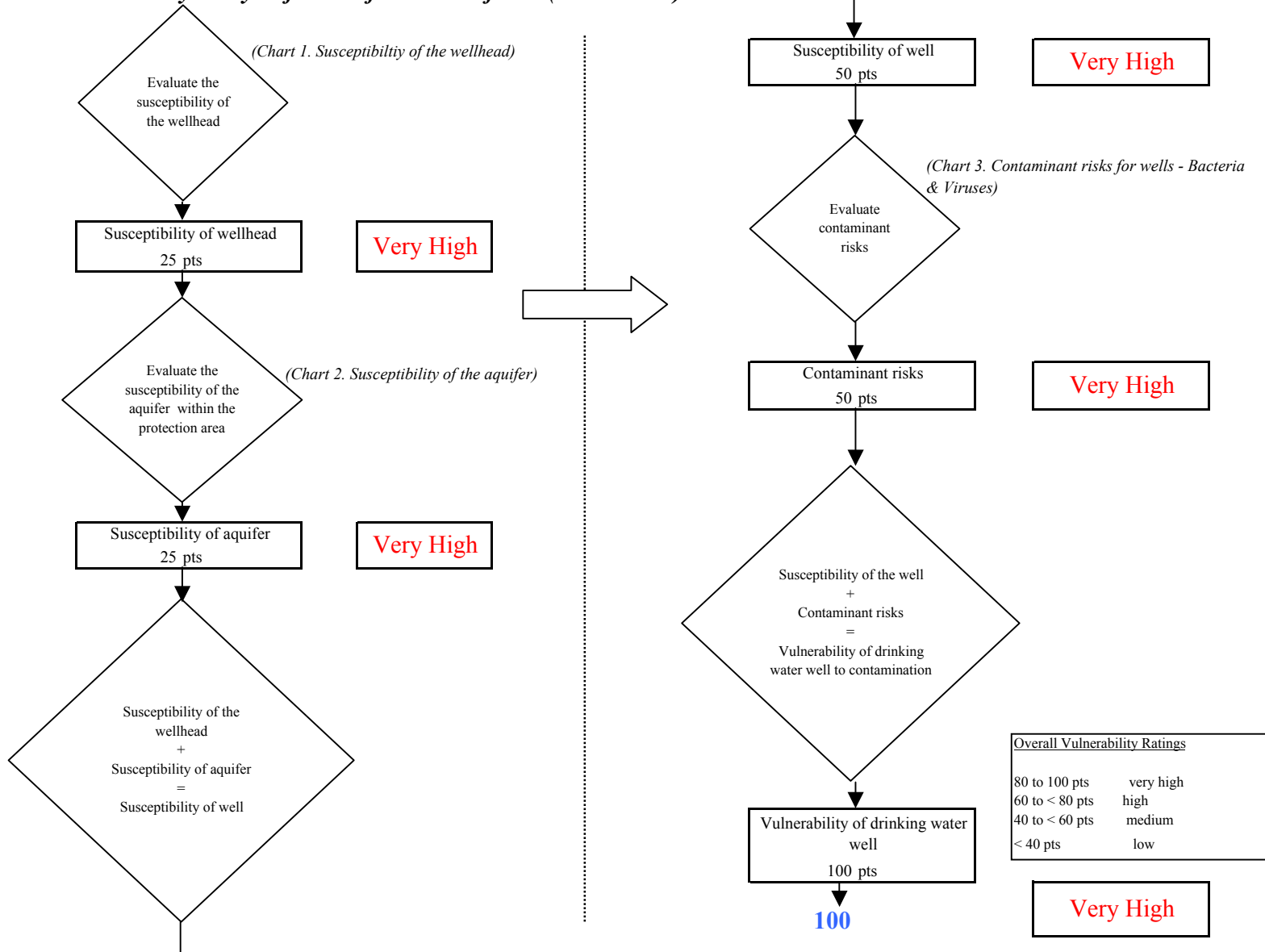


Chart 5. Contaminant risks for Pacific Star Seafoods (241703.001) - Nitrates and Nitrites

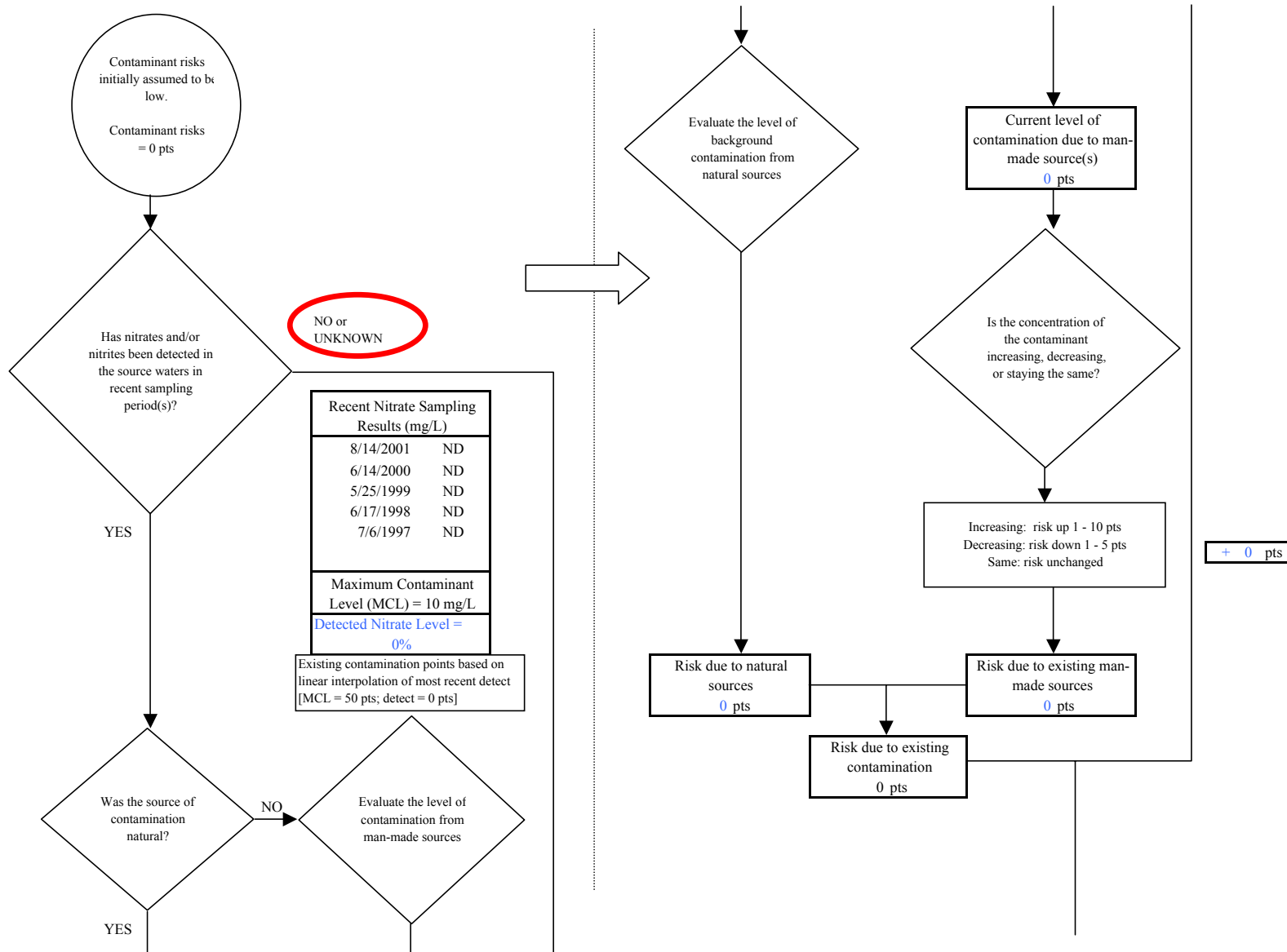


Chart 5. Contaminant risks for Pacific Star Seafoods (241703.001) - Nitrates and Nitrites

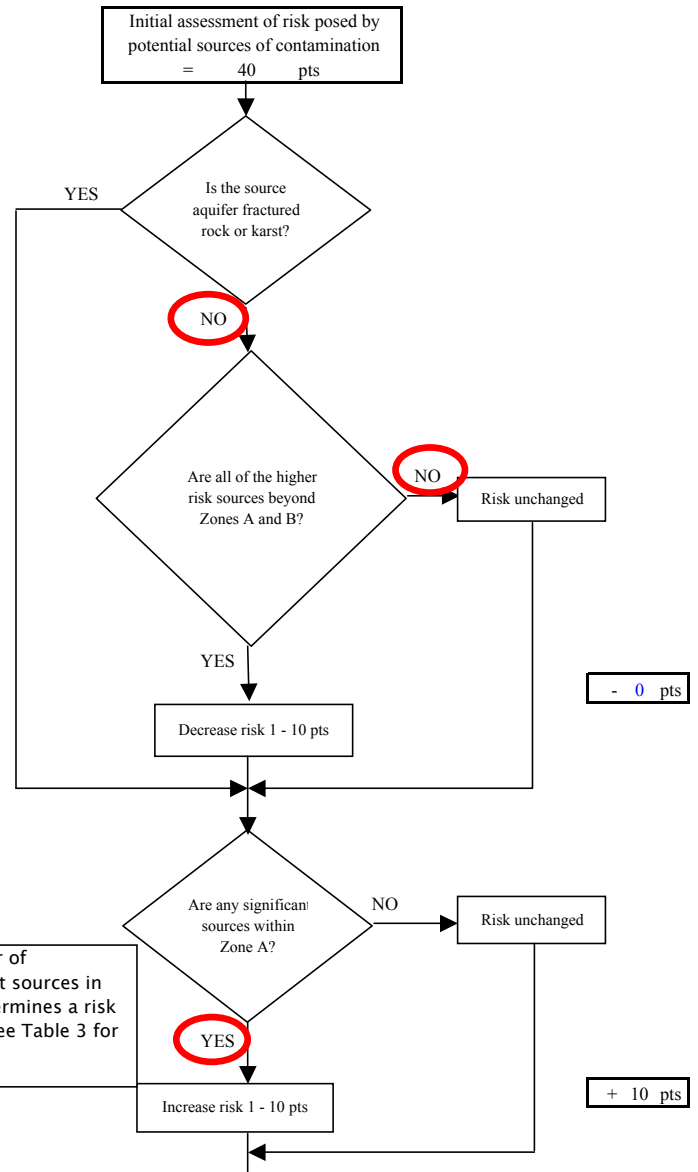
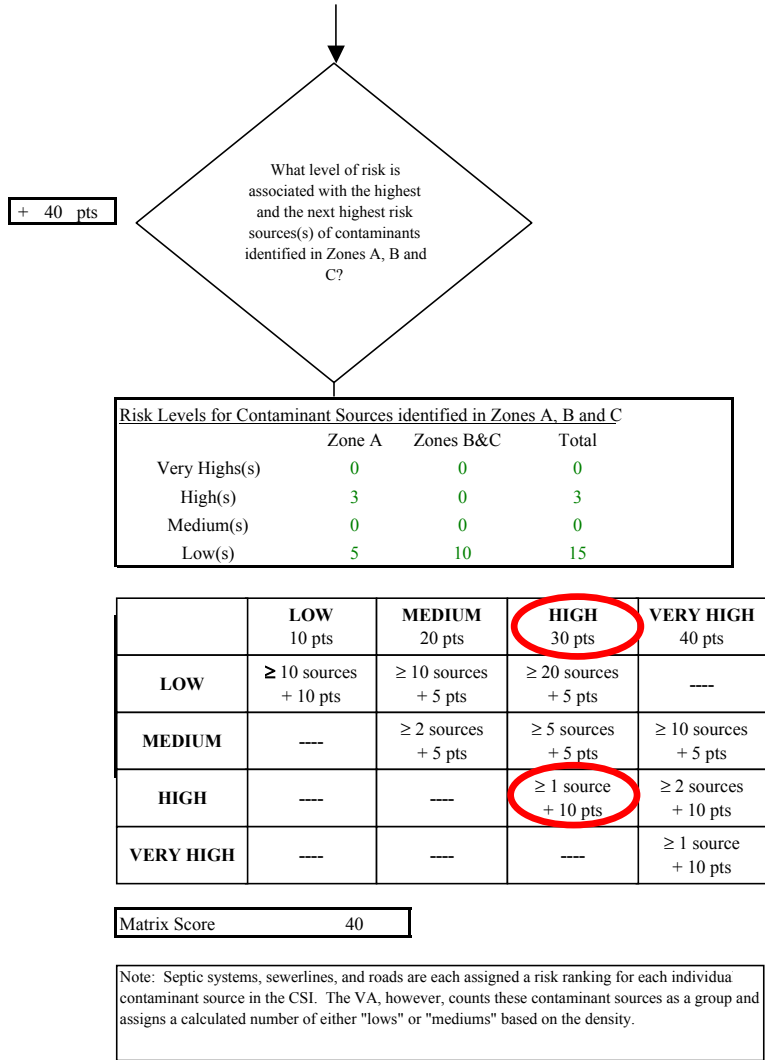


Chart 5. Contaminant risks for Pacific Star Seafoods (241703.001) - Nitrates and Nitrites

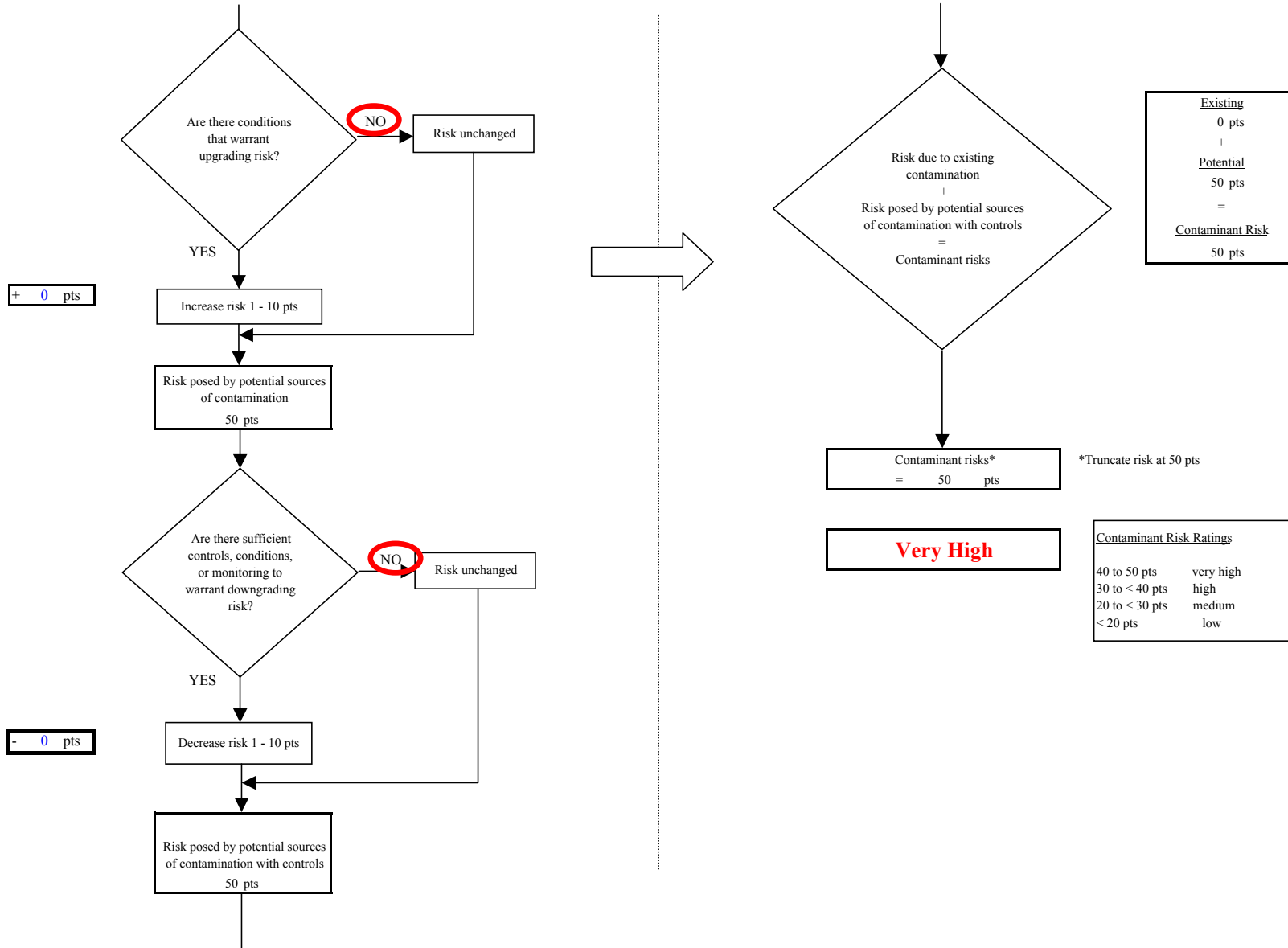


Chart 6. Vulnerability analysis for Pacific Star Seafoods (241703.001) - Nitrates and Nitrites

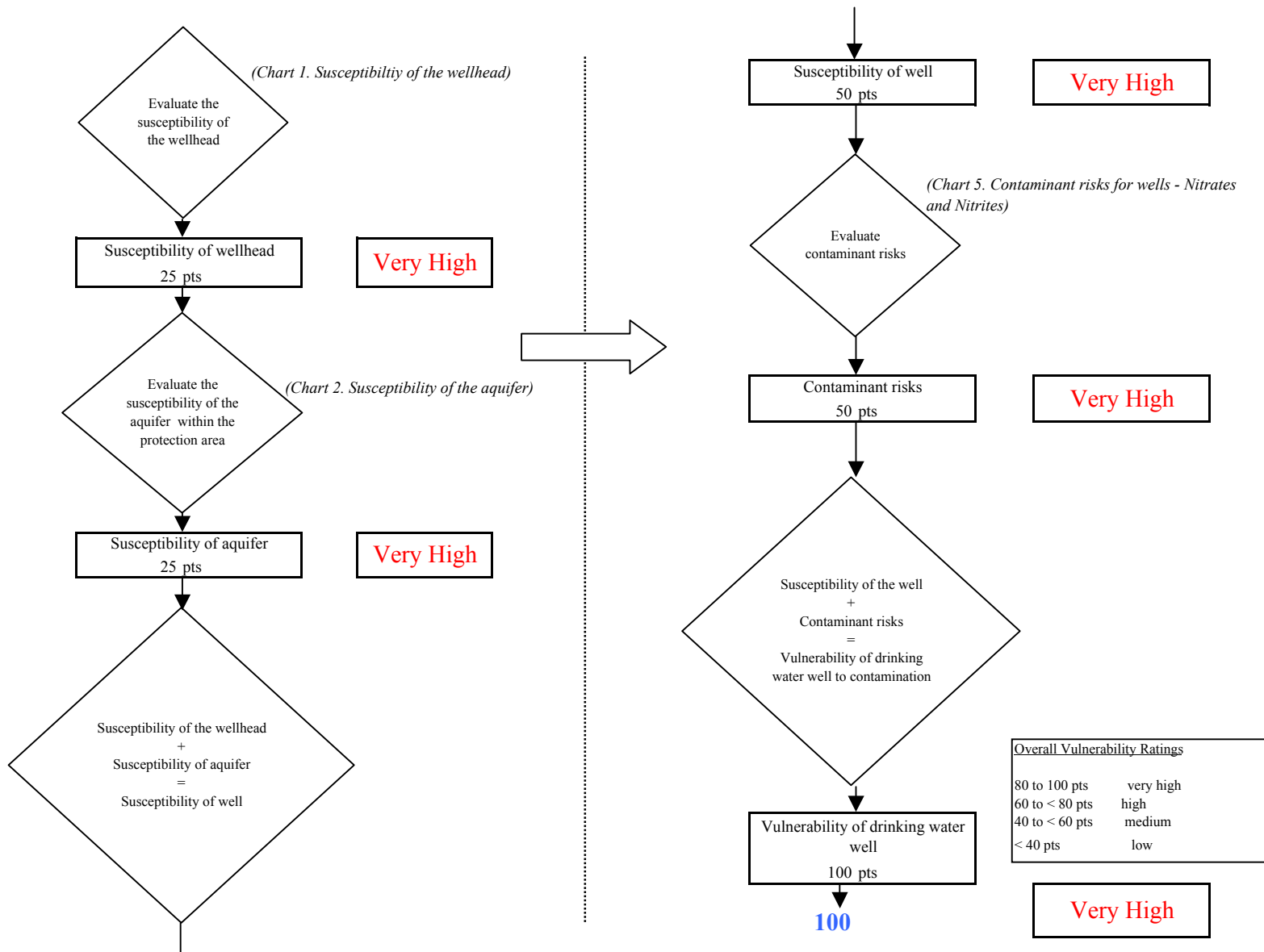


Chart 7. Contaminant risks for Pacific Star Seafoods (241703.001) - Volatile Organic Chemicals

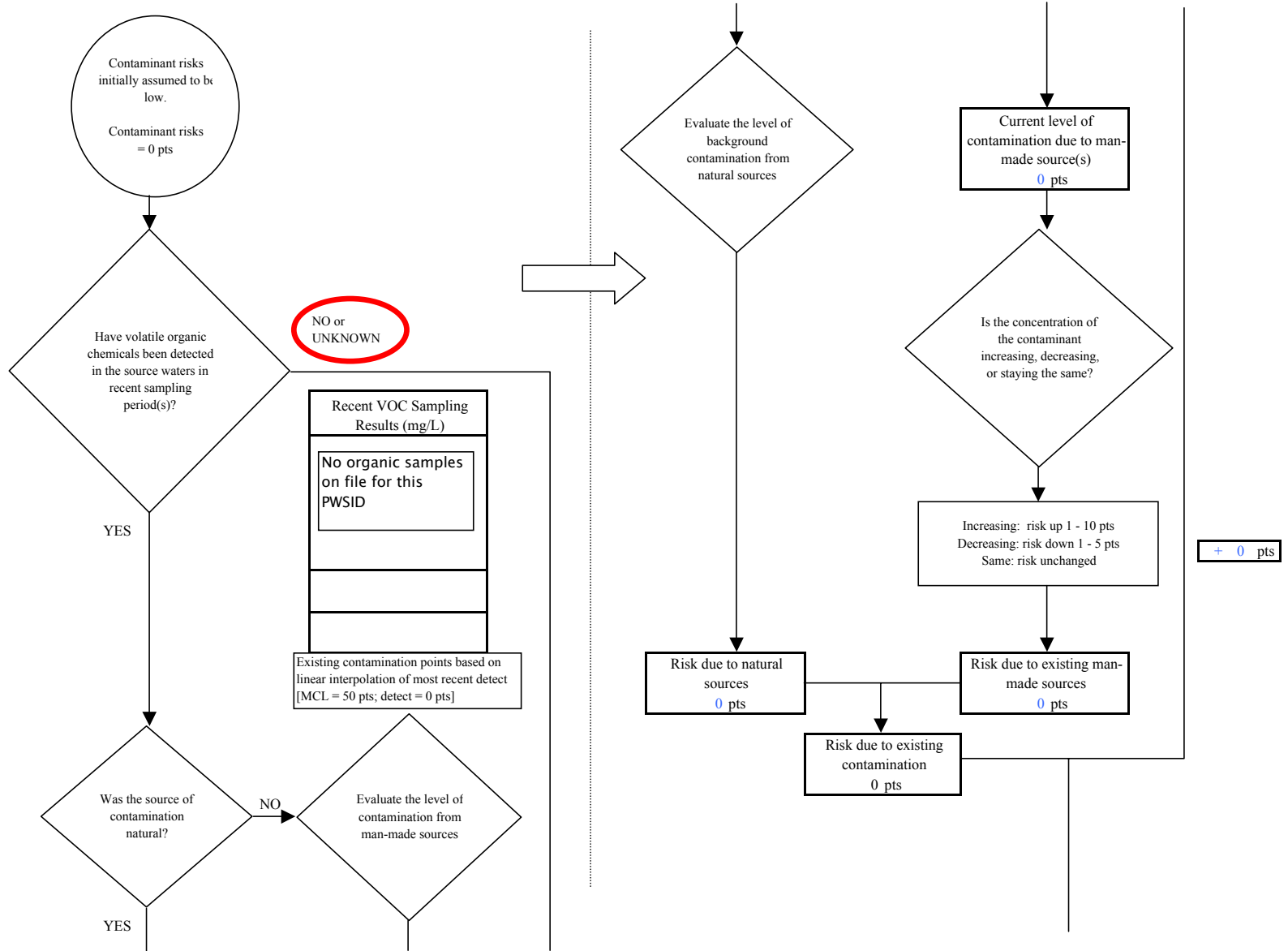


Chart 7. Contaminant risks for Pacific Star Seafoods (241703.001) - Volatile Organic Chemicals

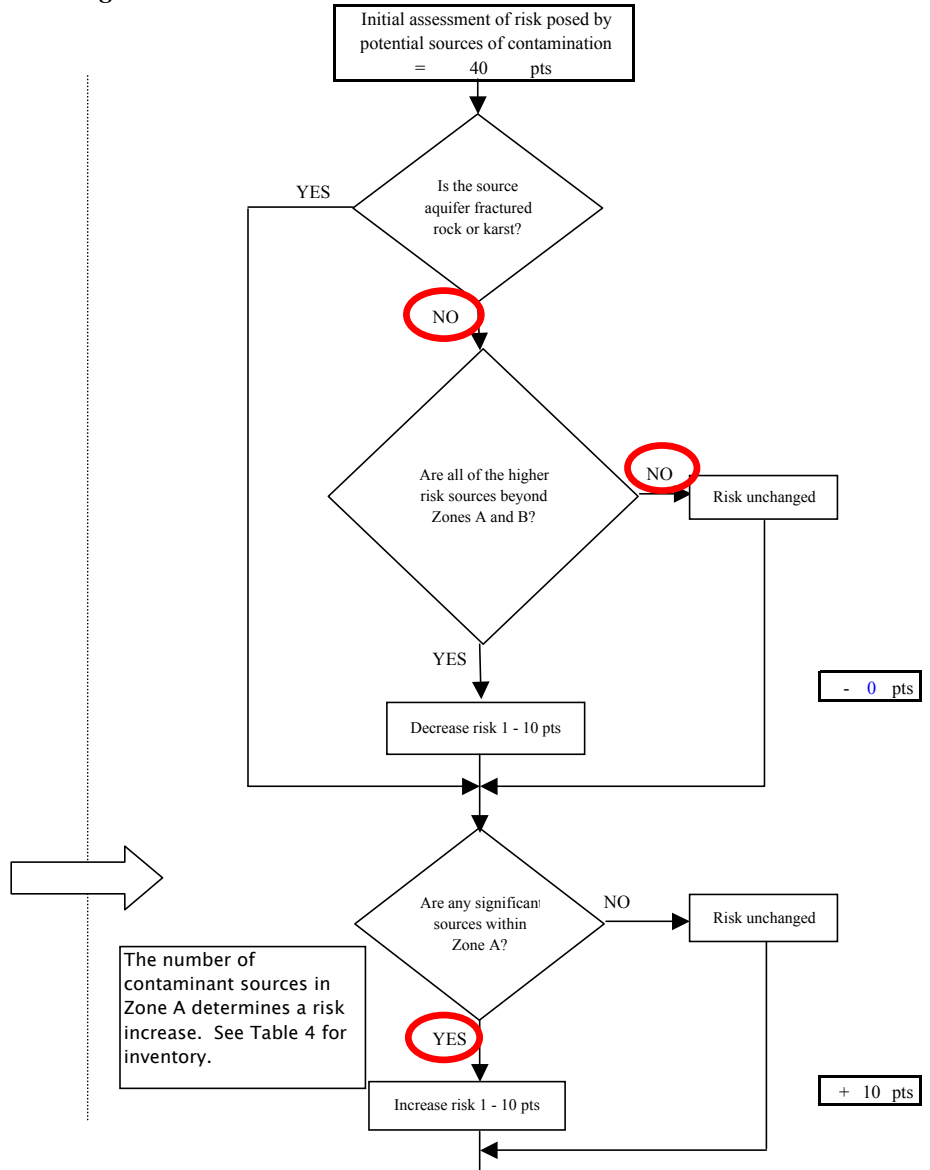
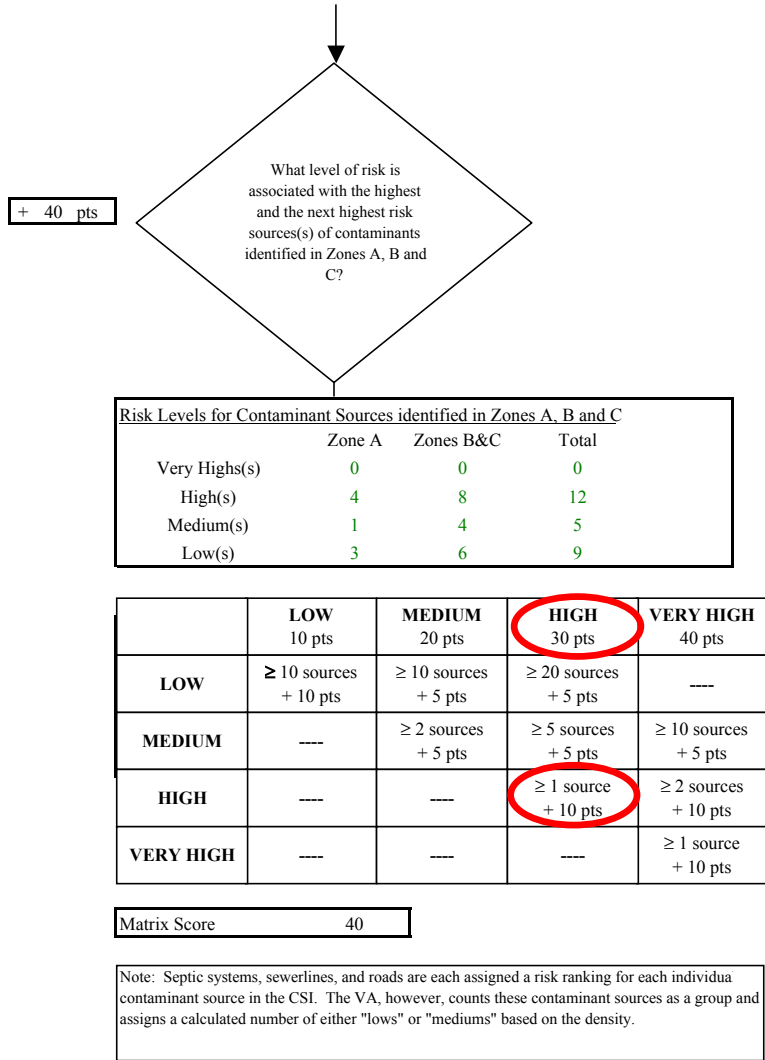


Chart 7. Contaminant risks for Pacific Star Seafoods (241703.001) - Volatile Organic Chemicals

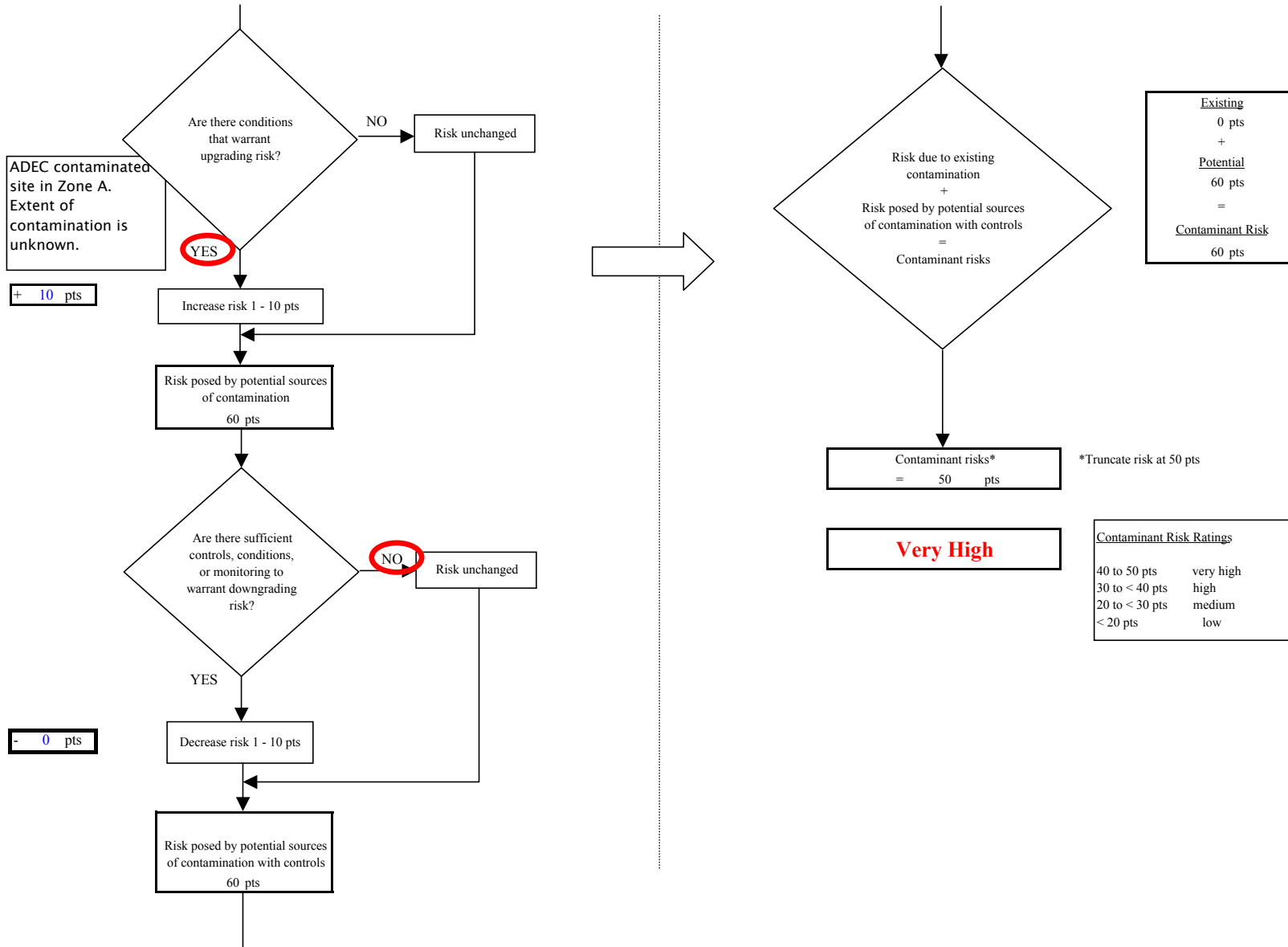


Chart 8. Vulnerability analysis for Pacific Star Seafoods (241703.001) - Volatile Organic Chemicals

