



Source Water Assessment

A Hydrogeologic Susceptibility and
Vulnerability Assessment for
Elite Health and Fitness
Public Drinking Water System,
Kenai, Alaska
PWSID # 245626.001

DRINKING WATER PROTECTION REPORT 1709

Alaska Department of Environmental Conservation

January, 2009

Source Water Assessment for
Elite Health and Fitness
Public Drinking Water System,
Kenai, Alaska
PWSID# 245626.001

DRINKING WATER PROTECTION REPORT 1709

The Drinking Water Protection (DWP) section of the Drinking Water Program is producing Source Water Assessments in compliance with the Safe Drinking Water Act Amendments of 1996. Each assessment includes a delineation of the source water area, an inventory of potential and existing contaminant sources that may impact the water, a risk ranking for each of these contaminants, and an evaluation of the potential vulnerability of these drinking water sources.

These assessments are intended to provide public water systems owners/operators, communities, and local governments with the best available information that may be used to protect the quality of their drinking water. The assessments combine information obtained from various sources, including the U.S. Environmental Protection Agency, Alaska Department of Environmental Conservation (DEC), public water system owners/operators, and other public information sources. The results of this assessment are subject to change if additional data becomes available. It is anticipated this assessment will be updated every five years to reflect any changes in the vulnerability and/or susceptibility of public drinking water source. If you have any additional information that may affect the results of this assessment, please contact the DWP staff at the following toll-free number 1-866-956-7656.

January, 2009

CONTENTS

	Page		Page
Executive Summary.....	1	Ranking of Contaminant Risks	2
Elite Health and Fitness Public Drinking Water System	1	Vulnerability of Elite Health and Fitness Drinking Water System.....	3
Elite Health and Fitness Drinking Water Protection Area.....	2	References.....	5
Inventory of Potential and Existing Contaminant Sources.....	2	Appendix A	6
		Appendix B	8
		Appendix C	10

TABLES

Table 1. Definition of Zones.....	2
Table 2. Susceptibility	3
Table 3. Contaminant Risks.....	3
Table 4. Overall Vulnerability.....	4

APPENDICES

- APPENDIX
- A. Elite Health and Fitness Drinking Water Protection Area (Map A)
 - B. Contaminant Source Inventory for Elite Health and Fitness (Table 1)
 - Contaminant Source Inventory and Risk Ranking for Elite Health and Fitness – Bacteria and Viruses (Table 2)
 - Contaminant Source Inventory and Risk Ranking for Elite Health and Fitness – Nitrates/Nitrites (Table 3)
 - Contaminant Source Inventory and Risk Ranking for Elite Health and Fitness – Volatile Organic Chemicals (Table 4)
 - C. Elite Health and Fitness Drinking Water Protection Area and Potential and Existing Contaminant Sources (Map C)

Source Water Assessment for Elite Health and Fitness Source of Public Drinking Water, Kenai, Alaska

Drinking Water Protection Alaska Department of Environmental Conservation

EXECUTIVE SUMMARY

The public water system for Elite Health and Fitness is a Class B (transient/non-community) water system consisting of one well and is located on Kenai Spur Highway in Kenai, Alaska. The wellhead received a susceptibility rating of **Low** and the aquifer received a susceptibility rating of **Medium**. Combining these two ratings produces a **Low** rating for the natural susceptibility of the well. Identified potential and existing sources of contaminants for Elite Health and Fitness public drinking water source include: coal mining (active or inactive), septic systems, residential heating oil tanks, and roads. These identified potential and existing sources of contamination are considered as sources of bacteria and viruses, nitrates and/or nitrites, and volatile organic chemicals. Overall, the public water sources for Elite Health and Fitness received a vulnerability rating of **Low** for bacteria and viruses, **Low** for nitrates and nitrites, and **High** for volatile organic chemicals. This assessment of contaminant risks can be used as a foundation for local voluntary protection efforts as well as a basis for the continuous efforts on the part of Elite Health and Fitness to protect public health.

ELITE HEALTH AND FITNESS PUBLIC DRINKING WATER SYSTEM

The Elite Health and Fitness public water system is a Class B (transient/non-community) water system. The system consists of one well and is located on Kenai Spur Highway in Kenai, Alaska (see Map A in Appendix A). The City of Kenai (population 6,975) is located along the western edge of the Kenai Peninsula, at the mouth of the Kenai River. It lies within the Kenai Peninsula Borough, which has a population of approximately 50,000 and encompasses an area of more than 25,600 square miles (KPB, 2008).

The area receives 20 inches of precipitation annually, and average temperatures range from 4 to 22 degrees Fahrenheit in the winter and from 45 to 65 degrees Fahrenheit in the summer (ADCCED, 2009).

Approximately 75% of the homes in the City of Kenai receive piped water from one of three municipal wells, and are connected to a sewer system. Sewage receives secondary treatment. The remaining households use individual water wells and septic systems. Natural gas

is supplied to the area by Enstar while electricity is provided by both Chugach Electric Association and Homer Electric Association (ADCCED, 2009).

The Kenai Peninsula is divided into two distinct geographic areas: the Kenai Mountains to the east and the Kenai Lowlands to the west. The Kenai Lowlands are a glaciated coastal shelf approximately 100 miles long, bordered on the west and north by Cook Inlet and on the east by the northeast-trending Kenai Mountains. The Lowlands are predominately drained by the Kenai River and contain the communities of Sterling, Soldotna, Kenai, Nikiski, Clam Gulch, and Homer. The Kenai Mountains extend from the southern tip of the Peninsula north to Turnagain Arm, and include the communities of Hope, Moose Pass, Cooper Landing, and Seward (Karlstrom, 1964).

The most significant groundwater resources in the Kenai Lowlands are contained in coarse-grained sands and gravels. They are characterized by high rates of recharge, and are usually found in flood plain, river terrace, and alluvial deposits. Unsorted glacial moraine and drift deposits generally have poor groundwater yields, as do discontinuous layers of confining clays and silt that are common throughout unconsolidated cover. Unconsolidated sediment is more common in the northern portions of the Lowlands, where it locally hosts thicker, more extensive clay aquitards and multiple aquifers.

Most of the wells in the Kenai-area are deep, with depths ranging from 50 to 200 feet. Static water levels in many of these wells are between 10 and 30 feet below the surface. Although groundwater quality can vary significantly over short distances, groundwater supplies are generally abundant in the area. (The preceding summary of regional geology and hydrogeology is based on studies by: Bailey and Hogan (1995); Freethey and Scully (1980); Glass (1996); Hartman, et al. (1972); and Karlstrom (1964).)

According to the well log (03/14/1990), the well extends approximately 140 feet below the ground surface but it draws water from an unconfined aquifer approximately 85 feet below the ground surface.

This system operates year-round and serves twenty-five non-residents through one service connection.

ELITE HEALTH AND FITNESS DRINKING WATER PROTECTION AREA

In order to evaluate whether a drinking water source is at risk, we must first evaluate what are the most likely pathways for surface contamination to reach the groundwater. These areas are determined by looking at the characteristics of the soil, groundwater, aquifer, and well.

The most probable area for contamination to reach the drinking water well is the Drinking Water Protection Area. The Drinking Water Protection Area is the area circling the well (the area influenced by pumping) and also the area upgradient of the well, usually forming a parabola shape. Because releases of contaminants within the protection area are most likely to impact the well, this area will serve as the focus for voluntary protection efforts.

There are many different methods for calculating the size of protection areas. Drinking Water Protection (DWP) uses a combination of two simple groundwater flow equations, the Thiem and uniform flow equations for all groundwater wells screened in unconsolidated material. The orientation of the protection zone is then drawn using a water table elevation map (if available) or a land surface elevation map of the area. The protection zone calculated by DWP is an estimate using the available information and resources, and may differ slightly from the actual capture zone. Because of uncertainties and changing site conditions, a factor of safety is added to the protection zone to form the drinking water protection area for the well.

The parameters used to calculate the shape of this protection zone are general for the whole alluvial plain and were obtained from various United States Geological Survey (USGS) reports, area well logs, and the Groundwater textbook by Freeze and Cherry (Freeze and Cherry, 1979).

The protection areas established for wells by the DEC are usually separated into two zones, limited by the watershed. These zones correspond to differences in the time-of-travel (TOT) of the water moving through the aquifer to the well. An analytical calculation was used to determine the size and shape of the protection area.

The time-of-travel for contaminants within the water varies and is dependent on the physical and chemical characteristics of each contaminant. The following is a summary of the two protection area zones for wells and the calculated time-of-travel for each:

Table 1. Definition of Zones

Zone	Definition
A	Several months time-of-travel
B	Less than the 2 year time-of-travel

The Drinking Water Protection Area for Elite Health and Fitness was determined using an analytical calculation and includes Zones A and B (See Map A of Appendix A).

INVENTORY OF POTENTIAL AND EXISTING CONTAMINANT SOURCES

DWP has completed an inventory of potential and existing sources of contamination within the Elite Health and Fitness drinking water protection area. This inventory was completed through a search of agency records and other publicly available information. Potential sources of contamination to the drinking water aquifer include a wide range of categories and types. Potential drinking water contaminants are found within agricultural, residential, commercial, and industrial areas, but can also occur within areas that have little or no development.

For the basis of all Class B public water system assessments, the following three categories of drinking water contaminants were inventoried:

- Bacteria and viruses;
- Nitrates and/or nitrites;
- Volatile organic chemicals

The sources are displayed on Map C of Appendix C and summarized in Table 1 of Appendix B.

RANKING OF CONTAMINANT RISKS

Once the potential and existing sources of contamination have been identified, they are assigned a ranking according to what type and level of risk they represent. Ranking of contaminant risks for a “potential” or “existing” source of contamination is a function of toxicity and volumes of specific contaminants associated with that source. Rankings include:

- Low;
- Medium;
- High; and
- Very High.

Tables 2 through 4 in Appendix B contain the ranking of potential and existing sources of contamination with respect to bacteria and viruses, nitrates and/or nitrites, and volatile organic chemicals.

VULNERABILITY OF ELITE HEALTH AND FITNESS DRINKING WATER SYSTEM

Vulnerability of a drinking water source to contamination is a combination of two factors:

- Natural Susceptibility; and
- Contaminant Risks.

A score for the Natural Susceptibility of the well is reached by considering the properties of the well and the aquifer.

$$\begin{array}{r}
 \text{Susceptibility of the Wellhead (0-25 Points)} \\
 + \\
 \text{Susceptibility of the Aquifer (0-25 Points)} \\
 = \\
 \text{Natural Susceptibility of the Well (0-50 Points)}
 \end{array}$$

A ranking is assigned for the Natural Susceptibility according to the point score:

Natural Susceptibility Ratings	
40-50 pts	Very High
30 to < 40 pts	High
20 to < 30 pts	Medium
< 20 pts	Low

Factors contributing to the susceptibility of the wellhead are: whether the sanitary seal is in place, protection from flooding, and if the well casing is properly grouted.

The wellhead for the Elite Health and Fitness received a susceptibility rating of **Low**. Although no sanitary survey is available for this system, a site visit 09/21/2008 confirmed that a sanitary seal is installed on the well and the land surface is sloped away from the well. It is unknown if the well is grouted according to DEC regulations. Sanitary seals prevent potential contaminants from entering the well, while sloping of the land surface away from the wellhead provides adequate surface water drainage, and grouting or concrete around the wellhead helps to prevent potential contaminants from traveling down the outside of the well casing.

Factors contributing to the susceptibility of the aquifer are: whether the aquifer is confined or unconfined, whether the well is completed in unconsolidated or fractured bedrock, whether wells and bore holes are

penetrating the aquifer and, if applicable, the confining layer.

The Elite Health and Fitness system draws water from an unconfined aquifer overlain by gravel, sand and clay. It received a **Medium** susceptibility rating because of its unconfined nature. Because unconfined aquifers are recharged by surface water and precipitation migrating downward from the surface, they are susceptible to contamination from outside sources.

Table 2 summarizes the Susceptibility scores and ratings for the Elite Health and Fitness system.

Table 2. Susceptibility

	Score	Rating
Susceptibility of the Wellhead	5	Low
Susceptibility of the Aquifer	14	Medium
Natural Susceptibility	19	High

Contaminant risks are derived from an evaluation of the routine sampling results of the water system and the presence of potential sources of contamination. Contaminant risks to a drinking water source depend on the type and distribution of contaminant sources. Flow charts are used to assign a point score, and ratings are assigned in the same way as for the natural susceptibility:

Contaminant Risk Ratings	
40-50 pts	Very High
30 to < 40 pts	High
20 to < 30 pts	Medium
< 20 pts	Low

Table 3 summarizes the Contaminant Risks for each category of drinking water contaminants for the Elite Health and Fitness system.

Table 3. Contaminant Risks

Category	Score	Rating
Bacteria and Viruses	12	Low
Nitrates and/or Nitrites	12	Low
Volatile Organic Chemicals	50	Very High

Finally, an overall vulnerability score is assigned for each water system by combining each of the contaminant risk scores with the natural susceptibility score:

$$\begin{array}{r}
 \text{Natural Susceptibility (0-50 Points)} \\
 + \\
 \text{Contaminant Risks (0-50 Points)} \\
 = \\
 \text{Vulnerability of the Drinking Water Source to} \\
 \text{Contamination (0-100 Points)}
 \end{array}$$

Again, rankings are assigned according to a point score:

Overall Vulnerability Ratings	
80-100 pts	Very High
60 to < 80 pts	High
40 to < 60 pts	Medium
< 40 pts	Low

Table 4 contains the overall vulnerability scores (0-100) and ratings for each of the three categories of drinking water contaminants for the Elite Health and Fitness system. Note: scores are rounded off to the nearest five.

Table 4. Overall Vulnerability

Category	Score	Rating
Bacteria and Viruses	30	Low
Nitrates and/or Nitrites	30	Low
Volatile Organic Chemicals	70	High

Bacteria and Viruses

The contaminant risk to the drinking water well for bacteria and viruses is determined to be **Low** with septic systems and roads contributing to the risk to the drinking water well.

Coliforms (a bacteria) are found naturally in the environment and while not necessarily a direct health threat, they are an indicator of other potentially harmful bacteria in the water, more specifically fecal coliforms and E. coli. These bacteria only come from human and animal fecal waste and can cause diarrhea, cramps, nausea, headaches, and other symptoms (EPA, 2008).

Only a small number of bacteria and viruses are required to endanger public health. Bacteria and viruses have not been detected during the last 5 years of sampling at Elite Health and Fitness (data reviewed in April, 2008).

After combining the contaminant risk for bacteria and viruses with the natural susceptibility of the well, the overall vulnerability of the well to contamination is **Low**.

Nitrates and Nitrites

The contaminant risk for nitrates and nitrites for Elite Health and Fitness is determined to be **Low** with septic systems and roads contributing to the risk to the drinkign water well.

The sampling history for Elite Health and Fitness indicates that nitrates and nitrites have not been detected within the last 5 years (data reviewed in April, 2008).

After combining the contaminant risk for nitrates and nitrites with the natural susceptibility of the well, the overall vulnerability of the well to contamination is **Low**.

Volatile Organic Chemicals

The contaminant risk for volatile organic chemicals is determined to be **Very High** with coal mining (active or inactive) contributing to the risk to the drinking water well. Septic systems, heating oil tanks, and roads are secondary factors.

The drinking water at Elite Health and Fitness has not recently been sampled for volatile organic chemicals (data reviewed in April, 2008).

After combining the contaminant risk for volatile organic chemicals with the natural susceptibility of the well, the overall vulnerability of the well to contamination is **High**.

Using the Source Water Assessment

This assessment of contaminant risks can be used as a foundation for local voluntary protection efforts as well as a basis for the continuous efforts on the part of Elite Health and Fitness to protect public health. It is anticipated that Source Water Assessments will be updated every five years to reflect any changes in the vulnerability and/or susceptibility of Elite Health and Fitness drinking water source.

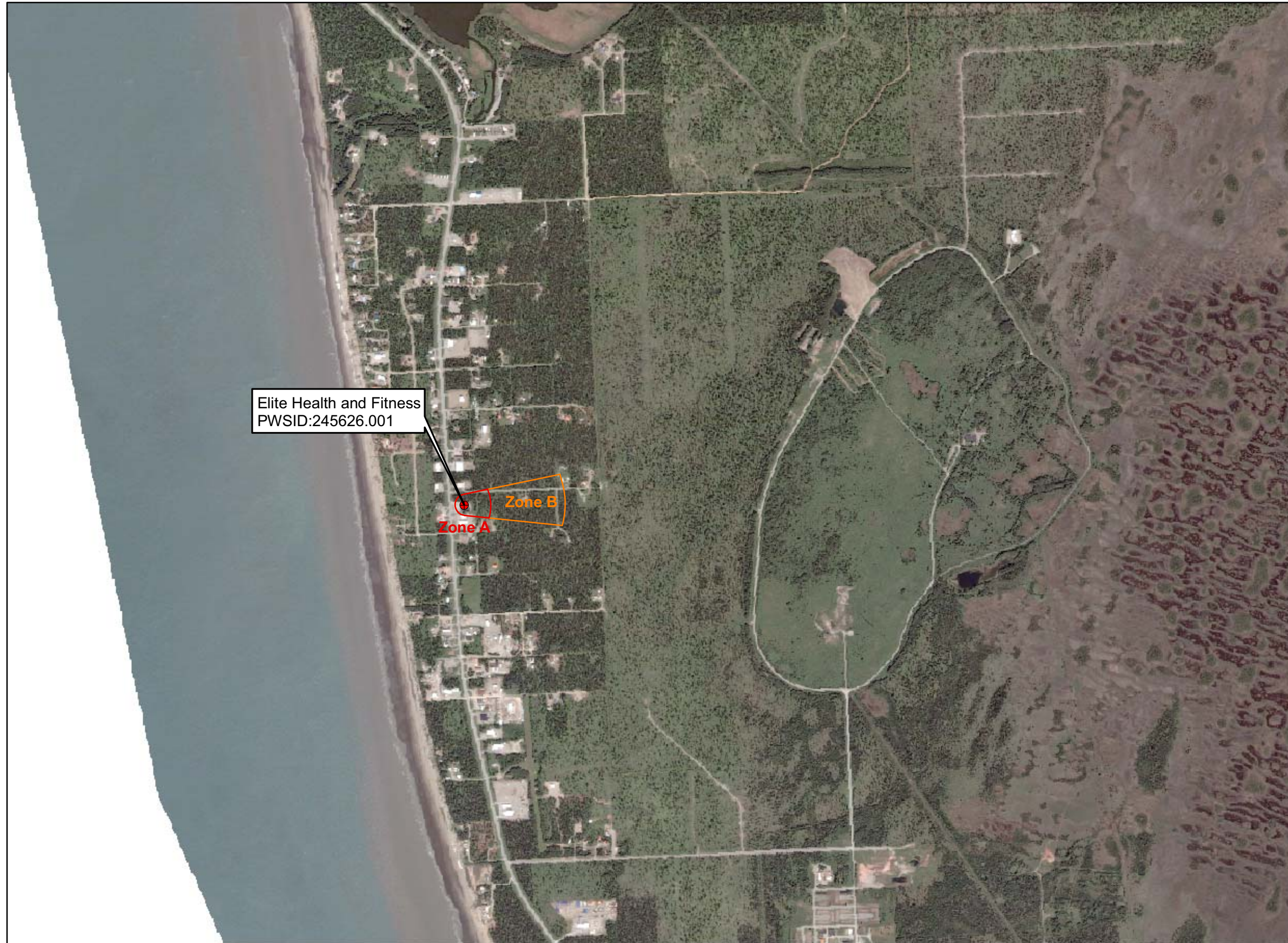
REFERENCES

- Alaska Department of Commerce, Community and Economic Development (ADCCED), Accessed 2009 [WWW document]. URL: http://www.commerce.state.ak.us/dca/commdb/CF_COMDB.htm
- Bailey, B.J., and Hogan, E.V., 1995. Overview of environmental and hydrogeologic conditions near Kenai, Alaska. U.S. Geological Survey Open-File Report 95-410, 18 p.
- Freethy, G.W., and Scully, D.R. 1980. Water Resources of the Cook Inlet Basin, Alaska. U.S. Geological Survey Hydrologic Investigation Atlas HA-620, prepared in cooperation with Alaska Water Study Committee, State of Alaska Department of Natural Resources, and Division of Geological and Geophysical Surveys.
- Freeze, R.A. and Cherry, J.A., 1979. Groundwater. Prentice-Hall, Englewood Cliffs, NJ.
- Glass, Roy, L. 1996. Groundwater Conditions and Quality in the Western Part of the Kenai Peninsula, Southcentral Alaska. U.S. Geological Survey Open File Report 94-466, prepared in cooperation with the Alaska Department of Natural Resources, Kenai Peninsula Borough, and Kenai Soil and Water Conservation District.
- Hartman, D.C., Pessel, G.H., and McGee, D.I., 1972. Kenai Group of Cook Inlet Basin, Alaska: State of Alaska. Open File Report #49, Department of Natural Resources Division of Geological and Geophysical Surveys, 5p.
- Karlstrom, T.N.V. 1964. Quaternary geology of the Kenai Lowland and glacial history of the Cook Inlet region, Alaska. U.S. Geological Survey Professional Paper 443, 64 p
- Kenai Peninsula Borough (KPB), Accessed 2008 [WWW document].
URL: <http://www.borough.kenai.ak.us/>.
- United States Environmental Protection Agency (EPA), Accessed 2008 [WWW document].
URL: <http://www.epa.gov/safewater/contaminants/index.html>.

APPENDIX A

Elite Health and Fitness Drinking Water Protection Area Location Map (Map A)

Public Water Well System for PWS #245626.001 Elite Health and Fitness



Legend

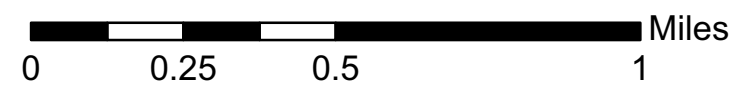
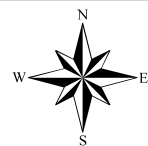
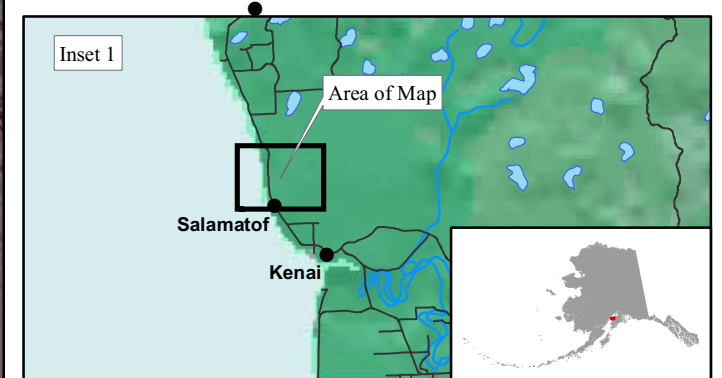
- Class B Public Water System Well
- Zone A Protection Area - Several Months Travel Time
- Zone B Protection Area - 2 Years Travel Time

Data Sources:
Contaminant Sources, Public Water System Wells, Alaska Department of Environmental Conservation (ADEC)

All other data:
Kenai Borough Imagery

Drinking Water Protection Areas based on "Alaska Drinking Water Protection Program - Guidance Manual for Class B Public Water Systems" published by ADEC

URS Corporation does not guarantee the accuracy or validity of the data provided.



APPENDIX B

Contaminant Source Inventory and Risk Ranking for Elite Health and Fitness (Tables 1-4)

Table 1

**Contaminant Source Inventory for
Elite Health and Fitness**

PWSID 245626.001

Contaminant Source Type	Contaminant Source ID	CS ID tag	Zone	Map Number	Comments
Coal mining (active or inactive?)	E01	E01	A	C	
Septic systems (serves one single-family home)	R02	R02	A	C	1 inferred septic system
Tanks, heating oil, residential (above ground)	R08	R08	A	C	1 assumed heating oil tank
Highways and roads, paved (cement or asphalt)	X20	X20	A	C	1 road
Coal mining (active or inactive?)	E01	E01	B	C	
Septic systems (serves one single-family home)	R02	R02	B	C	2 assumed septic systems
Tanks, heating oil, residential (above ground)	R08	R08	B	C	2 assumed heating oil tanks
Highways and roads, paved (cement or asphalt)	X20	X20	B	C	2 roads

Table 2

*Contaminant Source Inventory and Risk Ranking for
Elite Health and Fitness
Sources of Bacteria and Viruses*

PWSID 245626.001

<i>Contaminant Source Type</i>	<i>Contaminant Source ID</i>	<i>CS ID tag</i>	<i>Zone</i>	<i>Risk Ranking for Analysis</i>	<i>Map Number</i>	<i>Comments</i>
Septic systems (serves one single-family home)	R02	R02	A	Low	C	1 inferred septic system
Highways and roads, paved (cement or asphalt)	X20	X20	A	Low	C	1 road
Septic systems (serves one single-family home)	R02	R02	B	Low	C	2 assumed septic systems
Highways and roads, paved (cement or asphalt)	X20	X20	B	Low	C	2 roads

Table 3

*Contaminant Source Inventory and Risk Ranking for
Elite Health and Fitness
Sources of Nitrates/Nitrites*

PWSID 245626.001

<i>Contaminant Source Type</i>	<i>Contaminant Source ID</i>	<i>CS ID tag</i>	<i>Zone</i>	<i>Risk Ranking for Analysis</i>	<i>Map Number</i>	<i>Comments</i>
Septic systems (serves one single-family home)	R02	R02	A	Low	C	1 inferred septic system
Highways and roads, paved (cement or asphalt)	X20	X20	A	Low	C	1 road
Septic systems (serves one single-family home)	R02	R02	B	Low	C	2 assumed septic systems
Highways and roads, paved (cement or asphalt)	X20	X20	B	Low	C	2 roads

Table 4

*Contaminant Source Inventory and Risk Ranking for
Elite Health and Fitness
Sources of Volatile Organic Chemicals*

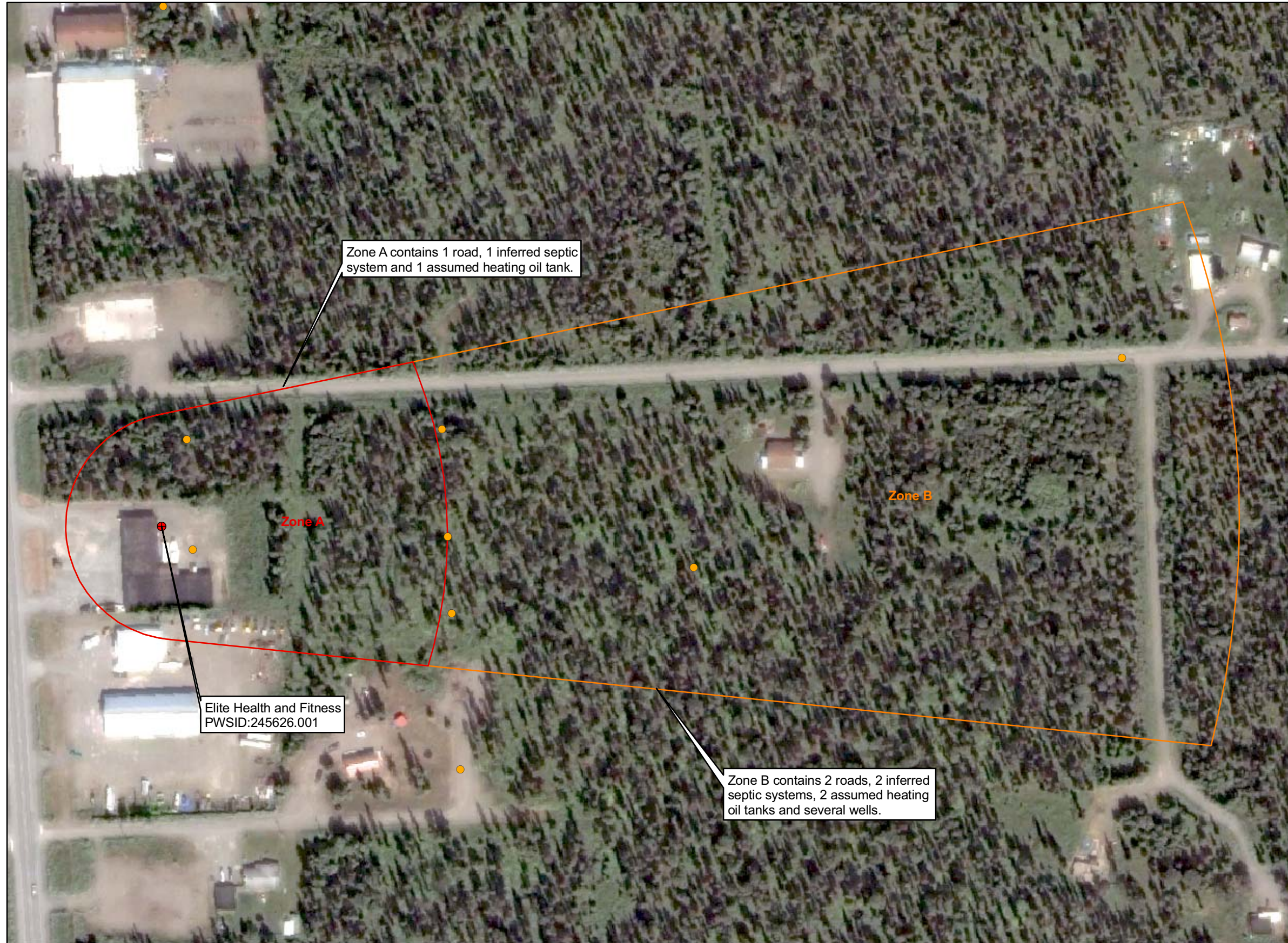
PWSID 245626.001

<i>Contaminant Source Type</i>	<i>Contaminant Source ID</i>	<i>CS ID tag</i>	<i>Zone</i>	<i>Risk Ranking for Analysis</i>	<i>Map Number</i>	<i>Comments</i>
Coal mining (active or inactive?)	E01	E01	A	High	C	
Septic systems (serves one single-family home)	R02	R02	A	Low	C	1 inferred septic system
Tanks, heating oil, residential (above ground)	R08	R08	A	Medium	C	1 assumed heating oil tank
Highways and roads, paved (cement or asphalt)	X20	X20	A	Low	C	1 road
Coal mining (active or inactive?)	E01	E01	B	High	C	
Septic systems (serves one single-family home)	R02	R02	B	Low	C	2 assumed septic systems
Tanks, heating oil, residential (above ground)	R08	R08	B	Medium	C	2 assumed heating oil tanks
Highways and roads, paved (cement or asphalt)	X20	X20	B	Low	C	2 roads

APPENDIX C

Elite Health and Fitness Drinking Water Protection Area and Potential and Existing Contaminant Sources (Map C)

**Public Water Well System for PWS # 245626.001 Elite Health and Fitness
Showing Potential and Existing Sources of Contamination**



Legend

- Class B Public Water System Well
- Groundwater Protection Zones**
- Zone A Protection Area - Several Months Travel Time
- Zone B Protection Area - 2 Years Travel Time

Data Sources:
Contaminant Sources, Public Water System Wells, Alaska Department of Environmental Conservation (ADEC)

All other data:
Kenai Borough Imagery

Drinking Water Protection Areas based on "Alaska Drinking Water Protection Program - Guidance Manual for Class B Public Water Systems" published by ADEC

URS Corporation does not guarantee the accuracy or validity of the data provided.

