



---

# Source Water Assessment

A Hydrogeologic Susceptibility and  
Vulnerability Assessment for  
Kulik Lodge  
Drinking Water System,  
Katmai National Park, Alaska

PWSID # 261224.001

February 2004

DRINKING WATER PROTECTION PROGRAM REPORT 1173  
Alaska Department of Environmental Conservation

# Source Water Assessment for Kulik Lodge Drinking Water System Katmai National Park, Alaska

## PWSID # 261224.001

DRINKING WATER PROTECTION PROGRAM REPORT 1173

The Drinking Water Protection Program (DWPP) is producing Source Water Assessments in compliance with the Safe Drinking Water Act Amendments of 1996. Each assessment includes a delineation of the source water area, an inventory of potential and existing contaminant sources that may impact the water, a risk ranking for each of these contaminants, and an evaluation of the potential vulnerability of these drinking water sources.

These assessments are intended to provide public water systems owners/operators, communities, and local governments with the best available information that may be used to protect the quality of their drinking water. The assessments combine information obtained from various sources, including the U.S. Environmental Protection Agency, Alaska Department of Environmental Conservation (ADEC), public water system owners/operators, and other public information sources. The results of this assessment are subject to change if additional data becomes available. It is anticipated this assessment will be updated every five years to reflect any changes in the vulnerability and/or susceptibility of public drinking water source. If you have any additional information that may affect the results of this assessment, please contact the Program Coordinator of DWPP, (907) 269-7521.

## CONTENTS

EXECUTIVE SUMMARY.....	1	INVENTORY OF POTENTIAL AND EXISTING CONTAMINANT SOURCES .....	2
KULIK LODGE PUBLIC DRINKING WATER SYSTEM .....	1	RANKING OF CONTAMINANT RISKS .....	2
KULIK LODGE DRINKING WATER PROTECTION AREA.....	1	VULNERABILITY OF KULIK LODGE DRINKING WATER SYSTEM .....	2

## TABLES

Table 1. Definition of Zones .....	2
Table 2. Susceptibility .....	3
Table 3. Contaminant Risks .....	3
Table 4. Overall Vulnerability.....	4

## APPENDICES

APPENDIX	A. Kulik Lodge Drinking Water Protection Area (Map A)
	B. Contaminant Source Inventory for Kulik Lodge (Table 1) Contaminant Source Inventory and Risk Ranking for Kulik Lodge – Bacteria and Viruses (Table 2) Contaminant Source Inventory and Risk Ranking for Kulik Lodge – Nitrates/Nitrites (Table 3) Contaminant Source Inventory and Risk Ranking for Kulik Lodge – Volatile Organic Chemicals (Table 4)
	C. Kulik Lodge Drinking Water Protection Area and Potential and Existing Contaminant Sources (Map C)
	D. Vulnerability Analysis for Contaminant Source Inventory and Risk Ranking for Kulik Lodge Public Drinking Water Source (Charts 1 – 8)

# Source Water Assessment for Kulik Lodge Source of Public Drinking Water, Katmai National Park, Alaska

---

## Drinking Water Protection Program Alaska Department of Environmental Conservation

### EXECUTIVE SUMMARY

The Kulik Lodge has one Public Water System (PWS) well. The well (PWSID# 261224.001) has been used as a drinking water source since it was drilled in 1993.

The well is a Class B (transient/non-community) water system is located near the edge of Kulik Lake in the Katmai National Park, Alaska. Available records indicate that the secondary storage for this water system is composed of four pressure tanks, and that the only treatment for the water is the pressure sand filter located in the well house. This system operates seasonally and serves 28 residents and 29 non-residents through twenty-six service connections. The wellhead received a susceptibility rating of **Low** and the aquifer received a susceptibility rating of **Medium**. Combining these two ratings produce a **Low** rating for the natural susceptibility of the well. Identified potential and current sources of contaminants for the primary public drinking water source include: injection wells, aboveground fuel tanks, and an airport. These identified potential and existing sources of contamination are considered as sources of bacteria and viruses, nitrates and/or nitrites, and volatile organic chemicals. Overall, the water well received a vulnerability rating of **Medium** for the bacteria and viruses, a vulnerability rating of **Medium** for nitrates and nitrites, and a vulnerability rating of **Medium** for volatile organic chemicals contaminant categories.

### KULIK LODGE PUBLIC DRINKING WATER SYSTEM

The Kulik Lodge well is a Class B (transient/non-community) public water system. The lodge is located near the edge of Kulik Lake, in Katmai National Park, Alaska (Sec. 9, T14S, R35W, Seward Meridian; see Map A of Appendix A). The Kulik Lodge is located within Katmai National Park, and is located approximately 70 miles west of King Salmon. Average annual precipitation in the Kulik Lodge area is 26 inches, including approximately 70 inches of

snowfall. Temperatures range from 30 to 66°F in summer and 4 to 30°F in winter (ADCED, 2003).

According to information supplied by ADEC for the Kulik Lodge PWS, the depth of the primary water well is 46 feet below the ground surface and is screened in a confined aquifer based on available construction details. Confined aquifers are likely less susceptible to groundwater impacts resulting from the downward migration of surface contaminants. The well is not located within a floodplain.

Information acquired from an October 1998 sanitary survey for the public water system indicated that the land surface was sloped away from the well. Generally, land surfaces that slope away from the wellhead promote surface water drainage, which reduces potential of contaminant migration down the well casing annulus. The well is grouted according to ADEC regulations. Proper grouting provides added protection against contaminants traveling along the well casing annulus and into source waters.

The entire Bristol Bay area was formerly covered by glaciers and the topography is representative of a postglacial area. Soils information is limited. Generally, the soils consist of silty sand overlying relatively clean sand. The silty soils are slightly frost-susceptible. Isolated pockets of permafrost are scattered throughout the area (DOWL, 1982).

### KULIK LODGE DRINKING WATER PROTECTION AREA

In order to evaluate whether a drinking water source is at risk, we must first evaluate what are the most likely pathways for surface contamination to reach the groundwater. These areas are determined by looking at the characteristics of the soil, groundwater, aquifer, and well.

The most probable area for contamination to reach the drinking water well is the area that contributes water to the well, the groundwater recharge area. This area is designated as the drinking water protection area (DWPA). Because releases of contaminants within the protection area are most

likely to impact the drinking water well, this area will serve as the focus for voluntary protection efforts. An analytical calculation was used to determine the size and shape of the DWPA for the Kulik Lodge PWS. The input parameters describing the attributes of the aquifer in this calculation were adopted from Groundwater (Freeze and Cherry, 1979). Available geology and groundwater contours were also considered to take into account any uncertainties in groundwater flow and aquifer characteristics to arrive at a meaningful protection area.

The protection areas established for wells by the ADEC are usually separated into four zones, limited by the watershed. These zones correspond to differences in the time-of-travel (TOT) of the water moving through the aquifer to the well (Please refer to the Guidance Manual for Class B Public Water Systems for additional information).

The time of travel for contaminants within the water varies and is dependent on the physical and chemical characteristics of each contaminant. The following is a summary of the four protection area zones for wells and the calculated time -of-travel for each:

**Table 1. Definition of Zones**

<b>Zone</b>	<b>Definition</b>
A	¼ the distance for the 2-yr. time -of-travel
B	Less than the 2 year time-of-travel
C	Less Than the 5 year time -of-travel
D	Less than the 10 year time -of-travel

The DWPA for the Kulik Lodge PWS was determined using an analytical calculation and includes Zones A and D (See Map A of Appendix A).

**INVENTORY OF POTENTIAL AND EXISTING CONTAMINANT SOURCES**

The Drinking Water Protection Program has completed an inventory of potential and existing sources of contamination within the Kulik Lodge DWPA. This inventory was completed through a search of agency records and other publicly available information. Potential sources of contamination to the drinking water aquifer include a wide range of categories and types. Potential drinking water contaminants are found within agricultural, residential, commercial, and industrial areas, but can also occur within areas that have little or no development.

For the basis of all Class B public water system assessments, three categories of drinking water contaminants were inventoried. They include:

- Bacteria and viruses,
- Nitrates and/or nitrites,
- Volatile organic chemicals.

The sources are displayed on Map C of Appendix C and summarized in Table 1 of Appendix B.

**RANKING OF CONTAMINANT RISKS**

Once the potential and existing sources of contamination have been identified, they are assigned a ranking according to what type and level of risk they represent. Ranking of contaminant risks for a “potential” or “existing” source of contamination is a function of toxicity and volumes of specific contaminants associated with that source. Rankings include:

- Low,
- Medium,
- High, and
- Very High.

The time-of-travel for contaminants within the water varies and is dependent on the physical and chemical characteristics of each contaminant. Bacteria and Viruses are only inventoried in Zones A and B because of their short life span. Only “Very High” and “High” rankings are inventoried within the outer Zone D due to the probability of contaminant dilution by the time the contaminants get to the well. Tables 2 through 4 in Appendix B contain the ranking of potential and existing sources of contamination with respect to bacteria and viruses, nitrates and/or nitrites, and volatile organic chemicals.

**VULNERABILITY OF THE KULIK LODGE DRINKING WATER SYSTEM**

Vulnerability of a drinking water source to contamination is a combination of two factors:

- Natural susceptibility, and
- Contaminant risks.

Appendix D contains eight charts, which together form the ‘Vulnerability Analysis’ for a source water assessment for a public drinking water source. Chart 1 analyzes the ‘Susceptibility of the Wellhead’ to contamination by looking at the construction of the well and its surrounding area. Chart 2 analyzes the

'Susceptibility of the Aquifer' to contamination by looking at the naturally occurring attributes of the water source and influences on the groundwater system that might lead to contamination. Chart 3 analyzes 'Contaminant Risks' for the drinking water source with respect to bacteria and viruses. The 'Contaminant Risks' portion of the analysis considers potential sources of contaminants as well as a review of contamination that has or may have occurred, but has not arrived or been detected at the well. Lastly, Chart 4 contains the 'Vulnerability Analysis for Bacteria and Viruses'. Charts 5 through 8 contain the Contaminant Risks and Vulnerability Analyses for nitrates and nitrites and volatile organic chemicals, respectively.

A score for the Natural Susceptibility is reached by considering the properties of the well and the aquifer.

Susceptibility of the Wellhead (0 – 25 Points)  
(Chart 1 of Appendix D)

+

Susceptibility of the Aquifer (0 – 25 Points)  
(Chart 2 of Appendix D)

=

Natural Susceptibility (Susceptibility of the Well)  
(0 – 50 Points)

A ranking is assigned for the Natural Susceptibility according to the point score:

Natural Susceptibility Ratings	
40 to 50 pts	Very High
30 to < 40 pts	High
20 to < 30 pts	Medium
< 20 pts	Low

The Kulik Lodge's water well is in a confined aquifer. Confined aquifers are less susceptible to potential groundwater quality impacts posed by the migration of surface water contaminants downward from the surface. Table 2 shows the susceptibility scores and ratings for this PWS.

**Table 2. Susceptibility**

	Score	Rating
Susceptibility of the Wellhead	0	Low
Susceptibility of the Aquifer	13	Medium

Natural Susceptibility      13      Low

Contaminant risks to a drinking water source depend on the type, number or density, and distribution of contaminant sources. This score has been derived from an examination of existing and historical contamination that has been detected at the drinking water source through routine sampling. It also evaluates potential sources of contamination. Flow charts are used to assign a point score, and ratings are assigned in the same way as for the natural susceptibility:

Contaminant Risk Ratings	
40 to 50 pts	Very High
30 to < 40 pts	High
20 to < 30 pts	Medium
< 20 pts	Low

Table 3 summarizes the Contaminant Risks for each category of drinking water contaminants.

**Table 3. Contaminant Risks**

Category	Score	Rating
Bacteria and Viruses	40	Very High
Nitrates and/or Nitrites	42	Very High
Volatile Organic Chemicals	40	Very High

Finally, an overall vulnerability score is assigned for each water system by combining each of the contaminant risk scores with the natural susceptibility score:

Natural Susceptibility (0 – 50 points)

+

Contaminant Risks (0 – 50 points)

=

Vulnerability of the  
Drinking Water Source to Contamination (0 – 100).

Again, rankings are assigned according to a point score:

Overall Vulnerability Ratings	
80 to 100 pts	Very High
60 to < 80 pts	High
40 to < 60 pts	Medium
< 40 pts	Low

Table 4 contains the overall vulnerability scores (0 – 100) and ratings for each of the three categories of drinking water contaminants. Note: scores are rounded off to the nearest five.

**Table 4. Overall Vulnerability**

Category	Score	Rating
Bacteria and Viruses	55	Medium
Nitrates and Nitrites	55	Medium
Volatile Organic Chemicals	55	Medium

**Bacteria and Viruses**

The contaminant risk for bacteria and viruses is **Very High**. The risk is primarily attributed to the presence of an injection well in Zone A (see Table 2 – Appendix B).

No positive bacteria counts have been reported in recent (within five years) sampling events (See Chart 3 – Contaminant Risks for Bacteria and Viruses in Appendix D). Only a small amount of bacteria and viruses are required to endanger public health.

After combining the contaminant risk for bacteria and viruses with the natural susceptibility of the well, the overall vulnerability of the well to contamination is **Medium**.

**Nitrates and Nitrites**

The contaminant risk for nitrates and nitrites is **Very High**. The risk to this source of public drinking water is primarily attributed to the presence of an injection well in Zone A (see Table 3 – Appendix B).

Nitrates are very mobile, moving at approximately the same rate as water. The sampling history for this well indicates that low levels of nitrates have been detected in recent sampling events. However, the reported concentrations of nitrates do not exceed the maximum contaminant level (MCL) of 10 mg/L. Nitrate concentrations in uncontaminated groundwater are typically less than 2 mg/L; therefore, nitrate concentrations above 2 mg/L may be indicative of man-made sources (See Chart 5 - Contaminant Risks for Nitrates and/or Nitrites in Appendix D).

Nitrate levels are often derived from the decomposition of organic matter in soils. Although the nitrate source is unknown, such occurrences may be attributed to septic systems or other sources. After combining the contaminant risk for nitrates and nitrites with the natural susceptibility of the well, the

overall vulnerability of the well to nitrate and nitrite contamination is **Medium**.

**Volatile Organic Chemicals**

The contaminant risk for volatile organic chemicals is **Very High**. The risk is primarily attributed to the presence of an airport in Zone A. Numerous other potential contaminant sources are also found within the protection area (see Table 4 – Appendix B).

No recent sampling data was available in ADEC records for the Kulik Lodge (See Chart 7 – Contaminant Risks for Volatile Organic Chemicals in Appendix D).

After combining the contaminant risk for volatile organic chemicals with the natural susceptibility of the well, the overall vulnerability of the well to contamination is **Medium**.

**Using the Source Water Assessment**

This assessment of contaminant risks can be used as a foundation for local voluntary protection efforts as well as a basis for the continuous efforts on the part of the Kulik Lodge to protect public health. It is anticipated that Source Water Assessments will be updated every five years to reflect any changes in the vulnerability and/or susceptibility of the drinking water source.

## REFERENCES

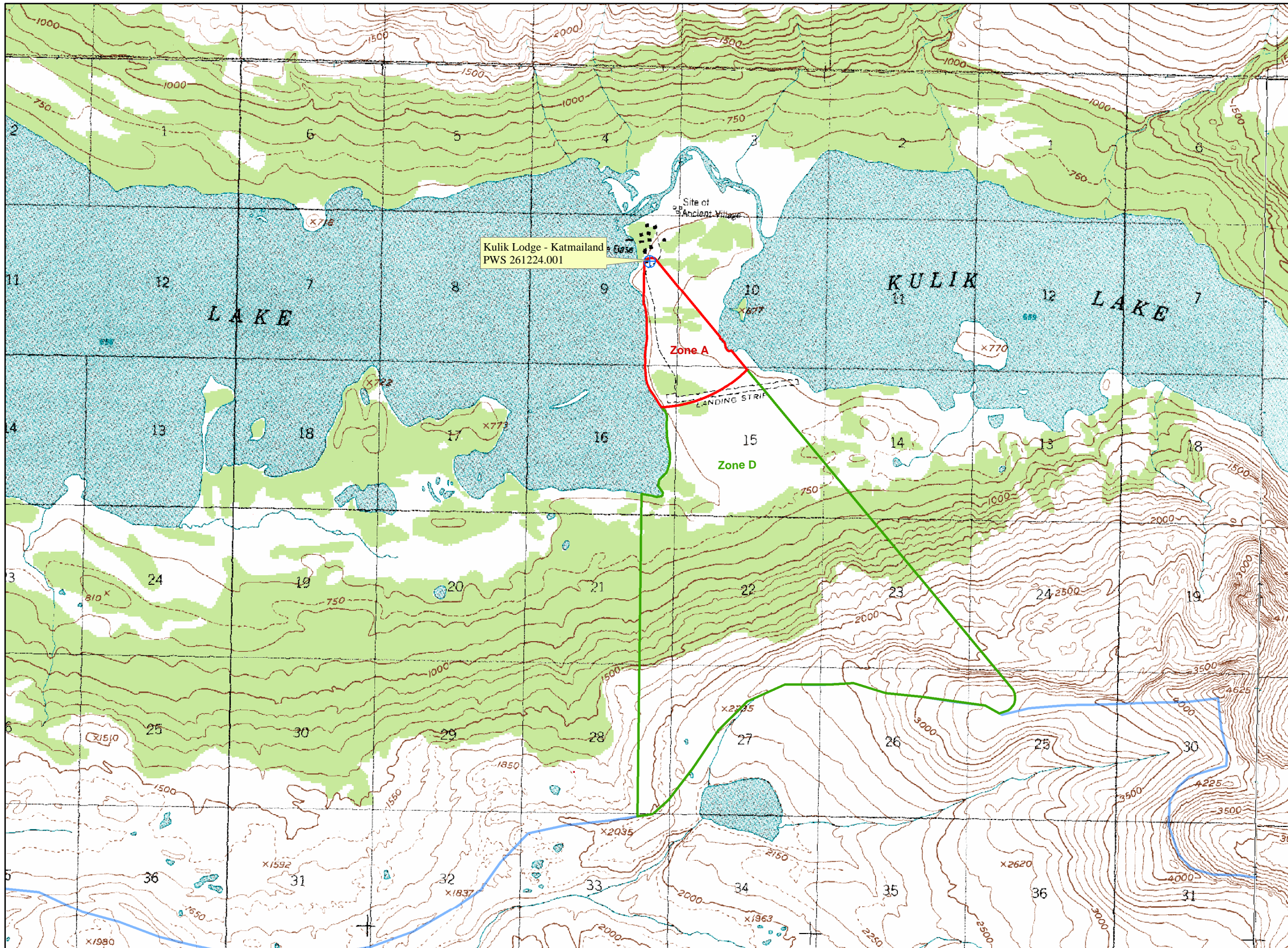
- Alaska Department of Community and Economic Development (ADCED), 2003 [WWW document]. URL: [http://www.dced.state.ak.us/cbd/commdb/CF\\_COMDB.htm](http://www.dced.state.ak.us/cbd/commdb/CF_COMDB.htm)
- Alaska Department of Environmental Conservation, Contaminated Sites Database, 2003 [WWW database], URL [http://www.state.ak.us/dec/dspar/csites/cs\\_search.htm](http://www.state.ak.us/dec/dspar/csites/cs_search.htm)
- Alaska Department of Environmental Conservation, Leaking Underground Storage Tank Database, 2003 [WWW database], URL [http://www.dec.state.ak.us/spar/stp/ust/search/fac\\_search.asp](http://www.dec.state.ak.us/spar/stp/ust/search/fac_search.asp)
- DOWL Engineers (DOWL), 1982, Upper Bristol Bay Region Community Planning Profiles.
- Freeze, R. A., and Cherry, J.A. 1979, Groundwater, Prentice-Hall, Englewood Cliffs, New Jersey
- United States Environmental Protection Agency (EPA), 2002 [WWW document]. URL <http://www.epa.gov/safewater/mcl.html>.



# **APPENDIX A**

## **Drinking Water Protection Area Location Map (Map A)**

**Public Water Well System for PWS #261224.001 Kulik Lodge - Katmailand**



**LEGEND**

- Public Water System Well
- Hydrography/Physical**
  - Parcels
  - Stream
  - Lake or Pond
  - Contours
  - Watershed Boundary
- Transportation**
  - Primary Route (Class 1)
  - Secondary Route (Class 2)
  - Road (Class 3)
  - Road (Class 4)
  - Road (Class 5, Four-wheel drive)
- Groundwater Protection Zones**
  - Zone A Protection Area- Several Months Travel Time
  - Zone D Protection Area- 10 Years Travel Time or Watershed Boundary

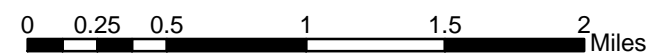
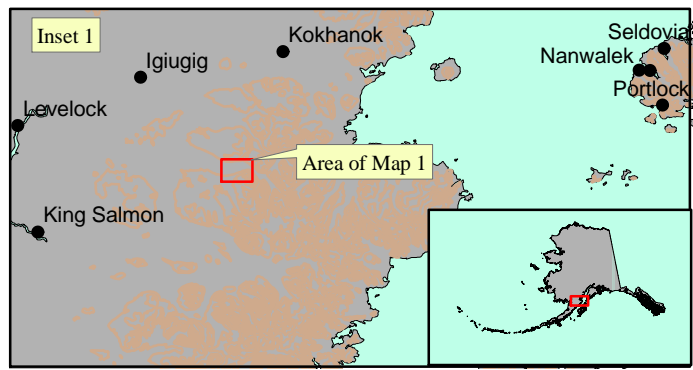
Data Sources:  
 Contaminant Sources, Public Water System Wells, Contours  
 Alaska Department of Environmental Conservation (ADEC)

Critical Facilities, Federal Emergency Management Agency (FEMA)

All other data:  
 United States Geological Survey (USGS)

Drinking Water Protection Areas based on "Alaska Drinking Water Protection Program - Guidance Manual for Class B Public Water Systems" published by ADEC

URS Corporation does not guarantee the accuracy or validity of the data provided.



## **APPENDIX B**

### **Contaminant Source Inventory and Risk Rankings (Tables 1-4)**

**Table 1**

**Contaminant Source Inventory for  
Kulik lodge - Katmailand**

**PWSID 261224.00.**

<b>Contaminant Source Type</b>	<b>Contaminant Source ID</b>	<b>CS ID tag</b>	<b>Zone</b>	<b>Map Number</b>	<b>Comments</b>
Injection wells (Class V) Large-Capacity Septic System (Drainfield Disposal Method)	D10	D10-01	A	C	
Tanks, heating oil, nonresidential (aboveground)	T14	T14-01	A	C	Assumed that 1 above ground heating oil tank is located in Zone A
Airports	X14	X14-01	A	C	

**Table 2**

*Contaminant Source Inventory and Risk Ranking for  
Kulik lodge - Katmailand  
Sources of Bacteria and Viruses*

**PWSID 261224.001**

<i>Contaminant Source Type</i>	<i>Contaminant Source ID</i>	<i>CS ID tag</i>	<i>Zone</i>	<i>Risk Ranking for Analysis</i>	<i>Map Number</i>	<i>Comments</i>
Injection wells (Class V) Large-Capacity Septic System (Drainfield Disposal Method)	D10	D10-01	A	High	C	

**Table 3**

*Contaminant Source Inventory and Risk Ranking for  
Kulik lodge - Katmailand  
Sources of Nitrates/Nitrites*

**PWSID 261224.001**

<i>Contaminant Source Type</i>	<i>Contaminant Source ID</i>	<i>CS ID tag</i>	<i>Zone</i>	<i>Risk Ranking for Analysis</i>	<i>Map Number</i>	<i>Comments</i>
Injection wells (Class V) Large-Capacity Septic System (Drainfield Disposal Method)	D10	D10-01	A	High	C	
Airports	X14	X14-01	A	Low	C	

*Contaminant Source Inventory and Risk Ranking for  
Kulik lodge - Katmailand  
Sources of Volatile Organic Chemicals*

*PWSID 261224.001*

**Table 4**

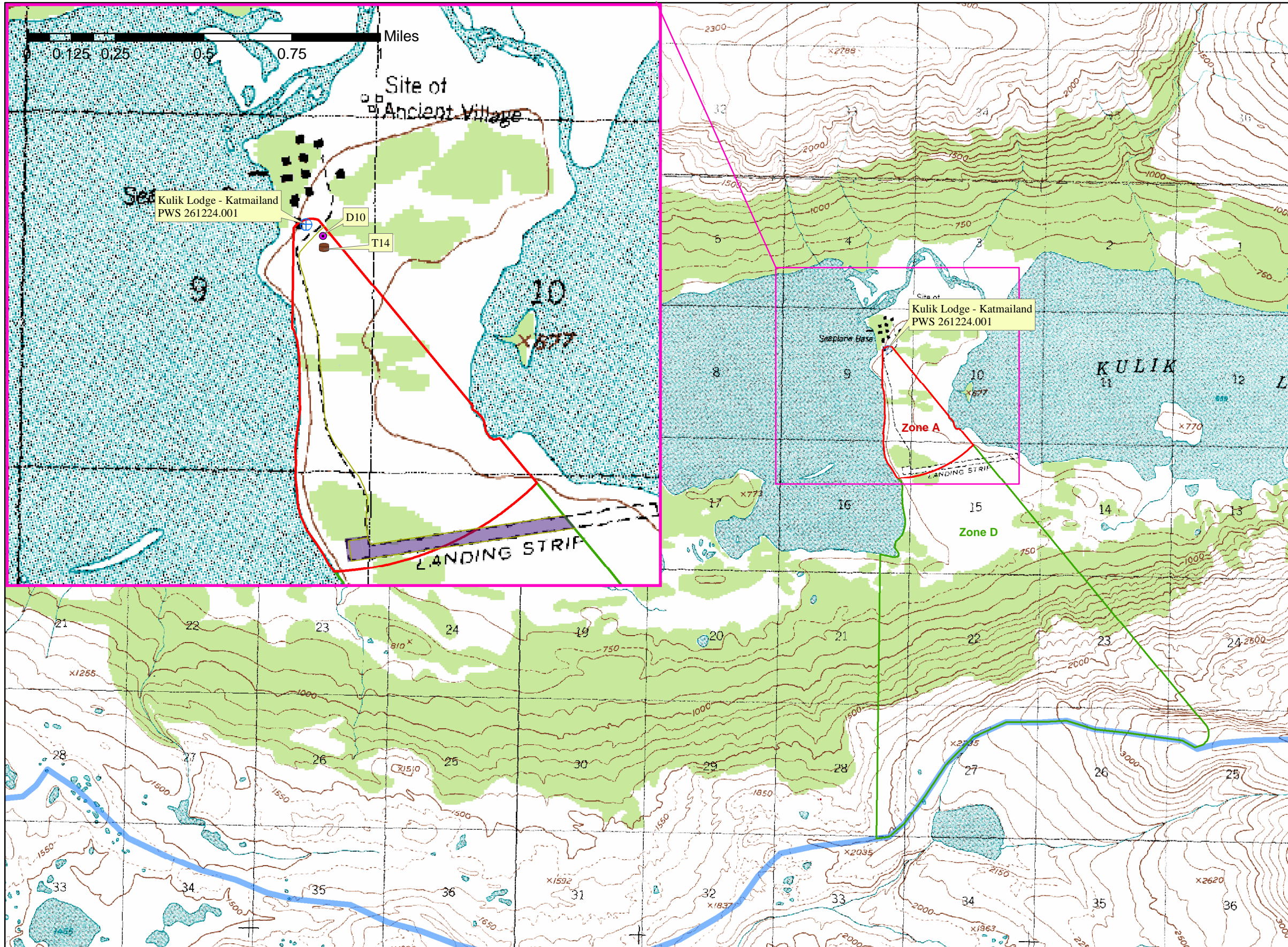
<i>Contaminant Source Type</i>	<i>Contaminant Source ID</i>	<i>CS ID tag</i>	<i>Zone</i>	<i>Risk Ranking for Analysis</i>	<i>Map Number</i>	<i>Comments</i>
Injection wells (Class V) Large-Capacity Septic System (Drainfield Disposal Method)	D10	D10-01	A	Low	C	
Tanks, heating oil, nonresidential (aboveground)	T14	T14-01	A	Low	C	Assumed that 1 above ground heating oil tank is located in Zone A
Airports	X14	X14-01	A	High	C	

## **APPENDIX C**

### **Drinking Water Protection Area and Potential and Existing Contaminant Sources (Map C)**



**Public Water Well System for PWS #261224.001 Kulik Lodge - Katmailand  
Showing Potential and Existing Sources of Contamination**



**LEGEND**

- Public Water System Well

**Hydrography/Physical**

- Parcels
- Stream
- Lake or Pond
- Contours
- Watershed Boundary

**Transportation**

- Primary Route (Class 1)
- Secondary Route (Class 2)
- Road (Class 3)
- Road (Class 4)
- Road (Class 5, Four-wheel drive)

**Groundwater Protection Zones**

- Zone A Protection Area- Several Months Travel Time
- Zone D Protection Area- 10 Years Travel Time or Watershed Boundary

**Existing or Potential Contaminant Sources**

- Injection Well (Class V) Large Capacity Septic Systems (Drainfield Disposal Method) (D10)
- Tanks, heating oil, nonresidential (aboveground) (T14)
- Airports/Landing Strips (X14)

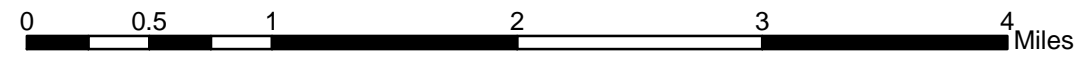
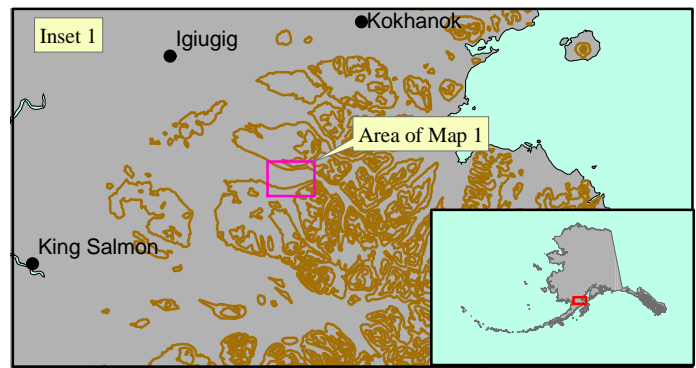
Data Sources:  
Contaminant Sources, Public Water System Wells, Contours  
Alaska Department of Environmental Conservation (ADEC)

Critical Facilities, Federal Emergency Management Agency (FEMA)

All other data:  
United States Geological Survey (USGS)

Drinking Water Protection Areas based on "Alaska Drinking Water Protection Program - Guidance Manual for Class B Public Water Systems" published by ADEC

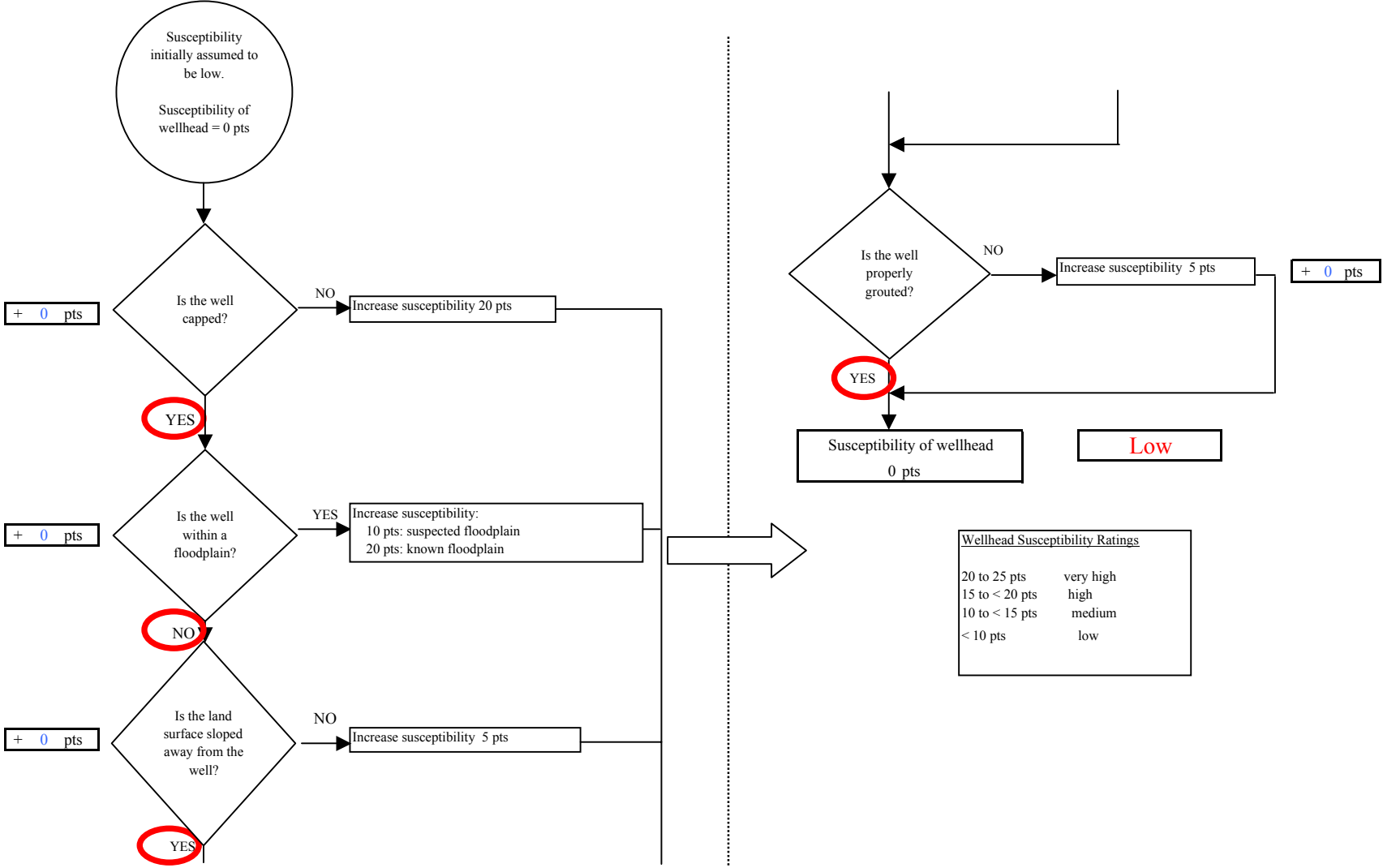
URS Corporation does not guarantee the accuracy or validity of the data provided.



## **APPENDIX D**

### **Vulnerability Analysis for Public Drinking Water Source (Charts 1-8)**

**Chart 1. Susceptibility of the wellhead - Kulik Lodge (PWS No. 261224.001)**



**Chart 2. Susceptibility of the aquifer Kulik Lodge (PWS No. 261224.001)**

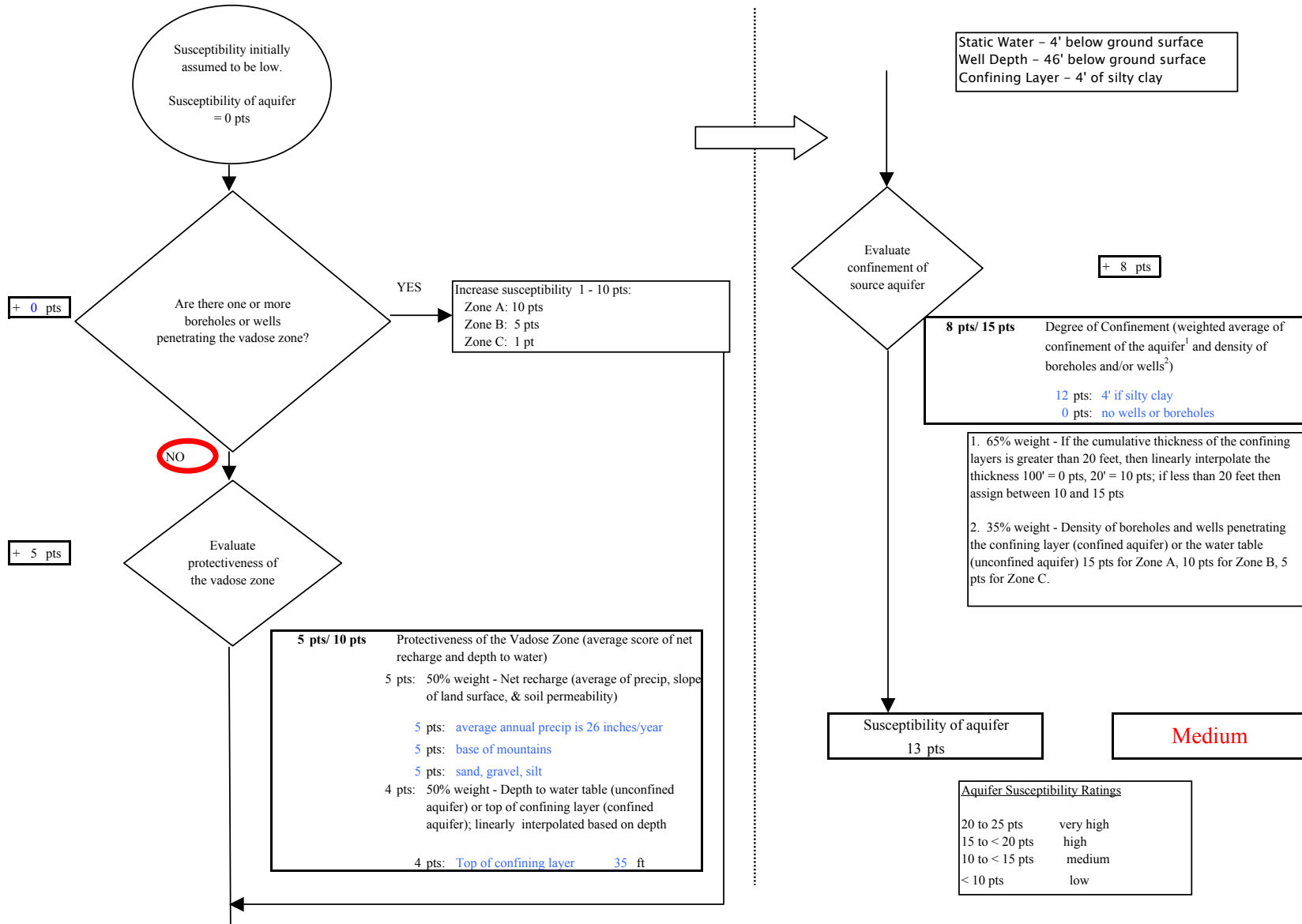


Chart 3. Contaminant risks for Kulik Lodge (PWS No. 261224.001) - Bacteria & Viruses

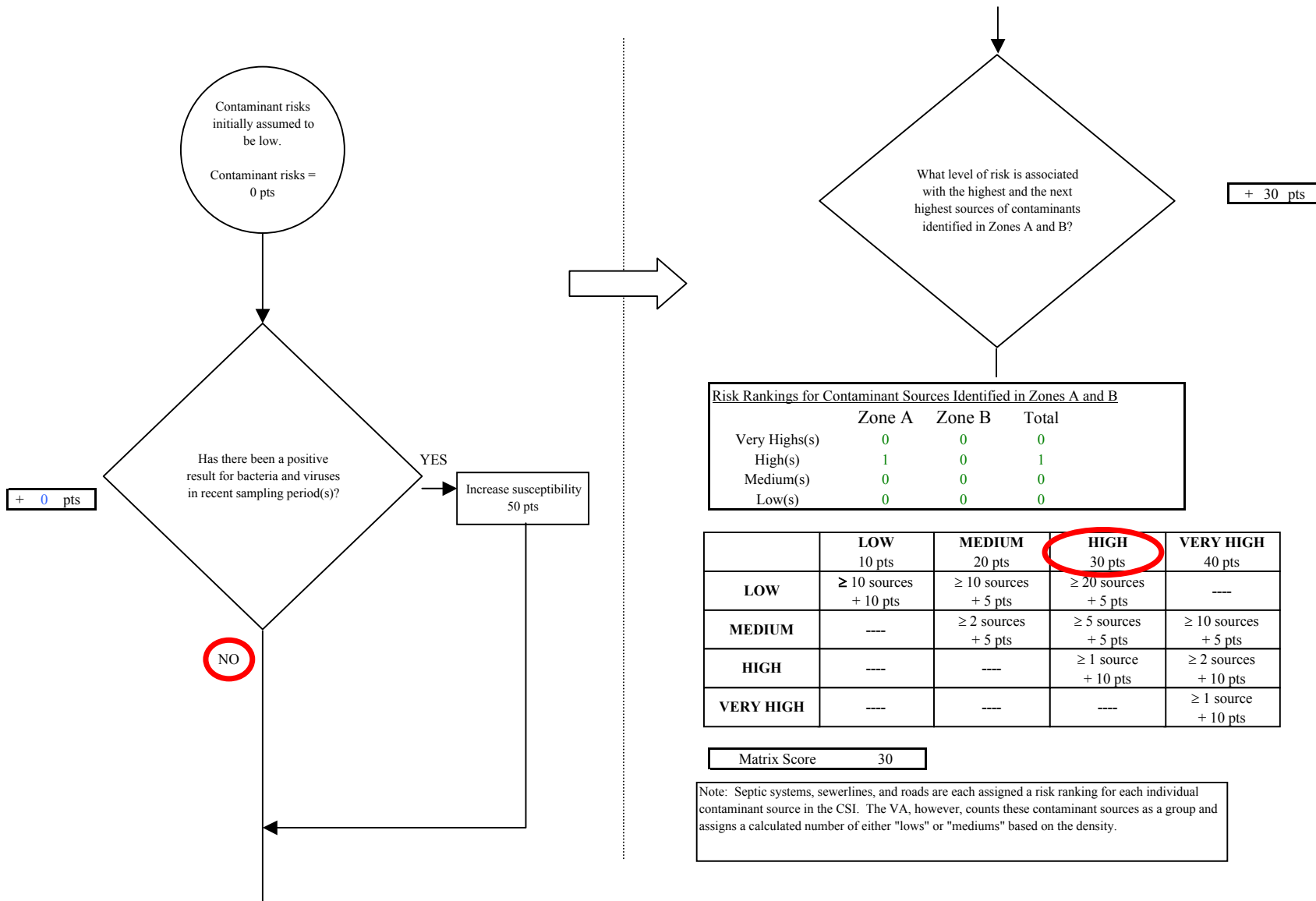
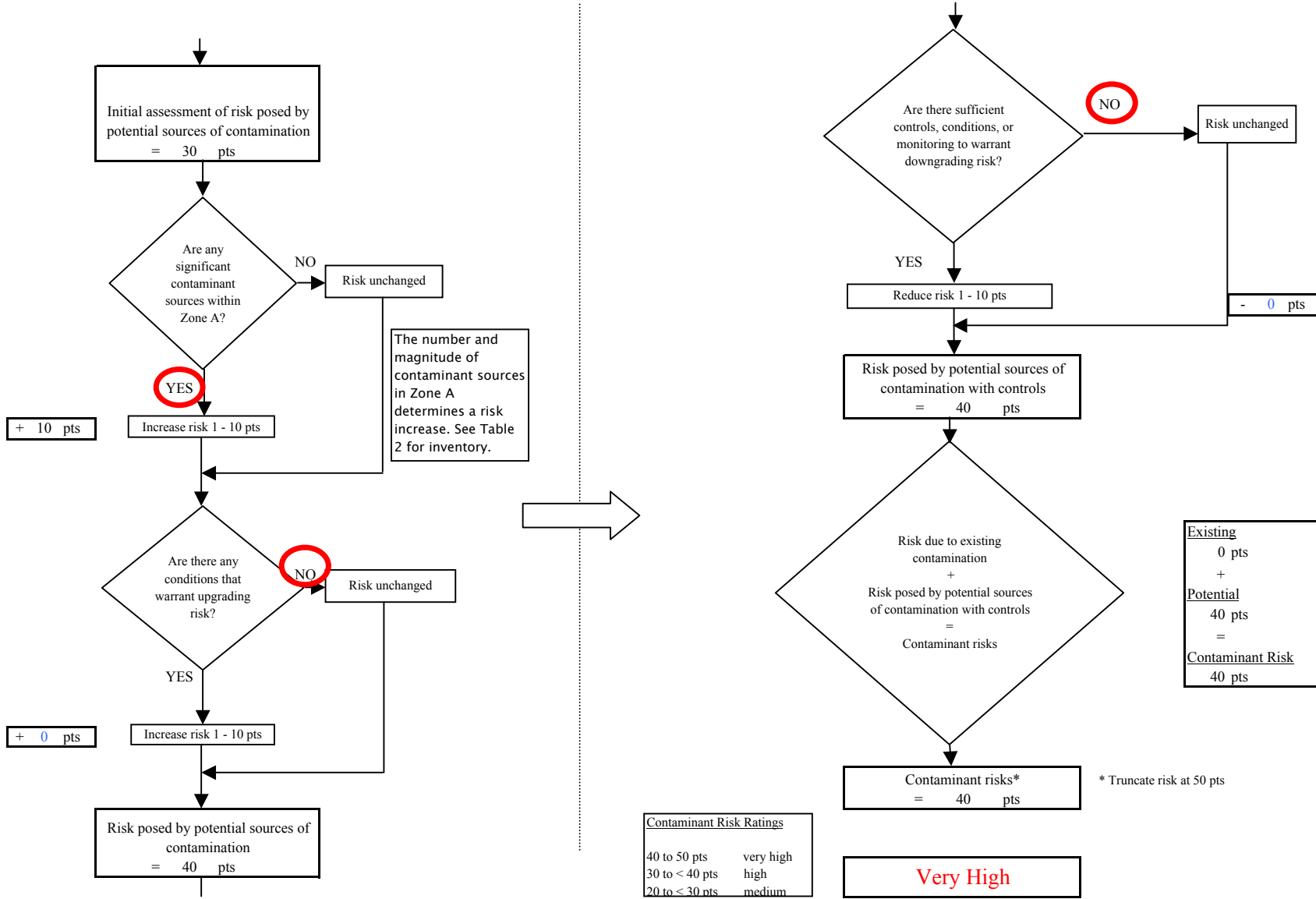


Chart 3. Contaminant risks for Kulik Lodge (PWS No. 261224.001) - Bacteria & Viruses



Contaminant Risk Ratings	
40 to 50 pts	very high
30 to < 40 pts	high
20 to < 30 pts	medium

Existing	0 pts
+	
Potential	40 pts
=	
Contaminant Risk	40 pts

**Chart 4. Vulnerability analysis for Kulik Lodge (PWS No. 261224.001) - Bacteria & Viruses**

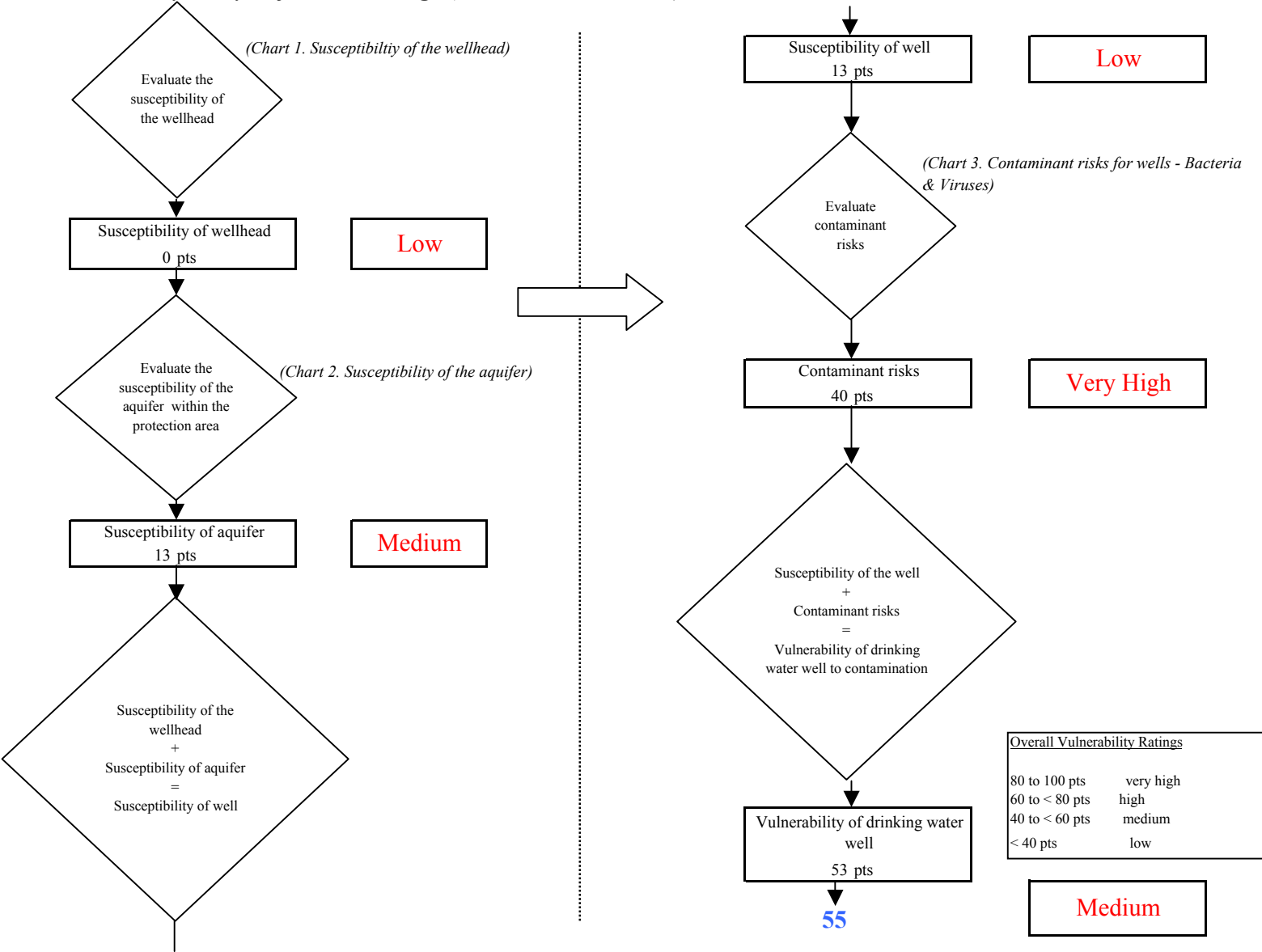


Chart 5. Contaminant risks for Kulik Lodge (PWS No. 261224.001) - Nitrates and Nitrites

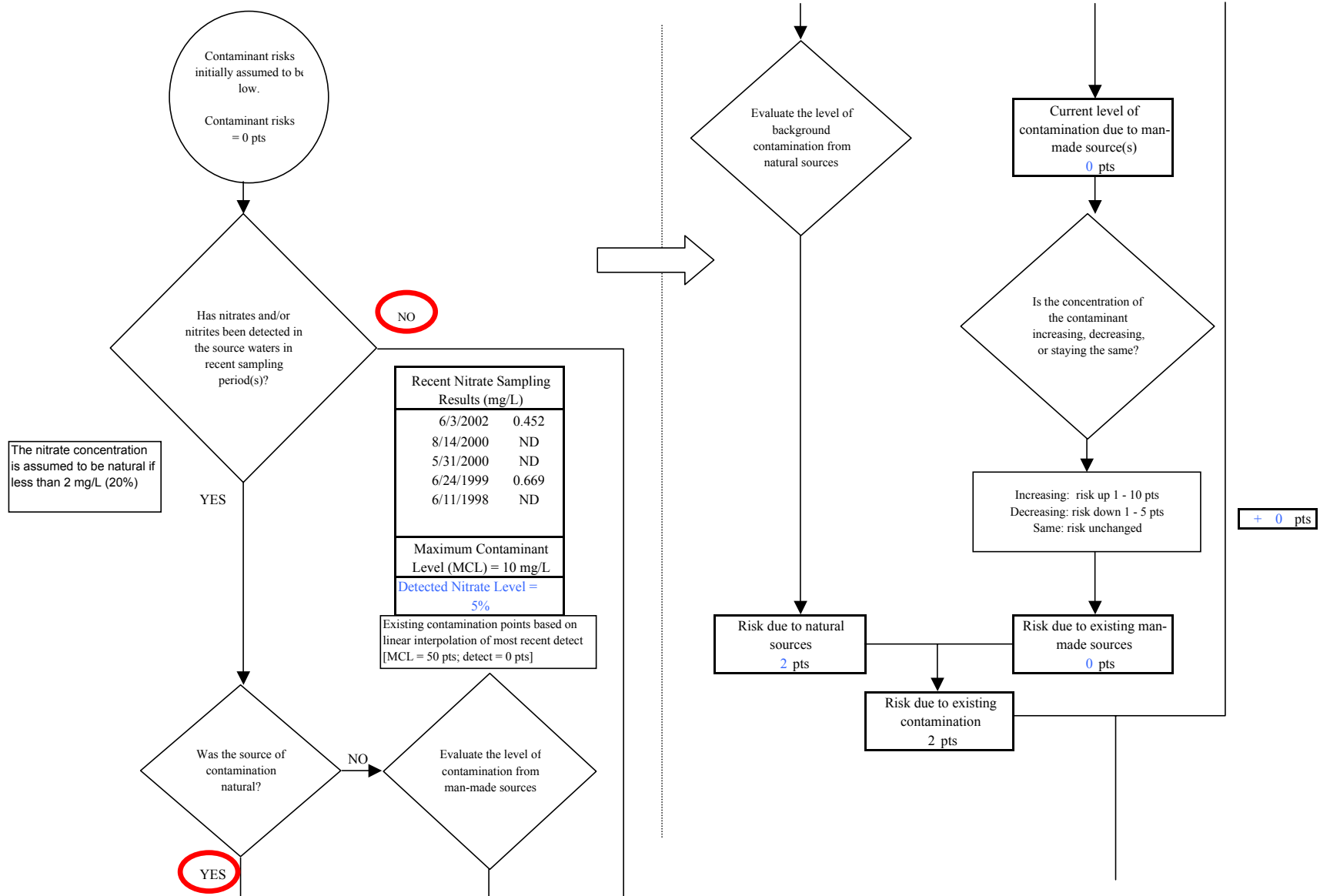
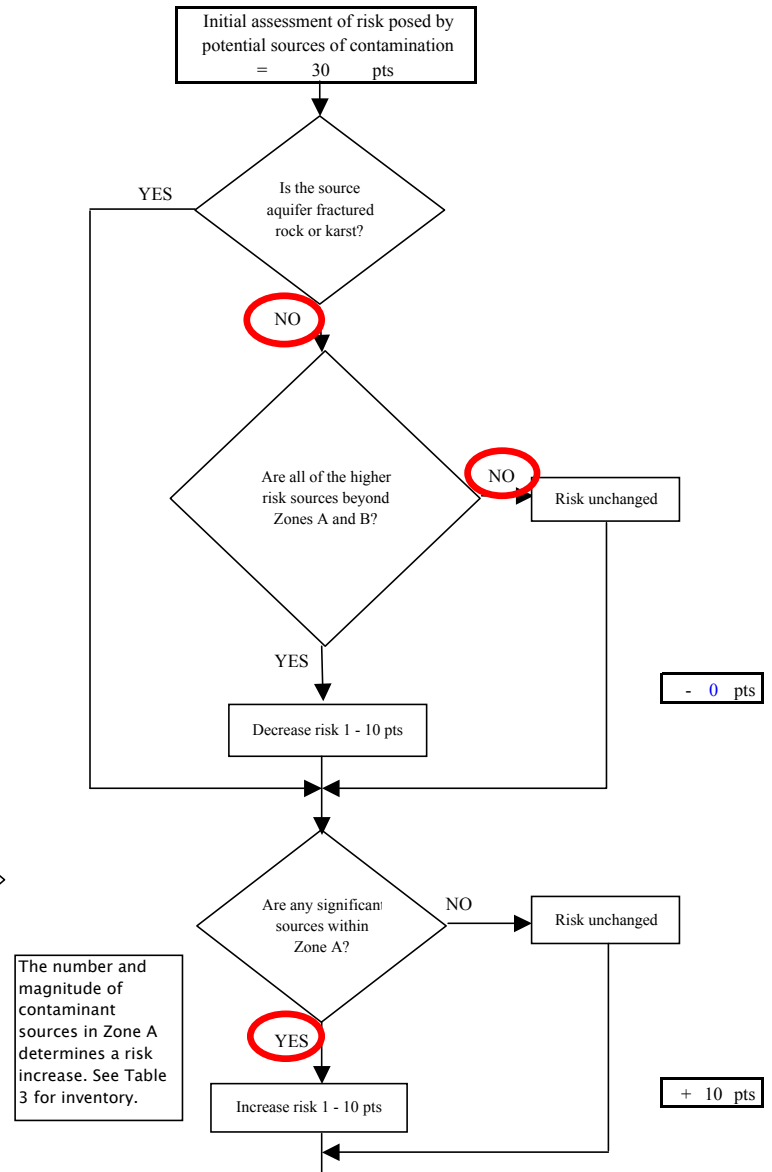
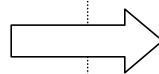
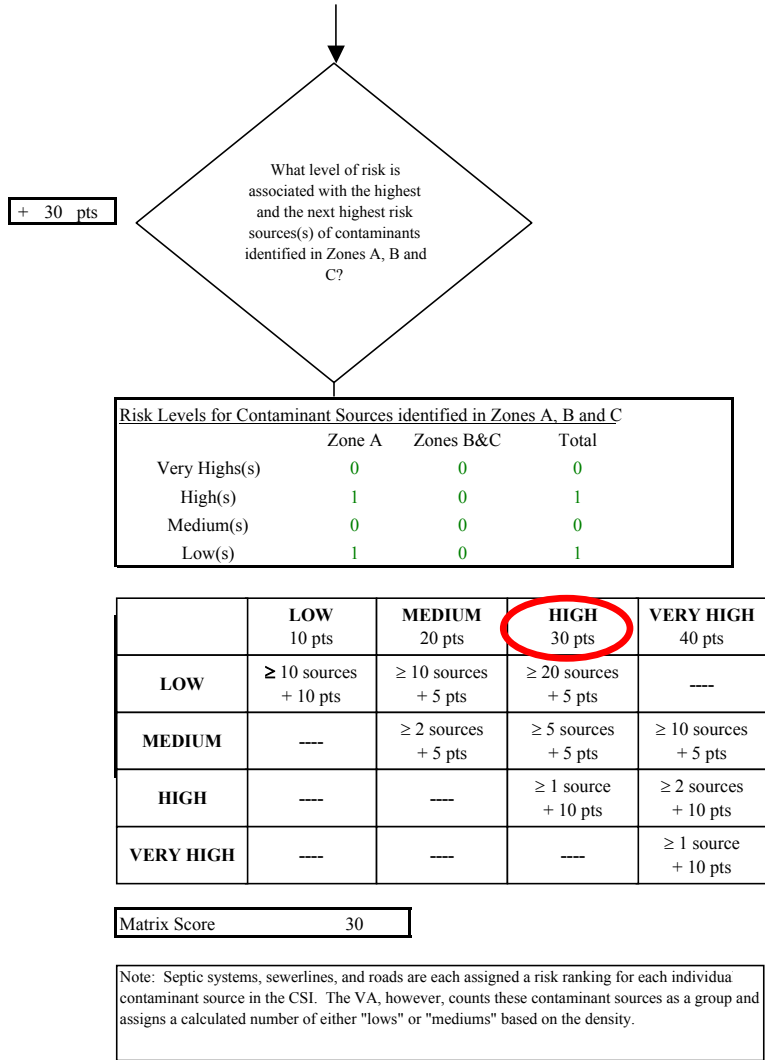
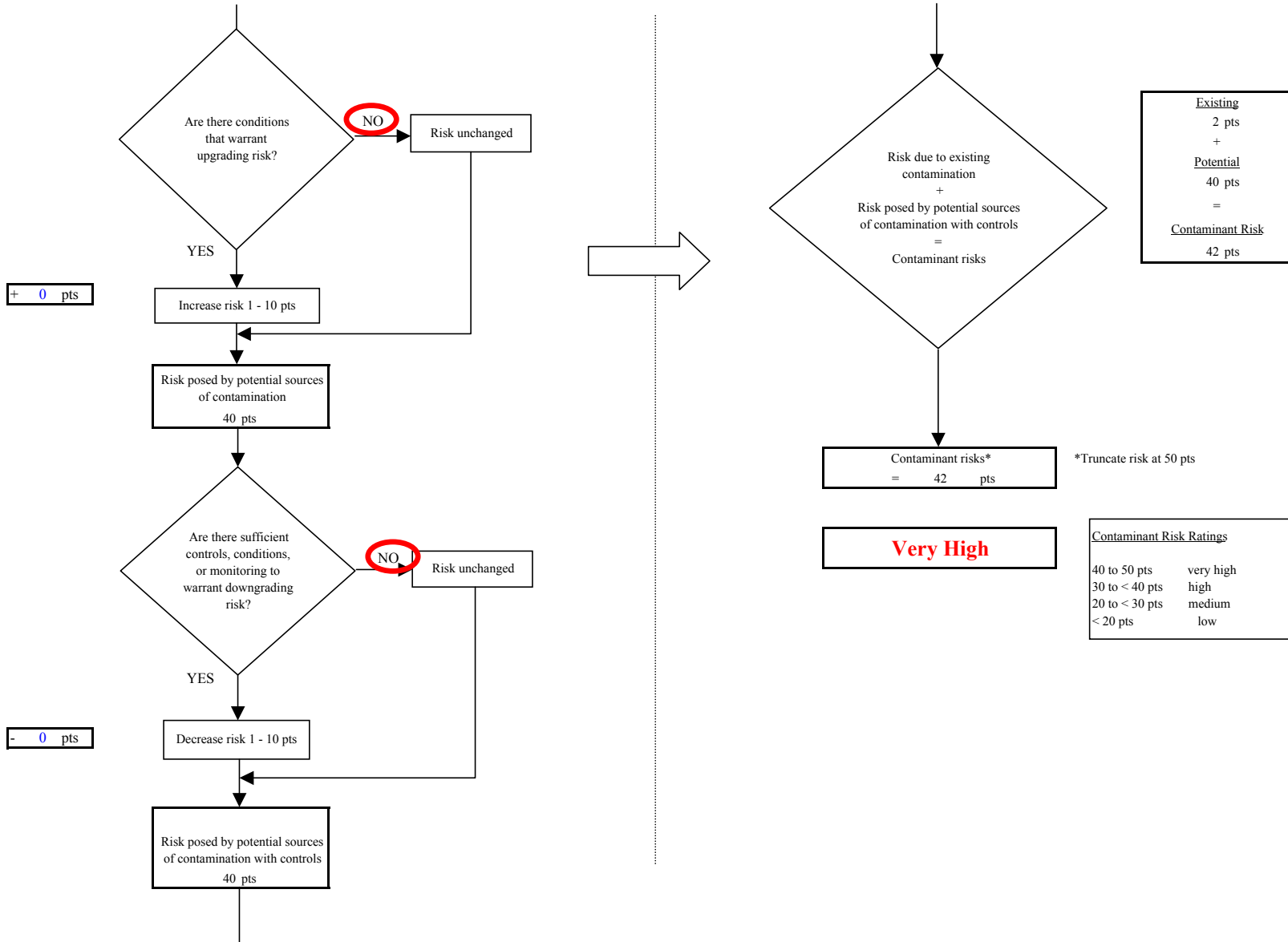




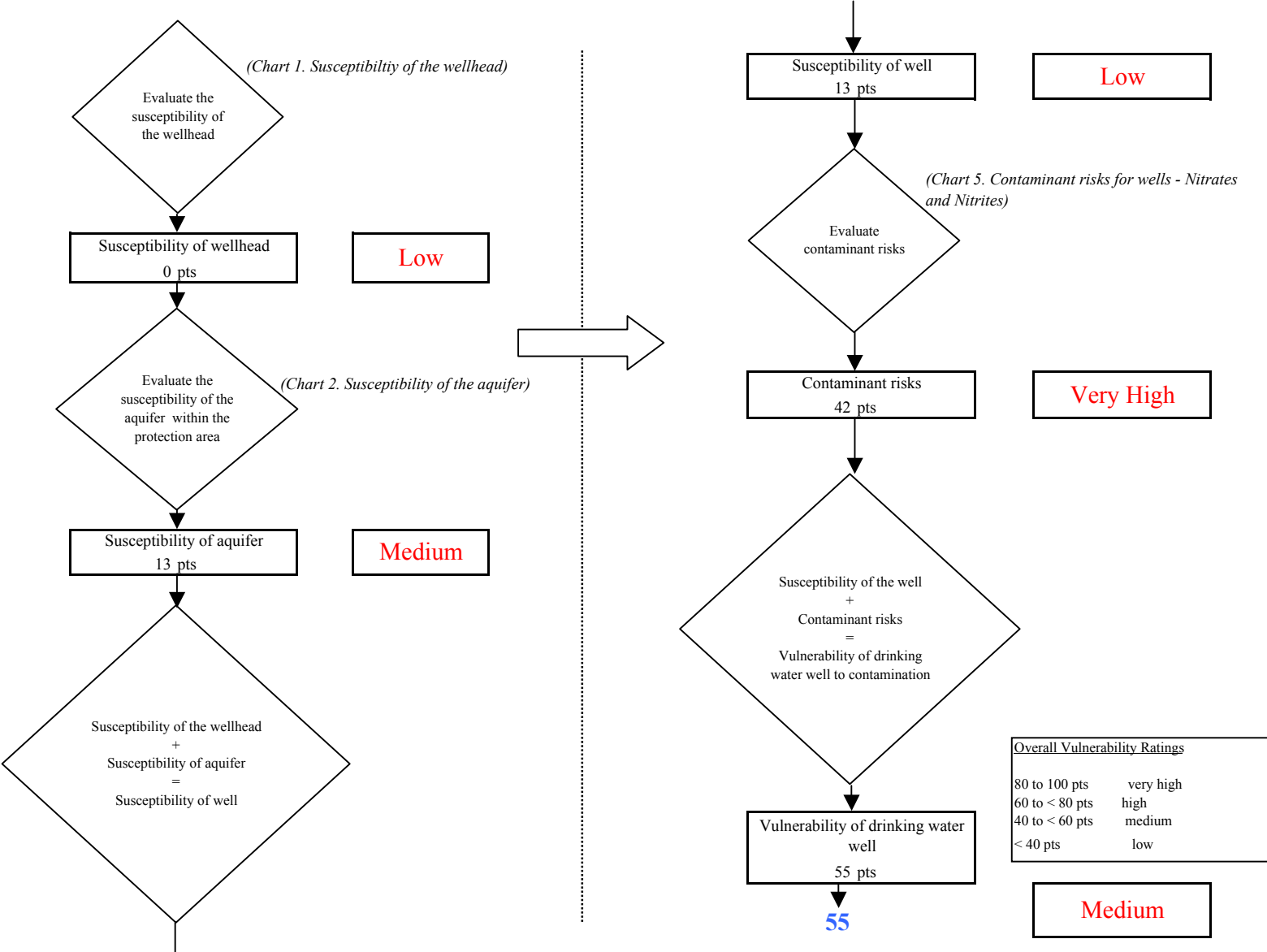
Chart 5. Contaminant risks for Kulik Lodge (PWS No. 261224.001) - Nitrates and Nitrites



**Chart 5. Contaminant risks for Kulik Lodge (PWS No. 261224.001) - Nitrates and Nitrites**



**Chart 6. Vulnerability analysis for Kulik Lodge (PWS No. 261224.001) - Nitrates and Nitrites**



**Chart 7. Contaminant risks for Kulik Lodge (PWS No. 261224.001) - Volatile Organic Chemicals**

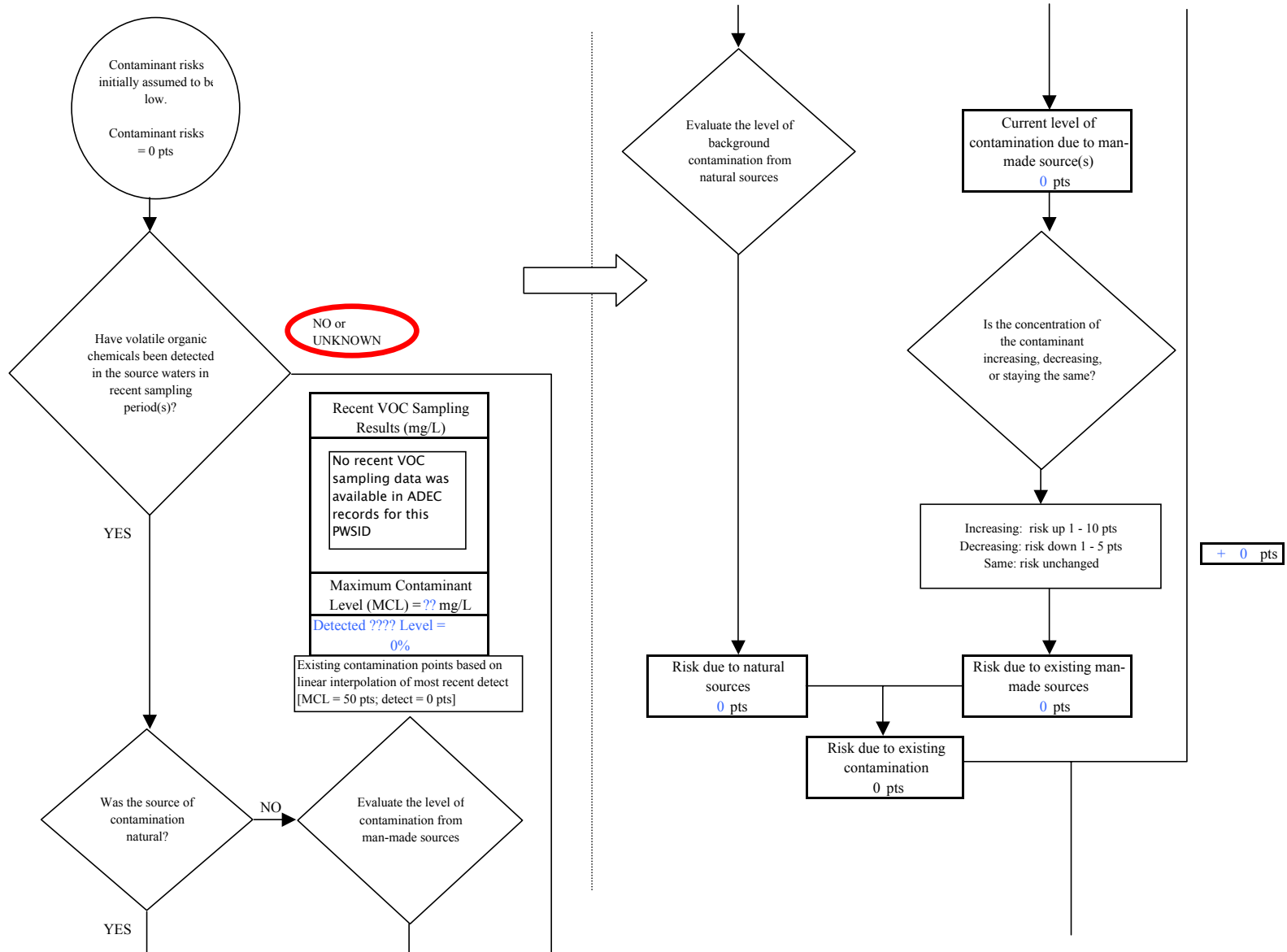
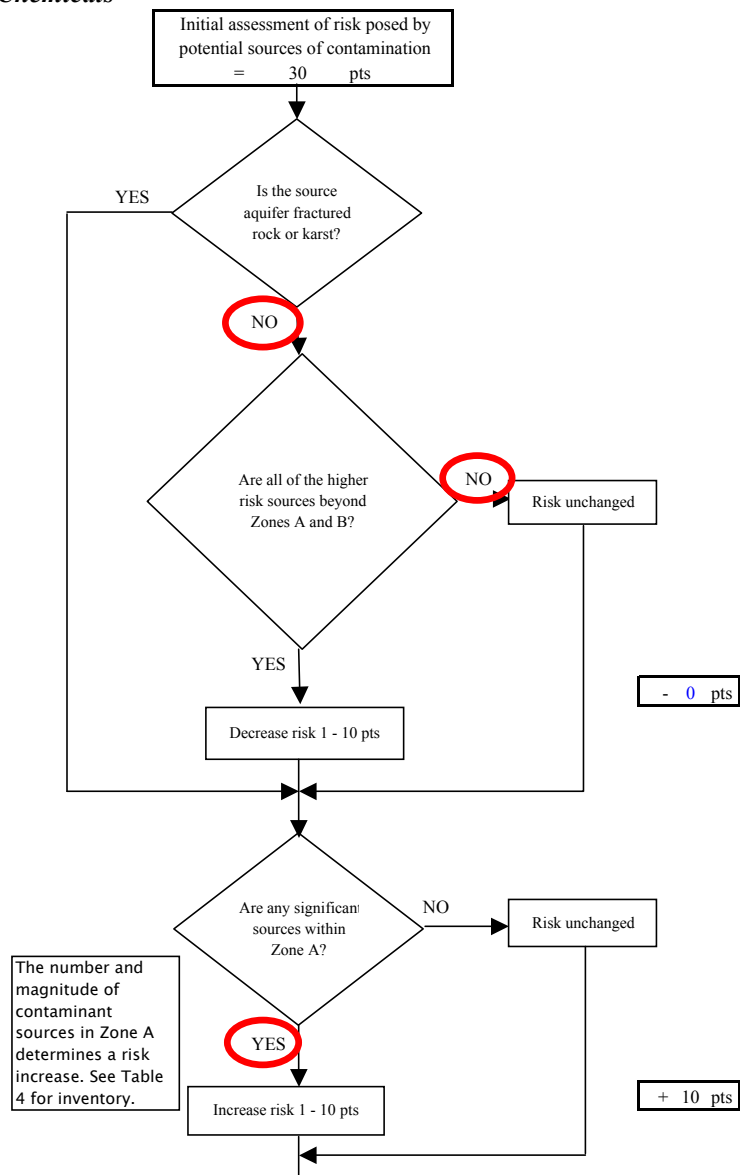
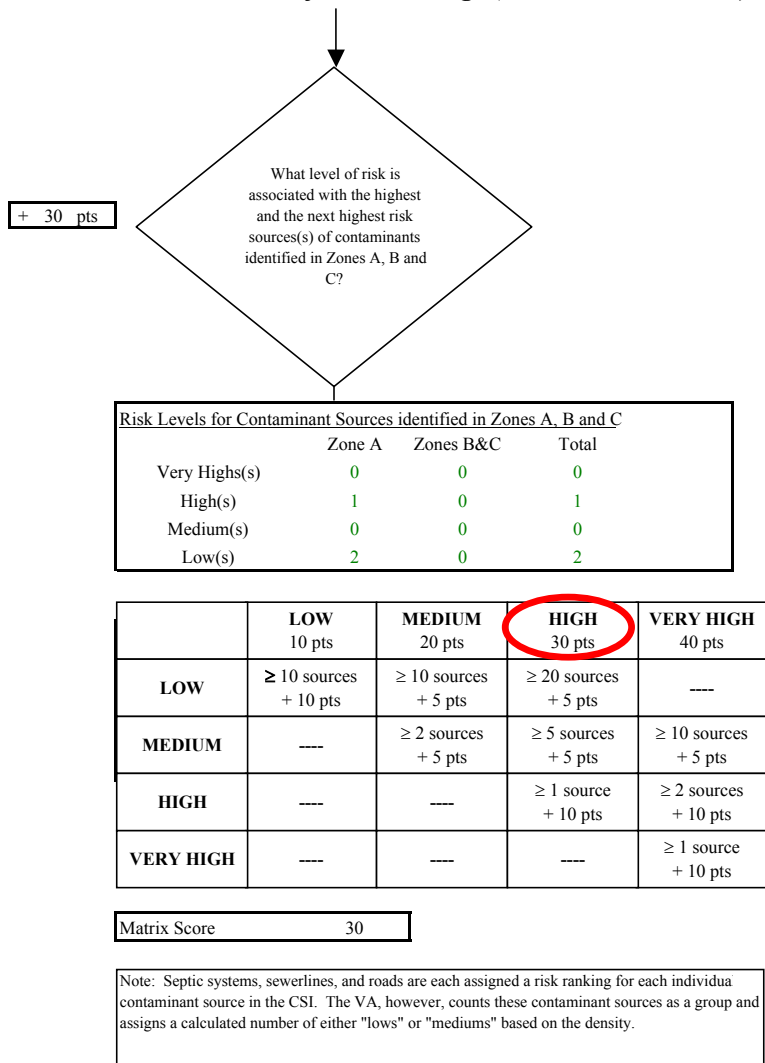
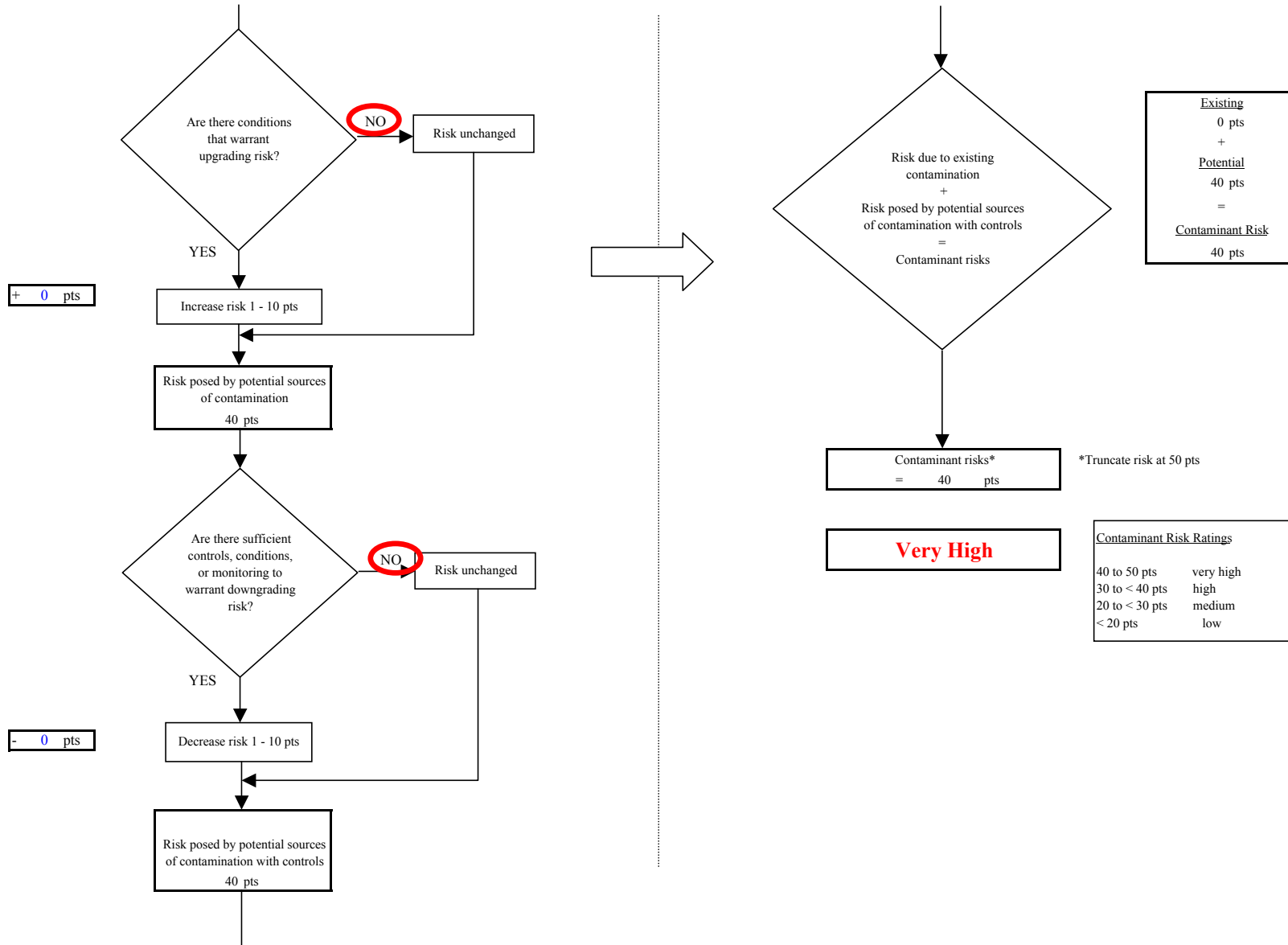


Chart 7. Contaminant risks for Kulik Lodge (PWS No. 261224.001) - Volatile Organic Chemicals



**Chart 7. Contaminant risks for Kulik Lodge (PWS No. 261224.001) - Volatile Organic Chemicals**



**Chart 8. Vulnerability analysis for Kulik Lodge (PWS No. 261224.001) - Volatile Organic Chemicals**

